



Creating Construction Details in Autodesk® Revit Architecture®

Matt Dillon

Vice President, Technical Services - Enceptia

Class summary

As important as a good model is in a Building Information Modeling (BIM) workflow, equally important is generating a good set of construction documents, complete with detail drawings. This class will teach you how to stop getting lost in superfluous minutiae by taking full advantage of the best parts of your model and adding 2D detail components and line work combined with display modification techniques, to create your construction details.

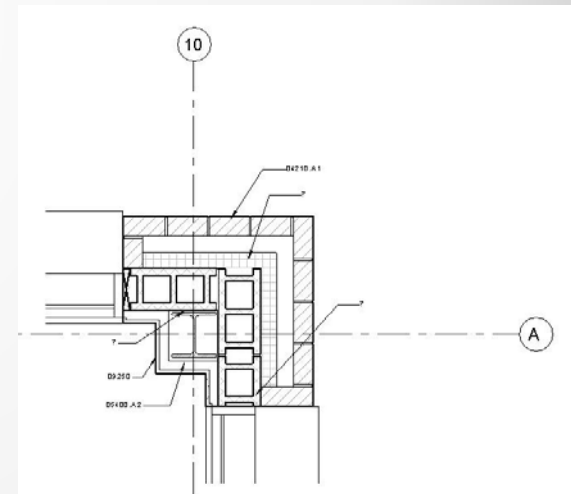
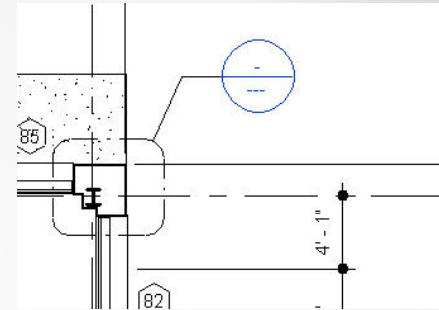
Key learning objectives

At the end of this class, you will be able to:

- Explain how to determine what to model and what not to model
- Explain what a hybrid detail is
- Modify model geometry to make it usable for construction details
- Add detail components and line work to finish out the detail

Level of Detail

- Consider the phase of design
- Consider the purpose of the view
- Don't get lost in superfluous minutia.
- “BIM” is more than “Model”



Types of Details

- Model Based (2D views of the model)
 - Small scale plans, sections and elevations
 - Little or no 2D embellishment of geometry
 - Low level of detail
- 2D Only
 - Large scale plans and sections
 - Standard details
 - Imported AutoCAD Geometry
 - Drafting View
- Hybrid 2D/Model based
 - Use and leverage the parts of the model that are correct
 - Suppress/modify the display of incorrect model geometry
 - Embellish with 2D detail components, line work, etc.

A Word About Importing DWG Data...

- Why Import?
 - Reference Geometry
 - Coordinate with Consultants not using Revit
 - AutoCAD Details

DWG BAD! DO BAD THINGS!!!

Hybrid Details

✓ 1. Turn off / suppress *correct* model geometry that is not desired in the current view

✓ 2. Modify / suppress the display of incorrect model geometry

- View-specific – you are not editing the model
- Use view properties, cut profile, linework override and mask regions

✓ 3. Embellish model geometry

- 2D detail components
- Filled regions
- 2D linework

✓ 4. Annotate and Dimension

Review Key Points

- Level of Detail
 - Avoid getting “lost in the details”
- Hybrid vs. 2D Details
 - Leverage the model where appropriate
- The Hybrid Detail Process
 - Turn off/suppress superfluous graphics
 - Modify/suppress incorrect model geometry
 - Add 2D detail components, linework, etc.
 - Annotation and Dimensions

Questions?

mattdillon@enceptia.com

Thank you! Remember
to complete your
surveys!

