

Link Details to Multiple Projects in Autodesk® Revit®

Brian Mackey
BD Mackey Consulting



Key learning objectives

At the end of this class, you will be able to:

- Create a separate detail file that can be linked into multiple files
- Use strategies for linking details for separate CD
- Use strategies for linking building for a single set of CD
- Explain the pros and cons of each strategy

Class Summary

- Discuss strategies for detail in a campus project
- Review a detail project file
- Link detail file into multiple building files
- Create views for detail in building files
- Create referenced views to the details
- Update the details
- Questions

Copied Details

- Create details in a building file
- Copy / Paste details into each building file
- Update details
- Either Copy / Paste again or edit detail in each building file

Pros

- Easy for users
- Sheet numbers & Detail numbers may vary from building to building

Cons

- Inaccuracy in details
- Sheet numbers & Detail numbers may vary from building to building
- Remembering to paste updates

Buildings Linked to Site File

- Link all buildings into site file
- Details and sheets done from site file

Pros

- Everything in one location
- Sheet numbers & Detail numbers same for each building
- Easy to update details
- Works great for one CD set

Cons

- Large file size
- Lost links cause issues
- Orphaned tags and dimension

Dummy Sheets

- Details created in one building file
- Dummy views created in each building file
- Dummy sheets created in each building and views placed
- Print out of original building file

Pros

- All details match
- Sheet numbers & Detail numbers same for each building
- Easy to update details

Cons

- Details bubbles not being accurate
- Maintain dummy views / sheets
- Printing from multiple locations

Linked Detail File

- Details created in separate project file
- Views done in plans and elevations
- Detail project linked to all building files
- Reference detail view from link
- Duplicate views

Pros

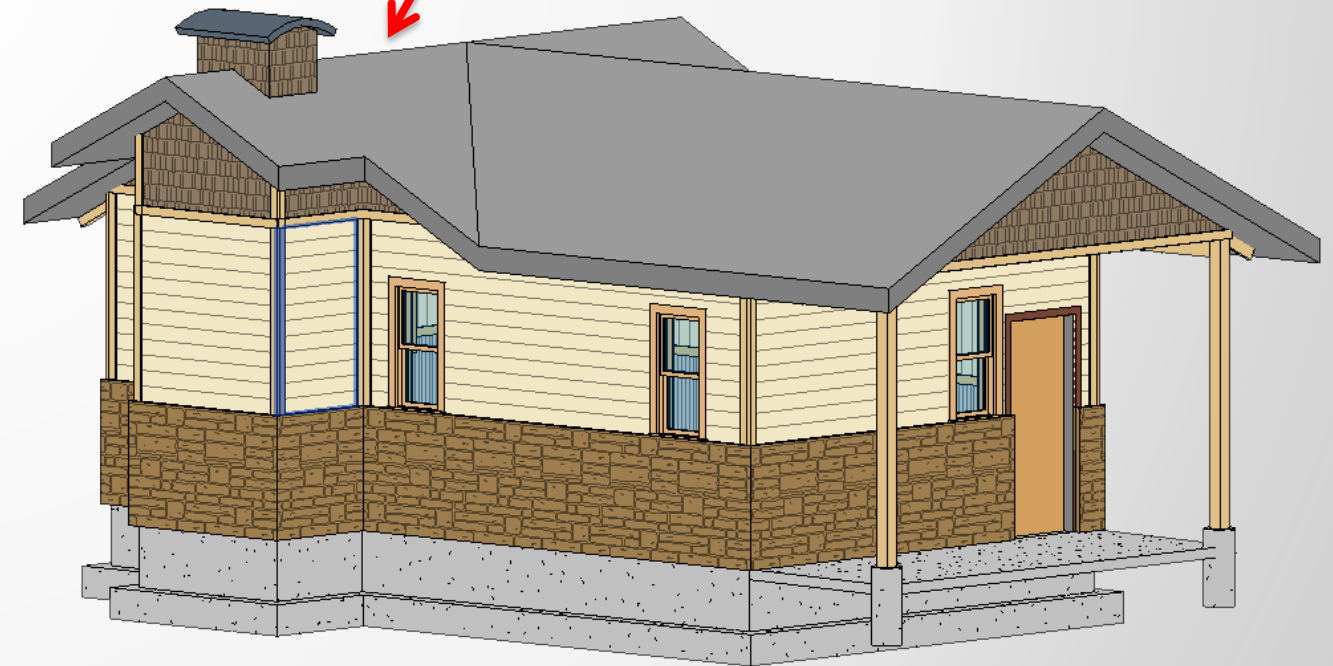
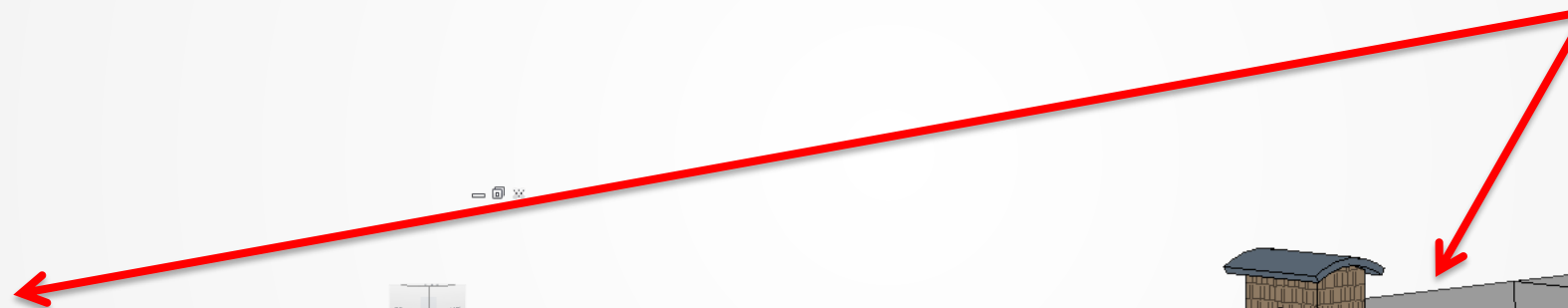
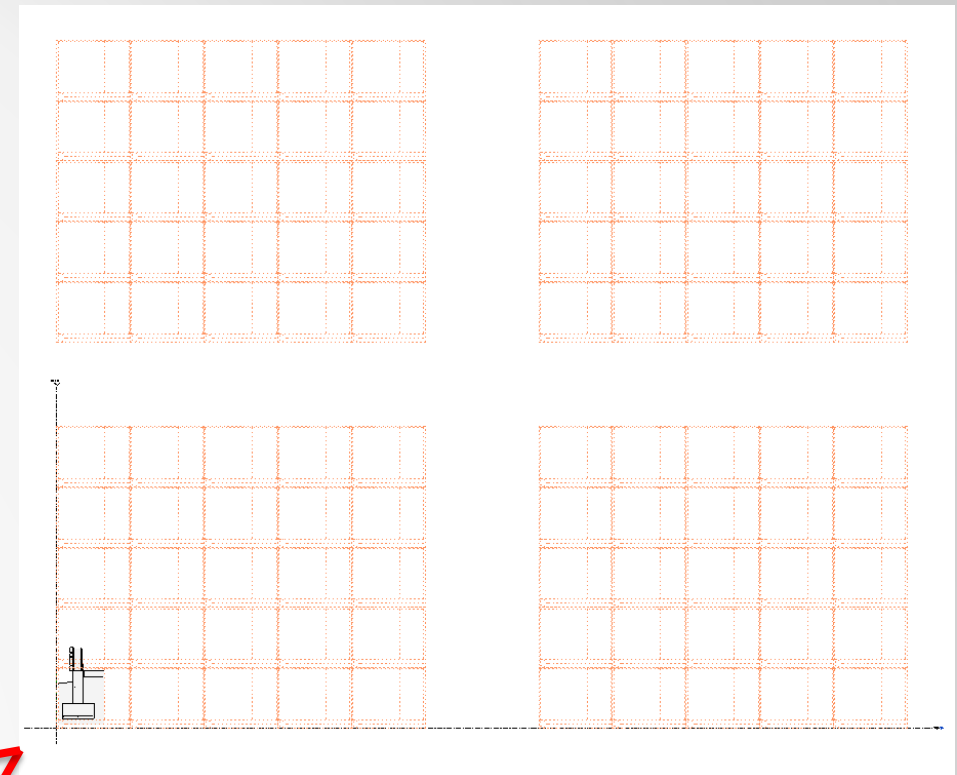
- All details match
- Sheet numbers & Detail may vary for each building
- Easy to update details
- Smaller building files

Cons

- Initial set up
- Open another instance of Revit to change details
- Multiple plan view tags
- All details done in plans / elevations

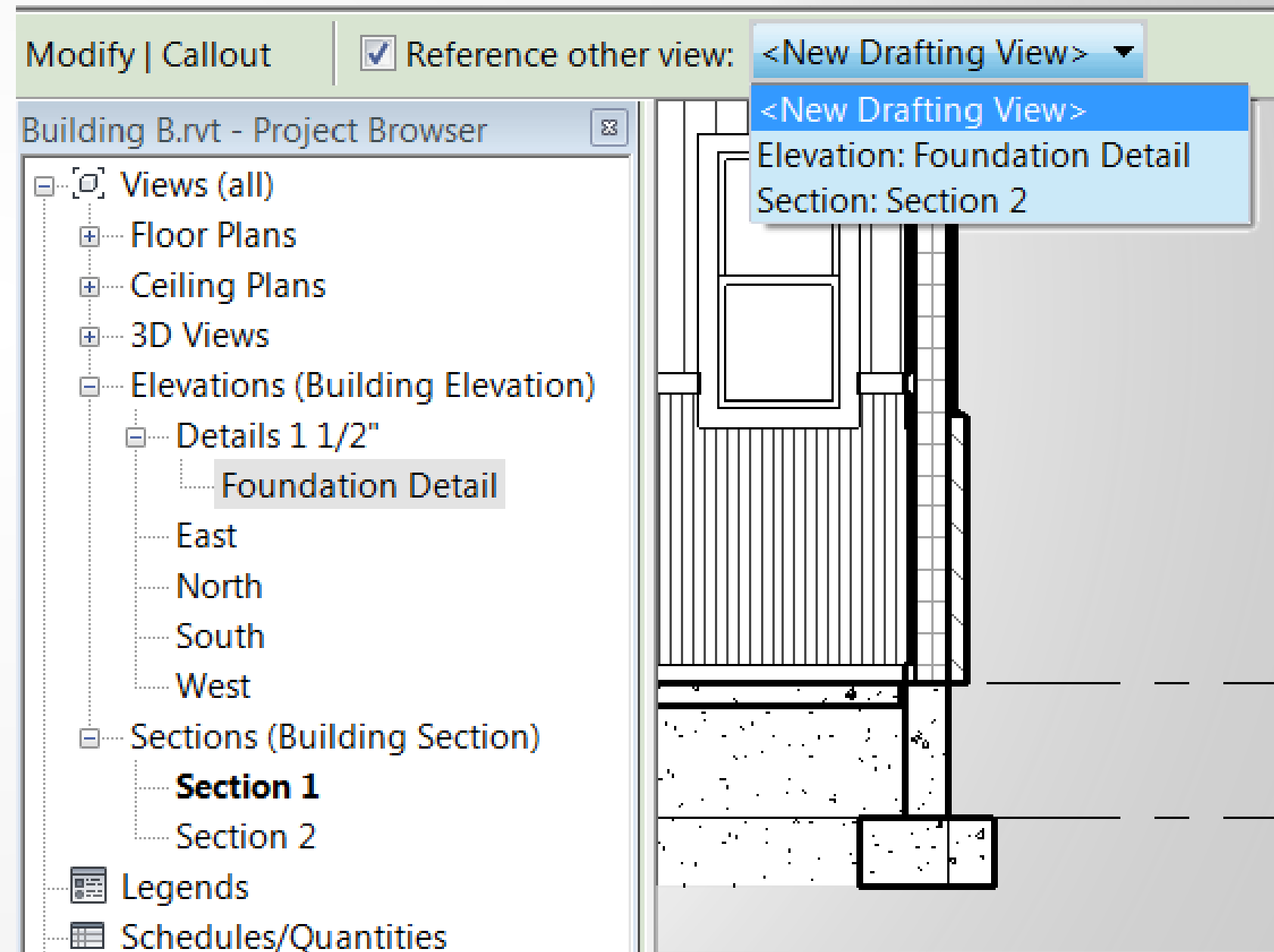
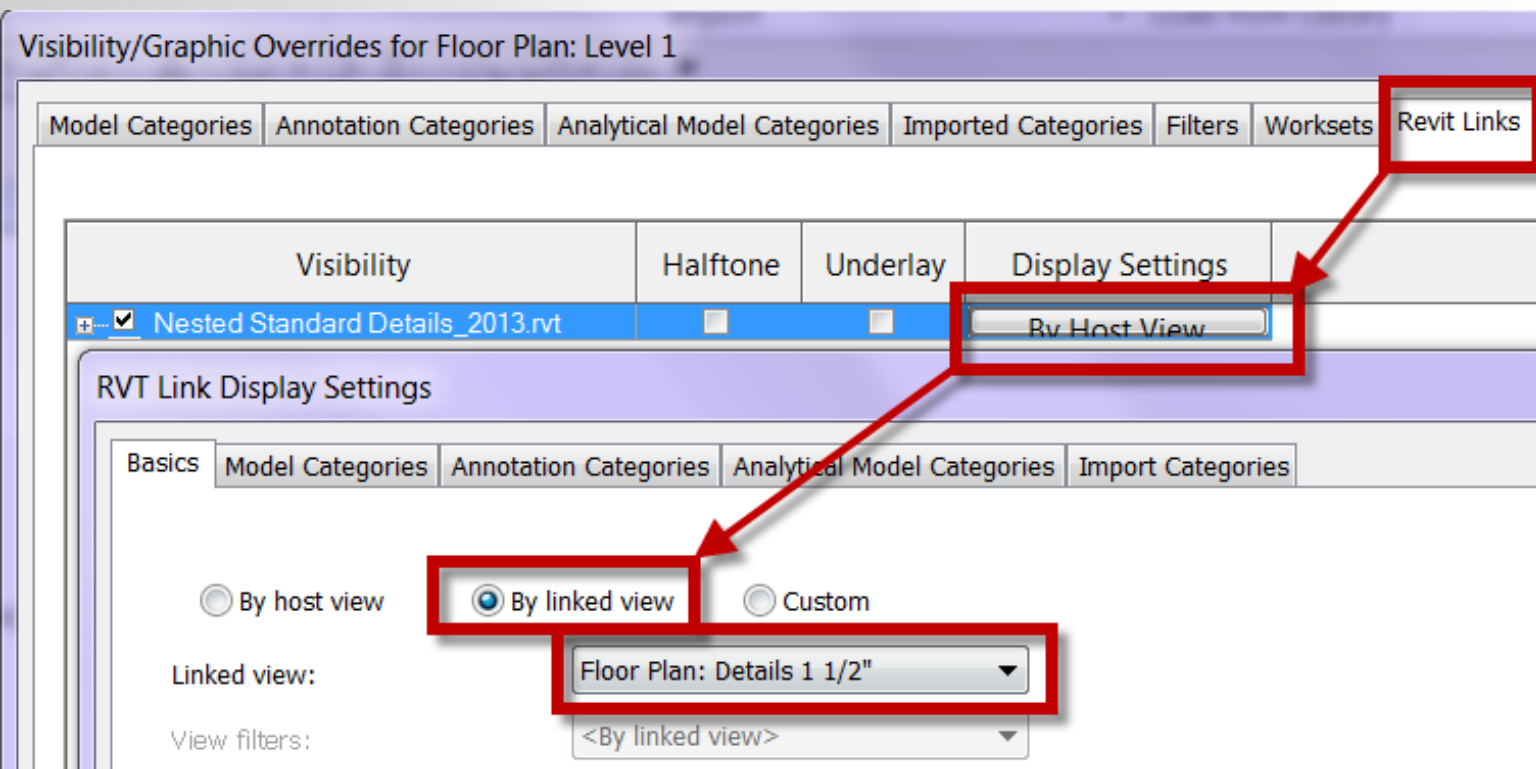
Linked Detail File

- Create a detail file
 - Plan details done in plan
 - Vertical details done in elevation
- Link the detail file into project files



Linked Detail File

- Create detail view in each building
- Show link view per link
- Duplicate dependent views for each detail
- Reference call outs to the dependent views



Questions?

- *Email* brian@BDMackeyConsulting.com
- *Twitter* @TheRevitGeek
- *Linkedin* [linkedin.com/in/mackeybrian](https://www.linkedin.com/in/mackeybrian)
- *Blog* bdmackeyconsulting.com/blog

Revit Radio www.revitradio.co



