



No More Photo-CAD: Using an AutoCAD® Architecture Template with Autodesk® Impression for Presentations

Dustin Fike, AIA

Senior Associate Architect, Morris Architects, Orlando, FL

Class Summary

Put an end to the laborious, repetitive coloring of plans using image editing software and create presentation drawings with DWG™ files that continue to be useful in design documentation. Autodesk Impression software enables you to create beautiful presentation drawings that can emulate pencil, pen, watercolor, or many other types of media. This class will provide step-by-step instructions to create an AutoCAD® Architecture template that makes use of AEC objects and layers (though many of the concepts will apply to AutoCAD as well); create an Impression style template that automates the application of styles; and finally, apply the process to quickly incorporate design changes and update the presentation drawing. This workflow will enable you to quickly creating presentation drawings that look consistently beautiful and that rapidly adapt to change.

Learning Objectives

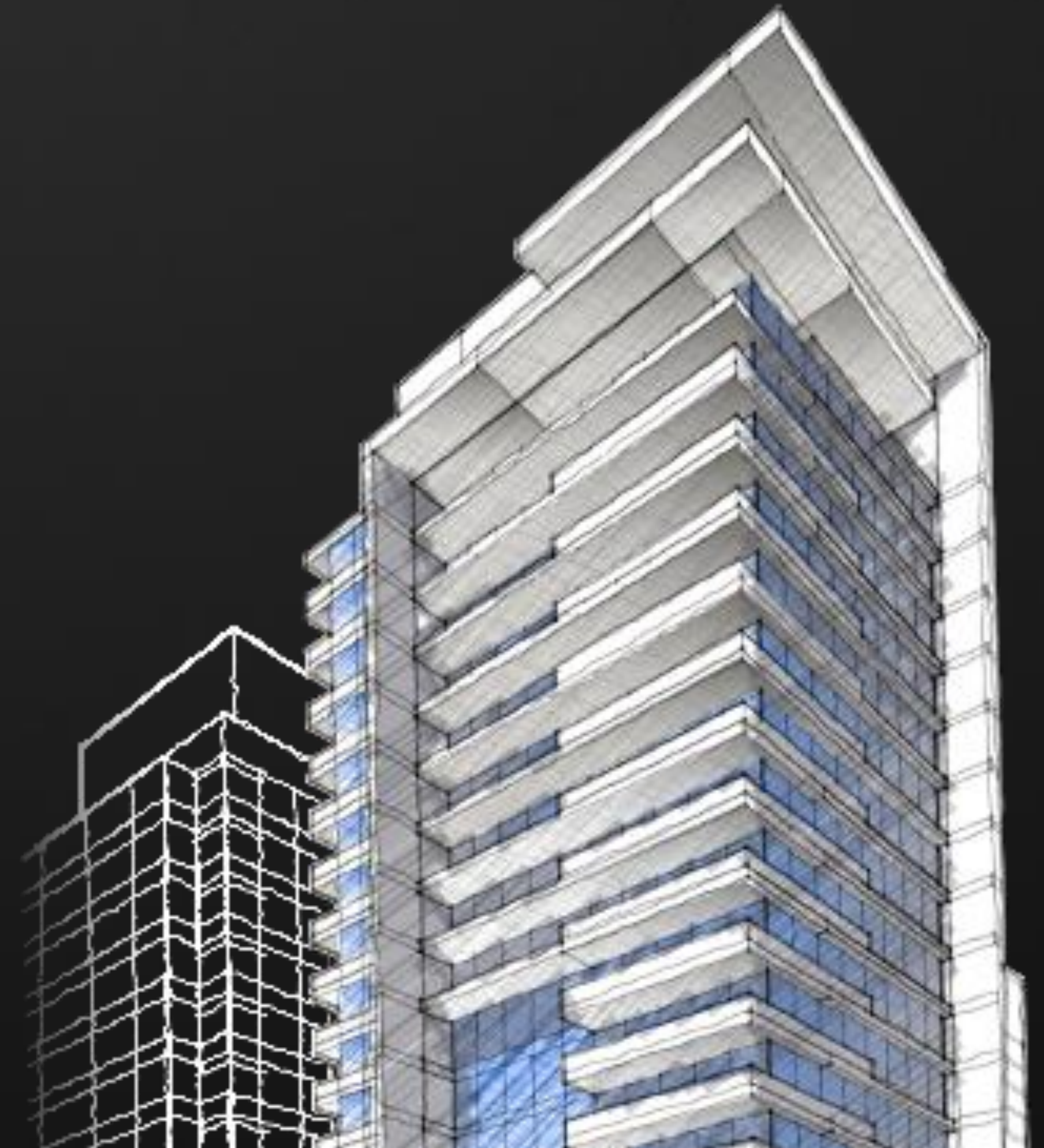
At the end of this class, you will be able to:

- Create an AutoCAD® Architecture template prepped for Autodesk® Impression
- Create basic visual styles in Impression
- Apply styles while importing a DWG file into Impression
- Update an Impression file with changes to the imported DWG file

Introduction

Autodesk® Impression

- Free to subscription members
- Creates traditional hand rendered style presentation drawings
- Works with DWG™ and DWF™ files
- Stays linked to CAD file for updates
- Think of Impression as an extension of paperspace



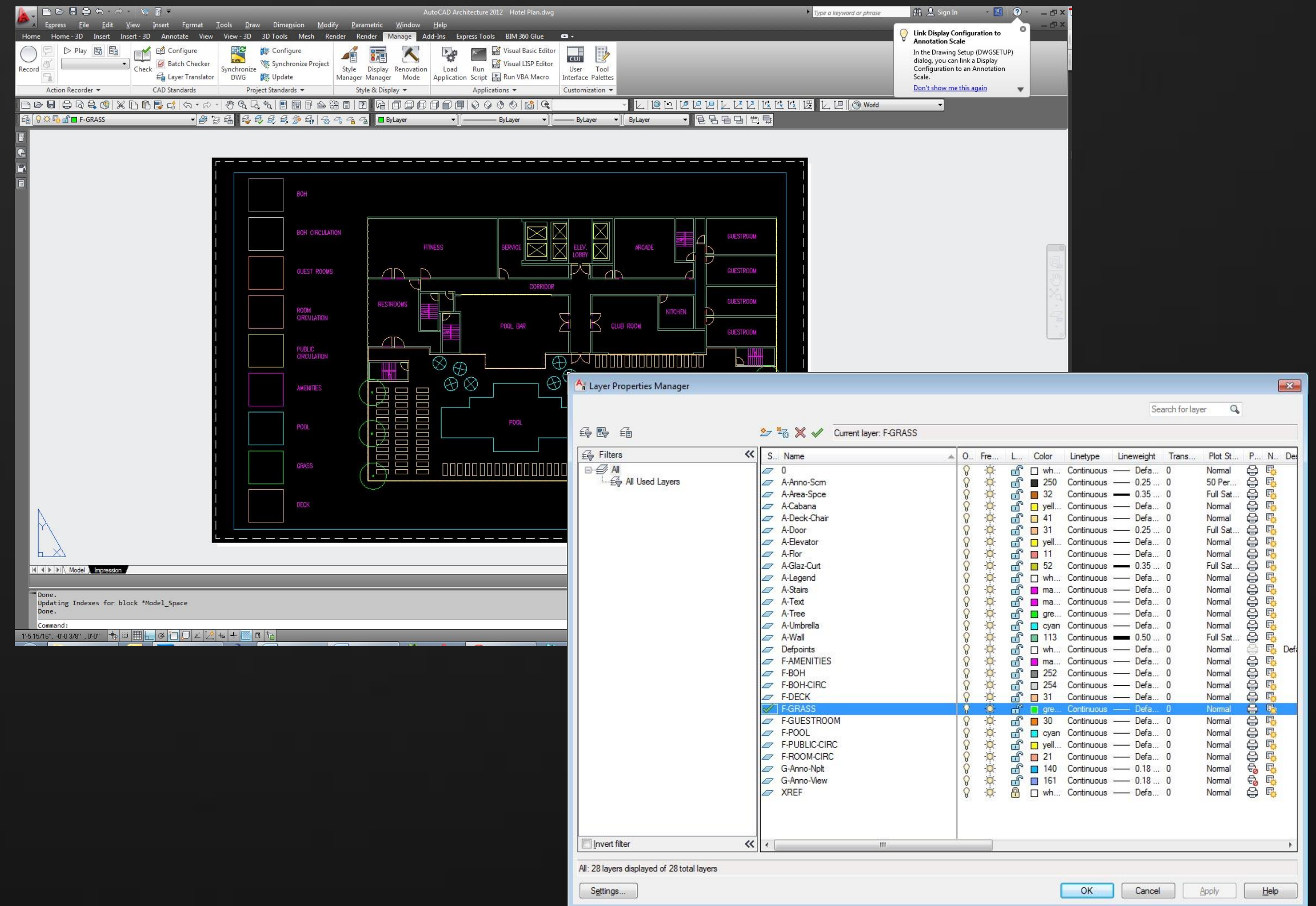
Creating an AutoCAD® Architecture Template

Pre-Planning Your Template Contents

- Determine types of projects
- Decide if you want separate templates
- List possible items to include
 - Space Types
 - Equipment Types
 - Standard Blocks
- Determine what is important to differentiate

Laying Out a Sample Drawing

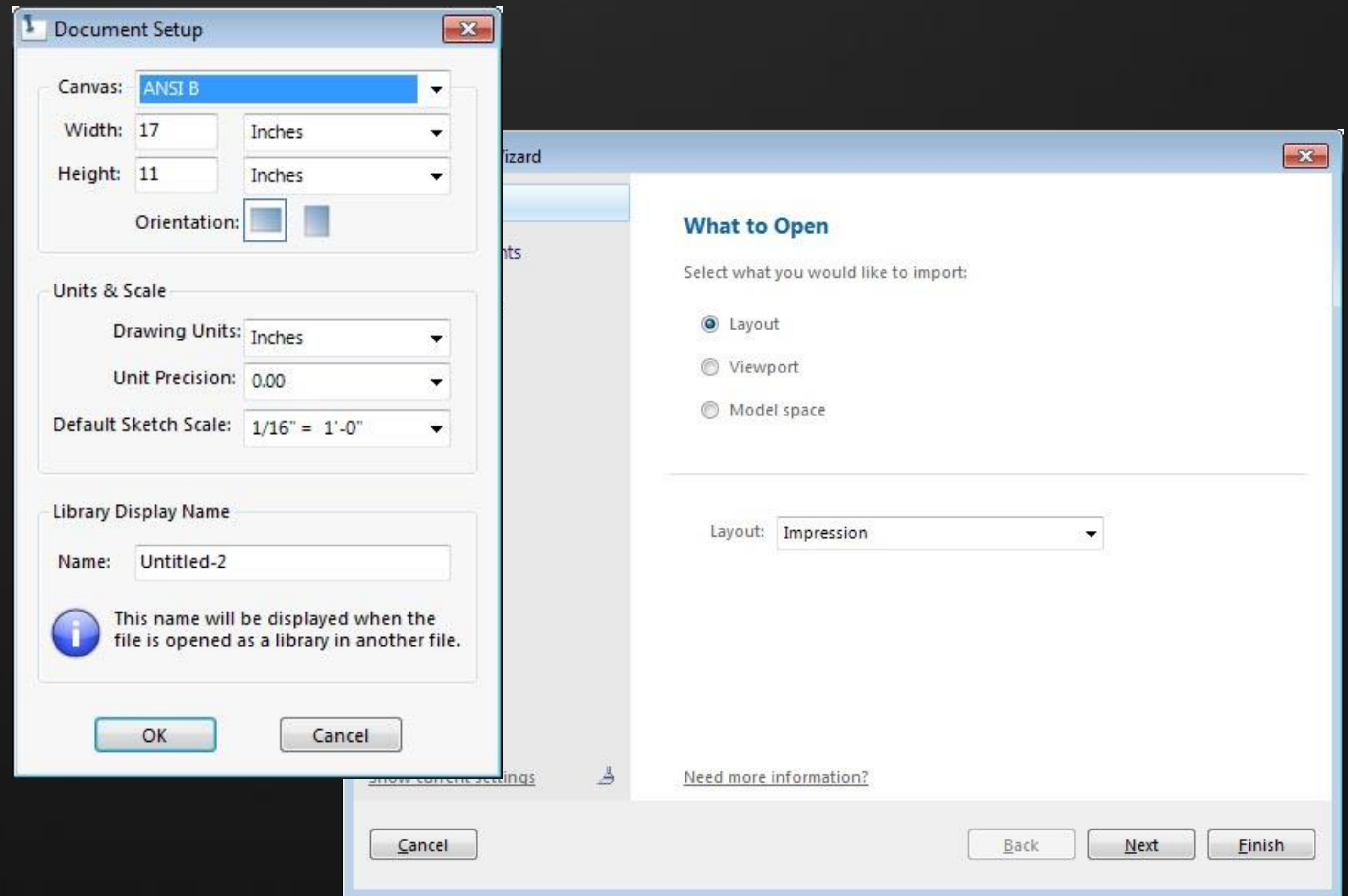
- Create layers for differentiation
- Draw a simple plan using walls, doors, windows, etc...
- Use spaces or polylines for fills
- Set up a display representation
- Create a Layout



Getting Started with Autodesk® Impression

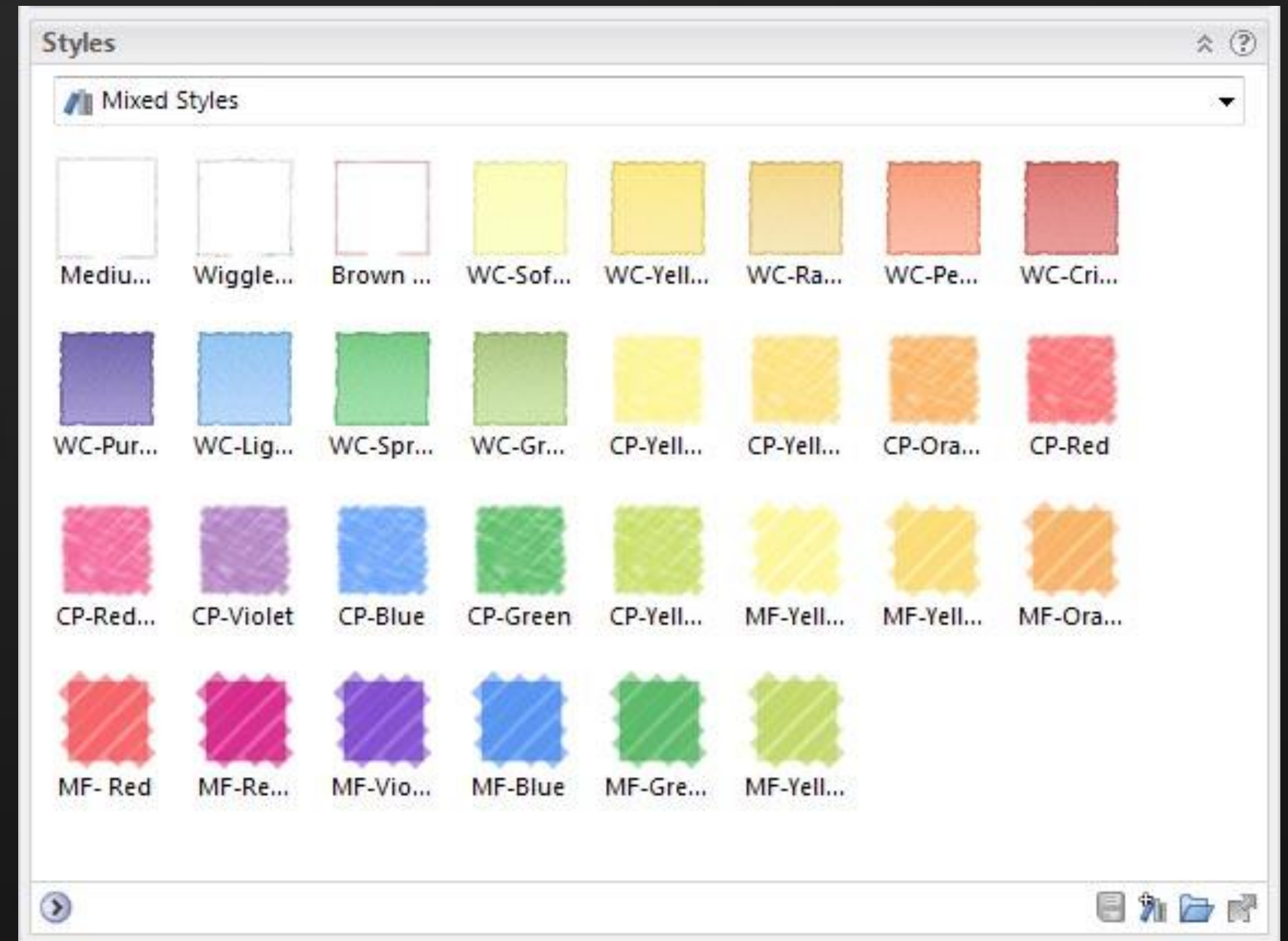
Importing the AutoCAD® Drawing

- Setup Impression page to match AutoCAD layout
- Use default options for first import
- Check options on “File Clean-up” tab
- Pack Layers for performance
- Check that everything imported properly



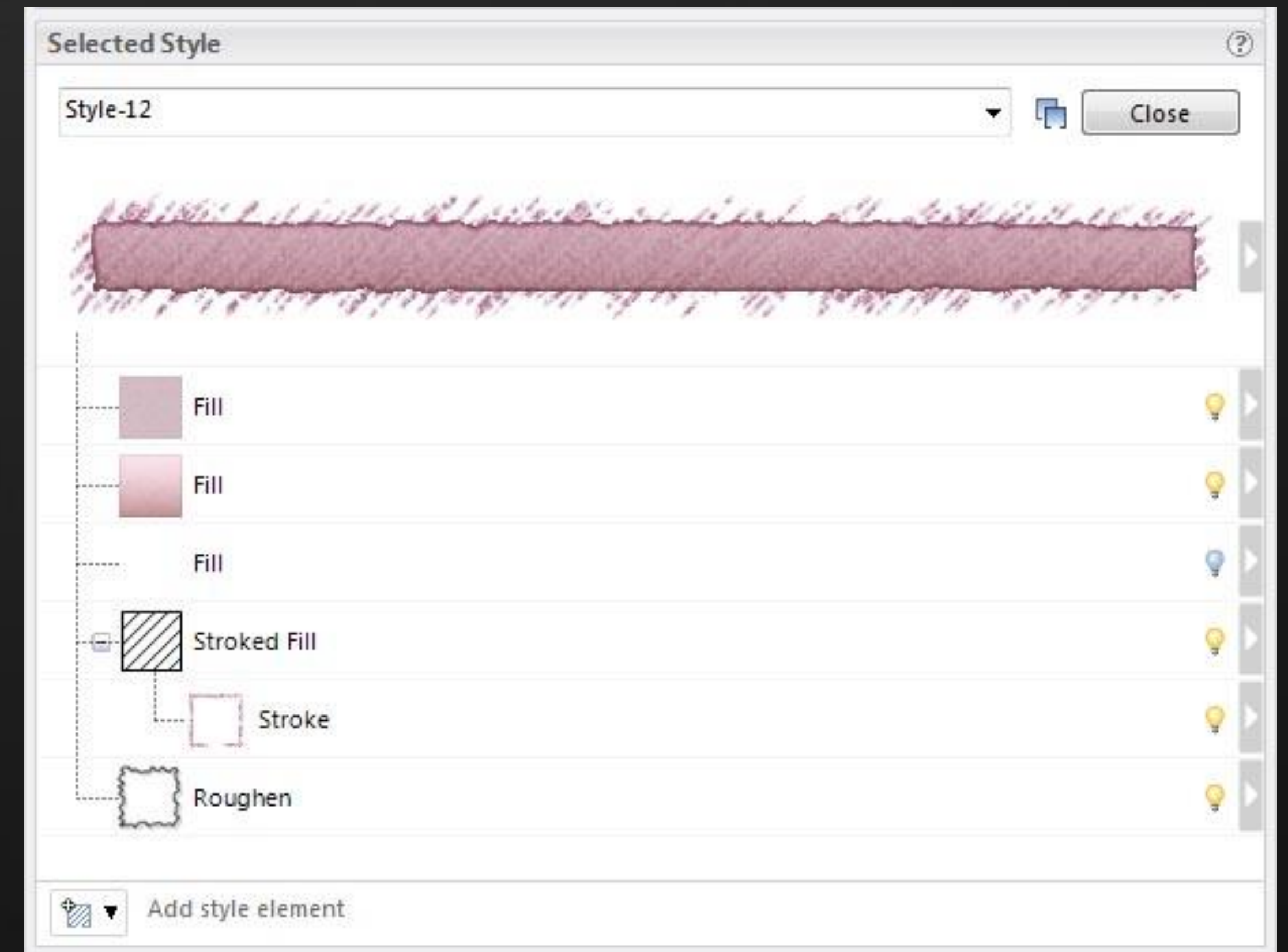
Customizing the First Autodesk® Impression Styles

- Customize the default stroke style
- Create additional stroke styles
- Select a fill style from the library
- Apply the style to a layer and rename
- Customize as desired
- Use Style Library Wizard to create multiple versions of style



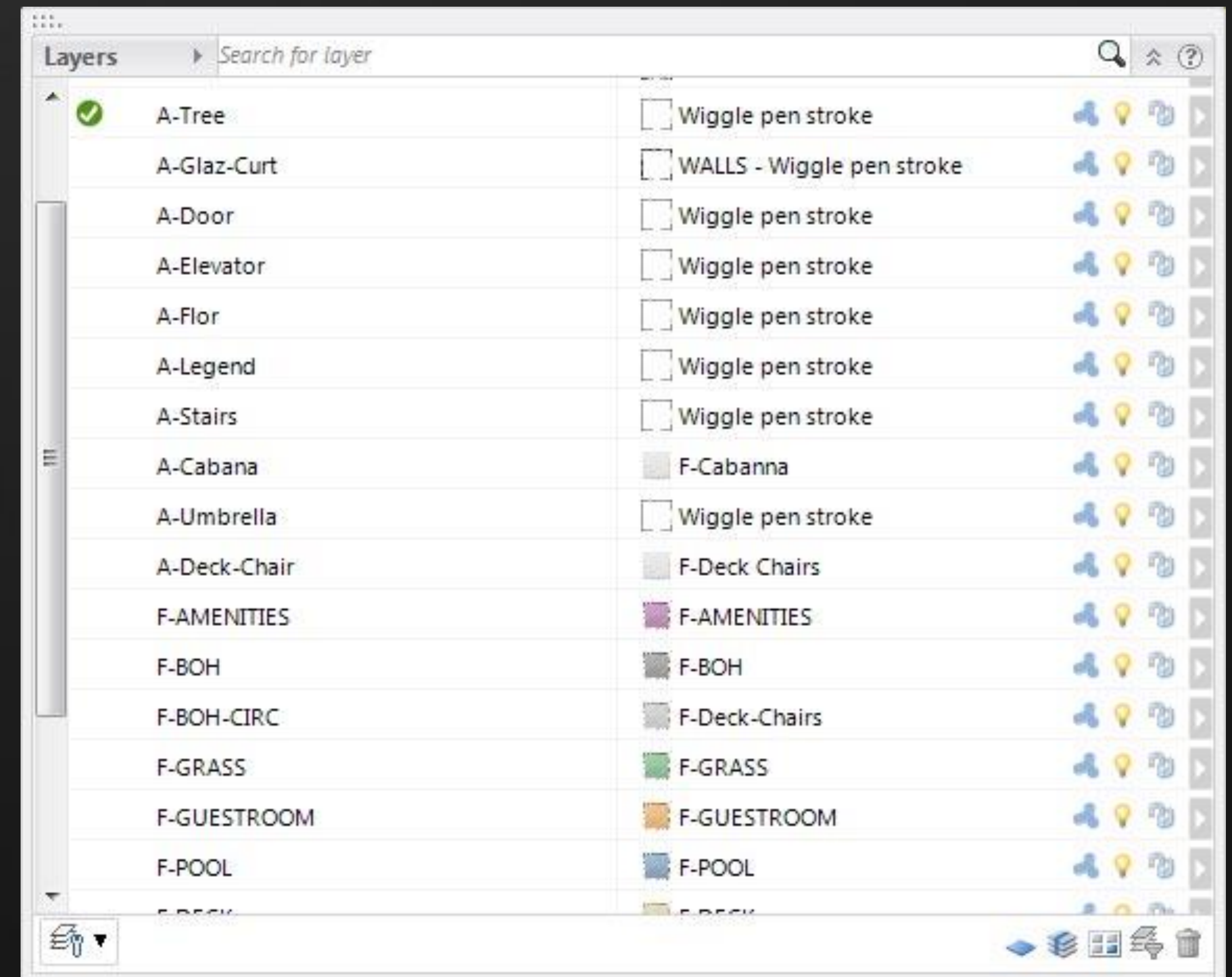
Parts of an Autodesk® Impression Style

- Stroke
 - Standard, Marker, or Pencil
- Fill
 - Uniform, Gradient, or Texture
- Stroked Fill
- Hatched Fill
- Outline Stroke
 - Stroke & Fill, Stroke only, or Fill only
- Effect
 - Roughen or Drop Shadow



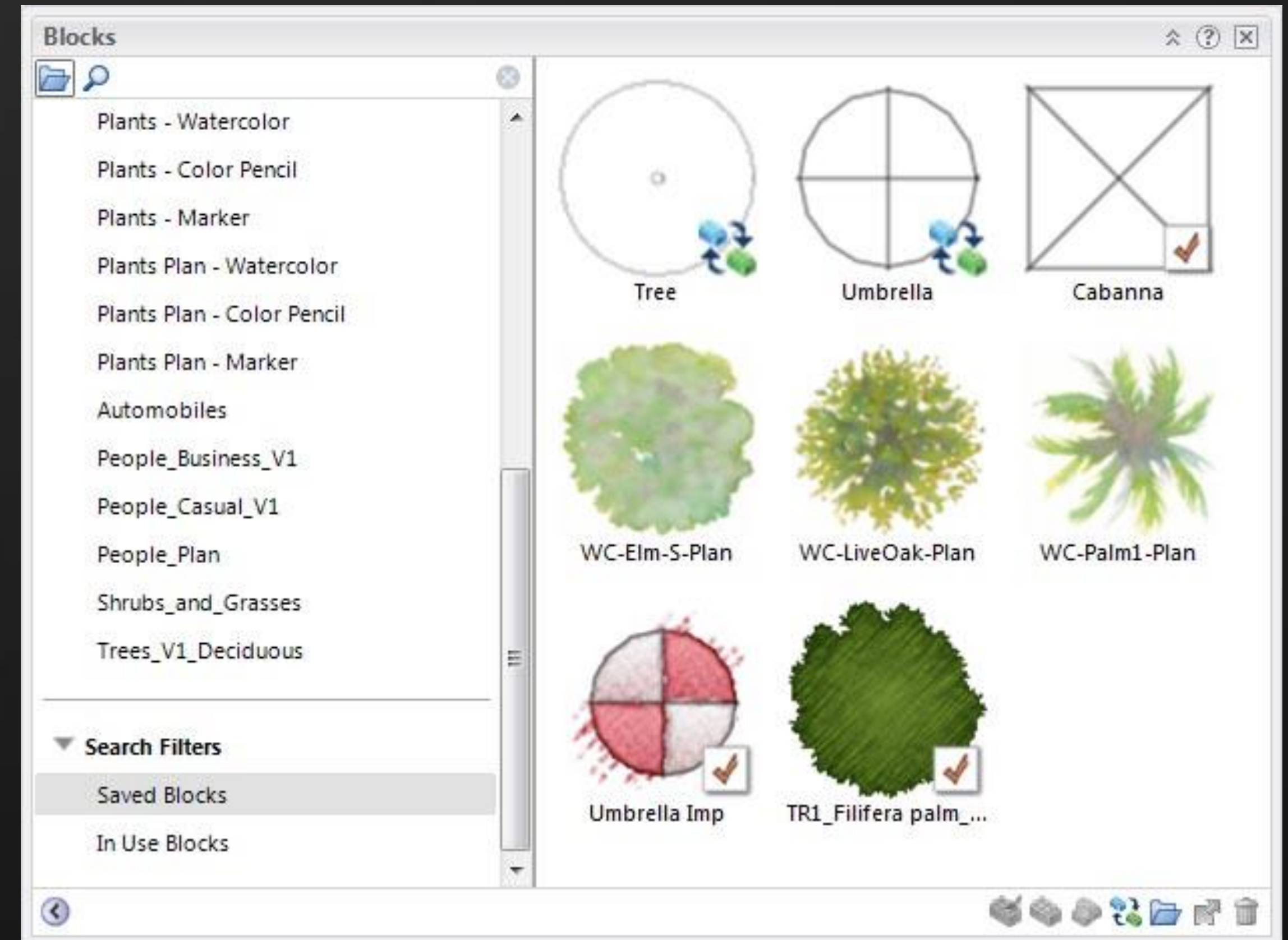
Adding Styles to the Autodesk® Impression Template

- Add styles from Style Wizard to Saved Styles
- Rename and assign styles to layers
- Further customize as needed
- Rearrange layer order



Autodesk® Impression Block Substitution

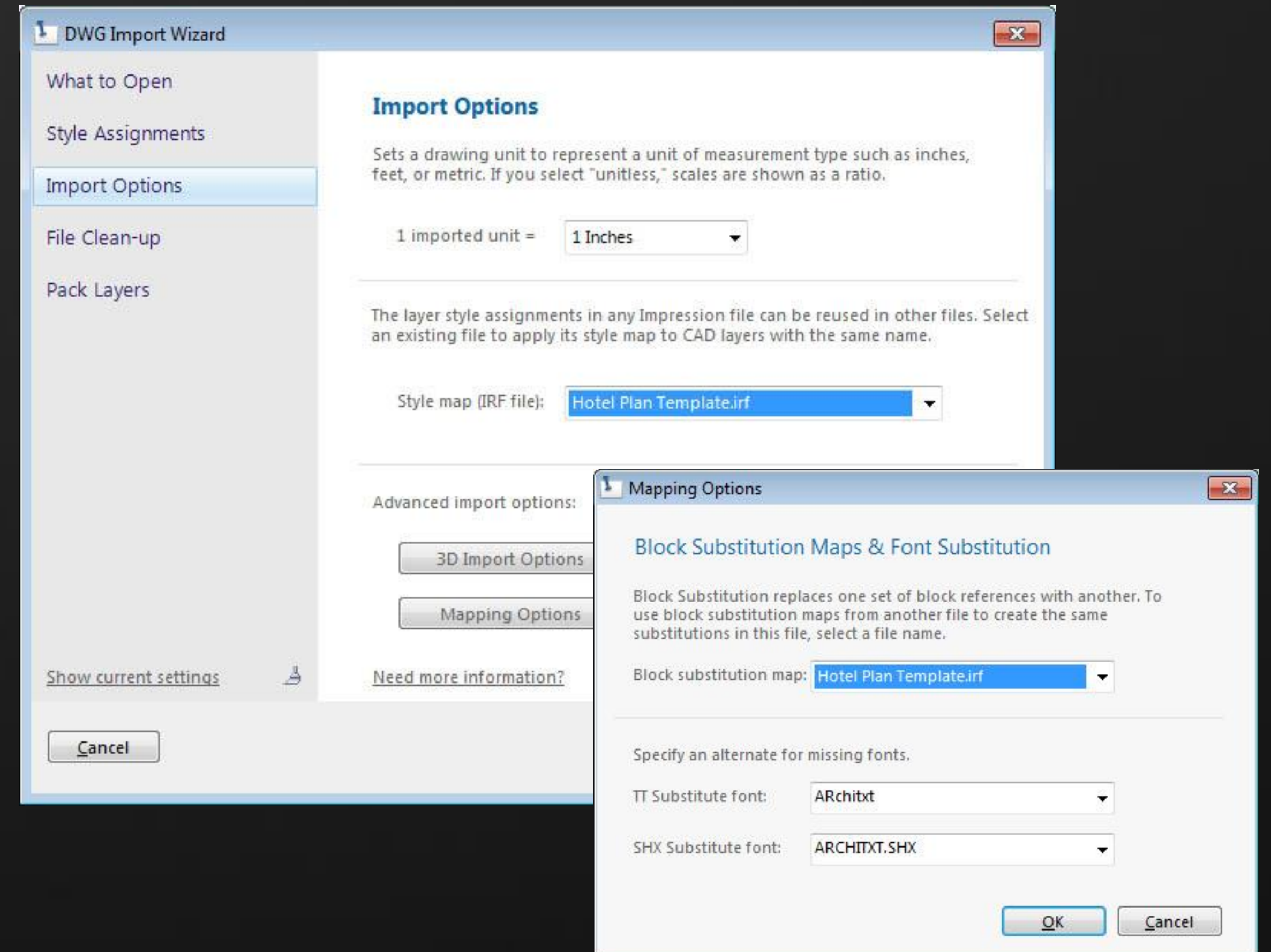
- Select blocks from library
- Create your own blocks
- Create block substitutions
- Vary scale and rotation



Using a Style Map During DWG™ Import

Importing Your Template with a Style Map

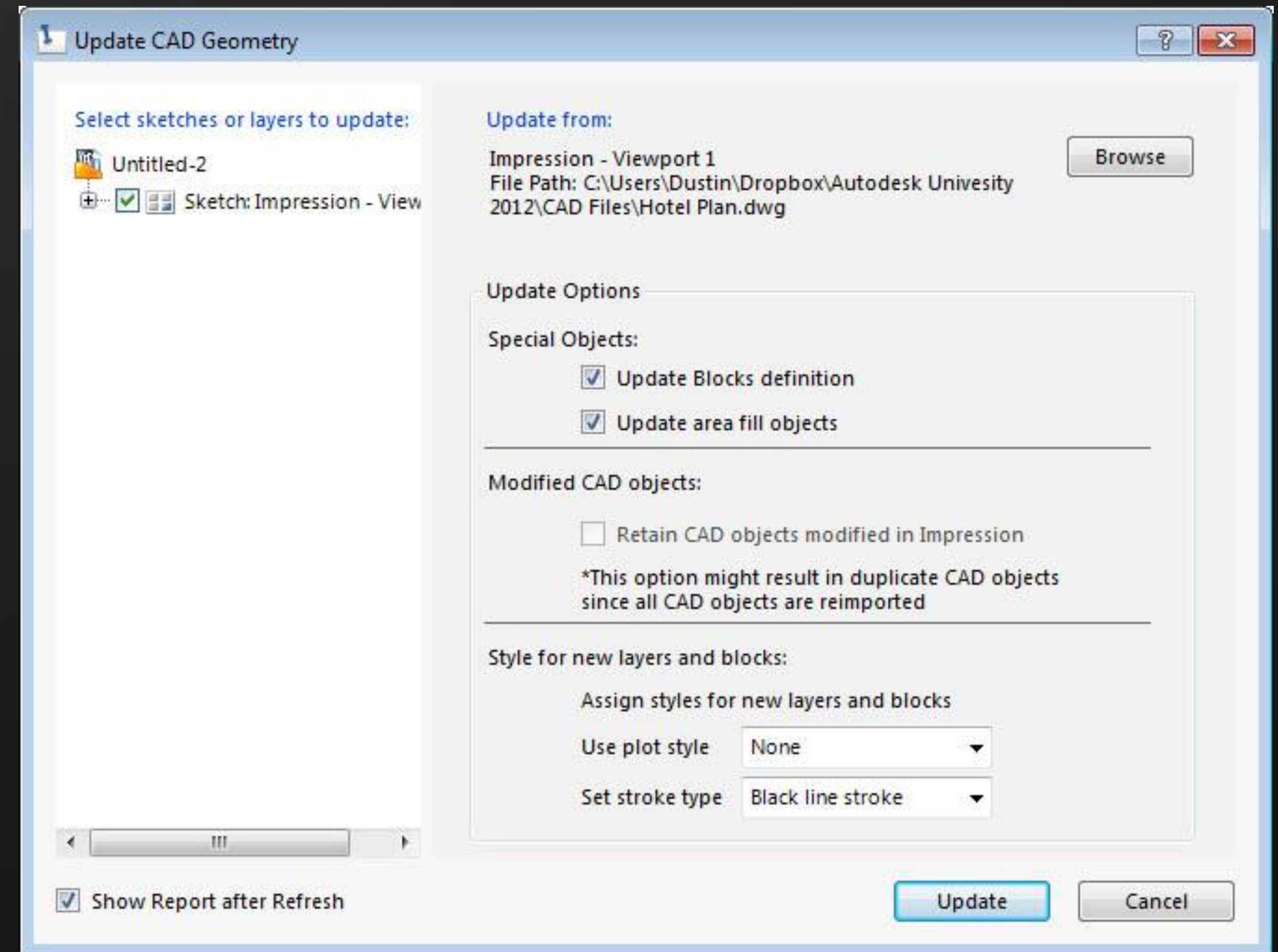
- Select your Autodesk® Impression template file on the “Import Options” tab
- Select your template file again in “Mapping Options” for block substitution
- Check that everything imported properly



Updating Changes to a CAD File

Updating CAD Geometry

- CAD file changes as the design evolves
- Update CAD Geometry in Autodesk® Impression
- Verify changes were updated properly



Some Quick Autodesk® Impression Tips

Autodesk® Impression Quick Tips

- Use “Save As” PSD to preserve layers
- Use “Save As” PNG to export images with transparent background
- Use “Fast Display” for performance increase
- Partially transparent styles may need an opaque fill or holes cut in CAD
- Walls with a fill in the display representation will create a fill style in Autodesk Impression

Closing Summary

- Create an AutoCAD® template with all the layers you need
 - Create an Autodesk® Impression template with all the styles you need mapped to the correct layers
 - Start future projects with those templates for quick presentation drawings
 - Update CAD Geometry to quickly revise your presentation drawings
-
- For questions you can email me at dustin-au@dustinfike.com

