

Autodesk® 360: Overview

AU, November 2012

Shanna Tellerman

Product Line Manager, Autodesk 360

Autodesk® 360 

What is Autodesk 360?

Agenda

- What is the Cloud?
- Autodesk 360 Technology, Products & Platform
- Access to Autodesk 360
- Security
- Q&A

What is this cloud thing all about?

The Cloud: What is it?



According to Webster:

Cloud Computing – The practice of storing regularly used computer data on multiple servers that can be accessed through the Internet.

The Cloud: What is it?



According to Webster:

Cloud Computing – The practice of storing regularly used computer data on multiple servers that can be accessed through the Internet.



WIKIPEDIA
The Free Encyclopedia

According to Wikipedia:

Cloud Computing – The use of computing resources (hardware and software) that are delivered as a service over a network (typically the internet). Cloud computing entrusts remote services with a user's data, software and computation.

The Mainframe: 60s & 70s - Expensive & Inaccessible



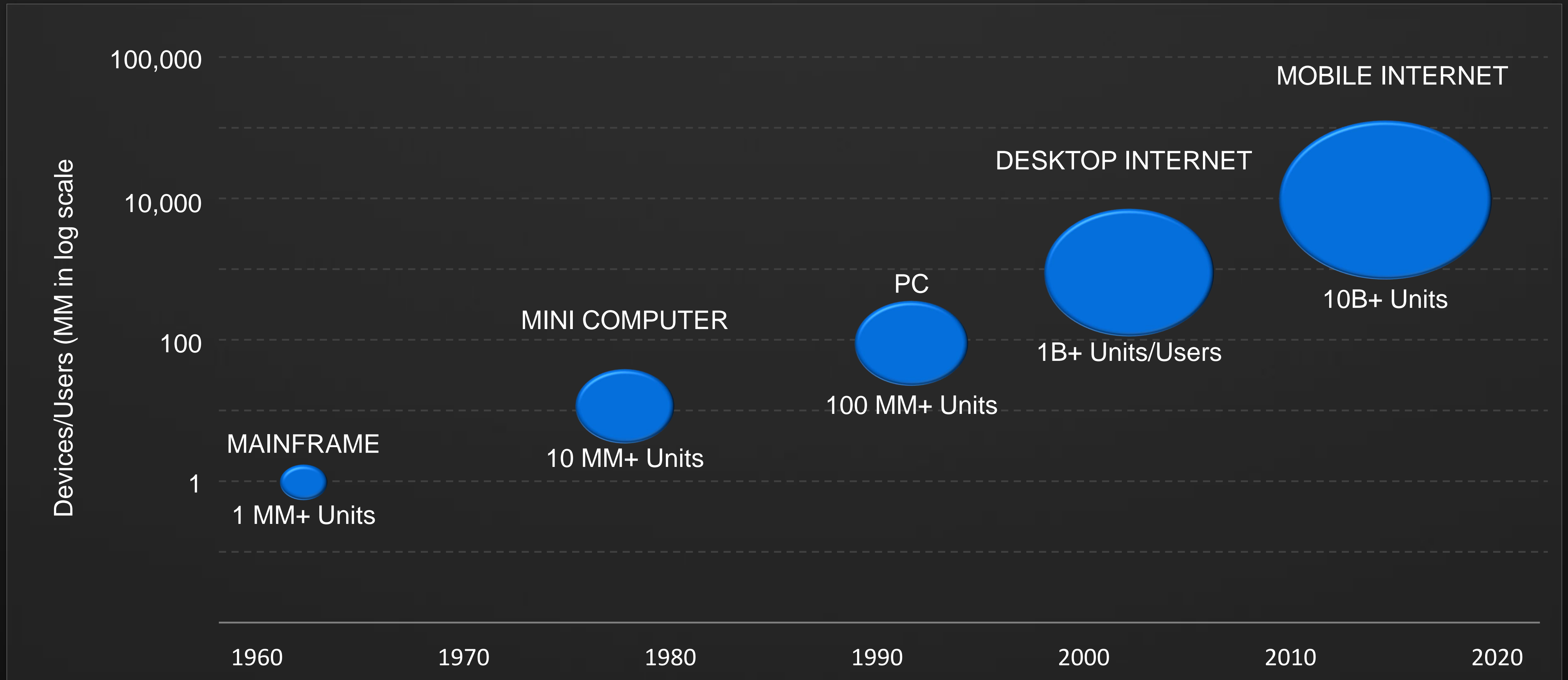
The Personal Computer: 80s – Disruption through access



Mobile & Cloud Computing: 2000s – Disruption through mobility



The world is changing fast and we are all adapting



Value Proposition:

The cloud means more than technology & mobility

- A new way of doing business - Termed business models
- A personalized experience - Identity-based access to software & services
- A smaller, connected world - Connected devices, teams, & people
- A customized experience - Configurable software, delivered on demand
- A seamless experience - Always up to date, it just works

Technology, Products & Platform

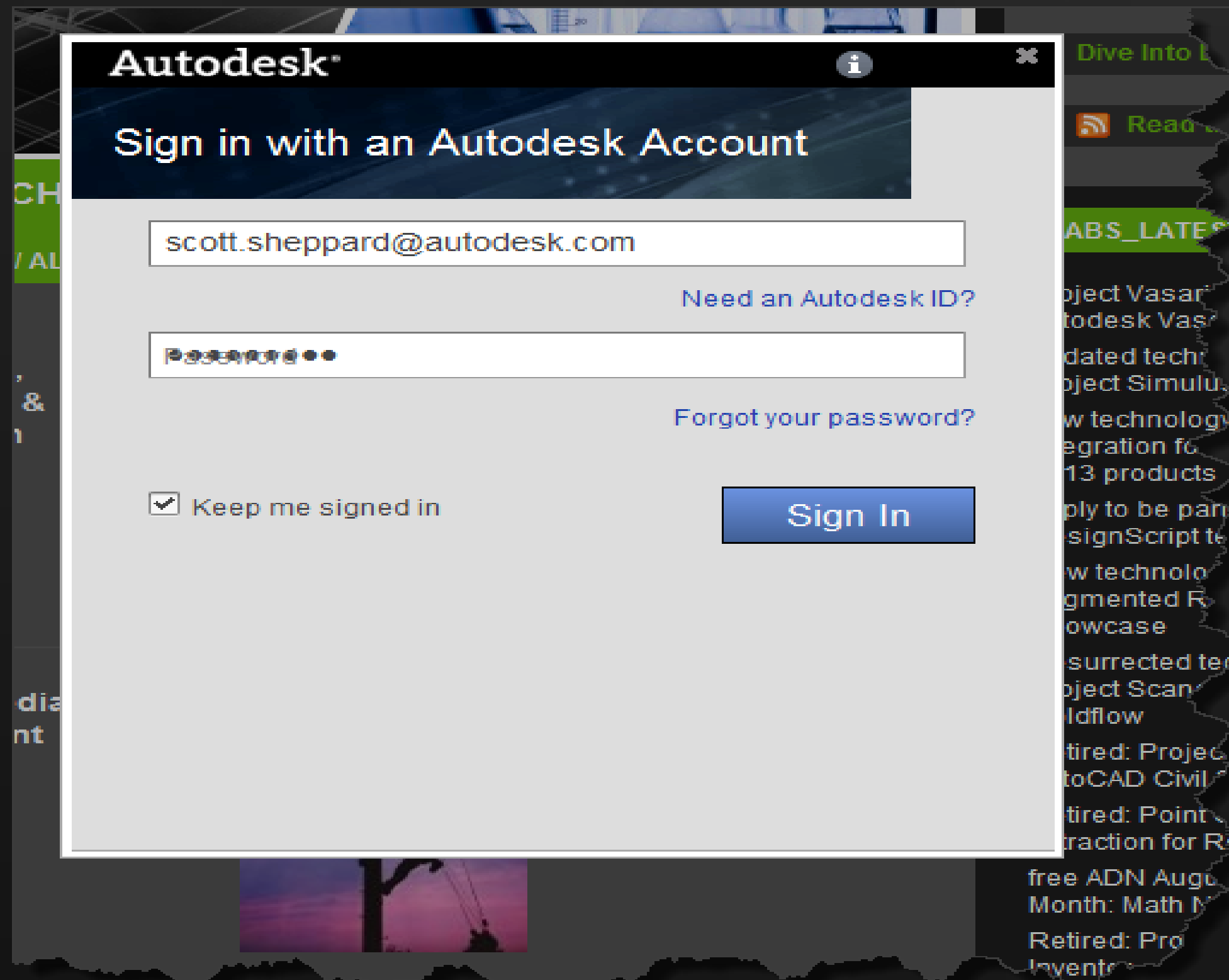
Current State: We are moving fast to the cloud

Many different cloud products & services, but they are not tied together



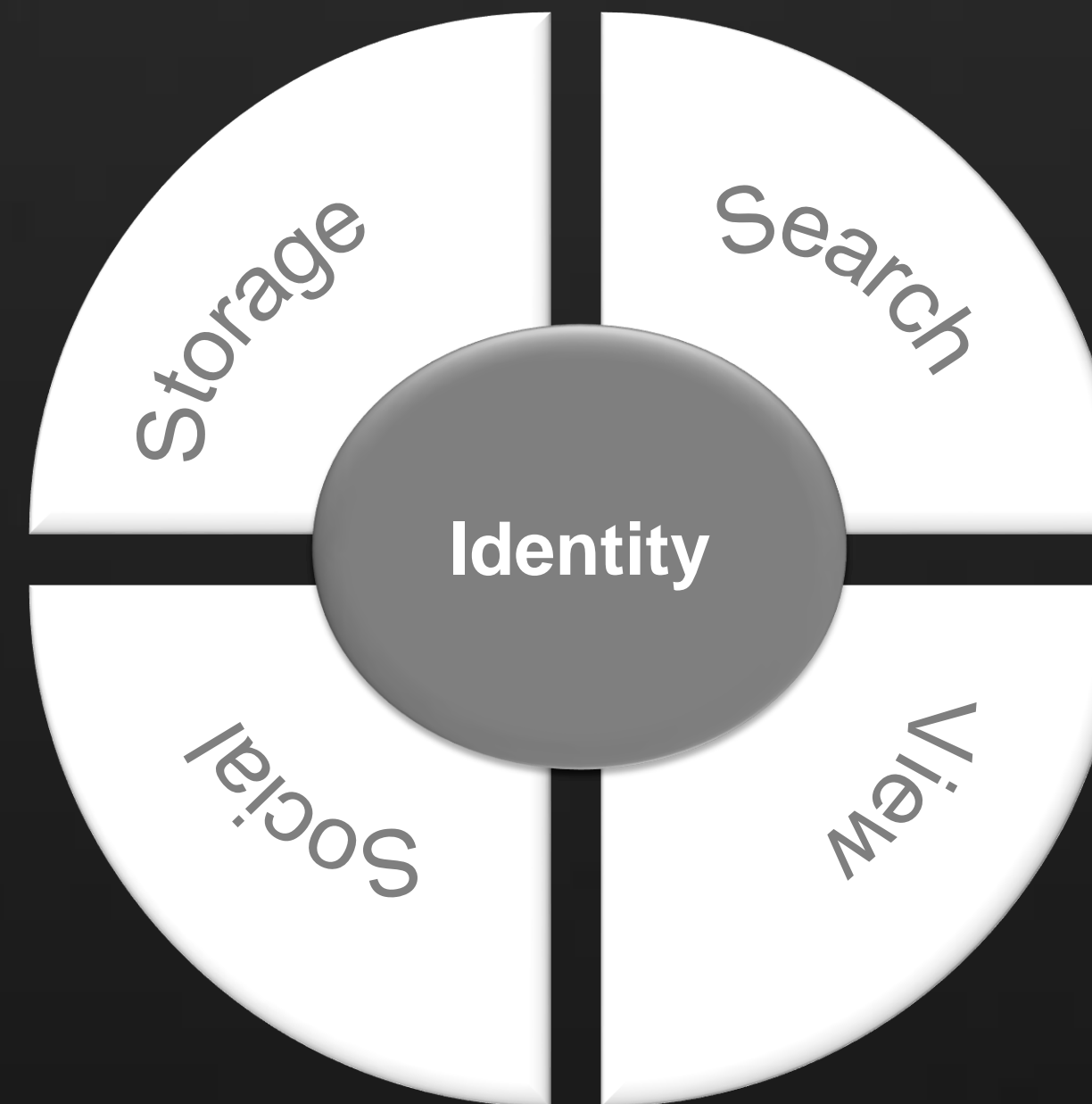
Future State: Autodesk 360 connects the eco-system

Connected experience - single sign on, data storage, viewing & social collaboration



Autodesk® 360

Core Cloud Platform



Autodesk® 360

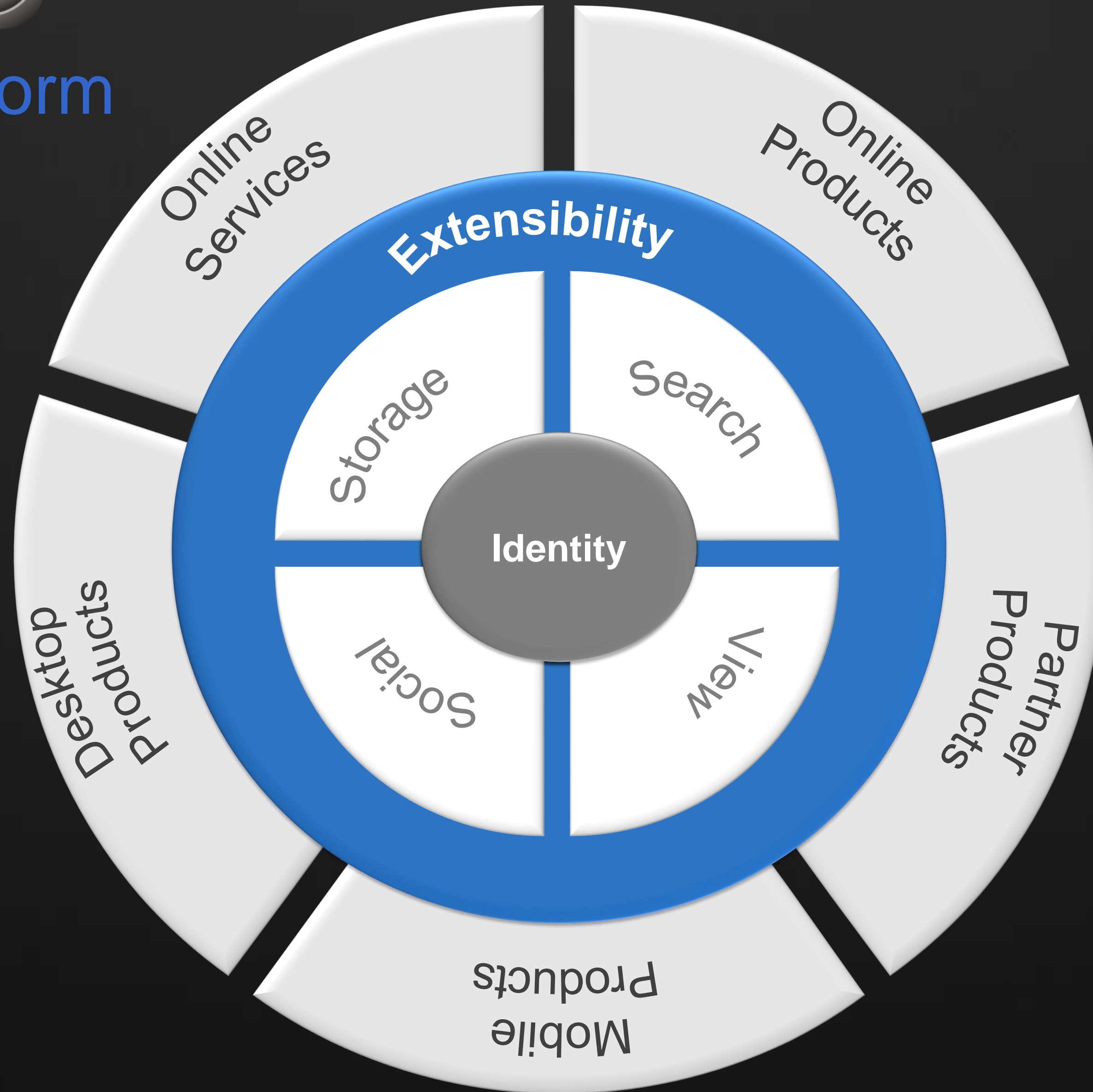
Core Cloud Platform



Core Cloud Platform

RaaS
Inventor Optimization
Documentation
Etc.

AutoCAD
Inventor
Revit
Etc.



BIM360
SIM360
PLM360
123D
Etc.

Partners

Autodesk® 360 Core capabilities

- **Identity**

- Single Sign On
- Active Directory
- User Administration

- **Data**

- Storage agnostic - Connected data experience
- Desktop Sync for Design Data
- Deep Search

- **View**

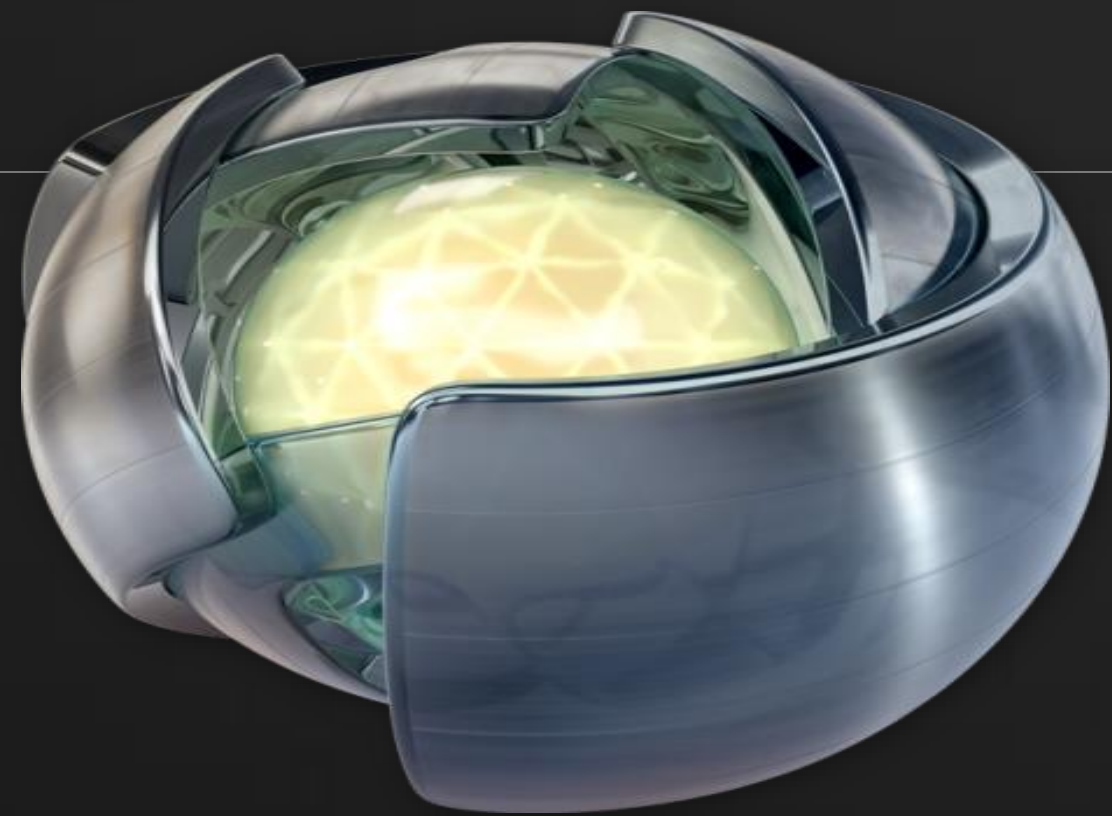
- File formats are irrelevant
- Consistent & accessible anywhere

- **Social/Collaboration**

- Groups
- Activities, Comments, Notifications
- Simplified sharing

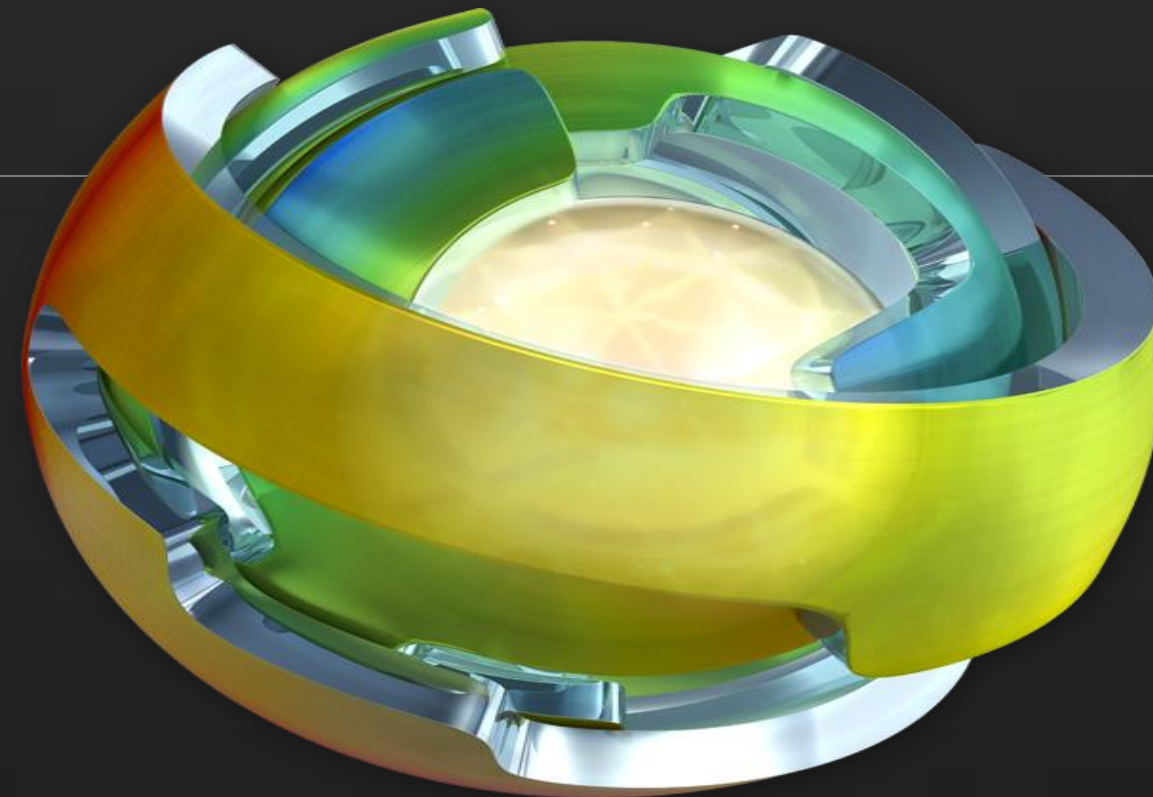
Accessing Autodesk 360

Packaging into Industry Specific and Vertical Solutions



BIM 360

- Publish, store, aggregate, and manage models in the cloud
- Share with authorized users
- Real-time access



Simulation 360

- Virtually infinite computer power
- Move compute-heavy tasks to the cloud



PLM 360

- Cloud-based, zero deployment
- Accessible on any device
- Up and running in minutes



Access to Autodesk 360 – Free solutions

Free - 3 GB Storage/User

Baseline Features

Document

- Storage
- Sharing
- Viewing

Apps

Free Apps

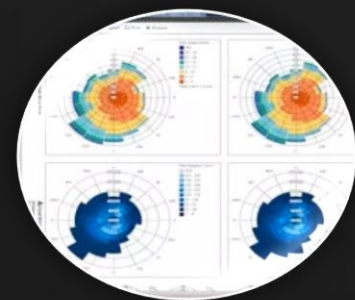
- Autodesk® 360
- Autodesk® Design Review
- AutoCAD® WS



Access to Autodesk 360 – Cloud services

Included with Subscription to Products/Suites - 25 GB storage/user

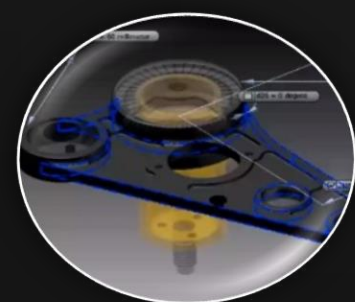
Free Features and Apps



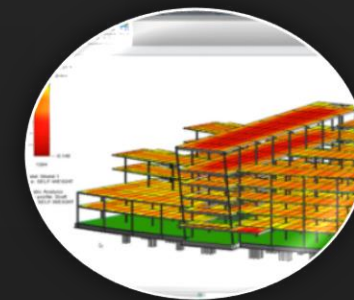
Yields detailed energy analysis
Autodesk® 360 Energy Analysis for
Autodesk Revit®



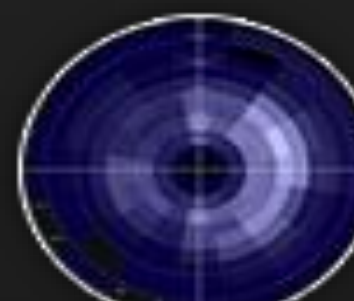
Reduces time and cost of
rendering
Autodesk® 360 Rendering



Extends ideation and simulation
beyond your desktop
Autodesk® 360 Optimization for Autodesk
Inventor



Enables you to explore more design
options
Autodesk® 360 Structural Analysis for Autodesk
Revit®



Helps optimize energy efficiency
Autodesk® Green Building Studio®



Exchange project information among
team members
Autodesk® Buzzsaw® for Vault
Collaboration AEC



Access to Autodesk 360 – Standalone Cloud Solutions

Available Standalone

Standalone

- Autodesk® Buzzsaw®
- Autodesk® PLM 360
- Autodesk® Moldflow® Insight WS
- Autodesk BIM 360™ Glue

Accessing Compute Services – Cloud Credits

A job is a unit of measure that assigns a task-based value for different compute-intensive activities. There are two different types of jobs visualization jobs and simulation jobs.

Subscription to:	Visualization jobs	Simulation jobs
Standalone products or Standard Suite	20	15
Premium Suite	30	20
Ultimate Suite	50	25

Security

Security & Operations

- Autodesk has been in the cloud since 1999 & receiving ISR's from since 2005
- Education around security will be a top priority
- Continuously staying current with security standards & audits
 - First SAS70 audit was July 2007
 - ISO 27001 standard
 - Least Privilege model: Moderated access
 - Safe Harbor Compliance Framework
 - Cloud Security Alliance / Cloud Audit
- Extensive security scans & assessments by 3rd party
- Government requirements on the horizon (FISMA – Fedramp certification)

Security



People

Dedicated Security Team

Full time team focused at information, application and network security

Least Privilege Access

Access tightly controlled with specific justification needed for production access

Background Checks

Background checks on all employees interacting with customer data

Process

Independent Security Reviews

Application and network penetration testing by 3rd parties

Change Control

Strict change control for production environments

SSAE16 SOC2/SOC3 Auditing

Outside auditor, audits capability and maturing of our operational processes and controls

Technology

Encryption

All data moving over public networks is encrypted

Firewalls

Logical and physical firewalls protect our products and data from malicious traffic

OS Security

Base operating systems are stripped and hardened specifically for our applications

Security Patch Management

Centralized patch management to guard against known vulnerabilities

Questions?

