

AR21415: Have Insight 360 With Your ReCAP 360 Pro Point Cloud

Joshua Benoist and Joel Harris
Senior Enterprise Priority Specialists
Autodesk



Class summary

We are going to discuss workflows from ReCAP 360 Pro, to Insight 360 where we can rapidly generate a Building Performance Analysis, starting from a point cloud.

Key learning objectives

At the end of this class, you will be able to:

- Generate a point cloud with ReCAP 360 Pro
- Convert the cloud to a model with Revit
- Bring your model into Insight 360
- Generate a Building Performance Analysis



Prerequisite Knowledge:

You should be familiar with ReCap 360 and Revit.

Familiarity with performing a BPA (Building Performance Analysis) using Green Building Studio, DOE2.2, Energy Plus, etc is a bonus. [Audience Participation]

Why ReCap 360 Pro to Insight 360 workflow?

- What makes Insight 360 different from other BPA tools?
 - With 2017.1, it's built right into Revit with no cloud credits required!
 - Cloud Generated "Ranges"... no more "Snapshots"!!!
- Can it be useful with Existing buildings?
 - Where does our existing building currently stand on the "Cost Curve?"
 - What factors are important to focus on so as to value engineer?



ReCAP 360 Pro

- Learn how to generate a point cloud with ReCAP 360 Pro

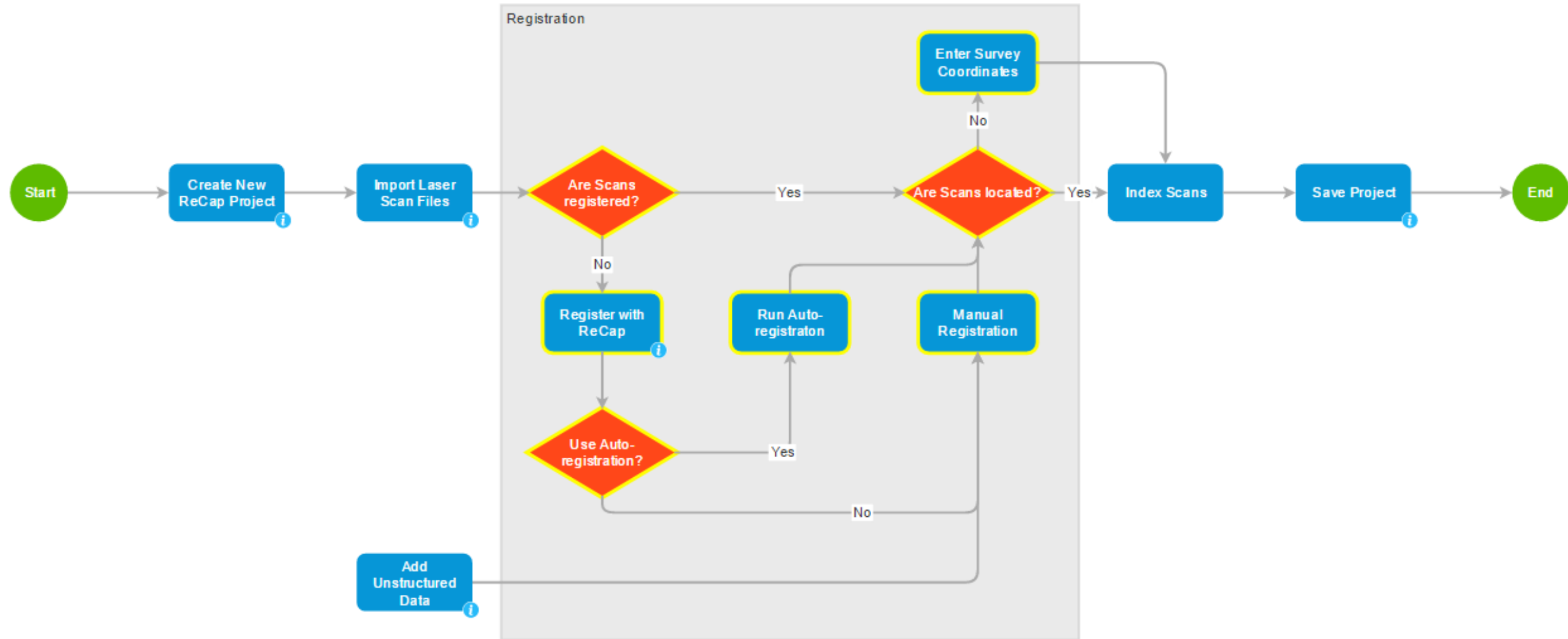
ReCAP 360 Pro

- Terrestrial laser scan workflow:



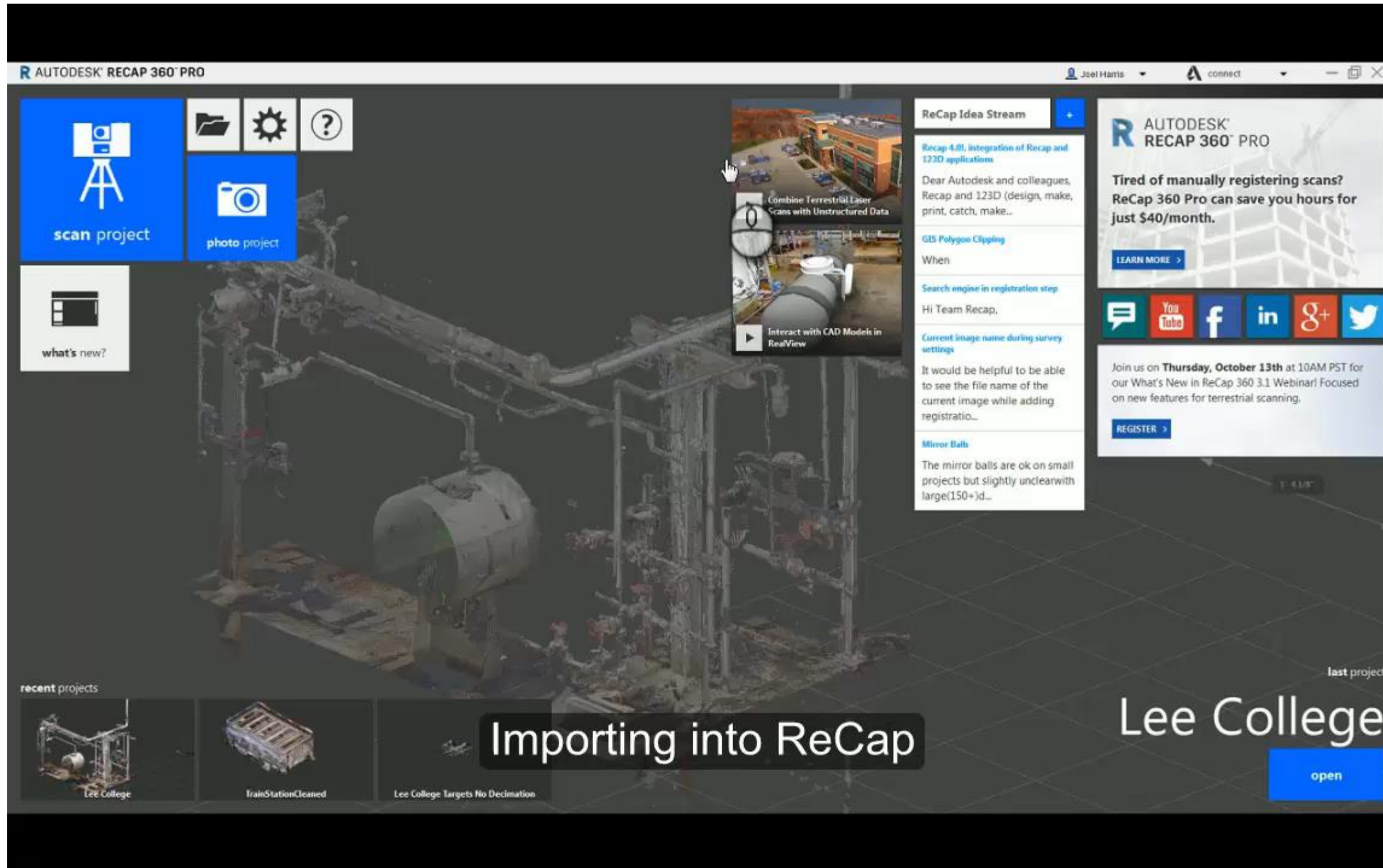
ReCAP 360 Pro

- Terrestrial laser scan workflow:

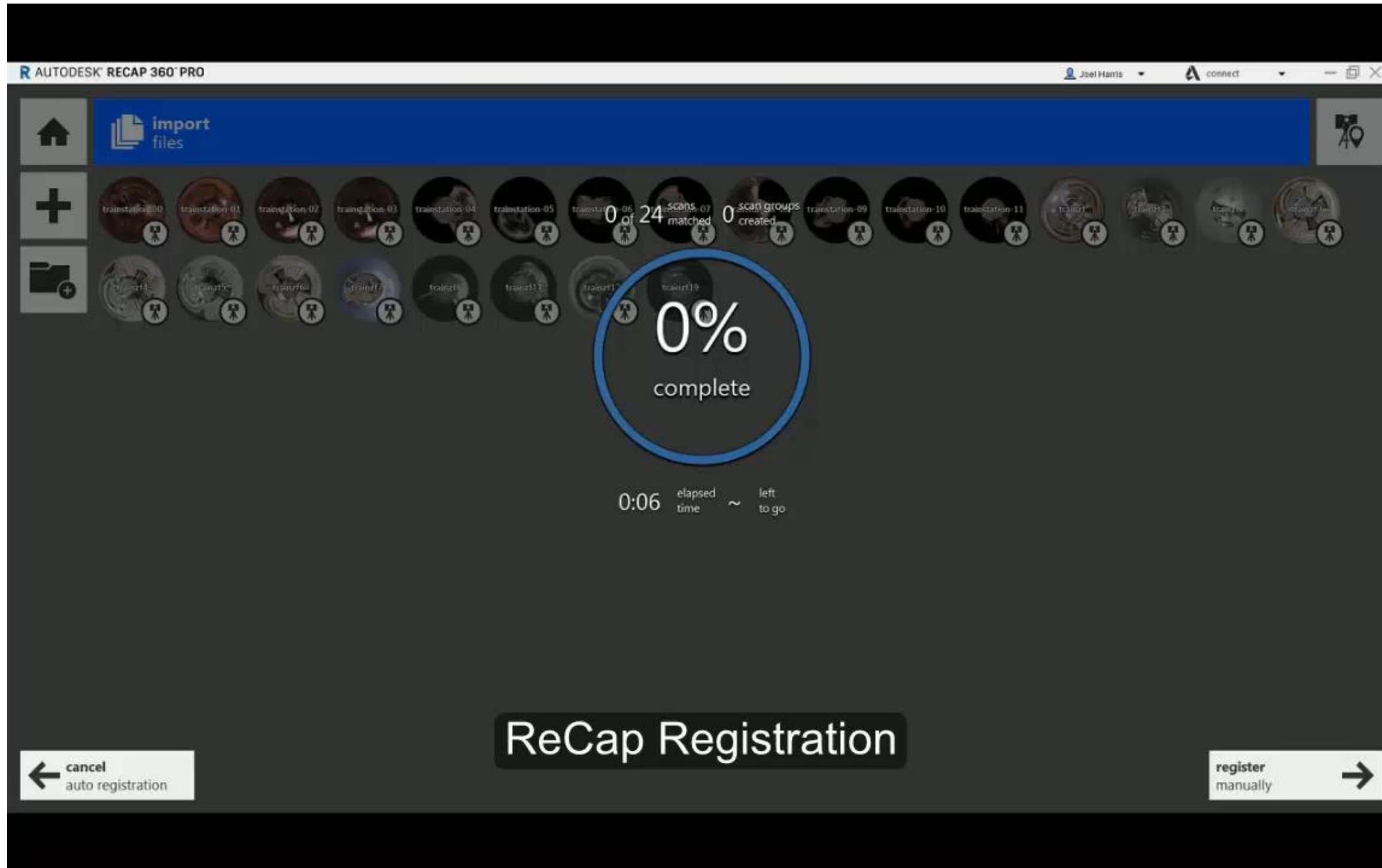


<https://praxis.autodesk.com/praxis/viewer/3930f85121a60c33fb7fb0c32c3095d223bea988>

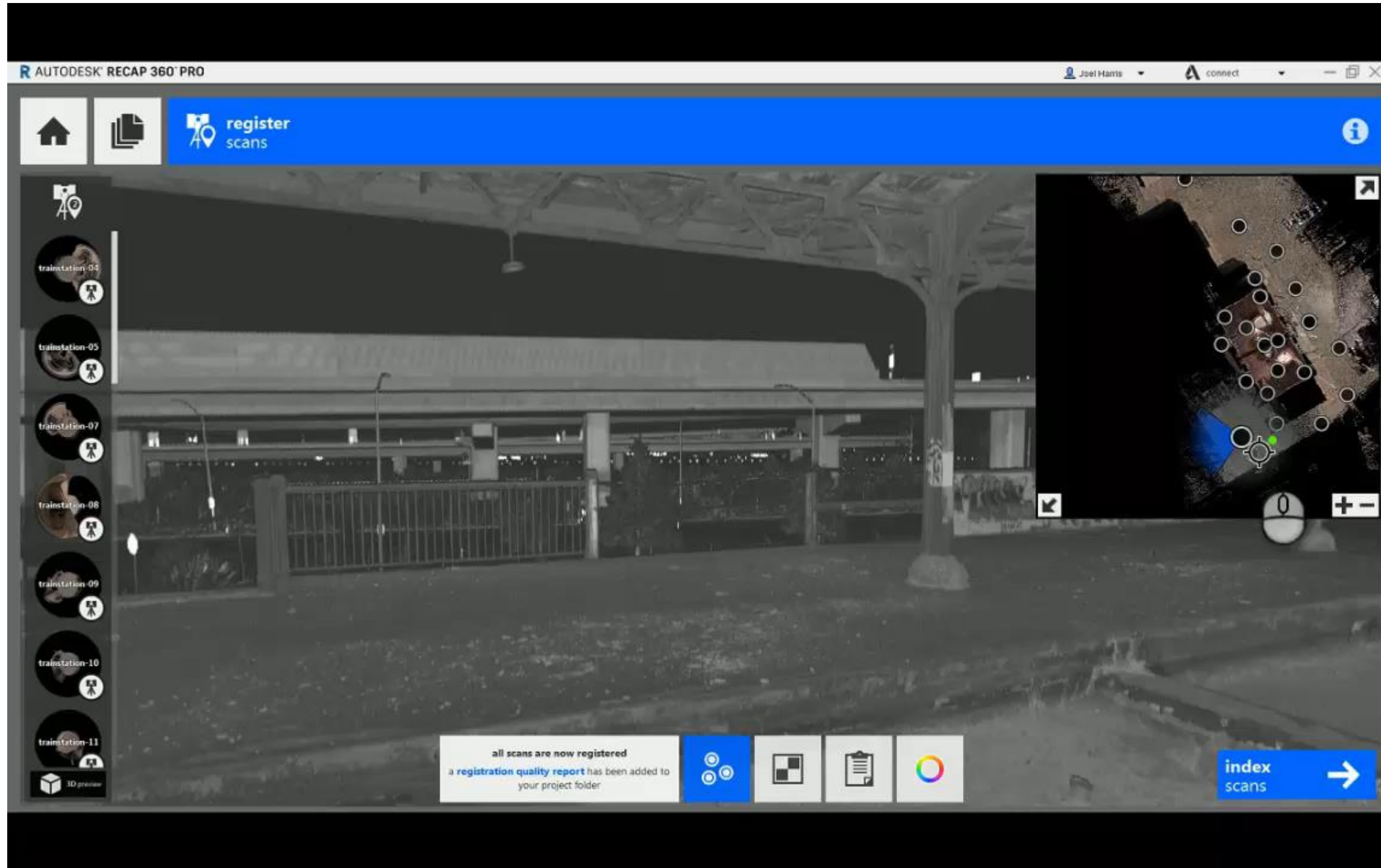
ReCAP 360 Pro - Importing



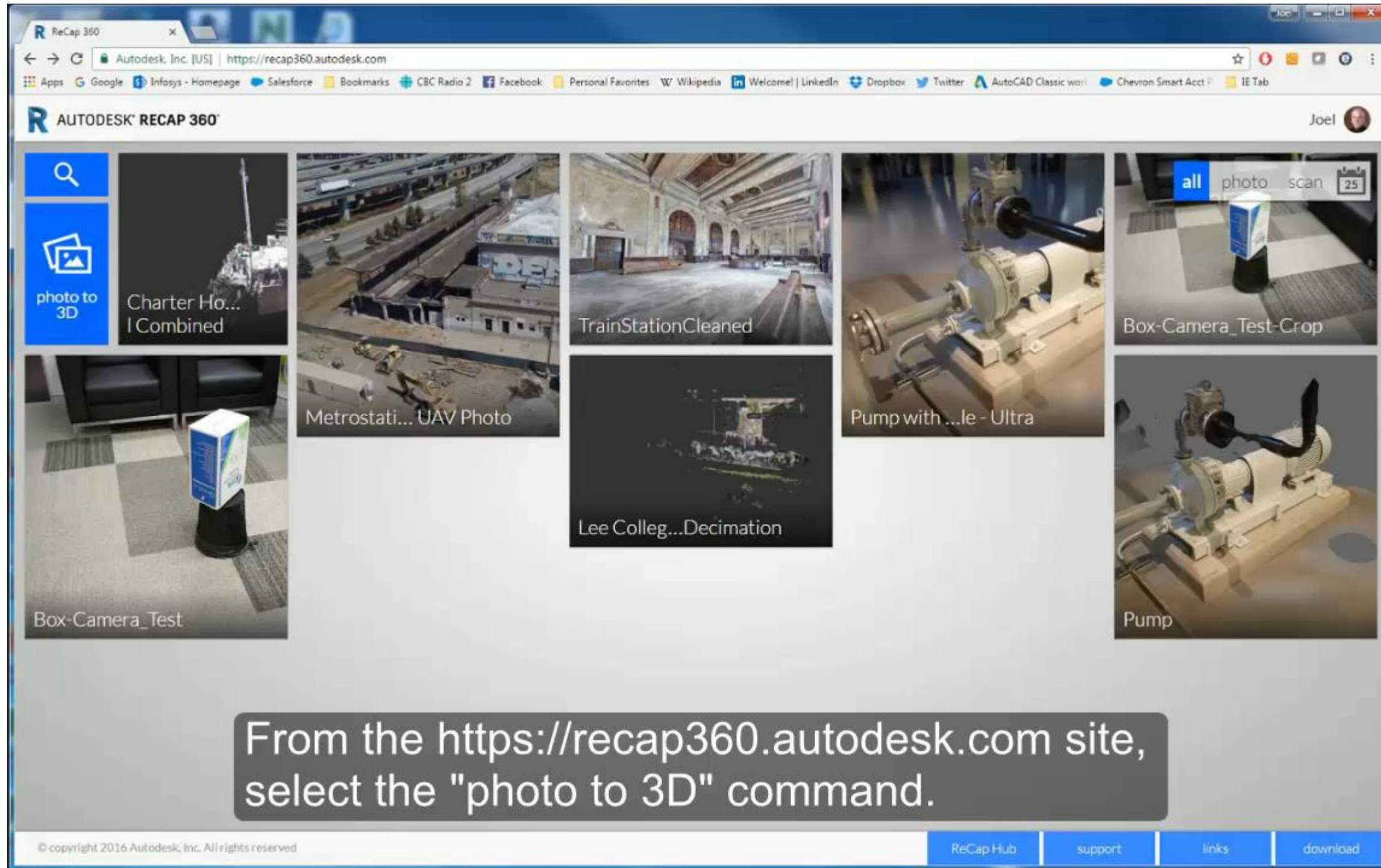
ReCAP 360 Pro - Registration



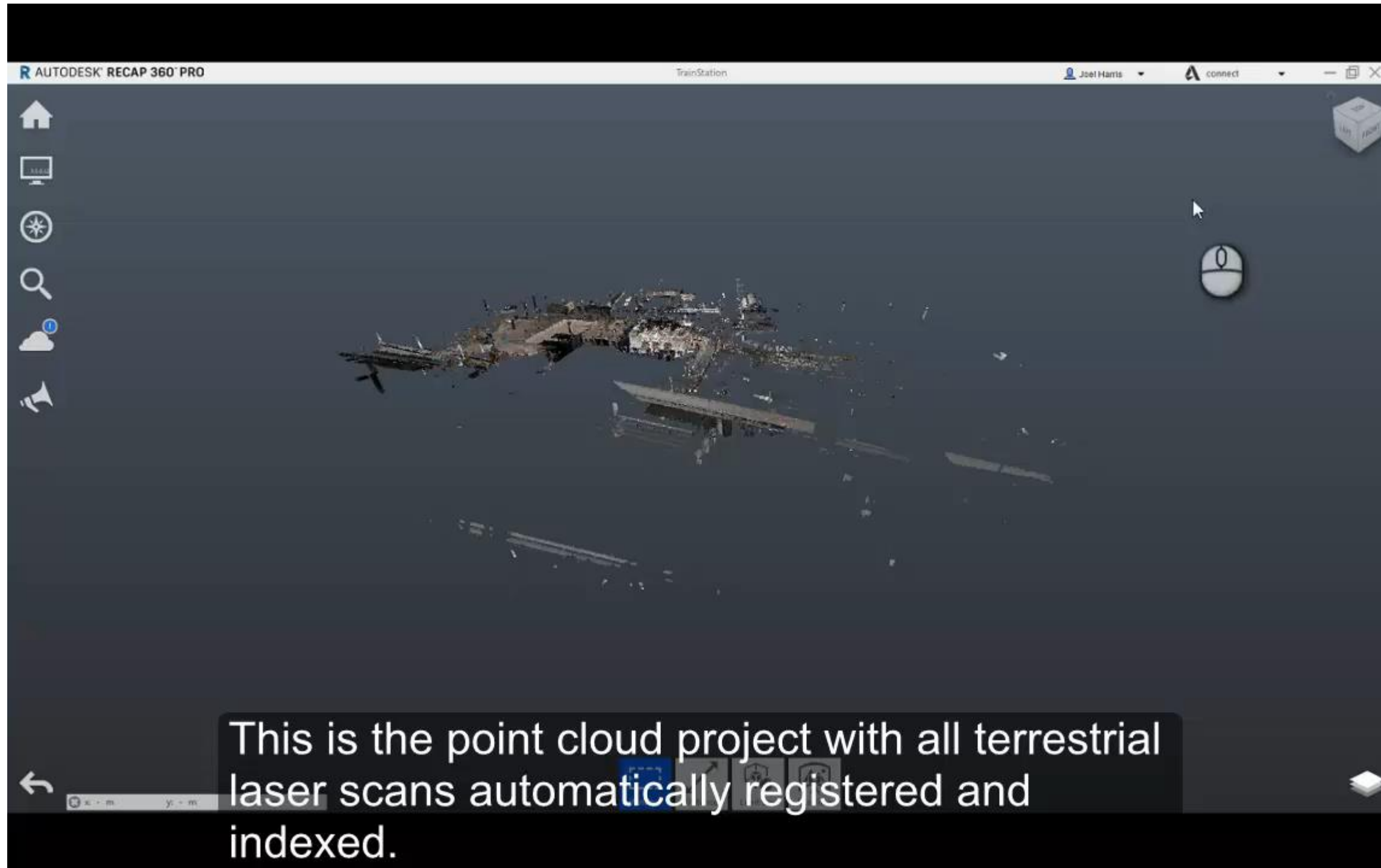
ReCAP 360 Pro – Indexing and Editing



ReCAP 360 Pro – Photo to 3D



ReCAP 360 Pro – Manual Registration



Revit and the Energy Analysis Model

- Learn how to bring your model into Insight 360



Energy Optimization and Insight 360

- Learn how to generate ~~a building performance analysis~~
an *Energy Optimization Analysis!*

By show of hands did you learn anything today?

What would you take back on Monday and put to immediate use?

PLEASE FILL OUT A SURVEY

We want to know what you think about this class.

THANK YOU FOR YOUR TIME!

