

AS468502-L

AutoCAD Customization Boot Camp: Basic (No Experience Required)

Lee Ambrosius
Autodesk, Inc.

Learning Objectives

- Learn how to create command aliases
- Learn how to write and run script files
- Learn how to create and modify tool palettes
- Learn how to modify the ribbon and Quick Access toolbar

Description

Customizing the AutoCAD software or AutoCAD LT software is a great way to increase productivity, but many users are unsure of how to get started. In this lab, you'll learn about several of the basic customization features that you can use to simplify workflows and reduce repetitive tasks. You can customize features such as command aliases and the ribbon to improve access to frequently used commands, and you can create tool palettes and script files to reduce the number of steps required to complete a task.

Speaker(s)

Lee Ambrosius is a Principal Learning Experience Designer at Autodesk, Inc., for the AutoCAD® and AutoCAD LT products on Windows and Mac. He works primarily on the customization, developer, and CAD administration documentation along with the user documentation. Lee has presented at Autodesk University for about 15 years on a range of topics, from general AutoCAD customization to programming with the ObjectARX technology. He has authored several AutoCAD-related books, with his most recent project being *AutoCAD Platform Customization: User Interface, AutoLISP, VBA, and Beyond*. When Lee isn't writing, you can find him roaming various AutoCAD community forums, posting articles on his or the AutoCAD blog, or tweeting information regarding the AutoCAD product.

Twitter: @leeambrosius

Email: lee.ambrosius@autodesk.com

Blog: <http://hyperpics.blogs.com>

1 Introduction

The AutoCAD software is an extensive 2D drafting and 3D modeling program that has grown in functionality since it was first introduced over 35 years ago back in 1982. What sets AutoCAD apart from many other CAD programs is its expansive customization and automation capabilities. The customization and programming features of AutoCAD allow individuals and companies to simplify everyday workflows, such as:

- Initial drawing setup; establish drawing units and format, create layers, insert a title block and populate attribute values
- Extraction of design data for use downstream in a bill of materials or order entry system
- Consumption of project information from a data source such as a spreadsheet or database

This hands-on lab will provide you with the opportunity to roll-up your sleeves and get some experience with customizing AutoCAD and how to apply the techniques covered to your everyday workflows. While knowing how to program isn't a requirement to customizing AutoCAD, learning how to program does provide you with a greater set of tools to automate everyday tasks in AutoCAD.

2 Which Customization and Programming Options are Available

Not all customization and programming options are created equally, some options are easy to learn and well integrated into the AutoCAD program that many don't even realize they are customizing the program. For example, creating new layers and named styles are forms of customization that many frequently perform. There are two types for customization and programming that are available; drawing and application.

The following lists many of the customization and programming options available:

Basic

Drawing	Application
<ul style="list-style-type: none"> • Layers • Annotation styles (text, dimensions, multileaders, and tables) • Blocks • Materials and visual styles • Drawing templates 	<ul style="list-style-type: none"> • Desktop shortcut • Command aliases • Tool palettes • Workspaces • User profiles • Plot styles

Intermediate

Drawing	Application
<ul style="list-style-type: none"> • Dynamic blocks 	<ul style="list-style-type: none"> • Scripts • Action macros • User interface (CUI Editor) • DIESEL • Custom linetypes and hatch patterns • Custom shapes and text styles

Advanced (Application Only)

- AutoLISP / Visual LISP
- Visual Basic for Applications (VBA)
- ActiveX / COM (VBA, VBScript, VB.NET, C#, C++)
- Database connectivity
- Managed .NET (VB.NET, C#)
- ObjectARX (C++)
- JavaScript
- Sheet Set Manager API
- CAD Standards plug-ins
- Transmittal API
- Connectivity Automation API
- Forge Platform APIs

3 What You Need to Get Started

For this hands-on lab, you will need:

- This handout
- Dataset from the Autodesk University website; see exercise *E0 Download and Setup the Dataset Folder and Add it to AutoCAD's Support File Search Path*
- AutoCAD 2010 and later installed on your workstation
- Notepad

4 Supplemental Content

See the separate *Supplement-AS468502-L-Ambrosius-AU2020.pdf* for the supplemental content in the dataset related to this session.

5 Exercises

This section contains all the exercises that will be covered during this lab or when you get back to the office.

E0 Download and Setup the Dataset Folder and Add it to AutoCAD's Support File Search Path (<2 min)

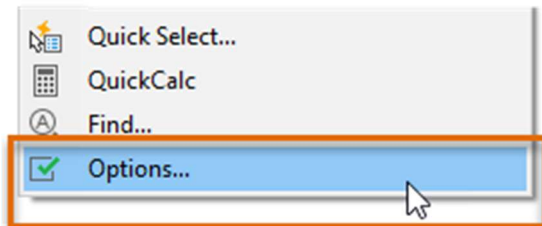
This exercise explains how to download and setup the dataset folder for this session, and then add that folder to the Support File Search Path setting in the Options dialog box of the AutoCAD program.

These steps explain how to download and extract the contents of this session's dataset:

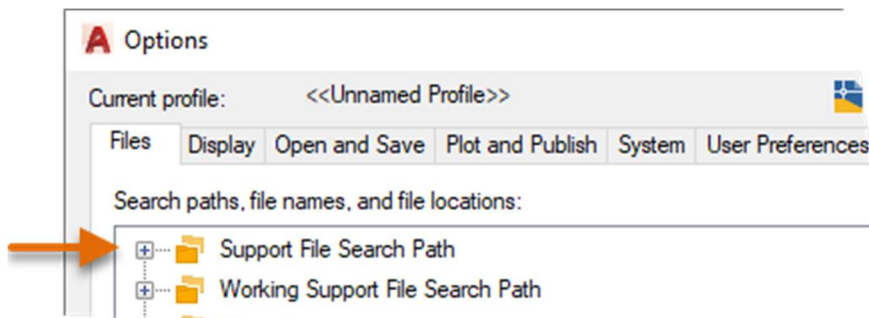
1. Browse to this session's page on the Autodesk University website.
Go to <https://www.autodesk.com/autodesk-university/conference/overview> and search on the session ID **AS468502**.
2. In the search results, click the entry for this session.
3. On the session's page, click Downloads and then click Dataset.
The dataset should start downloading to your local drive.
4. Once the dataset has been downloaded, extract the contents of the ZIP file to:
`C:\Datasets\AS468502-L`

These steps explain how to add this session's dataset folder to the Support File Search Path setting in the Options dialog box of the AutoCAD program.

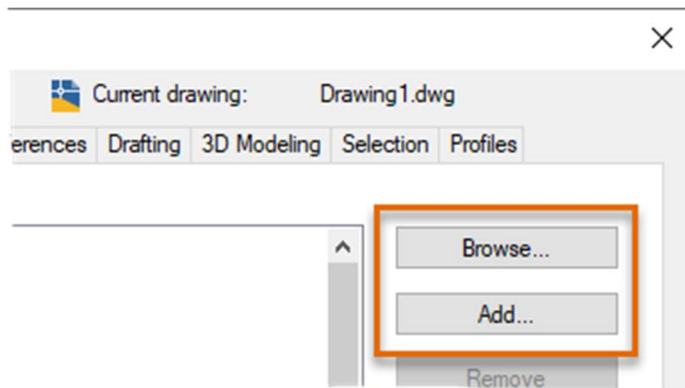
1. Launch AutoCAD and create a new drawing.
2. In the drawing area, right-click and choose Options.



3. In the Options dialog box, Files tab, select the Support File Search Path node.

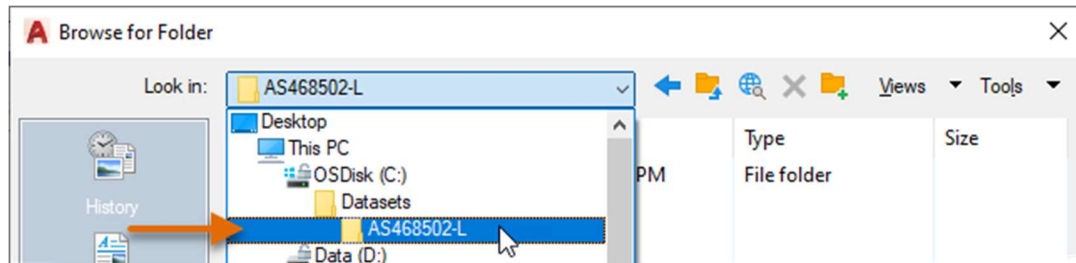


4. On the right side, click Add and then click Browse.

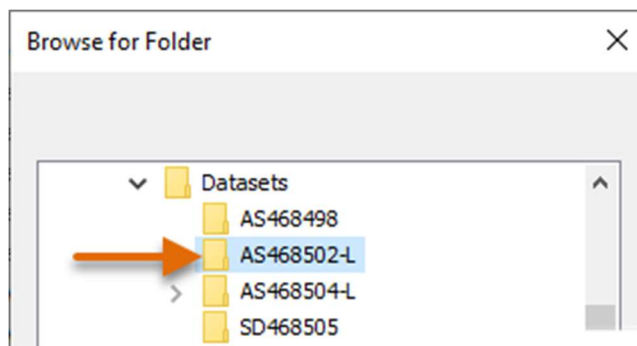


5. Do one of the following:

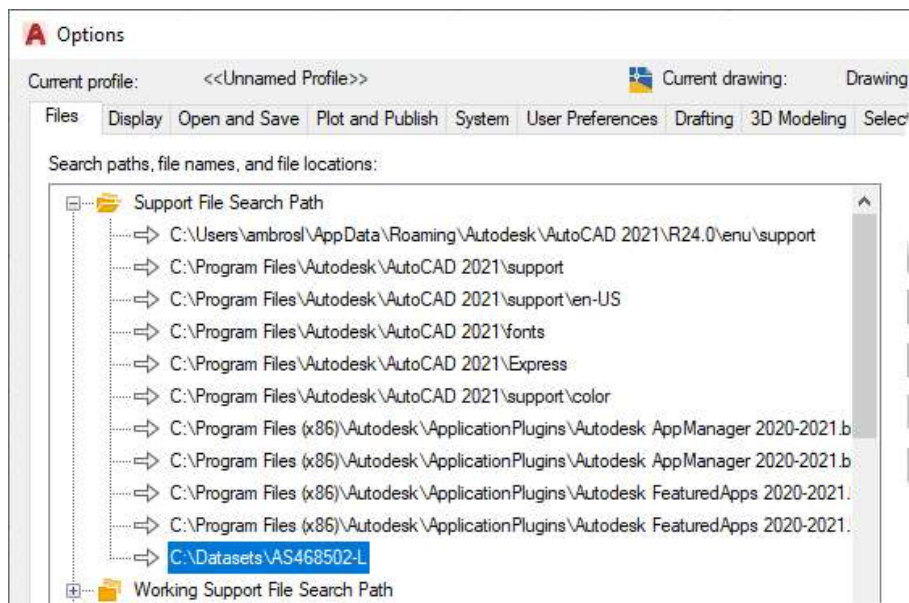
- **AutoCAD 2021:** In the Browse for Folder dialog box, browse to and select the folder for this session. Click Open.



- **AutoCAD 2020 and earlier:** In the Browse for Folder dialog box, browse to and select the folder for this session. Click OK.



The location and name of the dataset folder for this session should be
C:\Datasets\AS468502-L



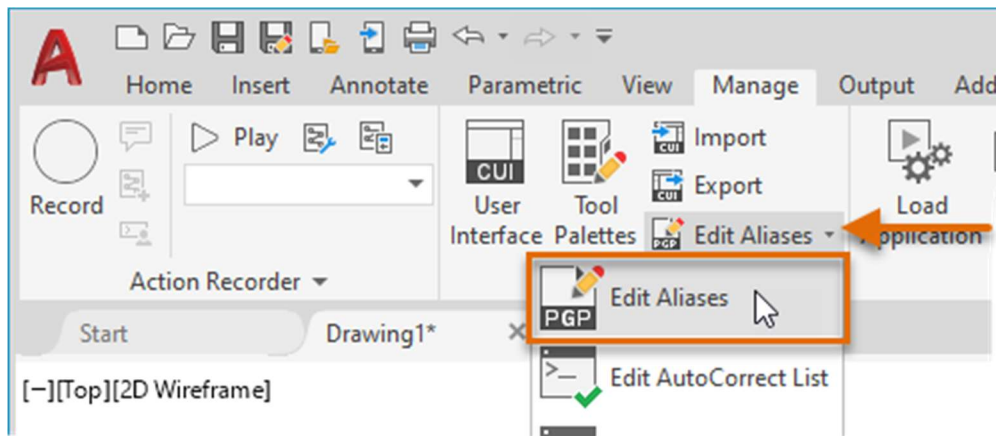
6. Click OK to exit the Options dialog box and save the path change made.

E1 Define Custom Command Aliases (2-3 mins)

This exercise explains how to define a command alias to start the REVCLLOUD command, override the C command alias to start the COPY command rather than the CIRCLE command, and create a new alias for the CIRCLE command.

Note: The resulting *acad.pgp* file from this exercise can be found in the *Completed* folder of the dataset. The *acad.pgp* file is based on the shipping version of AutoCAD 2021.

1. In AutoCAD, on the ribbon, click Manage tab > Customization panel > Edit Aliases drop-down menu > Edit Aliases.



2. In Notepad, text editor area, scroll to the bottom of the file and click in the blank line just below the last line:

```
; *****-----***** ; No xlate ; DO NOT REMOVE
```

3. Type the following text:

```
RV, *REVCLLOUD
```

```
C, *COPY
```

```
CC, *CIRCLE
```

The PGP file should now look like the following:

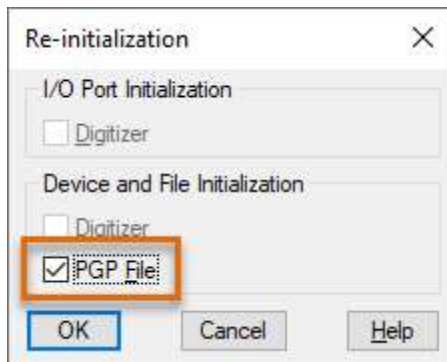
```
; *****-----***** ; No xlate ; DO NOT REMOVE
```

```
RV, *REVCLLOUD
```

```
C, *COPY
```

```
CC, *CIRCLE
```

4. In Notepad, click File menu > Save.
5. Switch back to the AutoCAD program.
6. In AutoCAD at the Command prompt, type **REINIT** and press Enter.
7. In the Re-initialization dialog box, click PGP File (should now be checked) and click OK.



8. At the Command prompt, type **RV** and press Enter.
The REVCLOUD command should start.
9. Specify two points for the revision cloud or press Esc to cancel the command.
10. Test the C and CC command aliases as well.

E2 Create and Run a Script (4-5 mins)

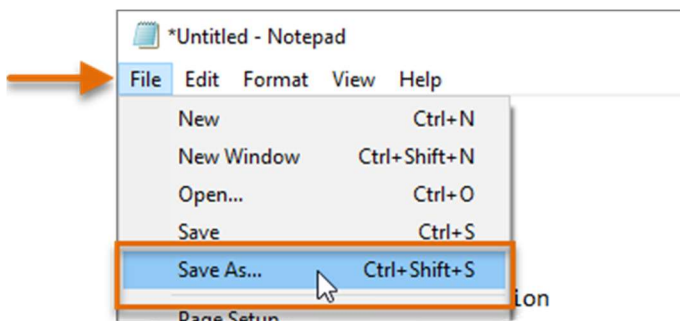
This exercise explains how to create and run a script file. The script file inserts a title block and configures some basic drafting settings.

Note: The resulting script (SCR) file created from this exercise can be found in the *Completed* folder of the dataset under the filename *startup.scr*.

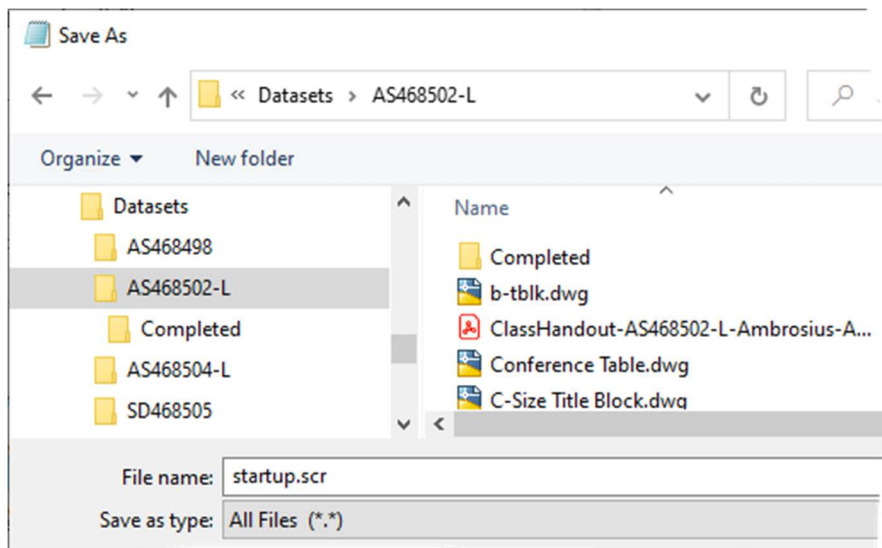
1. In AutoCAD, at the Command prompt, type **notepad** and press Enter twice.
Notepad will open with an empty document.
2. In Notepad, text editor area, type the proceeding text and press Enter (↵) after each line and make sure there is a single blank line after the last line.

```
limits 0,0 408,264↵
-insert b-tblk 0,0 24 24 0↵
zoom extents↵
orthomode 1↵
gridmode 0 snapmode 0↵
osmode 32↵
wscurrent Drafting & Annotation↵
```

3. On the menu bar, click File menu > Save As.



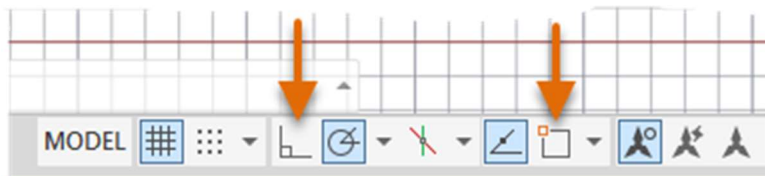
4. In the Save As dialog box, browse to the dataset folder for this session.
The location and name of the dataset folder for this session should be
C:\Datasets\AS468502-L
5. In the File name text box, select the default text and type **startup.scr**.



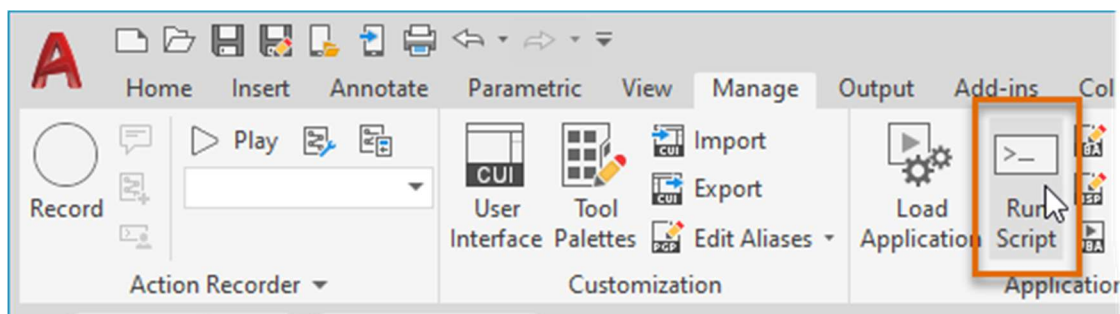
6. Click the Save As Type drop-down list and choose All Files (*.*).
7. Click Save.

In these steps, you manipulate some of the drafting settings that will be changed by the script when ran in AutoCAD.

1. Switch back to AutoCAD.
2. On the status bar, disable Orthomode and Object Snap.



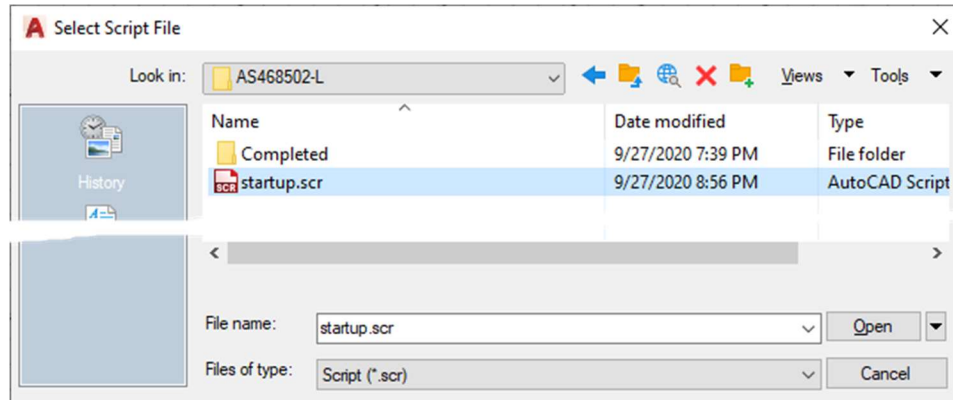
3. On the ribbon, click Manage tab > Applications panel > Run Script.



4. In the Select Script File dialog box, browse to the dataset folder for this session and select the *startup.scr* file that you created earlier. Click Open.

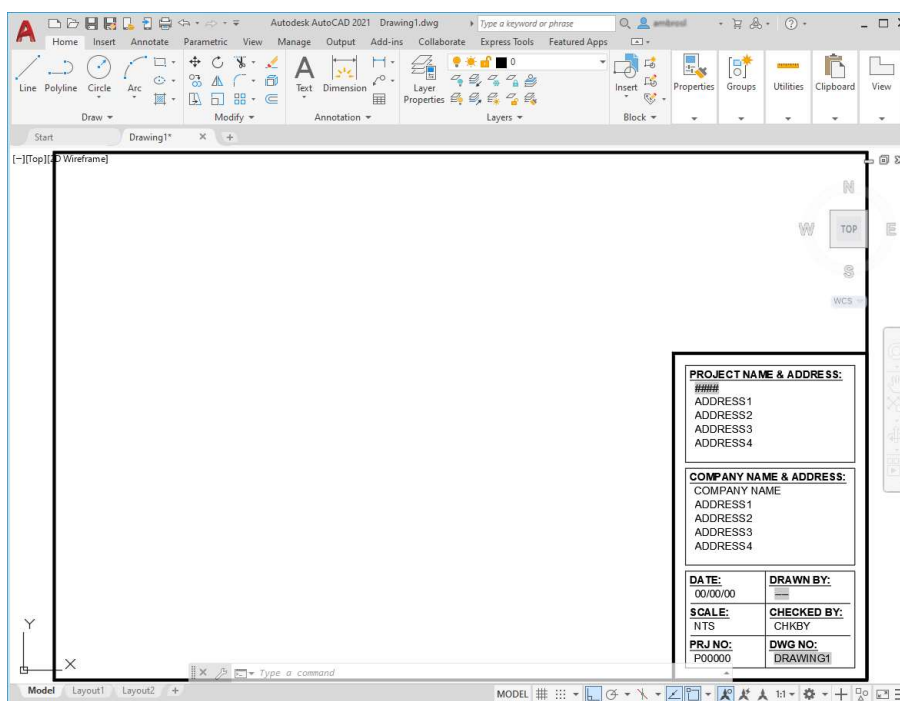
The location and name of the dataset folder for this session should be

C:\Datasets\AS468502-L



After the script finishes running, you should notice that:

- The drawing limits have been set
- The drawing grid has been turned off, and the drafting aids orthomode and object snaps have been enabled
- A title block has been inserted into Model Space and the drawing has been zoomed to the extents of the title block
- The Drafting & Annotation workspace has been set current, unless it was already current



Note: If the script file doesn't successfully run as expected, check the syntax of the script and make sure the dataset folder for this session has been added to the AutoCAD support file search path so it can locate the *b-tblk.dwg* file. Refer to the *E0 Download and Setup the Dataset Folder and Add it to AutoCAD's Support File Search Path* exercise for more information.

E3 Create a Tool Palette and Tools (5-6 mins)

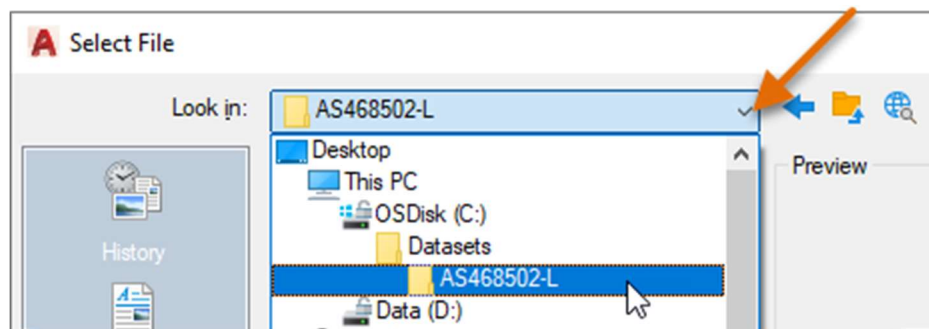
This exercise explains how to create a new tool palette with tools based on existing geometry in a drawing, a command tool defined in the AutoCAD customization (*acad.cuix*) file, and files stored in the dataset folder.

Note: The resulting tool palette created from this exercise can be found in the *Completed* folder of the dataset under the filename *My Tools.xtp*. You can use the Customize dialog box (CUSTOMIZE command) to import the completed tool palette.

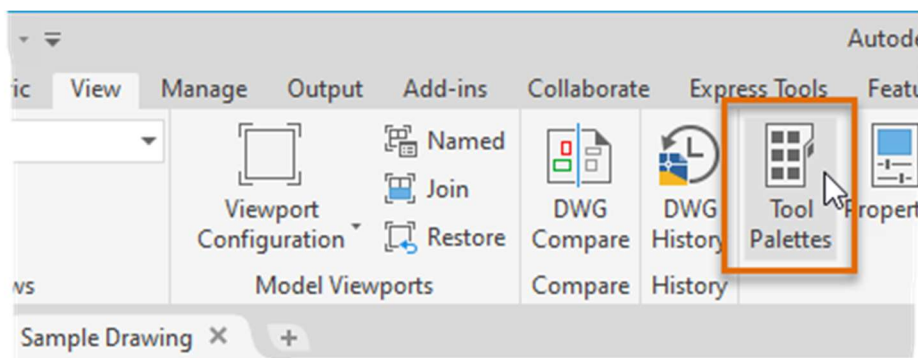
The following steps explain how to create a new tool palette:

1. In AutoCAD, open the *Sample Drawing.dwg* file from the *C:\Datasets\AS468502-L* folder or the folder in which the dataset for this session is stored.

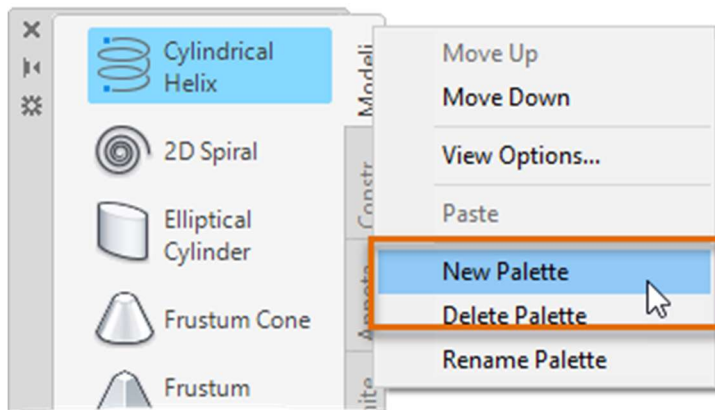
Tip: In the File Name text box, type *c:* and press Enter to get to the root level of C:.



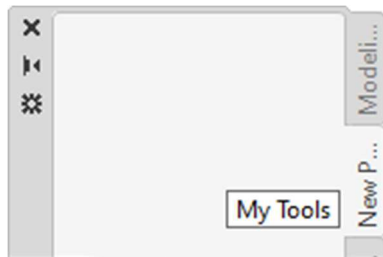
2. On the ribbon, click View tab > Palettes panel > Tool Palettes to display the Tool Palettes window if it isn't already displayed.



- On the Tool Palettes window, right-click over a tab and choose **New Palette**.



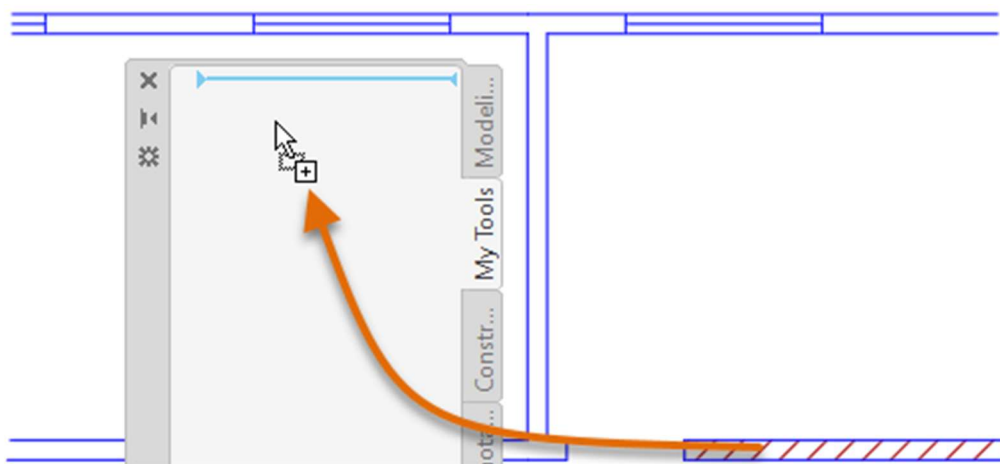
- In the in-place editor, type **My Tools** and press Enter.



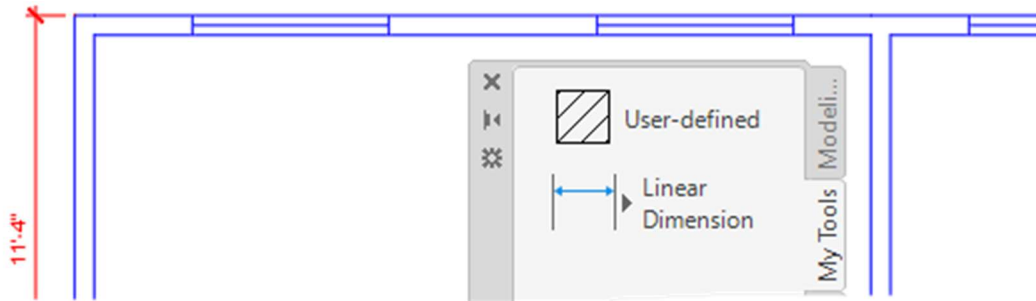
Note: If the in-place editor closes and the default name is accepted, right-click over the new tool palette's tab and choose Rename Palette. Type the new name and press Enter.

In these steps, you add new tools to the My Tools tool palette:

- Zoom to the extents of the sample drawing.
- Select the hatch object located in the walls along the right side of the drawing. Press and hold down the **right mouse** button, and then drag the cursor over the My Tools palette.

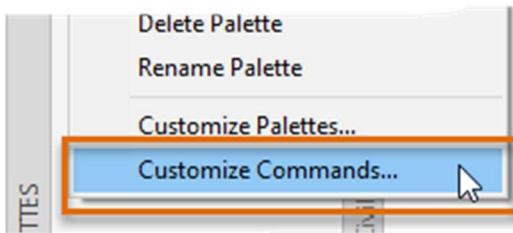


3. Release the mouse button to create a new hatch tool based on the properties of the selected hatch object.
4. Select and drag the dimension from the left side of the drawing and drop it onto the My Tools palette.

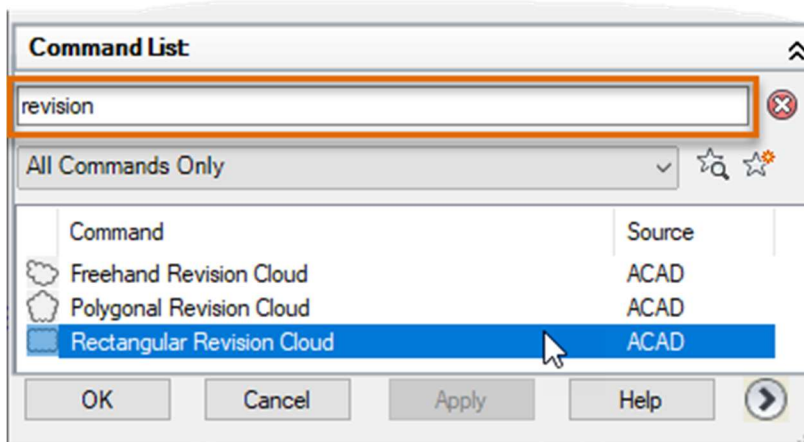


You should now have two tools on the My Tools palette.

5. In an empty area of the My Tools palette or over the title bar of the Tool Palettes window, right-click and choose **Customize Commands**.

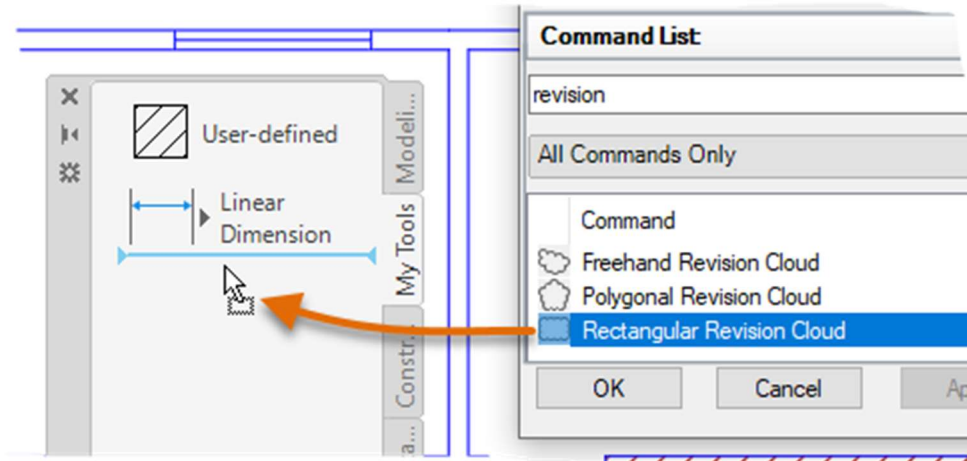


6. In the Customize User Interface (CUI) Editor, Command List pane, click in the Search Command List text box and type **revision**.



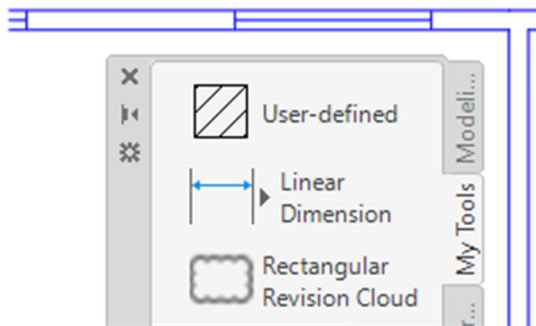
7. In the Commands list, select the Rectangular Revision Cloud command.

8. Press and hold down the **left mouse** button over the selected command and drag the command over to the My Tools palette.



Note: You might need to move the Customize User Interface (CUI) Editor to see the Tool Palettes window.

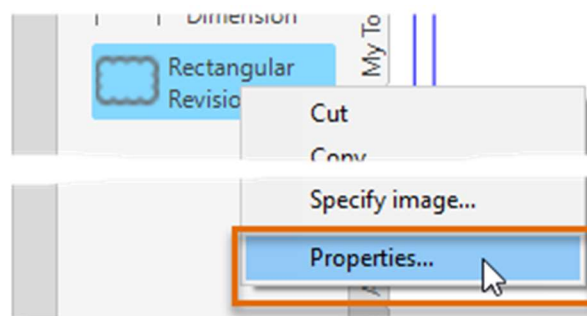
9. Release the mouse button to add the new Command tool.



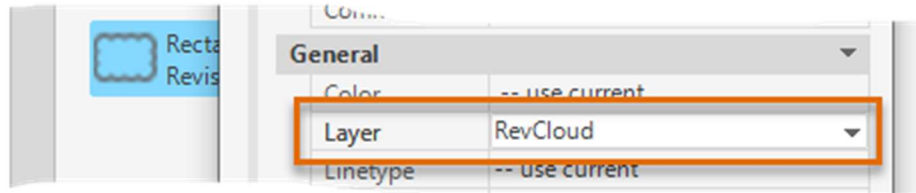
10. In the Customize User Interface (CUI) Editor, click Cancel (or OK) to close the editor.

The following steps explain how to modify the properties of a tool:

1. On the Tool Palettes window, right-click over the Rectangular Revision Cloud tool and choose Properties.



2. In the Tool Properties dialog box, General section, click the Layer field and choose **RevCloud** from the drop-down list.



3. Click OK to apply the change.

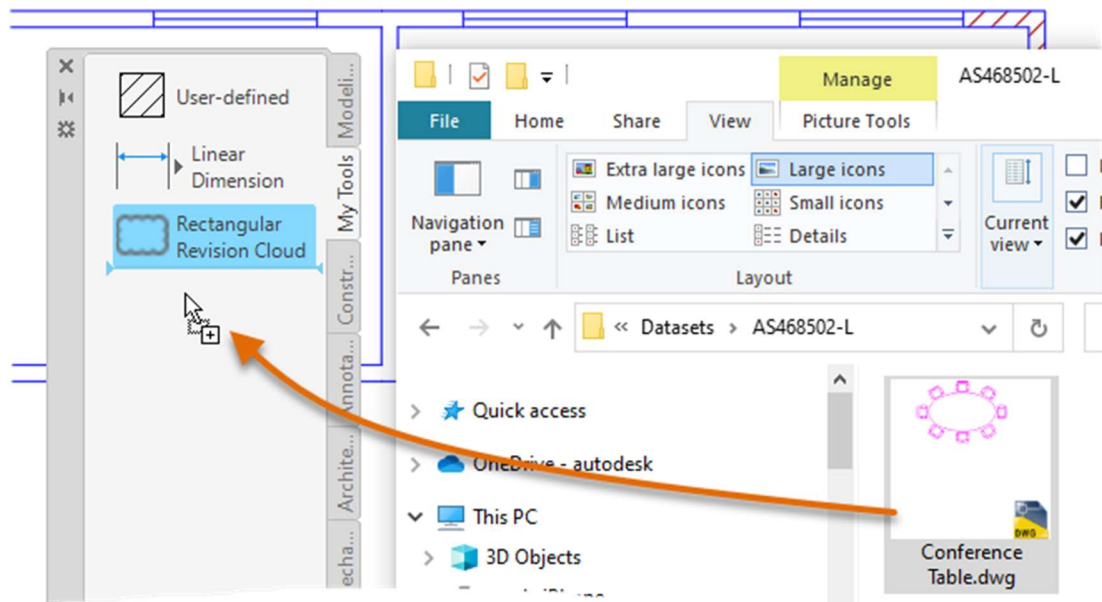
Note: The Command String field in the Tool Properties dialog box contains a copy of the command macro string from the original command defined in the *acad.cuix* file.

The following steps explain how to create tools from drawing files stored outside of AutoCAD:

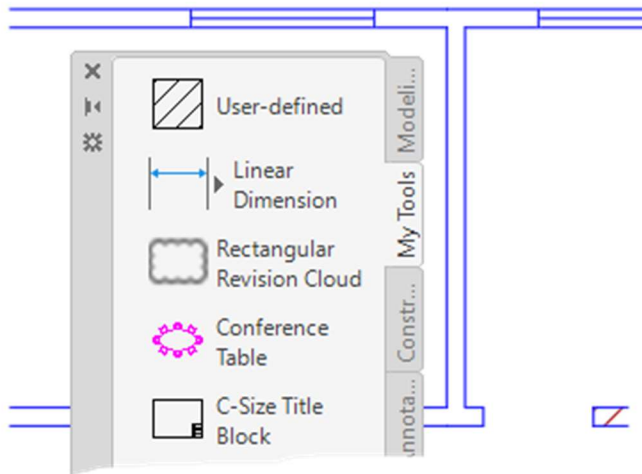
1. Switch to or open Windows Explorer or File Explorer.

Tip: You can open Windows Explorer or File Explorer from inside AutoCAD by entering **explorer** at the Command prompt.

2. In Windows Explorer or File Explorer, navigate to the *C:\Datasets\AS468502-L* folder or the folder in which the dataset for this session is stored.
3. Select the *Conference Table.dwg* file, and then drag and drop the file onto the My Tools palette.



- Repeat the previous step for the *C-Size Title Block.dwg* file.



- In AutoCAD, try each of the tools on the My Tools palette.

Some tools work differently when clicked versus dragged and dropped into the drawing area, such as hatch and block tools.

Tip: Press Spacebar or Enter after using a tool from a tool palette to repeat that tool.

- Create a new drawing and try the tools again.

When the hatch, dimension, or Rectangular Revision Cloud tools are used, the layers in which the tools were assigned are automatically created in the new drawing. This happens because each tool remembers the properties of the layer from which the geometry was originally assigned when the tool was created or last modified.

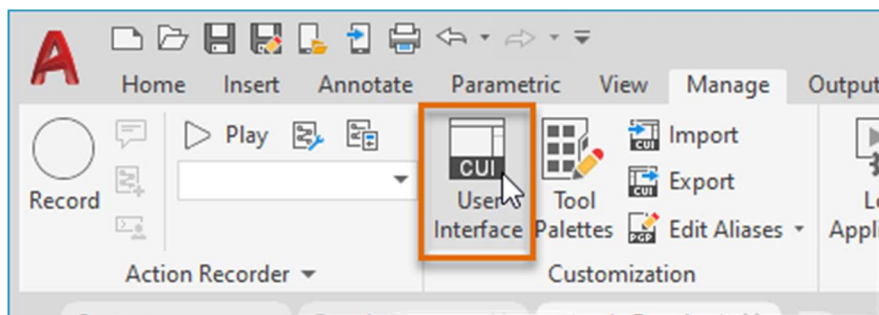
E4 Create a Quick Access Toolbar (QAT) (4-5 mins)

This exercise explains how to create a new Quick Access toolbar (QAT) and assign it to a custom workspace.

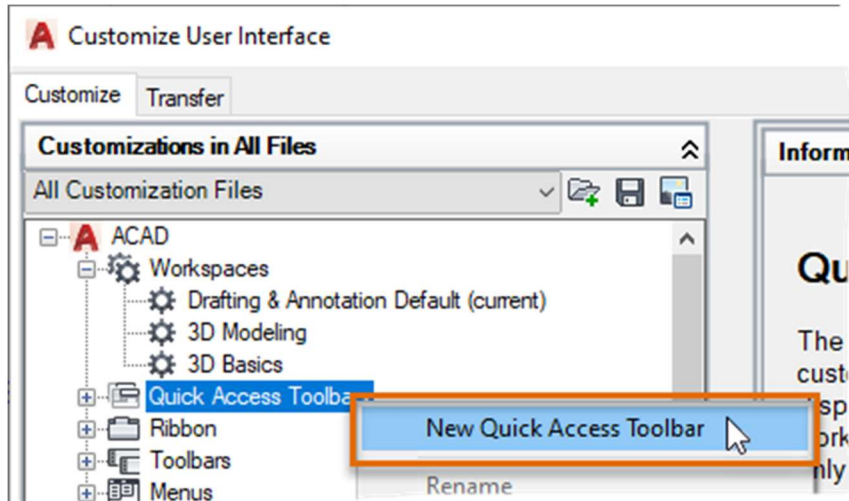
Note: The resulting *acad.cuix* file from this exercise is from AutoCAD 2021 and can be found in the *Completed* folder of the dataset. Also included is a partial CUIx file with the name *au2020.cuix* and it contains the same additions, this file can be loaded into any AutoCAD release. Use the CUILOAD command to load the *au2020.cuix* file.

In these steps, you create a new QAT and modify the commands that are to be displayed:

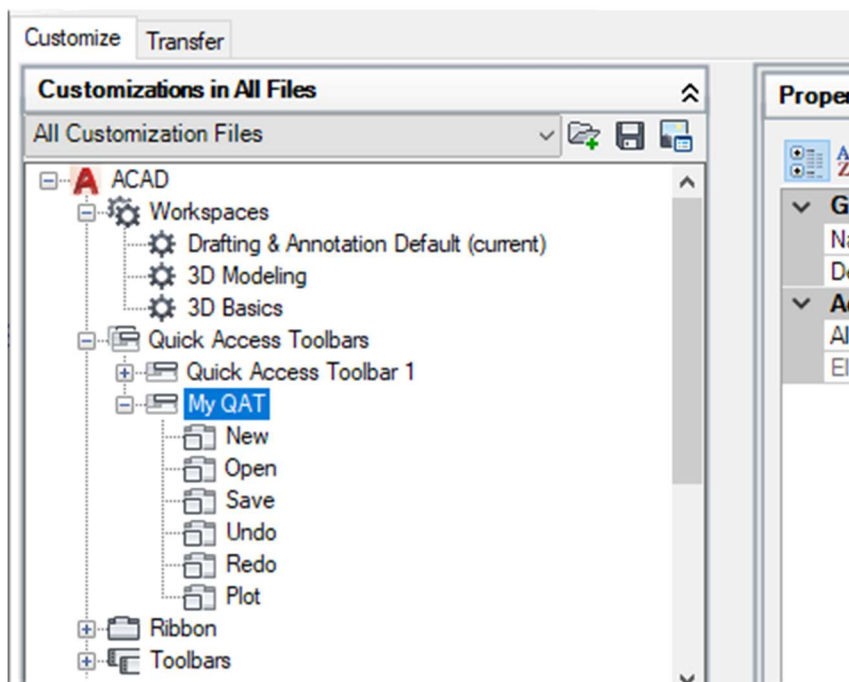
- In AutoCAD, on the ribbon, click Manage tab > Customization panel > User Interface.



2. In the Customize User Interface (CUI) Editor, Customizations In pane, right-click the Quick Access Toolbars node and choose New Quick Access Toolbar.

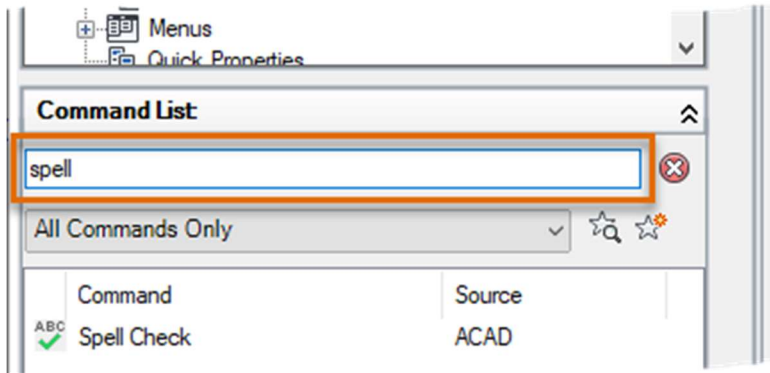


3. Type **My QAT** and press Enter to name the new Quick Access toolbar.
Note: If you can't change the toolbar's name, right-click the new toolbar and choose Rename.
4. Click the plus-sign next to the new Quick Access toolbar to reveal its default set of commands.

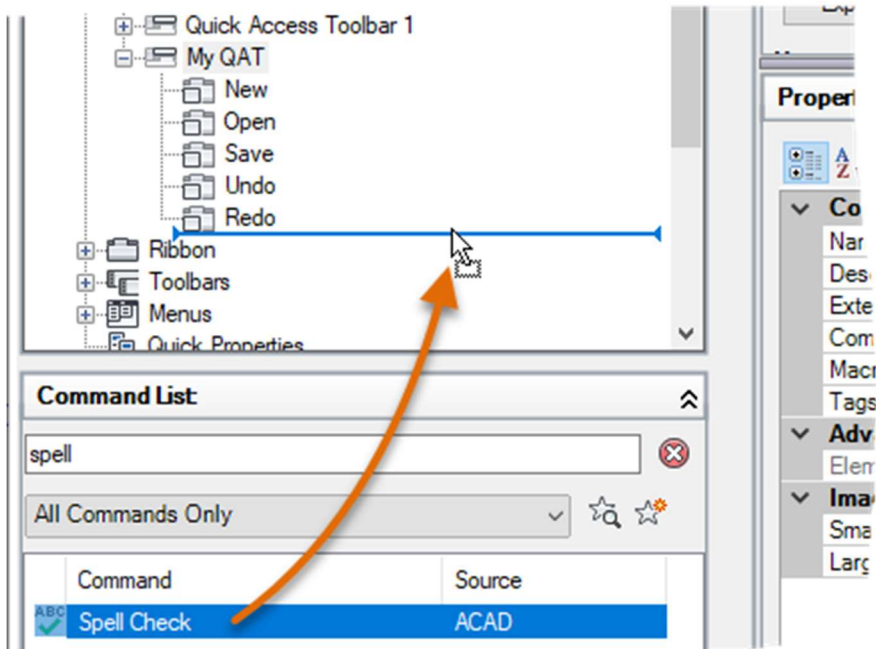


5. Right-click over the Plot command under the My QAT toolbar and choose Remove. In the Confirm dialog box, click Yes to confirm the removal of the element.

6. In the Command List pane, Search Command List text box, type **spell**.

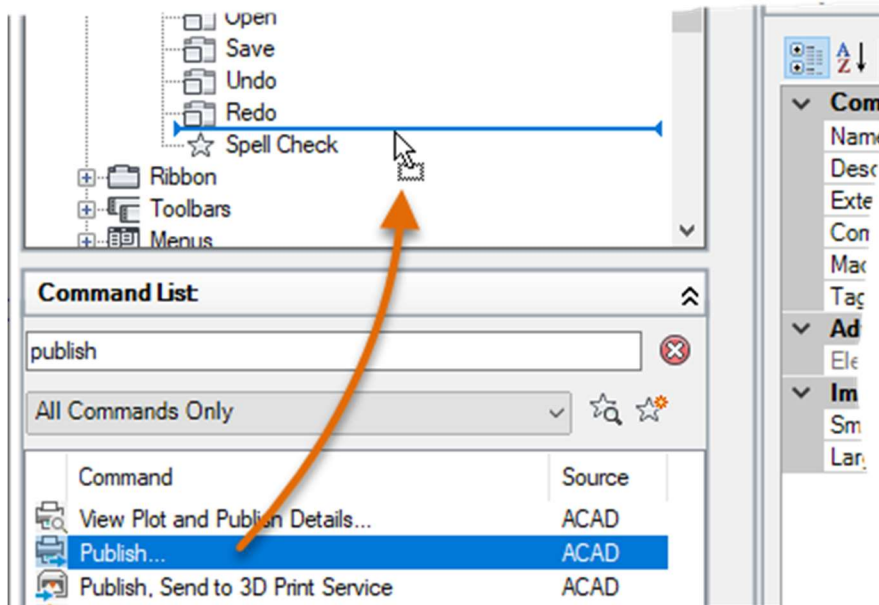


7. Click and drag the Spell Check command from the Command List and drop it onto the My QAT toolbar below the Redo command.

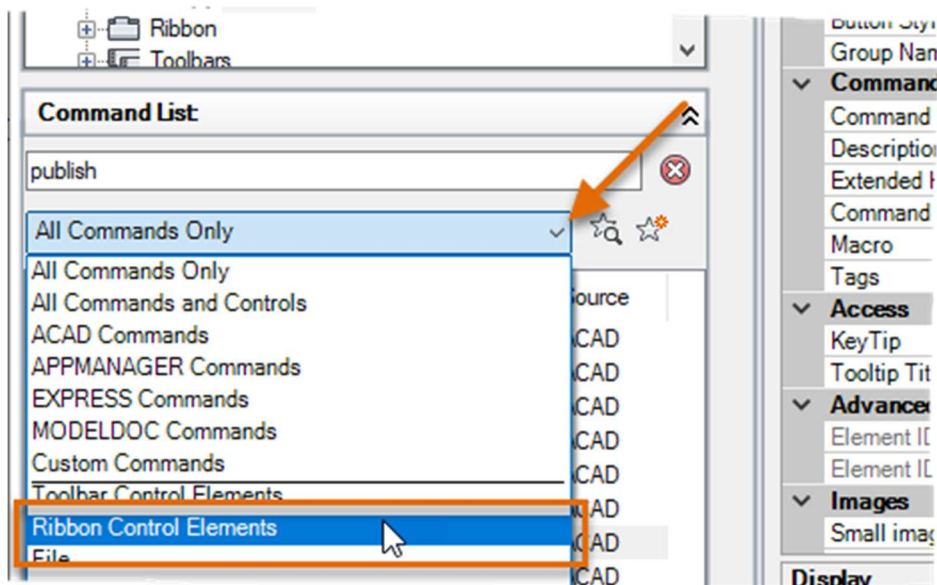


8. In the Search Command List text box, clear the current text and type **publish**.

9. Add the Publish... command above the Spell Check command on the My QAT toolbar.

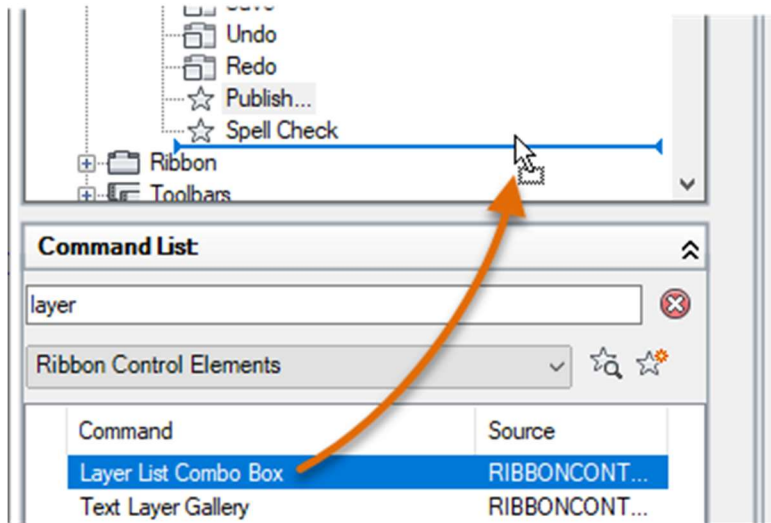


10. Click the Command List by Category drop-down list and choose Ribbon Control Elements.

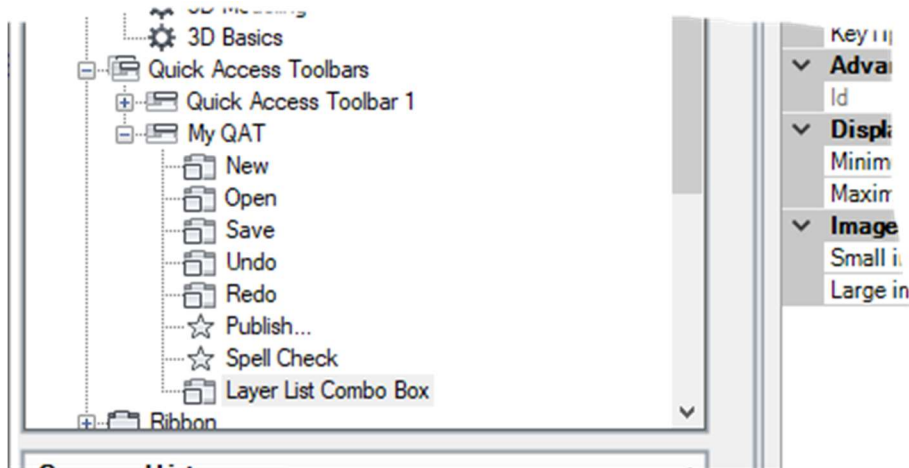


11. In the Search Command List text box, clear the current text and type **layer**.

12. Select the Layer List Combo Box control and add it below the Spell Check command on the My QAT toolbar.



The completed Quick Access toolbar should now look like the following in the CUI Editor:



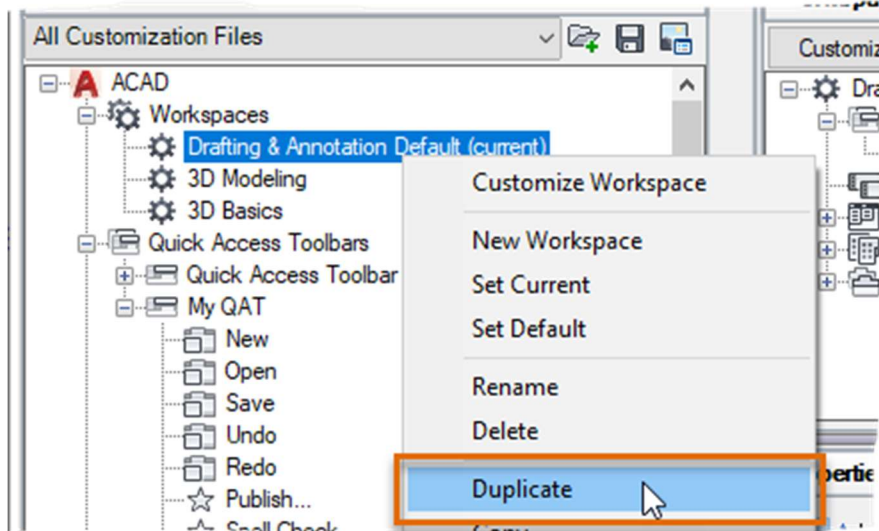
13. Click Apply to save the changes made.

Once the Quick Access toolbar has been created, it must be added to a workspace before it can be displayed in the AutoCAD user interface.

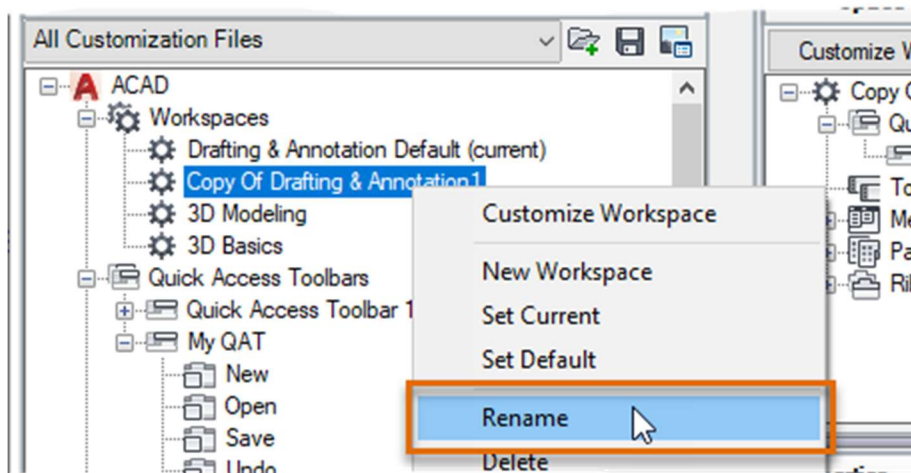
These steps explain how to create a new workspace from an existing workspace and display the My QAT toolbar:

1. In the Customize User Interface (CUI) Editor, Customizations In pane, click the plus-sign next to the Workspaces node to expand it if it isn't already expanded.

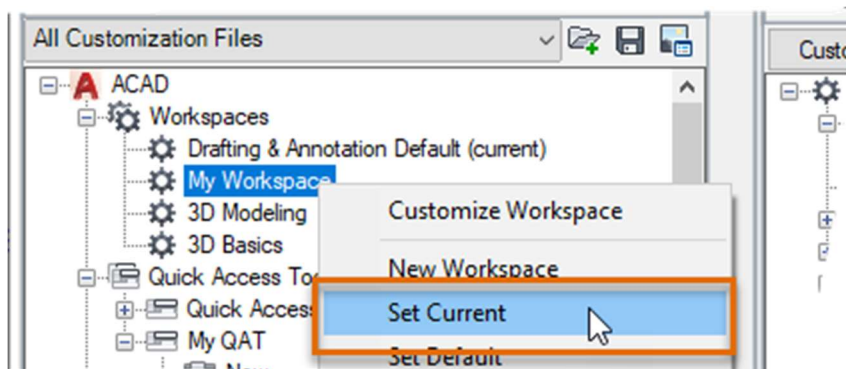
2. Right-click over the Drafting & Annotation workspace and choose Duplicate.



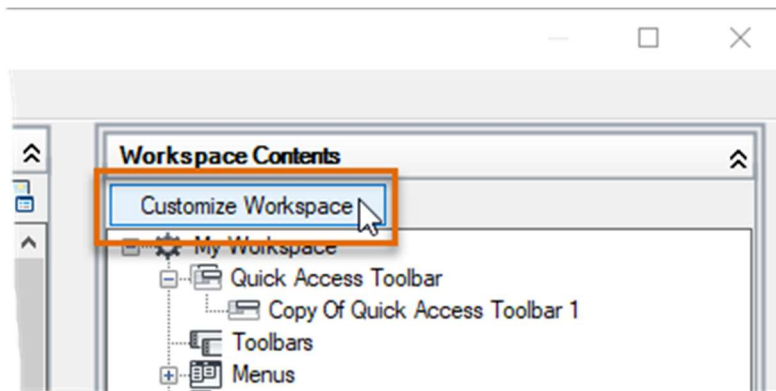
3. Right-click over the new workspace named Copy Of Drafting & Annotation1 and choose Rename. In the in-place editor, type **My Workspace** and press Enter.



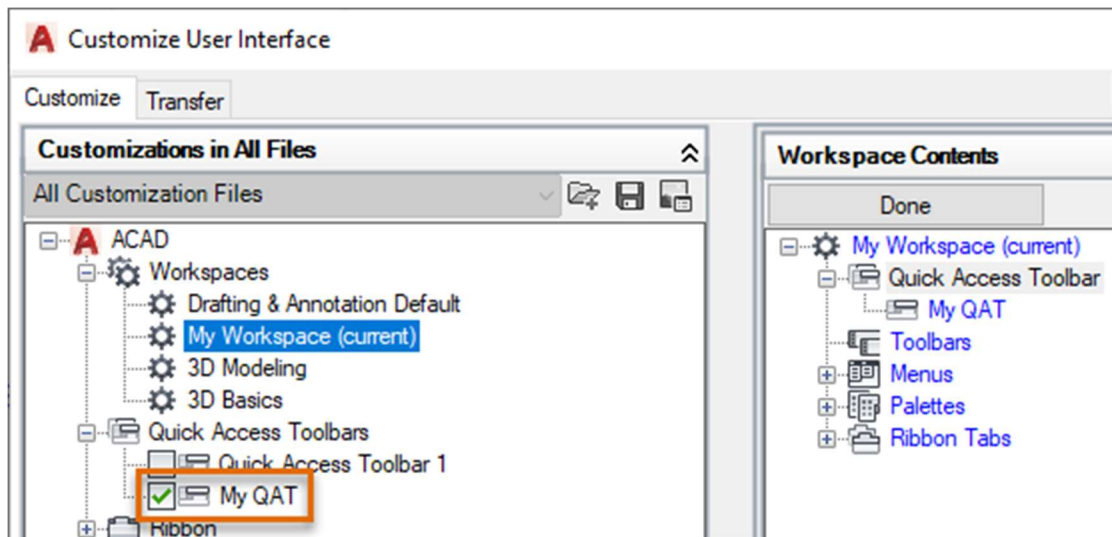
4. Right-click over the new workspace named My Workspace and choose Set Current.



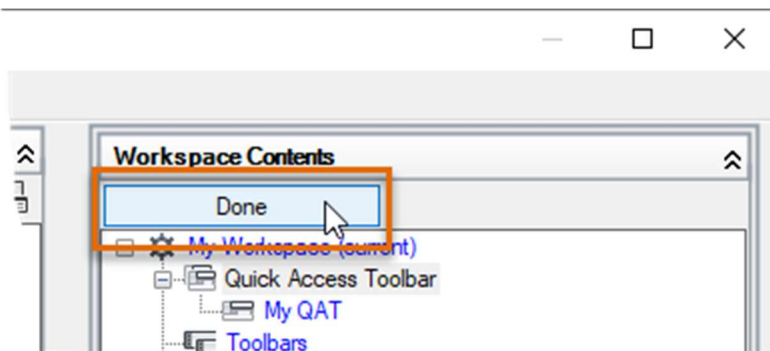
5. In the Workspace Contents pane, click Customize Workspace.



6. In the Customizations In pane, expand the Quick Access Toolbars node and click the checkbox next to My QAT (which should now be checked).



7. In the Workspace Contents pane, click Done.



8. Click OK to save the changes and exit the CUI Editor.

Note: If any message boxes are displayed, click OK to continue loading the changes to the CUIx file.

Once loaded, the new QAT should look similar to the following image.

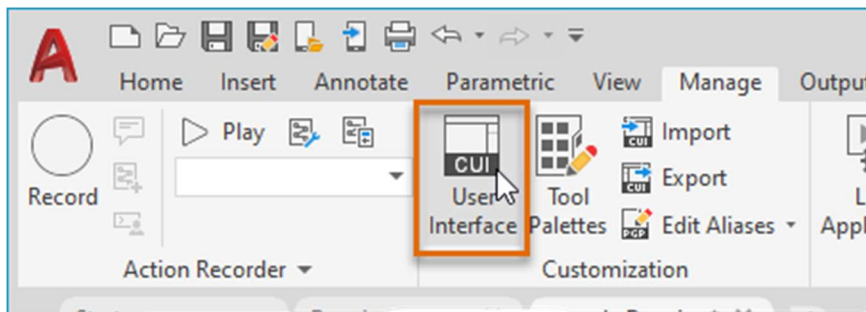


E5 Create a Ribbon Panel and Tab (7-8 mins)

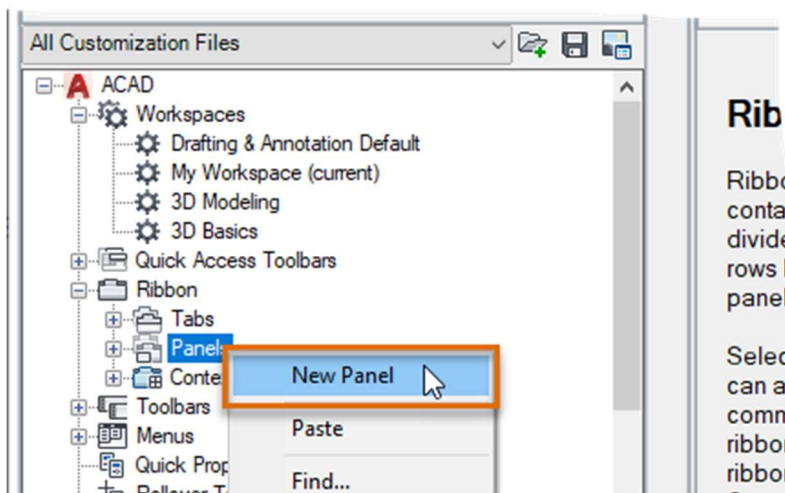
This exercise explains how to create and add commands to a new ribbon panel, create a new ribbon tab to display a ribbon panel, and control the display of a ribbon tab with a workspace.

Note: The resulting *acad.cuix* file from this exercise is from AutoCAD 2021 and can be found in the *Completed* folder of the dataset. Also included is a partial CUIx file with the name *au2020.cuix* and it contains the same additions, this file can be loaded into any AutoCAD release. Use the CUILOAD command to load the *au2020.cuix* file.

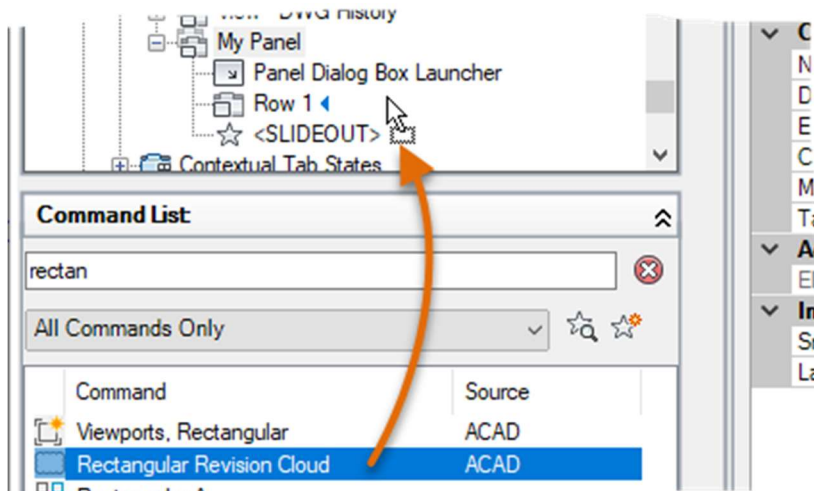
1. In AutoCAD, on the ribbon, click Manage tab > Customization panel > User Interface.



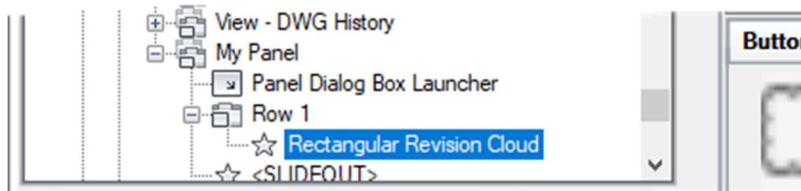
2. In the Customize User Interface (CUI) Editor, Customizations In pane, click the plus-sign next to the Ribbon node to expand it. Right-click the Panels node and choose New Panel.



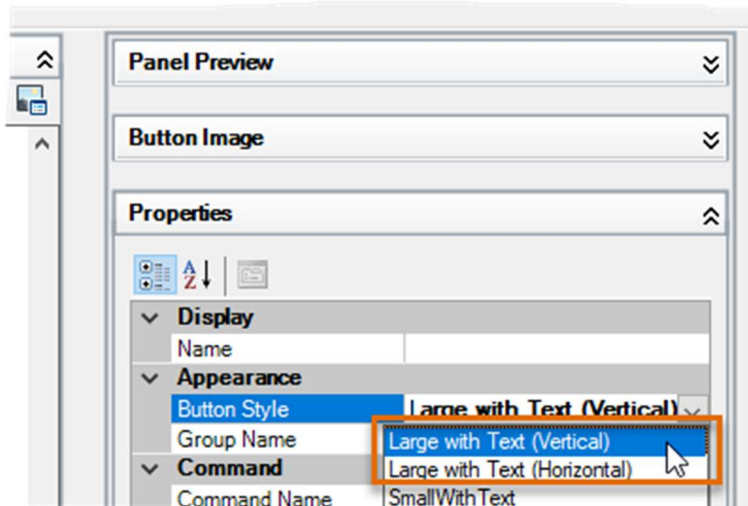
3. In the in-place text editor, type **My Panel** and press Enter.
Note: If you cannot change the panel's name, right-click the new ribbon panel and choose Rename.
4. In the Command List pane, Search Command List text box, type **rectang**.
5. In the Command List pane, select the Rectangular Revision Cloud command and drag it to Row 1 under the My Panel ribbon panel. Release the mouse button to add the command.



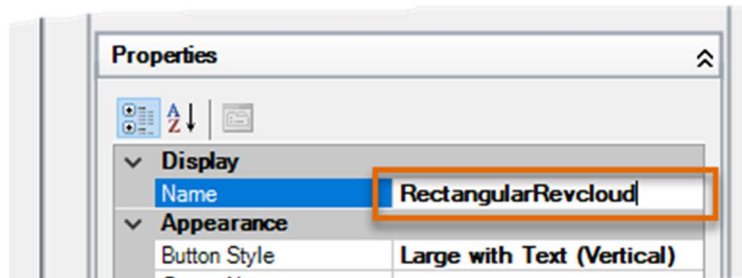
6. Select the Rectangular Revision Cloud command you just added to Row 1 if it isn't already selected.



7. In the Properties pane, on the right, click in the Button Style field and choose Large with Text (Vertical) from the drop-down list.



8. Click in the text box to the right of the Name field, and then type **RectangularRevcloud** and press Enter.

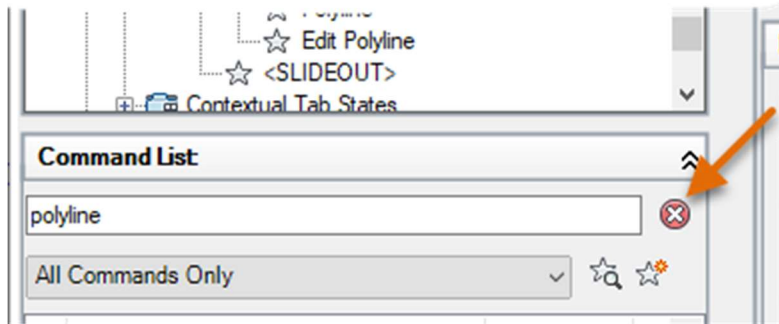


Note: The \n forces the label to be displayed on two lines; the \n disappears once the field loses focus but that is by design.

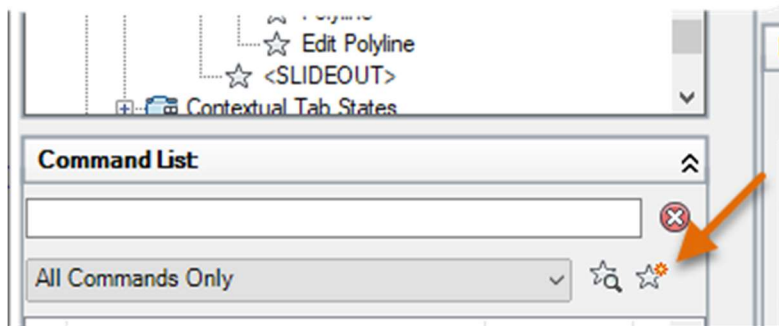
9. Add a few more of your favorite commands from the Command List pane to the My Panel ribbon panel and adjust their names and button styles as desired.
10. Click Apply to save the changes.

The following steps explain how to create a custom command and add it to a ribbon panel:

1. In the Command List pane, click Clear to remove any text in the Search Command List text box.



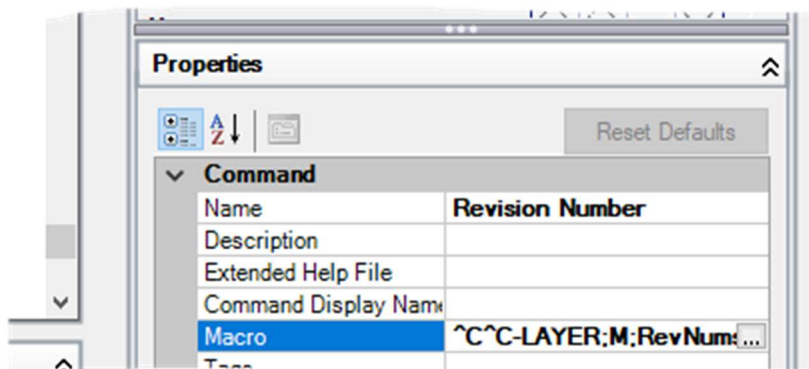
2. Click Create a New Command.



3. In the Properties pane, change the following values:

Name: Revision Number

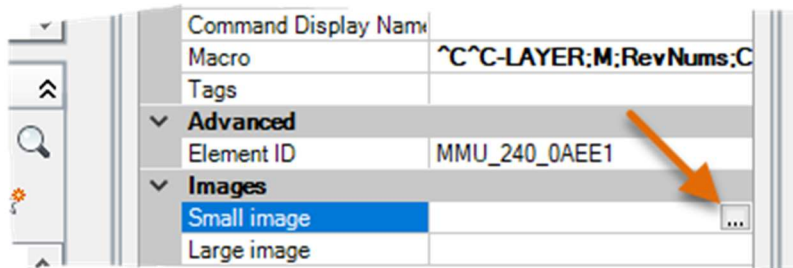
Macro: ^C^C-LAYER;M;RevNums;C;1;;;-INSERT;REVNUM;\1;;0;



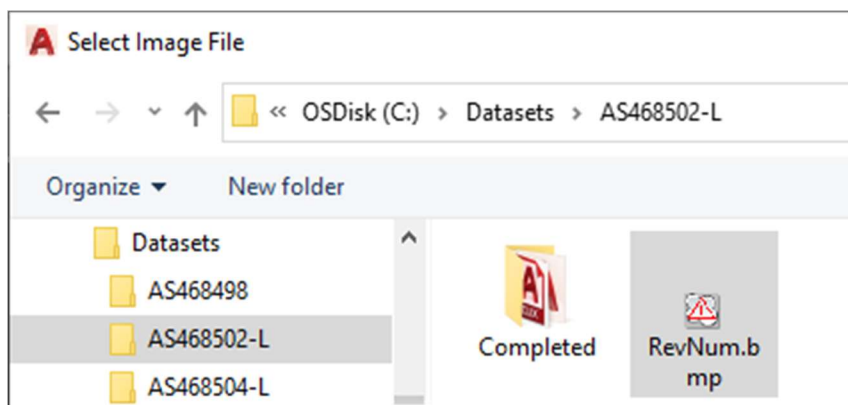
Note: Rather than typing all the text, you can copy and paste the name and macro string from the *EX6 - Create a Ribbon Tab and Panel.txt* file located in the *C:\Datasets\AS468502-L* folder or the folder in which the dataset has been stored.

4. Click Apply to save the changes to the command.

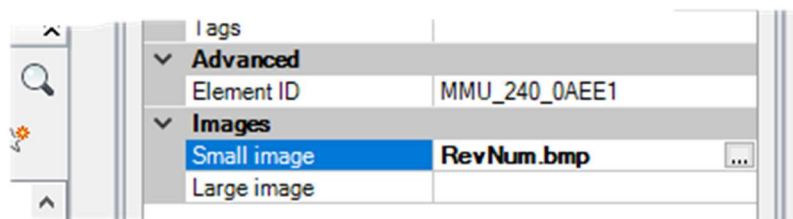
5. In the Properties pane, click the Small Image field and then click the Ellipsis button [...].



6. In the Select Image File dialog box, browse to **C:\Datasets\AS468502-L** and select the **RevNum.bmp** file. Click Open.

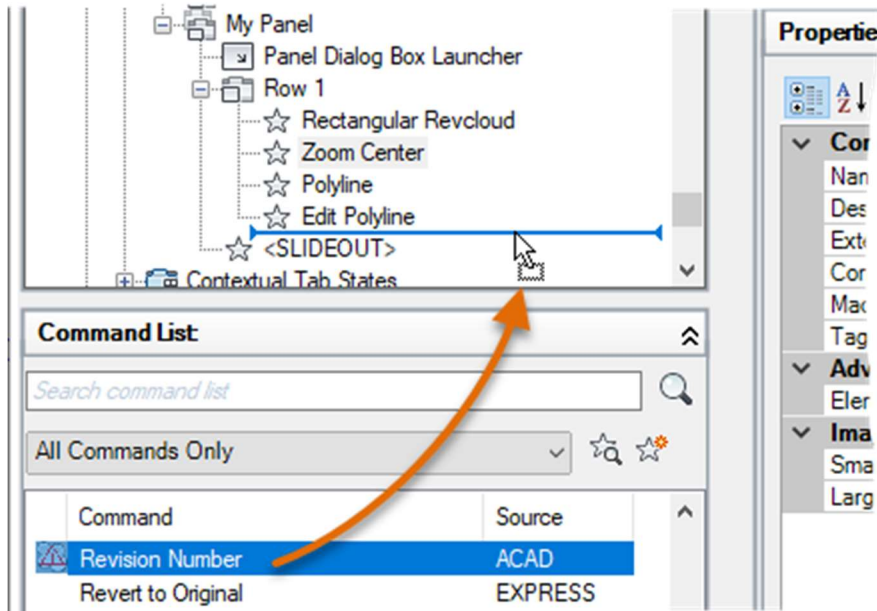


Note: As a reminder, you might need to browse to a different location based on where the dataset files are stored.

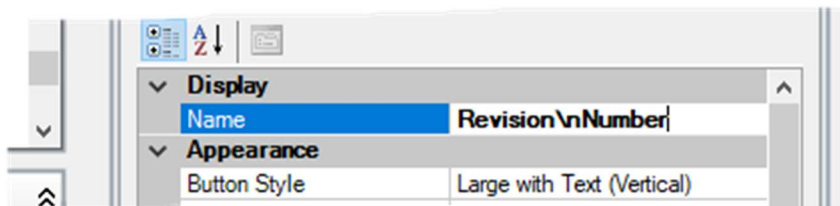


7. Click in the Large Image field and type **RevNum.bmp**.
8. Click Apply to save the current changes.

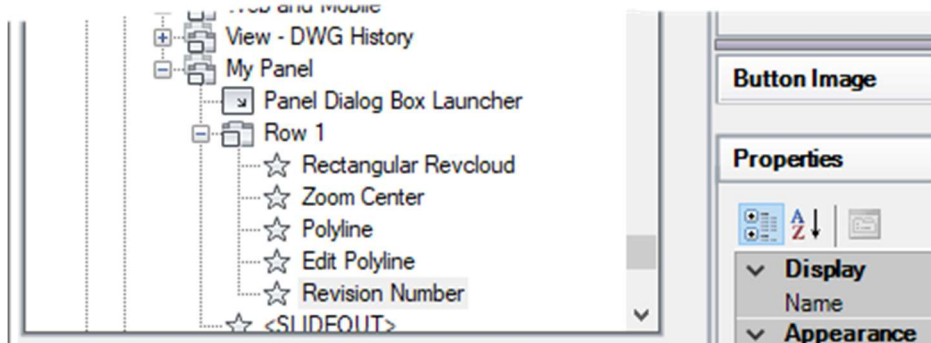
9. In the Command List pane, select the Revision Number command and drag it to Row 1 under the My Panel ribbon panel.



10. Select the Revision Number command you just added to Row 1 of the My Panel ribbon panel and set its Button Style to Large with Text (Vertical) in the Properties pane.
11. Click in the text box to the right of the Name field, then type **Revision\nNumber** and press Enter.



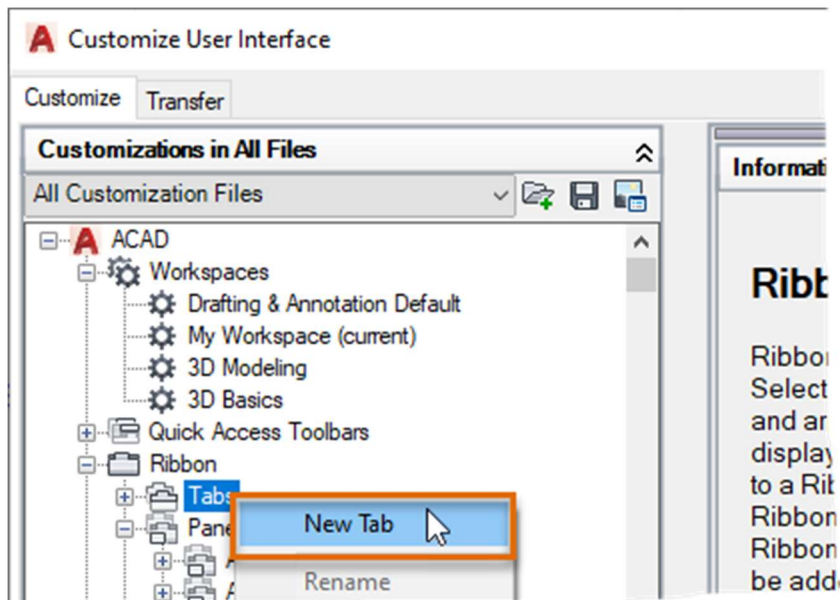
12. Click Apply to save the changes.



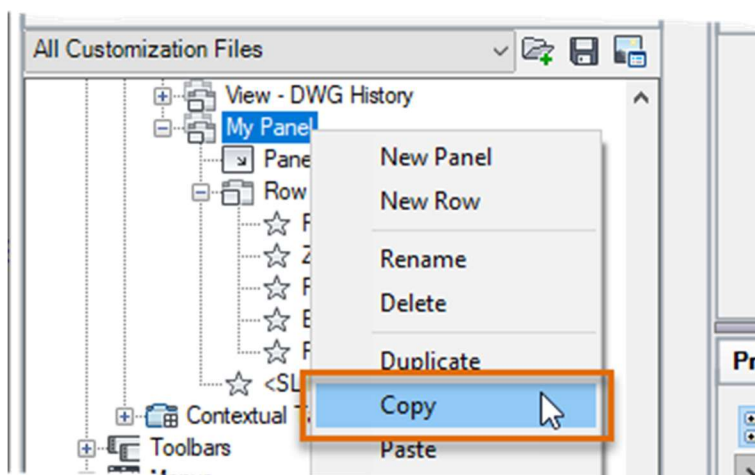
The ribbon panel should include the Rectangular Revision Cloud and Revision Number commands along with any additional commands that you added.

The following explains how to create and customize a ribbon tab:

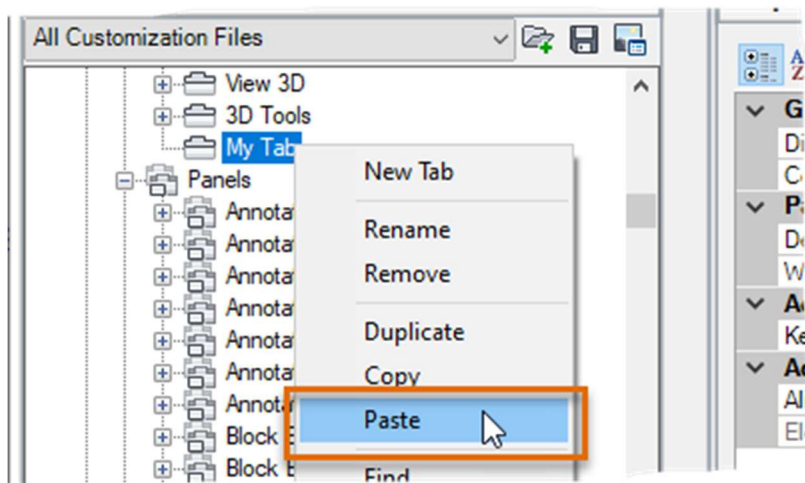
1. In the Customize User Interface (CUI) Editor, Customizations In pane, click the plus-sign next to the Ribbon node to expand it if it isn't already expanded. Right-click the Tabs node and choose New Tab.



2. In the in-place text editor, type **My Tab** and press Enter.
Note: If you cannot change the tab's name, right-click the new ribbon tab and choose Rename.
3. Expand the Panels node under the Ribbon node if it isn't already expanded.
4. Under the Panels node, right-click over the My Panel node and choose Copy.

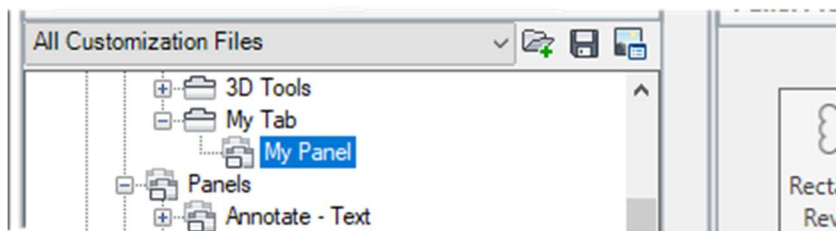


- Under the Tabs node, right-click over the My Tab node and choose Paste.



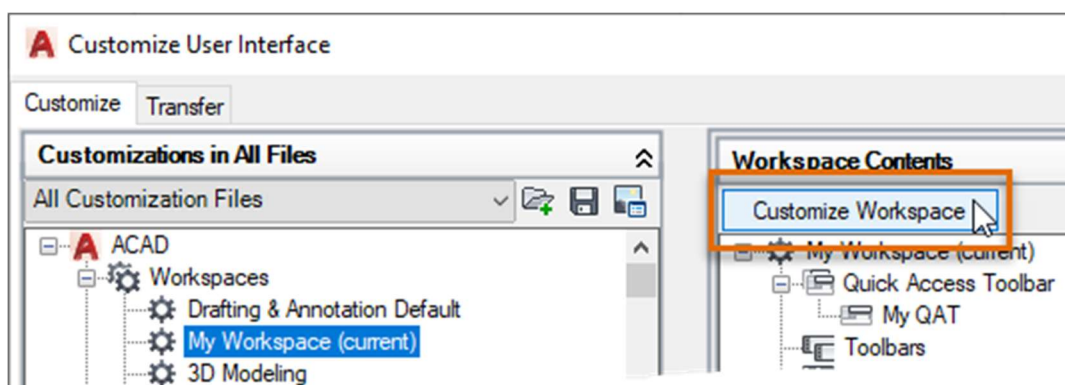
A reference of the My Panel ribbon panel is added to the My Tab ribbon tab.

- Click Apply to save the changes.

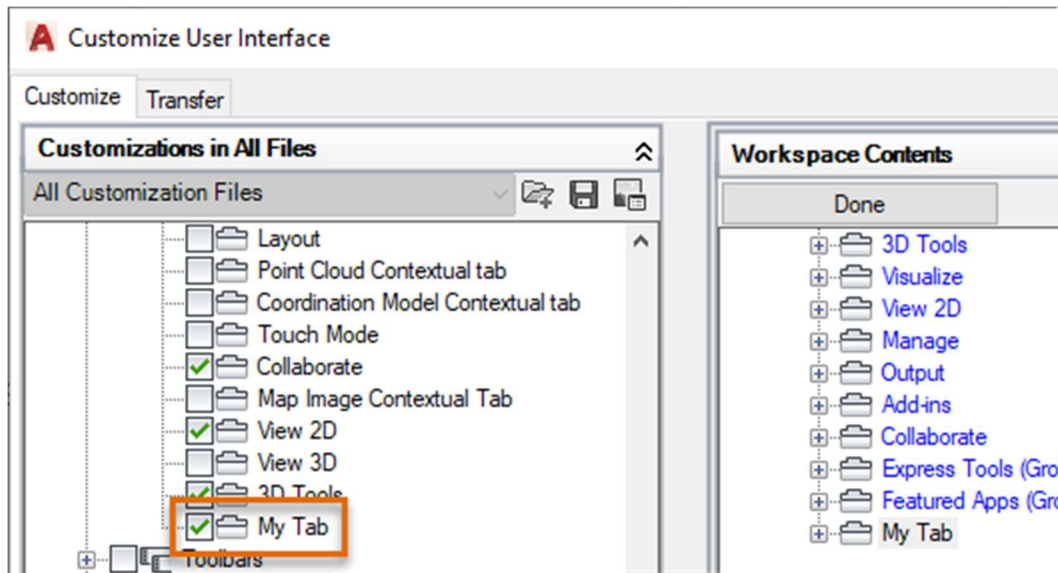


The following explains how to add the My Tab ribbon tab to the current workspace:

- In the Customize User Interface (CUI) Editor, Customizations In pane, click the plus-sign next to the Workspaces node to expand it if it isn't already expanded.
- Select the **My Workspace (current)** workspace and click Customize Workspace.

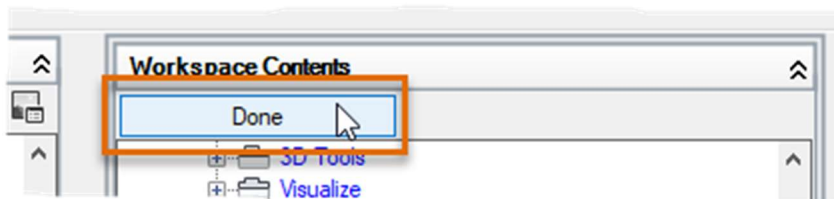


3. In the Customizations In pane, expand the Ribbon > Tabs node and click the checkbox next to My Tab.



My Tab should now be checked and added to the Ribbon Tabs node in the Workspace Contents pane.

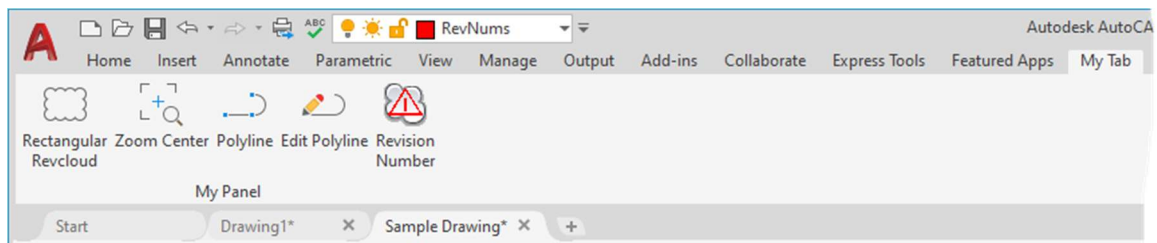
4. In the Workspace Contents pane, click Done.



5. Click OK to save the changes and exit the CUI Editor.

Note: If any message boxes are displayed, click OK to continue loading the changes to the CUIx file.

6. On the ribbon, click My Tab to see the panel named My Panel and its commands.

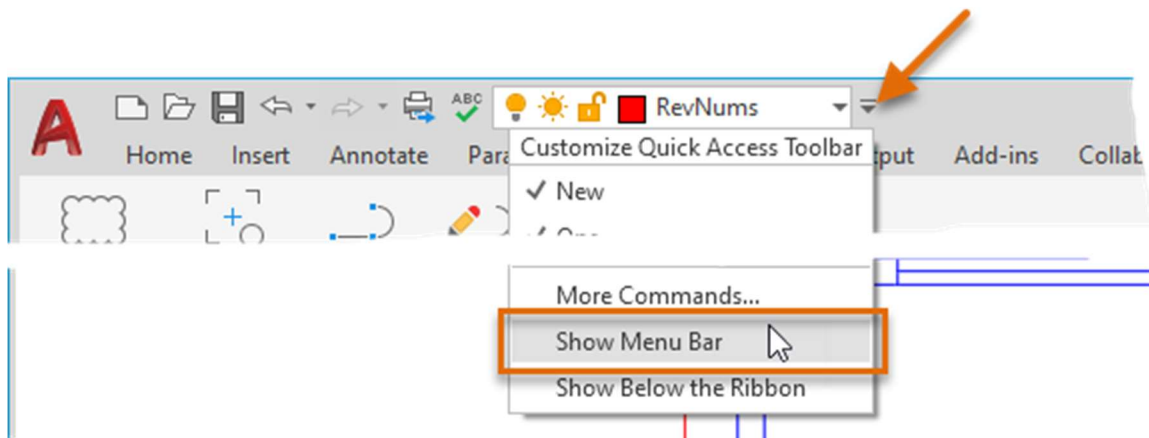


E6 Modify a Workspace (3-4 mins)

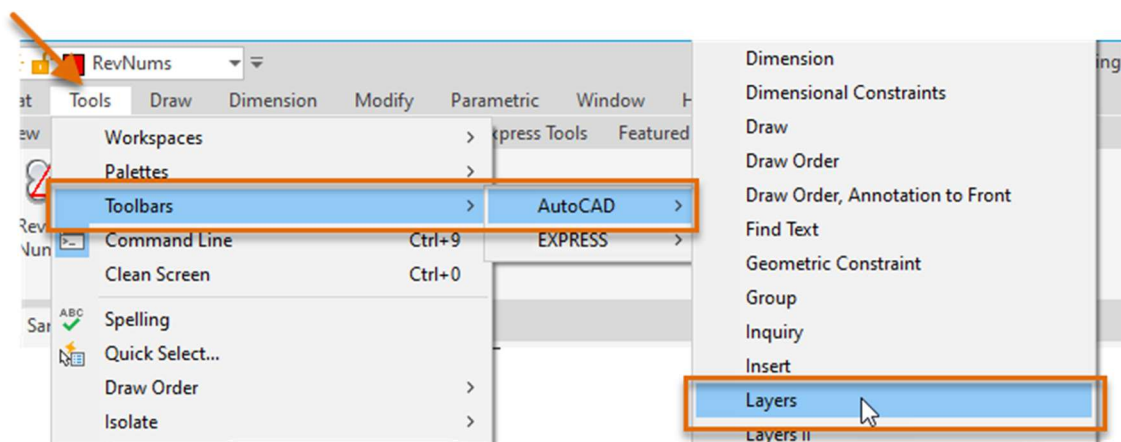
This exercise explains how to modify a workspace directly in the user interface and save the changes to the current workspace.

Note: The resulting *acad.cuix* file from this exercise is from AutoCAD 2021 and can be found in the *Completed* folder of the dataset. Also included is a partial CUIx file with the name *au2020.cuix* and it contains the same additions, this file can be loaded into any AutoCAD release. Use the CUILOAD command to load the *au2020.cuix* file.

1. On the Quick Access toolbar, click the Customize button and choose Show Menu Bar.

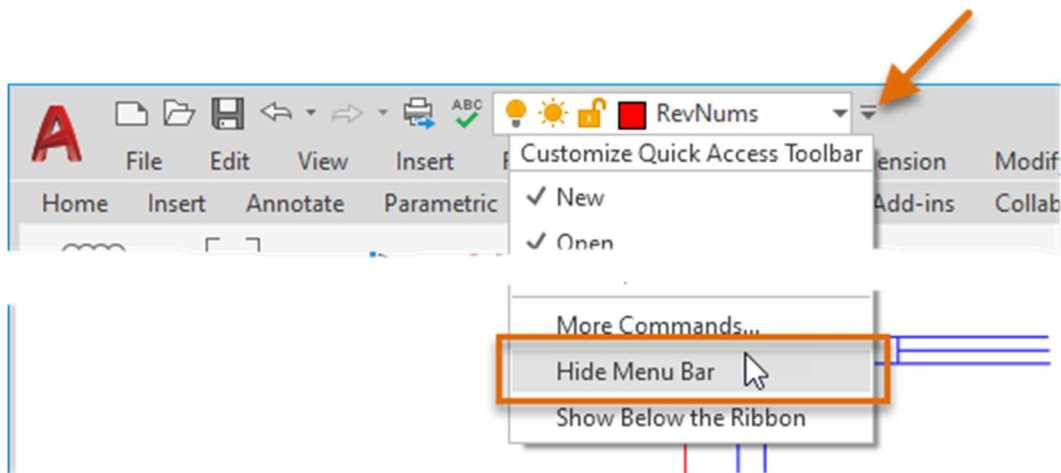


2. On the menu bar, click Tools > Toolbars > AutoCAD > Layers.

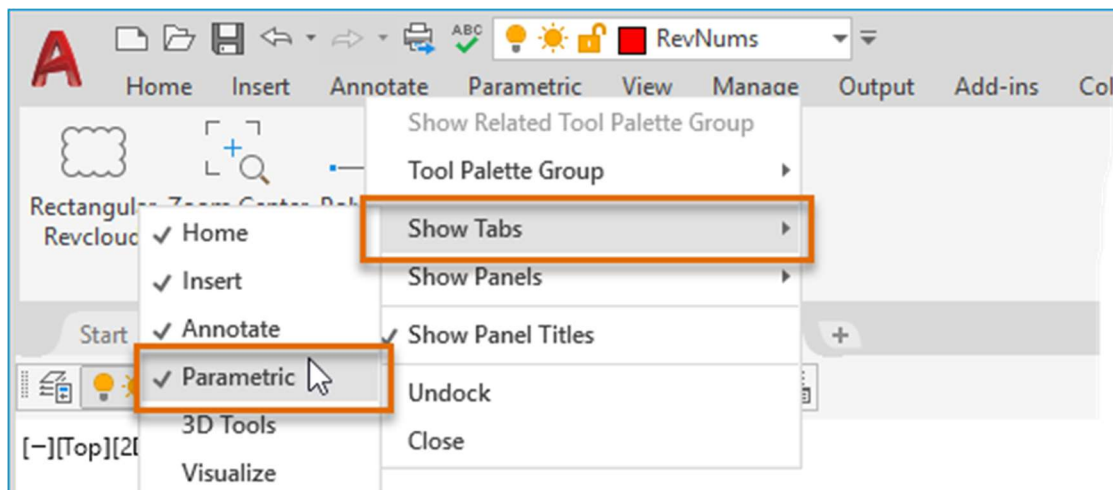


The Layers toolbar should now be displayed.

- On the Quick Access toolbar, click the Customize button and choose Hide Menu Bar.



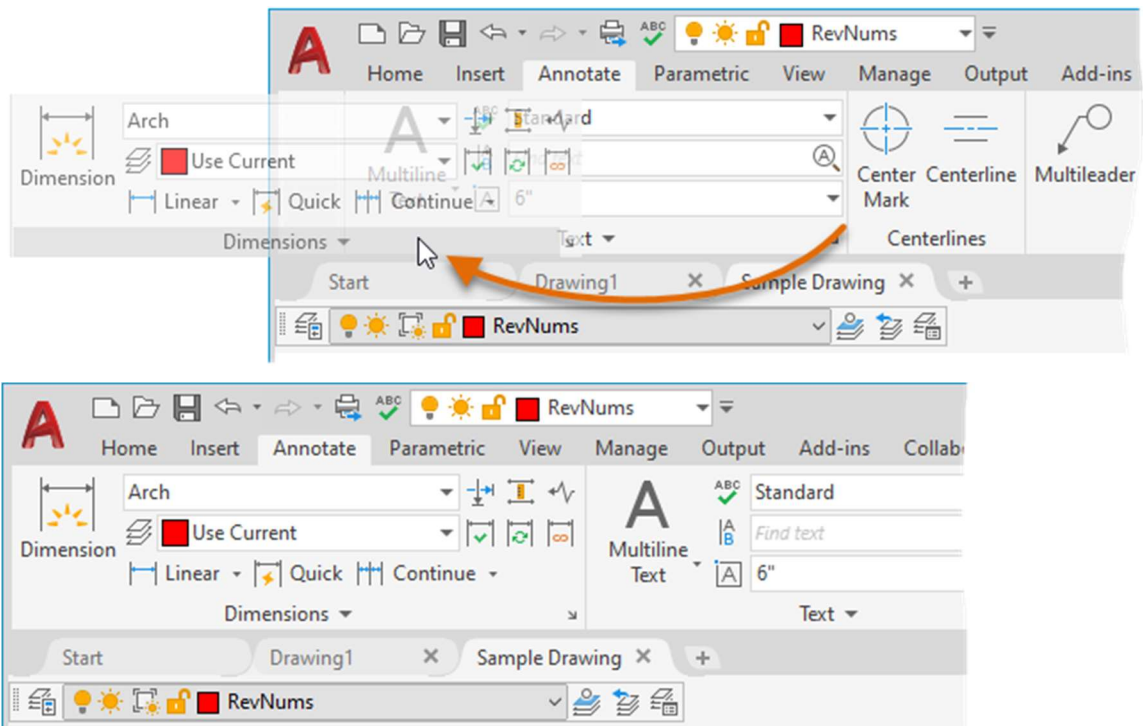
- On the ribbon, right-click over a ribbon tab and choose Show Tabs > Parametric to hide the Parametric ribbon tab.



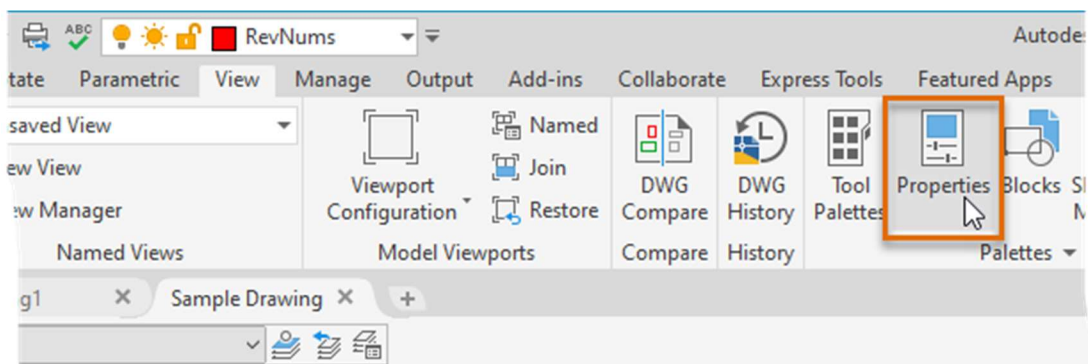
The Parametric ribbon tab should now be hidden.

- On the ribbon, click the Annotate tab to set it current.

6. Click and hold the left mouse button over an empty area of the Dimensions panel and drag it to the left of the Text panel. Release the mouse button to reposition the Dimensions panel.

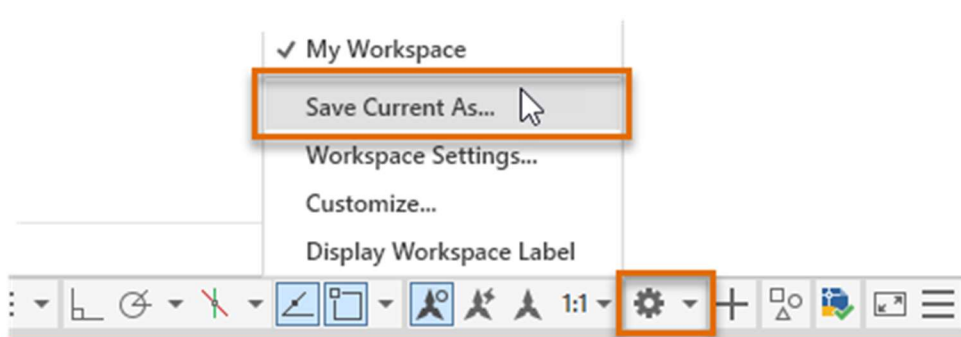


7. On the ribbon, click View tab > Palettes panel > Properties.

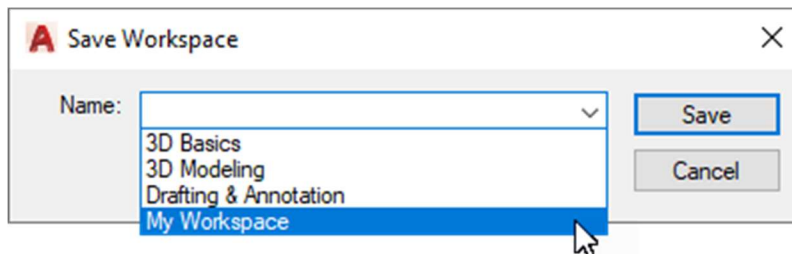


The Properties palette should now be displayed.

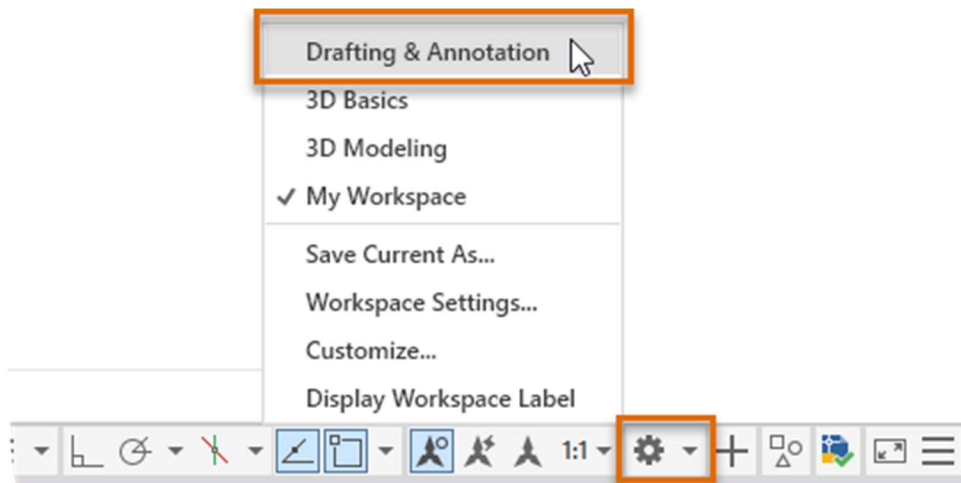
8. On the status bar, click Workspace Switching > Save Current As.



9. In the Save Workspace dialog box, click the drop-down list and choose My Workspace.



10. Click Save. When prompted to replace the workspace, click Replace.
11. On the status bar, click Workspace Switching > Drafting & Annotation.



Your custom QAT and ribbon tab should no longer be displayed along with the Layers toolbar and Properties palette. The Parametric tab should be displayed on the ribbon once again.


12. On the status bar, click Workspace Switching > My Workspace.

Your custom QAT and ribbon tab should be restored along with the Layers toolbar and Properties palette.

E Bonus Create a Desktop Shortcut (3-4 mins)

This exercise explains how to create a custom desktop shortcut to launch AutoCAD, create the default drawing based on a specific drawing template file, and set the '3D Basic' workspace current.

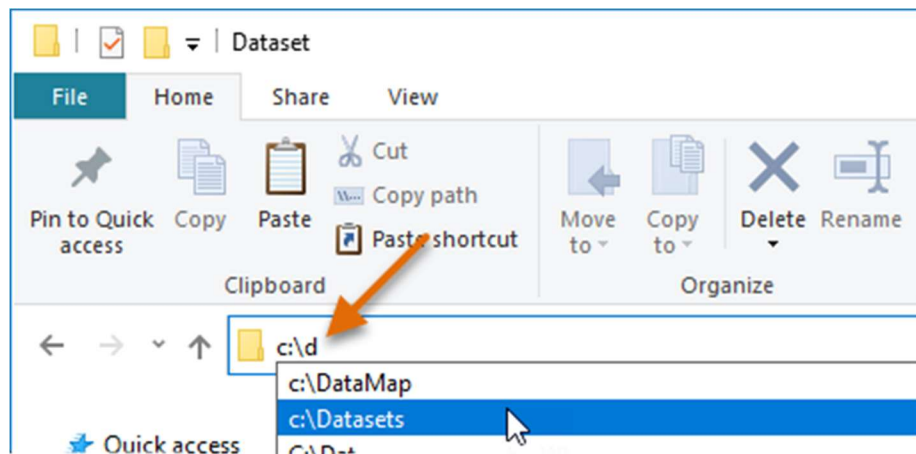
1. Open Windows Explorer or File Explorer.

Tip: If you have a keyboard with a Windows key, press  +E to launch Windows Explorer or File Explorer.

Windows Explorer or File Explorer can also be started from Windows by doing one of the following:

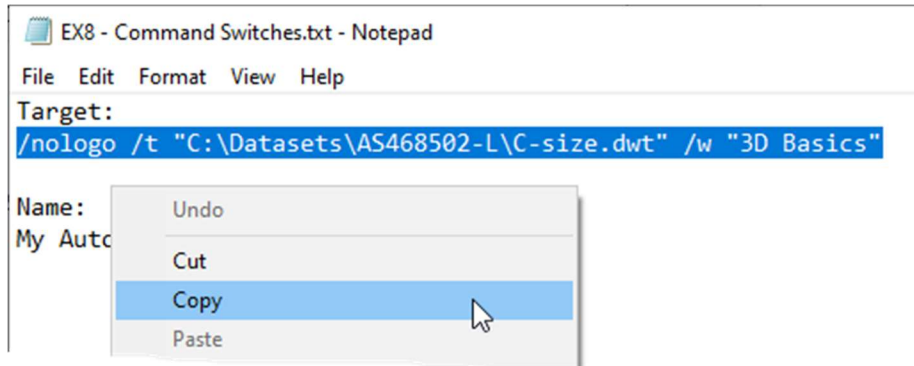
- On the Windows 8 or Windows 10 Start Screen, type **explorer**. In the Search charm, click File Explorer. You can also right-click in the lower-left corner of the screen and choose File Explorer.
- On the Windows 7 taskbar, click the Start Menu button > All Programs > Accessories > Windows Explorer.

2. In Windows Explorer or File Explorer, in the Address Bar, type **c:\d** and select the **C:\Datasets** entry in the list.




3. Navigate to the dataset folder specific for this session which should be at **C:\Datasets\AS468502-L**
4. In the **AS468502-L** folder, double-click the **EX Bonus - Command Switches.txt** file to open it in Notepad.

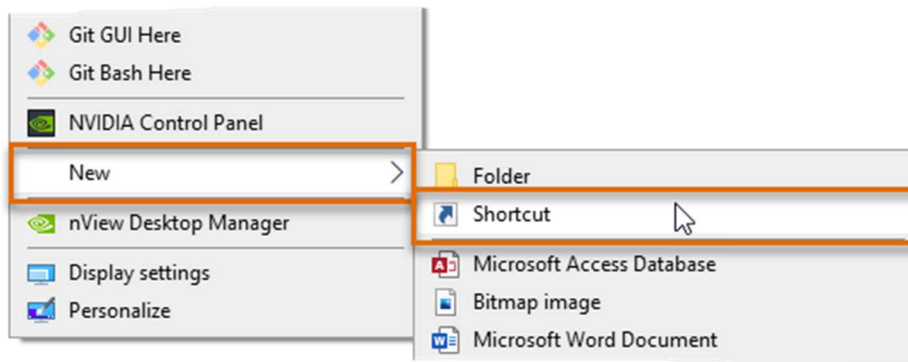
5. In Notepad, select the text under Target as shown in the following image. Right-click over the selected text and choose Copy.



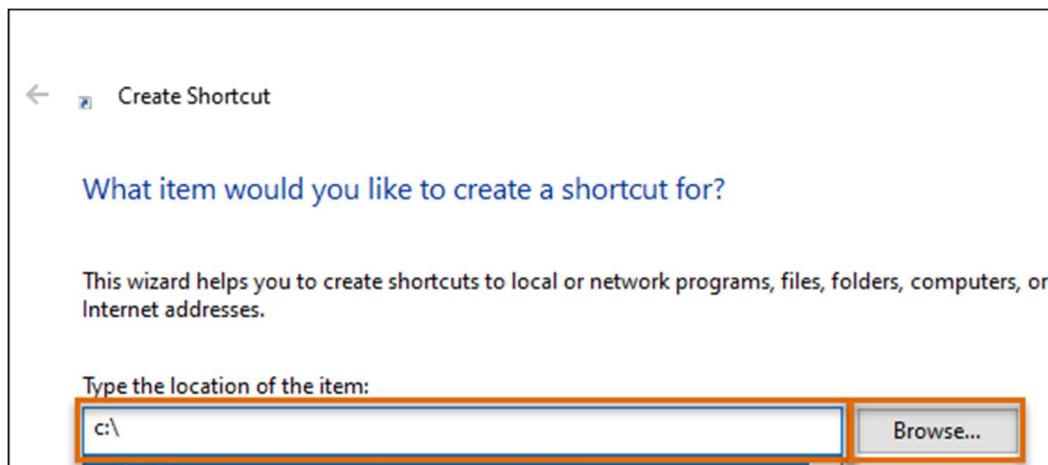
6. Minimize all open applications until you can see the Windows Desktop.

Tip: If you have a keyboard with a Windows key, press  +M to minimize all open Windows.

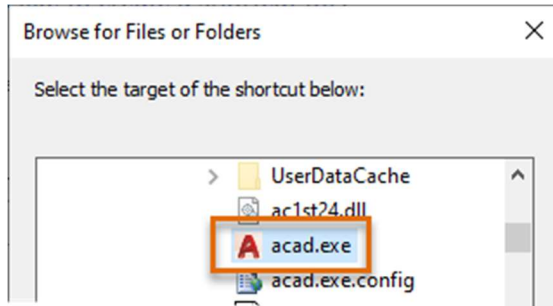
7. Right-click in an empty area of the desktop and choose New > Shortcut.



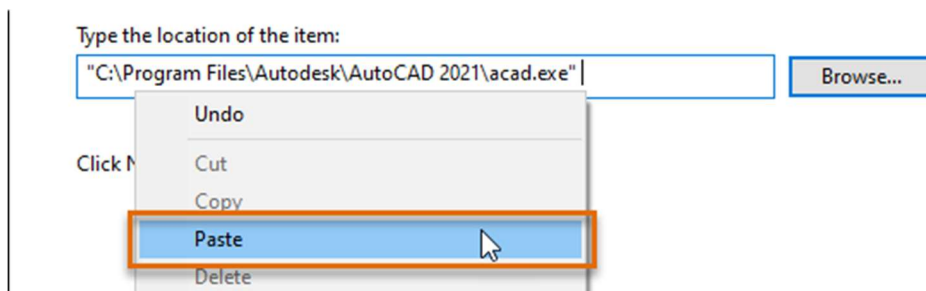
8. In the Create Shortcut dialog box, in the Type the Location of the Item text box, type **C:** and then click Browse.



9. In the Browse for Files or Folders dialog box, navigate to *C:\Program Files\Autodesk\AutoCAD 2021* (or the release installed) and select **acad.exe**. Click OK.



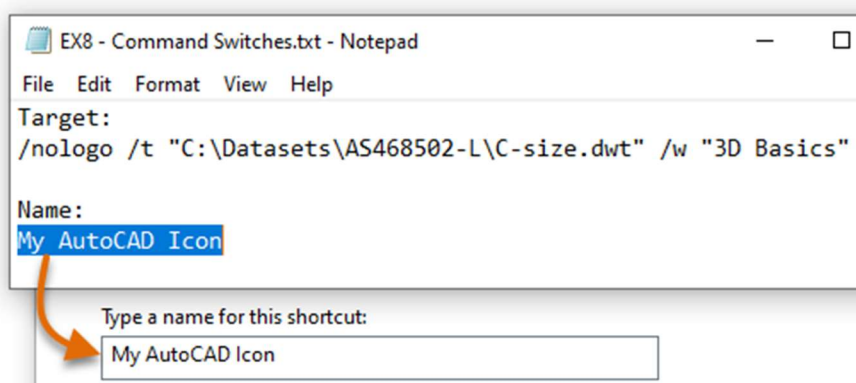
10. In the Create Shortcut dialog box, click in the Type the Location of the Item text box and press the End key followed by pressing the Spacebar once.
11. Right-click in the Type the Location of the Item text box and choose Paste.



Note: If the dataset was placed in a different location, update the text *C:\Datasets\AS468502-L* to match the location of the dataset for this session.



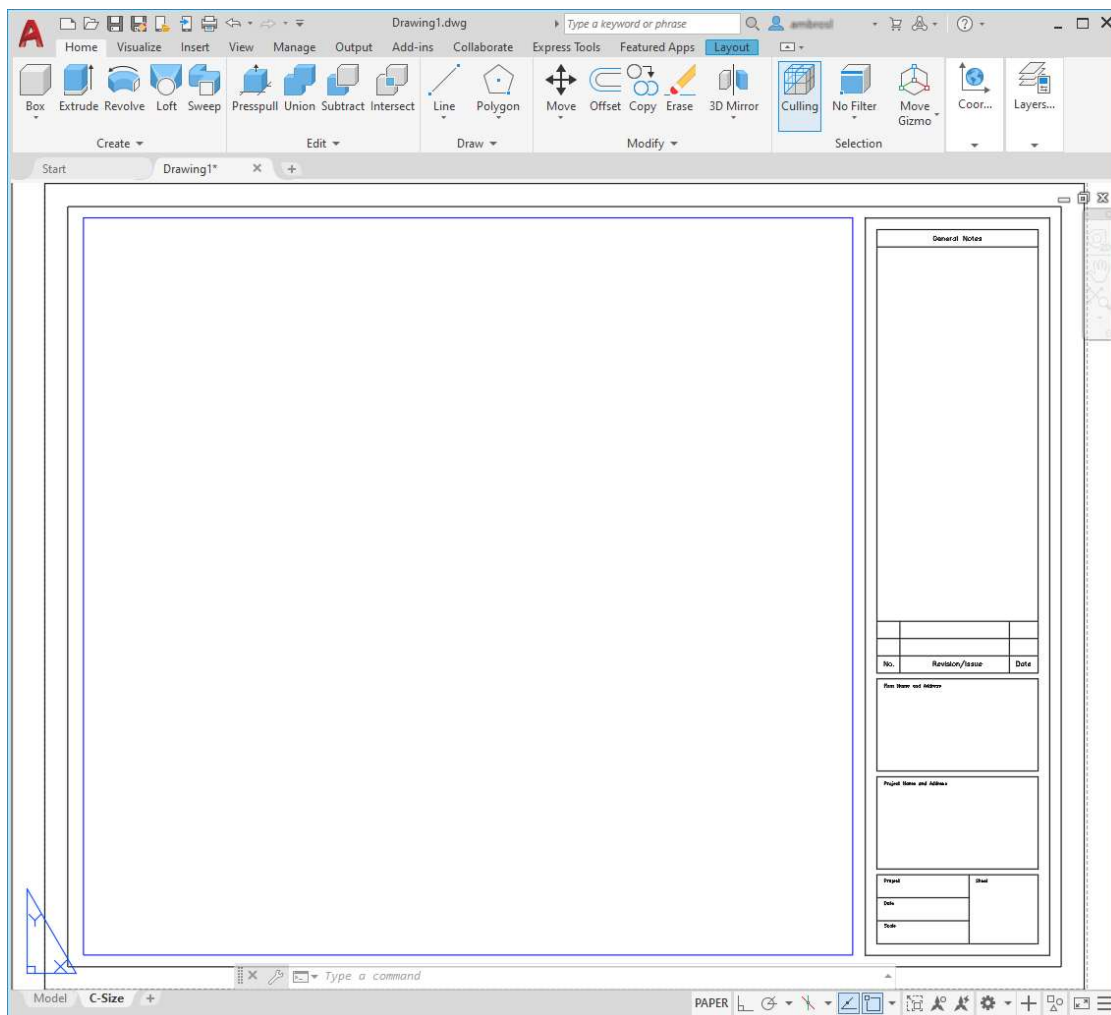
12. Click Next.
13. In Notepad, copy the text under Name and replace the text in the Type a Name for this Shortcut text box of the Create Shortcut dialog box with the copied text.



14. Click Finish to create the new shortcut.
15. If a message box is displayed informing you that the shortcut already exists, click Yes.
Normally, you would click No to avoid losing the existing customized shortcut.
16. Double-click the My AutoCAD Icon shortcut to test it.

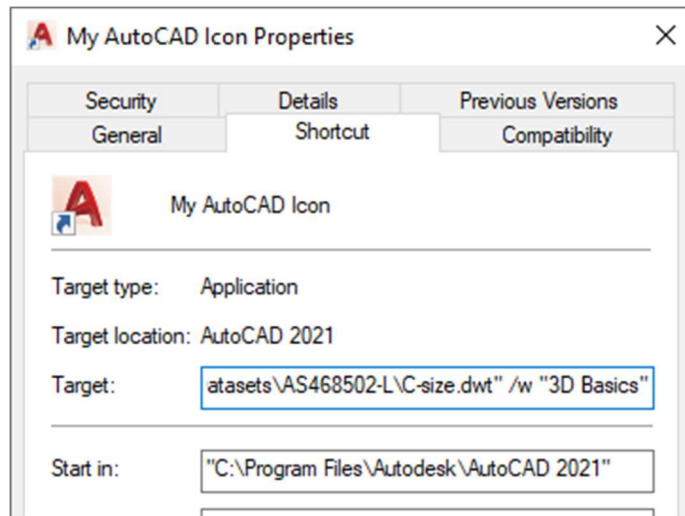


When the AutoCAD program starts, you should notice that no splash screen is displayed, the default drawing created is based on the *C-size.dwt* drawing template file, and the 3D Basic workspace is set current.



Note: If the drawing template file isn't found, no default drawing will be created or the one created won't be based on the *C-size.dwt* drawing template file.

After a shortcut has been created, it can be modified by right-clicking over it and choosing Properties. When the Properties dialog box is displayed, you can modify the application and command line switches previously added in the Target text box of the Create Shortcut dialog box.



Restore the AutoCAD Environment (<3 min)

Typically, you would be working on a lab computer on-site during AU but since you most likely are using your AutoCAD environment at work that might already be customized, care should be taken on backing out any changes you don't want to leave behind. The following steps explain how to back out the various changes that you might have made during this handout.

In these steps, you remove the My Profile and remove the support path for this data set from the default user profile:

1. In AutoCAD, display the Options dialog box (OPTIONS command).
2. In the Options dialog box, Files tab, expand the Support File Search Path node.
3. Select the C:\Datasets\AS468502-L path and click Remove.
4. Click OK to save the changes to the Options dialog box.

In these steps, you remove the command aliases added to the *acad.pgp* file:

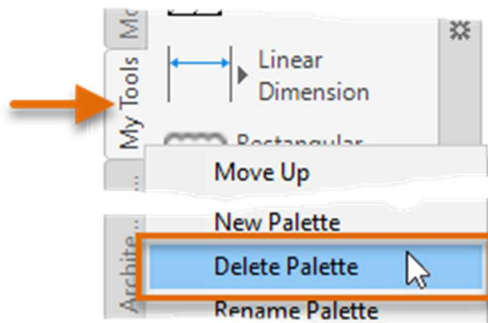
1. In AutoCAD, on the ribbon, click Manage tab > Customization panel > Edit Aliases drop-down menu > Edit Aliases.
2. In Notepad, text editor area, scroll to the bottom of the file.
3. Remove the following lines below the line that starts with ; *****:

```
RV, *REVCLLOUD
C, *COPY
CC, *CIRCLE
```

4. In Notepad, click File menu > Save.

In these steps, you remove the My Tools tool palette created:

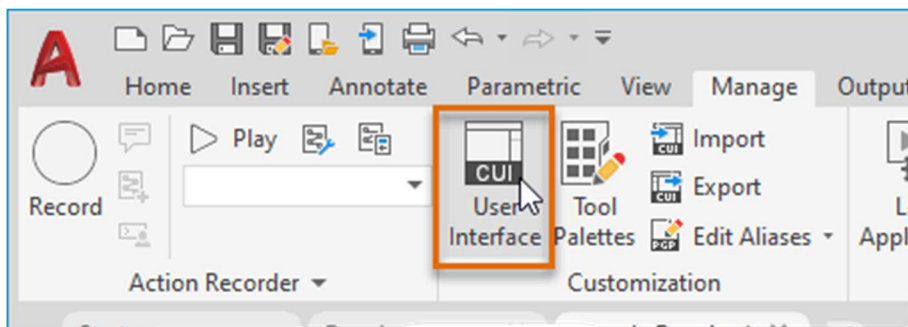
1. In AutoCAD, on the ribbon, click View tab > Palettes panel > Tool Palettes to display the Tool Palettes window if it isn't already displayed.



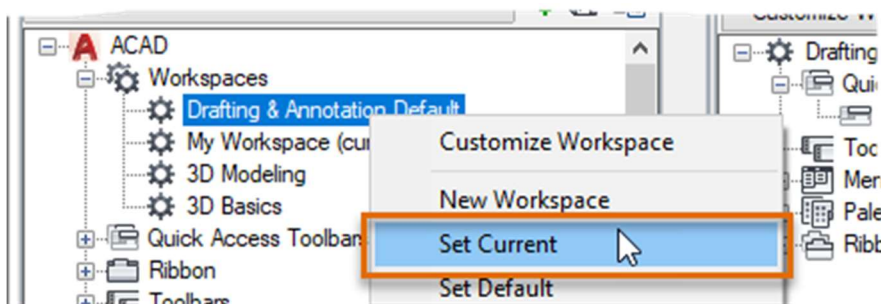
2. Right-click over the tab that represents the My Tools palette and choose Delete.
3. In the Confirm Palette Deletion dialog box, click OK.

In these steps, you remove the workspace, Quick Access toolbar, ribbon tab, ribbon panel, and command created in the exercises:

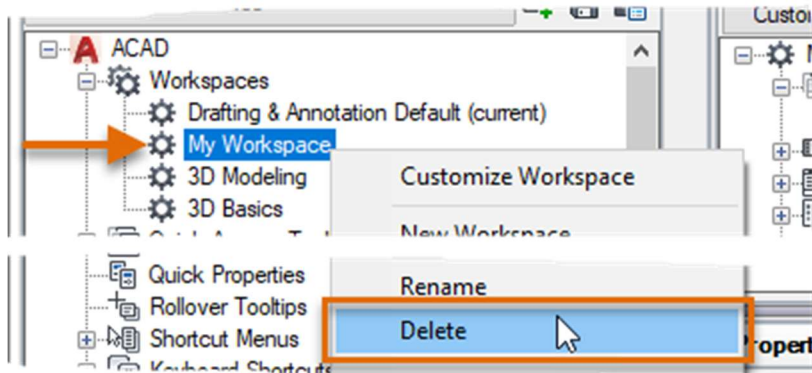
1. In AutoCAD, on the ribbon, click Manage tab > Customization panel > User Interface.



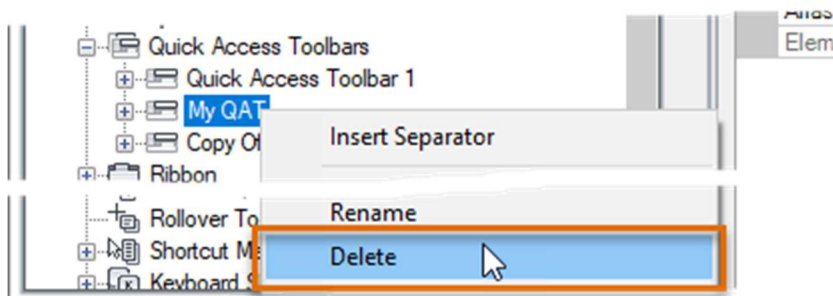
2. In the Customize User Interface (CUI) Editor, under the Customizations in All Files pane, expand the Workspaces node.
3. Select Drafting & Annotation. Right-click and choose Set Current.



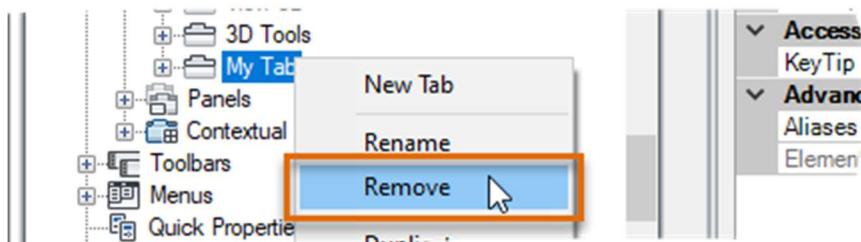
4. Select My Workspace. Right-click and choose Delete.



5. In the Confirm dialog box, click Yes.
6. Expand the Quick Access Toolbars node.
7. Select My QAT. Right-click and choose Delete.

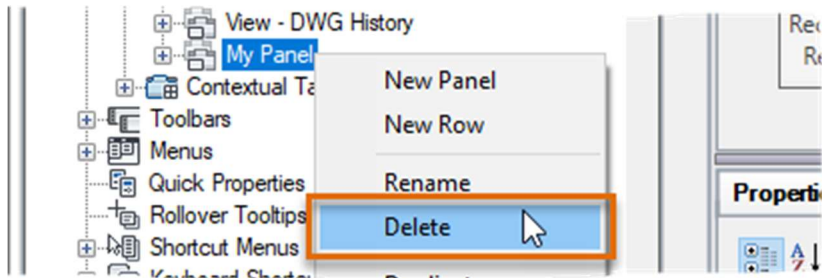


8. In the Confirm dialog box, click Yes.
9. Expand the Ribbon > Tabs node.
10. Select My Tab. Right-click and choose Remove.



11. In the Confirm dialog box, click Yes.
12. Expand the Ribbon > Panels node.

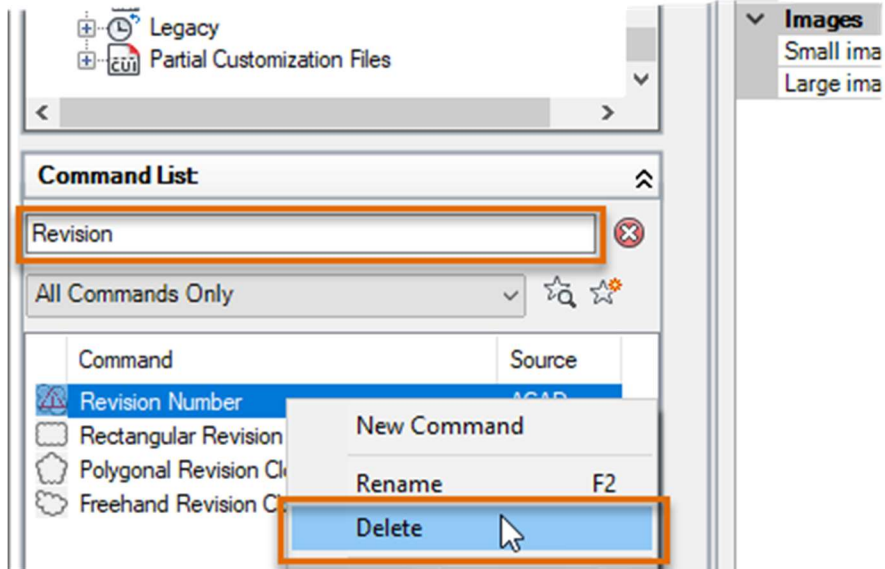
13. Select My Panel. Right-click and choose Delete.



14. In the Confirm dialog box, click Yes.

15. Under the Command List pane, Search Command List text box, and type **Revision**.

16. Select Revision Number. Right-click and choose Delete.



17. Click OK to save the changes made to the customization (*acad.cuix*) file and exit the CUI Editor.

In these steps, you remove the custom desktop shortcut:



- On the Windows Desktop, select the My AutoCAD Icon shortcut and press the Delete key.

Reset the AutoCAD Environment (<1 min)

The steps under this section explain how to reset AutoCAD to its default install state. You will also have to remove the desktop shortcut as explained under the *Restore the AutoCAD Environment* section.

Warning!: This will result in the removal of any customization that was done prior to the exercises in this handout, so proceed with caution. The steps outlined in *Restore the AutoCAD Environment* should be enough to restore the previous state of AutoCAD prior to completing the steps in this handout.

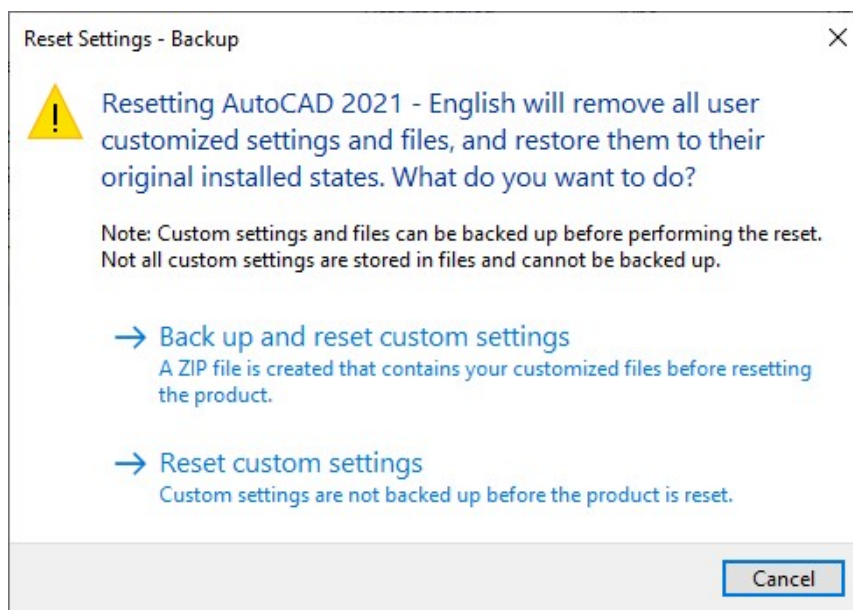
In these steps, you reset the AutoCAD program:

1. Close all instances of AutoCAD.
2. Do one of the following:
 - On the Windows 8 or Windows 10 Start Screen, under the AutoCAD <release> - English category, click Reset Settings to Default. 
 - On the Windows 7 taskbar, click the Start button > All Programs > Autodesk > AutoCAD <release> - English > Reset Settings to Default. 

Note: If Reset Settings to Default is missing from the Windows Start screen or menu, right-click the AutoCAD <release> - English shortcut in one of the mentioned locations above and choose More > Open File Location. Then double-click Reset Settings to Default.

3. In the Reset Settings - Backup dialog box, click Reset Custom Settings.

Click Back Up and Reset Custom Settings to back up your custom files and settings to a ZIP file which can later be imported to restore your custom files and settings.



4. When the Reset Settings - Confirmation message box is displayed, click OK.

