

Creating a culture of collaboration with construction technology

Yvonne Schröder

Partner, Righetti Partner

Aditya Thakur

Group Product Manager, PlanGrid



Introduction

Aditya Thakur

- Group Product Manager at PlanGrid
- Worked in PlanGrid since 2017
- Overseeing construction technology development focused on helping construction companies standardize workflows on PlanGrid through the construction lifecycle. Building features that make it easy for users to Adopt PlanGrid and collaborate with multiple construction entities.

PlanGrid

Mobile-first solutions for fast, accurate information to the field

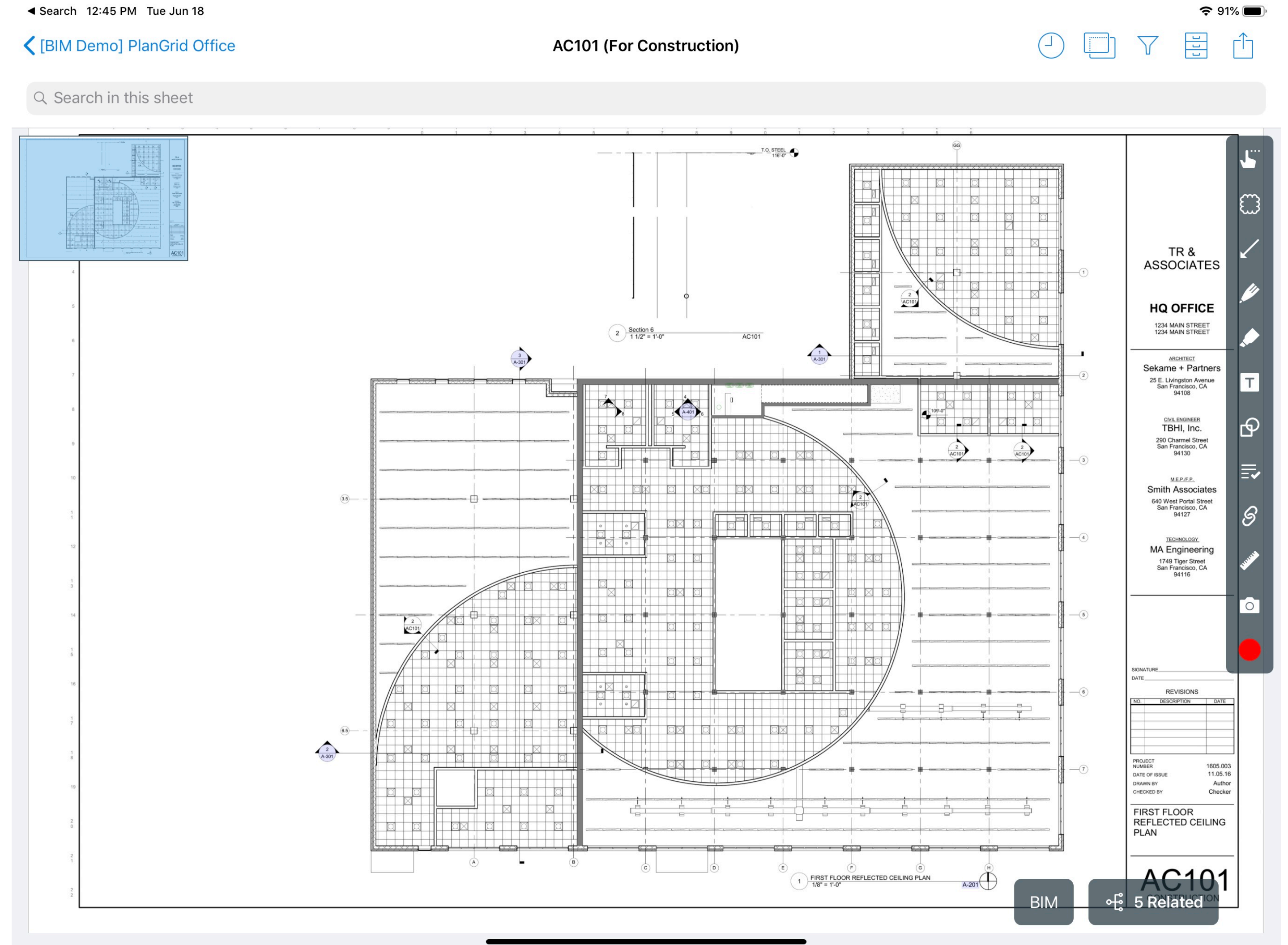
Smart Drawings — Keep the entire team working from the current set.

Snags and Tasks — Flexible tracking for scheduled and unscheduled work.

Field Reports — Track and manage any report template.

Progress Photos — Capture every stage of construction with photos linked to sheets and location.

Living As Built — Simplify turnover with a comprehensive project archive.





Introduction

Yvonne Schröder

- Partner and Member of the management team at Righetti Partner Group
- Worked at Righetti Partner Group in Zurich since 2011, moving to management role in 2014
- Overseeing projects covering all aspects of the build lifecycle
- Holds an MBA and MSc in Architecture



Righetti Partner Group

- Construction management firm in Zurich and Berne, Switzerland, 20+ employees
- Focus on construction management, other services like digitalisation consultancy or schedule and cost overseeing
- Projects including housing, office blocks, hospitals and museums, mainly reconstruction and renovation
- Culture of long-standing, effective partnerships with subcontractors and clients

Righetti Partner Group Projects



VZ Eggbühl



University Hospital Zurich



Walzmühle Frauenfeld

Challenges

Paper-based document management system

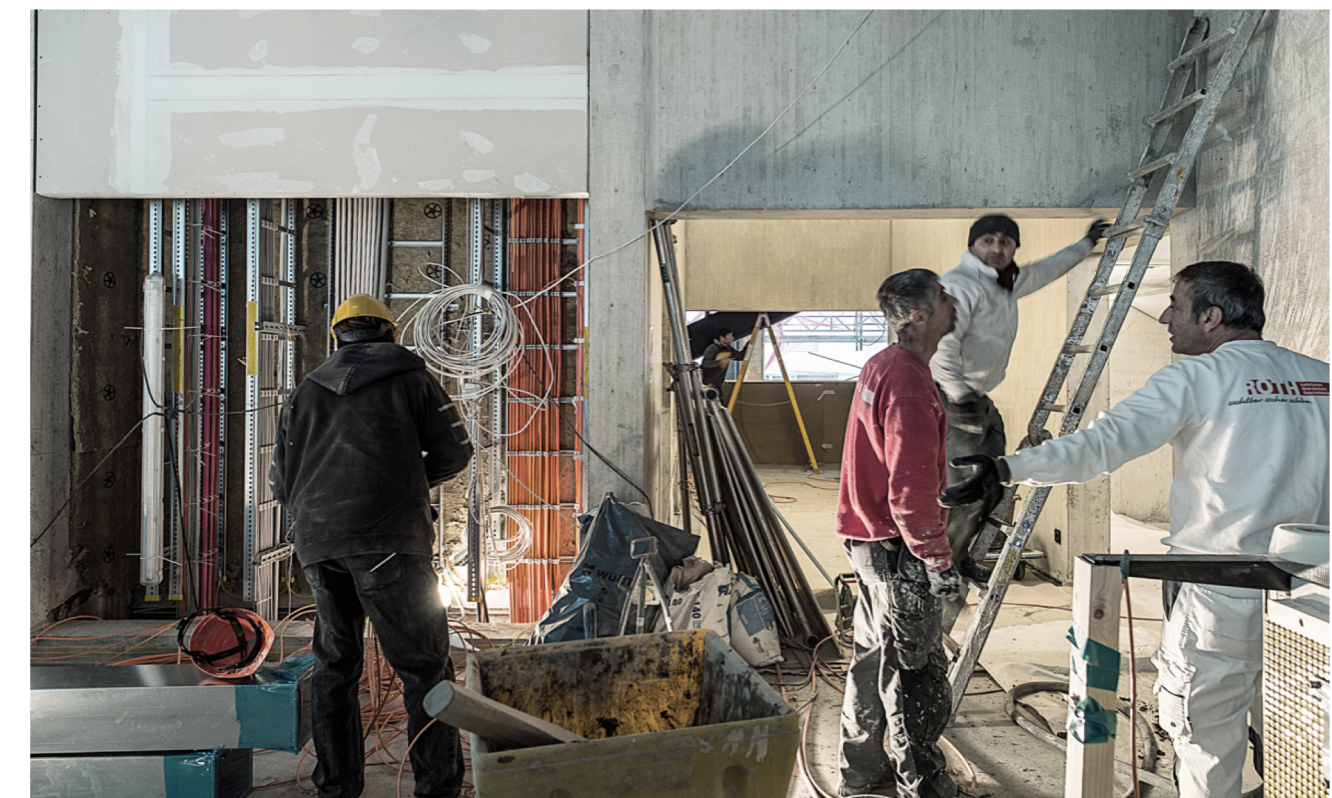
- Risk of outdated information
- Need for a central source of truth

Defect management

- Defect location by tradesmen on site
- Overview over the remedy of corrections

Reporting / Documentation

- Time-consuming and tedious site reports
- Quality / Safety management internally
- Easy to read reports for clients
- Picture matching to plans rather than dates



Why PlanGrid for Righetti Partners

- Construction software designed for the jobsite
- Issues (task) management function, marking issues on drawings and assigning fixes
- Cloud-based software keeps all documents up to date
- Ease of use
- Access to smart PDF updates - protocol for project agreement

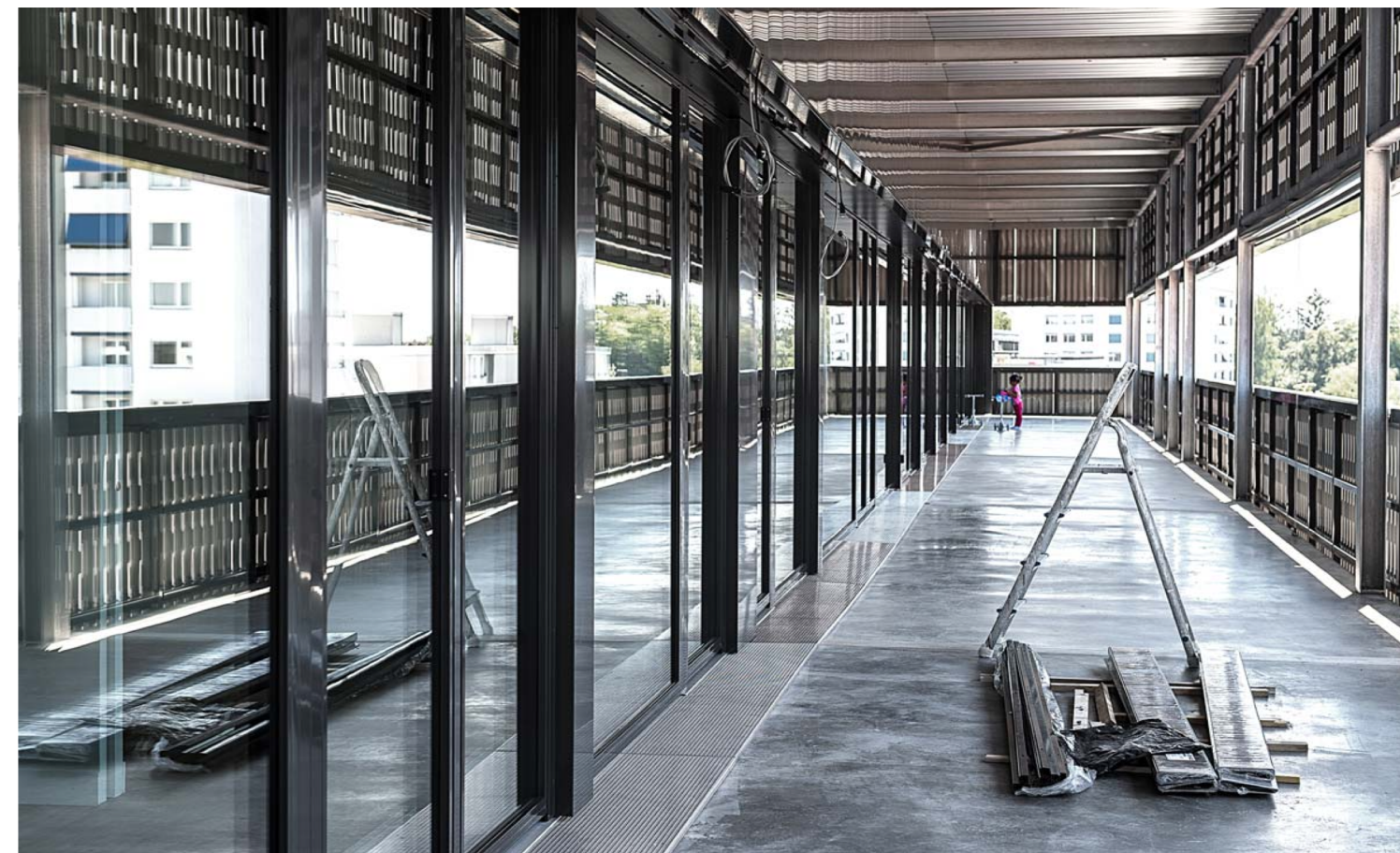
The First Project - City Center Dübendorf

Redevelopment of a 1960s building

- Quick adoption by the team
- Seamless issues management
- Single source of truth for all collaborators
- Reduced administrative burden
- Closer relationship with clients



The First Project - City Center Dübendorf



Field Report Template

Field Reports

Reports

Templates

Templates (5)

Archived Templates

Add New ▾

Archive

Edit

Name	My Permissions
<input checked="" type="checkbox"/> Baustellenrapport RPG	Manage, Submit, R
<input type="checkbox"/> (Sample) Daily Report	Manage, Submit, R
<input type="checkbox"/> (Sample) Daily Safety Inspection	Manage, Submit, R
<input type="checkbox"/> (Sample) Job Hazard Analysis	Manage, Submit, R
<input type="checkbox"/> (Sample) Time Sheet	Manage, Submit, R

✕ Edit Report Template

180404_Rapportzettel_er.pdf

Replace PDF

Cancel

Save

Ready-to-use Checklists



Checkliste Gerüst

Projekt	<input type="text"/>	Datum	<input type="text"/>
	<input type="text"/>		
Autor	<input type="text"/>		

Gerüstkonstruktion

- 1.)

Ist das Gerüst für die auszuführenden Arbeiten genügend tragfähig?

 - Tragfähigkeit eines Verputz- oder Malergerüstes:
200 kg (2 kN) pro Quadratmeter
 - Tragfähigkeit eines Maurergerüstes:
300 kg (3 kN) pro Quadratmeter
 - Tragfähigkeit eines Steinhauergerüstes:
450 kg (4,5 kN) pro Quadratmeter

☐ ja
☐ nein
- 2.)

Ist überall die minimal erforderliche Gangbreite vorhanden?

 - 60 cm bei Verputz- und Malergerüsten
 - 90 cm bei Maurer- und Steinhauergerüsten

☐ ja
☐ nein

Gerüstzugang

- 3.)

Sind sichere Zugänge zu allen Gerüstgängen in genügender Anzahl vorhanden?

 - max. 50 m zwischen zwei Zugängen

☐ ja
☐ nein

Standardised Tasks

Tasks

Overview

Tasks

Stamps

Reports

+ Create Task

Import

Edit

Move

Delete

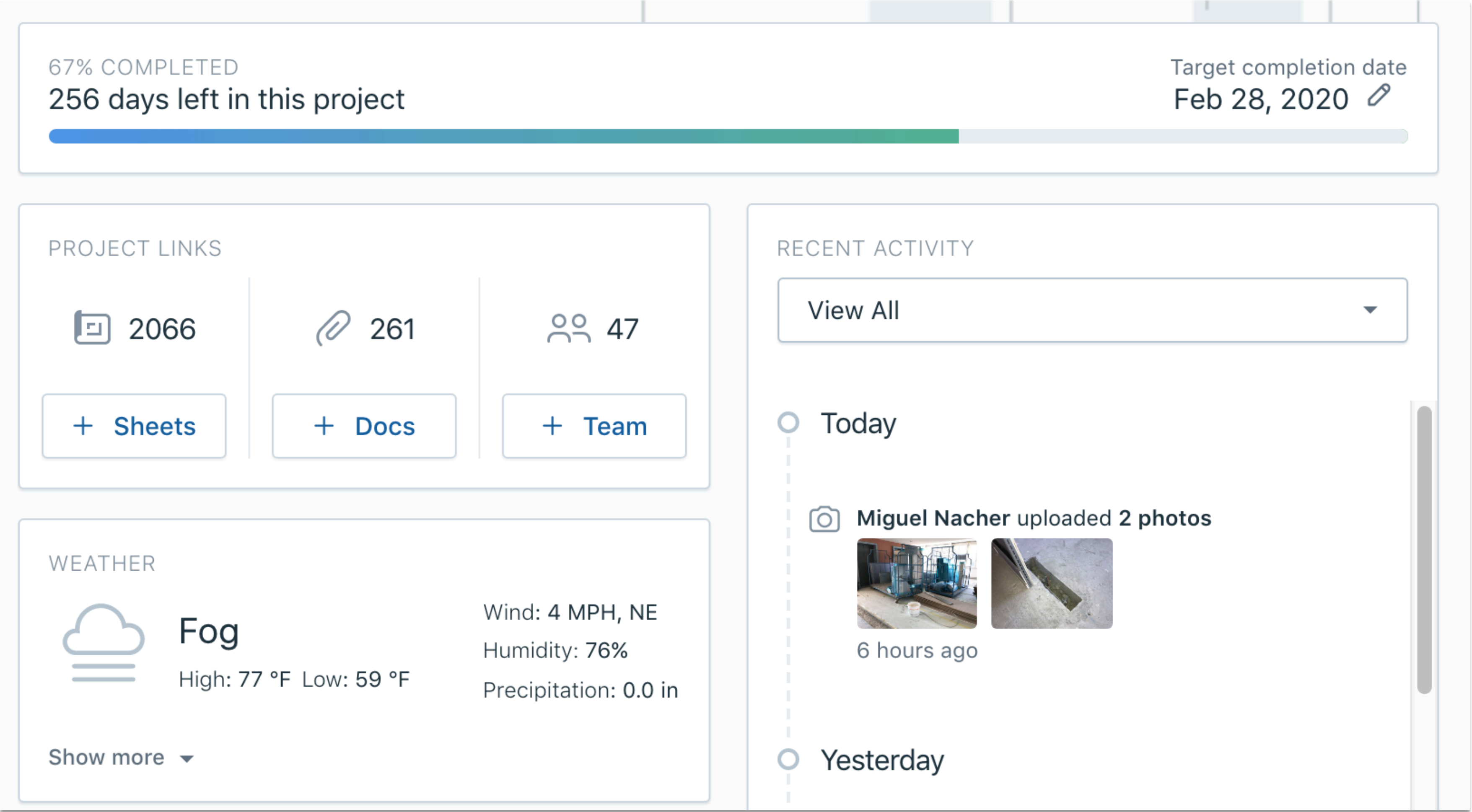
Export (All)

Filters

<input type="checkbox"/>	Stamp	Title		ID	Status	Due date	Assigned to	Location	Sheet	List
<input type="checkbox"/>	LÜ	Lüftung Sämtliche Gegenst...	1 3	#431	Open	06/18/2019	Reiner Manthe		61100-...	Unlisted
<input type="checkbox"/>	PE	Elektro Was soll der UB-ler ...	1 2	#430	Open	06/17/2019	Mike Leuthard		61100-...	Unlisted
<input type="checkbox"/>	PA	Architektur Zementöser UB auc...	3	#429	Open	06/17/2019	Jacek Motyl		61100-...	Unlisted
<input type="checkbox"/>	BM	Konstruktion Bau... Metall-Verkleidung ...	1 3	#428	Open	06/14/2019	Florian Blattmann		S-G-5...	Unlisted
<input type="checkbox"/>	GI	Gipserarbeiten	2	#426	Open	06/20/2019	Giorgio Cetrano		61100-...	Unlisted

Showing 1 - 50 of 371

Project Hub



The Benefits

IMPROVED PRODUCTIVITY

- Building right first time, reducing rework
- Cutting down admin tasks
- Removing frustrations for team

FINANCIAL BENEFITS

- Real-time cost control and better cost certainty via Smart PDFs as “Regierapport”
- Supports forecast of final project fee
- Reducing cost of printing and reprinting
- Competitive quotes for clients

STANDARDISING PROCESSES

- Established master project template
- Predefined stamp categories, issues lists and reporting templates

STRONGER RELATIONSHIPS

- Better information-sharing with collaborators
- Removing source of disputes
- Closer connection to clients and competitive differentiator

The Results

50
PROJECTS

Using PlanGrid

25,000
SHEETS /
DOCUMENTS

Uploaded/Created

80
PARTNERS

Working with
PlanGrid
in our projects

4
HOURS A
WEEK

Time saved per
person

Where are we going with PlanGrid?

Righetti Partners is using PlanGrid on every project.

- Inclusion of the use of PlanGrid into the tender process
- Workshops introduce PlanGrid to different trade contractors
- Include more and more stakeholders to directly use PlanGrid
- Improve standardisation of use of PlanGrid to increase efficiency and prevent loss of knowledge
- Exploring PlanGrid Connect to link to Confluence and other new functionalities and API solutions
- Building on strong relationships

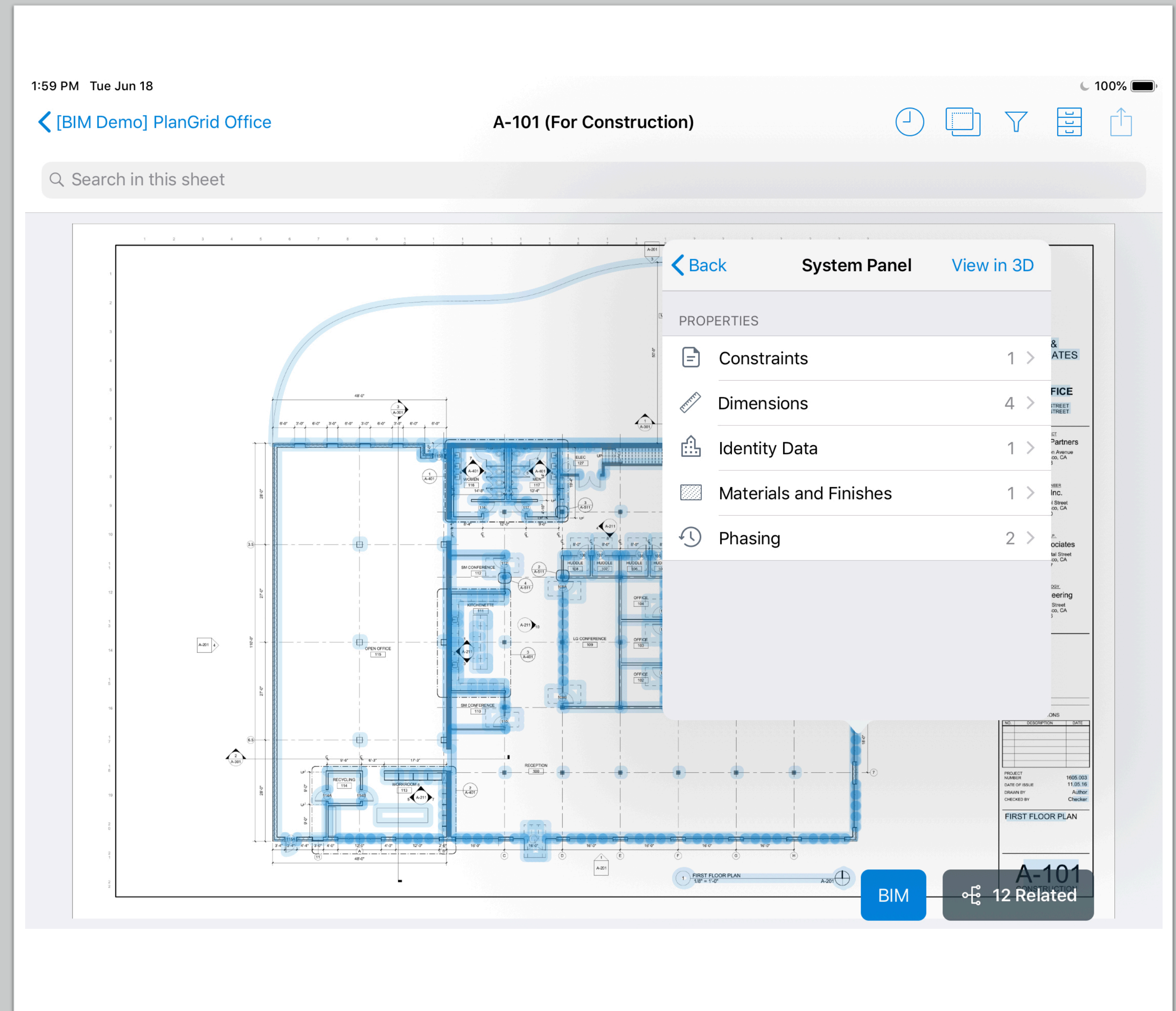
Recent & Upcoming Launches

Bringing BIM to the Field

BIM-enabled Sheets

Users can tap on objects and see properties as well as seamlessly navigate into the 3D space.

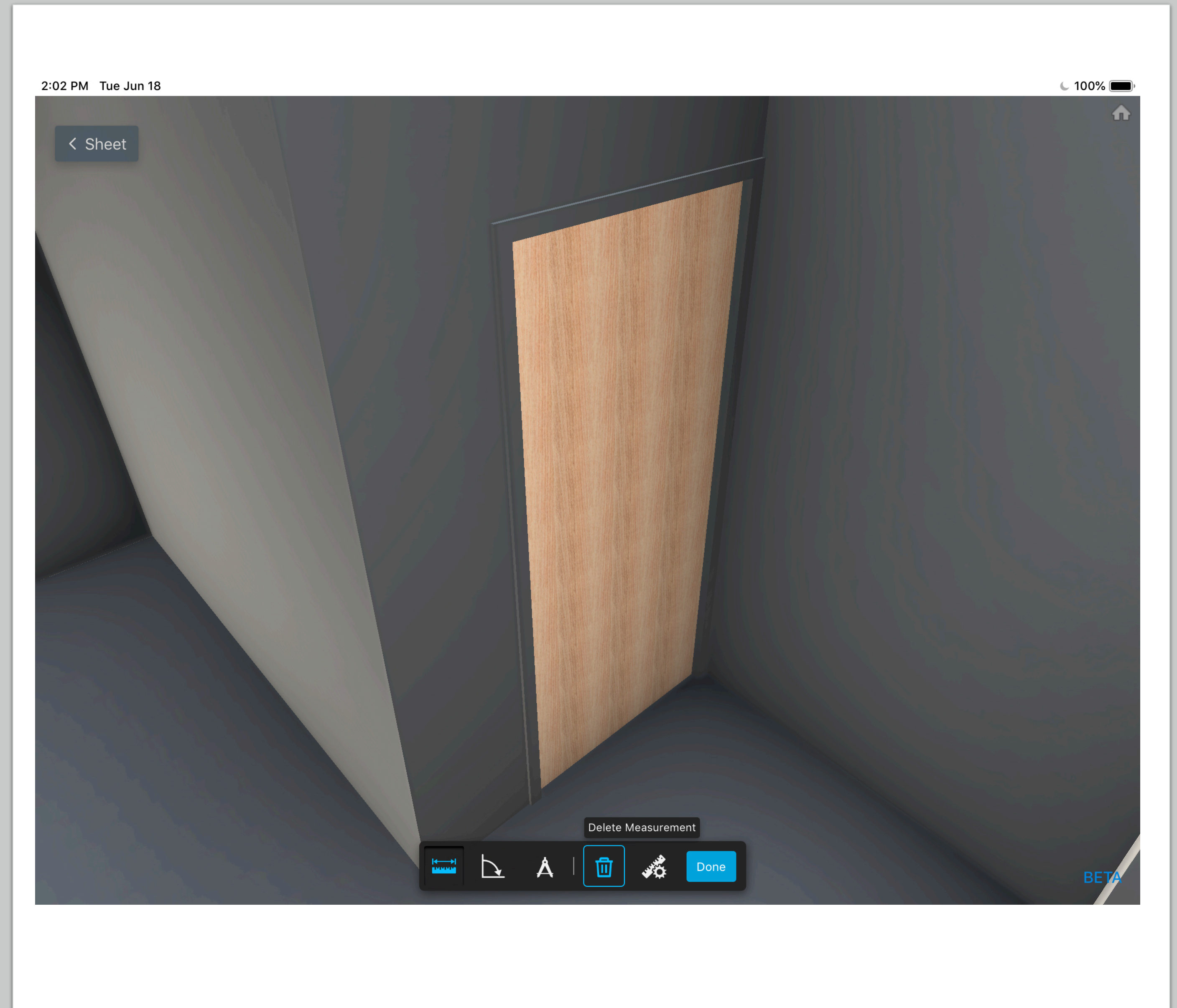
- Access relevant data properties and measurement at your fingertips in 2D.
- Reference object details right on the jobsite, without back and forth.
- Easily navigate in 2D, tap to view in 3D.



3D BIM Viewer

Where users can quickly and easily navigate the 3D space, take measurements and tap objects for properties.

- Instantly load 3D without lag, even offline.
- Navigate and zoom into model details with intuitive gestures.
- Get accurate measurements between model objects with snap-to tools.

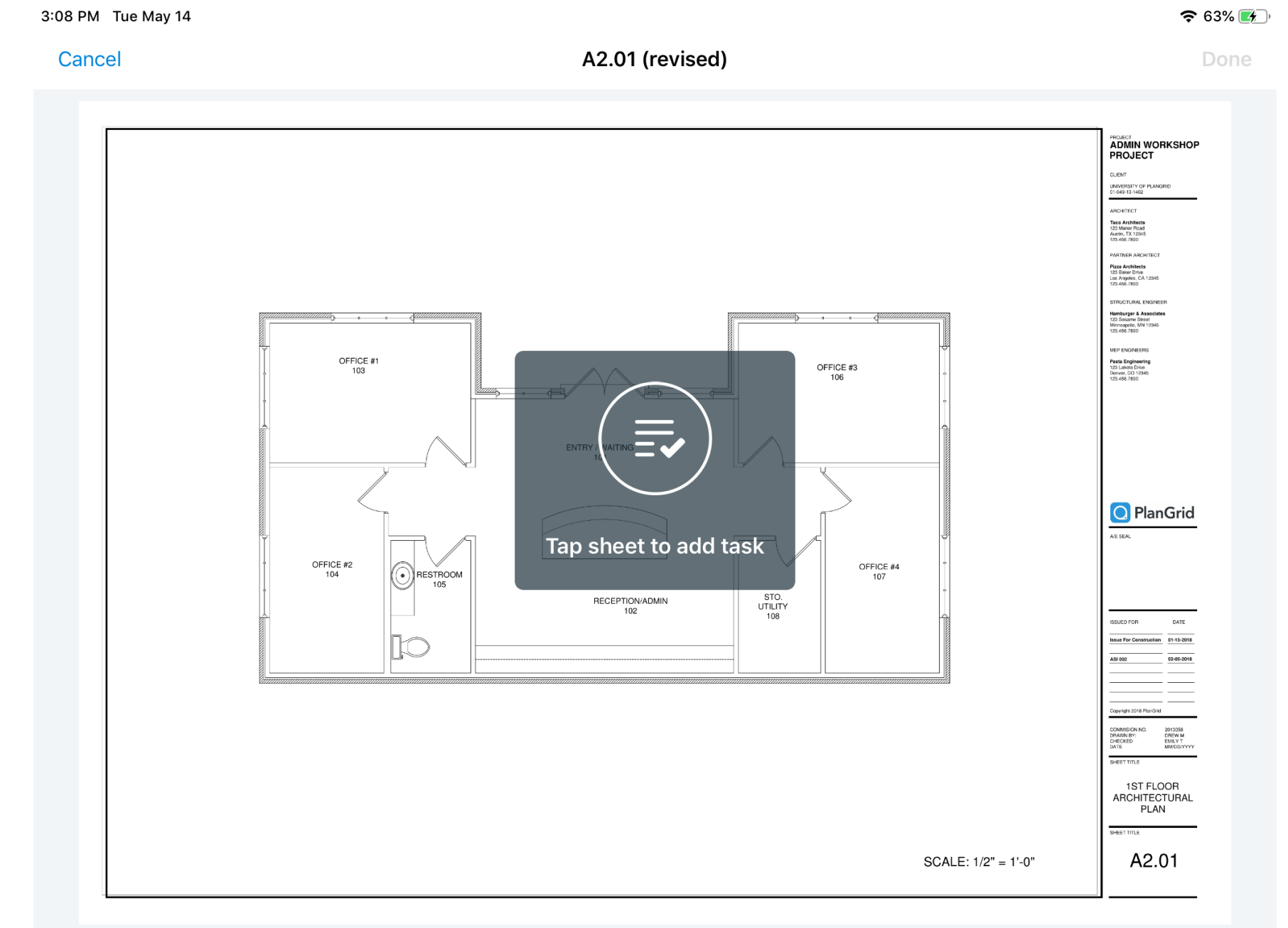


Taking Tasks to the Next Level

Tasks

Add planned work to sheets

- Bulk import tasks from lookahead schedules and then add them to the sheet for the field team to view
- Place tasks references from QA/QC reports, checklists and daily reports onto the sheet at anytime
- Just as easily as you add a task to a sheet, edit or remove it

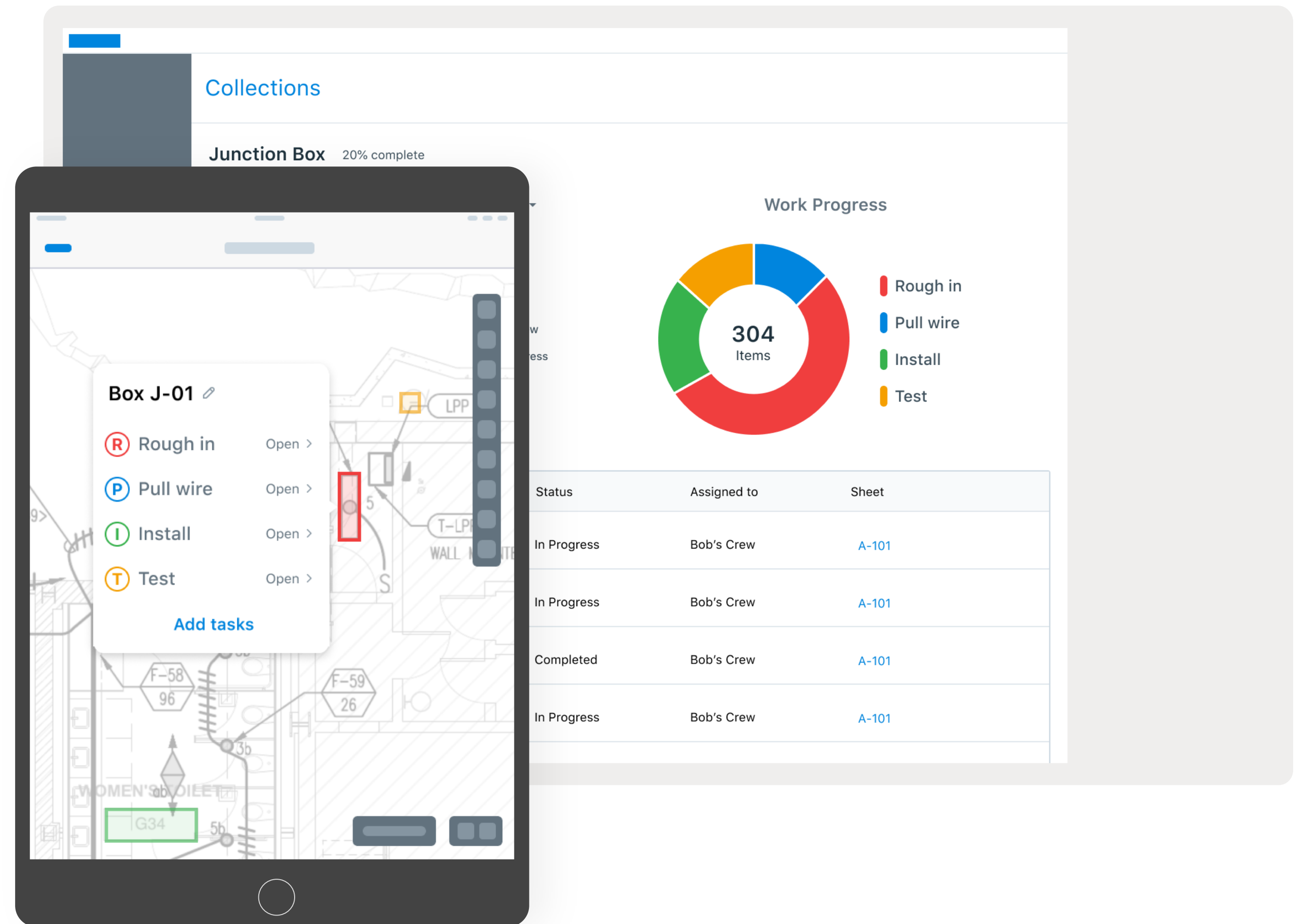


Tasks

See how work is progressing

View progress in real-time to see how and where work is progressing on the jobsite.

- Clean and easy to read
- See automatic progress visualization as teams complete tasks to better coordinate crews and identify issues
- View dashboards and generate progress reports to stay on schedule and identify potential cost overruns

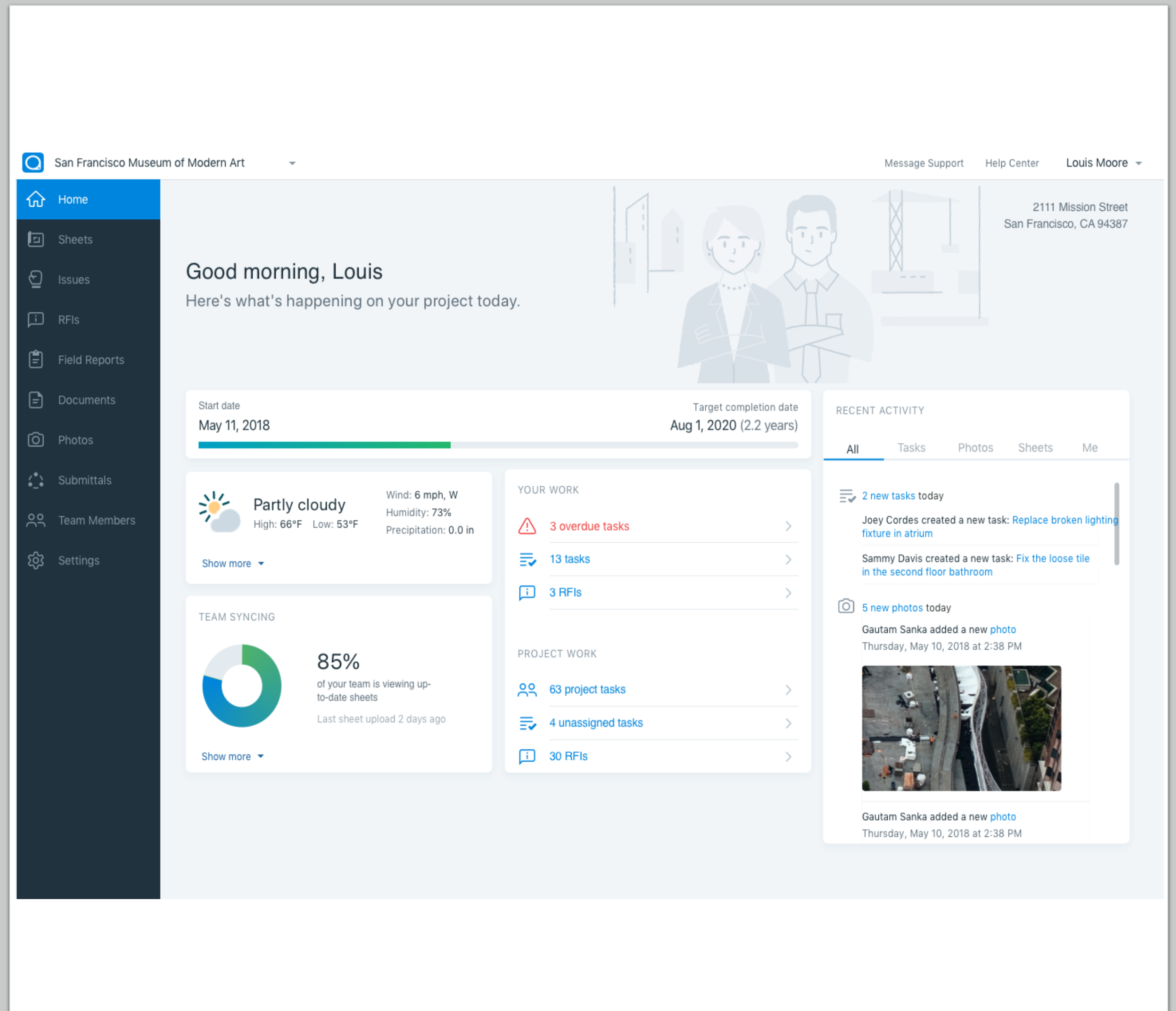


Ease of Use

Make data-driven business decisions

Monitor the status and progression of a single project.

- View recent activity to know what work is occurring in real-time
- Ensure your team is working off the most current information and if they're not, identify who needs to refresh their project



Q/A



AUTODESK®

Make anything™

Autodesk and the Autodesk logo are registered trademarks or trademarks of Autodesk, Inc., and/or its subsidiaries and/or affiliates in the USA and/or other countries. All other brand names, product names, or trademarks belong to their respective holders. Autodesk reserves the right to alter product and services offerings, and specifications and pricing at any time without notice, and is not responsible for typographical or graphical errors that may appear in this document.

© 2019 Autodesk. All rights reserved.

