

The Power of Forge

Ron Locklin

Director, Autodesk Cloud Platform (Forge)





About the speaker

Ron Locklin | Director
Forge Strategy & Marketing

Ron Locklin is responsible for the global business management for the Autodesk Cloud Platform (Forge), including strategy, pricing, packaging, partner strategy, sales enablement, and marketing.



The Power of Forge

What is Forge?

How does Forge fit within the “Future of Making” vision?

How can customers Benefit from Forge?

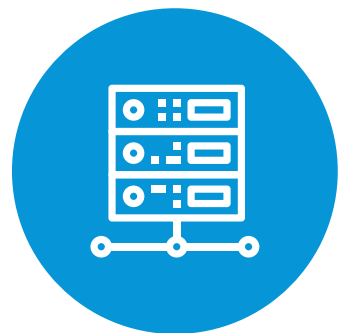
What are examples of Forge’s Power?

What should I do next?

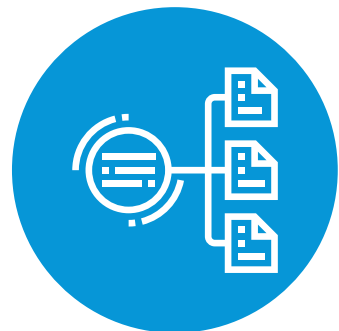
Forge: The platform powering the Future of Making

A set of **web service APIs*** and components that power the future of making.

FORGE IS:



The **common SaaS technology stack** Autodesk uses to build its own web applications.



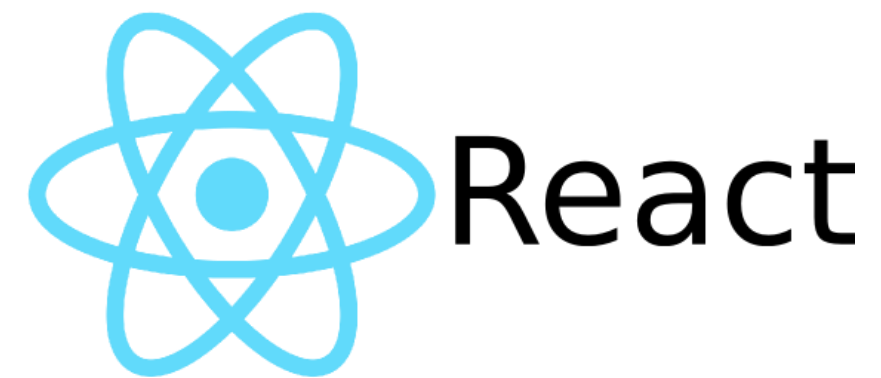
APIs* you can use to **extend and integrate Autodesk web applications** into your workflows.



Components from our technology stack that you can use in **your own web applications**.



Forge is based on Web Standard Technologies



What is Forge?

SAAS DEV

Internal baseline for all SaaS development AND external SaaS platform

API'S

Leverage powerful API's to access data

DATA

Centered on Forge Data

DEVELOPERS

Target audience

Who uses Forge?

INTERNAL AUTODESK DEVELOPERS	ENTERPRISE ACCOUNTS	ISV'S	SYSTEMS INTEGRATORS
<p>Identity</p> <p>Forge data</p> <p>Security</p>	<p></p> <p></p> <p></p> <p></p>	<p></p> <p></p>	<p></p> <p></p> <p></p>

Who interacts with Forge?

**“ECONOMIC
BUYER”**

VP of IT, CIO, CEO
of a small ISV

**DEVELOPER OF A
FORGE APP**

Web apps
developers

**USER OF THE
FORGE APP**

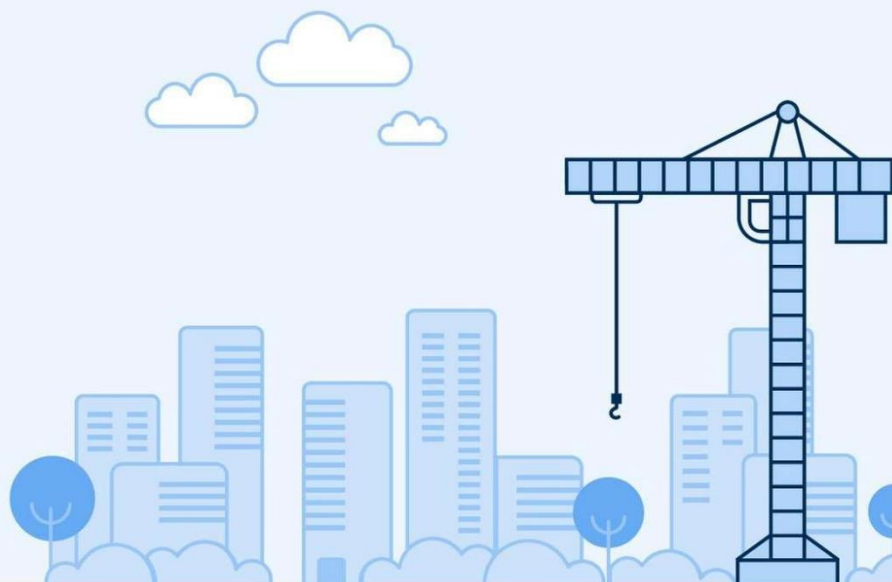
e.g. Marketing team using
dashboard app

**The
Economist**

The world's most valuable resource
is no longer oil, but data

smartsheet

A Digital Transformation Report:
**5 Emerging Trends in the
Construction Industry**



Forbes
INSIGHTS

DIGITAL
TRANSFORMATION

USING DATA-DRIVEN INSIGHTS FOR
EXCEPTIONAL CUSTOMER ENGAGEMENT



Gartner

**Every Organization
Needs a Digital
Platform Strategy**

Forbes
INSIGHTS

CIO's Guide to
Digital Transformation:

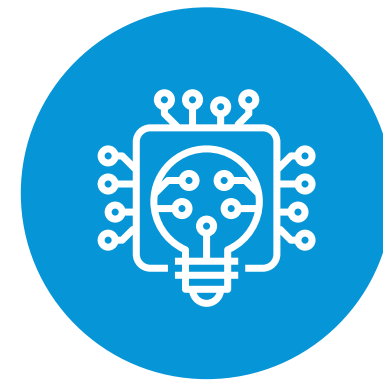
WHY DATA HOLDS THE KEY TO SUCCESS

WORLD
ECONOMIC
FORUM

**Platforms and Ecosystems:
Enabling the Digital Economy**



“Digital Transformation”



HBR

Digital transformation is about **reconstruction the firm** around digital operating principle, integrating traditional assets to address new challenges and pursue new opportunities.



MIT SLOAN

The use of technology to **radically improve performance** or reach of enterprises

Forge enables the Digital Transformation for your Design & Make



Your Digital Transformation



OFFICE



ERP



COLLABORATION

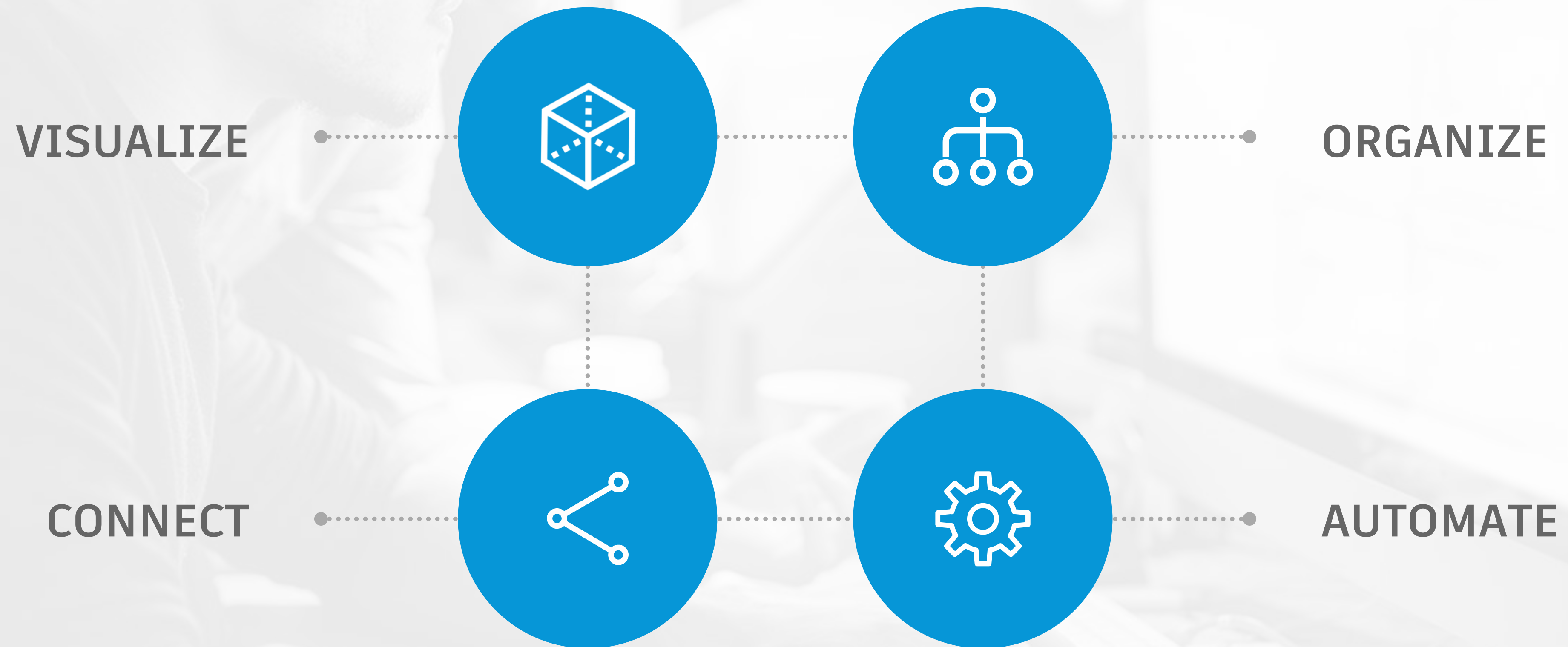


CRM



DESIGN
AND MAKE

How can Forge enable your Digital Transformation?





Better

What customers and partners build with Forge

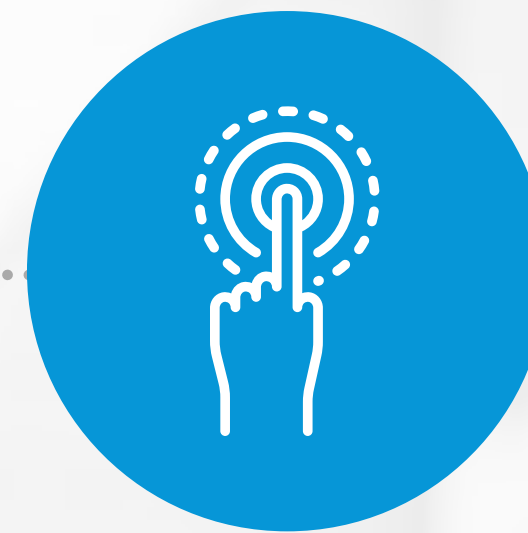
DATA VISUALIZATION
& ANALYSIS



DIGITAL
TWIN



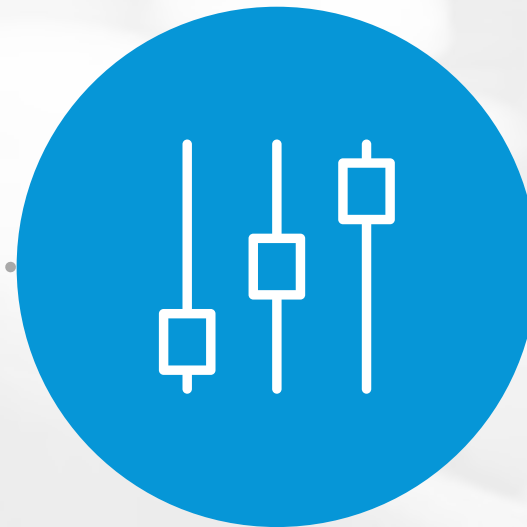
AUGMENTED &
VIRTUAL REALITY



SaaS
INTEGRATION



CATALOGS



CONFIGURATORS



DESIGN AUTOMATION

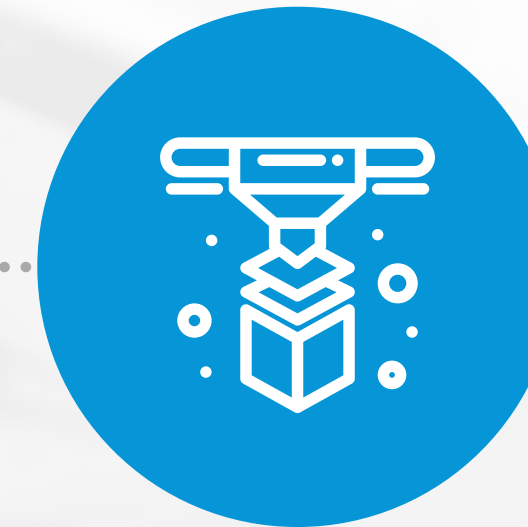


PHOTO TO 3D



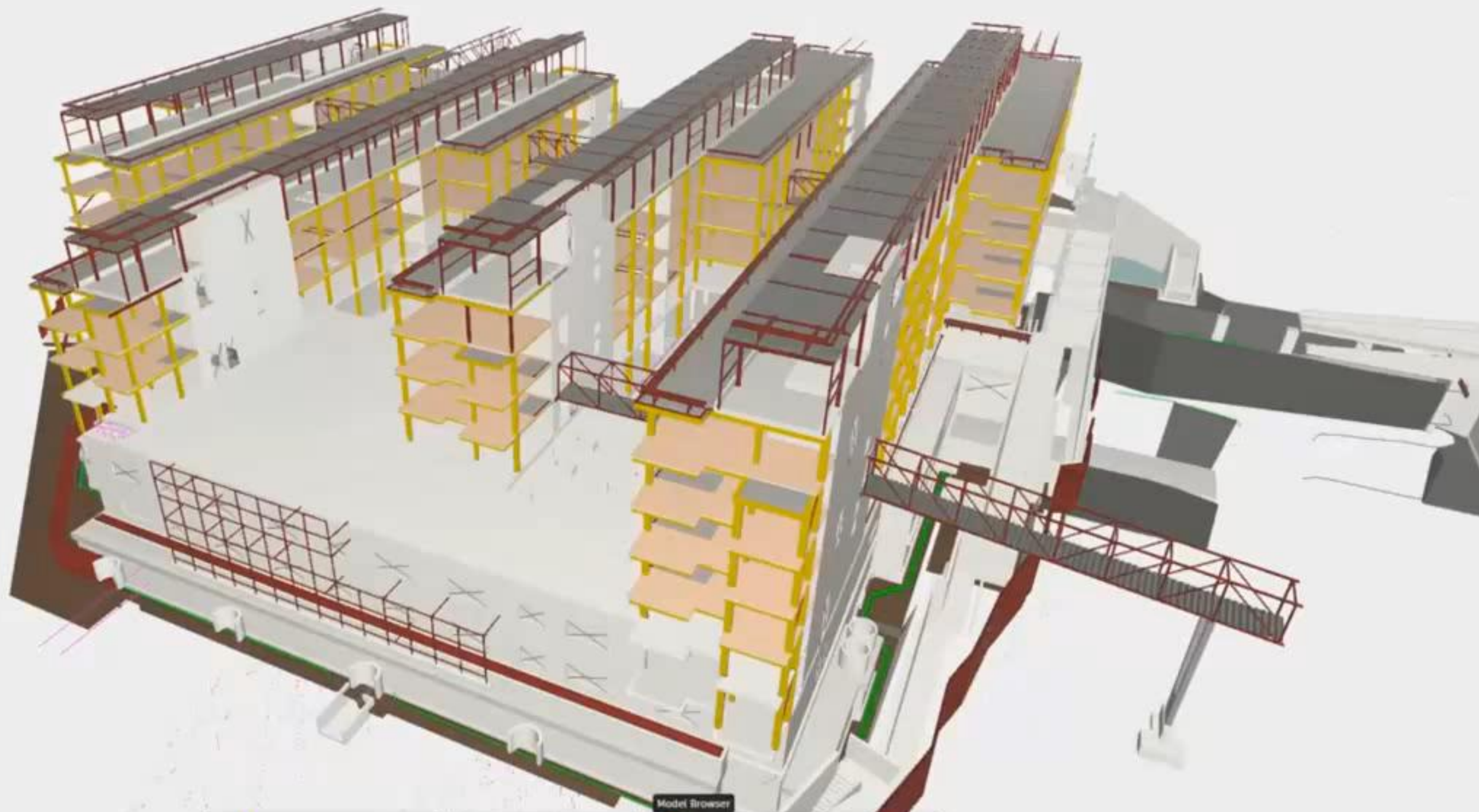
Enhanced Viewer and Analytics







LEFT





Visualization and
Collaboration



CONNECTED CONSTRUCTION INFORMATION

NBS is an Integrated global platform for
everyone involved in the design, supply and
construction of the built environment

OFFICIAL



CONSTRUCTION
WEEK | 2019

BEER FESTIVAL
SPONSOR

[Back to Project](#)

NBS Viewer

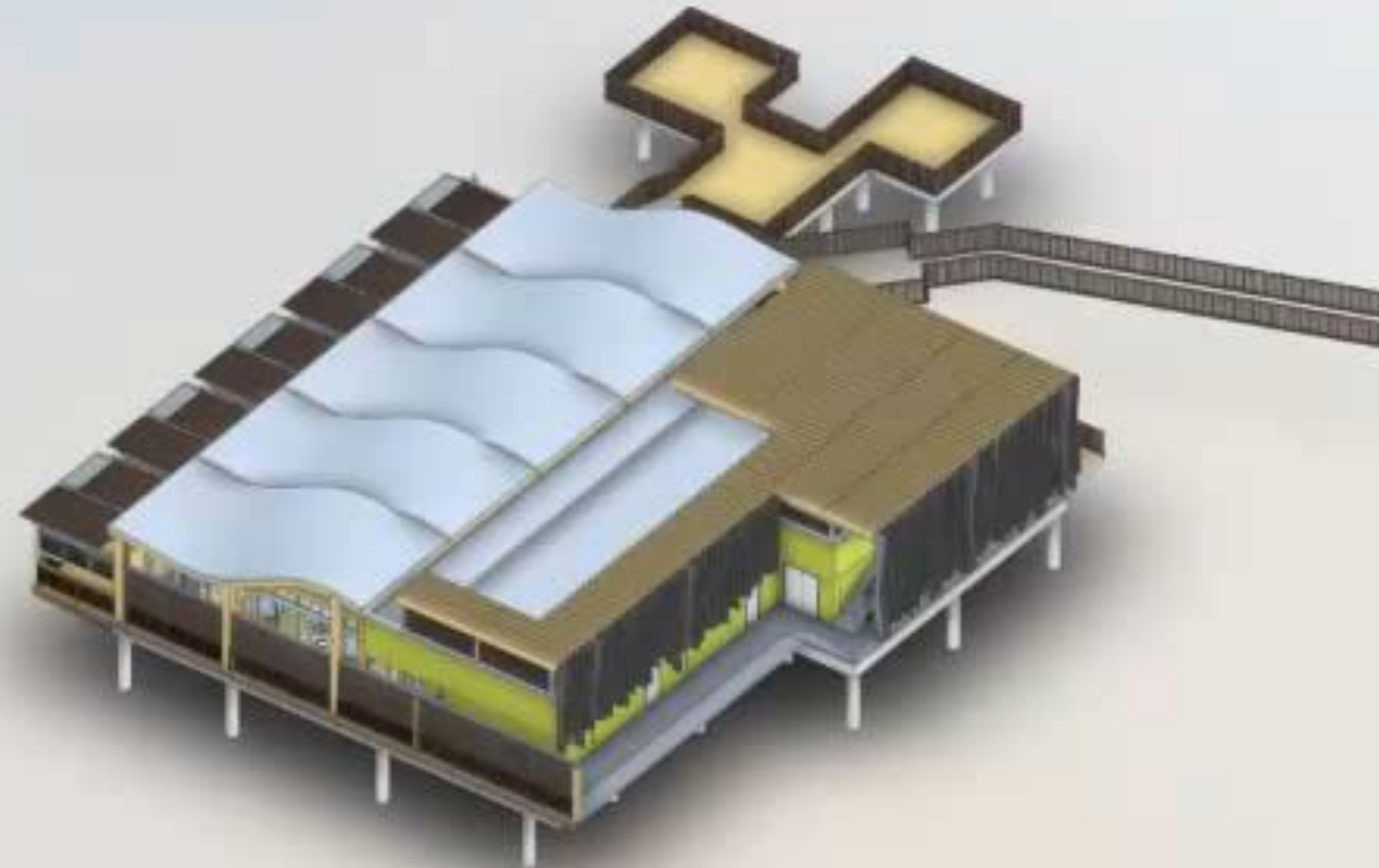
Files

Participants

Contents

Search clauses...

Title	Suffix	NBS Code	Uniclass 2015
Driven precast or prestressed concr...		15-05-65/155	Ss_20_05_65_24
In situ reinforced concrete framing s...		15-65-75/140	Ss_20_10_75_70
Timber framing system		15-65-75/185	Ss_20_10_75_85
Composite concrete deck system		20-05-80/110	Ss_30_12_85_15
Board suspended ceiling system		20-10-10/110	Ss_30_25_10_10
Unit (modular) suspended ceiling sy...	type A	20-10-20/190	Ss_30_25_22_90
Unit (modular) suspended ceiling sy...	type B	20-10-20/190	Ss_30_25_22_90
Unit (modular) suspended ceiling sy...	type C	20-10-20/190	Ss_30_25_22_90
Deck system	type A	20-15-25/125	Ss_30_30_30_25
Deck system	type B	20-15-25/125	Ss_30_30_30_25
Permeable small unit paving system		20-15-90/170	Ss_30_14_90_62
Single layer warm roof covering syst...		20-50-30/170	Ss_30_40_30_80
Stainless steel sheet roof covering s...		20-50-50/145	Ss_30_40_50_80
Bonded or partially bonded cementi...		20-55-15/110	Ss_30_42_15_10
Internal floor tiling system		20-55-35/140	Ss_30_42_32_40
Resilient sheet flooring system		20-55-75/165	Ss_30_42_72_72
Resin flooring system		20-55-77/170	Ss_30_42_54_75
Wood block flooring system		20-55-90/195	Ss_30_20_90_95
Panel cubicle system		25-05-60/160	Ss_25_12_60_60
Masonry internal leaf system		25-10-55/160	Ss_25_13_50_51
Metal post and rail fencing system		25-20-30/105	Ss_25_14_63_51
General pattern wire mesh fencing s...		25-20-30/139	Ss_25_14_67_34
Balustrade and guarding system		25-25-10/110	Ss_25_15_60_05
Handrail system		25-25-10/135	Ss_25_15_60_35
Doorset system	type A	25-50-20/120	Ss_25_30_20_25
Doorset system	type B	25-50-20/120	Ss_25_30_20_25
Doorset system	type C	25-50-20/120	Ss_25_30_20_25
Doorset system	type D	25-50-20/120	Ss_25_30_20_25
Doorset system	type E	25-50-20/120	Ss_25_30_20_25
Louvre screen system		25-55-45/150	Ss_25_50_45_45
Panelized louvre screen system		25-55-45/170	Ss_25_50_45_60
Stick curtain walling system		25-60-15/175	Ss_25_10_20_85



Specification

No specification
Select a clause from the Contents panel or select an object in the model to view its specification

Object

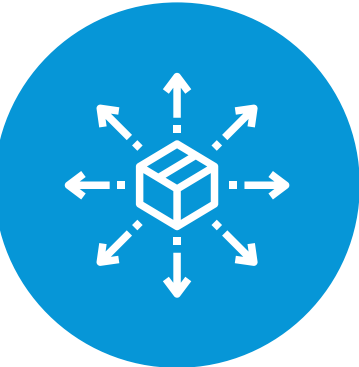


Visualization and
Collaboration



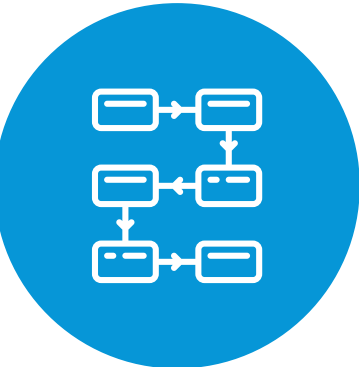
Benefits

FORGE HELPED JE DUNN BREAK THROUGH ITS DATA SILOS, INTEGRATING BIM WITH THEIR INTERNAL ESTIMATING TOOLS AND RUNNING IT ALL THROUGH A SINGLE ERP.



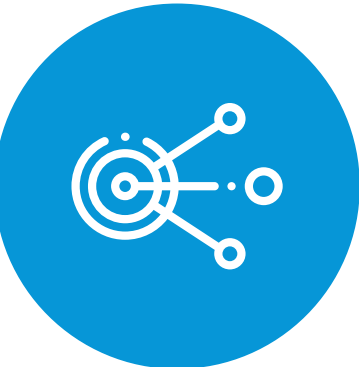
SCALABLE, TRANSPARENT SOLUTION

- Solution enables greater transparency with external users, and enhances design coordination between architects and owners



STREAMLINED WORKFLOWS

- Streamlines the design iteration process between the architects and the engineers that are making the changes



SHARE DATA ACROSS TEAMS

- Integrates virtual models and cost-related history into a seamless application, accessible across teams



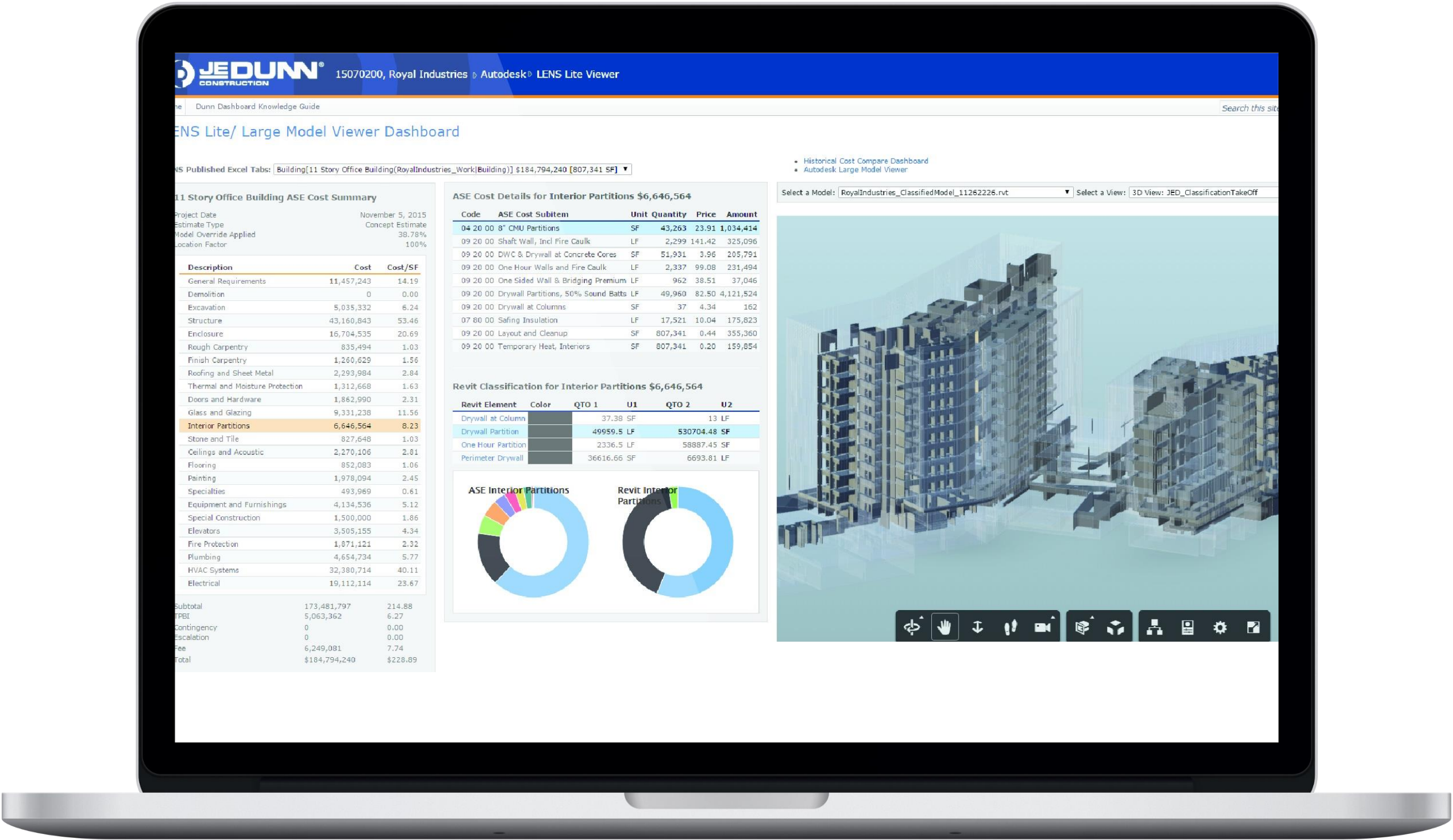
VIEWER



MODEL
DERIVATIVE
API



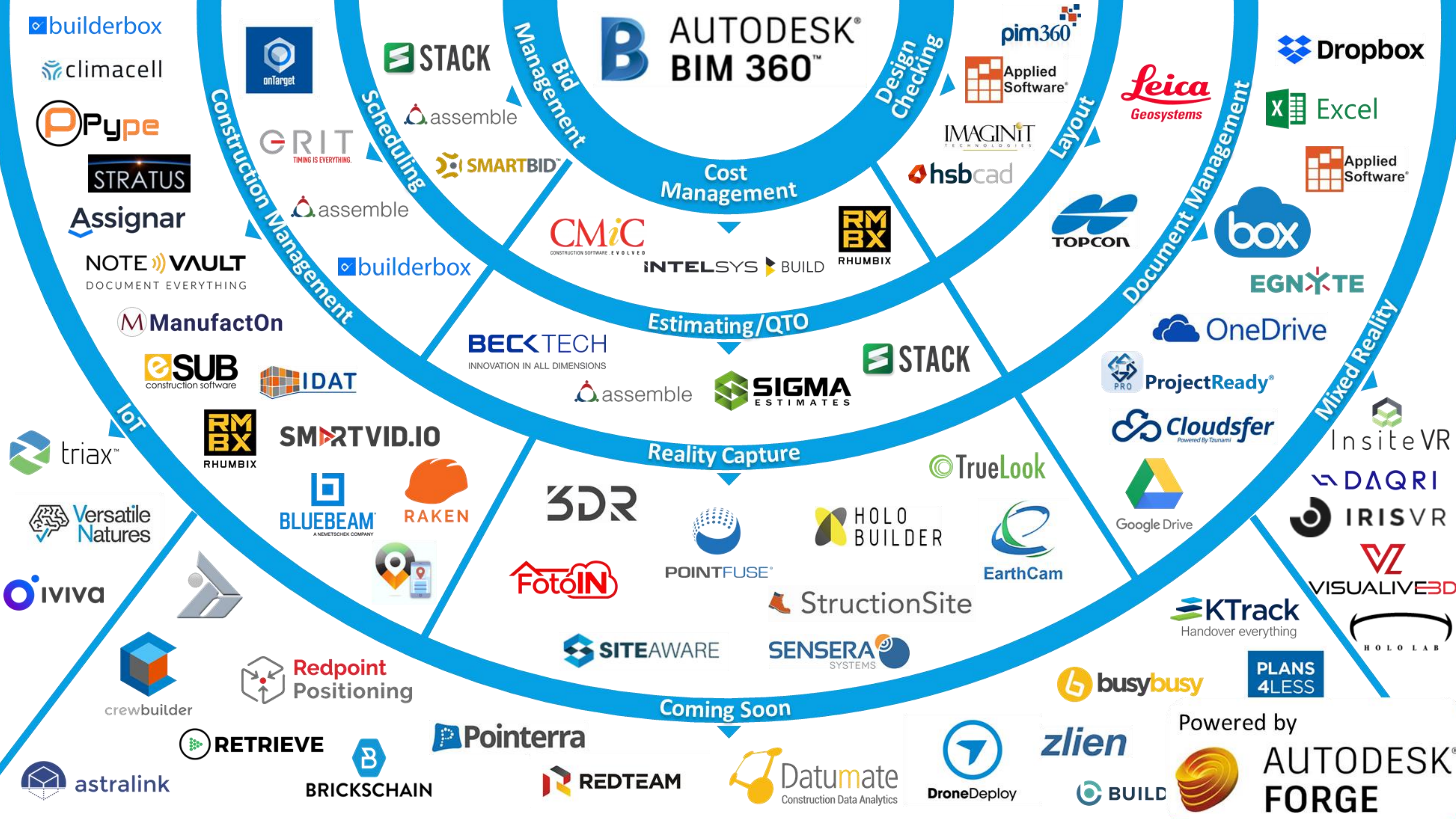
DATA
MANAGEMENT
API



Forge certified systems integrators

WE CERTIFY SYSTEMS INTEGRATORS SO CUSTOMERS HAVE ACCESS TO TRUSTED SUPPORT RESOURCES THAT CAN HELP THEM BUILD SOLUTIONS WITH FORGE.





The Forge Business Model Explained

Web applications cost money to run



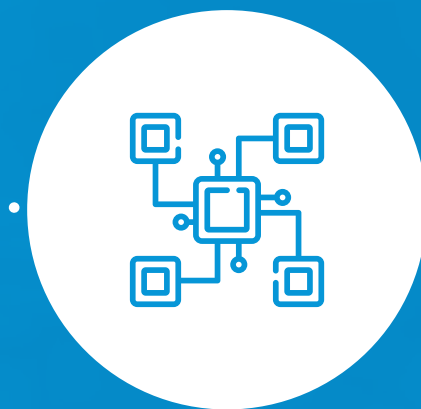
DEVELOPMENT AND
MAINTENANCE



COMPUTE
TIME



STORAGE
COSTS



DATA
TRANSPORT



WEB API
VENDOR COSTS



FORGE



Microsoft Azure



HEROKU

ORACLE®



PubNub

How to access Forge?

EBA CUSTOMERS

Ask your CSM to add a Forge entitlement to your EBA contract

Consumption is in Tokens
(1 Token = 1 Cloud Credit)

OTHER CUSTOMERS

Buy a Forge subscription via
forge.autodesk.com/pricing

100 USD per year –
Includes 100 Cloud Credits

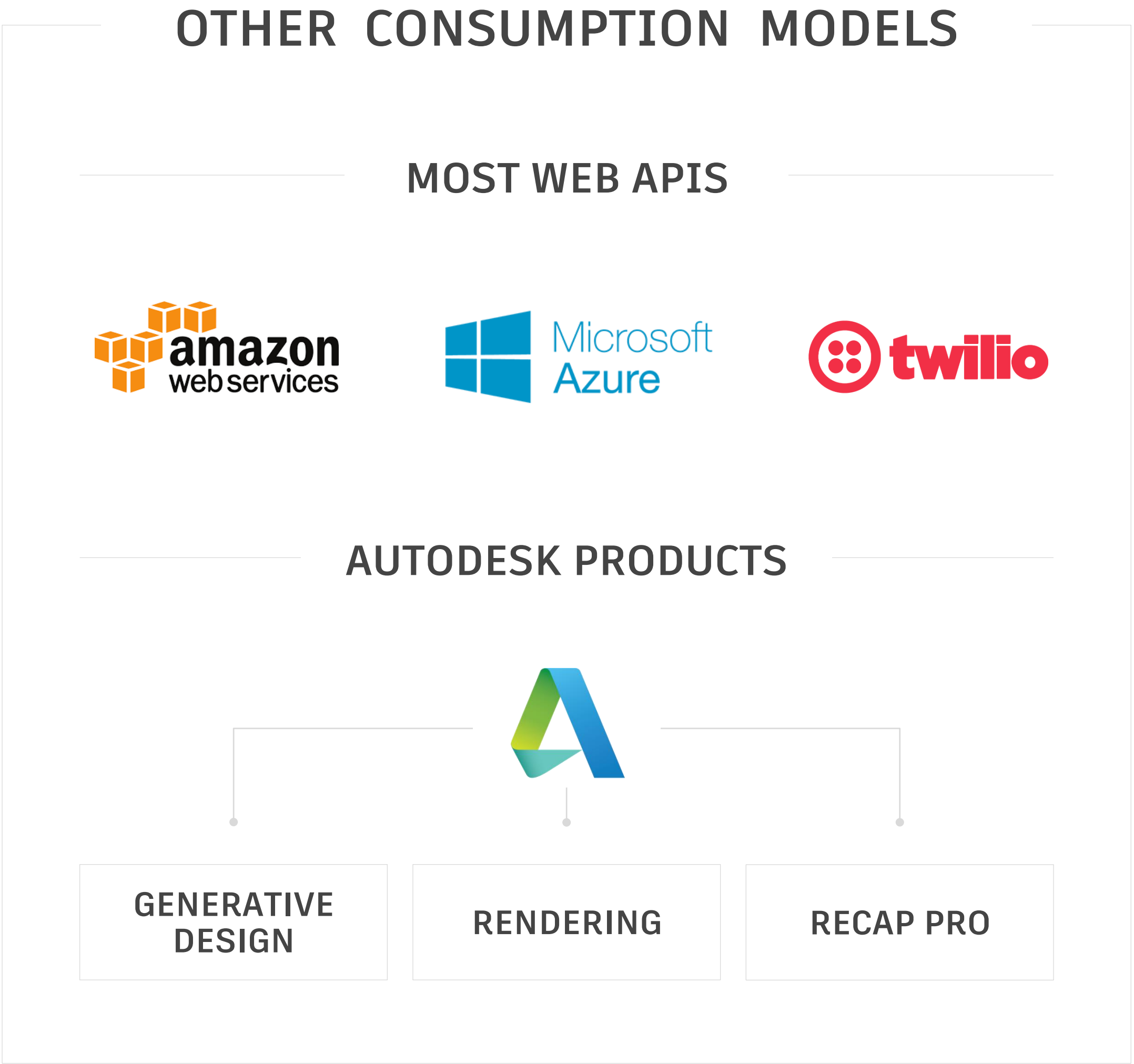
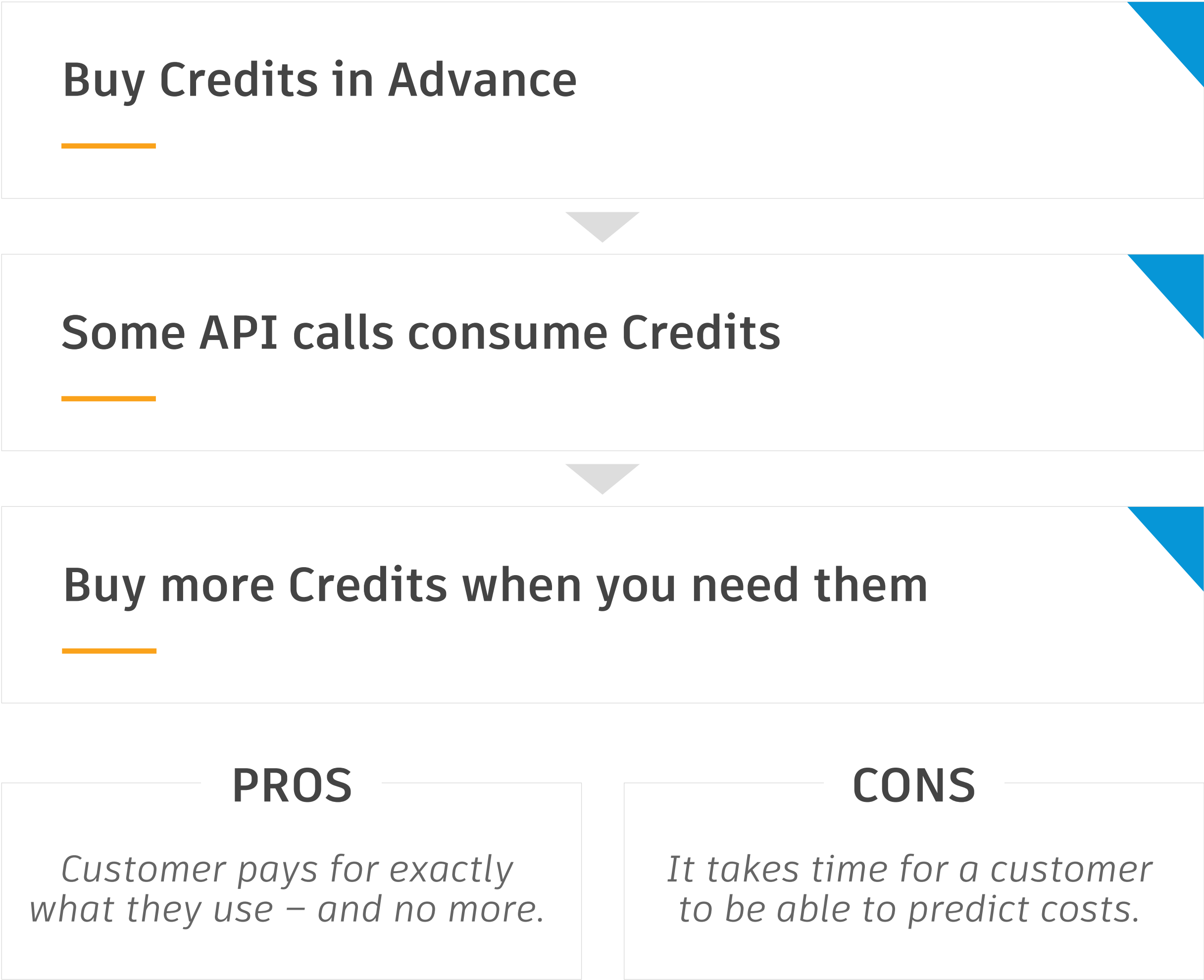
Buy additional Cloud Credits
as needed

BIM 360DOCS/FUSION 360/ FUSION TEAM CUSTOMERS

A subset of Forge APIs is
available for free

Enable access on
forge.autodesk.com/pricing

Forge pricing is based on consumption



What consumes cloud credits?



TRANSLATING A MODEL

Model Derivative API*

- 1.5 CCs for Revit and Navisworks
- 0.2 CCs for everything else
- (Not required to view models uploaded to BIM 360 Docs)



BATCH EDITING A DESIGN

Design Automation API

- 4 CCs per hour of processing time for AutoCAD
- 6 CCs per hour of processing time for everything else
- (Example – Typical time to create 2D drawings from an Inventor model is 1-2 minutes= 0.1-0.2 CCs)



CONVERTING PHOTOS INTO A 3D MESH

Reality Capture API

- 3.5 CCs per gigapixel processed

*Translation cost is 'per model', not 'per file'.



Find out more...

WEBSITE/DEVELOPER PORTAL

forge.autodesk.com

CUSTOMER SUCCESS STORIES

forge.autodesk.com/customers

SALES MATERIAL

forge.autodesk.com/ots

SYSTEMS INTEGRATORS

forge.autodesk.com/systemsintegrators

ACCELERATORS

forge.autodesk.com/accelerator

FORGE DEVCON

forge.autodesk.com/devcon-2019

SALES QUESTIONS

forge.sales@autodesk.com

TECHNICAL QUESTIONS

forge.help@autodesk.com

SYSTEMS INTEGRATORS PROGRAM QUESTIONS

forge.si.program@autodesk.com



AUTODESK®

Make anything™

Autodesk and the Autodesk logo are registered trademarks or trademarks of Autodesk, Inc., and/or its subsidiaries and/or affiliates in the USA and/or other countries. All other brand names, product names, or trademarks belong to their respective holders. Autodesk reserves the right to alter product and services offerings, and specifications and pricing at any time without notice, and is not responsible for typographical or graphical errors that may appear in this document.

© 2019 Autodesk. All rights reserved.

