

Speeding Up Visualization Workflow with Autodesk® 3ds Max® Design

Michele Bousquet

Twitter: @bousquetmichele



What is a “good” 3ds Max Design scene?



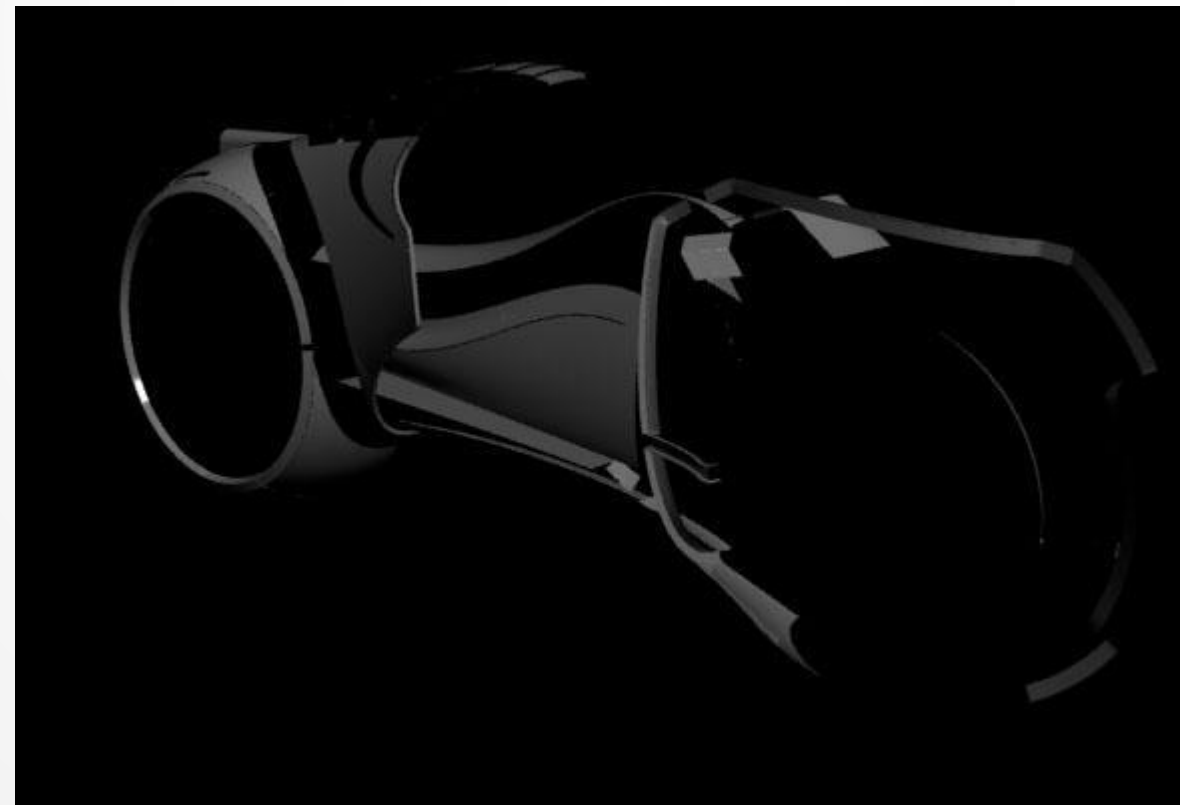
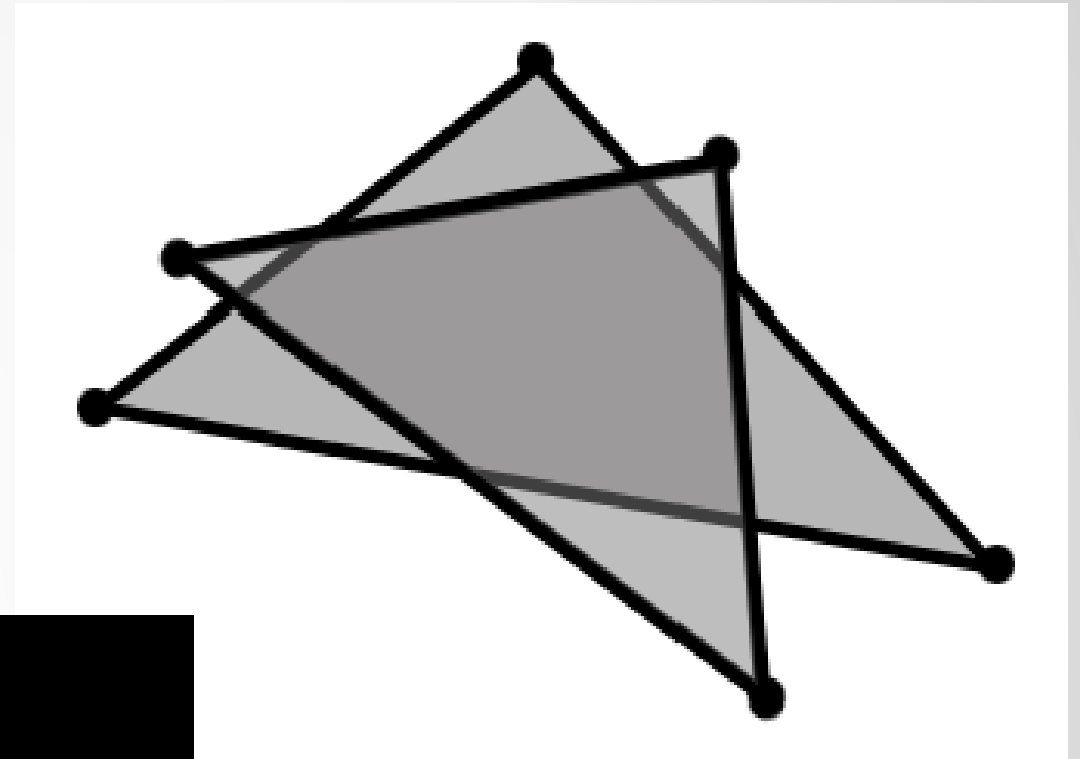
Attributes of a “good” scene:

- Correct scale
- No artifacts
- Easy to edit, retexture
- Organized



Issues with faces

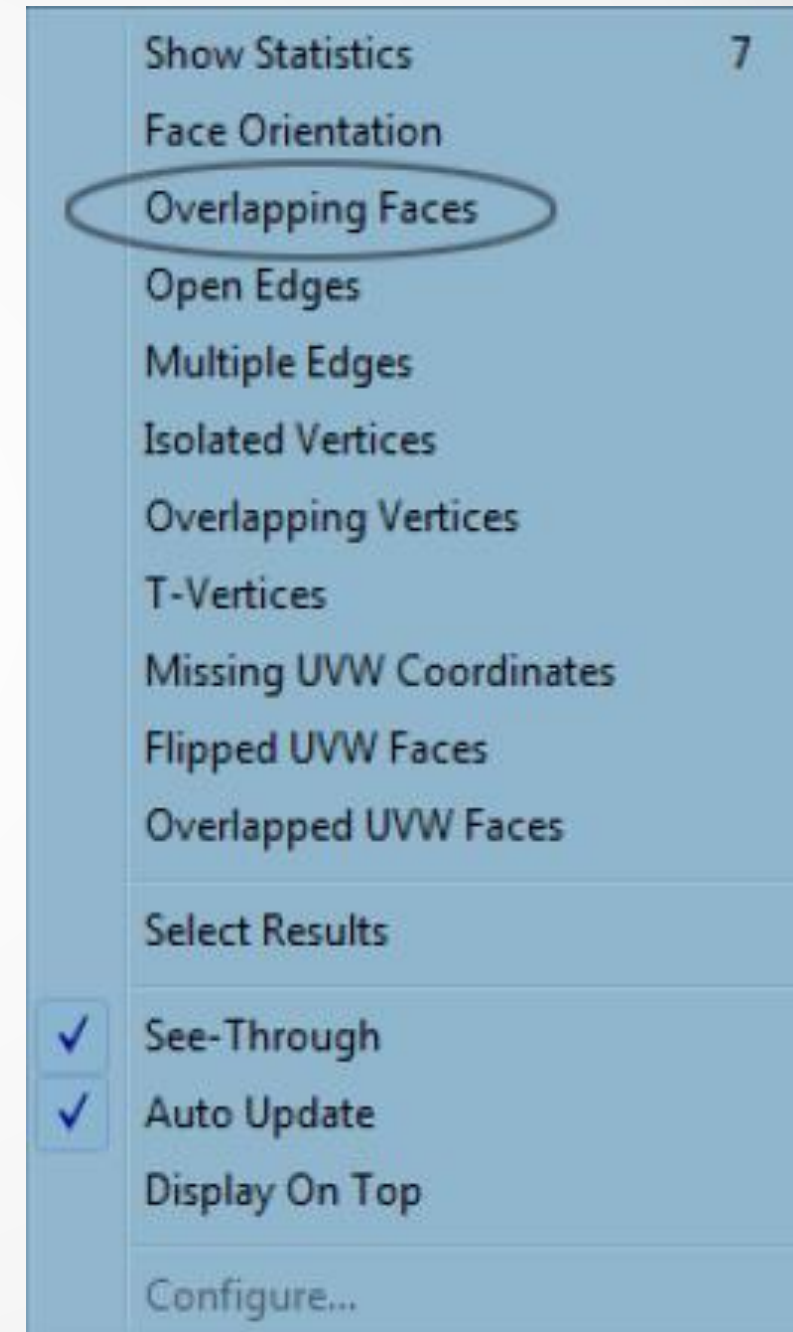
- Coincident
- Overlapping
- Flipped
- Missing



Xview: The magic bullet

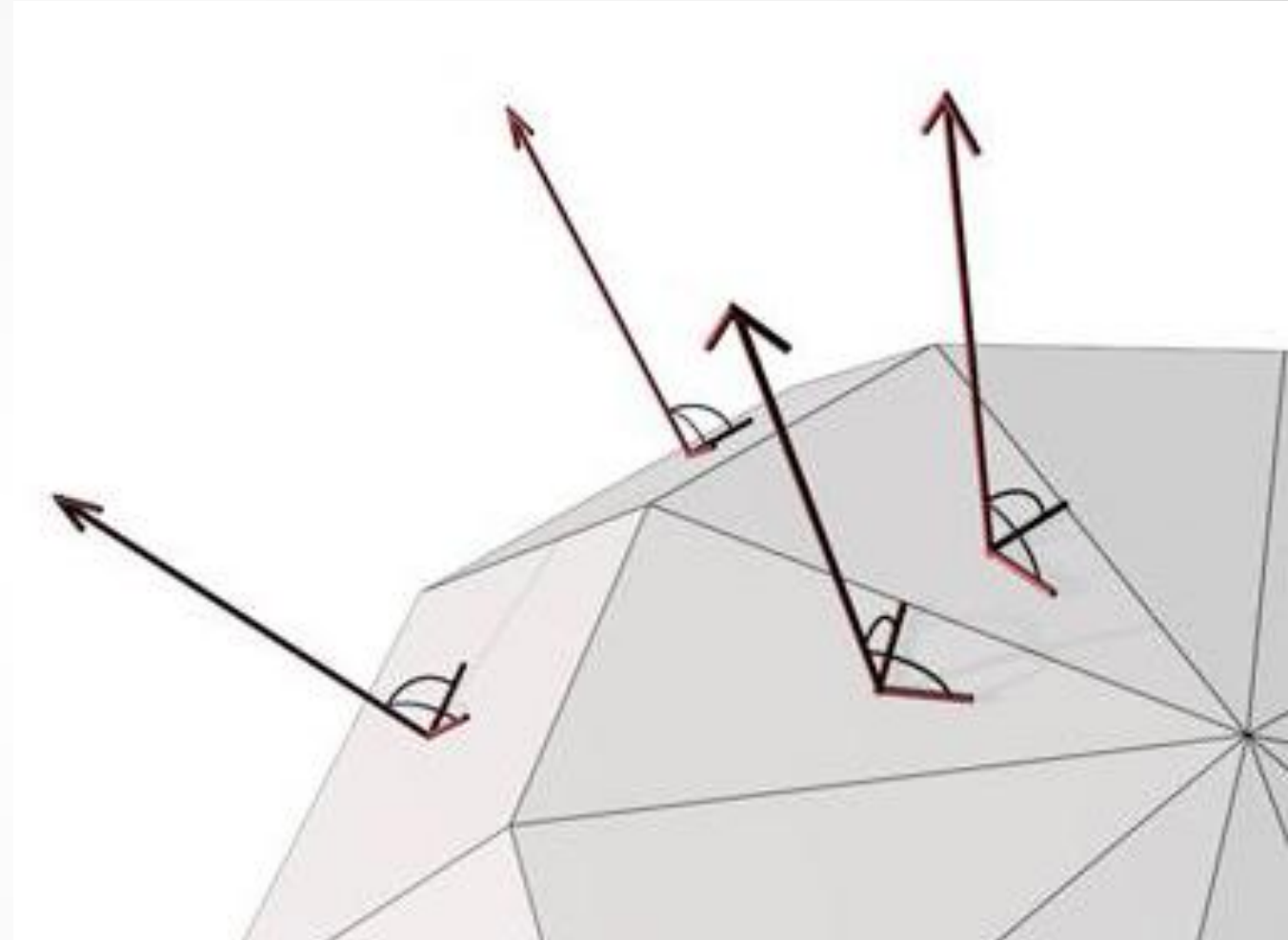
- Detects
- Selects

Views menu > XView



Normals

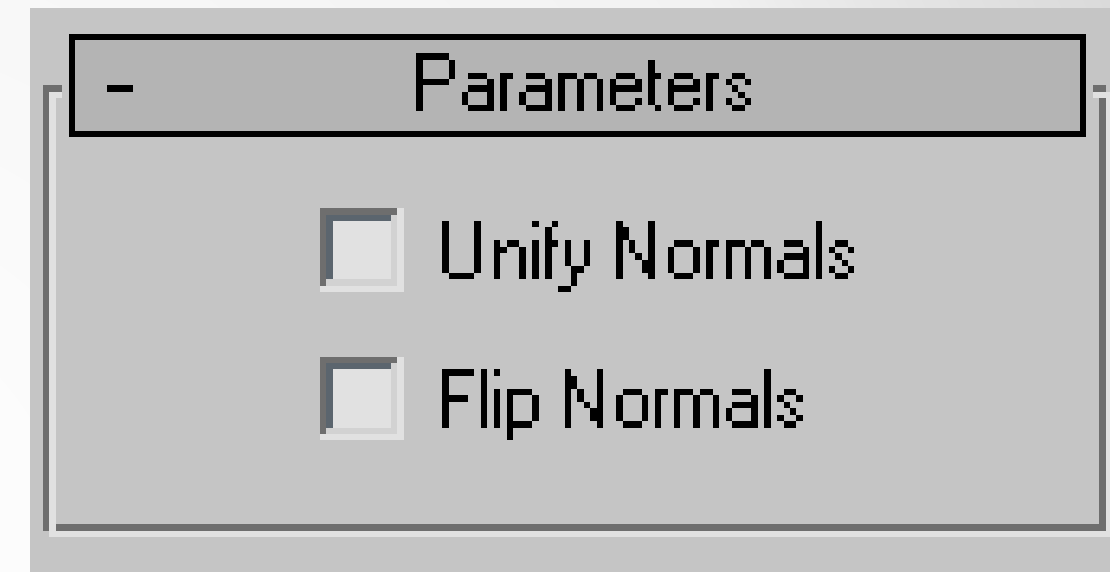
- Determines the “outside” of faces for rendering



Normal modifier: The other magic bullet

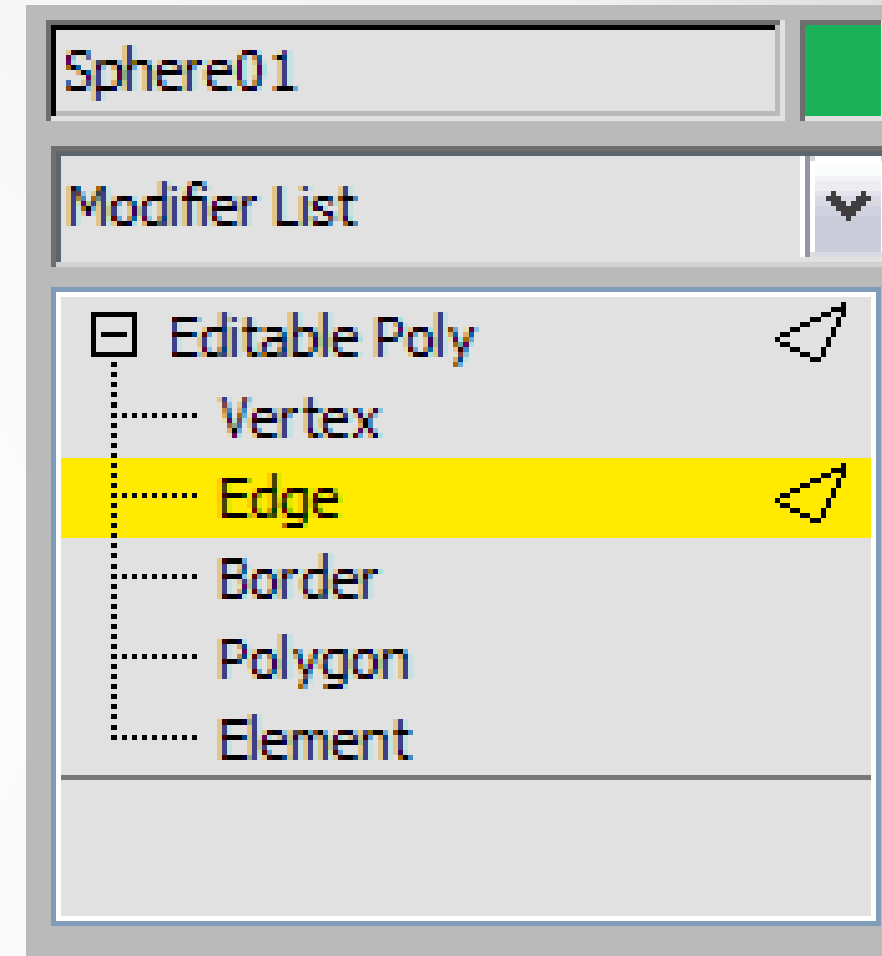
- Works on Editable Mesh only

Modify panel > Add Modifier >
Normal



Fixing Scale

- Scale objects at sub-object level only!
- Scale at object level = weird results in animation.





Topology: Not the GIS kind



Topology (*3D modeling*): Structure/flow of wireframe

Good vs. bad topology

- Good topology

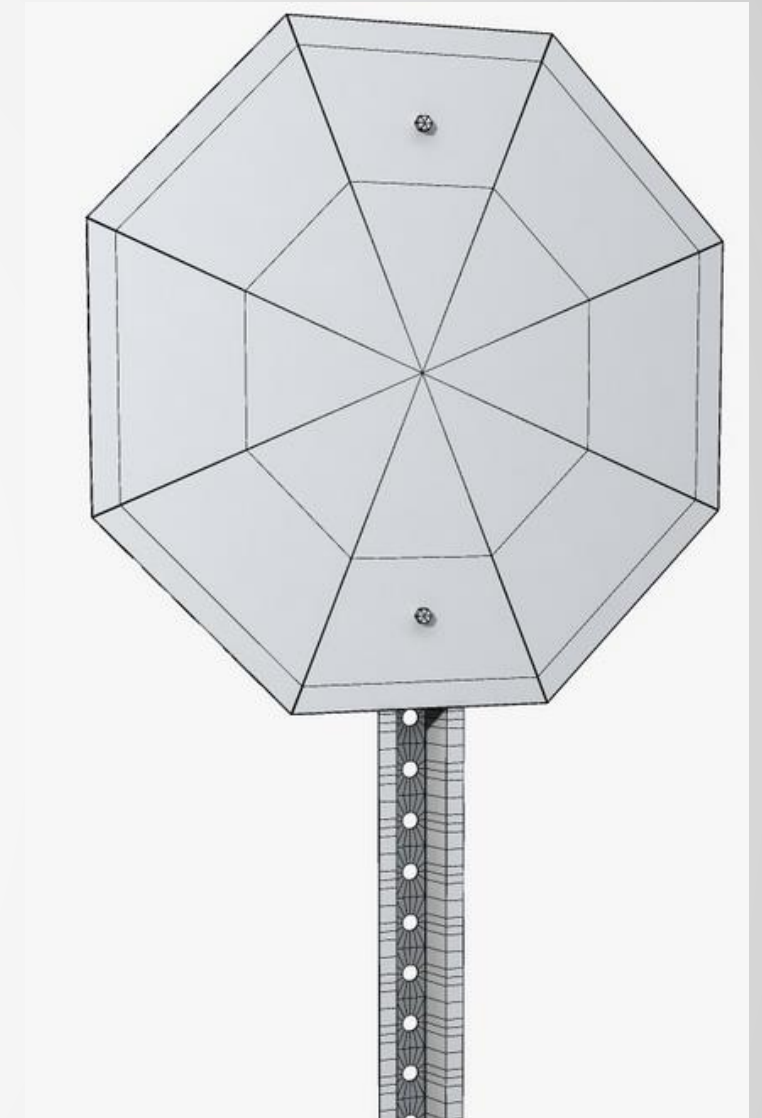
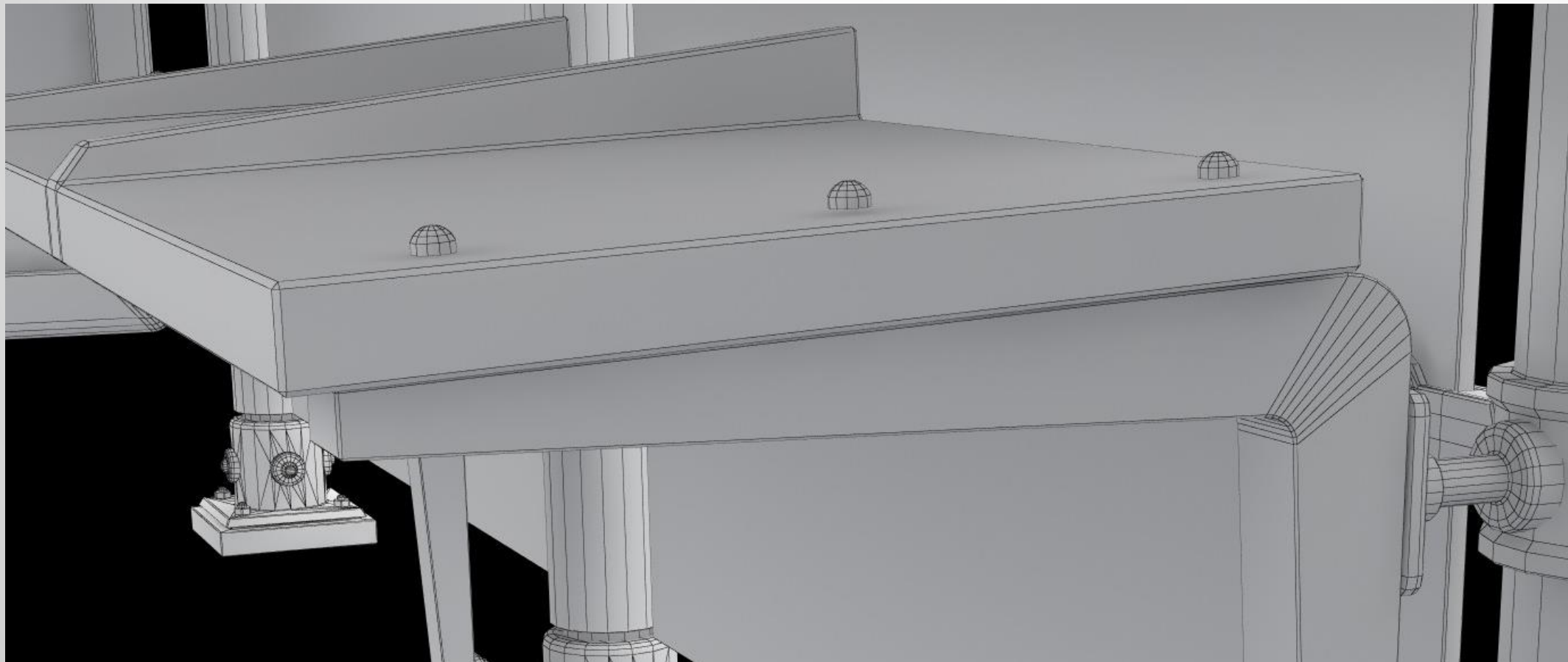
- Highlights behave as expected
- Easy to select faces/edges for editing
- Easy to retexture, lay out UVs

- Bad topology

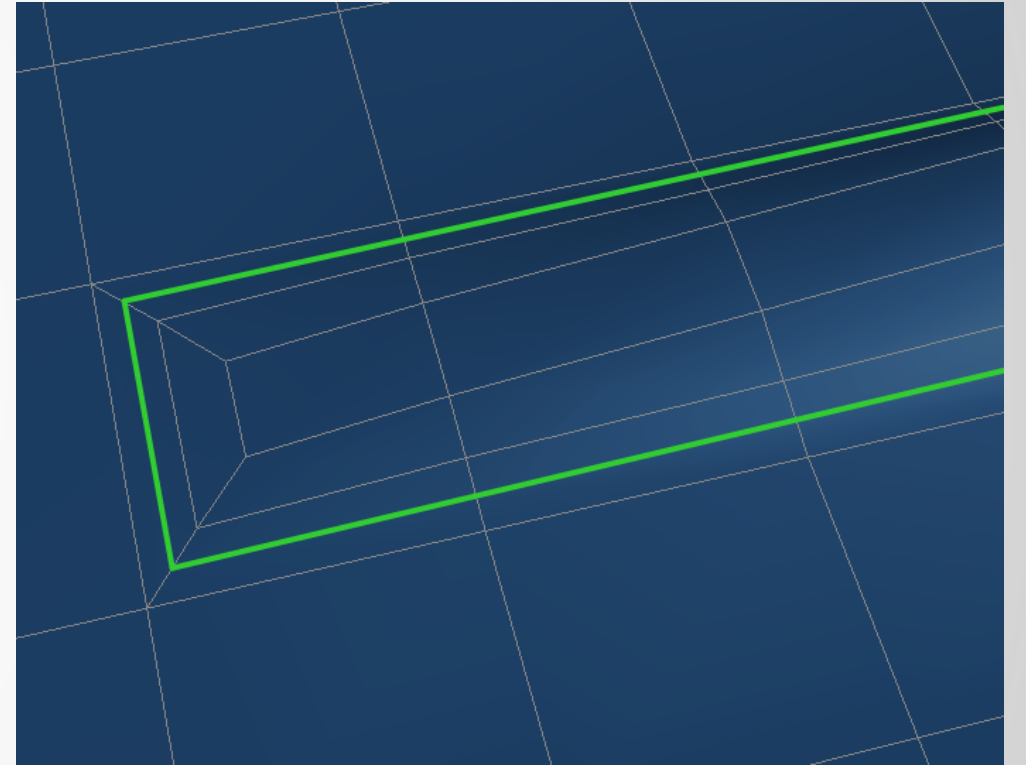
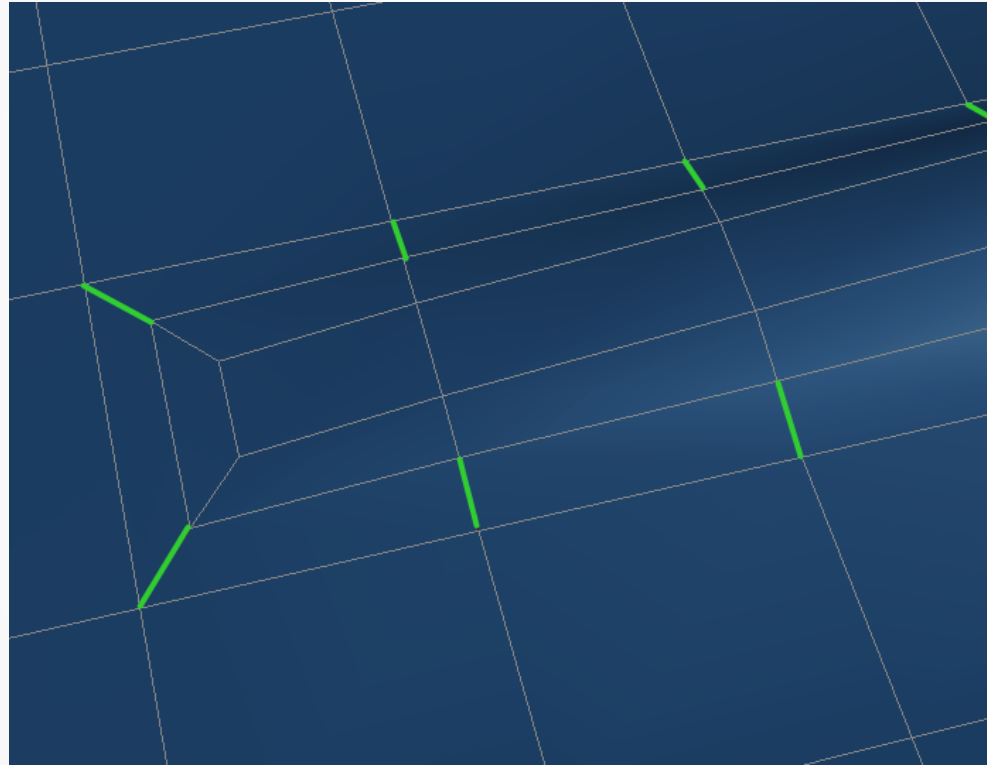
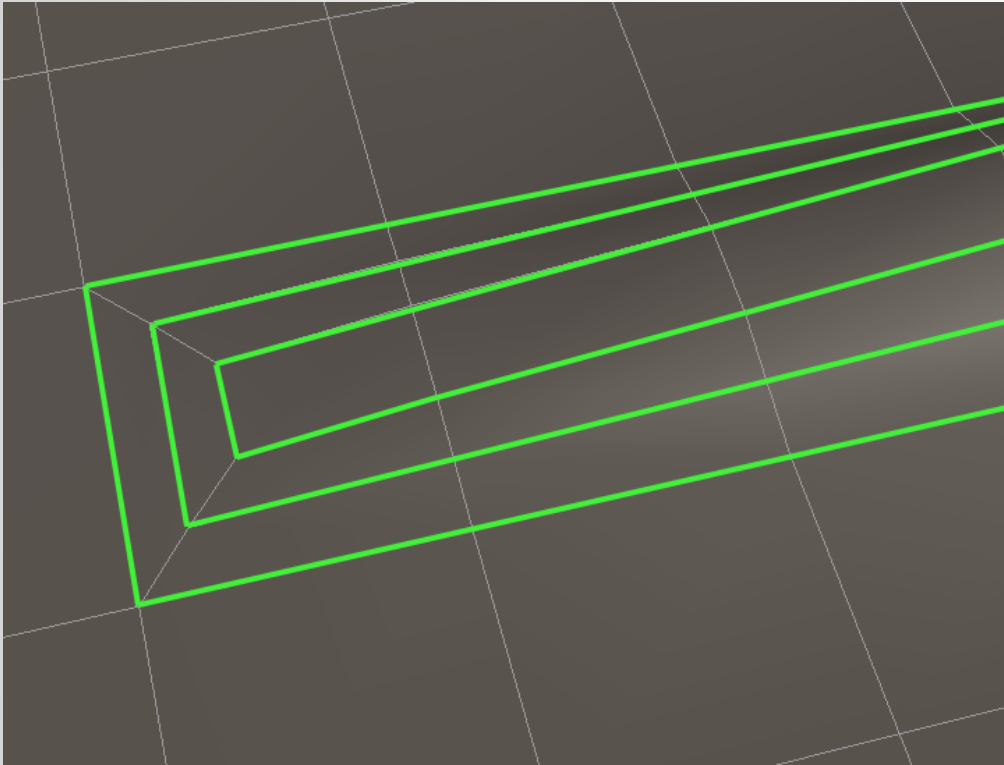
- Choppy highlights
- Difficult to edit model, textures, UVs

Good topology

- Quad polygons
- Edge loops
- Just enough detail to set the shape

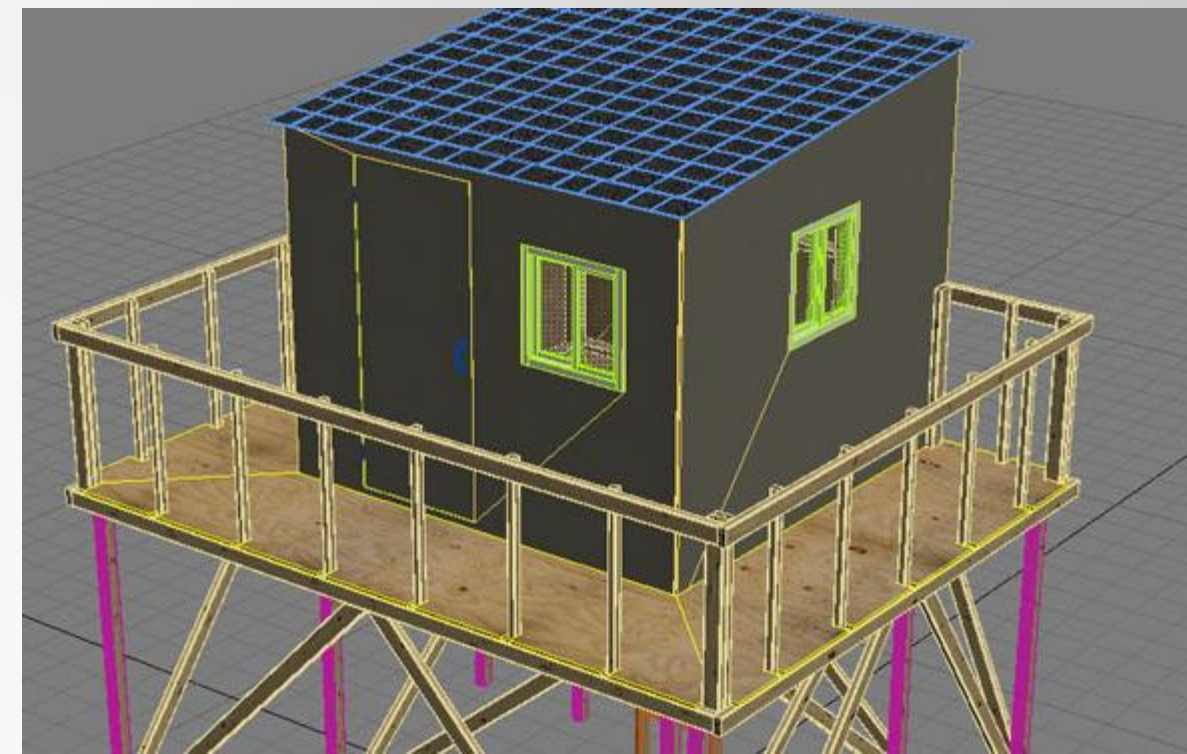
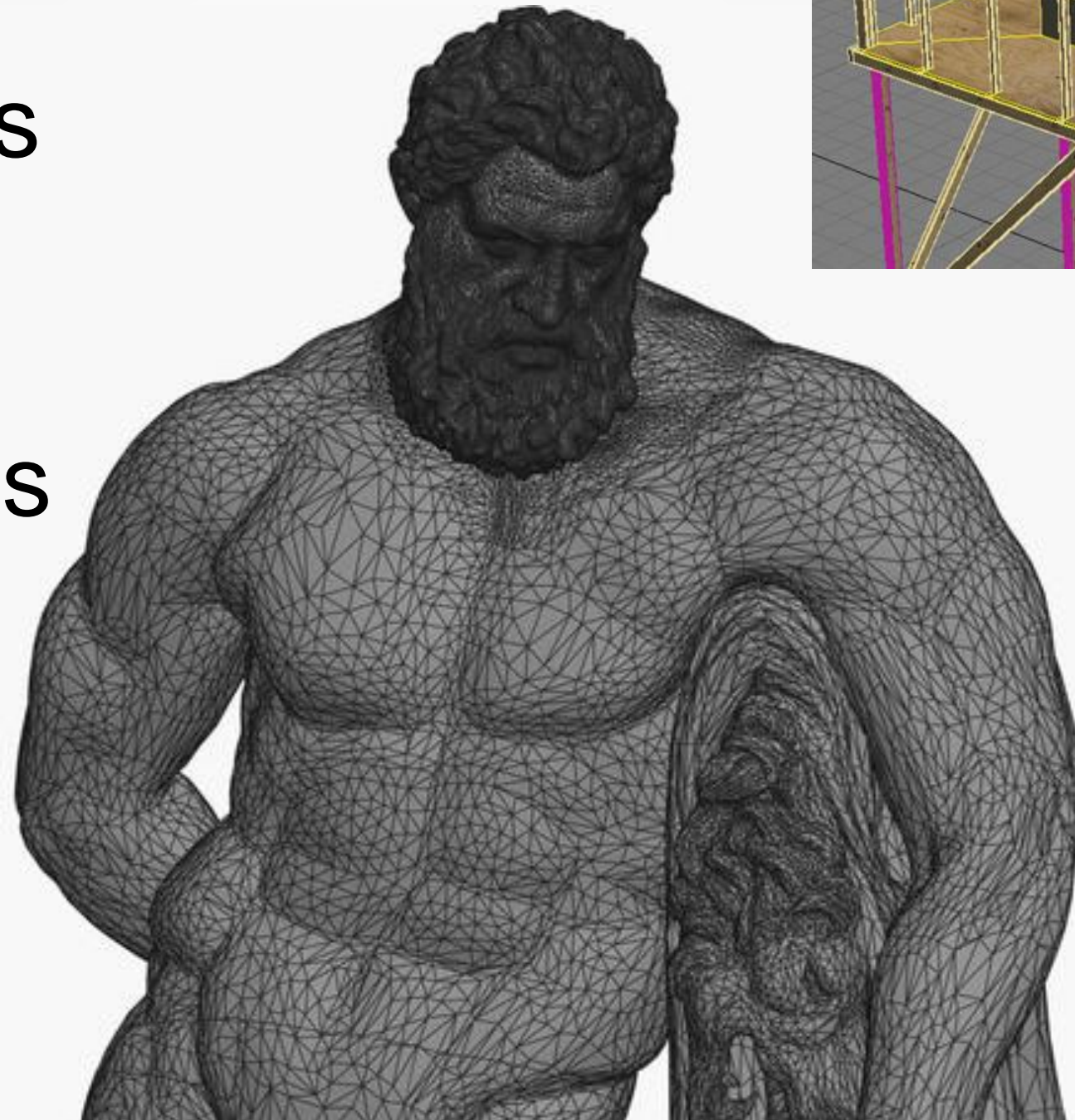


Edge loops



Bad topology

- Ngons
- Excessive triangles
- Excessive edges
- Haphazard edge arrangements



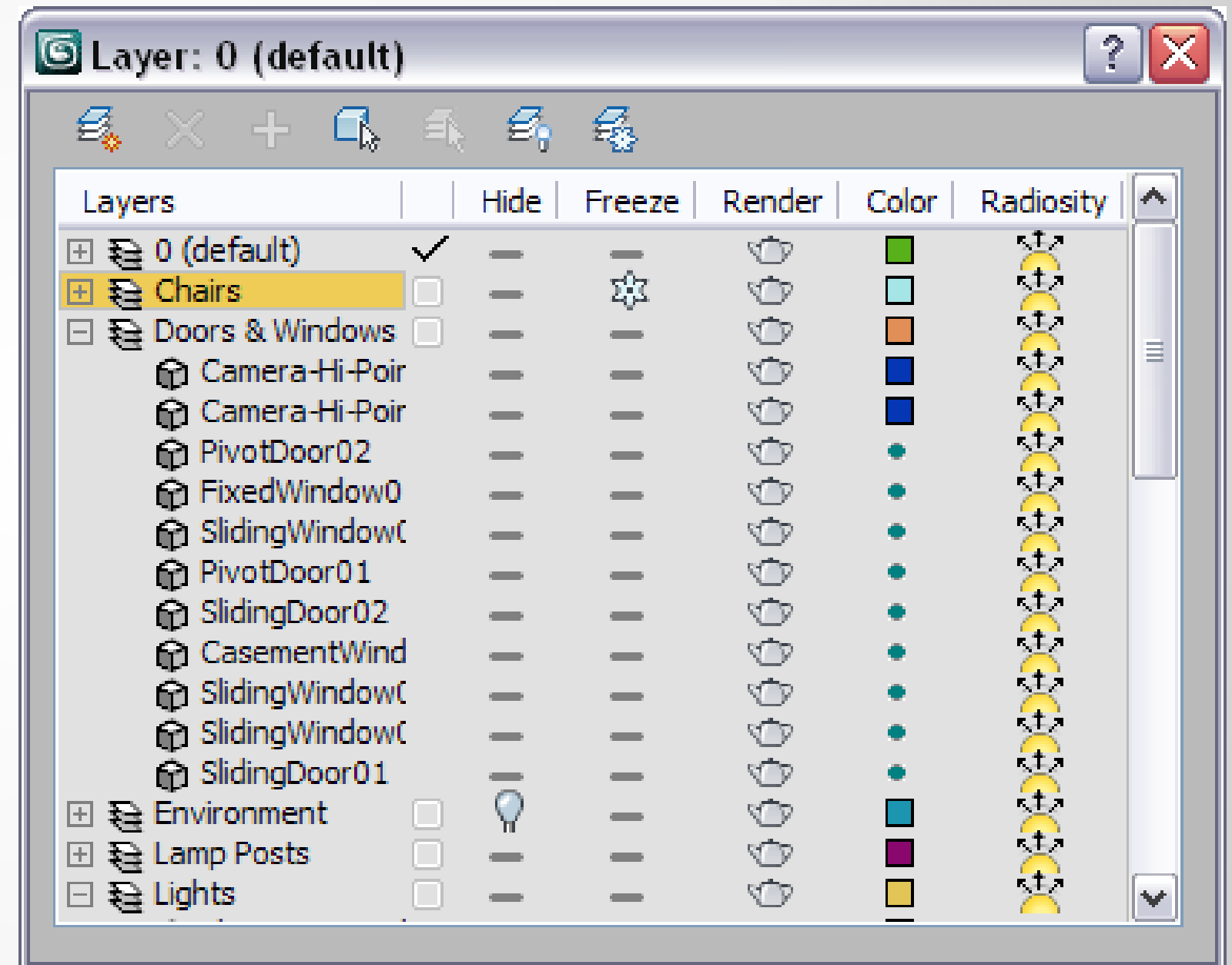
Messy scans vs. clean quads

- Retopo tools in Mudbox, Zbrush
- Retains textures and overall shape



Scene organization

- Name all objects
- Organize layers by material or object type
- Position scene near origin



CheckMate Standard

Free at TurboSquid:

- Standard specification
- Training videos and tutorials for designers
- Scripts to check topology and scene organization

TURBOSQUID Search Stock 3D Cart My Files Support Login/Join

CheckMate™ Certification

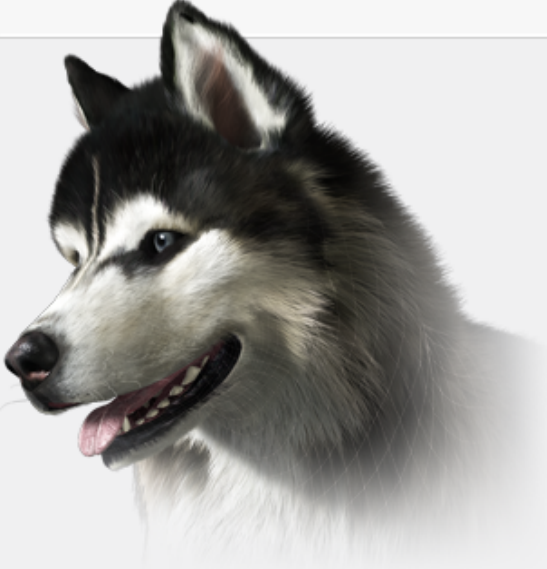
The industry's standard for 3D models

CheckMate Pro
Highest quality. [View spec](#)

CheckMate Lite
Ready and reliable. [View spec](#)

The CheckMate standard is developed with input from customers and the [CheckMate Advisory Board](#), a powerhouse group of industry professionals.

To learn more about the industry's standard, see the [CheckMate FAQ](#).



Pro Samples

[see models](#)

\$49
max

\$249
ma

\$199
max

Lite Samples

[see models](#)

\$299
max

\$59
max

\$299
max

www.turbosquid.com/CheckMate

AUTODESK UNIVERSITY 2013

AUTODESK®

