



## AUTODESK® URBAN CANVAS

*Broad distribution anticipated late 2016*

Create and communicate urban plans with easy to use design and analytical tools.

**Help us shape the future of planning.**

Participate in research and influence product development.



To sign up, email us at

**[urban.canvas.support@autodesk.com](mailto:urban.canvas.support@autodesk.com)**

**Build, maintain, and analyze a shared database** of parcels, buildings, zoning, and development projects.

**Collaborate** by storing shared data and proposals in the cloud and coordinate plans across cities and counties in a region.

**Understand plans and projects in context** from a comprehensive regional view down to corridors, neighborhoods, and individual sites.

**Study spatial patterns in data**, whether for the world as it is or the world as it might be.

**Choose from a wide palette of visual styles** that range from diagrammatic to more detailed, helping you communicate the right information at the right time.

**Edit geometry and attributes** in the same integrated platform.

**Quickly create data-driven 3D models** from zoning, land use, and development type information.

**Inform planning decisions** at the critical formative stages with integrated analytical tools.

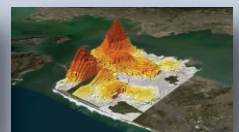
**Assess designed or simulated alternatives** for zoning regulations, design guidelines, and specific development proposals in the same system.

**Combine Urban Canvas with a range of data analysis and simulation tools**, such as our open source urban data science toolkit ([udst.org](http://udst.org)) for analyses ranging from walkability metrics to predictive models of property values.

**Communicate project phasing and alternative sets of proposals** with intuitive timeline and scenario tools.

For more information, check out our online help, [help.autodesk.com/view/URBNCNV/2016/ENU/](http://help.autodesk.com/view/URBNCNV/2016/ENU/)

and product overview video: <http://goo.gl/h0DsZv>



In this document, and during the course of the associated presentation, we may make statements regarding future events and/or statements regarding planned or future development efforts for our existing or new products and services. We wish to caution you that such statements reflect our current expectations, estimates and assumptions based on factors currently known to us and that actual events or results could differ materially. Also, these statements are not intended to be a promise or guarantee of future delivery of products, services or features but merely reflect our current plans, which may change. Purchasing decisions should not be made based upon reliance on these statements. The statements made in this document and associated presentation are being made as of the time and date of their creation. We do not assume any obligation to update any statements we make to reflect events that occur or circumstances that exist after the date of this presentation. NOVEMBER 2015