



# Scan to BIM to Field

Andrew Evans

Software Application Specialist  
@TopconImaging





Seamlessly Connecting the Office and the Field.

## Class summary

- Why model as-built conditions when you can work directly with a high-resolution point cloud?
- In this very hands-on class we will Layout the foundations for a new addition to our Autodesk University (AU) classroom using a remarkably easy, cloud-enabled workflow.

# Key learning objectives

At the end of this class, you will be able to:

- Learn how to import point cloud scans into Navisworks
- Learn how to place points in the model using Point Layout
- Learn how to upload and share the model and points with the Field Team using BIM 360 Glue
- Learn how to layout and verify points in the field using the BIM 360 Layout iPad application connected to a robotic total station

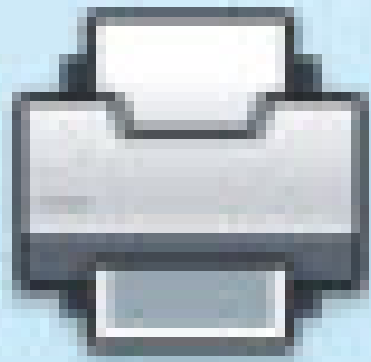
Andrew Evans  
Topcon  
Software Application Specialist



Michael Moran  
Autodesk  
Consultant



# Scan to BIM to Field – Why?



Print





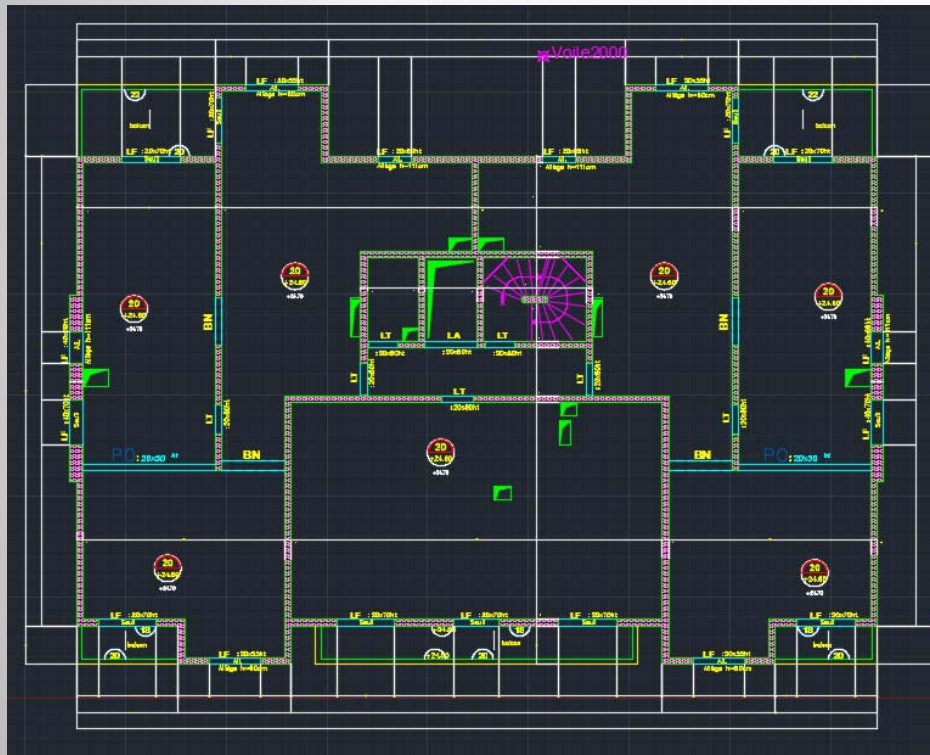












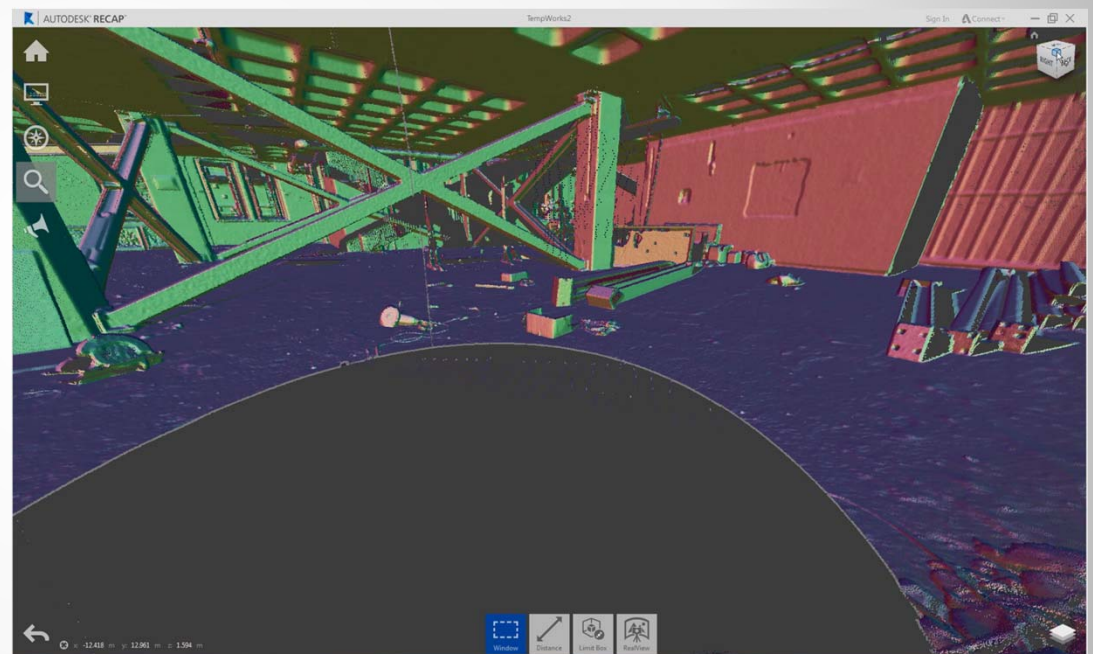
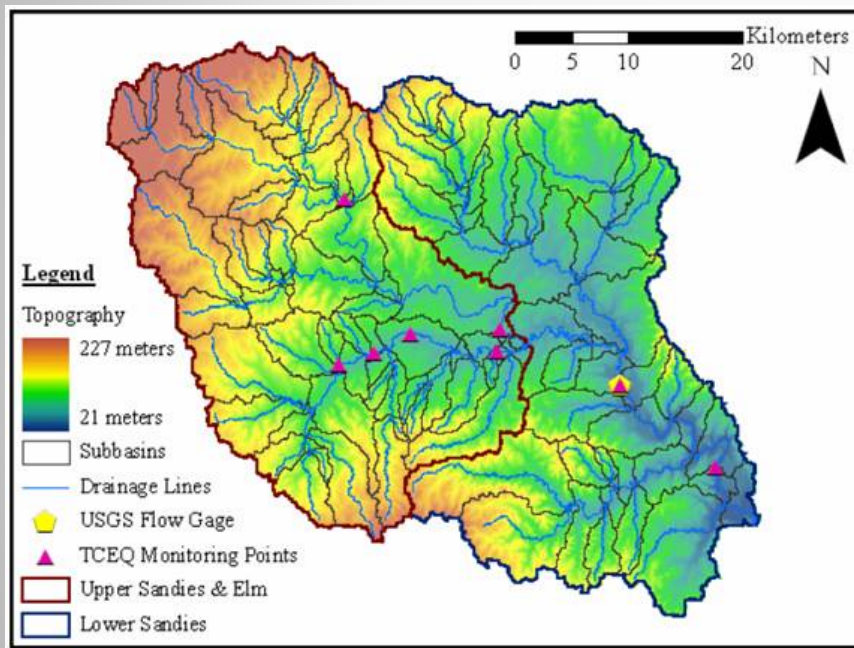
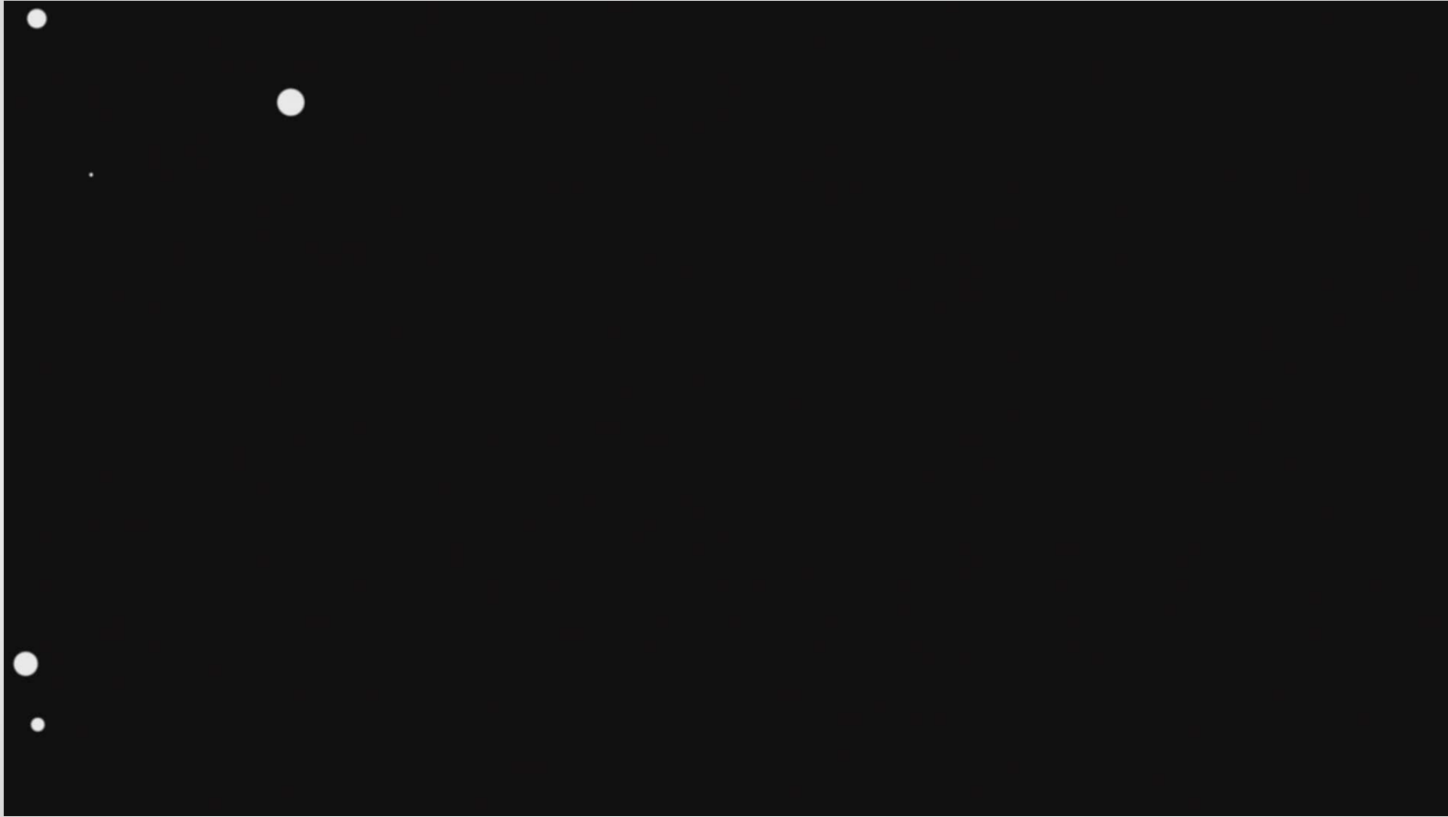




Image courtesy of PCL Construction



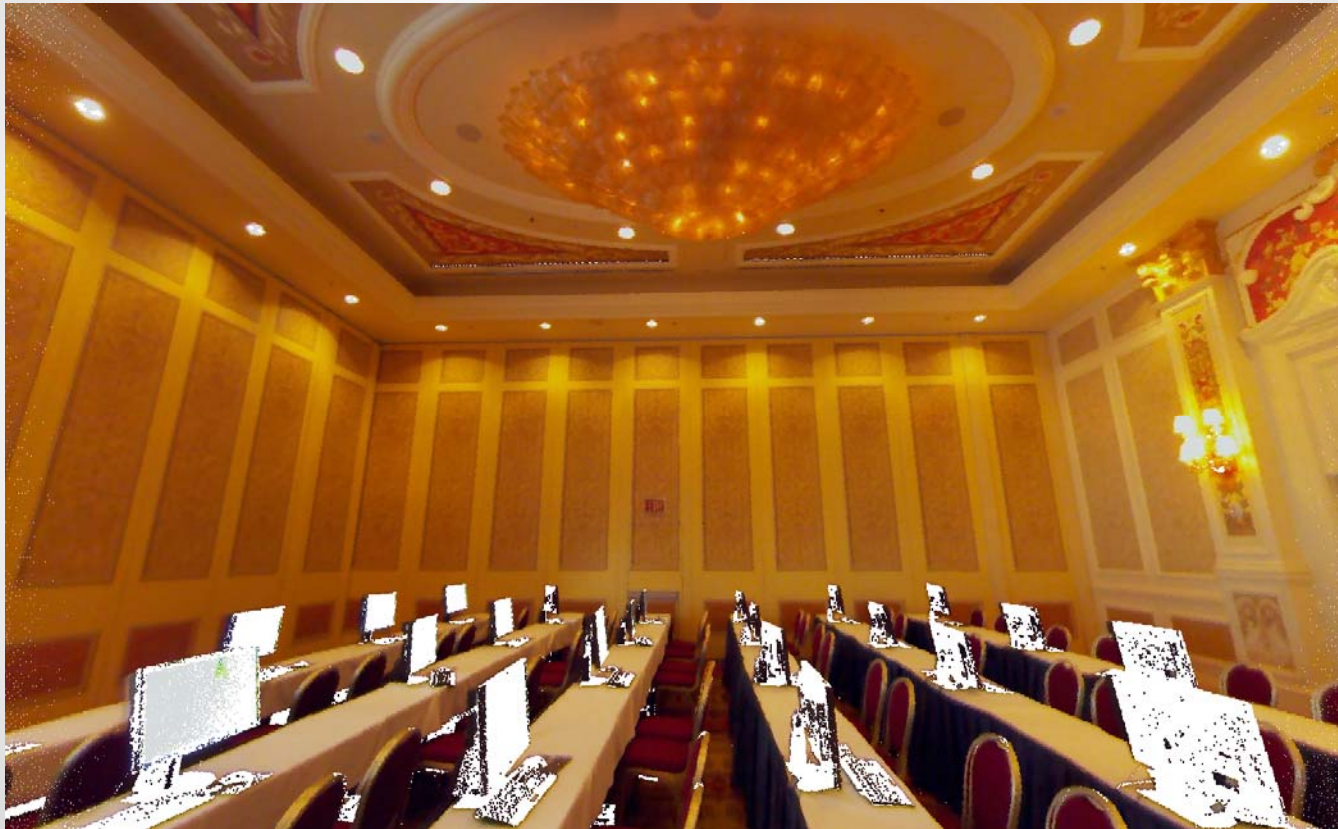




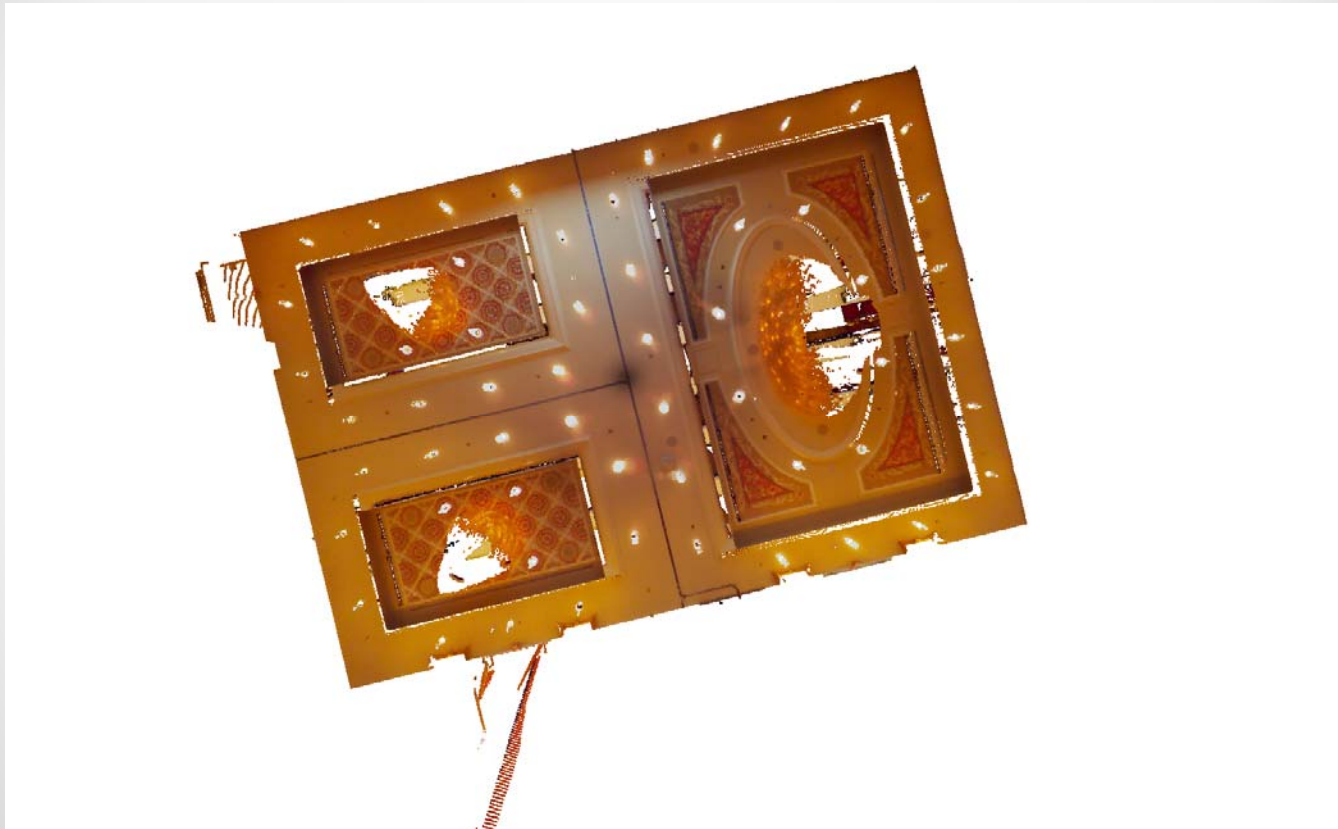


# Objective 1: Working with Point clouds

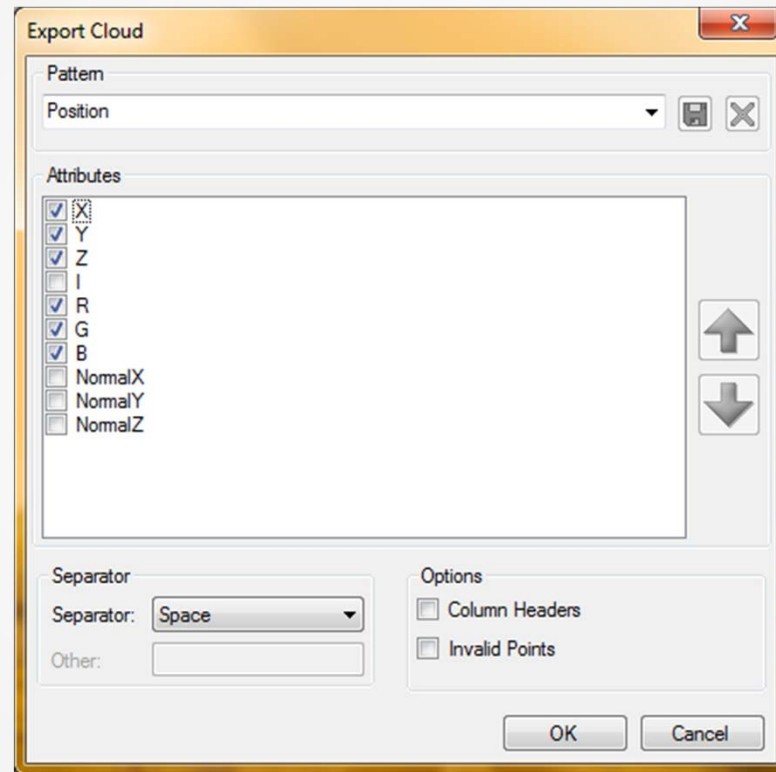
# Prepare the point cloud data



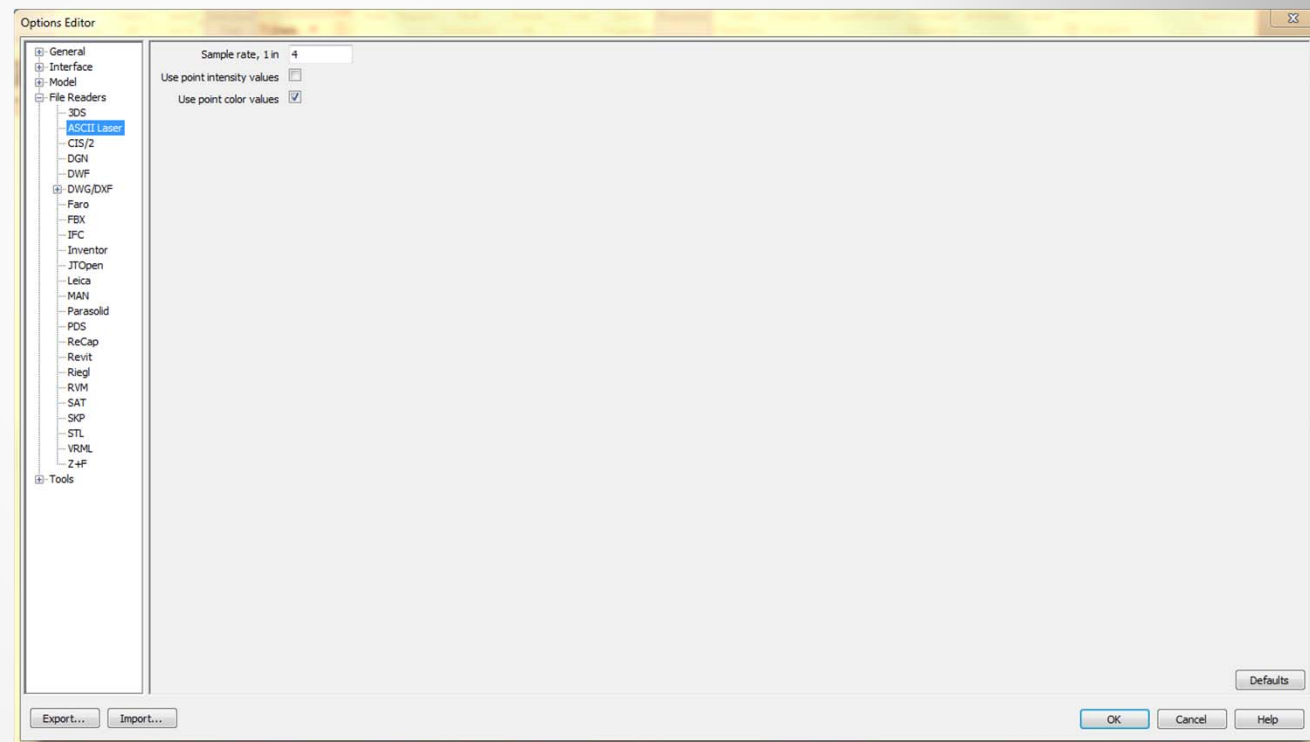
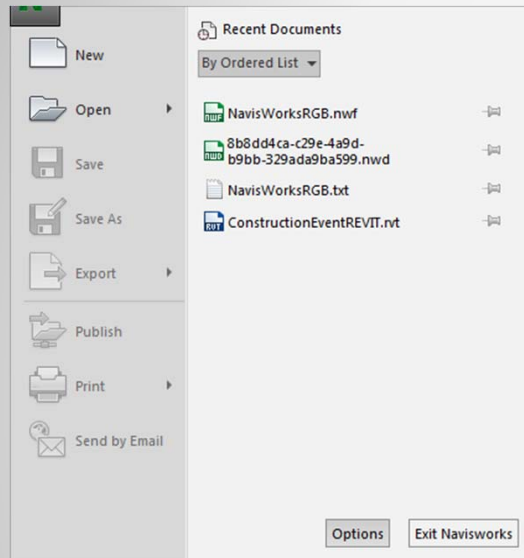
# Prepare the point cloud data



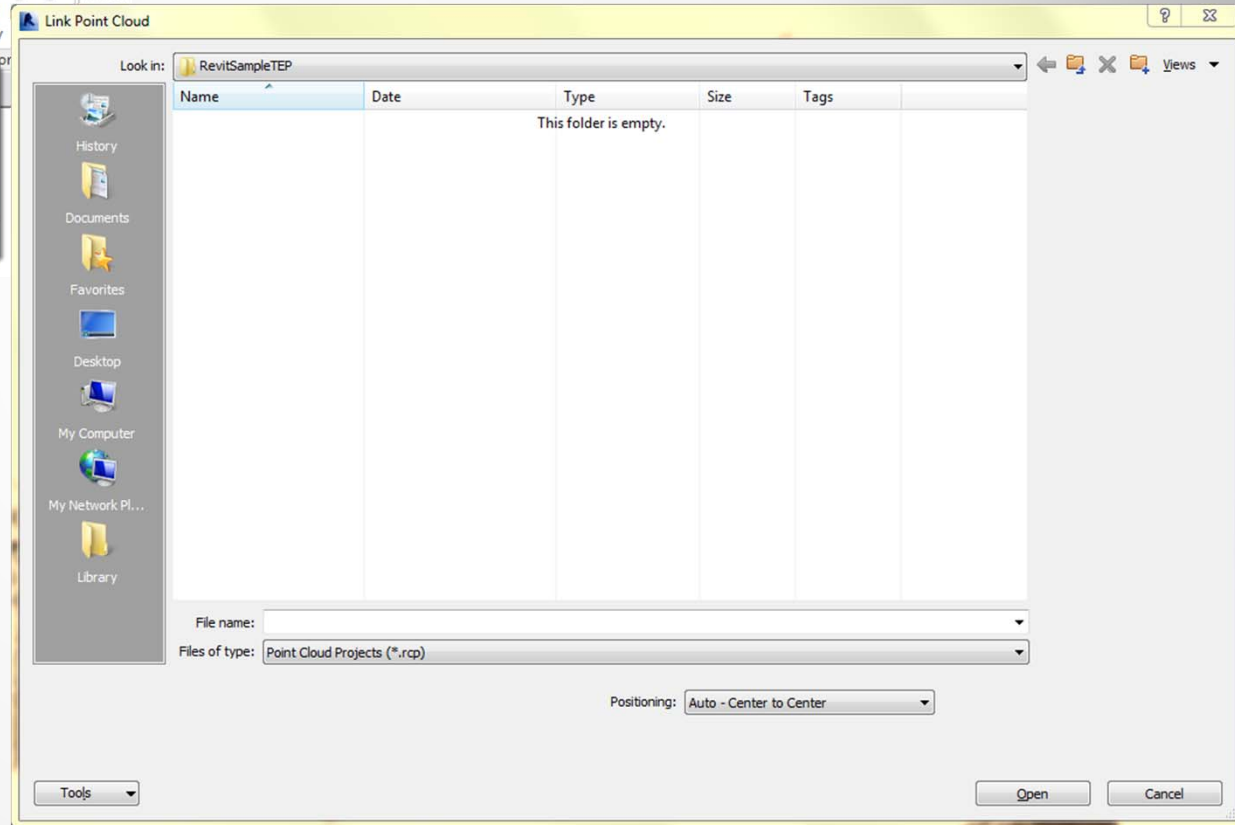
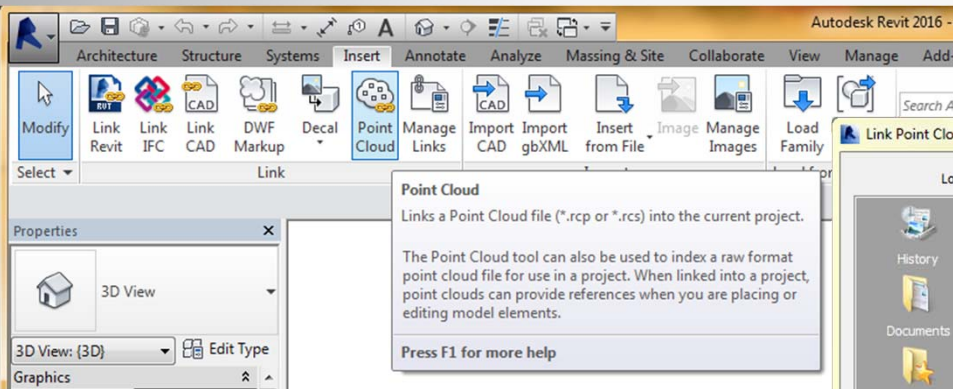
# Export Options



# Import to Navisworks



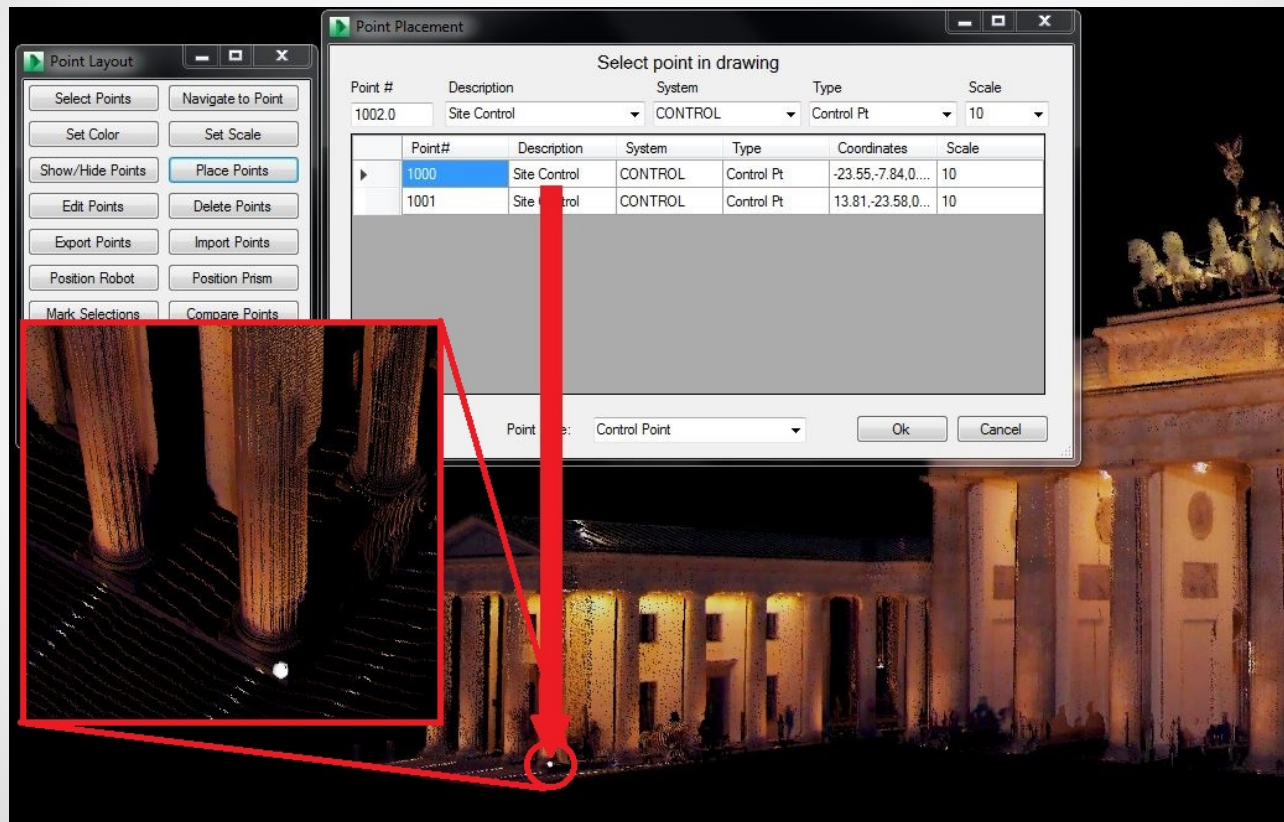
# Import to Revit



## Objective 2: Placing Points with APL

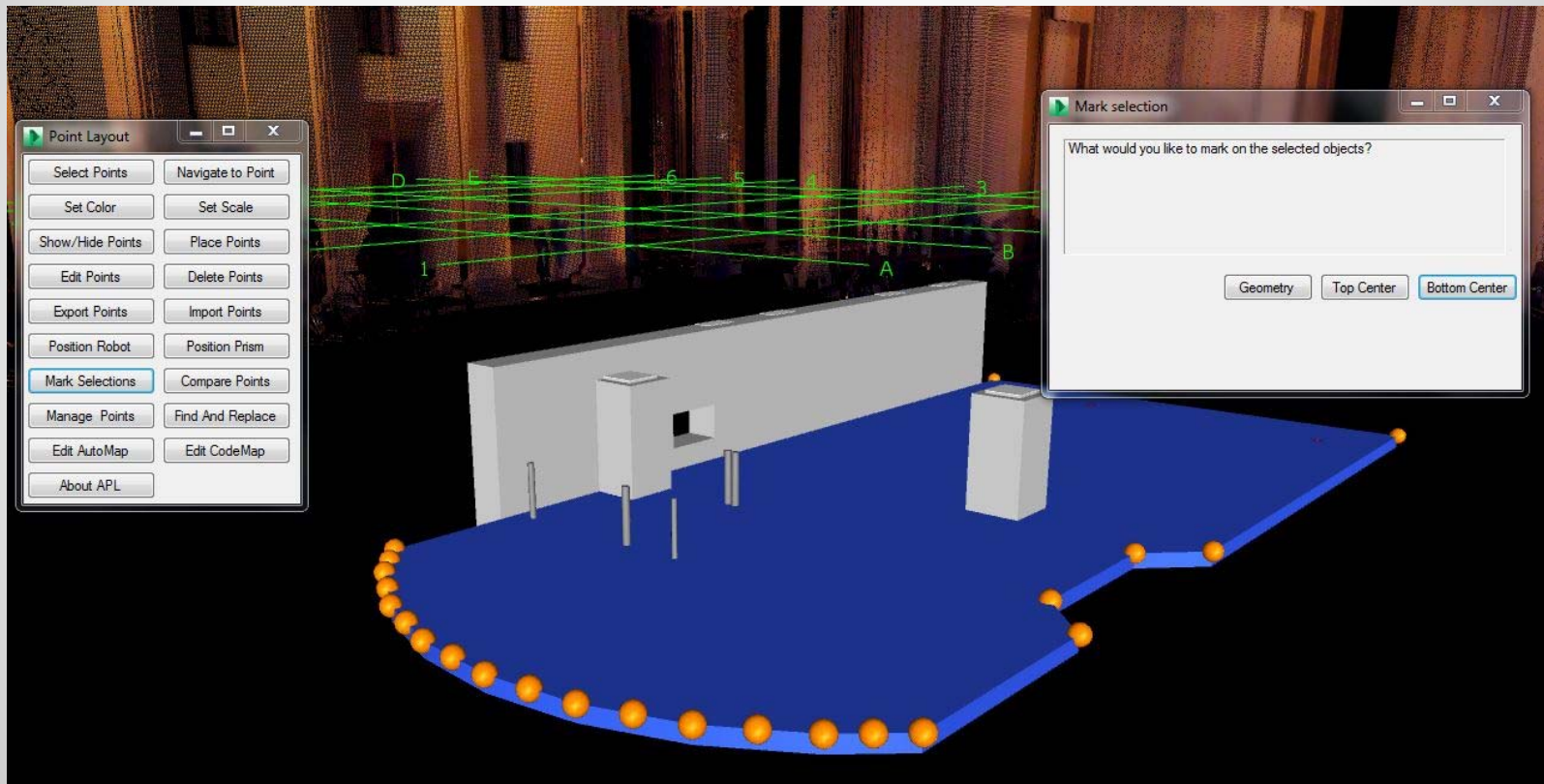


# Placing Points on the point cloud



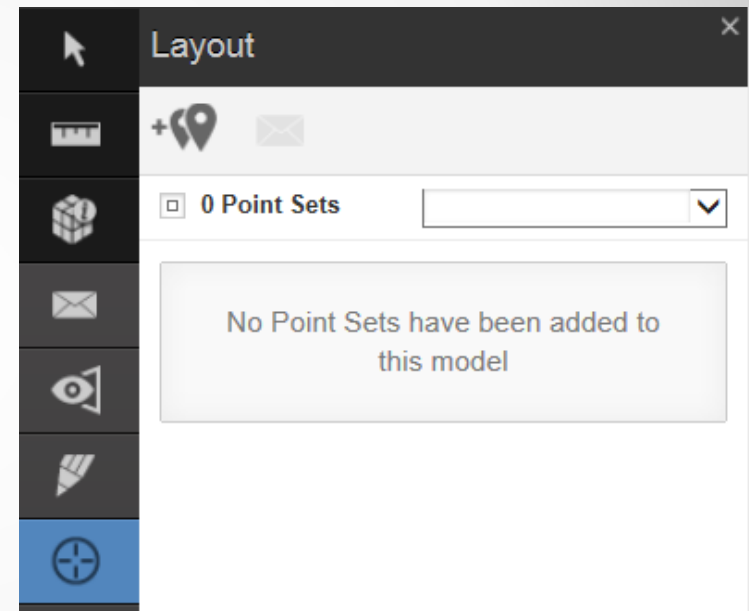
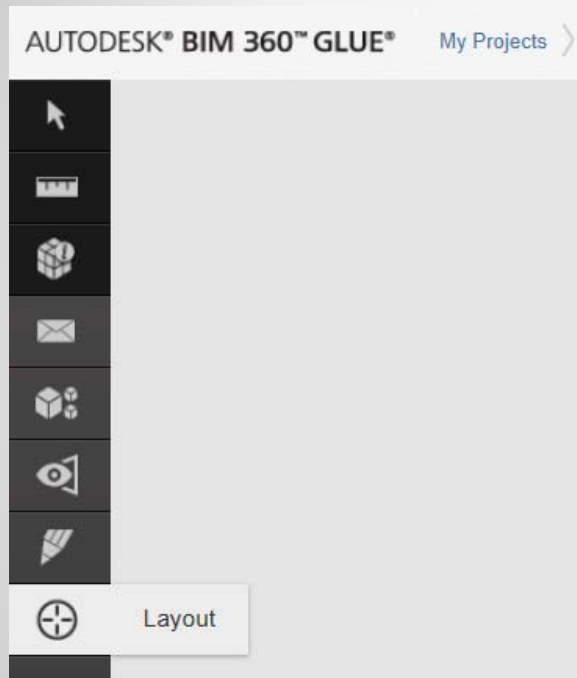


# Placing points on the model



## Objective 3: Share with BIM360 Glue

# Glue the model

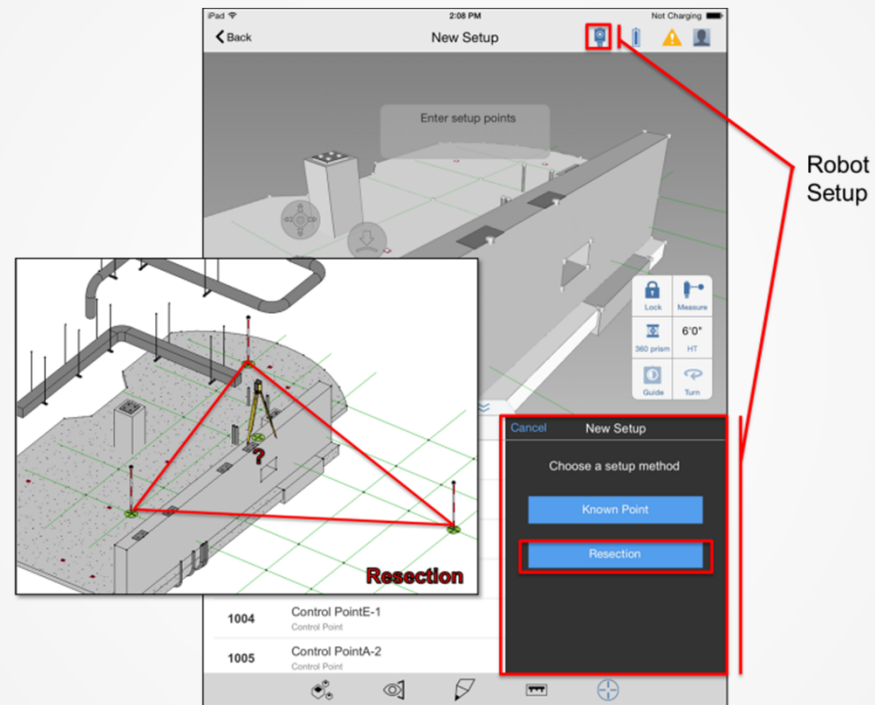


# Objective 4: Layout with BIM360 Layout

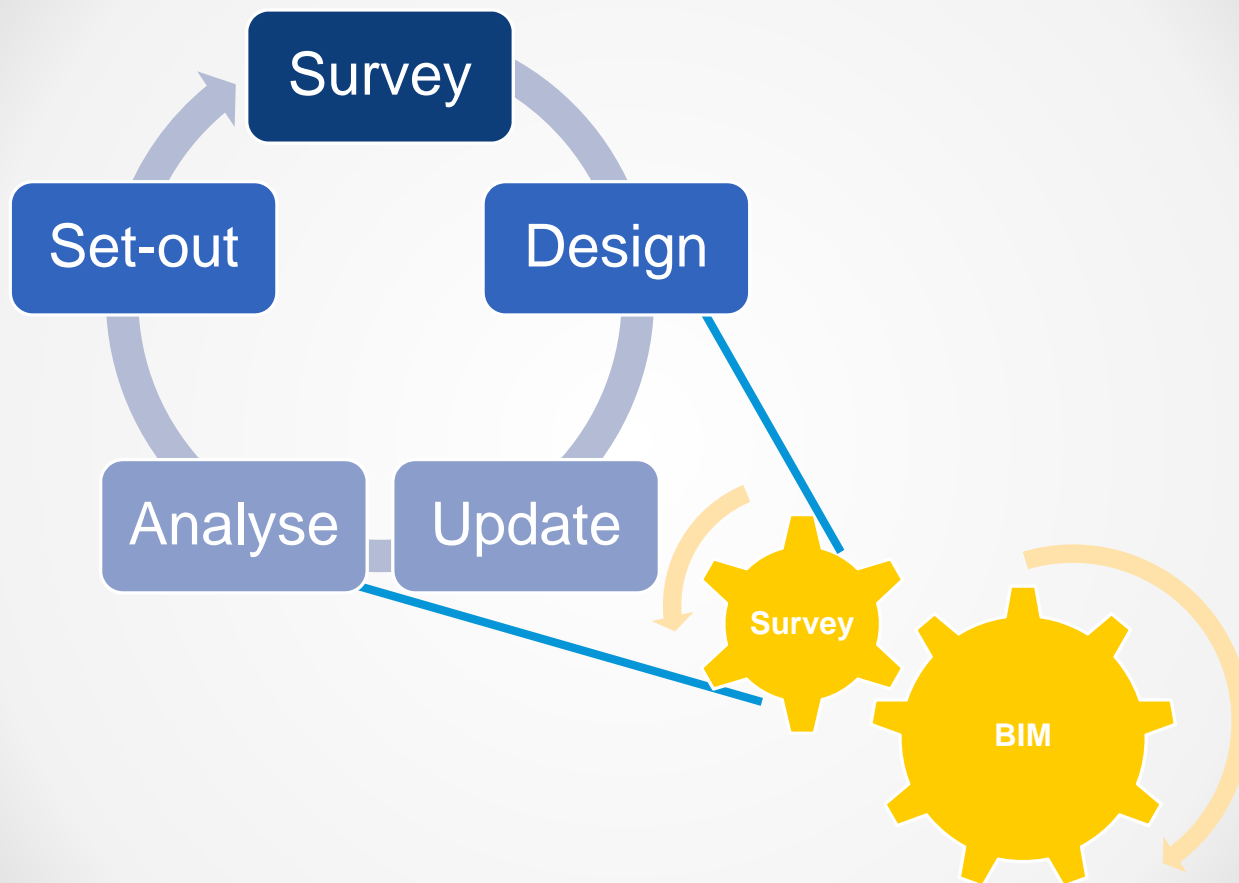
# Connect to the Robot



# Orientate



# Objective X: Construction Feedback





# Be heard! Provide AU session feedback.

- Via the Survey Stations, email or mobile device.
- AU 2016 passes awarded daily!
- Give your feedback after each session.
- Give instructors feedback in real-time.



# Forget to take notes? No problem!

After AU visit:

**AutodeskUniversity.com**

Click on **My AU** to find:

- Class Recordings
- Presentations
- Handouts

All of your sessions will be there  
to enjoy again and again.



# More Questions? Visit the Topcon Booth

- Seek answers to all of your Reality Capture technical product questions by visiting the **Topcon Booth** in the Exhibit Hall.
- **Tuesday - December 1, 2015**
  - 12:00 p.m. - 3:00 p.m.
  - 6:00 p.m. - 9:00 p.m.
- **Wednesday - December 2, 2015**
  - 11:30 a.m. - 3:00 p.m.
  - 6:00 p.m. - 9:00 p.m.
- **Thursday - December 3, 2015**
  - 11:30 a.m. - 3:00 p.m.





Seamlessly Connecting the Office and the Field.

