



Practical Strategies for a Successful Enterprise BIM 360 Deployment

Jon Burke, DBIA, LEED AP
Regional Support Manager
Swinerton Builders

Key learning objectives

At the end of this class, you will be able to:

- Make better decisions about your own implementation
- Learn from our successes and failures

Agenda

- Background
- Our Roadmap
- Strategy
- Next Steps
- Questions

Background

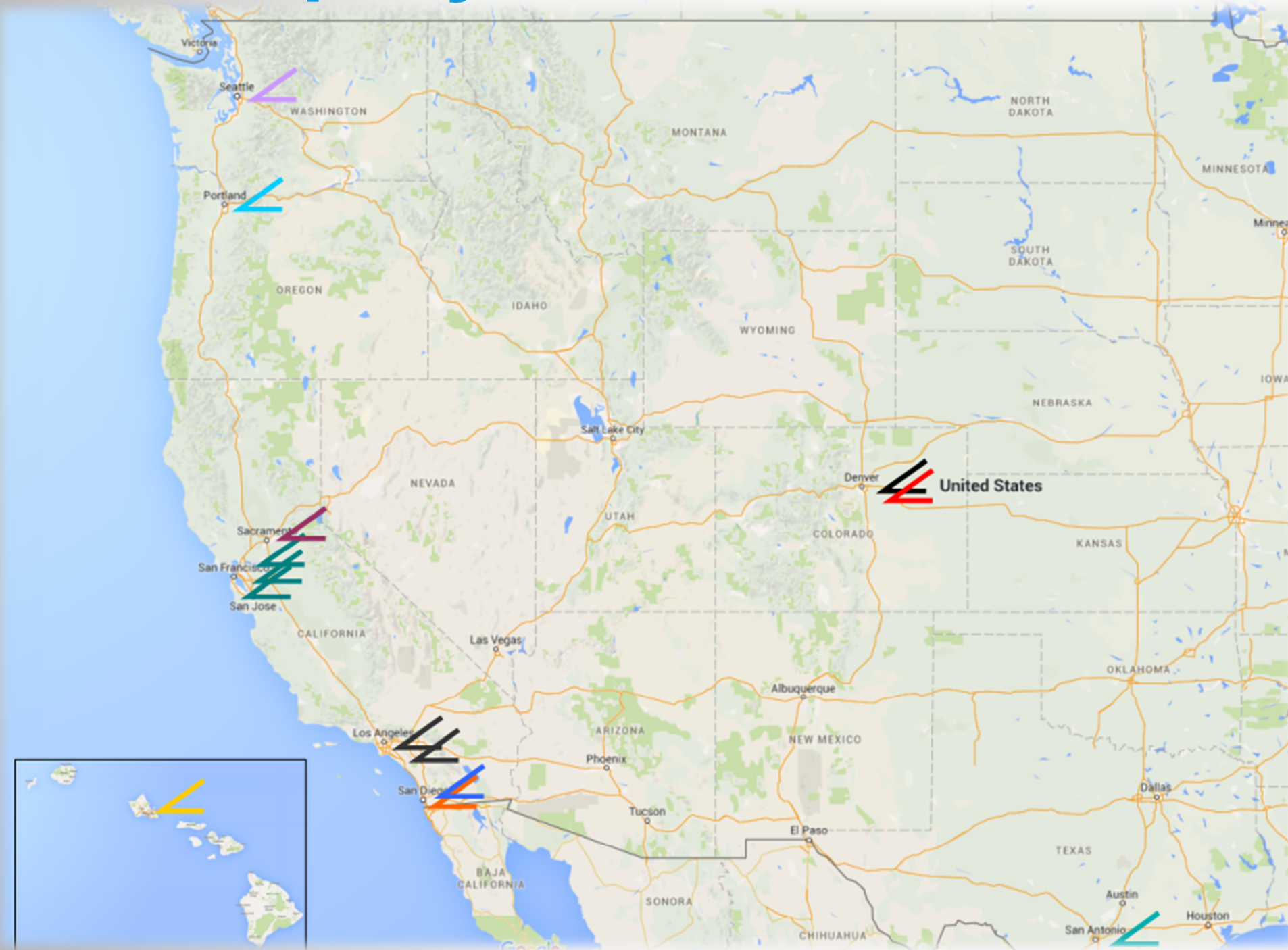
Background

- **Company: Swinerton Builders**
- \$3 billion in revenue / year
- 13 operating divisions
- 100% employee owned company
- Established in 1888
- Each division has unique culture
- Only essential top down mandates
- Some self-perform – Concrete, carpentry, masonry



Background

■ Company: Swinerton Builders



Background

- Enterprise roll out BIM 360 product line



BIM 360 Docs



BIM 360 Glue



BIM 360 Layout



BIM 360 Field



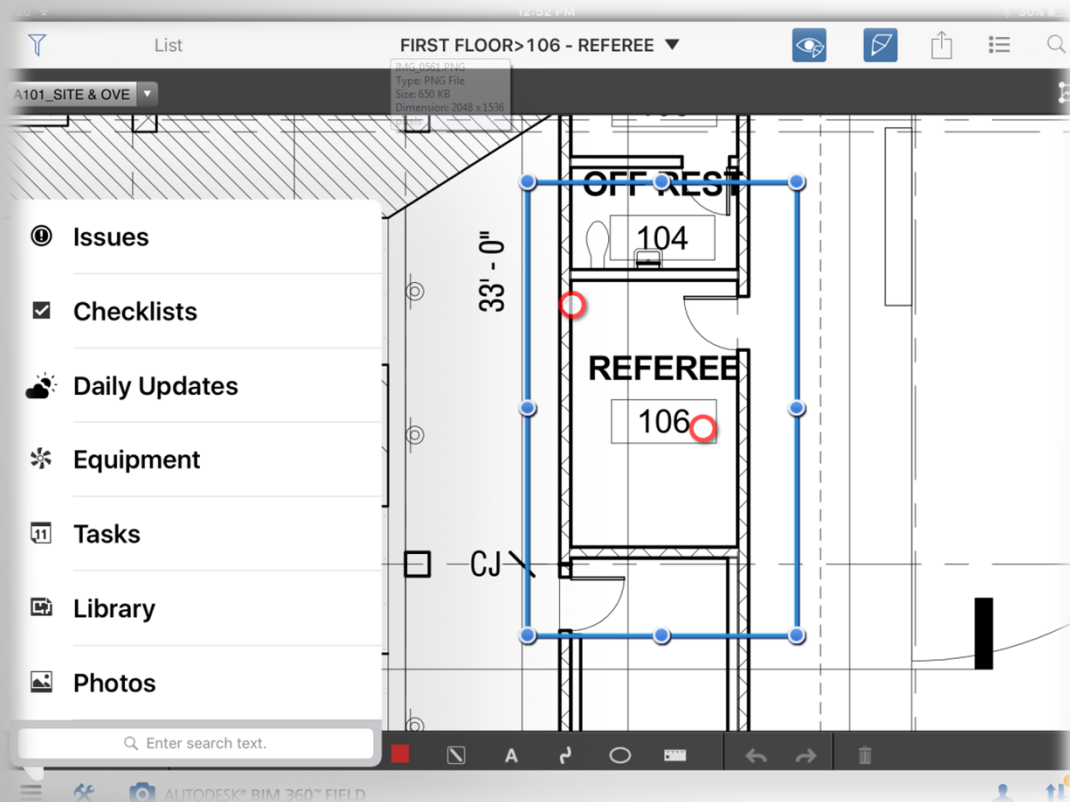
Building Ops



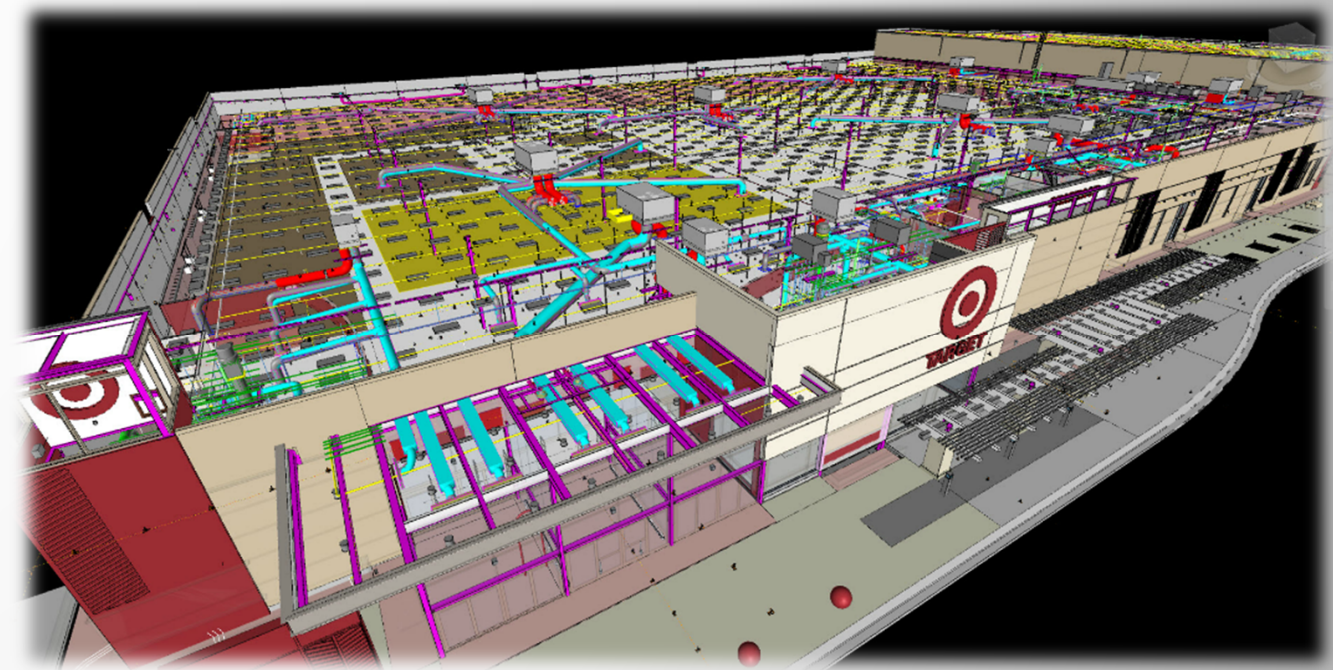
BIM 360 Plan

Survey

- Who in the room has used BIM 360 Field & BIM 360 Glue?

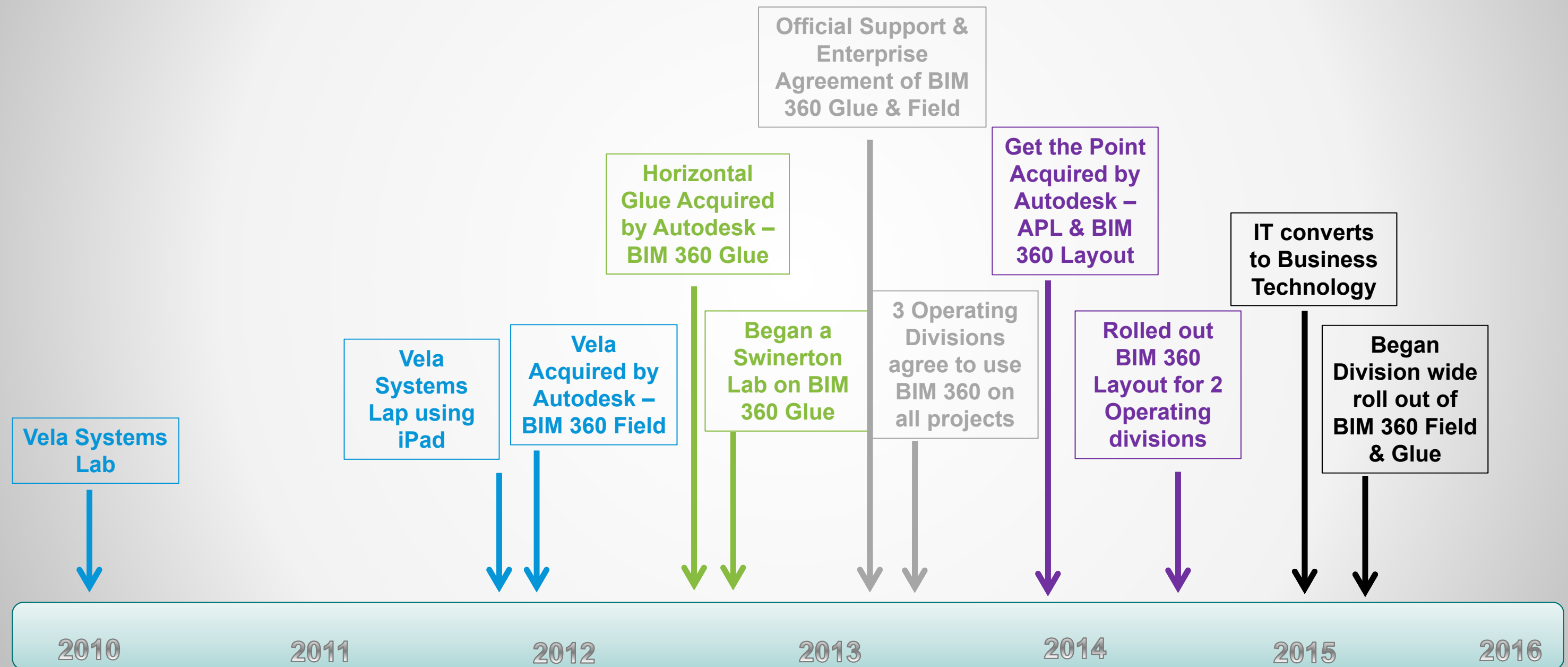


- Quality Control
- Punch List
- Progress Photos
- Equipment Tracking
- Commissioning
- Safety
- Daily Reports
- Coordination
- Layout



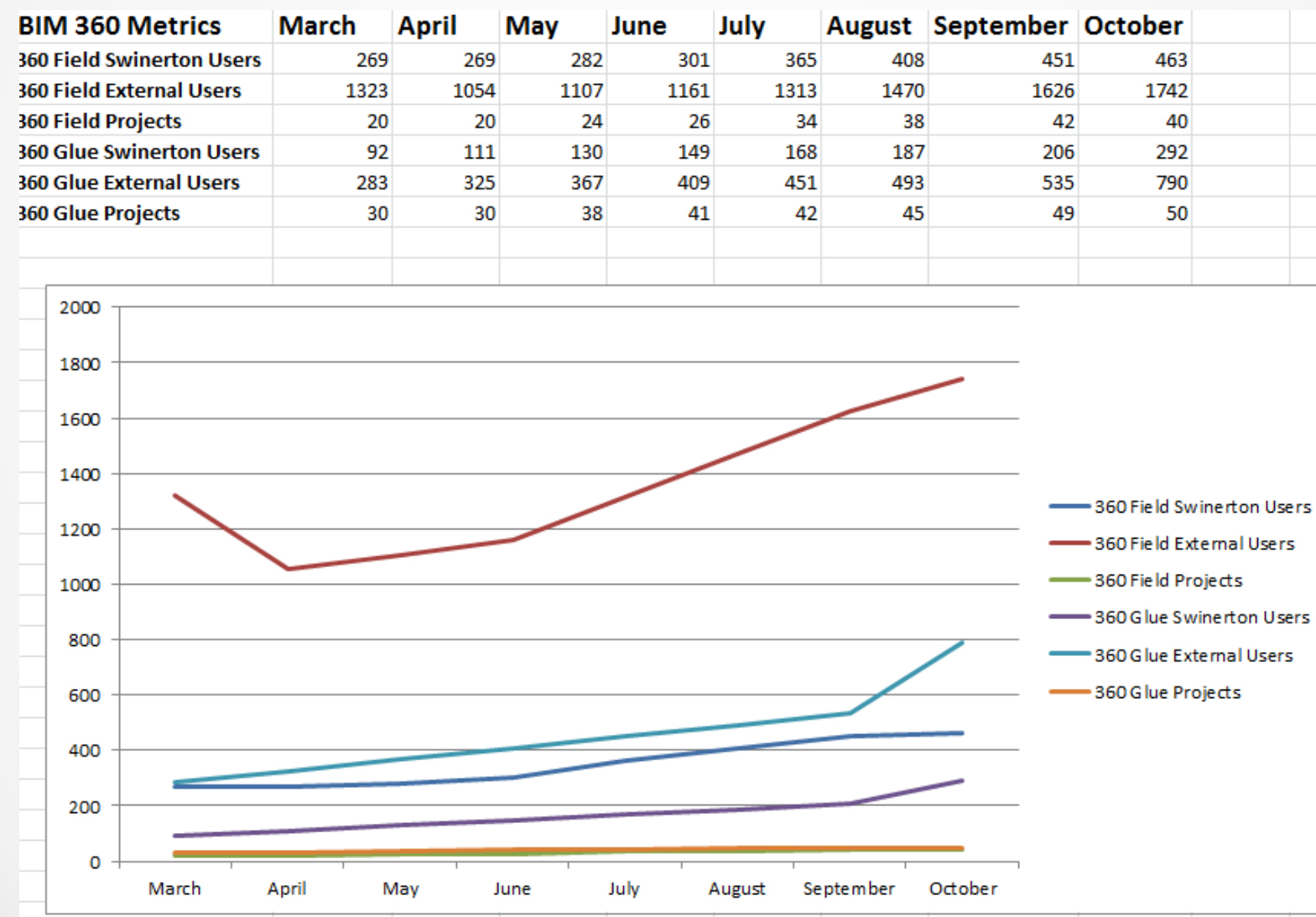
Roadmap

Roadmap



Statistics

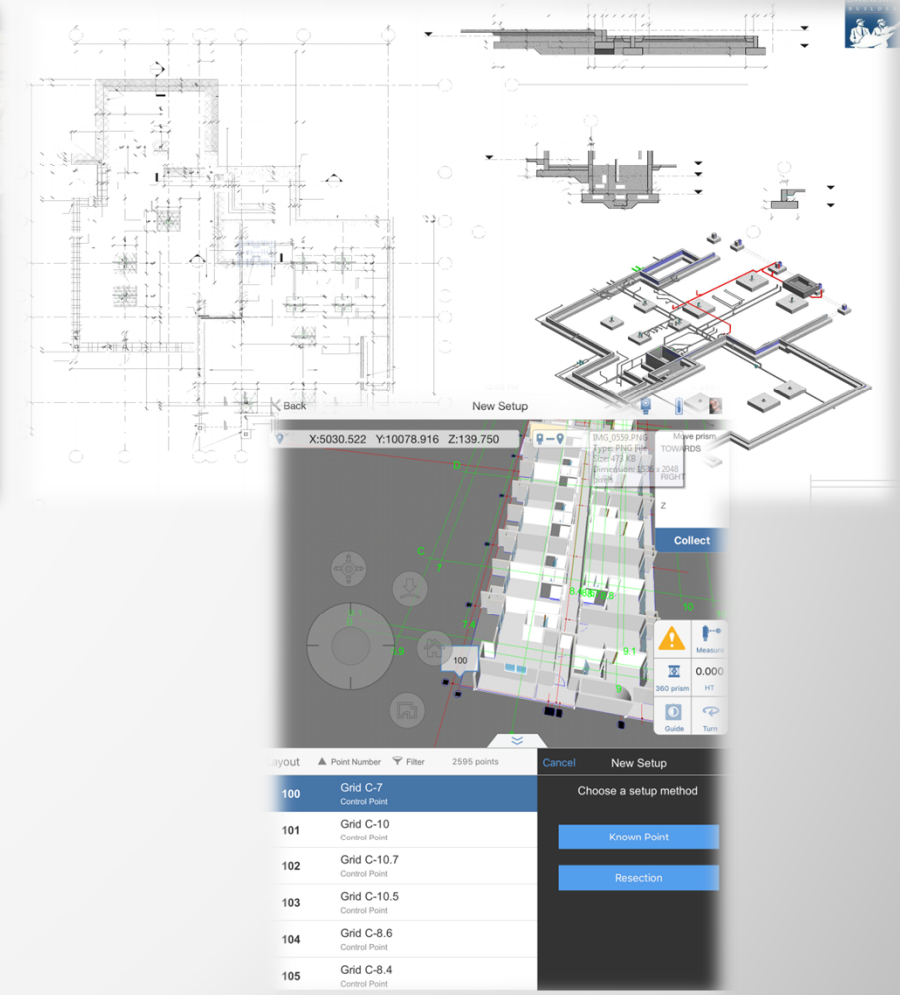
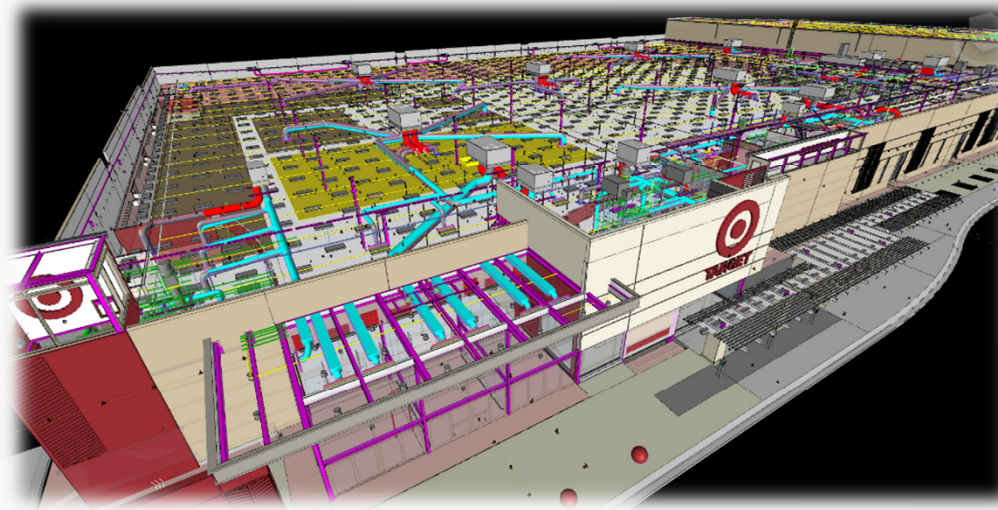
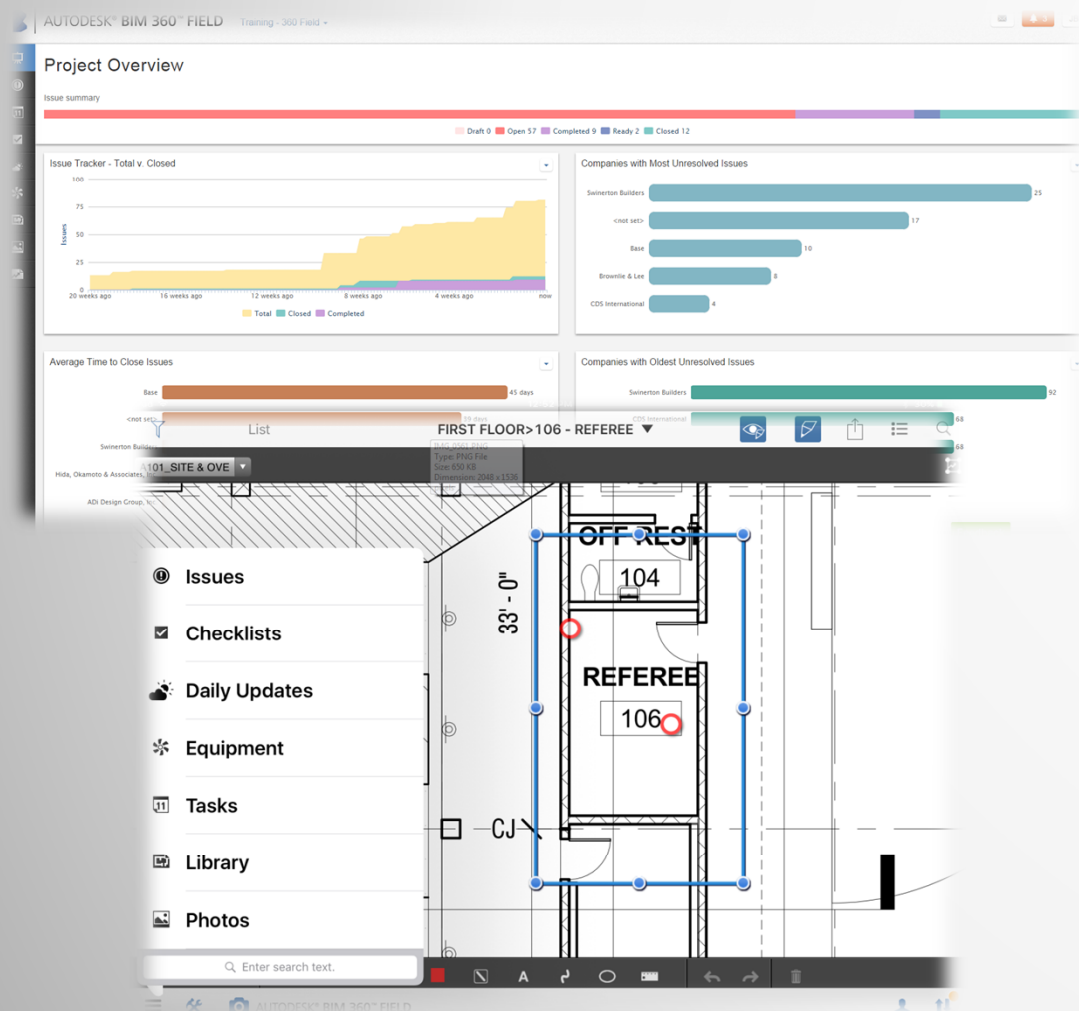
- March – December 2015: Users and Projects have doubled
- Since 2011: \$3 Billion of projects utilized BIM 360 Field/Glue



Strategy

Strategy

- Start small with pilot project
- Start small with which tools and modules to train and require
- Implement intentionally at start of project



Strategy

- Coordinate with “Process Owners” during setup
- Coordinate with Technology Group
- Utilize Autodesk & Experts
- Allow process owner to provide training
- Gain buy-in from entire team at start of project



QC Manager



Design Team & Owner



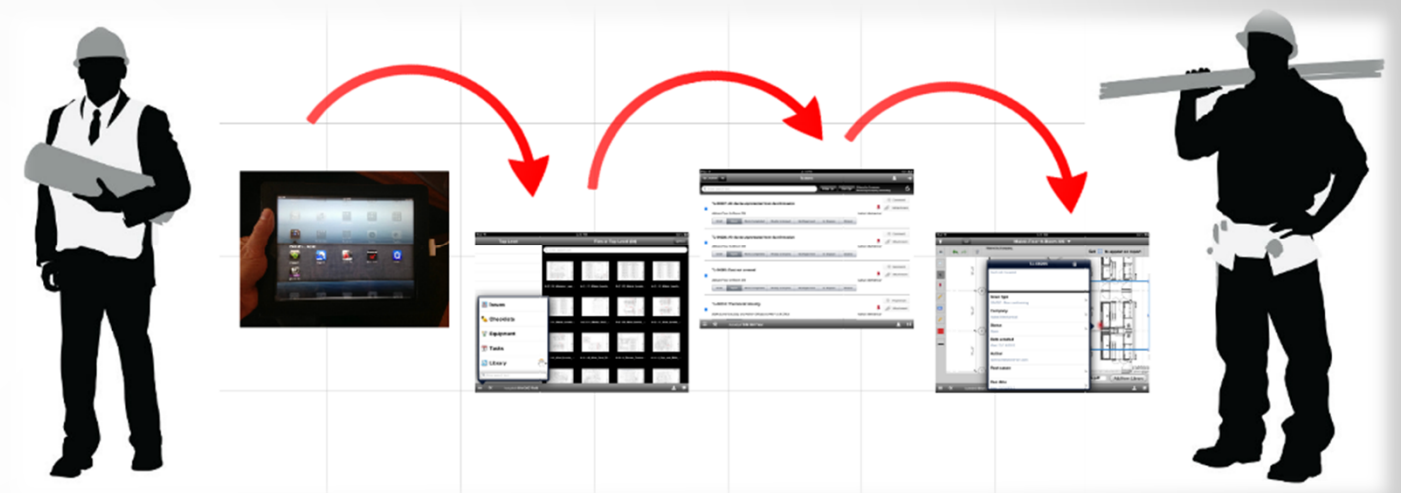
IT Department



Autodesk Experts

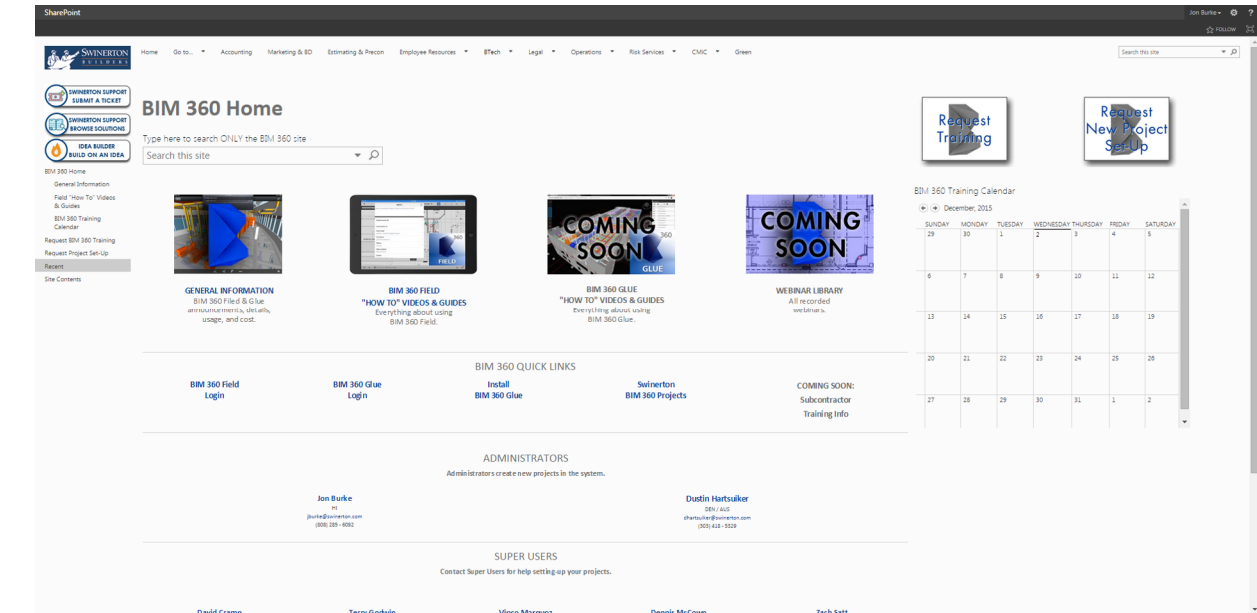
Strategy

- Bottom up approach allows organic growth
- Buy-in takes time
- Identify the passion
- Build the tool around the process



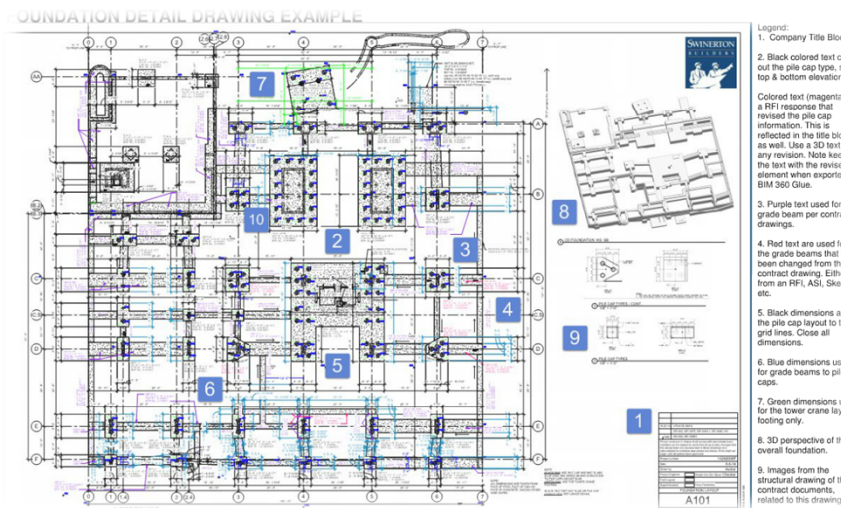
Strategy

- Enable the champions
- Balance between SOP & Guidelines
- Support material increases use & adoption
- Valuable tools for marketing & proposals



SWINERTON BUILDERS
Layout Process
VERSION 1.2 – 06/19/2015

AIM: OPTIMIZE OUR LAYOUT PROCESS



American Institute of Architecture
**CONSTRUCTION
TECHNOLOGY**

QC Manager

WE BUILD TRUST IN OUR CLIENTS, EXCELLENCE IN OUR PEOPLE, AND QUALITY IN OUR PROJECTS



AUTODESK UNIVERSITY 2015



Strategy

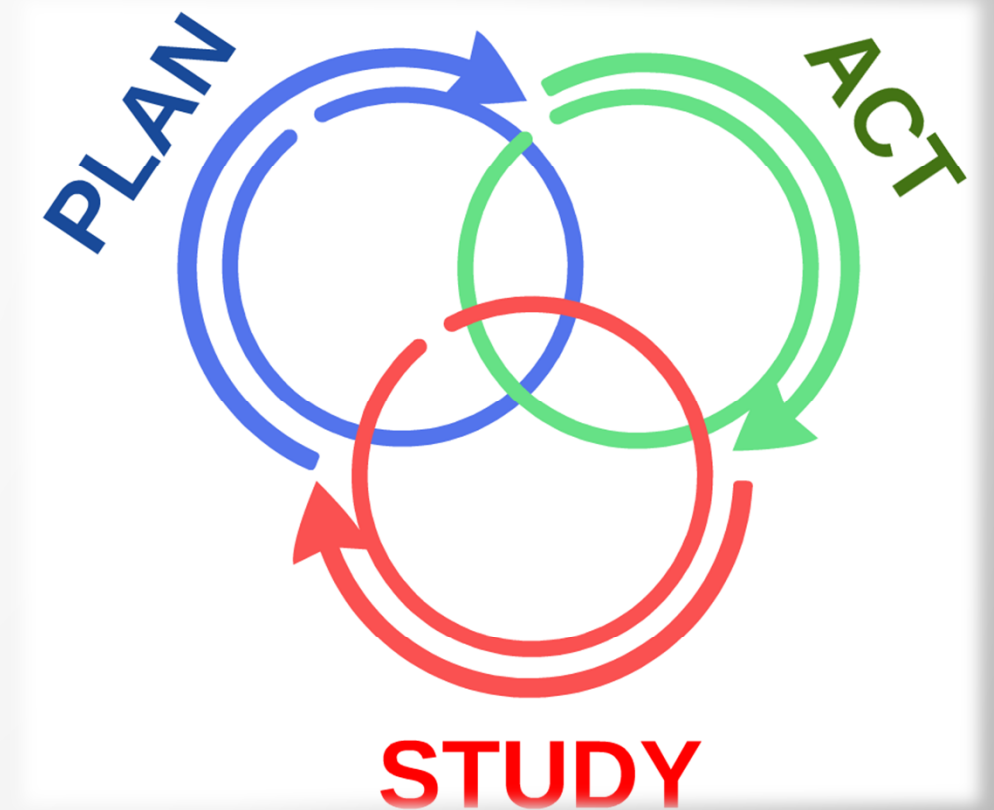
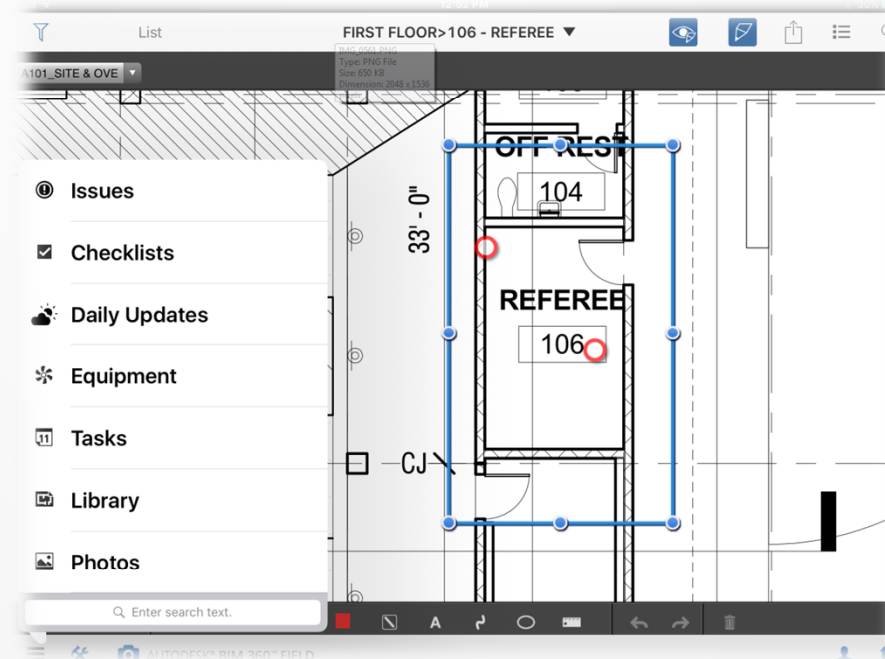
- Integrate tools to improve current workflows & processes
- Utilize API's
- Data drives action & improvement
- Begin with the end in mind

Quality Statistics Summary for Job

Job: 14292008
As of Date: Wednesday, September 30, 2015

QUALITY ITEM	SOURCE SYSTEM	TYPE	STATUS	COUNT
Deficiency	360 Field	QA/QC : QA/QC Deficiency	Closed	69
Deficiency	360 Field	QA/QC : QA/QC Deficiency	Open	16
Deficiency	360 Field	QA/QC : QA/QC Documentation	Closed	87
Deficiency	360 Field	QA/QC : QA/QC Documentation	Open	11
Submittal	CMIC	QUALITY	Anticipated/Pending	101
Submittal	CMIC	QUALITY	Submitted/Started	5
Submittal	CMIC	QUALITY	Approved/Completed	47

10/8/2015 4:34:37 PM



Next Steps

Next Steps

- More Integration – Building Ops & BIM 360 Field
- Self-Perform Planning and tracking – BIM 360 Plan
- Integrate BIM 360 Docs
- Utilize Root Cause Analysis
- Data drives action & improvement
- Integrate APL & BIM 360 Layout



Be heard! Provide AU session feedback.

- Via the Survey Stations, email or mobile device.
- AU 2016 passes awarded daily!
- Give your feedback after each session.
- Give instructors feedback in real-time.



Questions

