

# ReCap to the Max! How to Edit, Document, and Coordinate

Mark LaBell Jr.

Head of Innovation





## About the speaker

Mark LaBell Jr

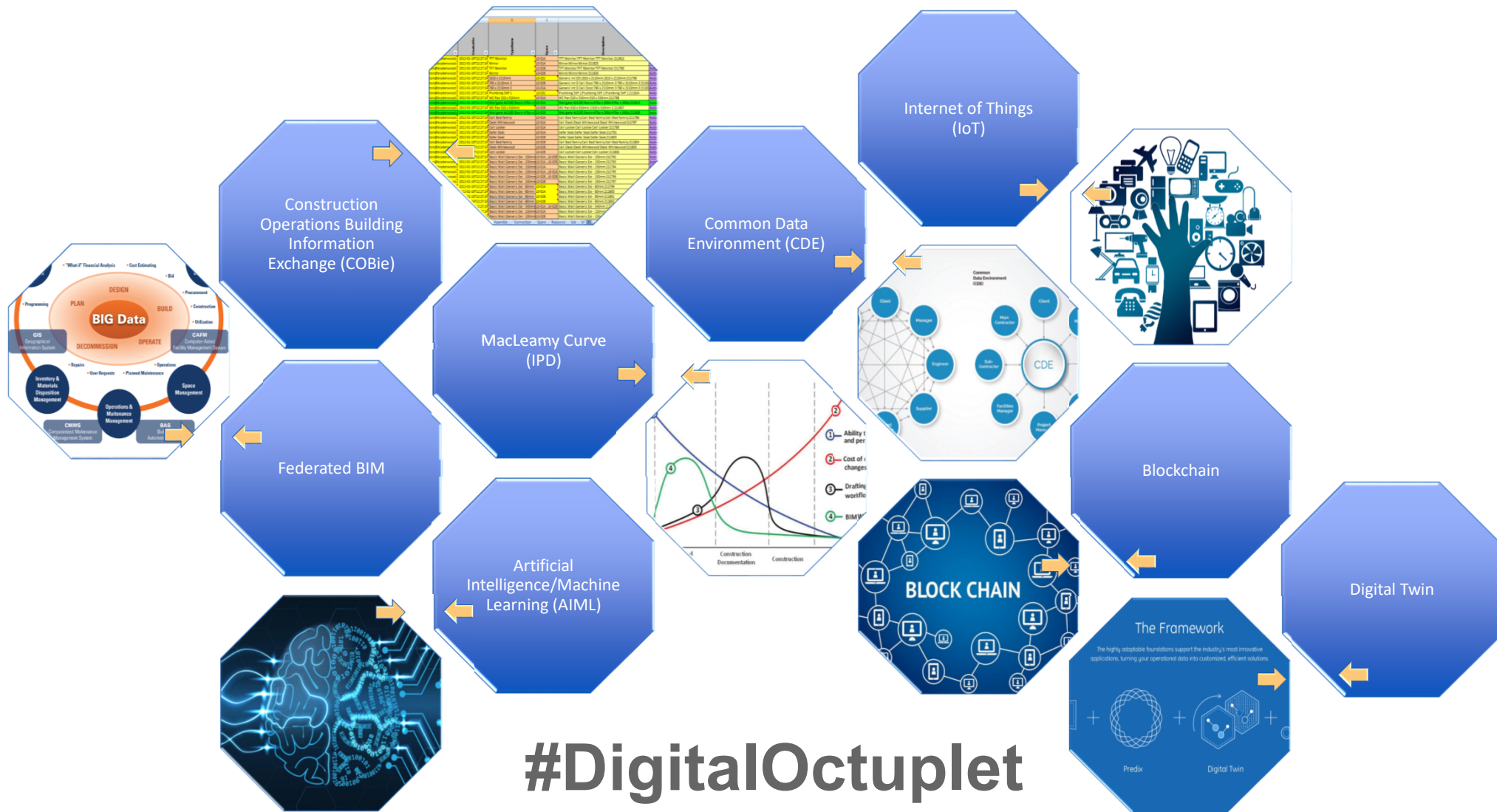
Head of Innovation, SSOE Group

Implemented first laser scan @ SSOE in 2008

Worked on 500+ scan projects

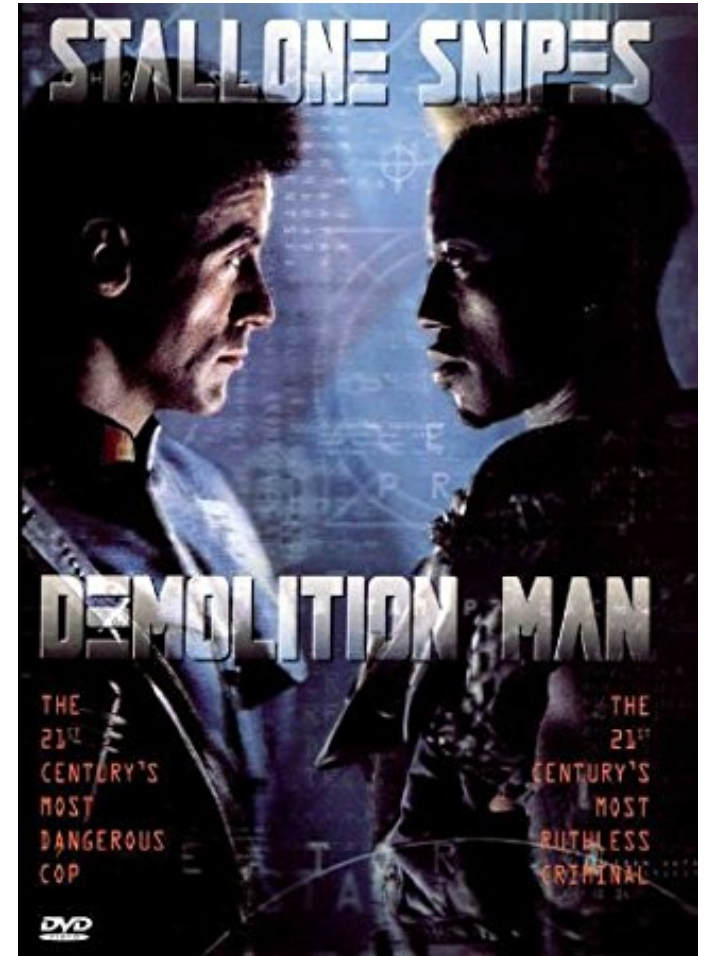
Worked closely with ReCap team on features

Started Hackathons and Innovation program



# Agenda

1. [Interface overview](#)
2. [How to QA scans](#)
3. [Point Cloud cleanup](#)
4. [Demolition Man](#) - this ain't Wesley Snipes' Point Clouds
5. [Annotation and Assets](#)
6. [Navisworks Option-eering](#)
7. [Q&A](#)



# PSA on Coordinates

- State plane is still a disaster
- Program limitations
  - P3D 5000',5000'
  - Revit 20 miles
- Set a Building or Site monument. (IE 1000',1000',100')
- Do no move point clouds to fit design models

# Example 0

- How do you QA a project in ReCap
  - Use pick limit box
  - Assign spray to region
  - Set color to scan position
  - Launch Project Navigator (jot down notes of colors)
  - Go back to registration

# Example 1

- How to clean project
  - Create spray region
  - Assign spray to region
  - Export as spray file
  - Delete points and then do for rest of elements

## Example 1 cont.

- Delete all points in the file
- Saveas to remove all points from RCS
  - Show folder on local computer
- Import P-Files from reference folder
- Review project navigator
- Create folders for scan positions vs point clouds
- Save



## Example 2

- In Realview mode create a markup for demolition
- Repeat up to 4x
- Save file and review on recap360 website
- Connect iPad to show interchange for contractors
  - Switch to point cloud view
  - Use pick limit box, show rotation
  - Create demo region and assign points
- Show Bluebeam workflow if cloud not allowed per client

# Example 3

- Dimension features
  - Pipe snap
  - Dim to surface, ortho
  - Show modification of dims
  - Add tag info to dims, pictures
- Import CSV File of comments
- Show search function
- Delete Demo region, attach Demo RCS file
- Attach NWD file

# Example 4

- Open Navisworks Simulate
  - Factory Design plugin for viewing mirror bubbles
  - Voxel move



# AUTODESK®

## Make anything™

Autodesk and the Autodesk logo are registered trademarks or trademarks of Autodesk, Inc., and/or its subsidiaries and/or affiliates in the USA and/or other countries. All other brand names, product names, or trademarks belong to their respective holders. Autodesk reserves the right to alter product and services offerings, and specifications and pricing at any time without notice, and is not responsible for typographical or graphical errors that may appear in this document.

© 2018 Autodesk. All rights reserved.

