

AS122151-L

AutoCAD Customization Boot Camp—Basic (No Experience Required)

Lee Ambrosius
Autodesk, Inc.

Learning Objectives

- Learn how to create custom desktop shortcuts
- Learn how to create command aliases
- Discover tools and tool palettes
- Learn how to modify the Quick Access toolbar and ribbon

Description

You can extend AutoCAD software in a number of ways, but many users are unsure of where or how to get started. In this lab, you'll create custom desktop shortcuts, create and modify command aliases that you can use to start commands, define tools and tool palettes to reduce repetitive drawing tasks, and modify the Quick Access toolbar and ribbon to improve access to commonly used commands. This lab will give you a solid foundation in some of the available customization features that AutoCAD offers to increase your productivity upon your return to the office. This session will feature AutoCAD software and AutoCAD LT software.

Speaker(s)

Lee Ambrosius is a Principal Learning Experience Designer at Autodesk, Inc., for the AutoCAD and AutoCAD LT products on Windows and Mac OS. He works primarily on the customization, developer, and CAD administration documentation along with the user documentation. Lee has presented at Autodesk University for more than 10 years on a wide range of topics, from general AutoCAD customization to programming with the ObjectARX technology. He has authored a number of AutoCAD-related books, with his most recent project being *AutoCAD Platform Customization: User Interface, AutoLISP, VBA, and Beyond*. When Lee isn't writing, you can find him roaming various AutoCAD community forums, posting articles on his or the AutoCAD blog, or tweeting information regarding the AutoCAD platform.

Twitter: @leeambrosius

Email: lee.ambrosius@autodesk.com

Blog: <http://hyperpics.blogs.com>

1 Introduction

The AutoCAD software is an extensive 2D drafting and 3D modeling program. The functionality of AutoCAD has grown since it was first introduced almost 35 years ago in 1982. What sets AutoCAD apart from many other CAD programs is its expansive customization and automation capabilities. The customization and programming features of AutoCAD allow individuals and companies to simplify the everyday workflows they follow. Workflows that many seek to customize or automate are:

- Initial drawing setup; establish drawing units and format, create layers, insert a title block and populate attribute values
- Extraction of design data for use downstream in a bill of materials or order entry system
- Consumption of project information from a data source such as a spreadsheet or database

This lab will provide you with the opportunity to roll-up your sleeves and get some hands-on experience with customizing AutoCAD which will prepare you to apply the techniques covered in your everyday tasks. While knowing how to program is not a requirement to customize AutoCAD, learning how to program does provide you with a greater set of resources to automate tasks in AutoCAD.

2 Which Customization and Programming Options are Available

Not all customization and programming options are created equally, some options are easy to learn and are well integrated into the AutoCAD program that you might not even realize you are customizing the program. Creating new layers and named styles are forms of customization that are preformed frequently, but many might not consider that as a form of customization; though they are altering the appearance of the objects in a drawing to match their standards. Storing layers and named styles in a drawing template can help eliminate the need to create them in each drawing. There are two types for customization and programming that are available; drawing and application.

The following lists many of the customization and programming options available:

Basic

Drawing

- Layers
- Blocks
- Annotation styles (text, dimensions, multileaders, and tables)
- Materials and visual styles
- Drawing templates

Application

- Desktop shortcut
- Command aliases
- Tool palettes
- Workspaces
- User profiles
- Plot styles

Intermediate

Drawing

- Dynamic blocks

Application

- Scripts
- Action macros
- User interface (CUI Editor)
- DIESEL
- Custom linetypes and hatch patterns
- Custom shapes and text styles

Advanced (Application Only)

- AutoLISP / Visual LISP
- Visual Basic for Applications (VBA)
- ActiveX / COM (VBA, VBScript, VB.NET, C#, C++)
- Database connectivity
- Managed .NET (VB.NET, C#)
- ObjectARX (C++)
- JavaScript
- Sheet Set Manager API
- CAD Standards plug-ins
- Transmittal API
- Connectivity Automation API
- Forge Platform APIs

3 What You Need to Get Started

Many of the customization and programming options available for use within the AutoCAD program are supported through utilities or commands found inside the program, or applications installed with the operating system (Windows or Mac OS). It is when you want to extend the functionality of the AutoCAD program using ActiveX, Managed .NET, or ObjectARX that you will need to purchase, download, and/or install additional software.

4 Supplemental Content

See the separate *AS122151-L-Ambrosius-Supplement-AU2017.pdf* for the supplemental content in the dataset related to this session.


5 Exercises

This section contains all the exercises that will be covered during this lab or when you get back to the office.

E1 Create a Desktop Shortcut

This exercise explains how to create a custom desktop shortcut to launch AutoCAD, create the default drawing based on a specific drawing template file, set the '3D Basic' workspace current.

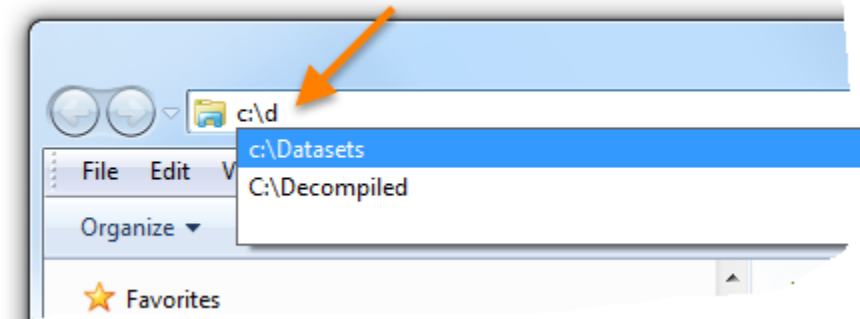
1. Open Windows Explorer or File Explorer.

Tip: If you have a keyboard with a Windows key, press  +E to launch Windows Explorer or File Explorer.

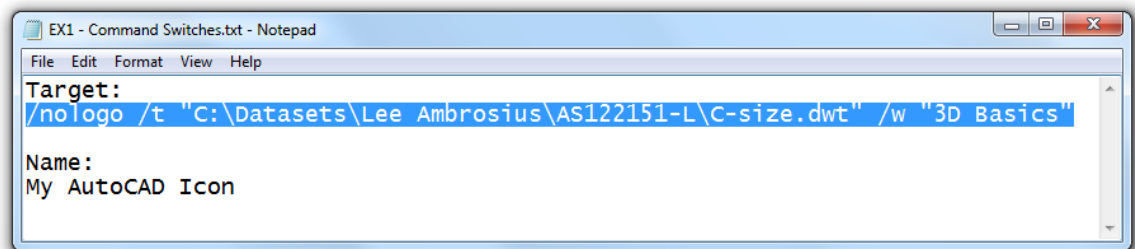
Windows Explorer or File Explorer can also be started from Windows by doing one of the following:


- a. On the Windows 7 taskbar, click the Start Menu button ➤ All Programs ➤ Accessories ➤ Windows Explorer.
- b. On the Windows 8 or Windows 10 Start Screen, type **explorer**. In the Search charm, click File Explorer. You can also right-click in the lower-left corner of the screen and choose File Explorer.

2. In Windows Explorer or File Explorer, in the Address Bar, type **c:\d** and select the Datasets folder.

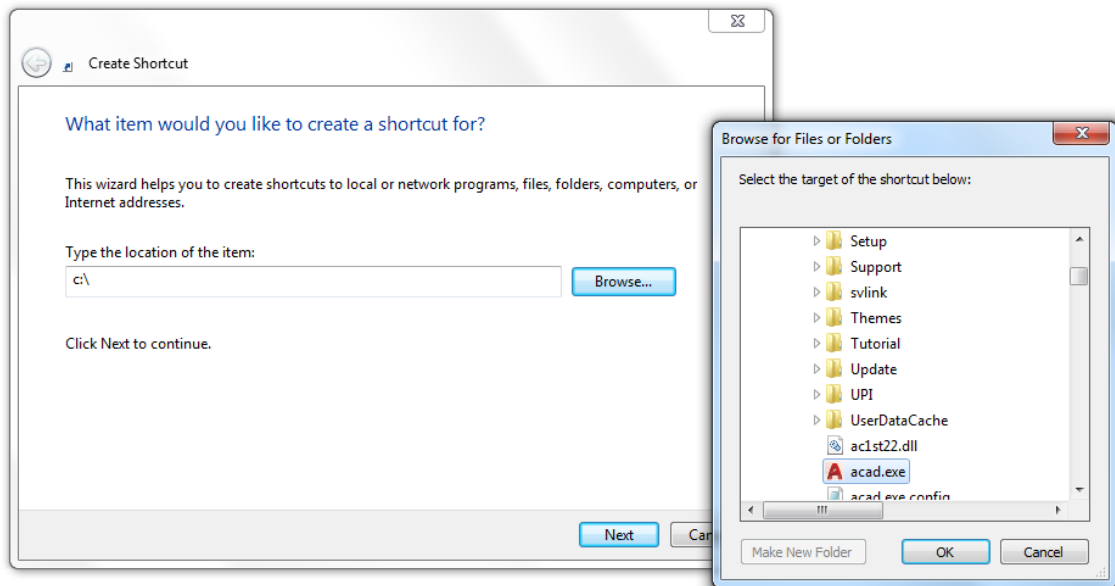


3. Navigate to the dataset folder for this session.
The location and name of the dataset folder for this session should be
`C:\Datasets\Lee Ambrosius\AS122151-L`
4. In the *AS122151-L* folder, double-click the *EX1 - Command Switches.txt* file to open it in Notepad.
5. In Notepad, select the text under Target. Right-click over the selected text and choose Copy.

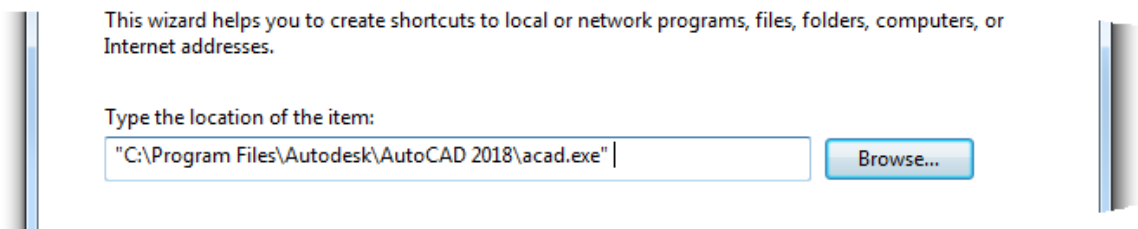


6. Minimize all open applications until you get to the Windows Desktop.
Tip: If you have a keyboard with a Windows key, press  +M to minimize all open Windows.
7. Right-click in an empty area of the desktop and click New ➤ Shortcut.
8. In the Create Shortcut dialog box, in the Type the Location of the Item text box, type **C:** and then click Browse.

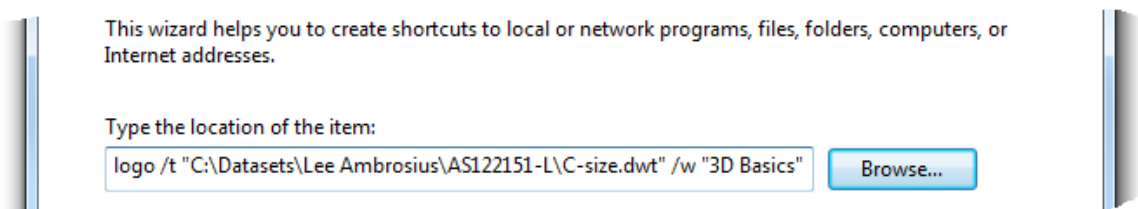
9. In the Browse for Files or Folders dialog box, navigate to *C:\Program Files\Autodesk\AutoCAD 2018* and select **acad.exe**. Click OK.



10. In the Create Shortcut dialog box, click in the Type the Location of the Item text box and press the End key followed by pressing the Spacebar once.



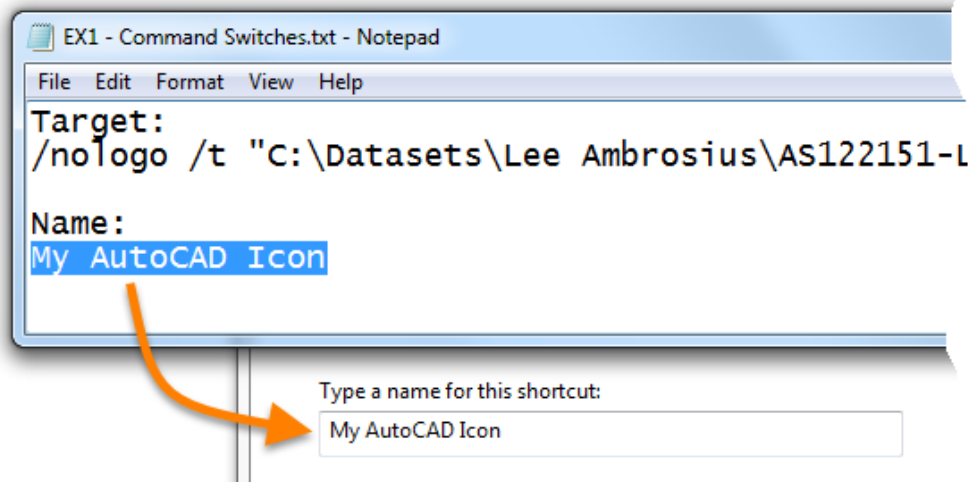
11. Right-click in the Type the Location of the Item text box, and choose Paste.



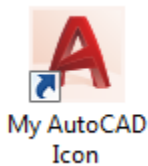
Note: If the dataset was placed in a different location, update the text *C:\Datasets\Lee Ambrosius\AS122151-L* to match the location of the dataset for this session.

12. Click Next.

13. In Notepad, copy the text under Name and replace the text in the Type a Name for this Shortcut text box of the Create Shortcut dialog box with the copied text.

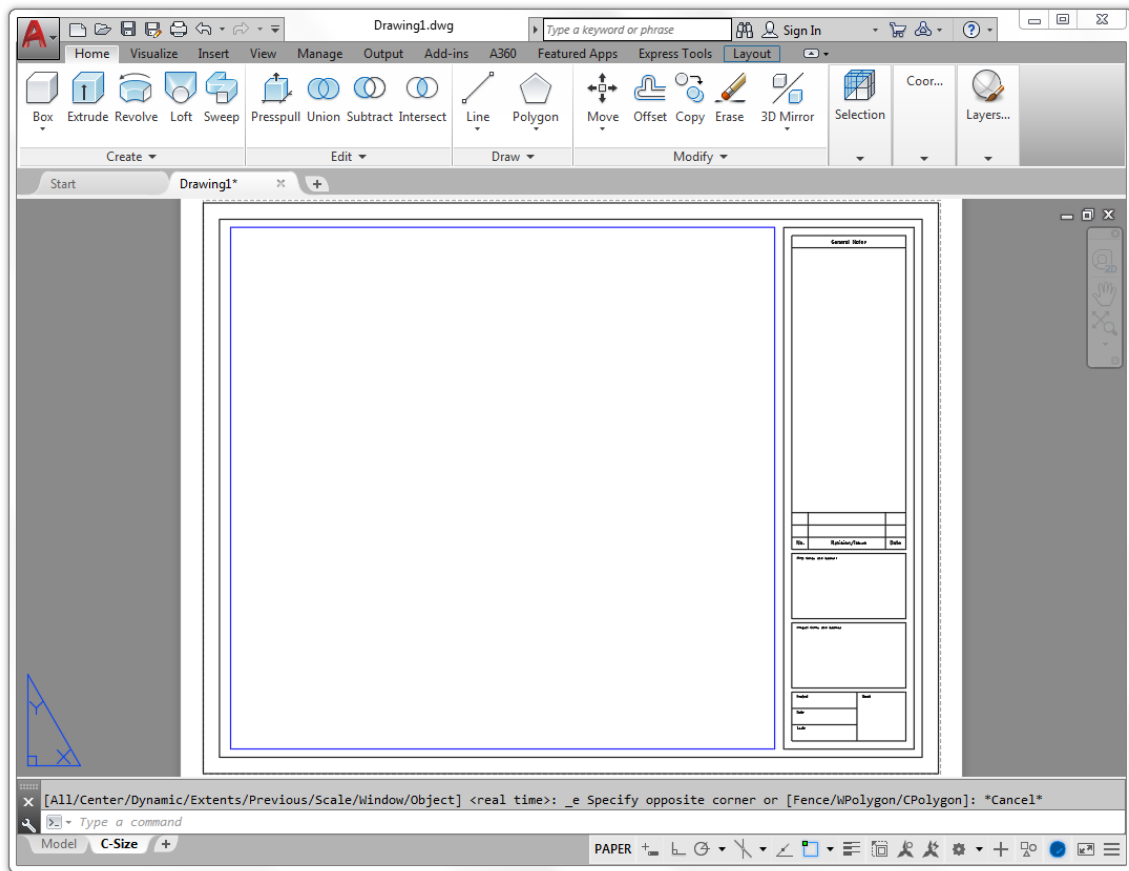


14. Click Finish to create the new shortcut.
15. If a message box is displayed informing you that the shortcut already exists, click Yes.
- Normally, you would click No and change the name being of the shortcut to avoid losing the existing customized shortcut.
16. Double-click the My AutoCAD Icon shortcut to test it.

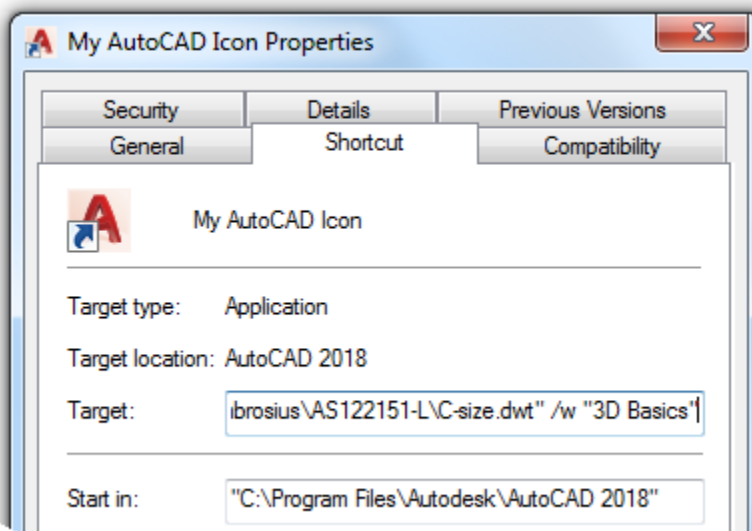


When the AutoCAD program starts, you should notice that no splash screen is displayed, the default drawing created is based on the *C-size.dwt* drawing template file, and the 3D Basic workspace is set current.

Note: If the drawing template file isn't found, AutoCAD will start but the default drawing won't be based on the *C-size.dwt* drawing template file.



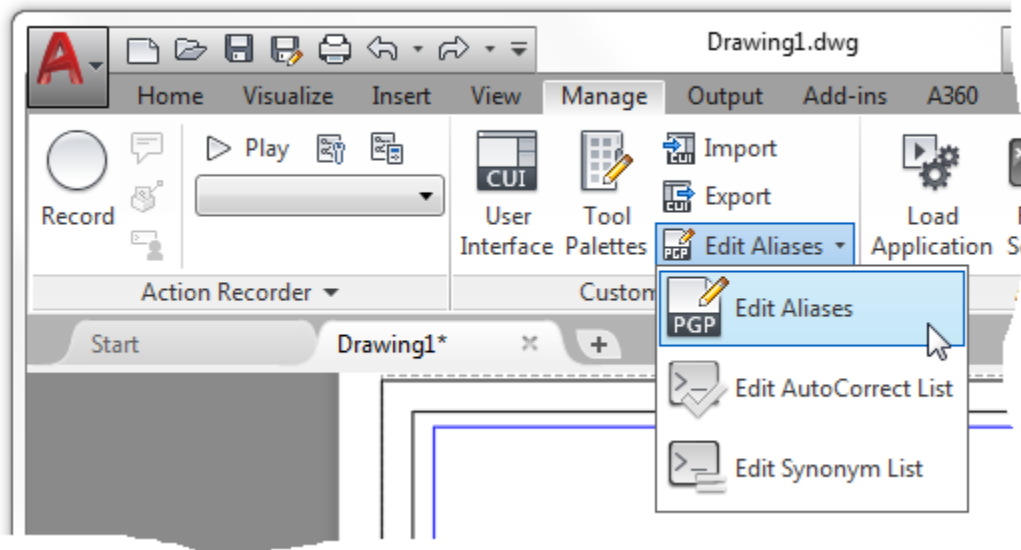
After a shortcut has been created, it can be modified by right-clicking over it and choosing Properties. When the Properties dialog box is displayed, you can modify the application and command line switches previously added in the Target text box.



E2 Define Custom Command Aliases

This exercise explains how to define an alias to start the REVCLLOUD command, override the C command alias to start the COPY command instead of CIRCLE, and create a new alias for the CIRCLE command.

1. In AutoCAD, on the ribbon, click Manage tab ➤ Customization panel ➤ Edit Aliases drop-down menu ➤ Edit Aliases.



2. In Notepad, in the text editor area, scroll to the bottom and click in the blank line below the last line under the '-- User Defined Command Aliases --' section.
3. Type the following text:

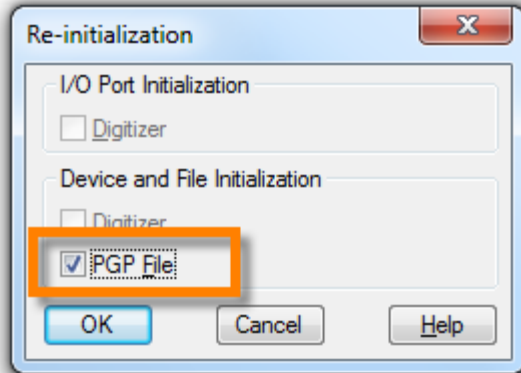
```
RV, *REVCLLOUD
C, *COPY
CC, *CIRCLE
```

The PGP file should now look similar to the following:

```
; than once in this file, items in the User Defined Command Alias take
; precedence over duplicates that appear earlier in the file.
; *****-----***** ; No xlate ; DO NOT REMOVE
RV, *REVCLLOUD
C, *COPY
CC, *CIRCLE
```

4. In Notepad, click File menu ➤ Save.
5. Switch back to the AutoCAD program, at the Command prompt, type **REINIT** and press Enter.

6. In the Re-initialization dialog box, click PGP File (it should now be checked) and click OK.



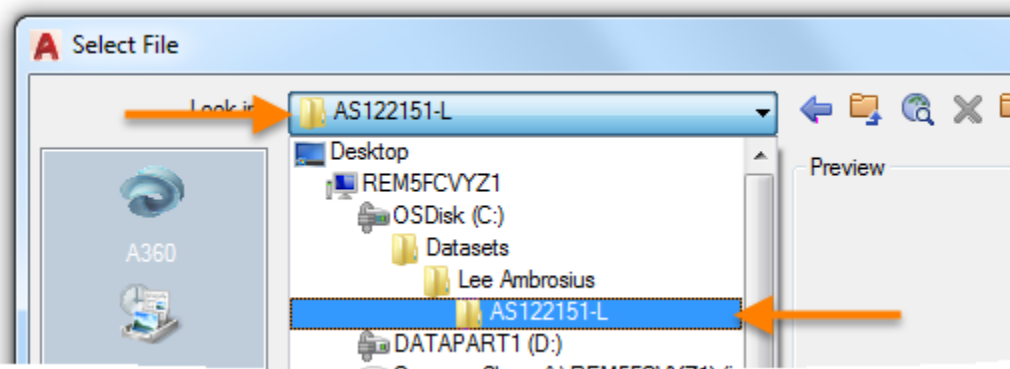
7. At the Command prompt, type **RV** and press Enter.
The REVCLOUD command should start.
8. Specify two points for the revision cloud or press Esc to cancel the REVCLOUD command.
9. Test the C and CC command aliases as well.

E3 Create a Tool Palette and Tools

This exercise explains how to create a new tool palette with tools based on existing geometry in a drawing and a command tool defined in the *acad.cuix* file.

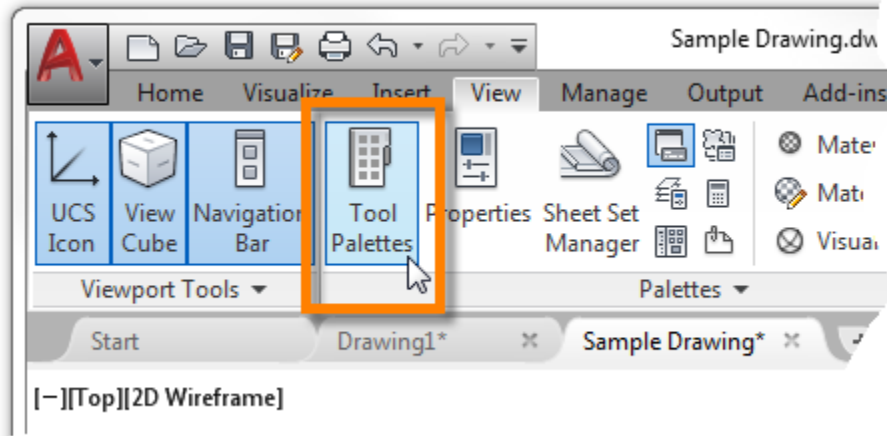
The following steps explain how to create a new tool palette:

1. In AutoCAD, open the *Sample Drawing.dwg* file from the *C:\Datasets\Lee Ambrosius\AS122151-L* folder or the folder in which the dataset for this session is stored.



Tip: In the File Name text box, type **c:** and press Enter to get to the root level of C:.

- On the ribbon, click View tab ➤ Palettes panel ➤ Tool Palettes to display the Tool Palettes window if it isn't already displayed.

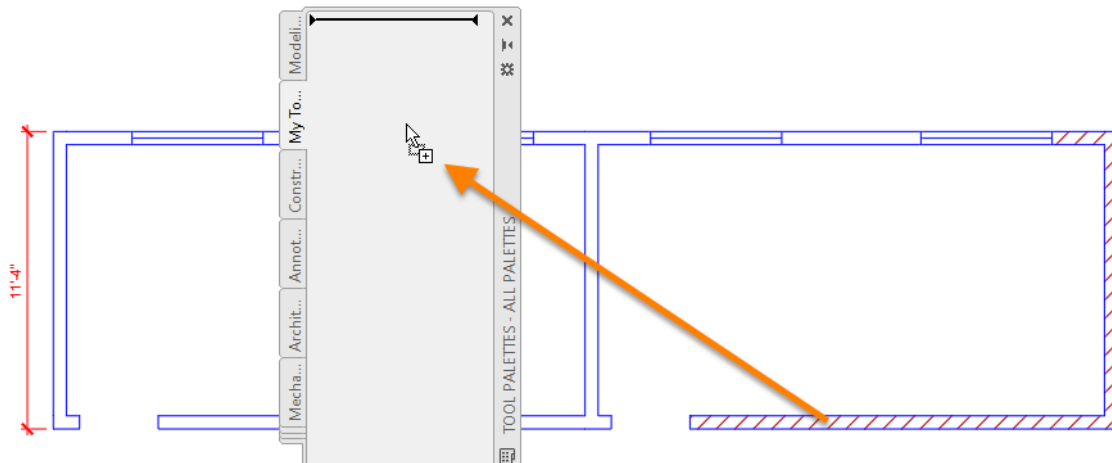


- On the Tool Palettes window, right-click over a tab or in an empty space, and choose **New Palette**.
- In the in-place editor, type **My Tools** and press Enter.

Note: If the in-place editor closes and the default name is accepted, right-click the new tool palette's tab and choose Rename Palette. Type the new name and press Enter.

In these steps, you add new tools to the My Tools tool palette:

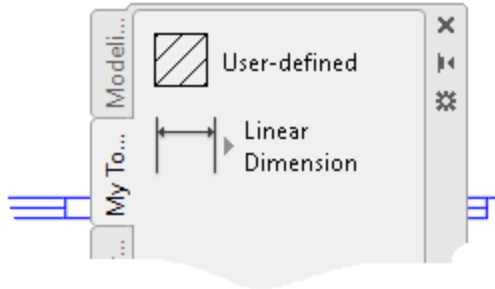
- Zoom to the extents of the drawing.
- Select the hatch object located in the walls along the right side of the drawing. Press and hold down the **right mouse** button, and then drag the cursor over the My Tools palette.



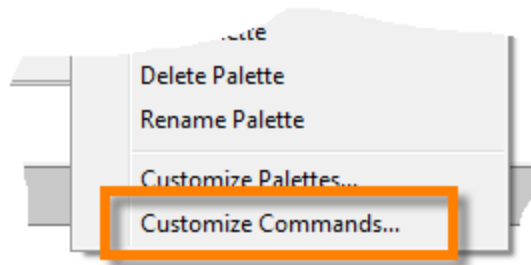
- Release the mouse button to create a new hatch tool based on the properties of the selected hatch object.

4. Select and drag the dimension from the left side of the drawing, and drop it onto the My Tools palette.

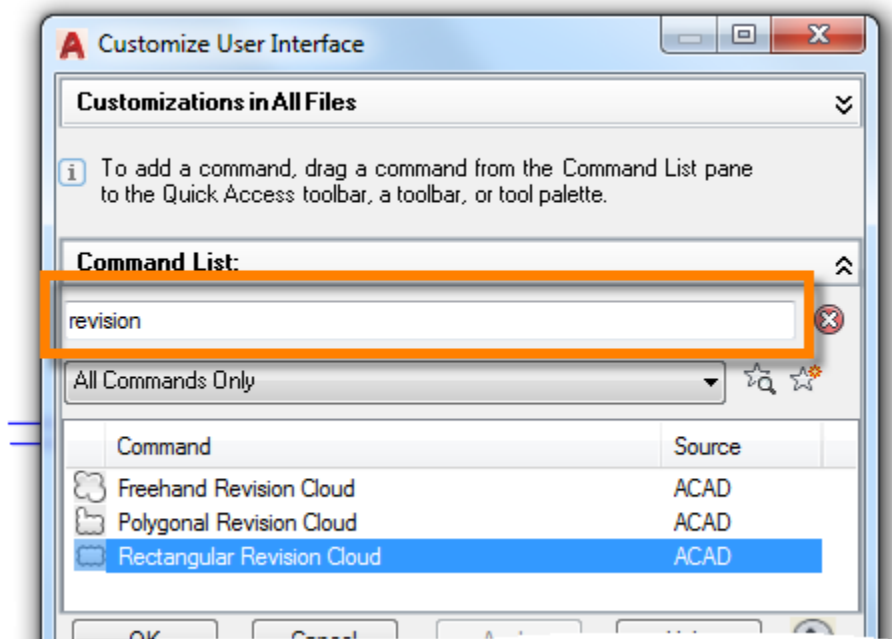
You should now have two new tools on the My Tools palette.



5. In an empty area of the My Tools palette or over the title bar of the Tool Palette window, right-click and choose **Customize Commands**.



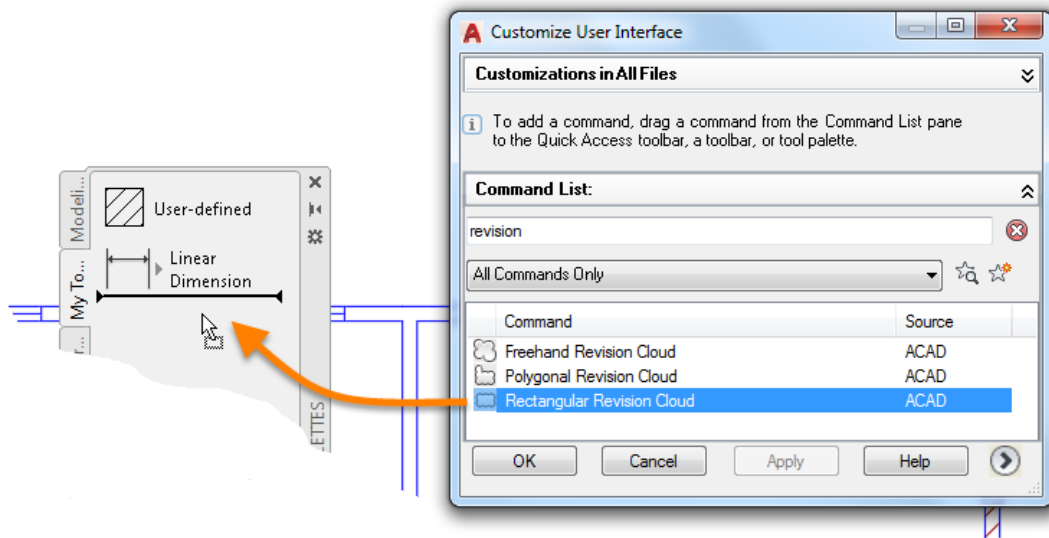
6. In the Customize User Interface editor, Command List pane, click in the Search Command List text box and type **revision**.



7. In the Commands list, select the Rectangular Revision Cloud command.

8. Press and hold down the **left mouse** button over the selected command, and drag the cursor over the My Tools palette.

Note: You might need to move the Customize User Interface (CUI) Editor to see the Tool Palettes window.



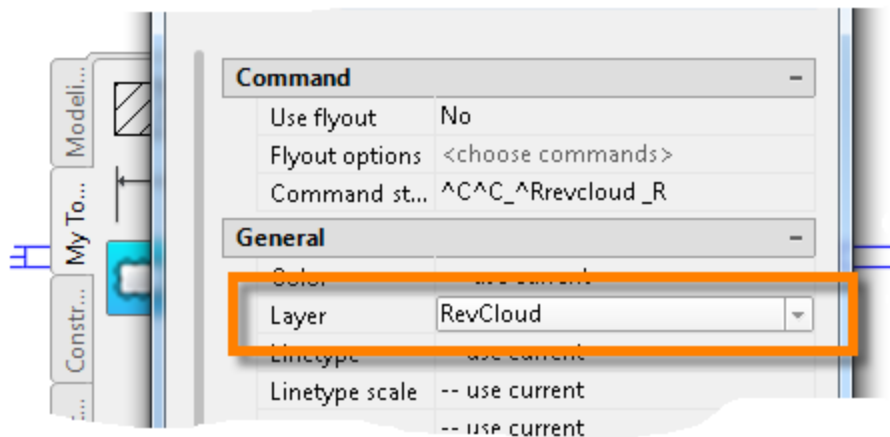
9. Release the mouse button to add the Command tool.
10. Click Cancel (or OK) to close the CUI Editor.

The following steps explain how to modify the properties of a tool:

1. On the Tools Palettes window, right-click over the Rectangular Revision Cloud tool and choose Properties.

The Command String field in the Tool Properties dialog box contains a copy of the command macro string from the original command stored in the CUI Editor.

2. In the Tool Properties dialog box, General section, click the Layer field and select **RevCloud** from the drop-down list.



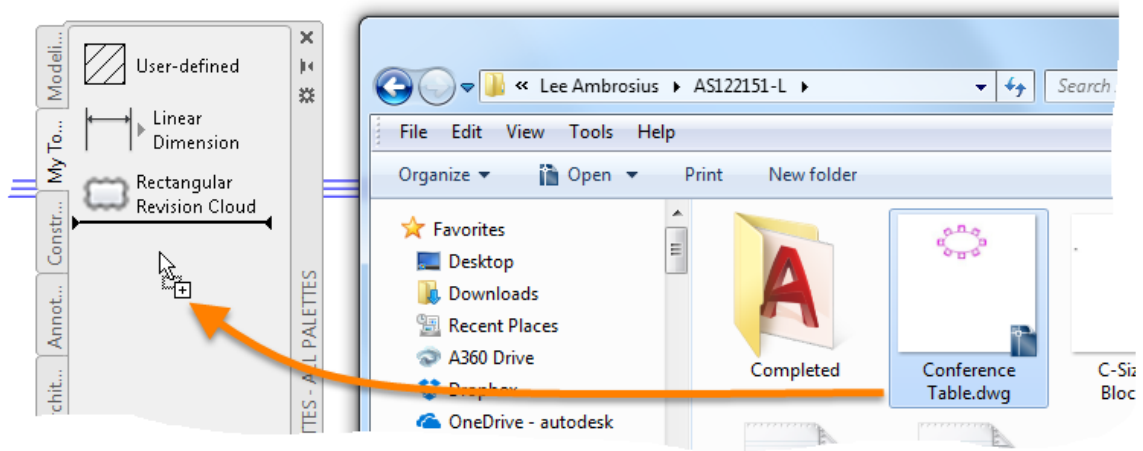
3. Click OK to apply the change.

The following steps explain how to create tools from drawing files:

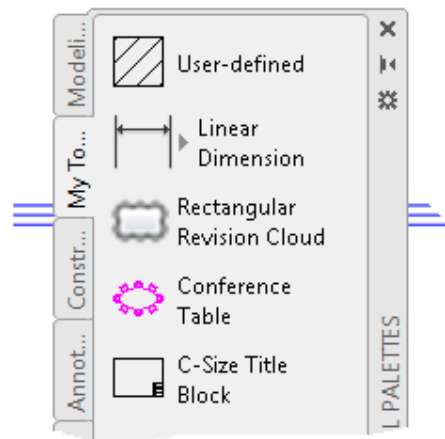
1. Switch to or open Windows Explorer or File Explorer.

Tip: You can open Windows Explorer or File Explorer from inside AutoCAD by entering **explorer** at the Command prompt.

2. In Windows Explorer or File Explorer, navigate to the *C:\Datasets\Lee Ambrosius\AS122151-L* folder or the folder in which the dataset for this session is stored.
3. Select the *Conference Table.dwg* file, and then drag and drop the file onto the My Tools palette.



4. Repeat the previous step for the *C-Size Title Block.dwg* file.



5. Switch back to AutoCAD and try each of the tools you added to the My Tools palette.

Some tools work differently when clicked versus dragged and dropped into the drawing area, such as the hatch and block tools.

Tip: Pressing the Spacebar after using a tool from the Tool Palettes window repeats that tool.

6. Create a new drawing and try the tools again.

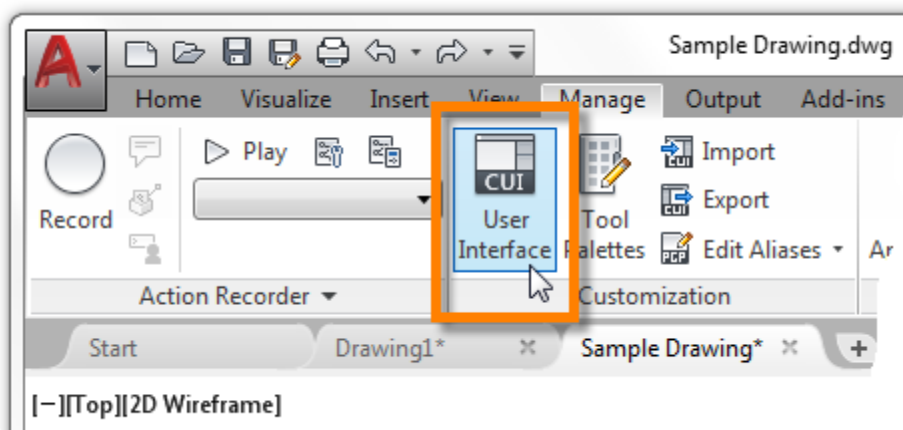
When the hatch, dimension, or Rectangular Revision Cloud tools are used the layers in which the tools were assigned are created in the new drawing. This happens because each tool remembers the properties of the layer from which the geometry was originally assigned when the tool was created or last modified.

E4 Create a Quick Access Toolbar (QAT)

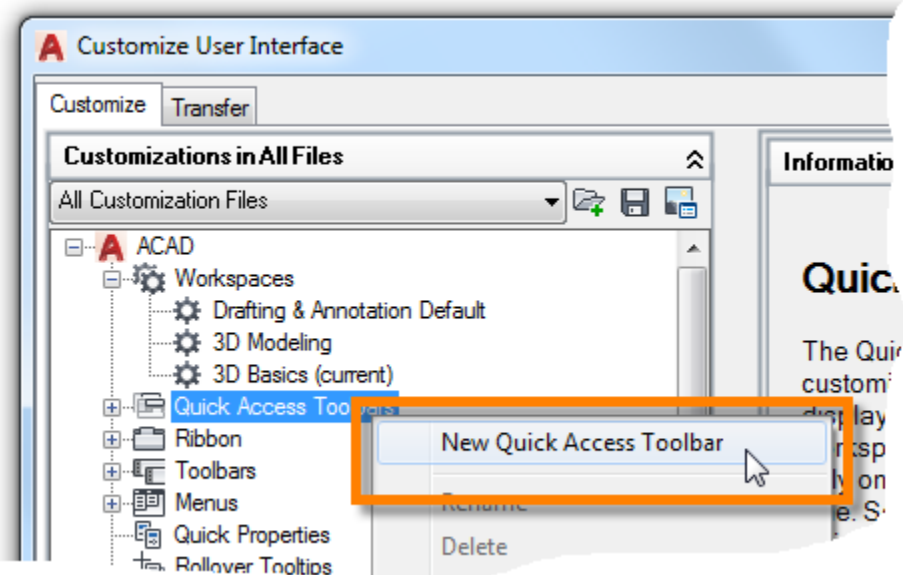
This exercise explains how to create a new Quick Access toolbar (QAT) and assign it to a workspace.

In these steps, you create a new QAT and modify the commands that shown by default:

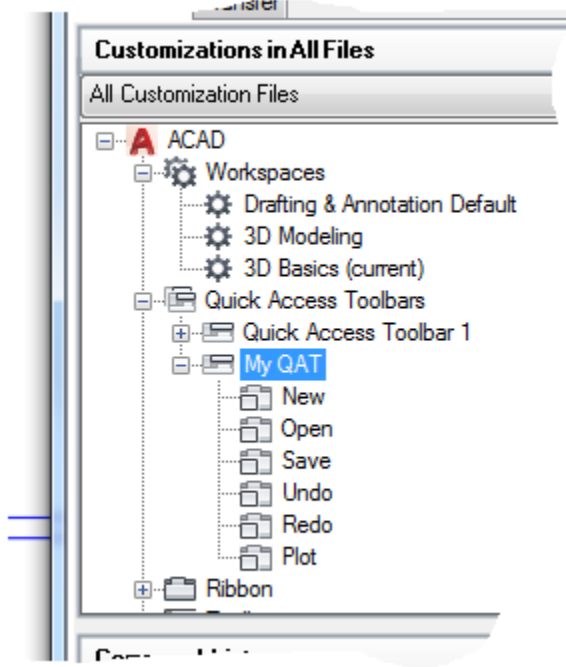
1. In AutoCAD, on the ribbon, click Manage tab ➤ Customization panel ➤ User Interface.



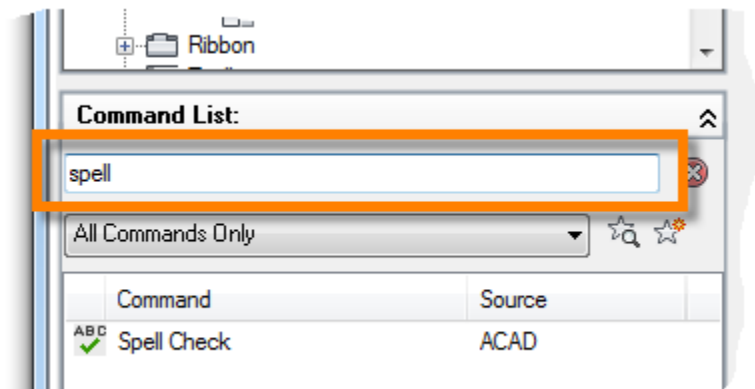
2. In the Customize User Interface (CUI) Editor, Customizations In pane, right-click the Quick Access Toolbars node and choose New Quick Access Toolbar.



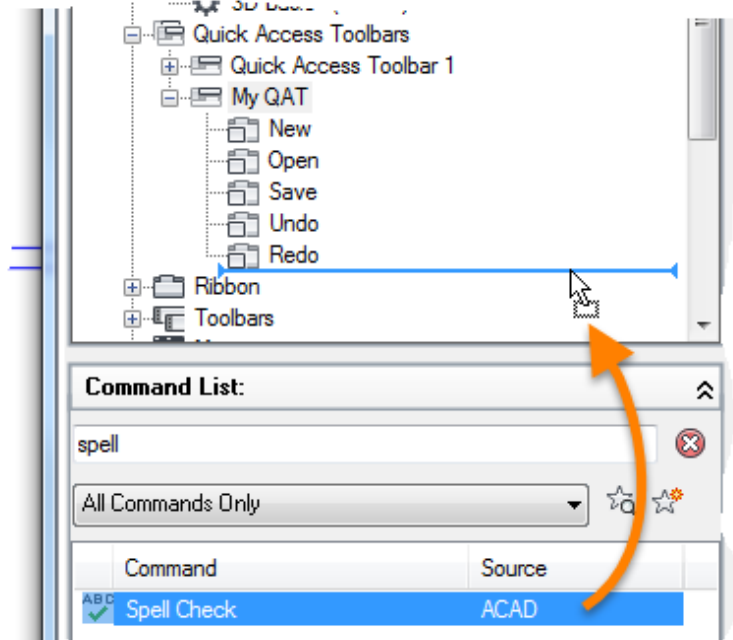
3. Rename the new toolbar by typing **My QAT** and pressing Enter.
Note: If you can't change the toolbar's name, right-click the new toolbar and choose Rename.
4. Click the plus-sign next to the new Quick Access toolbar to reveal the default set of commands.



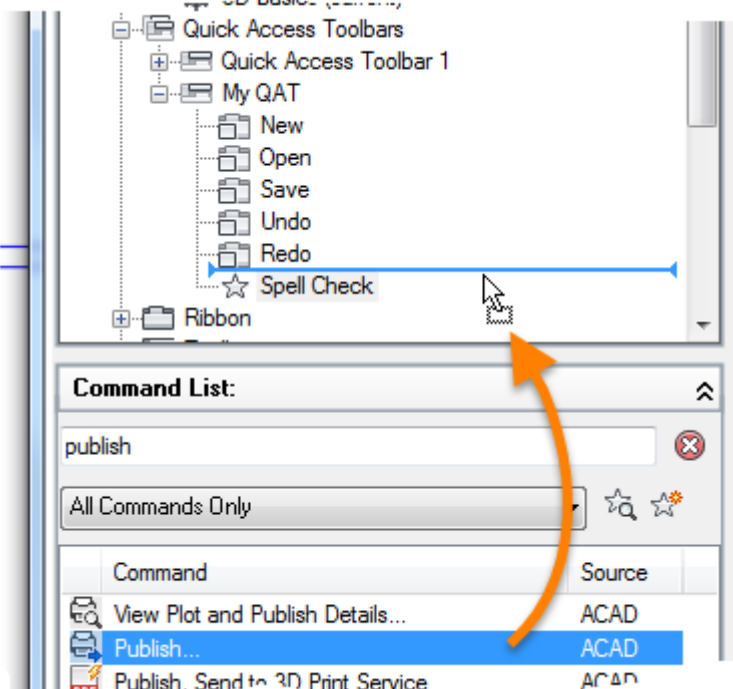
5. Right-click over the Plot command and choose Remove. Click Yes to confirm the deletion of the element.
6. In the Command List pane, Search Command List text box, type **spell**.



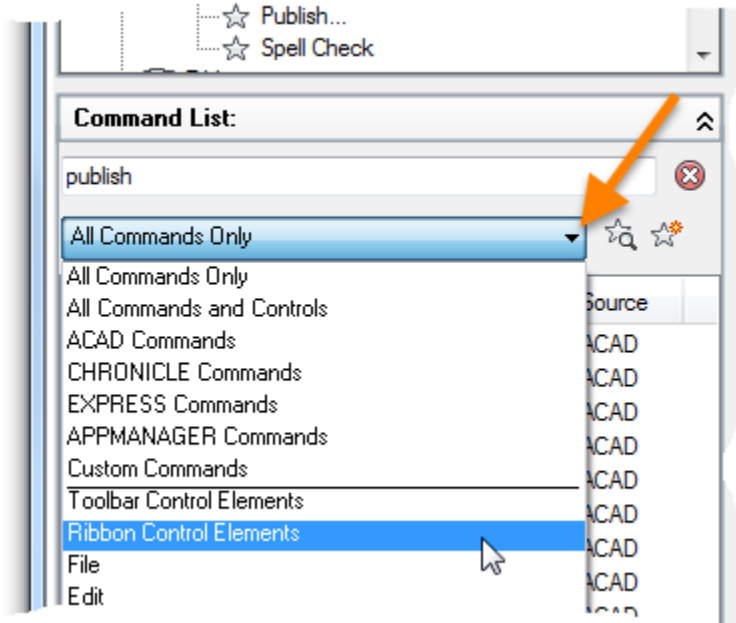
7. Click and drag the Spell Check command from the Command List and drop it onto the My QAT toolbar below the Redo command.



8. In the Search Command List text box, clear the current text and type **publish**.
9. Add the Publish... command above Spell Check command on the My QAT toolbar.

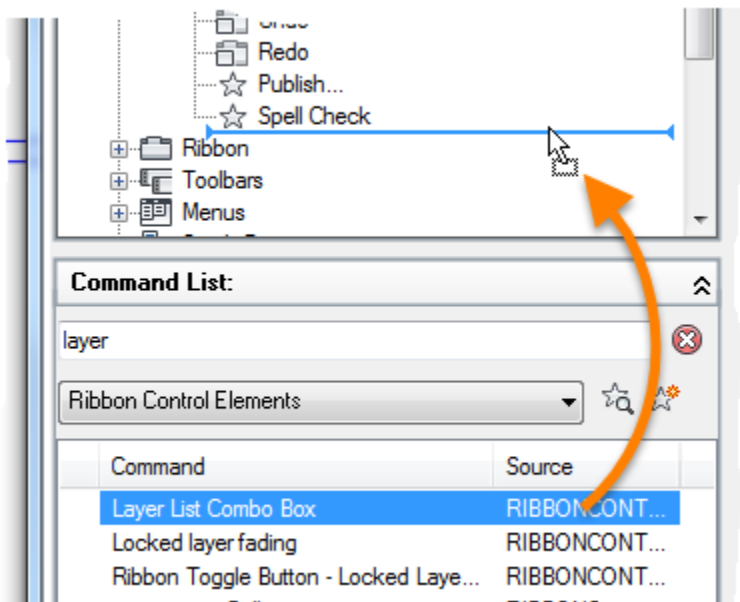


10. Click the Command List drop-down list and choose Ribbon Control Elements.

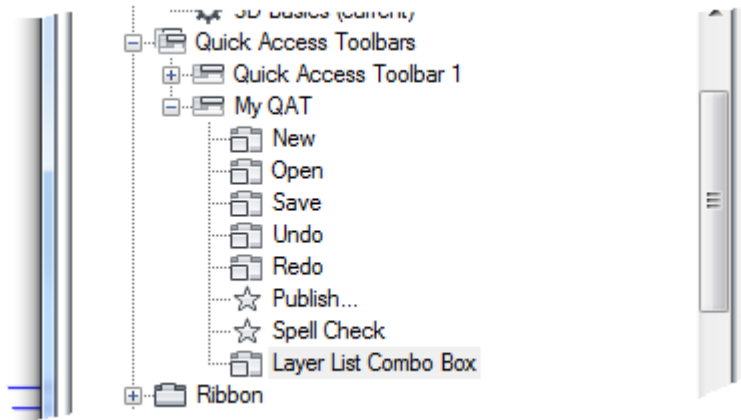


11. In the Search Command List text box, clear the current text and type **layer**.

12. Select the Layer List Combo Box control and add it below Spell Check on the My QAT toolbar.



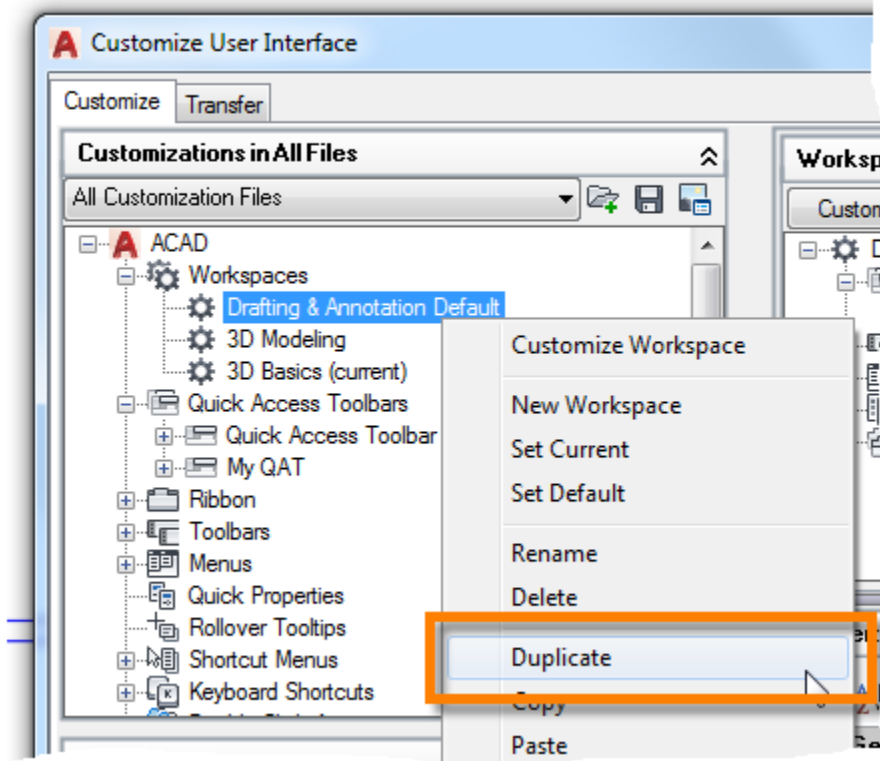
The completed Quick Access toolbar should now look like the following in the CUI Editor:



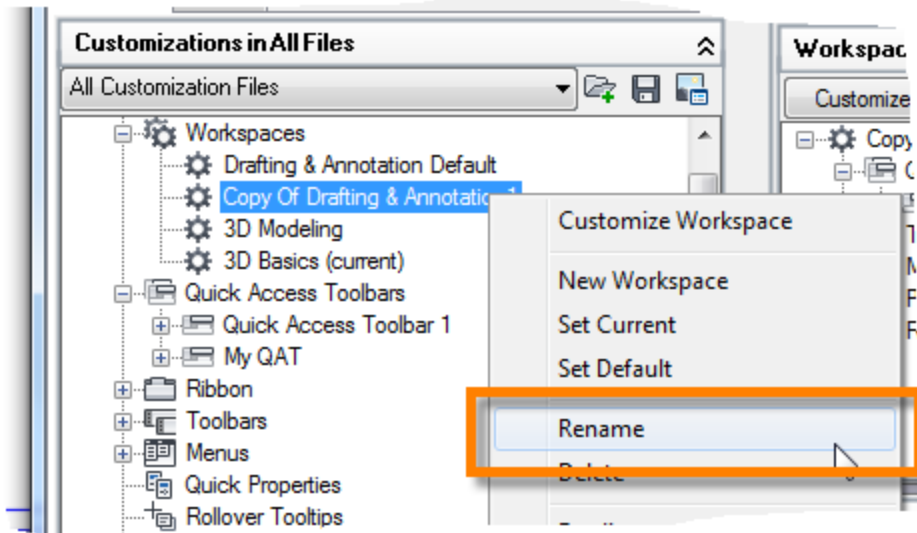
13. Click Apply to save the changes made.

Once the Quick Access toolbar has been created, it must be added to a workspace before it can be displayed in the AutoCAD user interface. These steps explain how to create a copy of an existing workspace and display the My QAT toolbar:

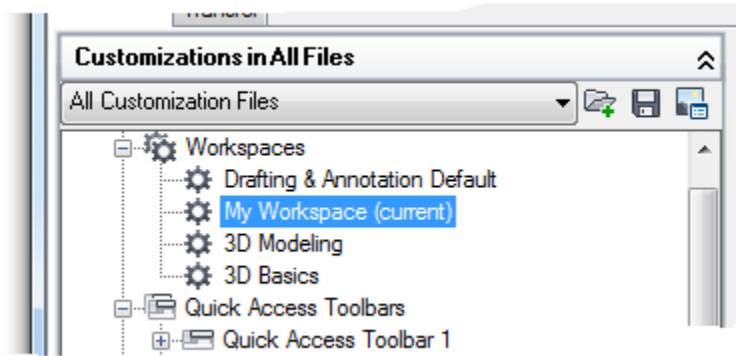
1. In the Customize User Interface (CUI) Editor, Customizations In pane, click the plus-sign next to the Workspaces node to expand it.
2. Right-click over the Drafting & Annotation workspace and choose Duplicate.



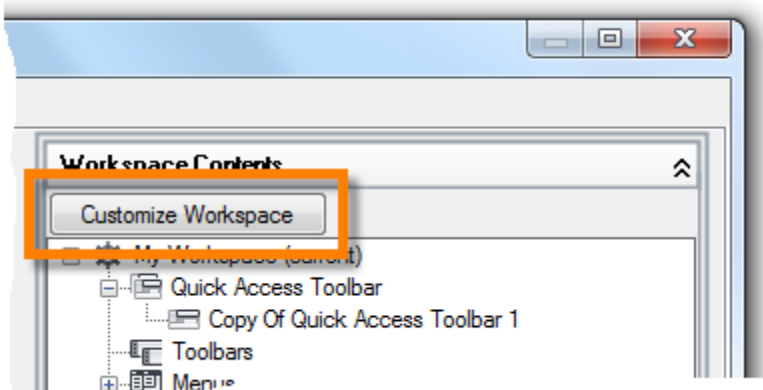
3. Right-click over the new workspace named Copy Of Drafting & Annotation1 and choose Rename.



4. In the in-place editor, type **My Workspace** and press Enter.
5. Right-click over My Workspace and choose Set Current.

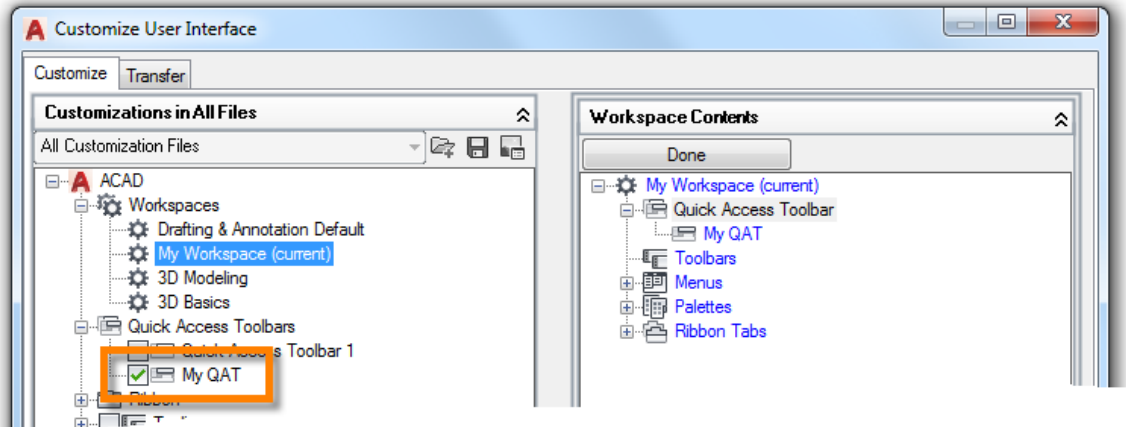


6. In the Workspace Contents pane, click Customize Workspace.



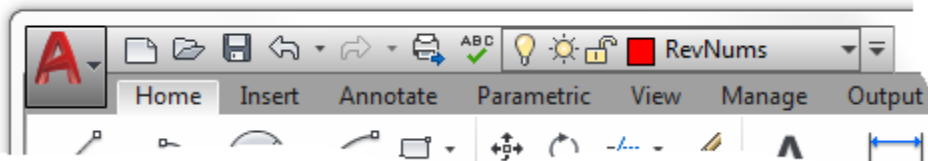
7. In the Customizations In pane, expand the Quick Access Toolbars node and click the checkbox next to My QAT.

My QAT should now be checked.



8. In the Workspace Contents pane, click Done.
9. Click OK to save the changes and exit the CUI Editor.

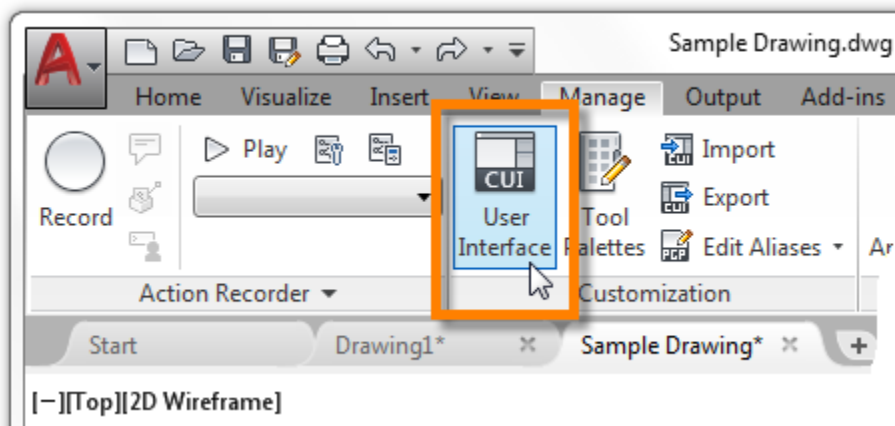
Note: If any message boxes are displayed, click OK to continue loading the changes to the CUIx file.



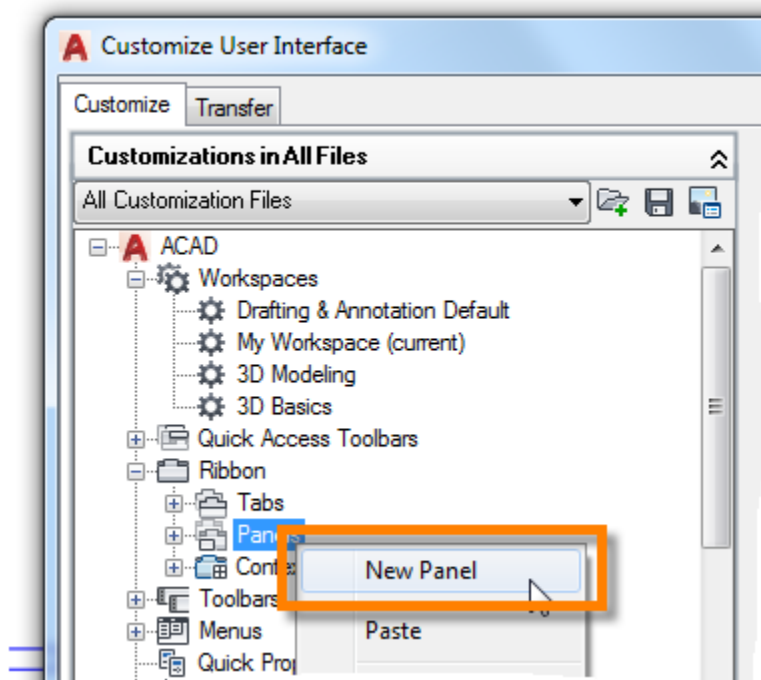
E5 Create a Ribbon Panel and Tab

This exercise explains how to create a new ribbon panel, add commands to a ribbon panel, create a new ribbon tab to display a ribbon panel, and control the display of a ribbon tab with a workspace.

1. In AutoCAD, on the ribbon, click Manage tab ➤ Customization panel ➤ User Interface.



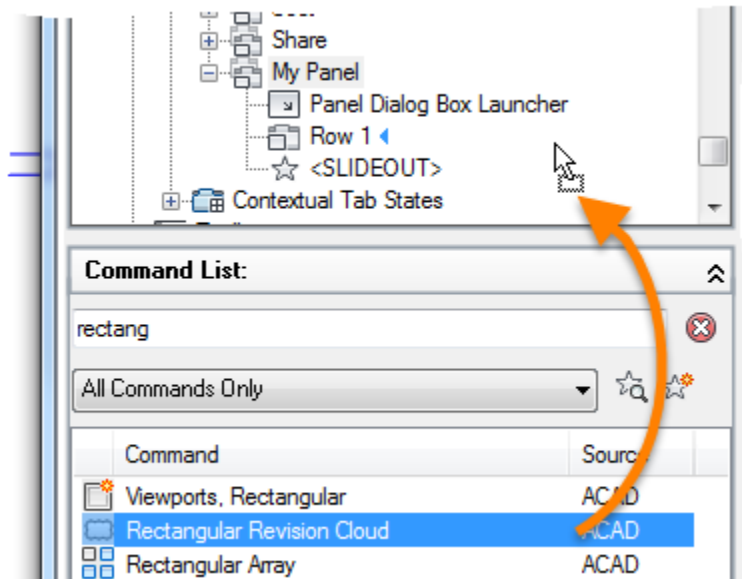
2. In the Customize User Interface (CUI) Editor, Customizations In pane, click the plus-sign next to the Ribbon node to expand it. Right-click the Panels node and choose New Panel.



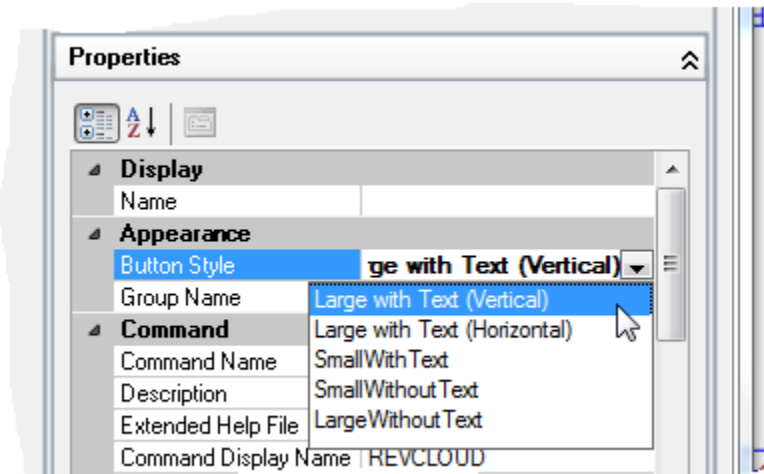
3. In the in-place text editor, type **My Panel** and press Enter.

Note: If you cannot change the panel's name, right-click the new ribbon panel and choose Rename.

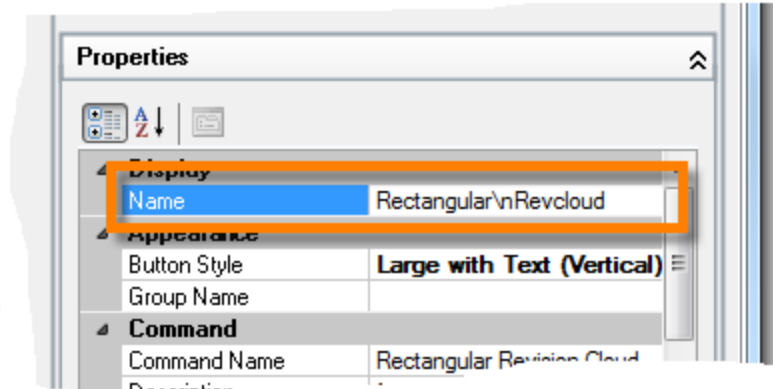
4. In the Command List pane, Search Command List text box, type **rectang**.
5. In the Command List pane, select the Rectangular Revision Cloud command and drag it to Row 1 under the My Panel ribbon panel. Release the mouse button to add the command.



6. Select the Rectangular Revision Cloud command you just added to Row 1 of the My Panel ribbon panel.
7. In the Properties pane, on the right, click the Button Style field and select Large with Text (Vertical) from the drop-down list.



8. Click in the text box to the right of the Name field, and then type **Rectangular\nRevcloud** and press Enter.

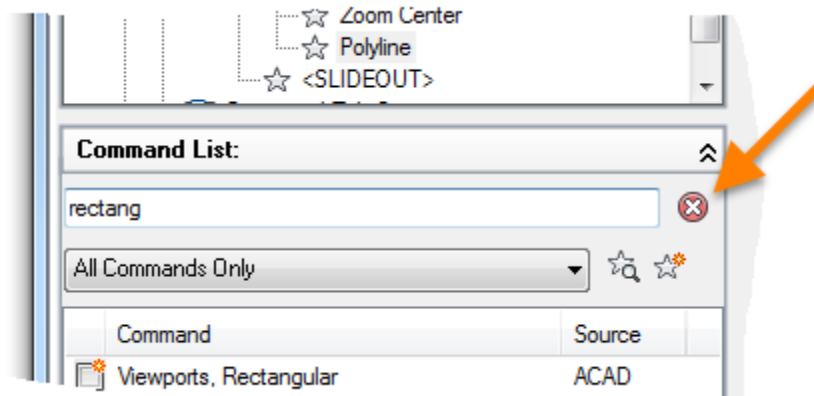


Note: The \n forces the label to be displayed on two lines. The \n will disappear once the field loses focus, but that is okay.

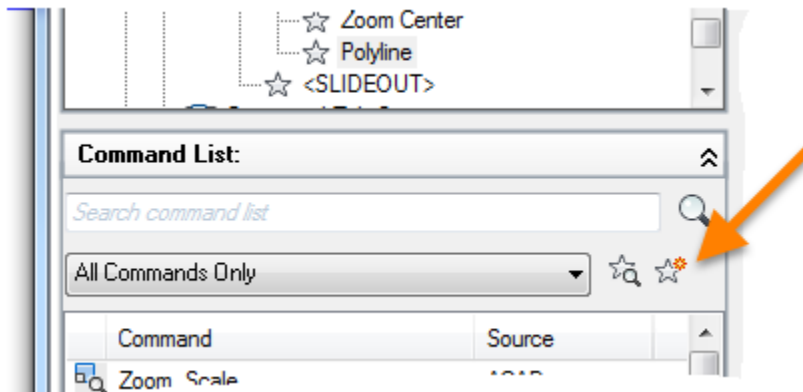
9. Add a few of your favorite commands from the Command List pane to the My Panel ribbon panel and adjust their names and button styles as desired.
10. Click Apply to save the changes.

The following steps explain how to create a custom command and add it to the ribbon panel:

1. In the Command List pane, click Clear to remove any text in the Search Command List text box.



- Click Create a New Command.

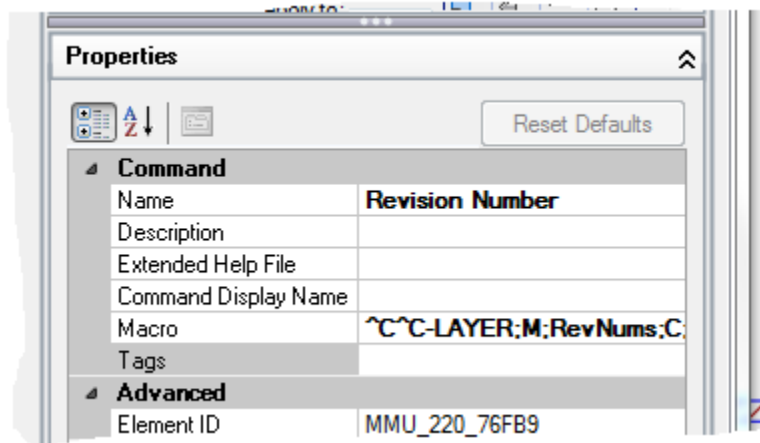


- In the Properties pane, change the following values:

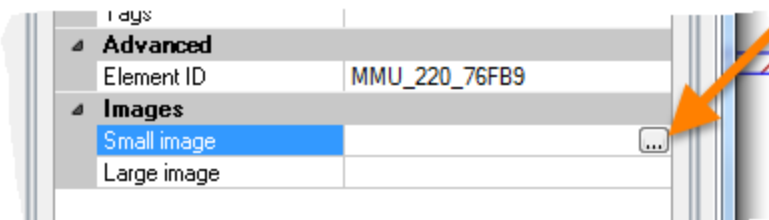
Name: Revision Number

Macro: ^C^C-LAYER;M;RevNums;C;1;;;-INSERT;REVNUM;\1;;0;

Note: Optionally instead of typing the macro string, you can copy and paste the string from the *EX5 - Create a Ribbon Tab and Panel.txt* file located in the *C:\Datasets\Lee Ambrosius\AS122151-L* folder or the folder in which the dataset has been stored.

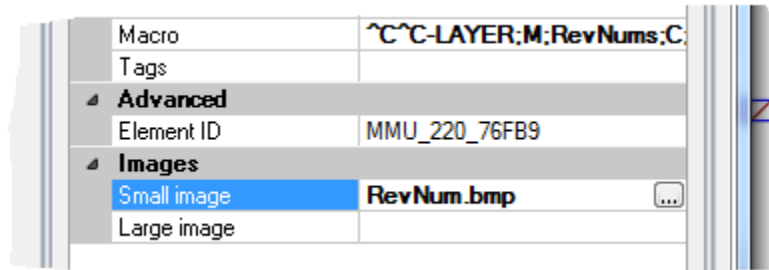


- Click Apply to save the changes to the command.
- In the Properties pane, click in the Small Image field and then click the Ellipsis button [...].

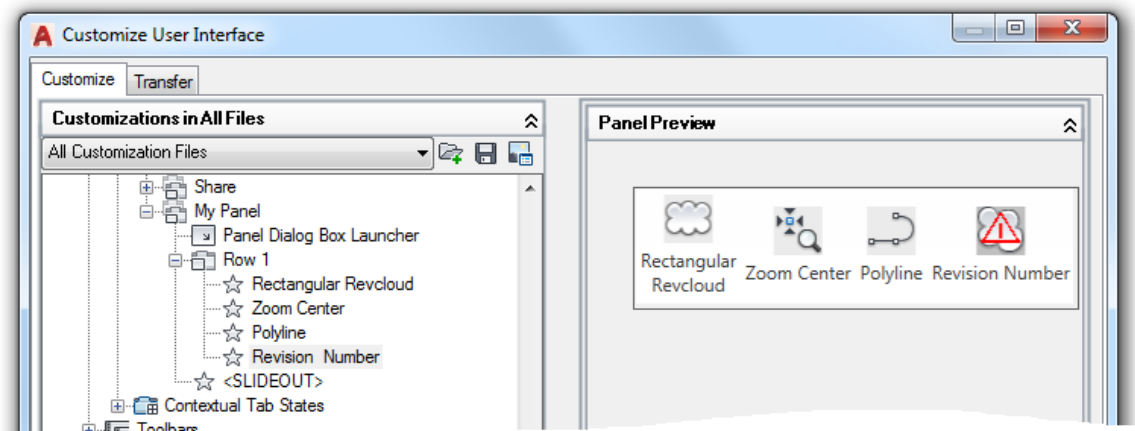


6. In the Select Image File dialog box, browse to **C:\Datasets\Lee Ambrosius\AS122151-L** and select the **RevNum.bmp** file. Click Open.

Note: You might need to browse to a different location based on where the dataset files are stored.



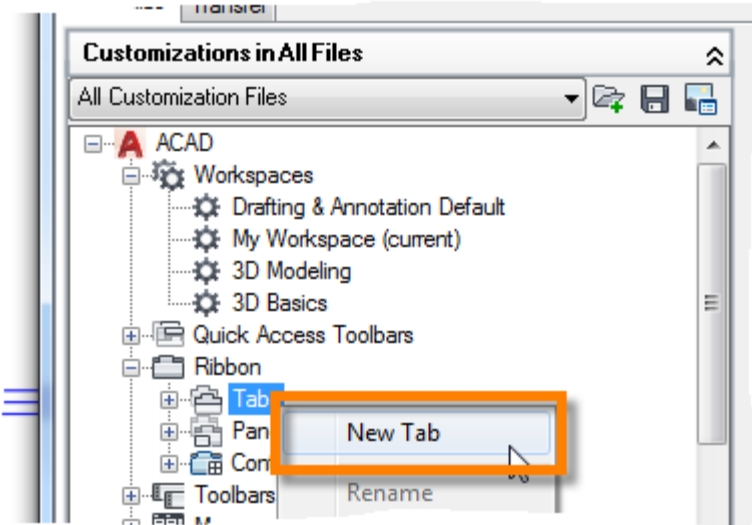
7. Click in the Large Image field and type **RevNum.bmp**.
8. In the Command List pane, select the Revision Number command and drag it to Row 1 under the My Panel ribbon panel.
9. Select the Revision Number command you just added to Row 1 of the My Panel ribbon panel.
10. In the Properties pane, click the Button Style field and select Large with Text (Vertical) from the drop-down list.
11. Click in the text box to the right of the Name field, then type **Revision\nNumber** and press Enter.
12. Click Apply to save the changes.



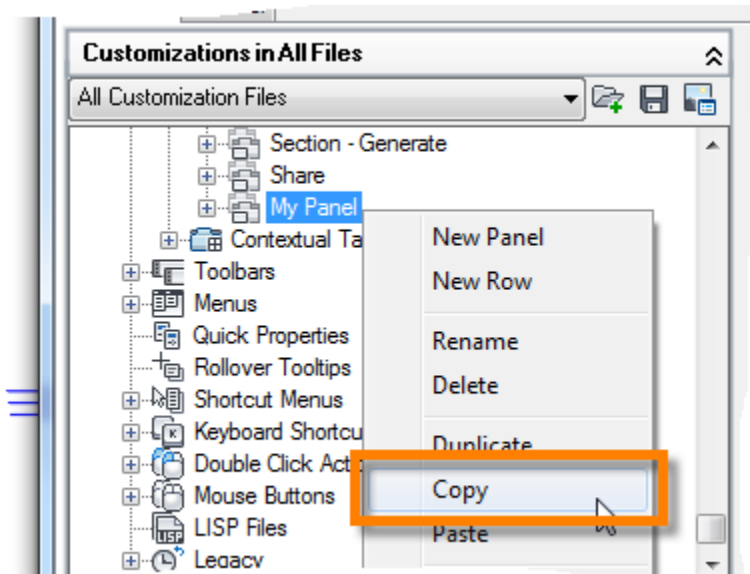
The ribbon panel should include the Rectangular Revision Cloud and Revision Number commands along with any additional commands that you chose to add.

The following explains how to create and customize a ribbon tab:

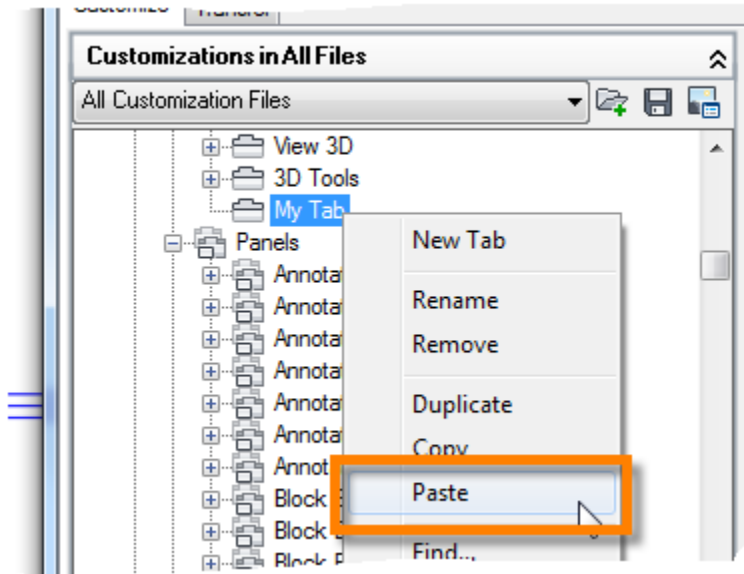
1. In the Customize User Interface (CUI) Editor, Customizations In pane, click the plus-sign next to the Ribbon node to expand it. Right-click the Tabs node and choose New Tab.



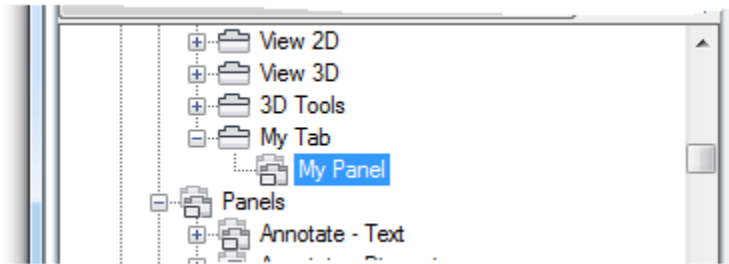
2. In the in-place text editor, type **My Tab** and press Enter.
Note: If you cannot change the tab's name, right-click the new ribbon tab and choose Rename.
3. Expand the Panels node under the Ribbon node if it isn't already expanded.
4. Under the Panels node, right-click over the My Panel node and choose Copy.



- Under the Tabs node, right-click over the My Tab node and choose Paste.



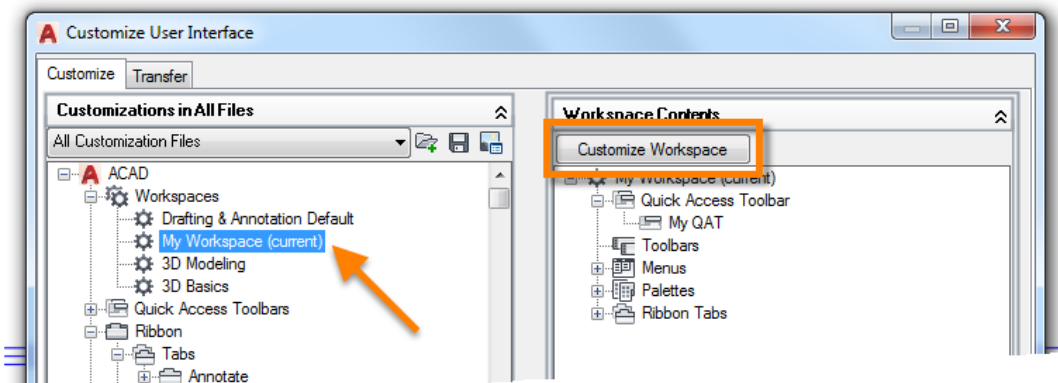
A reference of the My Panel ribbon panel is added to the My Tab ribbon tab.



- Click Apply to save the changes.

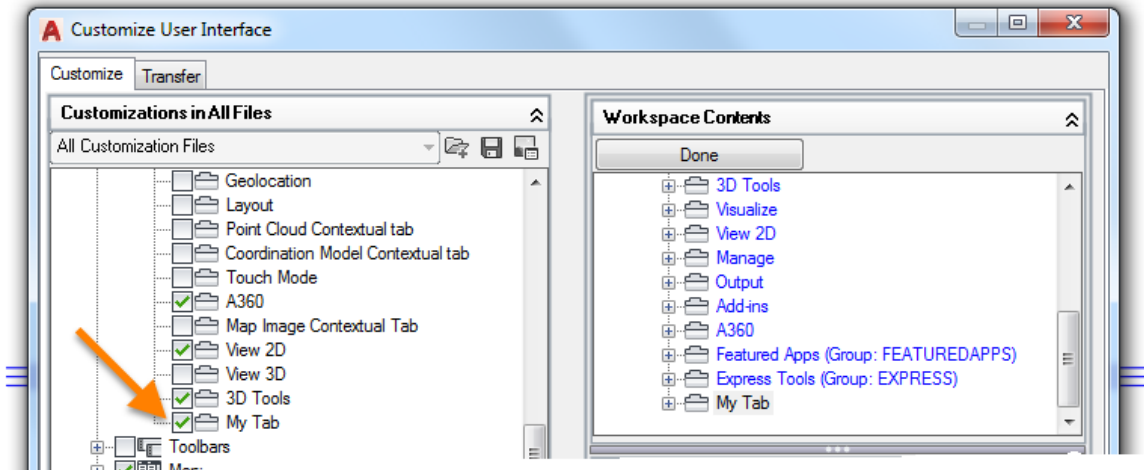
The following explains how to add a ribbon tab to the current workspace:

- In the Customize User Interface (CUI) Editor, Customizations In pane, click the plus-sign next to the Workspaces node to expand it.
- Select the **My Workspace (current)** workspace and click Customize Workspace.

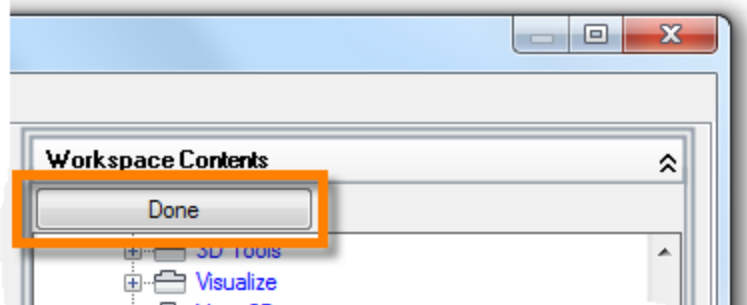


3. In the Customizations In pane, expand the Ribbon ➤ Tabs node and click the checkbox next to My Tab.

My Tab should now be checked and added to the Ribbon Tabs node in the Workspace Contents pane.



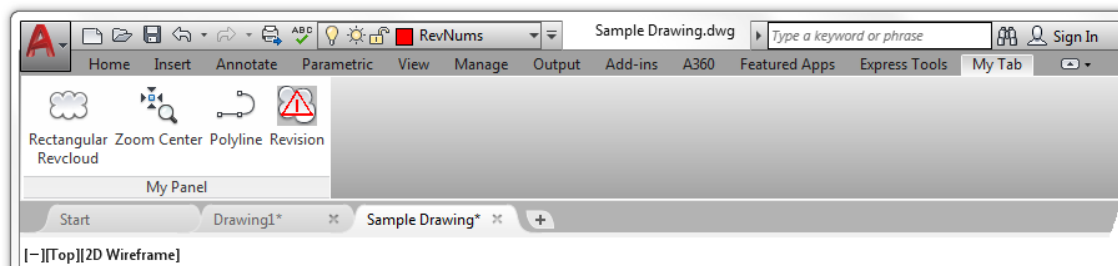
4. In the Workspace Contents pane, click Done.



5. Click OK to save the changes and exit the CUI Editor.

Note: If any message boxes are displayed, click OK to continue loading the changes to the CUIx file.

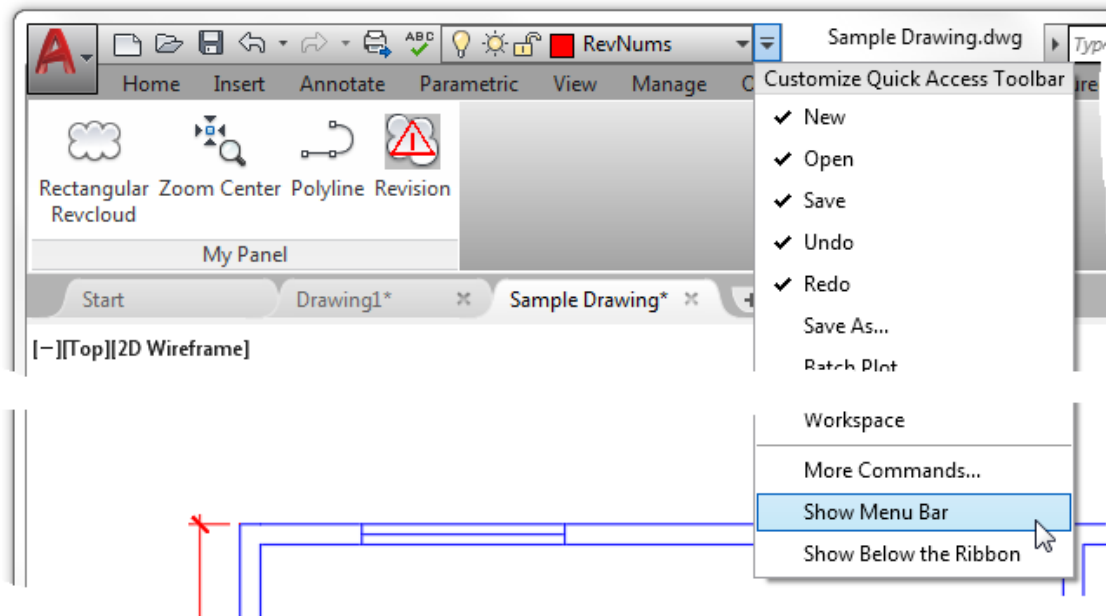
6. On the ribbon, click the My Tab tab to see the commands of the My Panel panel.



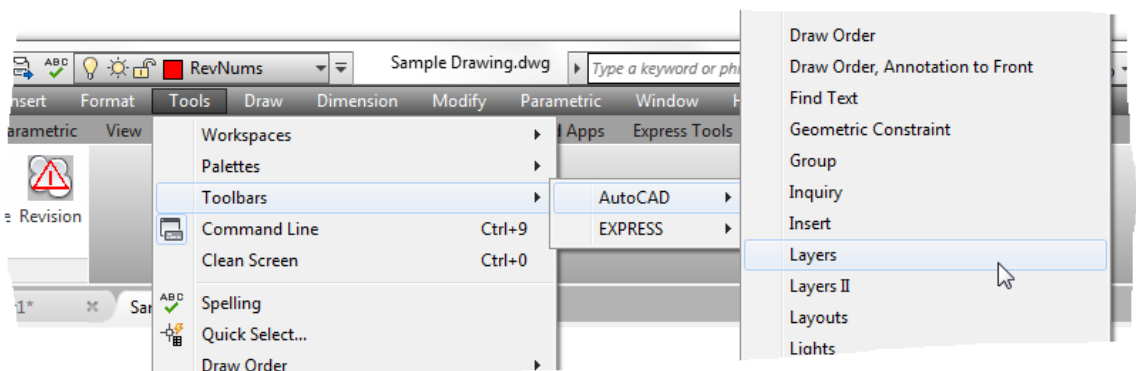
E6 Modify and Create a New Workspace

This exercise explains how to modify a workspace directly in the user interface and save the changes to the current workspace.

1. On the Quick Access toolbar, click the Customize button and then choose Show Menu Bar.



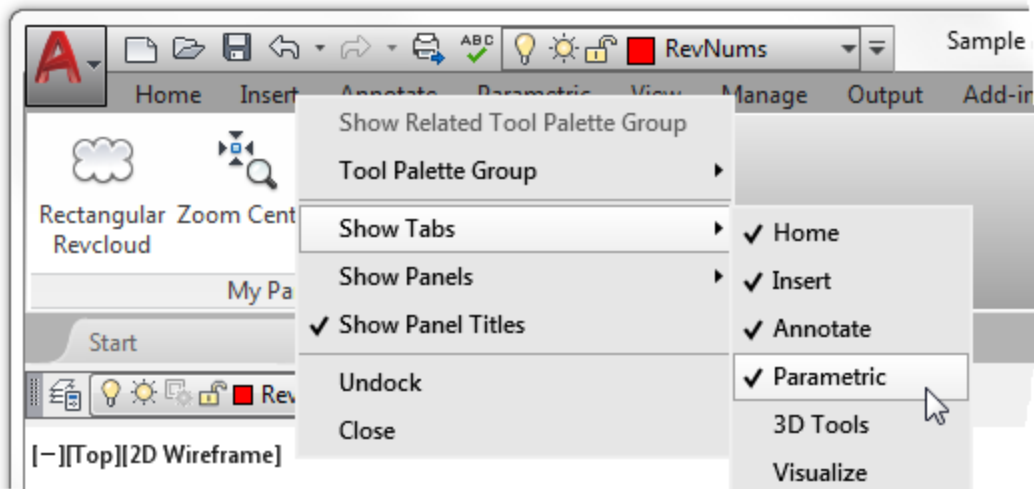
2. On the menu bar, click Tools ➤ Toolbars ➤ AutoCAD ➤ Layers.



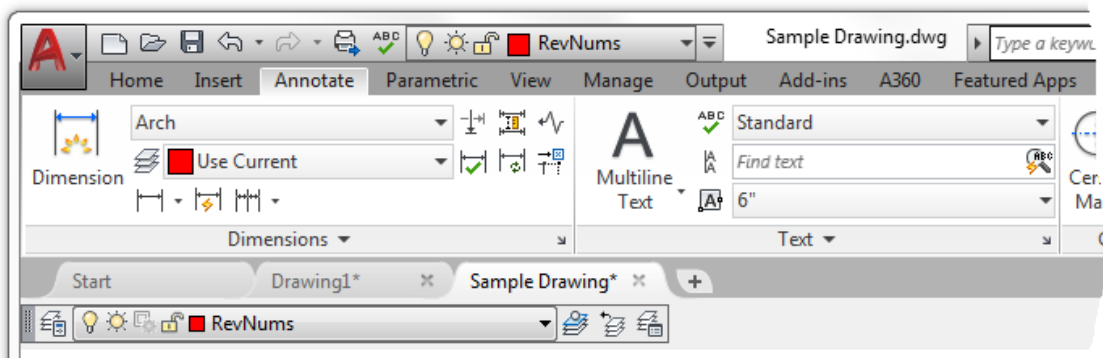
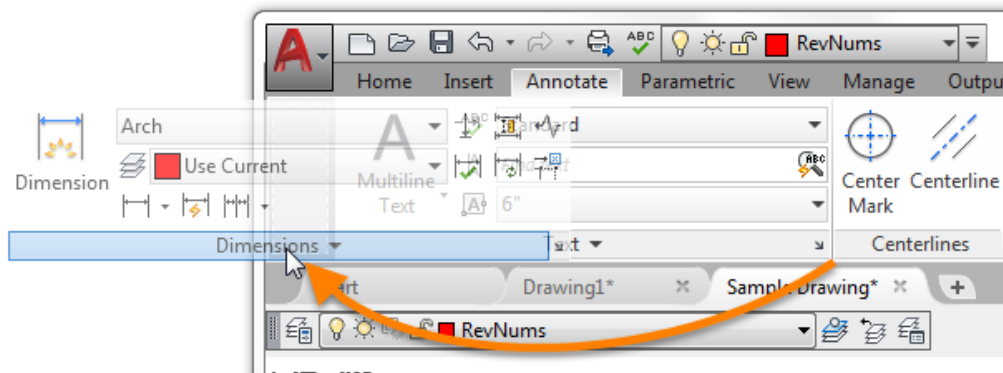
3. On the Quick Access toolbar, click the Customize button and then choose Hide Menu Bar.

4. On the ribbon, right-click over a ribbon tab and choose Show Tabs ➤ Parametric to hide the Parametric ribbon tab.

The Parametric ribbon tab should now be hidden.



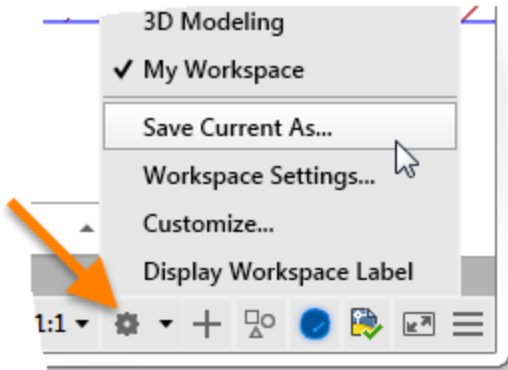
5. On the ribbon, click the Annotate tab to set it current.
6. Click and hold the left mouse button over an empty area of the Dimensions panel and drag it to the left of the Text panel. Release the mouse button to reposition the Dimensions panel.



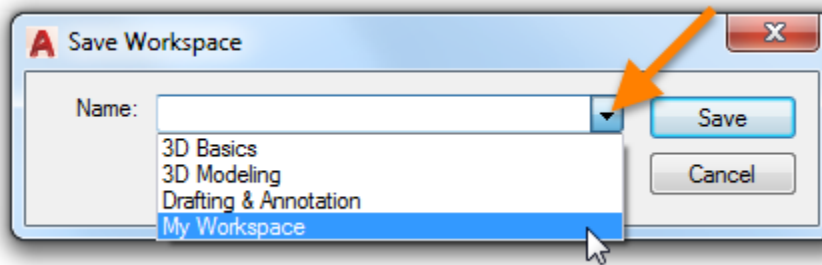
7. On the ribbon, click View tab ➤ Palettes panel ➤ Properties.

The Properties palette should now be displayed.

8. On the status bar, click Workspace Switching ➤ Save Current As.

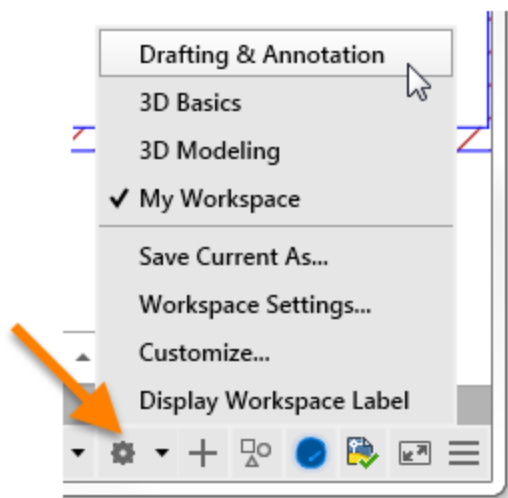


9. In the Save Workspace dialog box, click the drop-down list and select My Workspace.



10. Click Save. When prompted to replace the workspace, click Replace.

11. On the status bar, click Workspace Switching ➤ Drafting & Annotation.





Your custom QAT and ribbon tab should no longer be displayed along with the Layers toolbar and Properties palette, and the Parametric tab should be displayed on the ribbon once again.

12. On the status bar, click Workspace Switching ➤ My Workspace.

Your custom QAT and ribbon tab should be restored along with the other changes you made to the My Workspace.

E7 Reset the AutoCAD Program

This exercise explains how to reset AutoCAD back to its default settings.

1. Close all instances of AutoCAD 2018.
2. Do one of the following:
 - a. On the Windows 7 taskbar, click the Start button ➤ All Programs ➤ Autodesk ➤ AutoCAD 2018 - English ➤ Reset Settings to Default. 
 - b. On the Windows 8 or Windows 10 Start Screen, under the AutoCAD 2018 - English category, click Reset Settings to Default. 
3. In the Reset Settings - Backup dialog box, click Reset Custom Settings.

When back at the office, you might want to click Back Up and Reset Custom Settings to create a ZIP file containing the
4. When the Reset Settings - Confirmation message box is displayed, click OK.