

AS321545

Deploy so fast and easy with PDQ Deploy

Darren Behner
Nelsen Partners

Lex Hansen
PDQ.com

Learning Objectives

- How to locate computers needing missing software
- How to prepare deployments for an office wide rollout
- How to report what deployments completed
- How much time was saved using PDQ

Description

Learn how to deploy in your office and multi-office locations without Microsoft System Center Configuration Manager (SCCM). Discover how to keep track of staff's software versions and patches. Learn how to maximize your current deployment package. Find out how to use new or existing scripts for users. Discover how to see company inventory on the fly. This applies to Revit software, AutoCAD software, Navisworks software, InfraWorks software, 3ds Max software and more.

Speaker(s)

Darren Behner

Started in the industry in 1999, working for small commercial firm doing small scale projects. After 2008 I spent some time on the manufacture side of BIM with Arcadia Inc. In 2015 went back to the Architectural side and am currently the IT / BIM Manager for Nelsen Partners a large scale mixed use / design firm based in Austin, TX. My responsibilities include BIM implementation and training for the firm's Architectural design software, including AutoCAD, Revit and Navisworks.

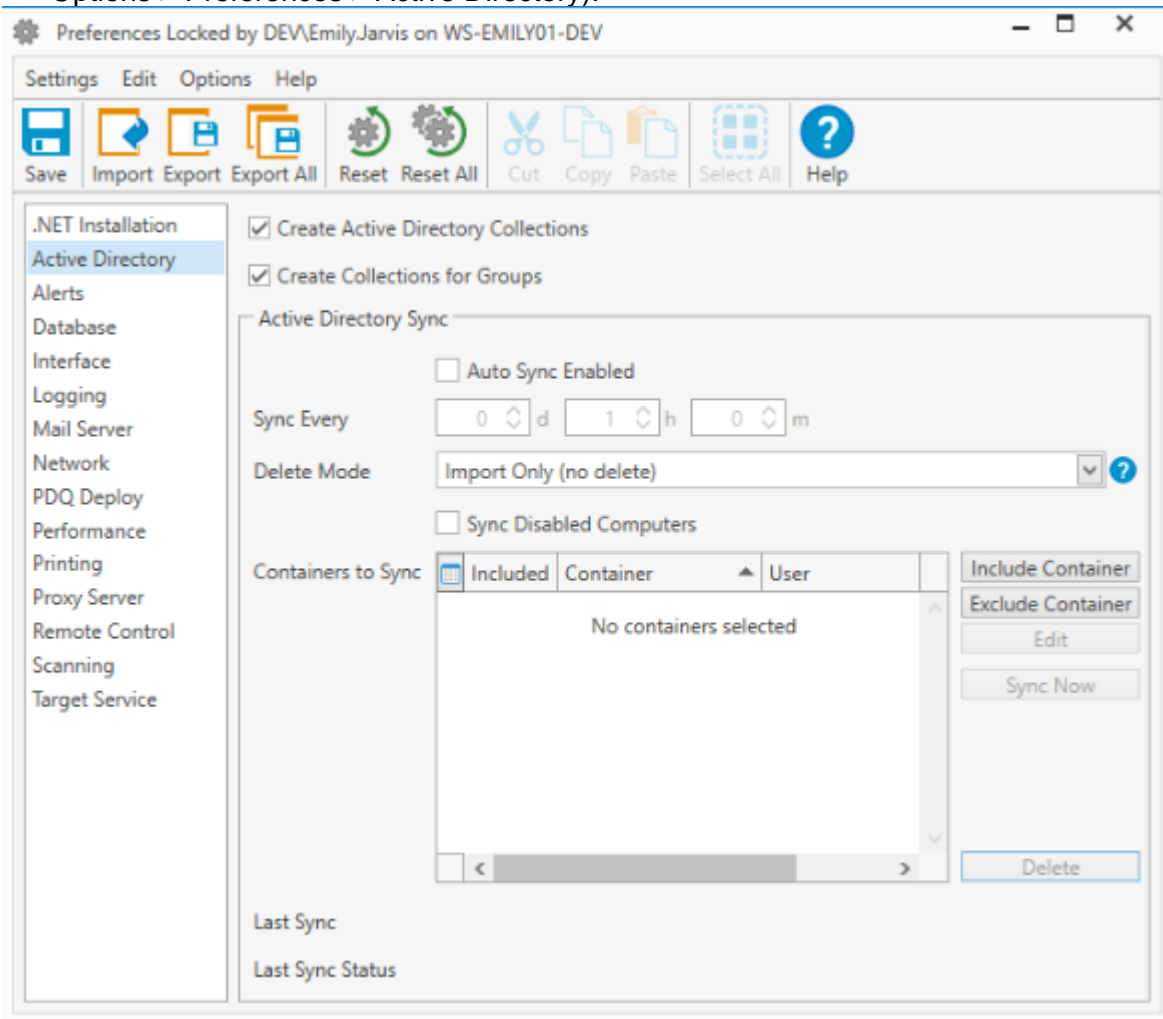
Lex Hansen

Has been in the IT industry for about 20 years and have experience with system administration, programming, networking, and IT management. My passions lie in enterprise systems engineering. My job at PDQ.com is helping system admins automate software installations and third party patch management.

- **How to locate computers needing missing software**

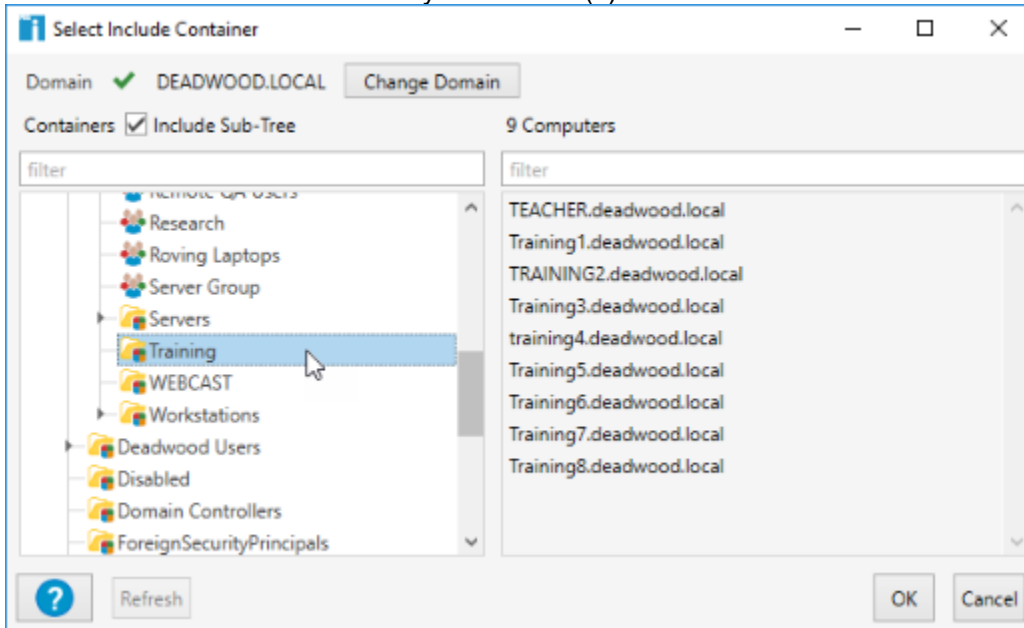
Add Active Directory with Sync:

1. On the Main Console window, click **Add Computers > Active Directory - Sync** on the toolbar (or click **Computer > Add Computers > Active Directory - Sync** or click **Options > Preferences > Active Directory**).



2. Under Active Directory Sync, click **Auto Sync Enabled**.
3. Select the frequency of the sync with **Sync Every**; the default is every hour.
4. Select the appropriate **Delete Mode** from the following:
 - a. **Import Only (no delete)**: Computers deleted (or disabled) from Active Directory will not be deleted from the PDQ Inventory database. They must be manually deleted. (Default delete mode)
 - b. **Mixed Sync (do not delete computers not part of sync)**: Computers that are included in a container and added to the database, but then deleted from Active Directory, will be deleted from the PDQ Inventory database as well. Computers that are added manually to the PDQ Inventory database will not be deleted automatically and must be deleted manually.

- c. **Full Sync (delete all computers not part of your sync)**: Deletes all computers from the PDQ Inventory database that aren't in one of the Include containers, including computers that were added manually or via another source. Use this option to make PDQ Inventory mirror your Active Directory Containers exactly.
5. (Optional) Click **Sync Disabled Computers** to sync computers which are disabled in Active Directory (this is unchecked by default).
6. Click **Include Container** to add your domain(s) to the database.



7. In the Select Include Container window:
 - a) (Optional) To switch to a different domain, click **Change Domain**.
 - b) (Optional) Click **Include Sub-Tree** to display sub-trees (selected by default).
 - c) Browse AD containers.
 - d) Select a container, then click **OK** to add it to the database.
 - e) If you have multiple domains, repeat as needed.
8. (Optional) To exclude containers, click **Exclude Container**, then follow the sub-steps as shown in step 4.
9. (Optional) Set additional Active Directory Sync options as needed.
For details, see the [Active Directory](#) page in Preferences.
10. (Optional) To immediately sync with AD, click **Sync Now**.

NOTE: Additionally, from an elevated command prompt (cmd.exe run as Administrator), you start a sync with the PDQInventory ADSync -StartSync command.

PDQ Inventory adds, scans, and saves your Active Directory computer information to the database.

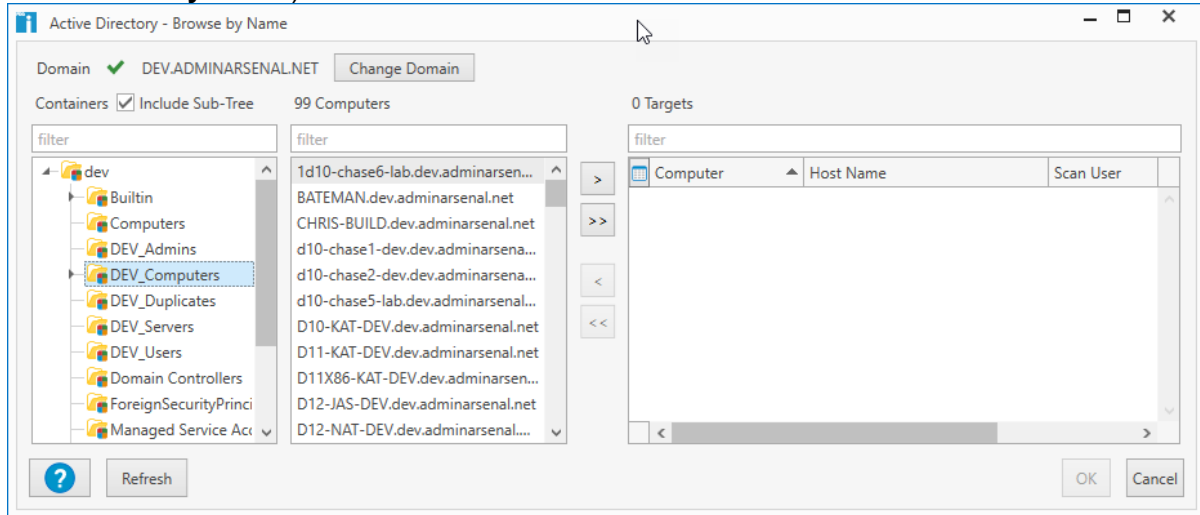
11. When you are done configuring Active Directory Sync, close the Preferences window.
The first auto sync will run as set by the Sync Every interval.

ADD COMPUTERS WITH ACTIVE DIRECTORY - BROWSE BY NAME

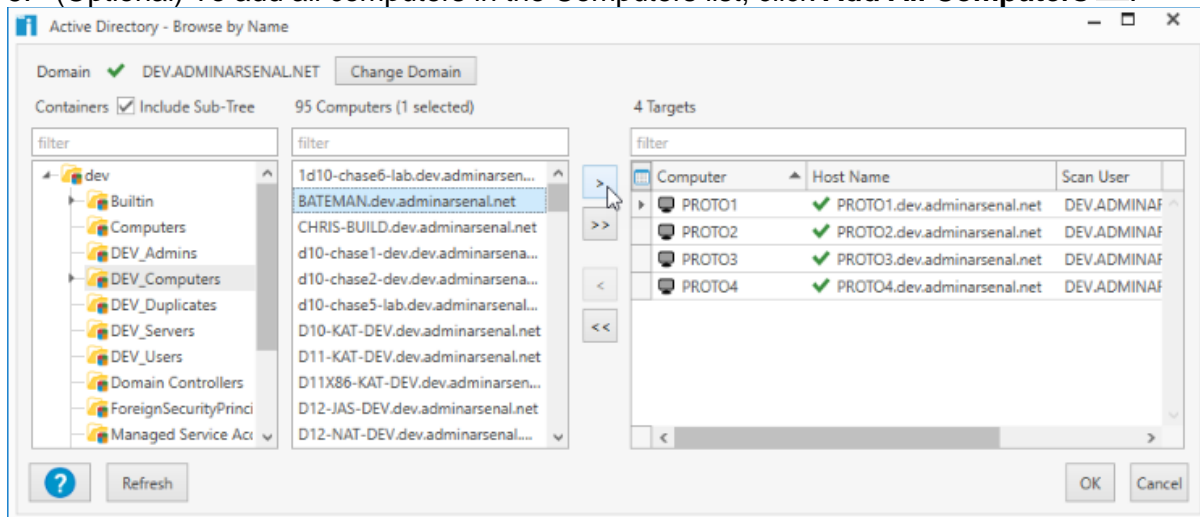
Computers can be added using the Active Directory manually by browsing your AD domains and containers.

To add computers with Active Directory - Browse by Name:

1. On the Main Console window, click **Add Computers > Active Directory - Browse by Name** on the toolbar (or click **Computer > Add Computers > Active Directory - Browse by Name**).



2. Browse AD containers to locate computers.
To switch to a different domain, click **Change Domain**.
3. (Optional) Click **Include Sub-Tree** to display sub-trees (selected by default).
4. Select one or more computers (Shift+click or Ctrl+click), then click **Add Selected Computers** to add them to the target list.
5. (Optional) To add all computers in the Computers list, click **Add All Computers**.



6. When you are finished adding target computers to the list, click **OK**.

Your computers are immediately scanned (with the Default Scan profile) for their hardware, software, and Windows configuration information. PDQ Inventory uses this data to automatically populate the prebuilt collections.

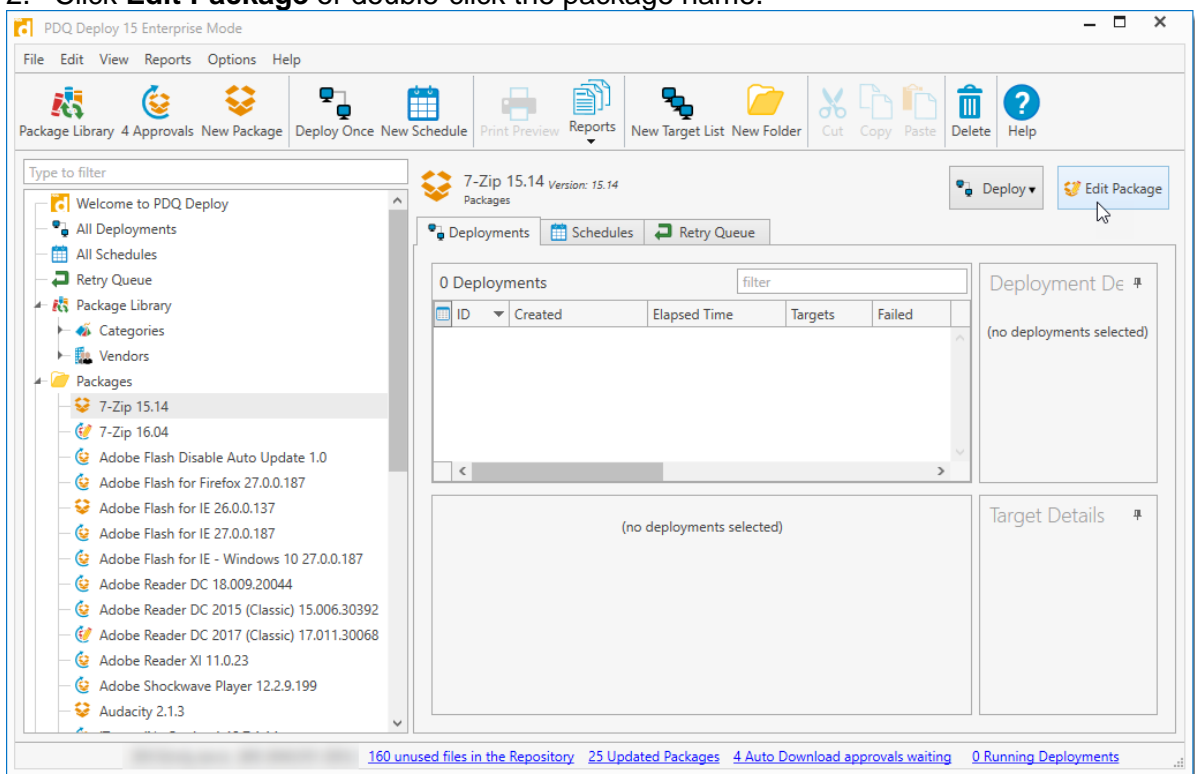
To add computers with different credentials, see [Managing Credentials/Scan Users](#) or [Credentials](#).

• Preparing deployments for an office wide rollout

PDQ Deploy allows you to define deployment parameters on a [global](#), manual ([Deploy Once](#)), [schedule](#), package, or [step](#) level. Deployment settings defined within a package apply to all deployments of that package and they override the global deployment settings defined in Preferences as well as any deployment settings defined at the Schedule level.

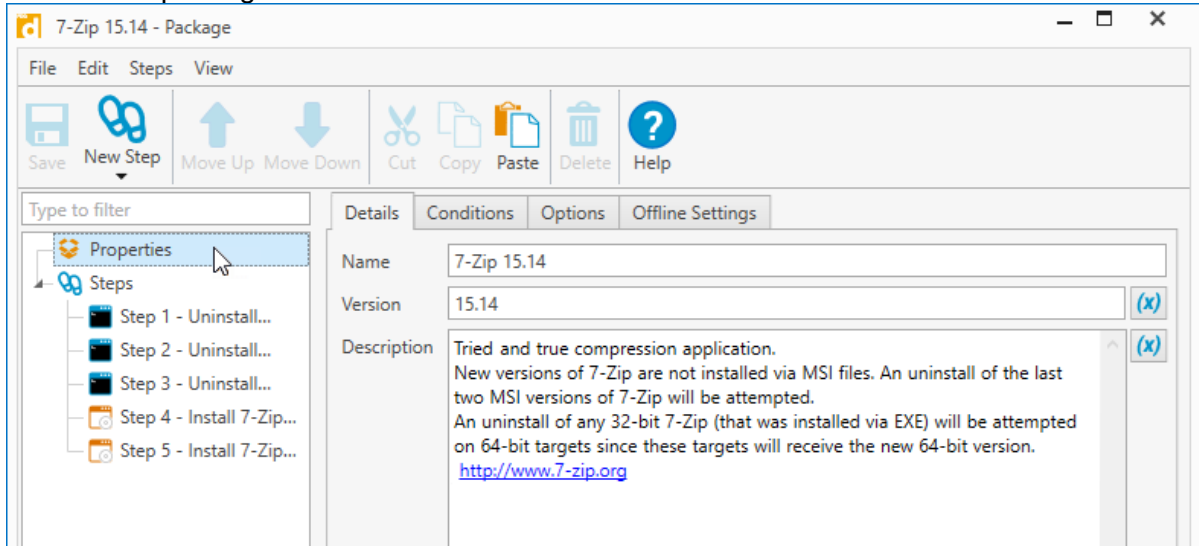
To define deployment settings for a package:

1. In the tree, select the package you want to manage.
2. Click **Edit Package** or double-click the package name.

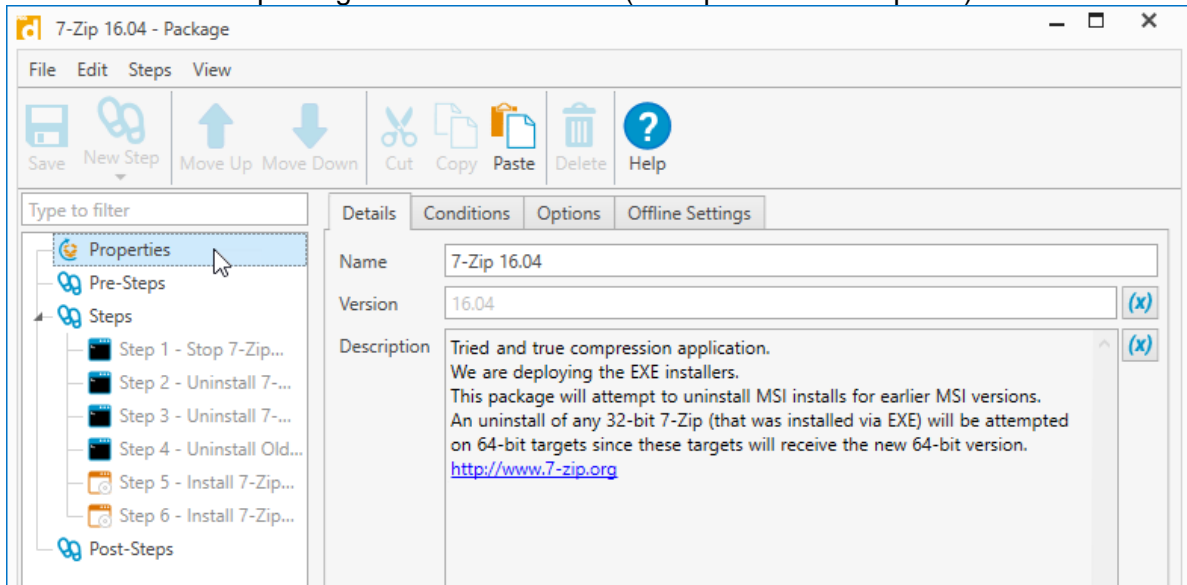


3. Select **Package Properties** in the Step list.

A Standard package will look at follows:



An Auto Download package will look as follows (Enterprise mode required):



4. Click the **Details** tab and define the settings you want to apply to the current package, when finished, click on the [Conditions](#), [Options](#), or [Offline Settings](#) tabs.

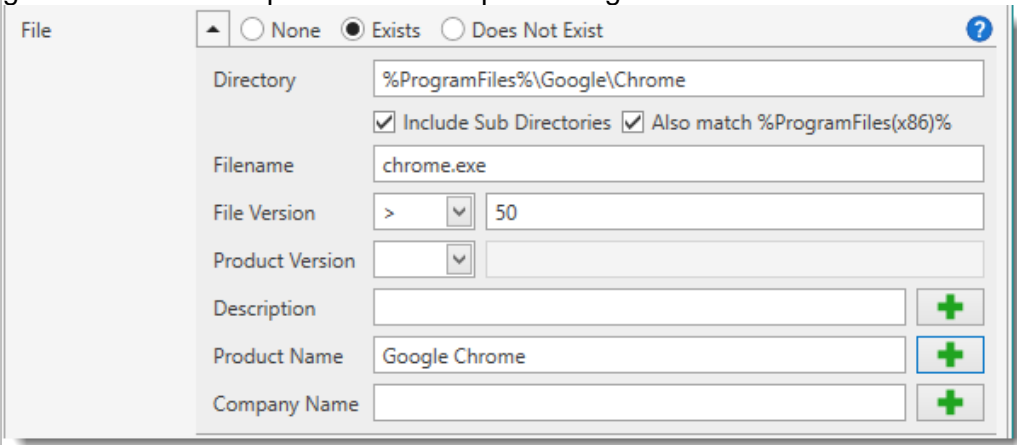

The following table provides information on the **Deployment** settings available in the Details tab:

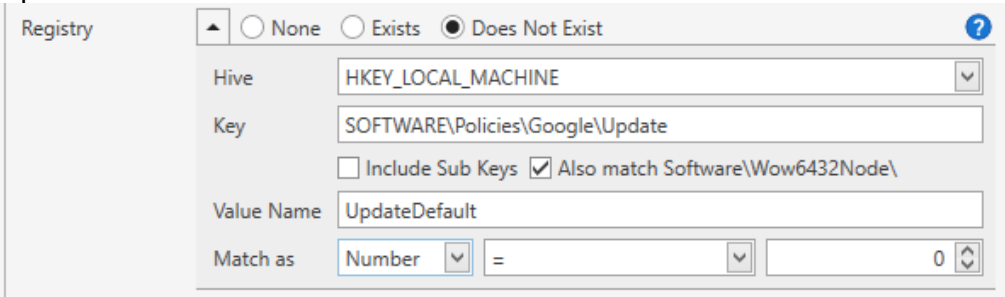

Option	Description
Name	<p>A unique logical name.</p> <p>Use a package name that includes the product, version, and other important information such as architecture (for example, 32 or 64-bit). For additional naming guidance, look at how packages in the Package Library are named.</p> <p>IMPORTANT: For an Auto Download package, in order for the package to display the most up-to-date version number in the tree of the main console, do not change or delete the version number in the Name field. For example, the package 'Adobe Reader DC 17.012.20098', can be changed to 'CEO Reader 17.012.20098'. In order to have the version number display properly in the tree properly, leave a space between the new name and the version number.</p>
Version	<p>The installer version number.</p> <p>This field is primarily used for packages in the Package Library but you are free to use it for custom packages.</p> <p>NOTE: Unavailable for an Auto Download package.</p>
Description	<p>Provide a description with additional, relevant details about the package.</p> <p>For additional guidance, look at package descriptions in the Package Library.</p> <p>NOTE: Unavailable for an Auto Download package.</p>

- Click the **Conditions** tab to define the conditions that must exist for the current package to run. The conditions When finished, click on the [Options](#) or [Offline Settings](#) tabs.

The following table provides information on the **Deployment** settings available in the Conditions tab:

Condition	Description
O/S Version	Select the version or versions of Windows for which the package will be applied.
O/S Architecture	Choose whether the package is to run on 32-bit, 64-bit, or both operating system architectures.
PowerShell version	<p>Select the version or versions of PowerShell for which the package will be applied. (This condition will only appear on the Install and PowerShell steps)</p> <p>IMPORTANT: PowerShell version 1 is not supported in PDQ Deploy</p>
Logged On State	Determines whether or not the package runs, based on whether or not a user is logged on to the target computer.
Always Run	Run the package regardless of logged on state.
Only run if no user is logged on	Only run the package if no users are logged on.
Only run if a user is logged on (including Locked and Disconnected)	Only run the package if a user is logged on, including locked and disconnected sessions.

File	<p>Use this condition if you want to check for files on the target computer before running the package.</p> <p>For example, using the File Exists condition: Run only if Chrome.exe version is greater than 50 and product name equals Google Chrome.</p>  <p>For real life examples of deploying using File or Registry conditions, see the following webcast.</p> <p>VIDEO: PDQ Live! How to Selectively Deploy Applications Using File or Registry Conditions.</p>  <p>(https://support.pdq.com/hc/en-us/articles/231869548)</p>
None	Select to disable the file condition (this is the default selection).
Exists	Select to search for an existing file before running the package.
Does Not Exist	Select to ensure there is no such existing file before running the package.
Directory	<p>Enter the directory where the file exists on the target computer. This directory can include environment variables.</p> <p>NOTE: Environment variables will be evaluated in the context of the Local System rather than the user. For example, the %TEMP% environment variable will evaluate to %SystemRoot%\TEMP instead of %USERPROFILE%\AppData\Local\Temp.</p>
Includes Sub Directories	Check to include all the sub directories of the directory above.
Filename	<p>The name of the file.</p> <p>IMPORTANT: The first filename that is matched will be used. For example, you set a Does Not Exist File condition for C:\Temp\Fancyfile with a version of 1.5. There are two instances of Fancyfile. The File Condition locates the first file,</p>


	Fancyfile version 1.25, thereby returning true (does not exist) even though the other Fancyfile version 1.5 does in fact exist.
File Version	The version of the file from its header, if present. This filter can be equal to, less than, greater than, less than or equal to, greater than or equal to. If left blank, this will disable the file version.
Product Version	The version of the product from its header, if present. This filter can be equal to, less than, greater than, less than or equal to, greater than or equal to. If left blank, this will disable the file version.
Description	The description of the product from its header, if present. Can use the standard * and ? wildcards.
Product Name	The product name of the product from its header, if present.
Company Name	The company name of the product from its header, if present.
Registry	<p>Use this condition if you want to check registry key on the target computer before running the package.</p> <p>IMPORTANT: The registry option does not work for data that spans multiple lines.</p> <p>For example, using the Registry Does Not Exist condition: Run only if UpdateDefault value of 0 does not exist.</p>  <p>For real life examples of deploying using File or Registry conditions, see the following webcast.</p> <p>VIDEO: PDQ Live! How to Selectively Deploy Applications Using File or Registry Conditions.</p>  <p>https://support.pdq.com/hc/en-us/articles/231869548</p>
None	Select to disable the registry condition (this is the default selection).
Exists	Select to search for an existing registry keys before running the package.
Does Not Exist	Select to ensure there is no such existing registry keys before running the package.
Hive	Choose between HKEY_LOCAL_MACHINE, HKEY_CLASSES_ROOT, and HKEY_USERS.


Key	Path of the key to look in.
Include Sub Keys	Looks also in all sub keys.
Value Name	<p>Name of the value to match against. If the value name is left blank then the value of the key itself will be used.</p> <p>IMPORTANT: The first value name that is matched will be used. For example, using the Exists registry condition you search for printer IP addresses in HKLM\SYSTEM\CurrentControlSet\Control\Print\Printers with a 'port' value that contains the IP address of 192.168.0.100. Printer A is a software printer with a port in C:\ProgramData\PrintProgram\PortFile. Printer B has the port of 192.168.0.100. Because Printer A's 'port' value is listed first, that is the value that is returned, hence the condition is false, even though Printer B's port matches the condition.</p>
Match as	<p>The type of matching to use on the value. Choose between Text, Number, and Version. Choose the condition and enter the applicable value.</p> <p>IMPORTANT: The registry option does not work for data that spans multiple lines.</p>
PDQ Inventory Collection	<p>Use this condition if you want to make sure a target computer is or is not a member of a certain collection in PDQ Inventory before running the package.</p> <p>IMPORTANT: This requires both PDQ Inventory and PDQ Deploy in Enterprise mode. For the integration to work properly with Central Server, both products will need to be installed on the same console with both running in either Server mode or Client mode.</p>
None	Select to disable the collection condition (this is the default selection).
Is A Member	<p>Select to ensure the target computer is a member of the selected collection before running the package.</p> <p>IMPORTANT: Using this condition does not prompt PDQ Inventory to do a scan of the collection at the time of the deployment. The membership of the selected collection is only as good as the last scan.</p>
Is Not A Member	<p>Select to ensure the target computer is not a member of the selected collection before running the package.</p> <p>IMPORTANT: Using this condition does not prompt PDQ Inventory to do a scan of the collection at the time of the deployment. The membership of the selected collection is only as good as the last scan.</p>
Collection	Click Select Collection to browse your PDQ Inventory collections and select the collection to use. Click OK once the collection is selected.

6. Click the **Options** tab and define the settings you want to apply to the current package, when finished, click on the [Offline Settings](#) tab.

The following table provides information on the **Deployment** settings available in the Options tab:

Option	Description
Copy Mode	Defines how PDQ Deploy copies deployment files to target computers (requires Enterprise mode).

	<p>When files (such as installation files) are copied to a target, PDQ Deploy can use either Push or Pull Copy Mode. By default, PDQ Deploy uses Push Copy Mode.</p> <p>You can change the default Copy Mode in Preferences > Performance or override the default here. See Copy Mode in Performance Preferences for more information.</p> <p>VIDEO: PDQ Live! Understanding Push and Pull Deployments</p>  <p>https://support.pdq.com/hc/en-us/articles/220538467</p>
Push	<p>Copies files to the target computers from the PDQ Deploy computer. This method is best if the package's install files are located on the PDQ Deploy computer.</p> <p>This option is the default copy mode.</p> <p>Bandwidth throttling applies to all simultaneous file copies combined.</p>
Pull	<p>Sends lists of files to the target computers which then pull the files from a centralized location. This method works best in WAN environments where the files may be on a file server closer to the target computers than the computer where PDQ Deploy is running.</p> <p>For this method to work, all files need to be accessible using a UNC path (e.g. \\server\share\installer.msi).</p> <p>WARNING: Files on fixed or mapped drives are not accessible to the target computers; therefore, a valid UNC path must be provided.</p> <p>Note Bandwidth throttling is <i>not</i> enforced when using Pull Copy Mode.</p> <p>IMPORTANT: This setting is available only in Enterprise mode.</p>
Scanning	<p>Select whether or not PDQ Inventory scans target computers after a deployment to identify what is installed on each computer. If you have a package that doesn't install an application, you may want to disable inventory scanning for the package.</p> <p>IMPORTANT: This feature is available only in Enterprise mode and also requires PDQ Inventory in Enterprise mode. If you are running in Client Mode, PDQ Inventory must be installed on the computer running in Server Mode. Additionally, the target computer must already be in PDQ Inventory with a name or hostname that matches the name used in PDQ Deploy.</p> <p>Set the Program Default in Preferences > Deployments or override the default here.</p>

Scan after Deployment	<p>Initiates an inventory scan from PDQ Inventory after a deployment to identify what is installed on each workstation.</p> <p>Scan after Deployment attempts to scan target computers even if deployments fail.</p> <p>This feature can be very helpful in maintaining up-to-date inventory for target machines. The target computers must already be in PDQ Inventory with names or hostnames that match the names used in PDQ Deploy.</p> <p>You may choose which Scan Profile to use. The default Scan Profile is defined in PDQ Inventory in Preferences > Scan Profiles. You can choose to scan with any Scan Profile that has been configured in PDQ Inventory. It is common to use either the Applications or Standard scan profiles.</p>
Do Not Scan	Does not scan target computers after deployment .
Run As	<p>During a deployment, a Windows service is created on the target computer. The Run As setting determines how this service "logs on" after it is created.</p> <p>The default (and generally appropriate) setting is Deploy User. Change the default in Preferences > Deployments or override the default here. For a sample demonstration of the Run As options, see the following video.</p> <p>VIDEO: Deployment Run As Options</p>  <p>(https://support.pdq.com/hc/en-us/articles/220538547)</p>
Deploy User	<p>Executes deployments on target computers in a non-interactive session as the Deploy User.</p> <p>This setting is appropriate for the vast majority of deployments. Consequently, this is the recommended setting.</p>

Deploy User (Interactive)	<p>Executes deployments that include both silent and interactive steps. This setting is the same as Deploy User with one important exception—the Windows process running the deployment is run in an interactive session.</p> <p>This setting is most appropriately used for individual deployments that require user input, but the overall process still requires Administrator rights that logged on users may not have. Because these types of deployments are more specialized and because running the deployment in interactive mode requires more processing resources, it is recommended that you apply this setting only as needed at the Package level.</p> <p>IMPORTANT: This feature is available only in Enterprise mode.</p>
Local System	<p>Executes deployments using the Local System account on the target computer. PDQ Deploy connects to the target computer using the Deploy User credentials, copies the specified files, creates the PDQDeployRunner service, then instructs the service to log on as Local System.</p> <p>This setting is used only for installations that require Local System. These types of deployments are very rare. Consequently, it is recommended that you apply this setting only as needed at the Package level.</p> <p>IMPORTANT: Packages that run as Local System are not able to access network resources.</p>
Logged on User	<p>Attempts to run packages in interactive mode as the Logged On User of the target machine.</p> <p>This setting is used to deploy applications that are installed per user or when the Logged on User needs to provide information for the deployment to succeed such as a license key. It can also be used to modify the HKEY_CURRENT_USER registry hive for the Logged on User or to access user-specific settings such as %APPDATA% or the Logged on User's user directory. These types of deployments are highly specialized. Consequently, it is recommended that you apply this setting only as needed at the Package level.</p> <p>IMPORTANT: This feature is available only in Enterprise mode.</p>
Timeout	<p>Specifies how many minutes the deployment runs before being timed out by the server (requires Enterprise mode to modify this setting). The default value is 60 minutes.</p> <p>This timeout applies only to the duration of a deployment to a target computer. The timeout does not include the initial process of copying installation files to the target.</p> <p>Change the default in Preferences > Deployments options or override the default here.</p> <p>It is best practice to set the shortest timeout interval as the global default in Preferences and increase the timeout interval in individual packages. For example, if you typically deploy small packages such as browser, Java, or Adobe reader updates, you may choose to set the global timeout interval to 20 minutes. You could then increase the</p>

		timeout interval for individual packages that take longer to install, such as a Windows Service Pack or a package containing many nested packages.
Auto Download		<p>Select the approval settings used for downloading new versions of the package.</p> <p>The default settings for Auto Download can be modified in Preferences > Auto Download.</p> <p>IMPORTANT: Auto Download settings are only available to an Auto Download package. If the package is Standard, or has been converted to Standard, these options will not be visible.</p>
	Manual	<p>New package versions require manual approval before they download.</p> <p>NOTE: Use this option to disable Auto Download without converting to a Standard Package.</p>
	Immediate	New package versions are immediately approved.
	Automatic	<p>Sets the interval in days and hours after which new versions are automatically approved.</p> <p>This is enabled by default with a setting of 7 days.</p>
Convert to Standard Package		<p>Use this to convert to a Standard package that will no longer auto download new versions. Once converted all Pre and Post Steps will be converted to regular steps.</p> <p>WARNING: This option cannot be undone.</p>

- Click the **Offline Settings** tab and define the settings you want to apply to the current package.

The following table provides information on the **Deployment** settings available in the Offline Settings tab:

Option	Description
Offline Status	<p>Select whether or not target computers will receive a ping or Wake-on-LAN prior to deployment.</p> <p>The default settings for Offline Status can be modified in Preferences > Deployments.</p>
Use settings from Preferences	<p>Uses the global Offline Status settings defined in Preferences.</p> <p>When you select this option, the subsequent settings are disabled.</p>

Ping before deployment	<p>Performs a ping (ICMP echo) before attempting the deployment. If the target does not respond to the ping within 2 seconds, then the deployment is not attempted on that target.</p> <p>Enabling this option can increase the overall speed of the deployment because PDQ Deploy doesn't waste time with offline computers.</p> <p>NOTE: Typically, the ping should take only a few milliseconds. However, if your DNS isn't solid or your network is experiencing latency issues, then the ping response may take more than 2 seconds.</p> <p>When this is <i>not</i> selected, PDQ Deploy attempts the deployment regardless of the online or offline status of the target computer. If the target is offline or otherwise unavailable, then Windows will timeout after ~60 seconds. Leaving this unchecked can decrease the overall speed of the deployment.</p>
Send Wake-on-LAN and attempt deployment	<p>Attempts the deployment then sends a Wake-on-LAN to offline target computers. The deployment is attempted again if it comes online. After 5 minutes if the computer is still offline, the deployment will be attempted again.</p> <p>The advantage of this feature is that offline computers can immediately be made available for deployment. However, it can increase deployment time.</p> <p>IMPORTANT: This feature is available only in Enterprise mode of both PDQ Deploy and PDQ Inventory. Furthermore, PDQ Inventory must have the MAC address of the target computers' NICs.</p>
Retry Queue	<p>Enable or disable the Retry Queue and modify the number of retries for the package.</p> <p>The default settings for Retry Interval, and several other settings for offline computers, can be modified in Preferences > Deployments.</p> <p>IMPORTANT: Requires Enterprise mode to use Retry Queue settings.</p>
Use settings from Preferences	<p>Uses the global Retry Queue settings defined in Preferences.</p> <p>When you select this option, the subsequent Retry Queue settings are disabled.</p>
Put Offline Targets in Retry Queue	<p>Enables the Retry Queue. By default, target computers that are unreachable or offline during a deployment are held in the Retry Queue and deployment is retried.</p> <p>The advantage of this feature is that offline computers are automatically queued for re-deployment. This simplifies the process of ensuring that critical updates are deployed to all target computers. It is recommended that you enable this option per package rather than applying it globally in Preferences.</p> <p>TIP: Some packages with specific, non-critical functions should not use the Retry Queue. For example, it is not advisable to use this option with a package that only reboots target computers because offline computers were probably turned off to begin with and, depending on the target computers' availability, PDQ Deploy may reboot users' computers at inopportune times.</p>


Allowed Retries	Sets the number of retry attempts for an offline computer. This applies per target per deployment. The default setting is 72. To set unlimited retries, set this value to 0.
-----------------	---

8. Once the settings are complete, click  **Save** on the toolbar.

Report what deployments completed

You can create PDQ Inventory **Reports** from any dynamic collection.

To create a report from a dynamic collection:

1. On the main console window tree, select a dynamic collection .
2. Click **Reports > New Report > From Collection** (or right-click, then select **Reports > New Report > From Collection**).

A new **Report** window opens using the Define **Report** button, with the same name and description as the collection it's based on.

Most importantly, the new **report** contains the filters from the collection.


3. Click **Save**  (or press **Ctrl+S**).

As you progress through the **report** configuration process, you should periodically save changes.

The new **report** is added to **Reports** on the main console tree. You can create custom **report** folders and move **reports** in them. For details, see [Custom Report Folders](#).

4. Complete the **report** configuration, to do the following:
 - Details (optional): Edit the name and description if needed.
 - Columns: Add the data you want in the **report**.
 - Filters (conditional): Edit the filters if you need to change the filter configuration inherited from the collection.
 - Auto **Reports** (optional): Configure auto **reports** if you want the **report** to automatically run on schedules.

For configuration details, see [Creating Basic Reports](#).

5. When you are finished configuring your **report**, click **Save**  (or press **Ctrl+S**), then close the window.

• How much time was saved using PDQ

This is subject to your scale so mileage may vary. In our case we are averaging 12 hours a week of savings. However, during rollout times, it is much higher. I have included an excel spreadsheet with a range of 6 months' worth of deployments you can use to determine how it could help you.