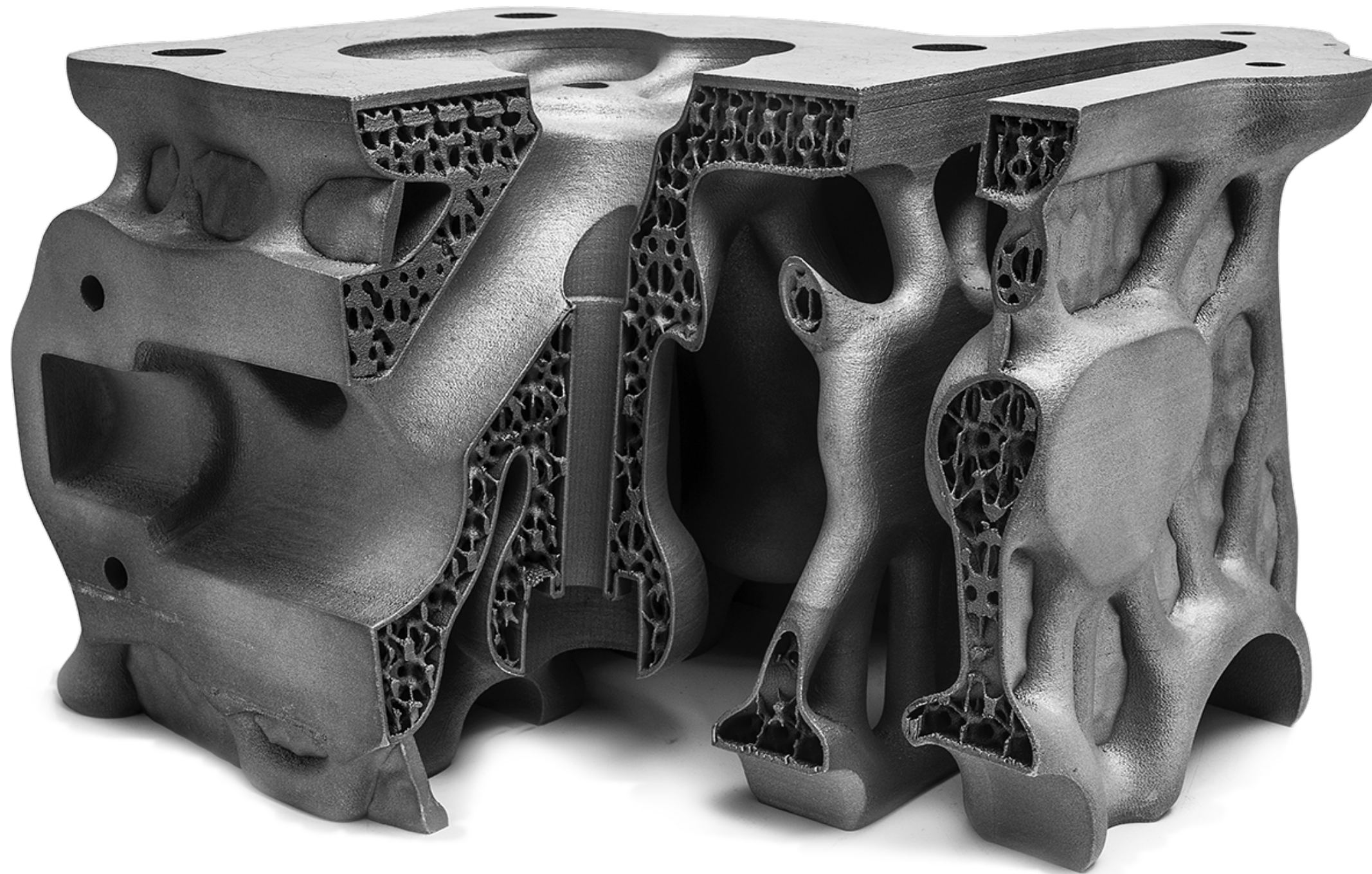




Future of Additive Manufacturing ***AU Handout***

Allessandra McGinnis

Generative Design + Optimization of Lattices + New Materials



The promise of advanced manufacturing



Better products

Performance optimization
through advanced geometry



Custom products

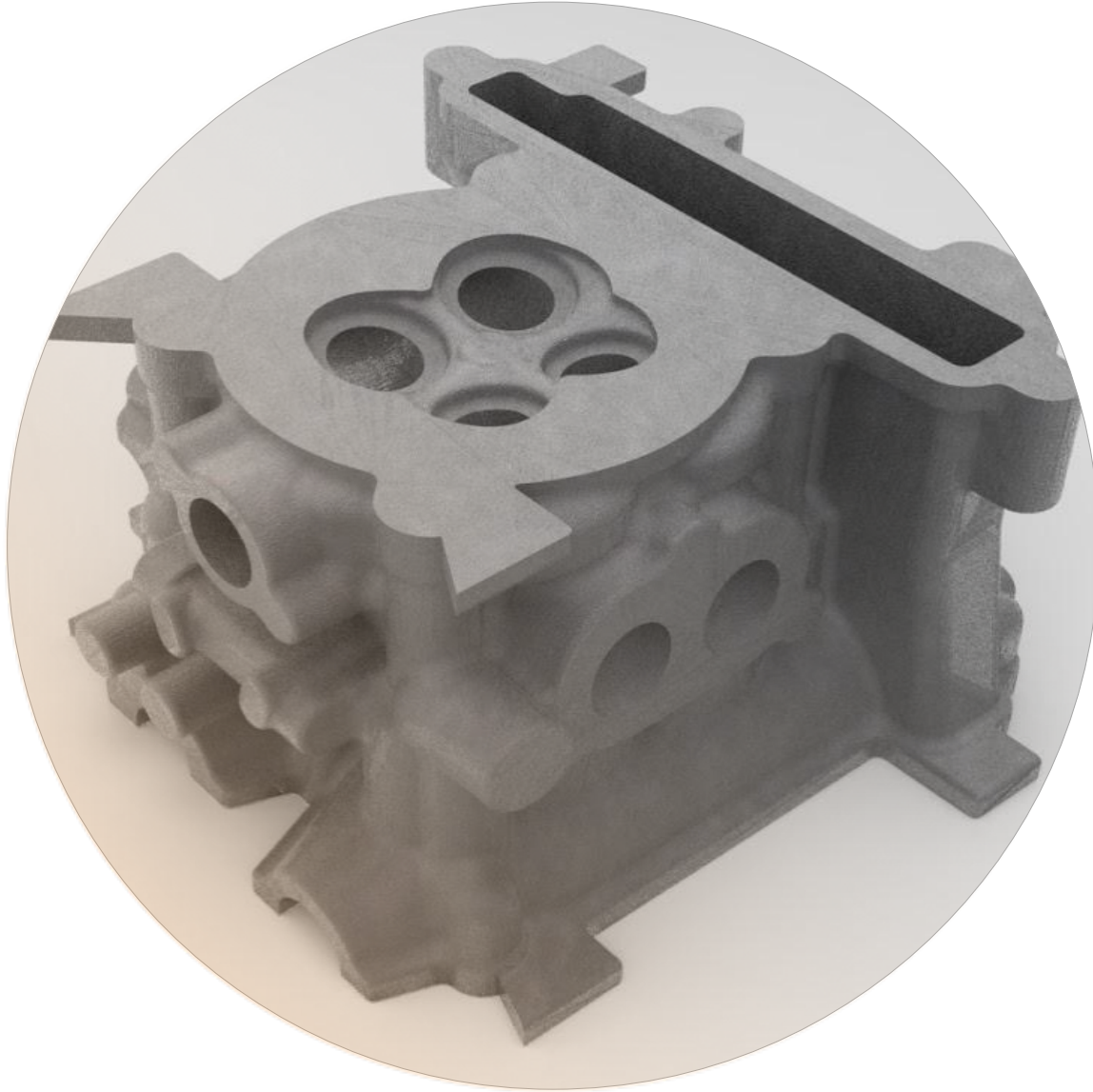
End to end production
pipelines where every
product is one of a kind



Cheaper products

Supply chain optimization
through short-run and
on-demand production

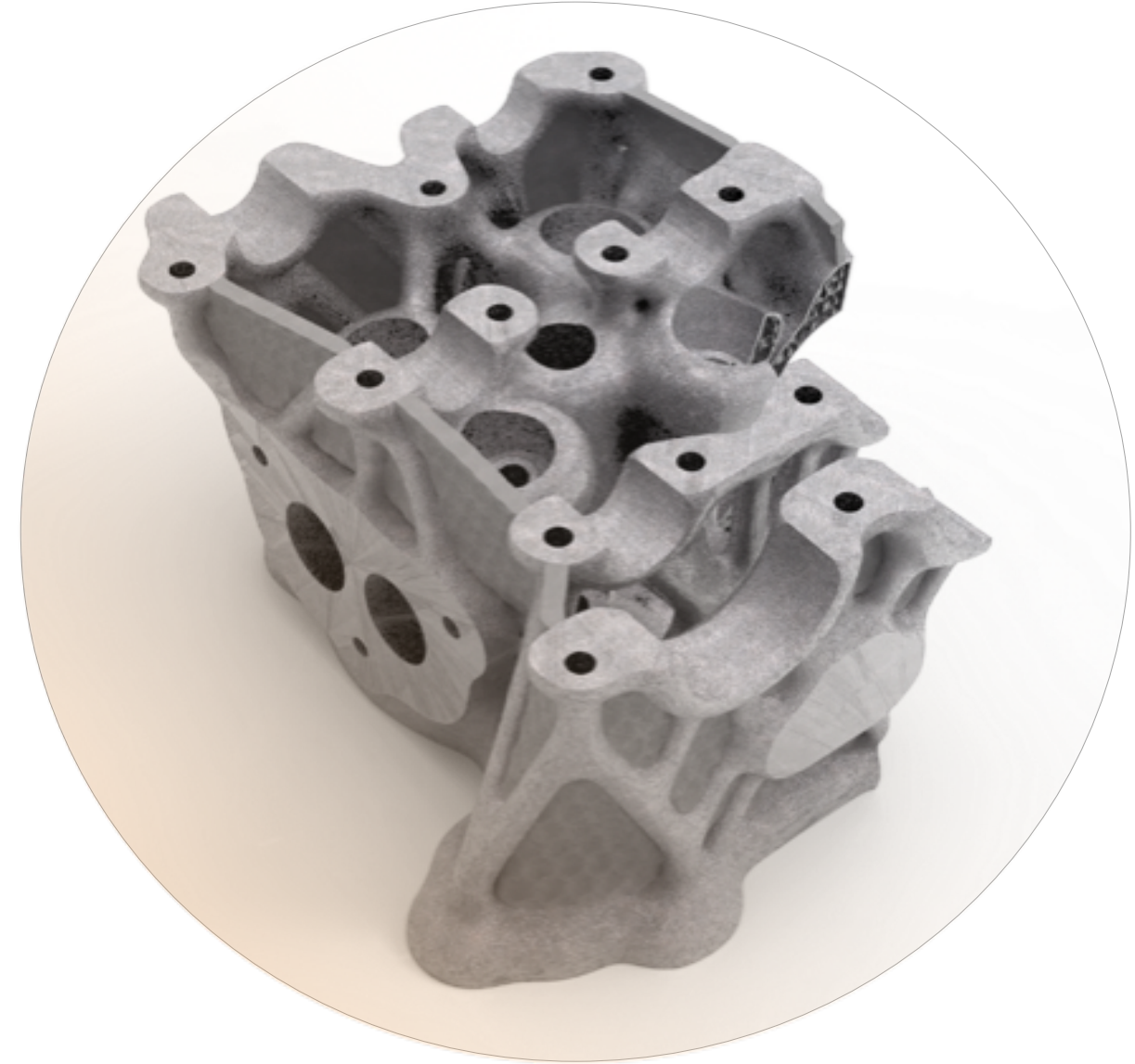
Additive Manufacturing Disrupts Product Design



Before

Weight 5.095 g

Internal cooling surface 823 cm²

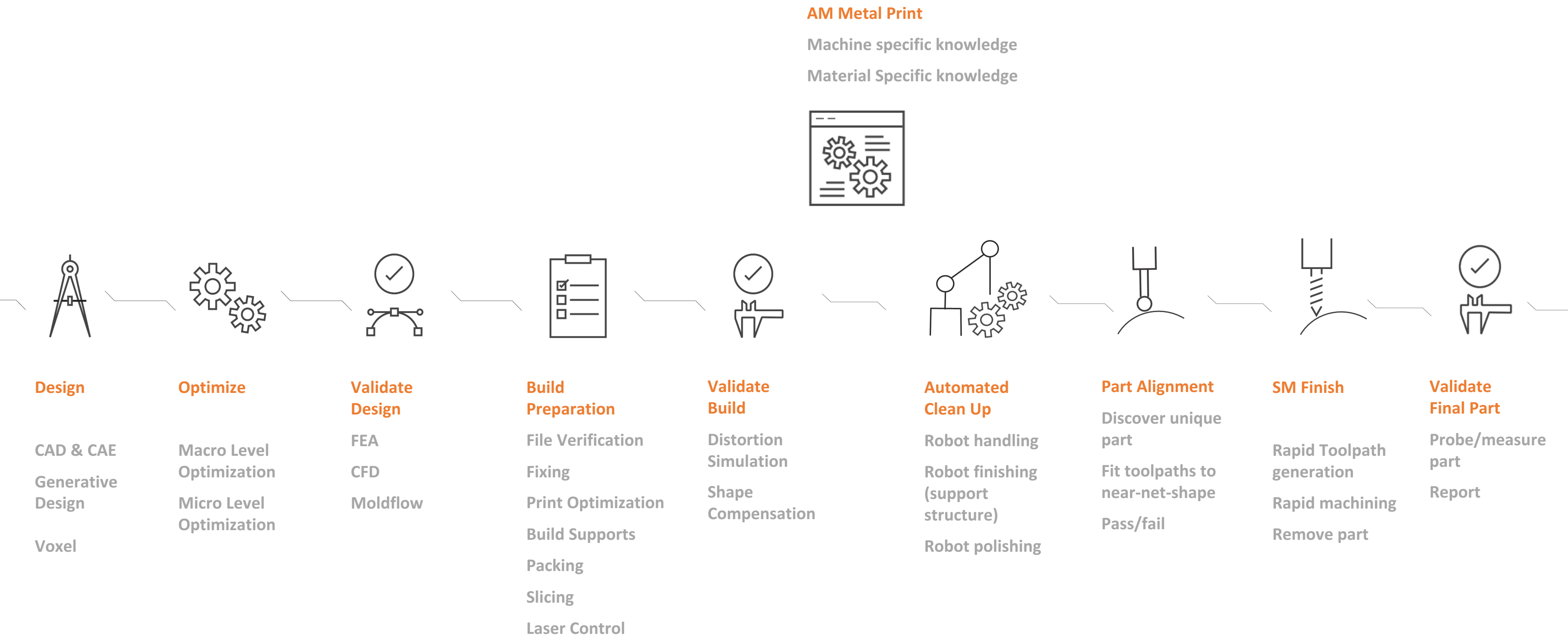


After

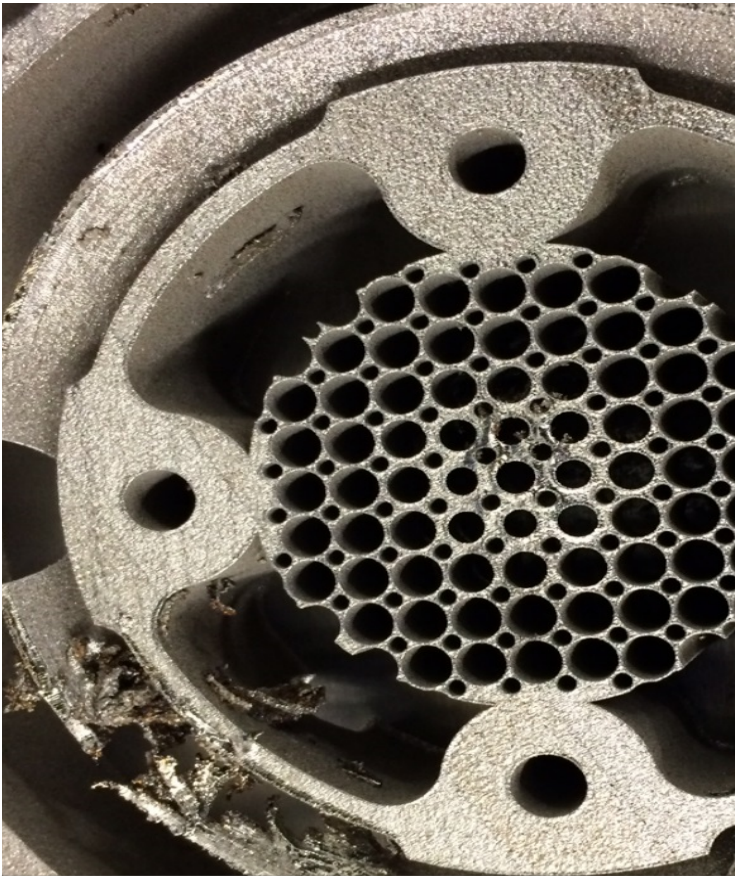
Weight 1.919 g

Internal cooling surface 10.223 cm²

End-to-end Additive Manufacturing Workflow



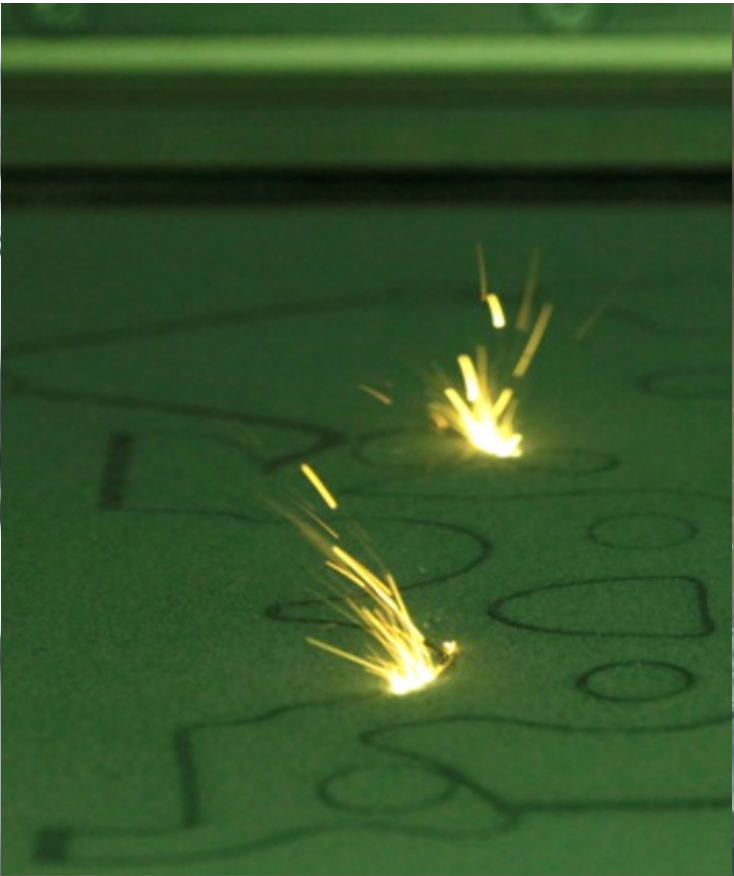
Addressing the Full Scope of Additive Opportunities & Challenges



PART DISTORTION AND
PRINT FAILURES



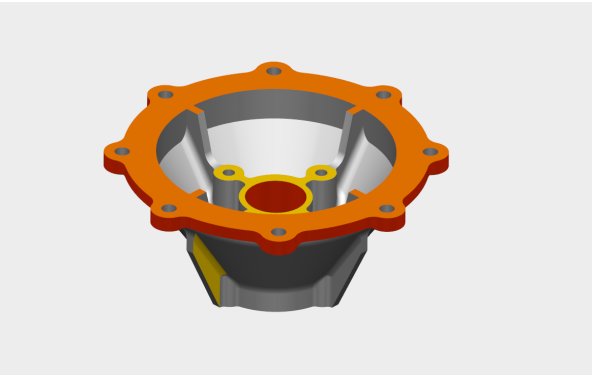
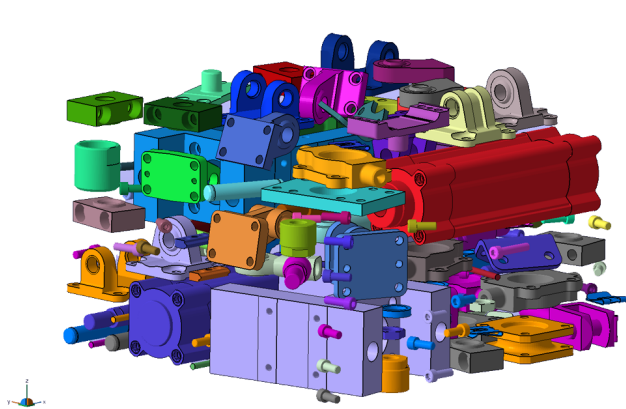
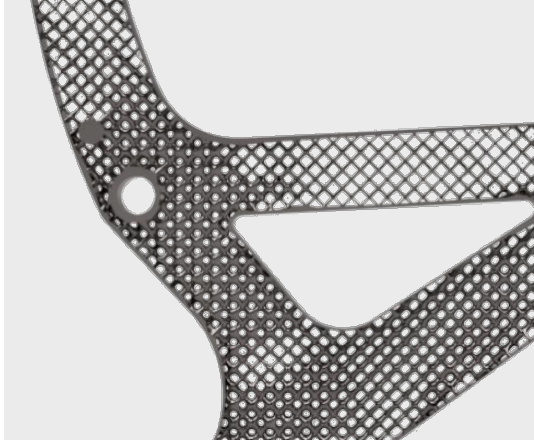
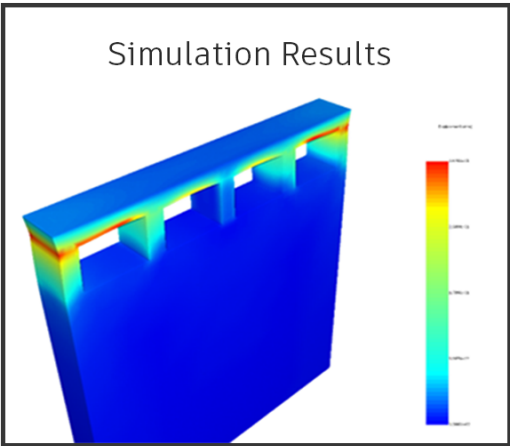
CREATING COMPLEX,
ORGANIC FORMS



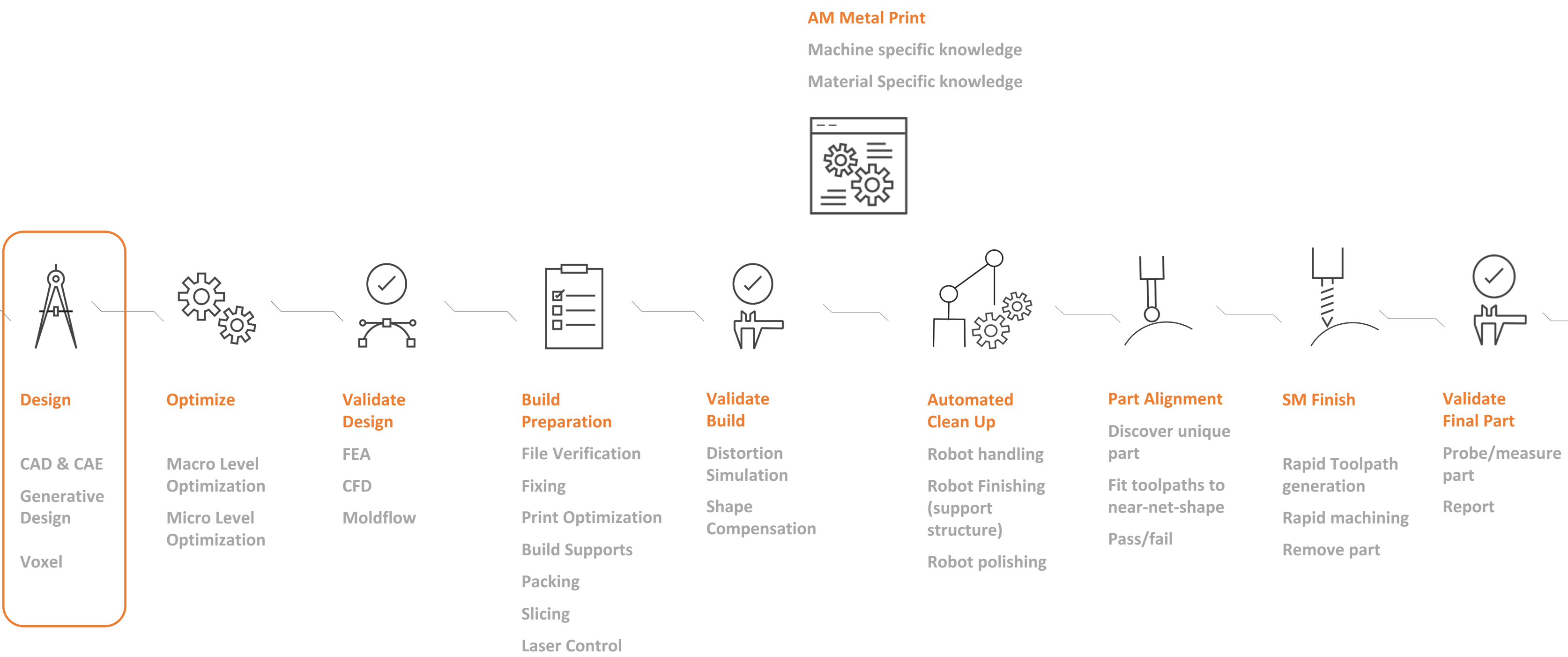
MACHINE UTILIZATION &
THROUGHPUT



PLANNING CNC FINISHING
OPERATIONS



End-to-end Additive Manufacturing Workflow





Autodesk and the Autodesk logo are registered trademarks or trademarks of Autodesk, Inc., and/or its subsidiaries and/or affiliates in the USA and/or other countries. All other brand names, product names, or trademarks belong to their respective holders. Autodesk reserves the right to alter product and services offerings, and specifications and pricing at any time without notice, and is not responsible for typographical or graphical errors that may appear in this document.

© 2017 Autodesk. All rights reserved.