

FAB124635

Implementing Fabrication ESTmep—Best Practices

Lyle Janda
Applied Software

Learning Objectives

- Discover the basic concepts and necessary steps of implementing Fabrication ESTmep.
- Learn how to navigate through the Product Information Editor.
- Discover how Fabrication ESTmep links to pricing list.
- Learn how to import pricing updates.

Description

Take a look under the hood and see how Fabrication ESTmep software can save you time and money by using one common database throughout the Autodesk Fabrication portfolio. Learn best practices from industry experts on how to implement Fabrication ESTmep. In this class, we'll go through a recommended implementation strategy, along with best practices for a smooth implementation. We'll examine the Product Information Editor, ID Codes, and how pricing information is linked to items within Fabrication ESTmep. We'll look at the Harrison Pricing Service, and show you how to update an existing price list using a CSV file.

Speaker(s)

Lyle Janda is a technical advisor at Applied Software for the Autodesk Fabrication products. He has extensive experiencing in installing, training and supporting Fabrication CADmep, ESTmep, CAMduct, Tracker and RemoteEntry. Lyle previously worked as a designer and drafter for an MEP contractor. He has contributed significantly towards the creation of the Applied Configuration pack for the US market and our courseware and training materials creation efforts. Lyle is also involved with Applied Software go-to-market strategy for a best known practices knowledgebase for the Autodesk Fabrication Solutions.

Discover the basic concepts and necessary steps of implementing Fabrication ESTmep.

Where to Start?

If you are new to the Fabrication products, you may ask yourself, “Which product do I start with”? We’ll discuss the best approach to question based on your company needs and company pain points.

Implementing Fabrication ESTmep

There are many challenges when setting up ESTmep and it may seem overwhelming at times. Let’s look at what is needed for ESTmep to work and how we can streamline the process.

Sheet Metal

- Bought Out vs. Fabricated
- Where does Material Cost come from?
- Where does Fabrication Cost come from?
- Where does Install Cost come from?
- How does this link to the items?

Sheet Metal Costing Data

- SMACNA
- Internal
- Supplier

Plumbing and Piping

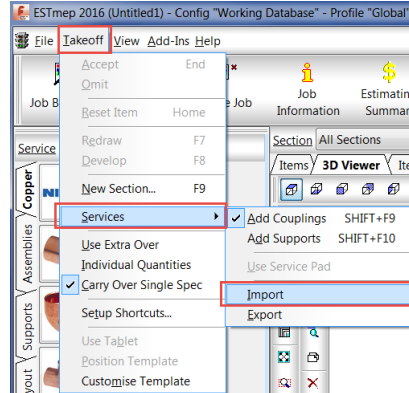
- Where does Material Cost come from?
- Where does Fabrication Cost come from?
- Where does Install Cost come from?
- How does this link to the items?

Plumbing and Piping Costing Data

- CINX (Harrison)
- PHCC
- MCAA
- Supplier

Navigating Through Fabrication ESTmep

Importing Services (.IEZ)



Profiles

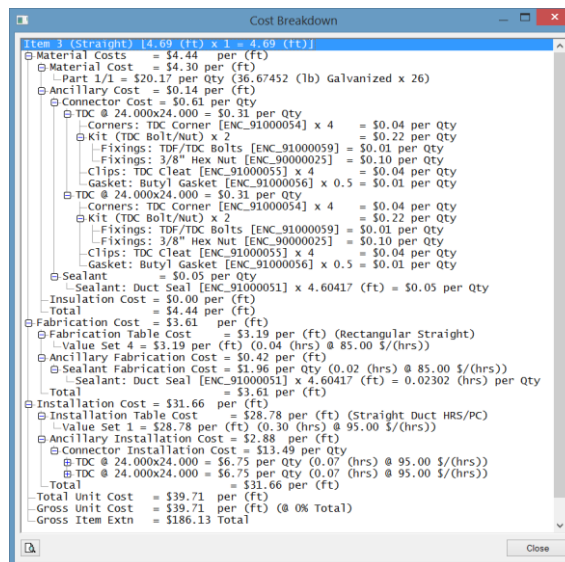
- Profiles can be used to create individual systems configuration settings that can be applied to separate jobs or projects. Creating a new profile lets you create separate service, sections, and items relating to the specification of the job or project.

Item Takeoff

- Customize header layout on Item Tab

Item ...	Qty/Len...	Name	Size	Material	Insulat...	Insulation Ma...	Material Cost	Fab Cost	Install Cost	Total Cost	Fab Time	Install Time	Cost Type
1	56 1/4"	Straight	24" x 24"	Galvanized x 26	Off		\$20.83	\$16.91	\$148.39	\$186.13	0:11:56	1:33:43	Normal

- Cost Breakdown



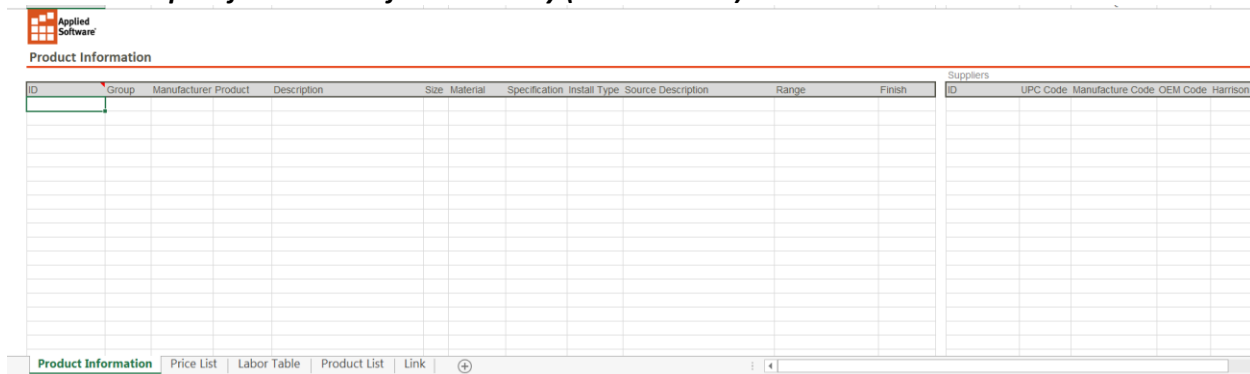
- Item Properties
 - ID Code
 - Costing Tab
 - Pricing Hyper links

Learn how to navigate through the Product Information Editor

What's an ITM?

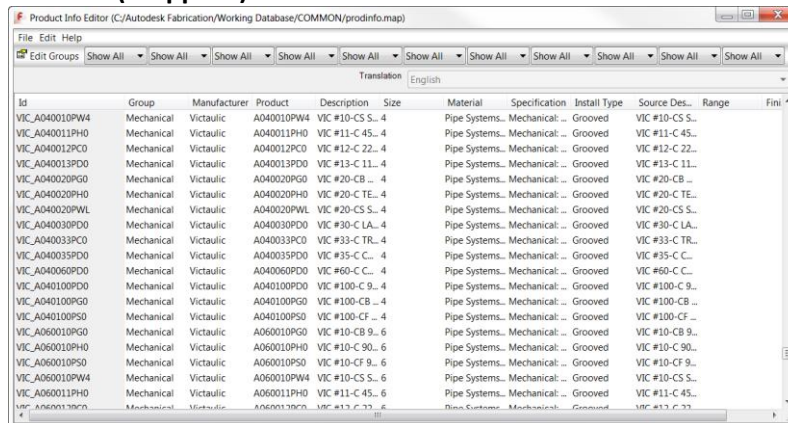
- Product Information
- Material
- Connectors
- Cost Codes
- Ancillaries

Example of Excel Sheet for Data Entry (Table Builder)



The screenshot shows an Excel spreadsheet titled "Product Information Editor (Mapprod)". The spreadsheet is divided into two main sections: "Product Information" on the left and "Suppliers" on the right. The "Product Information" section has columns for ID, Group, Manufacturer, Product, Description, Size, Material, Specification, Install Type, Source Description, Range, and Finish. The "Suppliers" section has columns for ID, UPC Code, Manufacture Code, OEM Code, and Harrison. The spreadsheet is currently displaying the "Product Information" tab.

Product Information Editor (Mapprod)



The screenshot shows the "Product Information Editor (Mapprod)" application window. The window title is "Product Info Editor (C:/Autodesk Fabrication/Working Database/COMMON/prodinfo.map)". The application has a menu bar with "File", "Edit", and "Help". Below the menu bar is a toolbar with "Edit Groups", "Show All", and "Show All" buttons. The main data table has columns for Id, Group, Manufacturer, Product, Description, Size, Material, Specification, Install Type, Source Des., Range, and Fini. The table contains 20 rows of data, each representing a different product configuration.

Show Information

- The Show Information Tab is used to store all of the product information and ADSK ID codes. This information is most commonly used when creating reports. When downloading content, this information is automatically inserted inside the Product Information Editor but can be manually added as well.
 - Use the drop sown menus to create filters.
 - Use the Edit tab to manipulate the data
 - The Green New button located at the bottom is used to paste information from excel.

Product Info Editor (C:\Autodesk Fabrication\Working Database\COMMON\prodinfo.map)

File Edit Help

Translation English

Id	4) UPC Code	1) Manufact.	2) OEM Code	3) Harrison
ADSK_30085082	054211184110	163-4251-01..	4251-010-Sc..	317550340
ADSK_30084203	054211184134	163-4251-012	4251-012	317550342
ADSK_30085083	054211184134	163-4251-01..	4251-012-Sc..	317550342
ADSK_30084204	054211184158	163-4251-015	4251-015	317550344
ADSK_30085084	054211184158	163-4251-01..	4251-015-Sc..	317550344
ADSK_30084205	054211184172	163-4251-020	4251-020	317550346
ADSK_30085085	054211184172	163-4251-02..	4251-020-Sc..	317550346
ADSK_30084206	054211184196	163-4251-025	4251-025	317550348
ADSK_30085086	054211184196	163-4251-02..	4251-025-Sc..	317550348
ADSK_30084211	054211185070	163-4254-030	4254-030	317550350
ADSK_30085091	054211185070	163-4254-03..	4254-030-Sc..	317550350
ADSK_30084191	054211184653	163-4253-007	4253-007	317550360
ADSK_30085071	054211184653	163-4253-00..	4253-007-Sc..	317550360
ADSK_30084192	054211184677	163-4253-010	4253-010	317550362
ADSK_30085072	054211184677	163-4253-01..	4253-010-Sc..	317550362
ADSK_30084193	054211184691	163-4253-012	4253-012	317550364
ADSK_30085073	054211184691	163-4253-01..	4253-012-Sc..	317550364
ADSK_30084194	054211184714	163-4253-015	4253-015	317550366
ADSK_30085074	054211184714	163-4253-01..	4253-015-Sc..	317550366
ADSK_30084195	054211184738	163-4253-020	4253-020	317550368
ADSK_30085075	054211184738	163-4253-02..	4253-020-Sc..	317550368
ADSK_30084196	054211184752	163-4253-025	4253-025	317550370

Show Suppliers

- The show Suppliers tab is used to add the supplier cod and link it to the ADSK ID code. By default the UPC Code, Manufacture ID, OEM Code and Harrison Code are included. New Suppliers can be added or deleted.
 - The Green New Button is used to import excel information.
 - If subscribed to CINX (Harrison), they will send you a pricing updated that will use these same codes.
 - This information can also be used in reports.

Discover how Fabrication ESTmep links to pricing List

Updating Pricing List

There are multiple ways to update a price list in the Fabrication ESTmep database. You will learn how to download a price list update from CINX and import the CSV file with the program.

Database Costing Overview

- The costing portion of the Database Is used to setup and maintain the Price List, Fabrication Times, Installation Times, Labor Rates and other costing information.

Starting Fittings Takeoff Costing

Supplier Group: Harrison

Carriage: 0.0 (%)

Material Overheads: 0.0 (%)

Price List: Harrison List Prices

Generic Name:

Original Pricing: None

Id	Cost	Discount	Units	Date	Status	Harrison	OEM	Description	Size	Material	Install.
ADSK_30001296	1.86	Cerro	per (ft)	None	Active	010C 8767A	Cerro	Type I Hard Copper	1/4"	Copper	Tube
ADSK_30001280	1.86	Cerro	per (ft)	None	Active	010C 8767A	Cerro	Type I Hard Copper (Grv)	1/4"	Copper	Tube
ADSK_30000743	2.12	COPPER TUBING	per (ft)	11/26/2013	Active	010MU8887A	Generic	Pipe-B88-CU-LI(PE)	1/4"	Copper	Plain E..
ADSK_30000777	2.12	COPPER TUBING	per (ft)	11/26/2013	Active	010MU8887A	Generic	Pipe-B88-CU-LI(GR)	1/4"	Copper	Groov..
ADSK_30001297	2.84	Cerro	per (ft)	None	Active	010C 8771A	Cerro	Type I Hard Copper	3/8"	Copper	Tube
ADSK_30001281	2.84	Cerro	per (ft)	None	Active	010C 8771A	Cerro	Type I Hard Copper (Grv)	3/8"	Copper	Tube
ADSK_30000744	3.33	COPPER TUBING	per (ft)	11/26/2013	Active	010MU8891A	Generic	Pipe-B88-CU-LI(PE)	3/8"	Copper	Plain E..
ADSK_30000778	3.33	COPPER TUBING	per (ft)	11/26/2013	Active	010MU8891A	Generic	Pipe-B88-CU-LI(GR)	3/8"	Copper	Groov..
ADSK_30001298	3.24	Cerro	per (ft)	None	Active	010C 8775A	Cerro	Type I Hard Copper	1/2"	Copper	Tube
ADSK_30001282	3.24	Cerro	per (ft)	None	Active	010C 8775A	Cerro	Type I Hard Copper (Grv)	1/2"	Copper	Tube
ADSK_30000745	4.16	COPPER TUBING	per (ft)	11/26/2013	Active	010MU8895A	Generic	Pipe-B88-CU-LI(PE)	1/2"	Copper	Plain E..
ADSK_30000779	4.16	COPPER TUBING	per (ft)	11/26/2013	Active	010MU8895A	Generic	Pipe-B88-CU-LI(GR)	1/2"	Copper	Groov..
ADSK_30001299	4.99	Cerro	per (ft)	None	Active	010C 8779A	Cerro	Type I Hard Copper	3/4"	Copper	Tube
ADSK_30001283	4.99	Cerro	per (ft)	None	Active	010C 8779A	Cerro	Type I Hard Copper (Grv)	3/4"	Copper	Tube
ADSK_30000746	5.73	COPPER TUBING	per (ft)	11/26/2013	Active	010MU8899A	Generic	Pipe-B88-CU-LI(PE)	5/8"	Copper	Plain E..
ADSK_30001300	5.26	Cerro	per (ft)	None	Active	010C 8783A	Cerro	Type I Hard Copper	3/4"	Copper	Tube
ADSK_30001284	5.26	Cerro	per (ft)	None	Active	010C 8783A	Cerro	Type I Hard Copper (Grv)	3/4"	Copper	Tube
ADSK_30000747	6.37	COPPER TUBING	per (ft)	11/26/2013	Active	010MU8903A	Generic	Pipe-B88-CU-LI(PE)	3/4"	Copper	Plain E..
ADSK_30000780	6.37	COPPER TUBING	per (ft)	11/26/2013	Active	010MU8903A	Generic	Pipe-B88-CU-LI(GR)	3/4"	Copper	Groov..
ADSK_30001301	R.O.S	Cerro	per (ft)	None	Active	010C 8787A	Cerro	Type I Hard Copper	1"	Copper	Tube

- Costing Tab>Price List
 - Supplier Group: Name of the supplier wanting to be displayed and categorized in Estimate Summary. Used to group price list together from the same supplier ensuring the summaries/reports isolate the cost of each supplier across multiple price list.
 - Carriage: Additional Nett cost added to the price. Example: Used for a transportation percentage from the Supplier to site if there were charges for delivery.
 - Material Overheads: extra supplier based percentage mark up for inclusion into Gross cost calculations.
 - Price List: Name of the Price list contained within the Supplier group. This is the table name assigned to the M-Rate field of each item.
 - Generic Name: Used for grouping price lists that contain the same product codes but from an alternative supplier.
 - Setup Discounts: Discounts are available for assignment to each code in the price list. You can assign a discount code to each of the product codes in the price list. The calculation can be a percentage decrease/increase or by a factory/multiplier.

Learn how to import pricing updates.

CINX

CINX Addin Tool



- CINX has a new Addin Tool that will help streamline the pricing updates inside of ESTmep.

CINX Website Overview

- CINX is a web-based tool that is used to request and download pricing updates.
- General Navigation
 - Custom Download
 - Search by download
- Export CSV file.

Item Folders Overview

- The Item Folders can be used to add a new price list or change a price list to multiple items. When changing the price list at the Item Folder level, this will be a global change throughout the program. Any new items taken off from a service, will reflect the new price list change.
 - Changing the view to Details, shows the Item Properties information.
 - Once the price list has been changed at the Item Folder Level, you will need to update any items in the job.

File Management

- MAJ Files
 - Automatically links to the current database
- ESJ Files
 - Archive Jobs that saves a snapshot of the current database into the ESJ file.
- Batch Jobs Together
 - Combining multiple MAJ files together.
- Job Browser