

MFG468559

MFG468559 Sharing Fusion 360 files through to Autodesk Vault

Robert Savage
IMAGINiT Technologies

Learning Objectives

- Review Desktop Connector and the Project file
- Adding the Files to the Vault
- Managing the files in the Vault
- Versions and Revisions of the files

Description

Last year we did a class (How to Use Fusion 360 and Inventor for Effective Designs) where we linked Fusion 360 files with Autodesk Inventor using Desktop Connector. The most requested addition to that was to link those files into the Vault so this year we are going to go through some of the different configurations for how we can load and manage these fusion files in Autodesk Vault. Some of the things we will look at is how we can create the connection and add the files, managing the files, and discuss version and revisions of the files in Vault. **Speaker(s)**

Robert Savage is a Senior Education Specialist at IMAGINiT Technologies. He is a 30-year design veteran who has designed everything from molds and molded parts to robots. At Remotec, a division of Northrop Grumman Corporation, he spent 5 years as a lead designer in the research and development group, as well as CAD and Vault Administrator. He is an Autodesk Certified Instructor and a Certified Inventor Professional. He has used Inventor software since its inception, as well as being well-versed in a variety of other design software. He has 20 years of experience teaching 3D design software, including AutoCAD Electrical, Product Design Suite Ultimate software, Factory Design Suite Ultimate software, Simulation Moldflow software, Fusion 360, Nastran In-CAD and Vault Professional software.
Email: rsavage@rand.com

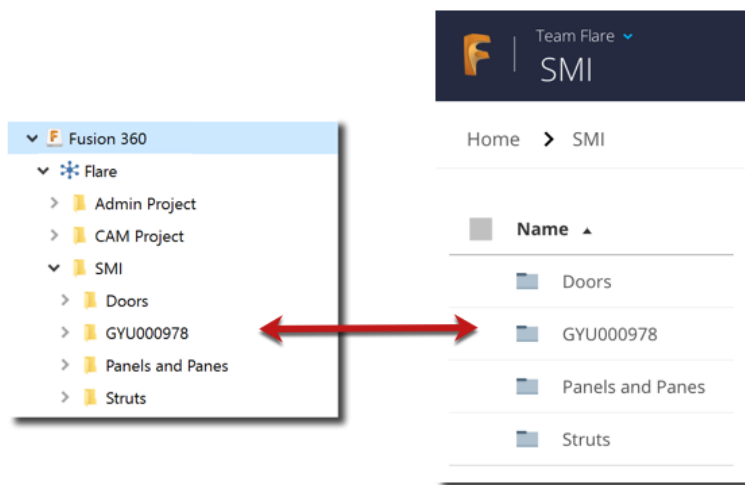
Review Desktop Connector and the Project file

We are going to look at the setup and configuration of Desktop Connector to connect Fusion Team with your desktop.

Desktop Connector

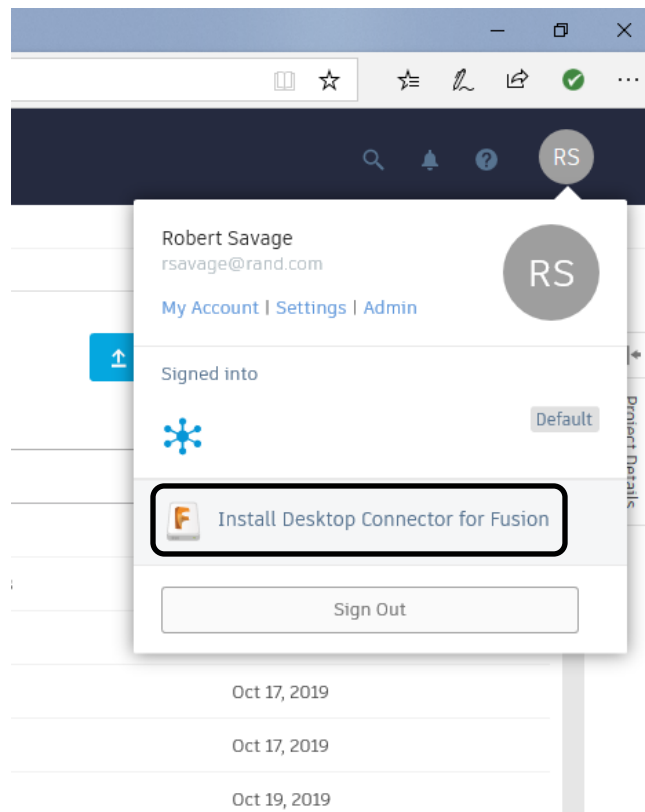
Desktop Connector is a desktop service that integrates an Autodesk data management source (or data source) with your desktop folder and file structure for easy file management.

The files in the data source are replicated in a connected drive. You can manage files in the data source through the connected drive, just as you would any other folder on your machine. Changes made in the connected drive are automatically uploaded to the data source.



Installation


To install desktop connector, you must first go to your Fusion desktop folder select on a project folder then, in your Fusion desktop folder select on your icon and then select install desktop connector. This will create a location on your hard Drive referred to as Connected Drive where it will replicate files added or updated in your Fusion projects and folders.





Using Desktop Connector

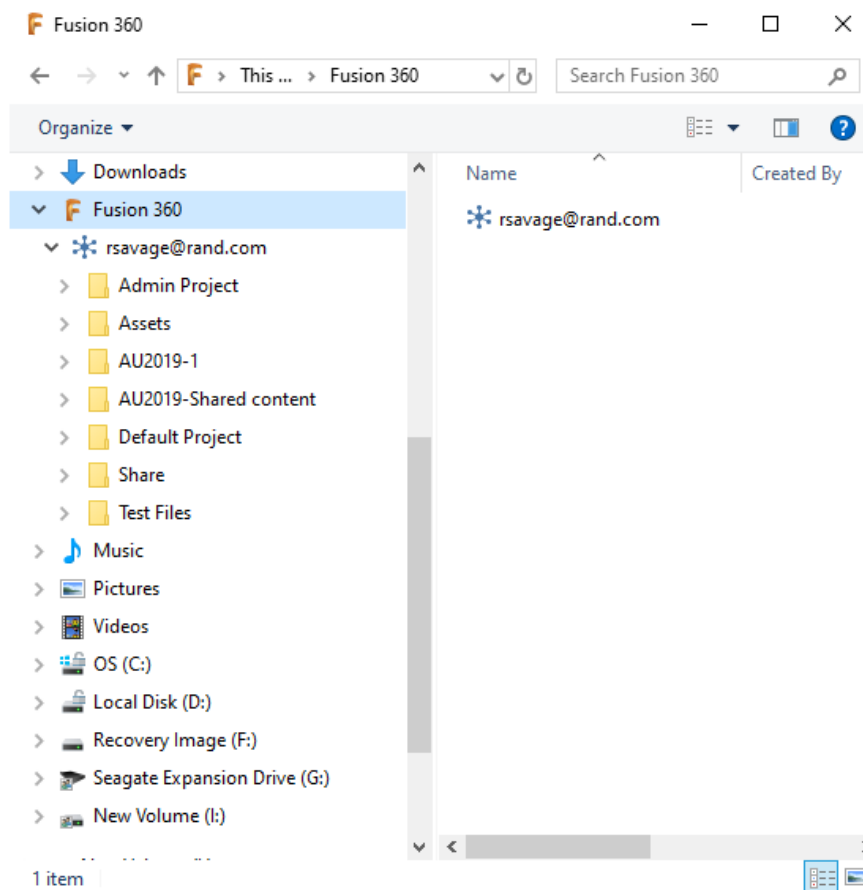
After installing Desktop Connector, you must set up a connected drive.

Set Up a Connected Drive on Windows ®

In the taskbar, right-click on the Desktop Connector icon  and select Sign In. On the Autodesk-Sign In screen, enter your Autodesk credentials and click Sign In.

A connected drive is created for each supported data source associated with your Autodesk credentials. The data source's icon is used to represent the associated


connected drive (such as  for Fusion 360). Any hubs inside the connected drive are marked with an  icon.



Local Fusion Folder.

Using Desktop Connector in Inventor

File saved in Fusion will be copied to your connected drive if a file is modified on your connected drive it will then be copied back up to the Fusion storage location to access the files on your connected drive, in File Explorer, locate the connected drive in the devices and drives section of your PC and expand it to see your hubs. The

connected drive shows a pause icon (e.g., ) if you are in Work Offline mode in Windows®. Expand a hub to see your folders and files. Once you have the files Downloaded onto the connected drive. You can learn using your project file connect your inventor to this location using your workspace location. You will have access to place those files is either an import or a reference into your inventor assemblies if you do them as a reference in the file is updated in Fusion it will then get updated in your inventor once your local drive is updated.

Projects
Shortcuts
File Details

AU2018
Cable and Harness Design
Default
Default
Inventor Designs
Inventor Electrical Project
Inventor Electrical Project

Name	AU2018
Type	Single User
Location	D:\Share\AU 2018\Generative\AU2018.ipj
Workspace	Workspace : .
Workgroup Search Paths	Workgroup : C:\Users\rsaecl\Fusion\rsavage@rand.com
Libraries	(None)
Frequently Used Subfolders	(None)

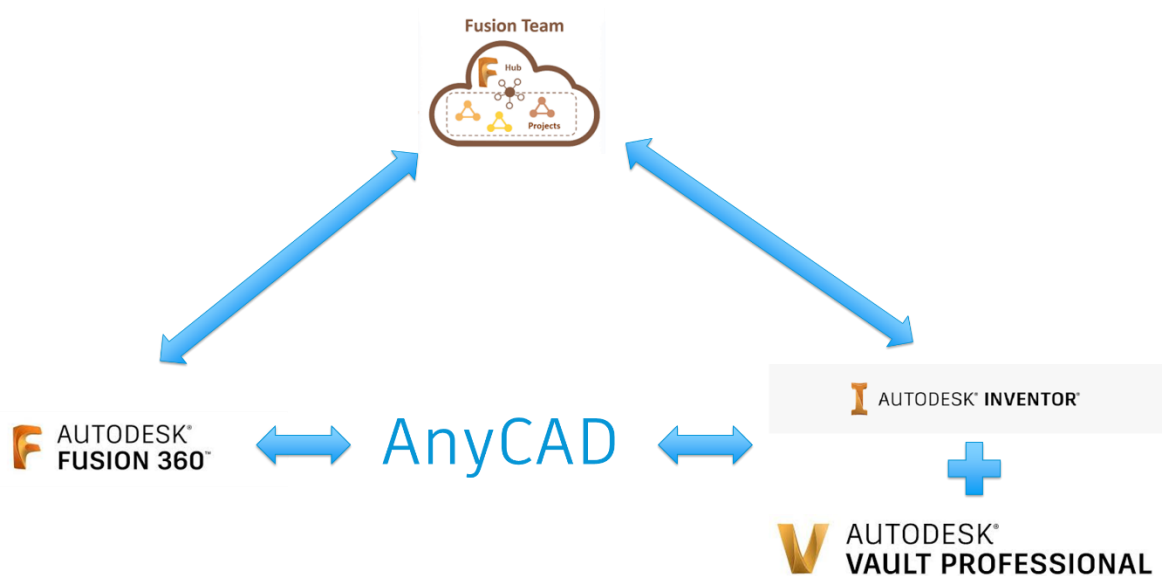
☐ Open shortcuts using Windows Explorer

Adding the Files to the Vault

Desktop Connector is a desktop service that integrates an Autodesk data management source (or data source) with your desktop folder and file structure for easy file management.

The Circle

Fusion Team is the hub that we are writing data to, this is written from both Inventor and Fusion. These are the Bi-Directional so files updated in to teams it will update in Vault. Files are exchanges between design systems using the AnyCAD tool to reference in the files, you can still import files which creates a native file format that will be added to Vault.

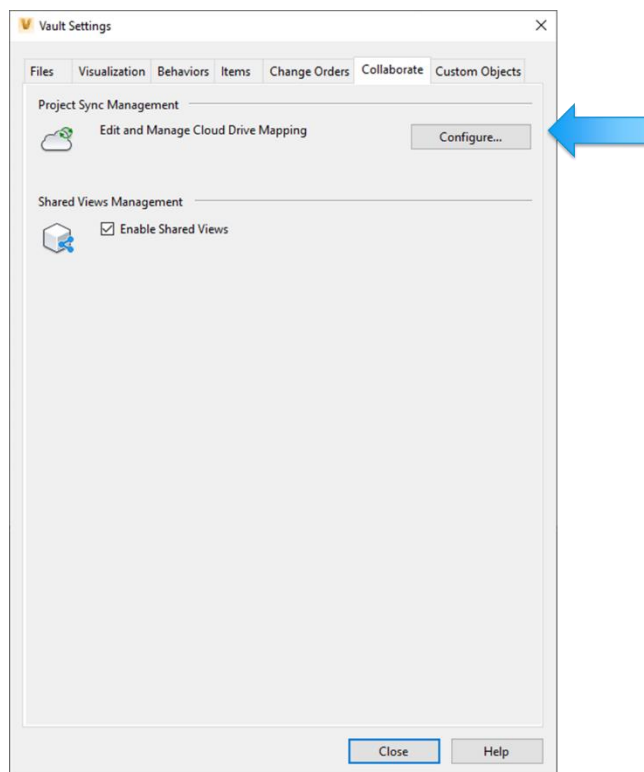


Managing the files in the Vault

The process for setting this up in vault is not a complicated process, I will cover the segments of this below. You will need to have administrator permission to the vault to make these configurations.

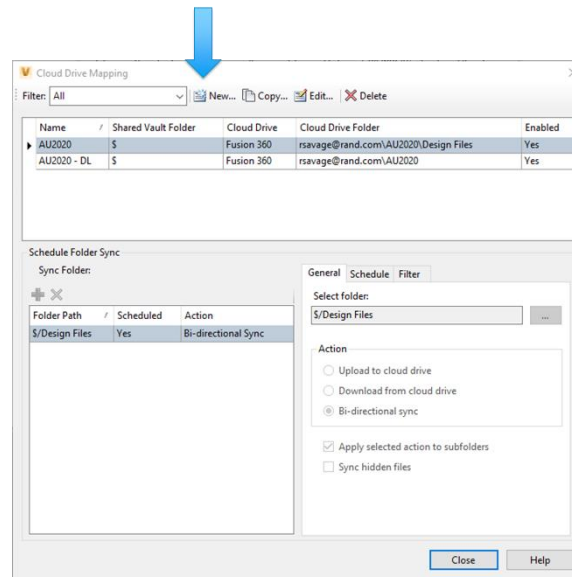
Vault Settings

The first step in the process is to configure Vault Professional you do that in the Collaborate tab of the Vault Settings (Tools, Administration, Vault settings).



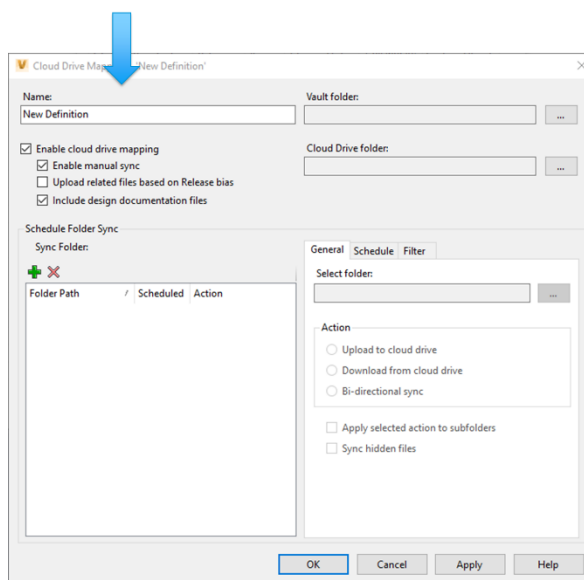
Cloud Drive Mapping

Select the Configure Button, in the Dialog Box select New to configure a new “Cloud Drive Mapping”. Then you will name the configuration and define the Vault Folder and Cloud Drive Folder you wish to Map.



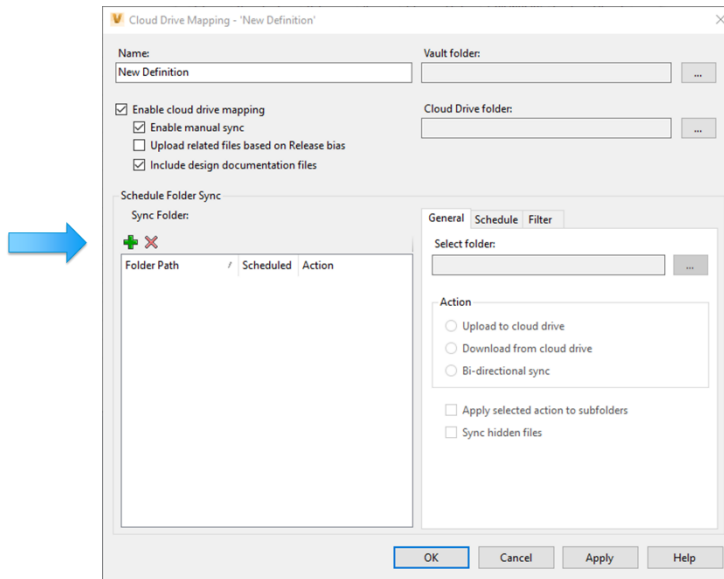
Cloud Drive Mapping

Then you will name the configuration and define the Vault Folder and Cloud Drive Folder you wish to Map.



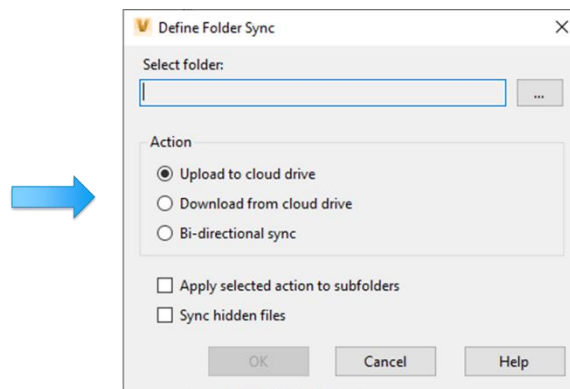
Cloud Drive Mapping

Next you would select the “Plus” icon to add a Sync Configuration



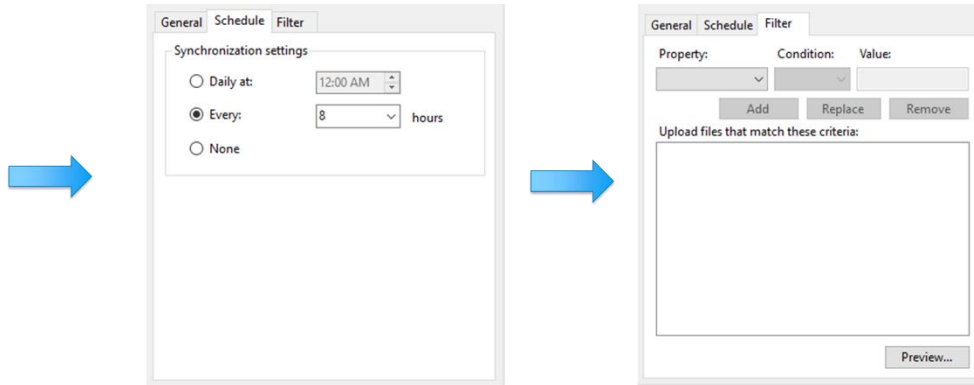
Cloud Drive Mapping

Then you would select the folder you want to pull from, the action or direction you want to sync and the sync settings.



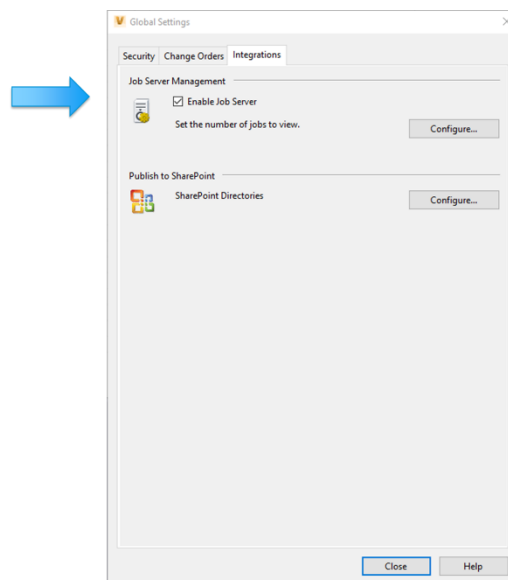
Cloud Drive Mapping

You also have tabs to set the schedule of the sync and to filter to narrow the process.



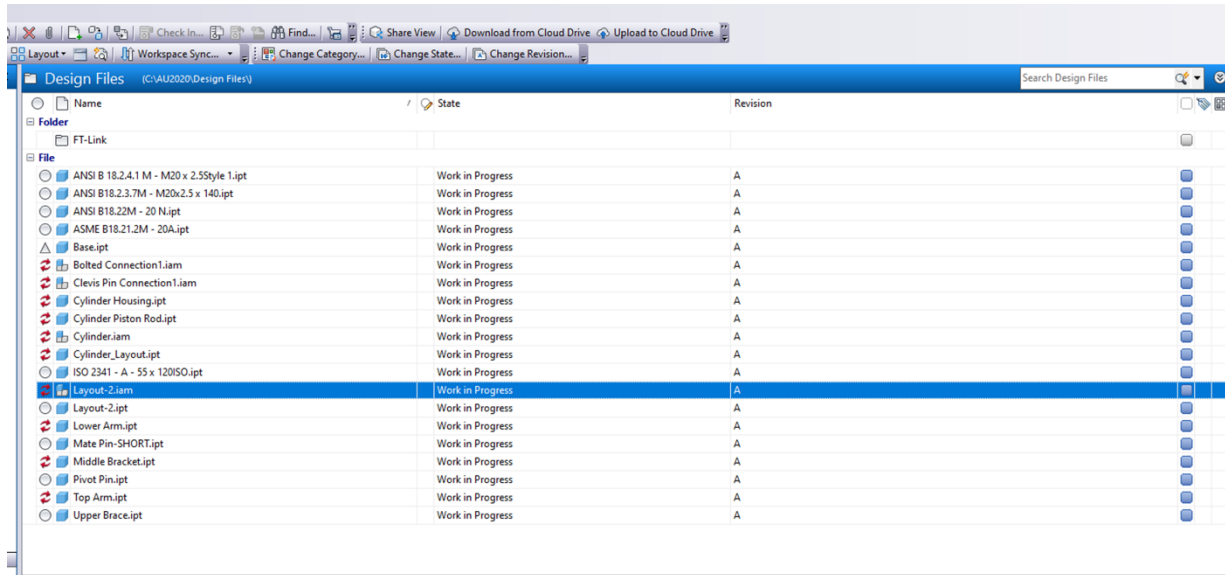
Set Job Server

Next you must enable the Job Server on the system that will process the files. This is done in the Integrations tab of the Global Settings (Tools, Application Options, Global Settings) by selecting the check box.



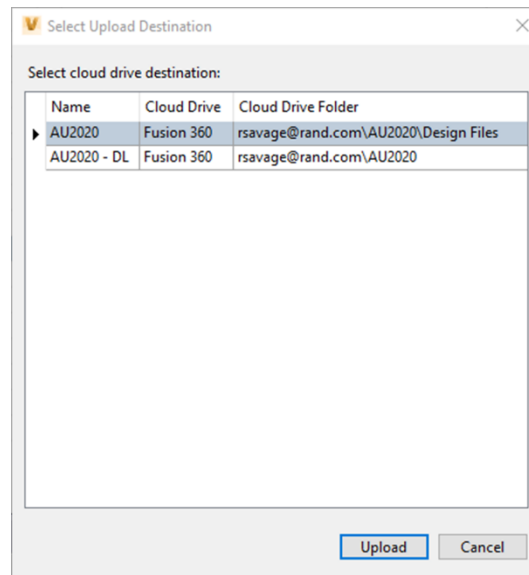
Upload File

Select the file or files to upload and pick “Upload to Cloud Drive”) from the toolbar or in the right click menu.



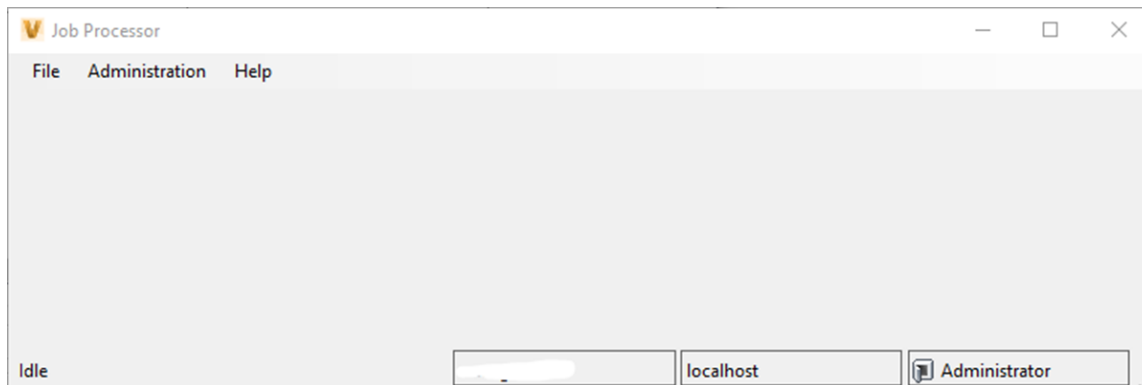
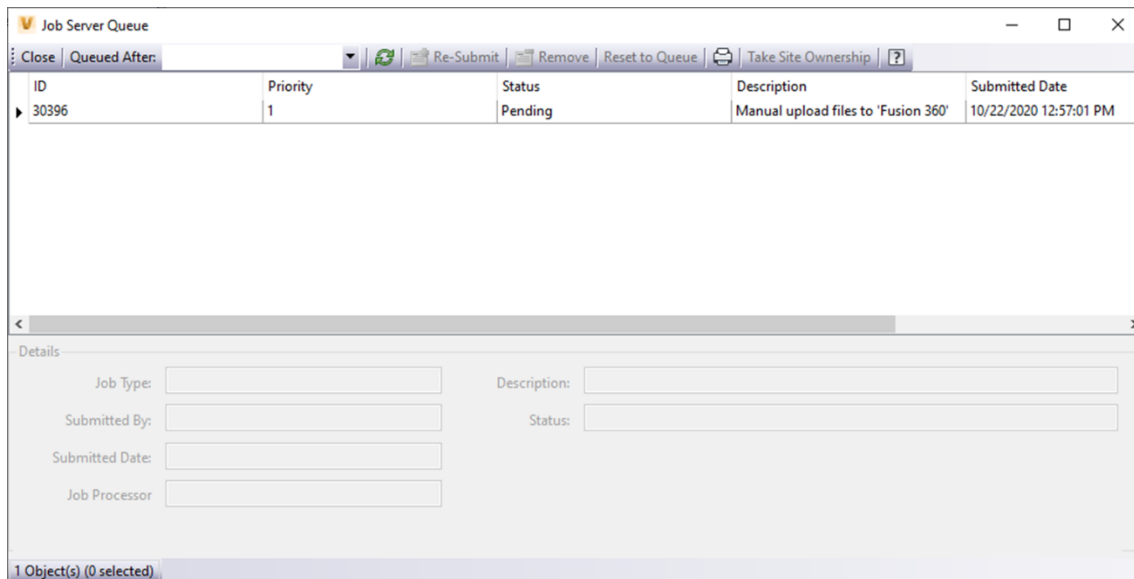
Select Mapping

Select the Cloud Drive Destination from the list you created and select Upload. This will send the information to the Job Processor to be uploaded.



Process Job

Select the Cloud Drive Destination from the list you created and select Upload. This will send the information to the Job Server Queue to be uploaded. If you want this completed immediately you will have to go to the server that is, you Job Processor. Log into the Job Processor to start the process use the file drop and select Pause the Restart this will force the system to run the job.



Versions and Revisions of the files

Versions and Revisions are still managed by the CAD software that owns the file.

Fusion 360 Files

For Fusion Files Fusion 360 manages its own versions that are created on the save of a file.



IPJ	AU2020.ipj	  
	Output 1	V1
	Output 1	V1
	Plate 1	V3
	Plate 1C	V2
	Plate 1b	V1
	Plate 2	V1
	Setup1	V10
	Setup1_Existing	V1
	Setup1_Existing 2	V4
IPJ	Team.ipj	V1

Inventor / Vault Files

For Inventor, Vault will manage the Version / Revision of the file that is uploaded, if a change is made to the file it will version up on the download.

History

Uses



Where Used

Change Order

Preview

Number of versions: 6 (Local = Version #5)

Number of revisions: 2

Thumbnail	File Name	Revision	State (Historical)	Created By	Checked In	Comment
	Layout-2.iam	A	Work in Progress	Administrator	10/22/2020 8:59 ...	Downloaded from Cloud Drive
	Layout-2.iam			Administrator	10/21/2020 3:16 ...	Test