

SD135598-L

Revizto – Reducing RFI by 50% with better virtual construction

Speaker: **Mark Ciszewski, REVIZTO**

Learning Objectives

- Learn how to assign, track and solve clashes more efficiently
- Discover how Revizto fit into an already complex technology environment
- See the benefits of keeping team members in Navisworks, AutoCAD and Revit with our dual screen approach

Class description

Revizto challenges the traditional methodology of project coordination, collaboration and virtual construction. In this session we will walk through the traditional workflow Revizto replaces and the step by step process to easily integrate Revizto onto your next project. If you're looking for an overview of Revizto features this session will not be for you.

A special customer will be coming up to discuss their exact workflow and how they integrated Revizto into their already complex environment. They will discuss challenges they faced and strategies they felt worked best for integrating Revizto onto their project!

There is a fine line between cool new technology and technology that can be harnessed to provide a ROI. This requires not only a short learning curve but comprehension and adoption from the vast range of skill sets involved from Schematic design through construction. We hope you join us to learn how company's around the globe are taking BIM coordination to the next level!

Mark Ciszewski is an extremely passionate professional when it comes to efficient project coordination. He has worked with customers around the Globe and has helped them incorporate Revizto into their already complex workflow. With the nature of Revizto's intuitiveness, there are hundreds of successful Revizto workflows Mark is involved with weekly. With that knowledge, Mark is able to listen to each firm's current workflow and give them a jump started into firm wide adoption of Revizto.



What is Revizto?

Revizto is a real-time, 3D model based issue tracking software for AEC teams with a focus on collaboration and BIM project coordination.

Revizto uses gaming technology and cloud solutions to bring together various building design environments and BIM/CAD workflows into a single, navigable view. The result solves real-world problems in architecture, engineering, construction, and facility management. The Revizto platform is intuitive, easy-to-learn and adaptable to your workflow. With Revizto, BIM implementation is streamlined, allowing teams to speak a common language and share a single window into all project information.

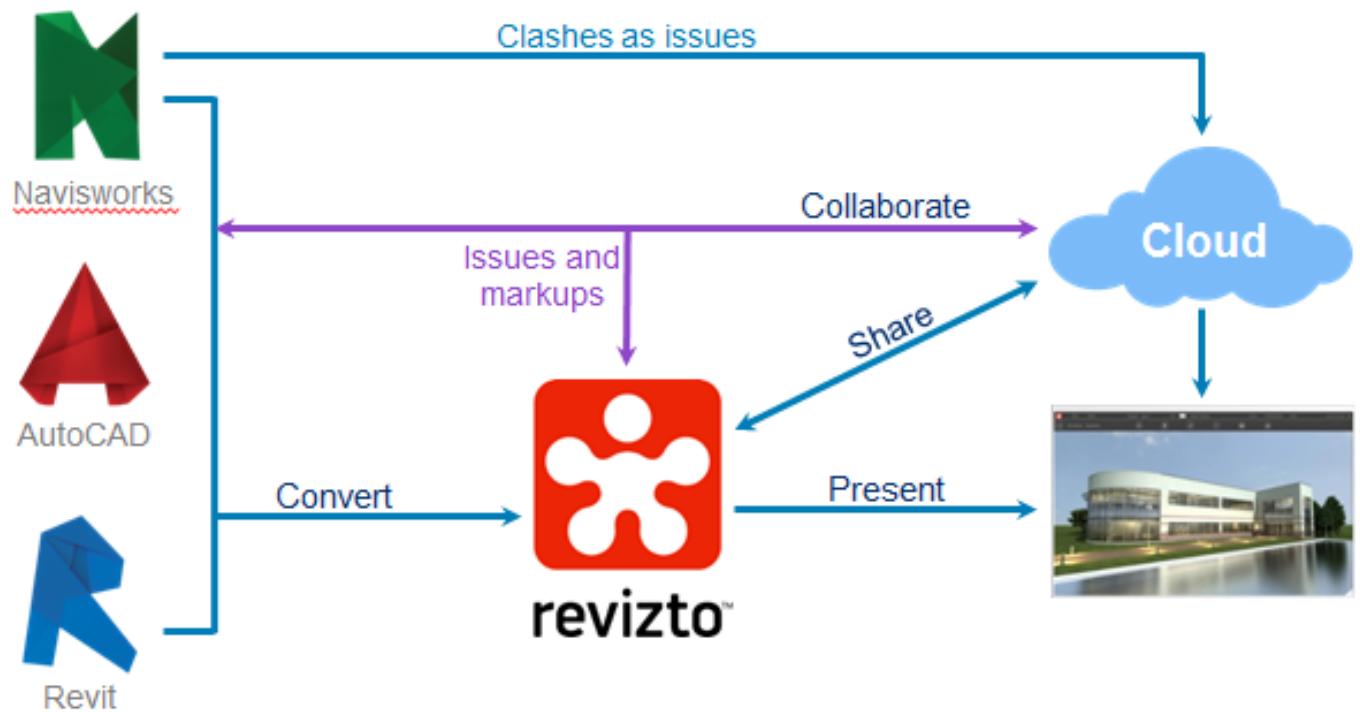
Export in minutes. Bring your BIM project into a navigable 3D environment in minutes. All BIM object data and linked files will be preserved.

Share instantly. Once converted, upload your Revizto model to the Revizto Cloud and instantly share it with anyone on the project team.

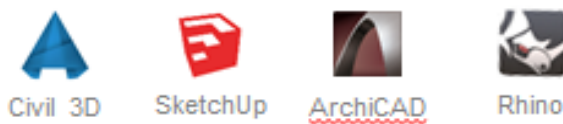
Present and explore in VR. Accurately convey your design as if it has been already built.

Collaborate in real time. Keep track of everything that is going on in your project. Identify, track, and solve problems throughout all phases of the project.

General Revizto workflow



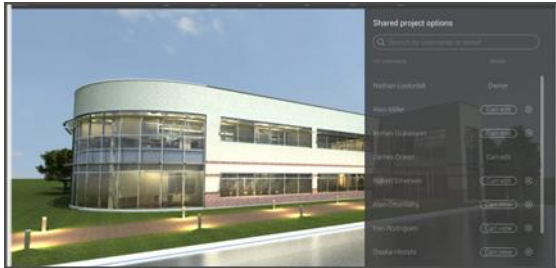
Also works with



Supported file formats



Key features - Export and Share



Cloud Sync and Share

Share Revizto projects with your team through the cloud. Sync the model to push large attachments placed in the Issue Tracker or updated model.



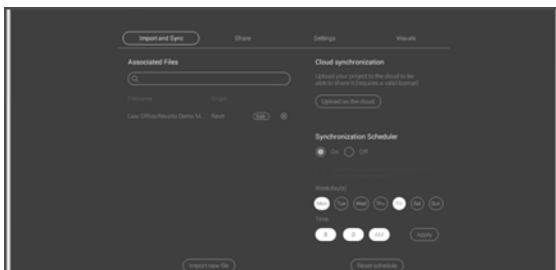
Export 2D Sheets

Export 2D Sheets from Revit, Navisworks, AutoCAD and ArchiCAD to further mark up and collaborate in Revizto. You can also import PDF or DWFX files.



Revision control

View all revisions of your project which have been synced to the Cloud. You can open any revision and revert to it at any time.



Export scheduler

Schedule recurring exports per desired day and time. Revizto will launch your authoring program and export the latest model to your project team.



Export to .exe or for MAC

Share your project as a self-executable file. Any user can open this file on 64-bit Windows PC or MAC without Revizto installation.

Key features - Explore and present on any device



2D Sheets

The home of all 2D documents in Revizto. Use sheet overlay to combine your 2D plan with the 3D model instantly to provide a better understanding of your project.



Objects

Discover detailed information about any object in one double click. Any object or object's category can be made transparent or semi-transparent.



Viewpoints / Section cuts

Save any spot in the scene for navigation and presentation purposes. Each viewpoint can contain a section cut and category visibility/transparency settings.



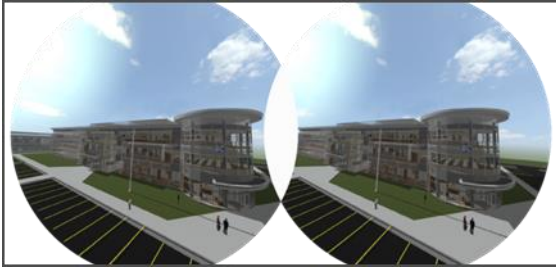
2D map

An intelligent map shows your exact location, elevation, grid intersect and the Revit room names on surrounding you. Within 2D map you can instantly teleport to any level or area of your project in one double click.



Camera Sharing

Providing the WOW factor. Do remote presentations or discuss potential problem areas with "camera share" functionality. It transmits your movements on other remote devices without virtually zero delay at breathtaking speeds.



VR Support

Explore your project in VR. Revizto works natively with Oculus and HTC Vive and instantly creates an immersive, true-to-scale VR experience in seconds allowing users to explore real model data and coordination issues in VR.



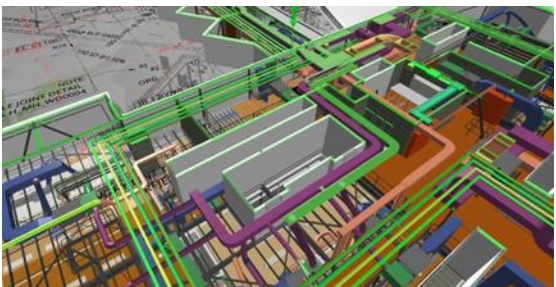
Ruler

Snaps to measure the closest surface, minimum distance between two objects or any other points all based on the geometry of your authoring software.



Sketch Mode

Avoid distracting details and questions around materials while working in the preliminary stages of the project. Introduce your first ideas clearly.



Color Coding

Ability to color code linked models, categories and levels makes it easy to distinguish between teams and roles inside a coordination project.

Key features - Collaborate with your team in real time



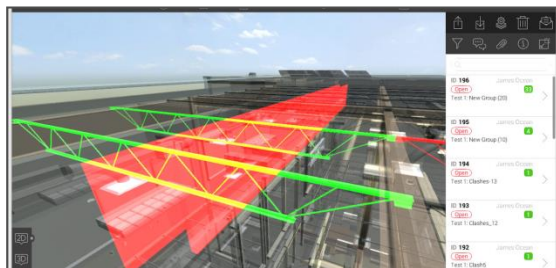
Instant notifications

Assignees and watchers of issues get instant notifications about new comments and updates – in-program and via e-mail. Customize the e-mail notifications settings to see only what you need and to avoid having them all routed to your trash.



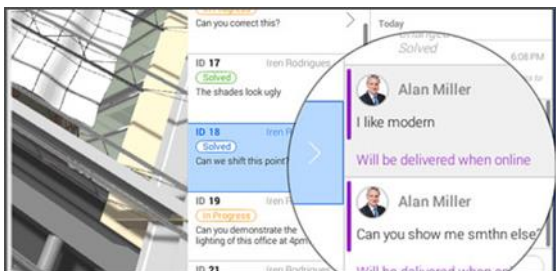
Plugins

Create new issues and markups directly from BIM/CAD program or view existing issues by launching the Issue Tracker. By double-clicking on the issue a new view will be created in your authoring software to show the problem.



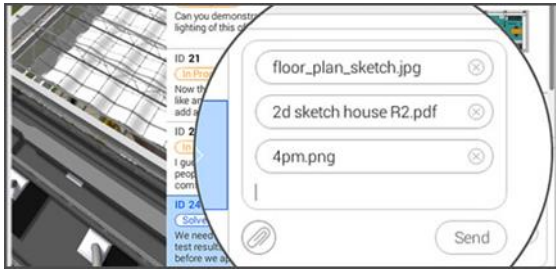
Clashes from Navisworks

Import all clashes from Navisworks into Revit Issue Tracker. Next, assign accountability, deadline and specifics notes to ensure they get resolved in a timely matter. This will also allow users to view in their native modeling software.



Offline usage

The Issue Tracker works perfectly offline. This allows users to bring their live model in the field. The issues created while offline will be synced when you regain your connection to the Internet. Therefore, you can use Revit mobile version on iPad or Android on building site for issue tracking.



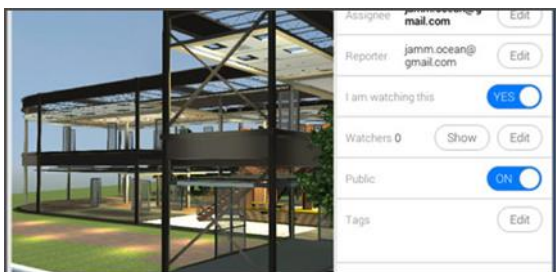
Attachments

Attach images and documents in the issue timeline/chat window. Users can take photos in the field and mark up the photos before attaching to the issue. Likewise, office counter parts can make screenshots of what's actually going on in their model and paste those into the log.



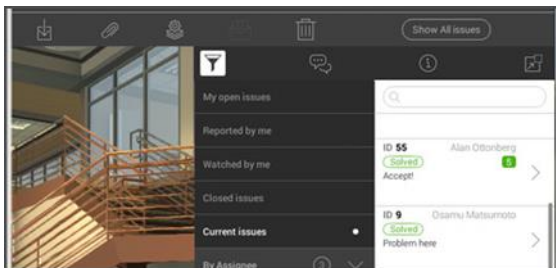
Issue Reports

On the Revizto Workspace, view an interactive graph showing the issue status and dynamics. Set up an automatic issue report to be sent to you in PDF or Excel format or pull a report instantly from your defined parameters within the Issue Tracker.



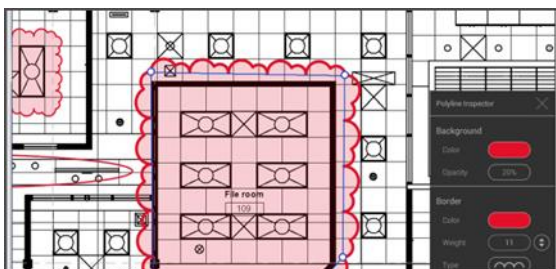
Public and private issue

Make the issue private if you don't want it to be seen by everyone. This gives you an ability to manage the issues with different teams within one project.



Advanced filtering

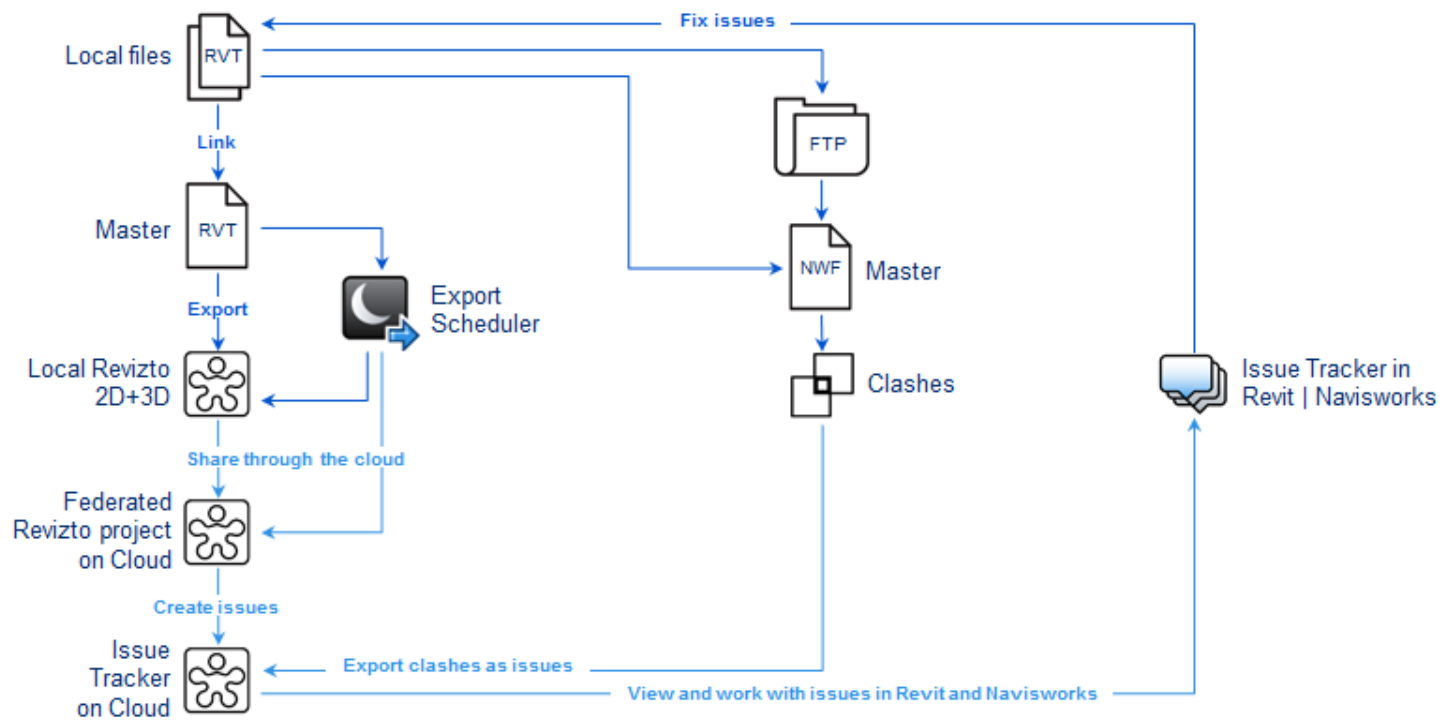
With the filtering system it is easy to find any issue or to view a specific group of issues. This is where users take full advantage of tagging issues.



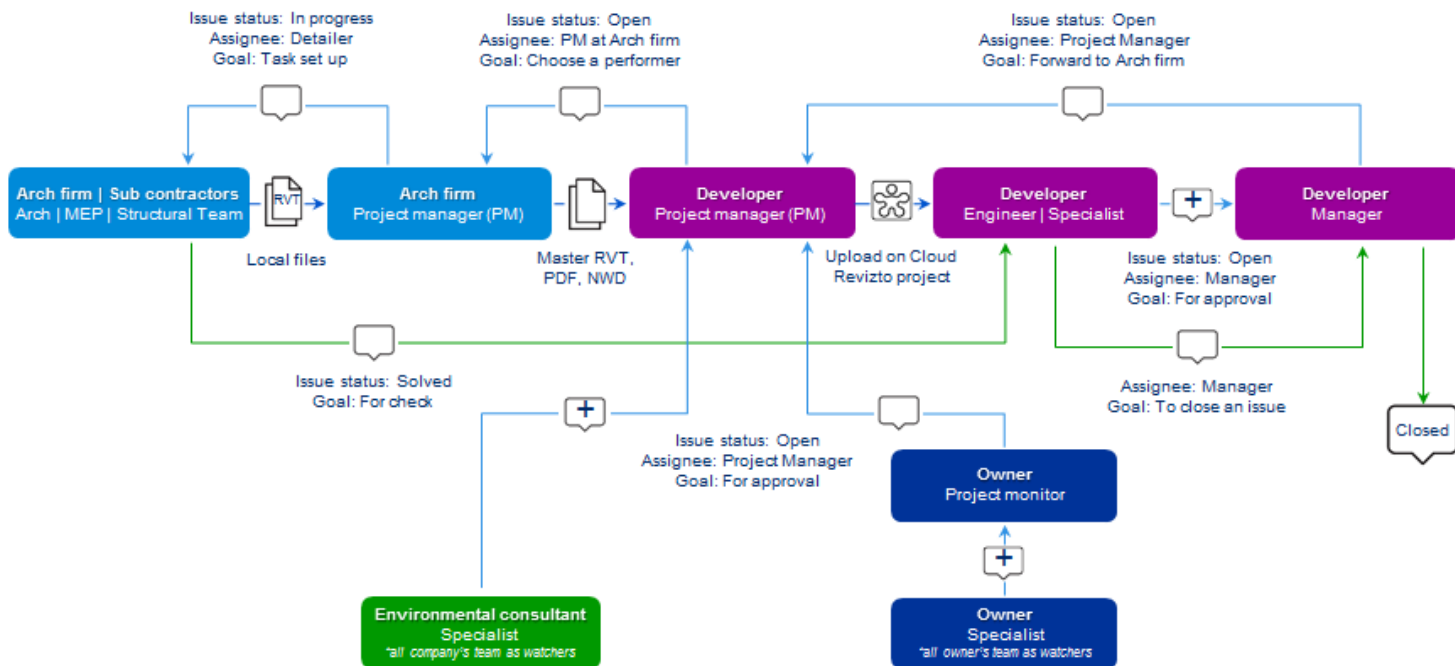
Markup tool

Explain the problem with a simple visual language using the markup tool. Easily create a new screenshot for the current issue and markup it.

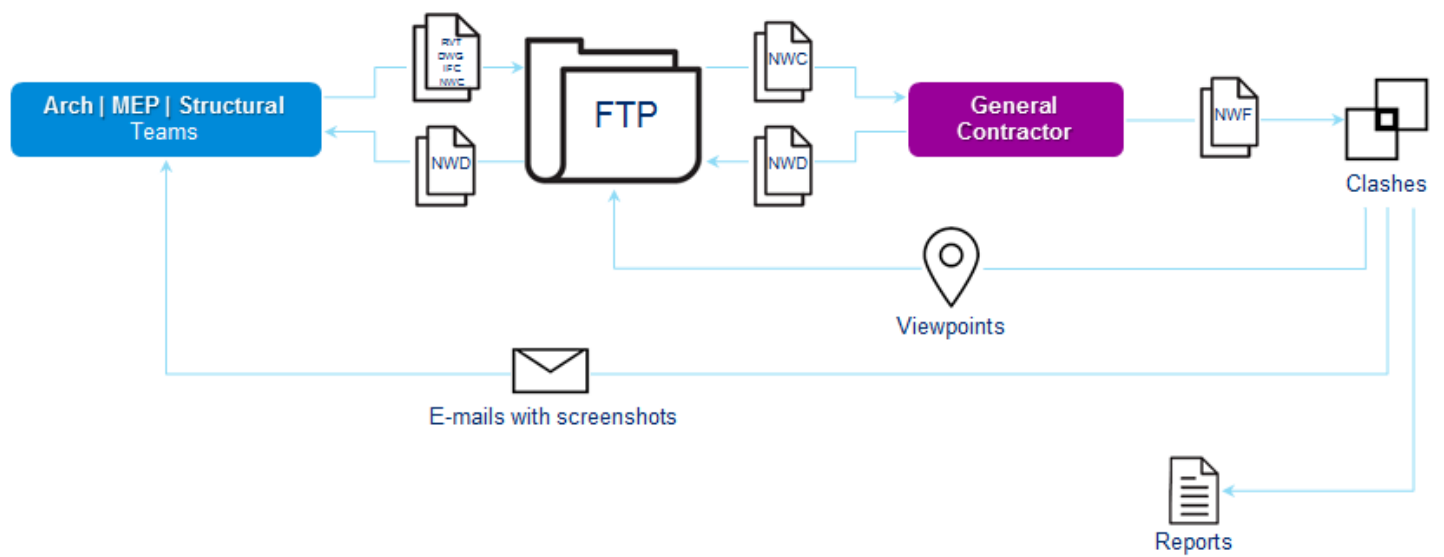
Typical workflow for Design Phase



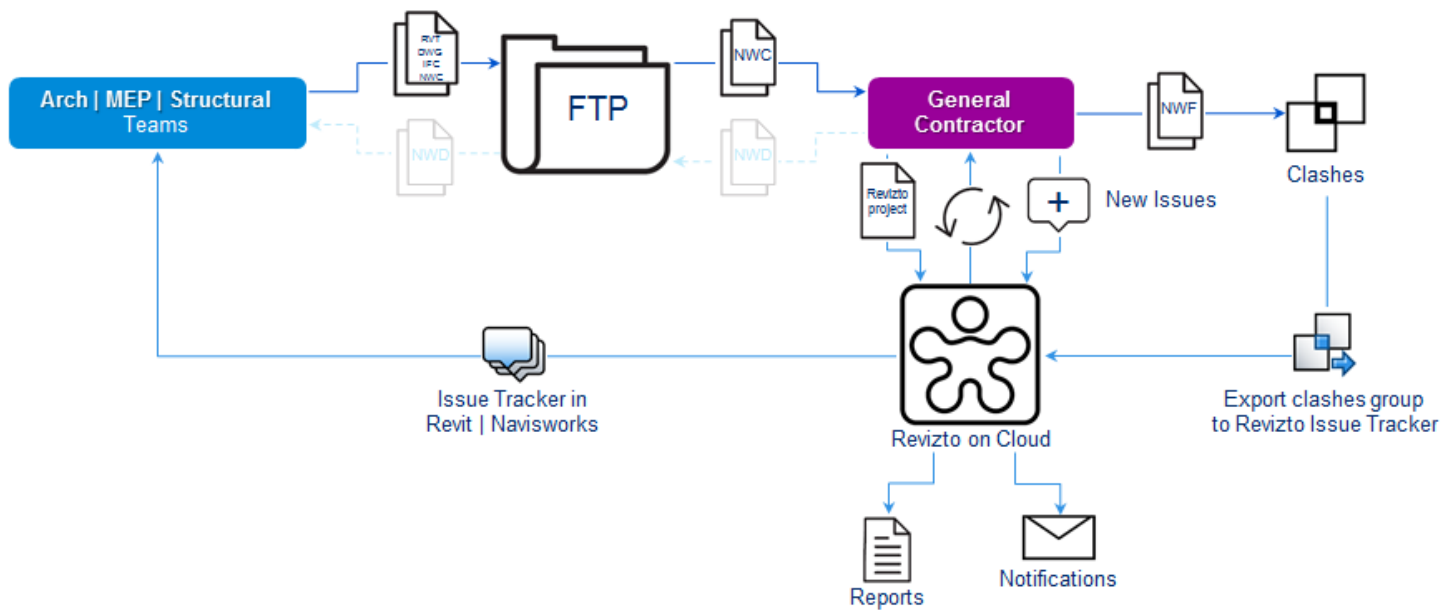
Workflow example for General Contractor



Example of traditional coordination cycle



Revizto-infused coordination cycle



Find out more about Revizto:

| | |
|------------------------|--|
| Revizto website | <u>https://revizto.com</u> |
| User Manual | <u>https://help.revizto.com</u> |
| Video tutorials | <u>https://goo.gl/dMUwPa</u> |

Revizto in social media

Twitter [@revizto](https://twitter.com/revizto)

YouTube www.youtube.com/REVIZTO

LinkedIn Group <https://www.linkedin.com/groups?gid=6629194>

Facebook www.facebook.com/REVIZTO