

Linked Details Amongst Multiple Models in Revit Lab

Brian Mackey

BD Mackey Consulting

@ Brian@BDMackeyConsulting.com

[@TheRevitGeek](https://twitter.com/TheRevitGeek)

[/in/MackeyBrian](https://www.linkedin.com/in/MackeyBrian)

BDMackeyConsulting.com/Blog

Join the conversation #AU2017

 **AUTODESK.**
UNIVERSITY



MACKEY
CONSULTING

Class Summary

- Brief discussion on strategies for details in a campus project
- Review a detail project file
- Link detail file into multiple building files
- Create views for detail in building files
- Create referenced views to the details
- Update the details

Ask questions along the way!

Copied Details / Copy Paste

- Create details in a building file
- Copy / Paste details into each building file
- Update details
- Either Copy / Paste again or edit detail in each building file

- **Pros**

- Easy for users
- Sheet numbers & Detail numbers may vary from building to building

- **Cons**

- Inaccuracy in details
- Sheet numbers & Detail numbers may vary from building to building
- Remembering to paste updates

Buildings Linked to Site File

- Link all buildings into site file
- Details and sheets done from site file

- **Pros**

- Everything in one location
- Sheet numbers & Detail numbers same for each building
- Easy to update details
- Works great for one CD set

- **Cons**

- Large file size
- Lost links cause issues
- Orphaned tags and dimension

Dummy Sheets

- Details created in one building file
- Dummy views created in each building file
- Dummy sheets created in each building and views placed
- Print out of original building file

- **Pros**

- All details match
- Sheet numbers & Detail numbers same for each building
- Easy to update details

- **Cons**

- Details bubbles not being accurate
- Maintain dummy views / sheets
- Printing from multiple locations

Linked Detail File

- Details created in separate project file
- Views done in plans and elevations
- Detail project linked to all building files
- Reference detail view from link
- Duplicate views

- **Pros**

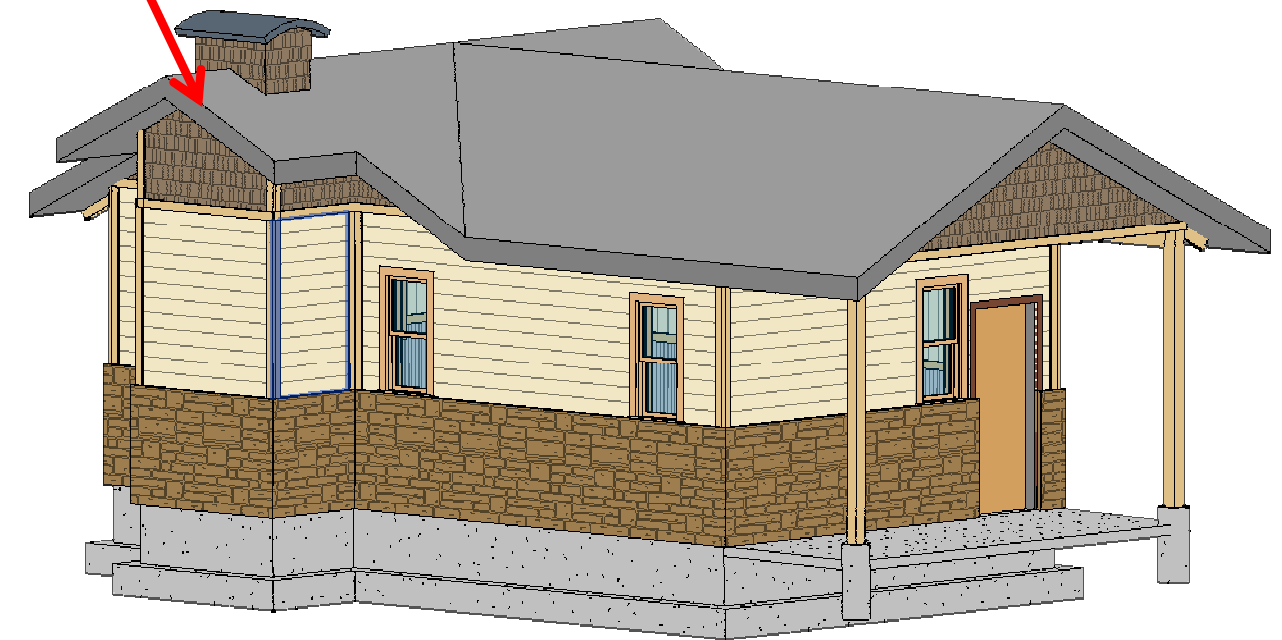
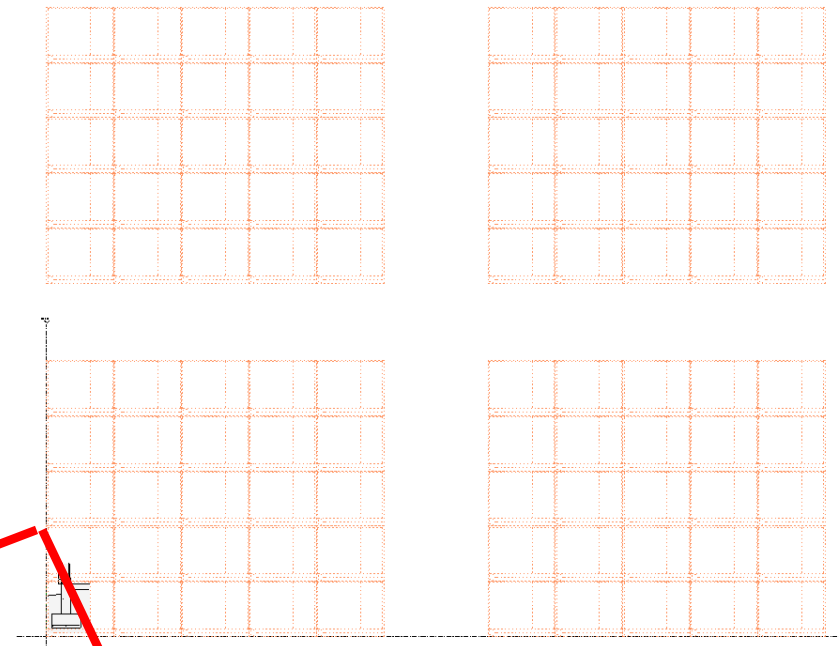
- All details match
- Sheet numbers & Detail may vary for each building
- Easy to update details
- Smaller building files

- **Cons**

- Initial set up
- Open another instance of Revit to change details
- Multiple plan view tags
- All details done in plans / elevations
- If the detail file is updated Revision clouds will have to be added to each project file

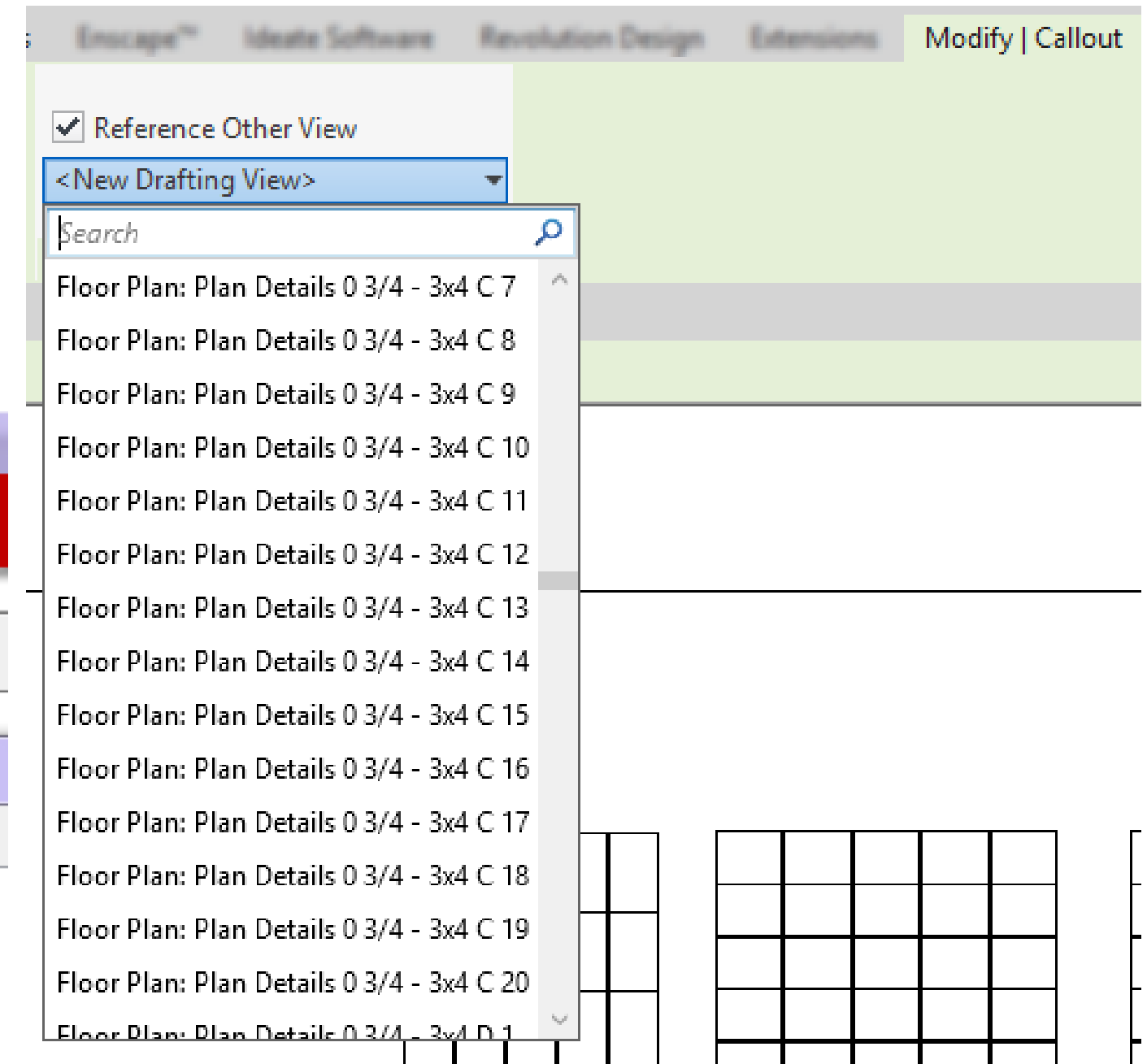
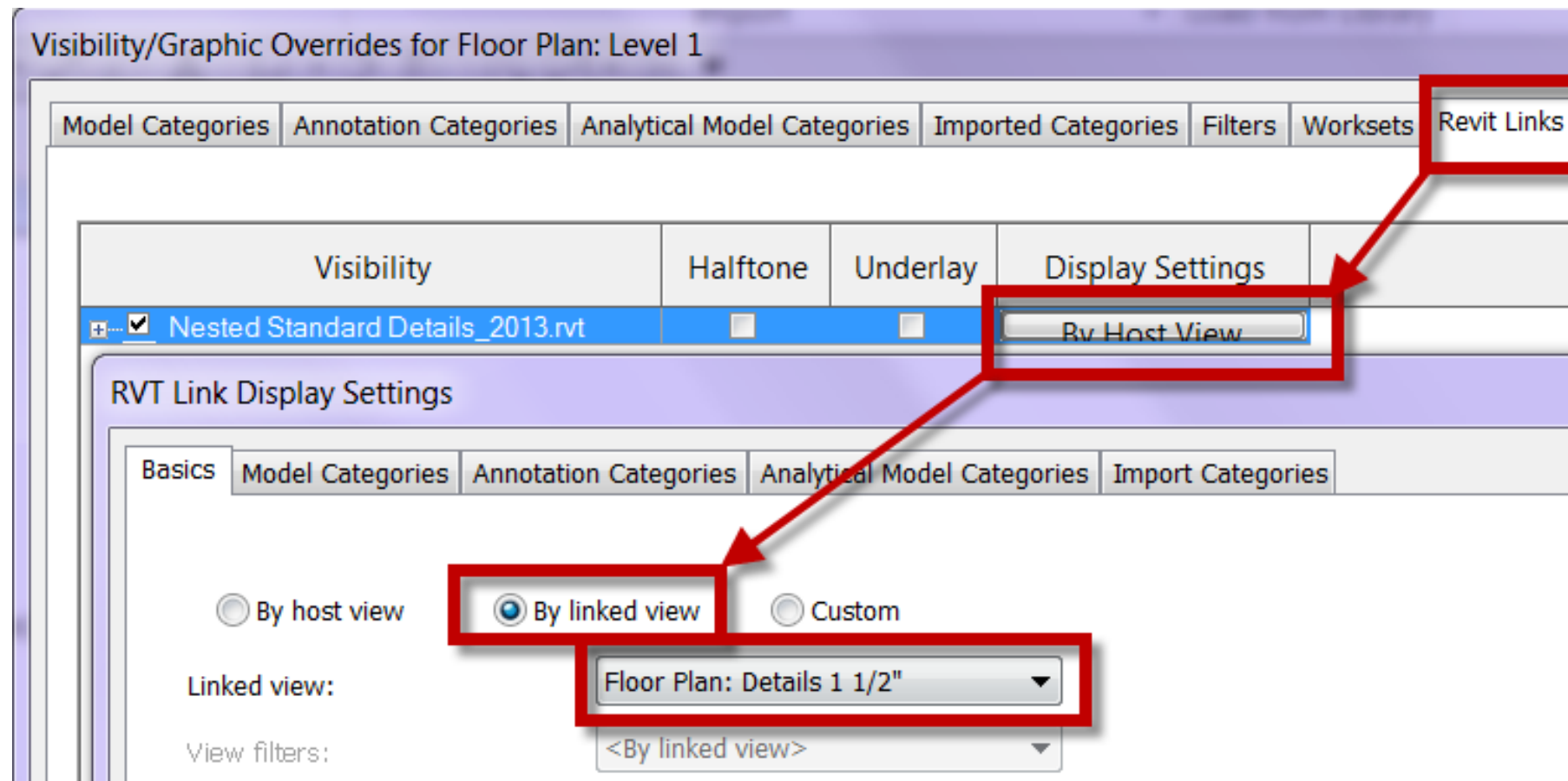
Linked Detail File

- Create Plan Detail
 - Add Guide Grid 3x3
 - Array Guide Grid
 - Wash rinse repeat



Project Building File

- Link Detail File
- Create detail views in each building
- Show link view per link
- Duplicate dependent views for each detail
- Reference call outs to the dependent views



Final Questions

- Please remember to fill out your survey
- Brian Mackey
- For more information

@ brian@bdmackeyconsulting.com

<http://bdmackeyconsulting.com/blog>

<http://revitradio.co>

<http://twitter.com/TheRevitGeek>

<http://linkedin.com/in/mackeybrian>



