

Easier Collaboration Using AutoCAD DWG Compare

Christopher Chen

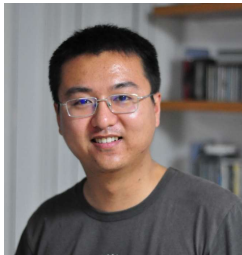
Product Owner & Sr. SQA Engineer

Ping Zou

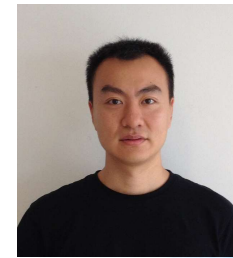
SW Architect



About the speaker

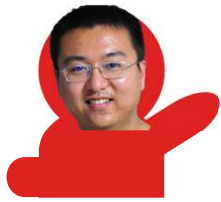


Developer



Tester

About the speaker



Client

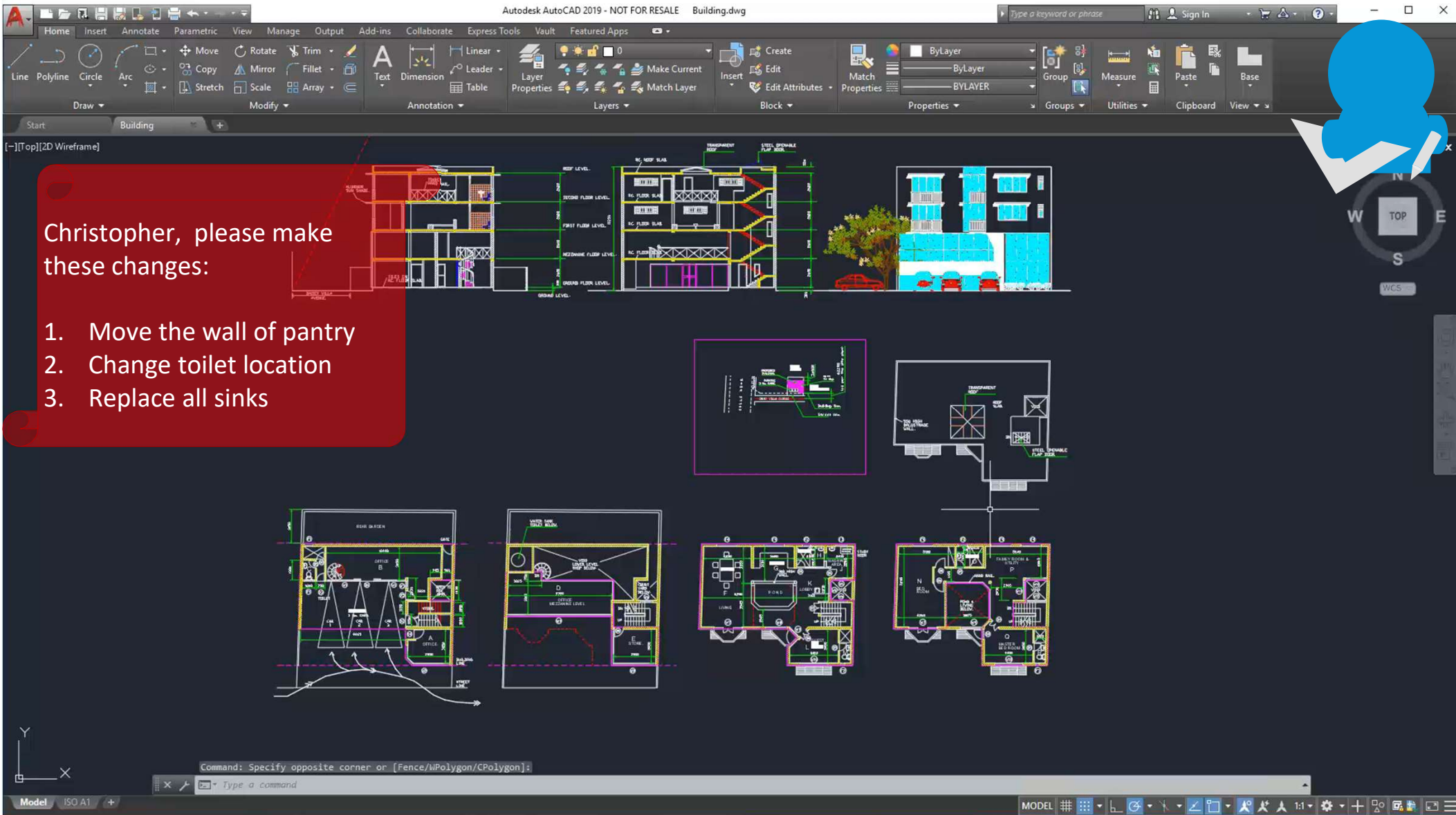


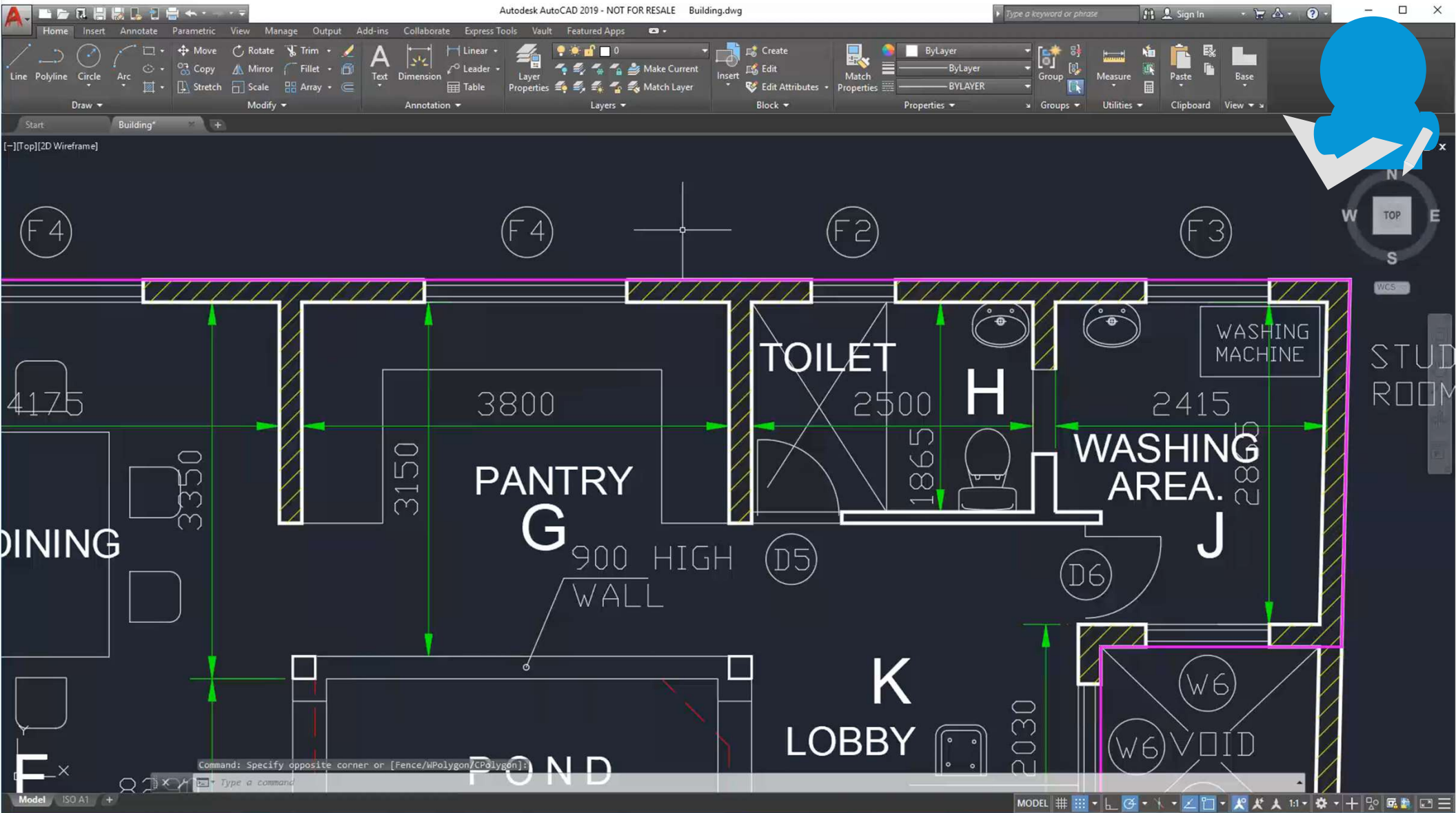
Drafter

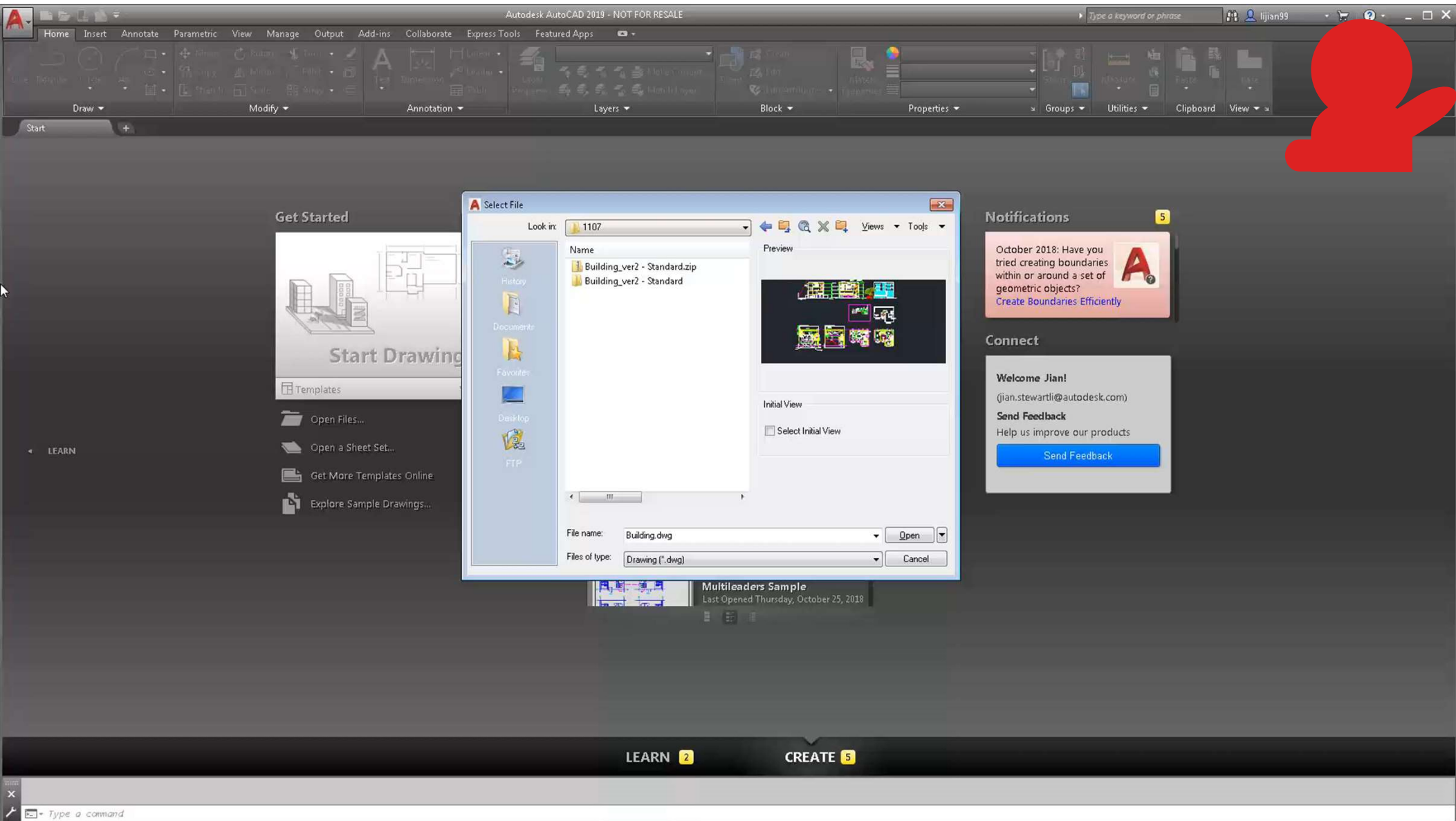
The background of the box art features a stylized, abstract architectural design. It includes a series of thin, grey lines that curve and intersect, creating a sense of depth and movement. A prominent red, angular structure, resembling a modern building or a piece of machinery, is positioned on the right side. The overall color palette is light, with soft greys and whites, accented by the vibrant red of the central structure and the Autodesk logo.

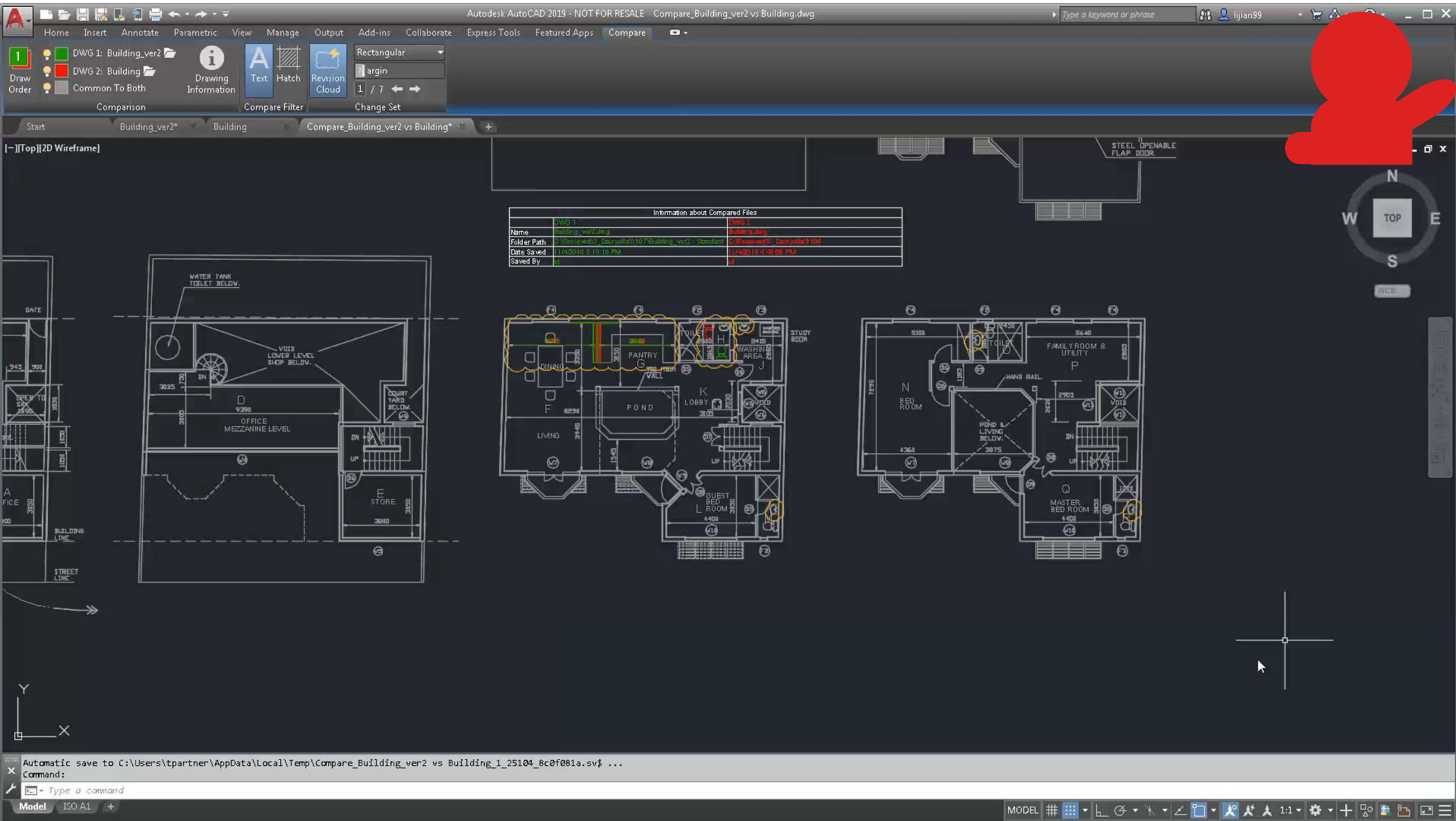
A AUTODESK®
AUTOCAD®
2019

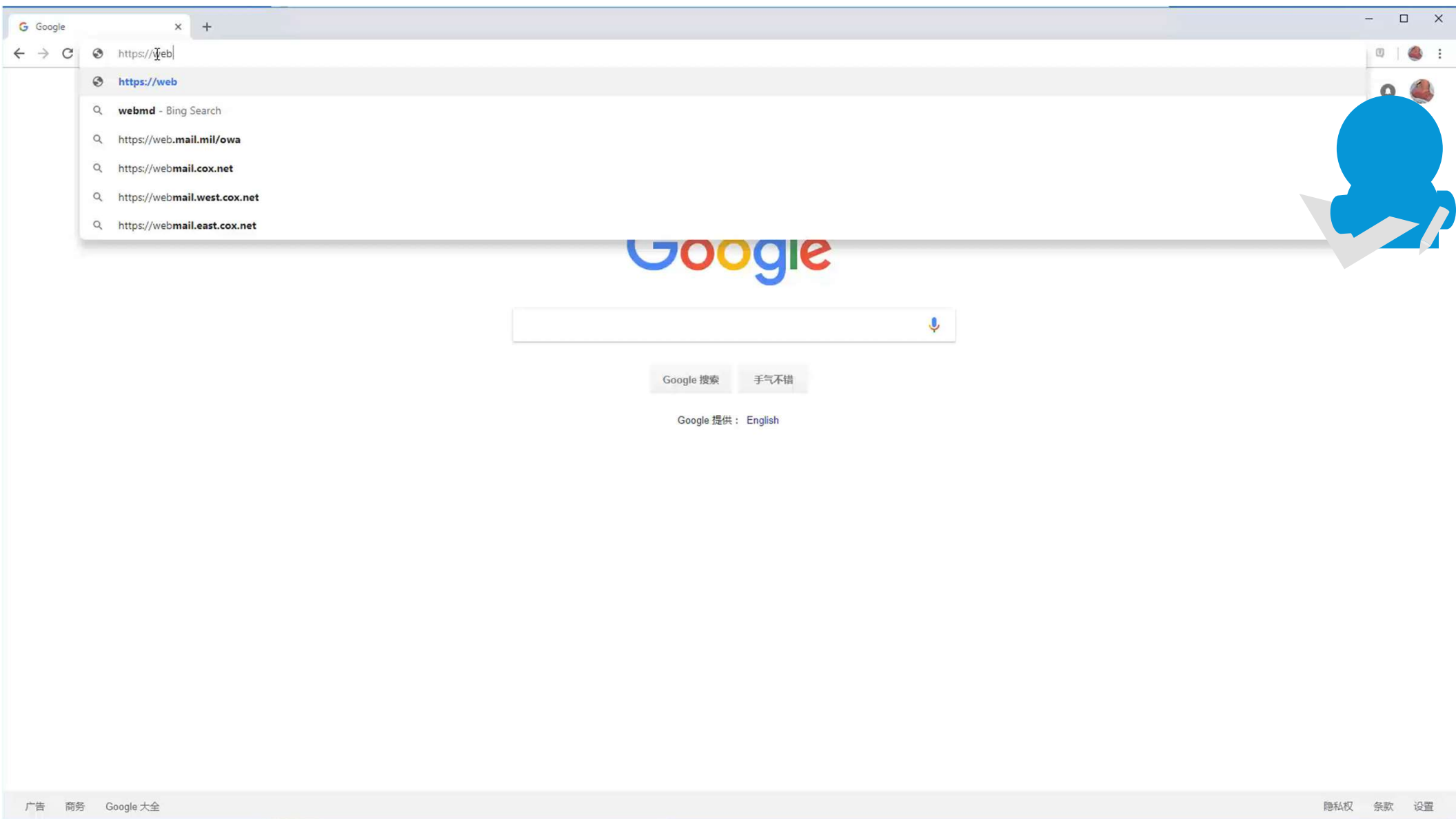
 **AUTODESK.**











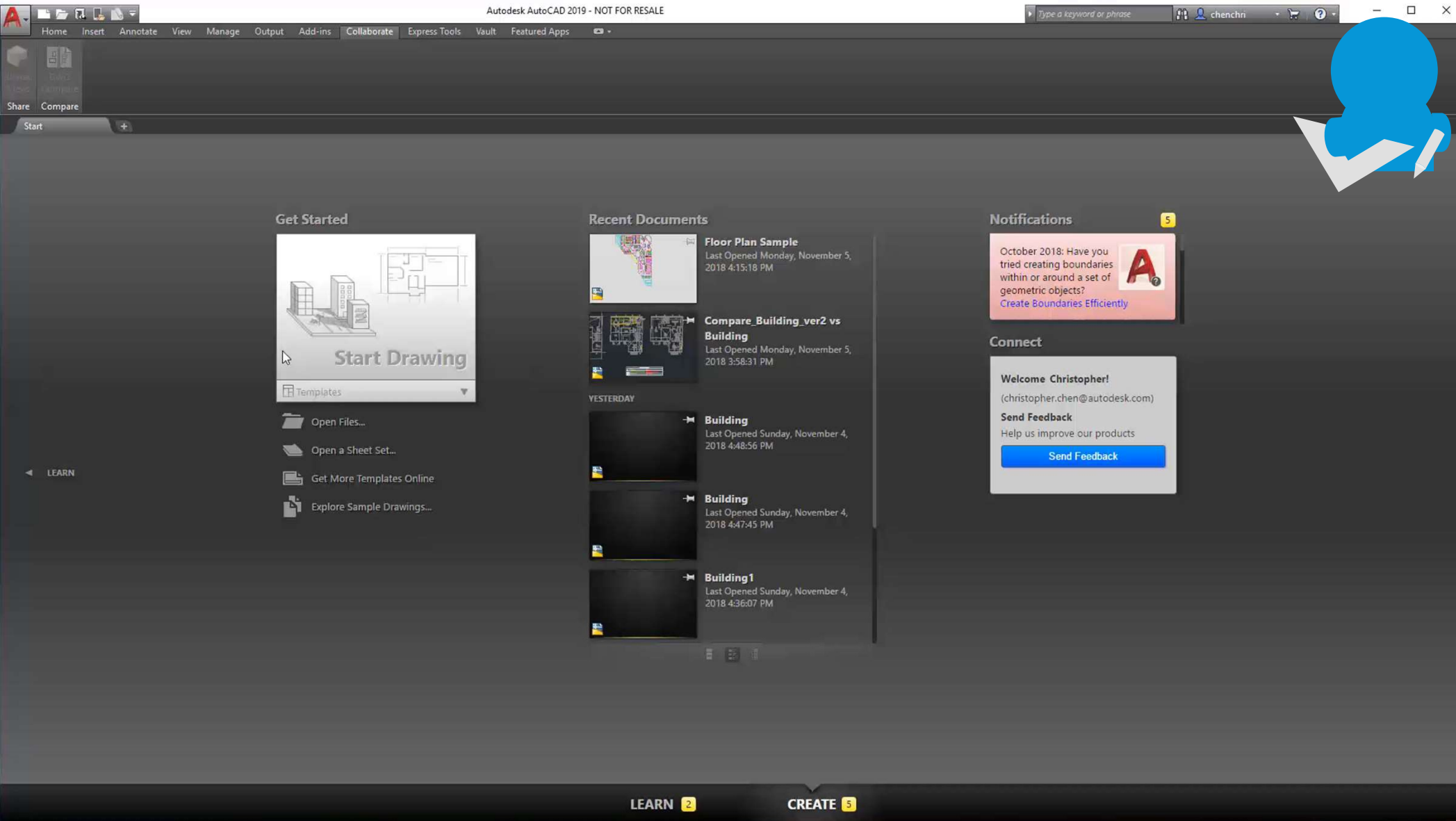
19:33 Mon Nov 5

52%



AutoCAD







Tips and Tricks

Comparing basic properties

COMPAREPROPS (System Variable)

Bitcode

Value	Description
0	Object property changes are not included in the drawing comparison
1	Color
2	Layer
4	Linetype
8	Linetype scale
16	Lineweight
32	Transparency
64	Thickness

Example: Color + Layer + 1 + 2 = 3

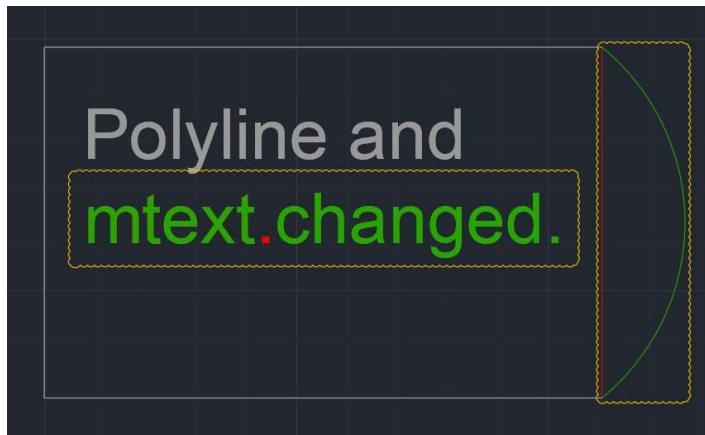
* ByLayer, ByBlock property values are not parsed

Sub-entity level compare

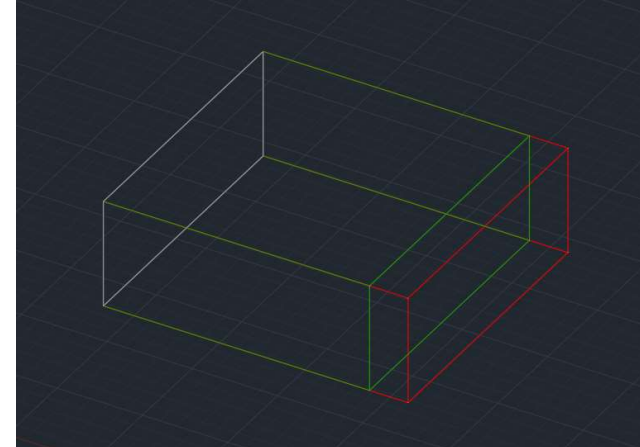
Comparing happens at sub-entity level

For Example,

Segments of a pline; one line of an mtext



Edges of a box



Ignoring slight shift

COMPARETOLERANCE (System Variable)

INTEGER 0-14

Lower value -> bigger tolerance

Example: 6 means first 6 digits after decimal point is compared

0.123456789

Batch compare

-COMPARE (Command)

-COMPARE <DWG1> <DWG2>

acad.exe /b compare.scr

_open <DWG1>

_CompareInPlace 1

_COMPARE <DWG1> <DWG2>

...

_saveas

*CompareInPlace is a hidden sysvar, for experimental use

Limitations

DISPLAY MODE

Compare colors are only available in 2D Visual Style.

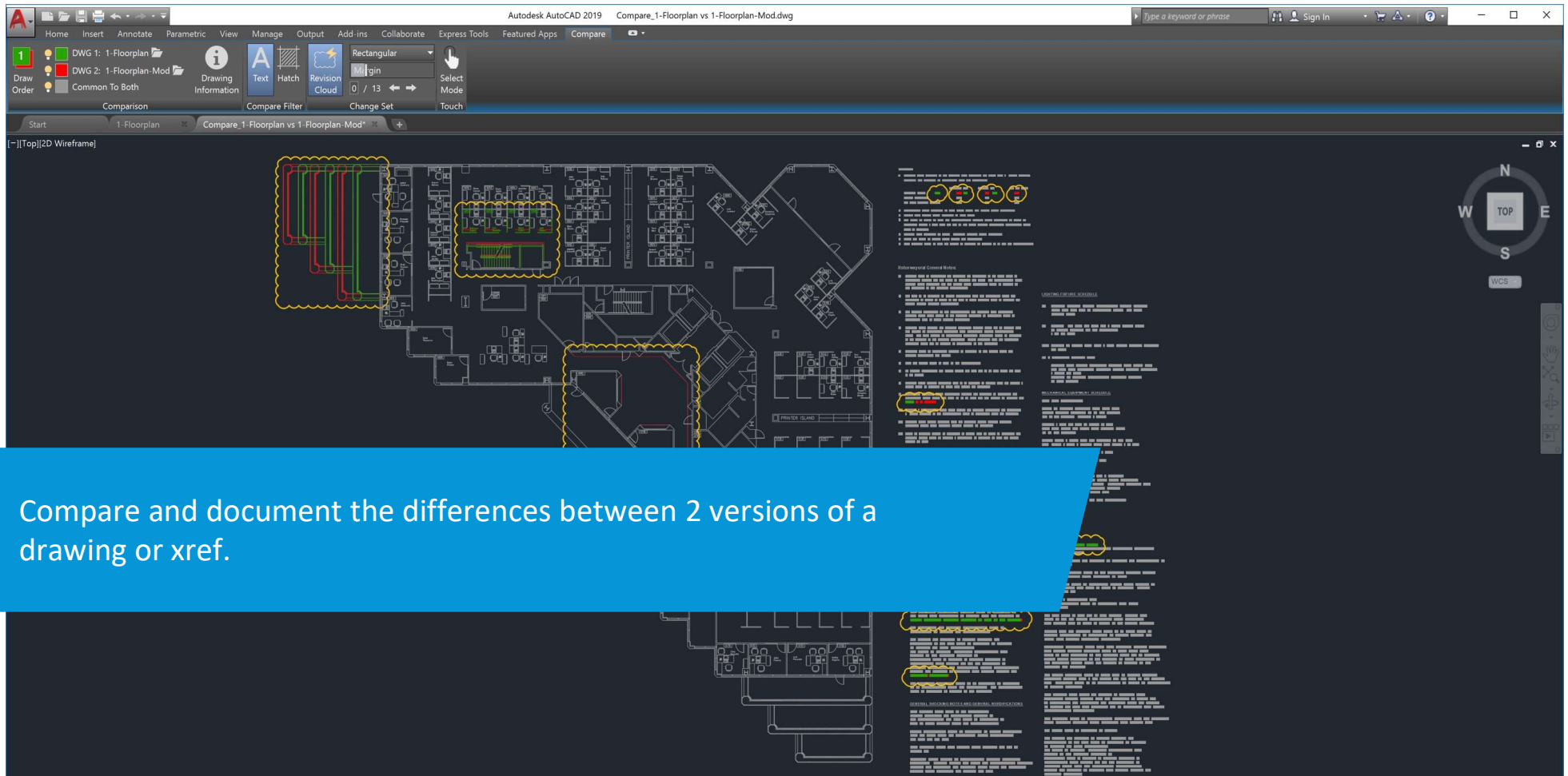
REVISION CLOUD

You can compare 3D objects, but revision clouds are generated in the view the model is compared. Changing view direction will make revision clouds invalid.

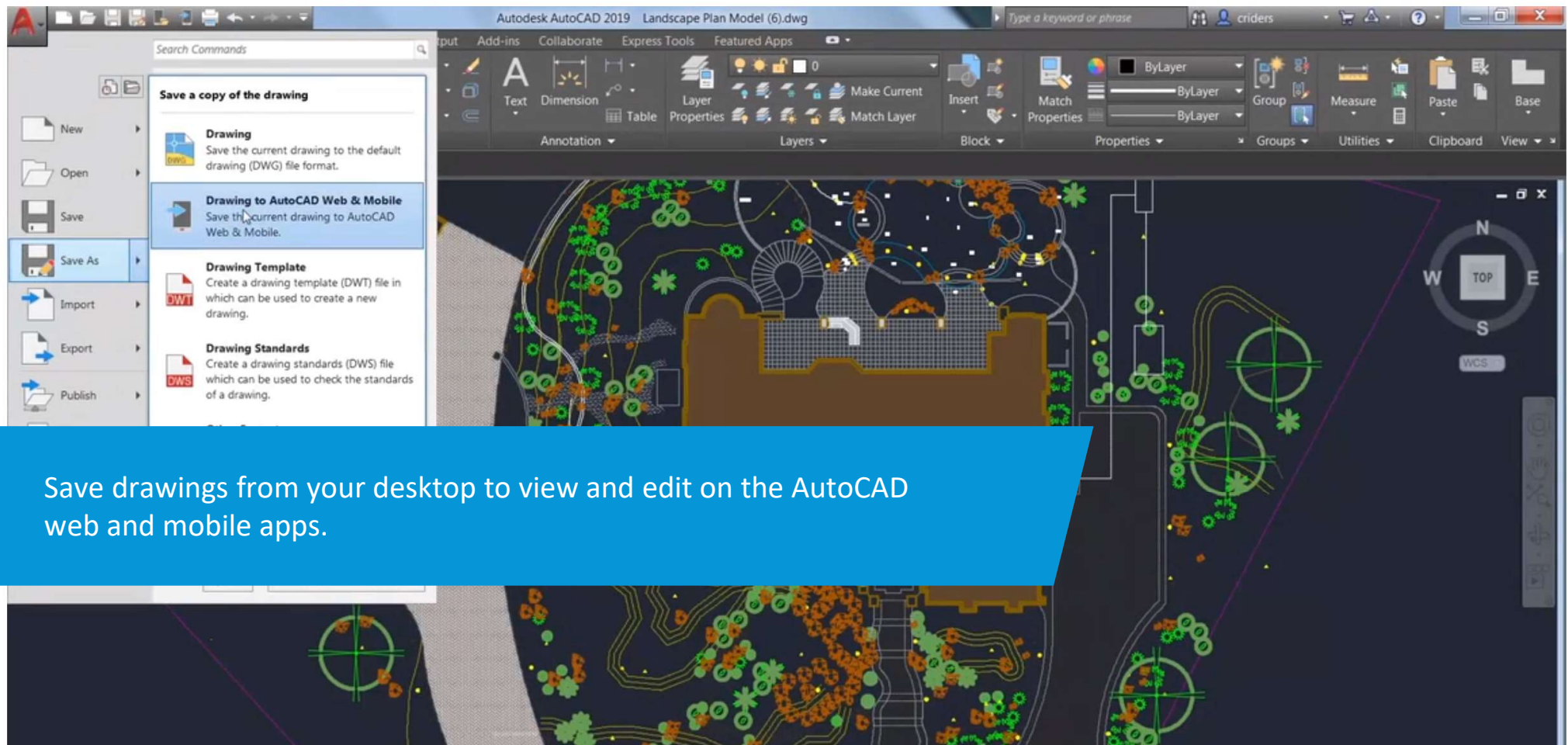
PAPER SPACE

Objects in paper space are not participating in compare.

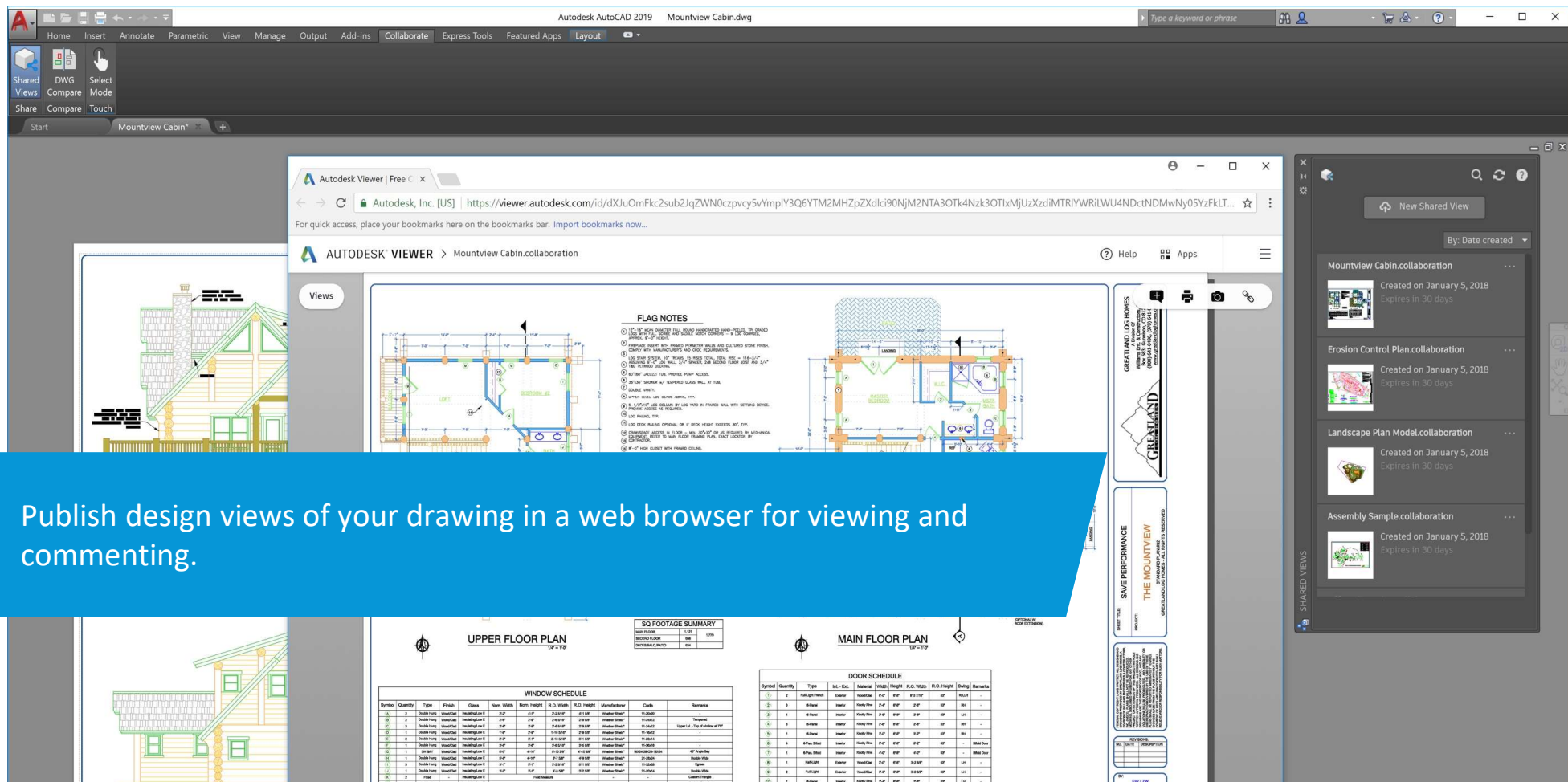
DWG Compare

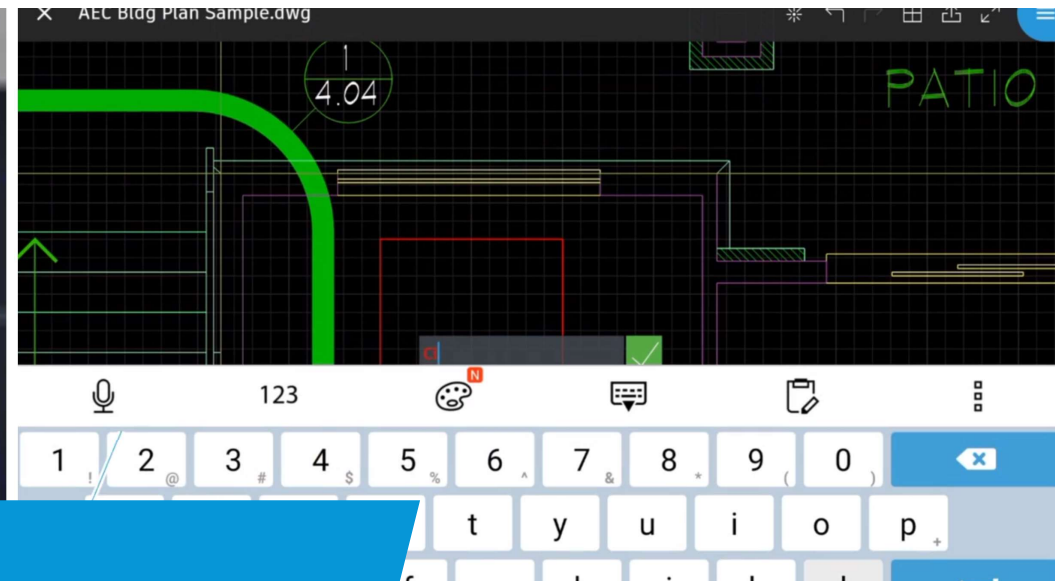
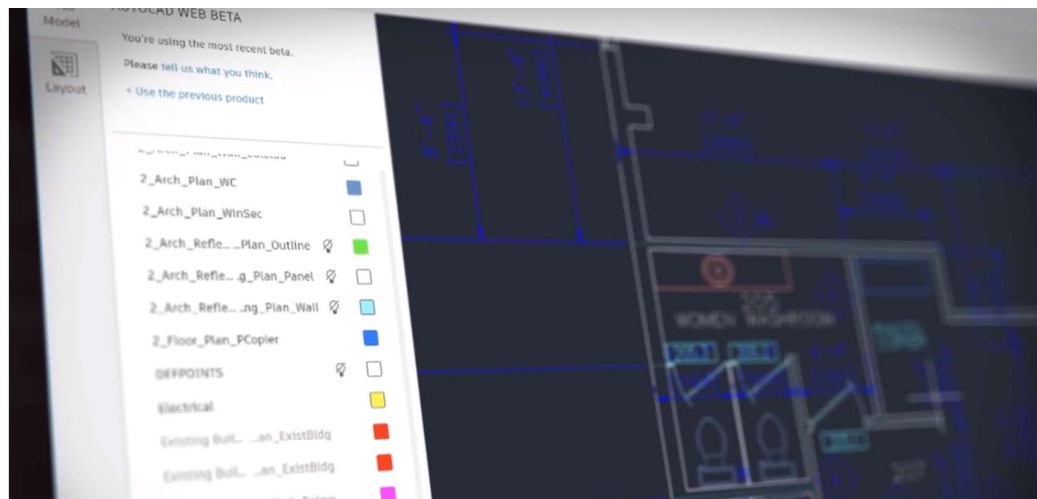


Save to web and mobile



Shared View





Work anywhere with included mobile, web apps

AutoCAD web app

With no install required, simply log in to view, edit, annotate, and create drawings quickly in your local web browser.

AutoCAD mobile app

View, edit, annotate, and create drawings on the go and in the field from a mobile device.

A AUTODESK®
AUTOCAD®
2019

A AUTODESK®
AUTOCAD LT®
2019

Collaboration Made Easier ❤️ ❤️ ❤️

A AUTODESK®

A AUTODESK®



ARCHITECTURE
TOOLSET



ELECTRICAL
TOOLSET



MECHANICAL
TOOLSET



PLANT 3D
TOOLSET



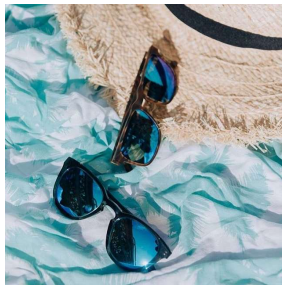
MEP TOOLSET



MAP 3D TOOLSET



RASTER DESIGN
TOOLSET



SHARE
YOUR
STORY



Want to be featured by AutoCAD?

We want to hear your story!

Go to: autode.sk/autocadstory

We know that the best way to tell the AutoCAD story is to tell the stories of you, the people who use it. Tell us your project for a chance to be featured by AutoCAD.



Feedbacks & Requests

Christopher.Chen@autodesk.com



AUTODESK[®]

Make anything[™]

Autodesk and the Autodesk logo are registered trademarks or trademarks of Autodesk, Inc., and/or its subsidiaries and/or affiliates in the USA and/or other countries. All other brand names, product names, or trademarks belong to their respective holders. Autodesk reserves the right to alter product and services offerings, and specifications and pricing at any time without notice, and is not responsible for typographical or graphical errors that may appear in this document.

© 2018 Autodesk. All rights reserved.

