

Effective File Sharing using Design Collaboration

Chris Aquino

BIM 360 Design Adoption Marketing Manager





About the me

I studied architecture at the University of Oregon, and practiced in Boston focusing on adaptive reuse, residential, and urban planning.

I've been at Autodesk since 2011 supporting and driving adoption of Revit and Collaboration for Revit now BIM 360 Design.

#GoDucks #RCTID #Heshteg

Safe harbor statement

During the course of this presentation, we may make statements regarding future events and/or statements regarding planned or future development efforts for our existing or new products and services. We wish to caution you that such statements reflect our current expectations, estimates and assumptions based on factors currently known to us and that actual events or results could differ materially. Also, these statements are not intended to be a promise or guarantee of future delivery of products, services or features but merely reflect our current plans, which may change. Purchasing decisions should not be made based upon reliance on these statements. The statements made in this presentation are being made as of the time and date of its live presentation. We do not assume any obligation to update any statements we make to reflect events that occur or circumstances that exist after the date of this presentation.

Learning Objectives

- Understand the managed file sharing workflow using the Design Collaboration module

Overview

- Understand the Design Collaboration module
- Team spaces vs. shared space
- Understanding packages
- Understanding the shared vs. consumed folders
- How to get information into and out of Document Management

What is Design Collaboration?



BIM 360

Enterprise Integration & Insight (IQ)

Design
Collaboration



Model
Coordination



Project
Management



Cost
Management



Planning &
Scheduling



Field
Management



Building
Operations



Quantum



Document Management (CDE)

Revit
Work Sharing

Civil 3D
Work Sharing

InfraWorks
Work Sharing

Plant
Work Sharing

Upload &
Download

Forge Platform

Administration

What does Design Collaboration do?

- Provides a project timeline of the exchange of Revit deliverables between teams
- Automated and always up-to-date viewing experience, even for those not working in Revit
- A managed process of data exchange between teams
- Change visualization

What doesn't Design Collaboration do?

- Only displays and supports Cloud workshared Revit models

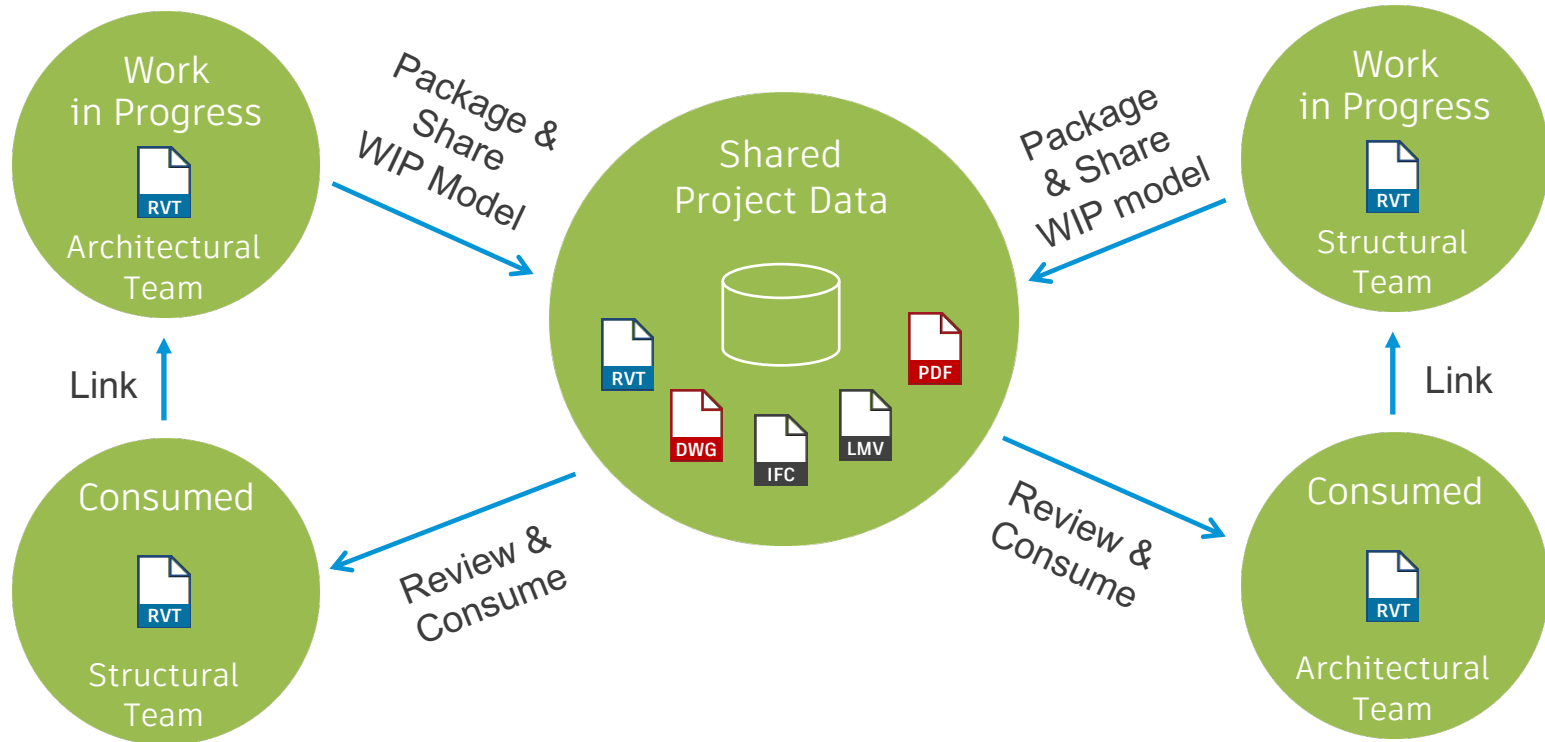
Team vs Shared spaces



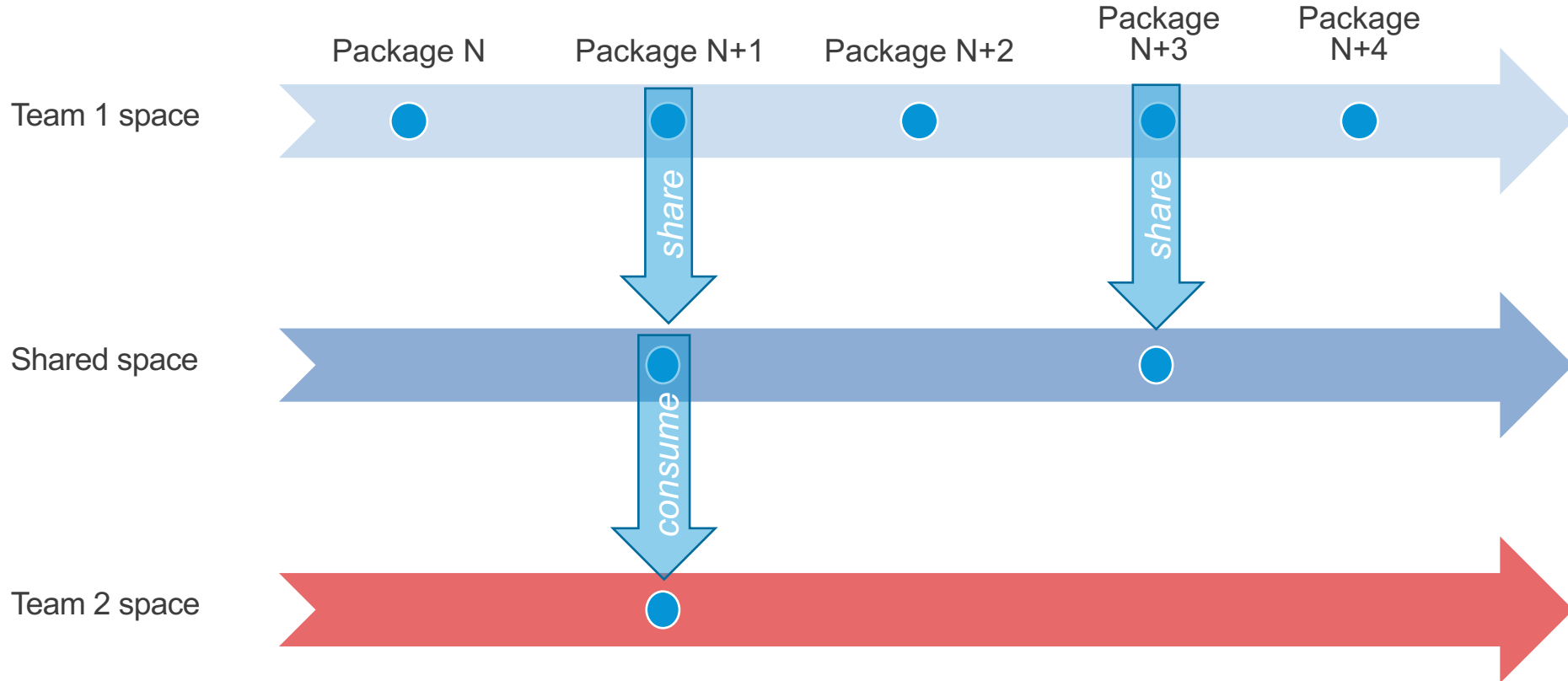
Terminology

- **Team Space** – Folder where the work in progress models live
- **Shared Space** – Folder where models are made available to other teams
- **Set** – Views and/or sheets published from Revit
- **Package** – Set plus the Revit model
- **Share** – Make a package available to the other teams in the Shared Space
- **Consume** – Copy a package from the shared space to a Team Space

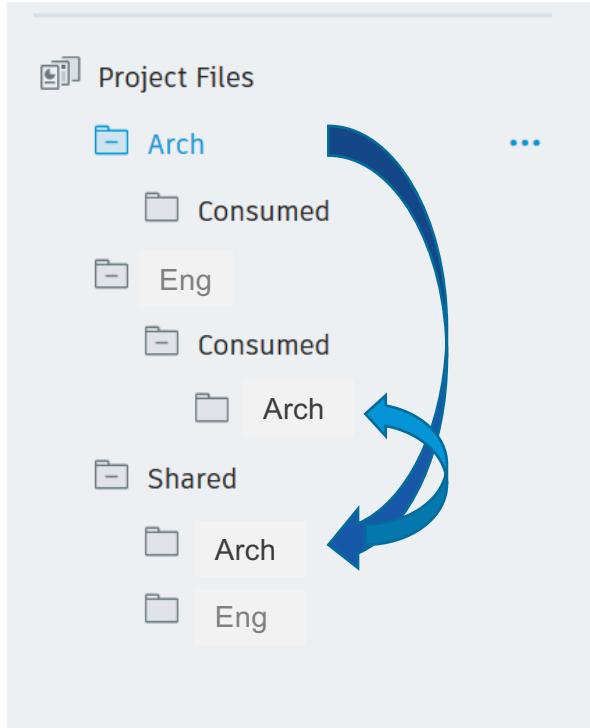
Managed Trust Environment



Sharing and Consuming a package



Sharing and Consuming a package

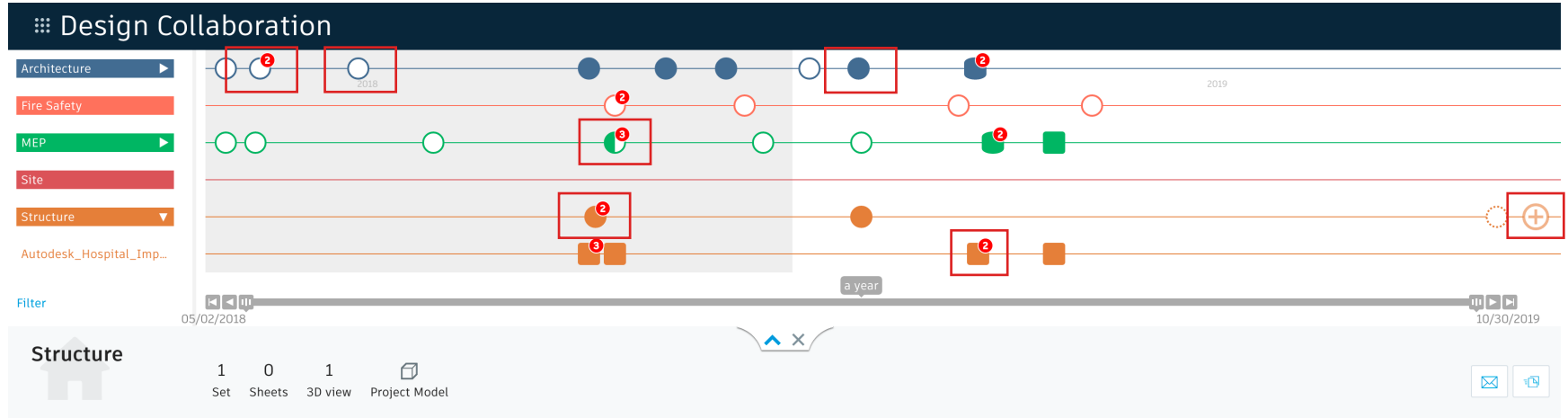


Team Arch creates a package.

Team Arch **shares** the package

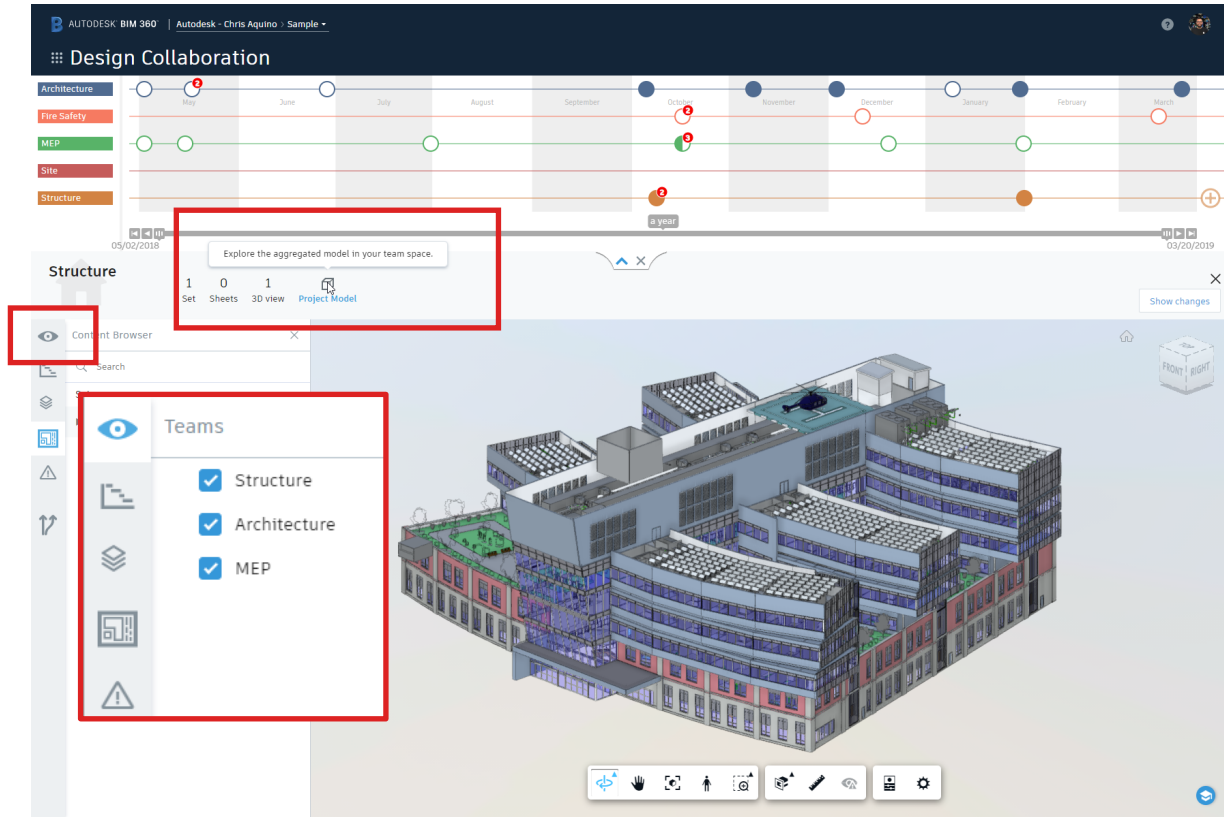
Team Eng **consumes** the package

Package Status



- Multiple parallel design packages for MEP, Fire Safety, and Architecture have been consumed

Project Model



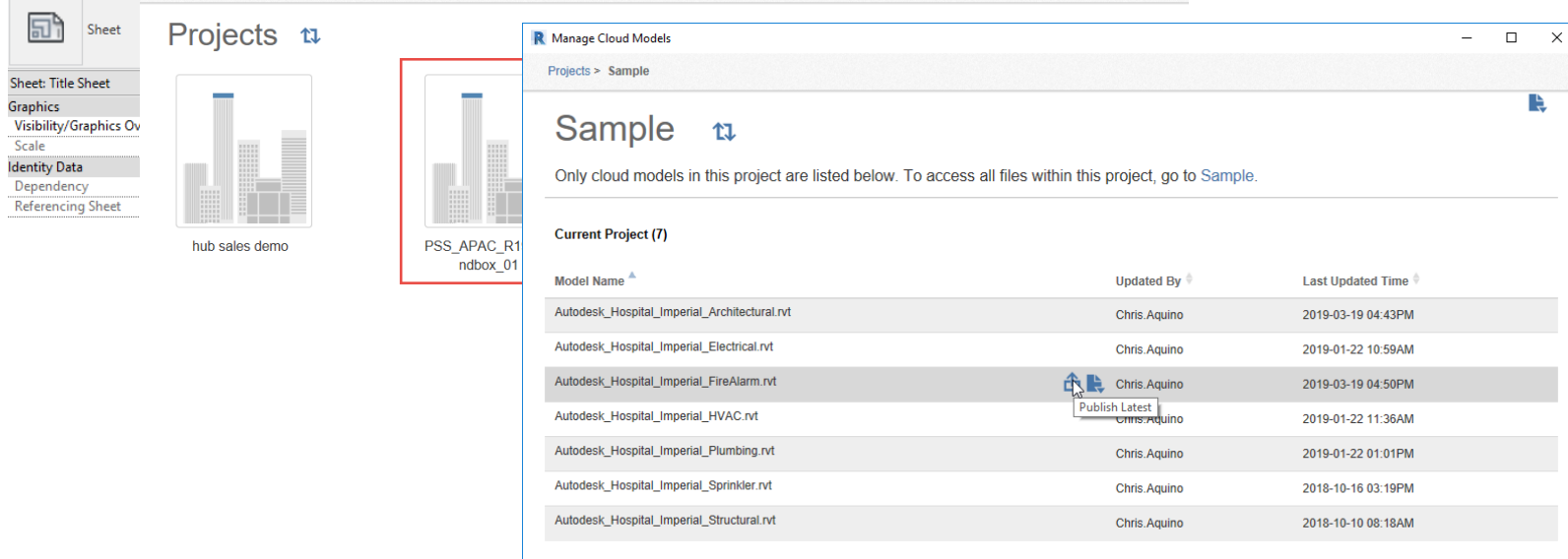
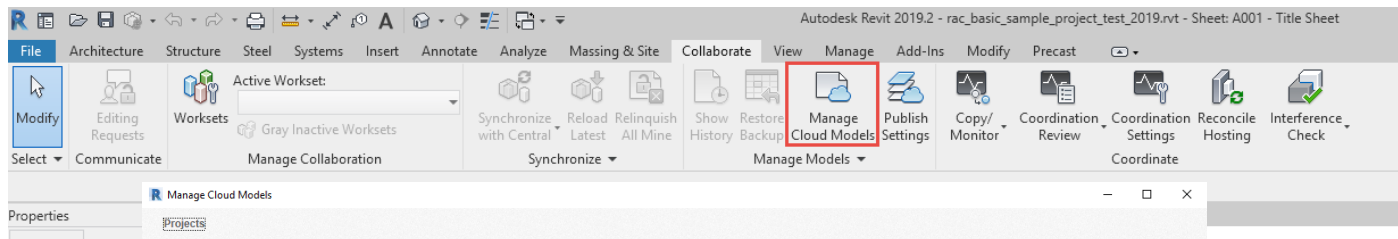
Making data available for the Design Collaboration module



Making data available

- Design Collaboration looks at the models in the Team folder and aggregates the WIP model and any linked consumed models
- Models have to be either initiated from Revit

Publishing from Revit



Scheduled publishing

AUTODESK BIM 360 | Autodesk - Chris Aquino > Sample

Design Collaboration

Architecture
MEP
Site
Structure
Fire Safety

05/02/2018 03/20/2019

Fire Safety

2 Sets 0 Sheets 2 3D views

Search

Sets	Sheets
Autodesk_Hospital_Imperial_FireAlarm.rvt	0
Autodesk_Hospital_Imperial_Sprinkler.rvt	0

Schedule publish

Schedule regular publishing of your team's data

Weekly Day Time

Close

You have no issues yet

The screenshot displays the Autodesk BIM 360 Design Collaboration interface. At the top, the header shows the Autodesk BIM 360 logo and the user 'Autodesk - Chris Aquino' with a dropdown arrow. Below the header, the 'Design Collaboration' section is active. On the left, a sidebar lists project categories: Architecture, MEP, Site, Structure, and Fire Safety. The main area features a Gantt chart with a timeline from May 2018 to March 2019. The chart has horizontal lines for each category, with colored circles indicating scheduled events. A red circle with a '2' is visible in May, and another red circle with a '1' is in October. A red circle with a '+' is in March. A 'Schedule publish' dialog box is overlaid on the chart, featuring a title bar with a close button, a toggle switch, and a description: 'Schedule regular publishing of your team's data'. Below this, there are three dropdown menus: 'Weekly', 'Day', and 'Time'. A blue 'Close' button is at the bottom right of the dialog. At the bottom of the interface, a message states 'You have no issues yet'.

B AUTODESK® BIM 360® | Autodesk - Chris Aquino > Sample ▾

Fire Safety

MEP

Site

Structure

Architecture

05/02/2018

10 months

03/13/2019

Architecture

1

Set

4

Sheets

0

0 views

Project Model

Search

[Update to latest](#)

Schedule publish

All my team's issues

Sets

Sheet

3D views

Update date ▼

elevations

4

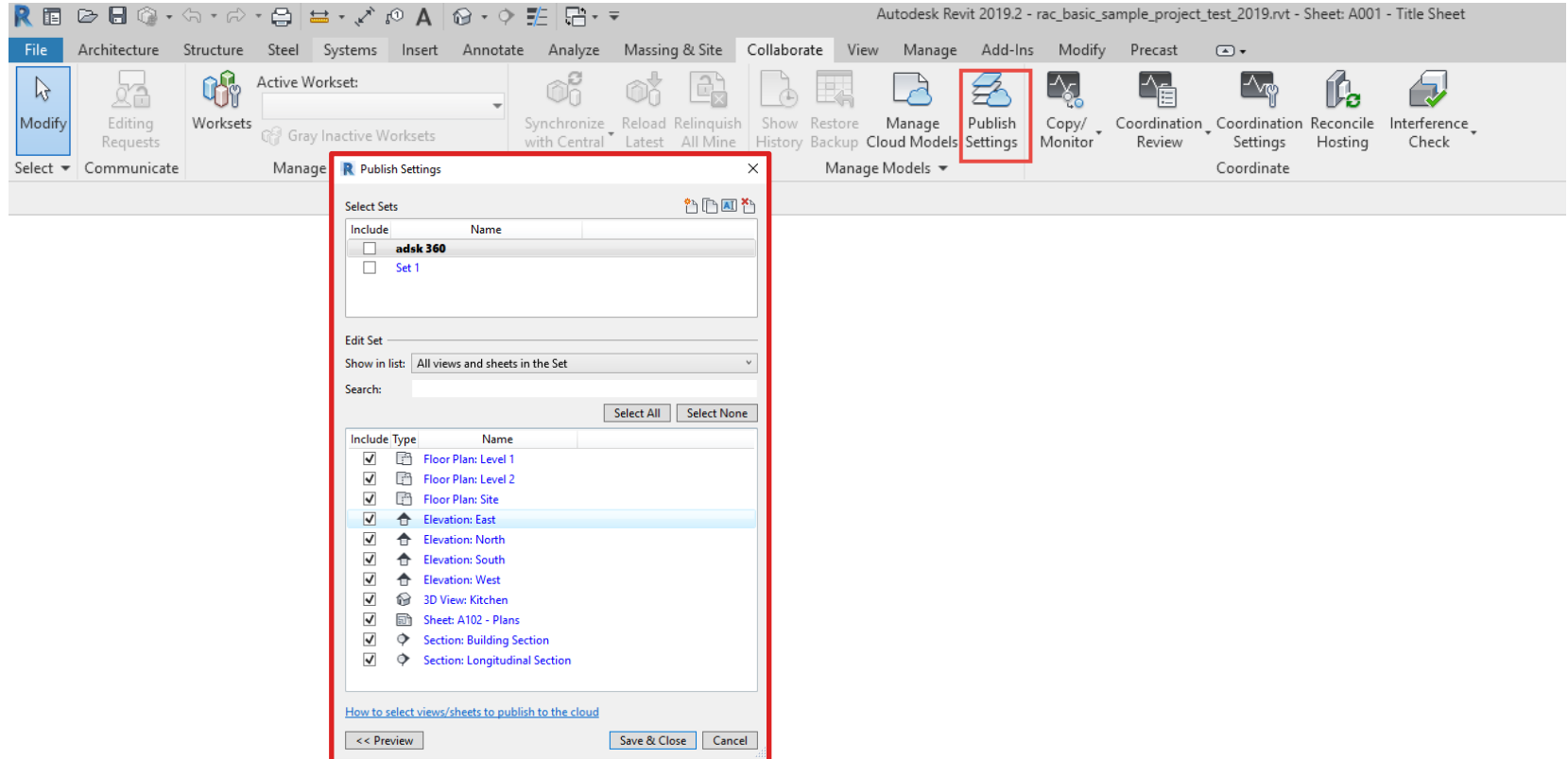
0

Mar 19, 2019 5:09 PM

You have no issues yet



Select Views for Publishing



Change Visualization



Change Visualization

The screenshot displays the Autodesk BIM 360 Design Collaboration interface. At the top, the header shows "AUTODESK BIM 360" and "Autodesk - Chris Aquino > Sample". Below this, the "Design Collaboration" section is visible. A timeline at the top shows months from May to March, with a "Fire Safety" project highlighted in red. The main view is titled "Fire Safety" and shows a "Project Model" with 2 Sets, 0 Sheets, and 2 3D views. A "Change visualization" panel on the left shows a summary of changes: 0 Added, 0 Removed, and 760 Modified. Below this, a "Disciplines affected" section lists various fire safety components. A central "INFORMATION" dialog box for the "Fire Alarm Control Panel" displays a table of changes between the "Shared" and "About to share" states. The background shows a 3D model of a building structure with fire safety components highlighted.

Change visualization

Details
Shared vs. About to share
Project Model

0 Added 0 Removed 760 Modified

Disciplines affected Modification type

Search + Filter

Flat Result List Result as Tree

- Fire Alarm Control Panel
- Fire Alarm Control Panel
- Fire Alarm Control Panel
- Fire Alarm Control Panel
- Fire Alarm Control Panel
- Fire Alarm Control Panel
- Fire Alarm Horn Strobe - Ceiling Mounted
- Fire Alarm Horn Strobe - Ceiling Mounted
- Fire Alarm Horn Strobe - Ceiling Mounted

INFORMATION

< Fire Alarm Control Panel >

Changes between Shared & About to share

▶ Assembly Description to	undefined
▶ Code Name to	undefined
▶ Edited by to	undefined
▶ Edited by to	undefined
▶ Electrical Data to	undefined
▶ Host to	undefined
▶ Location to	undefined
▶ OmniClass Number to	undefined
▶ OmniClass Title to	undefined
▶ Supply From to	undefined
▶ Type Image to	undefined
▶ Type Name to	undefined
▶ Workset to	Zone - Wing A
▶ Workset to	undefined

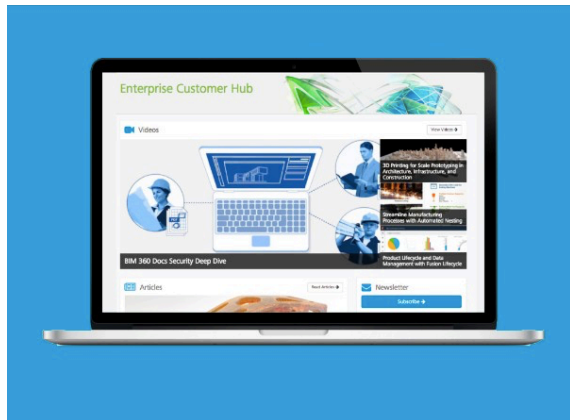
Show in model

Shared About to share

Questions?



The Customer Success Learning Hub



The Hub:
A Place to Learn,
Connect, and Share
Expertise.

- Access to articles, product updates, tips and tricks, and more
- View previous webcasts
- Browse upcoming webcasts and live events
- Share expertise with industry peers and product teams

<https://enterprisehub.autodesk.com>



Live Demo





AUTODESK®

Make anything™