

Seamless Revit Collaboration (and More!) with BIM 360 Design

Aaron Vorwerk

Sr. Technical Marketing Manager, Buildings, Autodesk | @AaronVorwerk

Chris Aquino

Adoption Marketing Manager, BIM 360 Design, Autodesk | @Aquinostructure



About the speakers

Aaron Vorwerk, AIA, NCARB, EIT, LEED AP BD+C

A registered architect, civil/structural engineer-in-training, sustainability professional, and AEC technology evangelist, Aaron leads the global Building Technical Marketing team for Autodesk.



Chris Aquino

A 9-year veteran of Autodesk, Chris is the Adoption Marketing Manager for BIM 360 Design, bringing his experience in architectural practice to bear in his current focus on learning and adoption content and messaging.

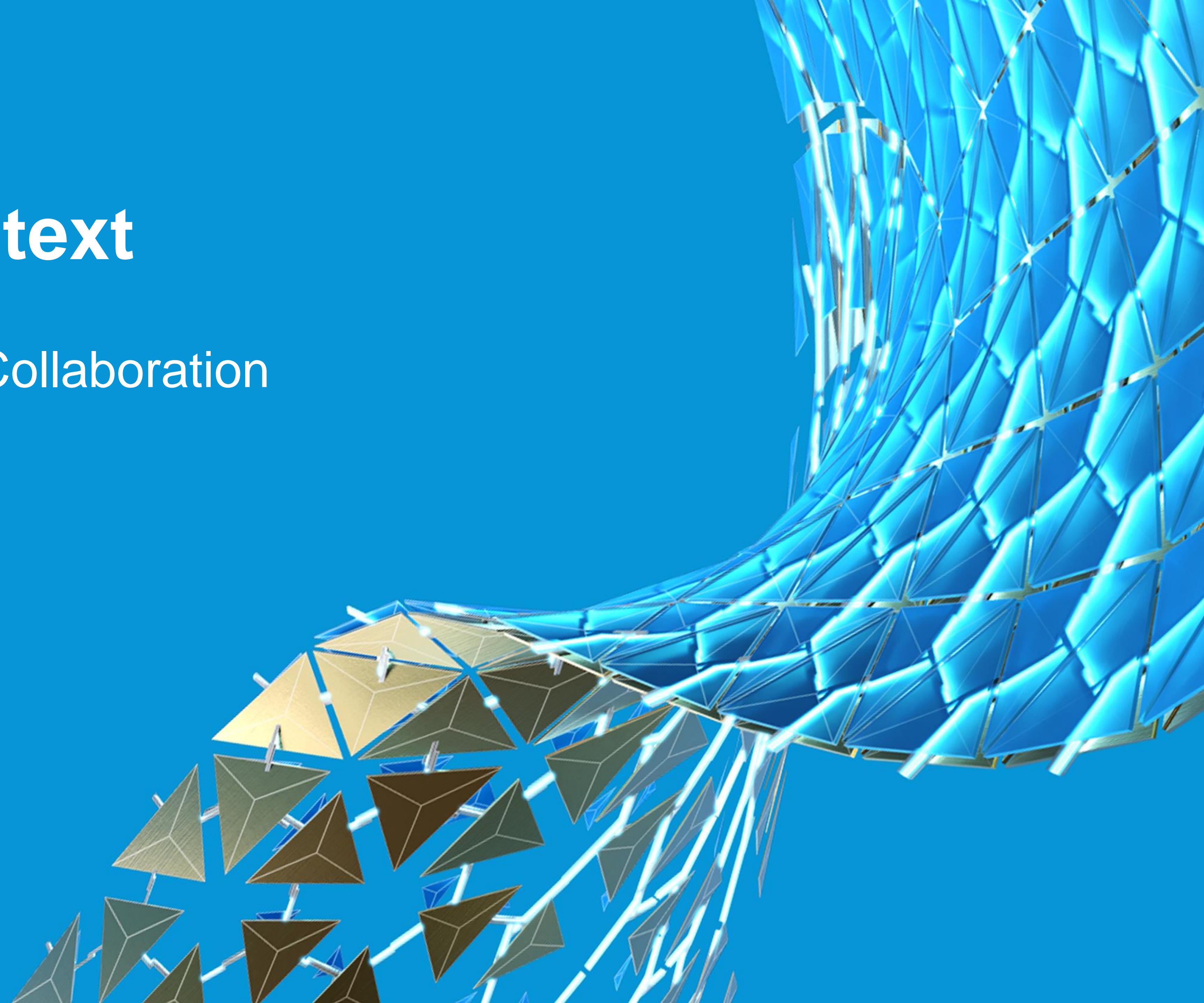
Agenda

- **Industry Context**
- **BIM 360 Design**
 - Overview
 - Key Capabilities
 - Collaboration
 - Communication
 - Security
- **Customer Stories & Adoption**
- **Resources**



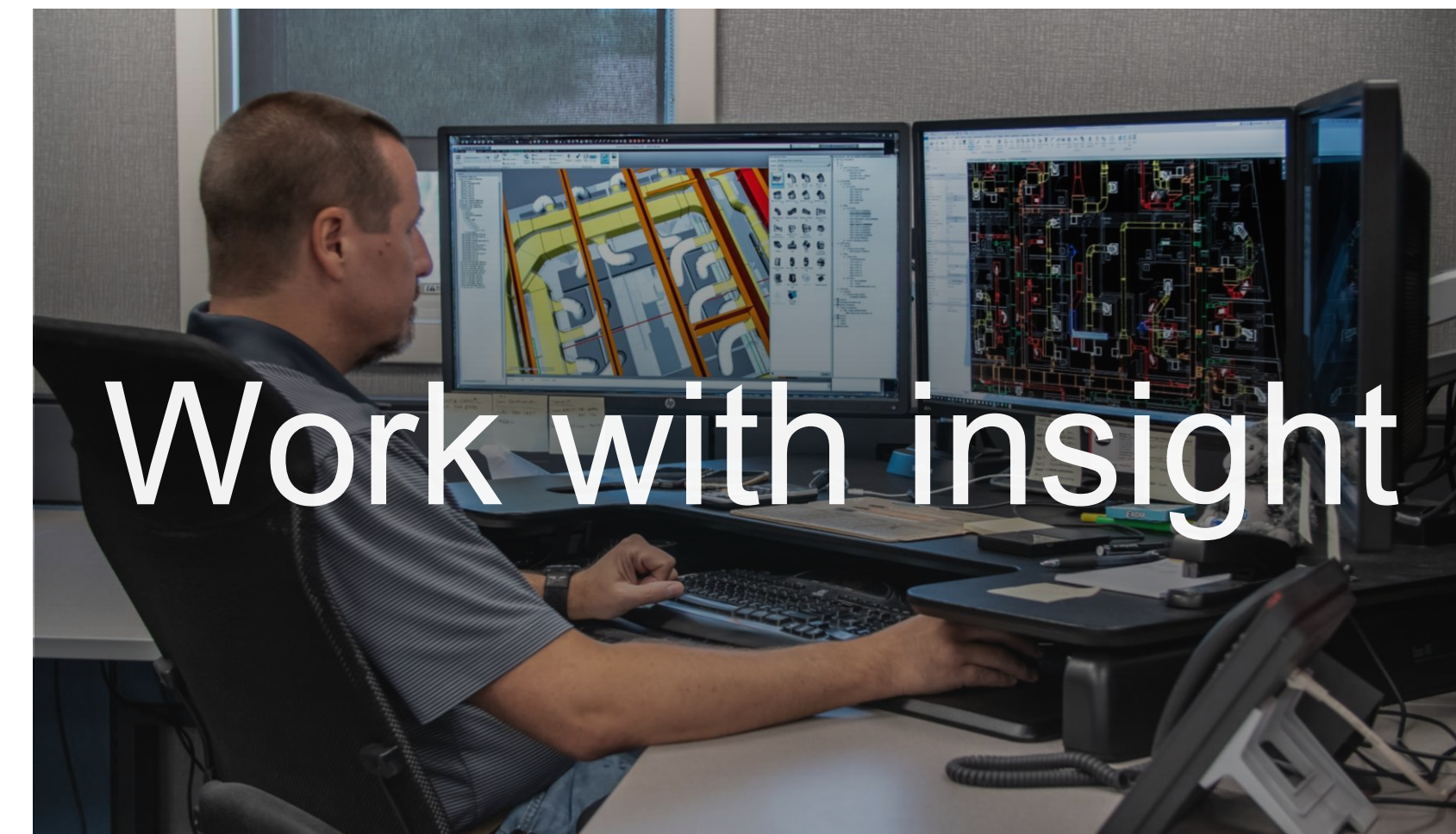
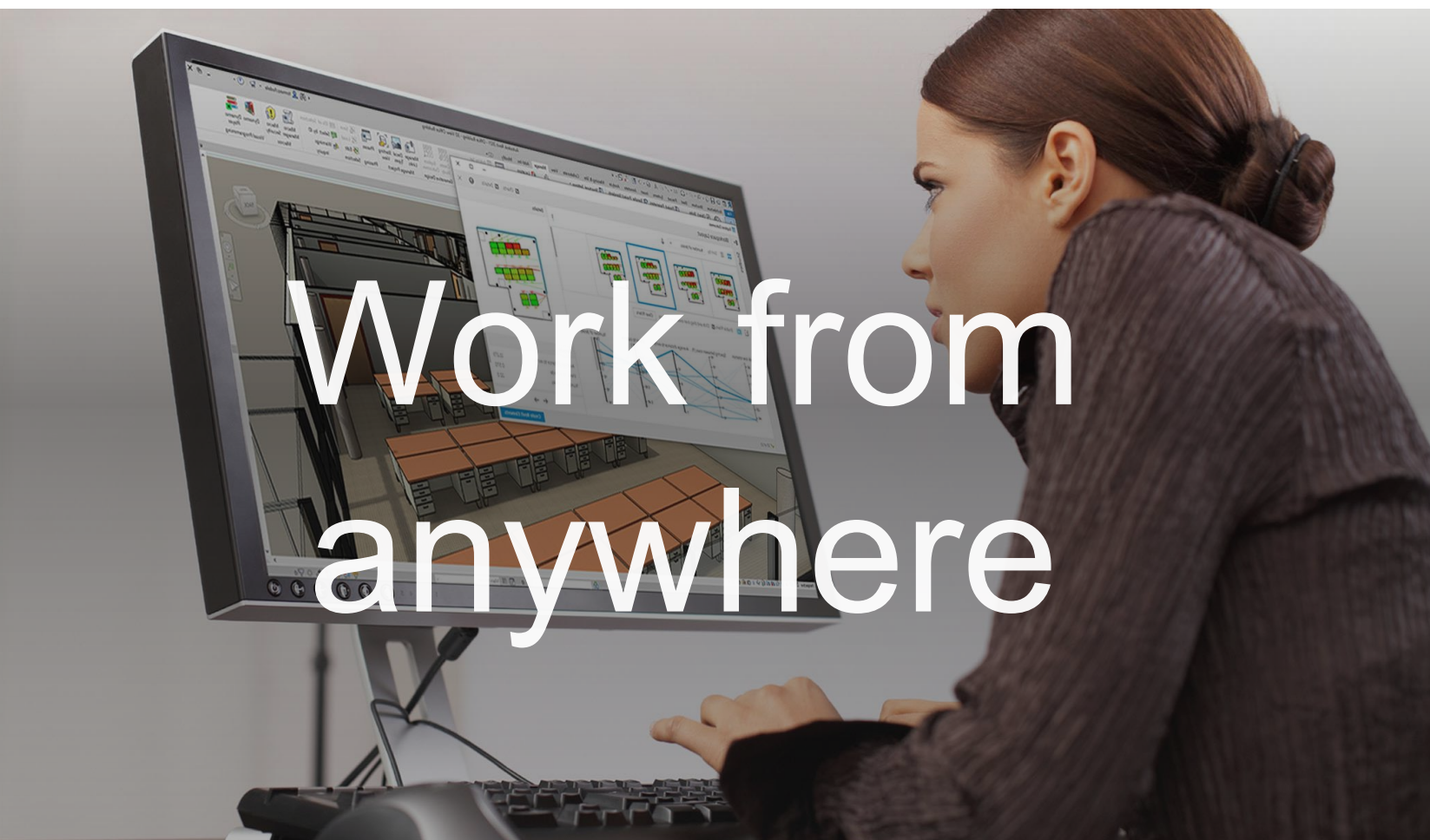
Industry Context

The Importance of Collaboration



Business needs are changing

Stay competitive while navigating uncertainty



Business continuity depends on rapid mobilization for anytime, anywhere work

Empower your team with the ability to flexibly adapt to changing needs

Move faster and more efficiently, leveraging data for better decision-making

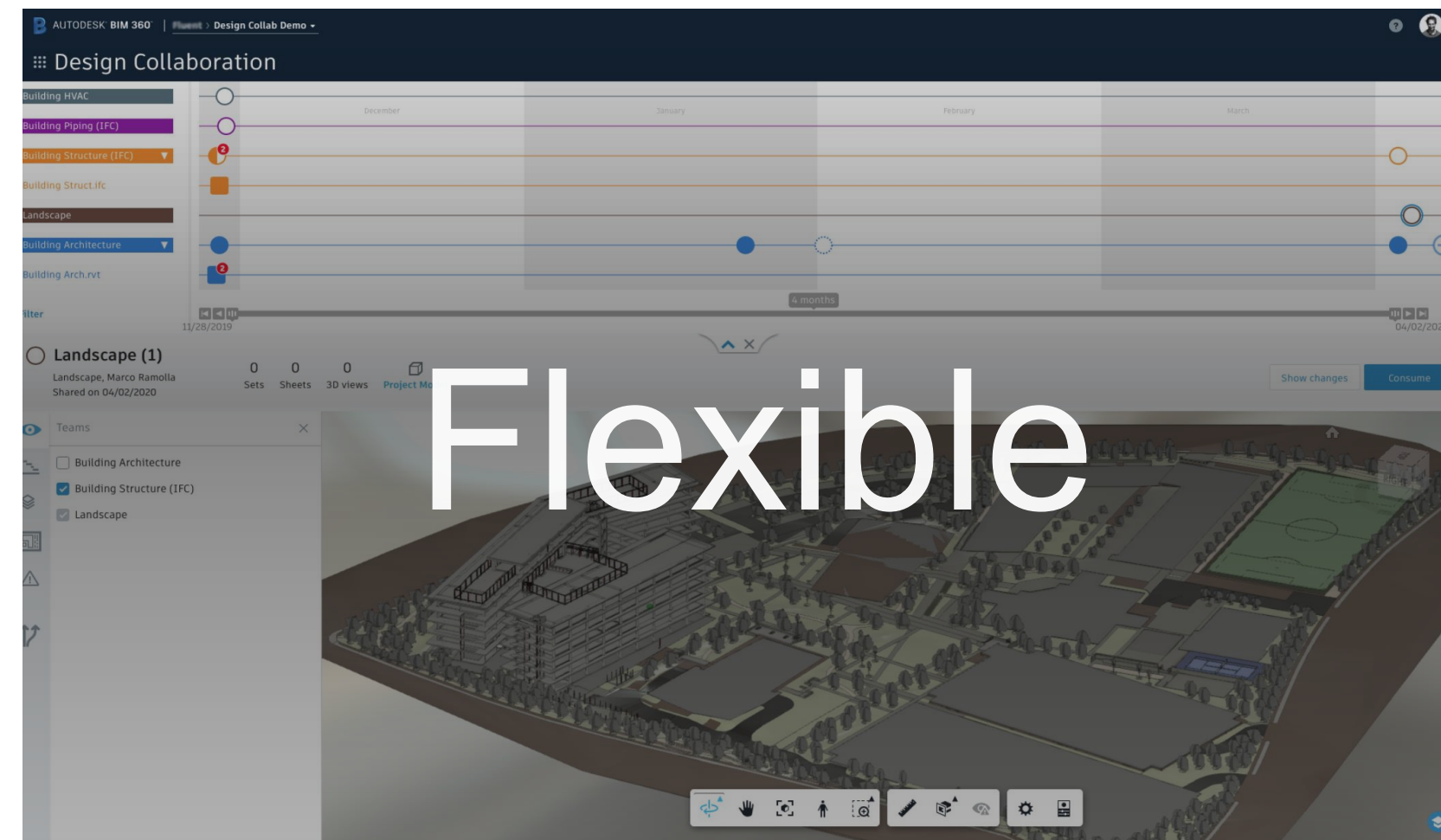
Reshape AEC project delivery

Enable data-driven collaboration across all teams and projects



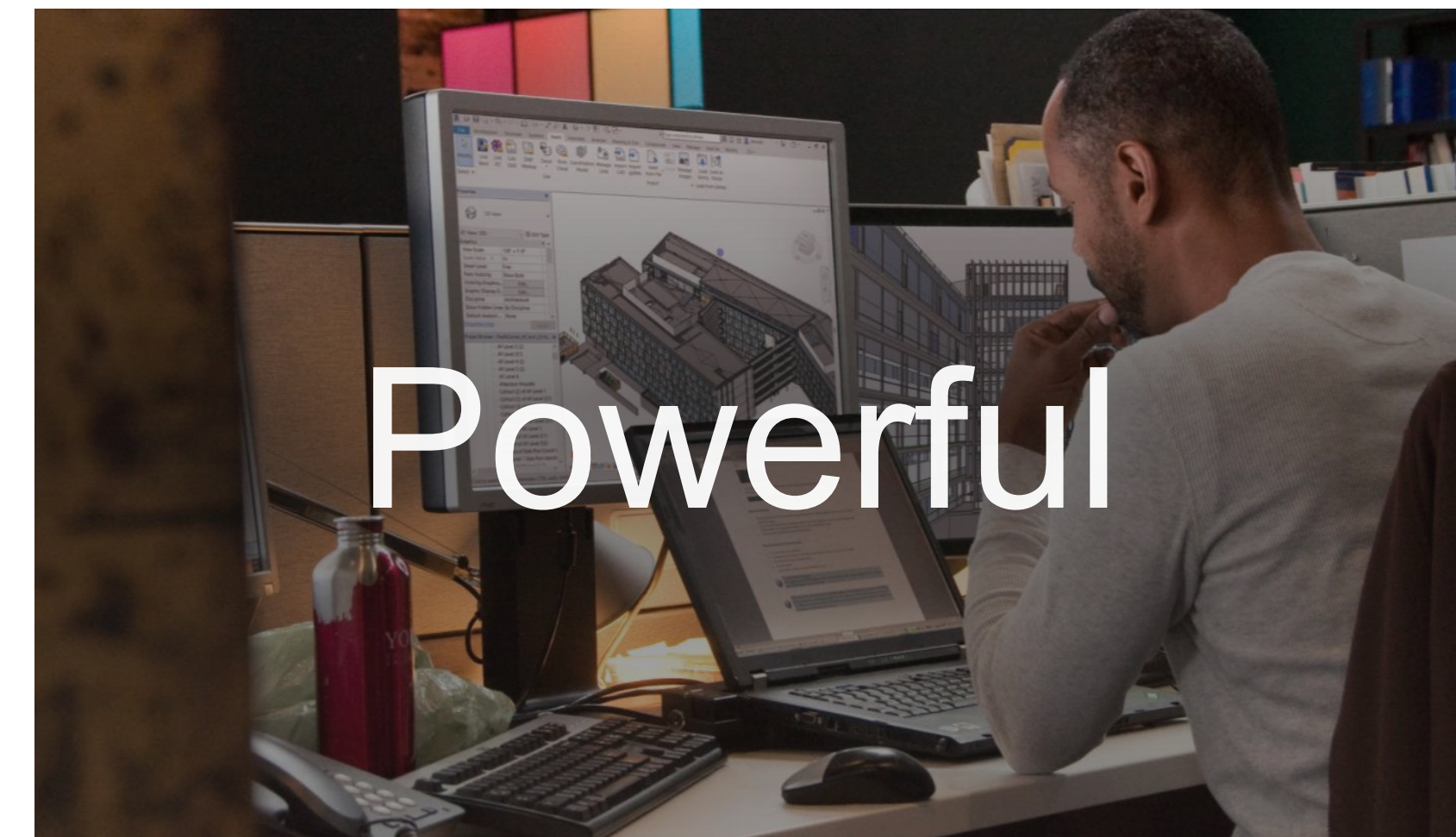
Connected

Connect teams, tools, and data to maximize efficiencies and avoid rework



Flexible

Work on horizontal and vertical projects, collaborating in design tools anytime, anywhere

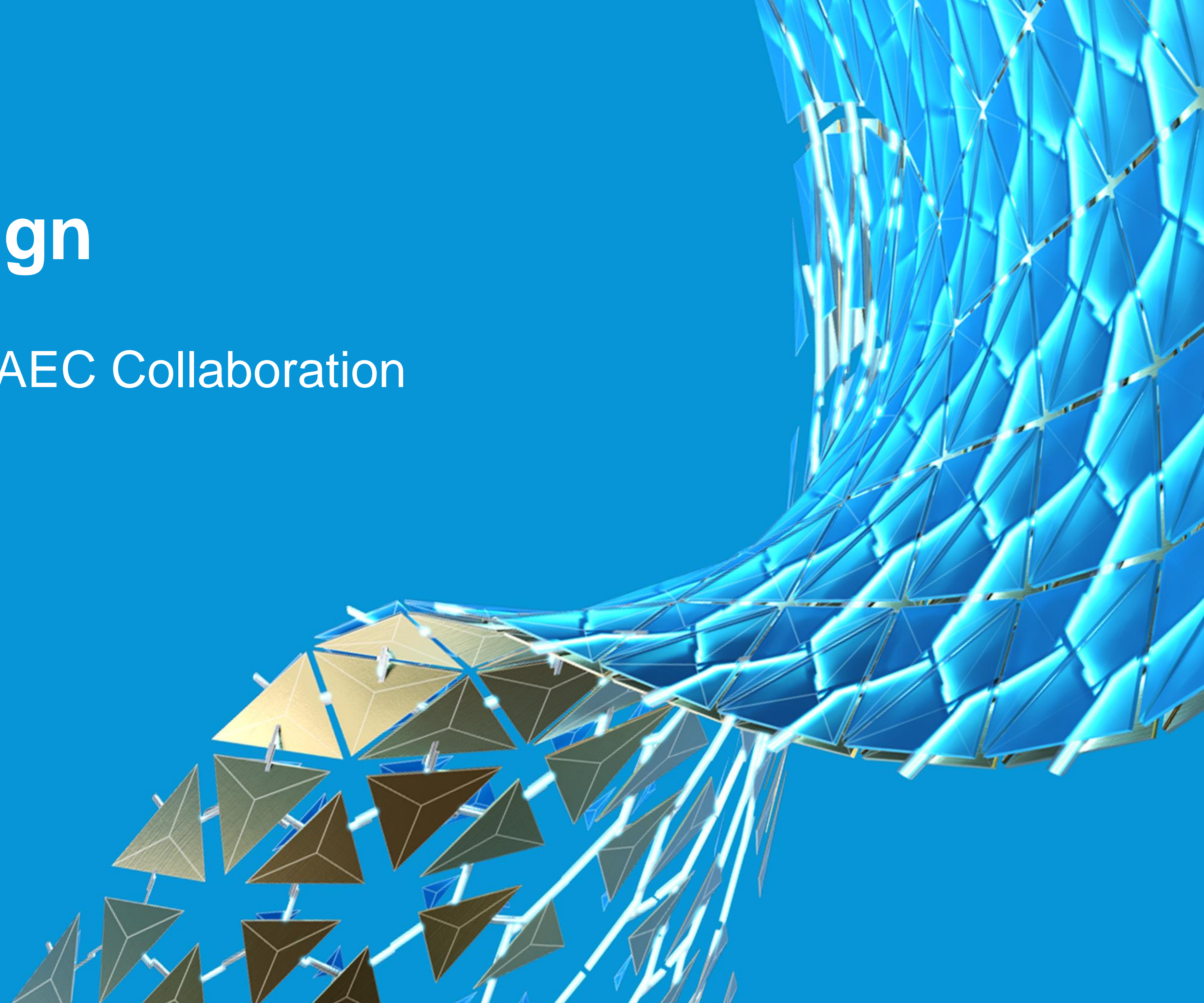


Powerful

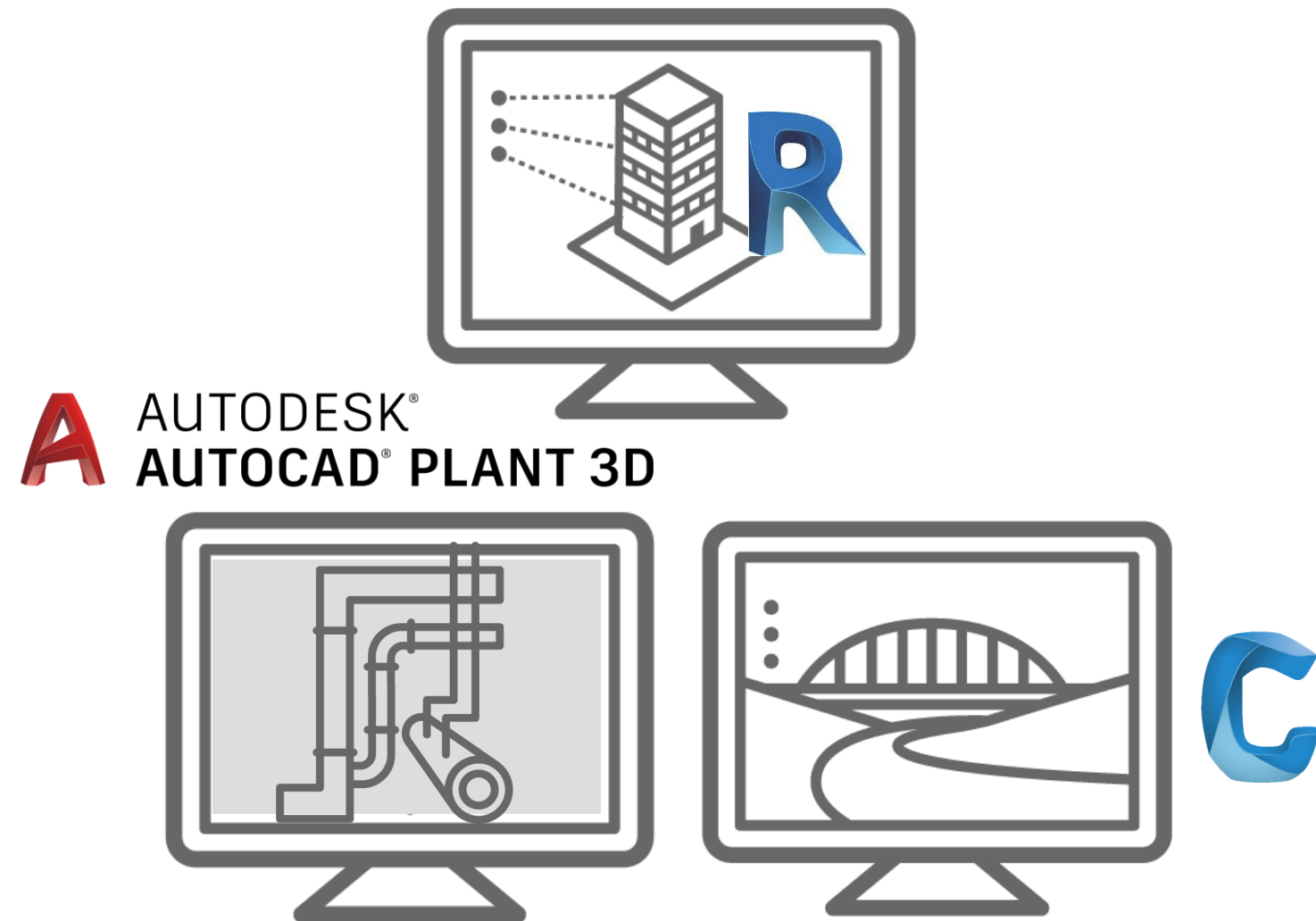
Secure, centralize, and analyze your data for powerful, actionable insights

BIM 360 Design

Anytime, Anywhere AEC Collaboration



What is BIM 360 Design?



Work anytime, anywhere in
Revit, Civil 3D & Plant 3D

Designers



Centrally manage your data in
one platform: **BIM 360**

Coordinators



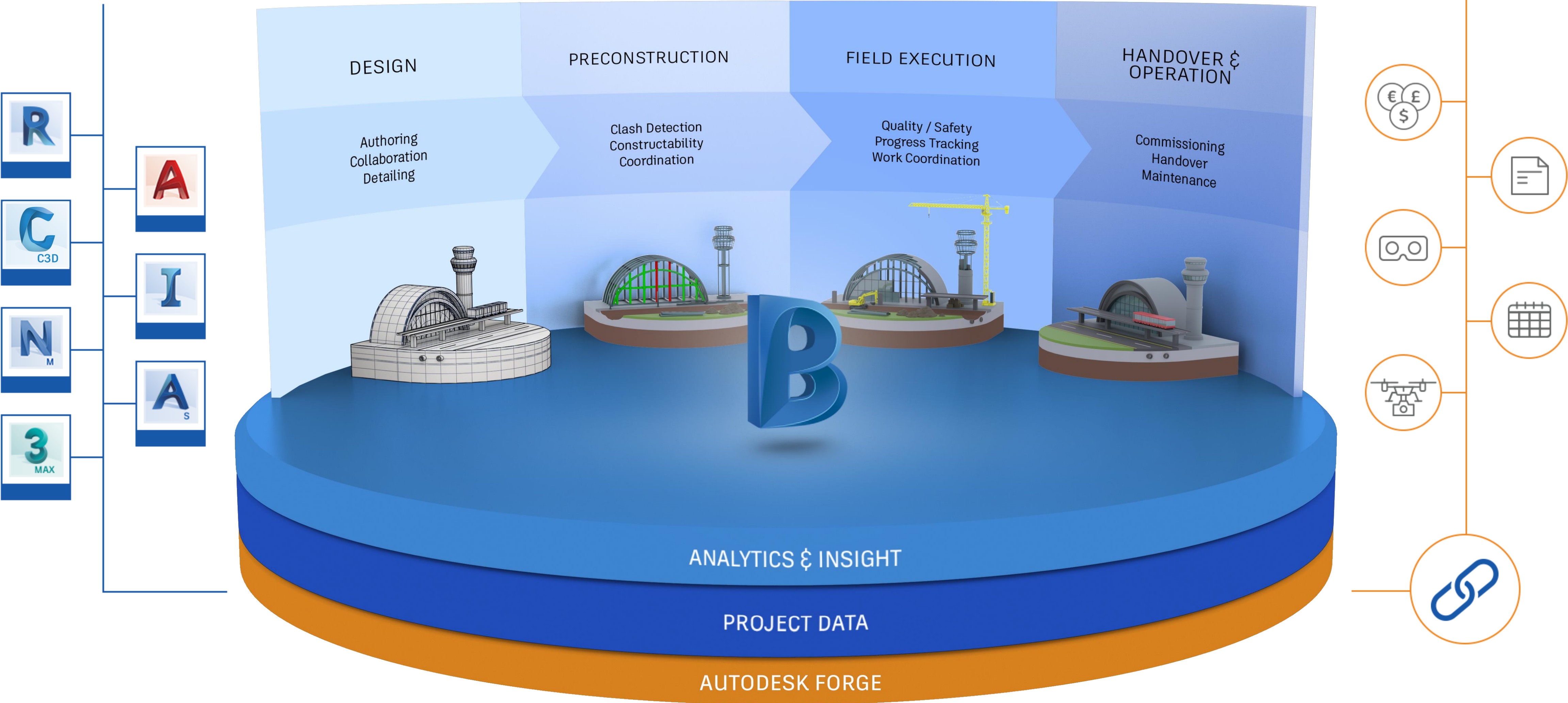
Communicate ongoing design progress
with **anyone on any device**

Decision Makers

BIM 360: A Connected Platform

 AUTODESK® ARCHITECTURE,
ENGINEERING & CONSTRUCTION
COLLECTION

3RD PARTY
APPLICATIONS



BIM 360 Design for Buildings

Document Management Module



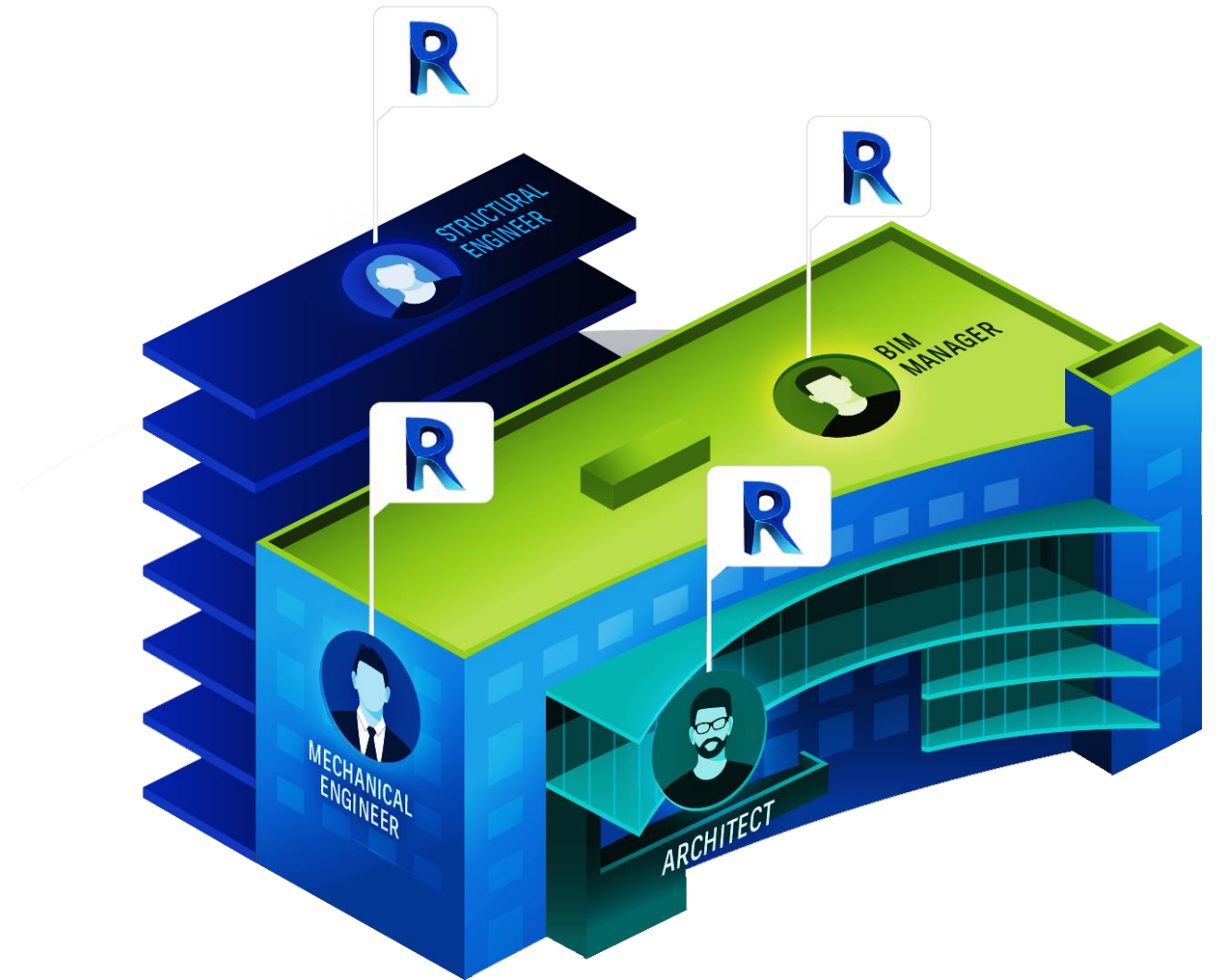
- Coordination folder
- Aggregated model viewing & comparison
- Markups, issues

Revit Cloud Worksharing



- Anytime, anywhere Revit collaboration
- Controlled cloud worksharing

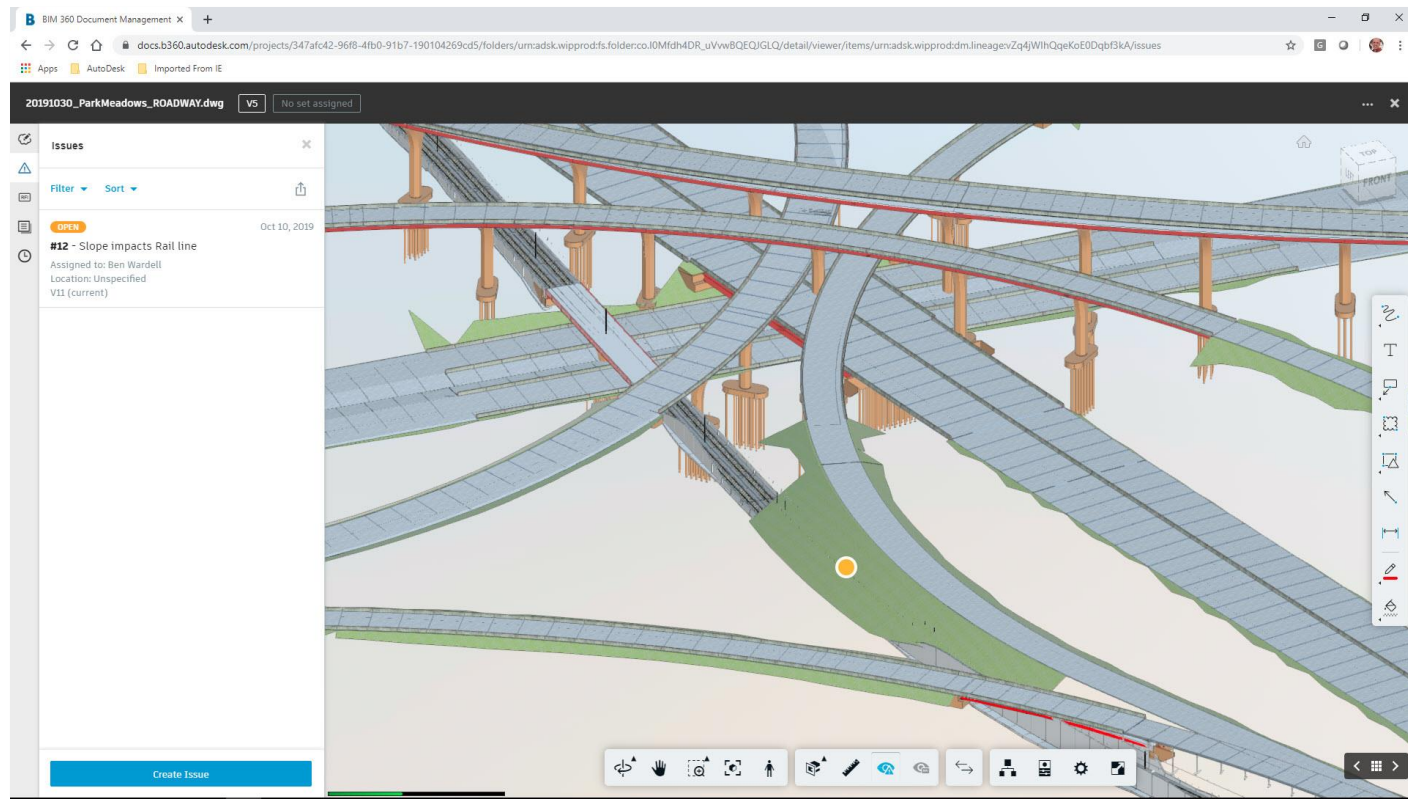
Design Collaboration Module



- Set publishing
- Package review and distribution
- Visual version comparison

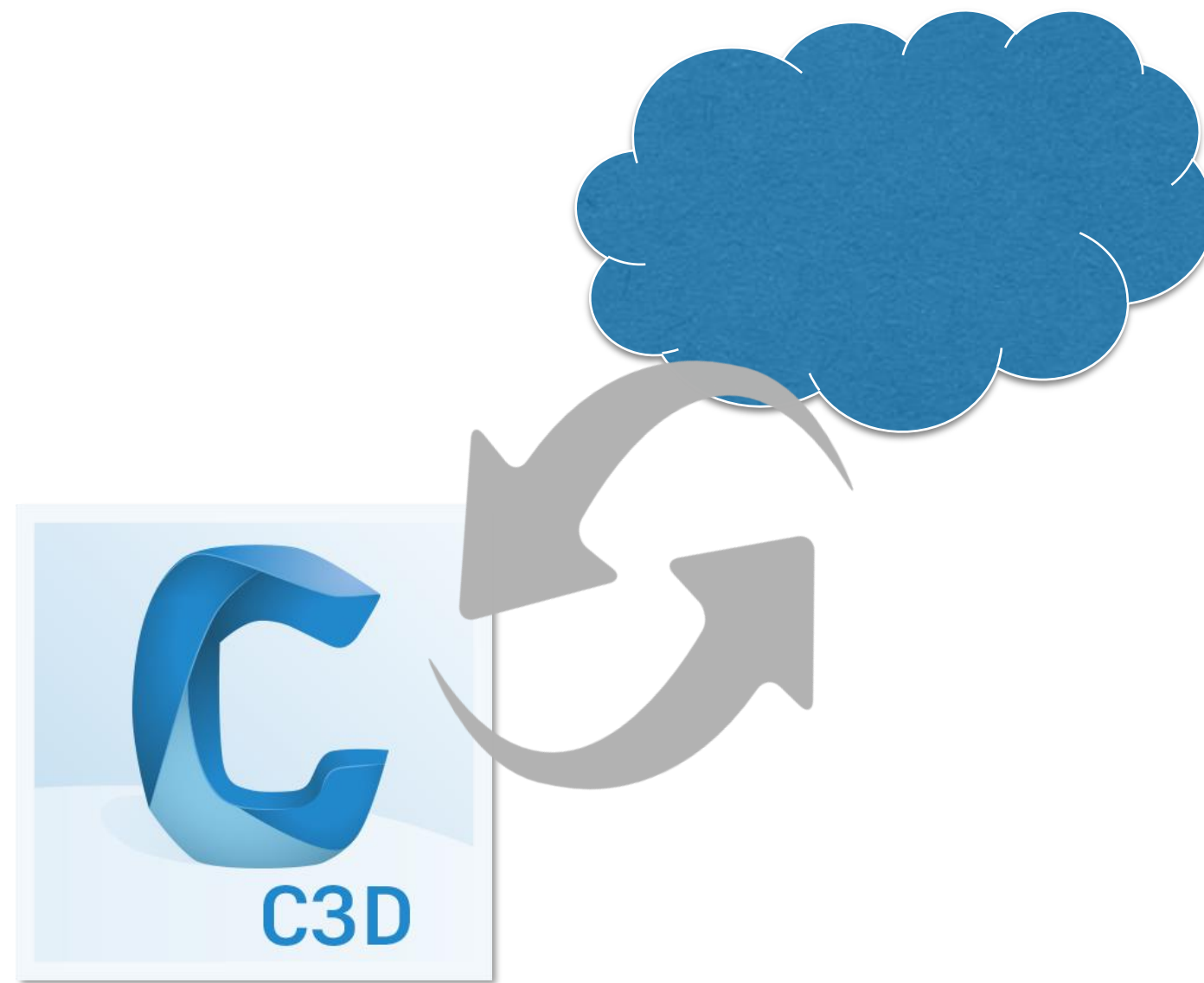
BIM 360 Design for Infrastructure

Document Management Module



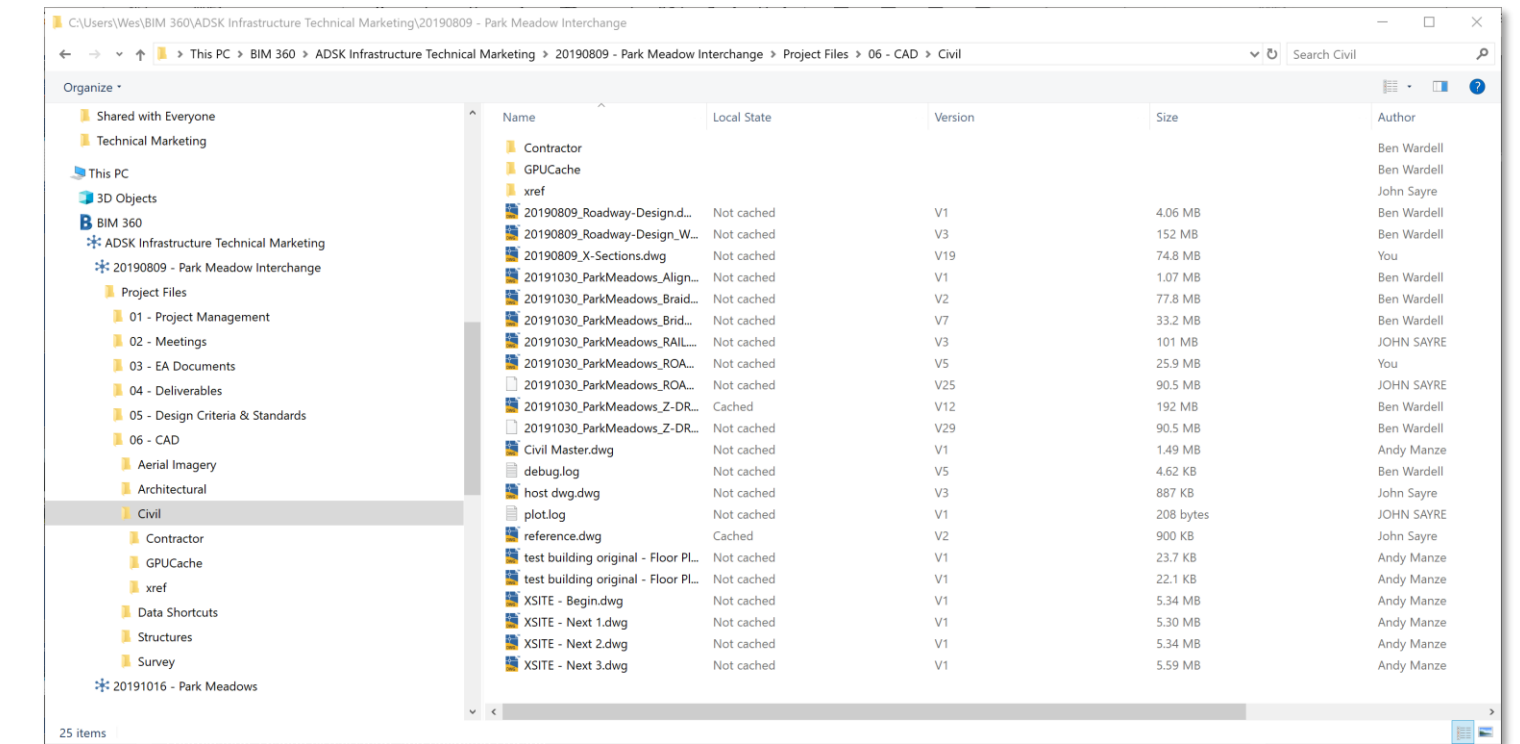
- Review submittals
- Visual version control
- Issue and markup creation

Collaboration for Civil 3D



- Cloud-managed projects
- Create and consume Data Shortcuts
- Automated file locking

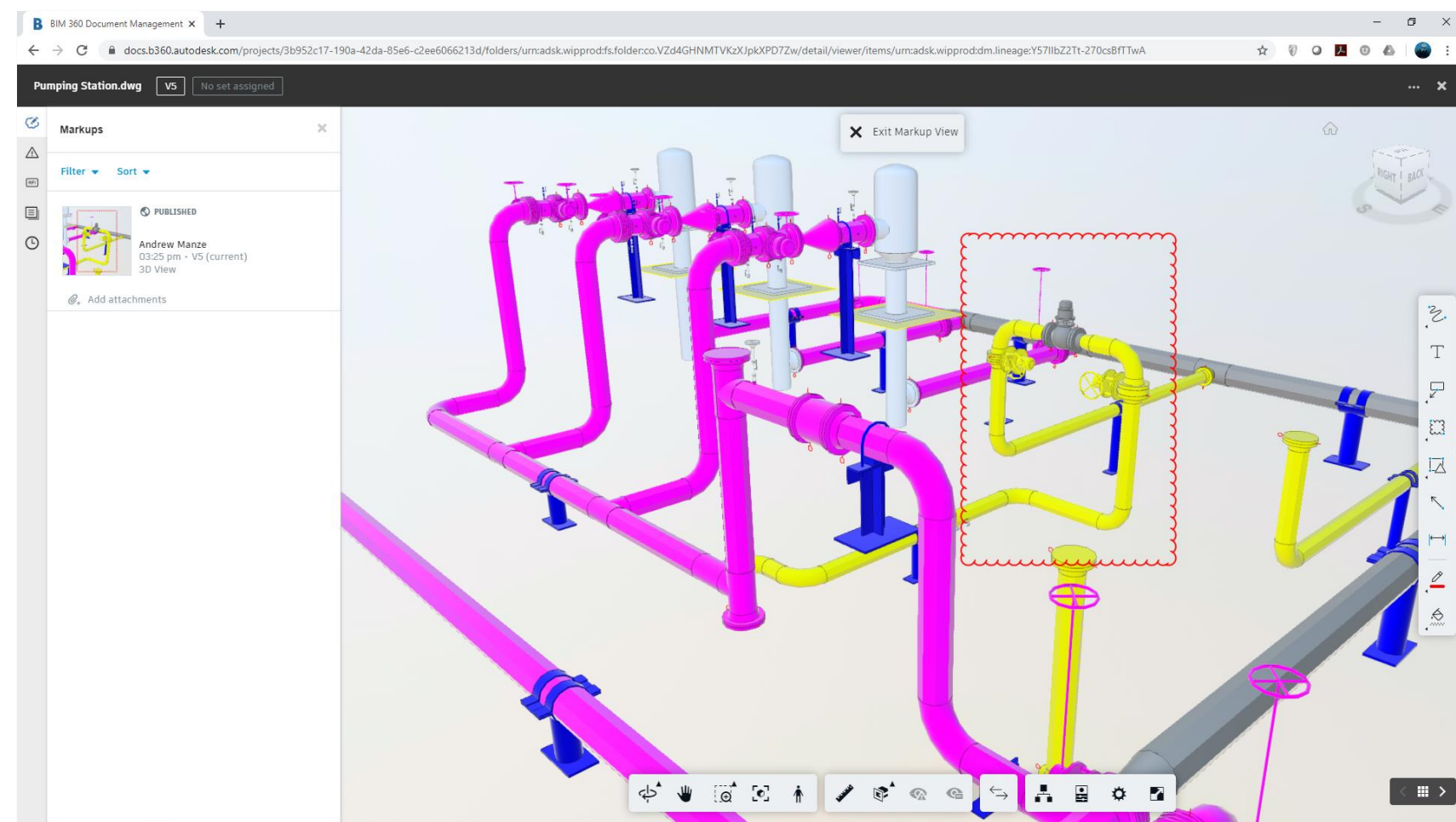
Desktop Connector



- BIM 360 desktop access
- Lock and unlock files
- View file status (version, author, etc.)

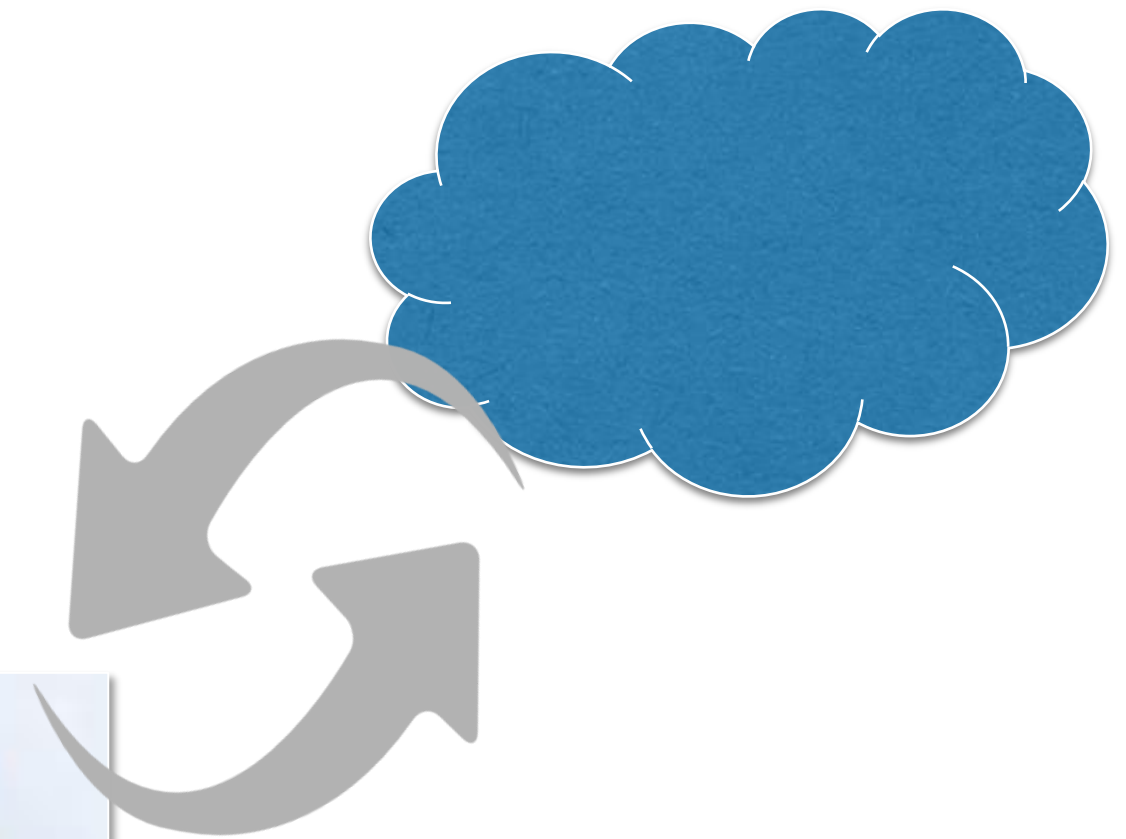
BIM 360 Design for Plant

Document Management Module



- Design Review
- Version Compare
- Issue and markup creation

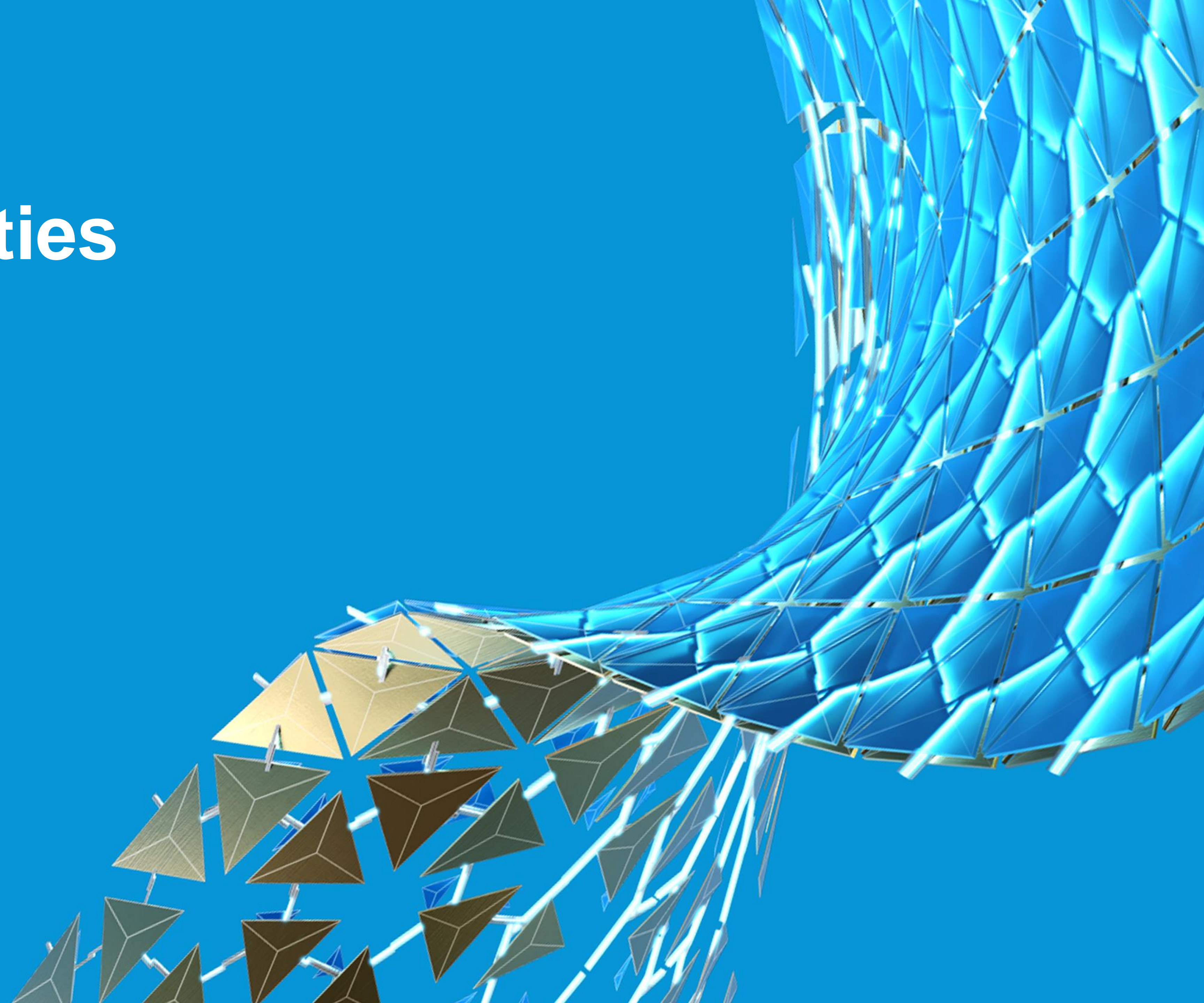
Collaboration for Plant 3D



- Project Sharing and Review
- Streamlined Approval Workflows
- Simplified Administration

Key Capabilities

BIM 360 Design





Collaboration



Communication

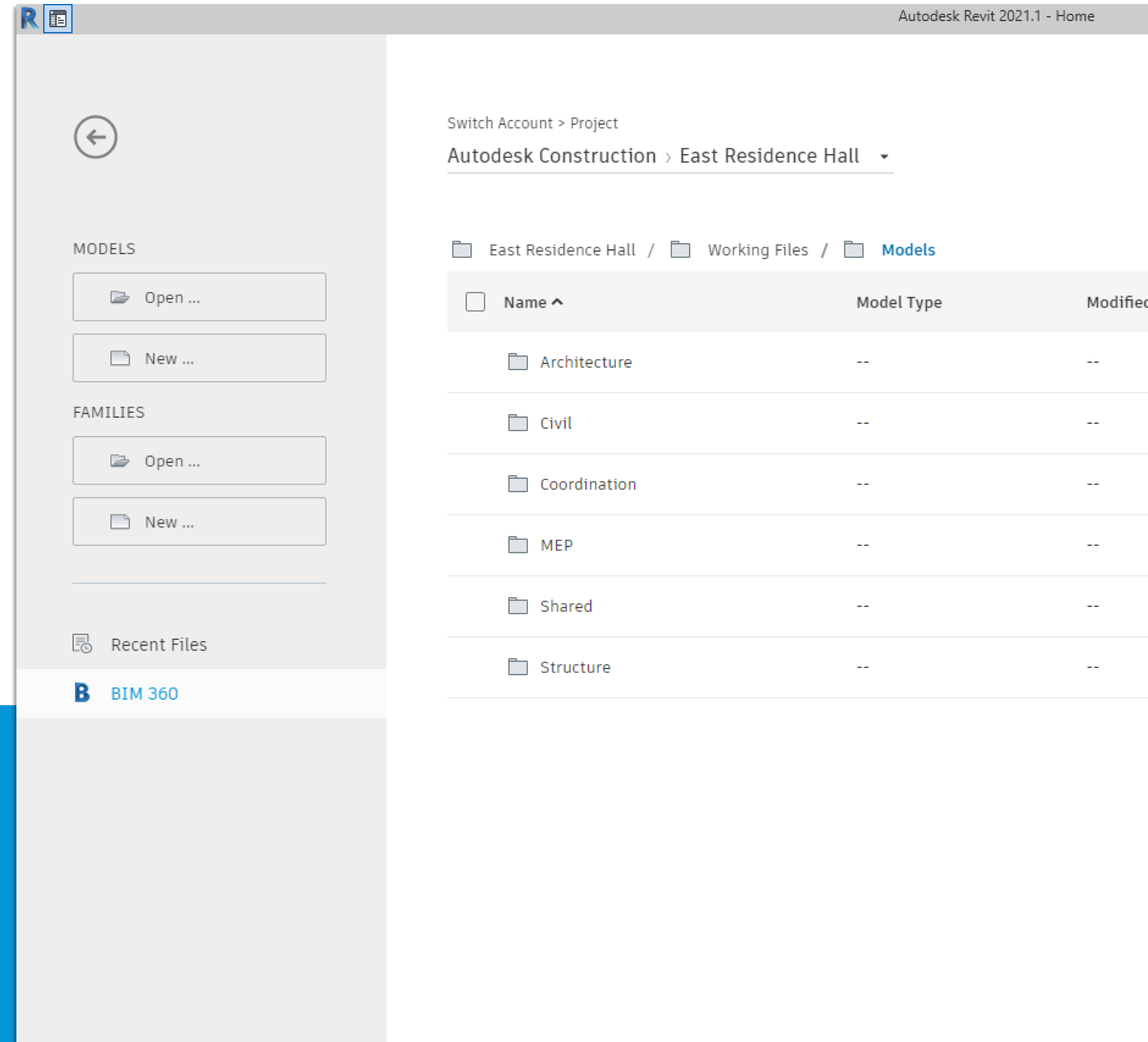


Security

Collaboration: Anywhere, Anytime, Anyone

- **Extend worksharing to virtually anywhere**
- **Enable easy and secure multi-firm concurrent authoring**

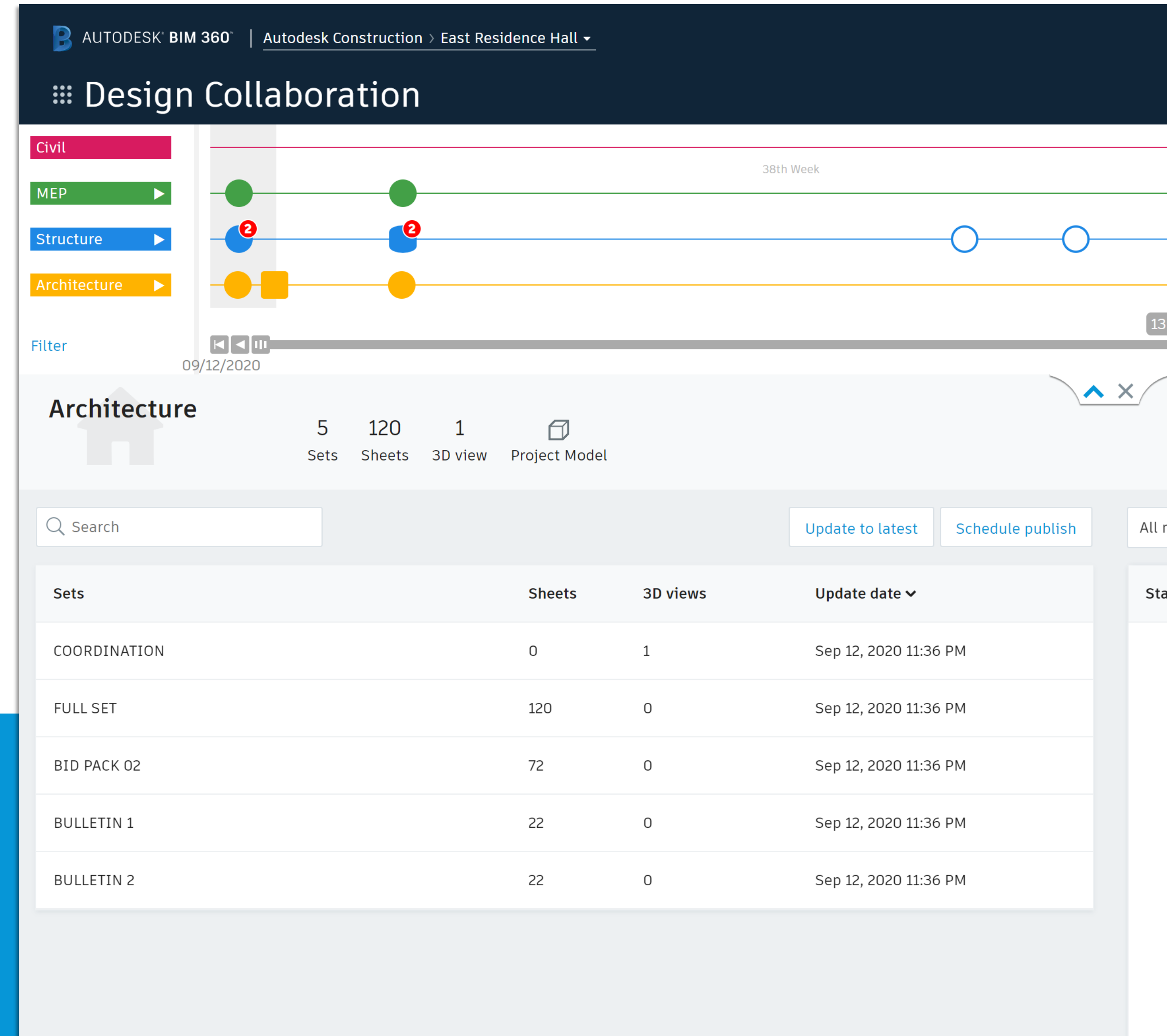
Connects project teams with centralized access to BIM project data in the cloud, with no need for costly IT setup



Communication: Managed Collaboration

- Deliverable coordination
- Milestone tracking
- Accountability
- 2D and 3D change visualization
- Revit and IFC (stay tuned for more!)

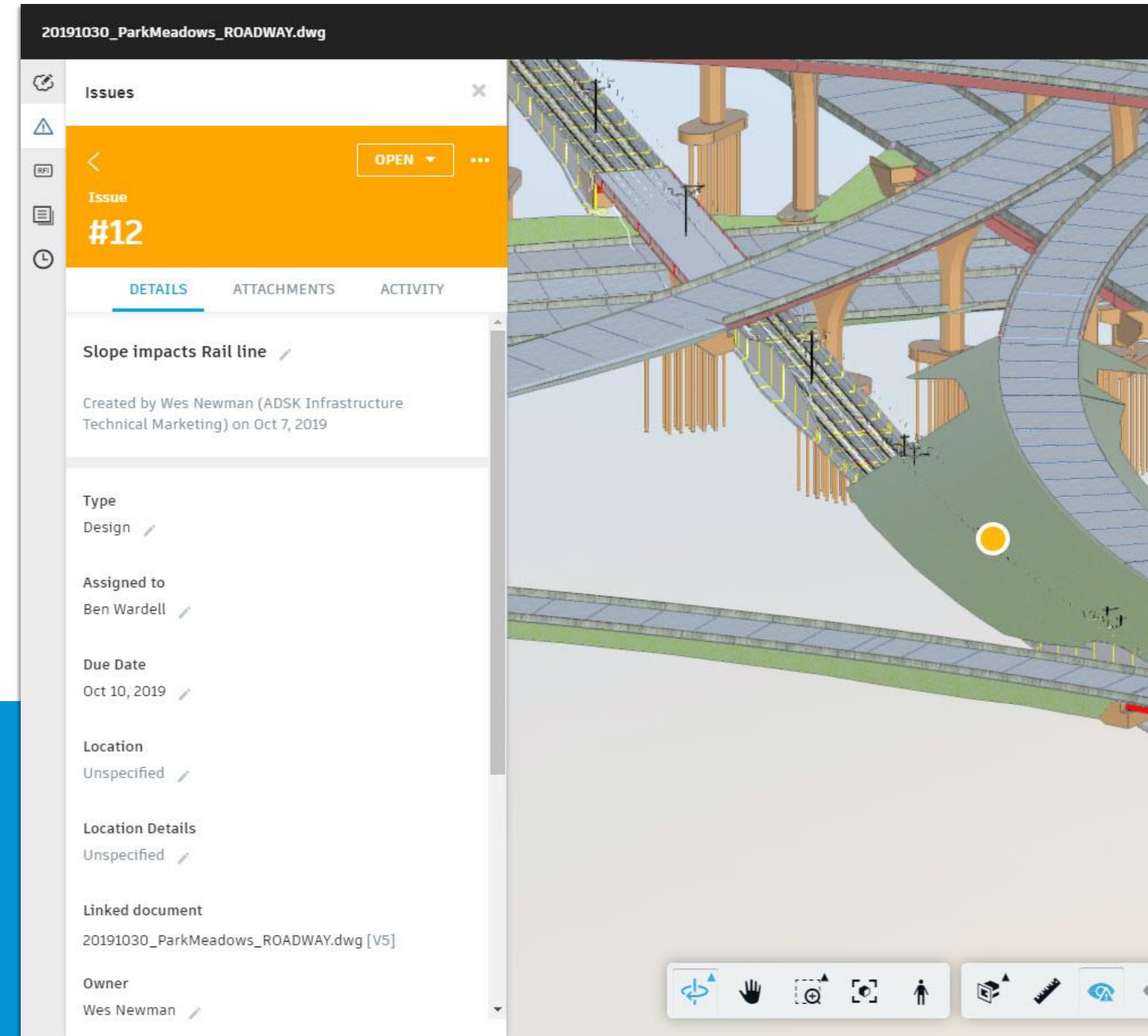
Track project activity, monitor changes, and manage collaboration between teams to best suit your project needs



Communication: Issues, Markups, and More

- Place, assign, and track issues anywhere
- Add private or shared markups and comments
- Create review workflows
- Send transmittals

Keep your team on the same page and ensure accountability with assignable, version-aware issues and markups together with document control



Security: Robust Access Controls

- **Manage account and project access for internal and external users**
- **Up to 6 permission levels configurable by user, role or company**

Control worksharing and design deliverable exchange with the assurance that the right information is in the right hands throughout your project


The screenshot shows a software interface with a modal dialog titled "Add Permissions". The background interface includes a header with "Upload Files", "Showing 3 items", and an "Add" button. Below the header is a table with columns "Description", "Version", and "Size". The dialog box contains the following elements:

- Add New ***: A text input field with the placeholder "Enter names, email addresses, roles, or companies".
- Permission Level ***: A dropdown menu with the text "Select a permission level".
- Permission Levels List**: A list of five permission levels, each with a progress bar indicator and a description:
 - View Only**: Can view documents and can add markups/issues, but cannot upload or download content.
 - View/Download**: Can view and download documents and can add markups/issues, but cannot upload content.
 - Upload Only**: Can upload content, but cannot view folder contents.
 - View/Download+Upload**: Can upload, download and view content, and add markups/issues.
 - View/Download+Upload+Edit**: Can review and publish content, as well as edit and delete.

Customer Stories & Adoption

BIM 360 Design






“Due to BIM coordination and multi-discipline collaboration, our project was delivered with **less than one percent rework**—on a typical job, we expect to have between eight to ten percent rework.”

Russ Dalton, BIM Director for the Americas
AECOM →

“What used to take us six weeks, now takes us 24 hours.”



“Autodesk’s launch of Collaboration for Civil 3D connects our horizontal infrastructure teams with other project stakeholders, allowing **real-time design collaboration** across all lines of service.

The ability to incorporate horizontal design with vertical design teams has made a monumental impact...

...on **making the right decisions** for our partners at vital moments during the project lifecycle.”

Stacey Morykin, Design Technology Manager, Pennoni →

“Thanks to productivity gains, we’ll be saving more than 4,000 euros a year for each employee that uses BIM 360 Design.

When you look at the number of employees using the software and projects we’re working on at any given time, **we could be saving hundreds of thousands of euros** from this implementation alone within the next few years. This is money that we will look to re-invest in new technologies.”

Thierry Monteyne, BIM Model Manager and CAD Support Engineer, VK →



“Using BIM 360 Design has increased our Revit and associated BIM productivity immensely.”

“We are seeing productivity increases of up to 25% on cloud-based projects due to load and syncing times alone.”

“...using BIM 360 Design gives us the certainty that our teams and clients are always aware of the latest versions and project developments.”

**Associate/BIM Manager Anthony Woodsford
at Corstorphine + Wright** 

“Collaboration in BIM 360 Design gave us a cost reduction of 90% and a time savings of 20%”

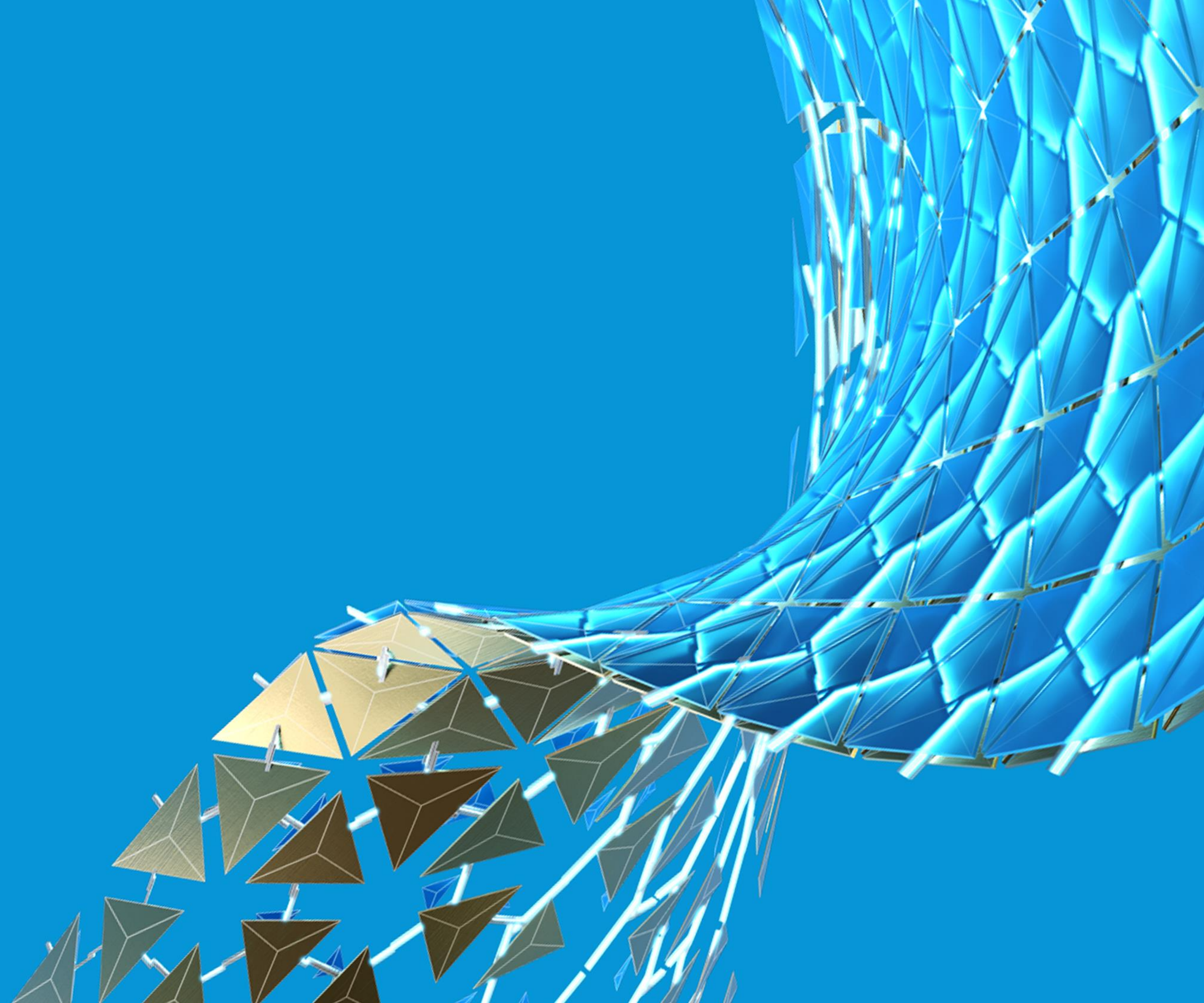
on the Brown University New Engineering Research Center project.

Paul McGilly, BuroHappold →



Resources

BIM 360 Design



Resources for Revit Collaboration

- **Helpful blog posts**
 - [Staying Connected with BIM 360 Design](#)
 - [Best practices for working remotely](#)
 - [Working remotely in Revit](#)
- **General Product Help, FAQs, & Resources**
 - [Getting Started Guide](#)
 - [Workflow Visualizer](#) – guide for account setup help
 - [Product FAQs](#)
 - [BYOS Policy](#)
 - [Learn-it-yourself courses](#)
 - [YouTube playlist with essential workflows](#)
 - [Advanced workflows in Design Collaboration module](#)
- **BIM 360 Security**
 - [Security Center](#)
 - [Security Whitepaper](#)
- **Customer stories, product releases, & news**
 - [Convergence blog](#) for customer stories and news
 - [BIM 360 release notes blog](#)
 - [Connect & Construct blog](#) (for construction articles)
- **Forums**
 - [BIM 360 Support Forum](#)
 - [BIM 360 Ideas Forum](#)
 - [BIM 360 API Forum](#)
 - [Revit Cloud Worksharing](#)

Resources for Civil 3D & Plant 3D Collaboration

- **Customer stories, product releases, & news**
 - [Infrastructure Reimagined blog](#)
 - [BIM 360 release notes blog](#)
 - [Connect & Construct blog](#) (for construction articles)
- **General Product Help, FAQs, & Resources**
 - [Getting Started Guide](#)
 - [Workflow Visualizer](#) – guide for account setup help
 - [Product FAQs](#)
 - [BYOS Policy](#)
 - [Learn-it-yourself courses](#)
- **BIM 360 Security**
 - [Security Center](#)
 - [Security Whitepaper](#)
- **Forums**
 - [BIM 360 Support Forum](#)
 - [BIM 360 Ideas Forum](#)
 - [BIM 360 API Forum](#)

Europe Data Center FAQs

- **Supported versions of authoring tools:**
 - Revit 2021+
 - Civil 3D 2020.2+
 - Plant 3D 2021+
- **Data cannot be migrated automatically between data centers**
 - This applies to account sites/tenants on the same data center as well
- **EBA customers**
 - Work with their account teams to set up a new tenant on the Europe data center
- **Contracts can only be assigned to one account site**
 - If a user wants 2 account sites, they need to have two (separate) Contract Managers, each with their own subscription
 - Existing customers can, for example, purchase 1 seat of BIM 360 Design to set up the tenant on the Europe data center, then invite everyone from the other tenant under [BYOS](#)
- **Entitlements on a subscription apply to projects on both data centers**



Autodesk and the Autodesk logo are registered trademarks or trademarks of Autodesk, Inc., and/or its subsidiaries and/or affiliates in the USA and/or other countries. All other brand names, product names, or trademarks belong to their respective holders. Autodesk reserves the right to alter product and services offerings, and specifications and pricing at any time without notice, and is not responsible for typographical or graphical errors that may appear in this document.

© 2020 Autodesk. All rights reserved.

