



Tracking your issues using Power BI

Brian Myers

Sr Digital Delivery Lead | Jacobs



About the speaker

Brian Myers

Brian has been involved in teaching, supporting, and guiding the process of BIM for the last 14 years and runs the largest BIM and Revit group on LinkedIn, Revit Users, with well over 150,000 members. Lately he has been spending his “free time” pushing data between applications to better understand the flow of data between software environments.

What are Project Issues?

A **project issue** is a problem that has been encountered in executing **project** activities. This problem impairs a **project's** ability to successfully complete.

Autodesk University + Power BI

Power BI can take in and display a wide range of data and it's up to you to determine what you want to communicate! Use the graphics on the left to find your rooms; the chart to see the clash totals; and the tabs to see each floor and clash total per trade.

Room Finder

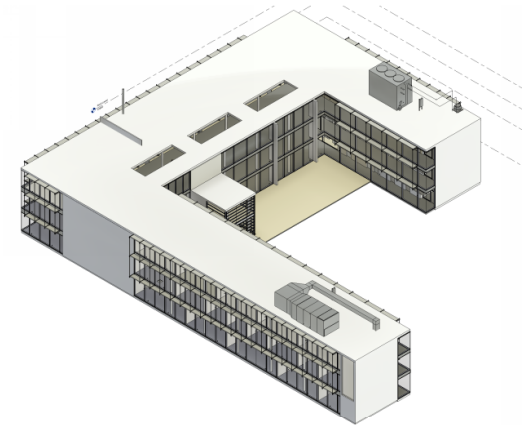
Level

☒ Level 1

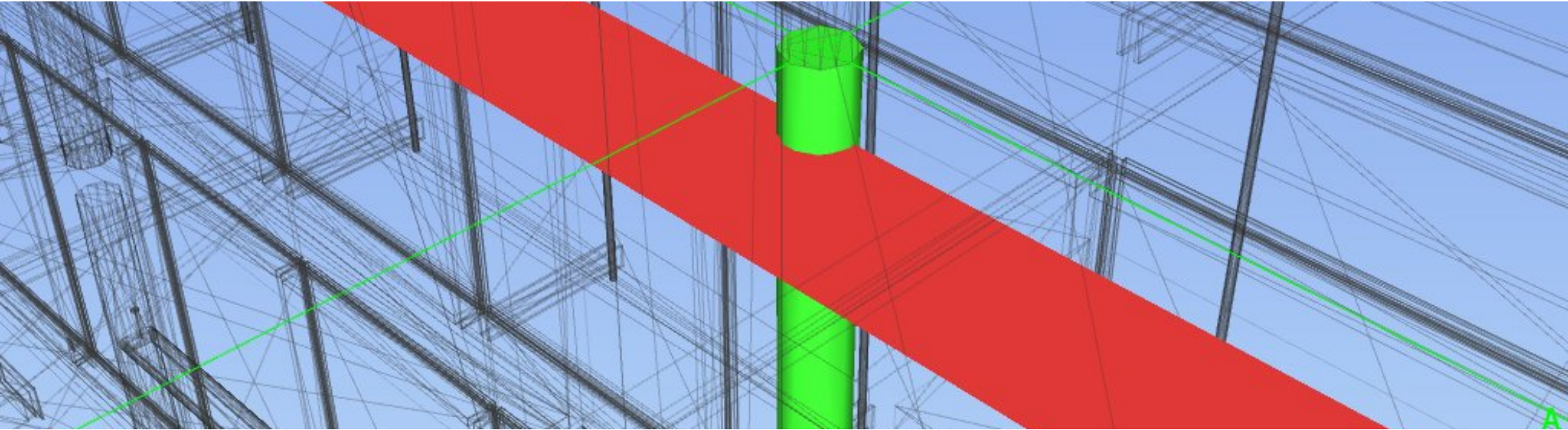
☐ Level 2

☐ Level 3

Rooms and Levels		
Number	Name	Level
21	Archive	Level 1
50	Cafeteria	Level 1
2	CH/PH I	Level 1
1	CH/PH Stock	Level 1
26	Cleaning	Level 1
27	Cleaning	Level 1
49a	Corridor	Level 1
49b	Corridor	Level 1
49c	Corridor	Level 1
49d	Corridor	Level 1
6	Leader	Level 1
8	Leader	Level 1
20	MZR	Level 1
113	Power Riser	Level 1
92	Stair	Level 1
93	Stair	Level 1
94	Stair	Level 1
18	Stock	Level 1
28	Technology	Level 1
25	Washing Room	Level 1
30	Washing Room	Level 1
23	WC	Level 1
10	WC D	Level 1
9	WC H	Level 1
51	WF	Level 1
4	Workshop	Level 1
14	Workshop I	Level 1
31	Workshop II	Level 1
16	Workshop III	Level 1
17	Workshop IV	Level 1

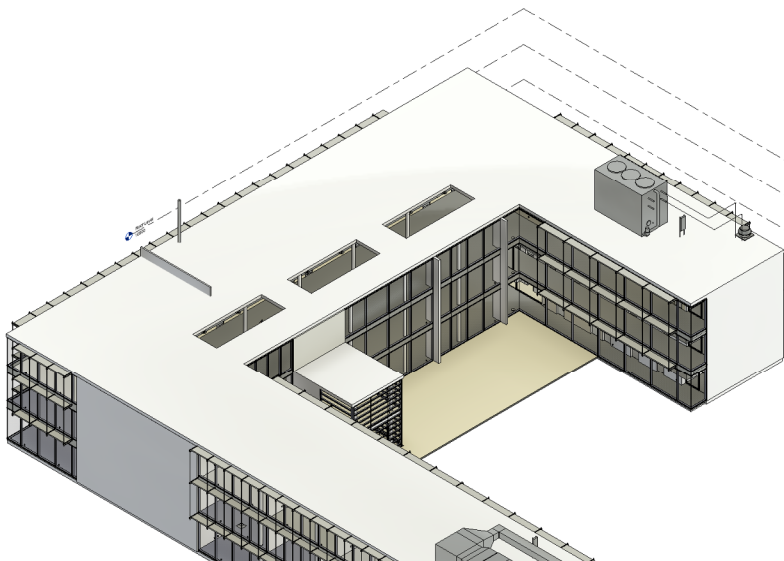


Project Clash Totals	
total	name3
17	Mech vs Plumbing
4	Mech vs Struct
2	Lighting vs Struct
2	Mech vs Lighting
2	Plumbing vs Lighting
0	Elec vs Fire Protection
0	Elec vs Lighting
0	Elec vs Plumbing
0	Elec vs Struct
0	FP vs Struct
0	Lighting vs FP
0	Mech vs Electrical
0	Mech vs FP
0	Plumbing vs FP
0	Plumbing vs Struct



Enhanced collaboration can resolve project issues.

Navisworks creates reports and displays viewpoints that makes understanding difficult design issues easier to do and communicate. But can it also produce data that can be used by others “downstream”?



Information is more than just Revit... But Revit can be an important piece of the information exchange process.



Can Excel be part of the BIM or VDC process?



Autodesk and the Autodesk logo are registered trademarks or trademarks of Autodesk, Inc., and/or its subsidiaries and/or affiliates in the USA and/or other countries. All other brand names, product names, or trademarks belong to their respective holders. Autodesk reserves the right to alter product and services offerings, and specifications and pricing at any time without notice, and is not responsible for typographical or graphical errors that may appear in this document.

© 2020 Autodesk. All rights reserved.

