

Waking the Giant – Implementing New Technology in a Century Old Design Firm

David Butts

Engineering Technology Manager



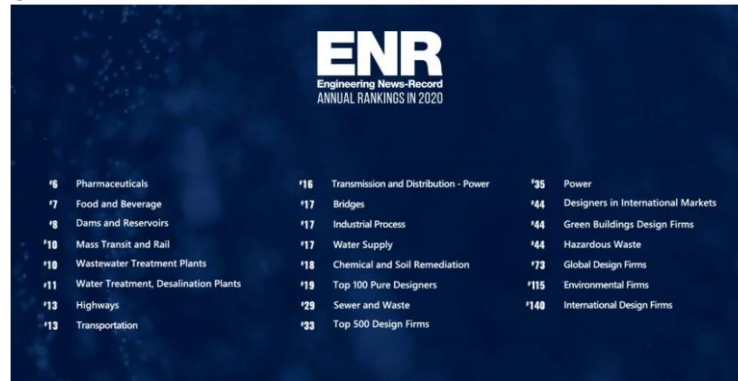
Who we are...



Gannett Fleming

*Excellence Delivered **As Promised***

- Founded in 1915 by Farley Gannett – over 60 offices and 2500 employees
- Farley's father, Henry Gannett, was a founder of National Geographic, and considered the “father of the cartographic map”; Gannett Peak (13,810') is named for Henry
- Began using computing technology in 1955
- Participate in several Autodesk Leadership Councils
- ENR #33 Overall in Design Firms





On Today's Panel...

Our Engineering Technology Team



Stacey Morykin –
Horizontal Design –
Roadway - 2020



Tony Conchado –
Vertical Design –
Facilities - 2007



David Butts – Vertical
Design – Earth
Sciences - 2010

On Today's Panel...

Our Design Team



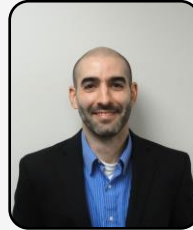
Tony Elberti,
PE
2009
Senior
Project
Engineer/
Project
Manager
Water



Bill Curran,
PE
2013
Mechanical
Manager /
Principal
Project
Manager
Facilities



Elik Livay, PE
2003
Vice
President
Water



Dan Reinke
PE
2018
Roadway BIM
Program
Manager /
Senior Project
Engineer
Roadway



Lars
Augustin, PE
1995
Vice
President
Water

**Building Business Culture
that is Receptive to Changes
in Technology and
Workflows**

How a Pandemic Altered Traditional Workspaces

PEW Research Center Studies from December 9, 2020



70%

Workers

State their job can be done from home are teleworking all/most of the time



20%

Workers

Worked from home prior to pandemic



54%

Workers

Would want to continue to work from home after pandemic



87%

Technology

Having the technology and equipment as very/somewhat easy to obtain and use

Source: PEW Research, <https://www.pewresearch.org/social-trends/2020/12/09/how-the-coronavirus-outbreak-has-and-hasnt-changed-the-way-americans-work/>

Discussion Points

Building a business culture that's receptive to changes in technology and workflows

What changed for us...

- Moving to cloud-based projects and resources – Autodesk Docs, Sharepoint
- Change to enterprise licensing opened access to tools not considered in the past
- Greater dependency on online training and support
- Building the champions for the firm

How do you personally embrace change?

How do you engage colleagues to help them make changes?

What are the business goals in regard to change?



Updating Training Deliverables and Methods in Today's Remote Environment

Discussion Points

Updating your training deliverables and methods in today's remote environment

How training has changed?

- Classroom training is greatly reduced
- More 1:1 Mentoring
- Online training program incorporates new key features
 - Learning paths with assigned courses and reference materials
 - Workflows that integrate design\PIM\BIM\CAD standards
 - Assessment tools to measure success
- Team groups and channels promote conversation and shared experiences

How do we promote change and get employees engaged/invested in their training?



Reimagining Traditional Design Roles and Responsibilities in the Workplace

Discussion Points

Modify and improve the traditional design roles and responsibilities in the workplace

- End of the Draftsperson Era
- Specialized Roles for Technology
- Business Analytics
- Computational Design
- PIM/BIM Management
- Platform Management

Where do the tools fit?

Where does the workflow change?

How does it impact the client/deliverable?



Changes in Client Deliverables for Mutual Benefit

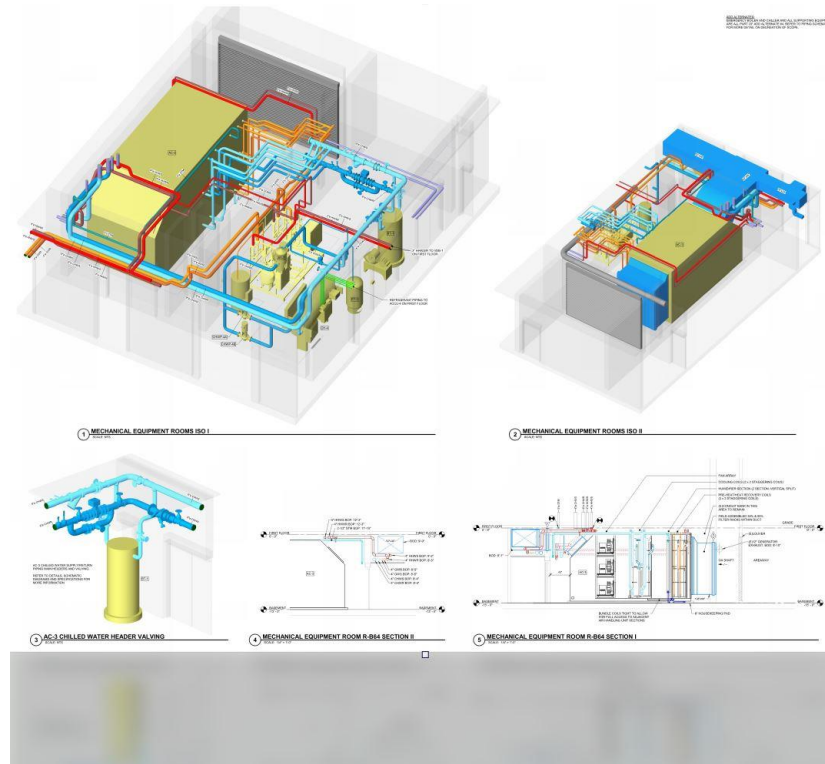
Discussion Points

Address the changes in deliverables to clients for mutual benefit

How does the client benefit from the changes in our workflows and tools?

How is the deliverable being altered by the technology?

How important is the integration of data through the lifecycle of the project?



Interested in Learning More?

Contact us for more information

David Butts – dbutts@gfnet.com

Stacey Morykin – smorykin@gfnet.com

Tony Conchado – aconchado@gfnet.com

Gannett Fleming Home Office:

207 Senate Avenue

Camp Hill, PA 17011-2316

PH: 800-233-1055

The background of the slide features four abstract, dark gray geometric shapes in the corners, resembling stylized computer monitors or architectural elements. These shapes are positioned in the top-left, top-right, bottom-left, and bottom-right corners, framing the central text.

AUTODESK UNIVERSITY

Autodesk and the Autodesk logo are registered trademarks or trademarks of Autodesk, Inc., and/or its subsidiaries and/or affiliates in the USA and/or other countries. All other brand names, product names, or trademarks belong to their respective holders. Autodesk reserves the right to alter product offerings, specifications and pricing at any time without notice, and is not responsible for typographical or graphical errors that may appear in this document.

© 2021 Autodesk. All rights reserved.