

# Acquire and Visually Present GIS Data Like a Pro in Infraworks (and Civil 3D!) with Autodesk Connector for ArcGIS

Shawn Cox – MG.aec Technology Partners

Design Technology Specialist / Civil and Infrastructure







# About the speaker

**Shawn Cox – MG.aec Technology Partners**

Design Technology Specialist - Civil

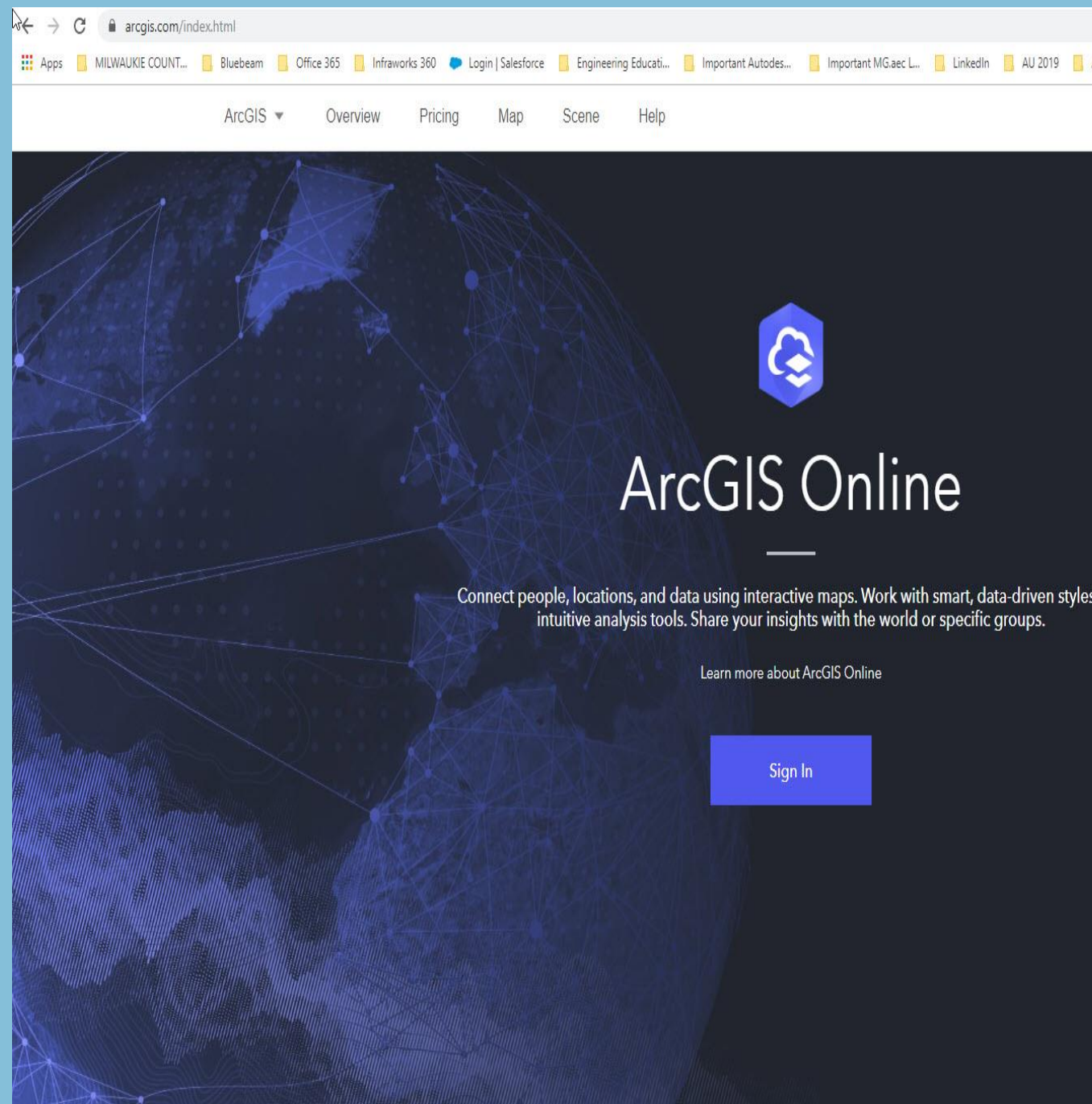
19 years professional use of Autodesk products

Currently specializing in content creation for civil firms,  
onsite mentoring, training, support

From Washington State – the sunny side

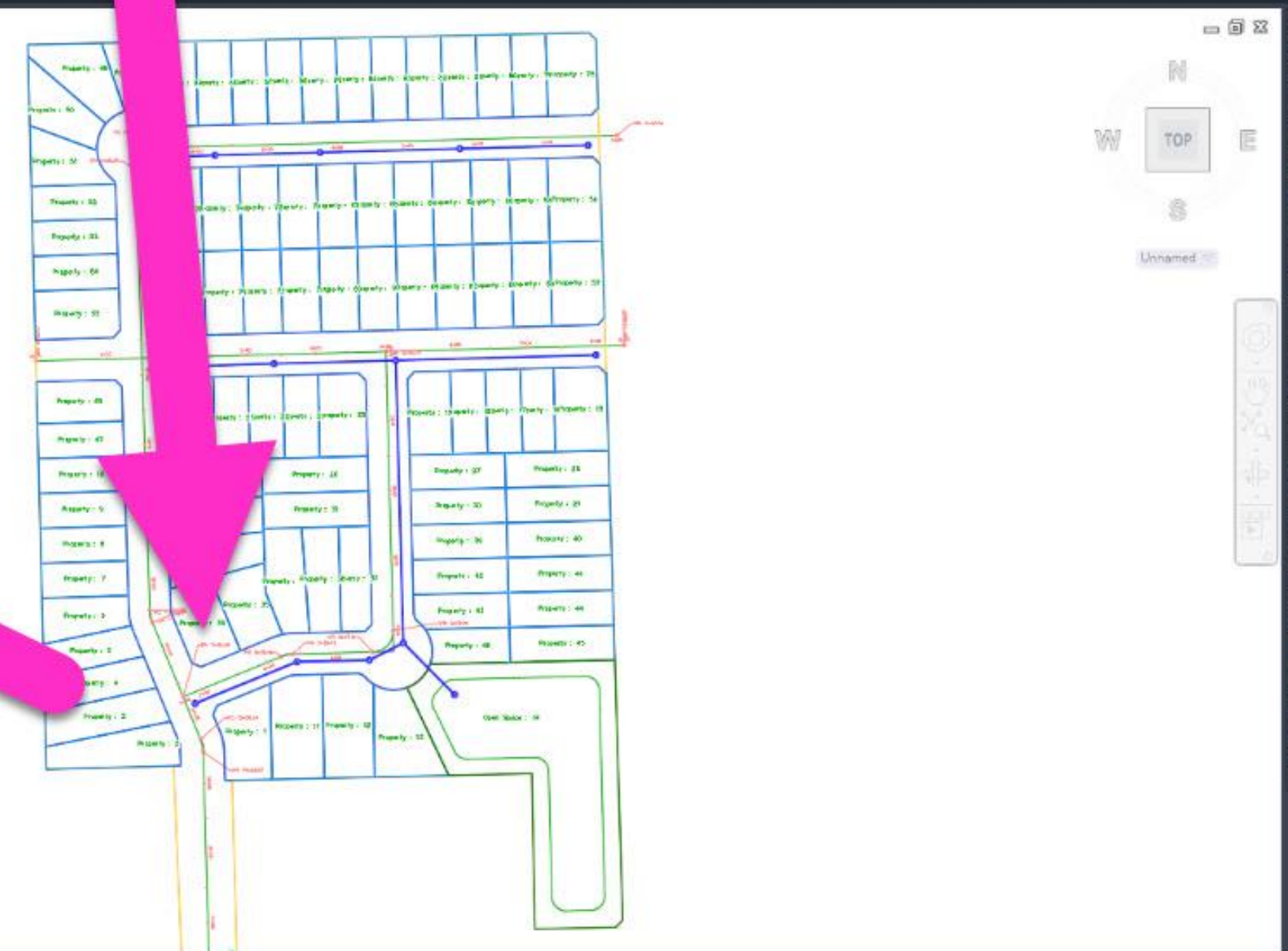
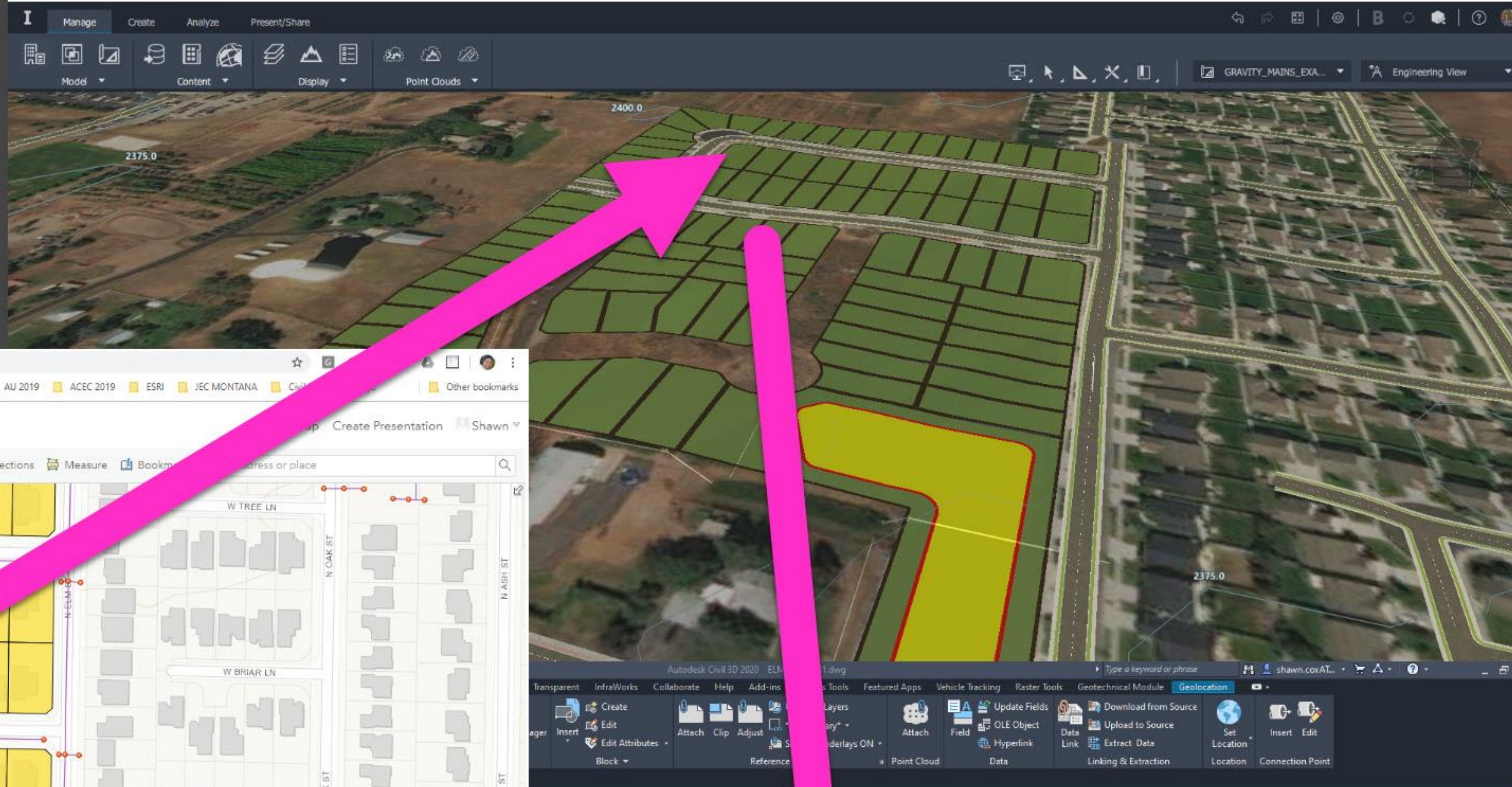
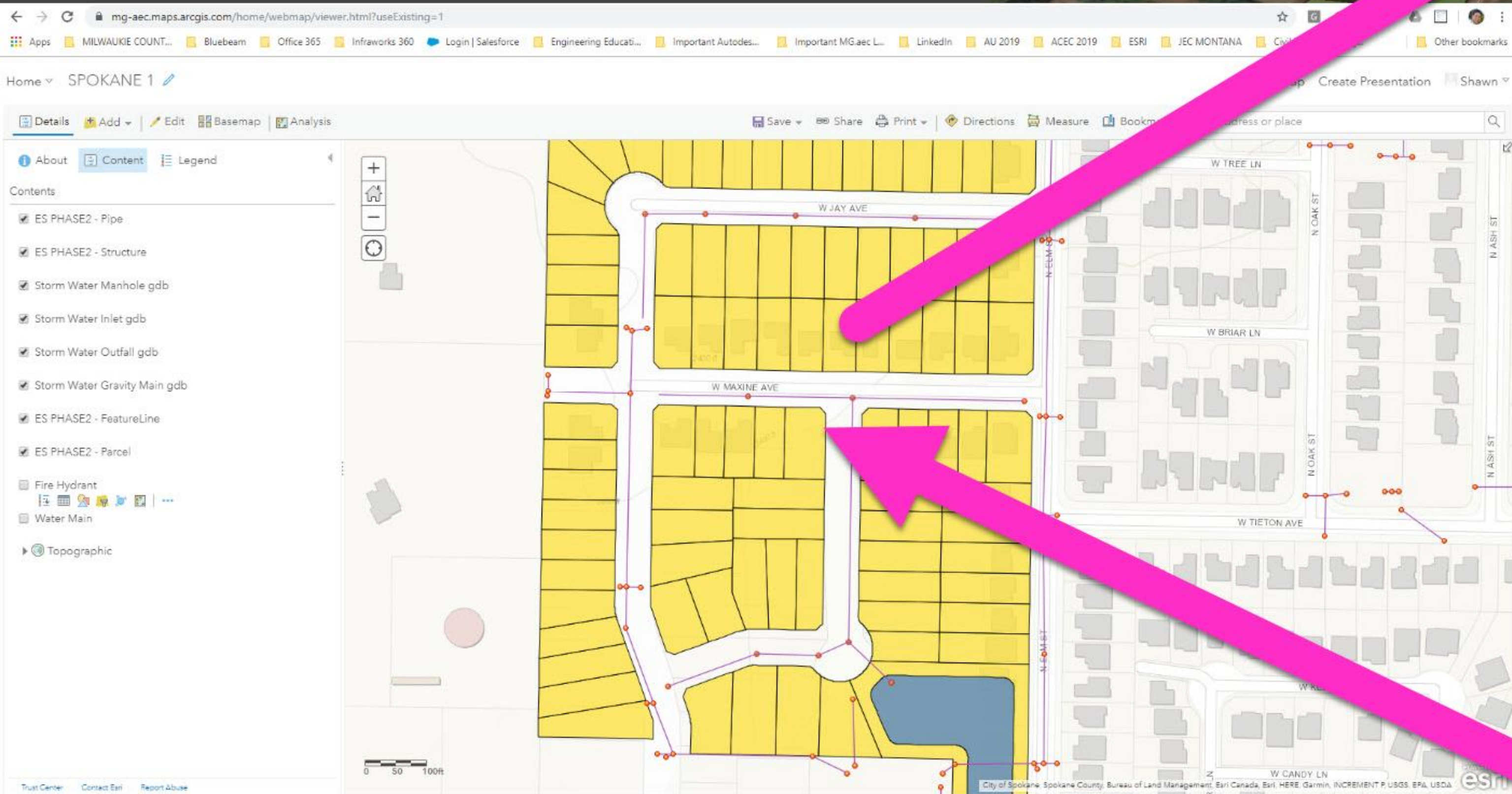


# Autodesk & ESRI Together





# Synergy



Your imagination is your only limitation.

-UNKNOWN



# The Session Topics (Have Evolved)

The original ones were:

- **BETTER UNDERSTAND POWERFUL NEW WAYS TO CREATE CONNECTIONS TO GIS DATA**

Yes, I will be showing you where the buttons are in the Autodesk products.

- **INTERNALIZE INNOVATIVE FUNCTIONALITY FOR CONSUMING AND PRESENTING GIS DATA EASILY**

Yes, I will be explaining how to get the data you want into your models to meet your context and design goals.

- **ENHANCE AND STREAMLINE EXISTING TECHNIQUES AND WORKFLOWS IN INFRAWORKS & C3D**

Yes, I'll be showing you simple things you can do when configuring and theming ArcGIS data.

- **CONSIDER NEW USES FOR GIS DATA IN YOUR PROJECTS, MODELS, AND DRAWINGS**

And yes, I hope the examples shared will help expand your ideas of what is possible.

BUT...

# The Overarching Learning Objective Is:

- **TO UNDERSTAND WHAT GOES INTO GETTING THE RIGHT DATA TO YOU, THE ENGINEER, THE DESIGNER, OR THE STAKEHOLDER**

This will be easier if you know some things about ArcGIS Online and ArcGIS in general

- So that you can secure the right seat-counts and permissions
- So that you will have what you need when and where you need it
- So that you will appreciate the role of a good ArcGIS Analyst

**Curate** *verb*: to pull together, sift through, and select for presentation... —Dictionary.com

## **The role of ARCGIS is to manage, store, and curate what is available to Autodesk users:**

- **TO ACCESS AND EDIT YOUR ORGANIZATION'S CURATED DATA, OR TO CREATE, CURATE, AND PUBLISH YOUR OWN, YOU MUST HAVE AN ARCGIS ONLINE ACCOUNT:**
  - Without an ArcGIS Online account and the appropriate permissions you can only connect to publicly shared data.
  - If you buy seats, this means you will need to decide what to buy and what roles to ask for:
    - ✓ “User Types” define the overall scope of assigned privileges.
    - ✓ “Roles” are sets of default or custom privileges constrained by the User Type.

# ArcGIS Online User Types and Roles

## THINGS TO KNOW:

- The roles available depend on the User Type
- Some roles are not compatible with some user types.

Example 1: *With the User Type “Editor” and the default Role “Viewer” a person could connect to shared data in Infraworks and Civil 3D but would not be able to save-back changes to ArcGIS.*

*With the same User Type, and a default Role of “Data Editor” this person could save back changes but could not Publish data new data to ArcGIS.*

*With the User Type “Viewer” the person would not be able to be given the default role of “Editor” or above (except in a custom roles environment).*

Example 2: *The “Publisher” role allows a person to Publish and ALSO to perform analysis within ArcGIS Online and ArcGIS Pro, but the User Type defines the level of access the “Publisher” has to the available analysis tools.*

For instance: A default “Publisher” Role with the “Creator” User Type can access some ArcGIS analysis tools, whereas the same default “Publisher” Role used with the “GIS Professional Advanced” User Type can leverage ***all*** of the analysis tools available in ArcGIS Online.



# Today's Examples:

## IN ARCGIS WE WILL SEE:

- How content is created, saved, and shared (prepared) for use in Autodesk civil products.
- Examples of ways data can be collected and made into consumable content.
- A quick example of the advanced analysis a GIS Analyst might provide.



# Today's Examples:

## IN INFRAWORKS WE WILL DELVE INTO:

- Examples of ArcGIS data being accessed and connected to the Infraworks contextual model.
- Examples of ArcGIS data being configured and themed in the contextual model.
- A quick example of creatively presenting the complex analysis data our GIS analyst prepared.



# Today's Examples:

## IN CIVIL 3D WE WILL EXPLORE:

- Examples of ArcGIS data being accessed, connected, and consumed in Civil 3D.
- How to publish data back to ArcGIS for use in other parts of the value chain.
- Continued use of the data in Civil 3D and the “save-back” functionality available.



Your imagination is your  
only limitation.

-Unknown



# Questions?





# AUTODESK®

## Make anything™

Autodesk and the Autodesk logo are registered trademarks or trademarks of Autodesk, Inc., and/or its subsidiaries and/or affiliates in the USA and/or other countries. All other brand names, product names, or trademarks belong to their respective holders. Autodesk reserves the right to alter product and services offerings, and specifications and pricing at any time without notice, and is not responsible for typographical or graphical errors that may appear in this document.

© 2019 Autodesk. All rights reserved.

