

Infracore: There is a Trick for That

Juan Soto

Designer at Kimley-Horn Fort Worth, TX

Twitter: @Civil3D_Jedi

juan.soto@kimley-horn.com





About the speaker

Juan Soto is a civil designer for Kimley-Horn in the Fort Worth, Texas, office. Kimley-Horn ranks in the top third of Engineering News-Record (ENR) top 500 design firms, and the company also ranked as one of the “100 Best Companies to Work For” by Fortune magazine. Juan has more than 20 years of experience with both Autodesk, Inc., and Bentley products. His experience includes a variety of project types, including land development, aviation, industrial, highway, conceptual master planning, and 10 years as a CAD manager and 3D marketing visualization specialist. Juan’s current duties at Kimley-Horn also include being responsible for training users, generating 3D-visualization conceptual renderings to ensure constructability, and Building Information Modeling (BIM) coordination on projects. You can also find him contributing to the worlds of AutoCAD Civil 3D and InfraWorks360 software through his twitter account [@civil3d_jedi](#), and Autodesk User Group International (AUGI) articles

Class Summary

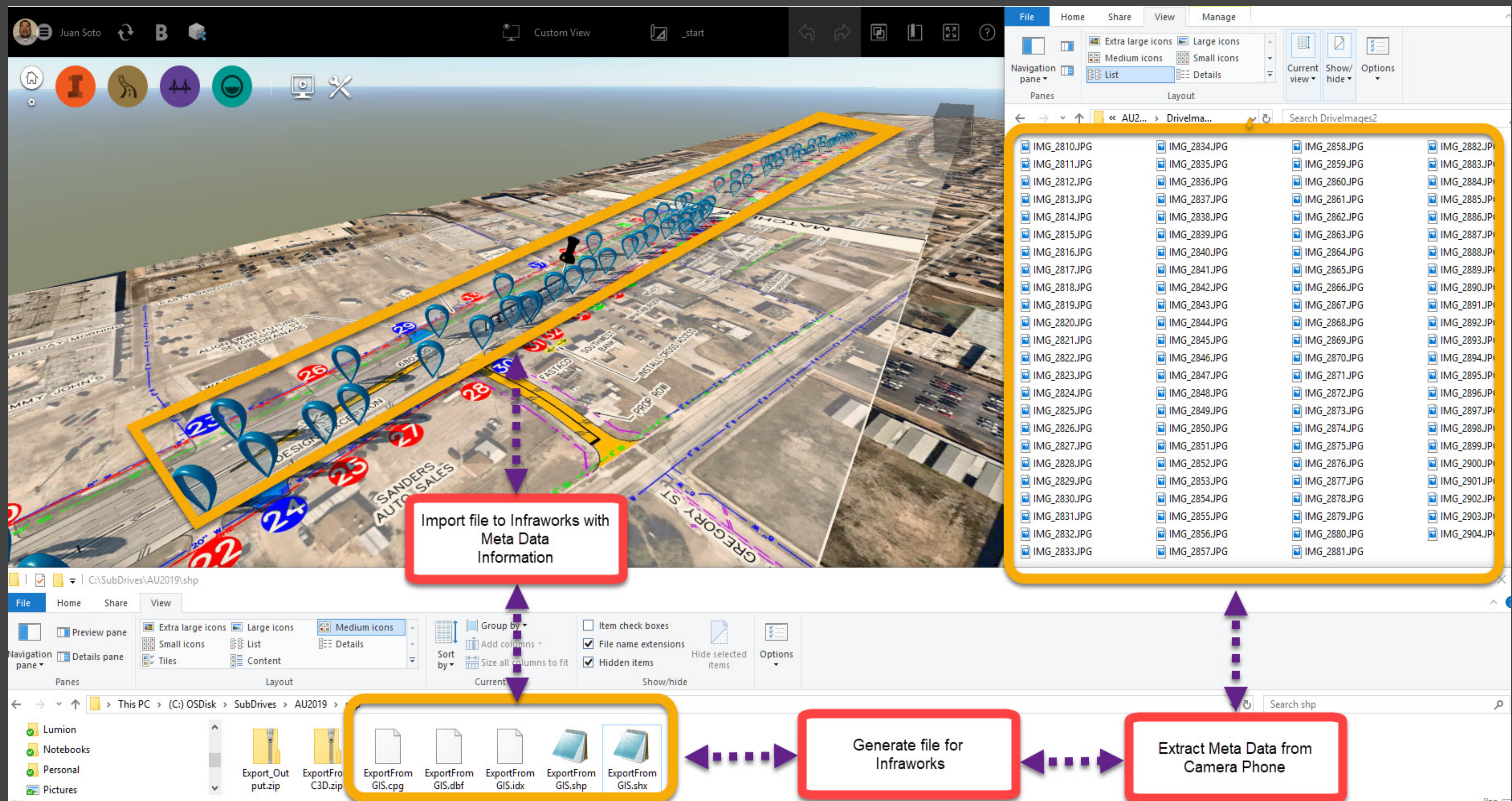
Infraworks: There is a Trick for That

Intended for beginning and intermediate users of InfraWorks software and AutoCAD Civil 3D software, this class will show the civil industry professional's techniques for creating renderings and depicting custom models utilizing multiple Autodesk tools. Using tools provided in Infrastructure Design Suite civil engineering software (AutoCAD Civil 3D software, InfraWorks software, Revit software, and 3ds Max software). This session will feature InfraWorks object data that can be linked to any external open-sourced shared location

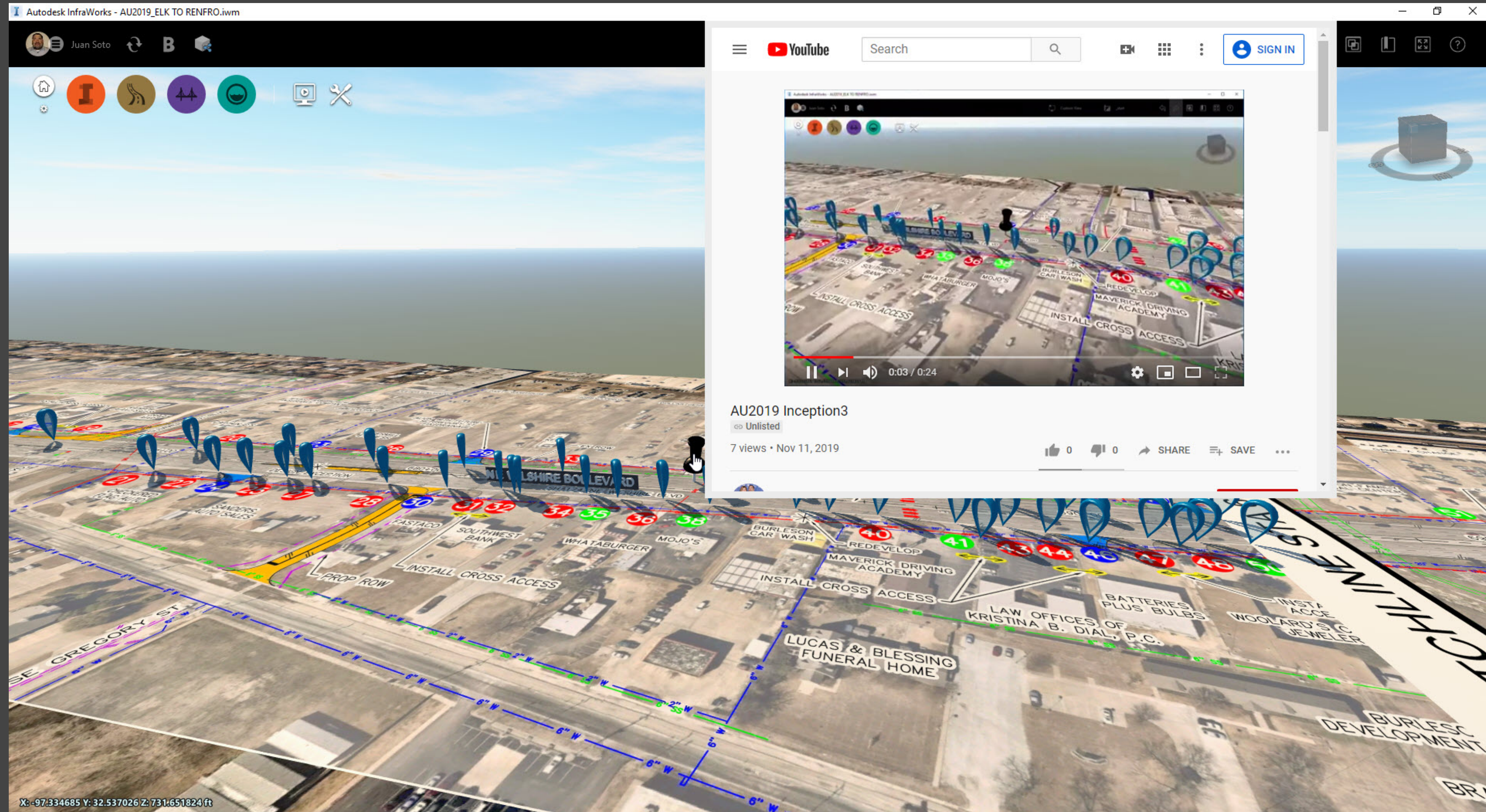
Class Summary

Learning Objectives

- Extract meta data from images to source data within Infraworks
- Source linked data from Dropbox or Google drive with in Infraworks
- Live link Google street views to points of interest
- Sharing your InfraWorks models with BIM 360 Docs VS Shared Views

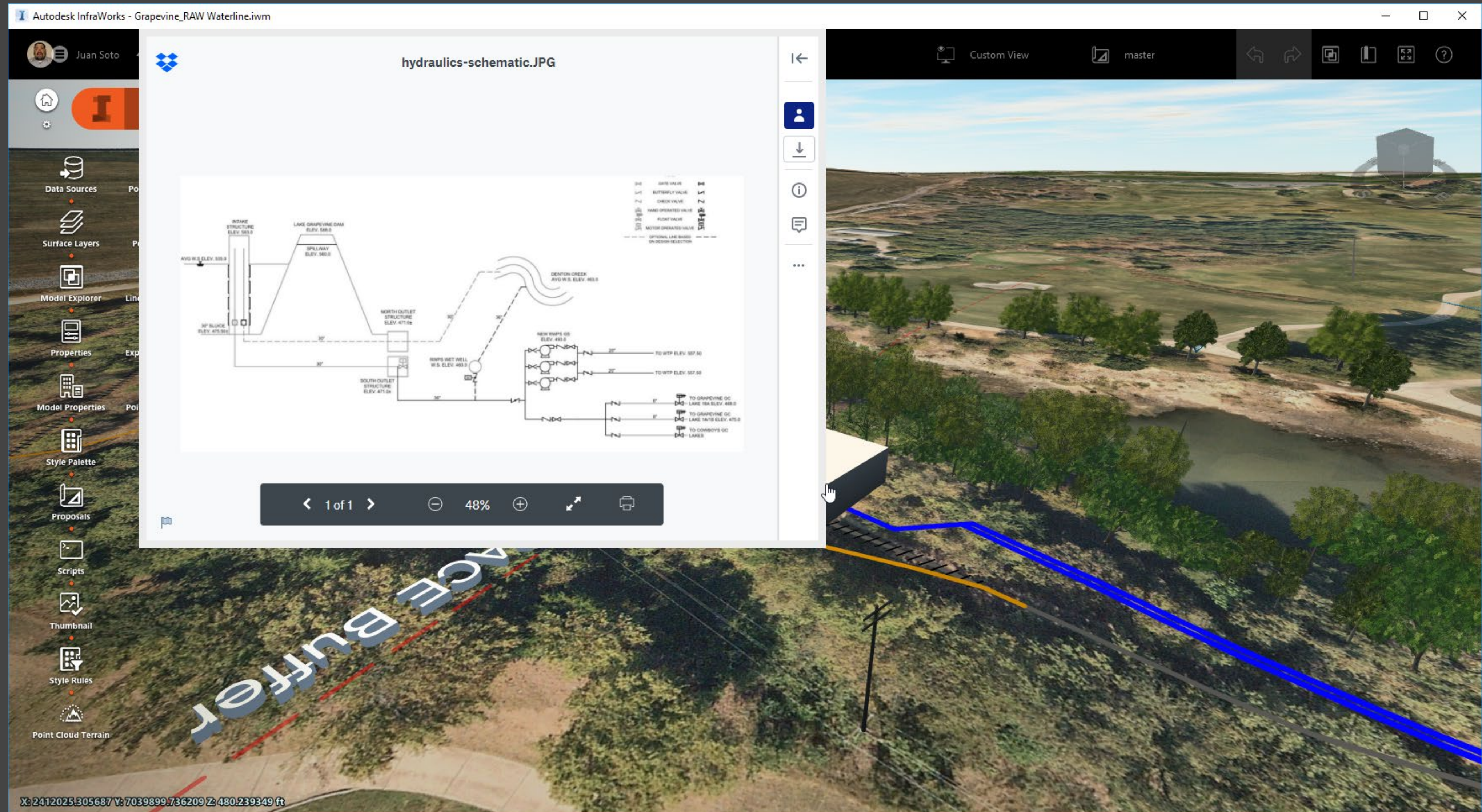


Extracting meta data from Images

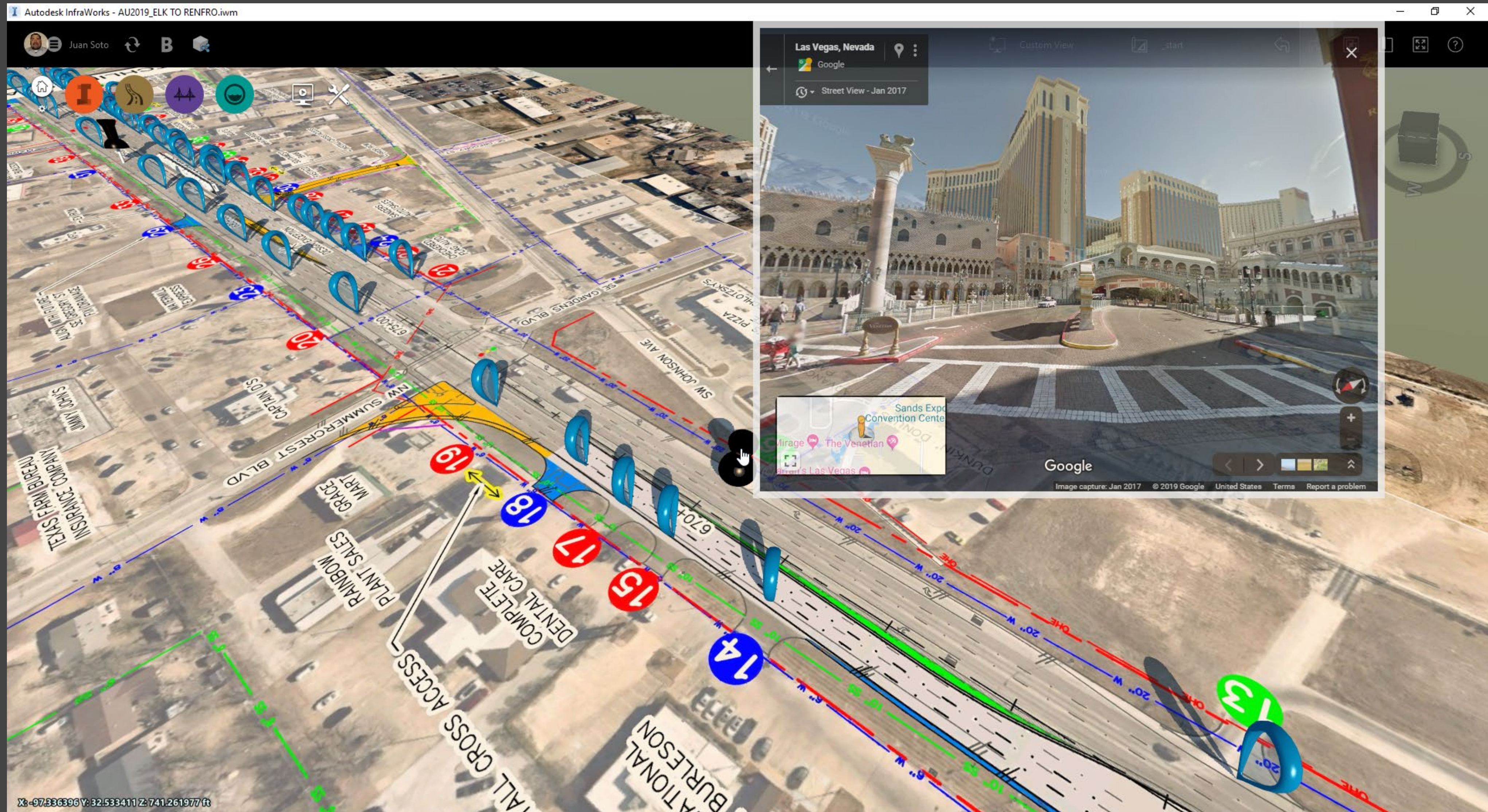


<https://youtu.be/f98itqylVac>

Using linked objects gives you more options in Infraworks- Images

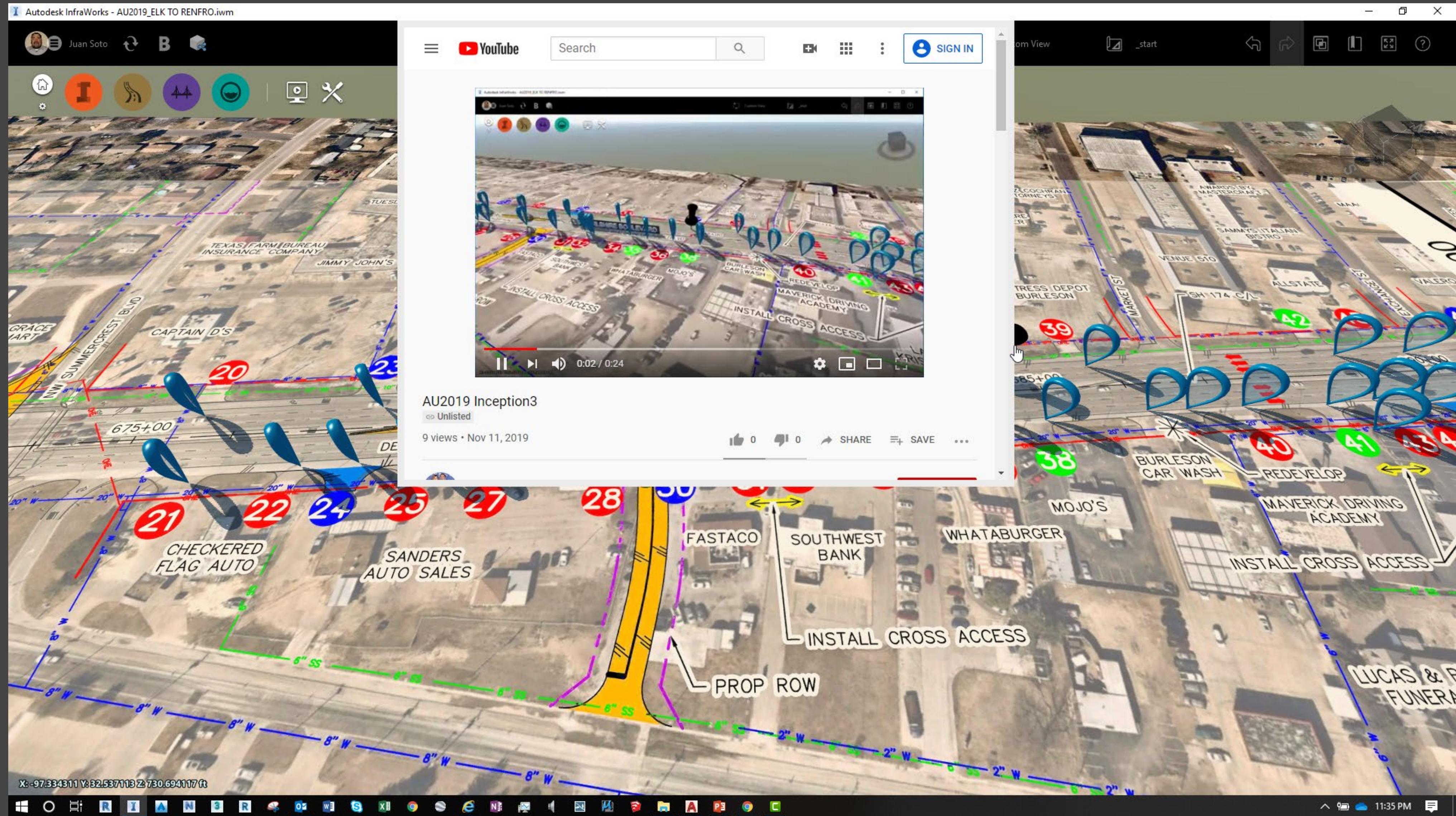


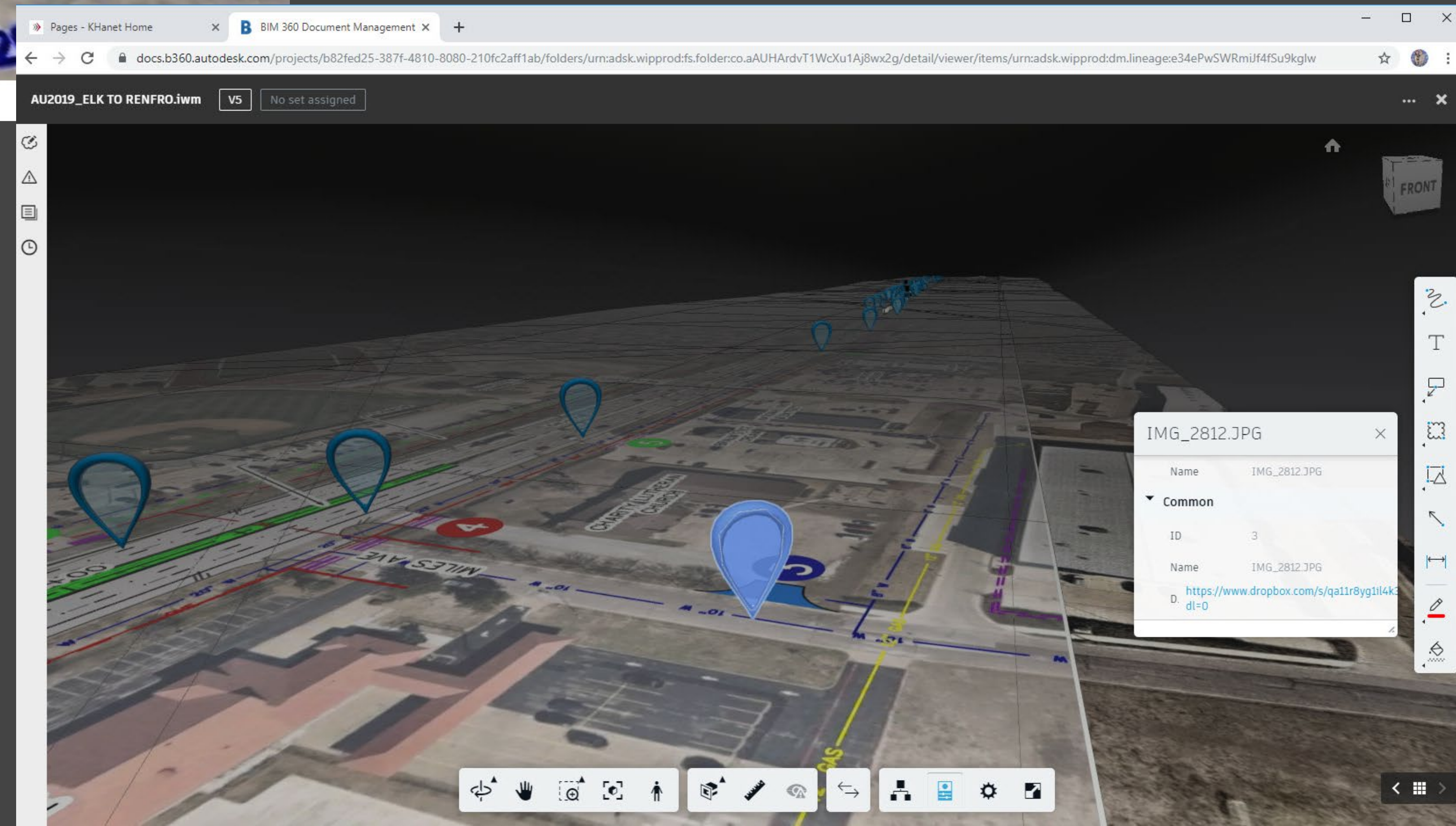
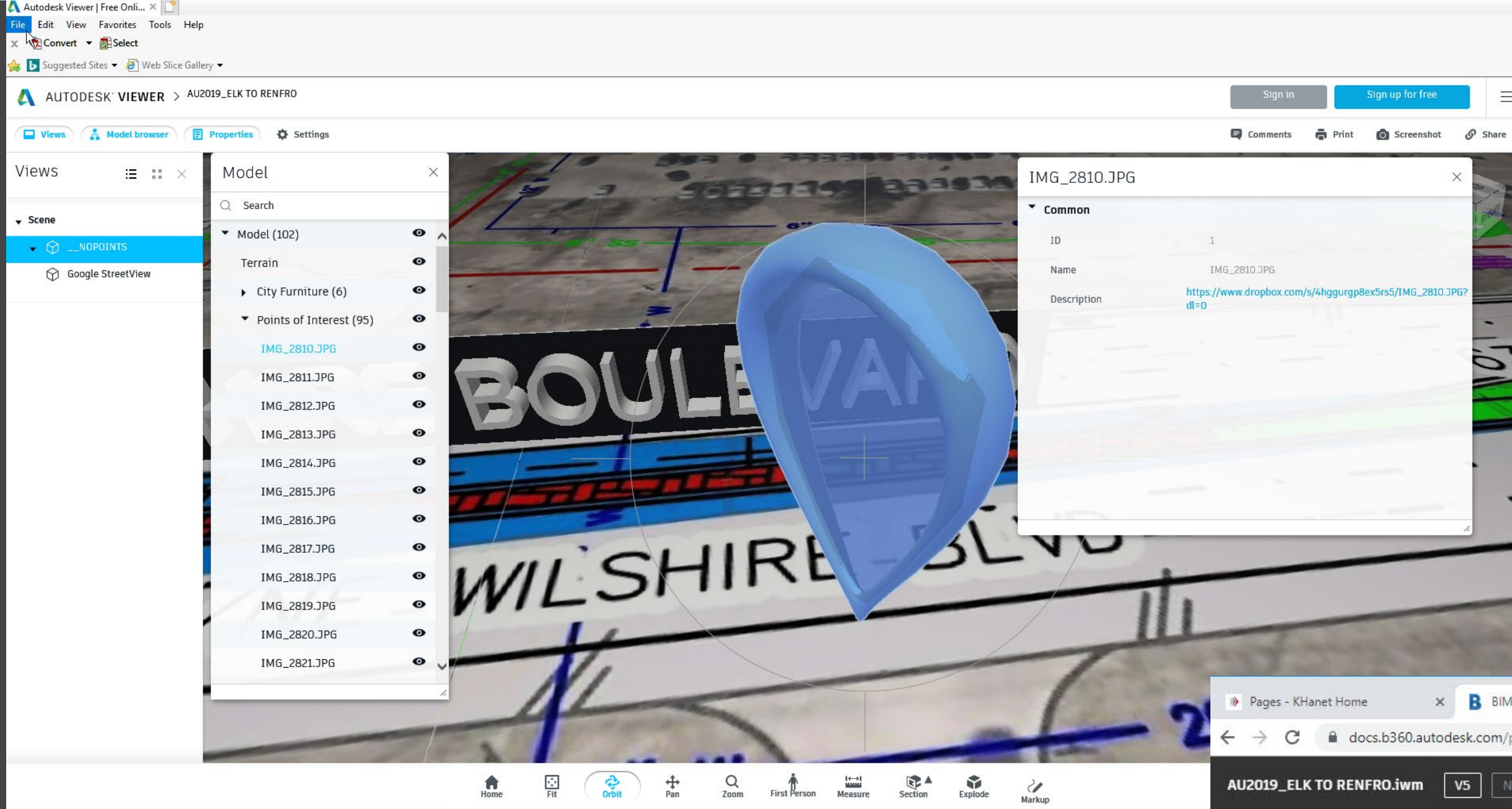
Using linked objects gives you more options in Infraworks - Data



<https://youtu.be/Tg1s4qINp9Q>

Using linked objects gives you more options in Infraworks- Google Street View





BIM360 vs Shared Views

The good, the bad and the ugly



AUTODESK®

Make anything™

Autodesk and the Autodesk logo are registered trademarks or trademarks of Autodesk, Inc., and/or its subsidiaries and/or affiliates in the USA and/or other countries. All other brand names, product names, or trademarks belong to their respective holders. Autodesk reserves the right to alter product and services offerings, and specifications and pricing at any time without notice, and is not responsible for typographical or graphical errors that may appear in this document.

© 2019 Autodesk. All rights reserved.

