

Professional Tips and Techniques using the Sheet Set Manager in AutoCAD

Sam Lucido

Design Systems Administrator | @CADproTips

About the Speaker

- I am a Design Systems Administrator with CHA Consultants, Inc.
- AutoCAD since early 1990s
- Civil 3D and Map 3D since 2007
- Technical Writer for AUGIWorld and former AUGI BoD Member
- AutoCAD and Civil 3D Certified Professional and Expert Elite Member
- Owner of CADproTips.com
- **If I can teach you one thing and make you think then I have done my job**

CADProTips

Providing the CAD knowledge you need to succeed

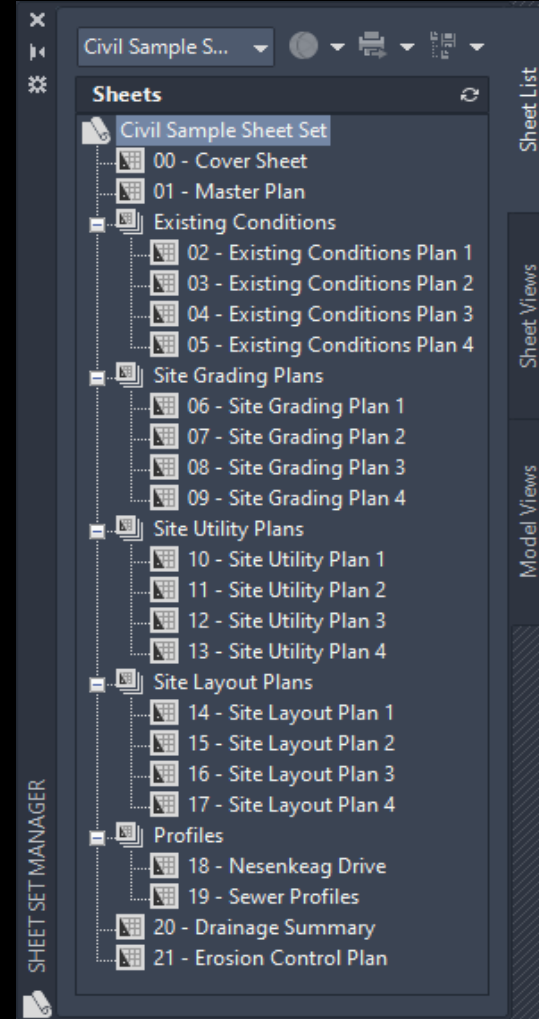
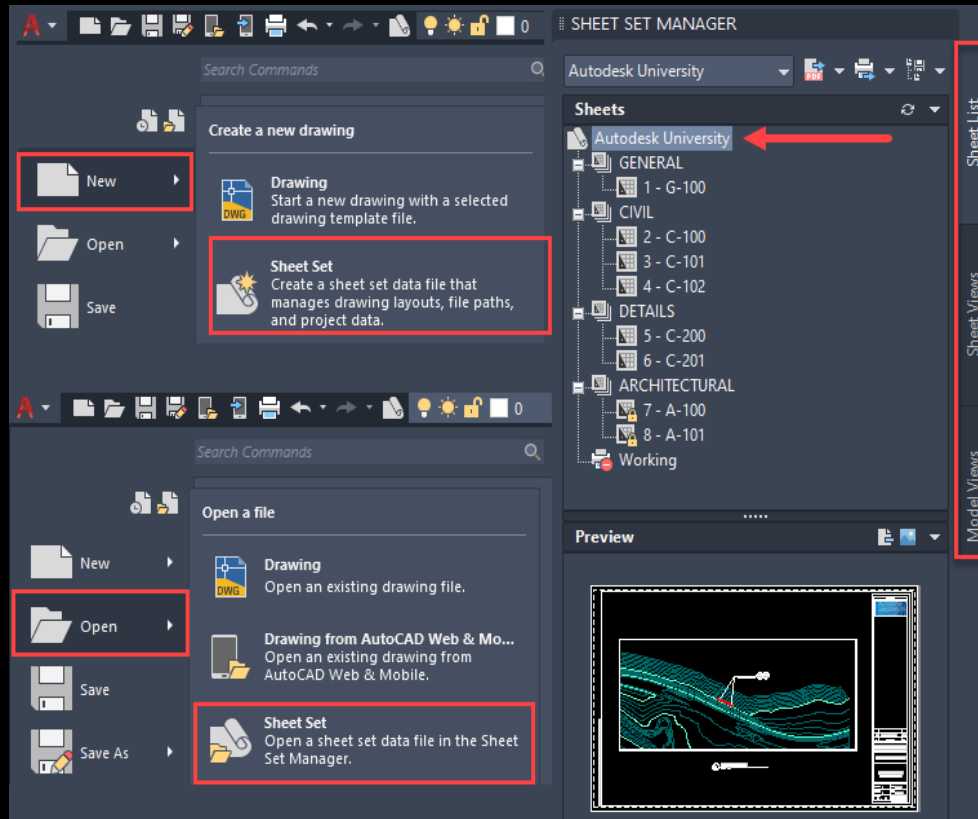
Summary

Within this final installment of my Sheet Set Series we are going to cover over 50 tips and techniques on using the Sheet Set Manager efficiently in AutoCAD. We will go live in the program and navigate through several different sheet sets uncovering some of the hidden powers behind using the Sheet Set manager

Most importantly, you'll be able to bring back value to your employer and the knowledge to help you excel within your field.

Learning Objectives

Identify ways to create several templates for different disciplines with the Sheet Set Manager.



Sheet Set Templates

Expand your knowledge of the Sheet Set Manager with
lesser-known tips and techniques increase productivity

Publsi hcollate	Preview	SSMPolltime
Menubar	Model Space Tab	ALT 0160
Callout Blocks	Unreconciled	SSMAutoopen
Resources	.dwt	PageSetup
Sorting Fields	.dst	Named Views
Templates	Sheet Views	SSMAutoopen

Mastering AutoCAD Sheet Sets eBook
A Complete Guide to the Sheet Set Manager

Use the power of fields to populate and customize common data within your Sheet Sets.

Blue lettering references a Field Name in AutoCAD

Red lettering Represents a custom property added in the Sheet Set Manager.

1. Sheet Description
CurrentSheetDescription
2. Drawing Name Line 1
CurrentSheetSetCustom
01-Drawing Title First
3. Drawing Name Line 2
CurrentSheetSetCustom
02-Drawing Title Second
4. Project Name Line 1
CurrentSheetSetCustom
03-Project Name First
5. Project Name Line 2
CurrentSheetSetCustom
04-Project Name Second
6. Drawn by
CurrentSheetCustom
01-Drawn By
7. Checked by
CurrentSheetCustom
02-Checked By
8. Sheet number
CurrentSheetNumber
9. Sheet total
CurrentSheetSetCustom
05-Sheet Total
10. Scale
CurrentSheetSetCustom
06-Drawing Scale
11. Date
CurrentSheetSetProjectMilestone
12. Sheet Title
CurrentSheetTitle
13. Revision number
CurrentSheetSetCustom
07a-RevNo
14. Revision description
CurrentSheetSetCustom
07b-RevDesc
15. Revision date
CurrentSheetSetCustom
07c-RevDate

13	14	15
No.	Revision/Issue	Date

1 SHEET DESCRIPTION

2 DRAWING NAME 1

3 DRAWING NAME 2

4 PROJECT NAME 1

5 PROJECT NAME 2

Drawn By: 6	Scale: 10
Check By: 7	Date: 11
Sheet No. 8 of 9	12 C-100

Sheet Set Properties - Project Specific Name

Sheet Set	
Name	Project Specific Name
Sheet set data file	C:\datasets\CES500018_TipsnTechniques_SSM_AU2021\25_SSM_CA...
Description	Enter Project Name
Model view	C:\datasets\CES500018_TipsnTechniques_SSM_AU2021\25_SSM_CA...
Label block for views	
Callout blocks	
Page setup overrides file	C:\datasets\CES500018_TipsnTechniques_SSM_AU2021\25_SSM_CA...
Project Control	
Project number	00000-000
Project name	MY NEW DESIGN PROJECT
Project phase	DESIGN SUBMITTAL
Project milestone	00-OCT-21
Sheet Custom Properties	
01 - Drawn By	
02 - Designed By	
03 - Checked By	
04 - Approved By	
Sheet Creation	
Sheet storage location	C:\datasets\CES500018_TipsnTechniques_SSM_AU2021\25_SSM_CA...
Sheet creation template	G-101(C:\datasets\CES500018_TipsnTechniques_SSM_AU2021\25_S...
Prompt for template	No
Sheet Set Custom Properties	
001 Sheet Total	00
002 Client Name 01	MY NEW CLIENT LINE 1
002 Client Name 02	MY NEW CLIENT LINE 2
003 Sheet Scale (Global)	SHOWN
004 Project Name 01	%U
004 Project Name 02	%U
005 Project Address	5000 WOODWARD AVENUE
006 City, State	DETROIT, MICHIGAN
007 Drawn By (Global)	
008 Designed By (Global)	
009 Checked By (Global)	
010 Approved By (Global)	
01a - Rev No (Global)	
01b - Rev Desc (Global)	

Using Fields with the SSM

Learn how to leverage and understand system variables that can affect Sheet Set Manager Performance.

CLOUDCOLLABMODIFIEDOPTION

Controls when documents (DWG and DWT files) are unlocked in BIM 360 after they are closed in AutoCAD

FIELDEVAL

Controls how fields are updated.

SSFOUND

Displays the sheet set path and file name if a search for a sheet set is successful.

SSLOCATE

Controls whether the project associated with a drawing is located and opened when the drawing is opened

SSMAUTOOPEN

Controls the display behavior of the Project Manager when a drawing associated with a layout is opened. Setting this to 1 will open the sheet set automatically when the drawing file is opened.

SSMPOLLTIME

The SSMPOLLTIME timer sets the time in seconds between automatic refreshes of the status data of sheets in a sheet set. Valid values are 20-600. The SSMSHEETSTATUS system variable must be set to 2 for the timer to operate.

SSMSHEETSTATUS

The status data for layouts in the current project includes whether a layout is locked and whether a layout is missing (or found in an unexpected location). This status data can be updated automatically for all layouts.

SSMSTATE

Indicates whether the Project Manager window is open or closed.

UPDATETHUMBNAI

Controls updating of the thumbnail previews for views and layouts



A man and a woman in business attire are standing in an industrial setting, looking at a tablet together. The man is wearing a dark blue blazer over a light blue checkered shirt, and the woman is wearing a white shirt with black vertical stripes and dots. They are both looking down at the tablet, which the woman is holding. The background shows a large industrial space with red metal beams and bright windows. The text "Thank you!" is overlaid in the center of the image.

Thank you!

The background features four abstract, dark, metallic-looking geometric shapes in the corners, resembling stylized computer monitors or architectural elements. They are arranged symmetrically, with two in the top corners and two in the bottom corners, framing the central text.

AUTODESK UNIVERSITY

Autodesk and the Autodesk logo are registered trademarks or trademarks of Autodesk, Inc., and/or its subsidiaries and/or affiliates in the USA and/or other countries. All other brand names, product names, or trademarks belong to their respective holders. Autodesk reserves the right to alter product offerings, specifications and pricing at any time without notice, and is not responsible for typographical or graphical errors that may appear in this document.

© 2021 Autodesk. All rights reserved.