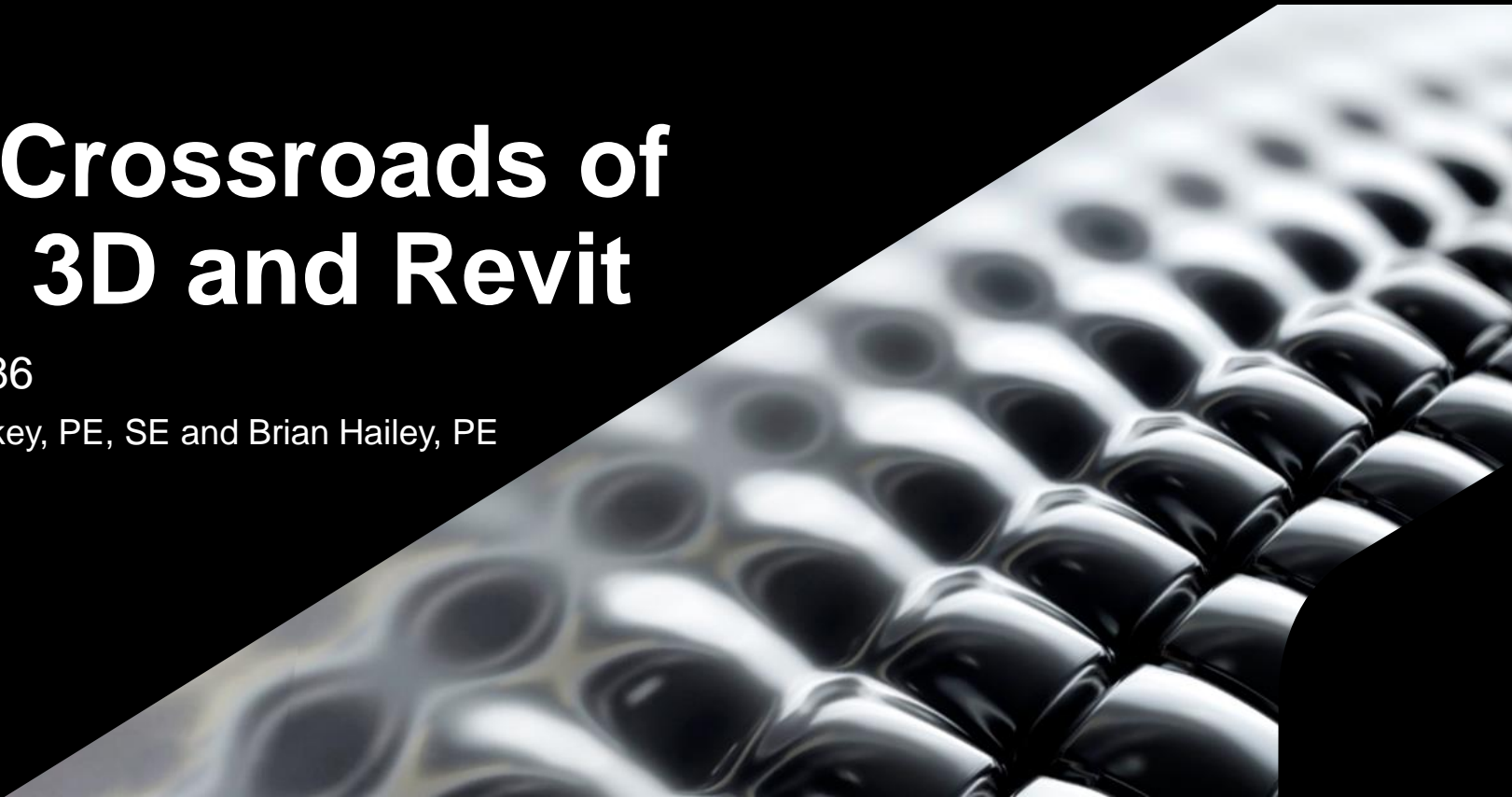




# The Crossroads of Civil 3D and Revit

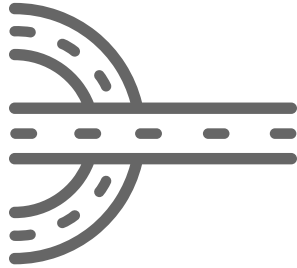
CES501286

Desirée Mackey, PE, SE and Brian Hailey, PE  
GEI Consultants



# A Little Background...

How we got here

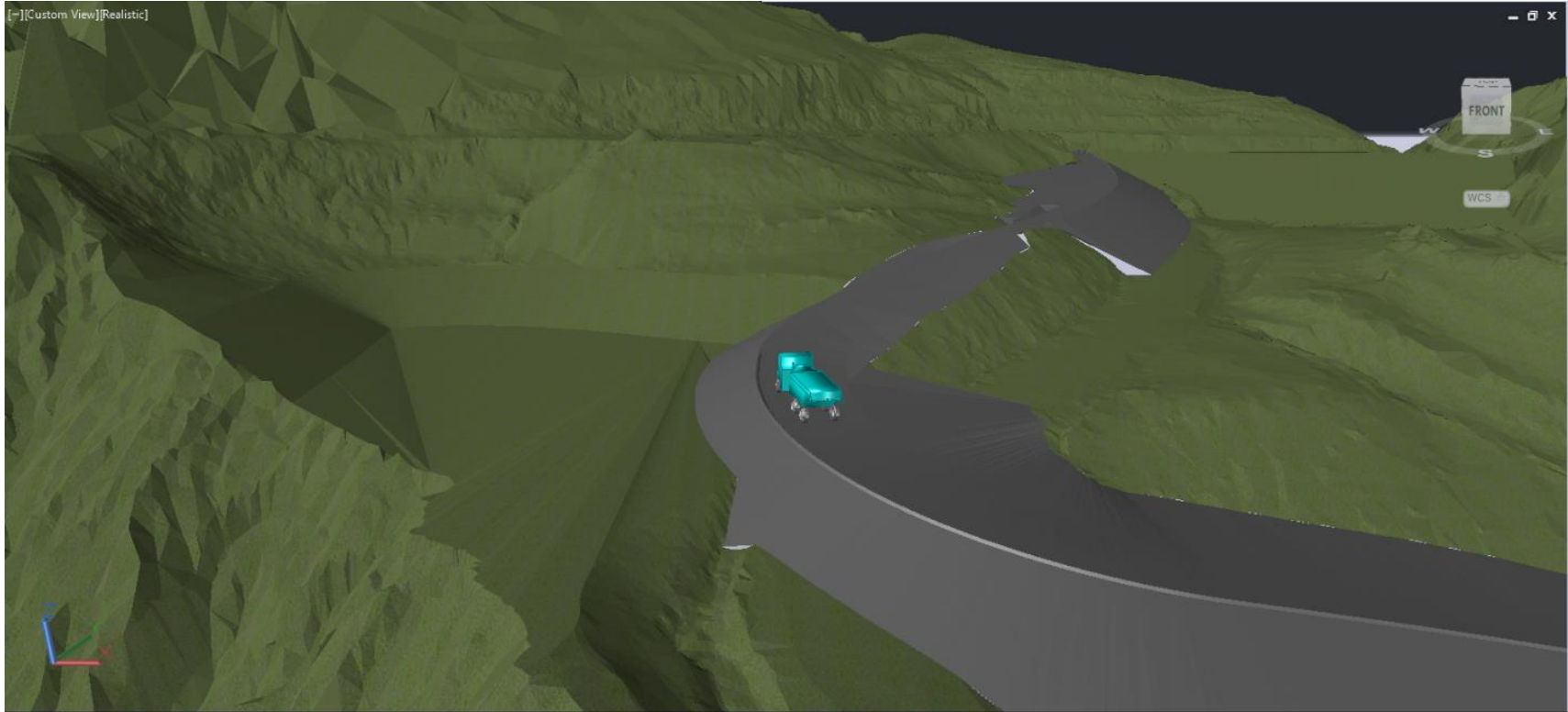


A close-up, black and white photograph of a highly reflective, woven mesh or fabric texture. The mesh is composed of many small, rounded, interconnected elements that create a complex, three-dimensional pattern. The lighting highlights the glossy surface, creating bright reflections and deep shadows that emphasize the texture. The image is partially obscured by a black diagonal shape that serves as a background for the text.

**When Civil 3D is  
the Answer**

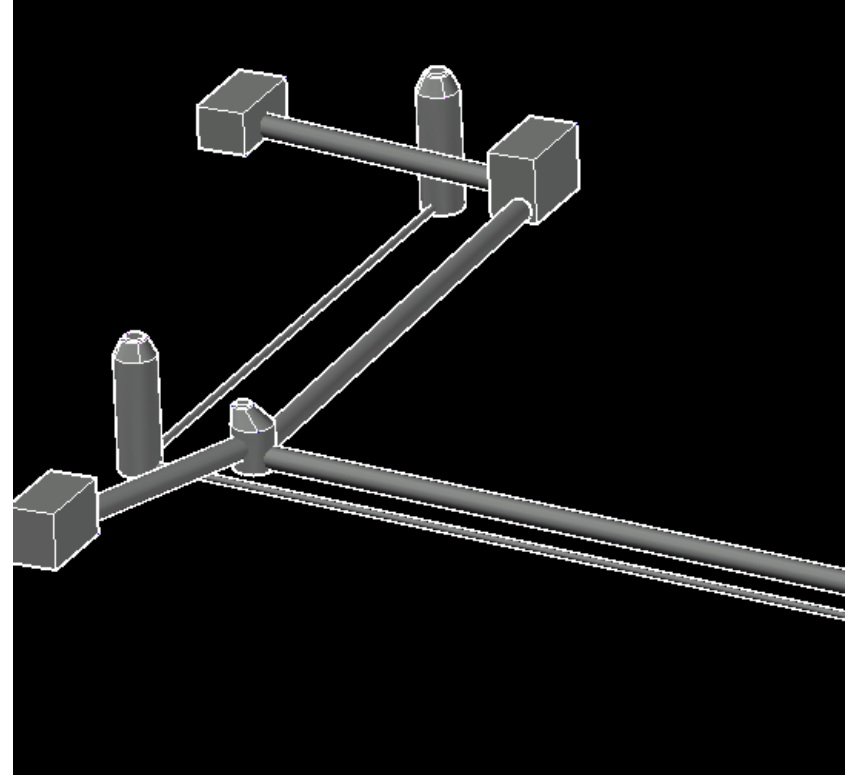
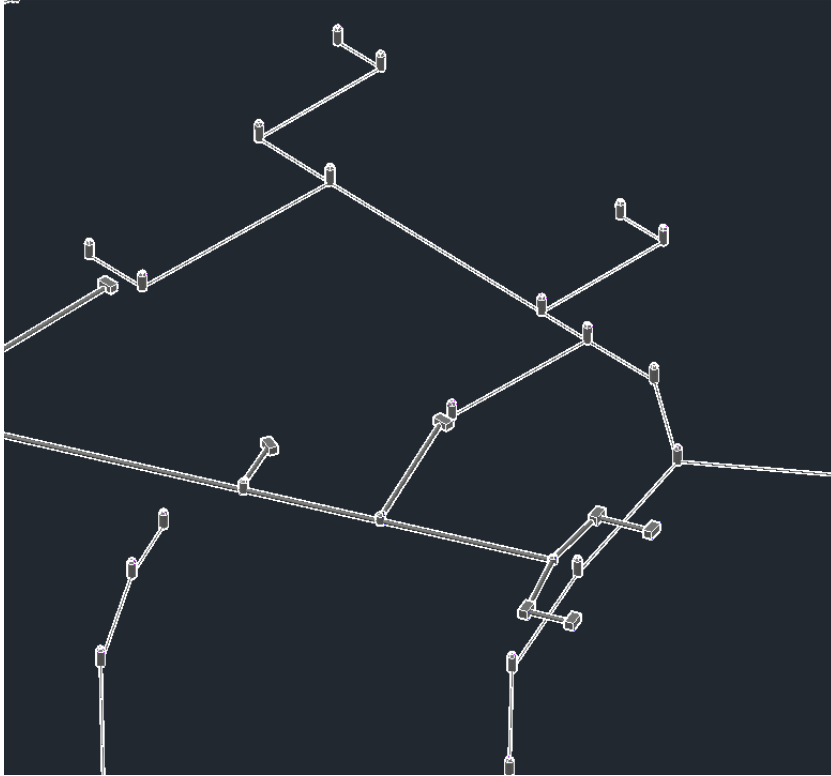
# Roads

Usually Civil 3D



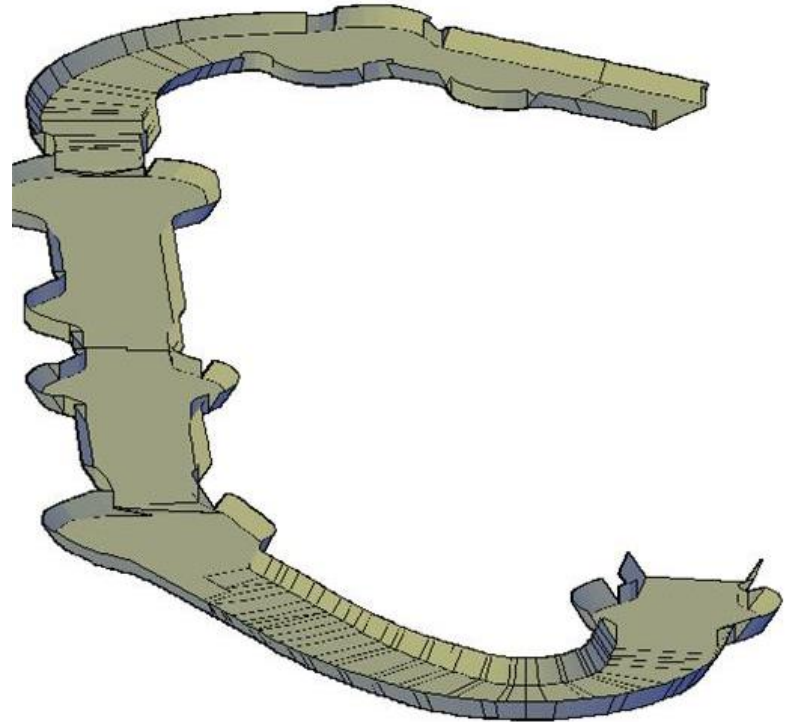
# Underground Utilities

Also good in Civil 3D



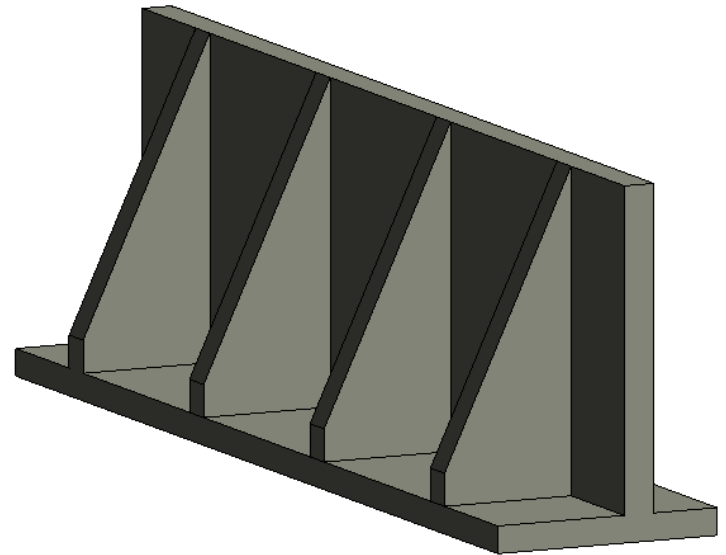
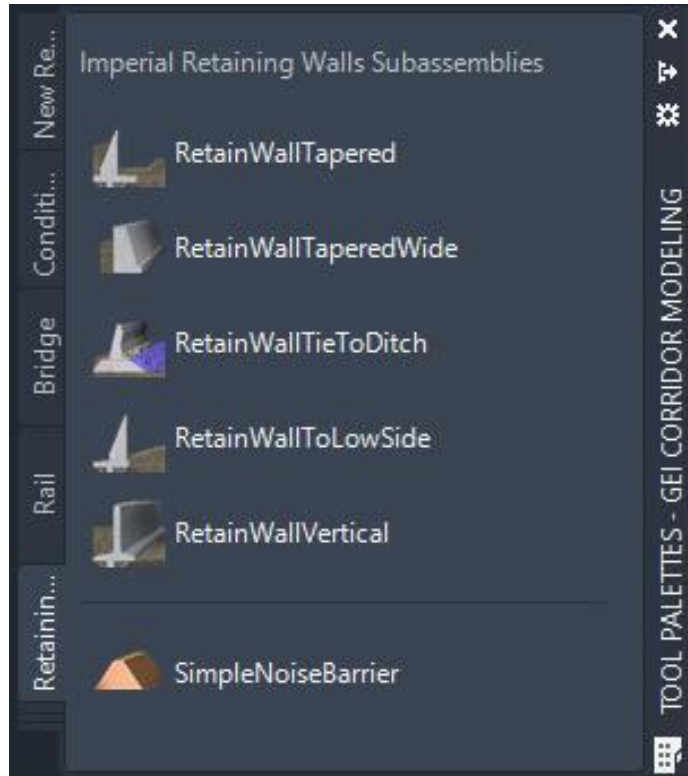
# A little less obvious

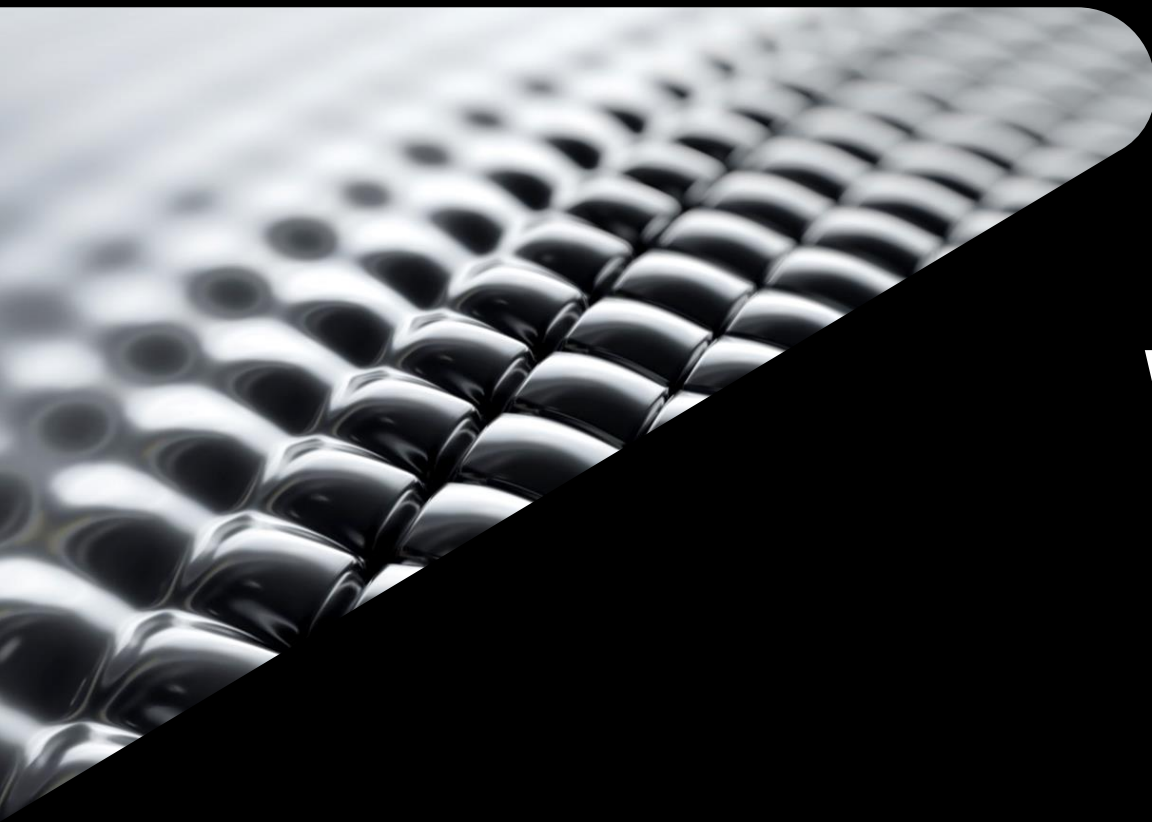
Still good in Civil 3D



# Walls

Sometimes Civil 3D



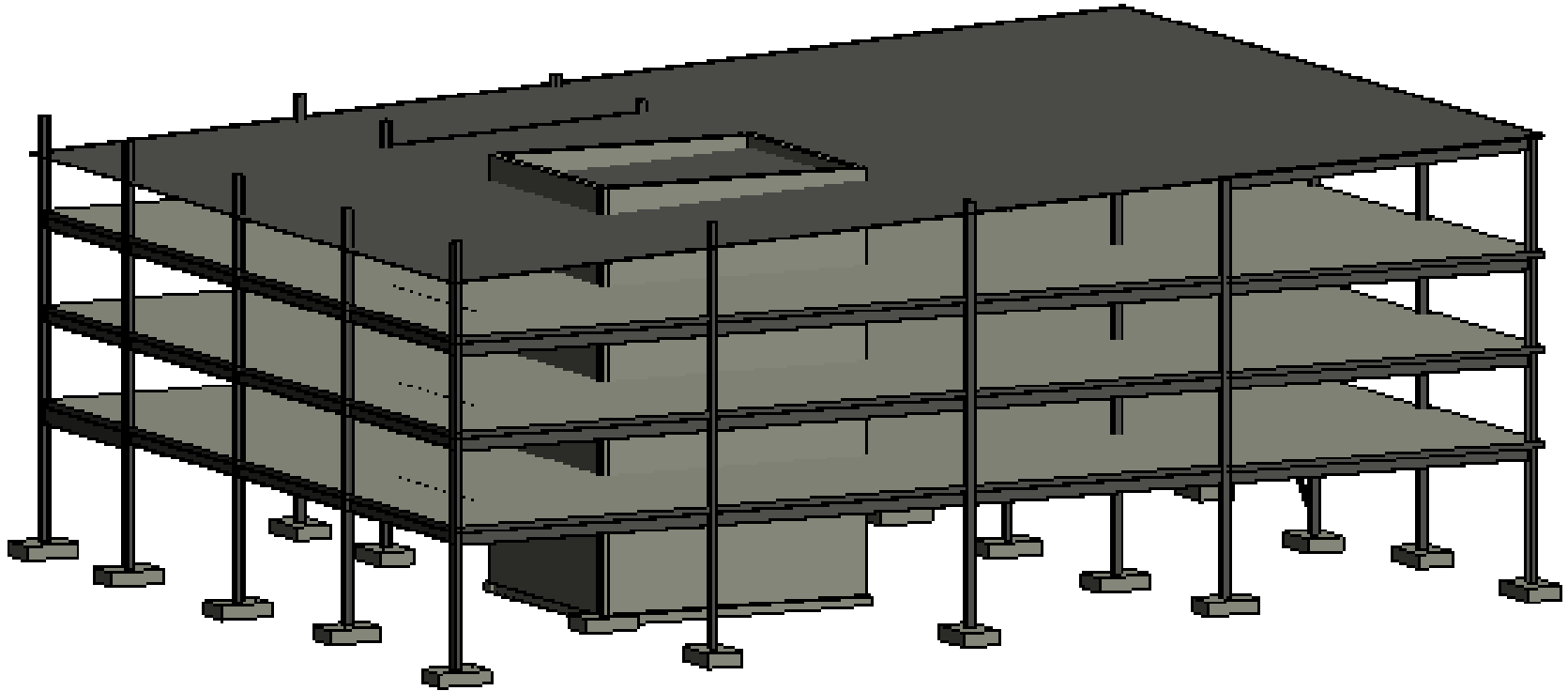


**When Revit is  
Right**



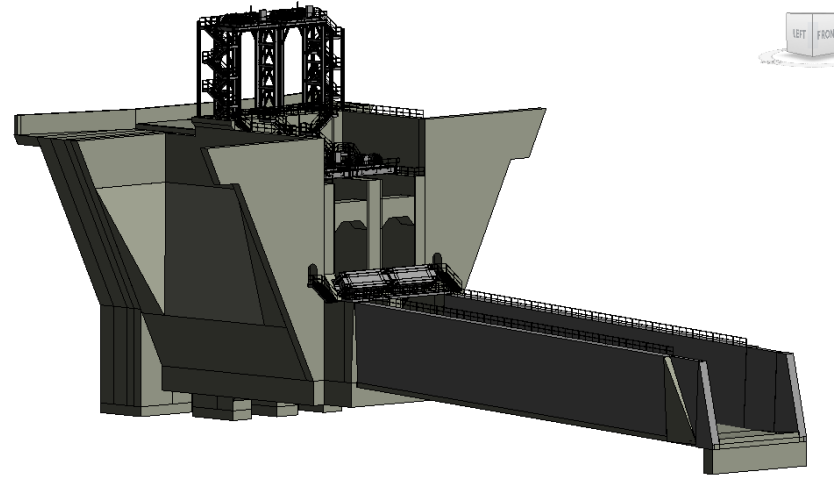
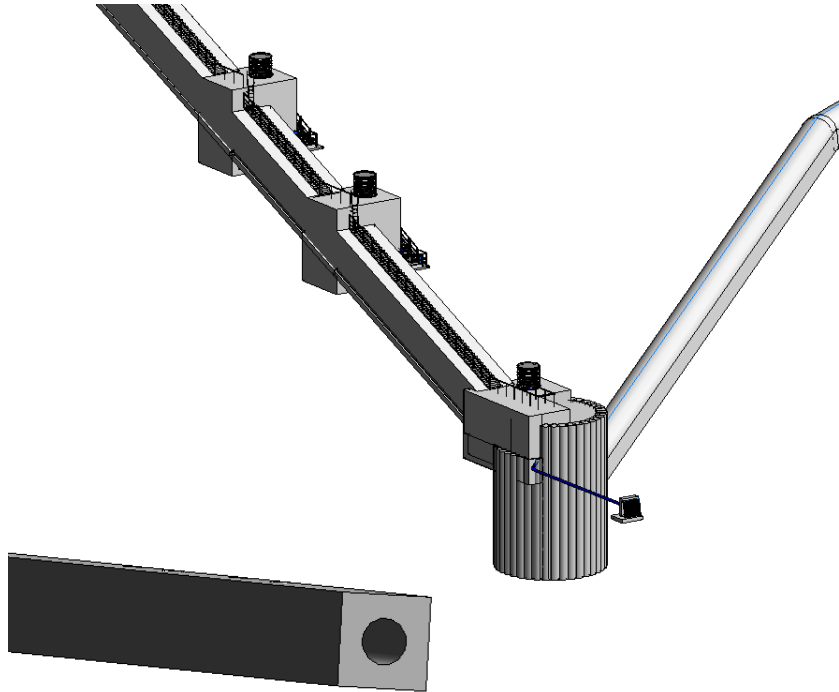
# Buildings

Revit is the easy choice



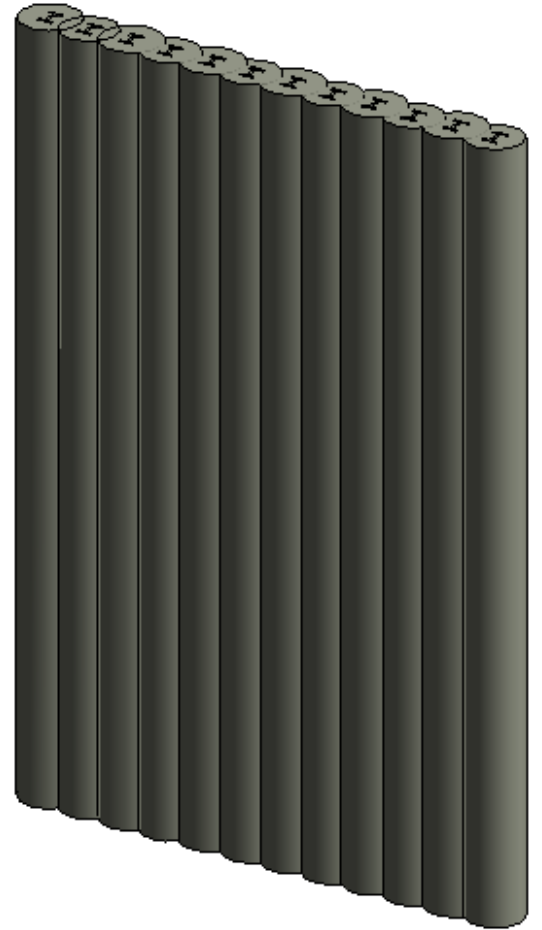
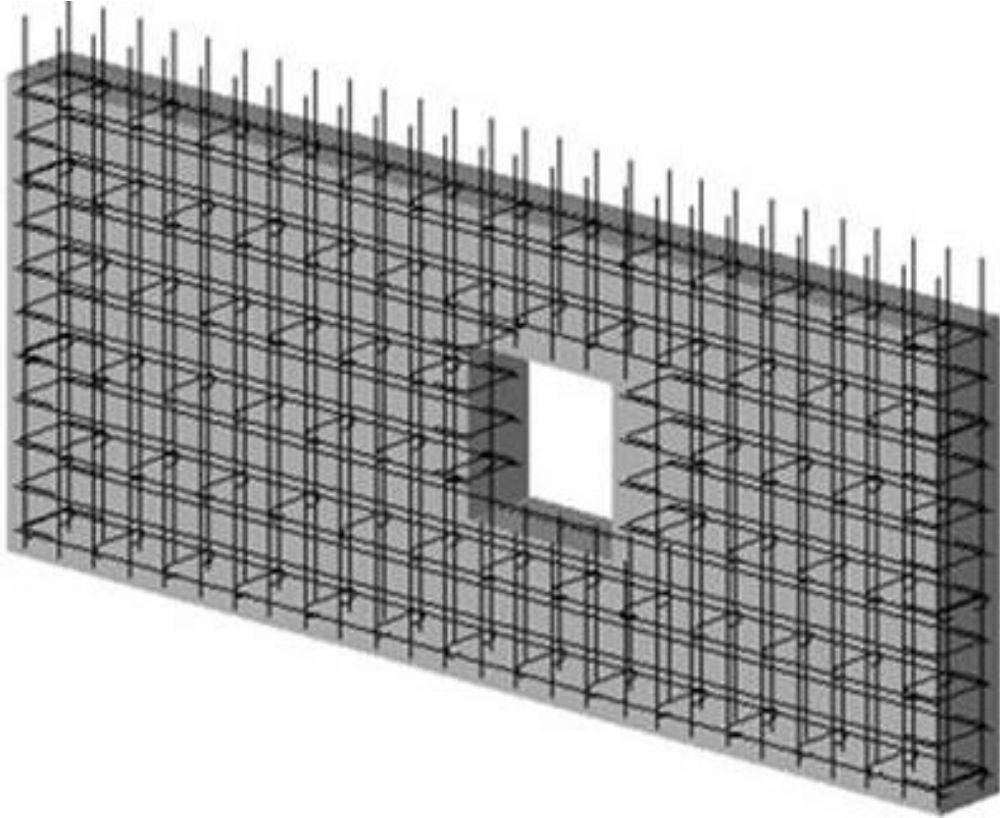
# “Building-Type” Structures

Still good in Revit



# Other Structure Options

Good candidates for Revit

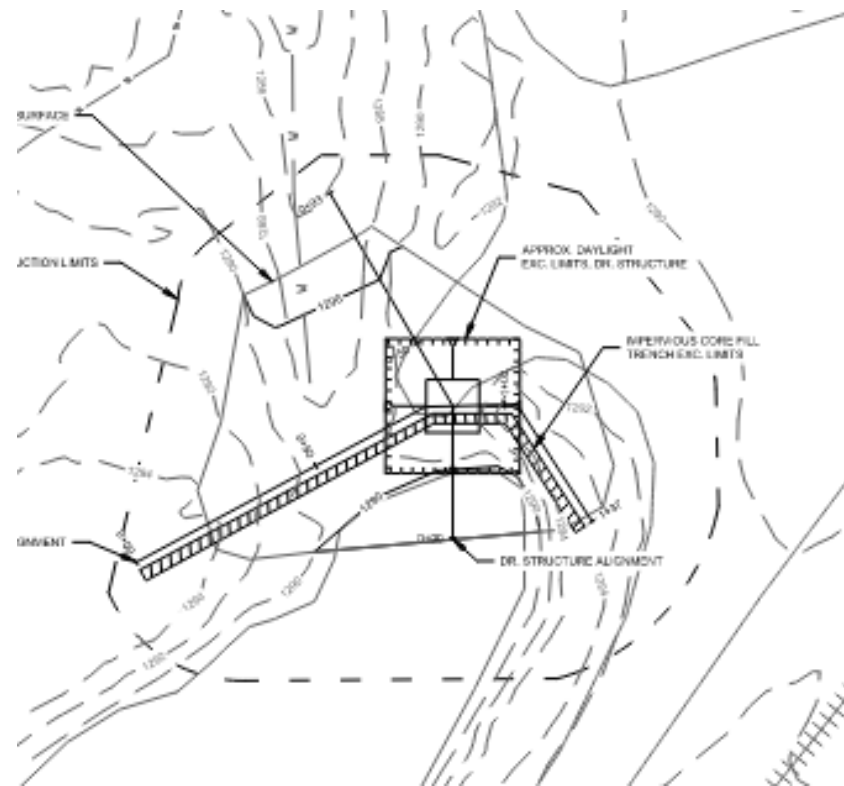
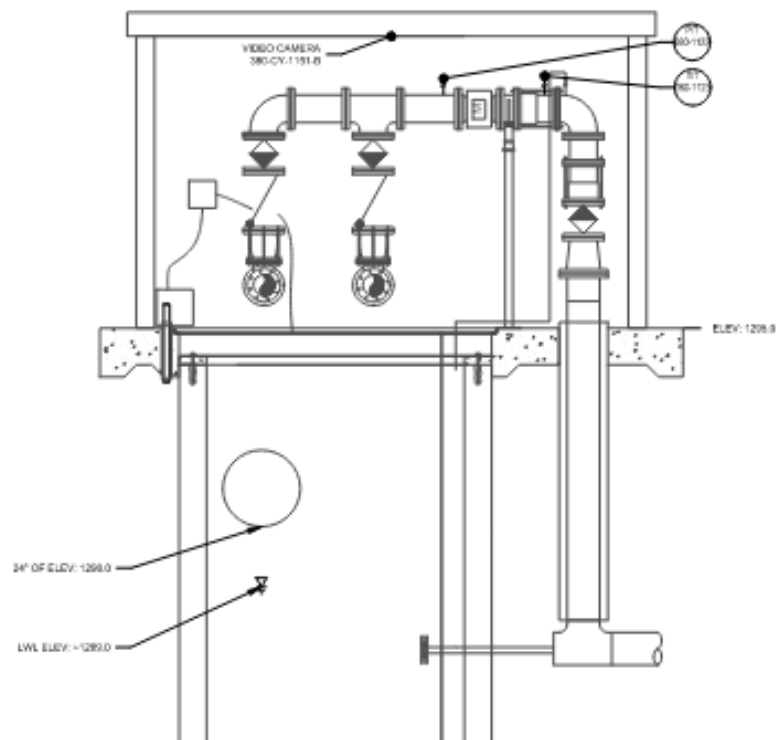


A close-up, black and white photograph of a woven mesh texture, possibly a metal screen or a fine fabric, showing a grid of small, rounded openings. The texture is slightly out of focus in the background, creating a sense of depth.

# **When Civil 3D and Revit Should Work Together**

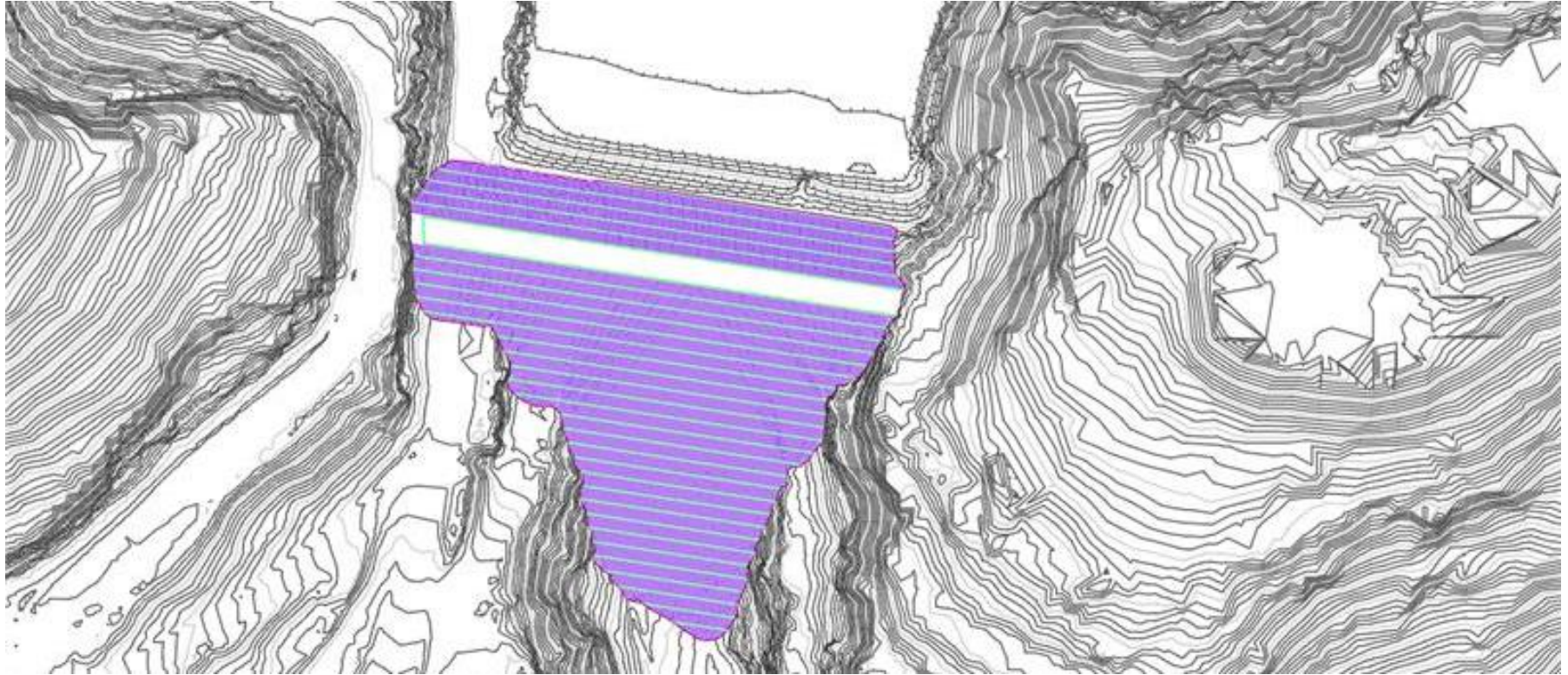
# Integrated Projects

More than one discipline



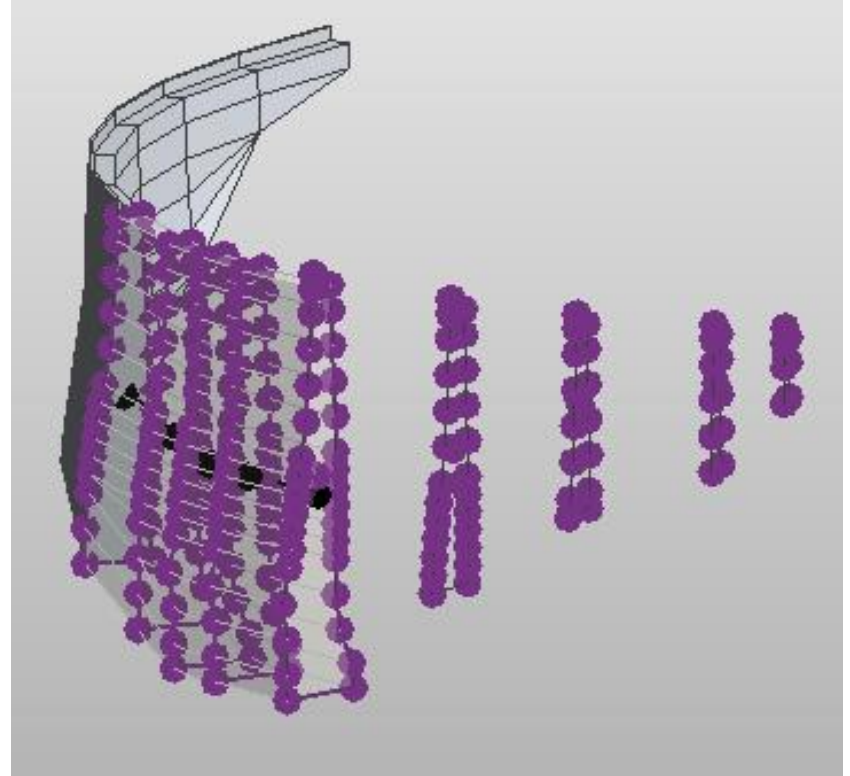
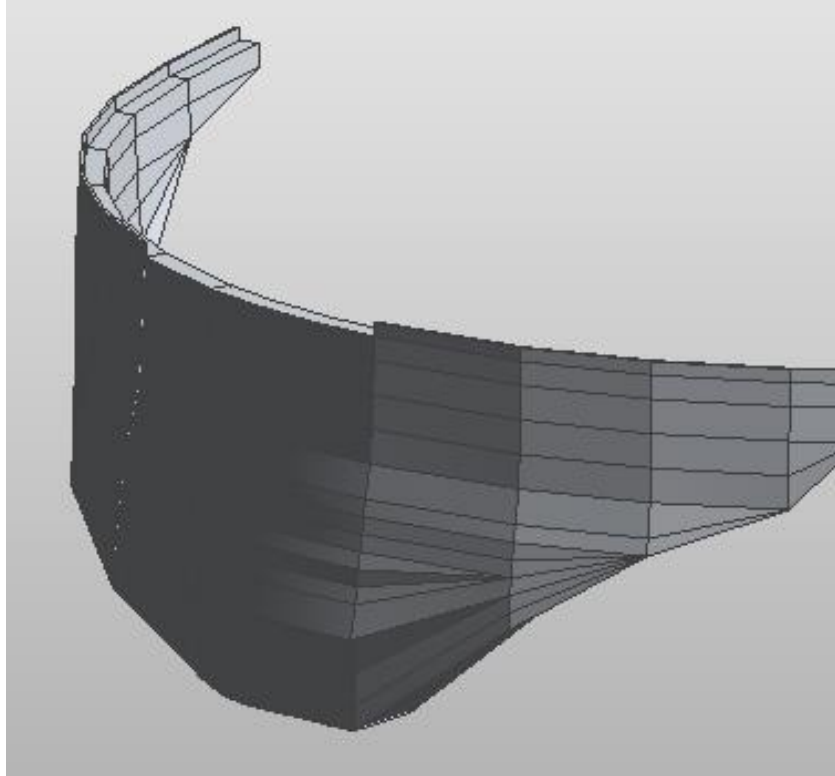
# Dams

Use both!



# Dams

Use both!





# Bridges

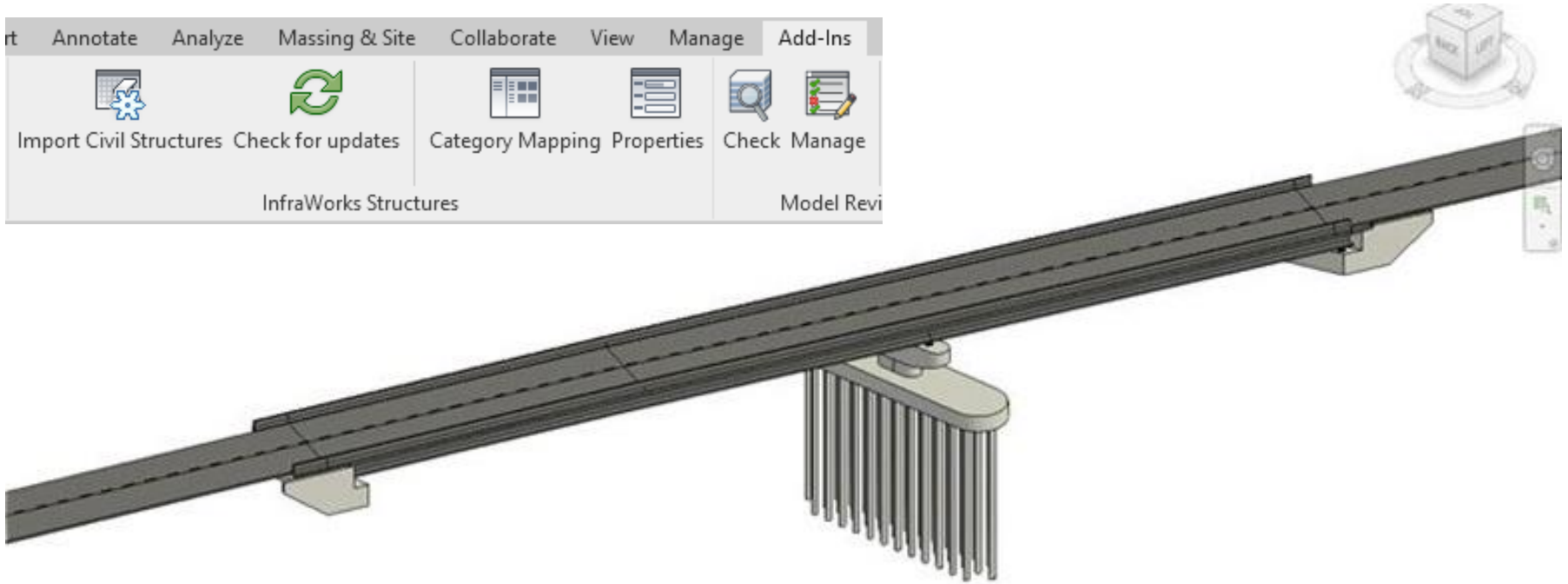
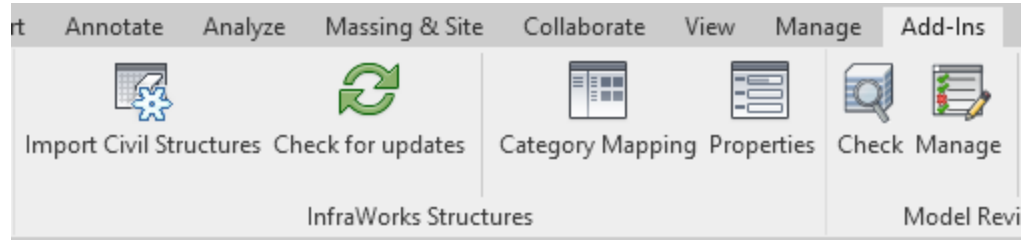
Lots of Options





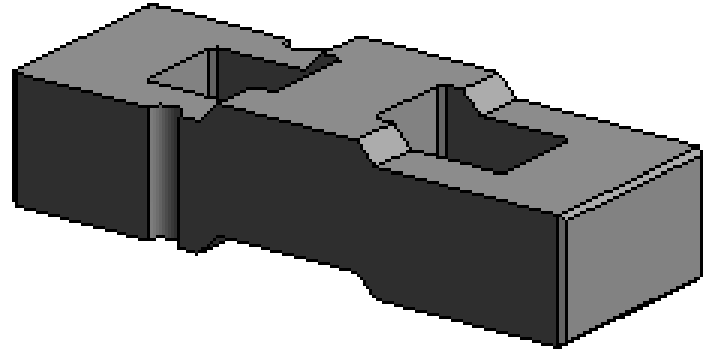
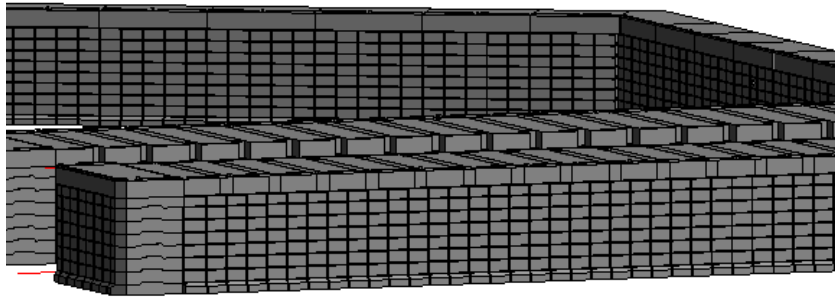
# Bridges

Lots of Options



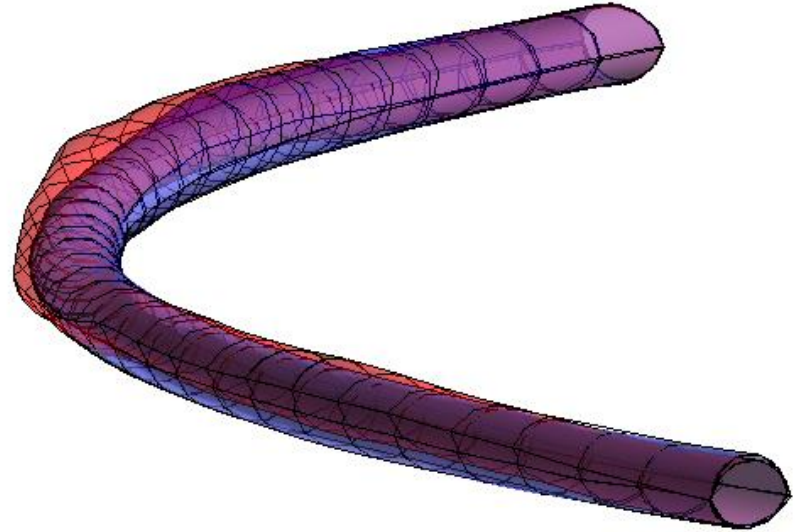
# Piers

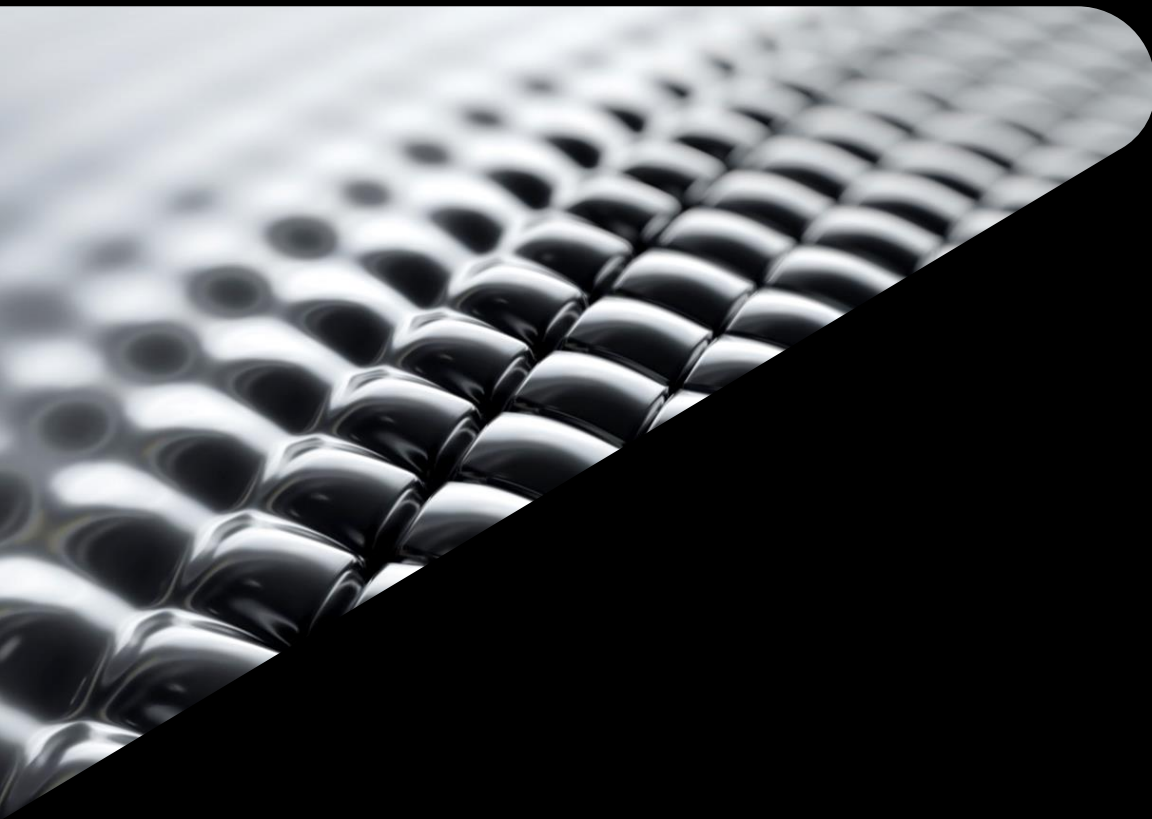
It depends...



# Tunnels

And other tunnel-like things



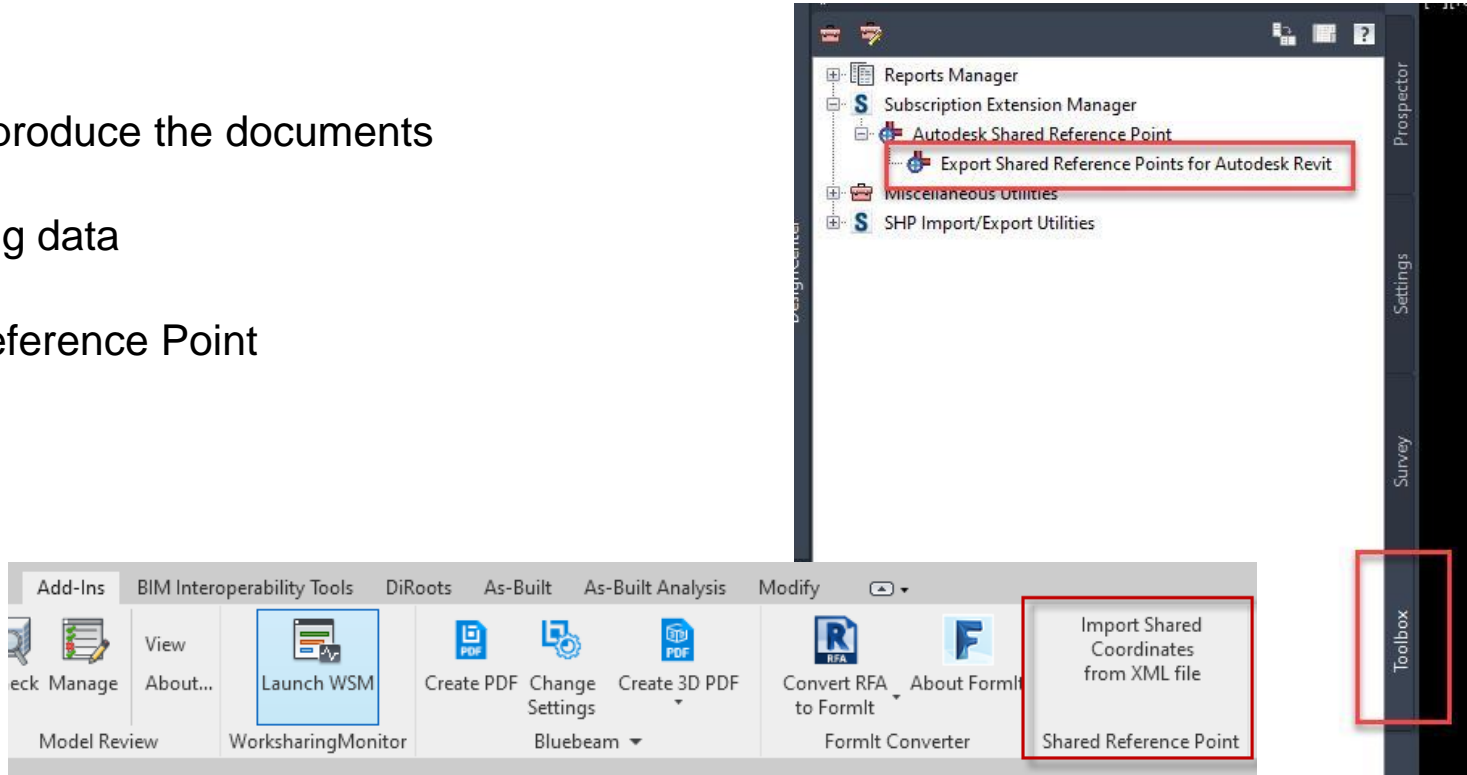


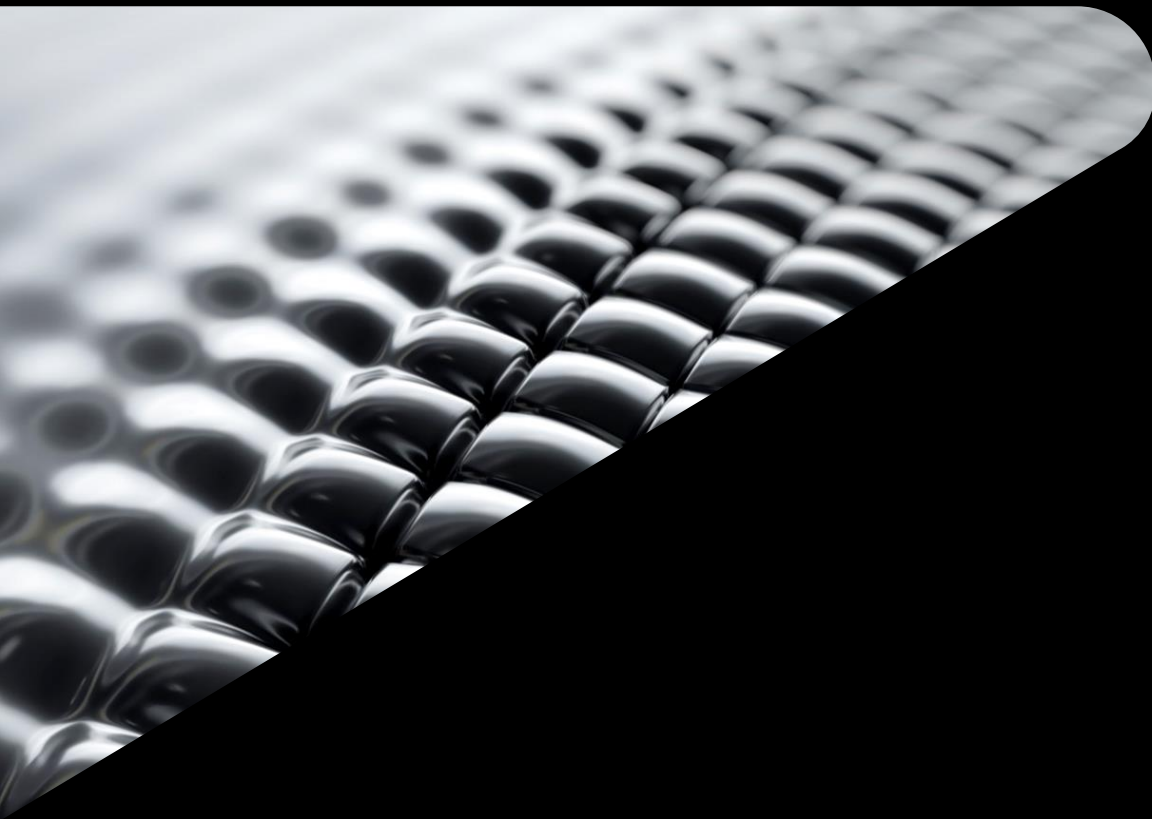
# Challenges

# Challenges

It isn't always easy to get along

- Where to produce the documents
- Exchanging data
- Shared Reference Point





# Conclusions

# Questions?



Desirée Mackey, PE, SE  
[dmackey@geiconsultants.com](mailto:dmackey@geiconsultants.com)

Brian Hailey, PE  
[bhailey@geiconsultants.com](mailto:bhailey@geiconsultants.com)