

Setting Up and Using Desktop Connector with BIM 360 Docs

Luciane Conceição Taylor

Technical Support Specialist, Autodesk



Welcome!





About the speaker

Luciane Conceição Taylor

- Architect and Urbanist
- 17 years in technical support
- 5 years working with BIM 360
- Brazilian living in the UK for 12 years
- Enjoys spending time with family and doing crafts
- Started with AutoCAD 10

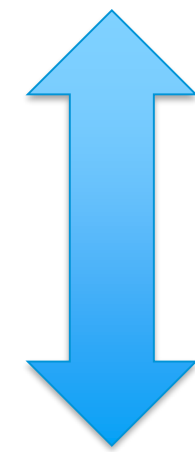
Learning Objectives

1. Manage construction documentation using Desktop Connector with BIM 360 Docs
2. Set up and use Desktop Connector
3. Troubleshoot most common issues
4. Best practices and recommendations

Q&A

What is Desktop Connector?

Autodesk cloud services



Your construction
documents

Your computer

Autodesk cloud services



BIM 360 Team



Autodesk Drive



Fusion Team



BIM 360 Docs

Desktop Connector for BIM 360

B AUTODESK®
BIM 360® DOCS

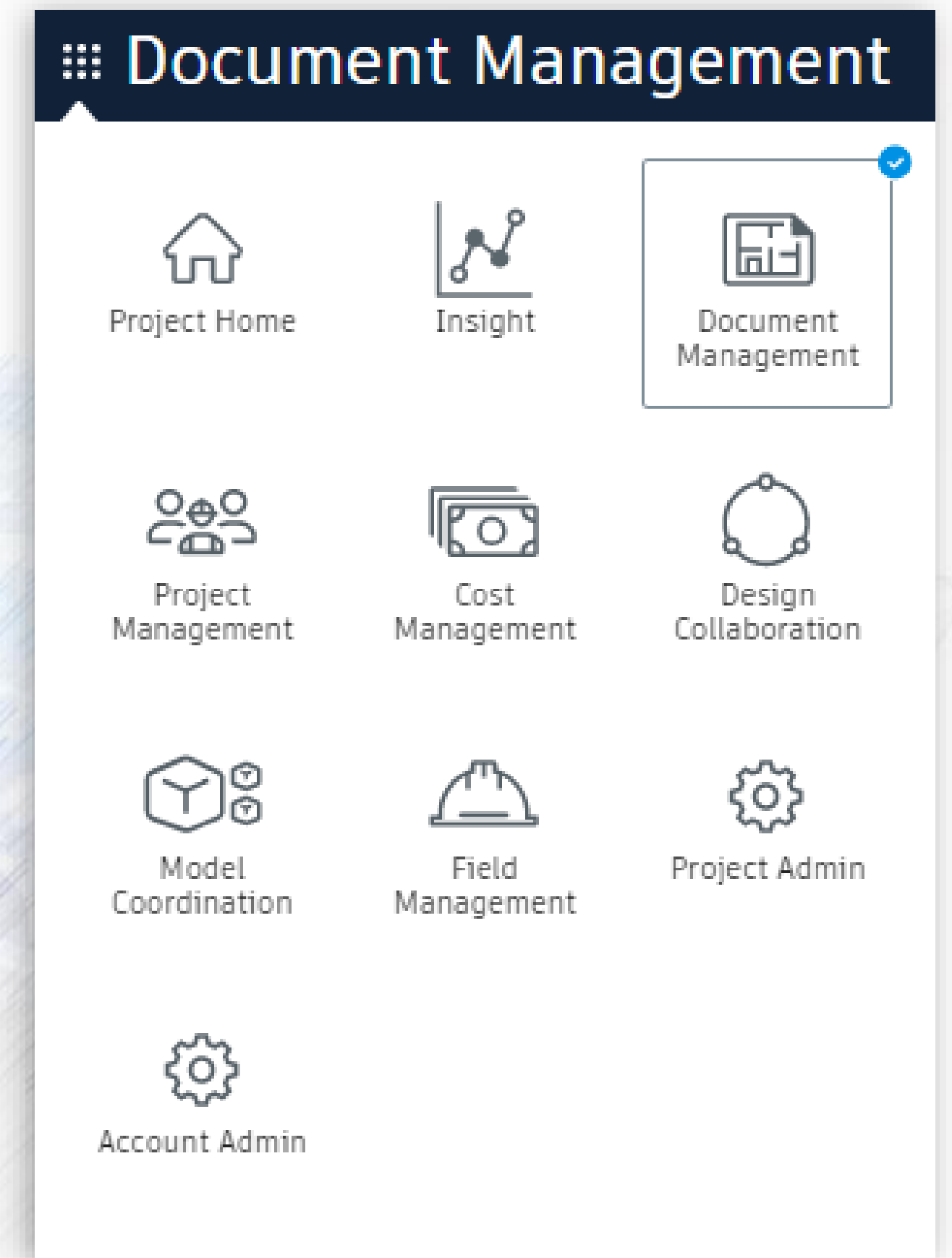


A AUTODESK®

BIM 360 Docs

In Document Management you can:

- Upload, download, and share a variety of file types
- Assign user permissions to folders
- Create markups, issues, reviews and transmittals
- View and compare models
- Work at construction site with BIM 360 mobile app
- Use as data source for other BIM 360 modules



What does Desktop Connector do?

Upload, download and open documents

Create, rename and delete project folders

Lock, delete and work with documents offline

Work with issues in Navisworks

Share models from authoring applications



Why use Desktop Connector?



What do you need?

Windows OS

+

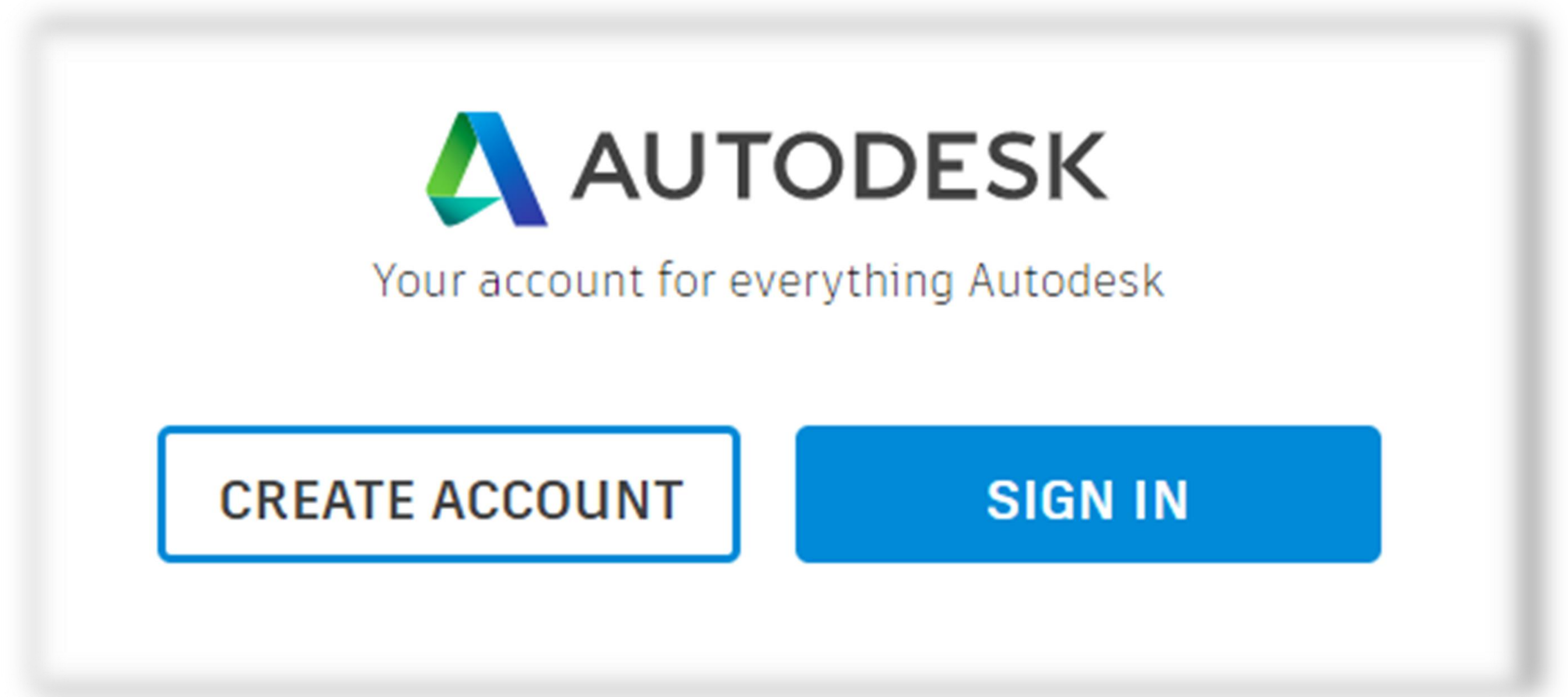
Internet connection



What do you need?

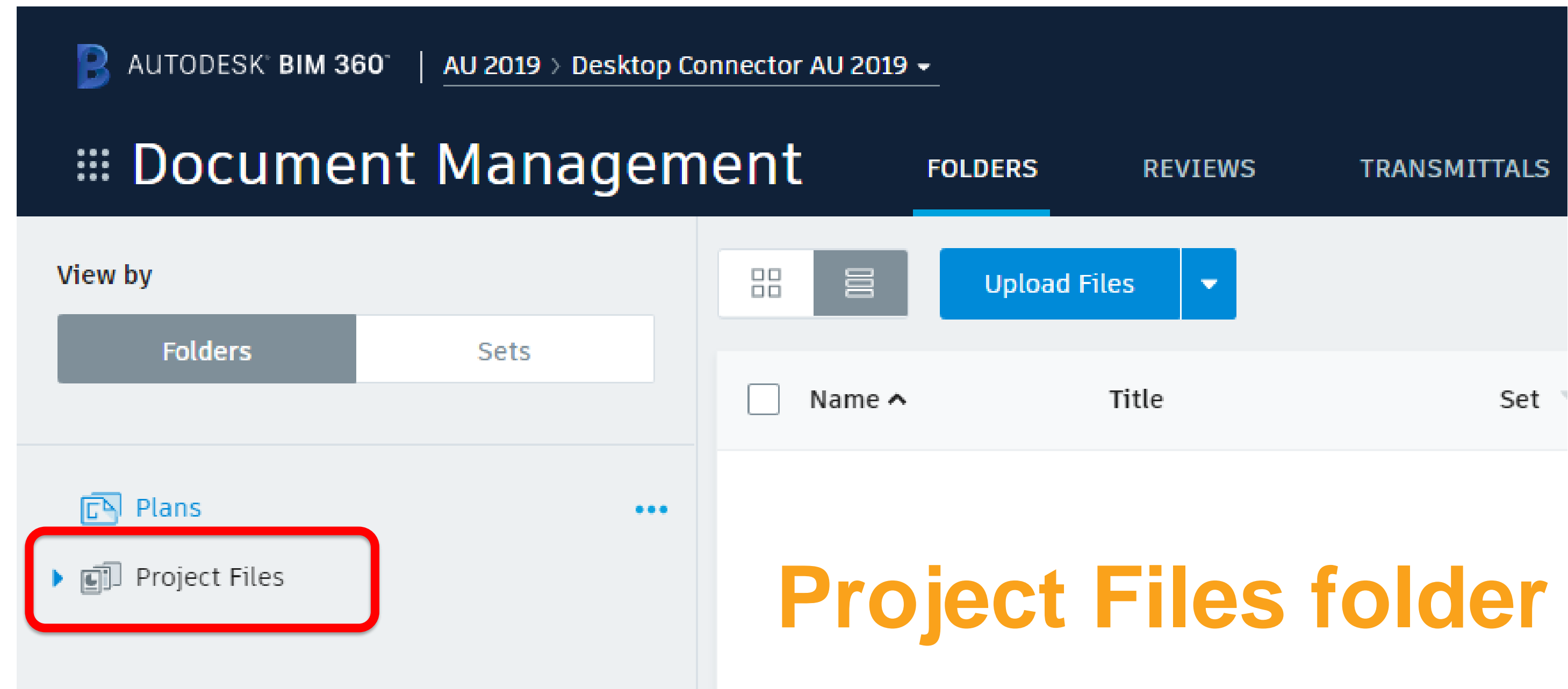
Autodesk account

<https://accounts.autodesk.com>



What do you need?

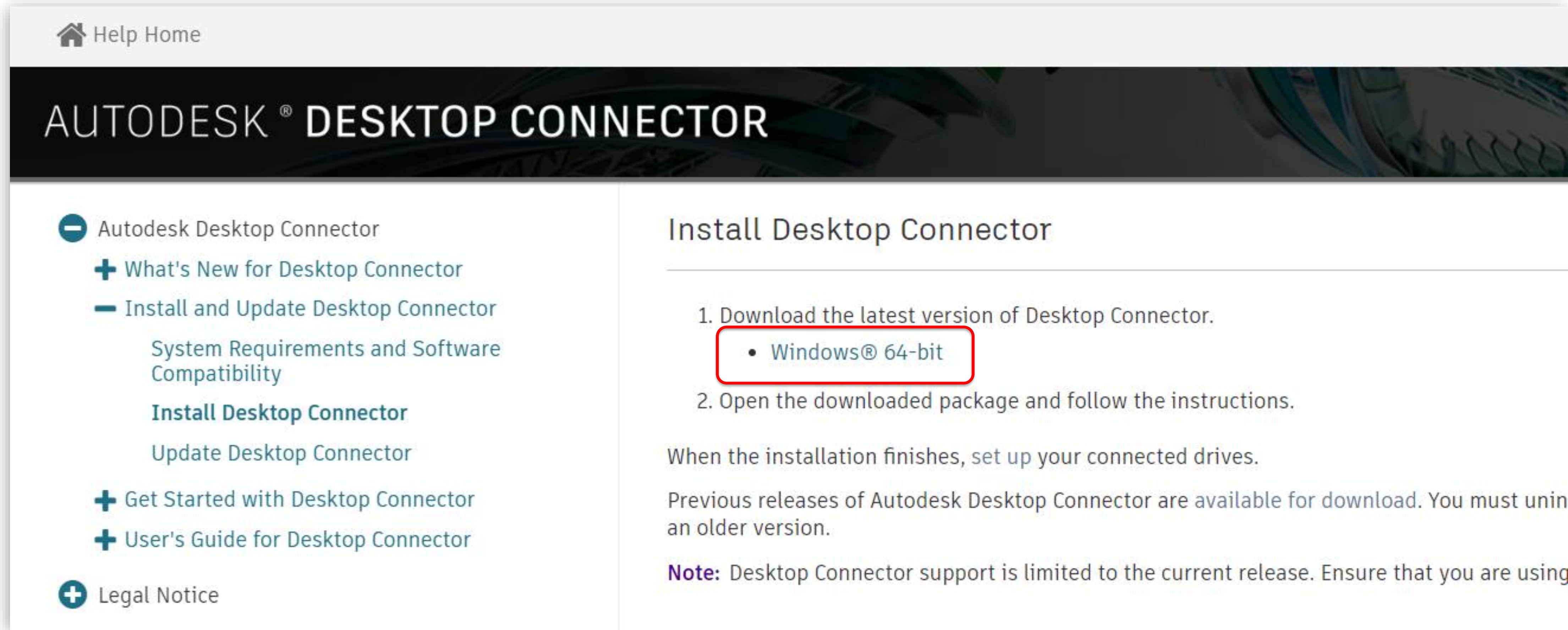
Access to a
BIM 360 Docs project



What do you need?



Install the Desktop Connector application

A screenshot of the Autodesk Desktop Connector help page. The page has a dark header with the Autodesk logo and the product name. A left sidebar contains a navigation menu with expandable sections. The main content area is titled 'Install Desktop Connector' and contains a numbered list of steps. The first step, 'Download the latest version of Desktop Connector', has a sub-list with 'Windows® 64-bit' highlighted by a red box. Below the list, there is a paragraph about setting up drives and another about previous releases. A note at the bottom states that support is limited to the current release.

Home Help Home

AUTODESK® DESKTOP CONNECTOR

- Autodesk Desktop Connector
 - What's New for Desktop Connector
 - Install and Update Desktop Connector
 - System Requirements and Software Compatibility
 - Install Desktop Connector**
 - Update Desktop Connector
 - Get Started with Desktop Connector
 - User's Guide for Desktop Connector
- Legal Notice

Install Desktop Connector

- Download the latest version of Desktop Connector.
 - Windows® 64-bit
- Open the downloaded package and follow the instructions.

When the installation finishes, set up your connected drives.

Previous releases of Autodesk Desktop Connector are available for download. You must uninstall an older version.

Note: Desktop Connector support is limited to the current release. Ensure that you are using

What do you need?

No additional fee
required



Set up and use Desktop Connector



Setting up Desktop Connector

Set up Desktop Connector in 3 simple steps

 1 Check:

- System requirements
- User permissions
- Free space
- Windows updates

Setting up Desktop Connector

Set up Desktop Connector in 3 simple steps



Install:

- Download installation file
- Run the installer
- Watch the icon appear in the tray

Setting up Desktop Connector

Set up Desktop Connector in 3 simple steps

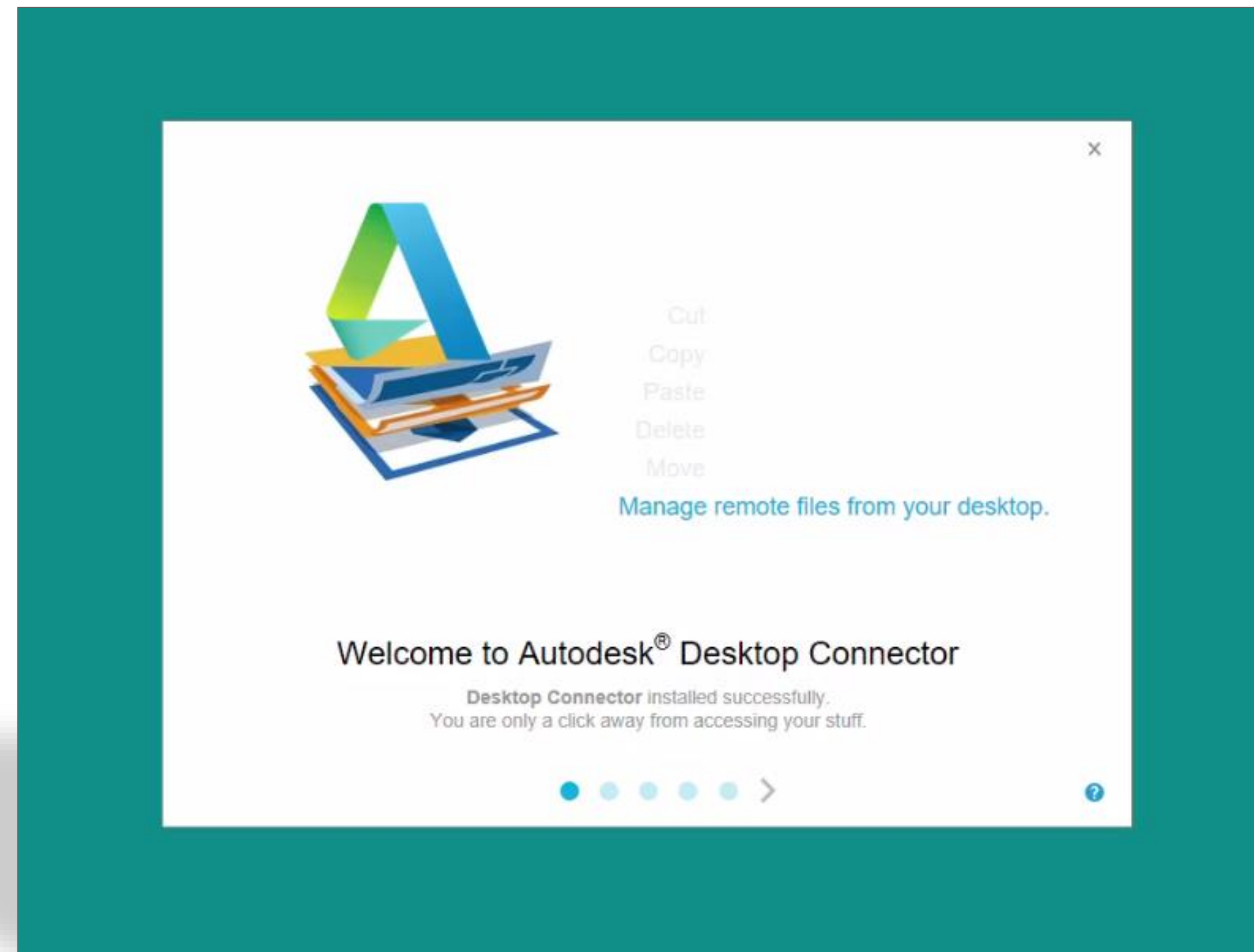


Sign in:

- Start Desktop Connector
- Use your Autodesk account details
- The BIM 360 drive appears
- Expand BIM 360 to see cloud stored data

Setting up Desktop Connector

Downloading, installing and starting Desktop Connector

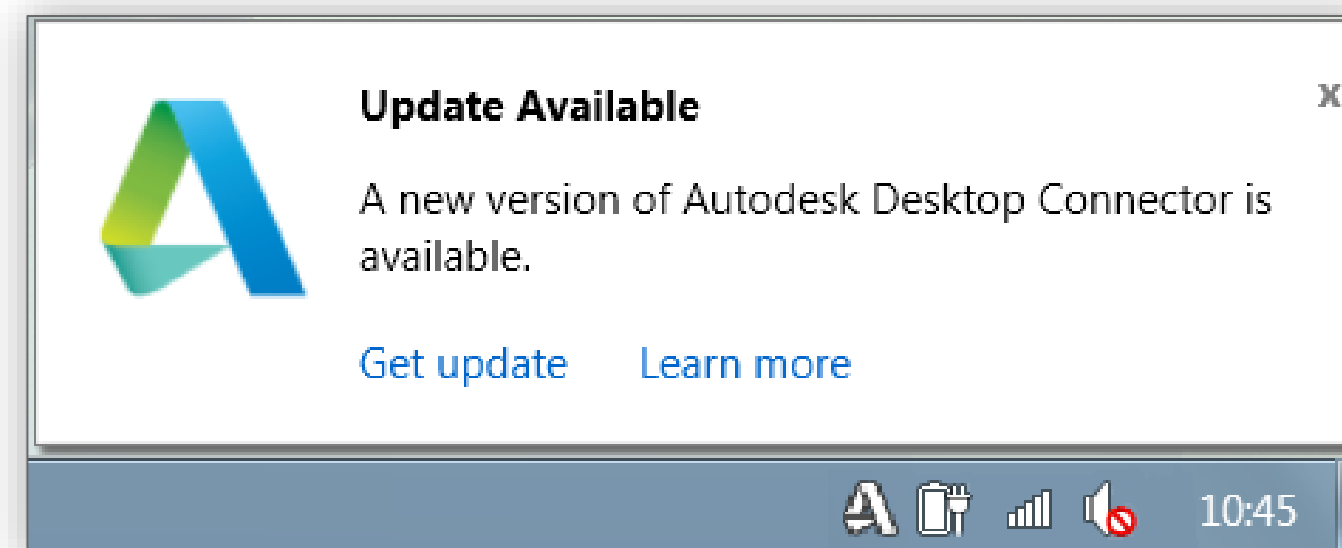


Setting up Desktop Connector



Updating Desktop Connector

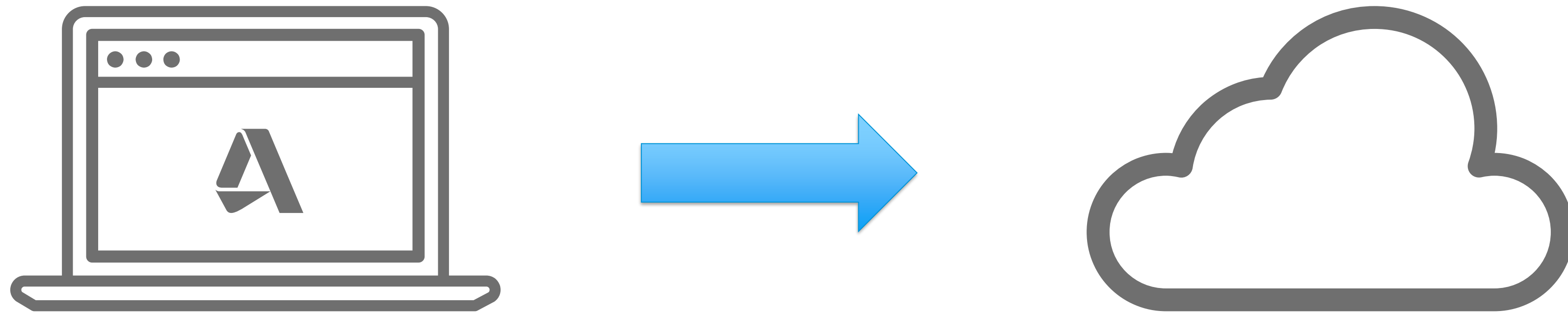
- Updates are released regularly
- User is notified when a new release is available



- Admin permissions are required to install

How does Desktop Connector work?

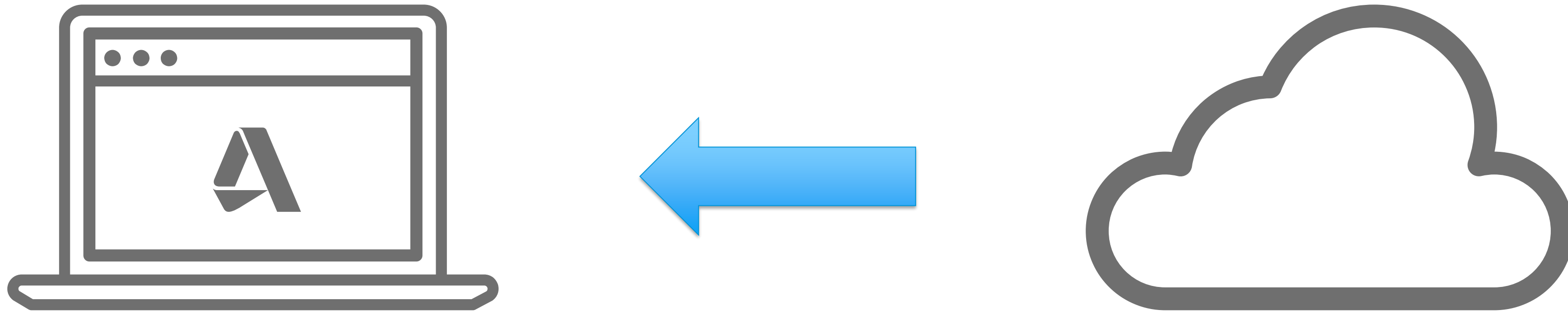
From your computer to BIM 360 Docs



Files and folders are uploaded to Document Management

How does Desktop Connector work?

From BIM 360 Docs to your computer

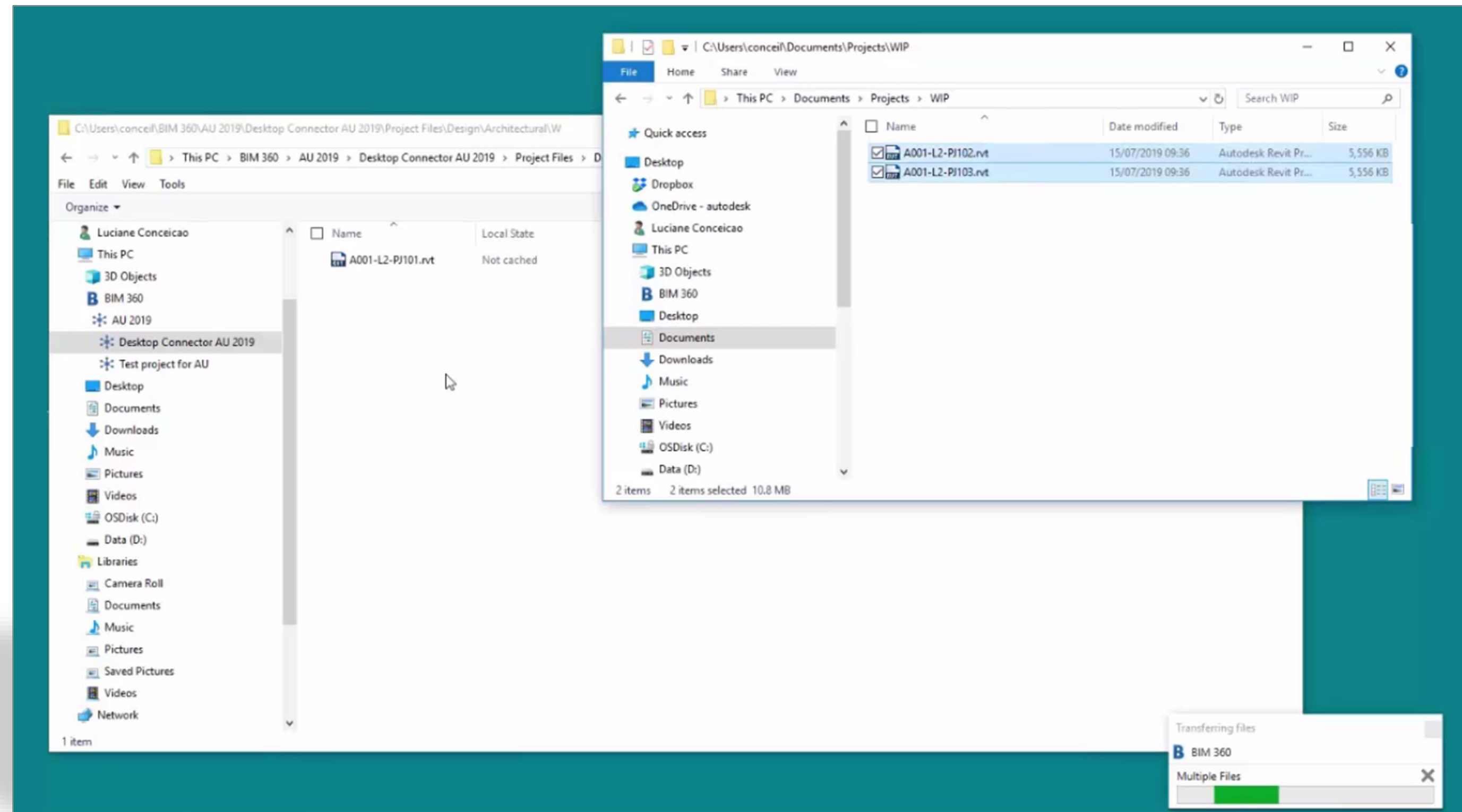


A mirror of Document Management is created on your PC

According to your permissions in the project

How does Desktop Connector work?

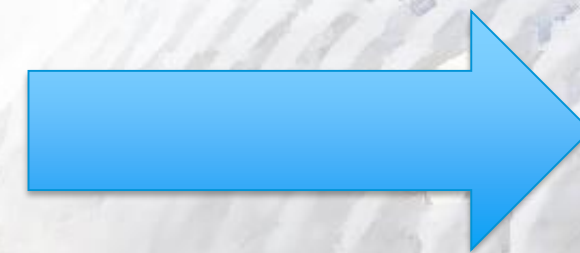
Uploading, deleting and downloading data



How does Desktop Connector work?

Desktop Connector and Revit

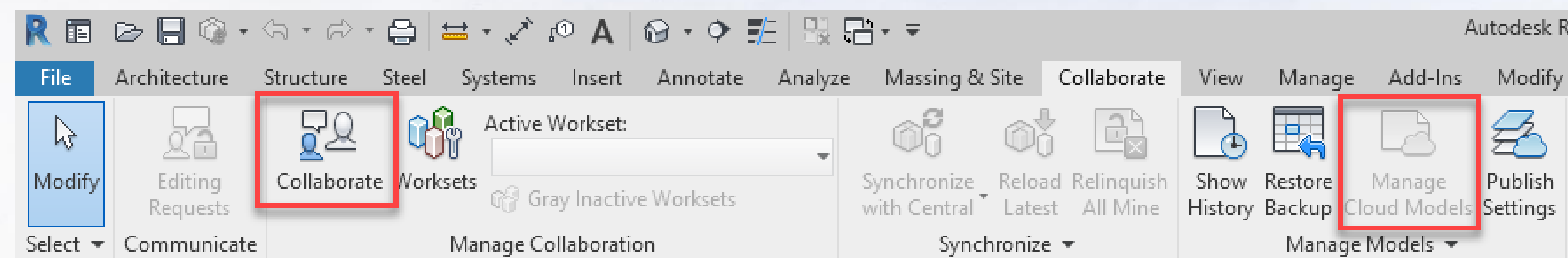
Revit



Document Management

Three upload methods:

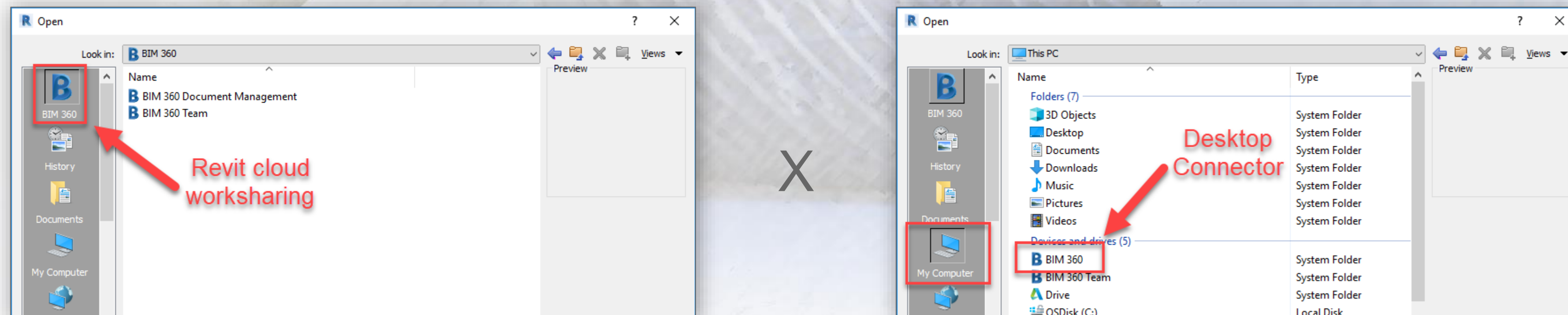
- Web browser
- Desktop Connector
- Collaboration from Revit – not for Desktop Connector workflow



How does Desktop Connector work?

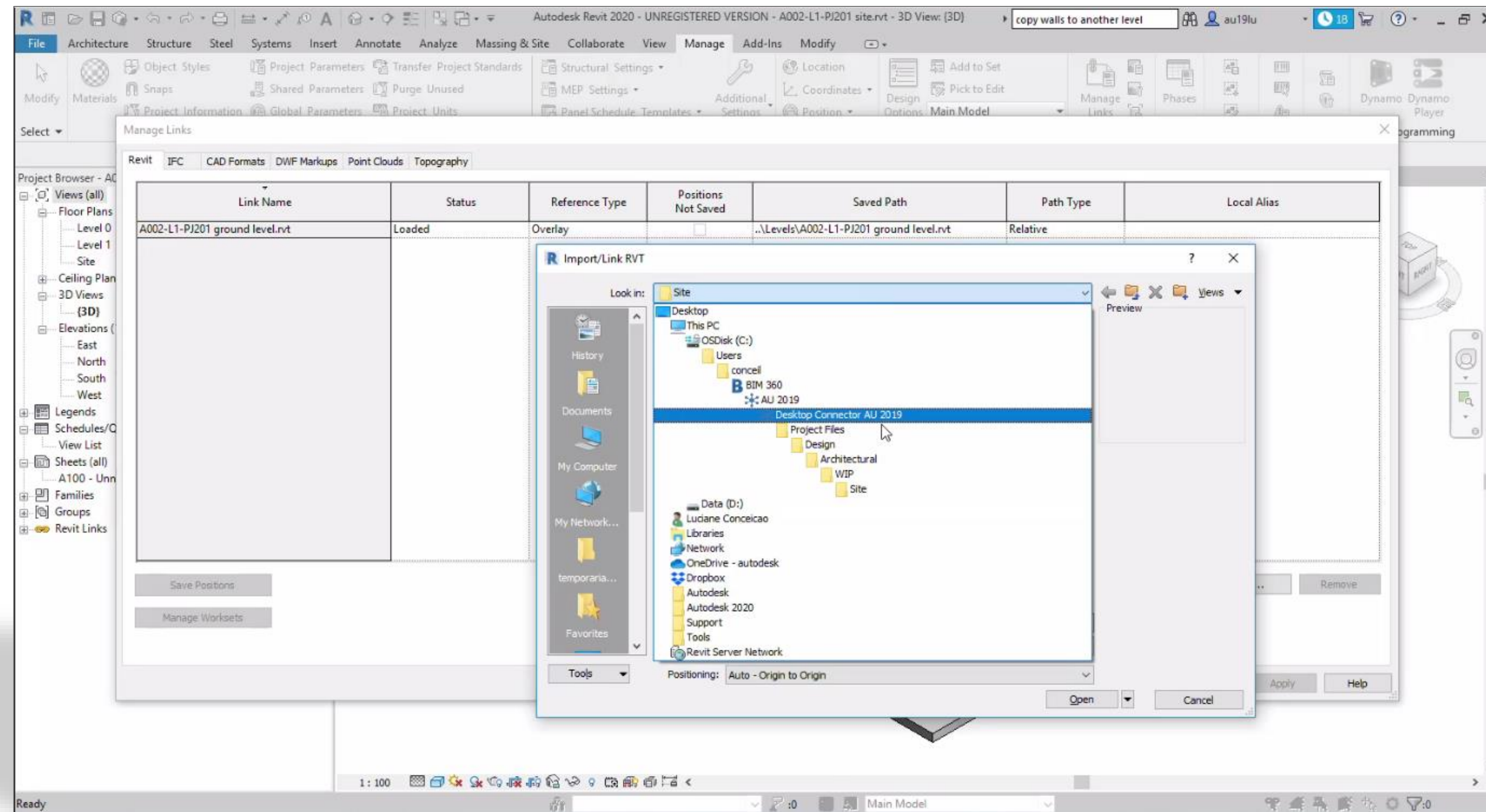
Working with Revit models via Desktop Connector

- All files should be in Document Management for collaboration
- Open models from the BIM 360 drive – watch out!



How does Desktop Connector work?

Working with Revit models and file linking



How does Desktop Connector work?

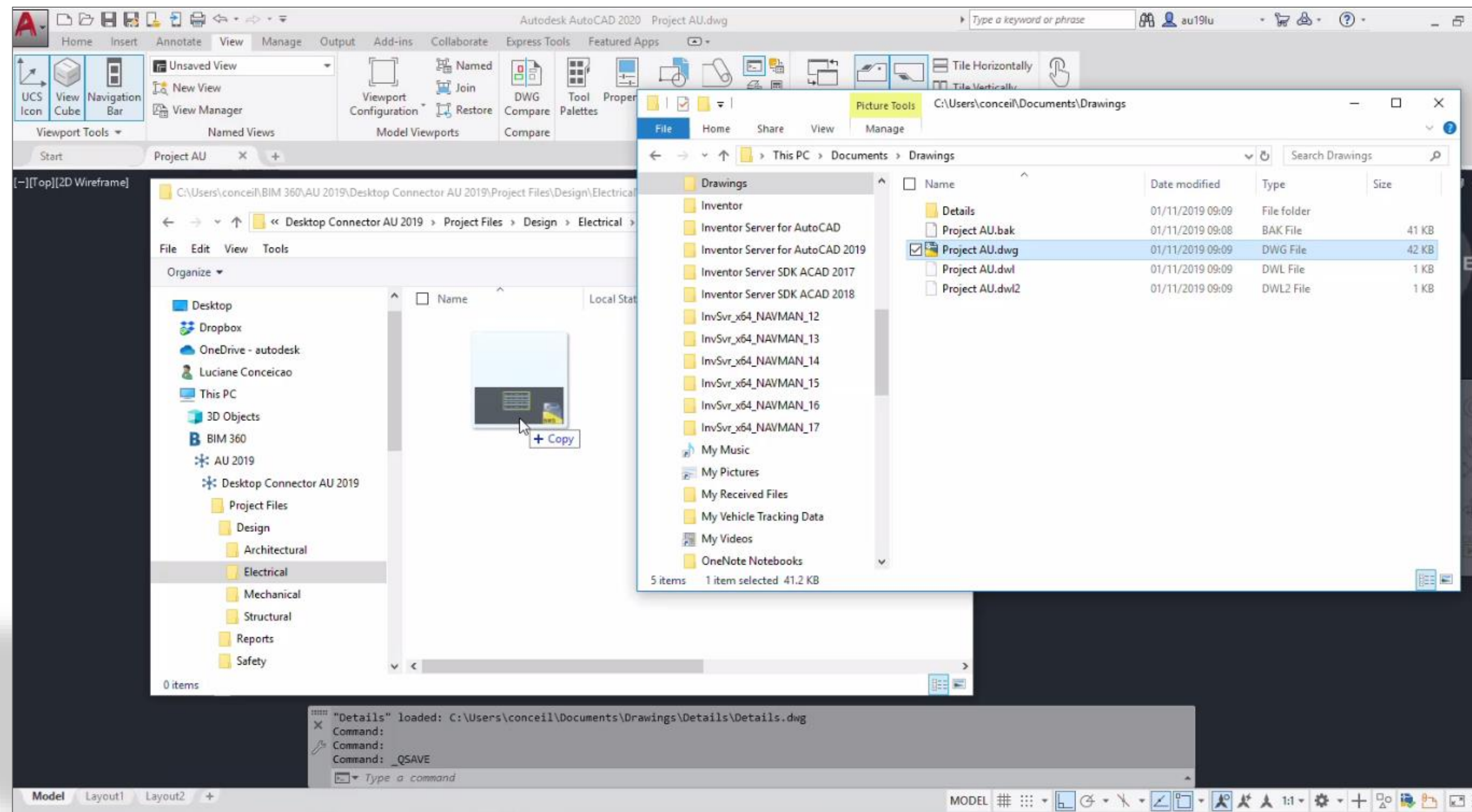
Desktop Connector and AutoCAD



- Saving a parent file in BIM 360 drive also uploads XREFs and their folders
- Keeps track of new file versions

How does Desktop Connector work?

Working with DWGs and XREFs from AutoCAD to BIM 360 Docs



How does Desktop Connector work?

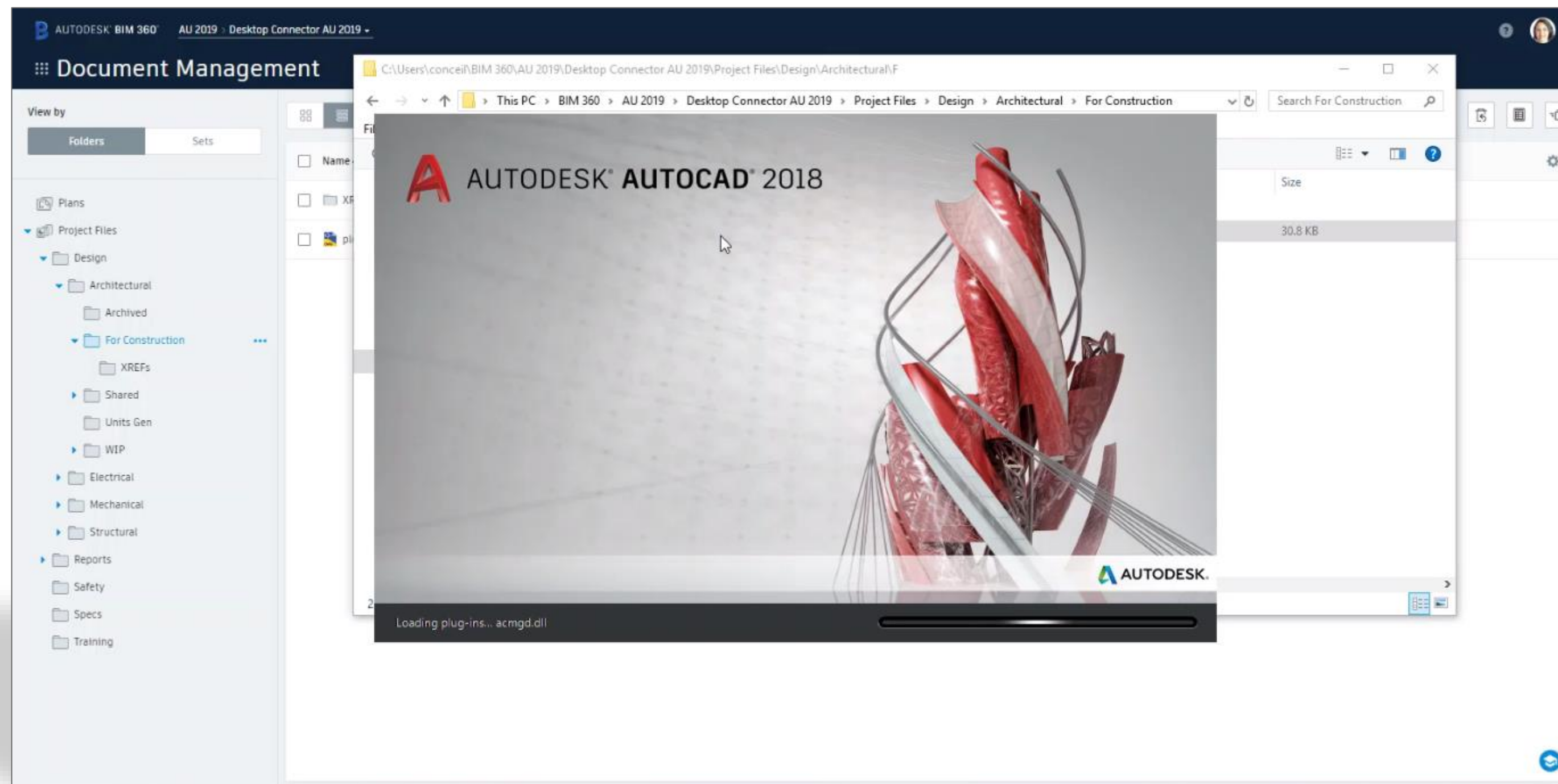
Desktop Connector and AutoCAD



- Opening a parent file from the BIM 360 drive also opens XREFs
- Links are maintained even if the XREFs are renamed or moved
- Only DWG files are officially supported for file linking

How does Desktop Connector work?

Working with DWGs and XREFs from BIM 360 Docs to AutoCAD



How does Desktop Connector work?

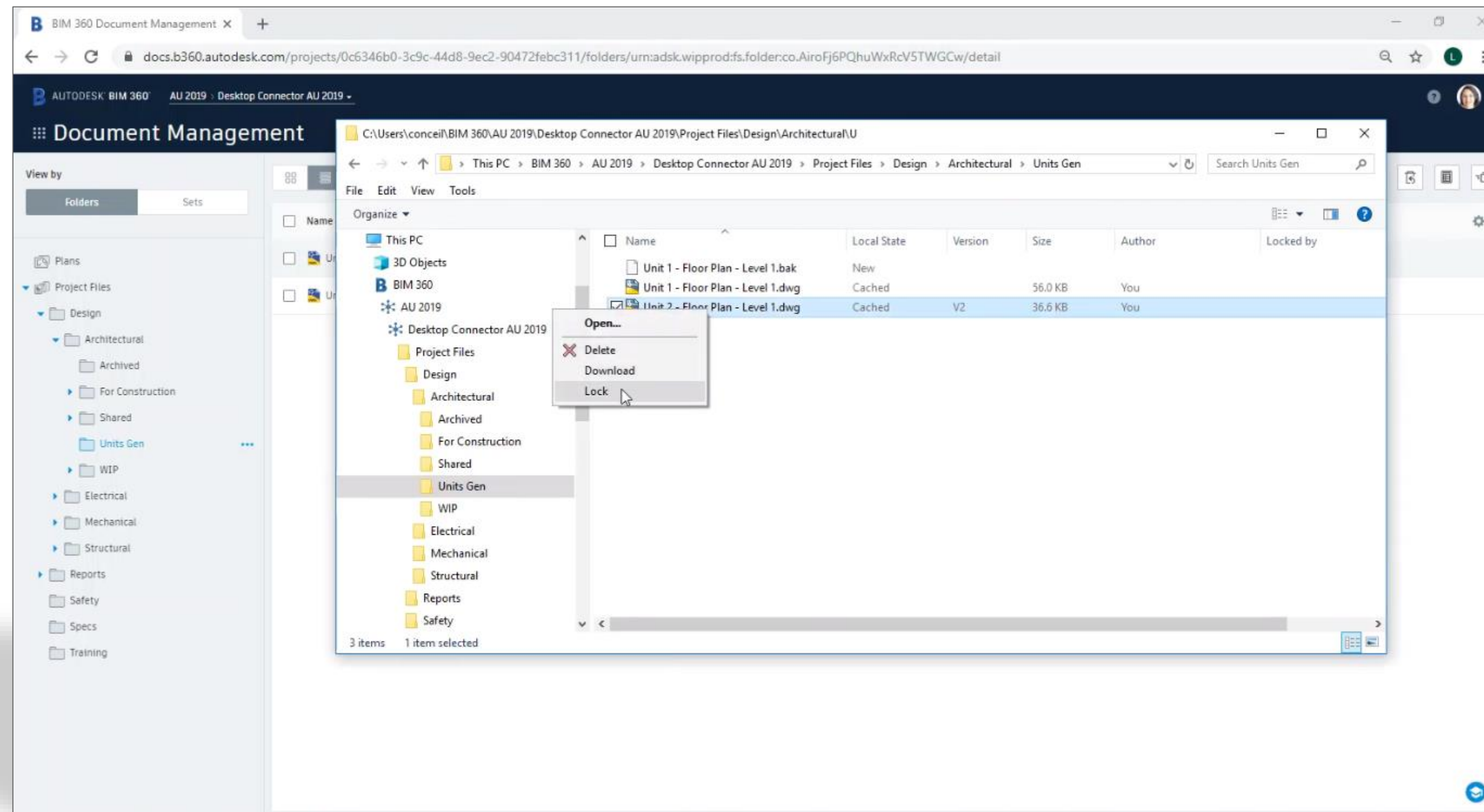


File locking

- Lock files from the BIM 360 drive
- Apply action when lock is removed
- **View/Upload + Edit + Control** permission can unlock files

How does Desktop Connector work?

File locking



How does Desktop Connector work?

Working offline

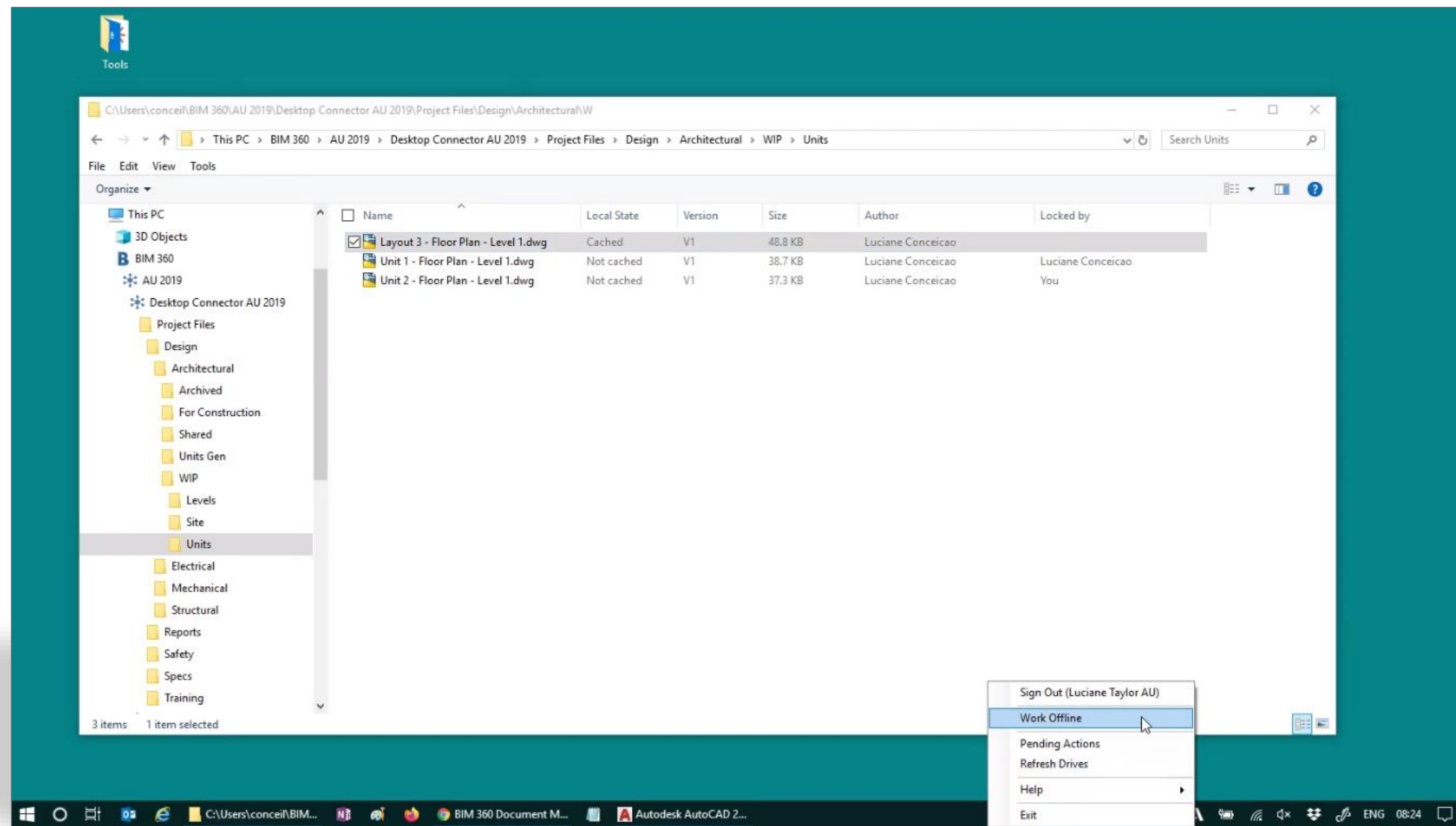
- Work with files when not connected and sync changes later

Download > Work offline > Edit > Save > Go online > Sync

- Desktop Connector uploads updated files to BIM 360 Docs once back online

How does Desktop Connector work?

Working offline



How does Desktop Connector work?

Deleting local files

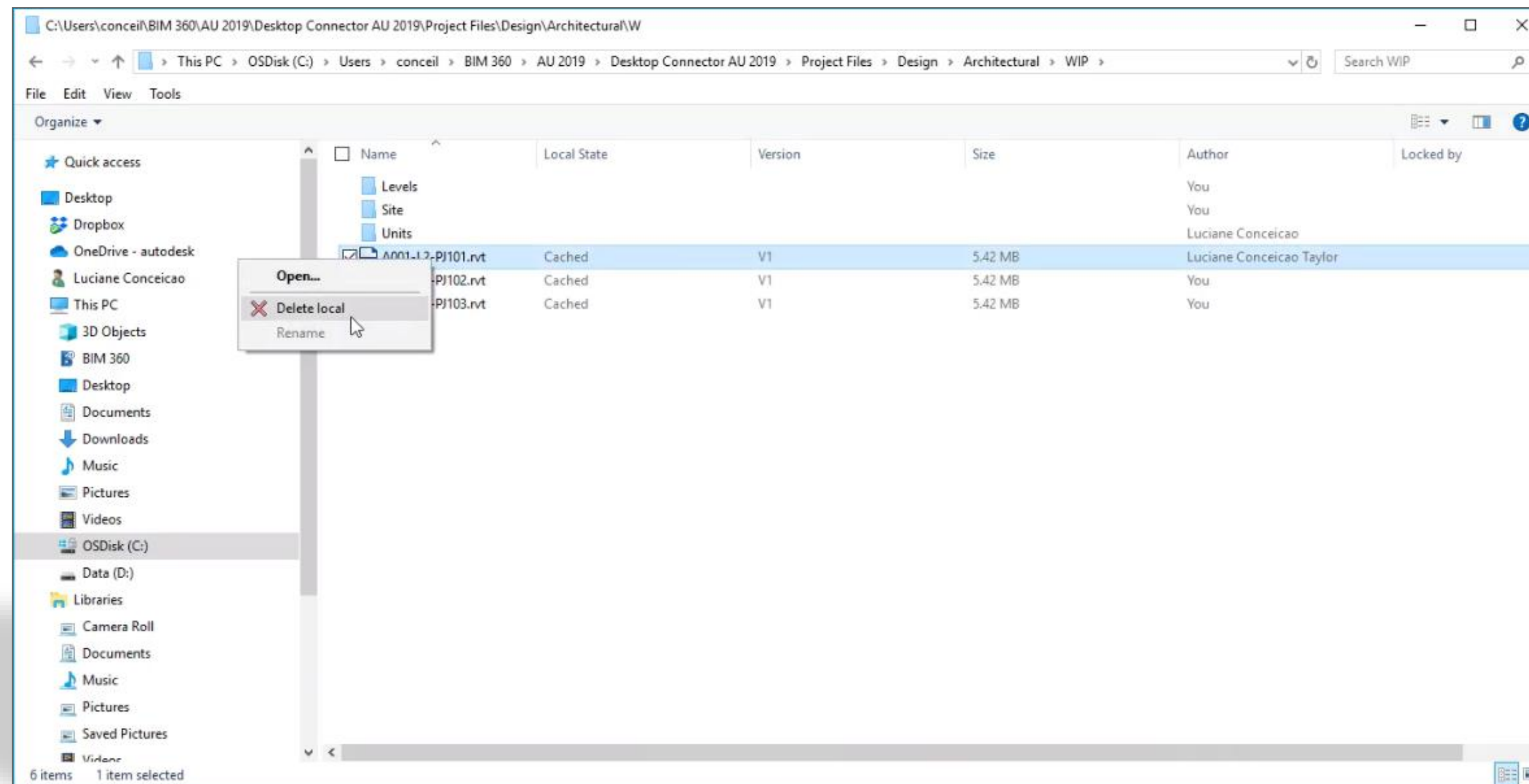
- Delete files to free up space in disk
- Troubleshooting

Work offline > Select file(s) > Delete local > Go online

- Files available in Document Management will be “Not cached”

How does Desktop Connector work?

Deleting local files



How does Desktop Connector work?



Working with BIM 360 Issues in Navisworks

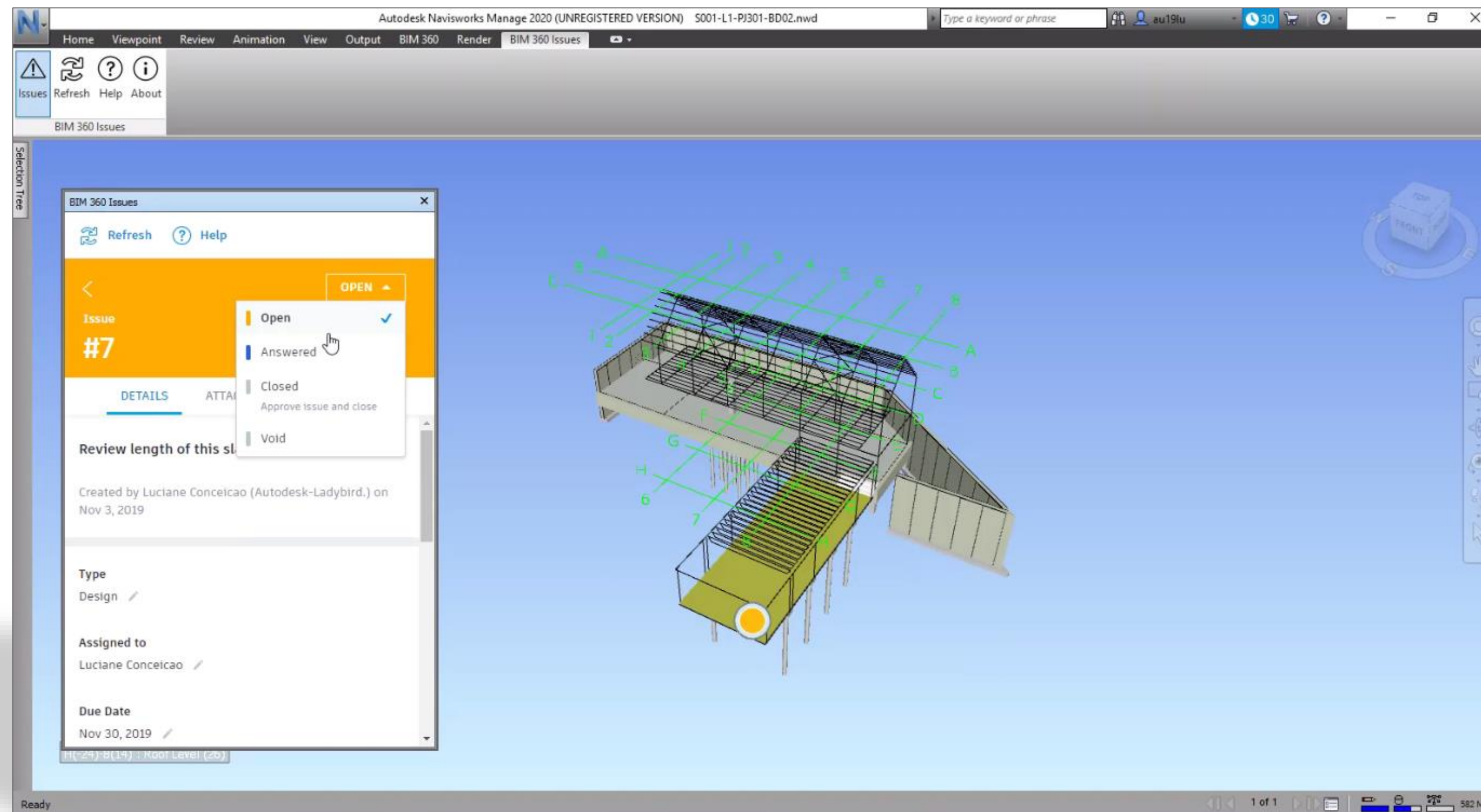
- [BIM 360 Issues](#) free app
- NWD files stored in Document Management

Navisworks ↔ Issues ↔ Document Management

- Navisworks Manage and Simulate versions 2019 and 2020

How does Desktop Connector work?

Working with BIM 360 Issues in Navisworks



How does Desktop Connector work?



Sharing data from Civil 3D to BIM 360

- Access your BIM 360 projects from the Start page
- Publish surfaces to Document Management
 - Files are available for linking via BIM 360 drive
- Collaboration for Civil 3D – with a BIM 360 Design license

Troubleshooting most common issues



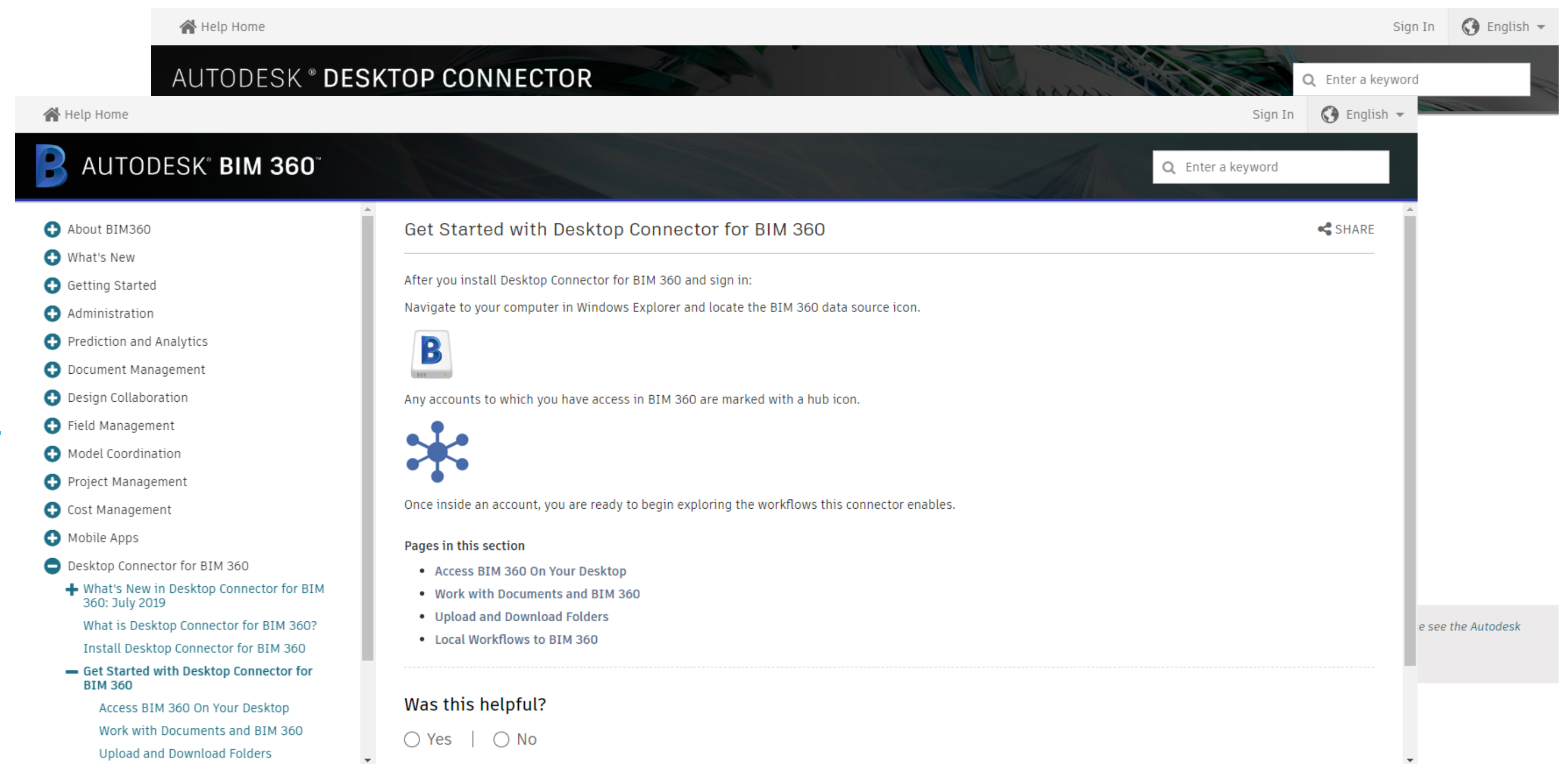
Troubleshooting most common issues

First step... review the Help files

Two Help files:

[Desktop Connector](#)

[Desktop Connector for BIM 360](#)



Troubleshooting most common issues



Resolving specific issues:

- Installation, signing in, data not available

Windows
permission

Connection

Conflict with
other applications

Project
permission

Refresh
Drives

Troubleshooting most common issues

Resolving specific issues:

- Uploading files

Upload via web

Close authoring
application

Unsupported
file format

Long path

Corrupted file

Troubleshooting most common issues



Resolving specific issues:

- Downloading and opening files

Free space

Project
permission

Caching

Still processing

Linked files not
in project

Troubleshooting most common issues



Resolving specific issues:

- File locking

Revit cloud
workshared file

Already
locked

Troubleshooting most common issues



Resolving specific issues:

- File versioning

Correct file
and location

Restart
authoring
application

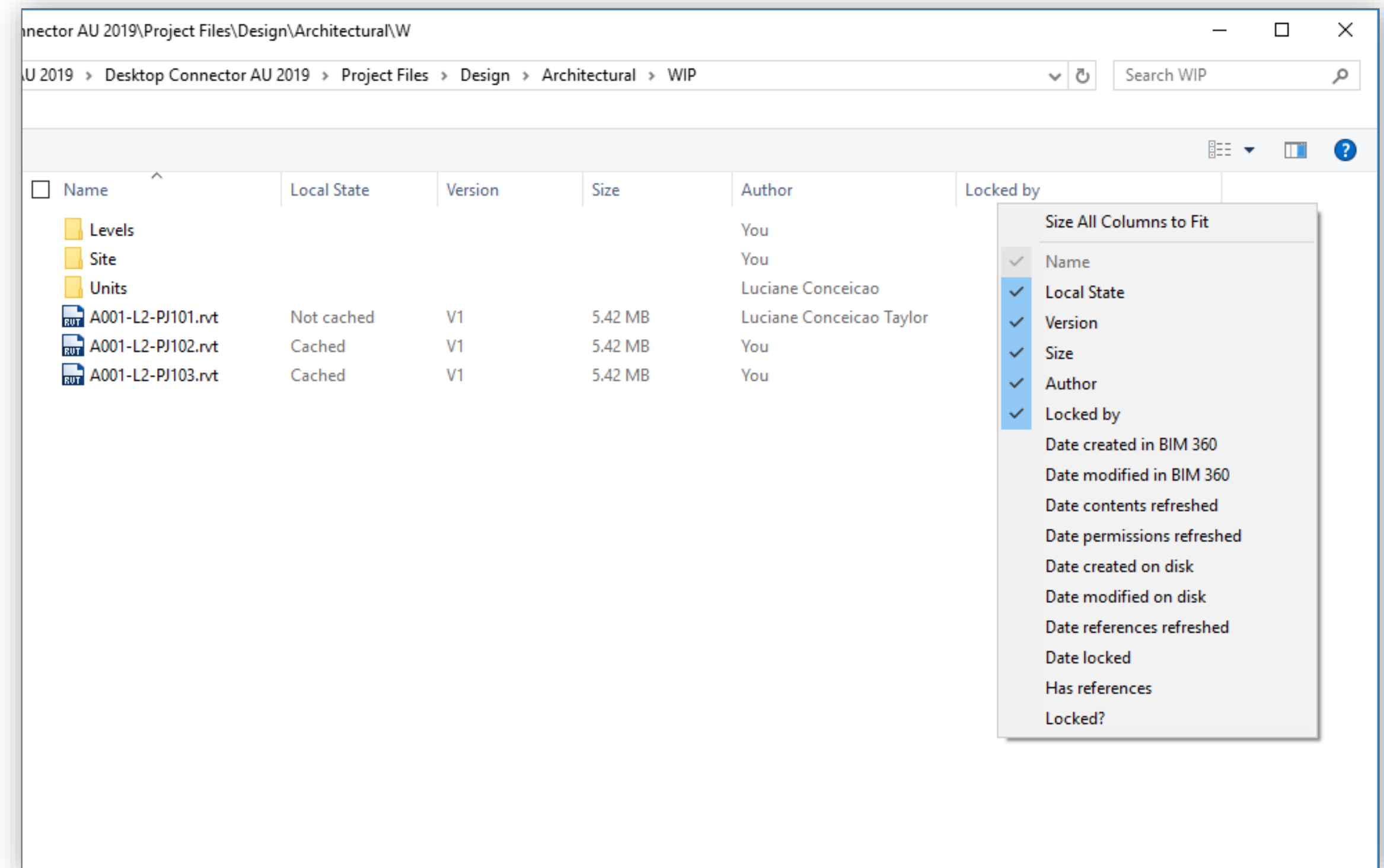
Caching

Troubleshooting most common issues

✂ General troubleshooting techniques

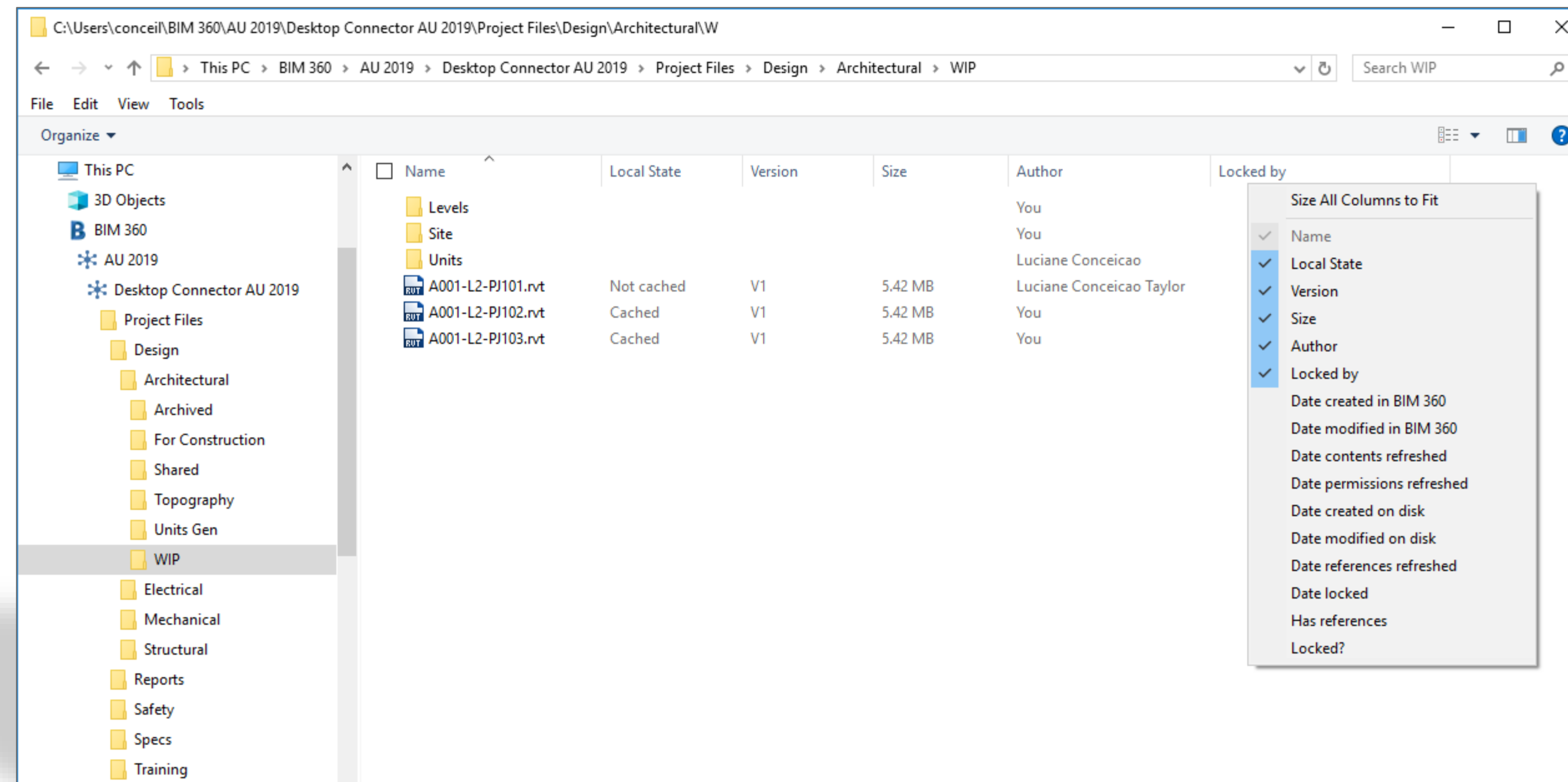
- Review file properties

Enable Desktop Connector
custom columns in File Explorer



Troubleshooting most common issues

Reviewing file properties



Troubleshooting most common issues

✂ General troubleshooting techniques

- Check file state in local drive

 New

 Cached

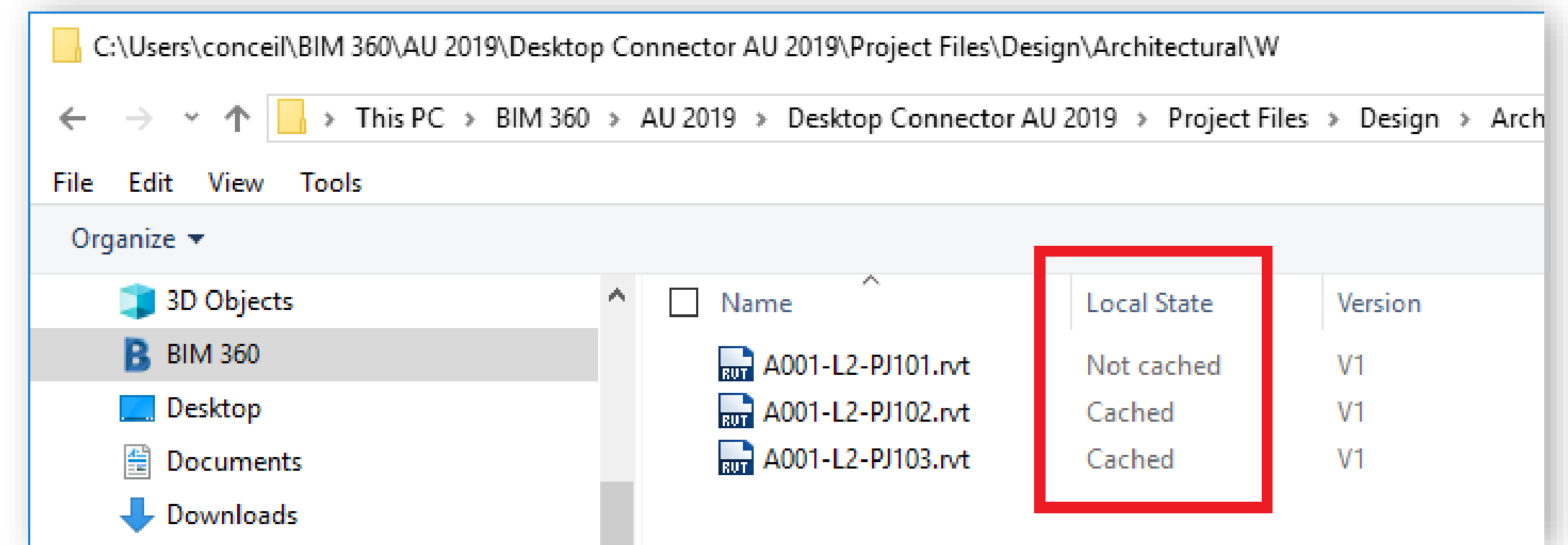
 Not Cached

 Modified

 Stale

 Conflict

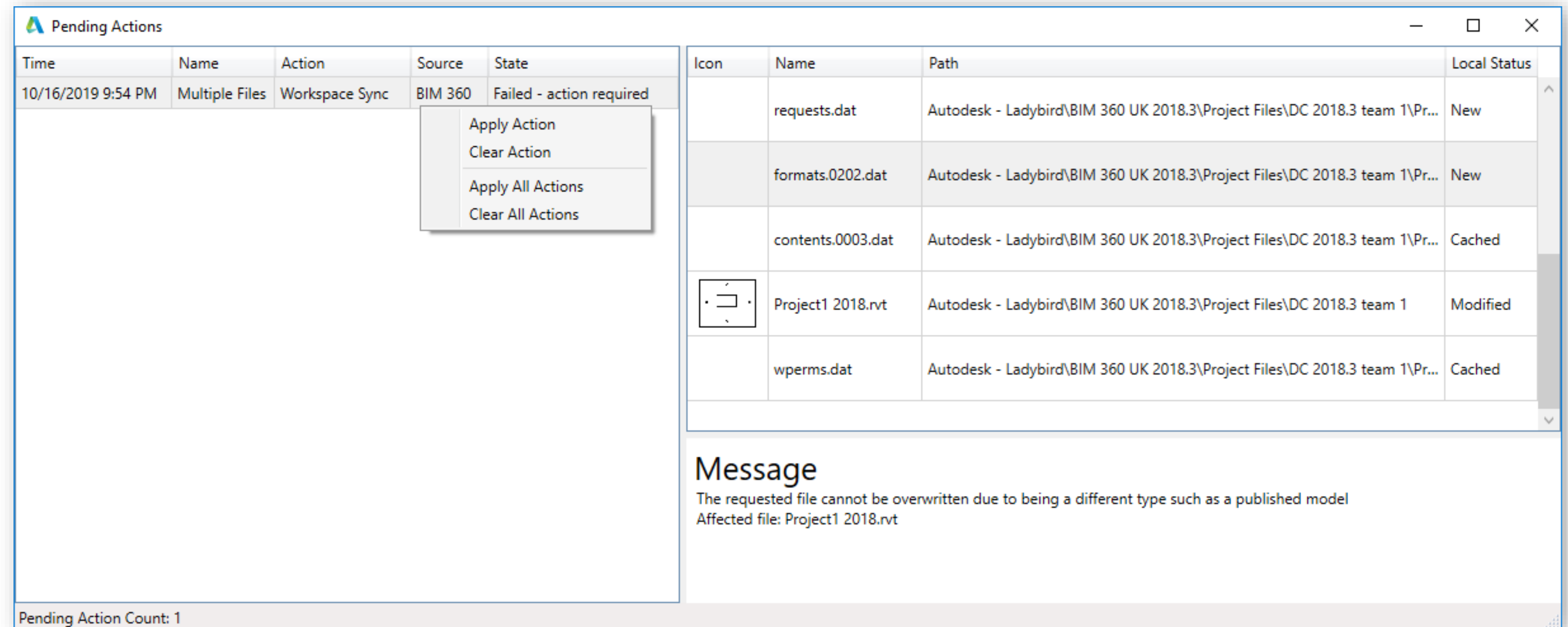
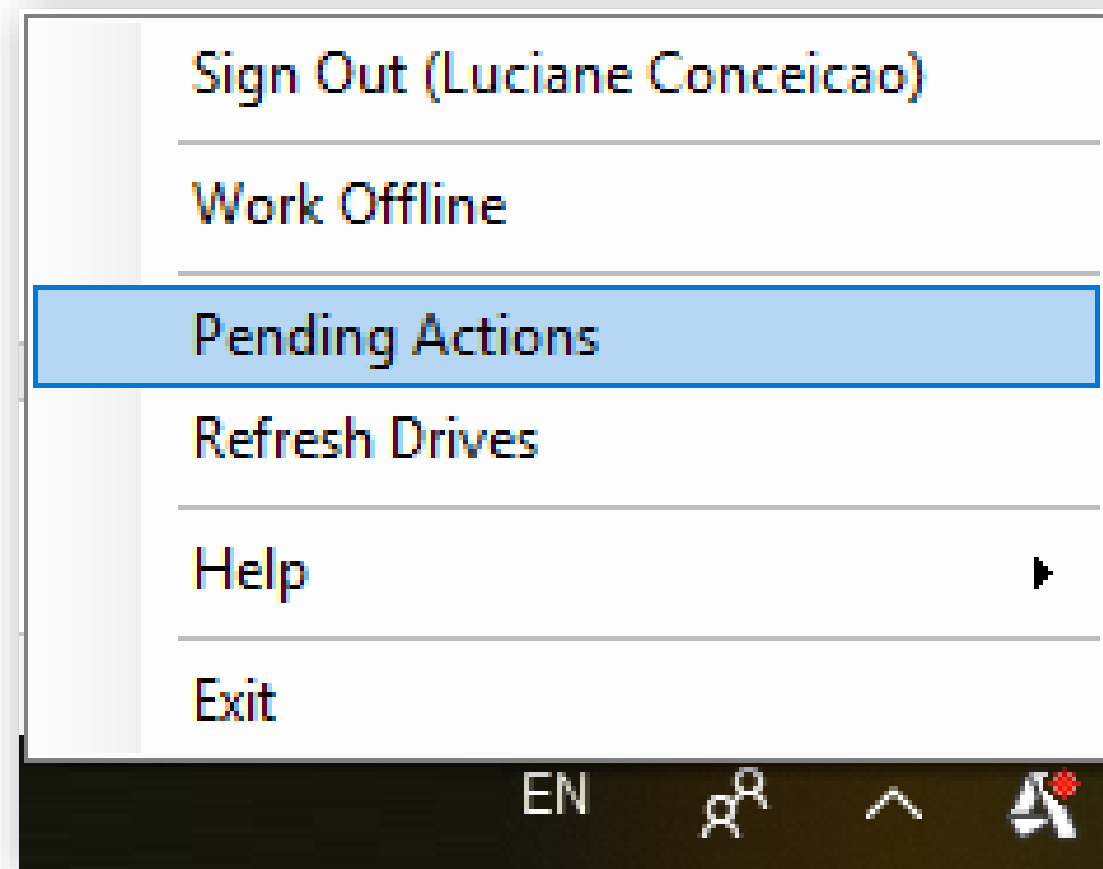
 Error



Troubleshooting most common issues

✂ General troubleshooting techniques

- Verify pending actions



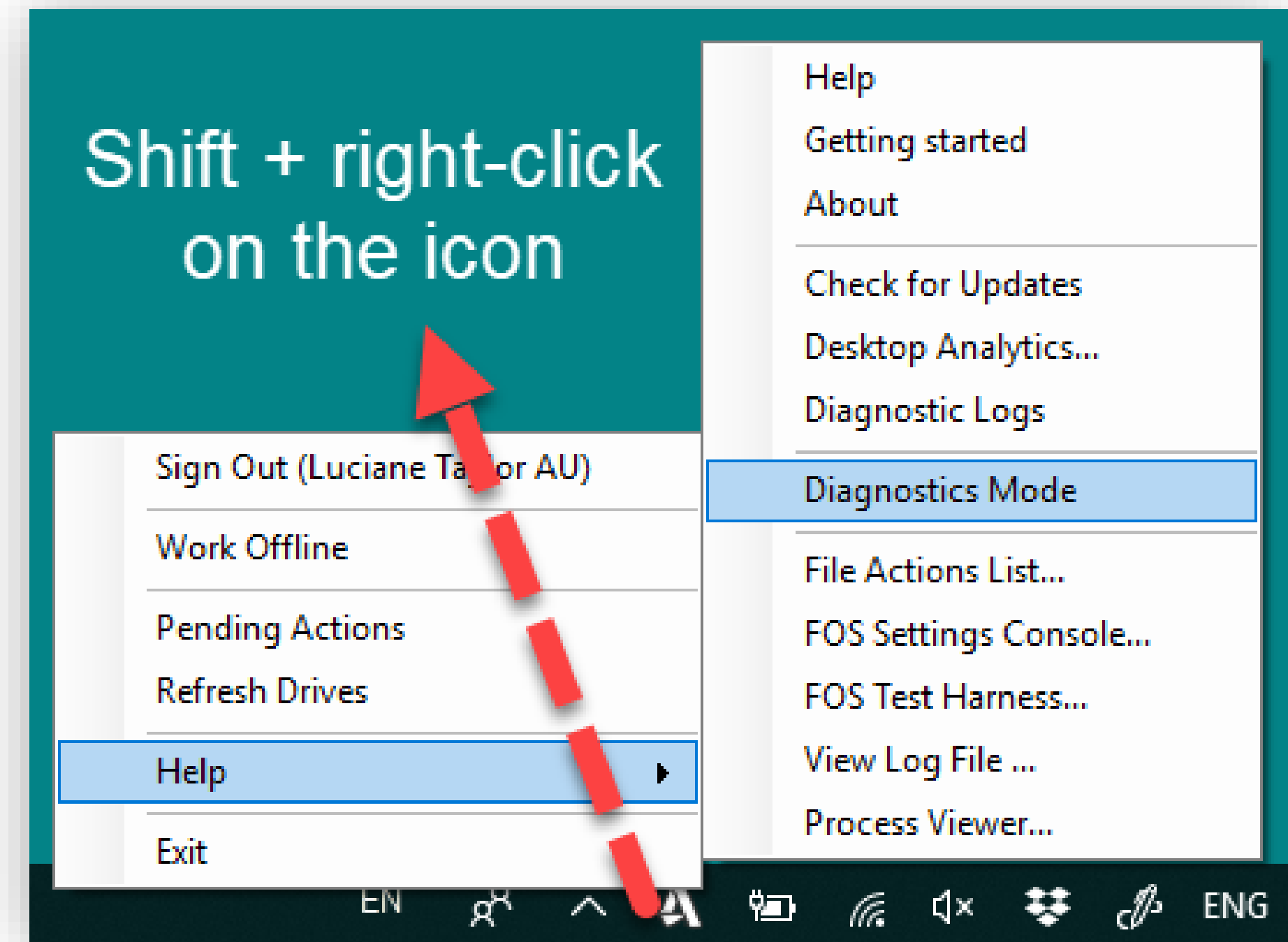
Troubleshooting most common issues

✂ General troubleshooting techniques

- Generate and review the diagnostic logs

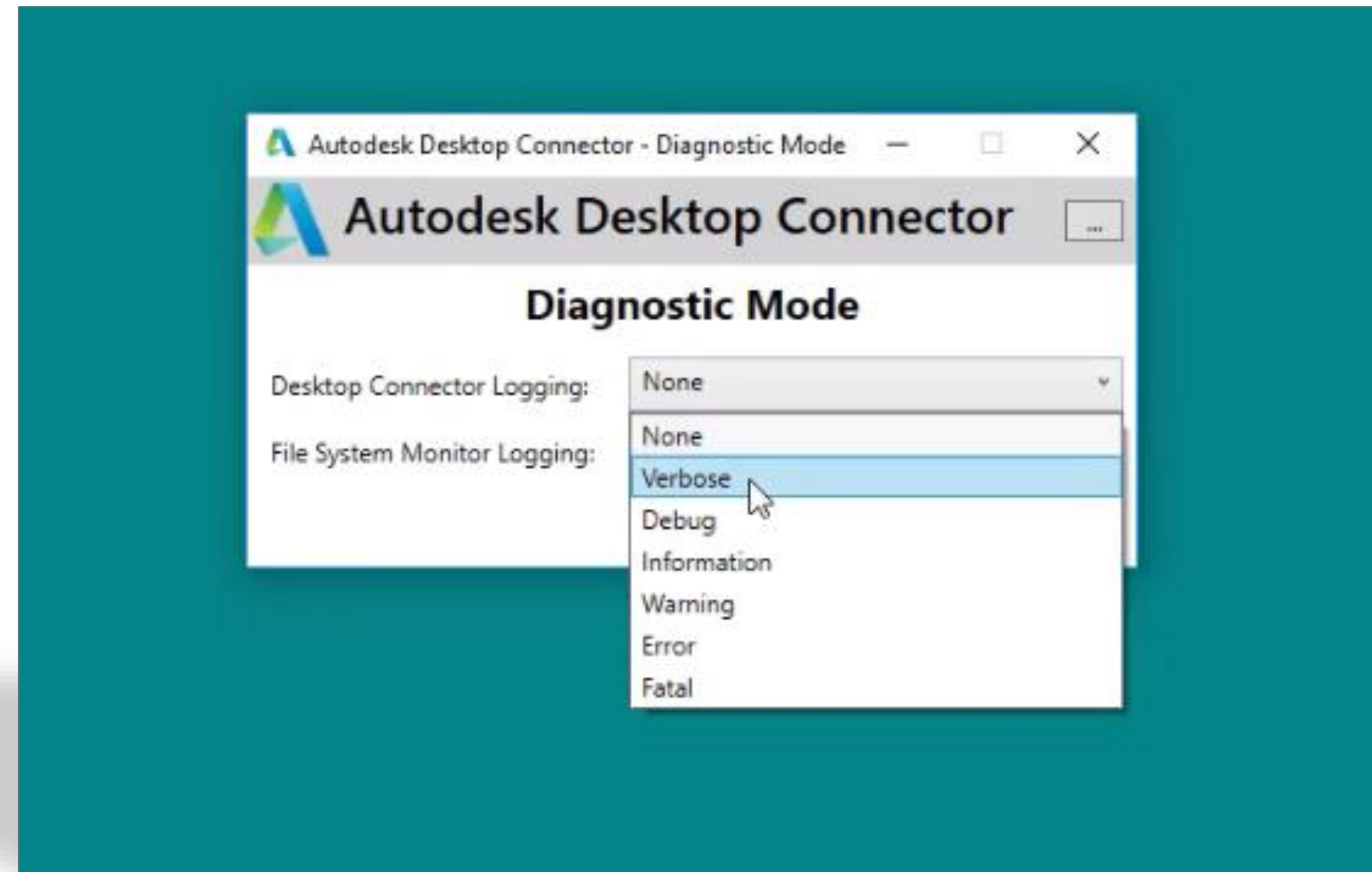
Use Shift + right-click to access diagnostic mode options

If set to Verbose, reset after use



Troubleshooting most common issues

Diagnostics log




Troubleshooting most common issues



General troubleshooting techniques

- Review file properties and state in local drive
- Verify pending actions
- Generate and review the diagnostic logs
- Sign out, update, reinstall or downgrade
- Review connectivity - port range 51001 to 51010
- [Health dashboard](#)

Troubleshooting most common issues

-  Known issues and limitations
- BIM 360 Docs limitations & file formats
 - Microsoft characters limitation - 248 for Desktop Connector
 - Working with files and folders
 - Revit links from BIM 360 drive don't display in Docs
 - Cannot save Revit cloud workshared models
 - Multiple users

Best practices and recommendations

Your path to success



Best practices and recommendations



Plan ahead

- BIM 360 Docs project set up
- Link files from Document Management
- Lock files before working offline
- Link Revit workshared models to non-workshared file
- Communication
- Maintenance

For that extra help...

Autodesk Knowledge Network - [AKN](#)

[BIM 360 Forum](#)

[BIM 360 Ideas](#)

[Learn BIM 360](#)

[Contact Support](#) > Using my product

[Autodesk University Classes](#)

This class handout

And a reminder...

Regular updates for BIM 360 and Desktop Connector

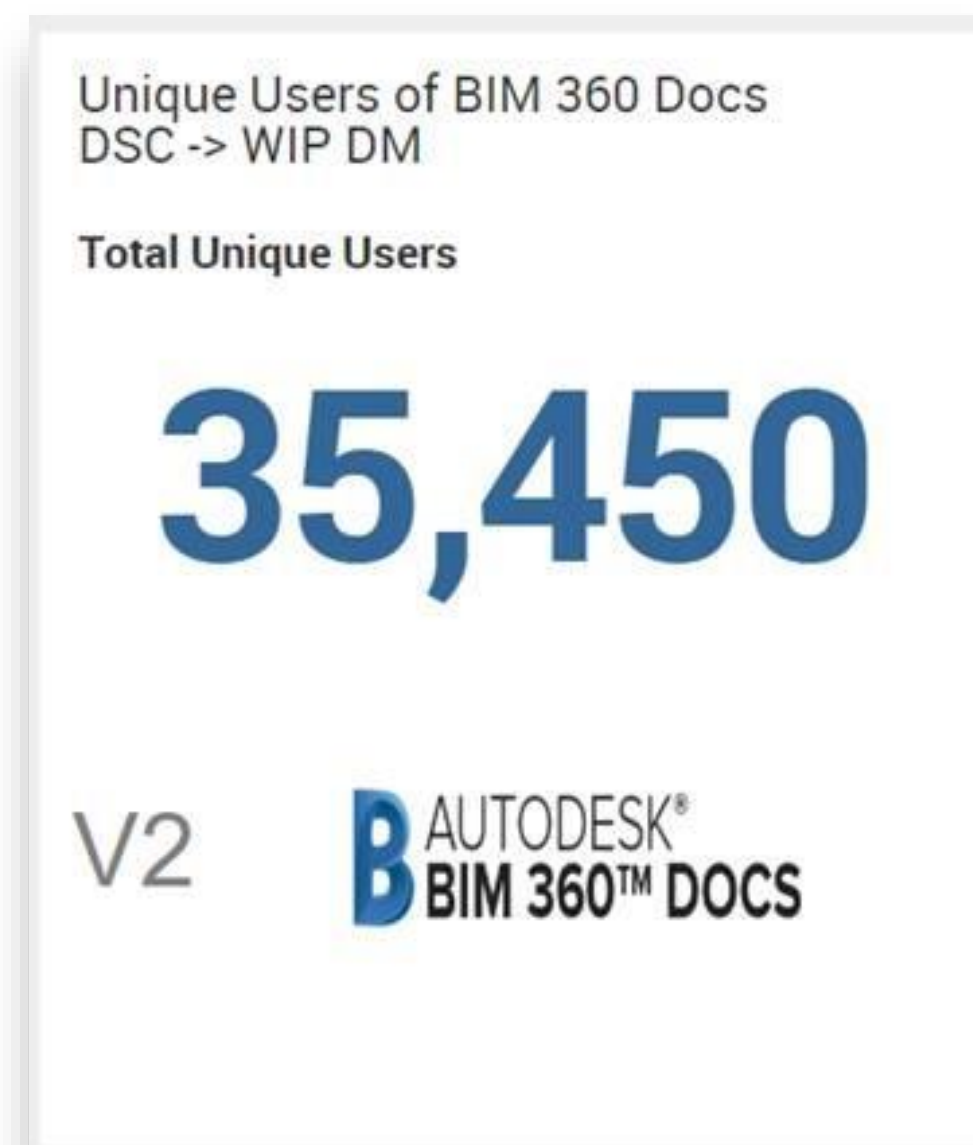
To catch up with changes, visit:

- [Desktop Connector Release Notes](#)
- [BIM 360 Release Notes](#)



Desktop Connector for BIM 360 users

Unique users in October





Thank you!

AU LAS VEGAS 2019



AUTODESK®

Make anything™

Autodesk and the Autodesk logo are registered trademarks or trademarks of Autodesk, Inc., and/or its subsidiaries and/or affiliates in the USA and/or other countries. All other brand names, product names, or trademarks belong to their respective holders. Autodesk reserves the right to alter product and services offerings, and specifications and pricing at any time without notice, and is not responsible for typographical or graphical errors that may appear in this document.

© 2019 Autodesk. All rights reserved.

