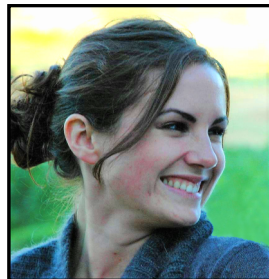


Thinking Connected:

How Cloud-Collaboration Will Affect Your BIM Execution Plan



Alex Belkofer, CM-BIM | VDC Director
McCarthy Building Companies, Inc.
[@A_Belkofer](#)



Shelby Komada, AIA, LEED AP | BIM Specialist
Autodesk, Inc.
[@Skomada](#)



Class ID: CS323663

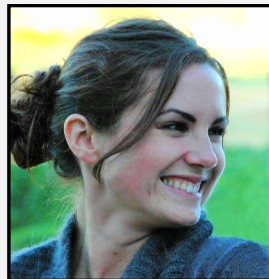


Thinking Connected:

How Cloud-Collaboration Will Affect Your BIM Execution Plan



Alex Belkofer, CM-BIM | VDC Director
McCarthy Building Companies, Inc.
[@A_Belkofer](#)



Shelby Komada, AIA, LEED AP | BIM Specialist
Autodesk, Inc.
[@Skomada](#)

Class ID: CS323663





Speakers



ALEX BELKOFER
CM-BIM



VDC Director

@A_Belkofer



SHELBY KOMADA
AIA, LEED AP



BIM Specialist

@Skomada



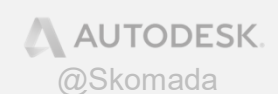


Agenda

- **Horror Stories** – The Need
- **Why** – The Reason
- **Roadmap** – The Plan
- **Journey** – The Action
- **Thinking Connected** – The Guide



@A_Belkofer





Preventable Issues

The Ghost Model

Who's On First?

Ol' Dirty Background

What are we Building?



@A_Belkofer

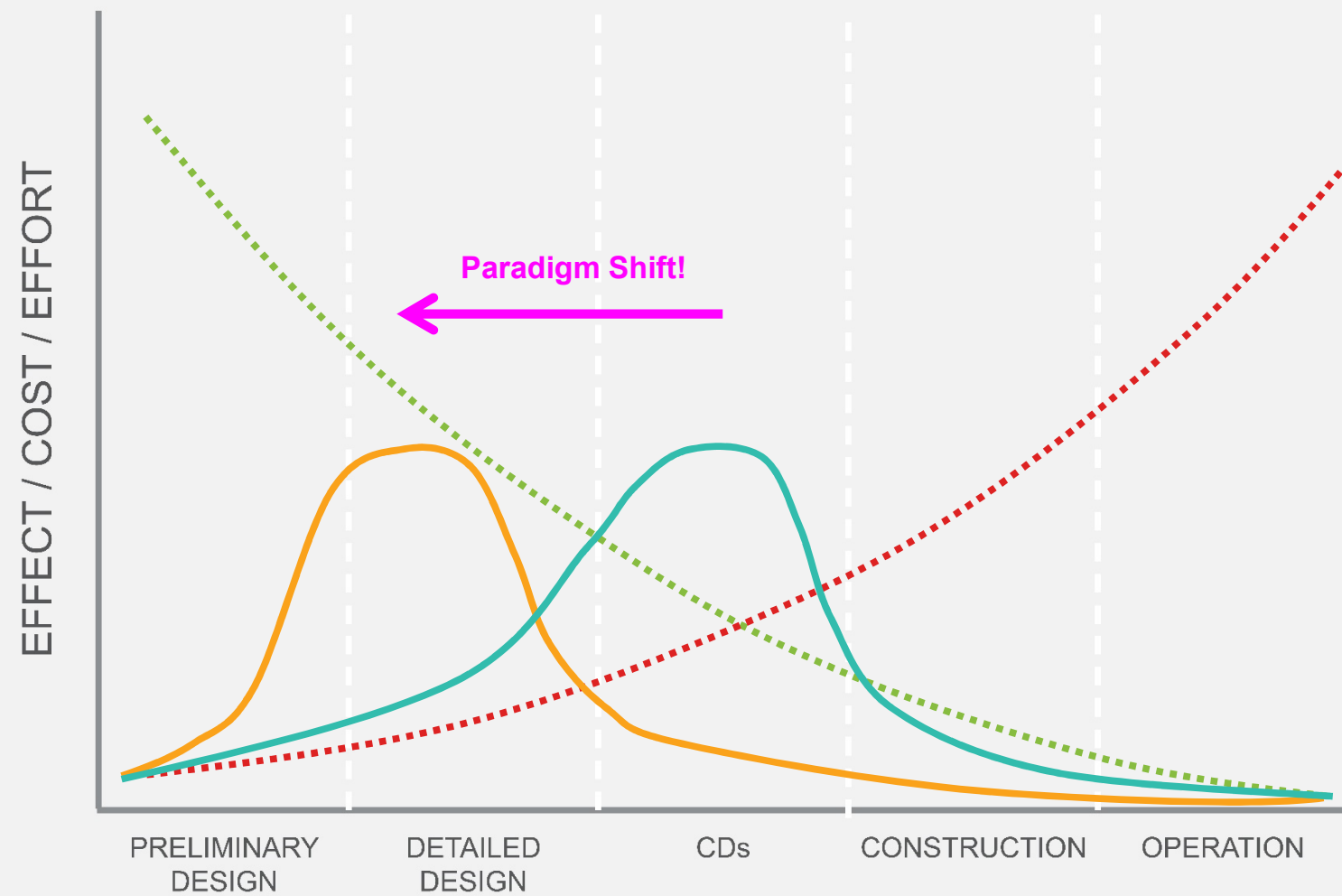


@Skomada



Time & Impact

When You Collaborate Matters



- Ability to impact cost & performance
- Cost of design changes
- Drafting-centric workflow
- BIM Workflow

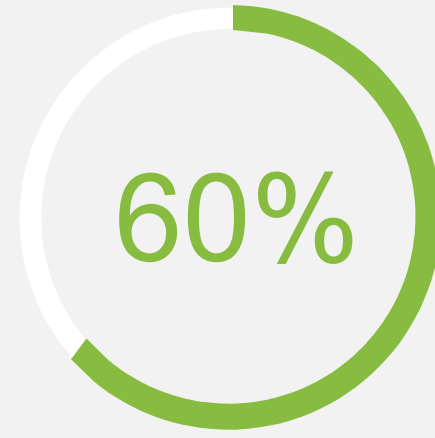
Graphic:
Patrick MacLeamy, AIA
HOK

Industry Statistics

SmartMarket Study on “Why Projects Fail”



Lack of Support



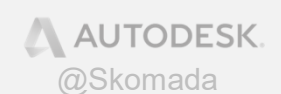
Lack of Collaboration



Lack of Reliable BExP
(or none at all)



@A_Belkofer

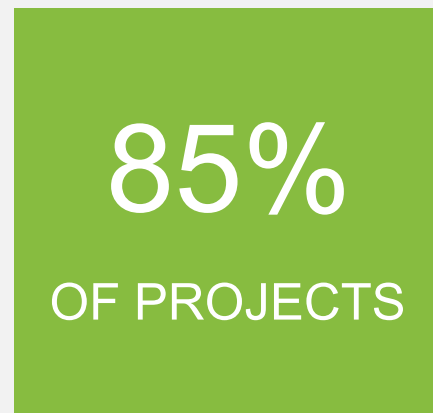


@Skomada



McCarthy Statistics

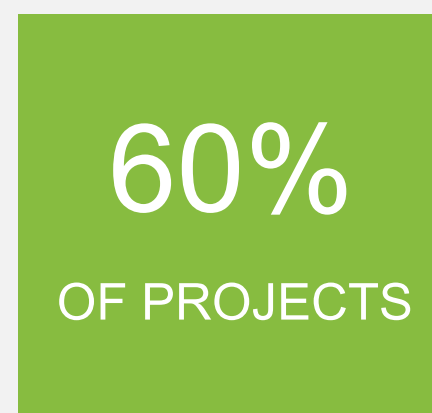
2019 Data Shows Huge Advancements



Using BExPs



Contractually tying
Trade Partners to
BIM deliverables



Organizing initial
VDC Kickoff
Meetings w/ Clients
& Design Partners
for early alignment
on BIM Goal



Co-authoring Joint
BExPs w/ Clients &
Design Partners



@A_Belkofer

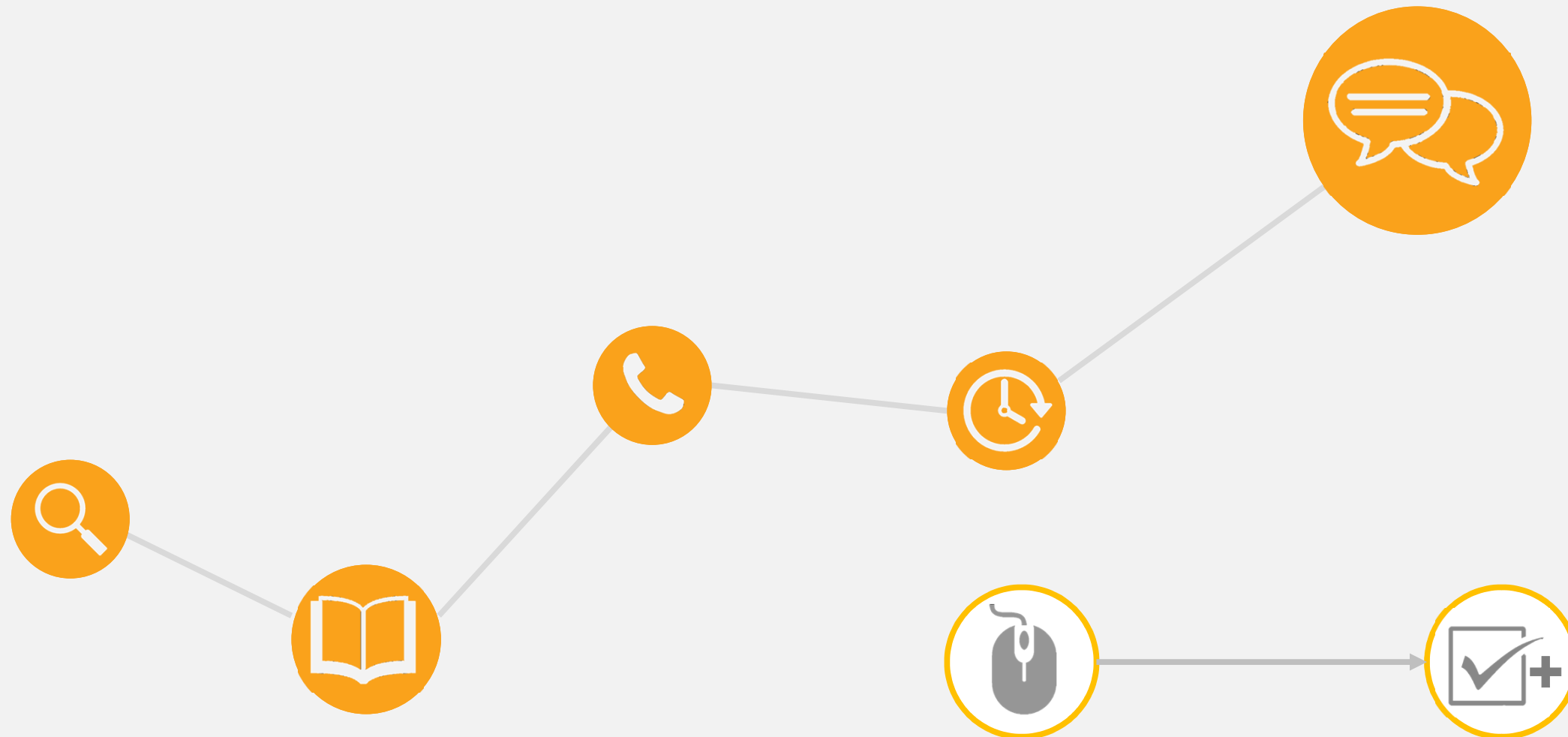


@Skomada

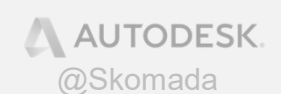


Technology Impacts...

...Our Execution of *Everything*



@A_Belkofer



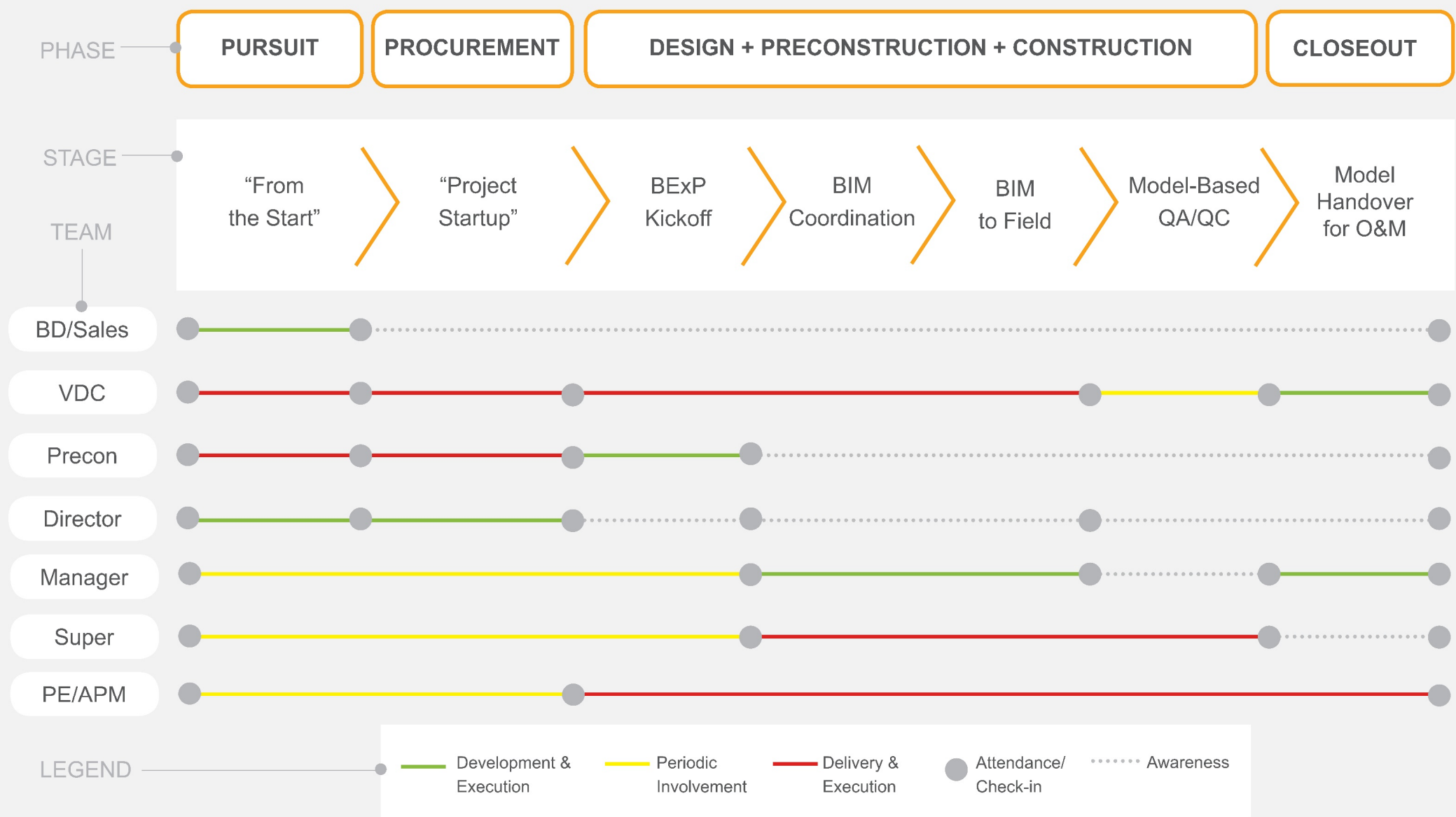
@Skomada



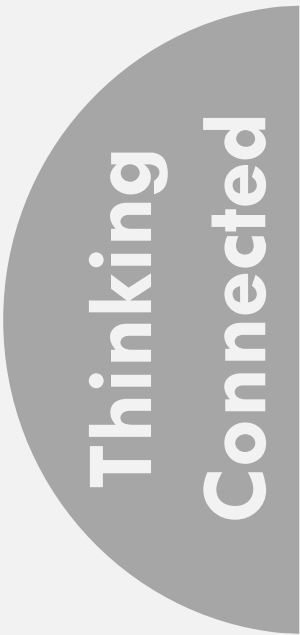
Thinking
Connected
Journey

Life Cycle Process Map

BIM Execution Planning & Deployment



Roadmap
Why
Stories
Today



Process In Action



@A_Belkofer



@Skomada

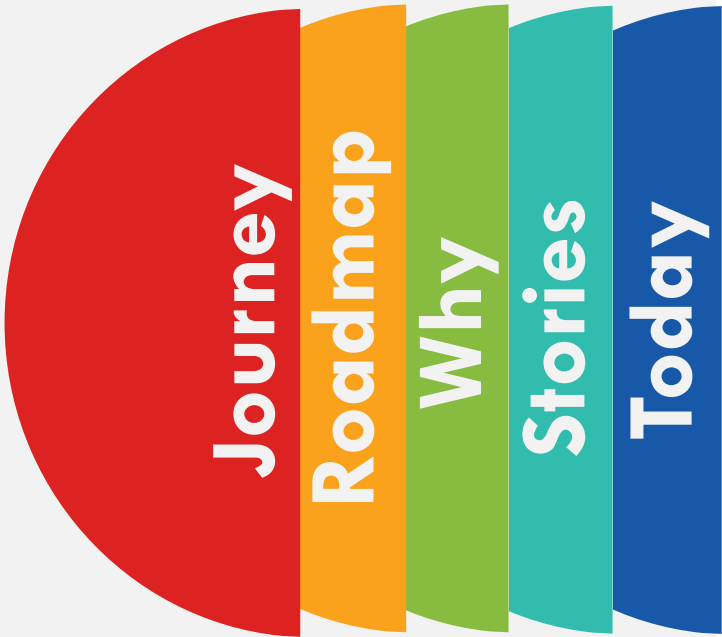
Considerations



- Excel Issue Tracking
- Keeping On Emails
- No Clear View of CTAs
- FTPs and Newforma
- Manual Archiving
- Manually Updating Links
- Comparing in Bluebeam
- Reviewing Past Emails
- Lying about Progress
- Remind Trades Constantly
- Confused on Latest Package
- No Clear View of All Projects
- Constantly Switching Programs
- Working in Silos



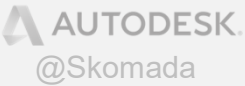
- Unified Issues
- Docs Reviews
- Customizable Project Home
- Docs Transmittals
- Docs Versioning
- Consuming in Design Collab.
- Design Collab. Change Vis.
- Project Admin Activity Audit
- Visibility to Latest Set
- Clear View of Due Dates
- Swim Lanes in Design Collab.
- Review Data in Insight
- All Data in One Ecosystem
- Democratizing Access to Data



Thinking
Connected



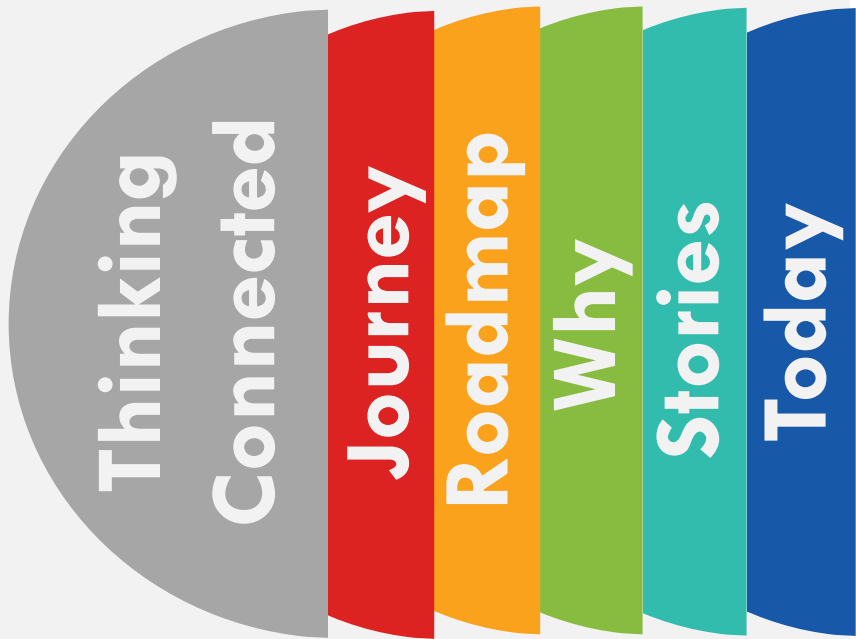
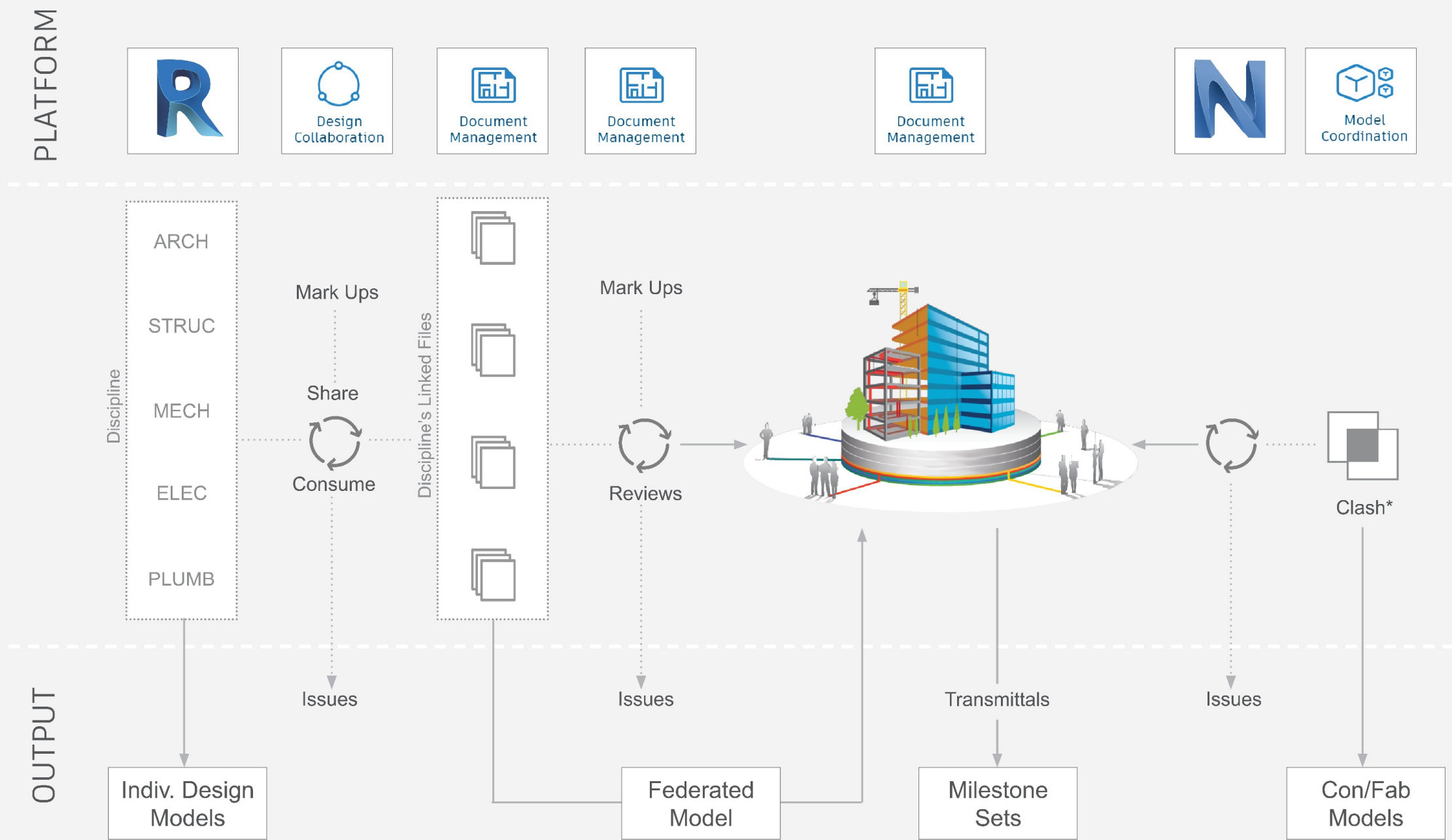
@A_Belkofer



@Skomada



Information Exchange



“Begin with the end in mind.”

- Steven Covey...(and Chuck Mies)





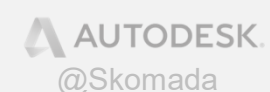
Call to Action!

Steps to promote thinking connected for effective BIM Execution...

- **Start** somewhere, make a case!
- **Engage** your A/E/C industry partners
- **Cater** your approach to each project
- **Study** what others have done
- **Don't "Boil the Ocean"** – short/long term goals



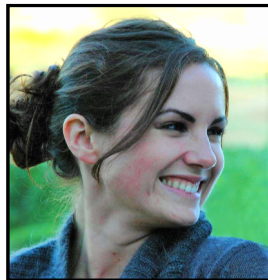
@A_Belkofer



Thank you!



Alex Belkofer, CM-BIM | VDC Director
McCarthy Building Companies, Inc.
[@A_Belkofer](#)
abelkofer@mccarthy.com



Shelby Komada, AIA, LEED AP | BIM Specialist
Autodesk, Inc.
[@Skomada](#)
shelby.komada@autodesk.com

