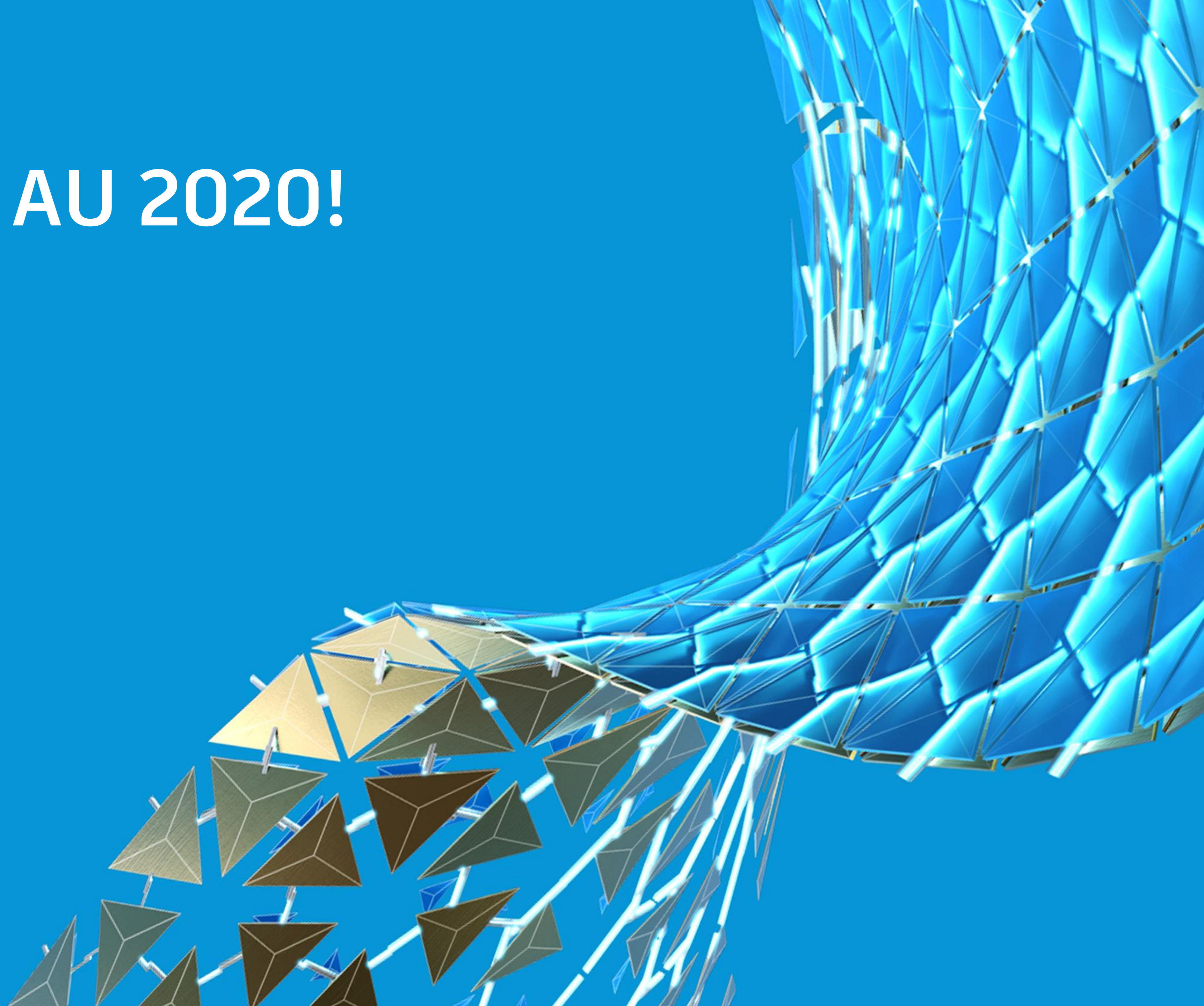


Setting Up and Using Desktop Connector with BIM 360 Docs

Luciane Conceição Taylor

Senior Technical Support Specialist, Autodesk

Welcome to AU 2020!





About the speaker

Luciane Conceição Taylor

- Architect and Urbanist
- 18 years in technical at Autodesk
- 6 years working with BIM 360 products
- Brazilian living in England for 13 years
- Enjoys spending time with family and doing crafts
- Started with AutoCAD 10
- AU speaker for second time

Learning Objectives

1. Manage construction documentation using Desktop Connector with BIM 360 Docs
2. Set up and use Desktop Connector
3. Troubleshoot most common issues
4. Best practices and recommendations





Manage construction
documentation using Desktop
Connector with BIM 360 Docs

Autodesk cloud services:



BIM 360 Team



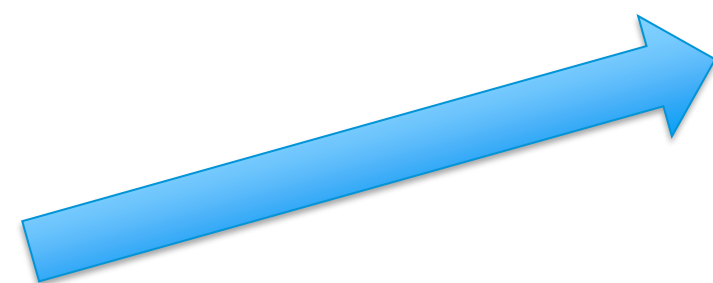
Autodesk Drive



Fusion Team



BIM 360 Docs



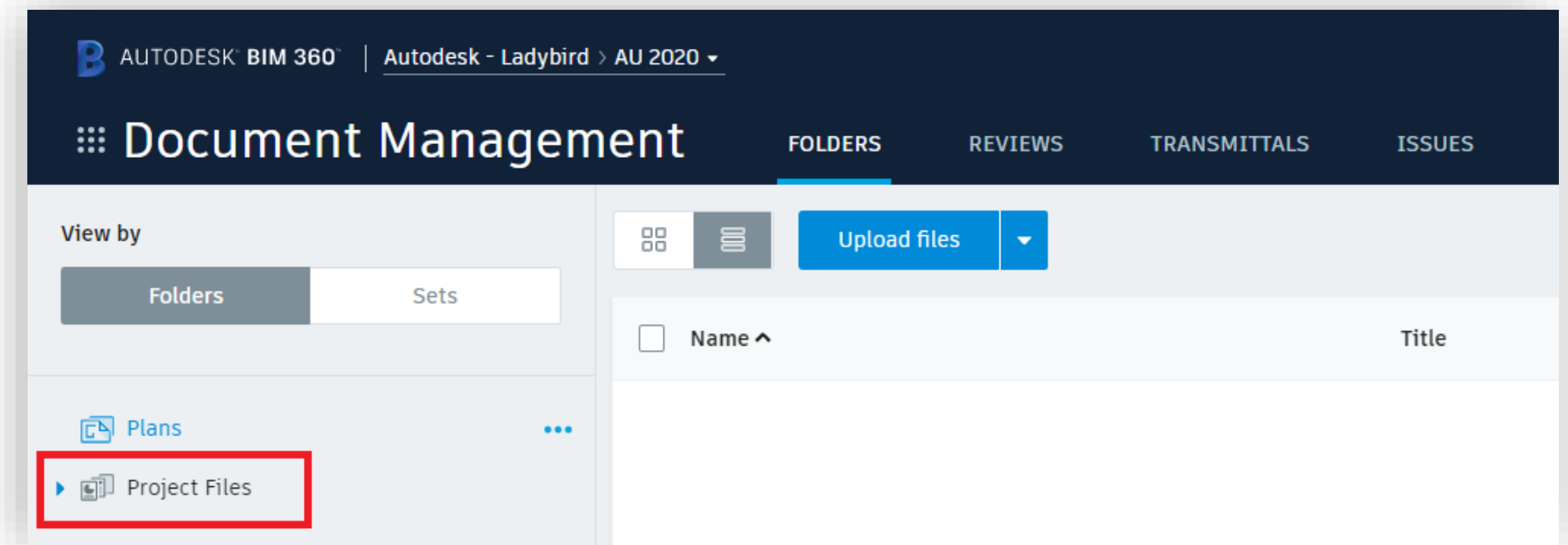
Desktop Connector for
BIM 360

BIM 360 Docs



- Upload, download, and share a variety of file types
- Assign user permissions to folders
- Create markups, issues, reviews and transmittals
- View and compare models
- Work at construction site with BIM 360 mobile app
- Use as data source for other BIM 360 modules
- Create integrations with 3rd-party or internal apps

Desktop Connector accesses the
Project Files folder



A top-down view of a wooden desk where several people's hands are huddled together in a circle, suggesting teamwork. In the background, there are two laptops, a smartphone displaying '10:24', a coffee cup with a blue lid, and a power strip with multiple outlets. A person's arm with a watch is visible in the foreground.

**Desktop Connector
+ BIM 360 Docs
= Increased productivity**

Set up Desktop Connector

1

INSTALL

System requirements

Update Windows

Install as local admin

2

SIGN IN

Autodesk account

Docs permissions

BIM 360 connected drive

3

REFRESH DRIVES

Account refresh

Review web access

Speak to project admin

4

UPDATE

Notification pop-up

Use Update link

Install as local admin

Use Desktop Connector

🔷 SYNC DOCUMENTS

Upload and download files directly via File Explorer – no need for web browser

🔷 WORK OFFLINE

Sync documents and go offline to work without Internet connection

🔷 LINK FILES

Use the connected drive to link files stored in Document Management

🔷 LOCK FILES

Only you will update the document
File Locking for Autodesk BIM 360 app

🔷 NAVISWORKS ISSUES

Review and create Document Management issues

🔷 COLLABORATION FOR CIVIL 3D

BIM 360 Design functionality for Civil 3D files, data shortcuts and external references

Starting up

Connected Drive

Linking Revit files

Issues in Navisworks

Working with AutoCAD files

File Locking for BIM 360 App

Troubleshooting Basics



❖ Computer settings

- ❖ Permissions to install and use
- ❖ Connection
- ❖ Free space

❖ Desktop Connector status

❖ Document Management

- ❖ Supported file types
- ❖ Member permissions

Troubleshooting Basics

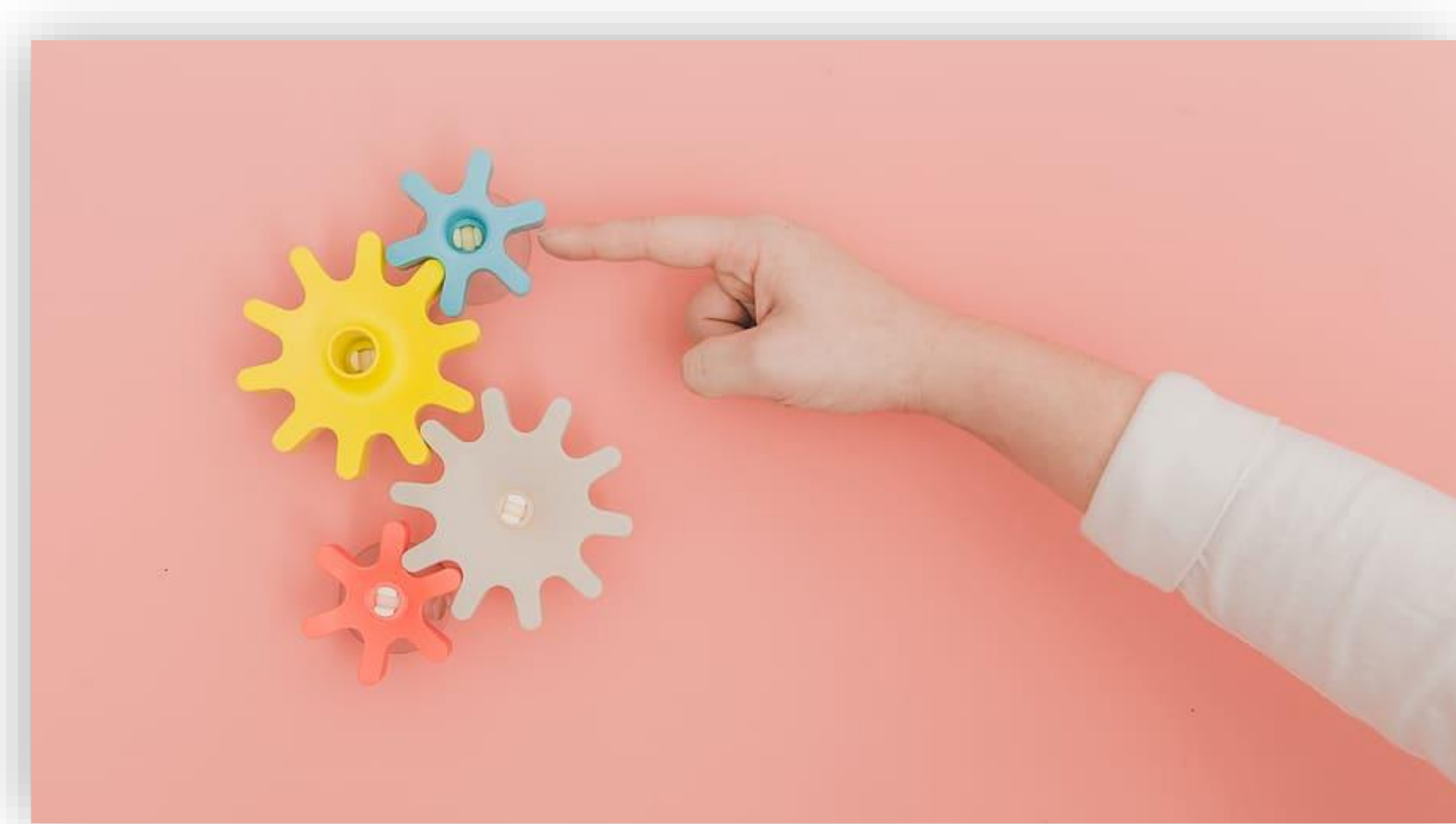


🟡 Dataset

- 🟡 Corrupted data
- 🟡 Long paths

Long Paths

Troubleshooting Basics



🟡 Dataset

- 🟡 Corrupted data
- 🟡 Long paths

🟡 Revit files

- 🟡 Revit cloud files

Revit Cloud files

Troubleshooting Basics



Dataset

- Corrupted data
- Long paths

Revit files

- Revit cloud files

Delete files

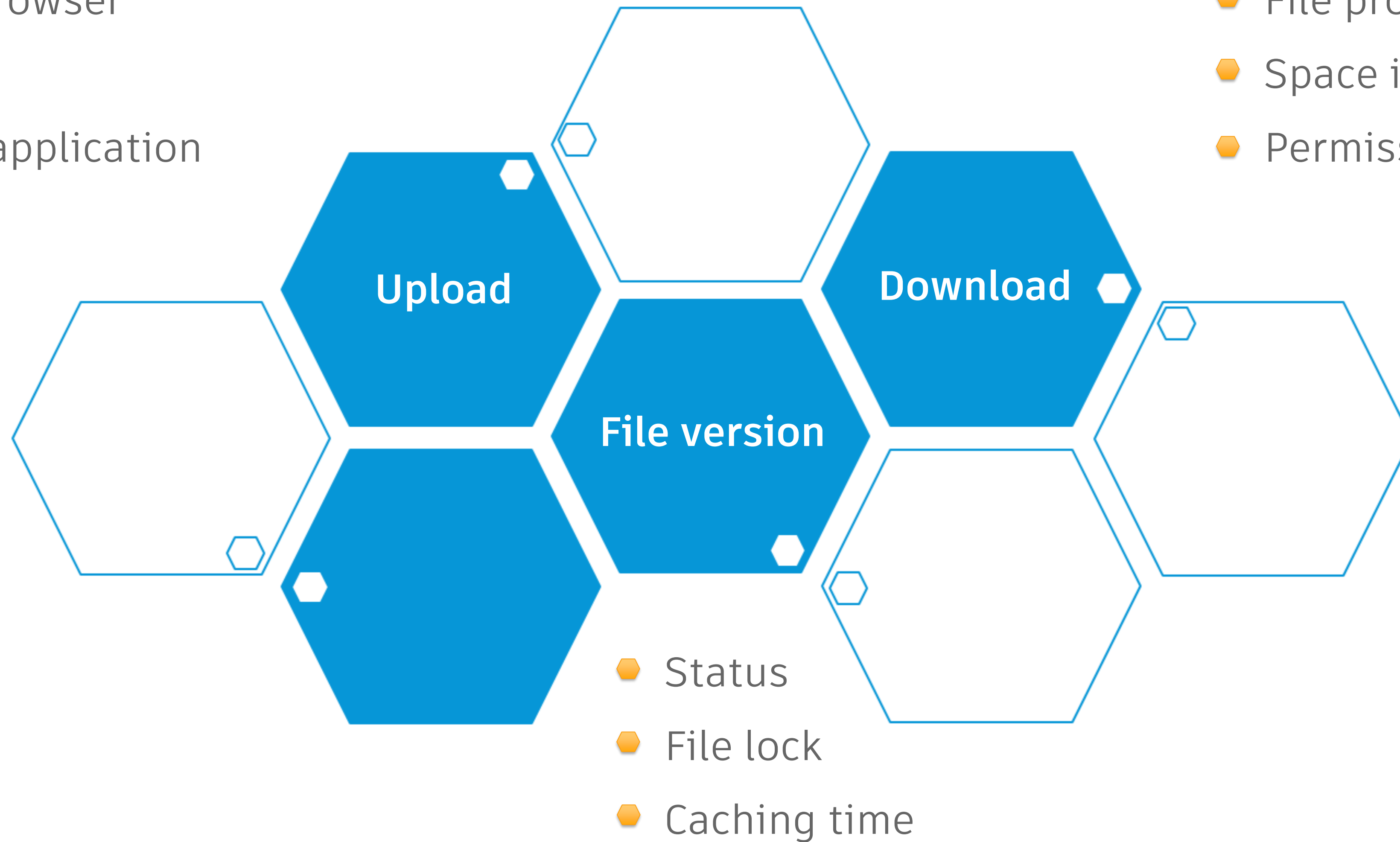
- Delete local
- Free up space
- Delete from Docs

Deleting Files

Troubleshooting most common issues

- Web browser
- Online
- Close application

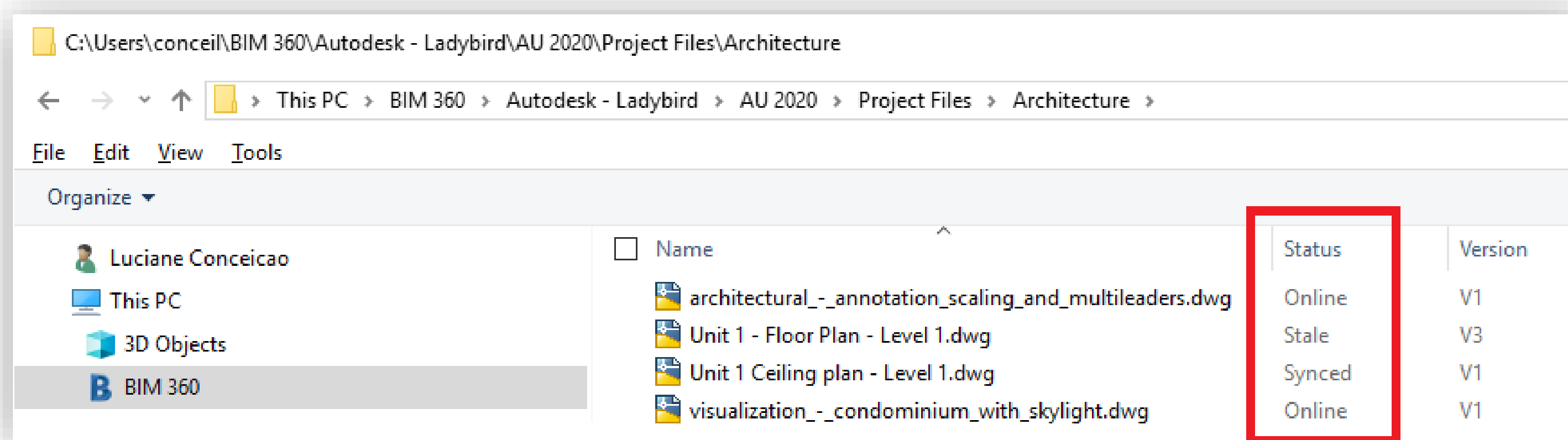
- File processing
- Space in disk
- Permissions



Troubleshooting most common issues

File Status

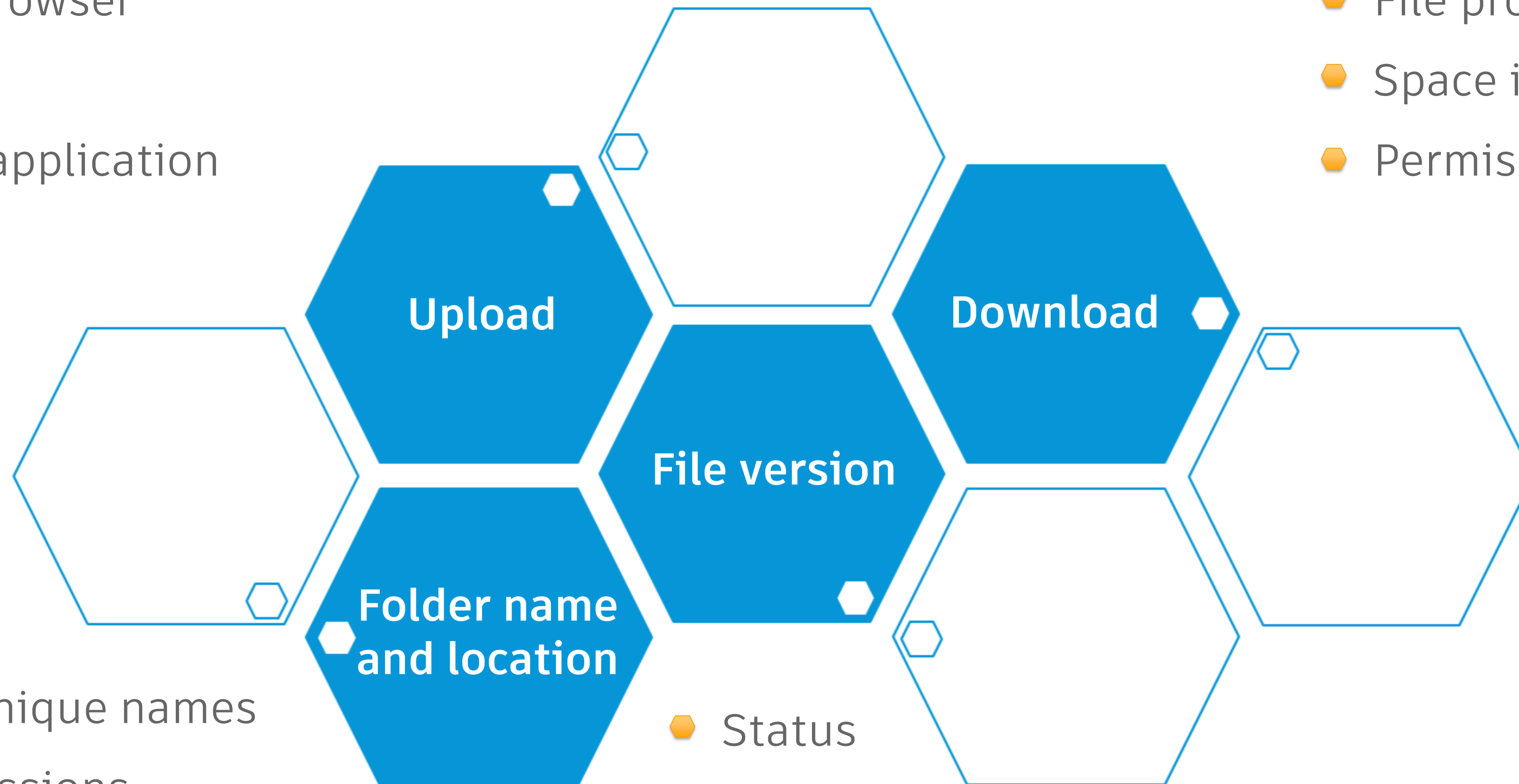
New	The local file has not been uploaded
Synced	The local file is up-to-date with the file in the data source
Online	The file has not been downloaded
Modified	The local file has been modified and not been uploaded
Conflict	Edits made locally and in Docs
Stale	The local file version is older than the one in Docs
Error	Error obtaining the local file Status value - refresh the window



Troubleshooting most common issues

- Web browser
- Online
- Close application

- File processing
- Space in disk
- Permissions



- Not unique names
- Permissions

- Status
- File lock
- Caching time

Project Folders

Troubleshooting Techniques

- Review file properties in File Explorer



File
Properties

Troubleshooting Techniques

Review File Properties

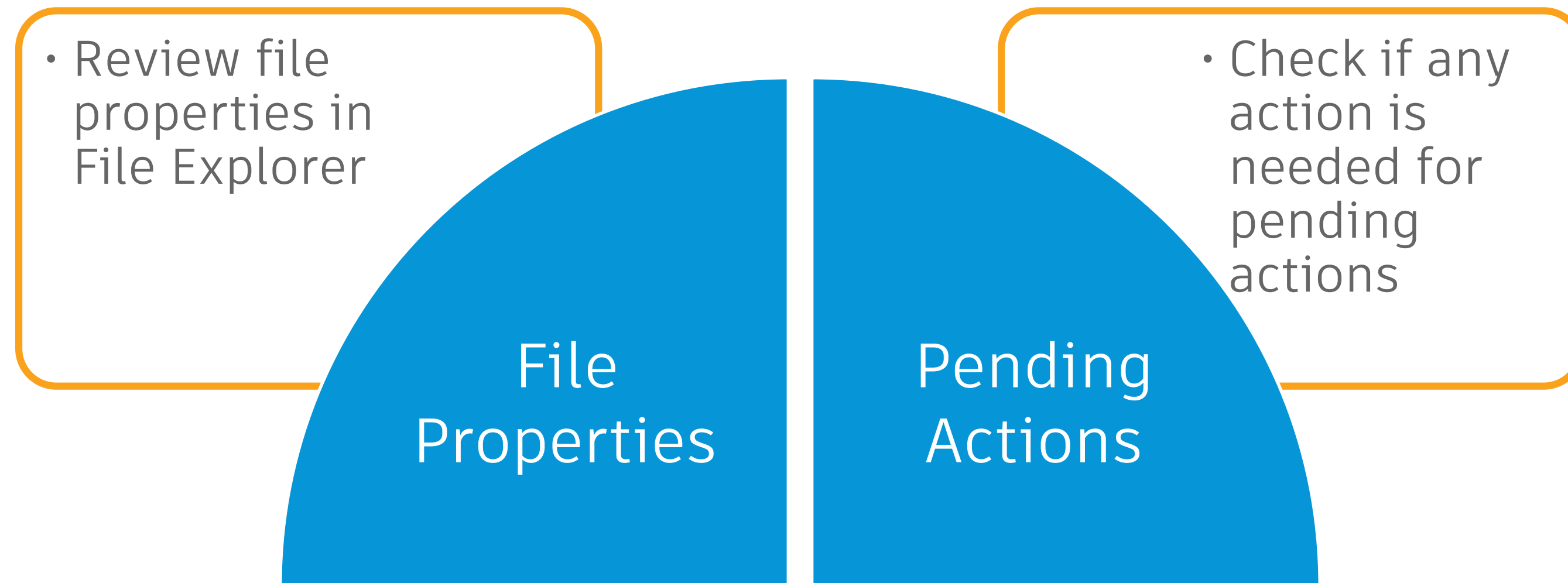
The screenshot shows a Windows File Explorer window with the address bar set to `C:\Users\concei\BIM 360\Autodesk - Ladybird\AU 2020\Project Files\Architecture`. The left sidebar shows the navigation pane with 'BIM 360' selected. The main pane displays a list of files and folders. The file 'visualization_-_condominium_with_skylight.dwg' is selected, and its context menu is open, showing various properties.

Name	Status	Version	Size	Author	Locked?	Locked by
Phase 1				You		
Phase 2				You		
architectural_-_annotation_scaling_and_multileaders.dwg	Online	V1	145 KB	You		
Unit 1 - Floor Plan - Level 1.dwg	Stale	V3	56.1 KB	You		
Unit 1 Ceiling plan - Level 1.dwg	Synced	V1	41.2 KB	You		
visualization_-_condominium_with_skylight.dwg	Online	V1	1.34 MB	You	Locked	You

The context menu for the selected file shows the following options:

- Size All Columns to Fit
- Name
- Status
- Version
- Size
- Author
- Locked by
- Date created in BIM 360
- Date modified in BIM 360
- Date contents refreshed
- Date permissions refreshed
- Date created on disk
- Date modified on disk
- Date references refreshed
- Date locked
- Has references
- Locked?

Troubleshooting Techniques



Troubleshooting Techniques

Check Pending Actions

Pending Actions

Time	Name	Action	Source	State
10/25/2020 8:02 PM	rac_basic_sample_project RC.rvt	Workspace Sync	BIM 360	Failed - action required

- Apply Action
- Clear Action
- Apply All Actions
- Clear All Actions

Icon	Name	Path	Status
	rac_basic_sample_...	Autodesk - Ladybi...	Modified

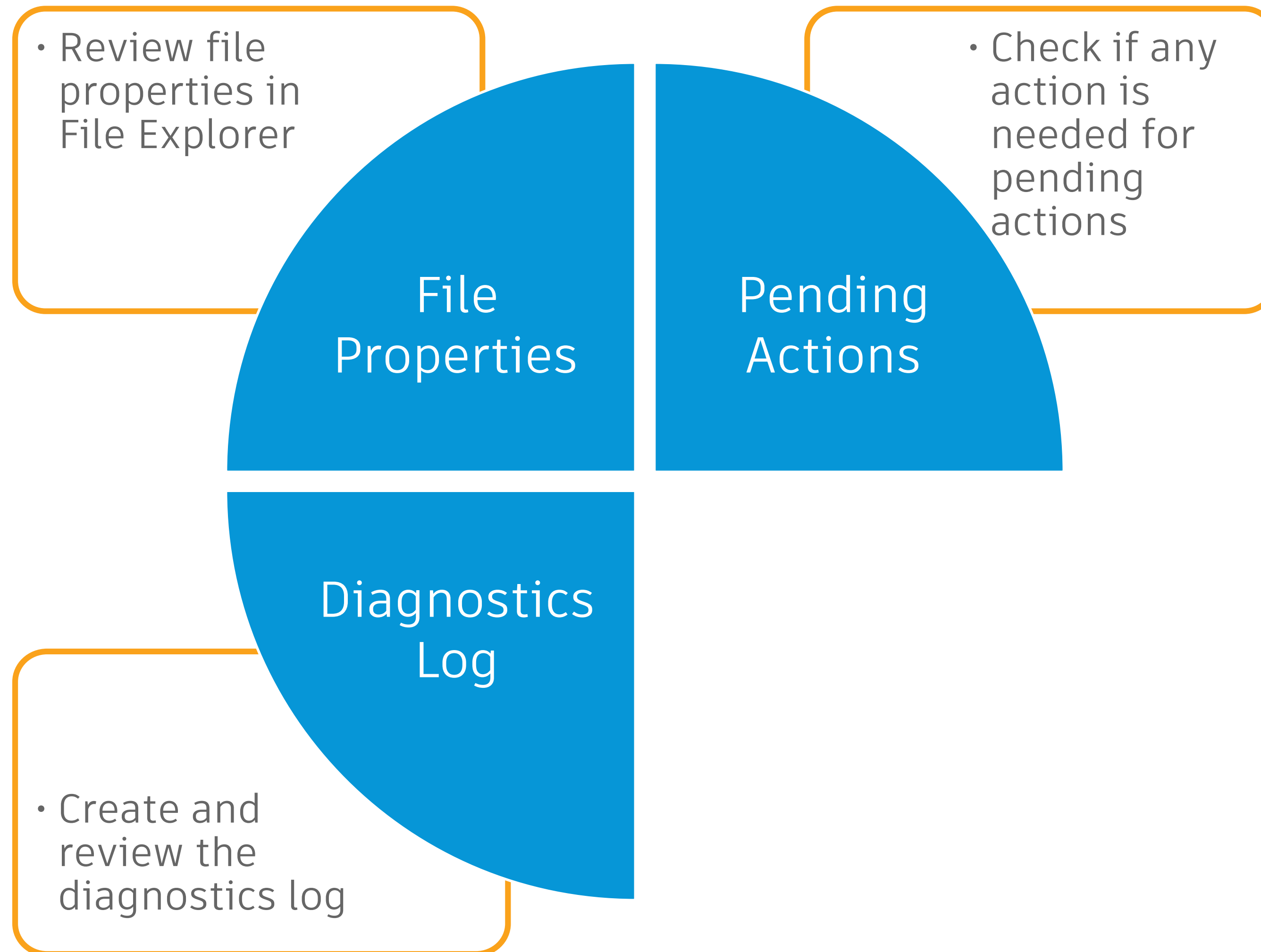
Message
The requested file cannot be overwritten due to being a different type such as a published model
Affected file: rac_basic_sample_project RC.rvt

Pending Action Count: 1

- Sign Out (Luciane Conceicao)
- Work Offline
- Pending Actions**
- Refresh Drives
- Send Feedback...
- Help
- Exit

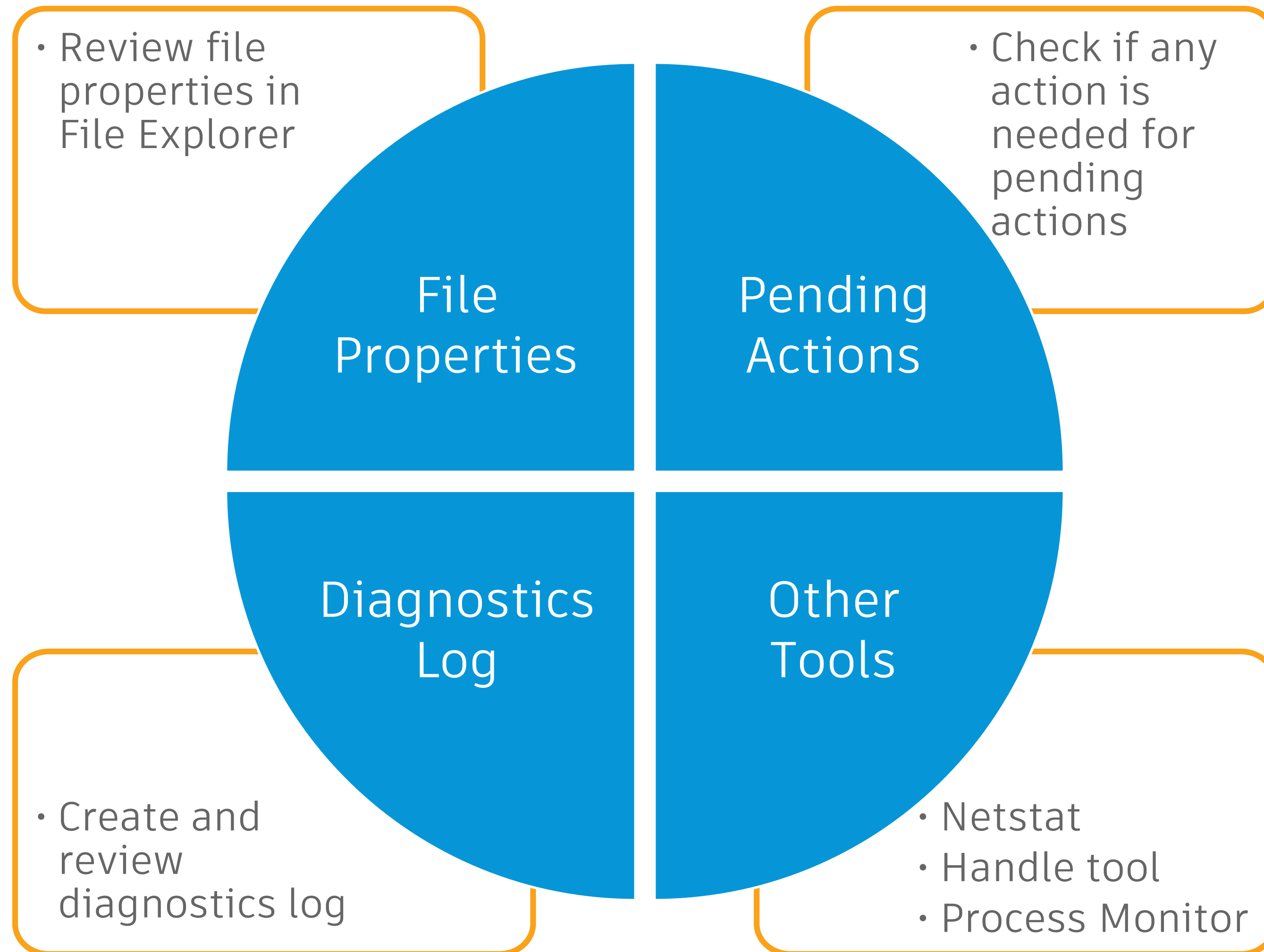
EN

Troubleshooting Techniques



Diagnostics Log

Troubleshooting Techniques



Best practices and recommendations



Plan ahead!

- Review project permissions
- Keep it simple
- Single user account
- Have consistent workflow
- Test first

Resources

HELP

Desktop Connector Help

BIM 360 Help

Authoring apps Help

SUPPORT

Autodesk Knowledge
Network - AKN

Contact support

BIM 360 forum

IDEAS

Post your idea

Vote ideas up

Send Feedback

LEARNING

Learn BIM 360

AU content

Release notes



Q&A session

Live Q&A session at AU 2020

November 19th @ 1:00 PM GMT

Special guest

Join us!

Thank you!



Autodesk and the Autodesk logo are registered trademarks or trademarks of Autodesk, Inc., and/or its subsidiaries and/or affiliates in the USA and/or other countries. All other brand names, product names, or trademarks belong to their respective holders. Autodesk reserves the right to alter product and services offerings, and specifications and pricing at any time without notice, and is not responsible for typographical or graphical errors that may appear in this document.

© 2020 Autodesk. All rights reserved.