

# Leveraging data through ACC Connect and Forge

**Tom Denby**

Digitalisation Manager - BIM





# About the speaker

## Background

**I'm a Digitalisation manager for Skanska UK, with a background in delivering digital solutions to site. Most currently being part of @oneAlliance working to make Digital Project Rehearsal business as usual. I'm keen to drive change in projects behaviours through finding more efficient ways of working using digital technologies, to increase productivity and decrease health and safety risks.**

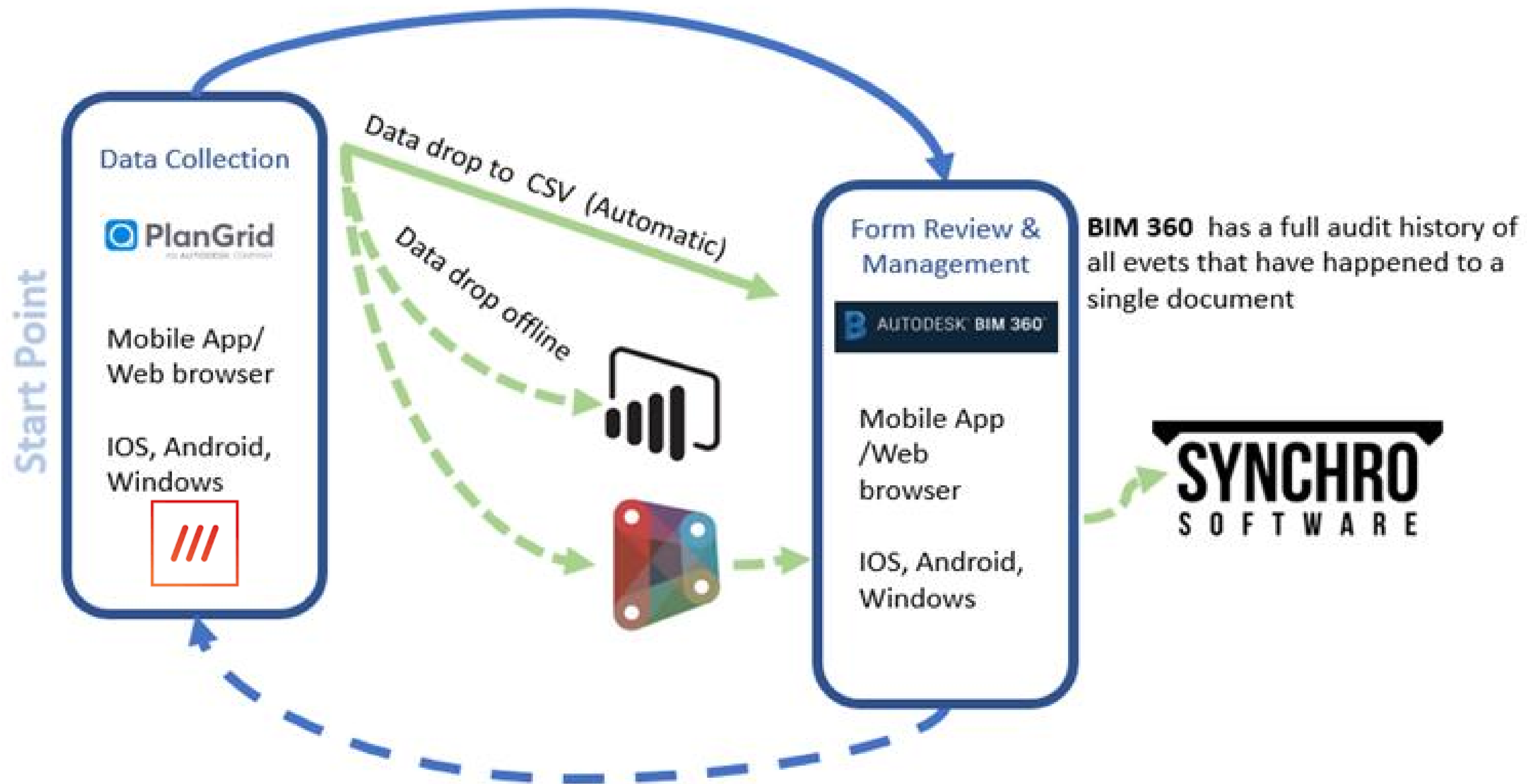
# Objectives

**Exploring industry practice and workflows.**

- Gain a clear understanding of how PlanGrid links to BIM 360, and how this will streamline your project workflows.
- Discover how easy it is to use ACC Connect, and how using it will make your current process more efficient.
- Discover how integrating with external systems such as What3Words will enable the user to understand a new dimension to the data.
- Learn how to use ACC Connect to capitalize on the collection of data in a structured manner to automate the design process using Dynamo.

# Process

Once a form is filled in a new revision is **automatically** created in BIM360



**User** Creates new version of form in Plangrid to make any changes or sign off form

# Phases/Stages

## STEP 1

### COLLECT DATA

- Plangrid
- What3words

## STEP 2

### STORE DATA IN BIM 360

- Check that the data doesn't exist in BIM360
- Create a new storage location and BIM360 issue

## STEP 3

### UPDATE DATA IN BIM 360

- Take updated field reports from plangrid
- Update the data in BIM360

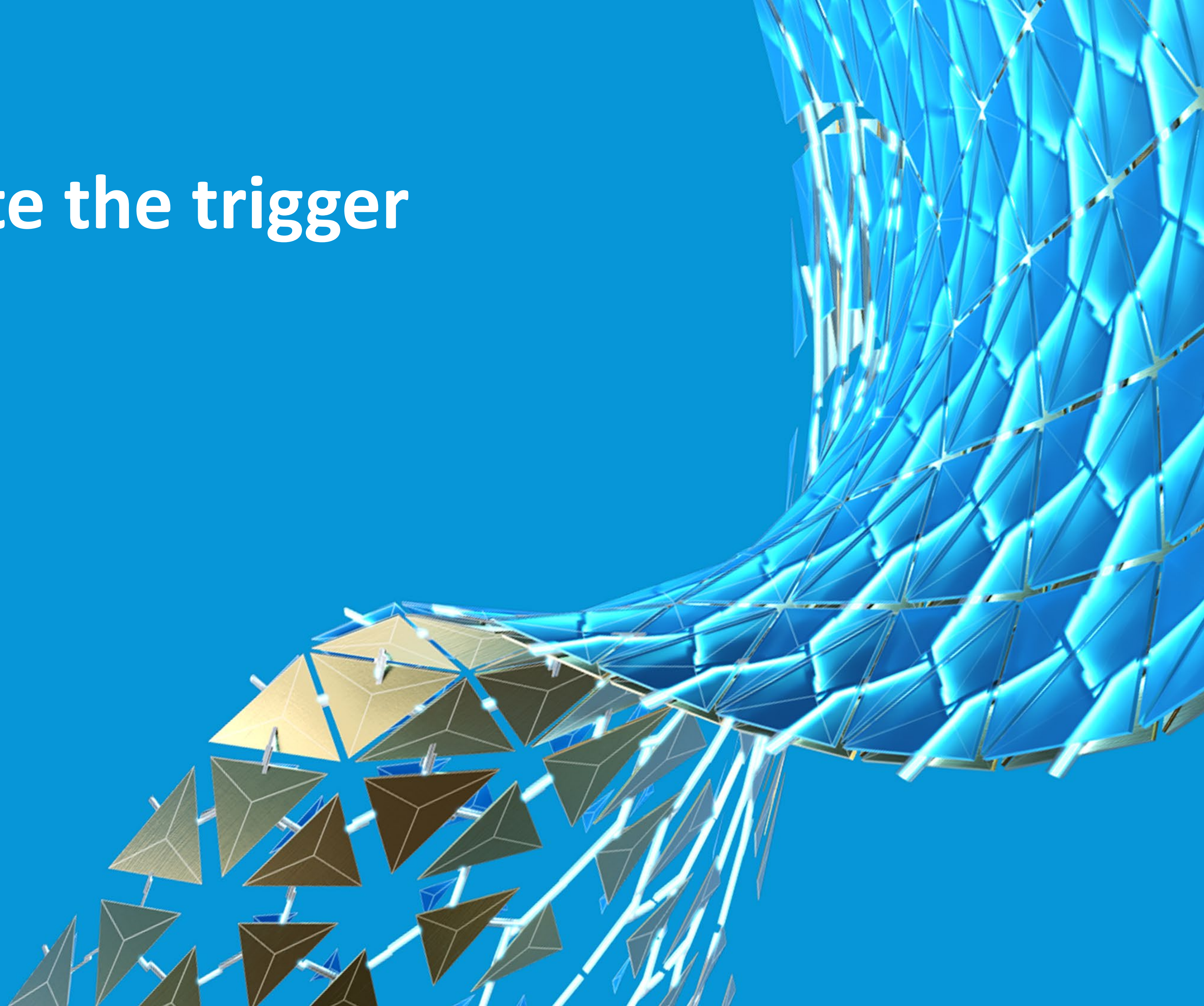
## STEP 4

### INTEGRATE WITH ASSEMBLE

- Link BIM360 and the field reports to a unique element within assemble and collect data from the model element to store in BIM360 Issue



# Step 1 – Create the trigger





# Step 1 – Collect Data

Recipes | Autodesk Construction

app.workato.com/?fid=270689

ACC CONNECTRecipesDashboardApp ConnectionsToolsCommunity Library

Skanska Construction UK Ltd.  
Tom Denby (Customer Admin)

Skanska Construction UK Ltd.'s Recipes

Create a new recipe

Active1

Recently stopped15

All25

Trash0

Home

- Autodesk Templates
- Infrastructure
- Infrastructure Services
- Infrastructure\_RDP\_M42
- Sandpit Area
  - Chris Hollett
  - Jan Georgopoulos
  - Steve Frost
  - Tom Denby Sandpit
    - AU2020

Move recipes into folder

Let's drag and drop recipes into the folder.

+ Create new folder

Search recipes

Home / Sandpit Area / Tom Denby Sandpit / AU2020

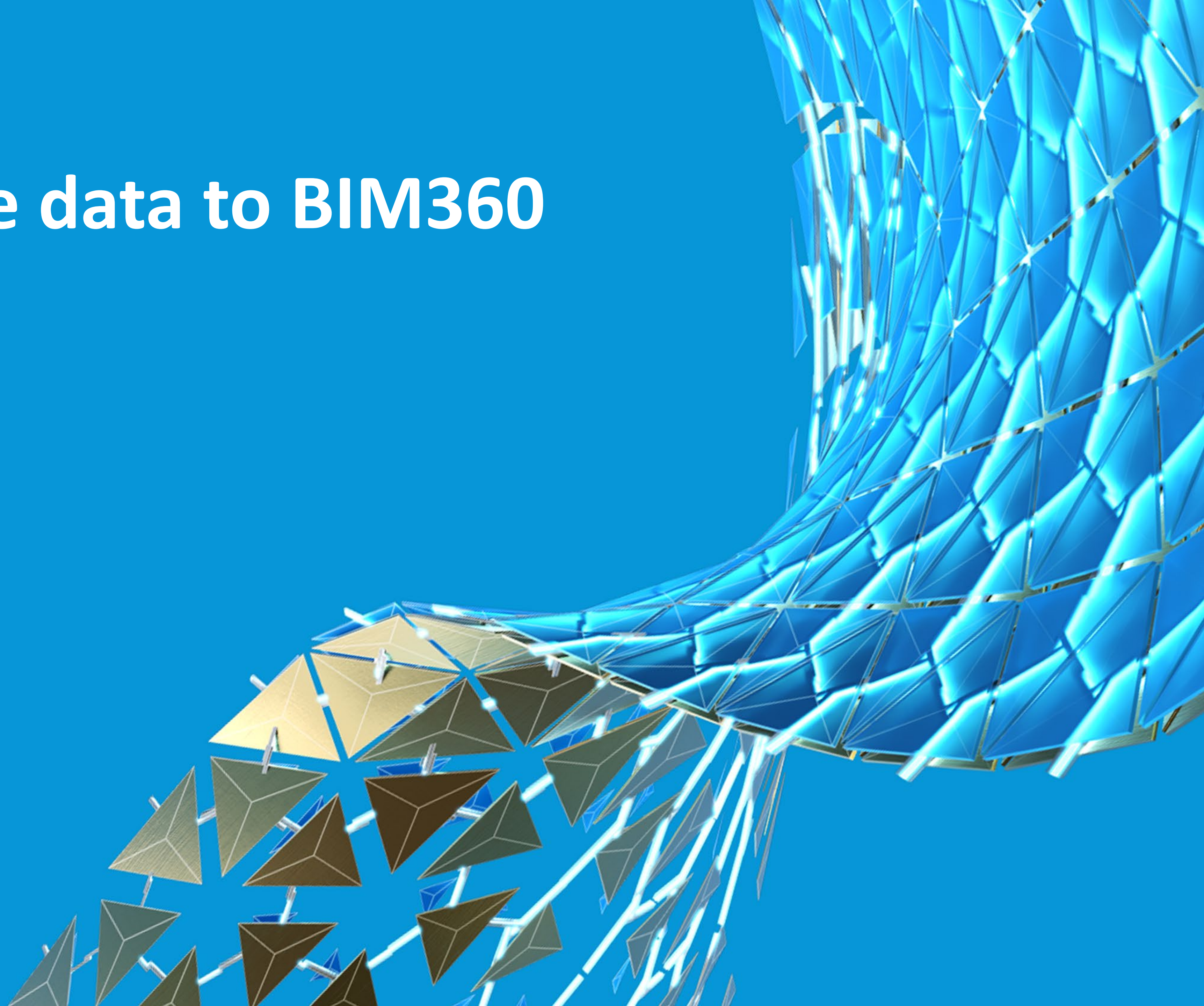
Filter by: AllActiveInactive

This folder has no recipes

Let's [browse recipes](#) created by our community or [create a new recipe](#) to get started.



## Step 2 – Move data to BIM360





# Step 2 – Move data to BIM360

The screenshot displays the Workato interface for editing a recipe named 'AU2020\_ACC'. The recipe is configured with the following steps:

- 1. TRIGGER:** New field report in PlanGrid
- 2. ACTIONS:** Get file from URL (Download File from Plangrid)
- 3. ACTIONS:** Create variable RefID (Create ID (String))
- 4. ACTIONS:** Create variable Location (Var to hold the What3words Location)
- 5. ACTIONS:** Send request via HTTP

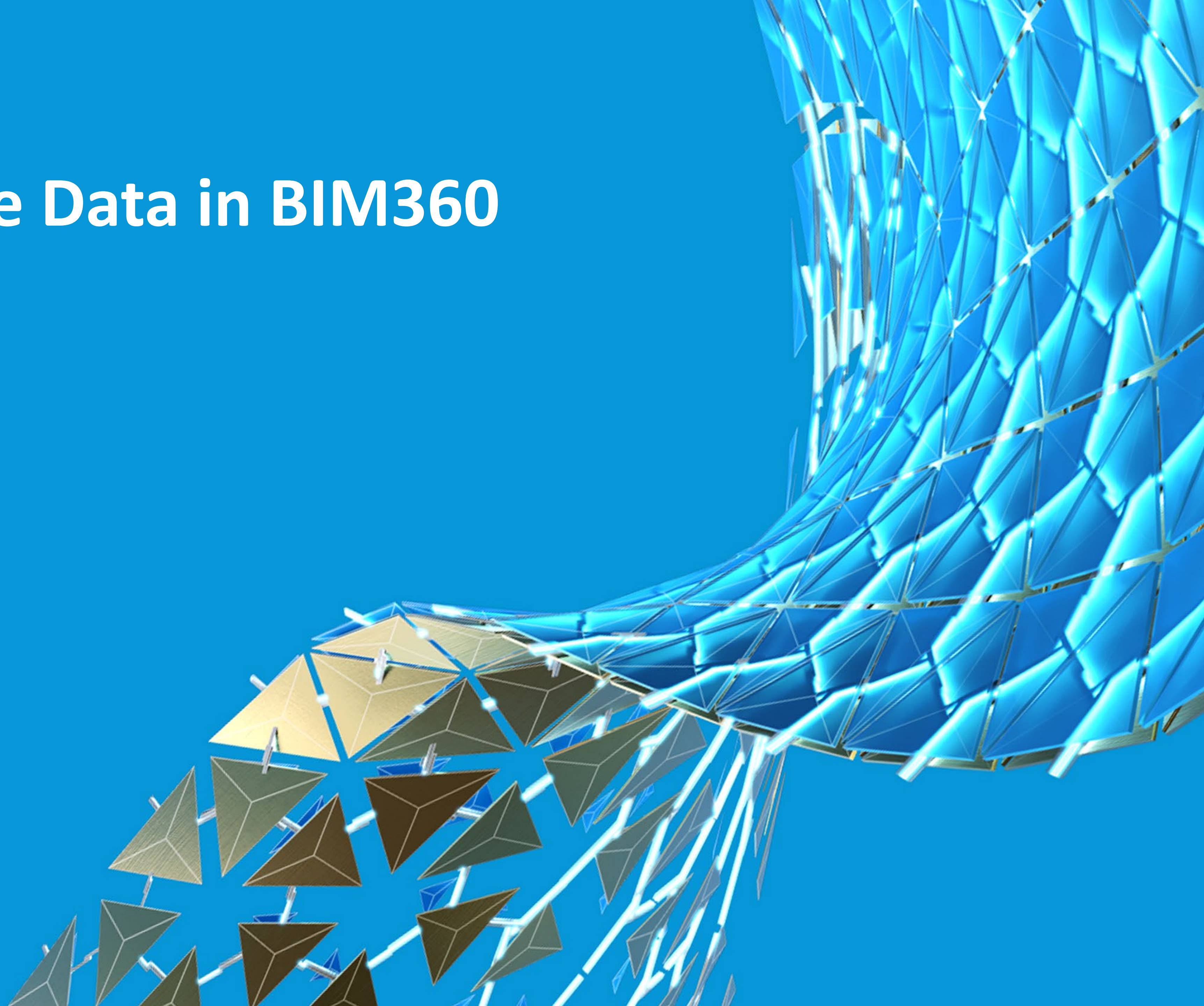
The right panel shows the configuration for the 'Send request via HTTP' action. The 'Response schema' section includes the following fields:

- country
- square
- southwest
- lng
- lat
- northeast
- lng

The 'HTTP response headers' section is currently empty, with a prompt to 'Describe all the response headers' and a 'Use JSON' button. The 'Mark non-2xx response codes as success?' option is set to 'No'.

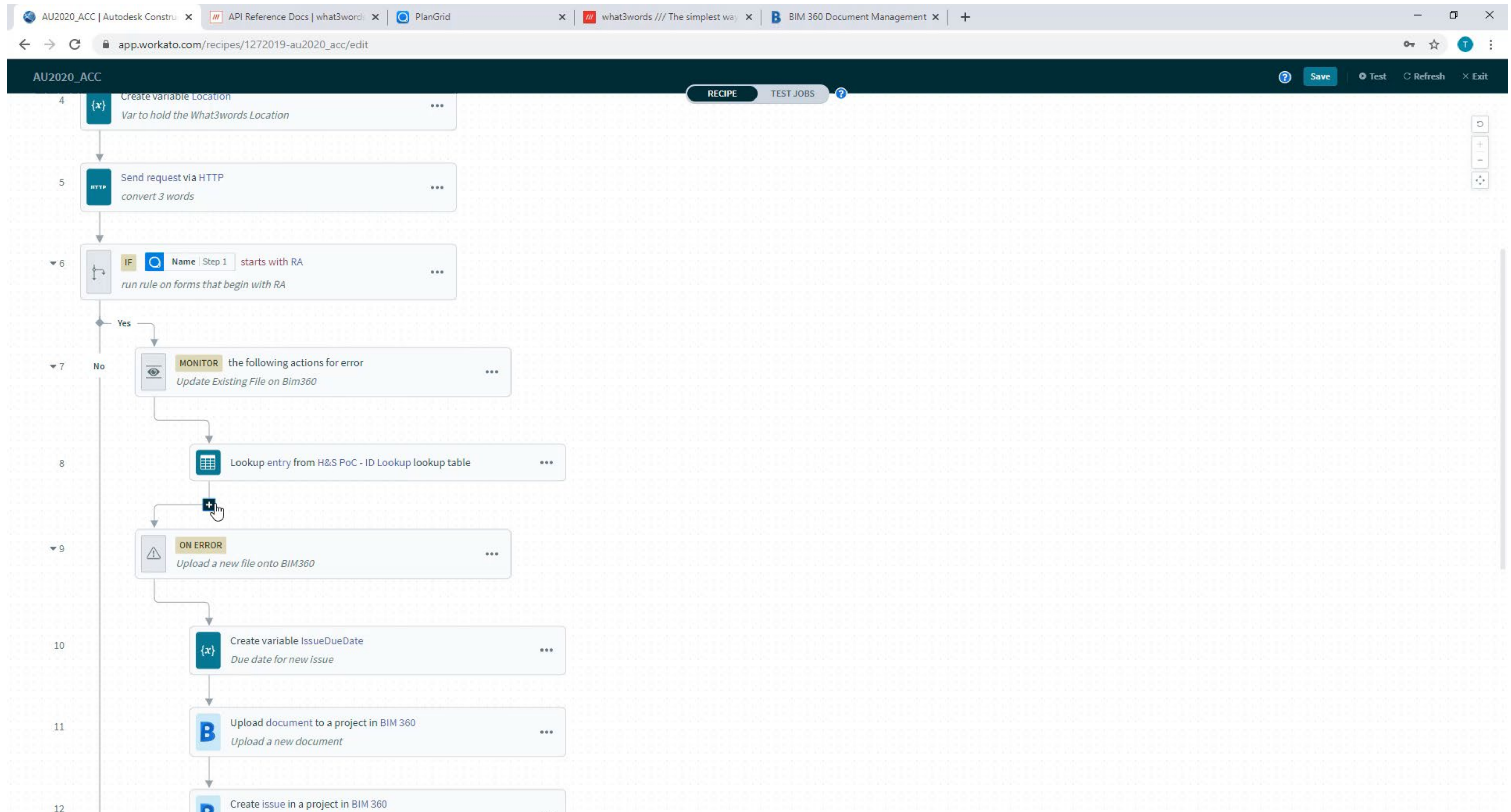


## Step 3 – Update Data in BIM360



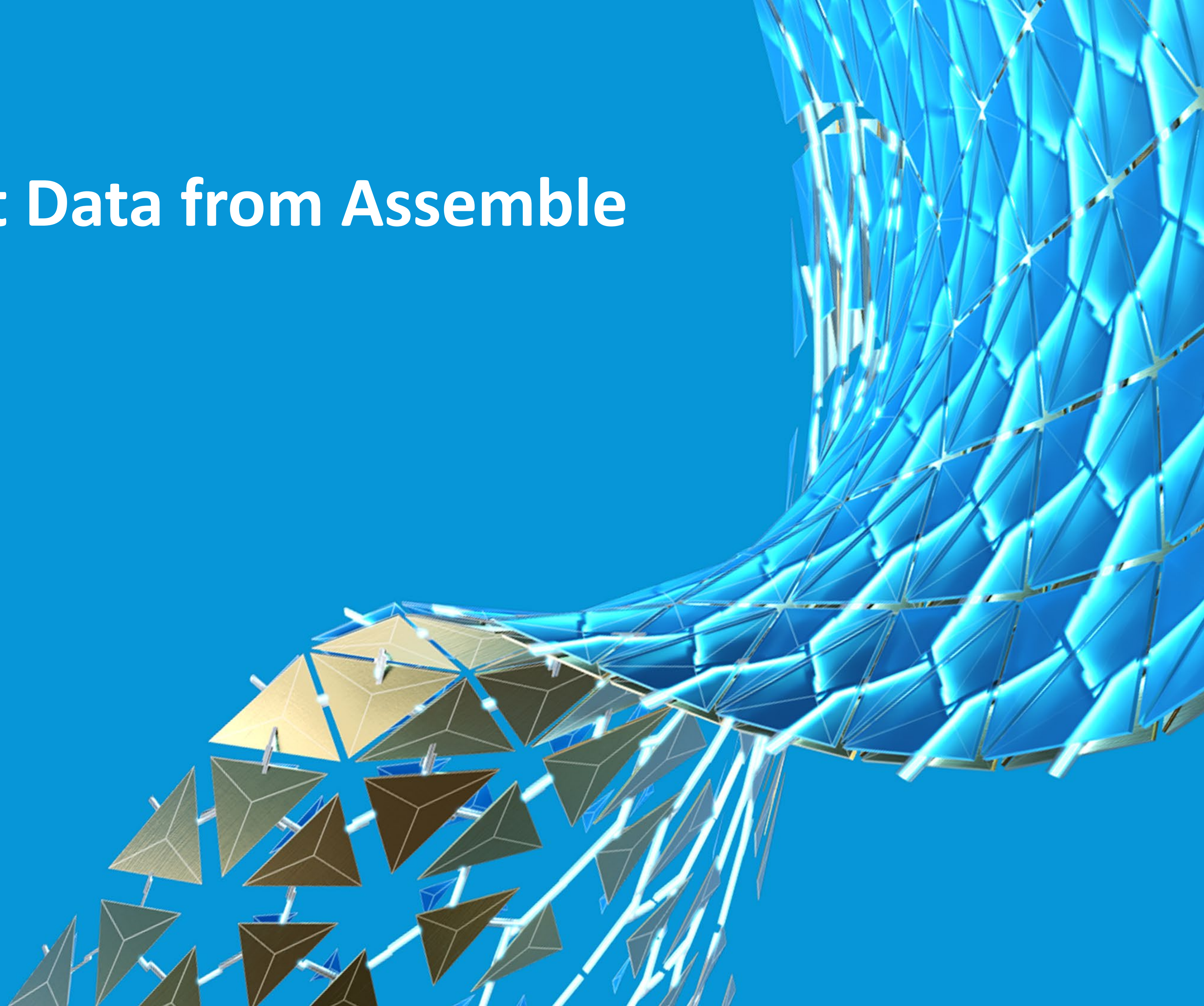


# Step 3 – Update Data in BIM360



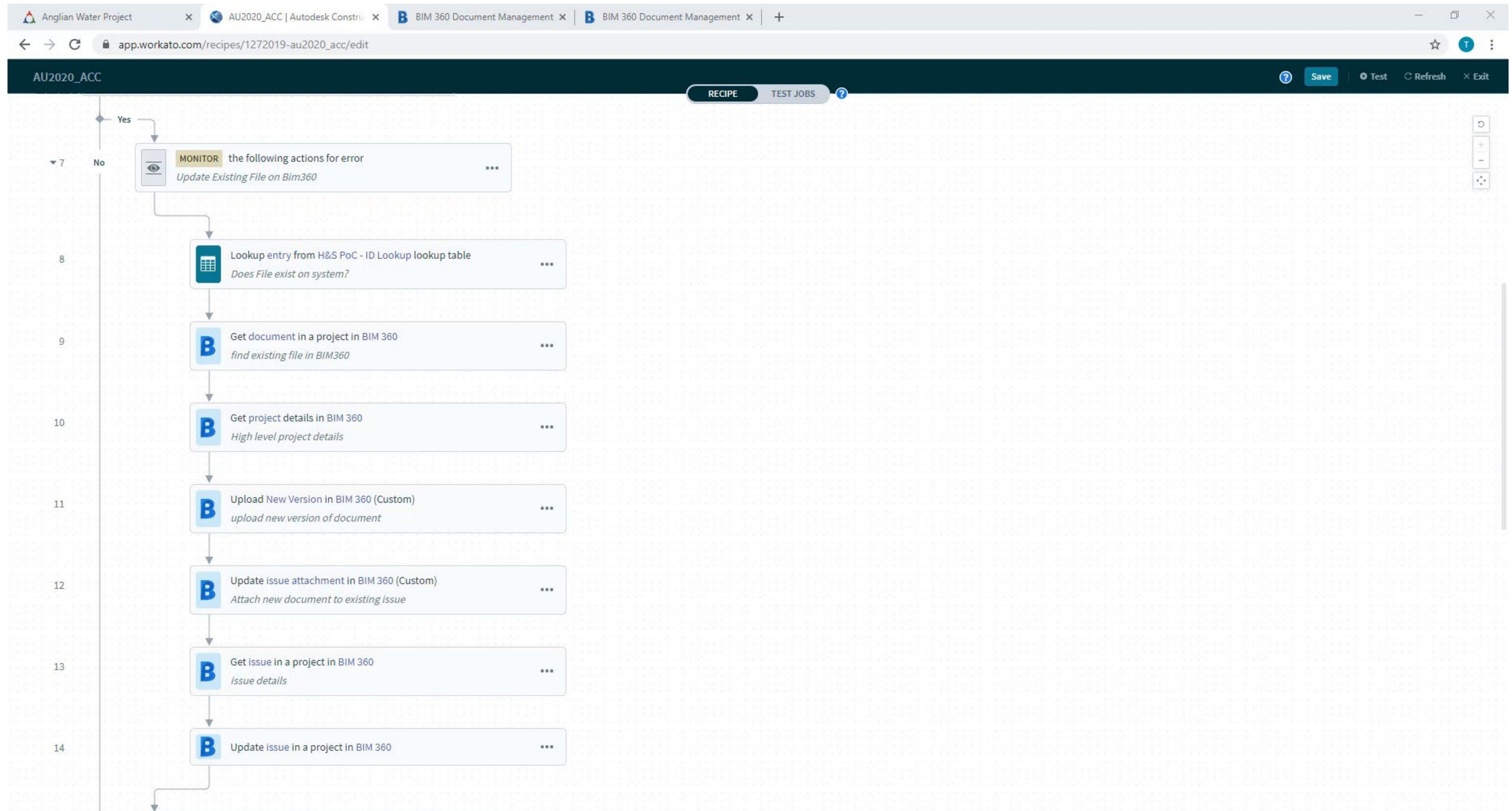


## Step 4 – Collect Data from Assemble



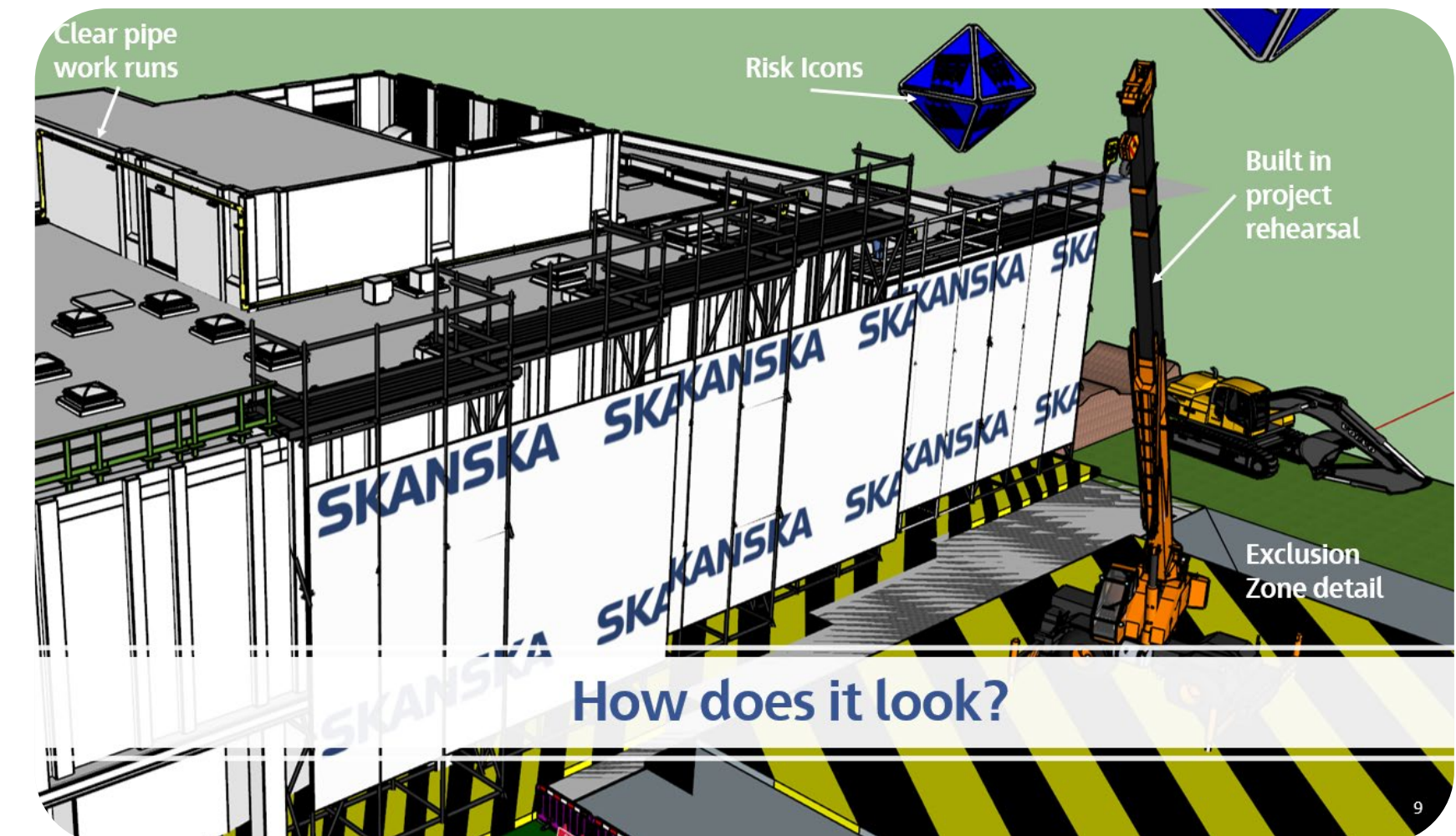
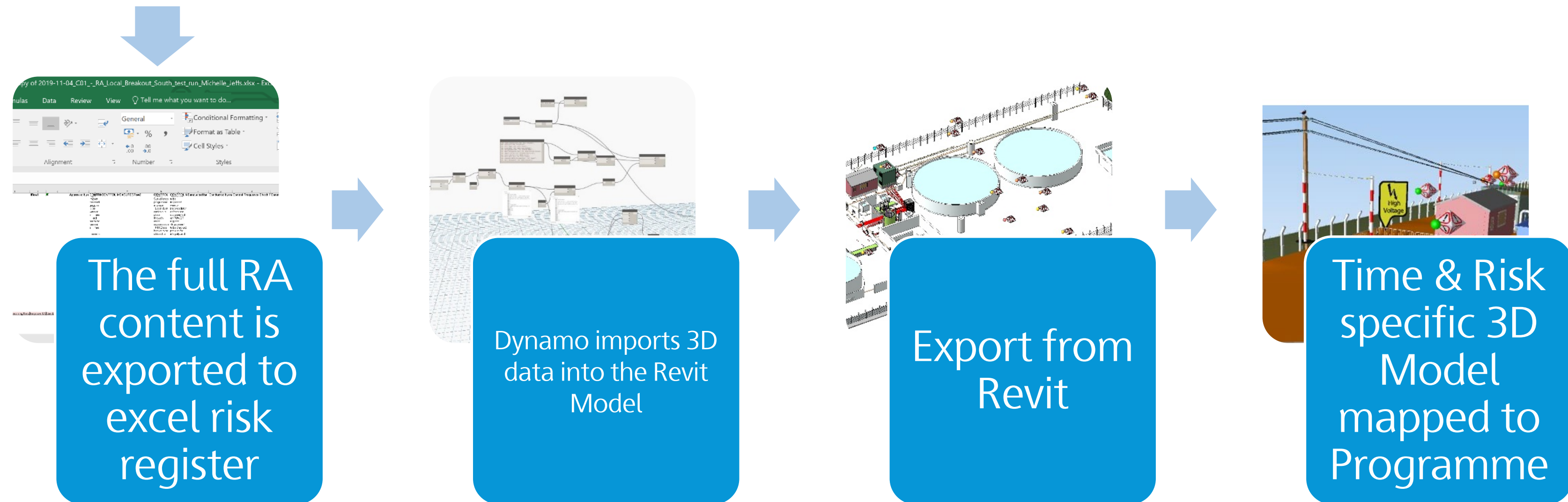


# Step 4 – Collect Data from Assemble



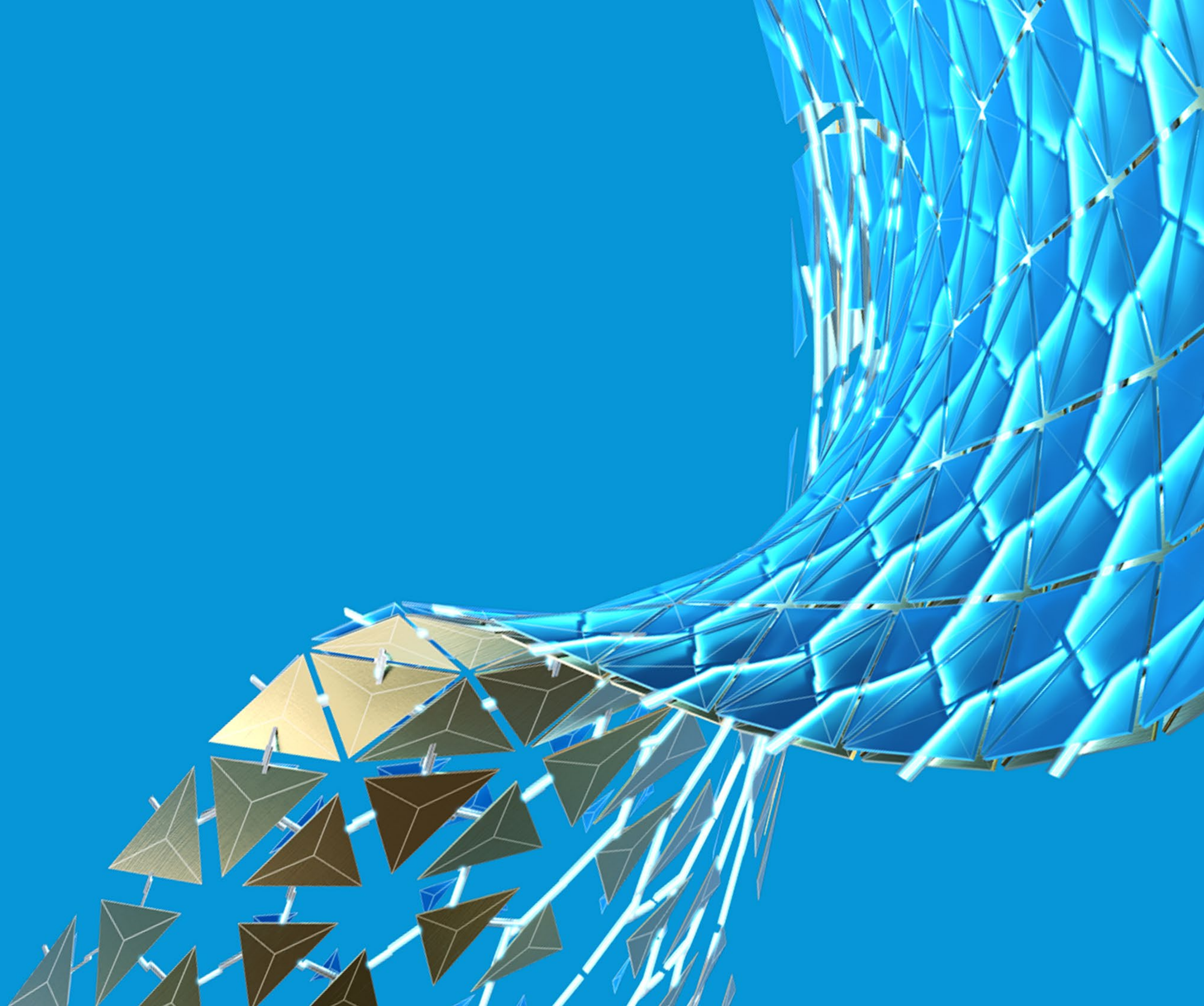


# Risk Example - Automate design of hazards





# Reflection





# Phases/Stages

## STEP 1

### COLLECT DATA

- Plangrid
- What3words

## STEP 2

### STORE DATA IN BIM 360

- Check that the data doesn't exist in BIM360
- Create a new storage location and BIM360 issue

## STEP 3

### UPDATE DATA IN BIM 360

- Take updated field reports from plangrid
- Update the data in BIM360

## STEP 4

### INTEGRATE WITH ASSEMBLE

- Link BIM360 and the field reports to a unique element within assemble and collect data from the model element to store in BIM360 Issue



# Don't be shy

If you have any questions, please ask them.

I will try to answer all questions as quickly as possible

My office hours are 9am – 5pm BST

Please like and share my page

Linkedin search for Tom Denby, would be great to grow my network of like-minded people.





Autodesk and the Autodesk logo are registered trademarks or trademarks of Autodesk, Inc., and/or its subsidiaries and/or affiliates in the USA and/or other countries. All other brand names, product names, or trademarks belong to their respective holders. Autodesk reserves the right to alter product and services offerings, and specifications and pricing at any time without notice, and is not responsible for typographical or graphical errors that may appear in this document.

© 2020 Autodesk. All rights reserved.

