

Future of Project Management

Cara Wilczynski

Customer Success Manager
Vision, Roadmap & Strategy

Safe Harbor

During the course of this presentation, we may make statements regarding future events and/or statements regarding planned or future development efforts for our existing or new products and services. We wish to caution you that such statements reflect our current expectations, estimates and assumptions based on factors currently known to us and that actual events or results could differ materially. Also, these statements are not intended to be a promise or guarantee of future delivery of products, services or features but merely reflect our current plans, which may change. Purchasing decisions should not be made based upon reliance on these statements. The statements made in this presentation are being made as of the time and date of its live presentation. We do not assume any obligation to update any statements we make to reflect events that occur or circumstances that exist after the date of this presentation.

Autodesk, the Autodesk logo, BIM 360, Assemble, PlanGrid and Building Connected are registered trademarks or trademarks of Autodesk, Inc., and/or its subsidiaries and/or affiliates in the USA and/or other countries. All other brand names, product names, or trademarks belong to their respective holders. Autodesk reserves the right to alter product and services offerings, and specifications and pricing at any time without notice, and is not responsible for typographical or graphical errors that may appear in this document. © 2020 Autodesk, Inc. All rights reserved.



Cara Wilczynski

Customer Success Manager
Vision, Roadmap, & Strategy





Agenda

- What does it mean to be a **Project Manager**?
- What **External Factors** affect you?
- What **Internal Factors** affect YOU and your team?
- How to **prepare yourself for the future...**







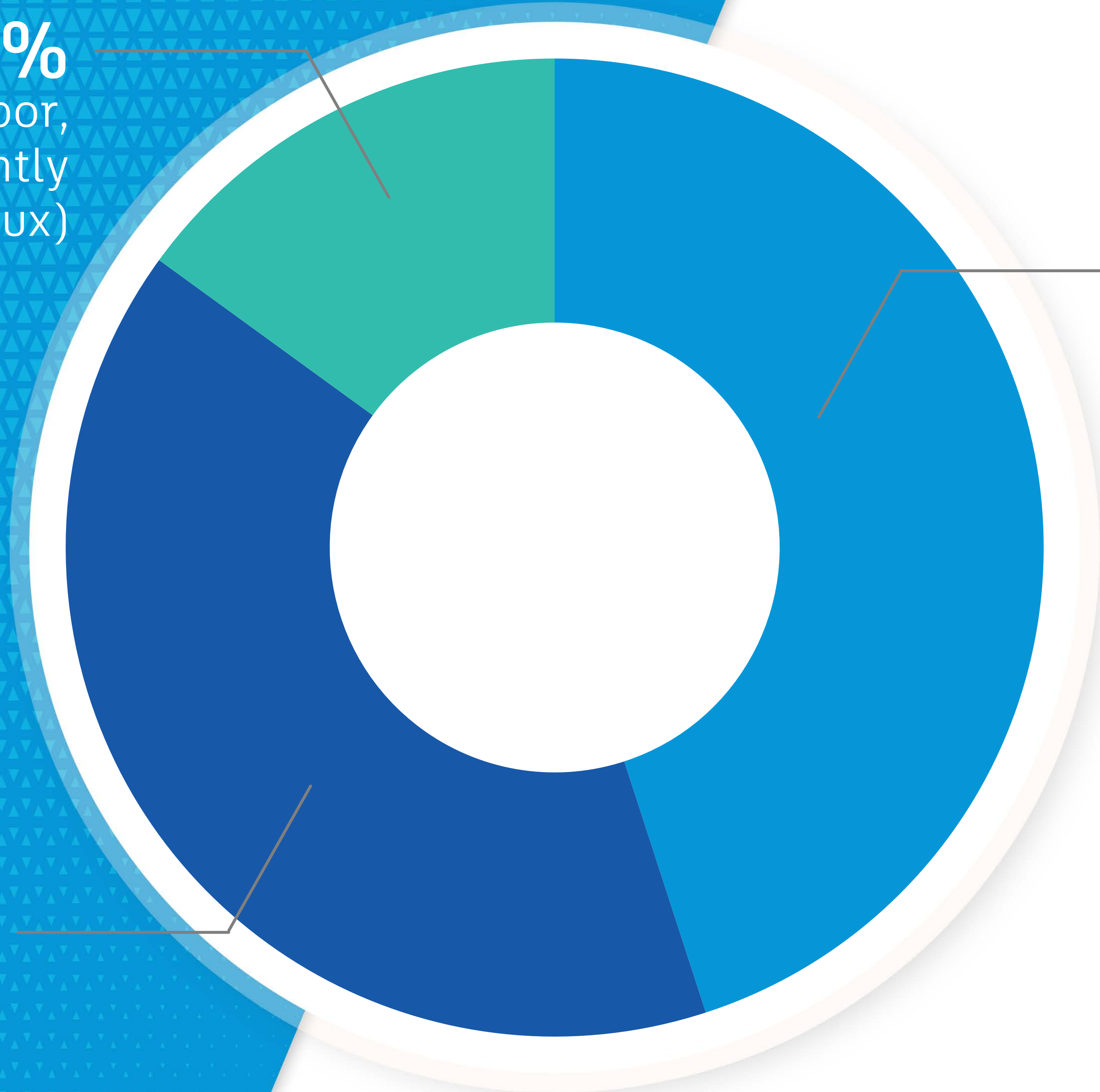



CHANGE ORDERS

15%
Other (Labor,
Designs constantly
in flux)

45%
Managing Client
Relationships

40%
Schedule Delays





The reality of
what we do
is rooted in
3 factors





Learn from
the Best



Unsung Heroes





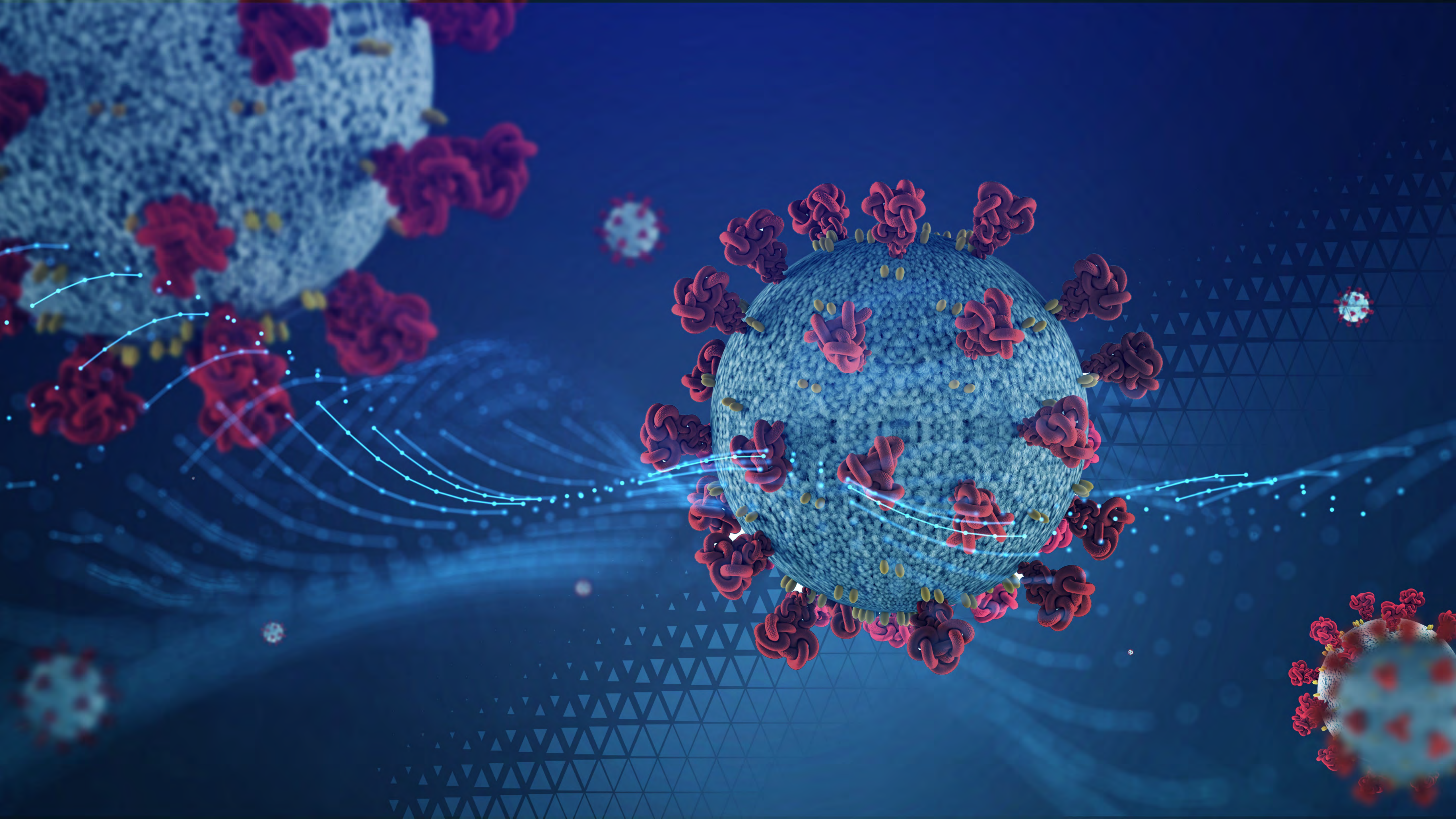
The role of the
Project Manager
is changing



**Technology
Skills**

**Emotional
Intelligence**







$$S = \frac{P}{1 - n \cdot d}$$
$$Vm = \sum_{i=1}^n \frac{CFi}{(1 + r)^i}$$
$$LC$$

Knowledge Transfer



Scanning

Searching

Password

Secure

Number

Owner Expectations





The future as a
Project Manager



Technology Stack



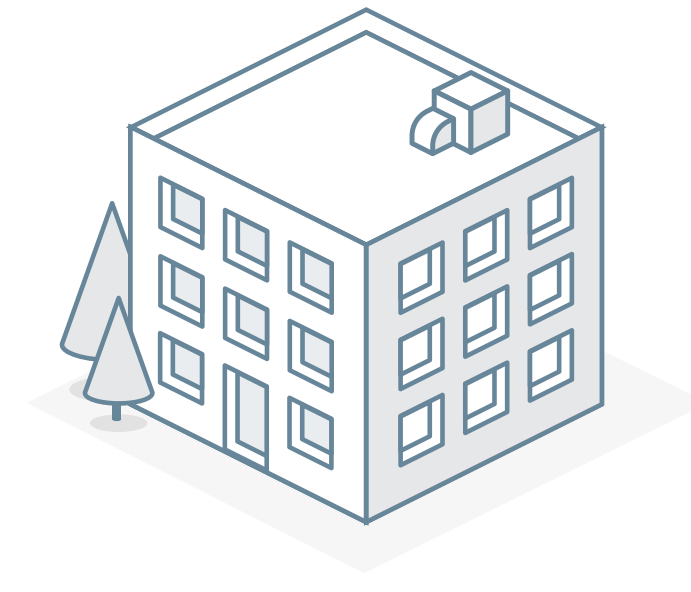
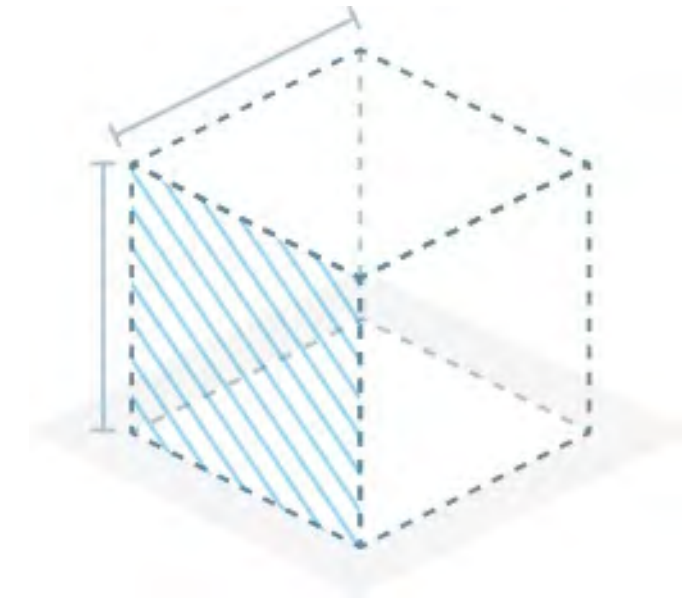
Connecting



**Decision-
making**



AUTODESK CONSTRUCTION CLOUD™



DESIGN

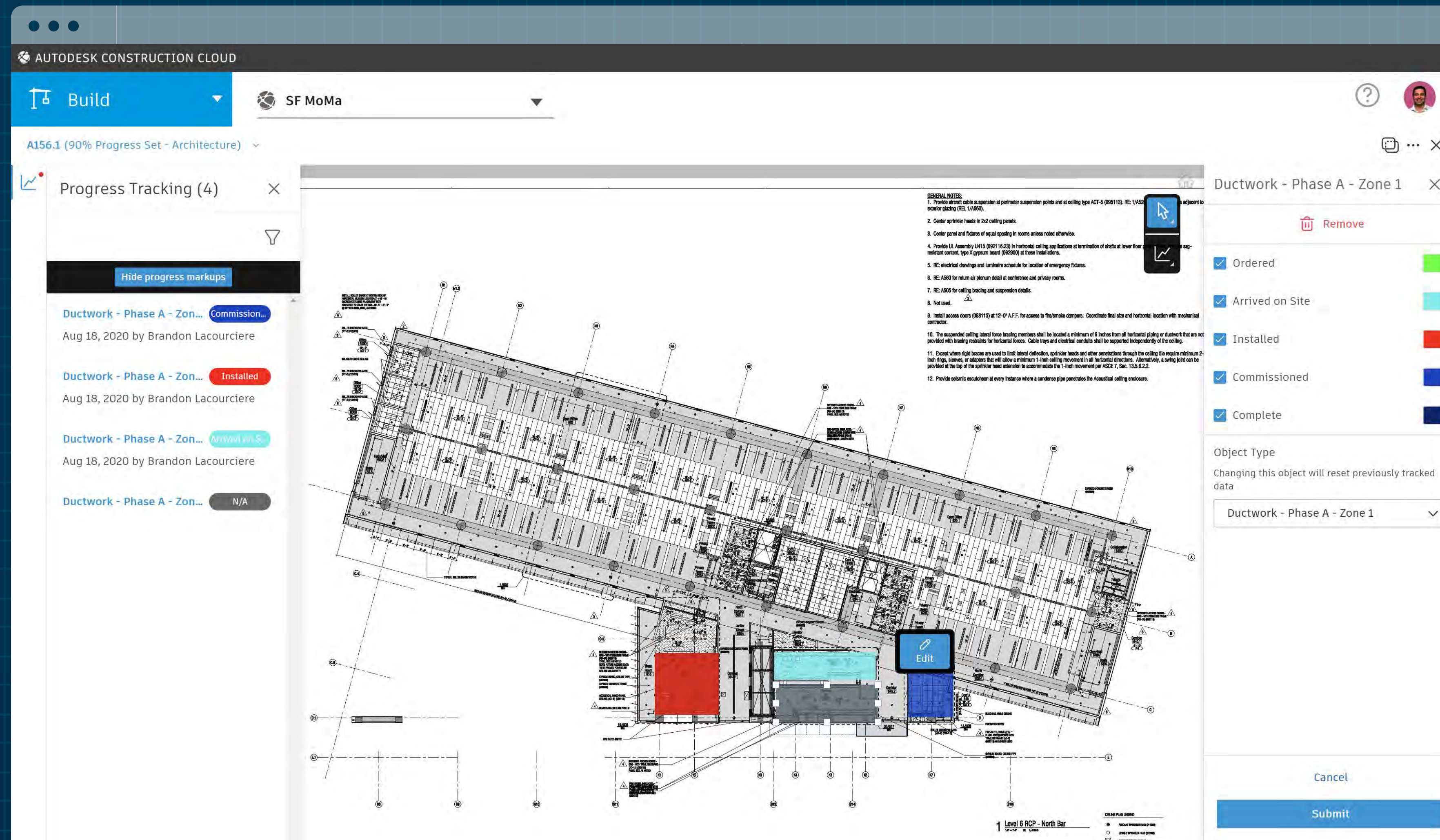
PLAN

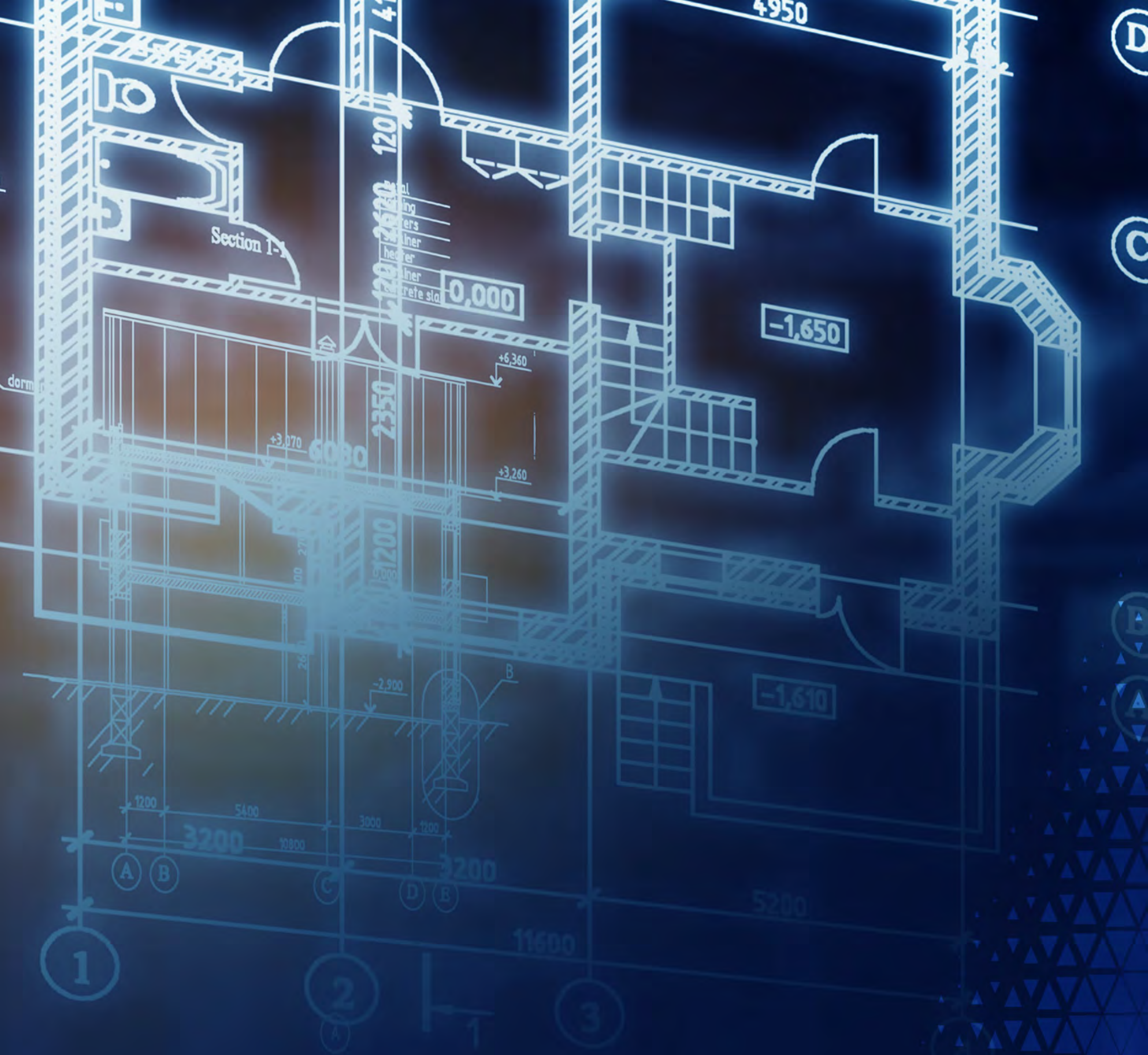
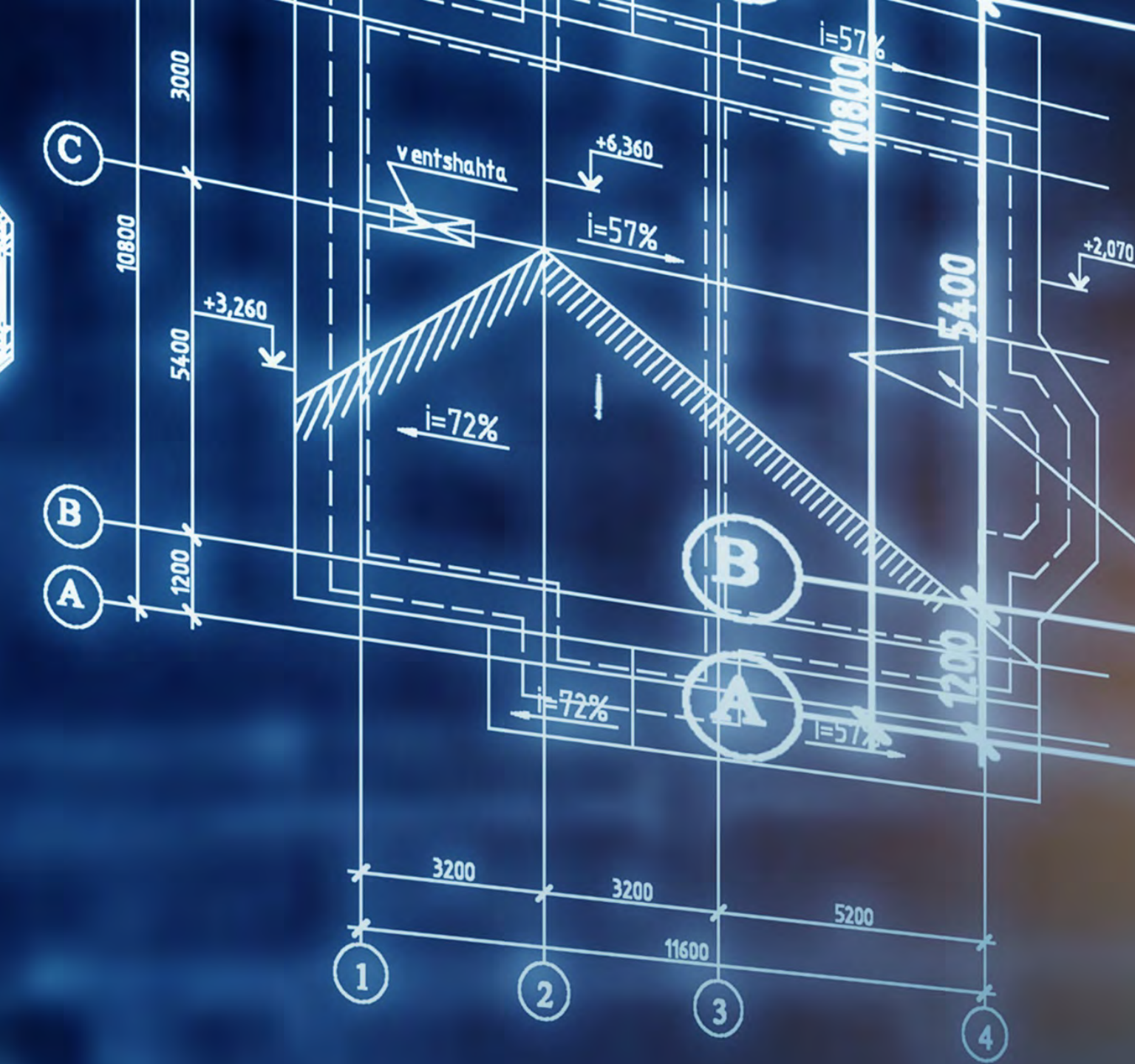
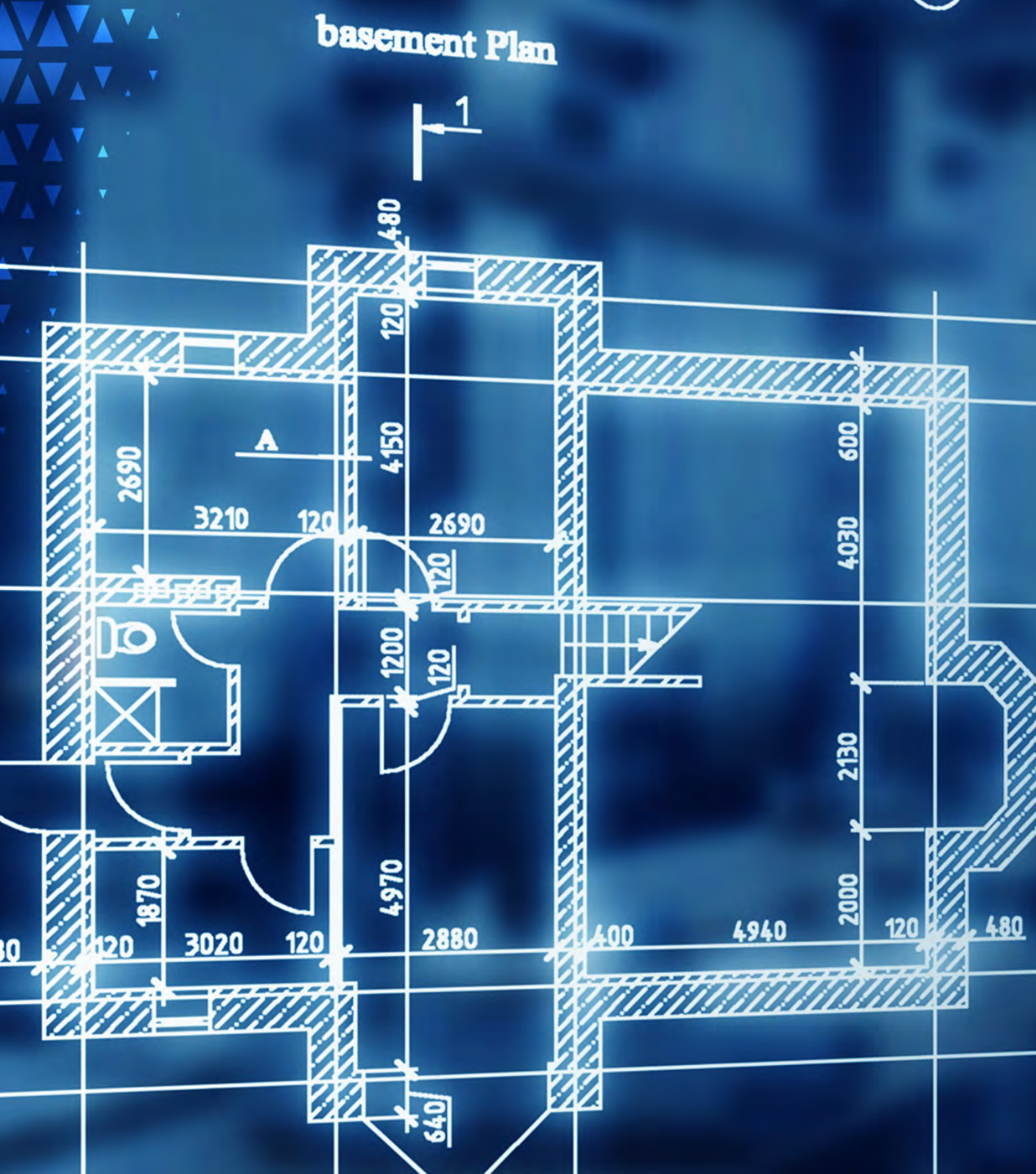
BUILD

OPERATE



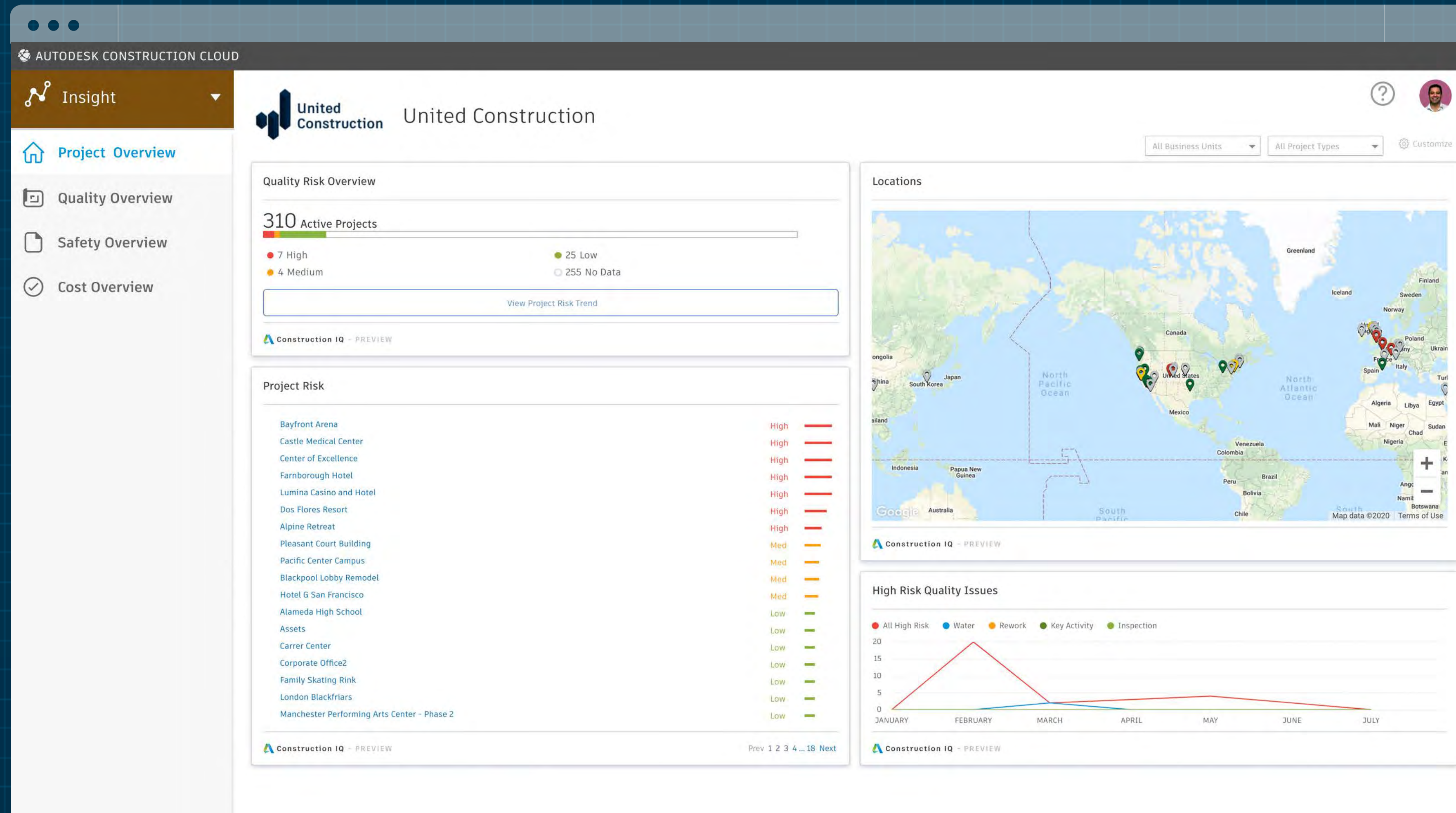
Progress Tracking





Data

Cross-Project Insights





Building Team Culture






Culture of Trust

Transparency

RFI
#4b2

Open

In Review

 You should provide an official response.

Submit official response

Details

Attachments

Activity

Cara Wilczynski

Jul 23, 2020 10:08 AM

Created this RFI in Open In Review status and set Ball in court to **Cara Wilczynski**.
ID set to #4b2


Cara Wilczynski

Jul 23, 2020 10:08 AM

Changed the cost impact to **Yes**


Cara Wilczynski

Oct 13, 2020 6:38 PM

 Fabrication-Miller-Electric-36.jpg
Attachment added.

Cara Wilczynski


Oct 13, 2020 6:39 PM

 fall pro.jpg
Attachment added.

Cara Wilczynski

Oct 13, 2020 6:40 PM

@Brandon LaCourciere please see attached

 Add a comment, use '@' to mention...

Recent Activity

View All

Today

✓

Christine Acker created an issue
(# 197) Door Height
2 hours ago

✓

Courtney Kyle created an issue
(# 196) Commissioning
6 hours ago

Yesterday

✓

Taylor Dean created an issue
(# 195) Commissioning

Oct 9, 2020

✓

Taylor Dean created 2 issues
See issues

The background is a high-angle, night-time view of a city skyline, likely Dubai, featuring prominent skyscrapers like the Burj Khalifa. The city is illuminated with warm yellow and orange lights. Overlaid on this is a complex network of glowing blue and purple lines that connect various points across the city, suggesting a digital or data network. In the top left corner, there is a pattern of small, light blue triangles arranged in a grid-like fashion.

Construction Transformation





Autodesk and the Autodesk logo are registered trademarks or trademarks of Autodesk, Inc., and/or its subsidiaries and/or affiliates in the USA and/or other countries. All other brand names, product names, or trademarks belong to their respective holders. Autodesk reserves the right to alter product and services offerings, and specifications and pricing at any time without notice, and is not responsible for typographical or graphical errors that may appear in this document.