



Project Management 101: Basics of ACC

CS502301

Mauricio Irastorza 
Technical Solutions Executive | ACS

Marcos Harano 
Technical Solutions Executive | ACS

Julio Palma 
Technical Sales Specialist | WWS



Safe Harbor Statement

We may make forward-looking statements regarding planned or future development efforts for our existing or new products and services and statements regarding our strategic priorities. These statements are not intended to be a promise or guarantee of business results, future availability of products, services or features but merely reflect our current plans and are based on factors currently known to us. These planned and future development efforts may change without notice. Purchasing and investment decisions should not be made based upon reliance on these statements.

A discussion of factors that may affect future results is contained in our most recent Form 10-K and Form 10-Q filings available at www.sec.gov, including descriptions of the risk factors that may impact us and the forward-looking statements made in these presentations. Autodesk assumes no obligation to update these forward-looking statements to reflect events that occur or circumstances that exist or change after the date on which they were made. If this presentation is reviewed after the date the statements are made, these statements may no longer contain current or accurate information.

This presentation also contains information, opinions and data supplied by third parties and Autodesk assumes no responsibility for the accuracy or completeness of such information, opinions or data, and shall not be liable for any decisions made based upon reliance on any such information, opinions or data.

Autodesk's partners frequently compete against each other in the marketplace, and it is critically important that all participants in this meeting observe all requirements of antitrust laws and other laws regarding unfair competition. Autodesk's long insistence upon full compliance with all legal requirements in the antitrust field has not been based solely on the desire to stay within the bounds of the law, but also on the conviction that the preservation of a free and vigorous competitive economy is essential to the welfare of our business and that of our partners, the markets they serve, and the countries in which they operate. It is against the policy of Autodesk to sponsor, encourage or tolerate any discussion or communication among any of its partners concerning past, present or future prices, pricing policies, bids, discounts, promotions, terms or conditions of sale, choice of customers, territorial markets, quotas, inventory, allocation of markets, products or services, boycotts and refusals to deal, or any proprietary or confidential information. Communication of this type should not occur, whether written, oral, formal, informal, or "off the record." All discussion at this meeting should be strictly limited to presentation topics.

PLEASE NOTE: AU content is proprietary. Do Not Copy, Post or Distribute without expressed permission.









Change Order

**Payment
Application**

RFIs

Inspections



Productivity in Construction

Teams

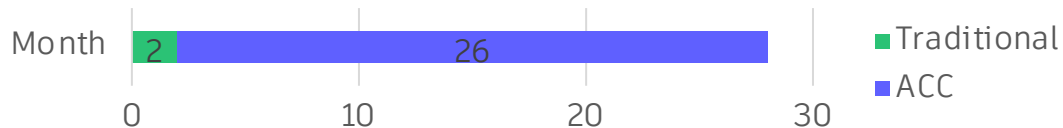
35%

of time is wasted on non-optimal activities
(14+ hours/person/week)

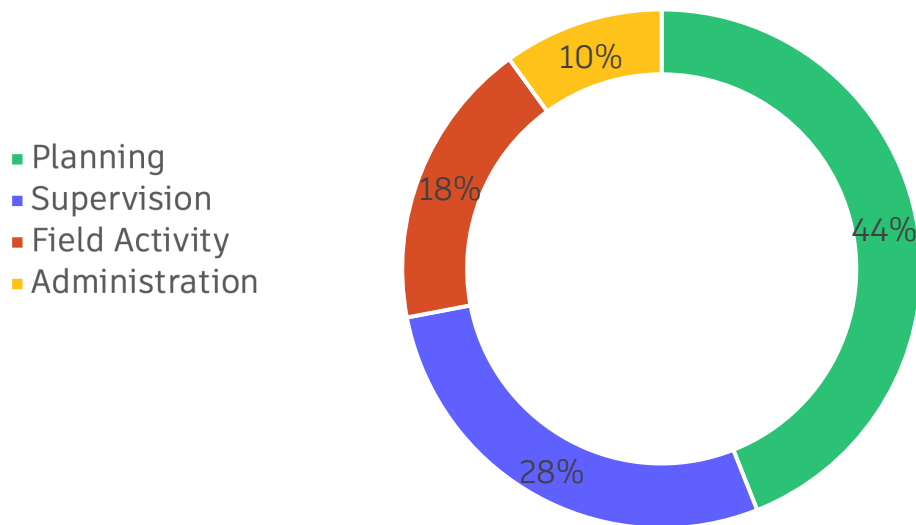


Source: Construction Disconnected – FMI Report

On Site Activities

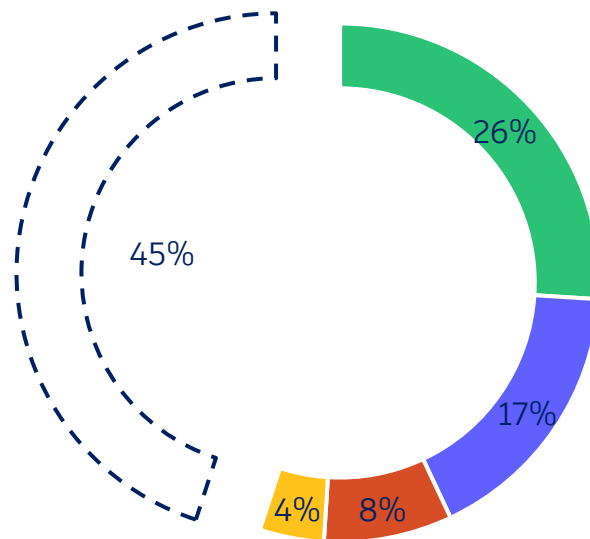


Traditional



87 hours

ACC



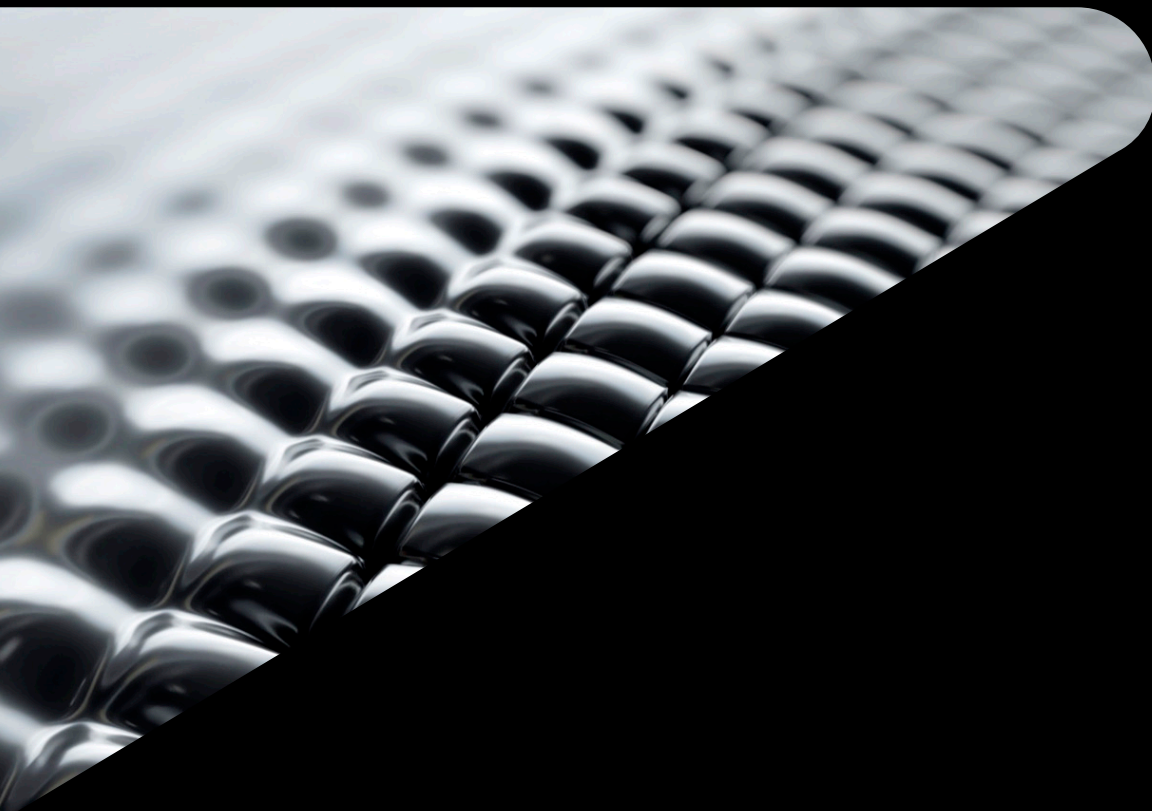
47.5 hours

Agenda

CS502301

- Project Management
- Autodesk Construction Cloud
- Triple Constraint Theory in PM
 - Scope
 - Time
 - Cost





Project Management

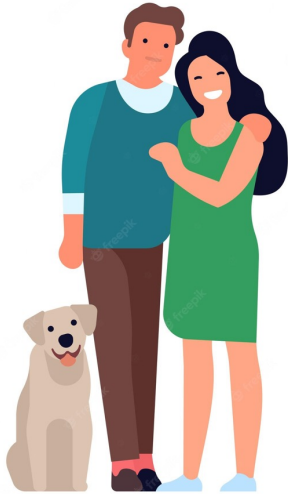
Introduction

Breakdown Structures

For a good night of sleep

OBS

- Organization Breakdown Structure



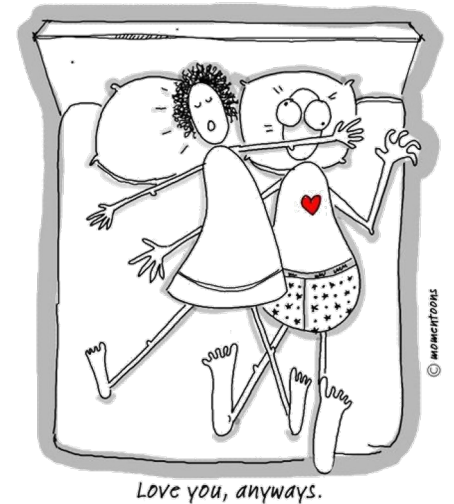
WBS

- Work Breakdown Structure



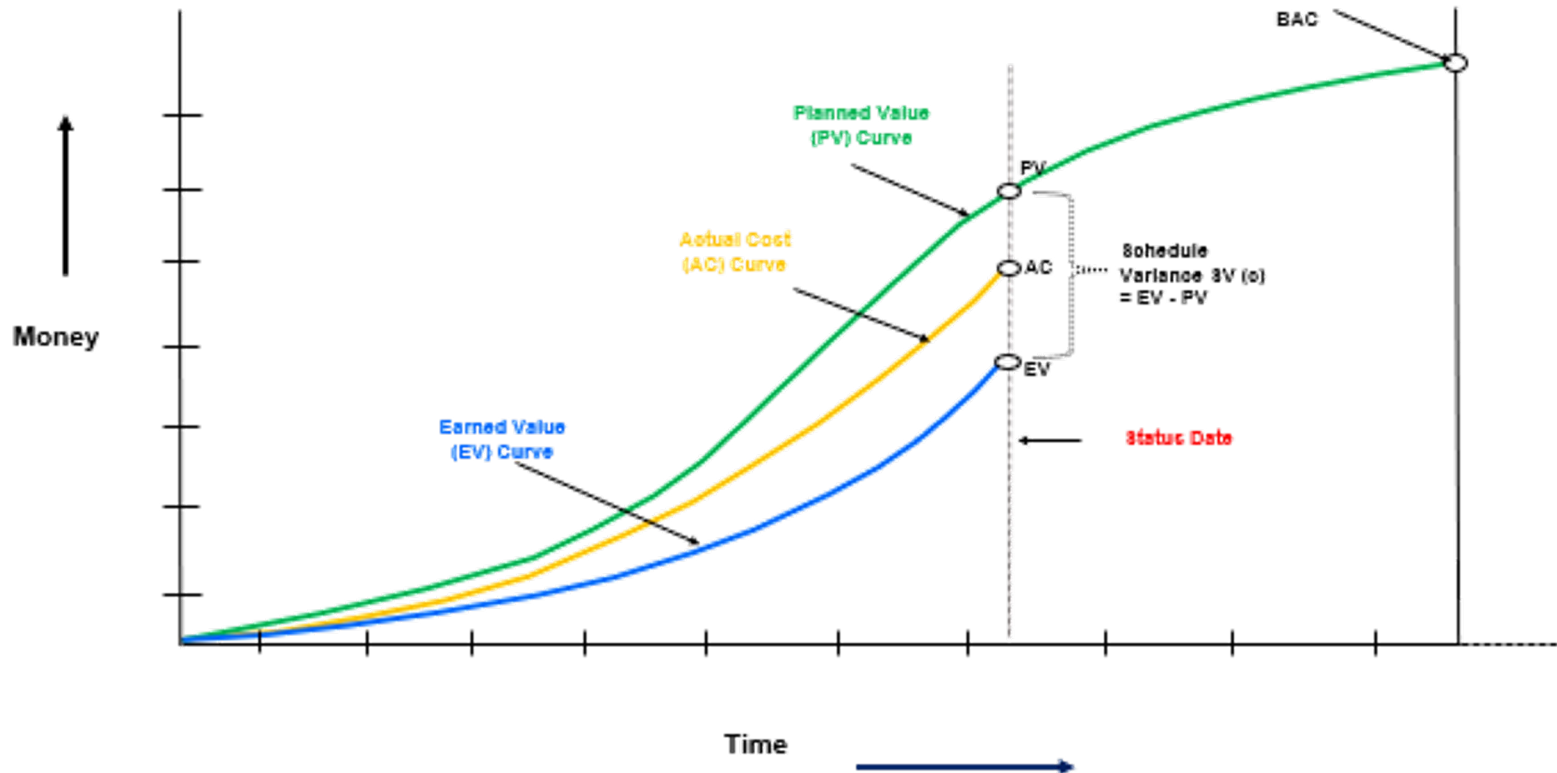
LBS

- Location Breakdown Structure



Earned value management

S - Curve



Principles in Construction

How to efficiently handle:

- People
- Materials
- Equipment
- Budget
- Location
- Information

To achieve

- Budget Accuracy
- Scheduled time
- Desired quality level



A close-up, black and white photograph of a woven mesh texture, possibly a metal screen or a fine fabric, is shown on the left side of the slide. The mesh is composed of small, rounded, interlocking elements that create a complex, three-dimensional pattern. The lighting highlights the texture, with some areas appearing brighter and others in shadow. The image is partially obscured by a black diagonal shape that separates it from the text on the right.

Autodesk Construction Cloud

Introduction

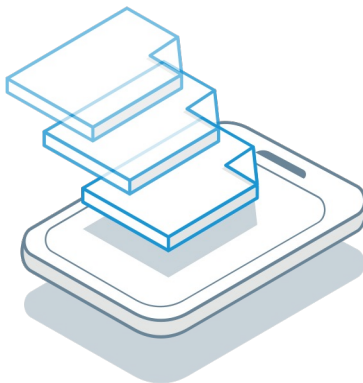
The right tool for the job is...



Adaptable

For changing conditions

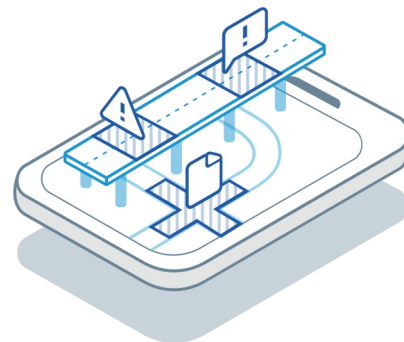
Stronger connections between teams and products allow processes to be more adaptable



Easy-to-use

For all levels of BIM expertise

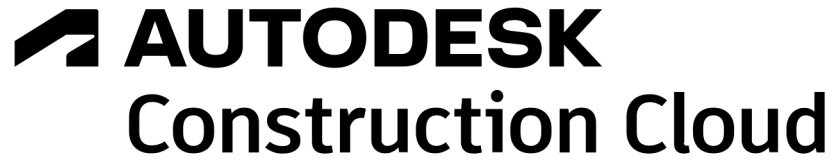
Intuitive workflows with data available for each phase in a common data environment



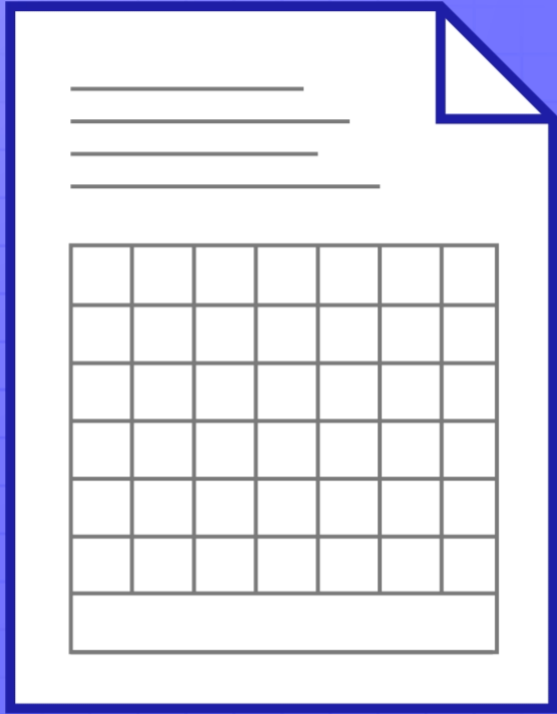
Automated

Removing time consuming tasks

Capture change, clash models, and communicate decisions, assisted by simple automation



- 01. DIGITIZE**
- 02. INTEGRATE**
- 03. OPTIMIZE**



01. DIGITIZE



Document Management



Collaboration



Automated Workflows



Project Management

02. INTEGRATE

03. OPTIMIZE



01. DIGITIZE

02. INTEGRATE



Field information

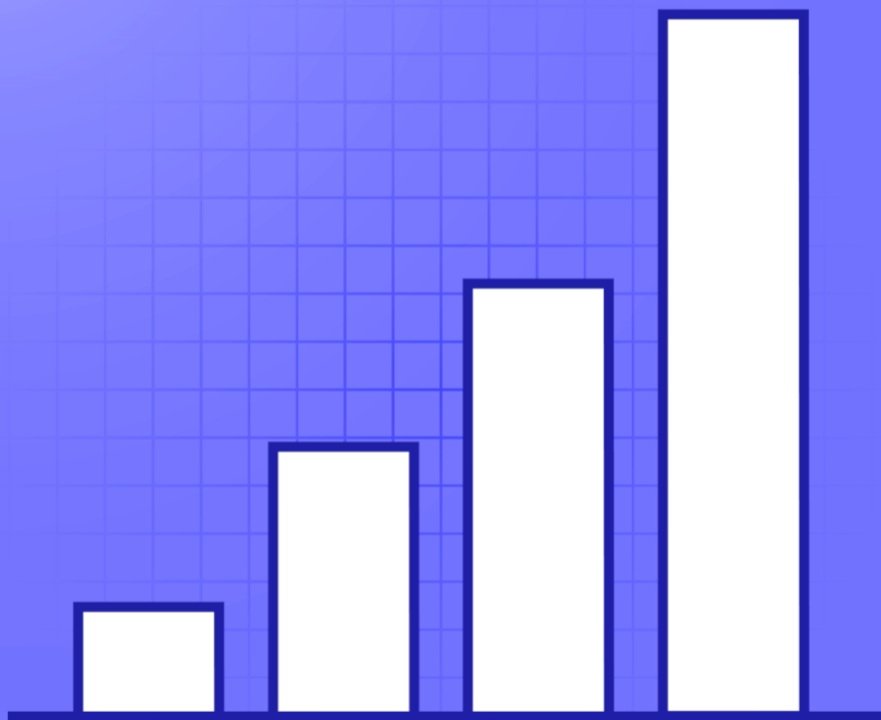


Change Management



Printed formats to
mobile devices

03. OPTIMIZE



01. DIGITIZE

02. INTEGRATE

03. OPTIMIZE

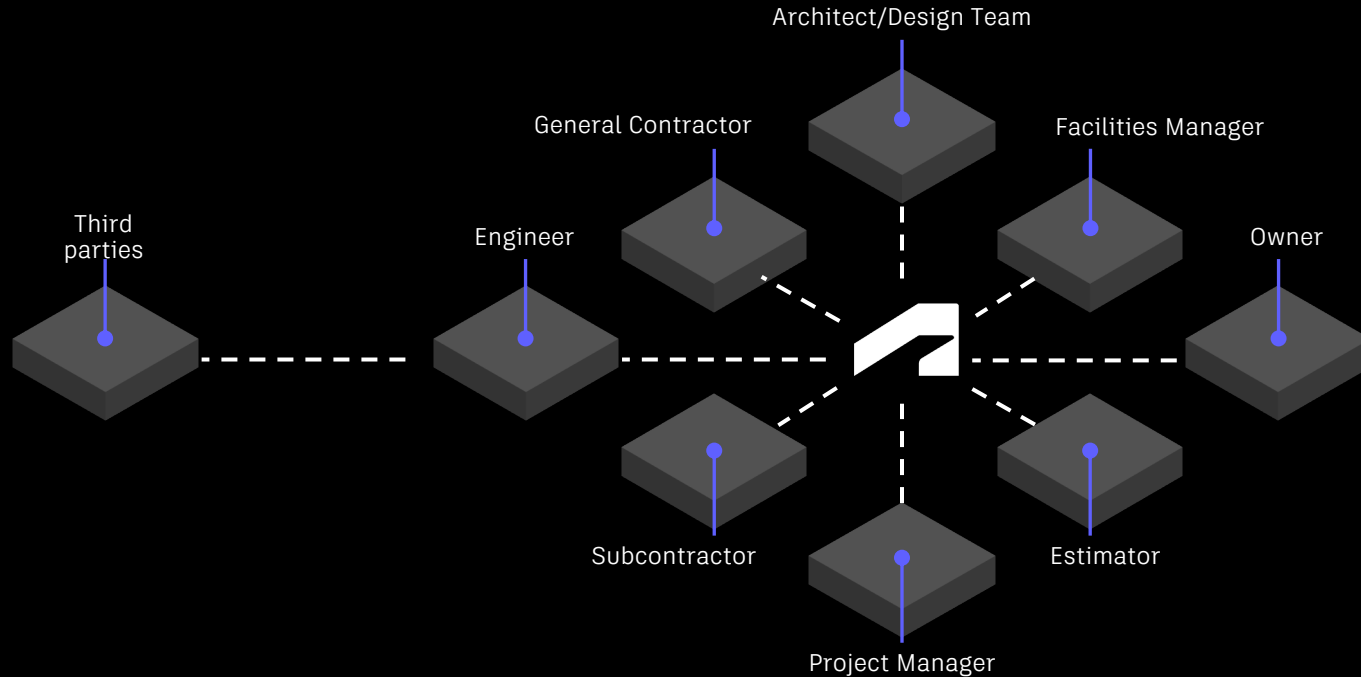


Traceability



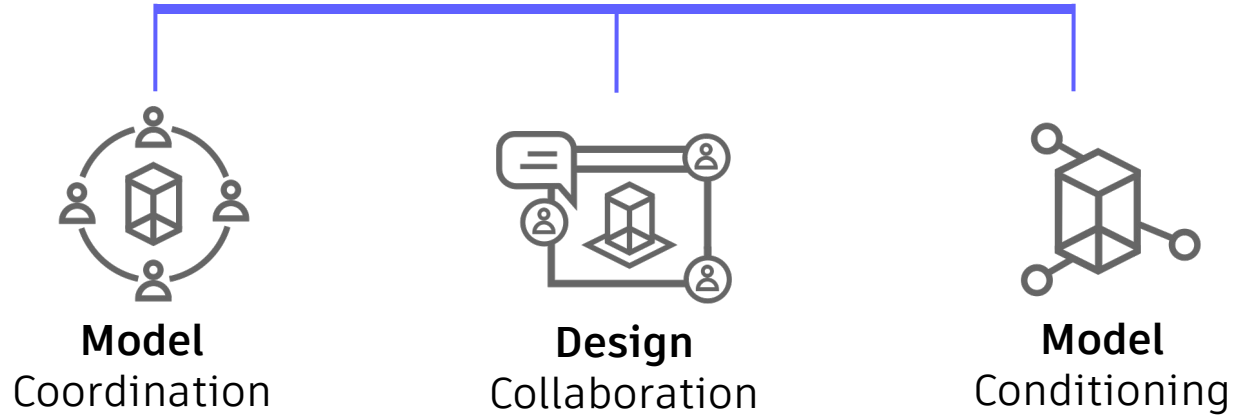
Data Analytics

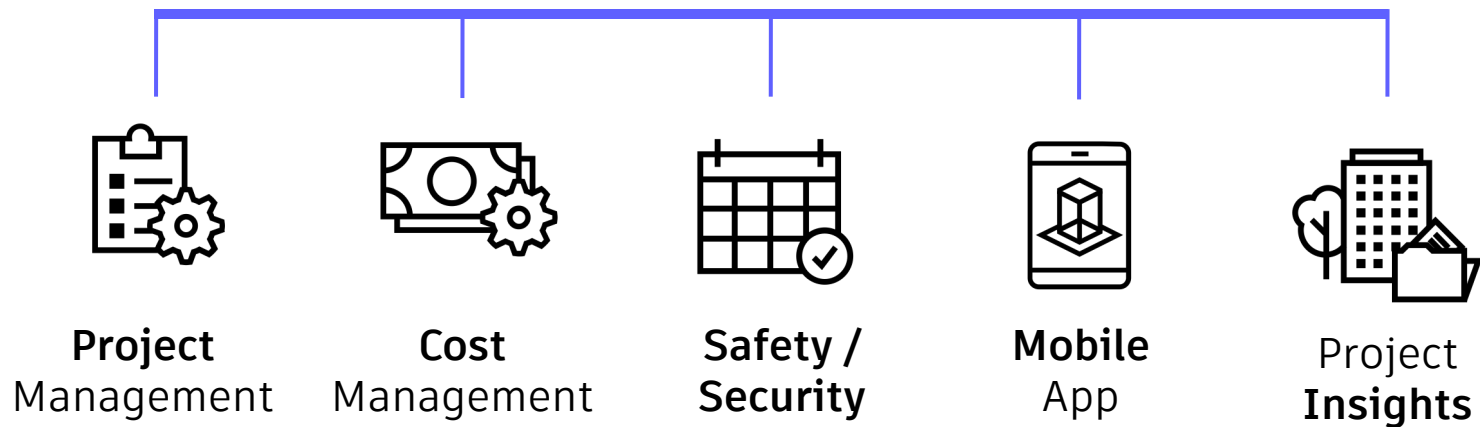
Common Data Environment

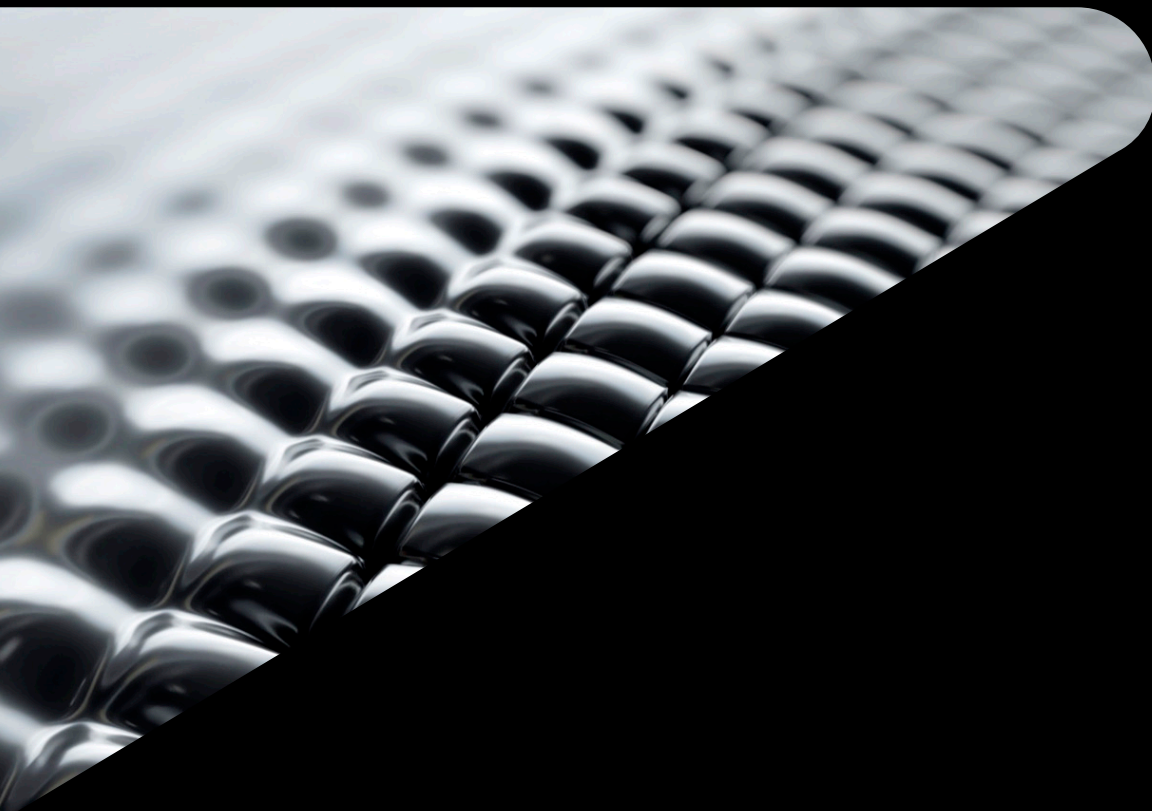




AUTODESK BIM Collaborate







Triple Constraint Theory in PM

Introduction

Principles in Construction

How to efficiently handle:

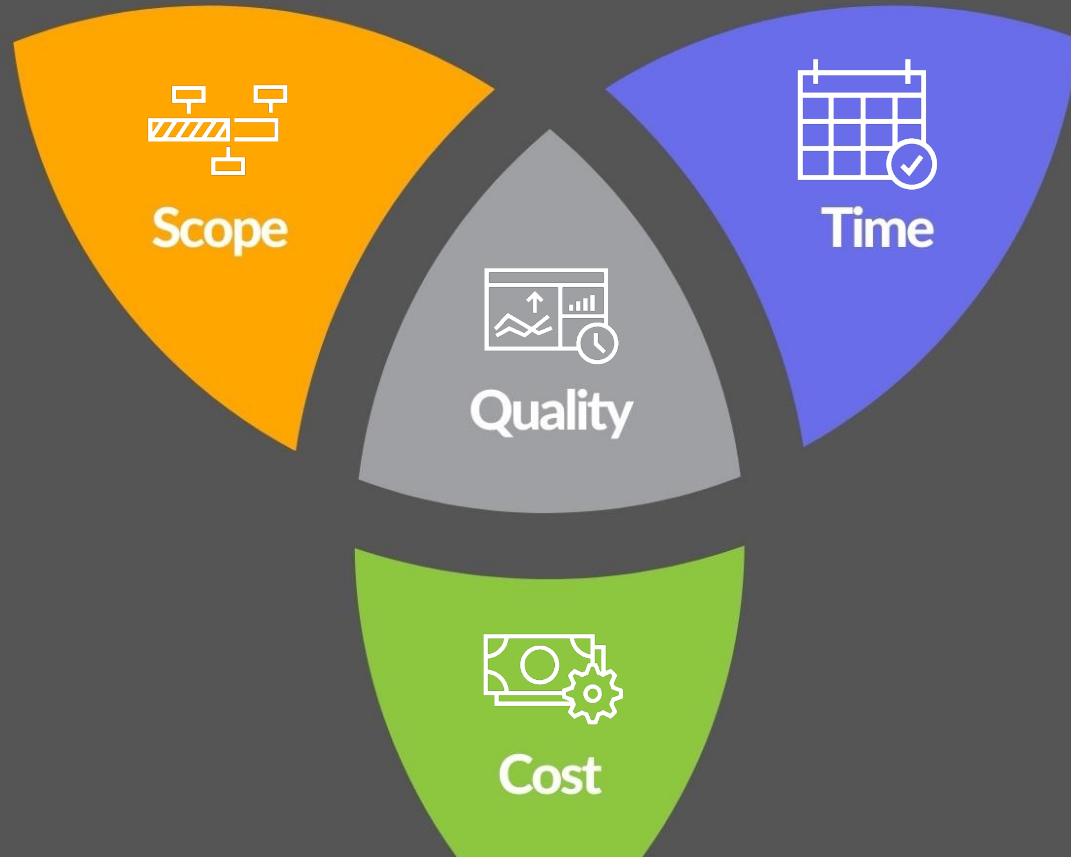
- People
- Materials
- Equipment
- Budget
- Location
- Information

To achieve

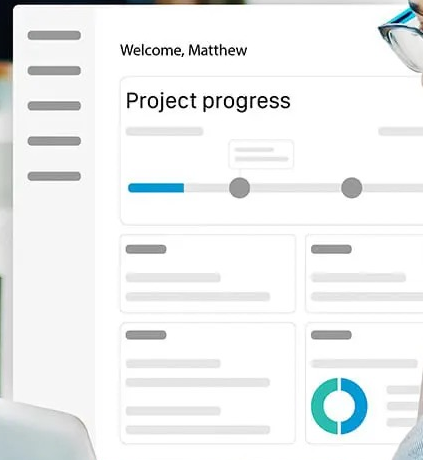
- Budget Accuracy
- Scheduled time
- Desired quality level



Triple constraint theory



Where we are and Where to go?



How you got to AU



Scope

Design & Precon

Scope Management during design and coordination



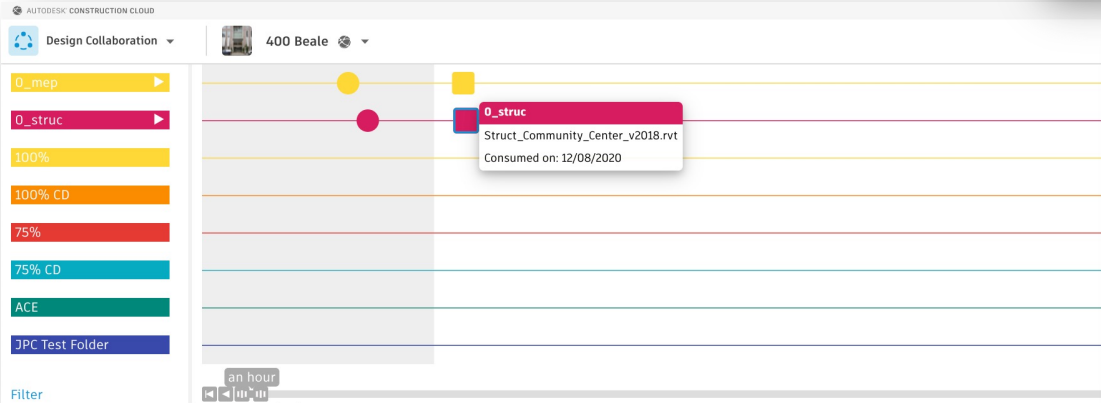
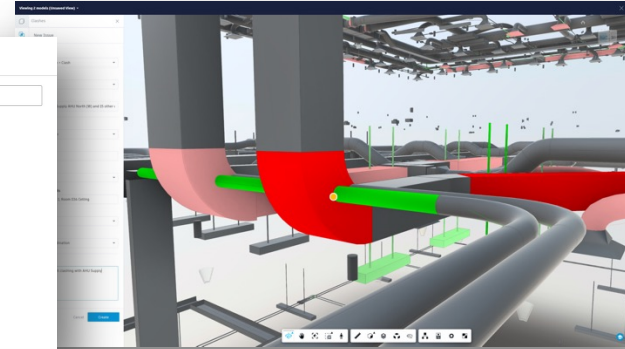
Design & Precon

Scope Management during design and coordination

Changes are the nature of design and engineering.

Select items to watch

- Search models
- Struct_Community_Center_v2021.rvt
 - Floors
 - Landings
 - Runs
 - Stairs
 - Structural Columns
 - Structural Foundations
 - Structural Framing
 - Supports
 - Walls
 - Struct_Community_Center_v2018.rvt



Search for models

Select a view

All 13 models

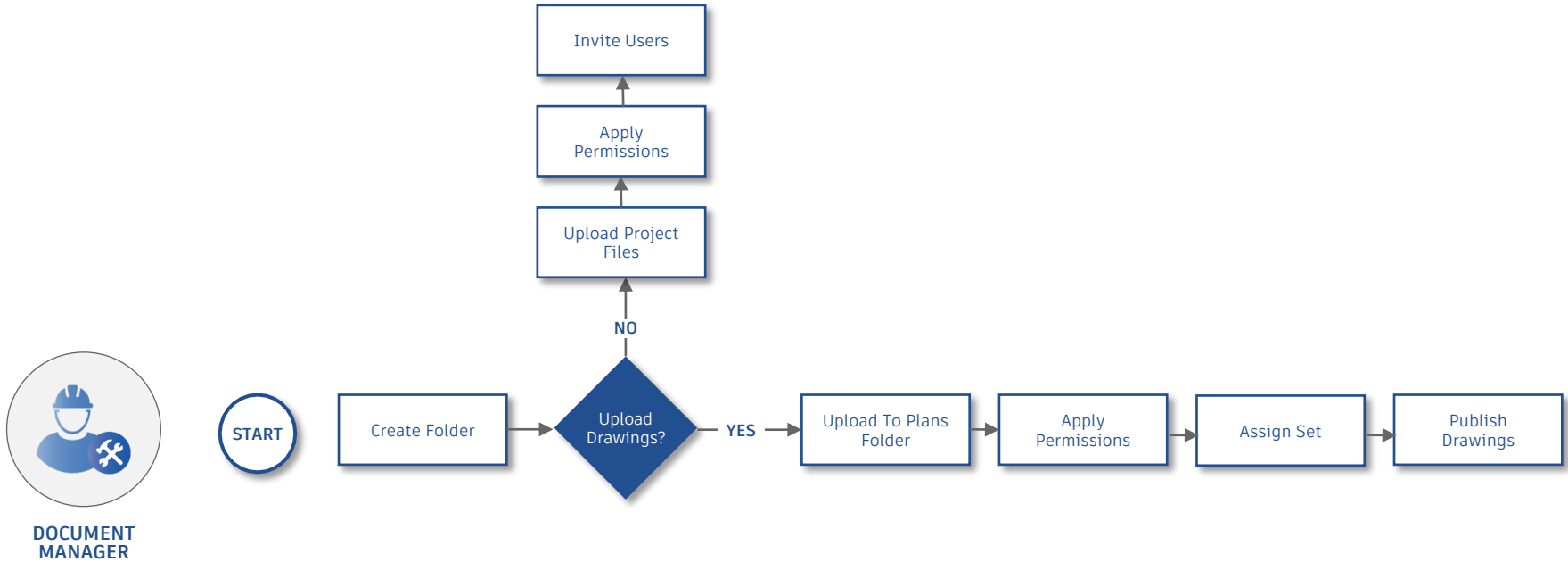
R21 LTV - 3D - Clean	R21 LTV - COORDINATION	R21 LTV - ELECTRICAL	R21 LTV - FIRE-PRO	R21 LTV - MECH-DUCT	R21 LTV - MECH-PIPE	R21 LTV - MECH-PLUMBING	R21 LTV - 3D-SITE	R21 LTV - ANAL. MODEL	R21 LTV - COORDINATION	R21 LTV - ANAL. MODEL	R21 LTV - STEEL DETAILING	R21 LTV - 3D-6666
R21 LTV Housing - Arch.rvt - 3D - Clean	4833 clash groups											
R21 LTV Housing - Arch.rvt - 3D - Clean	4833 clash groups	3698	1146	70	695	148	719		409	1098	1096	722
R21 LTV Housing - Arch.rvt - 3D - Clean	4833 clash groups	2724	1159	79	696	149	724		422	1218	1216	836
R21 LTV Housing - Arch.rvt - 3D - Clean	4833 clash groups	1554	1560	19	56	7	51		48	123	123	74
R21 LTV Housing - Arch.rvt - 3D - Clean	4833 clash groups	81	81	16	21	7	11		16	18	18	17
R21 LTV Housing - Arch.rvt - 3D - Clean	4833 clash groups	883	883	49	35	67	167		53	96	96	91
R21 LTV Housing - Arch.rvt - 3D - Clean	4833 clash groups	270	268	5	16	71	21		98	130	130	37
R21 LTV Housing - Arch.rvt - 3D - Clean	4833 clash groups	2040	2039	63	17	267	27		445	795	795	155
R21 LTV Housing - Arch.rvt - 3D - Clean	4833 clash groups											
R21 LTV Housing - Arch.rvt - 3D - Clean	4833 clash groups	277	281	13	12	27	17		295	295	288	293
R21 LTV Housing - Arch.rvt - 3D - Clean	4833 clash groups	571	576	61	15	32	36		387	302	256	321
R21 LTV Housing - Arch.rvt - 3D - Clean	4833 clash groups	568	573	61	15	32	36		387	241	251	316
R21 LTV Housing - Arch.rvt - 3D - Clean	4833 clash groups	611	616	55	14	43	32		397	391	385	340

Design & Precon

Scope Management during design and coordination



Document Management Workflow



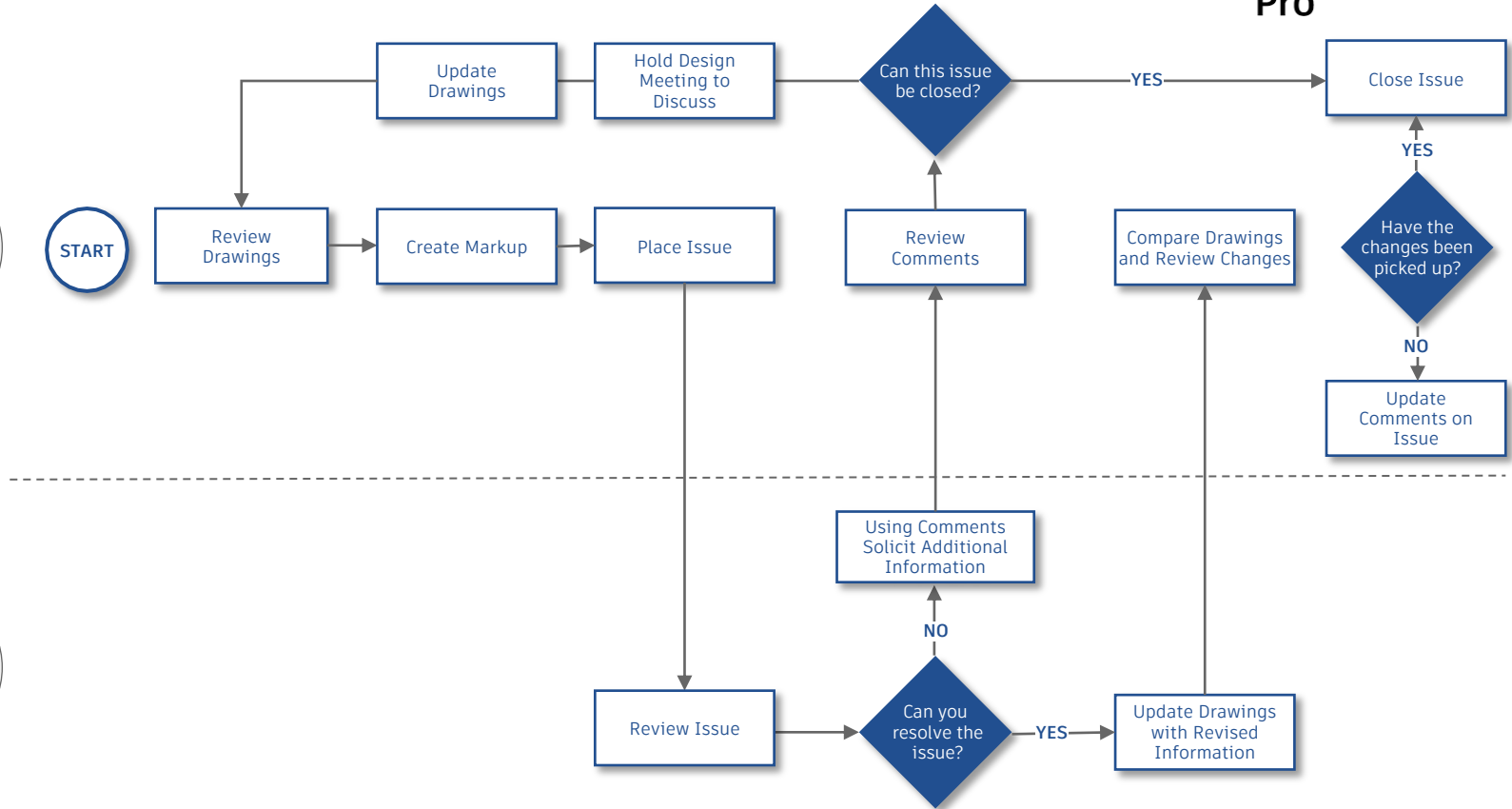
Design Review Workflow



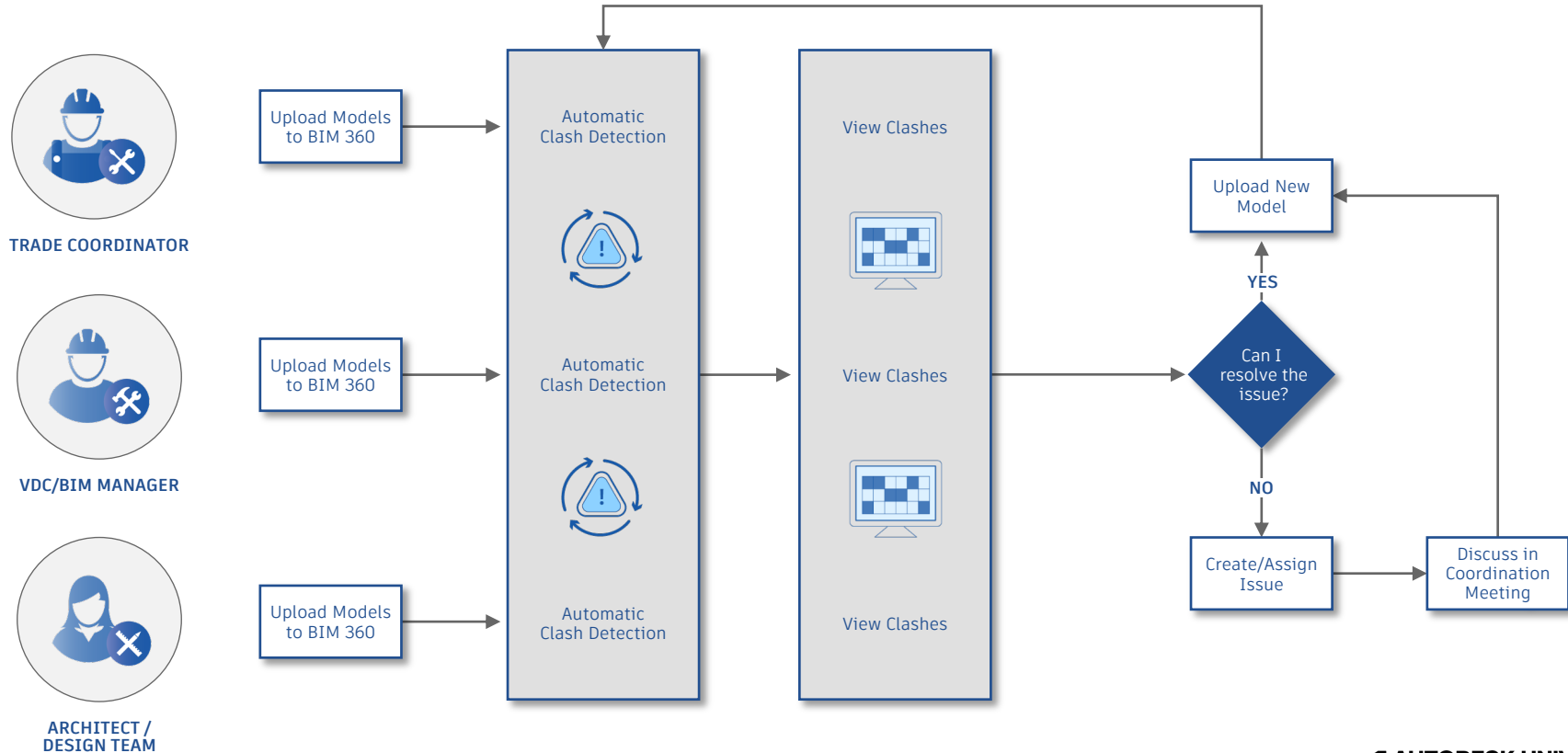
REVIEWER



APPROVER



Model Coordination Workflow



Approval Workflow



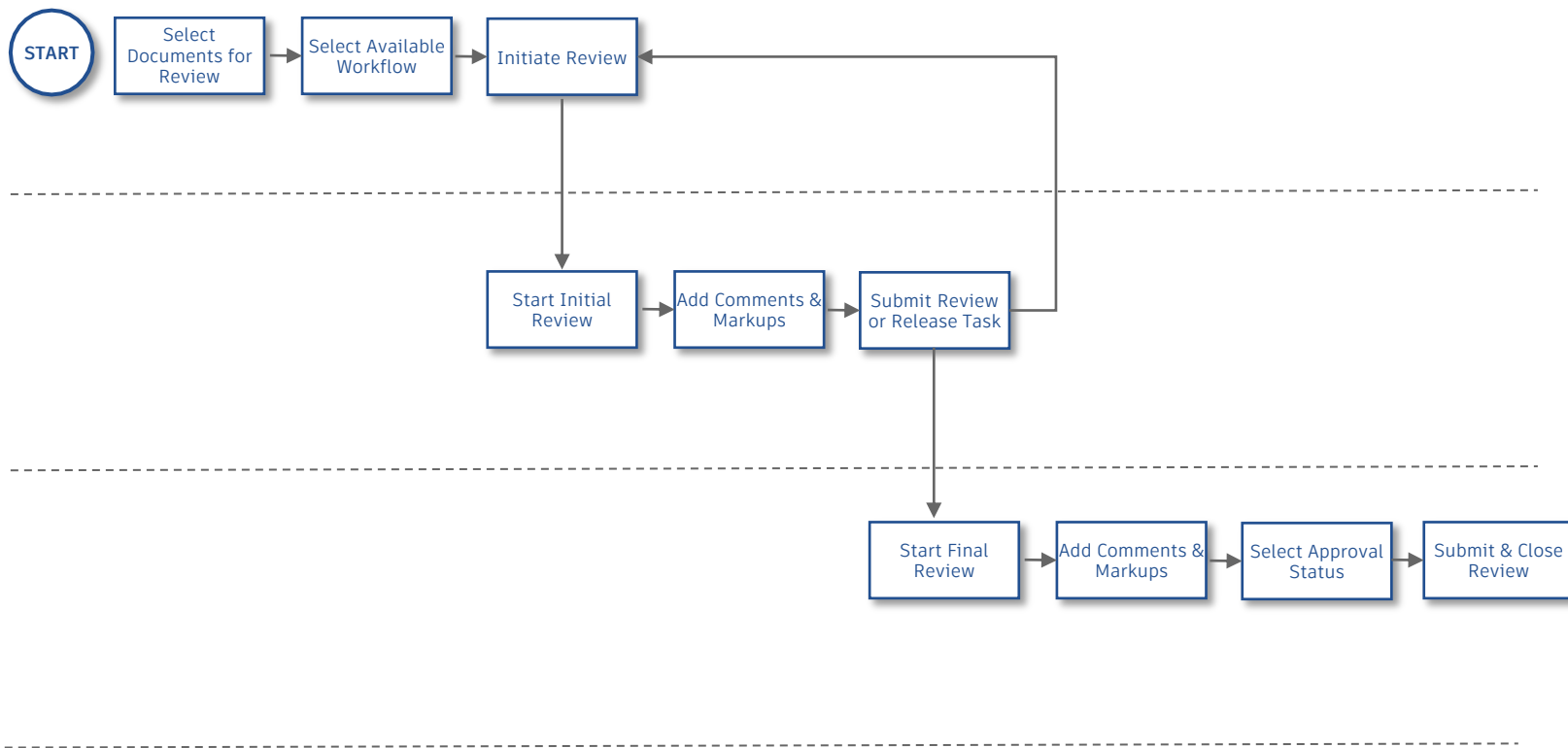
INITIATOR

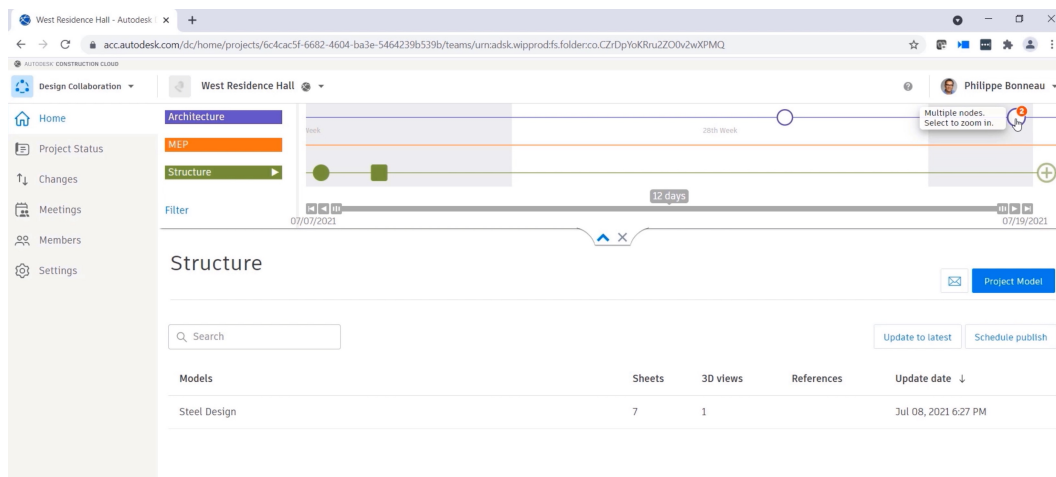


REVIEWER



APPROVER





Clashes - Autodesk Model Coordination

acc.autodesk.com/model/clashes/projects/6c4cac5f-6682-4604-ba3e-5464239b539b/model-set/545013cc-a1dc-4ee3-98bd-7a06688cf10

West Residence Hall

Philippe Bonneau

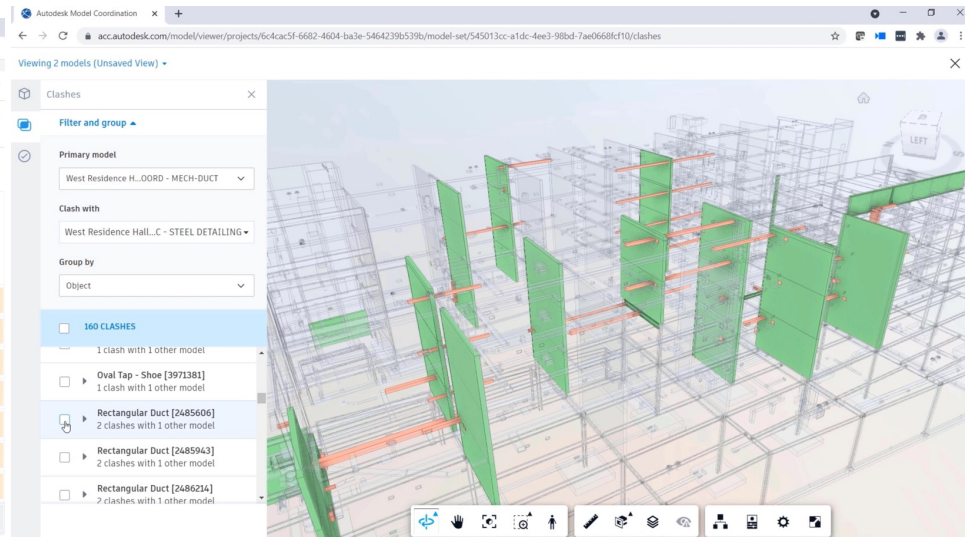
Active Assigned Closed

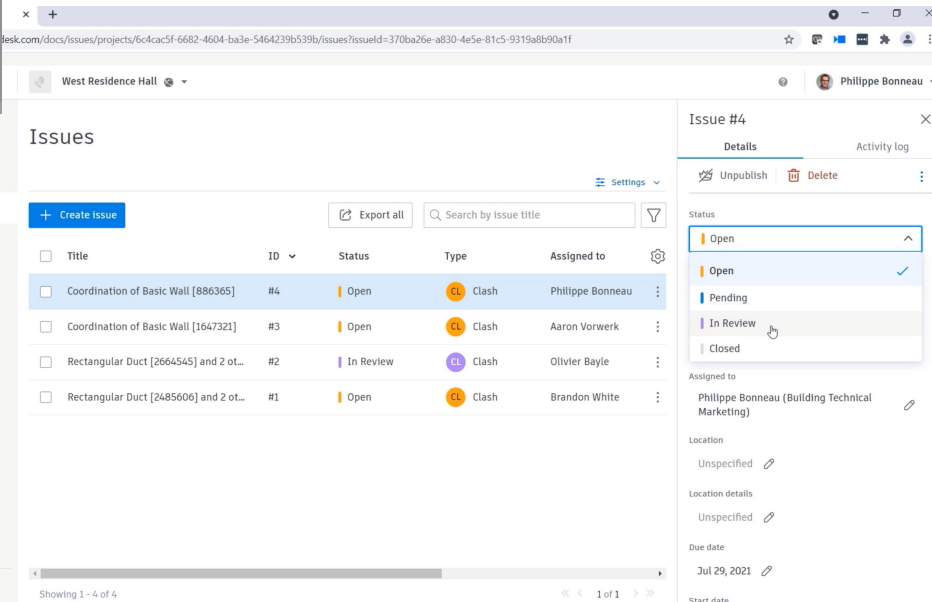
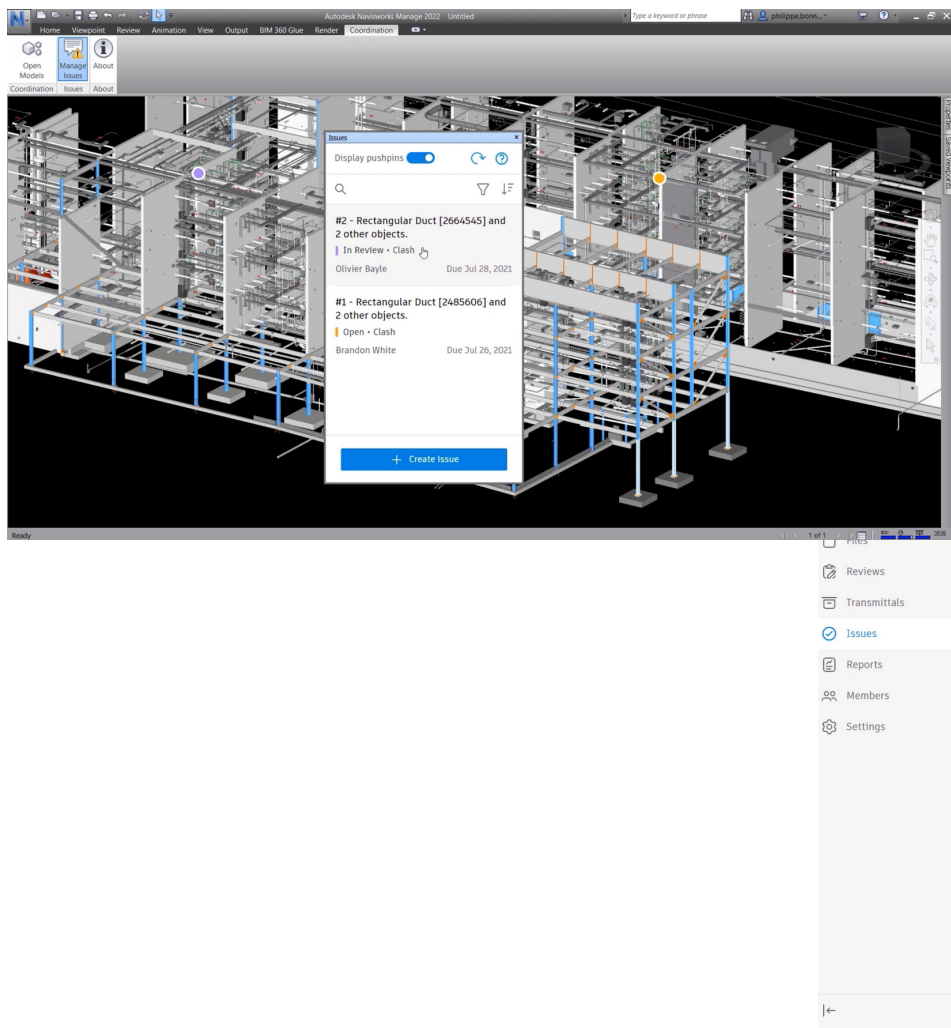
Search for models

Select a view

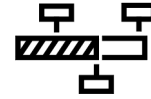
All 8 models

	West Res.-D - Clean	West Res.-COORDINATION	West Res.-ELECTRICAL	West Res.-FIRE-PRO	West Res.-MECH-DUCT	West Res.-MECH-PIPE	West Res.-PLUMBING	West Res.-DETAILING
West Residence Hall...rvrt - 3D - Clean	4764 clash groups							
West Residence H...H - COORDINATION	4664 clash groups							
West Residence Ha...OORD - ELECTRICAL	1687 clash groups							
West Residence H...COORD - FIRE-PRO	6715 clash groups							
West Residence H...OORD - MECH-DUCT	1380 clash groups							
West Residence Ha...COORD - MECH-PIPE	7186 clash groups							
West Residence H...COORD - PLUMBING	6867 clash groups							
West Residence Ha...STEEL DETAILING	635 clash groups							

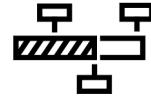




Subcontractors

[illegible]

Subcontractors



SEMESTRE I - AÑO 2022 (EVALUACION DE CONT...) ▾

Minimapa

Editar

EVALUACIÓN DE CONTRATISTAS

SEMANAS

febrero

marzo

abril

1

2

3

4

5

1

2

3

4

5

1

2

3

4

5

IES JD

s

CHADAS

Incidencia n.º 329

Detalles

Registro de actividad

Cancelar publicación

Supri

CONTRATISTA

INTERDOORS

PACC %

32

ASISTENCIA A LA REUNIÓN

SI

PROGRAMACIÓN

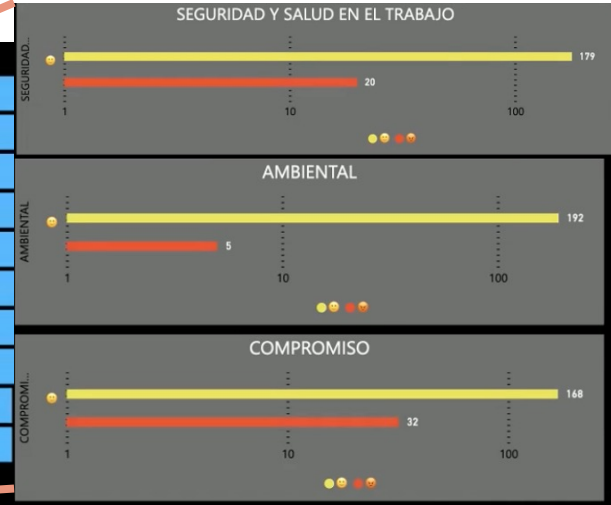
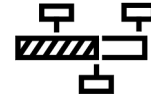
COMPROMISO

CALIDAD

ORDEN Y ASEO

SEGURIDAD Y SALUD EN EL TRABAJO

**MUROS Y
TECHOS**
INGENIEROS ARQUITECTOS





Time

Schedule

+ Add **⊖ Remove**

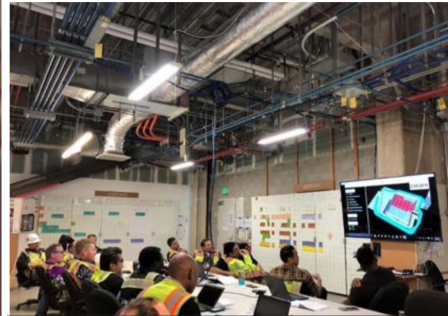
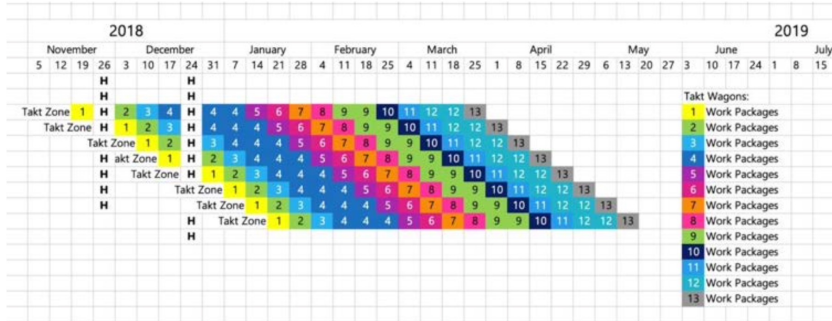
⋮	▼	Project Name
⋮	▼	Foundations
⋮		Excavate
⋮		Pour Concrete
⋮		Subtask
⋮	▼	Exterior
⋮		Framing
⋮		Sliding
⋮		Roofing
⋮	▼	Interior

+ Adicionar sublocalização **⊖ Remo**

Nome
▼ Project
▼ Torre A
Térreo
Pavimento 1
▼ Pavimento 2
▼ Apartamento 201
Sala
Cozinha
Apartamento 202
Torre B

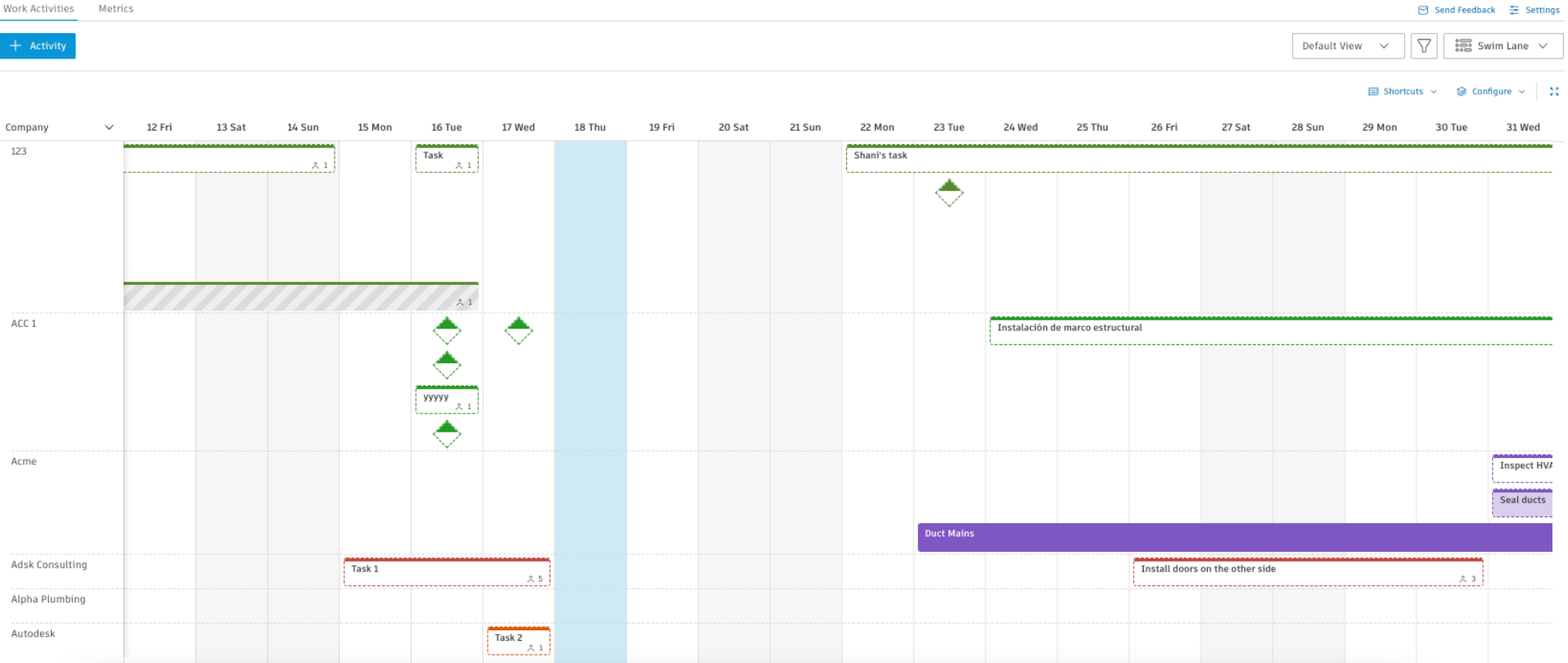


Big Room -



WorkPlan - OBS

BETA



WorkPlan - LBS

BETA

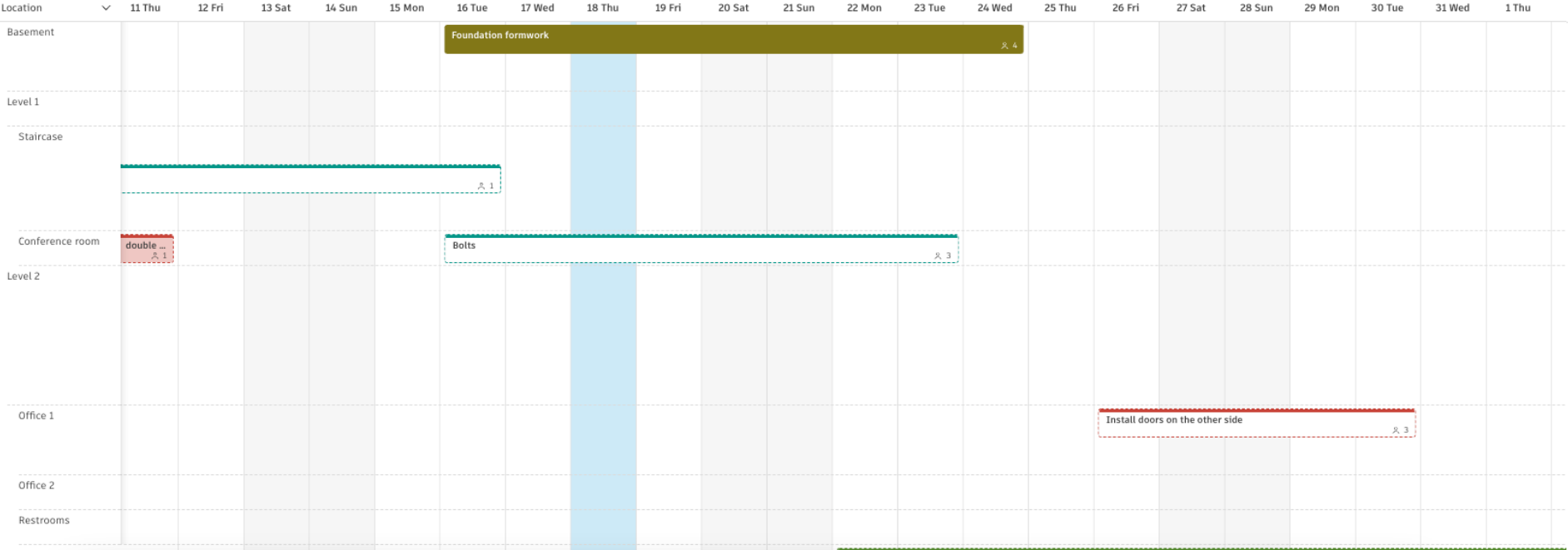
+ Activity

Default View

Swim Lane

Shortcuts

Configure



BETA

Metrics

 [Send Feedback](#) [Settings](#)

Default View

0000

Swim Lane ▾

Shortcuts ▾ Configure ▾ ⌵

[illegible]

WorkPlan - PPC

BETA

Work Activities

Metrics

[Send Feedback](#) [Settings](#)

Plan Percent Complete (PPC) Summary

 0
7-DAY ROLLING PPC

 0
LAST CALENDAR WEEK PPC

 27
PROJECT AVERAGE PPC


 70
TARGET PPC

Activity Summary

 16
7-DAY ACTIVITY COUNT

 16
LAST CALENDAR WEEK

 137
ALL ACTIVITIES

 9
ALL INCOMPLETE ACTIVITIES

Root Causes

● Under-estimated Effort ● Previous Handoff Incomplete ● Work Area Not Available ● Equipment Not Available ● Labor Not Available ● Materials Not Available ● Submittals Not Approved ● Safety Concern ● RFI Not Answered
● Change Order Pending / Not Issued ● Weather Conditions ● Work Not Authorized ● Other

9 Incomplete Activities

3

2

1

1

1

1

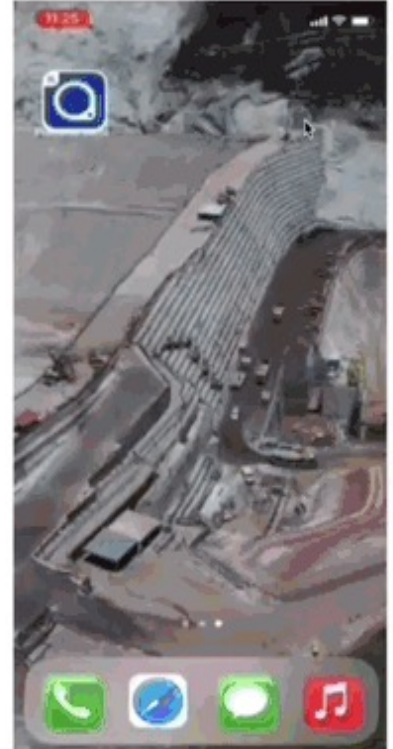
The CDE Single Source of Truth

Teams

35%

of time is wasted on non-optimal activities
(14+ hours/person/week)

Source: Construction Disconnected – FMI
Report





Cost

Budget

SAP Create Rush Order: Overview

Net value: 0,00 EUR

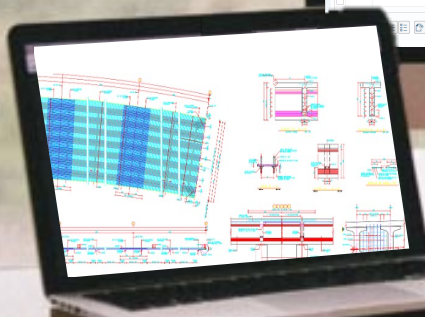
Sold-To Party: 1st
Ship-To Party: 1 1st
PO Number: PO date:

Sales Item overview Item detail Ordering party Procurement Shipping Reason for rejection

Req. deliv. date: 02.01.2019 Deliv. Plant:
☐ Complete del. Total Weight: 0,000
Delivery block: Volume: 0,000
Billing block: Pricing date: 02.01.2019
Payment card: Exp. date:
Card level Code:
Payment terms: Incoterms:
Order reason:

All items

Item	Material	Order Quantity	Un	Description	Customer Material	ItCa	DGP	HL	Item	C First date	Plst	Batch
										D 02.01.2019		
										D 02.01.2019		



B													
	Item	Material	Order Quantity	Un	Description	Customer Material	ItCa	DGP	HL	Item	C First date	Plst	Batch
1	120710	1	0,0000	1	120710	1	120710	1	120710	1	120710	1	120710
2	120710	1	0,0000	1	120710	1	120710	1	120710	1	120710	1	120710
3	120710	1	0,0000	1	120710	1	120710	1	120710	1	120710	1	120710
4	120710	1	0,0000	1	120710	1	120710	1	120710	1	120710	1	120710
5	120710	1	0,0000	1	120710	1	120710	1	120710	1	120710	1	120710
6	120710	1	0,0000	1	120710	1	120710	1	120710	1	120710	1	120710
7	120710	1	0,0000	1	120710	1	120710	1	120710	1	120710	1	120710
8	120710	1	0,0000	1	120710	1	120710	1	120710	1	120710	1	120710
9	120710	1	0,0000	1	120710	1	120710	1	120710	1	120710	1	120710
10	120710	1	0,0000	1	120710	1	120710	1	120710	1	120710	1	120710
11	120710	1	0,0000	1	120710	1	120710	1	120710	1	120710	1	120710
12	120710	1	0,0000	1	120710	1	120710	1	120710	1	120710	1	120710
13	120710	1	0,0000	1	120710	1	120710	1	120710	1	120710	1	120710
14	120710	1	0,0000	1	120710	1	120710	1	120710	1	120710	1	120710
15	120710	1	0,0000	1	120710	1	120710	1	120710	1	120710	1	120710
16	120710	1	0,0000	1	120710	1	120710	1	120710	1	120710	1	120710
17	120710	1	0,0000	1	120710	1	120710	1	120710	1	120710	1	120710
18	120710	1	0,0000	1	120710	1	120710	1	120710	1	120710	1	120710
19	120710	1	0,0000	1	120710	1	120710	1	120710	1	120710	1	120710
20	120710	1	0,0000	1	120710	1	120710	1	120710	1	120710	1	120710
21	120710	1	0,0000	1	120710	1	120710	1	120710	1	120710	1	120710
22	120710	1	0,0000	1	120710	1	120710	1	120710	1	120710	1	120710
23	120710	1	0,0000	1	120710	1	120710	1	120710	1	120710	1	120710
24	120710	1	0,0000	1	120710	1	120710	1	120710	1	120710	1	120710
25	120710	1	0,0000	1	120710	1	120710	1	120710	1	120710	1	120710
26	120710	1	0,0000	1	120710	1	120710	1	120710	1	120710	1	120710
27	120710	1	0,0000	1	120710	1	120710	1	120710	1	120710	1	120710
28	120710	1	0,0000	1	120710	1	120710	1	120710	1	120710	1	120710
29	120710	1	0,0000	1	120710	1	120710	1	120710	1	120710	1	120710
30	120710	1	0,0000	1	120710	1	120710	1	120710	1	120710	1	120710
31	120710	1	0,0000	1	120710	1	120710	1	120710	1	120710	1	120710
32	120710	1	0,0000	1	120710	1	120710	1	120710	1	120710	1	120710
33	120710	1	0,0000	1	120710	1	120710	1	120710	1	120710	1	120710
34	120710	1	0,0000	1	120710	1	120710	1	120710	1	120710	1	120710
35	120710	1	0,0000	1	120710	1	120710	1	120710	1	120710	1	120710
36	120710	1	0,0000	1	120710	1	120710	1	120710	1	120710	1	120710
37	120710	1	0,0000	1	120710	1	120710	1	120710	1	120710	1	120710
38	120710	1	0,0000	1	120710	1	120710	1	120710	1	120710	1	120710
39	120710	1	0,0000	1	120710	1	120710	1	120710	1	120710	1	120710
40	120710	1	0,0000	1	120710	1	120710	1	120710	1	120710	1	120710
41	120710	1	0,0000	1	120710	1	120710	1	120710	1	120710	1	120710
42	120710	1	0,0000	1	120710	1	120710	1	120710	1	120710	1	120710
43	120710	1	0,0000	1	120710	1	120710	1	120710	1	120710	1	120710
44	120710	1	0,0000	1	120710	1	120710	1	120710	1	120710	1	120710
45	120710	1	0,0000	1	120710	1	120710	1	120710	1	120710	1	120710
46	120710	1	0,0000	1	120710	1	120710	1	120710	1	120710	1	120710
47	120710	1	0,0000	1	120710	1	120710	1	120710	1	120710	1	120710
48	120710	1	0,0000	1	120710	1	120710	1	120710	1	120710	1	120710
49	120710	1	0,0000	1	120710	1	120710	1	120710	1	120710	1	120710
50	120710	1	0,0000	1	120710	1	120710	1	120710	1	120710	1	120710
51	120710	1	0,0000	1	120710	1	120710	1	120710	1	120710	1	120710
52	120710	1	0,0000	1	120710	1	120710	1	120710	1	120710	1	120710
53	120710	1	0,0000	1	120710	1	120710	1	120710	1	120710	1	120710
54	120710	1	0,0000	1	120710	1	120710	1	120710	1	120710	1	120710
55	120710	1	0,0000	1	120710	1	120710	1	120710	1	120710	1	120710
56	120710	1	0,0000	1	120710	1	120710	1	120710	1	120710	1	120710
57	120710	1	0,0000	1	120710	1	120710	1	120710	1	120710	1	120710
58	120710	1	0,0000	1	120710	1	120710	1	120710	1	120710	1	120710
59	120710	1	0,0000	1	120710	1	120710	1	120710	1	120710	1	120710
60	120710	1	0,0000	1	120710	1	120710	1	120710	1	120710	1	120710
61	120710	1	0,0000	1	120710	1	120710	1	120710	1	120710	1	120710
62	120710	1	0,0000	1	120710	1	120710	1	120710	1	120710	1	120710
63	120710	1	0,0000	1	120710	1	120710	1	120710	1	120710	1	120710
64	120710	1	0,0000	1	120710	1	120710	1	120710	1	120710	1	120710
65	120710	1	0,0000	1	120710	1	120710	1	120710	1	120710	1	120710
66	120710	1	0,0000	1	120710	1	120710	1	120710	1	120710	1	120710
67	120710	1	0,0000	1	120710	1	120710	1	120710	1	120710	1	120710
68	120710	1	0,0000	1	120710	1	120710	1	120710	1	120710	1	120710
69	120710	1	0,0000	1	120710	1	120710	1	120710	1	120710	1	120710
70	120710	1	0,0000	1	120710	1	120710	1	120710	1	120710	1	120710
71	120710	1	0,0000	1	120710	1	120710	1	120710	1	120710	1	120710
72	120710	1	0,0000	1	120710	1	120710	1	120710	1	120710	1	120710
73	120710	1	0,0000	1	120710	1	120710	1	120710	1	120710	1	120710
74	120710	1	0,0000	1	120710	1	120710	1	120710	1	120710	1	120710
75	120710	1	0,0000	1	120710	1	120710	1	120710	1	120710	1	120710
76	120710	1	0,0000	1	120710	1	120710	1	120710	1	120710	1	120710
77	120710	1	0,0000	1	120710	1	120710	1	120710	1	120710	1	120710
78	120710	1	0,0000	1	120710	1	120710	1	120710	1	120710	1	120710
79	120710	1	0,0000	1	120710	1	120710	1	120710	1	120710	1	120710
80	120710	1	0,0000	1	120710	1	120710	1	120710	1	120710	1	120710
81	120710	1	0,0000	1	120710	1	120710	1	120710	1	120710	1	120710
82	120710	1	0,0000	1	120710	1	120710	1	120710	1	120710	1	120710
83	120710	1	0,0000	1	120710	1	120710	1	120710	1	120710	1	120710
84	120710	1	0,0000	1	120710	1	120710	1	120710	1	120710	1	120710
85	120710	1	0,0000	1	120710	1	120710	1	120710	1	120710	1	120710
86	120710	1	0,0000	1	120710	1	120710	1	120710	1	120710	1	120710
87	120710	1	0,0000	1	120710	1	120710	1	120710	1	120710	1	120710
88	120710	1	0,0000	1	120710	1	120710	1	120710	1	120710	1	120710
89	120710	1	0,0000	1	120710	1	120710	1	120710	1	120710	1	120710
90	120710	1	0,0000	1	120710	1	120710	1	120710	1	120710	1	120710
91	120710	1	0,0000	1	120710	1	120710	1	120710	1	120710	1	120710
92	120710	1	0,0000	1	120710	1	120710	1	120710	1	120710	1	120710
93	120710	1	0,0000	1	120710	1	120710	1	120710	1	120710	1	12

Forecast

Cost & Time

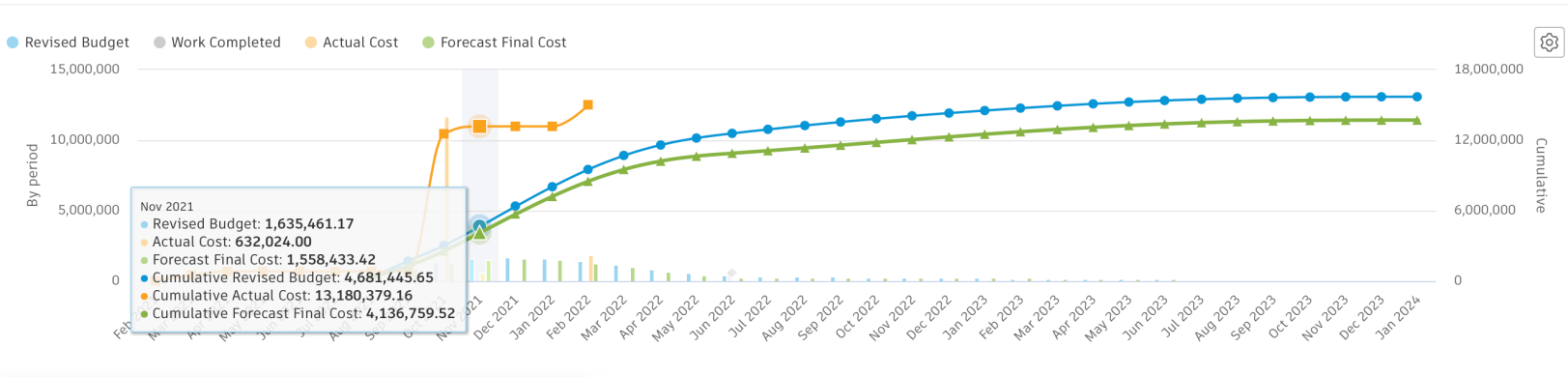
Cash Flow

Project summary

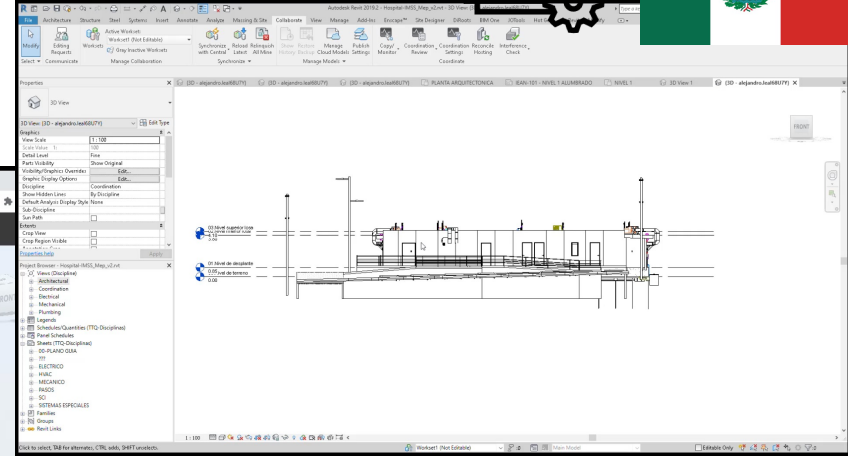
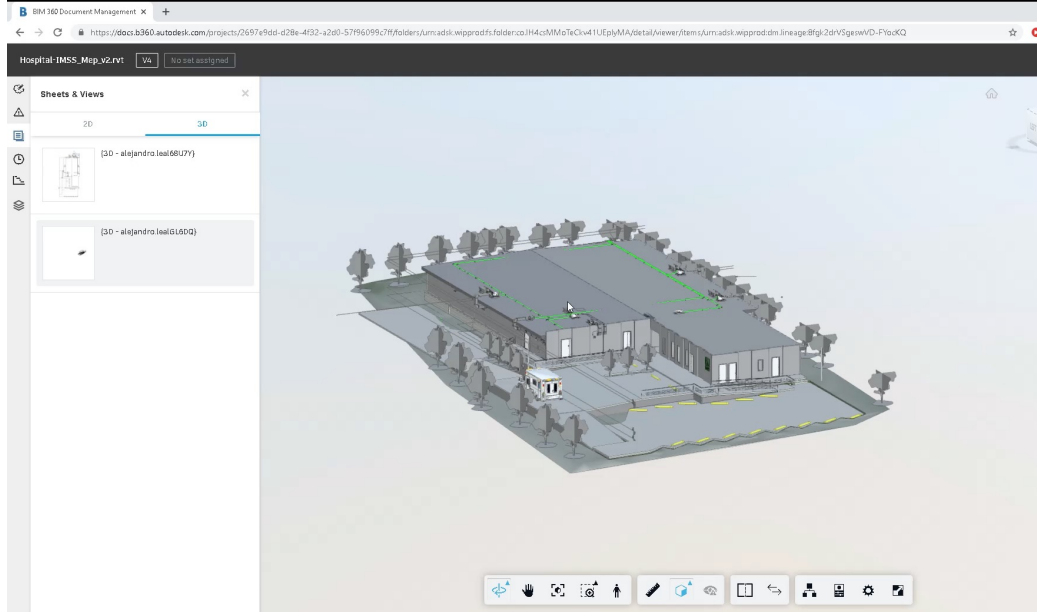
Export

Amount %

By period



Name	Actual Total	Distribution Total	Jul	Aug	Sep	Oct	Nov	Dec	Jan	Feb	
Revised Budget	75,297,215.85	15,705,308.95		333,019.45	1,376,678.60	1,336,286.50	1,635,461.20	1,711,108.85	1,646,999.50	1,469,890.10	1,198,96
Work Completed	722,015.95	722,015.95									
Actual Cost	15,021,162.25	15,021,162.25		10,000.00		11,714,821.00	632,024.00			1,840,783.10	
Forecast Final Cost	79,006,795.95	13,717,857.10		329,969.95	957,212.80	1,291,143.45	1,558,433.45	1,589,096.75	1,489,531.05	1,291,326.70	1,011,71










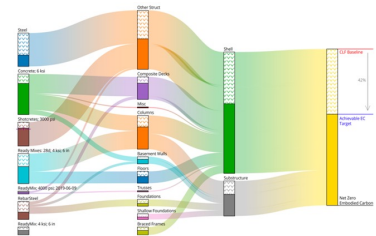
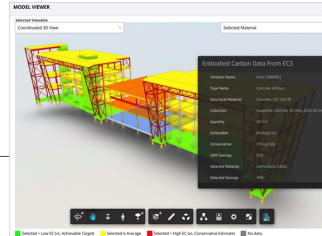
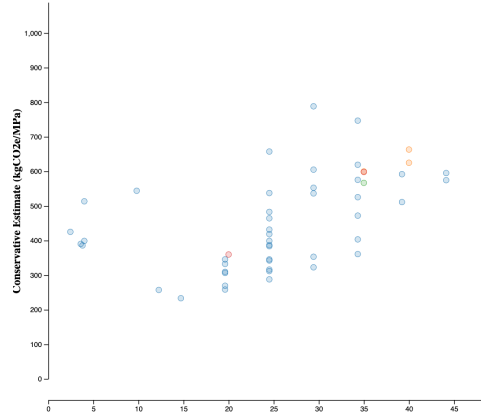
NRMA Certified Environmental Product Declaration

This environmental product declaration was conducted in accordance with ISO 14025:2006

☐ Internal Verification

☒ External Verification

Declared Product:	This Environmental Product Declaration (EPD) covers thirty (30) concrete mixes produced by CEMEX at the Armas Plant in Mexico City.		
Declared Owner:	CEMEX México/CEMEX SAB 52(55)5626-8374 www.cemexmexico.com		
Program Operator:	National Ready Mixed Concrete Association 900 Spring St., Silver Spring, MD 20910 www.nrma.org/sustainability		
	Lionel Lemay		
LCA and EPD Developer:	CEMEX through WBCSD CSI-PCA tool of concrete and cement https://concrete-epd-tool.org Alexander Martin Roeder, Sustainable Affair Manager alexander.roeder@cemex.com Arturo Gaytan Covarrubias, Sustainability Manager arturo.gaytan@cemex.com Sharon Angelica Vallejo Reyes, Sustainability Coordinator sharonangelica.vallejo@cemex.com Enrique De Hoyos Guajardo, Sustainability and Environmental Advisor enrique.dehoyosg@cemex.com	 World Business Council for Sustainable Development Cement Sustainability Initiative 	
Independent Verifiers:	Jamie Meil, Research Principal Athena Sustainable Materials Institute 119 Ross Avenue, Suite 100 Ottawa, Ontario, Canada info@athenasmi.org	 Athena Sustainable Materials Institute	
Product Category Rule:	North American Product Category Rules (PCR) for ISO 14025 Type III Environmental Product Declarations (EPDs) for Concrete, Version 1.1, dated 12/4/2013 (including clarifications #1, #2, and #3) The Carbon Leadership Forum www.carbonleadershipforum.org		
Date of Issue:	September 1, 2017		
Period of Validity:	September 2017 – September 2022		
EPD Number:	NRMCAEPD:10012		



Prefab – Asset Management



Componentes

Configuración

Todas las categorías

► Elemento Estructural

► Losa

▼ Muros

M-1

M-3

M-5

M-6

M-7

M-8

M-9

M-10

M-11

M-12

M-13

M-14

M-15

Mostrando 24 componentes

+ Crear componente

Exportar (24)

Buscar...

Filtros (1)

<input type="checkbox"/>	Nombre	Categoría	Estado ↑	Referencias vi...	Descripción
<input type="checkbox"/>	TOD_MUR_P3_230	Muros > M-7	Entregado e...	-	Soluciones Mo...
<input type="checkbox"/>	TOD_MUR_P3_231	Muros > M-7	Entregado e...	-	Soluciones Mo...
<input type="checkbox"/>	TOD_MUR_P3_232	Muros > M-7	Entregado e...	-	Soluciones Mo...
<input type="checkbox"/>	TOD_MUR_P3_233	Muros > M-7	Entregado e...	-	Soluciones Mo...
<input type="checkbox"/>	TOD_MUR_P3_242	Muros > M-9	Entregado e...	-	Soluciones Mo...
<input type="checkbox"/>	TOD_MUR_P3_243	Muros > M-9	Entregado e...	-	Soluciones Mo...
<input type="checkbox"/>	TOD_MUR_P3_247	Muros > M-9	Entregado e...	-	Soluciones Mo...
<input type="checkbox"/>	TOD_MUR_P3_248	Muros > M-9	Entregado e...	-	Soluciones Mo...
<input type="checkbox"/>	TOD_MUR_P3_212	Muros > M-3	Fabricación	-	Soluciones Mo...
<input type="checkbox"/>	TOD_MUR_P3_213	Muros > M-3	Fabricación	-	Soluciones Mo...
<input type="checkbox"/>	TOD_MUR_P3_222	Muros > M-6	Almacen	-	Soluciones Mo...
<input type="checkbox"/>	TOD_MUR_P3_223	Muros > M-6	Almacen	-	Soluciones Mo...

Filtrar componentes

Estado

Fabricación x Almacen x
Entregado en obra x

- ☒ Fabricación Soluciones Modulares
- ☒ Almacen Soluciones Modulares
- ☐ Transporte a Sitio Soluciones Modulares
- ☒ Entregado en obra Soluciones Modulares
- ☐ Ensamblaje Soluciones Modulares
- ☐ Instalación Aprobada

Borrar

10:44

Projects MCad_Medellin(SandBox)

Here's what's happening on your project today.

Take a photo

Recently viewed sheets

See all



Recently viewed files

- PDF-MZ8-EST-TORRE_D_DOBLE.rvt
- LinkACC_Assets(Argos).xls
- EST-PROYECTO B-R21.rvt

Home

Sheets

Files

Forms

More

Prefab - Dashboards



ACC Assets Dashboard (Project)

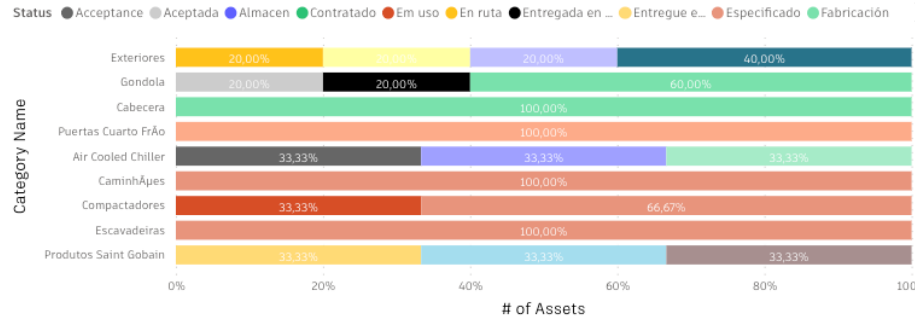
AUTODESK Construction Cloud

Top Asset updaters

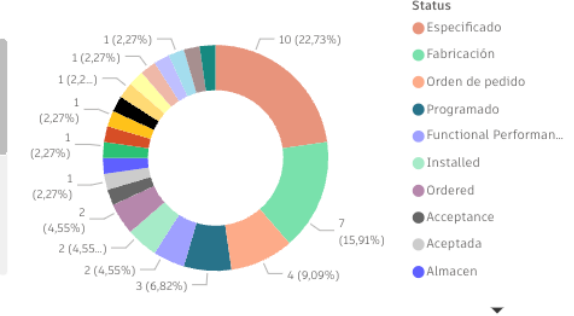
Mauricio Irastorza Campos	Marcos Harano	Renan José da Silva
22	16	6

ID	Category Name	Status	Last Updated By	# Closed Issues	# Open Issues	# Draft Issues	# Clicks
Gondola [239779]	Gondola	Fabricación	Mauricio Irastorza Campos				
Gondola [240122]	Gondola	Fabricación	Mauricio Irastorza Campos				
Gondola [240620]	Gondola	Entregada en sitio	Mauricio Irastorza Campos				
Gondola [492627]	Gondola	Fabricación	Mauricio Irastorza Campos				
Gondola [492716]	Gondola	Aceptada	Mauricio Irastorza Campos				
Gondola 1	GA³ndola	Ordered	Mauricio Irastorza Campos				
Gondola 2	GA³ndola	Ordered	Mauricio Irastorza Campos				
Linha Uni - Gerador Morro Grande	Geradores	Instalado/Executado	Marcos Harano				
Medidor 1	Medidor de Vazão	Specified	Renan José da Silva				

of Assets por Category Name y Status



of Assets por Status



Project Name
Todas

Category Name
Todas

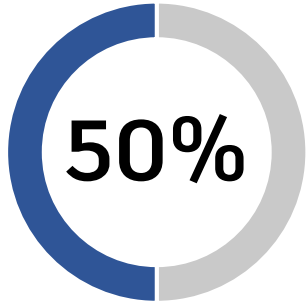
Last Updated in
Último 365 Días

24/08/2021 - 23/08/2022

% Acceptance

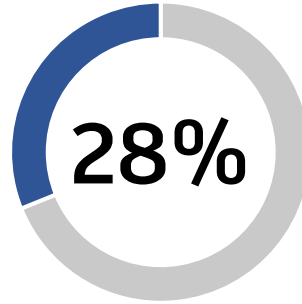


Key Benefits



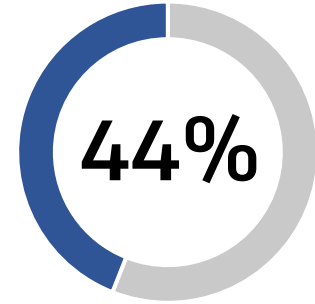
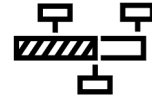
TIME SAVED

On monitoring and reporting field activities and quality inspections



WASTE REDUCTION

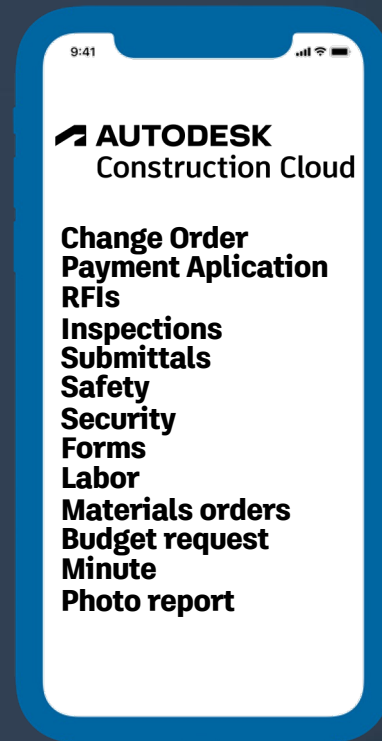
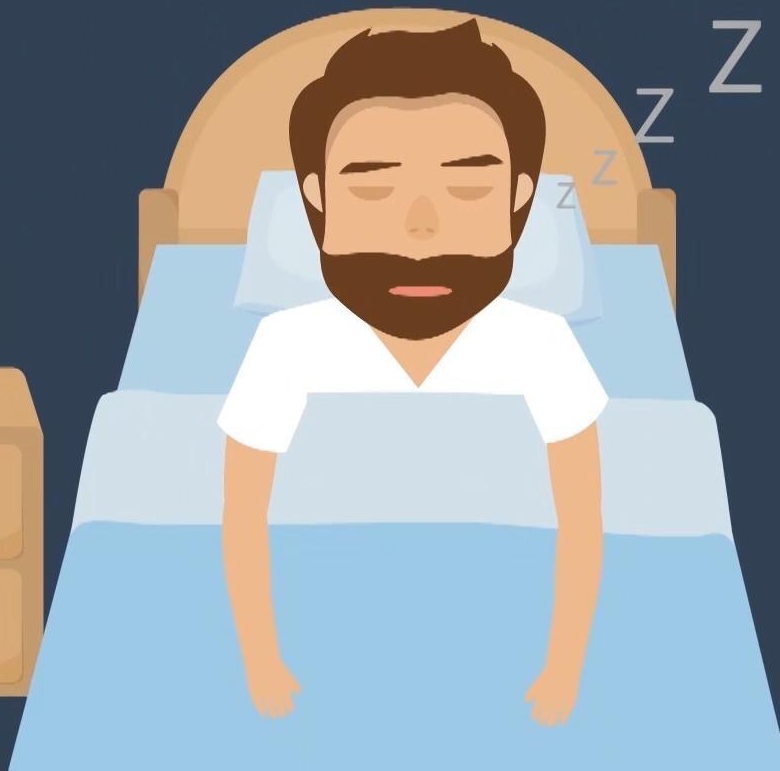
By agile change management and asset tracking



AHEAD OF SCHEDULE

25 months of construction vs 36 months planned







Autodesk and the Autodesk logo are registered trademarks or trademarks of Autodesk, Inc., and/or its subsidiaries and/or affiliates in the USA and/or other countries. All other brand names, product names, or trademarks belong to their respective holders. Autodesk reserves the right to alter product and services offerings, and specifications and pricing at any time without notice, and is not responsible for typographical or graphical errors that may appear in this document.

© 2022 Autodesk. All rights reserved.