

Build a Digital Value Chain with Revit+BiM360+SpacelQ+Forge & its results

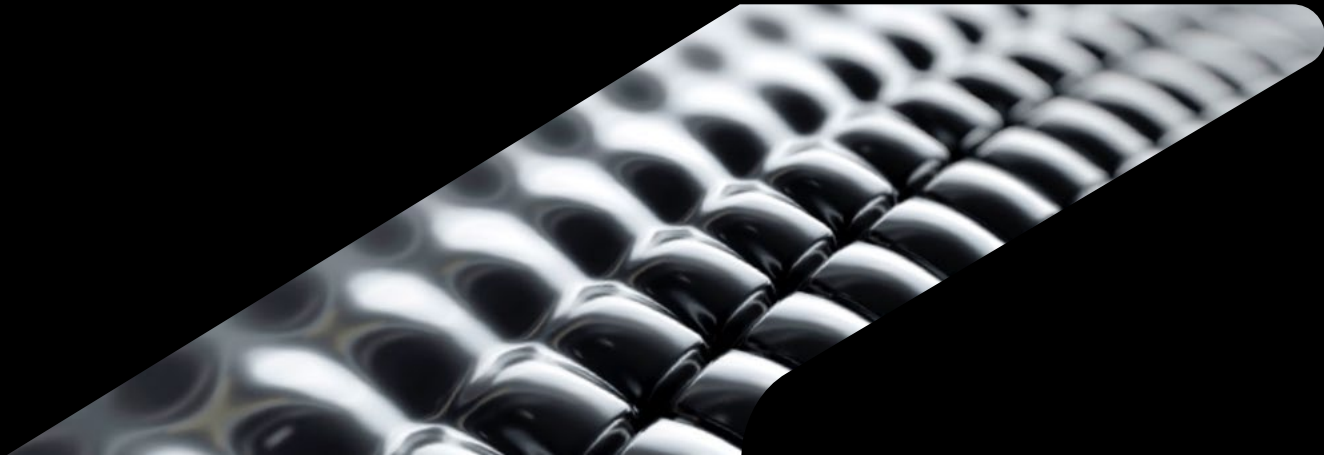
CS502392

Takuma Ogawa

Construction DX Dept.
Daiwa House Industry Co.,Ltd.

Tomohiro Mikami

Construction DX Dept.
Daiwa House Industry Co.,Ltd.



Safe Harbor Statement

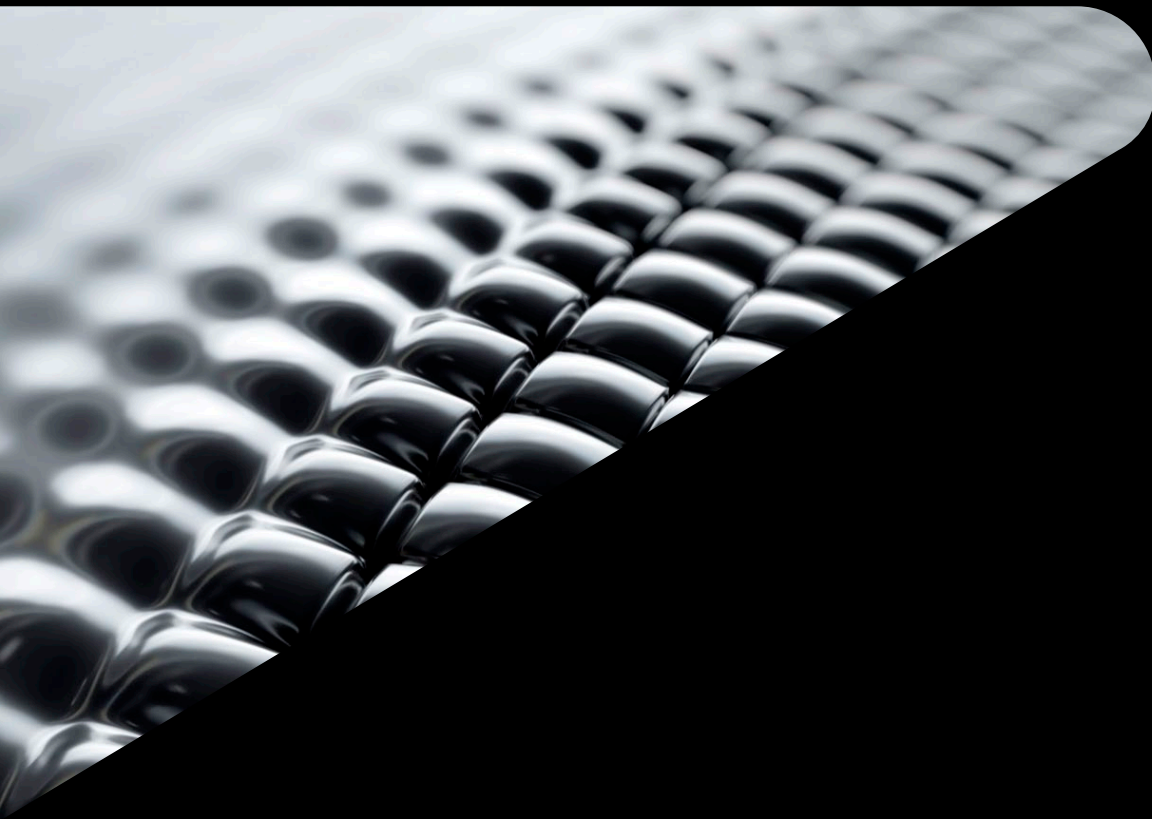
We may make forward-looking statements regarding planned or future development efforts for our existing or new products and services and statements regarding our strategic priorities. These statements are not intended to be a promise or guarantee of business results, future availability of products, services or features but merely reflect our current plans and are based on factors currently known to us. These planned and future development efforts may change without notice. Purchasing and investment decisions should not be made based upon reliance on these statements.

A discussion of factors that may affect future results is contained in our most recent Form 10-K and Form 10-Q filings available at www.sec.gov, including descriptions of the risk factors that may impact us and the forward-looking statements made in these presentations. Autodesk assumes no obligation to update these forward-looking statements to reflect events that occur or circumstances that exist or change after the date on which they were made. If this presentation is reviewed after the date the statements are made, these statements may no longer contain current or accurate information.

This presentation also contains information, opinions and data supplied by third parties and Autodesk assumes no responsibility for the accuracy or completeness of such information, opinions or data, and shall not be liable for any decisions made based upon reliance on any such information, opinions or data.

Autodesk's partners frequently compete against each other in the marketplace, and it is critically important that all participants in this meeting observe all requirements of antitrust laws and other laws regarding unfair competition. Autodesk's long insistence upon full compliance with all legal requirements in the antitrust field has not been based solely on the desire to stay within the bounds of the law, but also on the conviction that the preservation of a free and vigorous competitive economy is essential to the welfare of our business and that of our partners, the markets they serve, and the countries in which they operate. It is against the policy of Autodesk to sponsor, encourage or tolerate any discussion or communication among any of its partners concerning past, present or future prices, pricing policies, bids, discounts, promotions, terms or conditions of sale, choice of customers, territorial markets, quotas, inventory, allocation of markets, products or services, boycotts and refusals to deal, or any proprietary or confidential information. Communication of this type should not occur, whether written, oral, formal, informal, or "off the record." All discussion at this meeting should be strictly limited to presentation topics.

PLEASE NOTE: OTC content is proprietary. Do Not Copy, Post or Distribute without expressed permission.



Introduction

About Speakers

- Takuma Ogawa

- Joined Daiwa House in 2019
- Specialized in BIM, establishing CDE
- Hobby: Cooking



- Tomohiro Mikami

- Joined Daiwa House in 2019
- Specialized in classification, Information system
- Hobby: Driving, Traveling



About Daiwa House

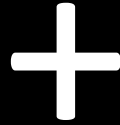
Origin; Prefabrication







Products

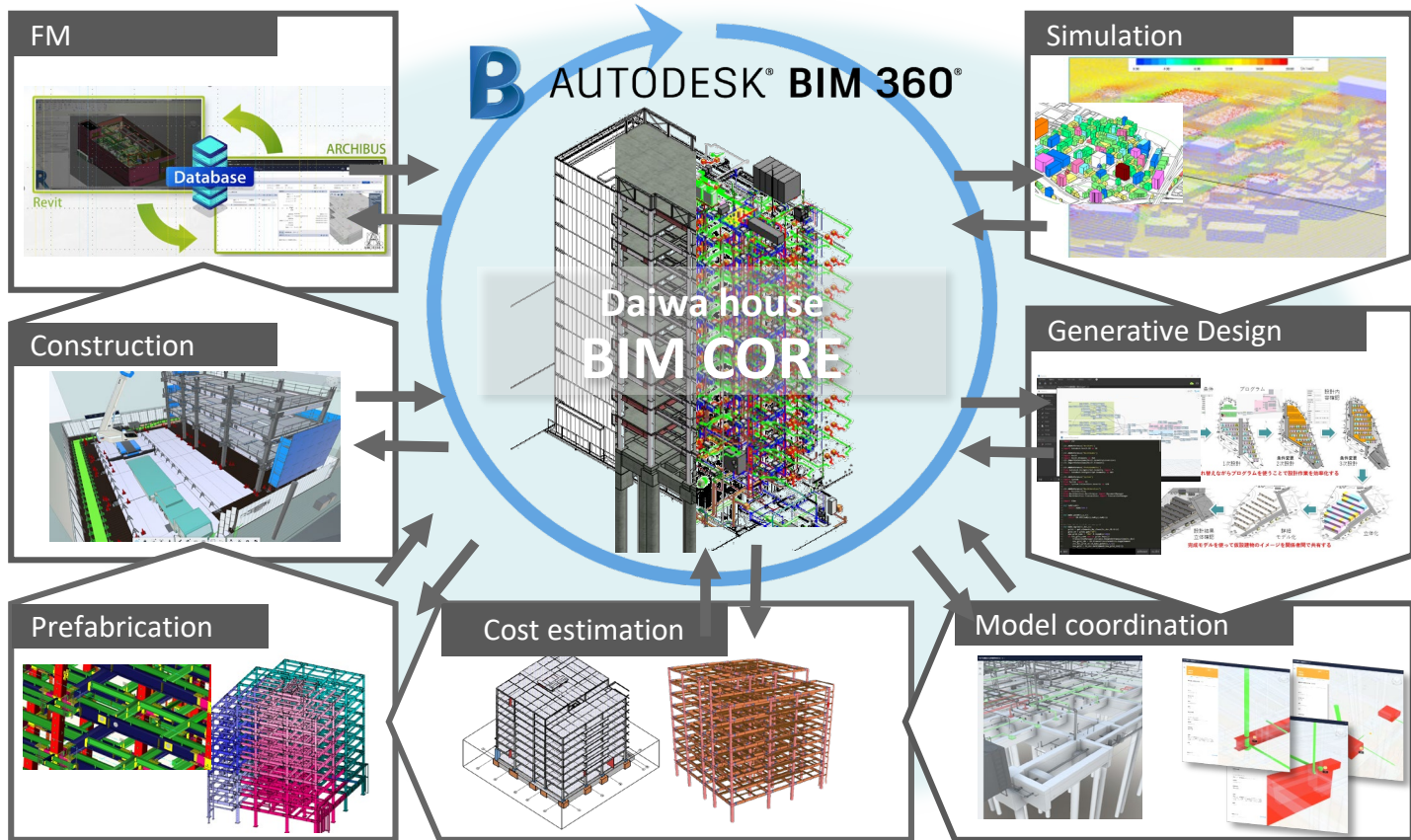


Information

A close-up photograph of a black, glossy, woven mesh texture, possibly a cable or a flexible screen, with a diagonal line separating it from the black background on the right.

What is Digital Value chain for Construction

Concept of Digital Value chain for Construction



Digital Platform



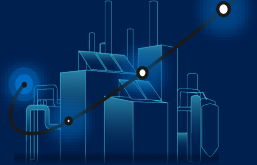
Concept of Digital Value chain for Construction



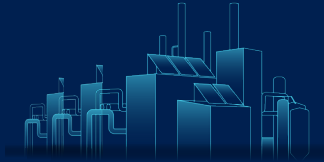
Physical Environment



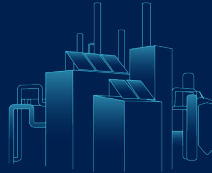
Autonomous
control by AI



Predicting &
preventing
disasters



Preserve/track
back history



Synchronize real &
virtual, grasp situation
by data



Bidirectional
interactions between
real and virtual



Simulate in Virtual
space



Analyze



Monitor events

Digital Environment



*i*ffice® + SpacelQ®



**Our attempt
FM-BIM**

Evaluate Digital-Twin by Owners viewpoint



Koto-kurie

About ARCHIBUS



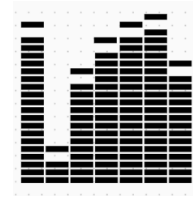
Utilize BIM in O/M phase

Case-1



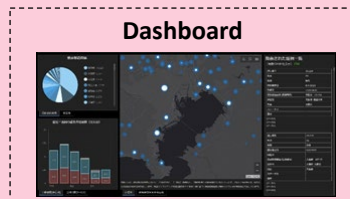
Collaborate with
Central Supervisory
Control System

Case-2

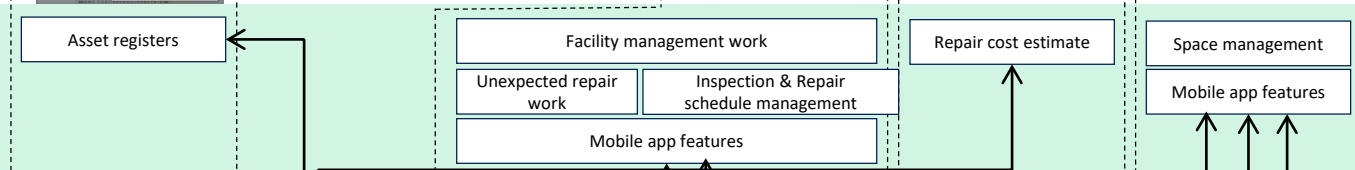
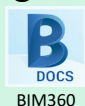


Visualize
Space usage

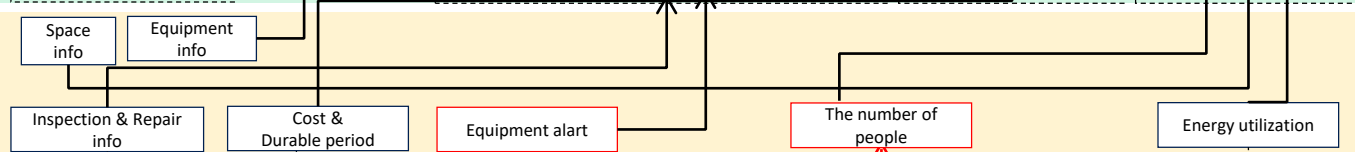
① Archibus Display Layer



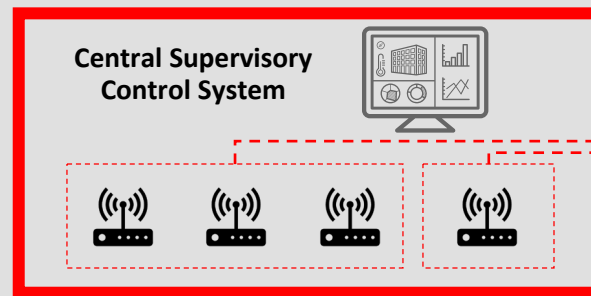
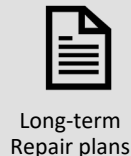
② Data Storage Layer



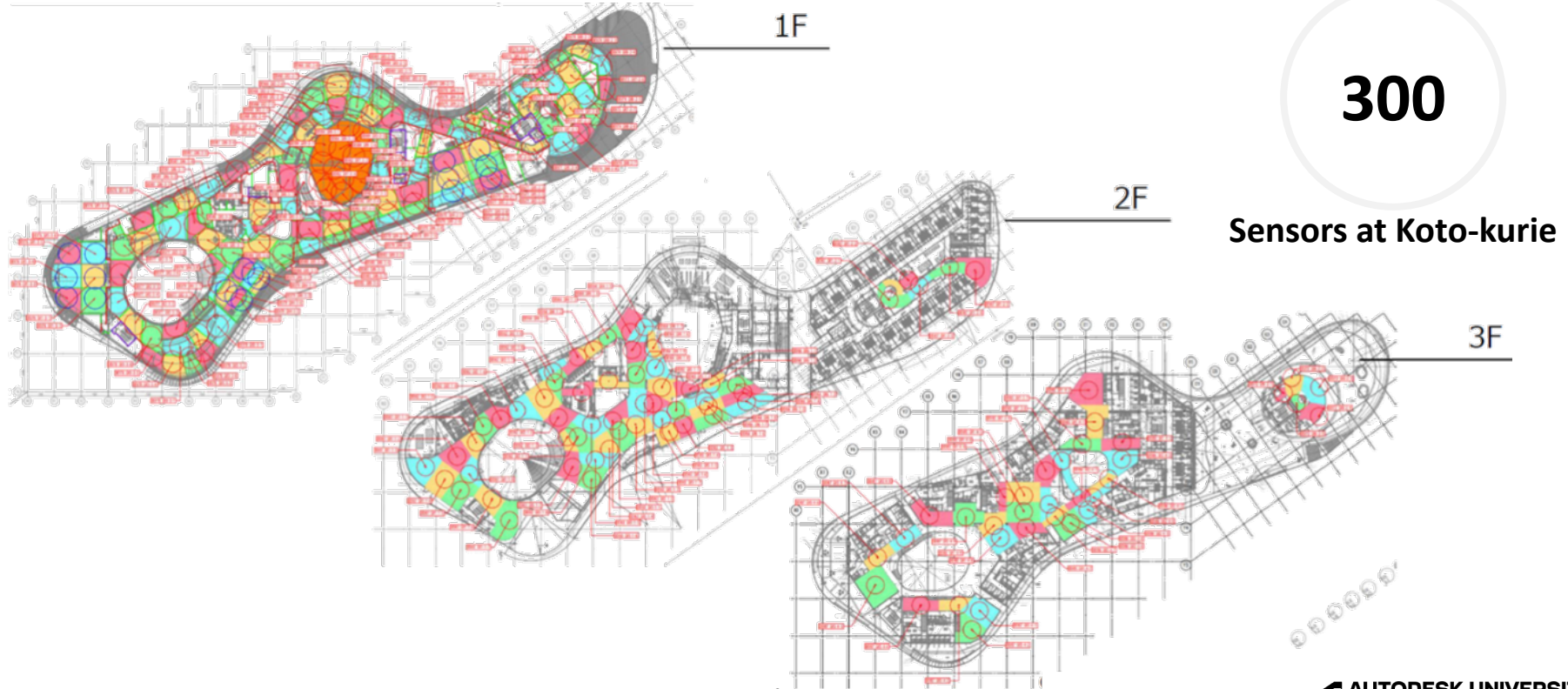
③ Data Acquisition Layer



④ Actual Building Layer



Collaborate with Central Supervisory Control System

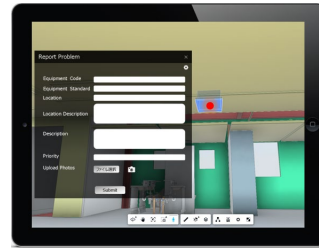


Collaborate with Central Supervisory Control System

Defect & Inform



Take actions



Confidential

Record to DB



Collaborate with Central Supervisory Control System

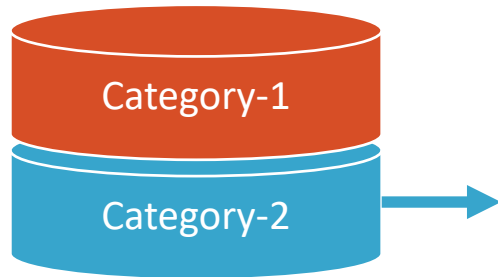


Category-1

Problem in individual piece

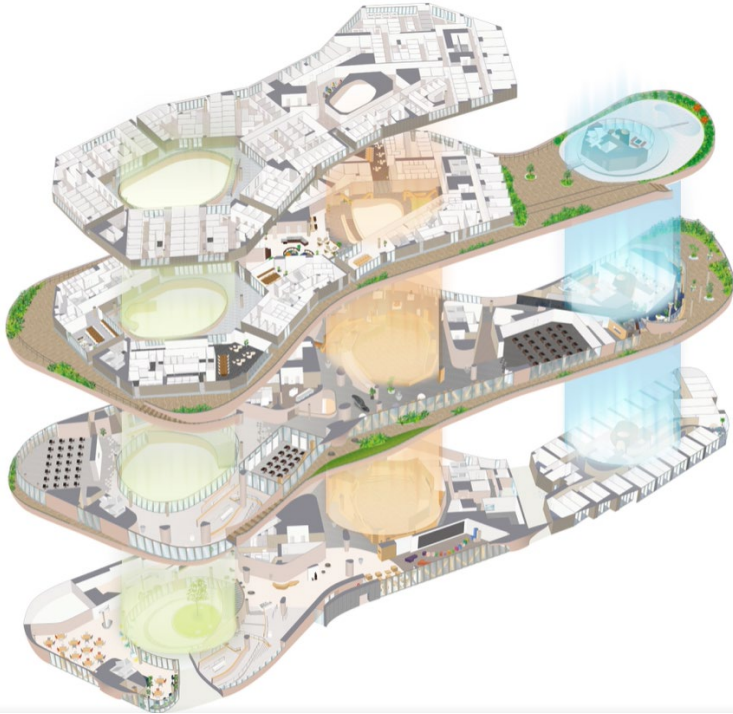
Category-2

Potential problem in design/install

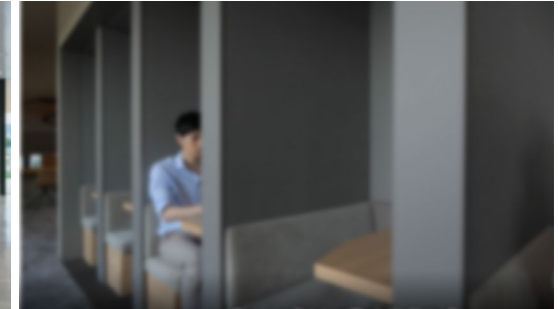


Check & Take actions!

Visualization of Space usage

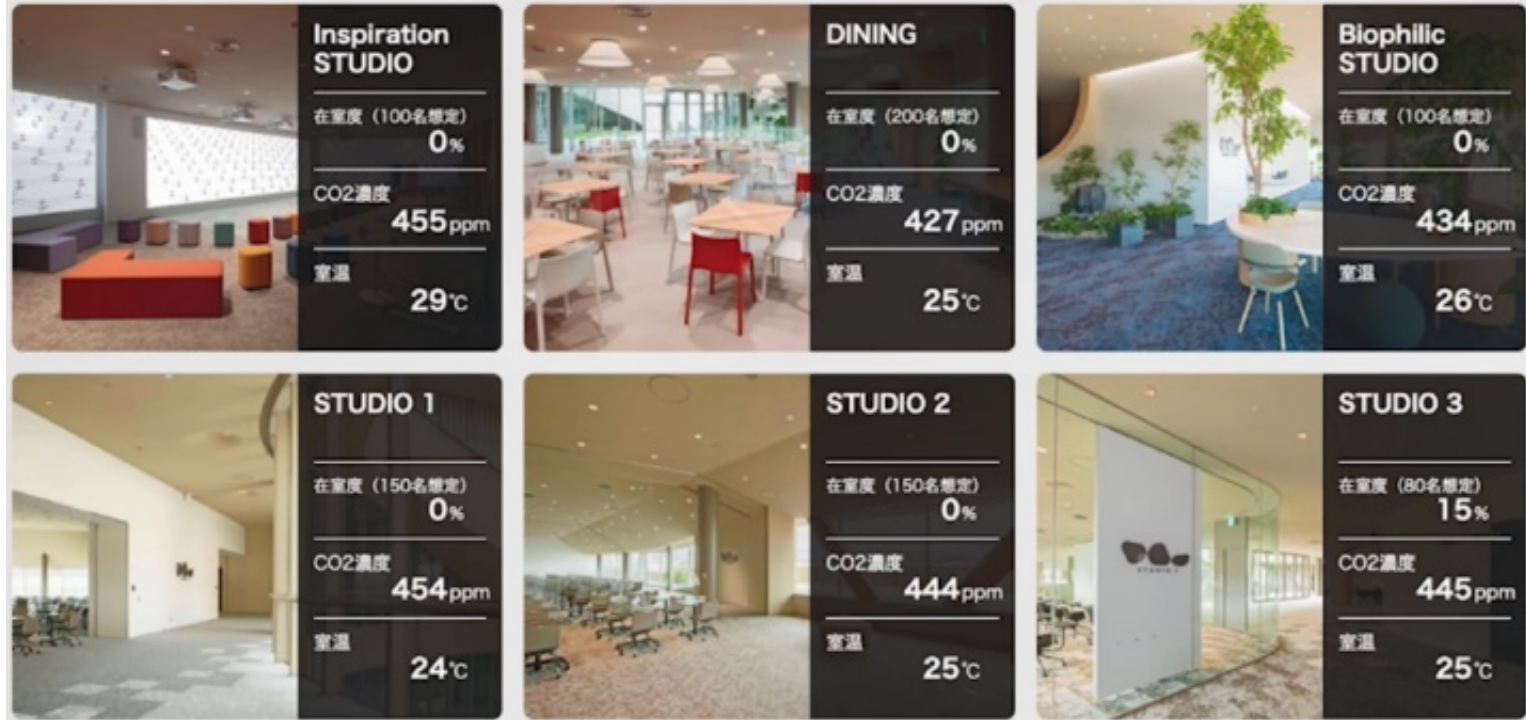


Highly utilized



Not much utilized...

Visualization of Space usage



Summary of Koto-kurie project

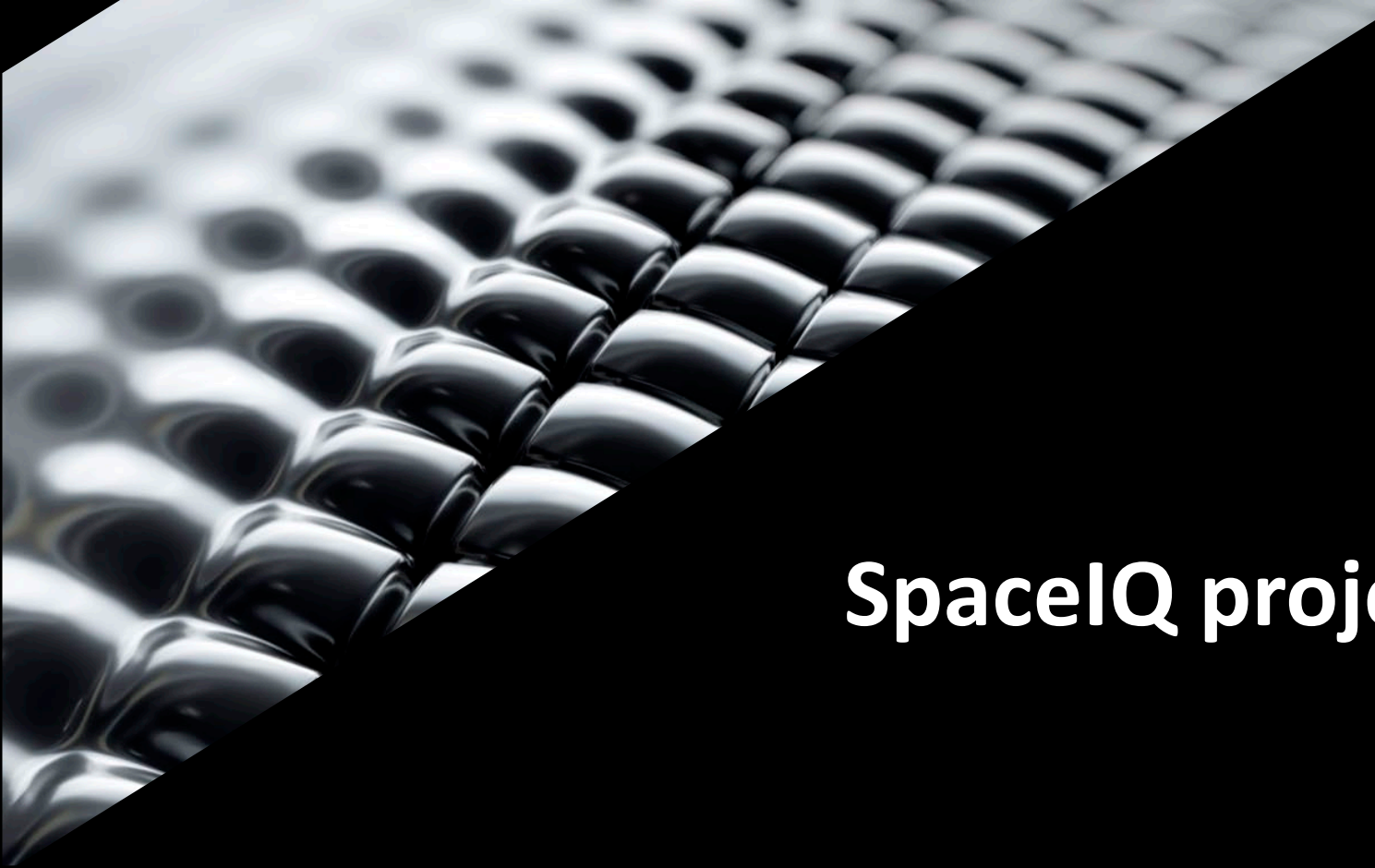
□ Achievements

- Tangible outcome from Digital Twin
 - Visualize facility operation data
- Effective for multiple building management
 - Improve traceability of facilities

□ Challenges

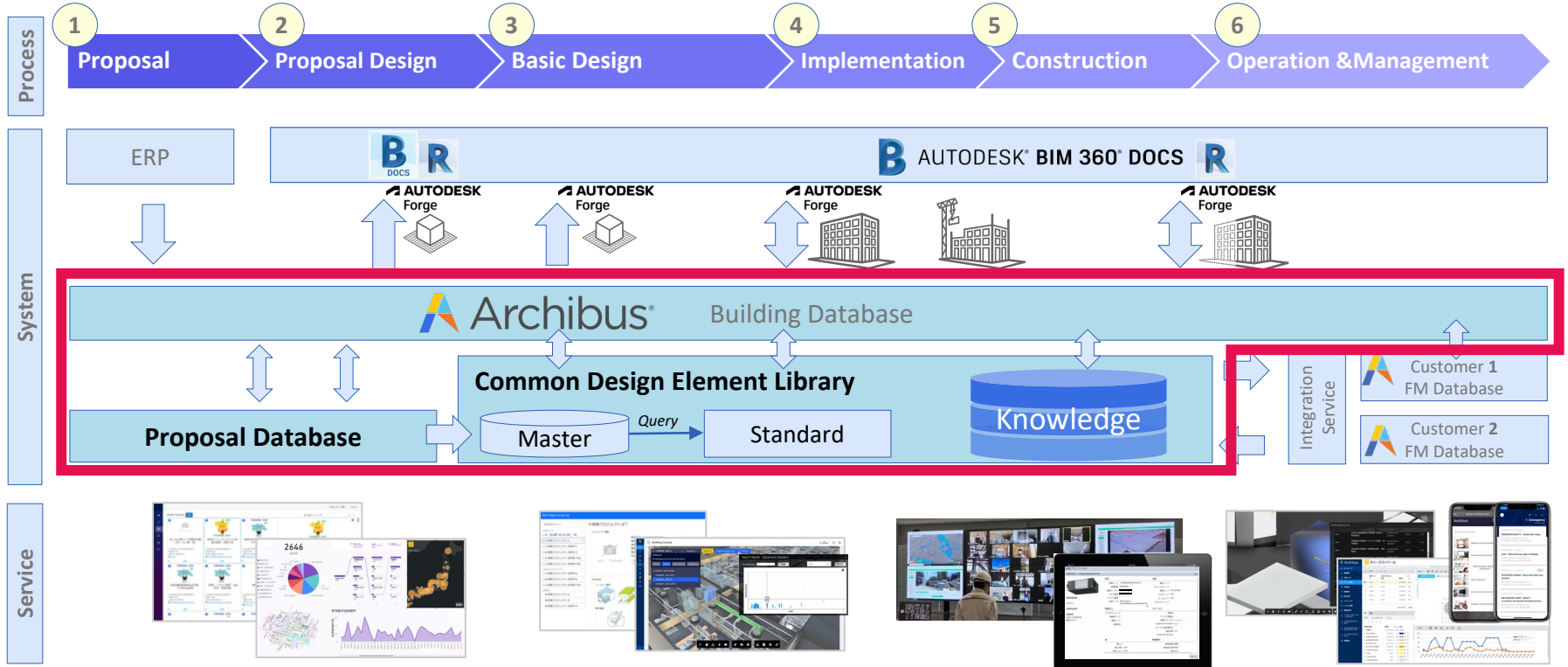
- Data update in PIM & collaborate with AIM
 - Reduce time to prepare AIM



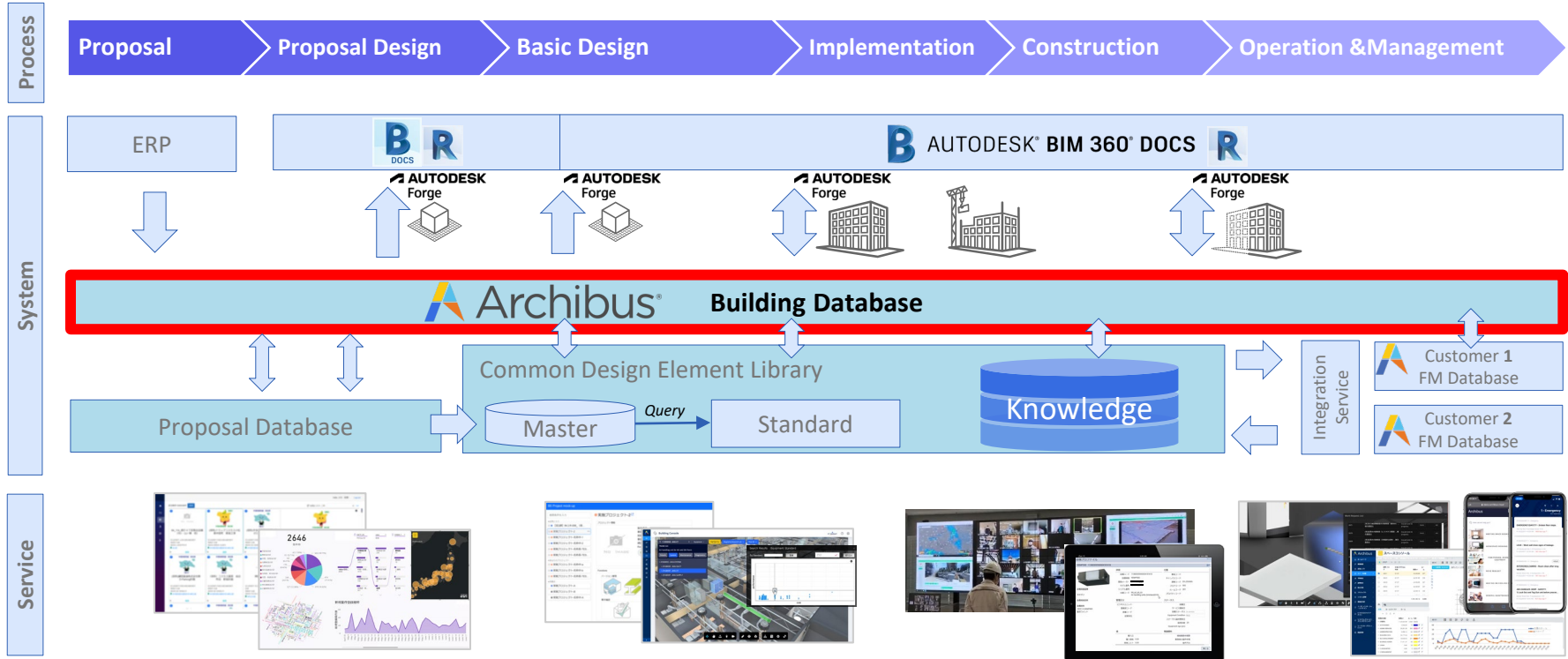


SpacelQ project

Overview of SpaceIQ project



Establish Building database

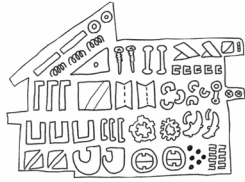


Build Common Design Element Library(DEL)



Master data

Master databases beyond the framework of each manufacturer



Standard data

Standard data packaged with multiple master data combinations



Knowledge data

Project Knowledge data containing product spec info defined in design/construction/maintenance processes



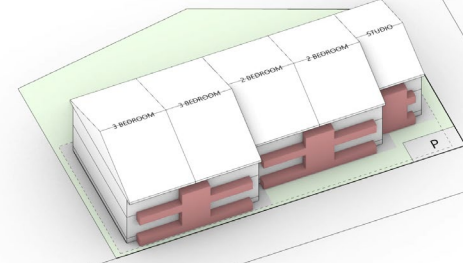
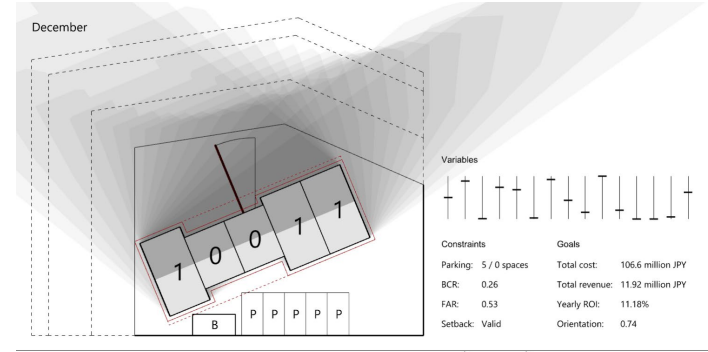
Physical data

operational data, including building materials and equipment

Create Proposal database



Proposal DB



Challenges we are working on

WHAT

Proposal

Proposed Design

Basic Design

Implementation

Construction

Operation & Management



Door D-156

Property	Value
Height	6'-8"
Width	3'-0"
Type	Interior Passage
Material	Wood

manager



Facility manager



field worker

Door D-156

Property	Value
Type	Interior Passage
Omniclass #	23-17 11 15 13
Omniclass Title	Flush Wood Doors
Core	Solid

Door D-156

Property	Value
Fire Rating	60 min
Acoustic STC	30
Acoustic OITC	29



Door D-156

Property	Value
Description	Woodgrain Flush Finished Red Oak Prehung Interior Door
Manufacturer:	JELD-WEN
Model #	707449
Style:	Passage
Core:	Solid mineral
Frame:	Mineral Composite
Thickness:	1-3/4 inch
Jamb Width:	4-9/16 inch
Jamb Type:	Split
Jamb Species:	Stainable Pine
Hardware	Brushed Chrome
Finish:	Natural
Door Finish:	Natural



Door D-156

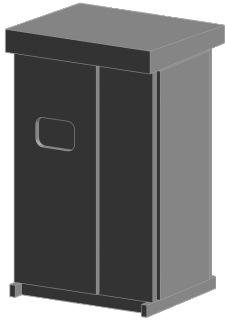
Property	Value
Date Installed	10/15/2013
Manufacturer	Darpet
Model #	76-3680-ERD
AssetTag	D-12-245
Barcode	4285125678
Installer	ABC Contractors
Key#	P-98C



Door D-156	
Property	Value
Description	Main Door 1
Type	Interior Passage
Height	6'-8"
Width	3'-0"
Material	Wood
Type	Interior Passage
Omniclass #	23-17 11 15 13
Omniclass Title	Flush Wood Doors
Core	Solid
Fire Rating	60 min
Acoustic STC	30
Acoustic OITC	29
Description	Woodgrain Flush Finished Red Oak Prehung Interior Door
Style:	Passage
Core:	Solid mineral
Frame:	Mineral Composite
Thickness:	1-3/4 inch
Jamb Width:	4-9/16 inch
Jamb Type:	Split
Jamb Species:	Stainable Pine
Hardware Finish:	Brushed Chrome
Door Finish:	Natural
Date Installed	10/15/2013
Manufacturer:	Darpet
Model #	76-3680-ERD
AssetTag	D-12-245
Barcode	4285125678
Installer	ABC Contractors
Key#	P-98C



Challenges we are working on



プロパティ

bo-一般_標準キュービクル SSL-N

衛生器具 (1)

システム タイプ

システム名

システム省略形

識別情報

イメージ

コメント

マーク

設備 工程

電気 科目

電気 工種

Part Number

ワークセット

編集者

相の作成

構築相

解体相

IFC パラメータ

IFC Global Unique ID

モデル プロパティ

マンホール_B位置X方向

マンホール_L位置Y方向

データ

設備機器 集計分類

設置方法

備考

その他

信頼

製造番号

設置年月

プロパティヘルプ

タイプ プロパティ

ファミリID: d衛器具 水槽類 受水槽

タイプID: W2000xD1000xH1000

ローFLD...

複製ID...

名前変更ID...

タイプ パラメータID

パラメータ	値
負荷分類	
構造	
質量	
寸法	
受水槽_W	2000.0
受水槽_D	1000.0
受水槽_H	1000.0
機械	
WFW	
HWFW	
CWFW	
識別情報	
アセンブリ コード	
説明	
価格	
イメージ(タイプ)	
コメント(タイプ)	
URL	
モデル	
製造年	

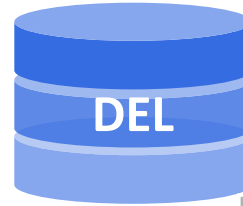
これらのプロパティの動作

<< プレビュー(B)

OK

キャンセル

適用



Equipment Category 4		Parameter Fields									
Equipment Category 3		Parameter Fields									
Equipment Category 2		Parameter Fields									
Equipment Category 1		Parameter Fields									
Equipment		Param1	Param2	Param3	Param4	Param5	...	Param10	...		
Equipment registered in Design Element library	Equipment1										
	Equipment2										
	Equipment3										
	Equipment4										
	Equipment5										
	Equipment6										
	Equipment7										
	Equipment8										
...											

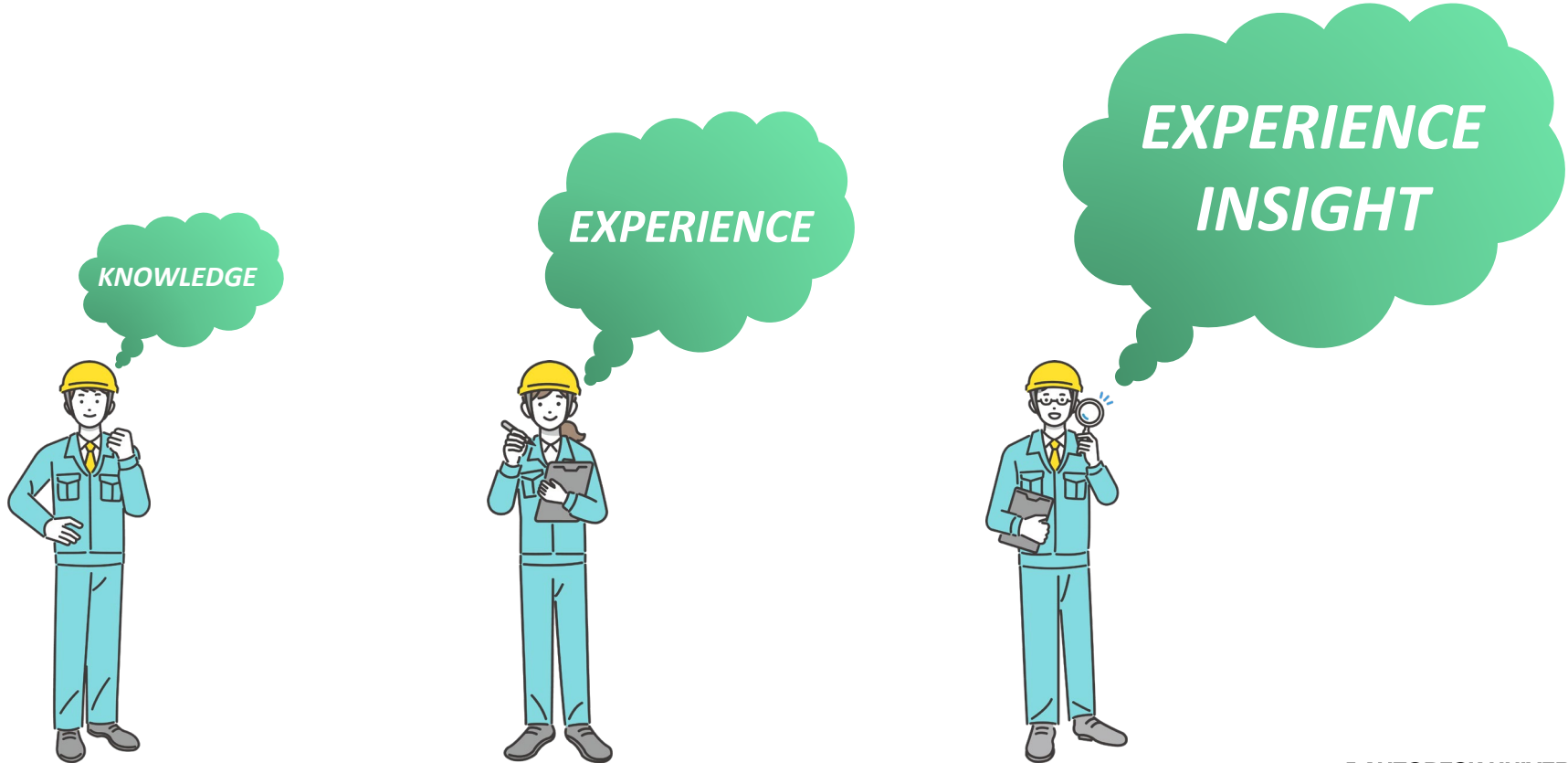


AUTODESK **Construction Cloud**



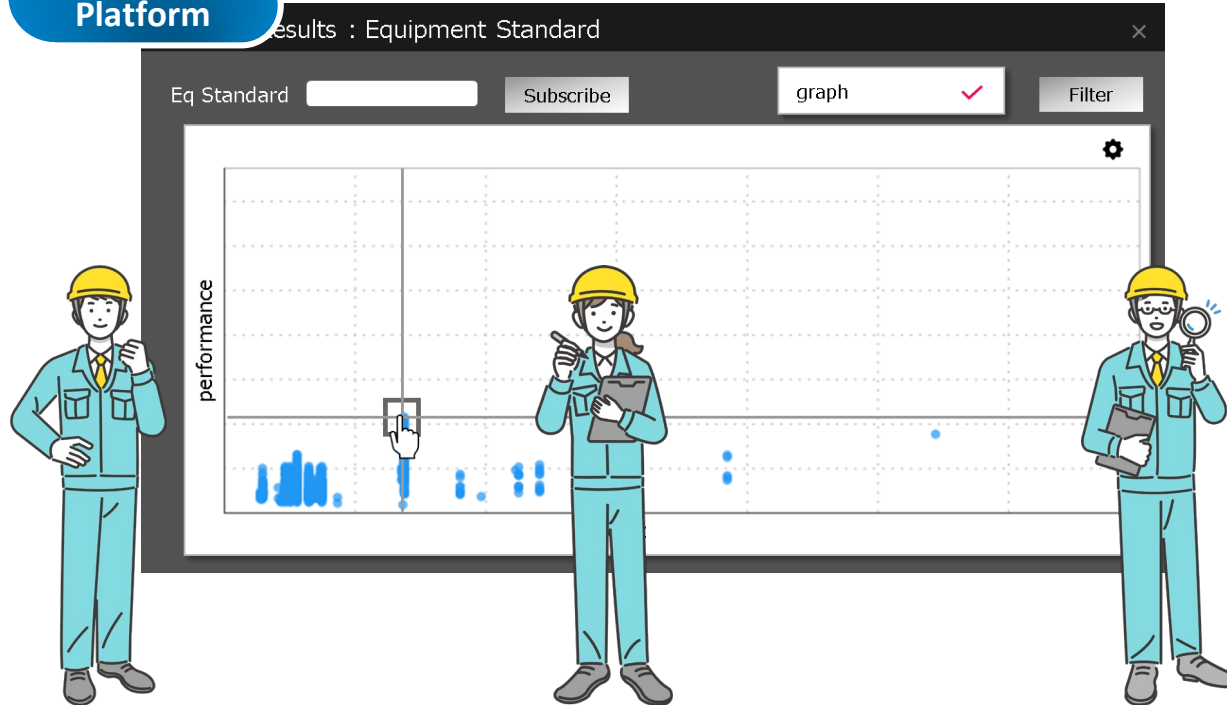
Design Phase

Design Phase (As-Is)



Design Phase (To-Be)

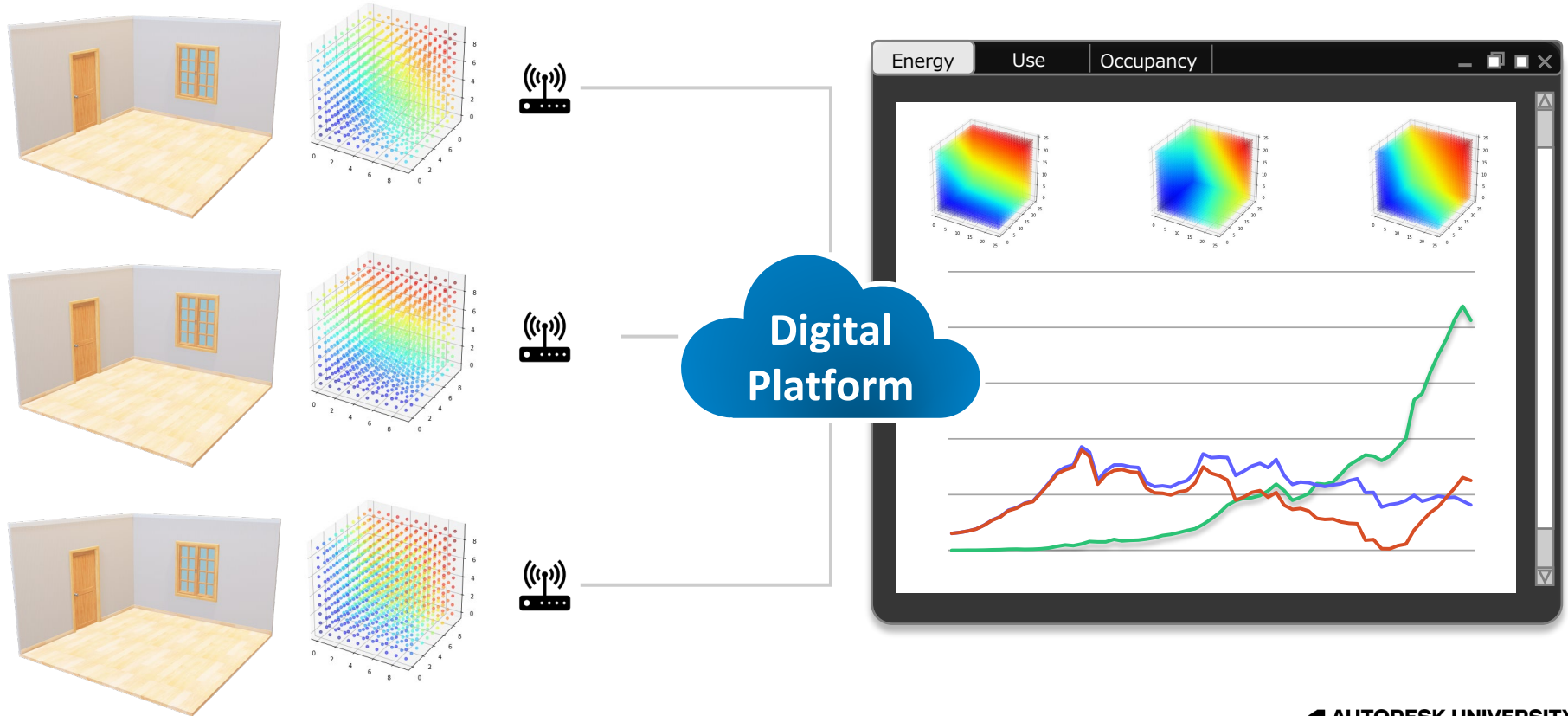
Digital
Platform



Confidential

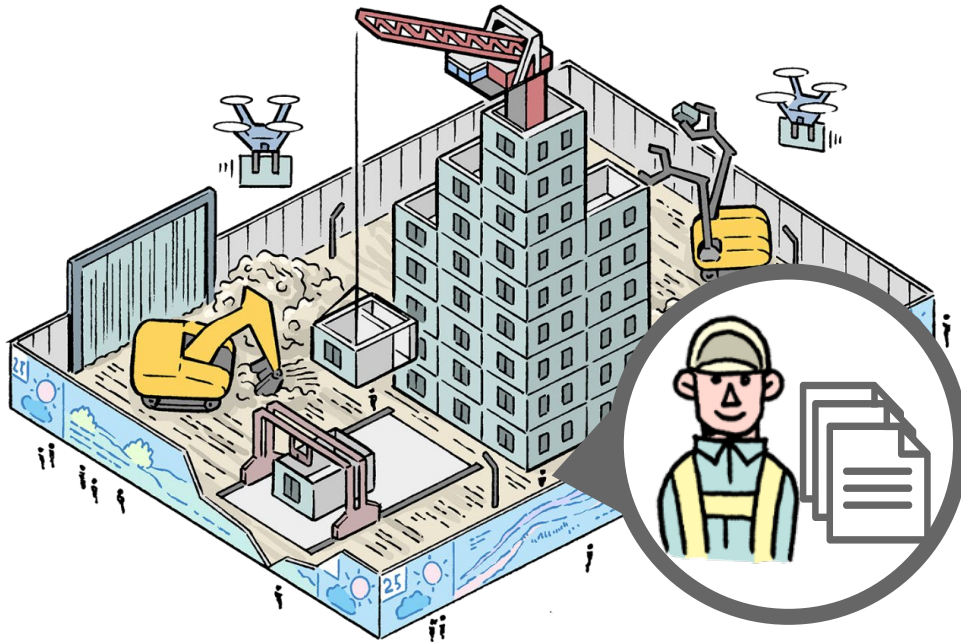


Design Phase (To-Be)



Construction-to-Handover Phase

Construction-to-Handover Phase (As-Is)



Construction-to-Handover Phase (As-Is)

1 week later ...



2 week later ...



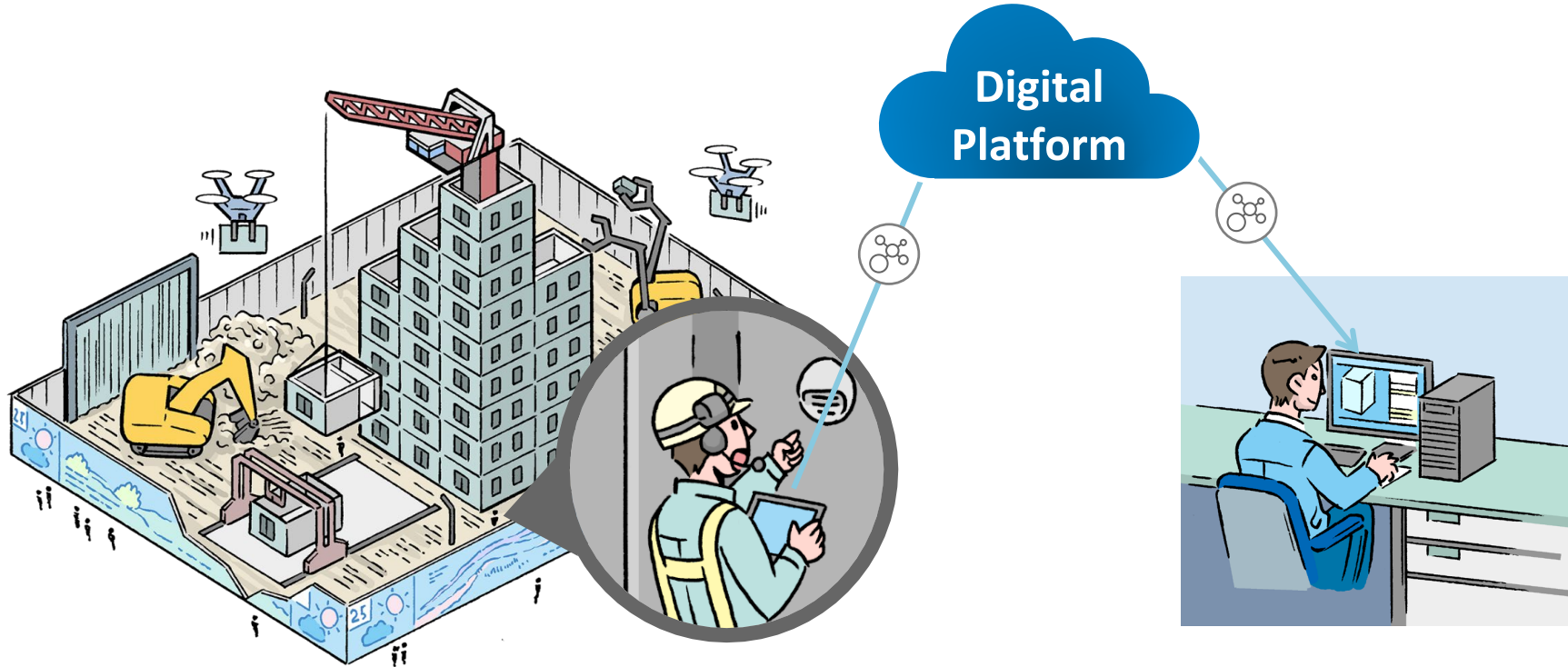
Human
errors

Long
time

3 week later ...

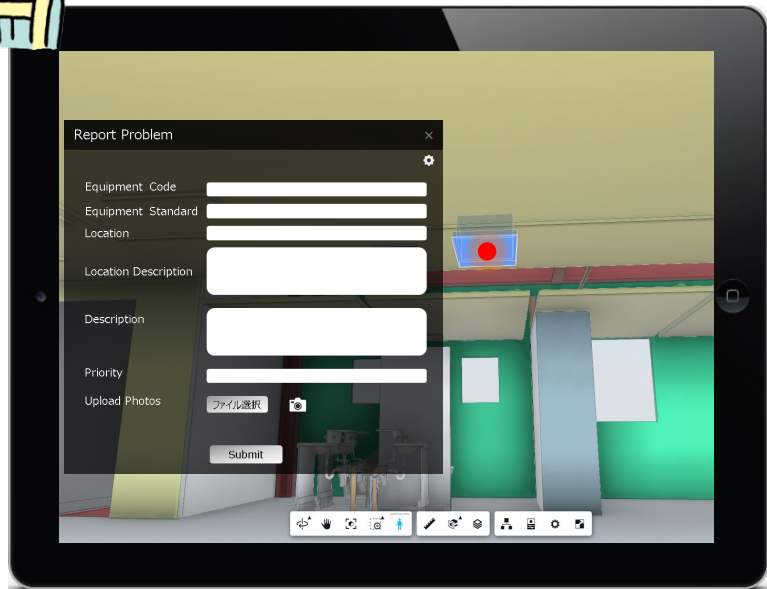


Construction-to-Handover Phase (To-Be)



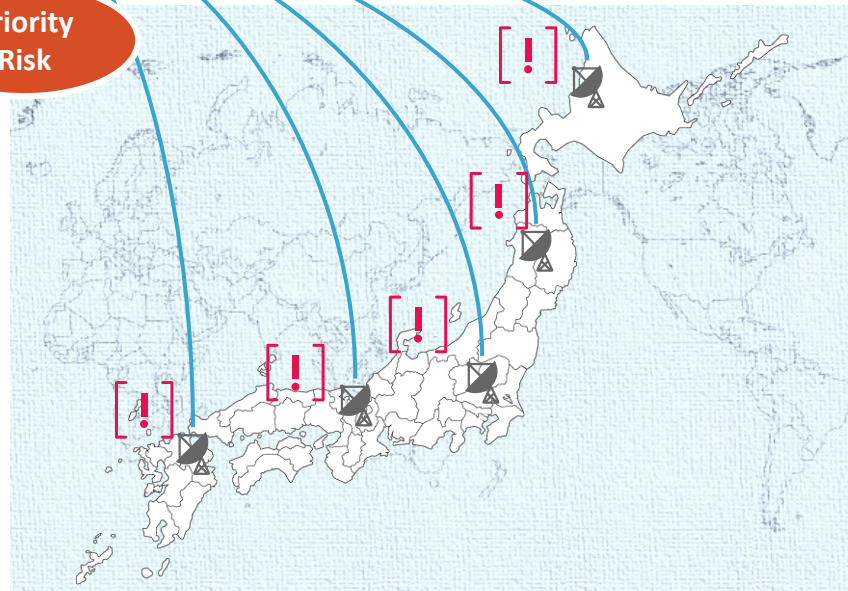
Operation & Management Phase

Operation & Management Phase (To-Be)



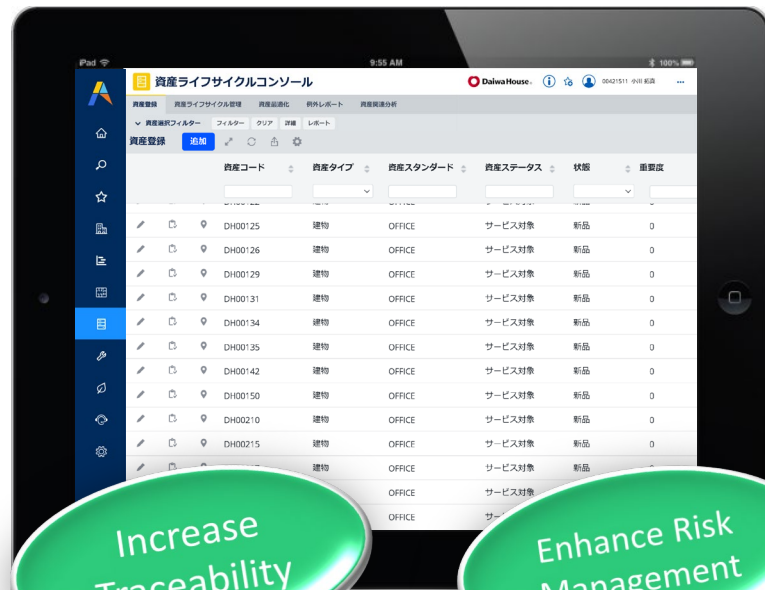
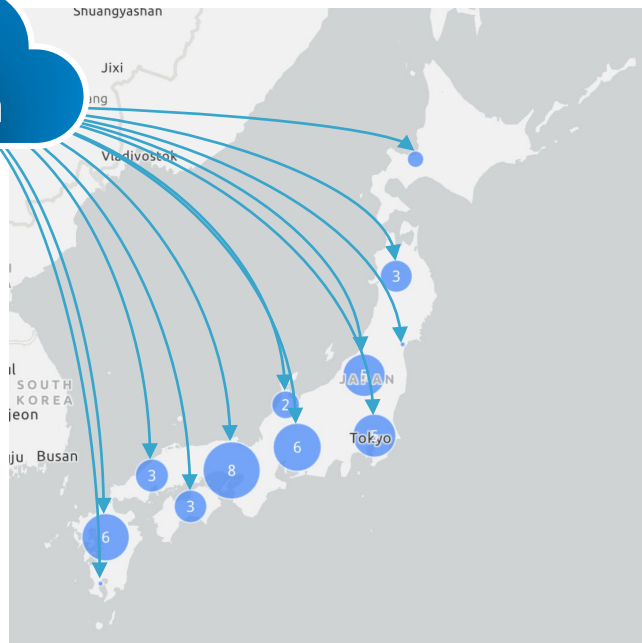
Digital
Platform

Priority
Risk



Operation & Management Phase (To-Be)

Digital
Platform



Increase
Traceability

Enhance Risk
Management



We aim to create, use and bolster new values, hope to realize a society in which people can live fulfilled lives.





Next Step

Today's summary

- What is Digital Value Chain
 - Value chain in digital society = Product + Information
 - Build the Digital Platform
- Key for Digital Platform
 - CDE to cover the entire process
 - Database to manage across all projects
 - Technology to connect each solution
- Daiwa House vision
 - Build the Digital Platform & achieve the Digital Value Chain by 2025
 - Next step = realize DX across industries!





Autodesk and the Autodesk logo are registered trademarks or trademarks of Autodesk, Inc., and/or its subsidiaries and/or affiliates in the USA and/or other countries. All other brand names, product names, or trademarks belong to their respective holders. Autodesk reserves the right to alter product and services offerings, and specifications and pricing at any time without notice, and is not responsible for typographical or graphical errors that may appear in this document.

© 2022 Autodesk. All rights reserved.