

we4bee – Earthquake Research with Bees

Prof. Dr. Jürgen Tautz

CCO | @we4bee_gug

Richard Hammerl

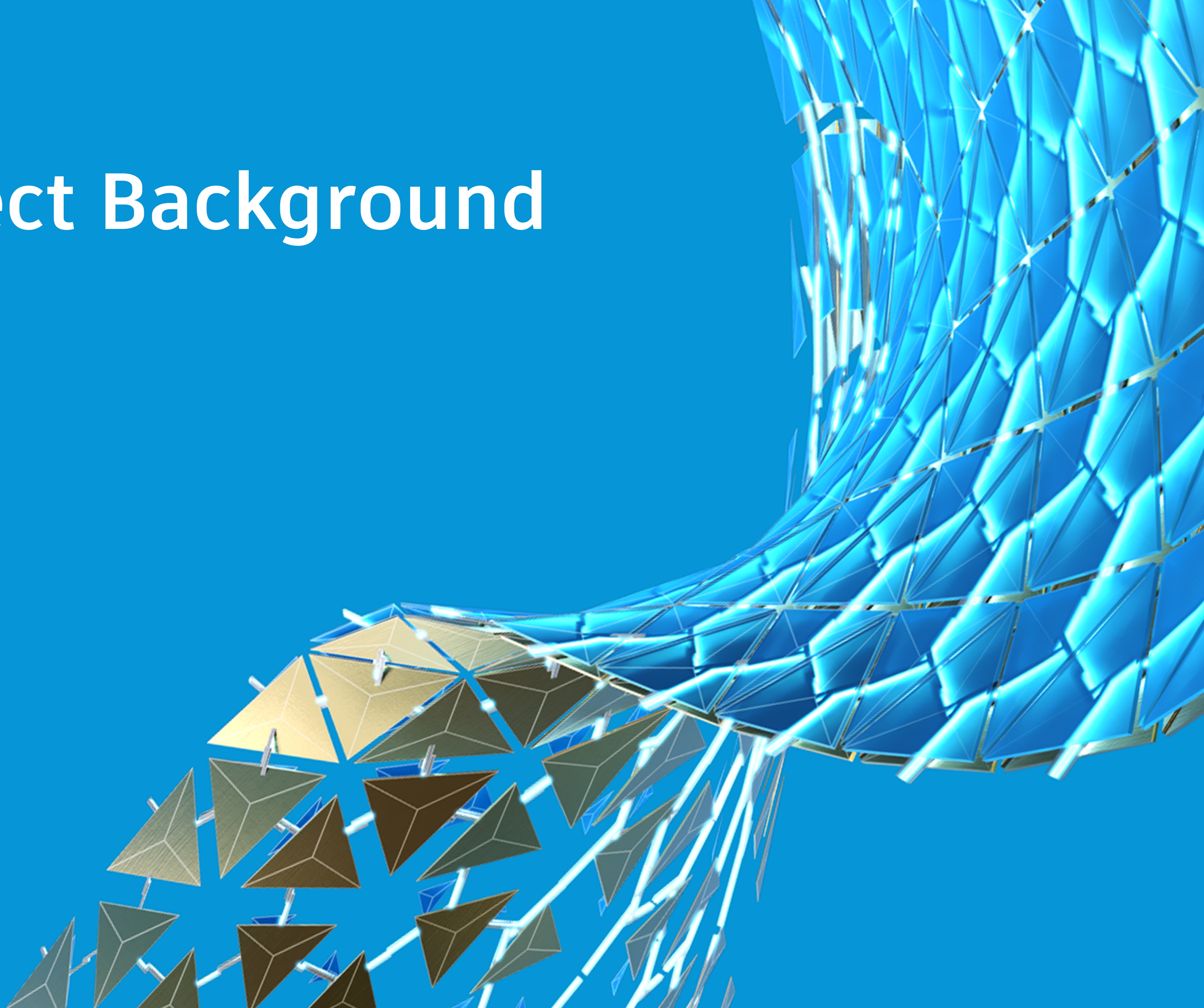
Fusion 360 Community Manager Electronics

Introduction of we4bee



Direct link: <https://youtu.be/U4tdsirU6GM>

Part I: Project Background



The Bee Expert about we4bee



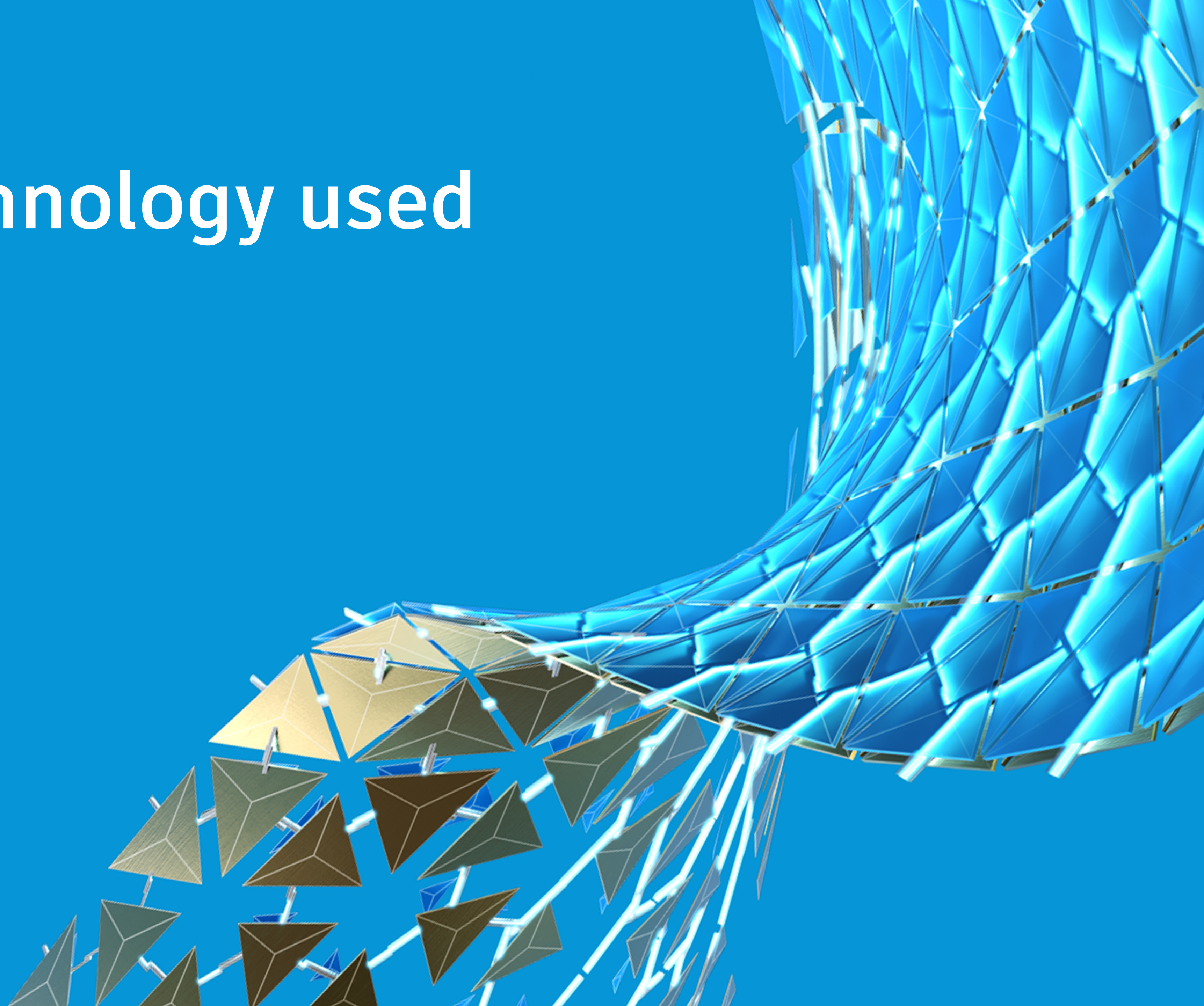
Prof. Dr. Jürgen Tautz

A Life dedicated to Bee Research

Prof. Tautz is a world-renowned bee expert, successful author and initiator of HOBOS (Honey Bee Online Studies). The HOBOS idea of researching bees and environmental events that influence the bees' behavior with the help of data collected by high-tech sensors is to be carried around the world from Germany with we4bee.

Direct link: <https://youtu.be/iAYEJloKWiI>

Part II: Technology used

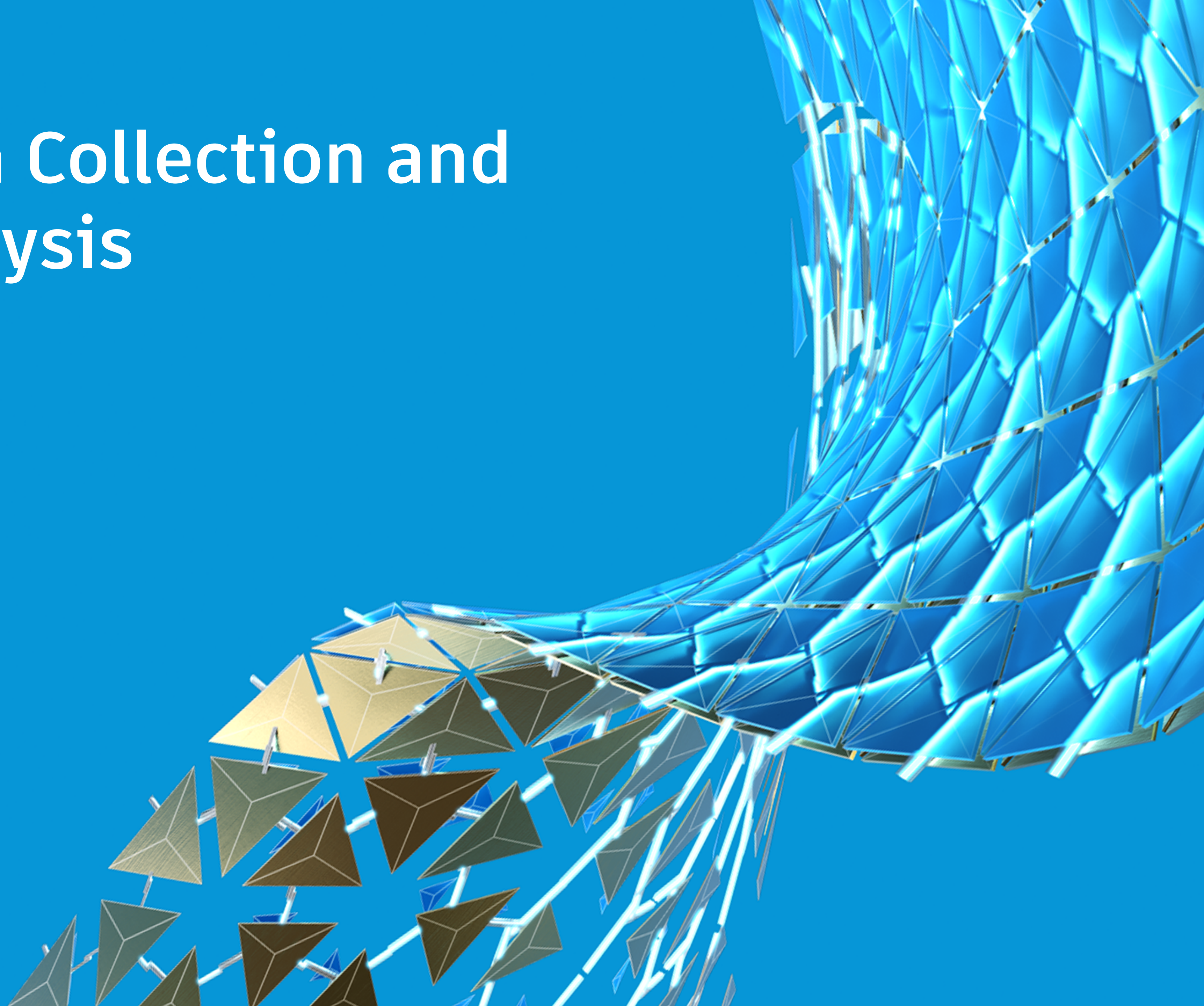


High-tech Beehives



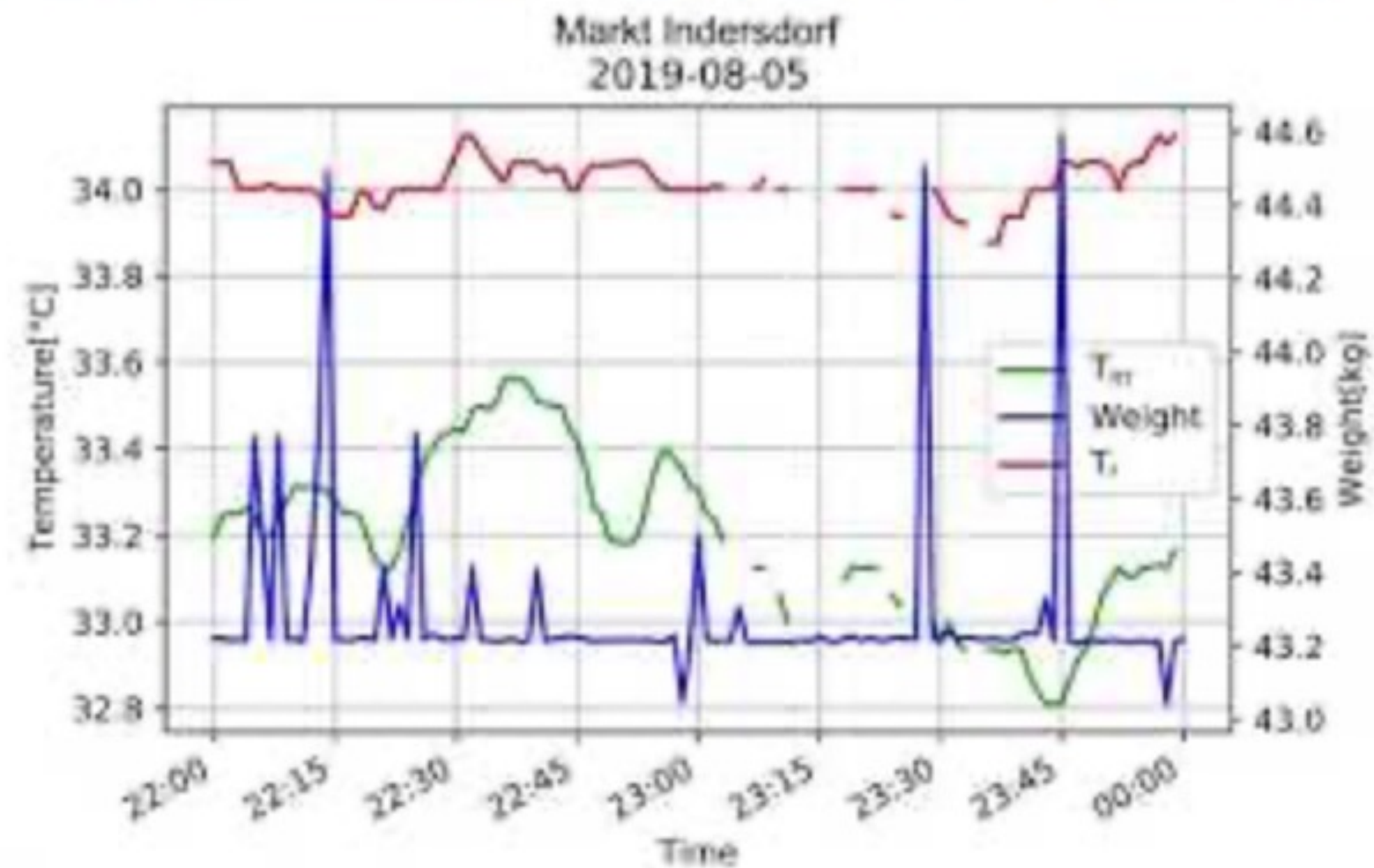
Direct link: <https://youtu.be/YCchXJXBpTQ>

Part III: Data Collection and Analysis



Data Collection and Analysis

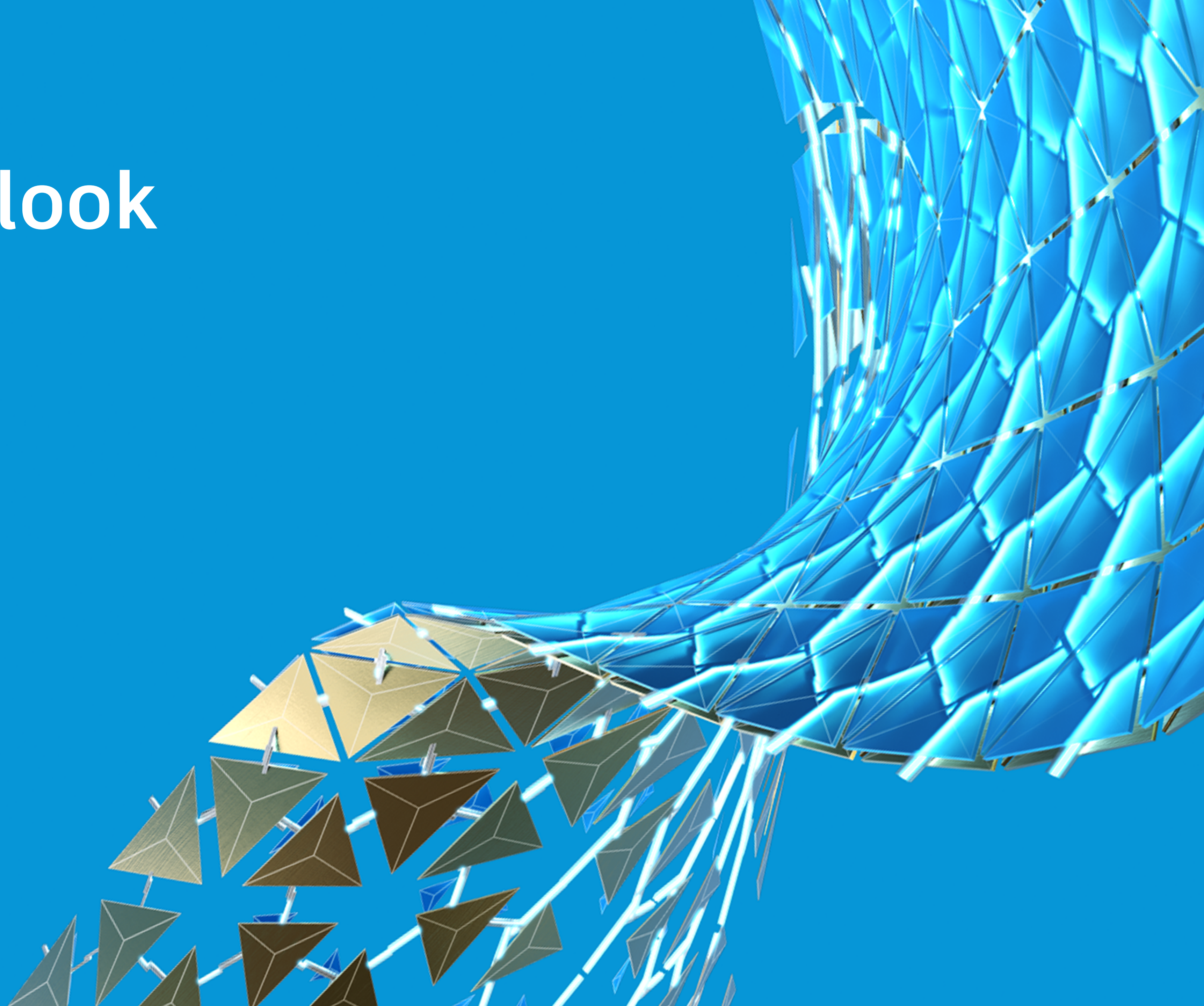
3.3 Data analysis – Types of anomalies: Sensor anomalies



Sensor anomaly with missing values in temperature measurement

Direct link: https://youtu.be/xg_UcFrMQg

Part IV: Outlook



Outlook for the Project



Direct link: https://youtu.be/pGskY_tMTBc



Autodesk and the Autodesk logo are registered trademarks or trademarks of Autodesk, Inc., and/or its subsidiaries and/or affiliates in the USA and/or other countries. All other brand names, product names, or trademarks belong to their respective holders. Autodesk reserves the right to alter product and services offerings, and specifications and pricing at any time without notice, and is not responsible for typographical or graphical errors that may appear in this document.

© 2020 Autodesk. All rights reserved.

