

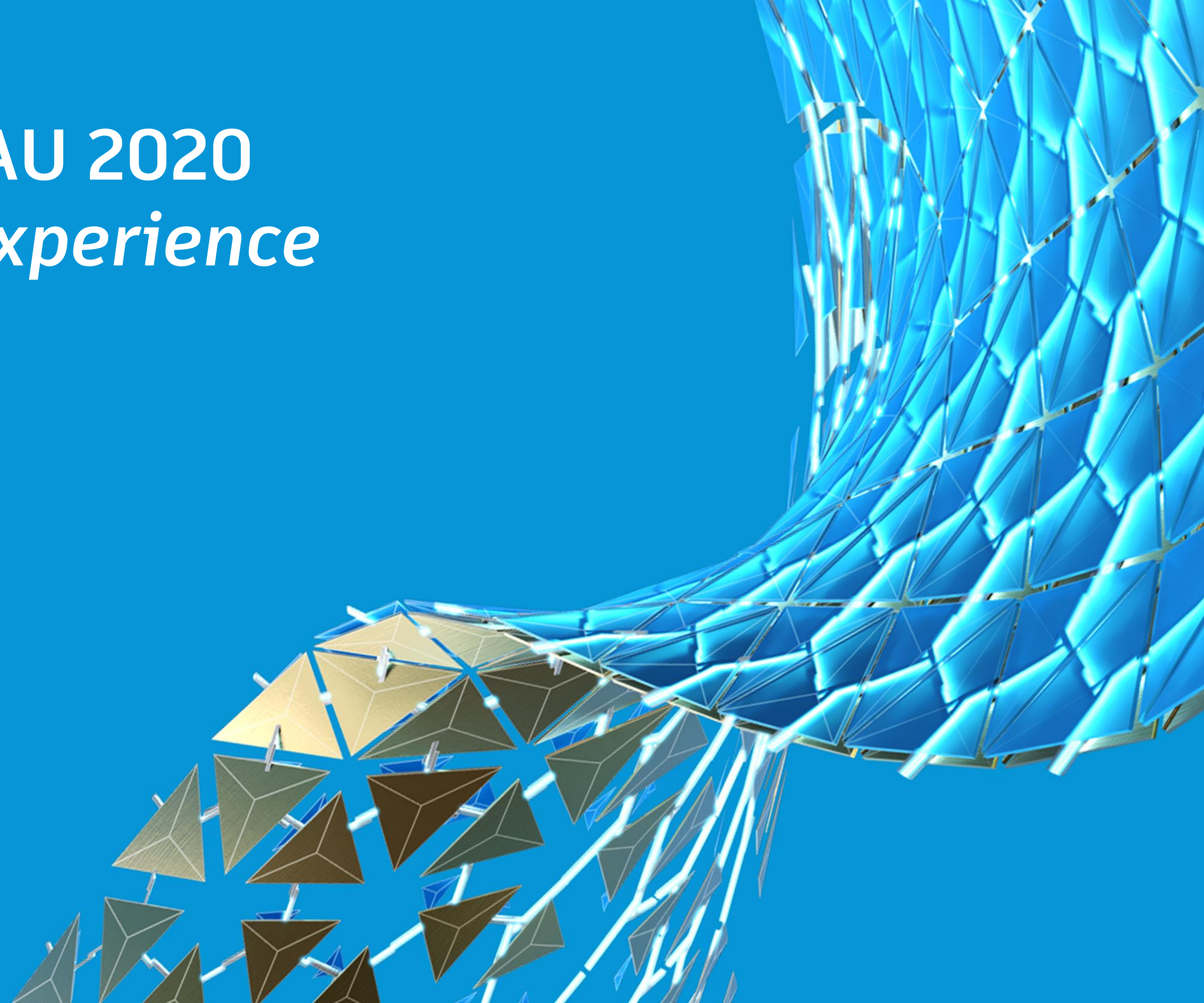
Structural Design to Fabrication: Revit and Advance Steel - Buddies for Life

Deepak Maini

National Technical Manager, Cadgroup Australia

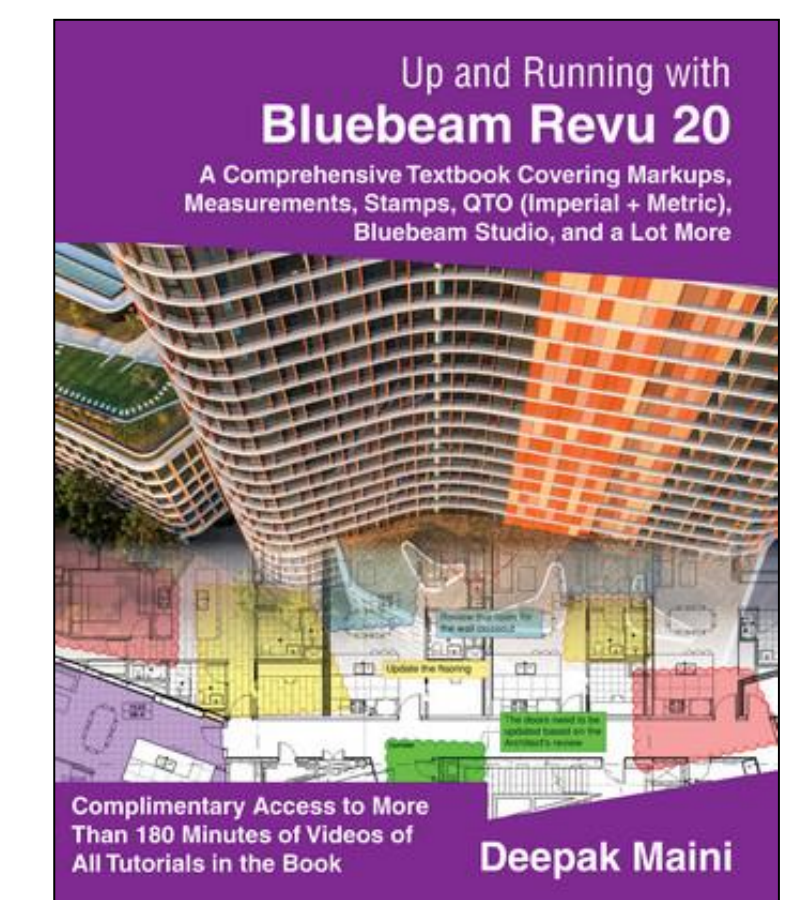
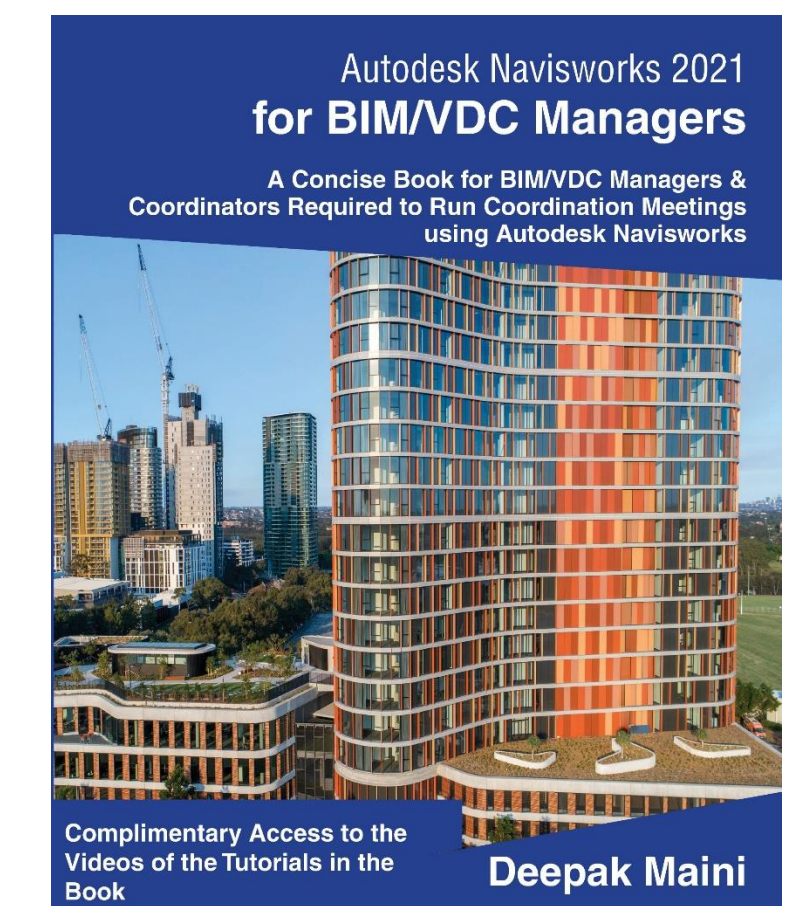
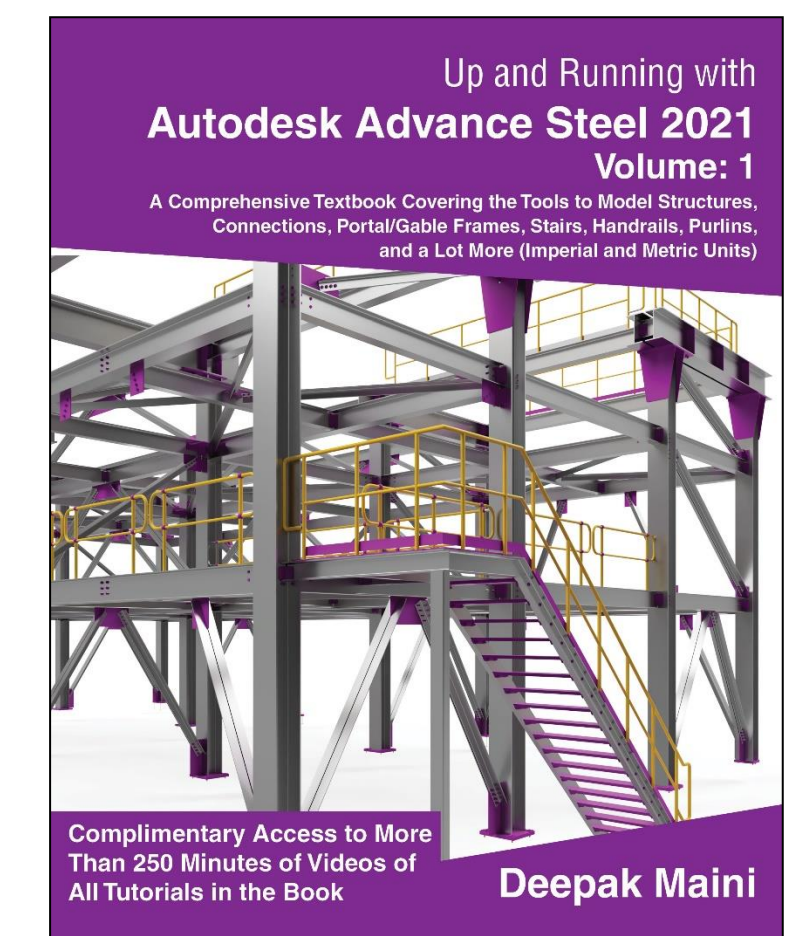
Welcome to AU 2020

The Digital Experience



Deepak's Introduction

- National Technical Manager – Named Accounts, Cadgroup Australia
- Qualified Mechanical Engineer
- Around 21 years of experience in the industry
- Autodesk Expert Elite, Autodesk BIM 360 Certified Consultant, Bluebeam Certified Consultant and Instructor
- Awarded the “[Best Autodesk University Speaker](#)” two years in a row at [AU2018](#) and [AU2017](#) in Las Vegas
- Voted “[Top Speaker](#)” at the [Bluebeam XCON 2019](#) in Washington DC
- Author of the [Up and Running with Autodesk Navisworks](#), [Autodesk Navisworks for BIM/VDC Managers](#), [Up and Running with Autodesk Advance Steel](#) and [Up and Running with Bluebeam Revu](#) series of books
- Guest lecturer at the [University of Technology Sydney \(UTS\)](#) and [University of New South Wales \(UNSW\)](#), [University of Salford UK](#), [Virginia Tech University](#)





My Aim: Have Lots of Fun as we Learn



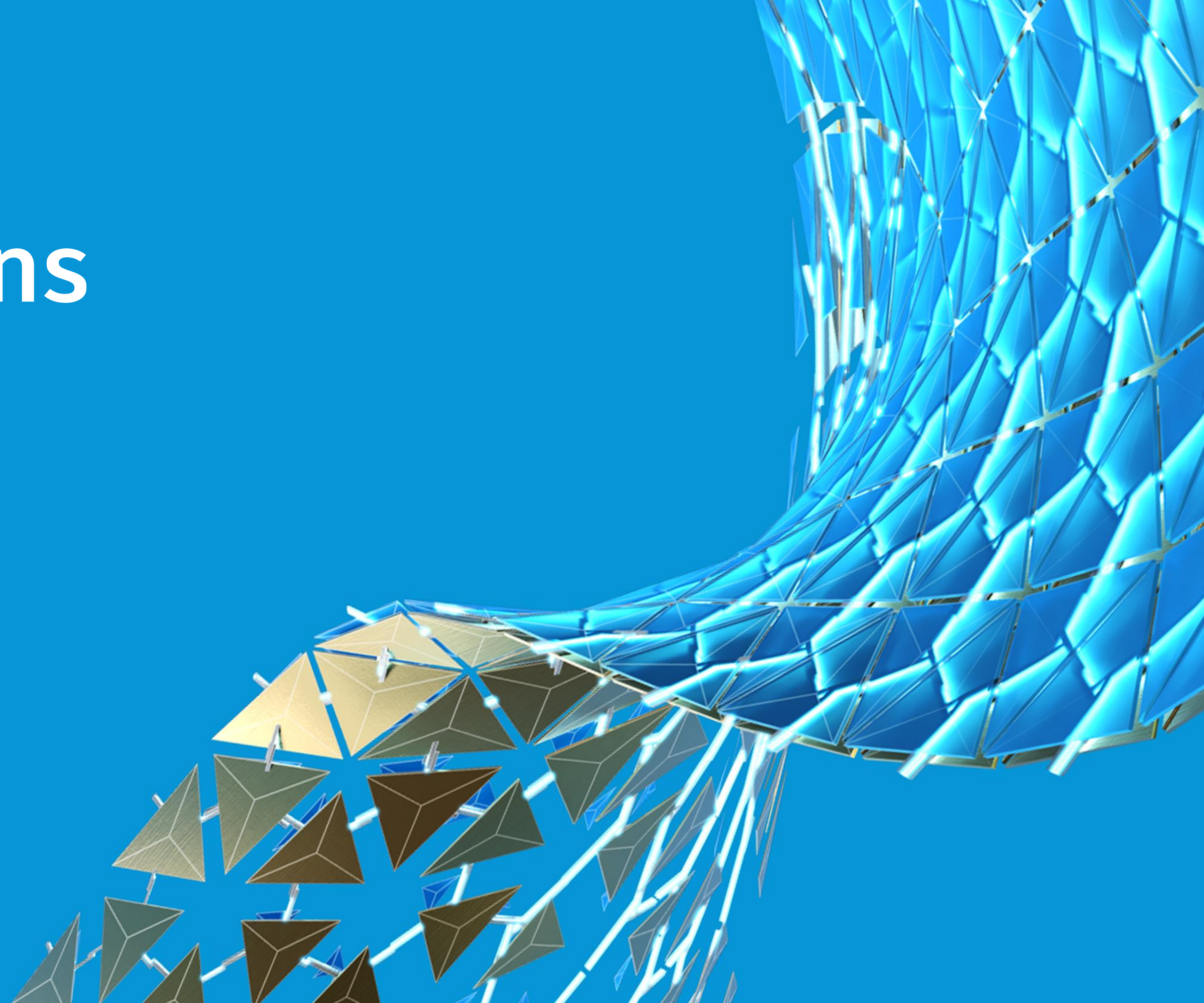
Acknowledgements

- Janice Miller-Kellerman and Adam Sopko from the AU Team
- Patricia Lundberg and Lauren Ames from the AU Speaker Management Team
- Pier-Andre Maynard, Nicolas Martineau, Joël St-Pierre and Autodesk Technical Crew

Learning Objectives

- Learn how to export a Revit Structure model and import it into Advance Steel.
- Learn how to create automated steel connections between the members imported from Revit.
- Learn how to generate automated fabrication drawings, BOMs, and DXF/NC files.
- Learn how to use Sync to review and import any Revit changes into Advance Steel or validate the Advance Steel model in Revit.

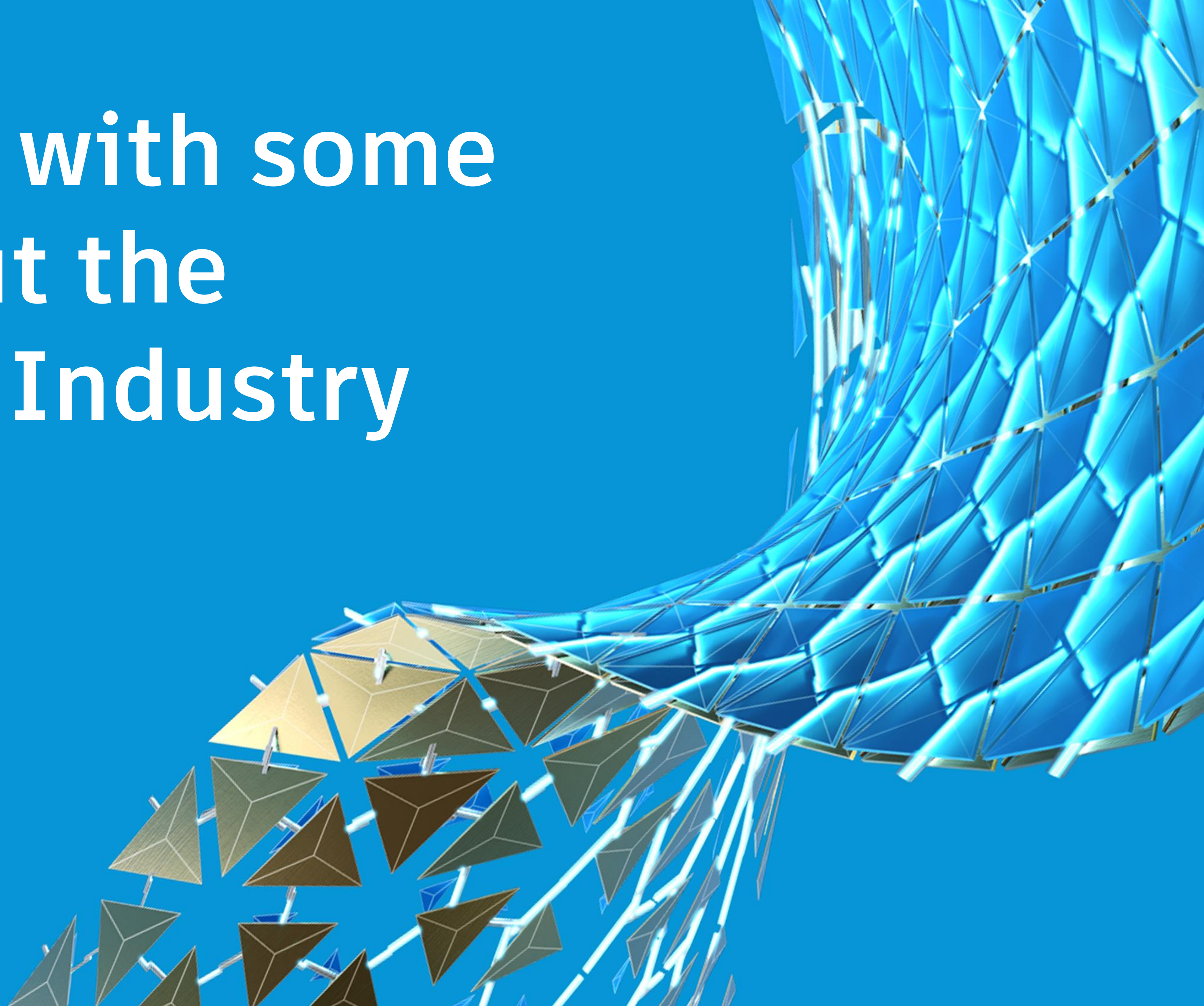
Inspirations



Story of Kendel Inverarity, Western Australia

- A 45 years old born and bred on the farm and grew up helping dad in the shed creating **steel trusses, gates, fences, yards**, you name it.
- Has a side business called **The Pig Poo Lady** which is basically selling **bags of shit**. Variety is the spice of life not to mention **beer money**.
- Was on 4wd motorbike **chasing sheep**. It was below **4° C (39F)**, the dog had **jumped** in the **dam** then on the **bike**, the sheep had gone in the **wrong direction**, she **hurt herself** opening a **cocky gate**.
- Decided to use the **Pig Poo Sales** and put herself through the **Drafting studies** as she wanted to be independent from our farming business.
- Plans for the immediate future: Learn **Dynamo, Pyrevit, Rhino 3D, Navisworks** and “**your Advanced Steel**”.

Let's Start with some Stats about the Structural Industry





MOST Critical Part of Design

For Ensuring Safety of the Occupants



Only 10% Construction Cost Relates to the Structure

Source: McGraw Hill Smart Market Report, World Economic Forum, Statistica, ENR



1st on Site

Build Foundations, Core, Skeleton

Source: McGraw Hill Smart Market Report, World Economic Forum, Statistica, ENR

Wind, Seismic, Gravity

Not Deflect or Vibrate Beyond Acceptable Limits

Source: McGraw Hill Smart Market Report, World Economic Forum, Statistica, ENR

14+ Structural Materials

**Foundations, Rebar, Structural Steel, Metal
Decks, Cold-formed Steel, Stud Walls...**

Source: McGraw Hill Smart Market Report, World Economic Forum, Statistica, ENR

Offsite and Prefab

Precast and Timber

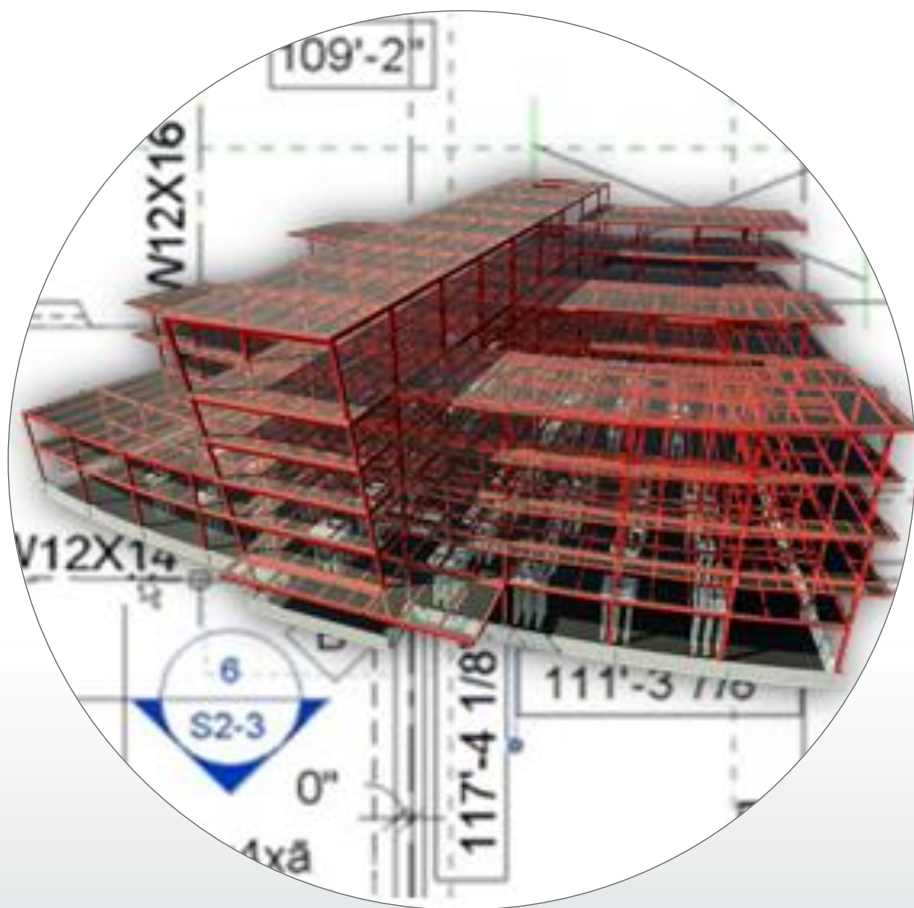
Source: McGraw Hill Smart Market Report, World Economic Forum, Statistica, ENR



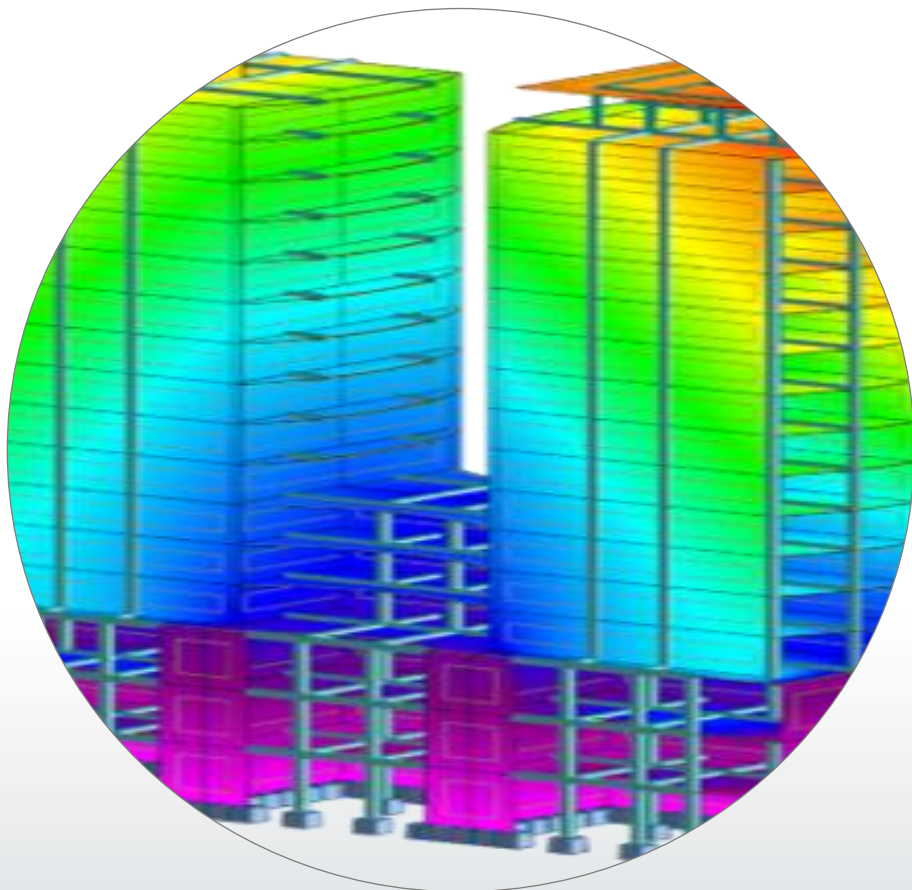
**One of the
Most
Disconnected
Industries**

Understanding the Structural Industry

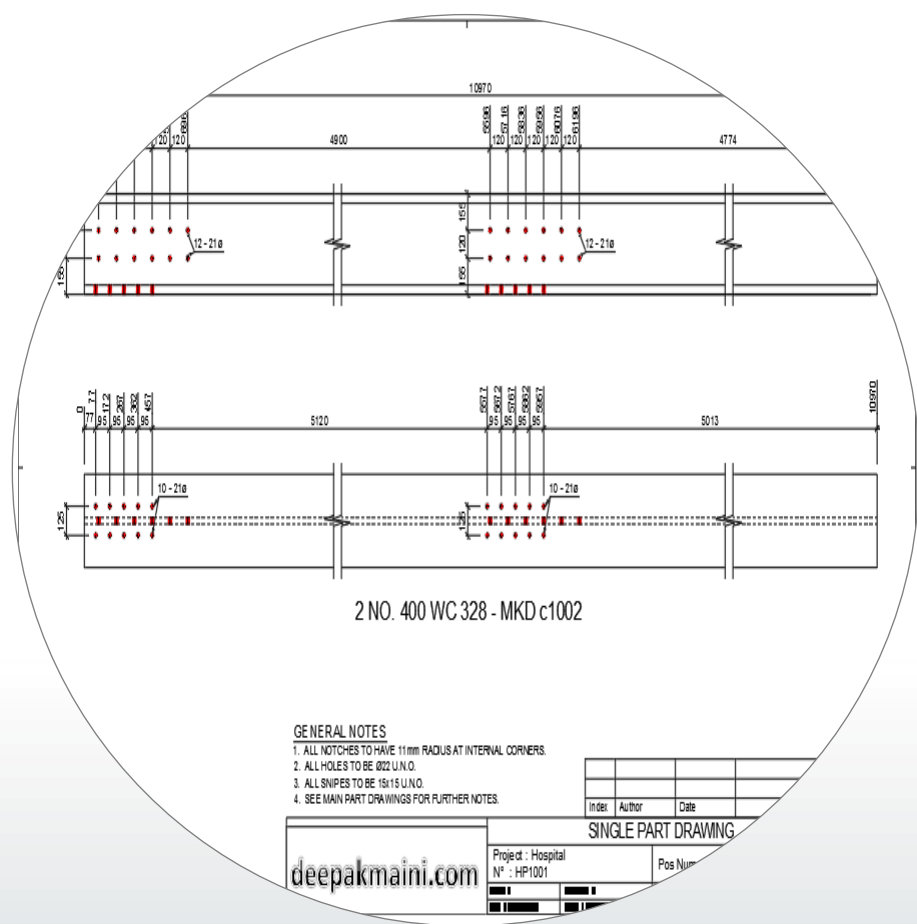
Structural Design



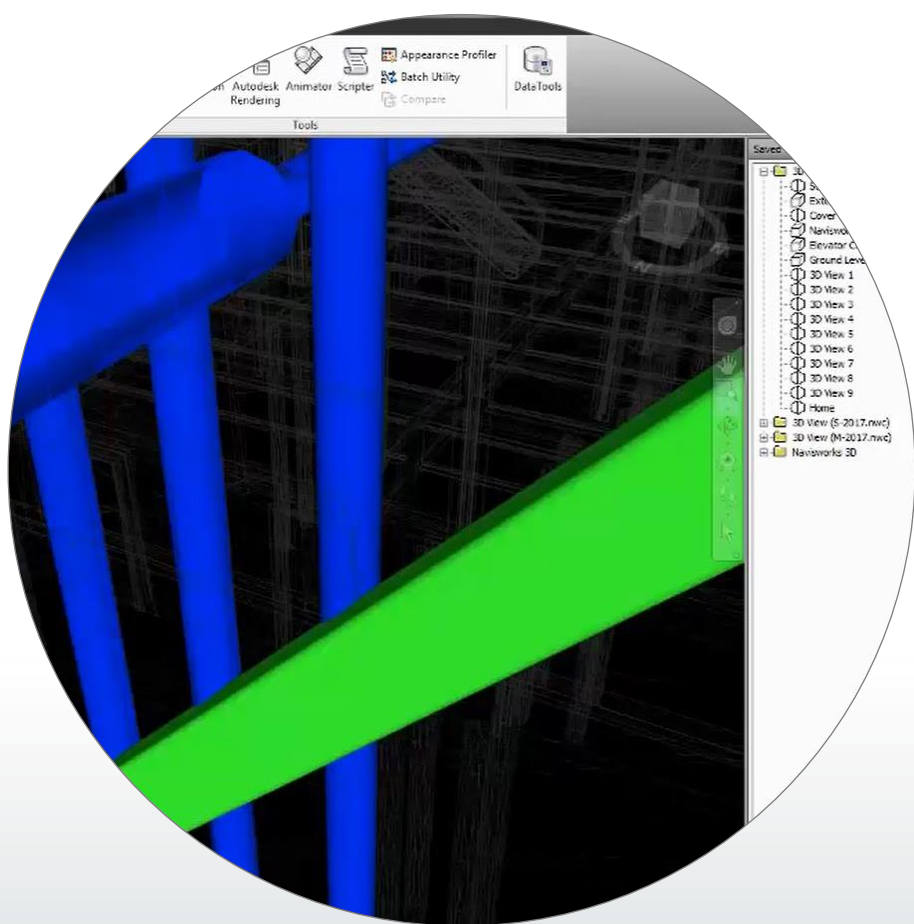
Simulation & Verification



Detail Documentation

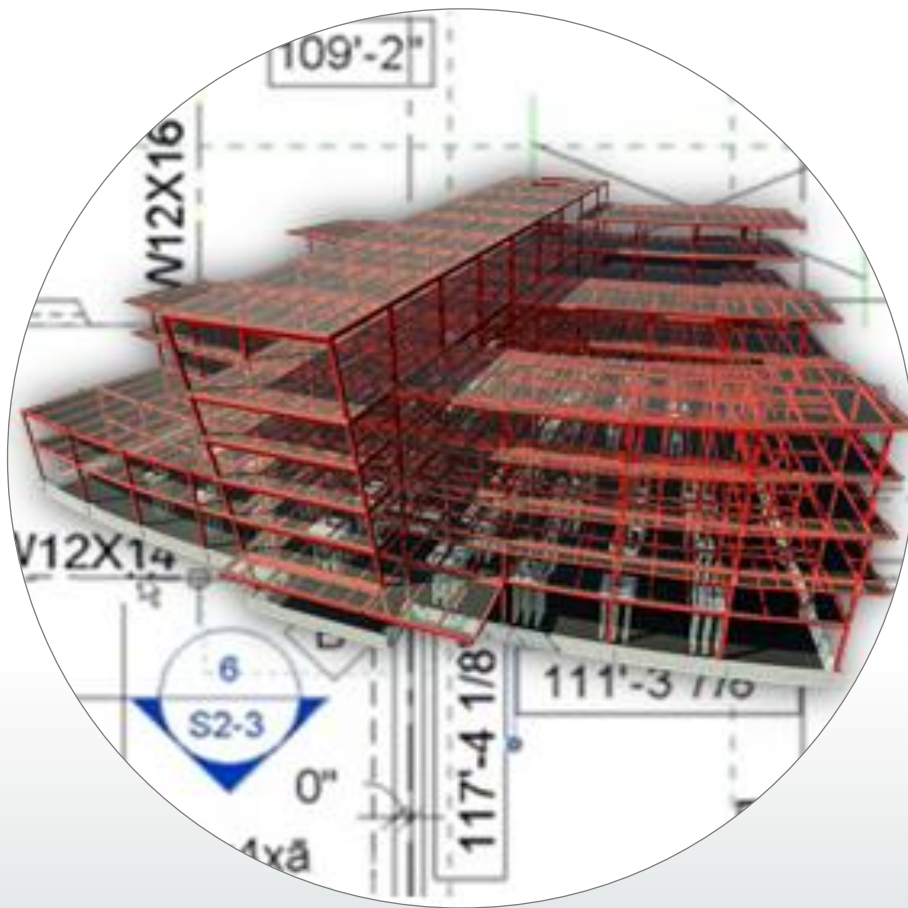


Fabricate & Install



Understanding the Challenges

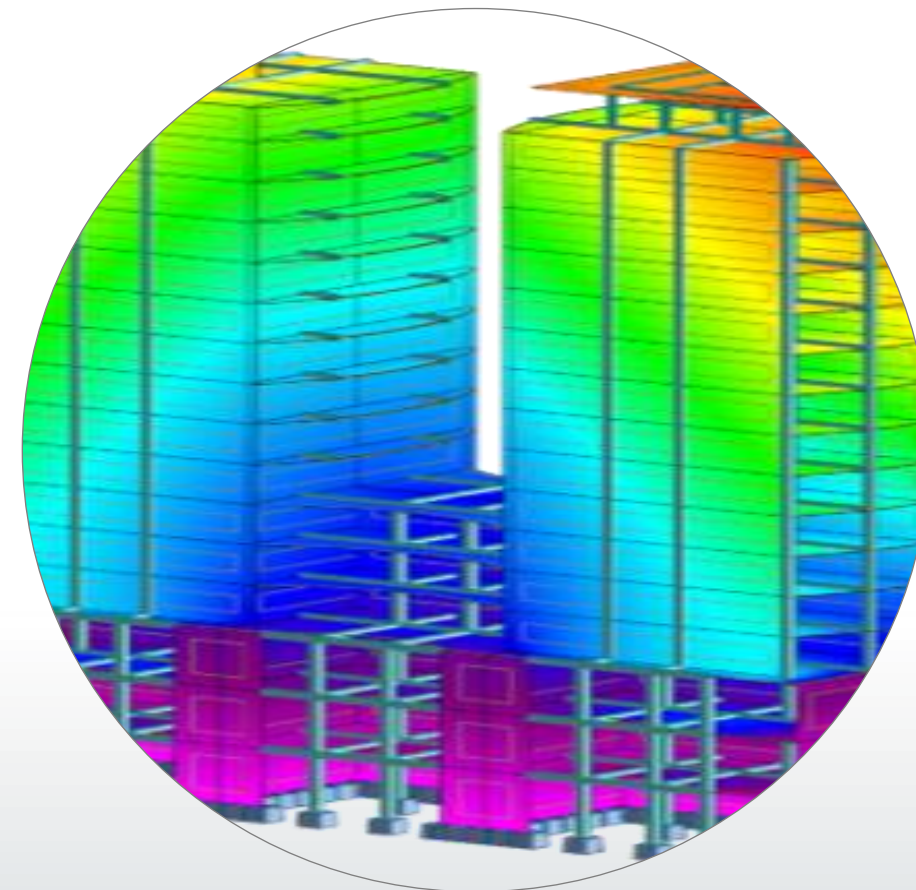
Structural Design



Engineers aren't Engaged Early Enough in Design

Impact of Poor Design Decisions

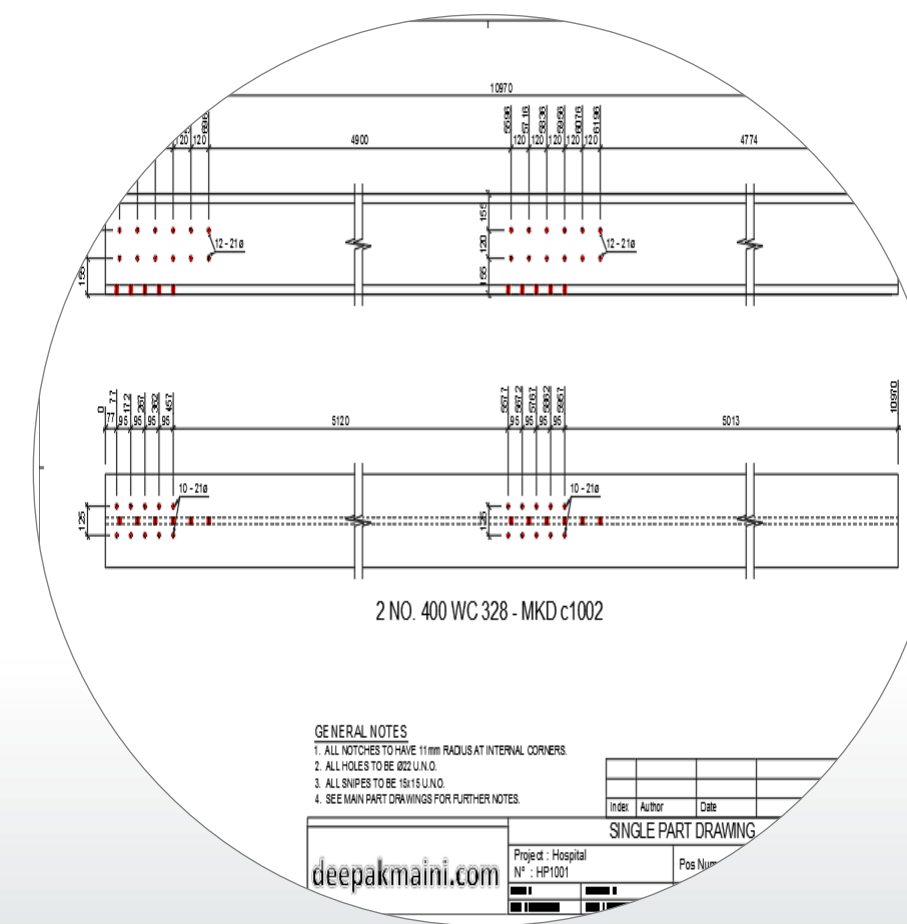
Simulation & Verification



Lack of Coordination

Changes Not Communicated

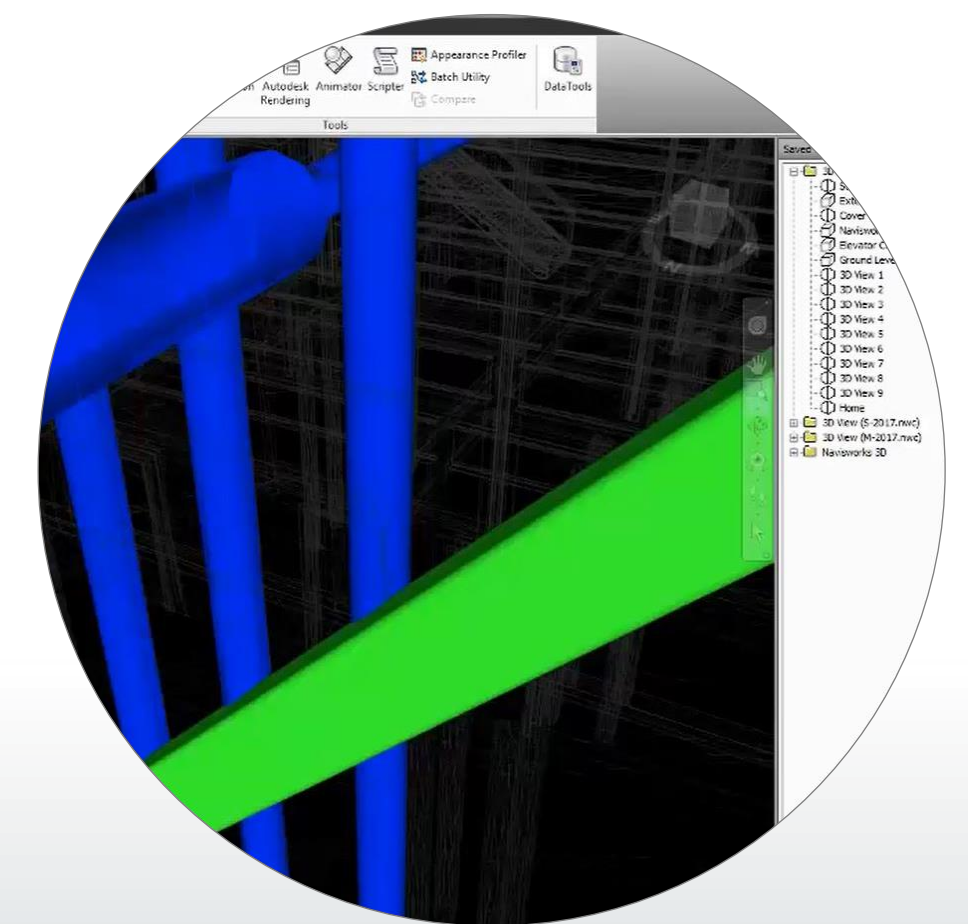
Detail Documentation



Disconnect between Coordination & Detailed Models

Incomplete/Incorrect Installation Instructions

Fabricate & Install



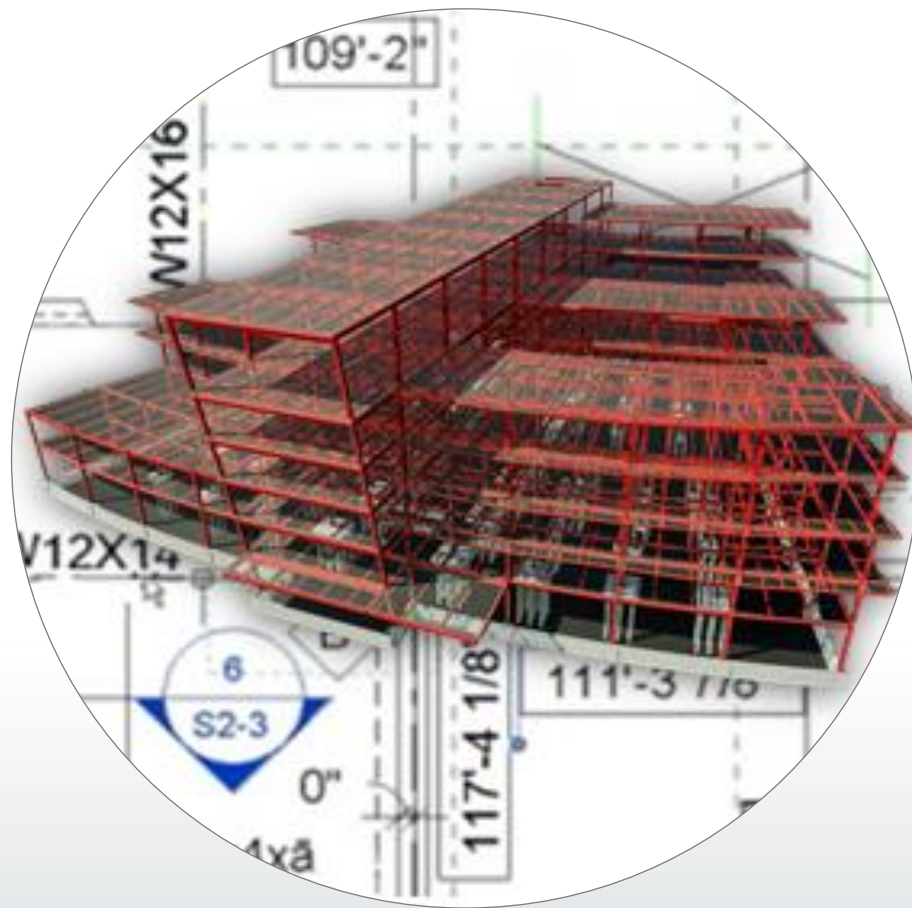
Owner Receives Incomplete As-builts





Understanding the Challenges

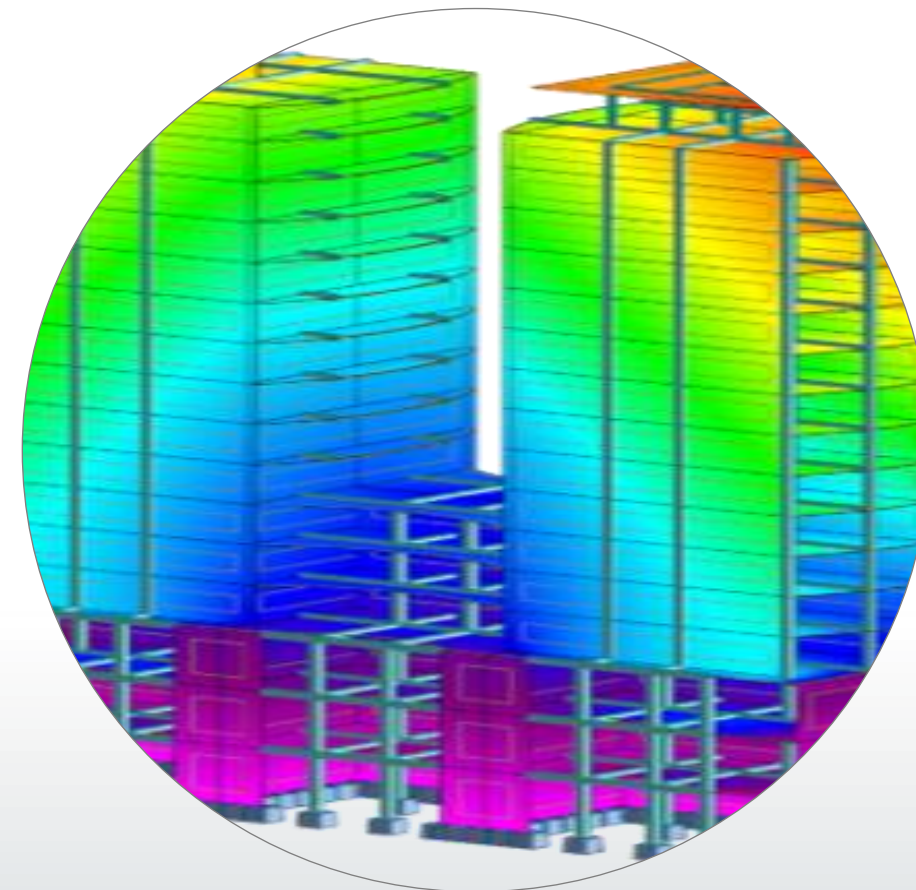
Structural Design



Engineers aren't Engaged Early Enough in Design

Impact of Poor Design Decisions

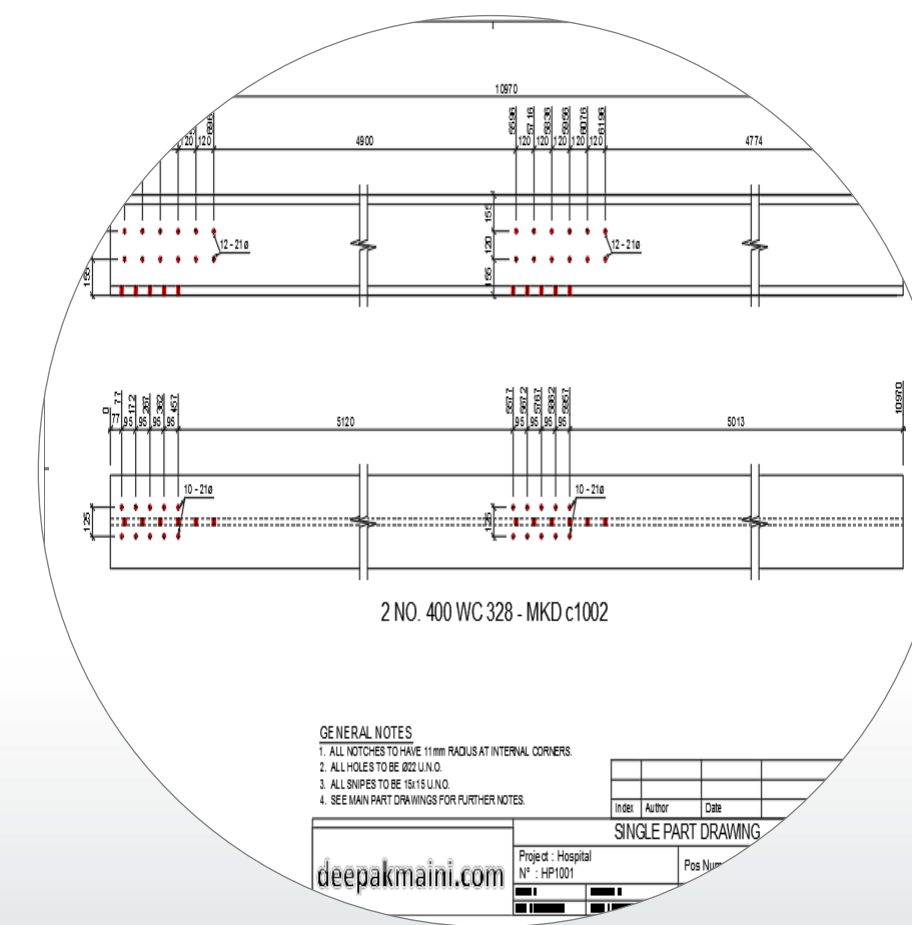
Simulation & Verification



Lack of Coordination

Changes Not Communicated

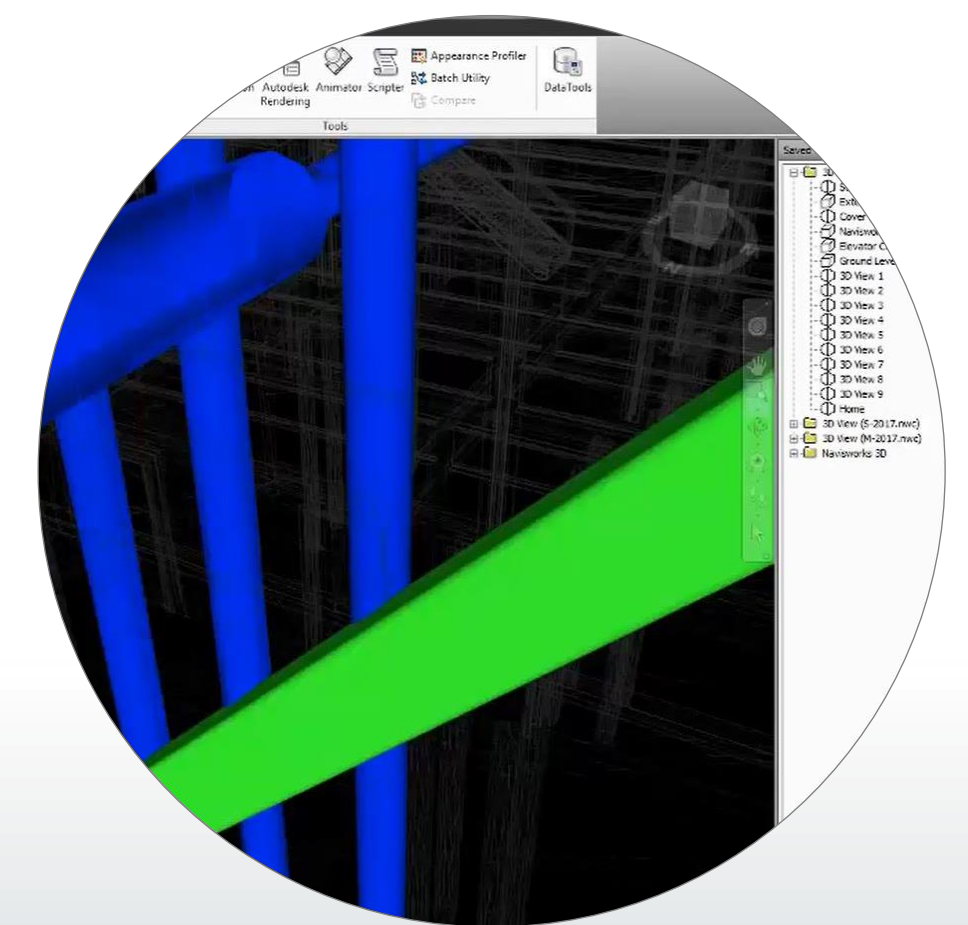
Detail Documentation



Disconnect between Coordination & Detailed Models

Incomplete/Incorrect Installation Instructions

Fabricate & Install



Owner Receives Incomplete As-builts

So what's the Solution???

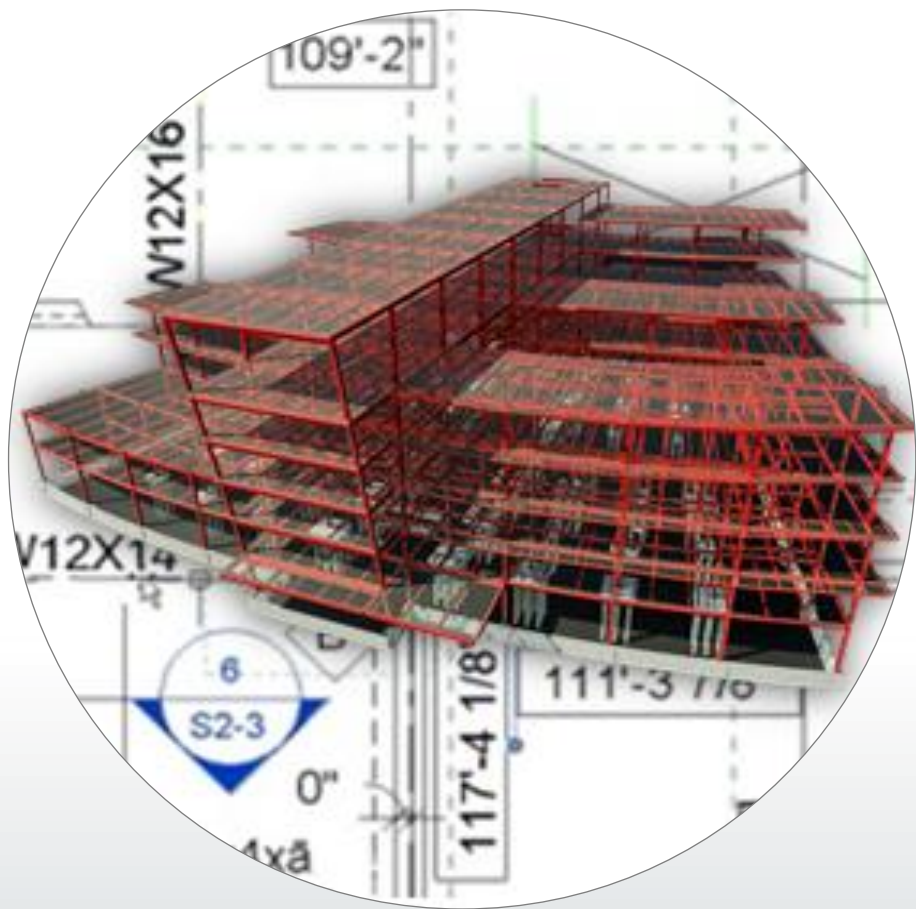


The Solution is... Connected BIM

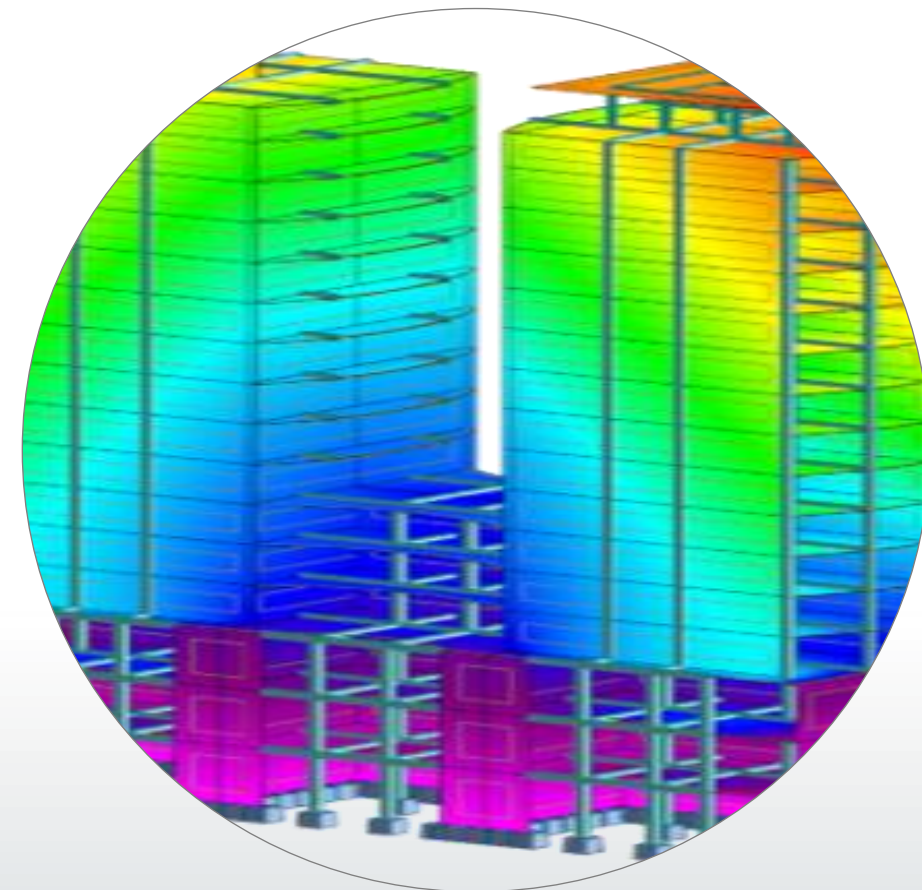
- A workflow in which we have a fully synchronized model from design to simulation to documentation to installation and erection
- Help reduce project complexity
- Interoperability to avoid errors and redundancies
- Result in improved productivity
- Better project coordination

Connected BIM

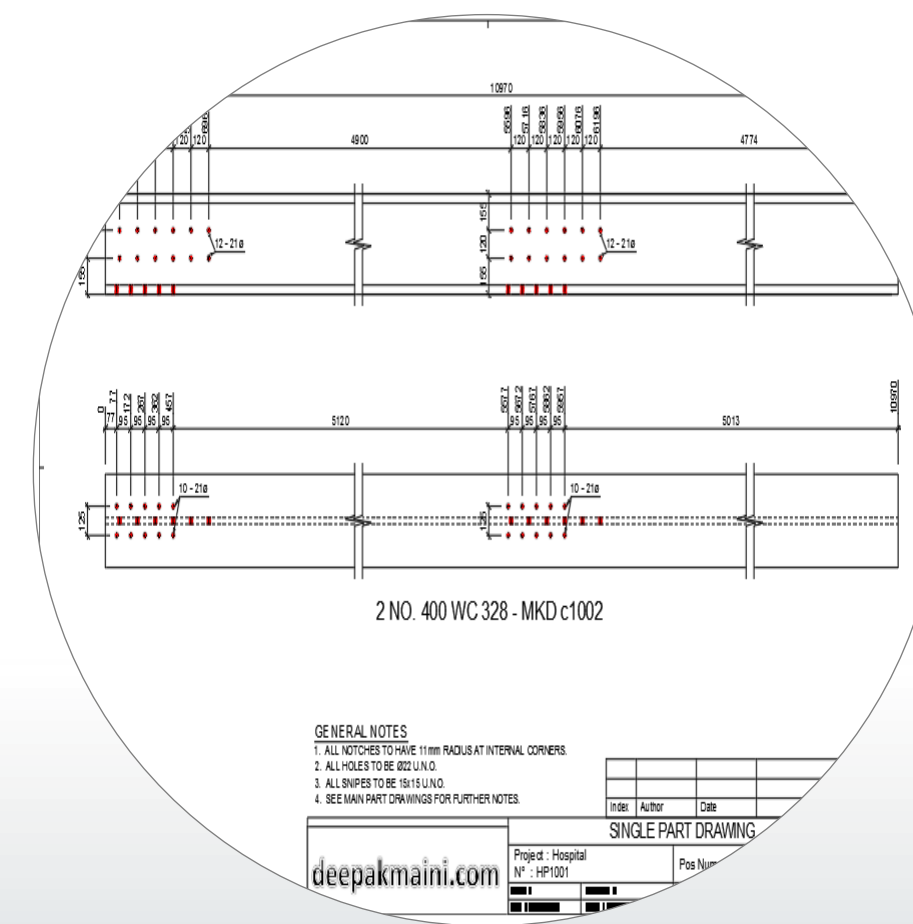
Structural Design



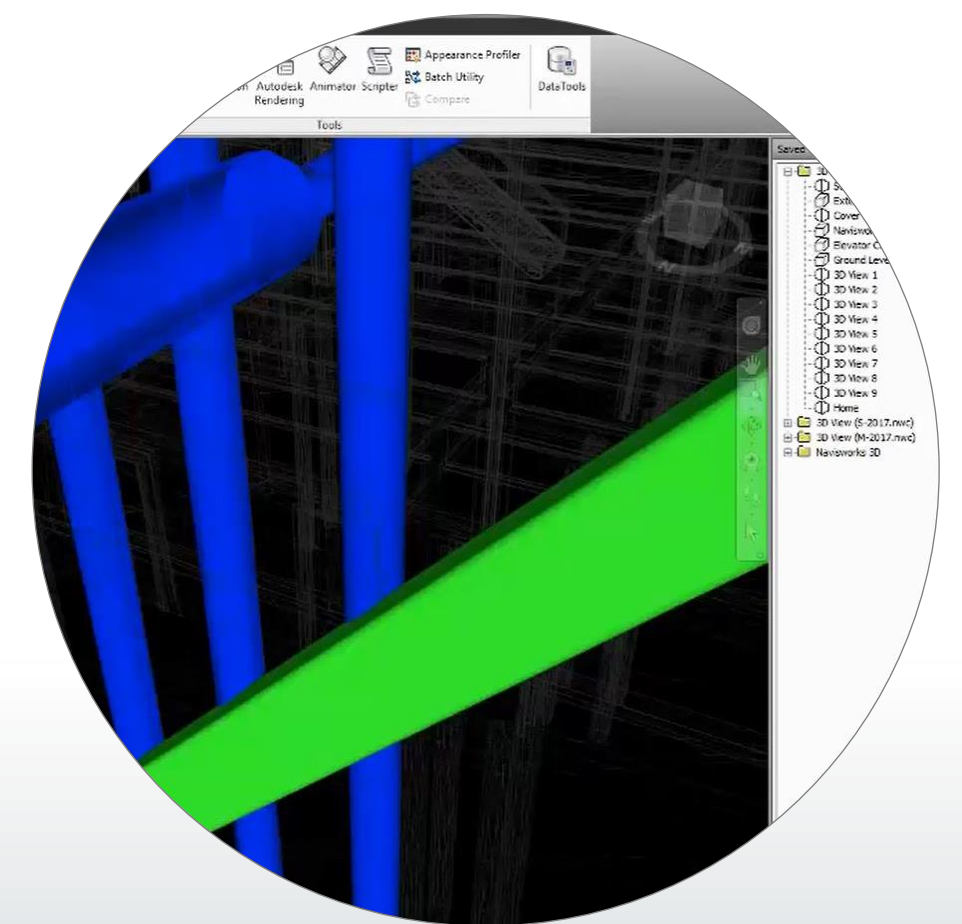
Simulation & Verification



Detail Documentation



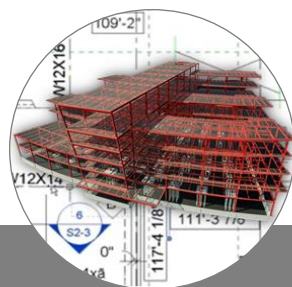
Fabricate & Install



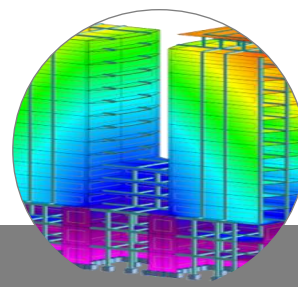
DESIGN

CONSTRUCTION

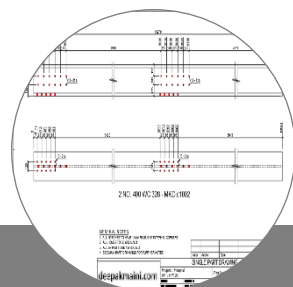
Connected BIM



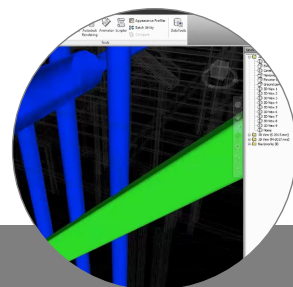
Structural Design



Analyze & Verify



Detail Documentation

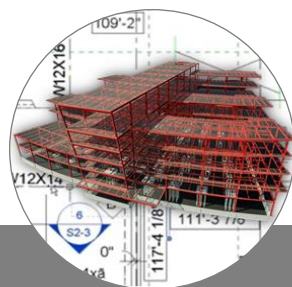


Fabricate & Install

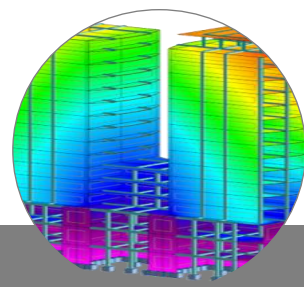


**AUTODESK ARCHITECTURE,
ENGINEERING & CONSTRUCTION
COLLECTION**

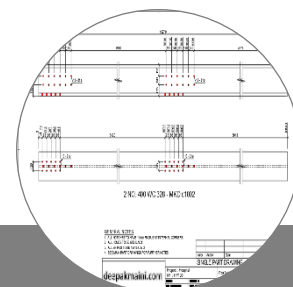
Connected BIM



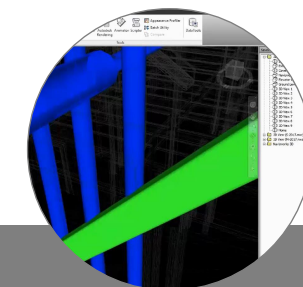
Structural Design



Analyze & Verify



Detail Documentation



Fabricate & Install

 AUTODESK®
REVIT®

 AUTODESK®
ADVANCE STEEL

 AUTODESK® ROBOT™
STRUCTURAL ANALYSIS
PROFESSIONAL

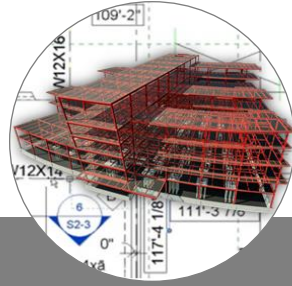
 AUTODESK®
NAVISWORKS®

 AUTODESK®
RECAP™

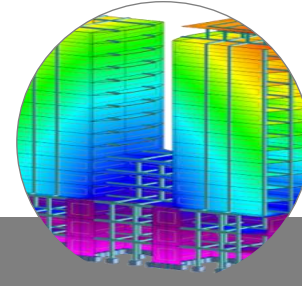
 AUTODESK® STRUCTURAL PRECAST
EXTENSION FOR REVIT®

 DYNAMO
FOR REVIT®

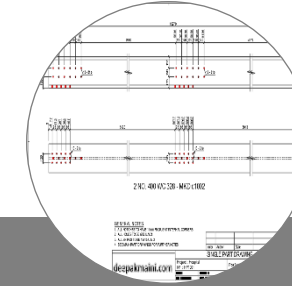
Connected BIM



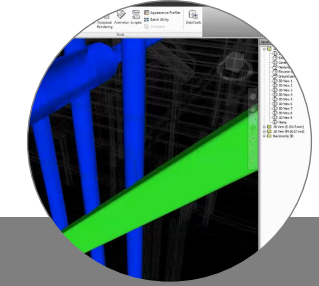
Structural Design



Analyze & Verify



Detail Documentation



Fabricate & Install



Paradigm Shift in the Structural Industry



Paradigm Shift in the Structural Industry

- Structural Engineers working on jobs requiring LOD 400 or above elements need to deliver fabrication level structural model.
- Especially, the projects in high seismic regions.







Paradigm Shift in the Structural Industry

- Structural Engineers working on jobs requiring LOD 400 or above elements need to deliver fabrication level structural model.
- Especially, the projects in high seismic regions.
- Historically, only the structural detailers working under the fabricators were capable of working on the fabrication level model.
- Now Structural Engineers are starting to deliver models with LOD 400 elements.





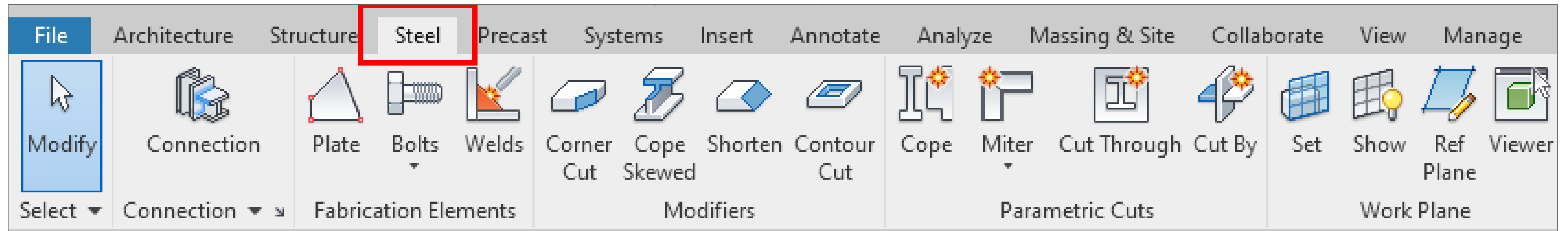
Paradigm Shift in the Structural Industry

- Structural Engineers working on jobs requiring LOD 400 or above elements need to deliver fabrication level structural model.
- Especially, the projects in high seismic regions.
- Historically, only the structural detailers working under the fabricators were capable of working on the fabrication level model.
- Now Structural Engineers are starting to deliver models with LOD 400 elements.
- Autodesk Revit allows you to create steel connections inside Revit. Alternatively, you can import the structural connections from Advance Steel straight into Autodesk Revit.

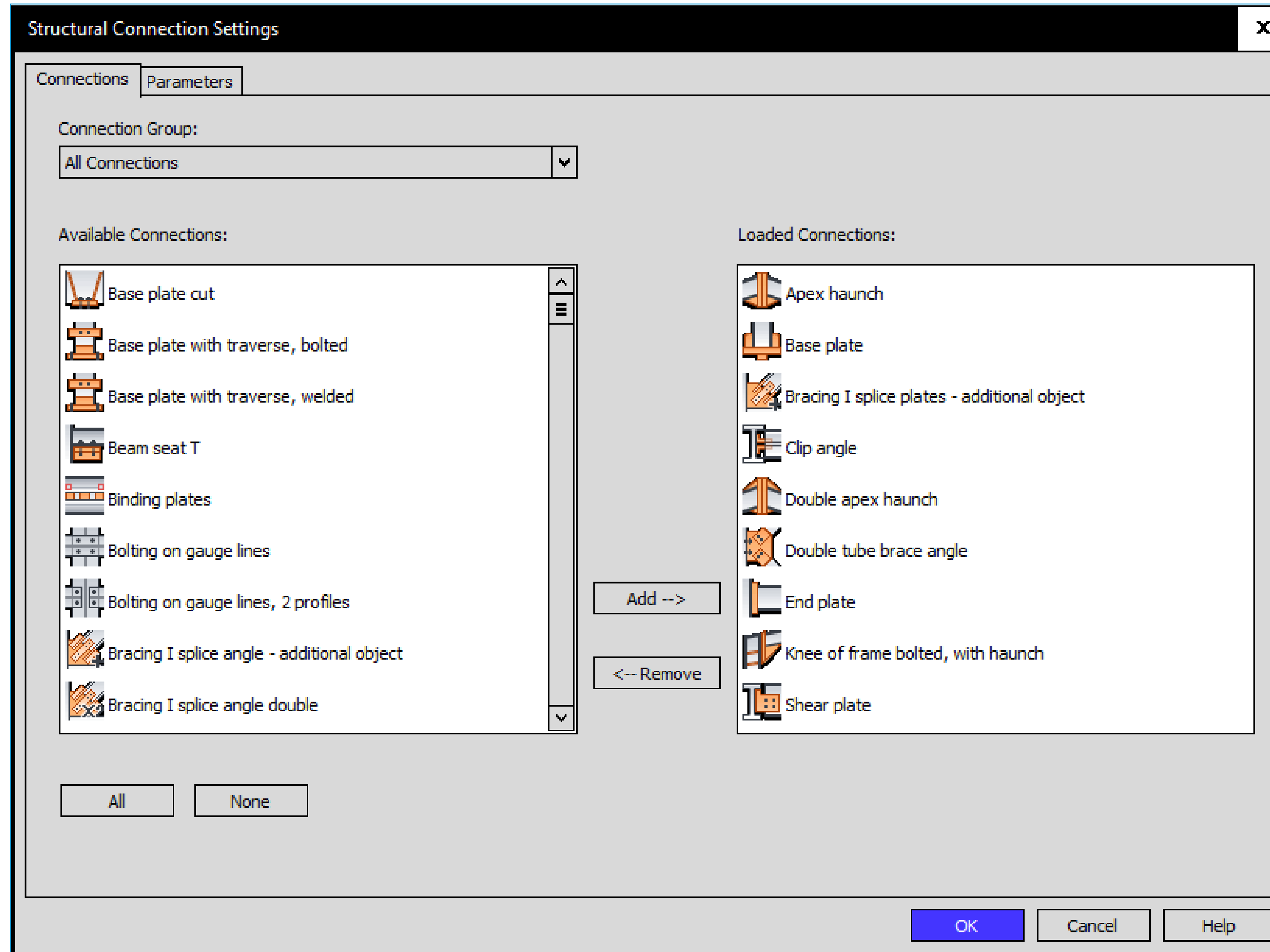
Autodesk AEC Collection Empowering the Structural Industry



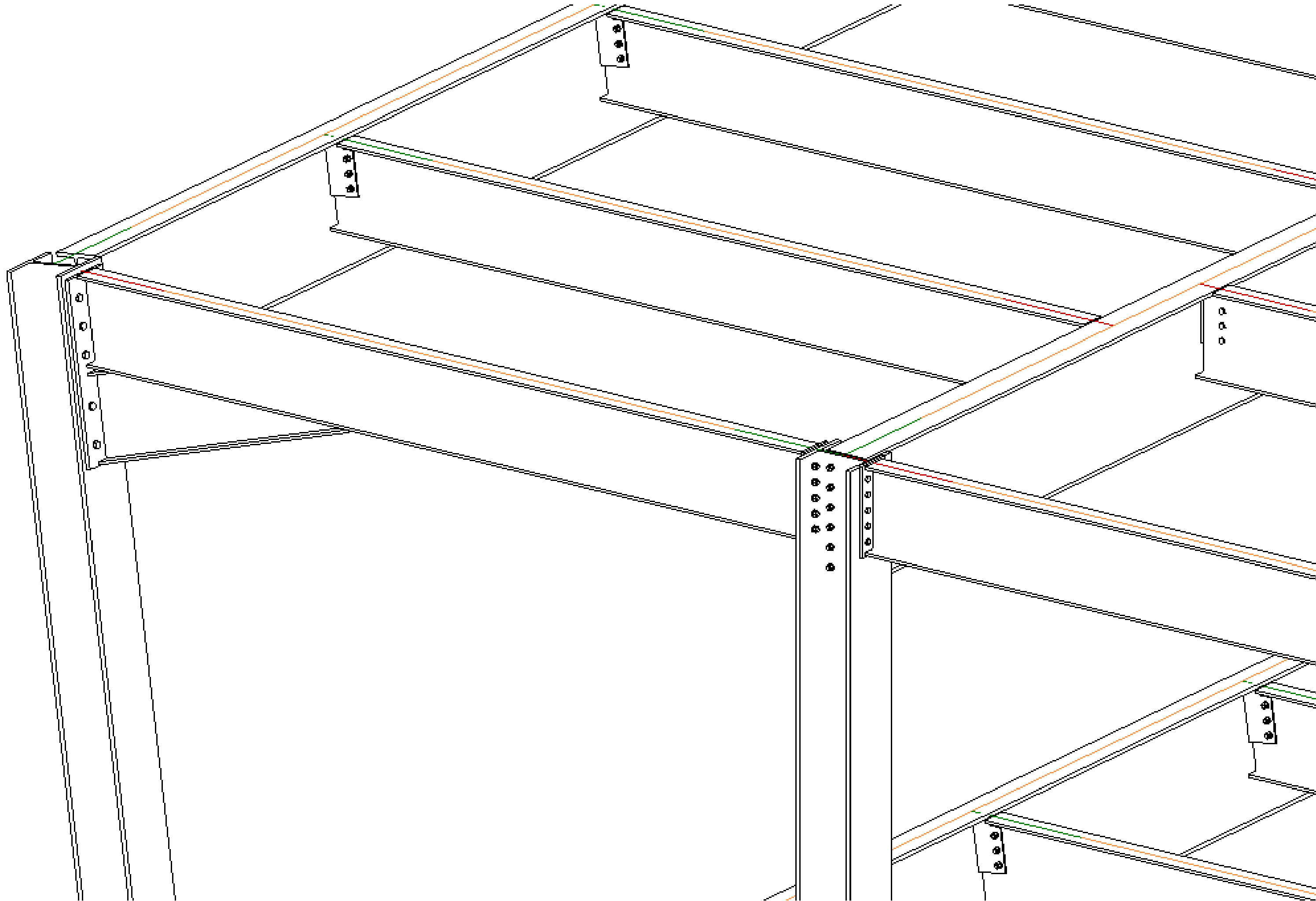
Steel Tab for Structural Connection, Elements, and Features



Structural Steel Connections for Autodesk Revit 2021



Structural Steel Connections for Autodesk Revit 2021



Live Demo

Inserting Structural Connections in Revit

Leveraging Autodesk Revit Model (BIM Data)

for Steel Detailing and Structural Analysis

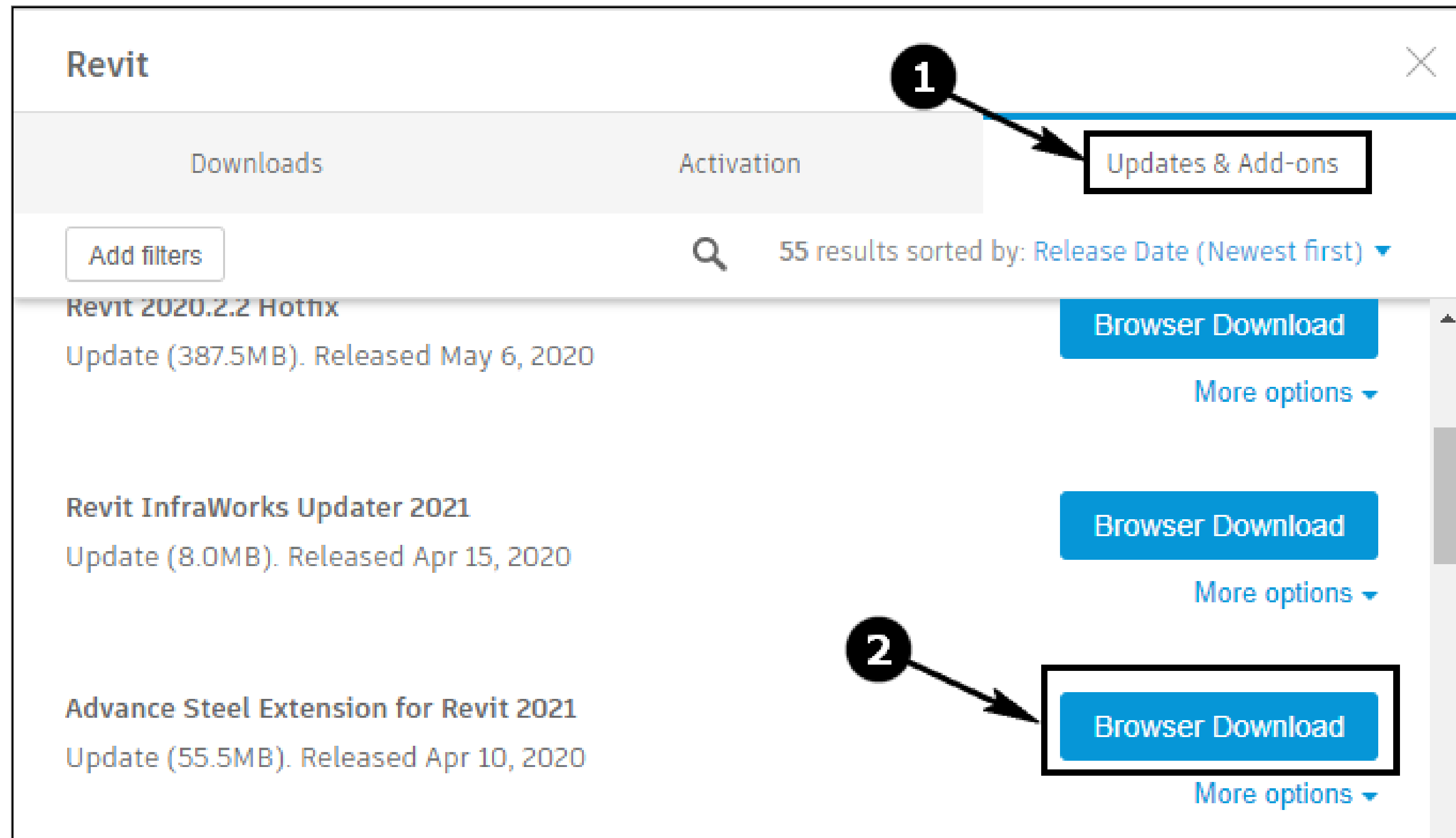
Autodesk Advance Steel

Advance Steel is a software specifically designed for structural engineers and steel detailers who need an easy-to use steel detailing application.

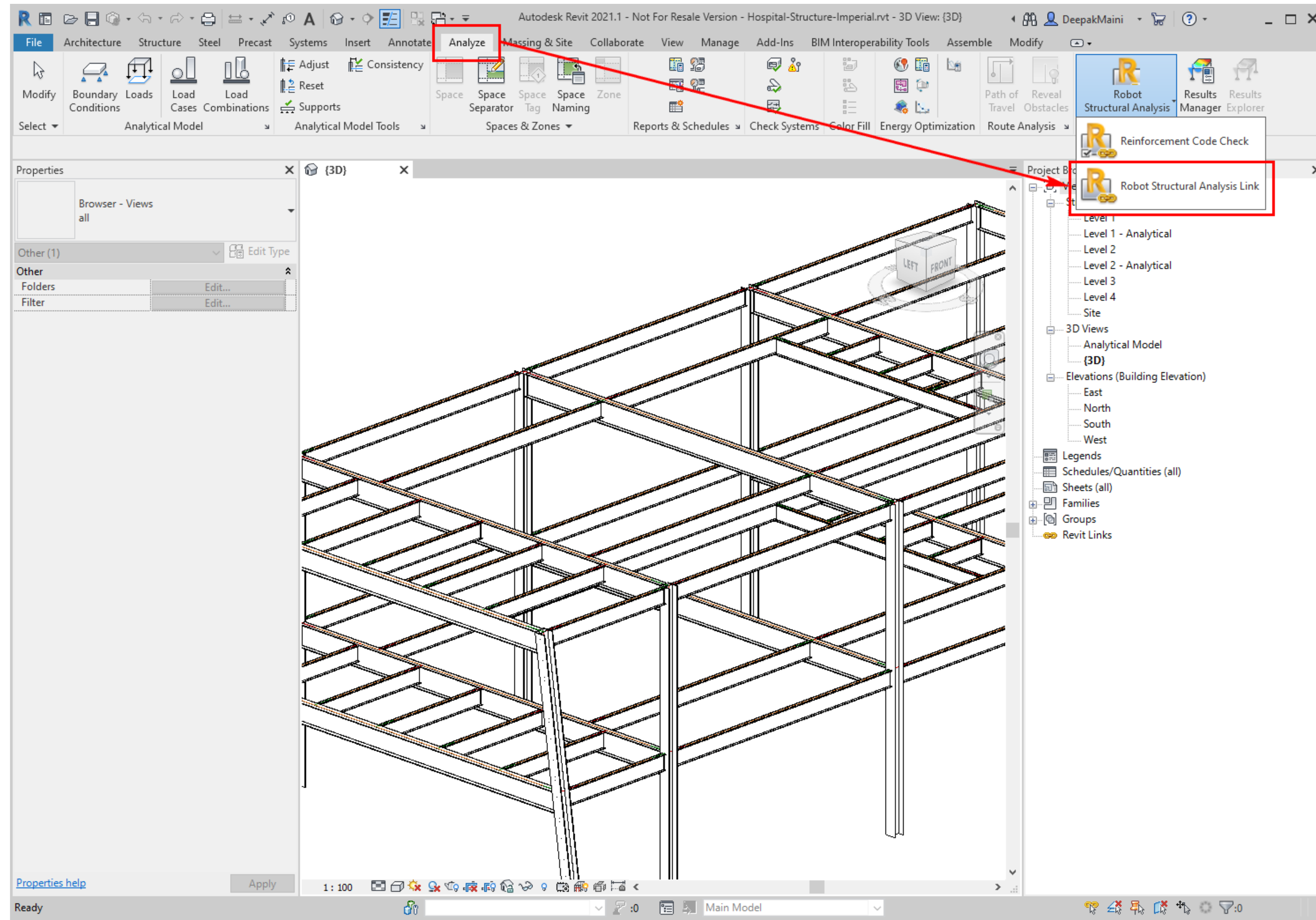
- Allows Bi-directional data interoperability with Autodesk Revit
- Automates the creation of complex structural models and connections that would be too tedious to manually model
- Increases productivity during the creation of detail documentation, fabrication drawings, bills of material (BOMs), and NC files

Advance Steel Add-In for Autodesk Revit

One of your Autodesk Subscription Benefits



Robot Structural Analysis link with Autodesk Revit



Live Demo

*Leveraging Autodesk Revit Model (BIM Data) for
Steel Detailing and Structural Analysis*

My Aim: Have Lots of Fun as we Learn





Autodesk and the Autodesk logo are registered trademarks or trademarks of Autodesk, Inc., and/or its subsidiaries and/or affiliates in the USA and/or other countries. All other brand names, product names, or trademarks belong to their respective holders. Autodesk reserves the right to alter product and services offerings, and specifications and pricing at any time without notice, and is not responsible for typographical or graphical errors that may appear in this document.

© 2020 Autodesk. All rights reserved.