

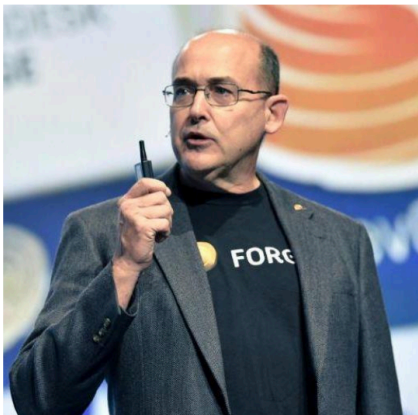
Forge Platform

10 Cutting Edge Forge code samples

Jim Quanci

Cyrille Fauvel





Jim Quanci
Sr Director, Autodesk

Always positive and proactive embracer of new technologies – a builder of ecosystems that leverage the creativity and innovation of great people. Increasing the reach of the company by an order of magnitude to accelerate the design and creation of a more sustainable, humane and equitable world

Committed to making the company a great place to work and a success while also "making a difference" in the world we live in



Cyrille Fauvel
Developer Advocate
Autodesk

Cyrille got his first computer when he was 12 years old, and as he had no money left to buy software, he started writing code in assembly code. A few years later, he wrote code in Basic, Pascal, C, C++, and so on, and he's still doing that. He's been with Autodesk, Inc., since 1993, joining the company to work on AutoCAD software originally. He's passionate about technology and computers. At Autodesk he's worked in various roles, from the design side to manufacturing and finally to games and films. He is now an evangelist for the Forge API application programming interface and web services, and he has a desire to deliver the most effective creative solutions to partners using these APIs and web services.

Blog: <https://forge.autodesk.com.blog>

Samples & Demos: <https://github.com/Autodesk-Forge?tabs=repositories>



Giro Controls		
MainAxis	<input type="range"/>	0
SecondAxis	<input type="range"/>	0
ThirdAxis	<input type="range"/>	0
reset		
Close Controls		



What Customers and Partners Build



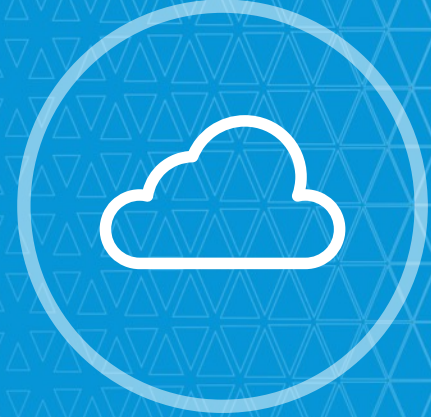
**Data Visualization &
Analysis**



Digital Twin



Augmented & Virtual Reality



SaaS Integration



Catalogs



Configurators



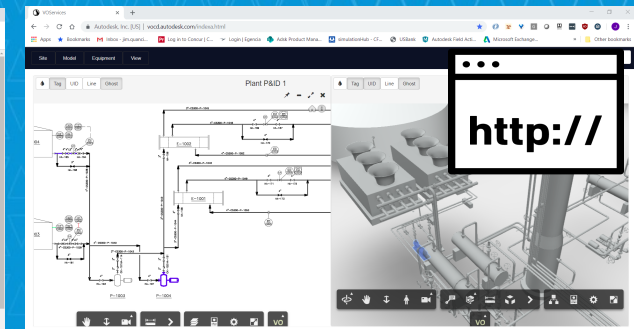
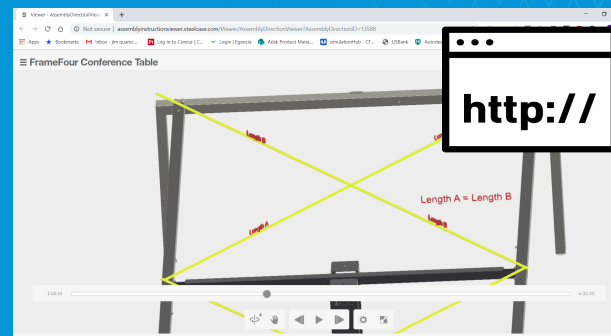
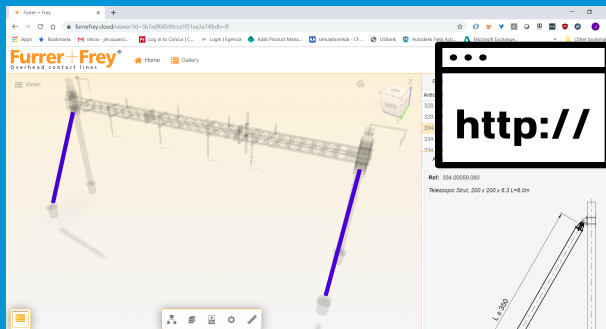
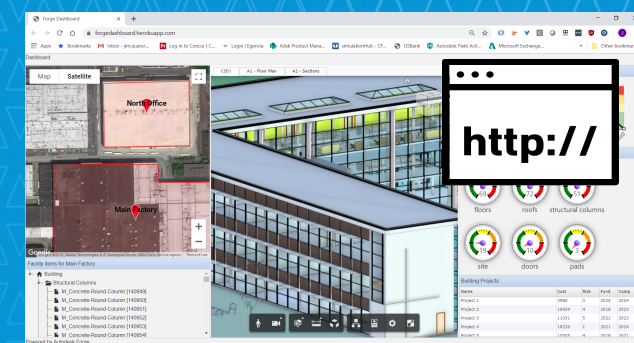
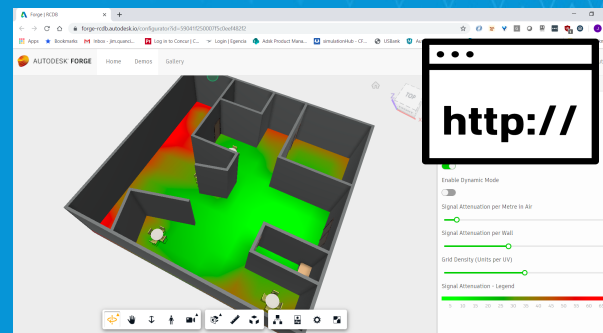
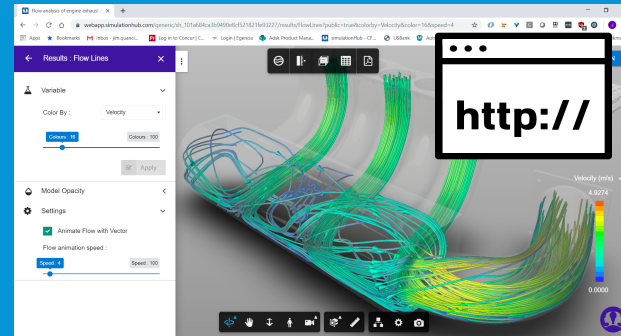
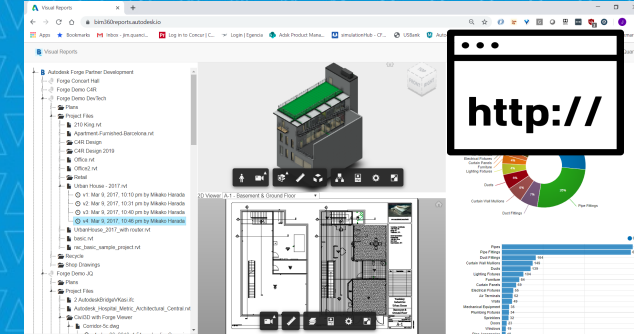
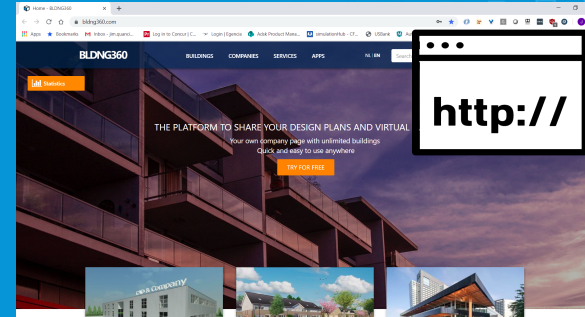
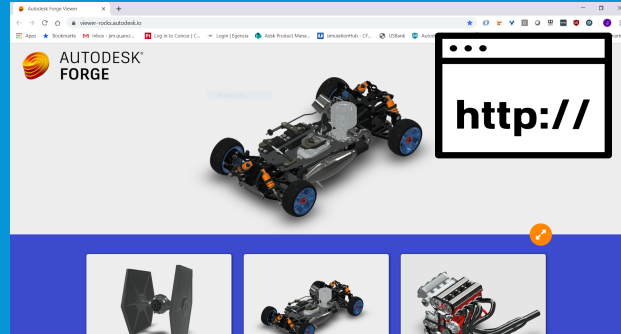
Design Automation



Photo to 3D

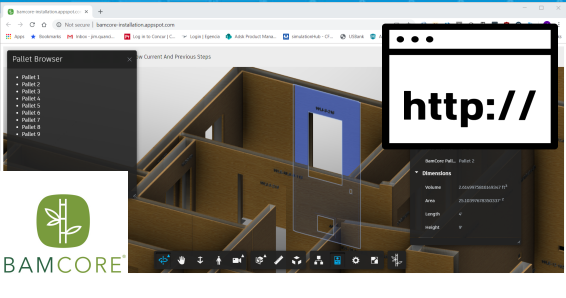
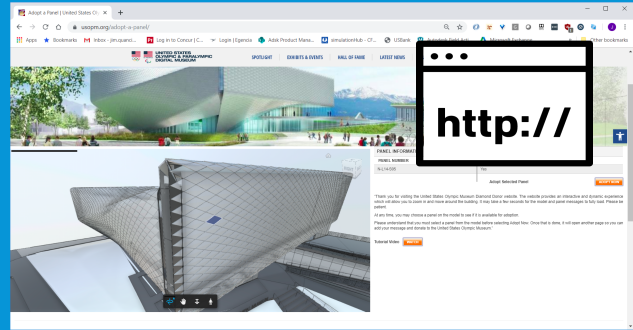
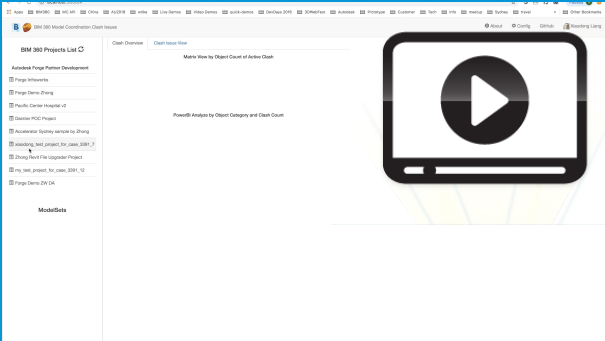
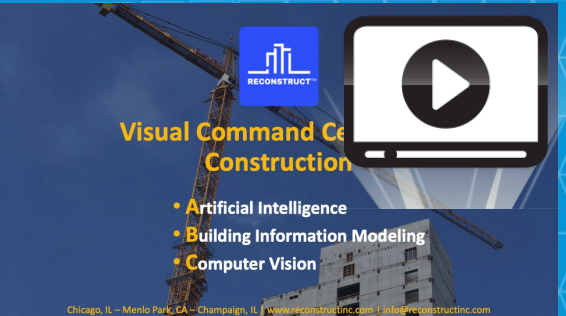
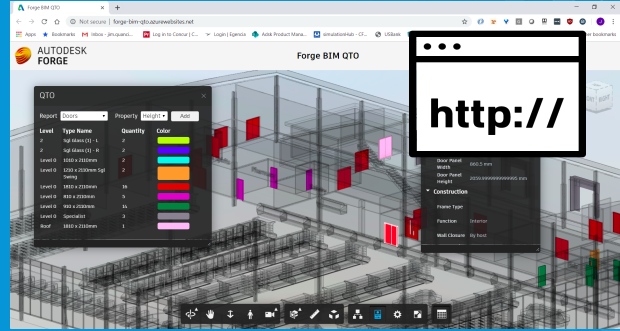
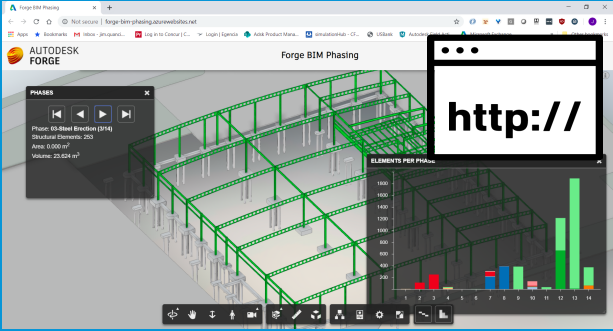
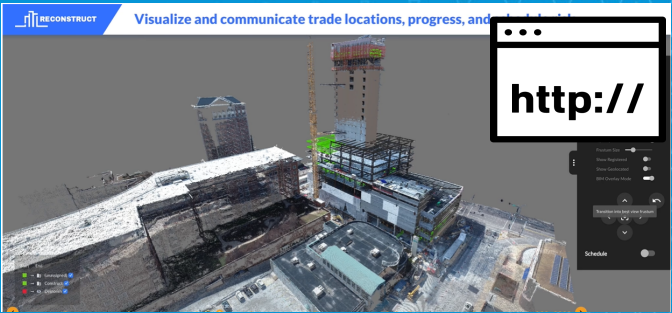
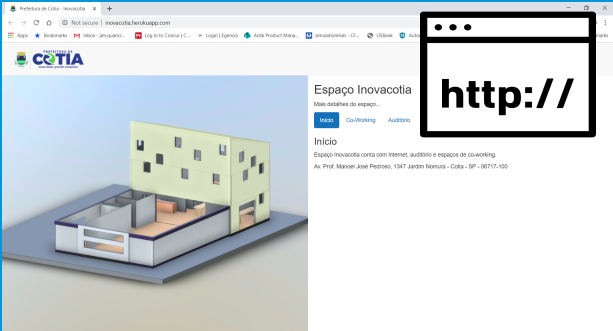


Data Visualization & Analysis





Data Visualization & Analysis





**Data Visualization &
Analysis**



Automate





Digital Twin





MOICON

Home View

Forge

⚙️



Analytics

Process Analysis

Animations

Transform

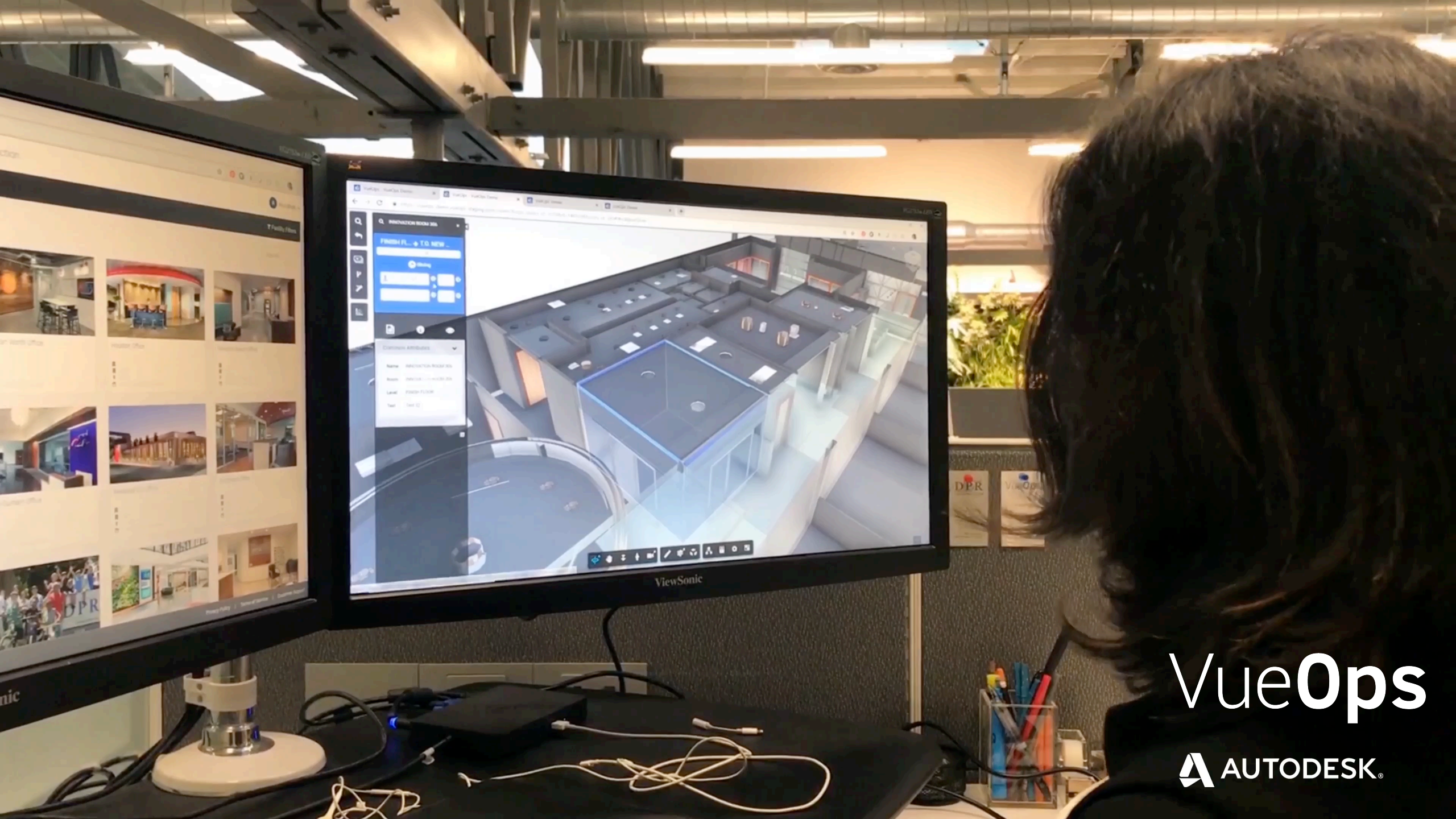
Streamline



Digital Twin



VueOps

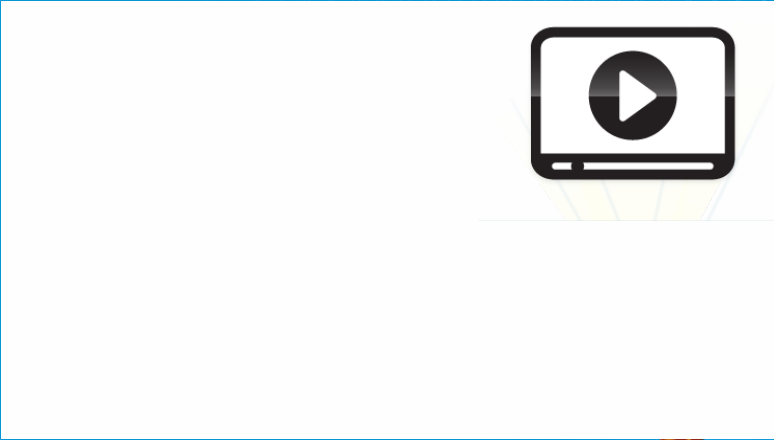
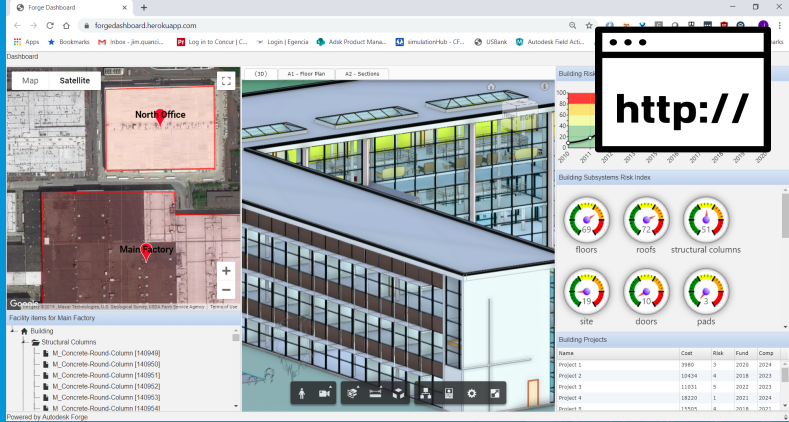
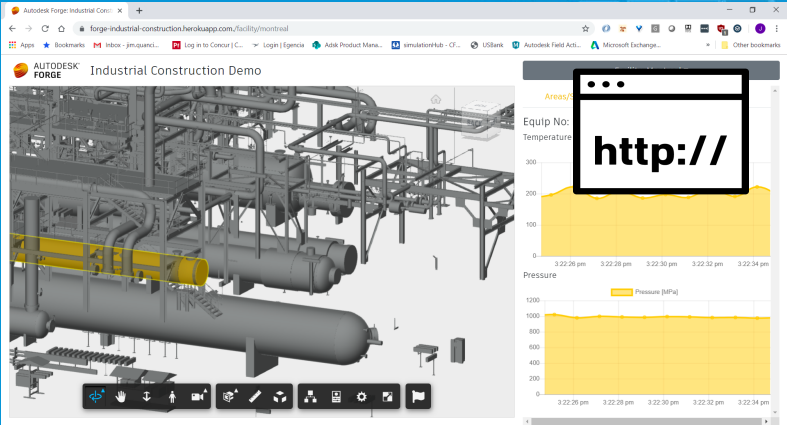
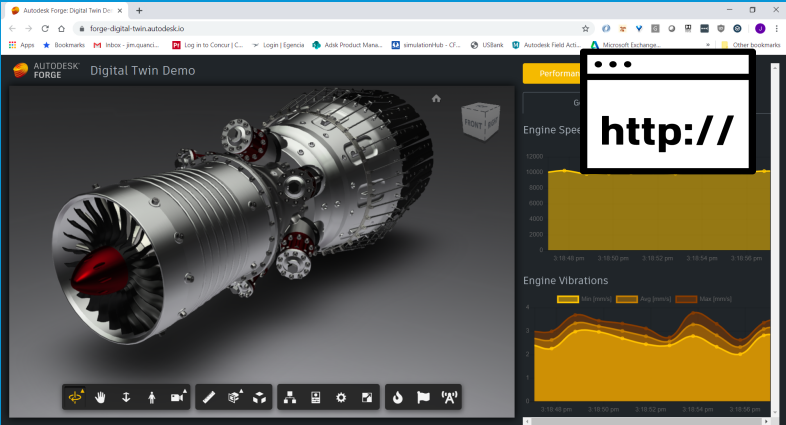


VueOps

 AUTODESK®

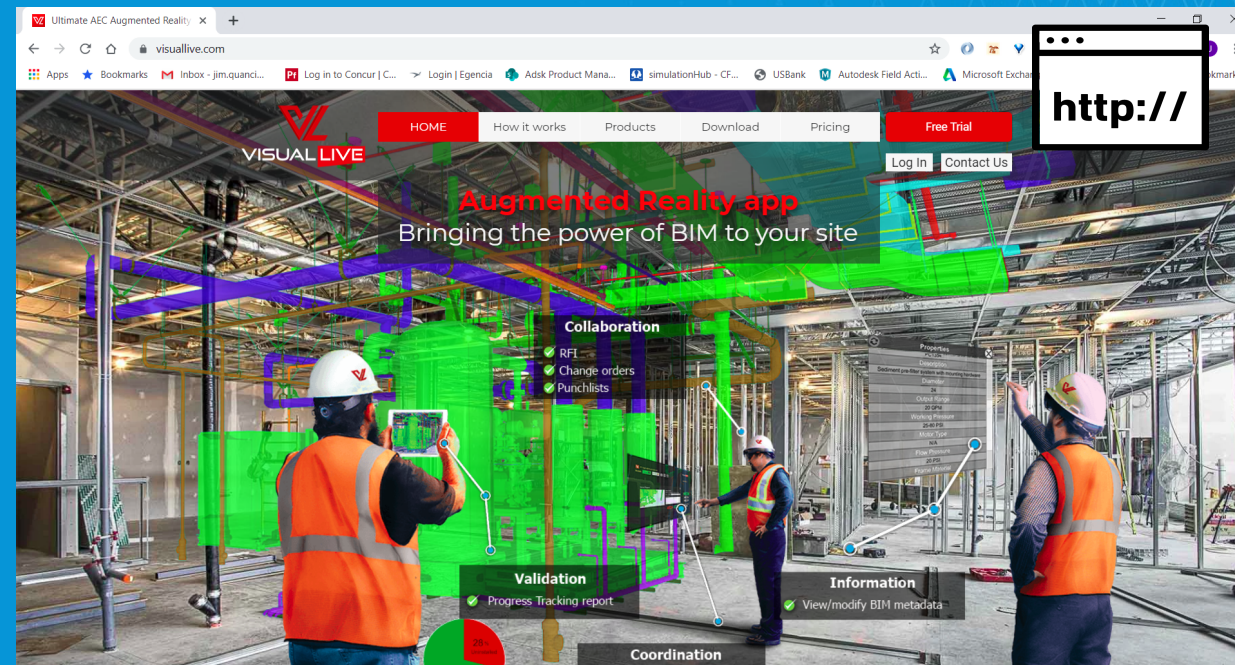


Digital Twin



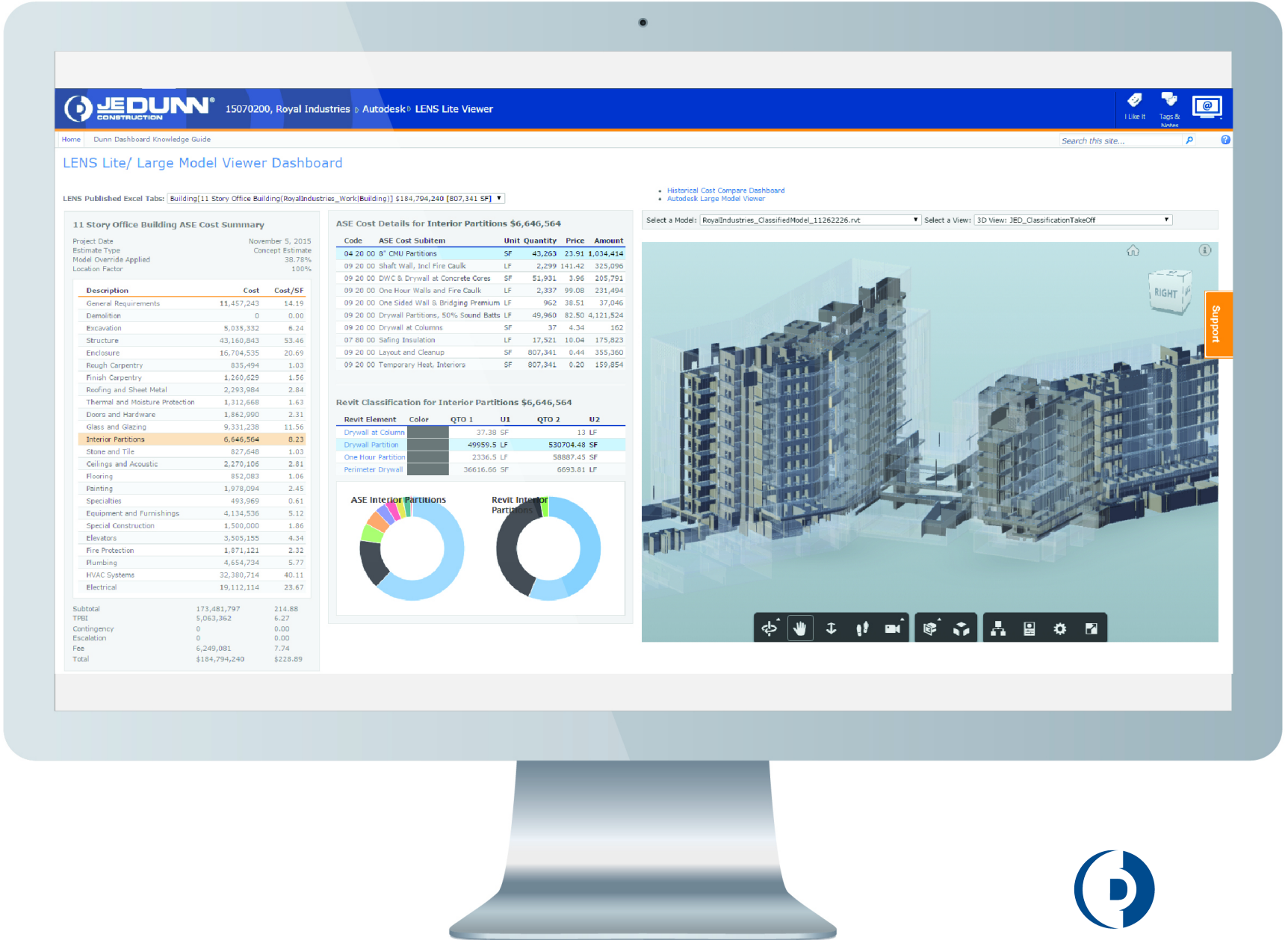


Augmented & Virtual Reality



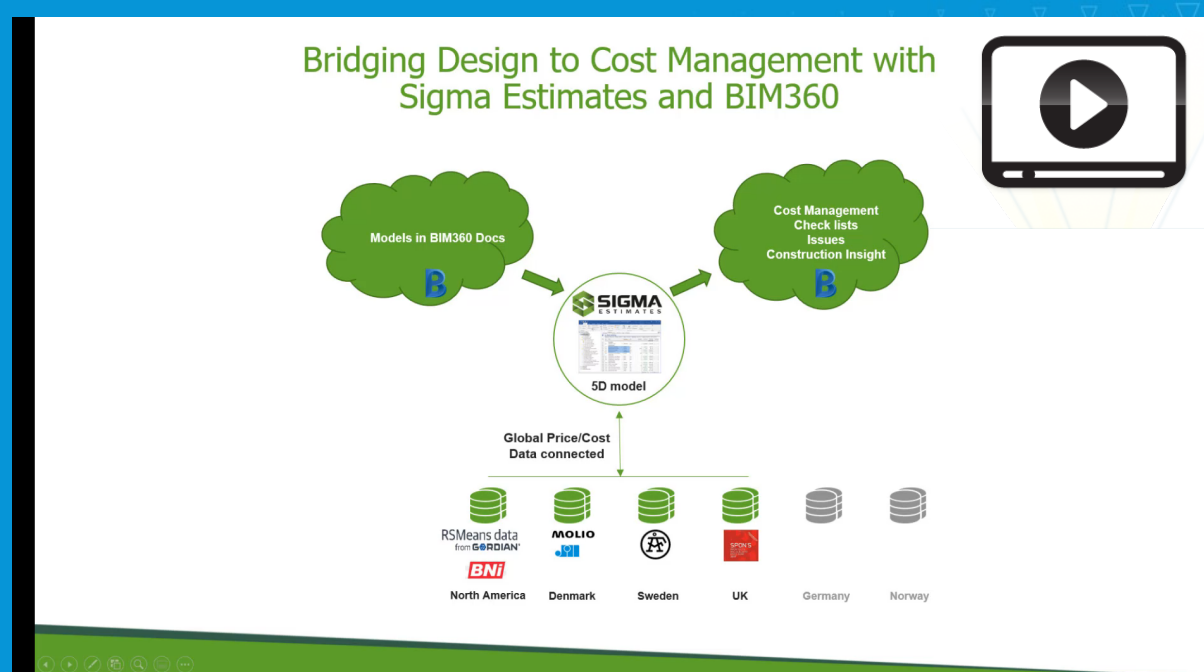


SaaS Integration





SaaS Integration



Bringing SharePoint and BIM 360 Together

AUTODESK UNIVERSITY

Search AU Library

Discover Conferences

LAS VEGAS 2018 BIM 360 SOFTWARE SOFTWARE DEVELOPMENT

INSTRUCTIONAL DEMO CS225223

Bringing SharePoint and BIM 360 Together

Shaili Modi

Share Comment Bookmark Recommend (1) Follow

Loading search...

Description

In this workshop, we will review the path and journey from Microsoft .NET to the Forge platform, and the tools and techniques that were used in the development of



SaaS Integration

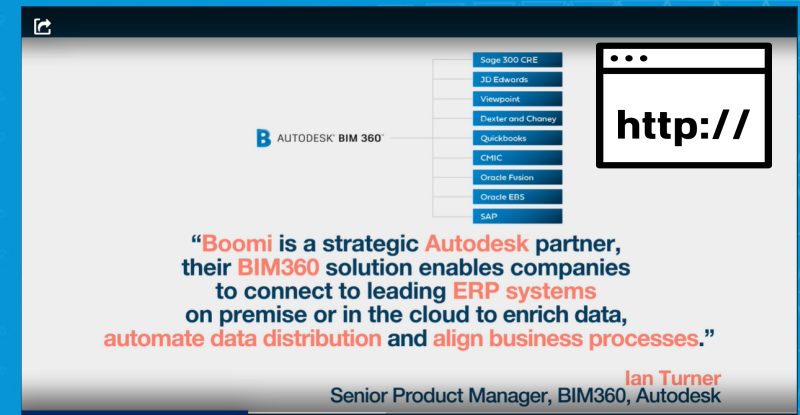
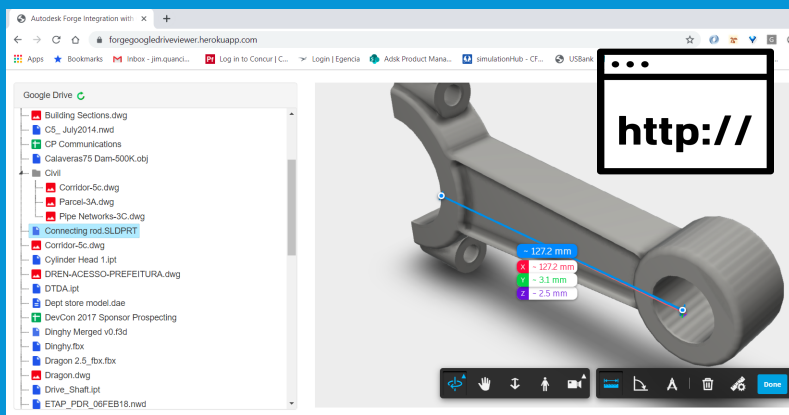
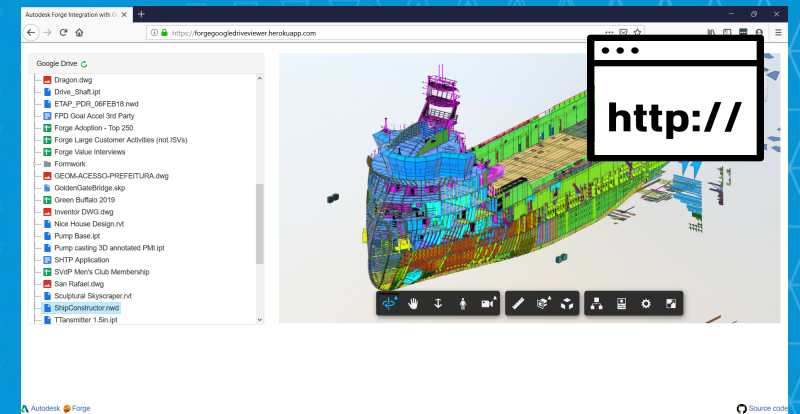
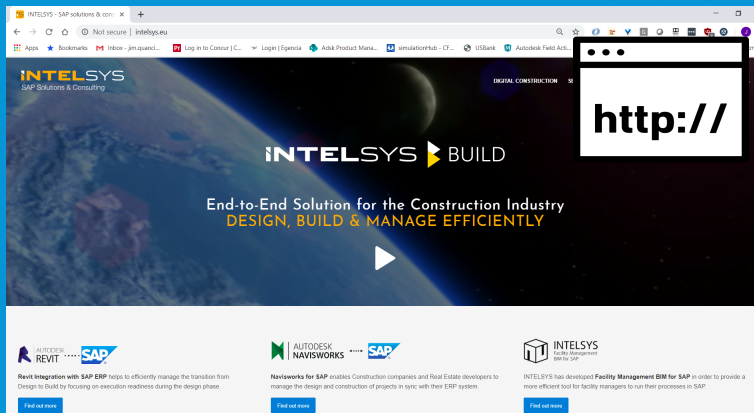
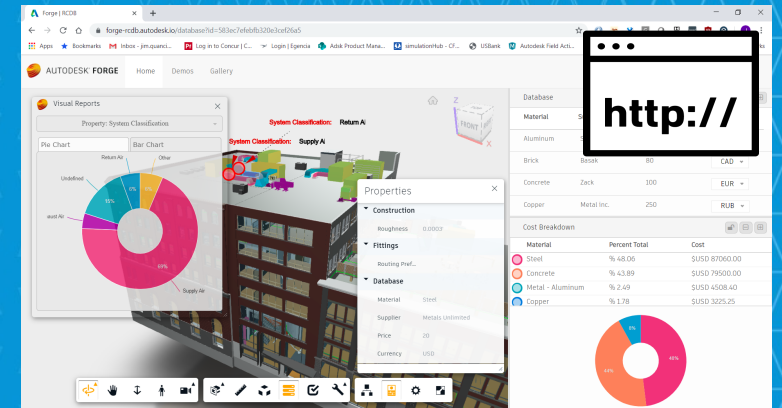
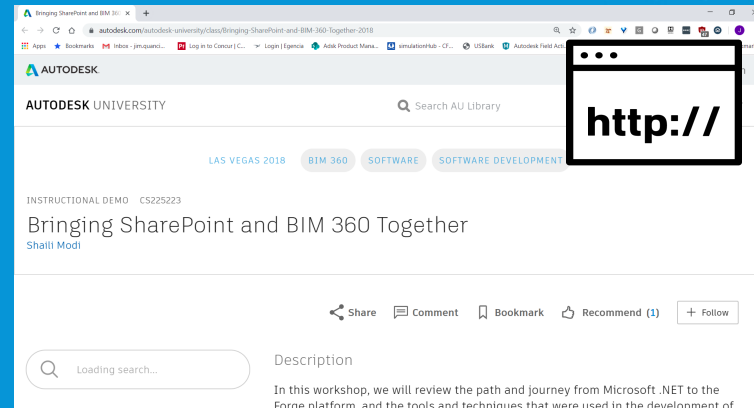


eSUB
construction software





SaaS Integration





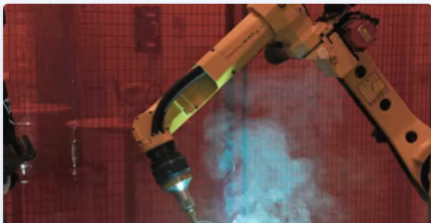
Catalogs

CADshare PRODUCTS ORDERS


BASKET 8 SIGN OUT

All Products Welding Equipment 2 Light Vehicles 1 Construction Equipment 1 Plant & Process 1


Select a product to order a part:




Arc Welder
7567-7833 Viewables: 1



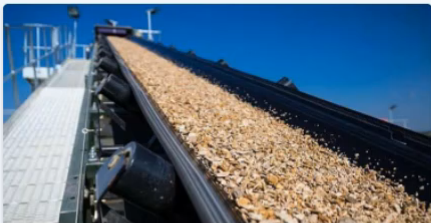
Combi Snow Plough & Brush Attachment
3434-8983 Viewables: 1



Site Dumper
N/A Viewables: 1

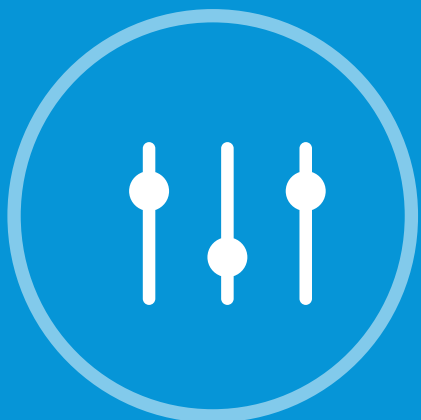


Robotic Arc Welder
3634-9794 Viewables: 1



Product Conveyor
SP757 Viewables: 1

Powered by **CADshare**

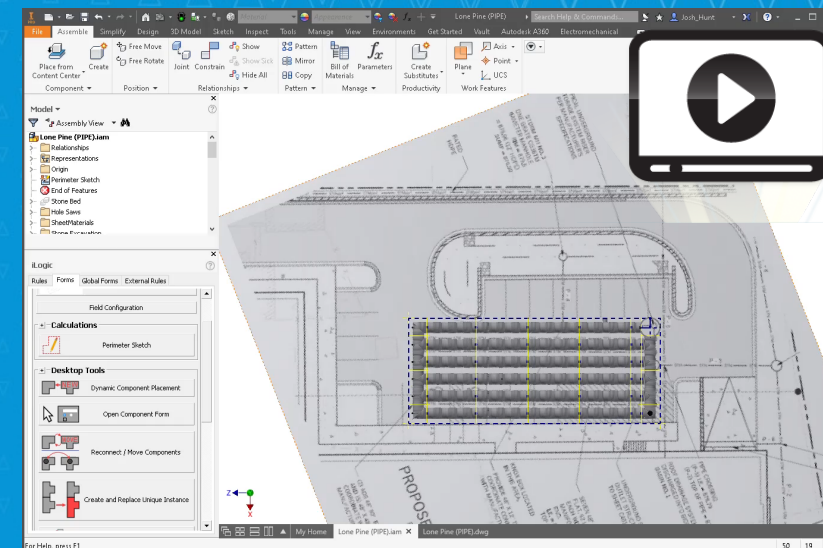
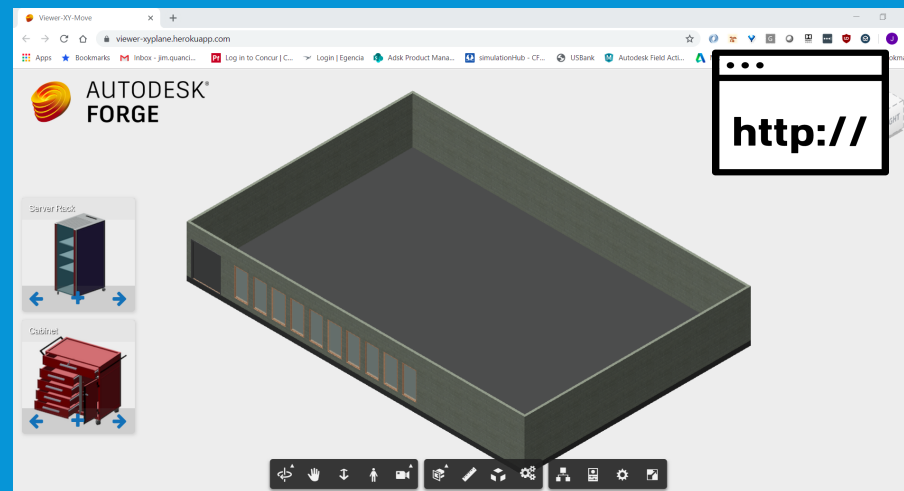
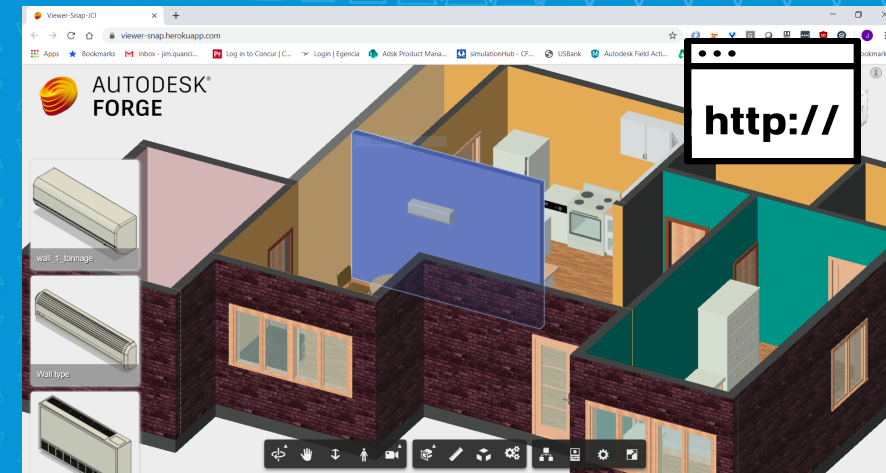
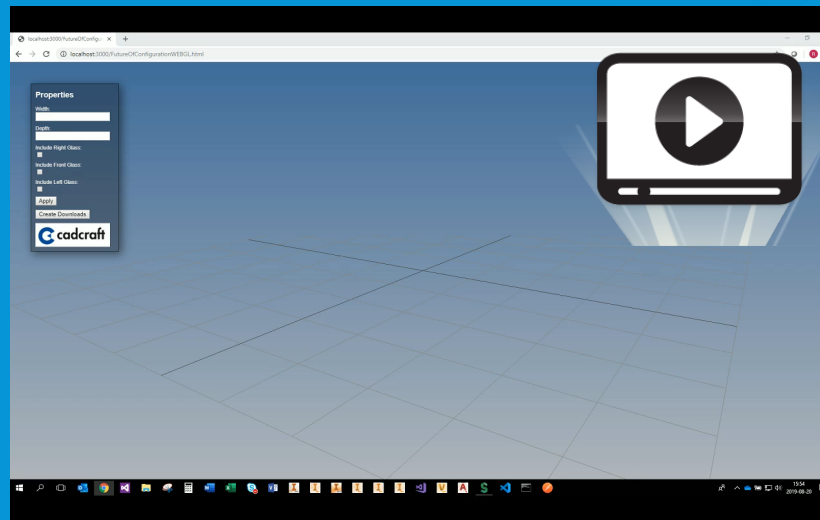


Configurators



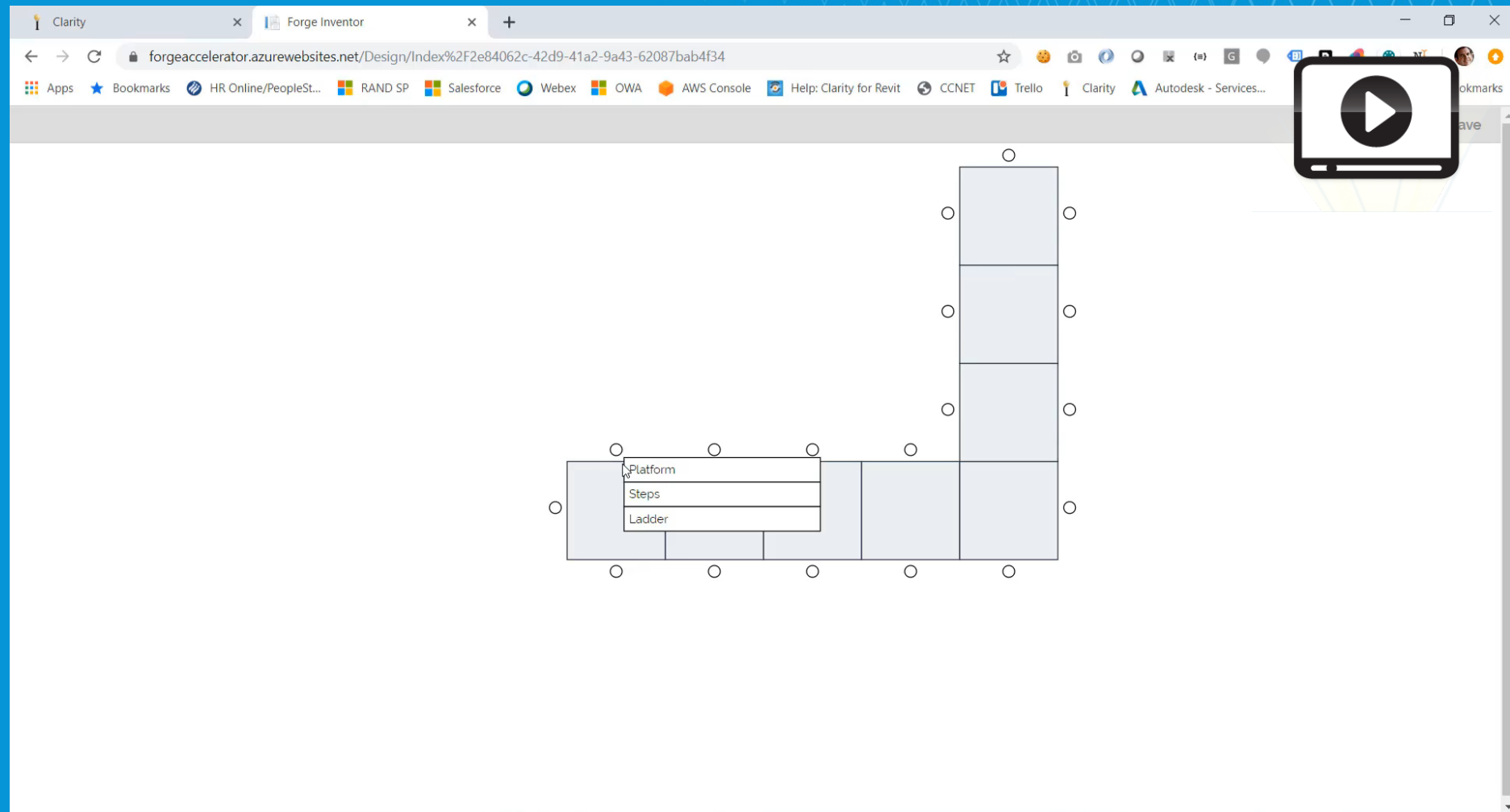


Configurators



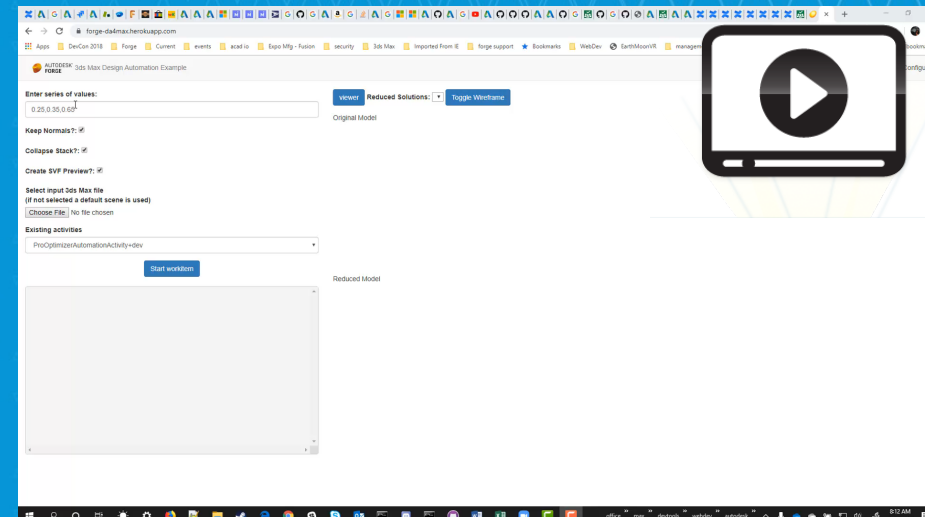
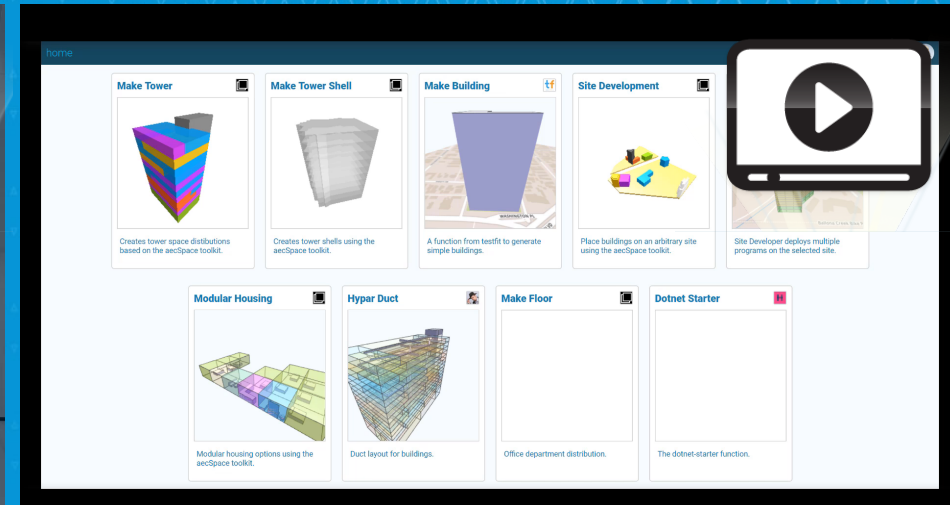
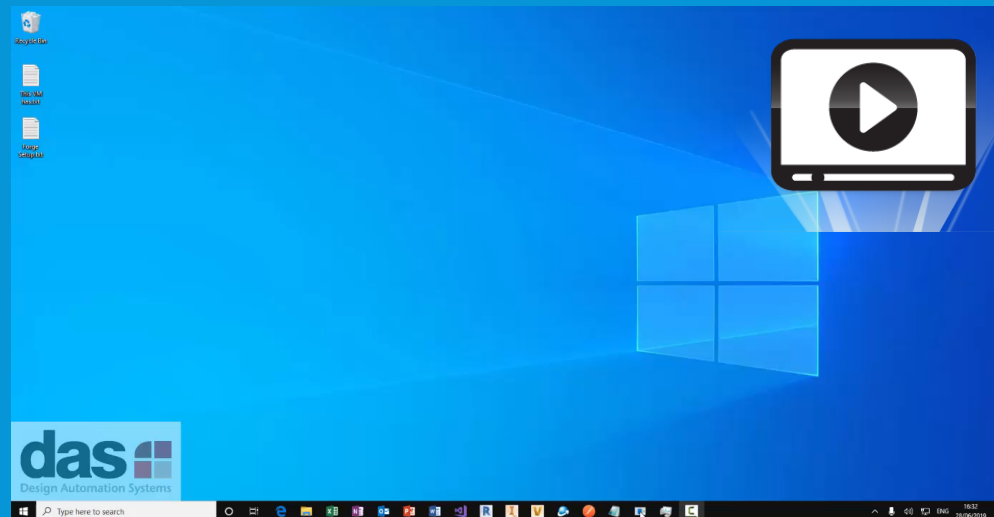


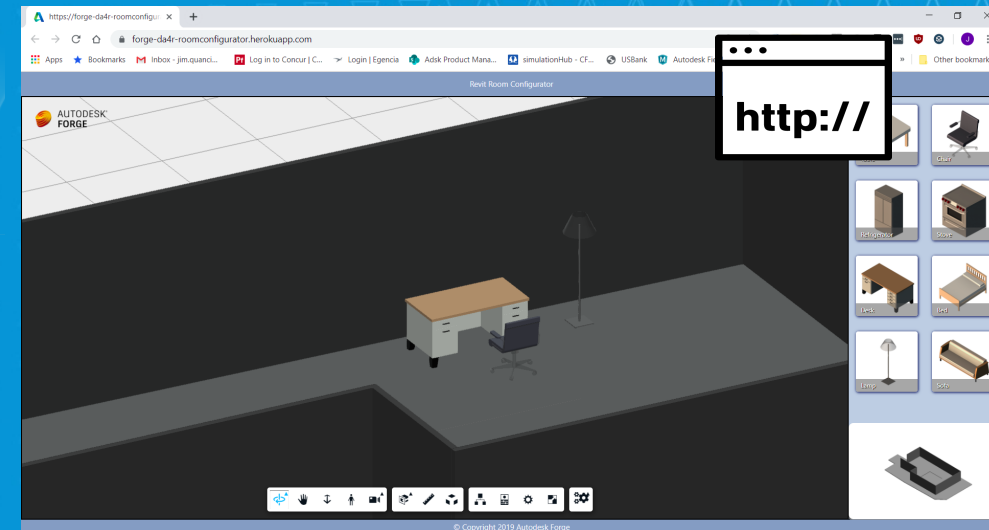
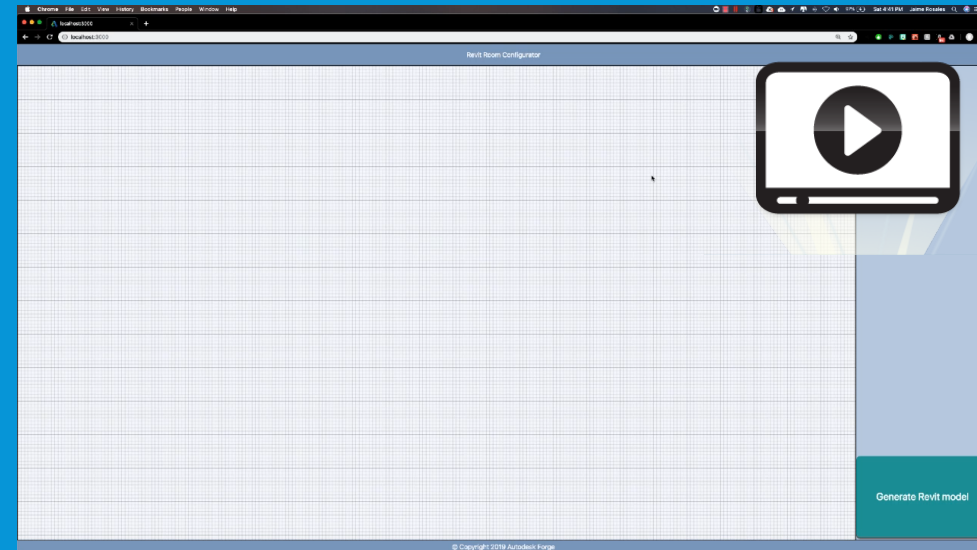
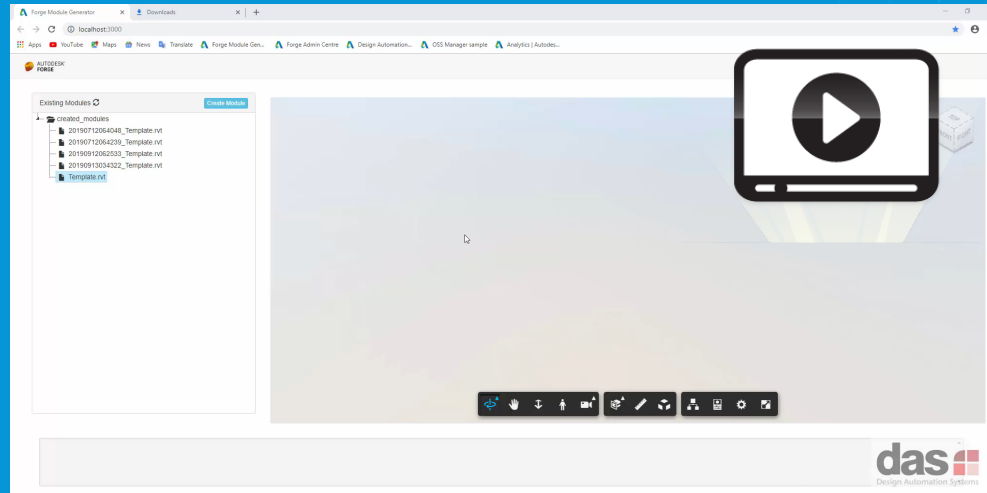
Configurators





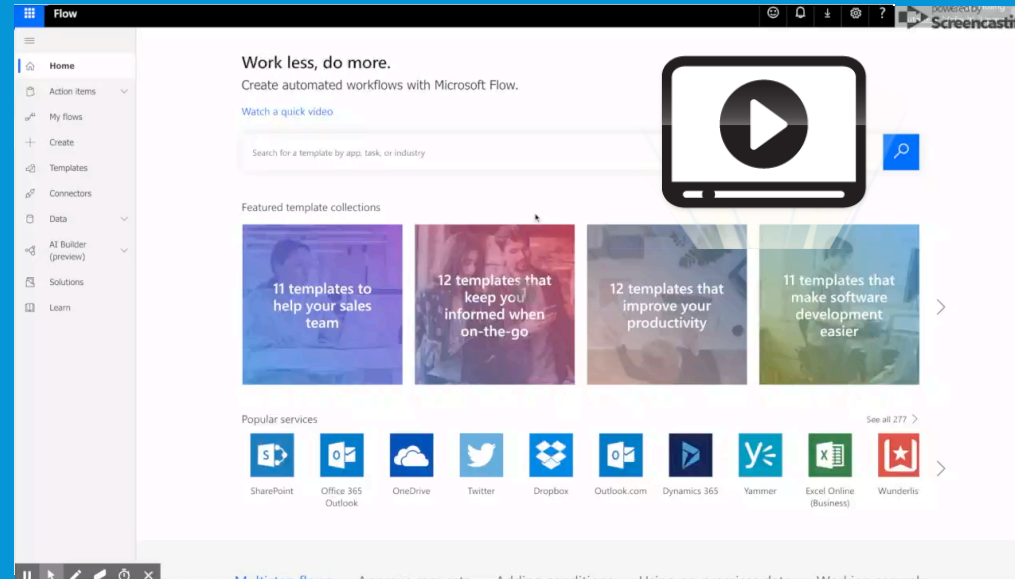
Automate



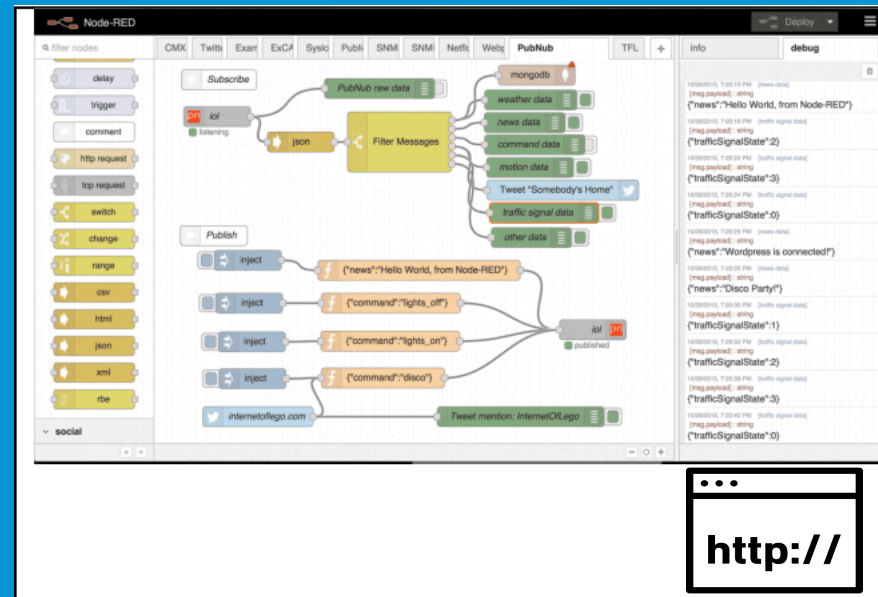


Automate

Microsoft Flow



Node-RED



Automate

http://

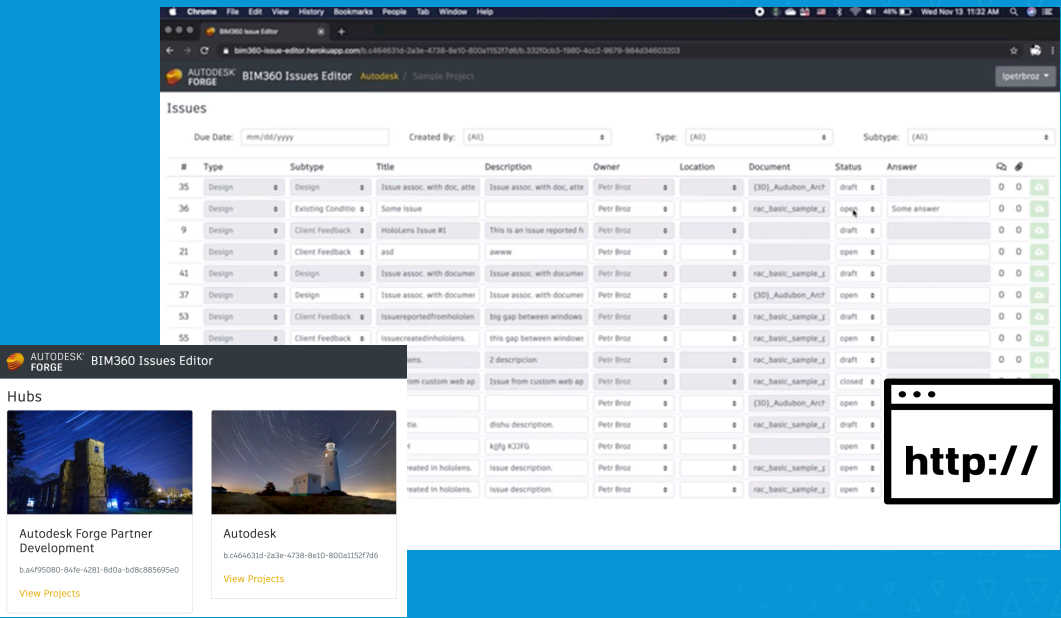
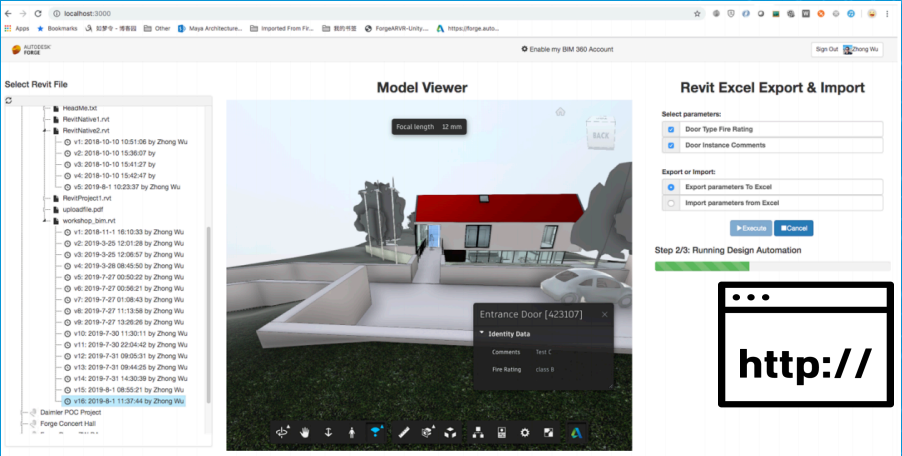
http://



Automate

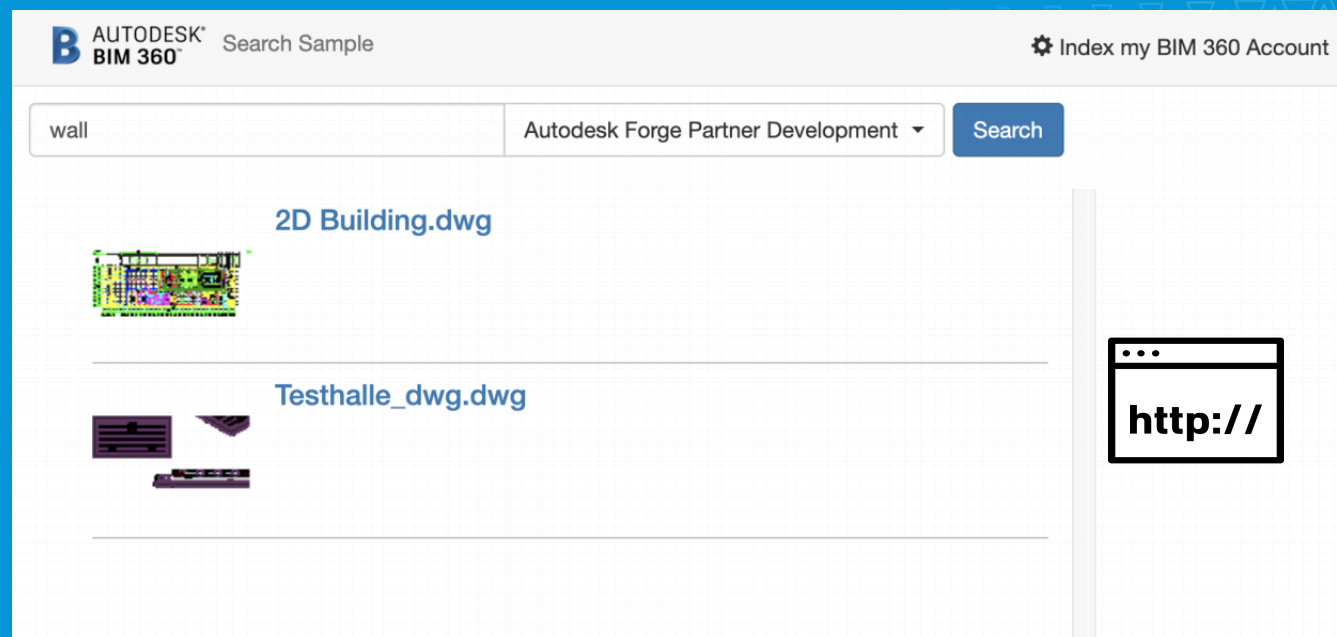


SaaS Integration





SaaS Integration





Automate

Contact Us: (888) 892-2694
Email: ADSDesignTool@ads-pipe.com

Manage Projects

Save Current Project

Email Drawing & Reports

Print Pipe Specifications

Design Tool 2.0 Instructional Video

Stormtech

ADS

Sign Out

75%

Enable Panning Tool

Project information

Background & Tools

System parameters

Advanced settings

Drawings & Reports

Contact Us

Import background image

Background:

Import PDF

Move/Rotate

Show/Hide

Scaling: ?

Set Scale

Enter Measure Length: 20 ft

Volume (cf)

System length (ft)

Length outside fittings (ft)

Length between fittings (ft)

Length fittings on center (ft)

System width (ft)

Area (sf)

Number of rows

94.81

23.22

21.88

18.56

20.68

11

255.5

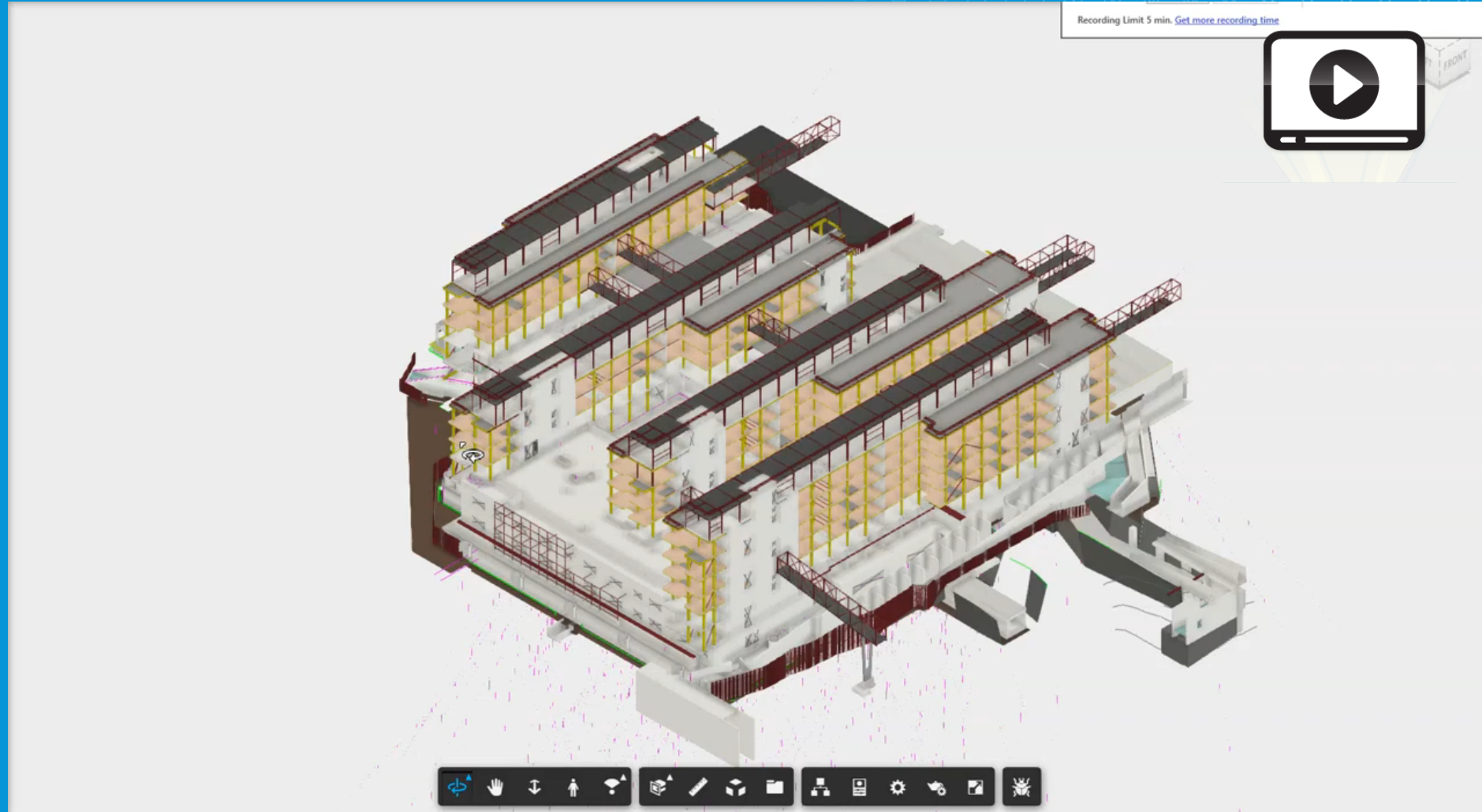
5

<





Data Visualization & Analysis





Data Visualization & Analysis





SaaS Integration

10:00

< Form choice T&M Tracking

Location*

Annex

Gc's reference #

P-0001

First Floor Layout Revision

Cost item #

CI-0025

Framing Connection

Subcontractor's job #

123

Owners/rep #

Status

Select

Description of work*

Rework due to damage from another subcontractor.

Labor (3) Multi-edit

Charm, Ray

Classification: Apprentice

Trade: Concrete

Add Hours

Jordan, Michael

SAVE SUBMIT





Data Visualization & Analysis

10camost.30007#

Apps BIM360 MC API China AU2018 write Live Demos Video Demos quick-demos DevDays 2016 3DWebFest Autodesk Prototype Customer Tech Info meetup Sydney travel » Other Bookmarks

BIM 360 Model Coordination Clash Issues About Config GitHub Xiaodong Liang

BIM 360 Projects List

Autodesk Forge Partner Development

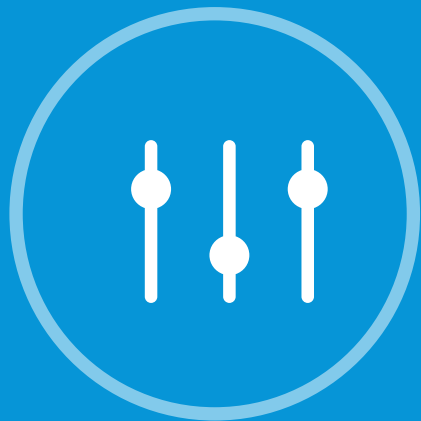
- Forge Infraworks
- Forge Demo Zhong
- Pacific Center Hospital v2
- Daimler POC Project
- Accelerator Sydney sample by Zhong
- xiaodong_test_project_for_case_3391_7**
- Zhong Revit File Upgrader Project
- my_test_project_for_case_3391_12
- Forge Demo ZW DA

ModelSets

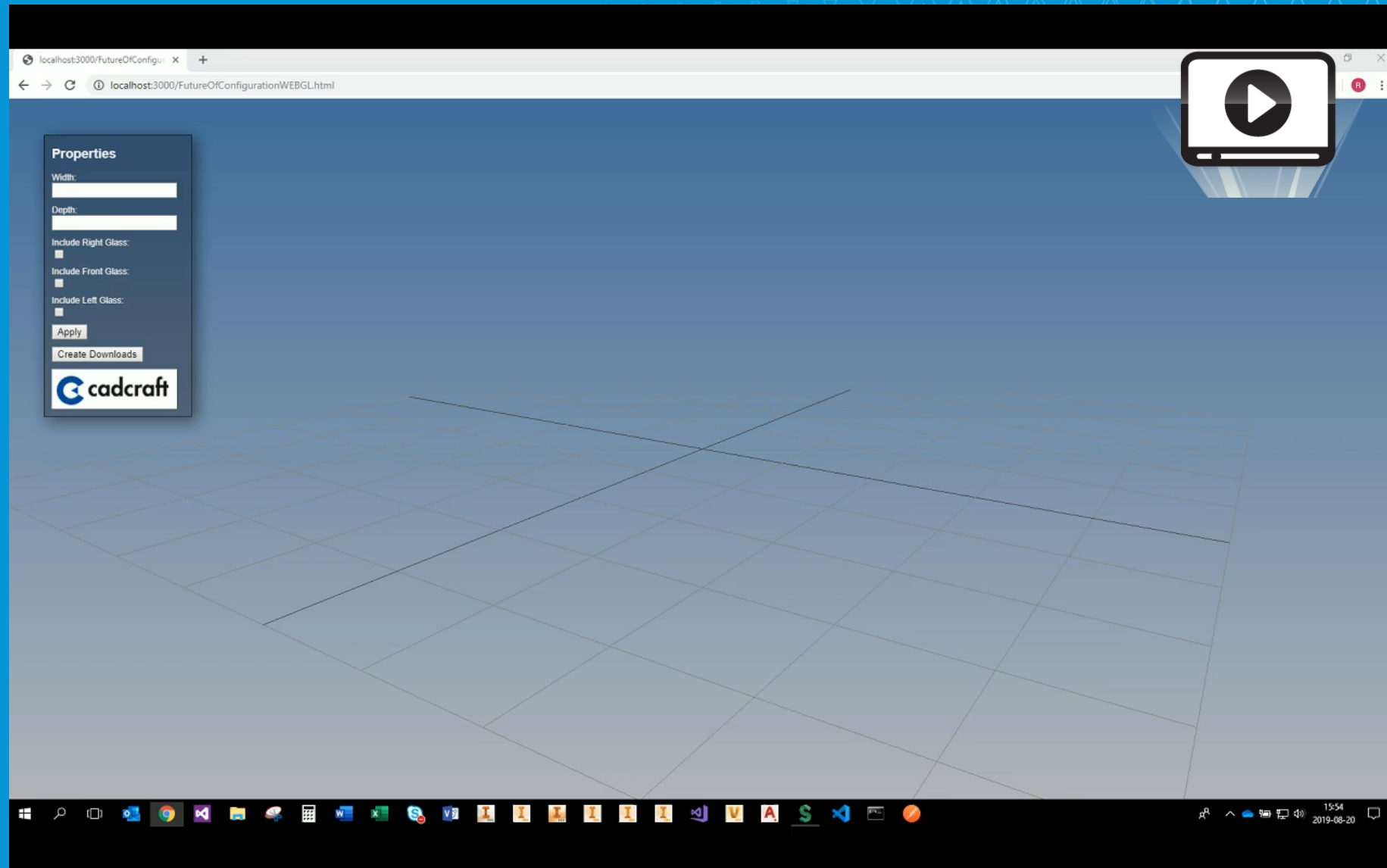
Clash Overview **Clash Issue View**

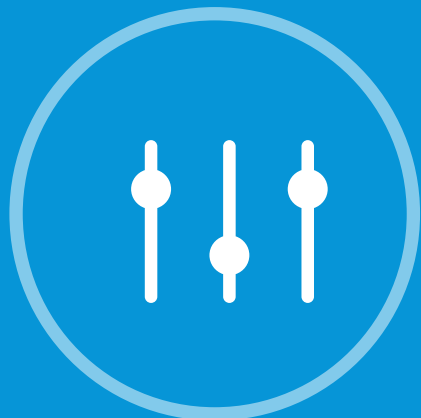
Matrix View by Object Count of Active Clash

PowerBI Analyze by Object Category and Clash Count

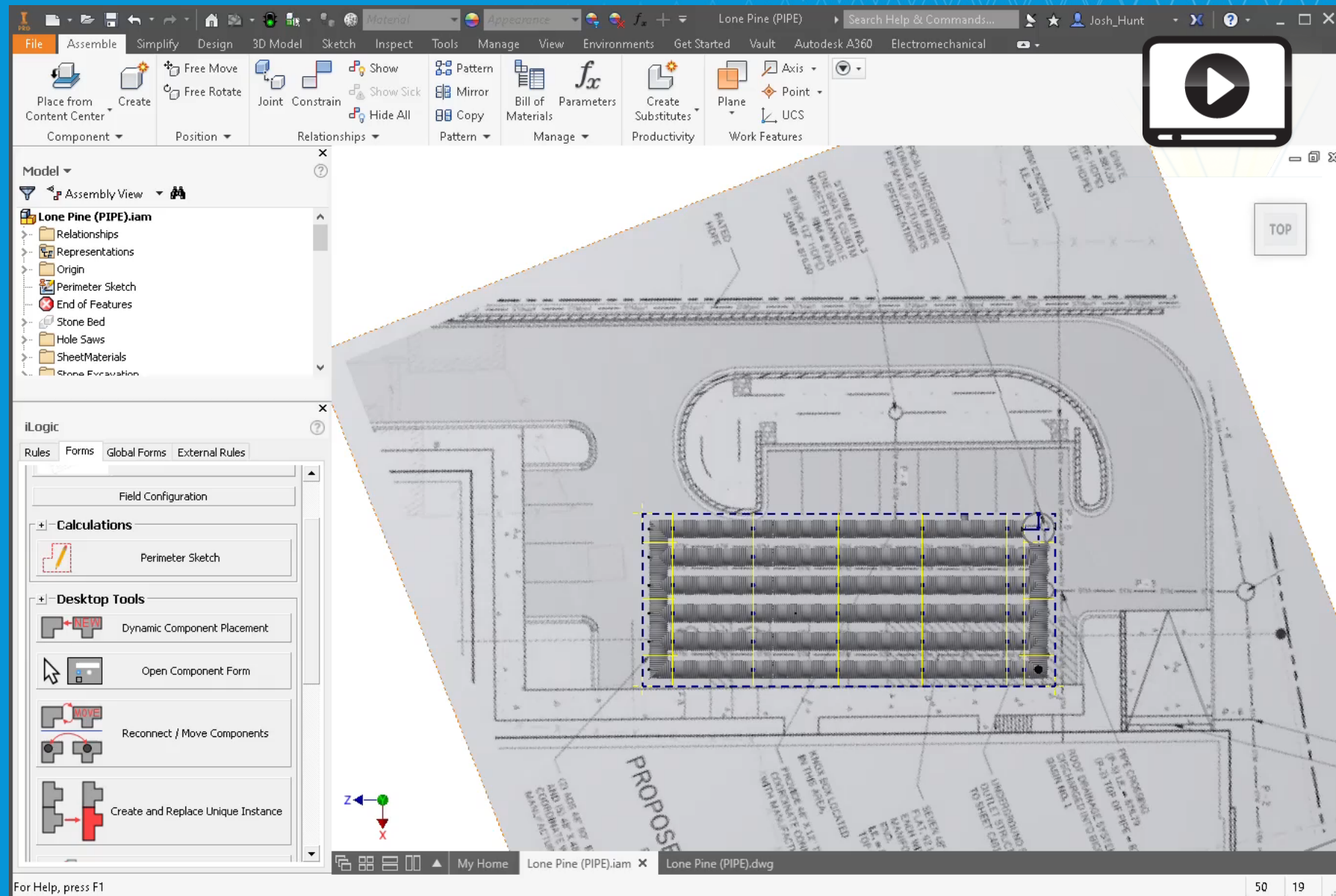


Configurators





Configurators



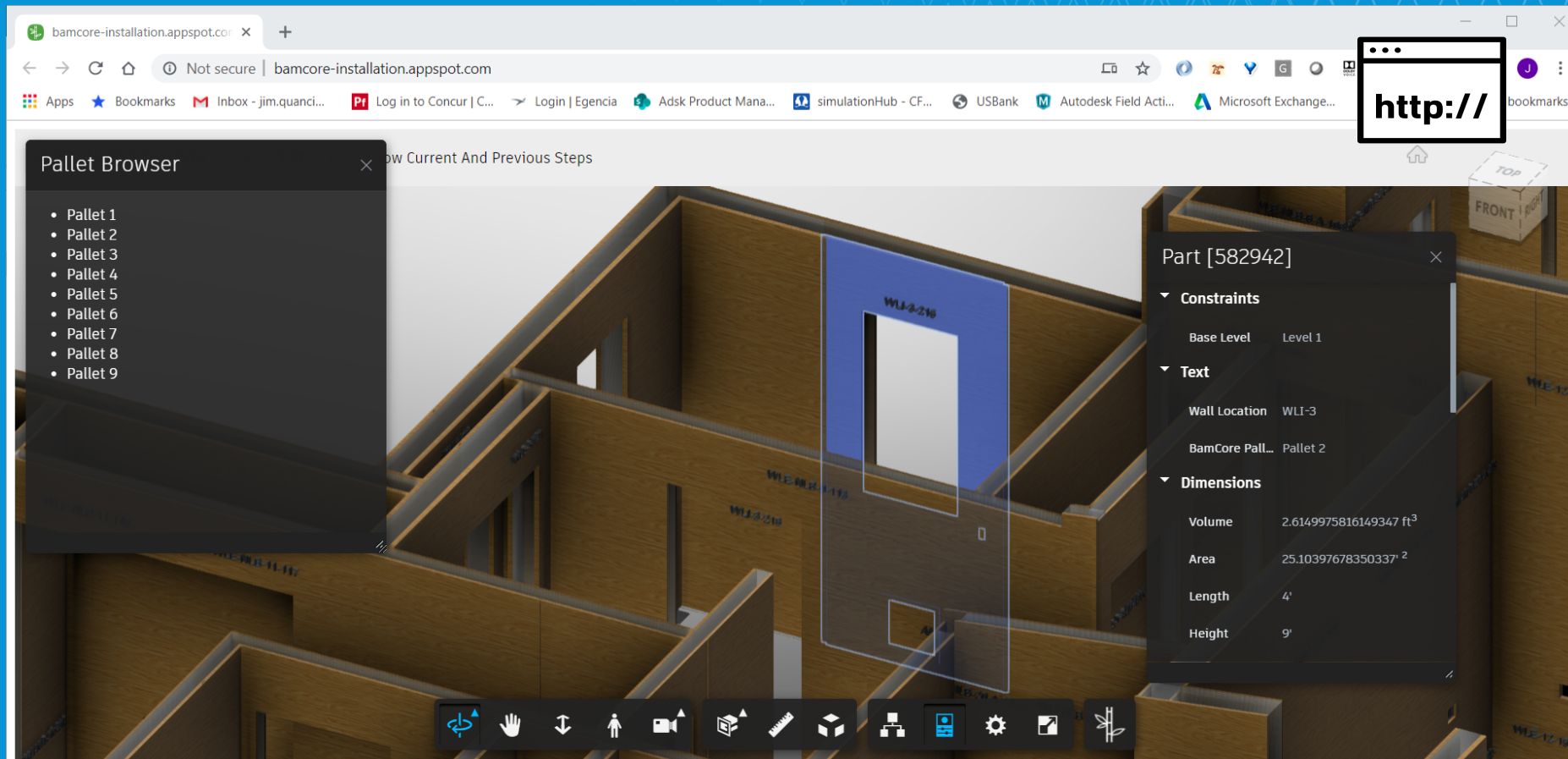


Data Visualization & Analysis





Data Visualization & Analysis



BAMCORE®



AUTODESK® FORGE

Visit us at the Forge Center, in the middle of the Autodesk space in the AU Expo all week...



Forge Center

Meet The Forge Leaders
Networking Happy Hour
(Wednesday 5.30-7.30PM)

Participate in the Forge Scavenger Hunt and be entered into a daily raffle for some cool prizes!



Forge Dev Zone

Hands-on technical support on specific APIs/Services (Tuesday-Thursday)

Tuesday	12:00-2:00PM	Design Automation
Tuesday	5:30-7:30PM	Forge Viewer
Wednesday	10:00-12:00PM	Forge Data Management & Model Derivative
Wednesday	12:00-2:00PM	Forge and BIM 360
Thursday	12:00-2:00PM	Forge Design Automation



Forge Answer Bar

Get answers from our experts
(Tuesday-Thursday)

Blog: <https://forge.autodesk.com.blog>

Samples & Demos: <https://github.com/Autodesk-Forge?tabs=repositories>



FORGE

Powering Your Digital Transformation