



IM124938

Cloud and Desktop — the Best of Both Worlds

Marco Mirandola
CEO / coolOrange

Klaus Lörincz
DLM Team Manager / Autodesk Consulting

Join the conversation #AU2017



Your Instructor's



Marco Mirandola

CEO / coolOrange

coolOrange

Working with Autodesk
Products since 2000

Time	Event
Tuesday, Nov 14, 2:15 PM - 3:15 PM	Cloud and Desktop— the Best of Both Worlds



Klaus Lörincz

DLM Team Manager /
Autodesk Consulting

Working with Autodesk Products
since 2006

Time	Event
Tuesday, Nov 14, 2:15 PM - 3:15 PM	Cloud and Desktop— the Best of Both Worlds

Agenda

Desktop vs Cloud or Cloud & Desktop

Samples of Cloud & Desktop

Tips

Questions

Extend Desktop through Cloud

Keep your
files on your

Desktop



Extend your processes
with data in the

Cloud



Office 365



Desktop



Cloud





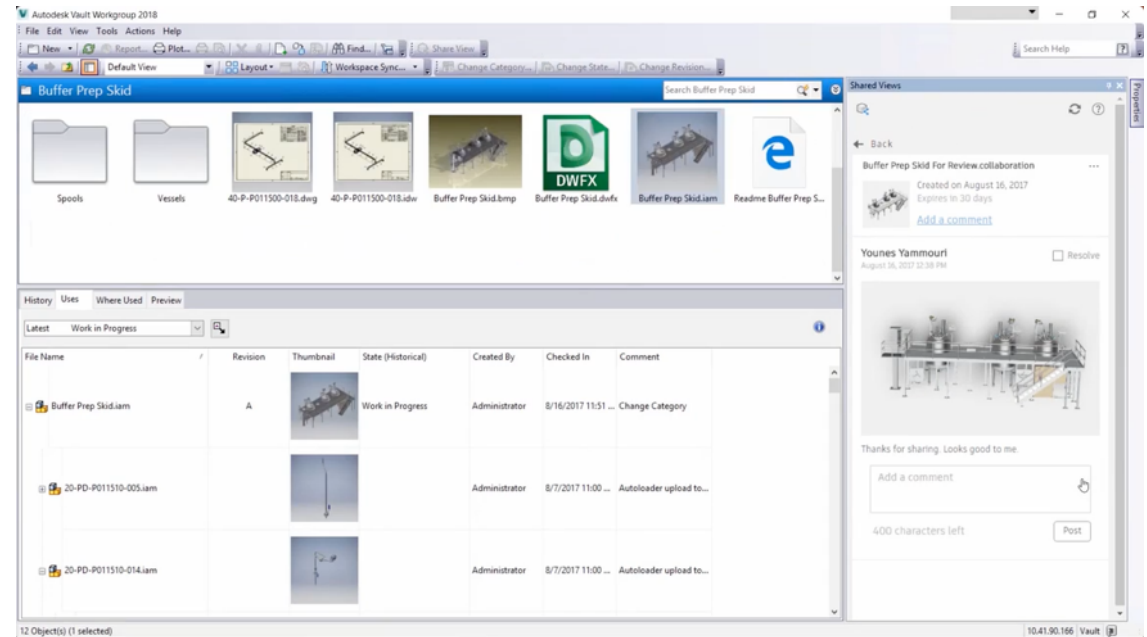
The background of the slide is a complex, abstract wireframe mesh. The mesh is composed of numerous interconnected lines forming a series of irregular, organic shapes that resemble a network or a series of interconnected tubes. The lines are thin and grey, set against a light grey background. A solid blue horizontal bar spans the bottom portion of the image, starting from the left edge and extending to the right. The word "Samples" is written in white, sans-serif font on this blue bar.

Samples

Vault 2018.1 Shared Views

Benefits:

- Only the viewable files go to the Cloud
- Autodesk Viewer allows for secure Viewing, Markup & Commenting
- Activity Stream is within Vault attached to the document in a panel
- Viewable will be deleted after 90 days not being used in collaboration
- No CAD Licenses for Collaboration or Design Review needed.



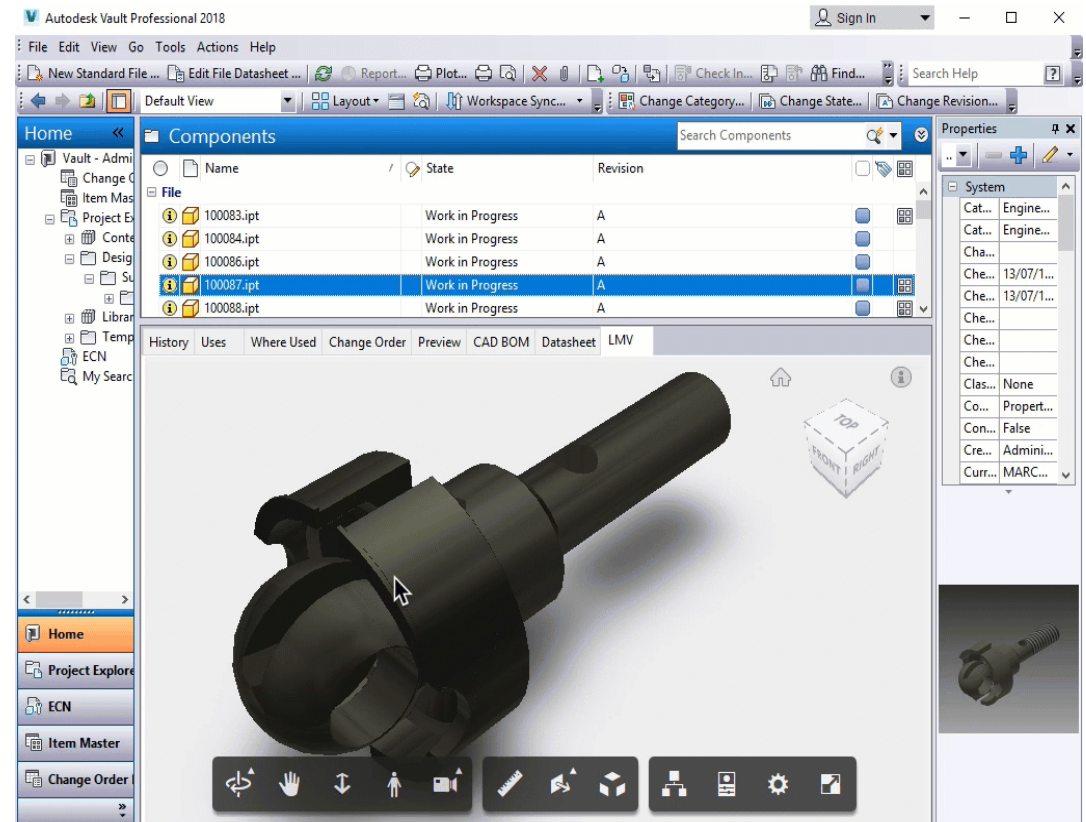
Viewing, the Cloud way

Benefits:

- No CAD license
- Many supported formats
- Versatility

Technique:

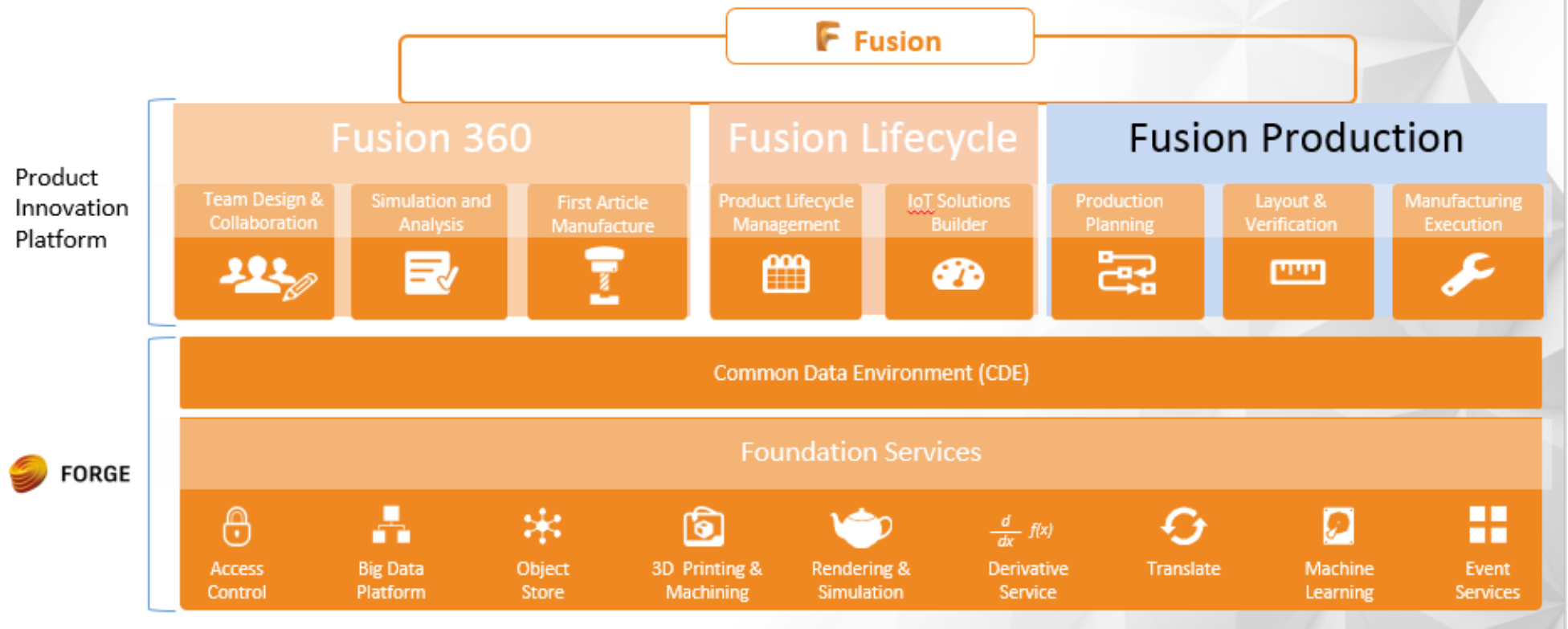
- File conversion via JobProcessor and Derivative API
- Downloadable converted file (SVG)
- Embed viewer in Web and Desktop



Forge



The Platform for our Cloud Products



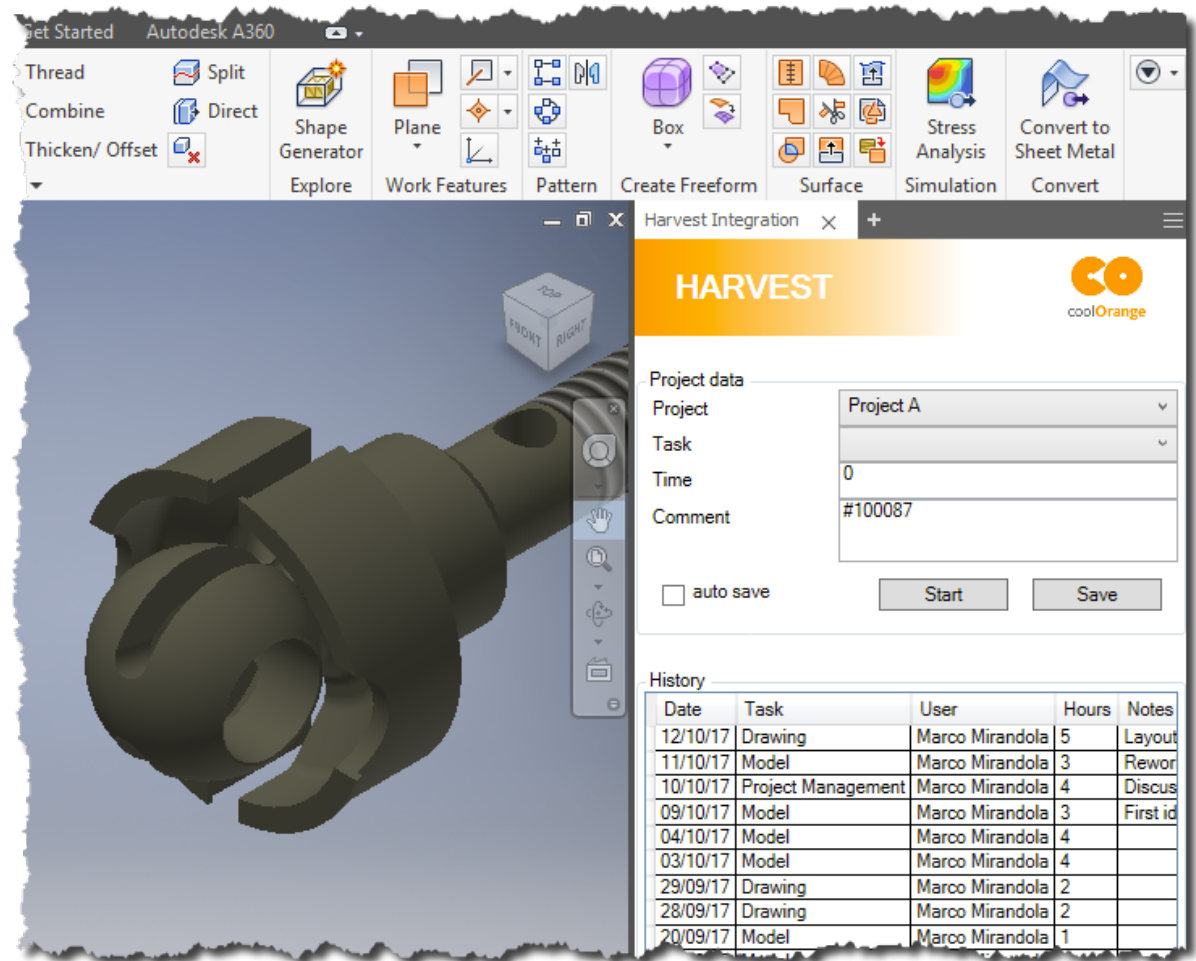
Time tracking via Cloud

Benefits

- Smart time tracking
- Central data store
- Reporting

Technique

- Vault/Inventor –Net Add-in
- REST API



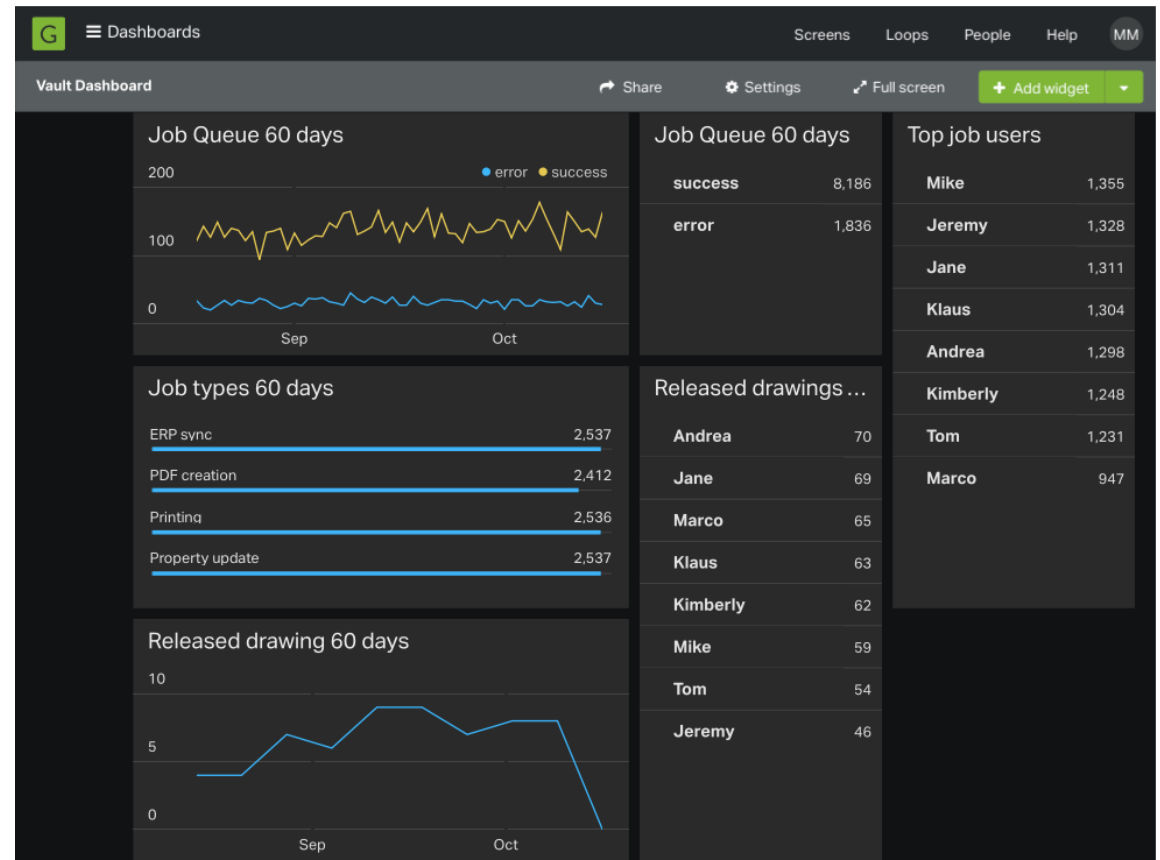
Business Intelligence via Cloud

Benefits:

- Company wide reporting
- Live data
- Combination with other data sources

Technique:

- Push data to data set



Learnings

Desktop Apps are strong business companion

Cloud can deliver additional values

Desktop & Cloud will generate
your business advantage

Tipp

Before you select your next
data intensive application,
check first the REST-API

Questions ?

Blog Resources

Autodesk Vault

- <http://underthehood-autodesk.typepad.com>



Autodesk Forge

- <https://forge.autodesk.com/blog>



Forge Community Blog

Information. Insights. Code. Connections.

coolOrange

info@coolorange.com

www.coolorange.com

blog.coolorange.com



Please Fill Out Your Surveys

Make sure your voice is heard by completing your surveys!

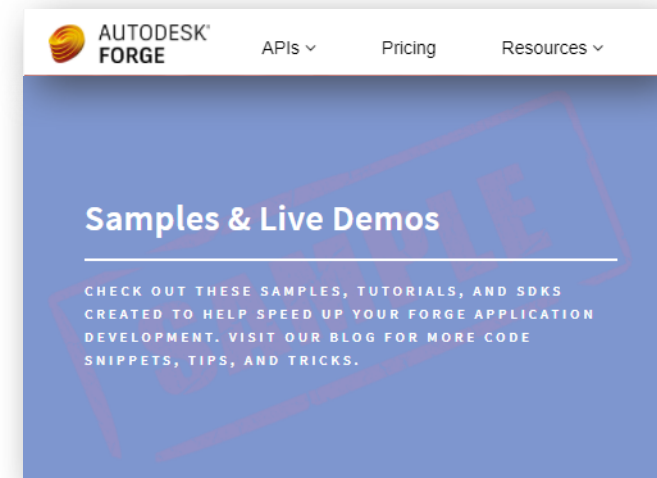
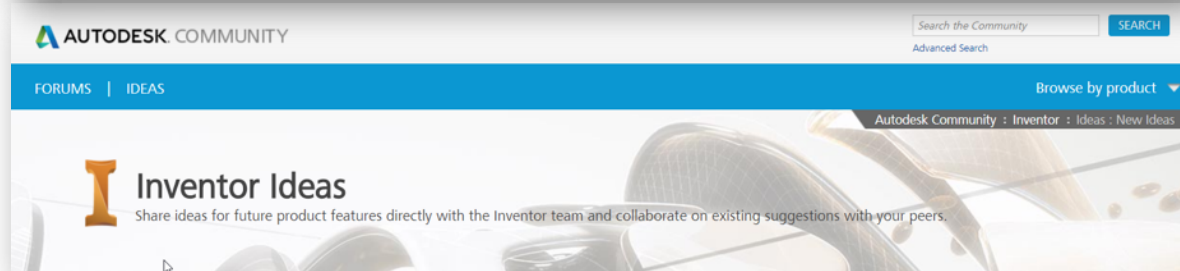
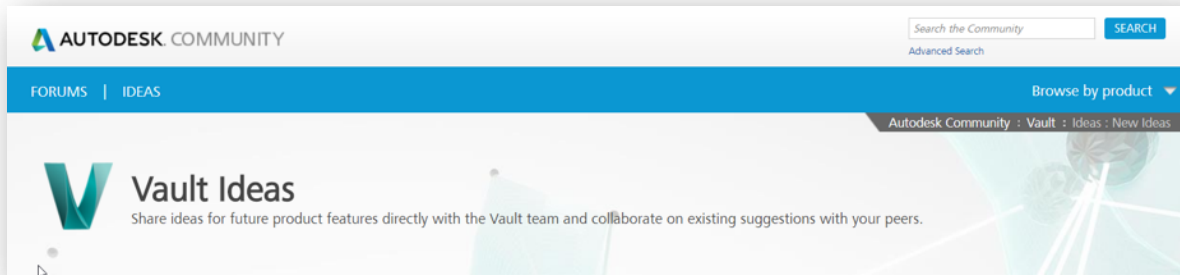
Please take the time to complete your survey for this and every class you attend at Autodesk University.

Autodesk uses this information to know what classes to offer in the future.



Got An Idea? Share it!

- Share your idea directly with the Autodesk Development Team
- Community can support ideas to surface the most relevant



More Questions? Visit the AU Answer Bar

- Seek answers to all of your technical product questions by visiting the [Answer Bar](#).
- Open daily in the Exhibit Hall.
- Staffed by Autodesk developers, QA, support engineers, and AU speakers ready to help you through your most challenging technical questions.





Autodesk and the Autodesk logo are registered trademarks or trademarks of Autodesk, Inc., and/or its subsidiaries and/or affiliates in the USA and/or other countries. All other brand names, product names, or trademarks belong to their respective holders. Autodesk reserves the right to alter product and services offerings, and specifications and pricing at any time without notice, and is not responsible for typographical or graphical errors that may appear in this document.

© 2017 Autodesk. All rights reserved.

