

AnyCAD & the Exchangeability of Inventor

Mike Thomas

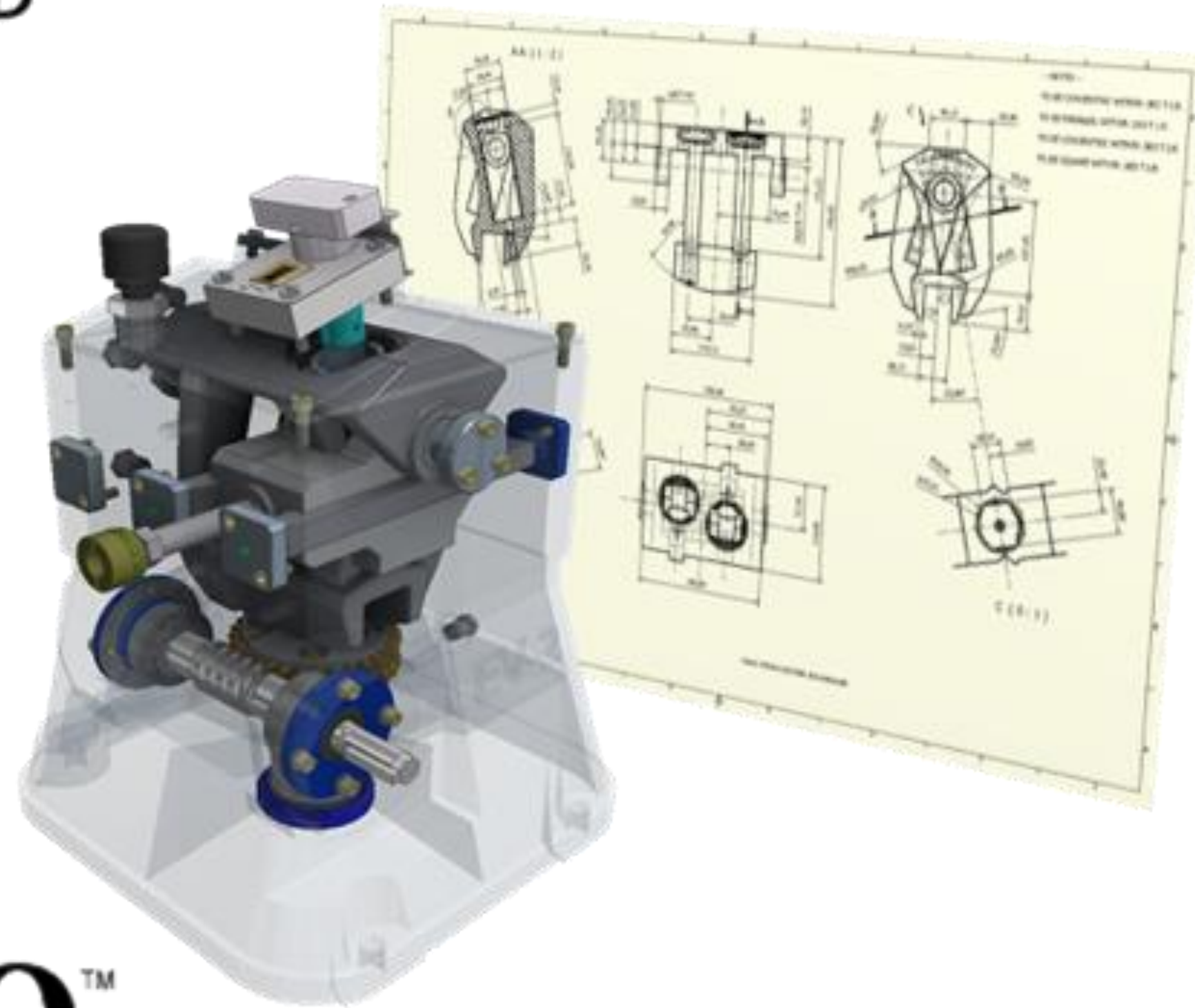
Technical Services Manager – Prairie Machine



AnyCAD, AnyTime, AnyWhere, Your Way

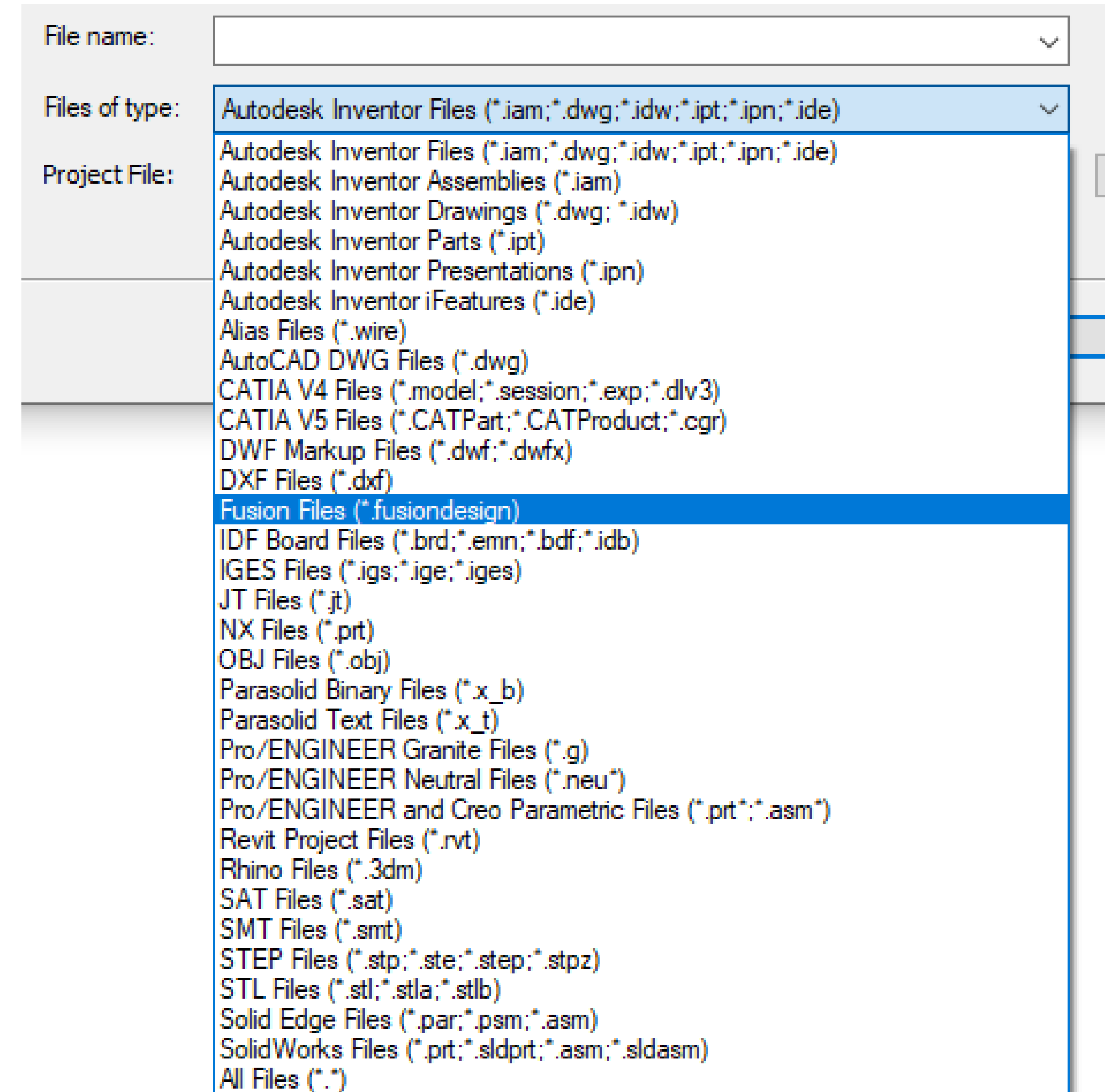
AnyCAD is Inventor's ability to work with data from a variety of sources. **AnyCAD** allows you to effectively leverage non-native files and is built into Inventor.

We've all been there. Multiple sources of information, various software systems, and everyone needing to efficiently communicate to complete the project. AnyCAD software provides the medium to use, reuse, and exchange data of various types and from different sources. In this class, we'll explore the different types of data supported by Inventor software and the applications included in the Product Design & Manufacturing Collection.



All this?

- 3rd party files from CATIA, NX, Pro-E/Creo, Rhino, Solid Edge, and Solidworks
- Neutral formats IGES, JT, Parasolid, OBJ, SAT, STL, and STEP
- IDF
- Autodesk Alias
- **Newer versions of Inventor**



Convert vs Reference

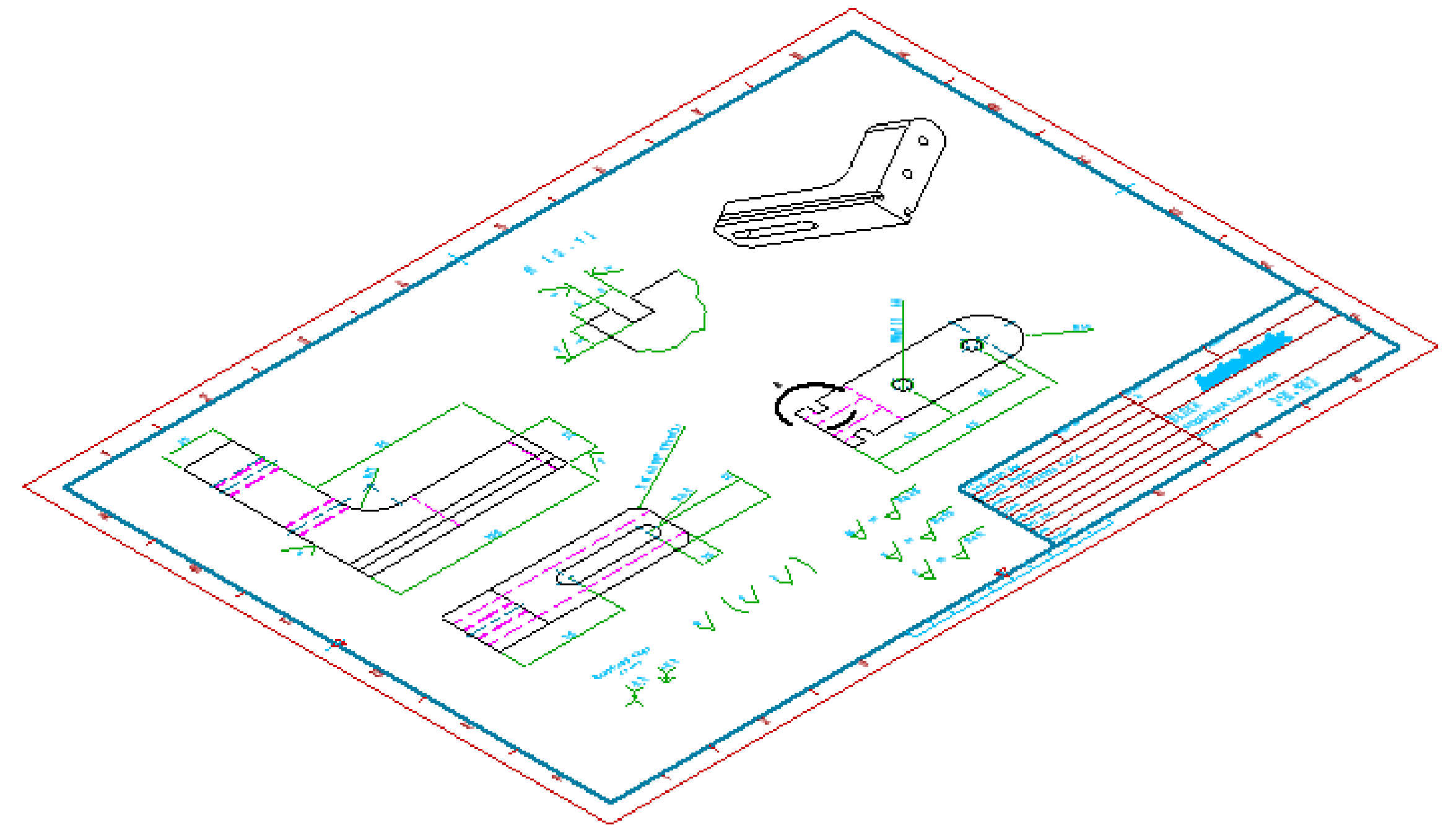
- **Reference Model** maintains the link
- **Convert Model** converts the model into Inventor parts and assemblies



DWG Underlay

Create 3D Inventor parts associative to source 2D geometry created in AutoCAD

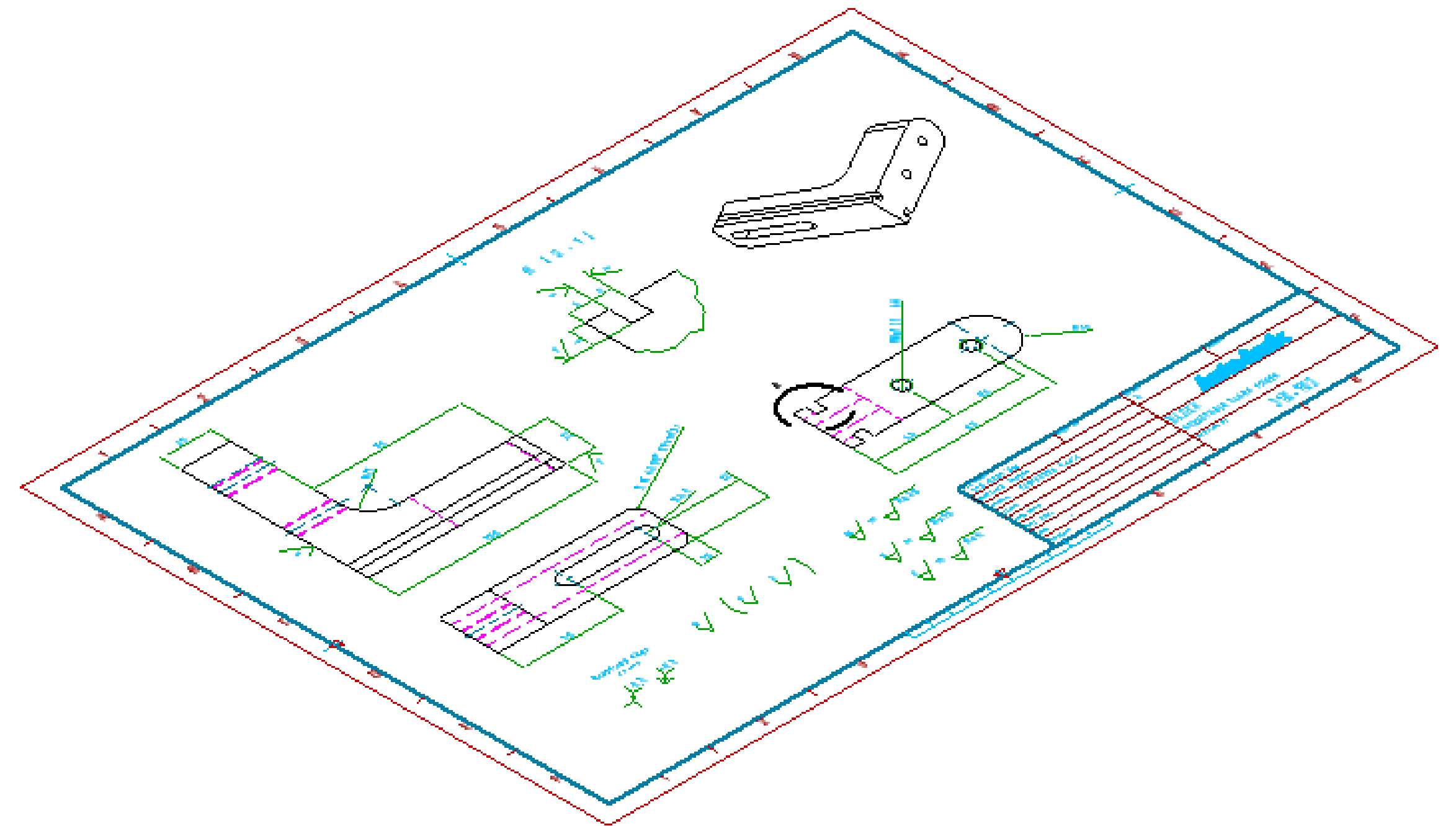
Use **Project DWG Geometry** to copy the geometry into the sketch.

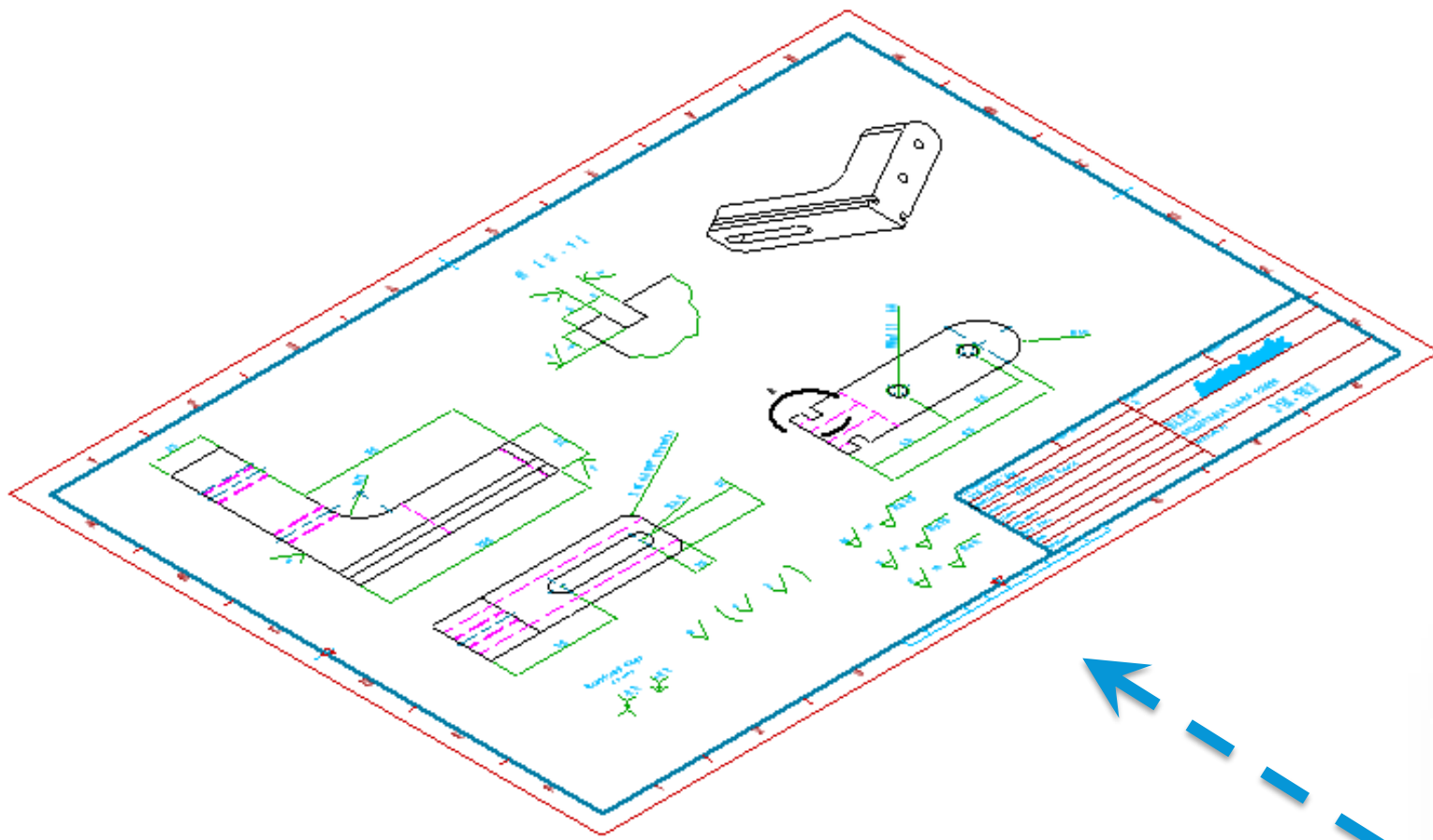


AutoCAD Documentation

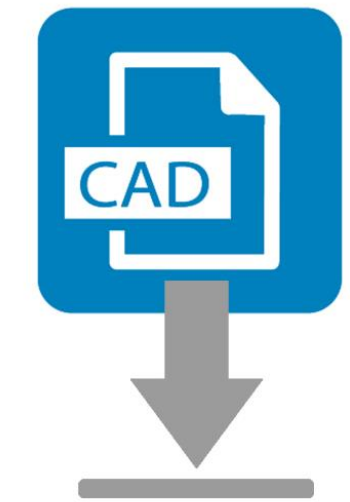
Use AutoCAD's layout tools to generate base views, projected views, section views, and detail views of existing solid and surface models created with Autodesk Inventor

Within AutoCAD Mechanical use the Inventor Link feature to associatively link an Inventor model to your AutoCAD Mechanical drawing, generate 2D drawings, and use ACM's dimensioning and annotation tools to detail the Inventor model.





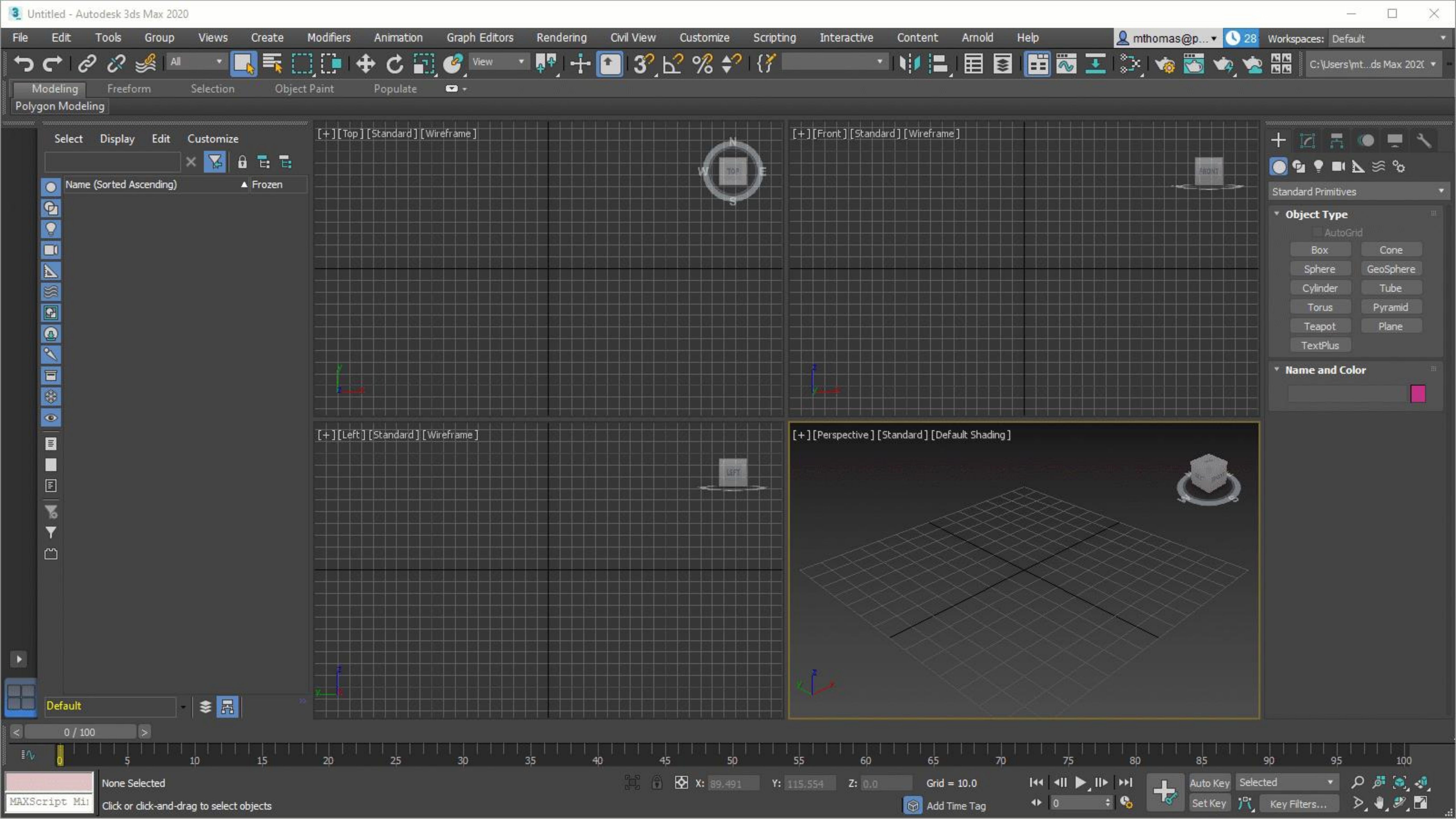
3D SOLIDWORKS

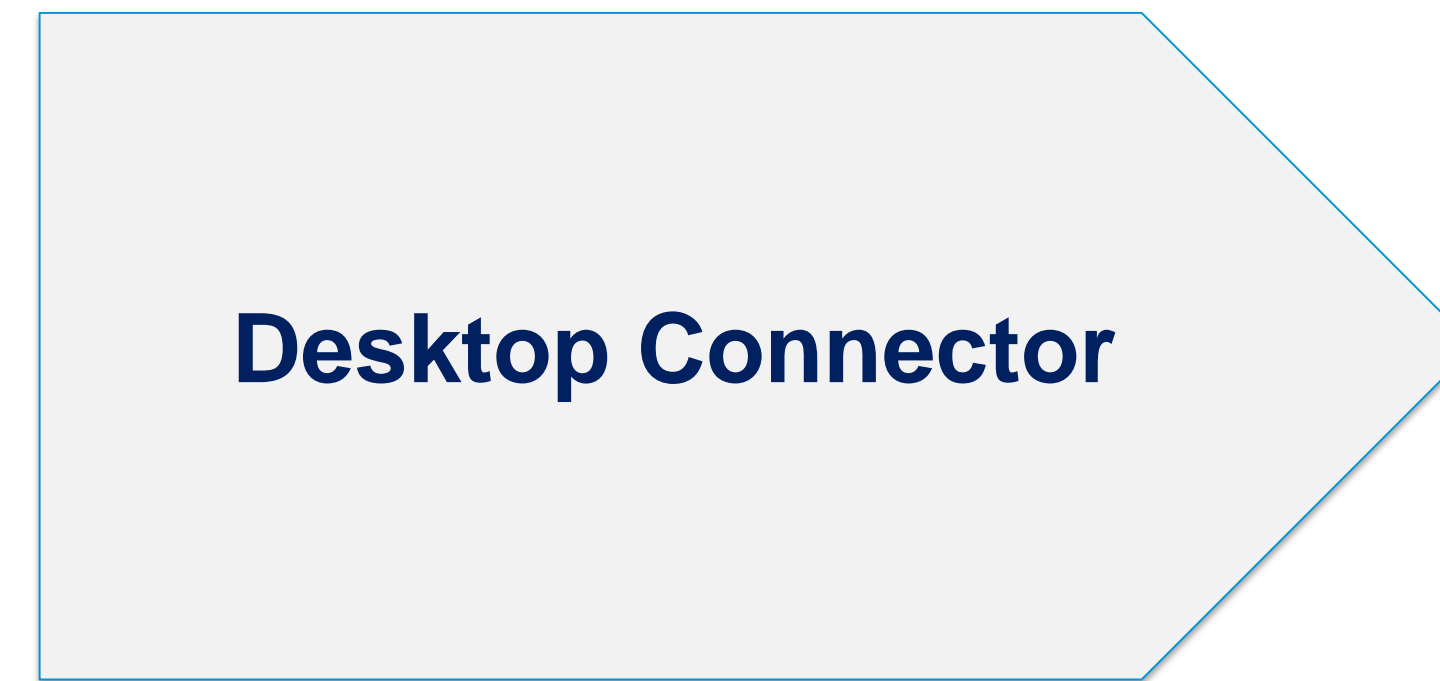


Point Cloud

- Large collection of points
- Derived from raw data... use Recap Pro to convert to scan files (RCS)
- Place into Inventor









AUTODESK®

Make anything™

Autodesk and the Autodesk logo are registered trademarks or trademarks of Autodesk, Inc., and/or its subsidiaries and/or affiliates in the USA and/or other countries. All other brand names, product names, or trademarks belong to their respective holders. Autodesk reserves the right to alter product and services offerings, and specifications and pricing at any time without notice, and is not responsible for typographical or graphical errors that may appear in this document.

© 2019 Autodesk. All rights reserved.

