

Looking into the Crystal Ball: The Future of Vault

Younes Yammouri

Sr. Product Manager



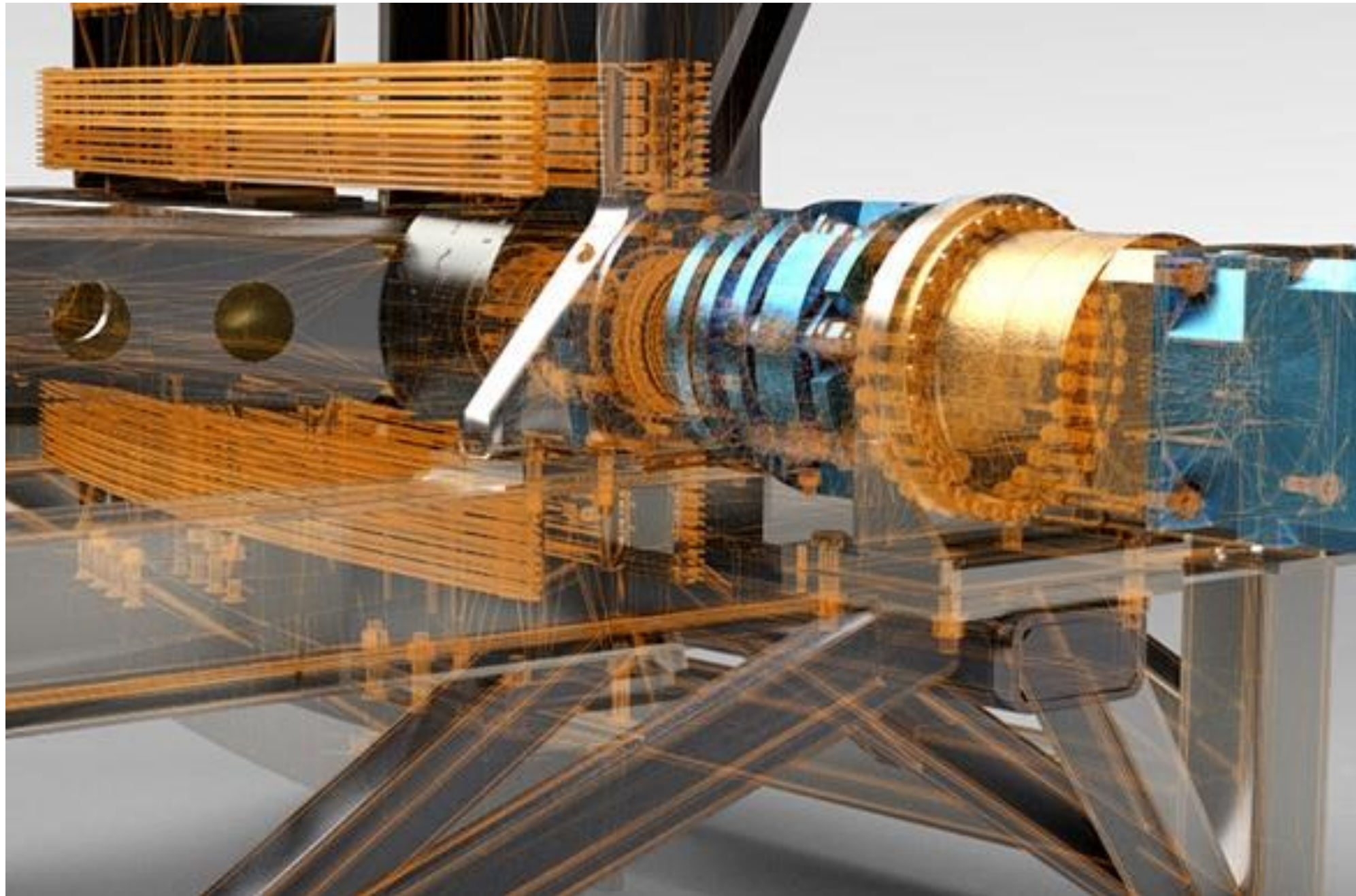
Younes Yammouri

Younes Yammouri has been with Autodesk since March 2005 and is currently a Vault product manager. He has spent the last 20 years absorbing and applying product data management technology as technical support, quality assurance engineer, product designer, and product manager. As part of product management role he establish and maintain successful relationships with key customers and partners to ensure successful delivery of customer focused solution.

SAFE HARBOR

We may make statements regarding planned or future development efforts for our existing or new products and services. These statements are not intended to be a promise or guarantee of future availability of products, services or features but merely reflect our current plans and based on factors currently known to us. These planned and future development efforts may change without notice. Purchasing decisions should not be made based upon reliance on these statements.

These statements are being made as of 10-28-2020 and we assume no obligation to update these forward-looking statements to reflect events that occur or circumstances that exist or change after the date on which they were made. If this presentation is reviewed after 10-28-2020, these statements may no longer contain current or accurate information.



A glimpse of the future

Our roadmap is by no means a comprehensive list of everything coming in Vault. We simply want to give you a glimpse of what we're working on for the future to get a sense of focus areas and direction.

Modern, Connected & Insightful Experience

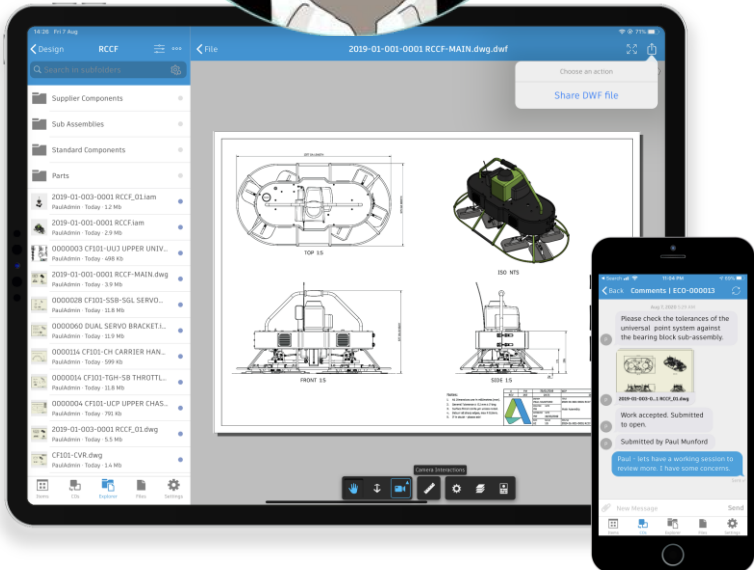
Author

*InCAD Experience
Design Data Creation*



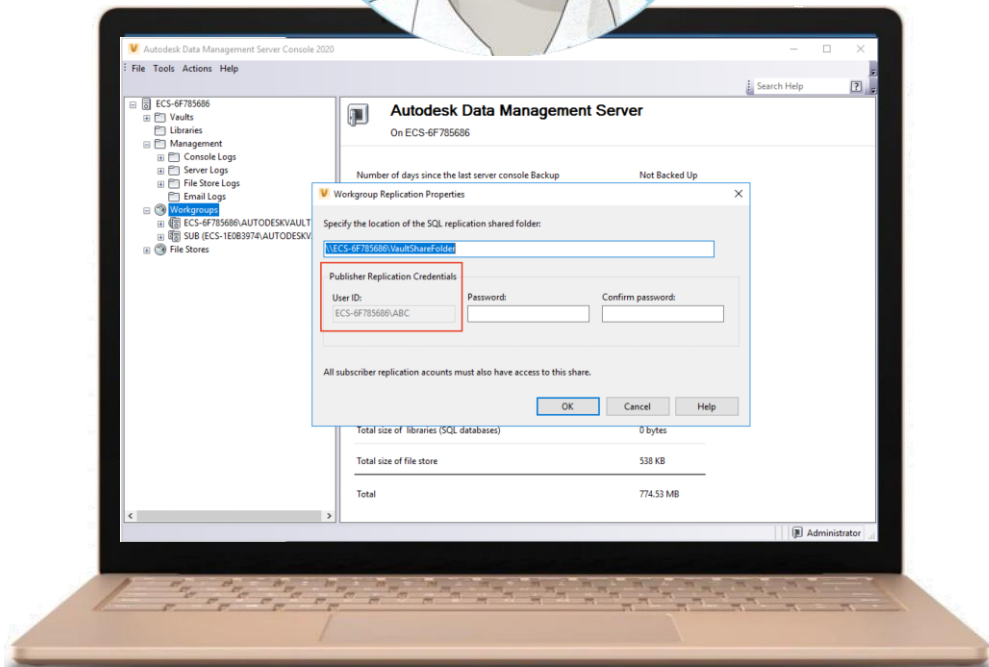
Contributor

*Desktop & Mobile
Experience
Process workflows*



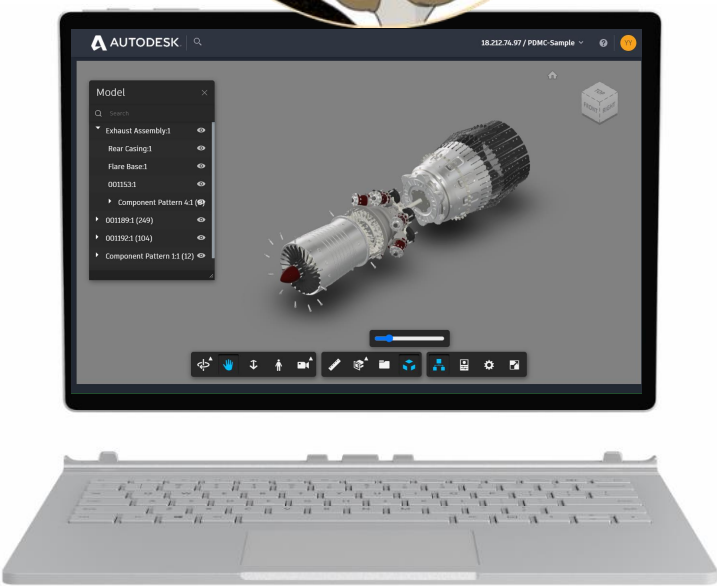
Administrator

*Desktop, Browser & Mobile
Experience*



Consumer

*Browser Experience
Navigate & View*



Authors

Modern, Connected &
Insightful Experience

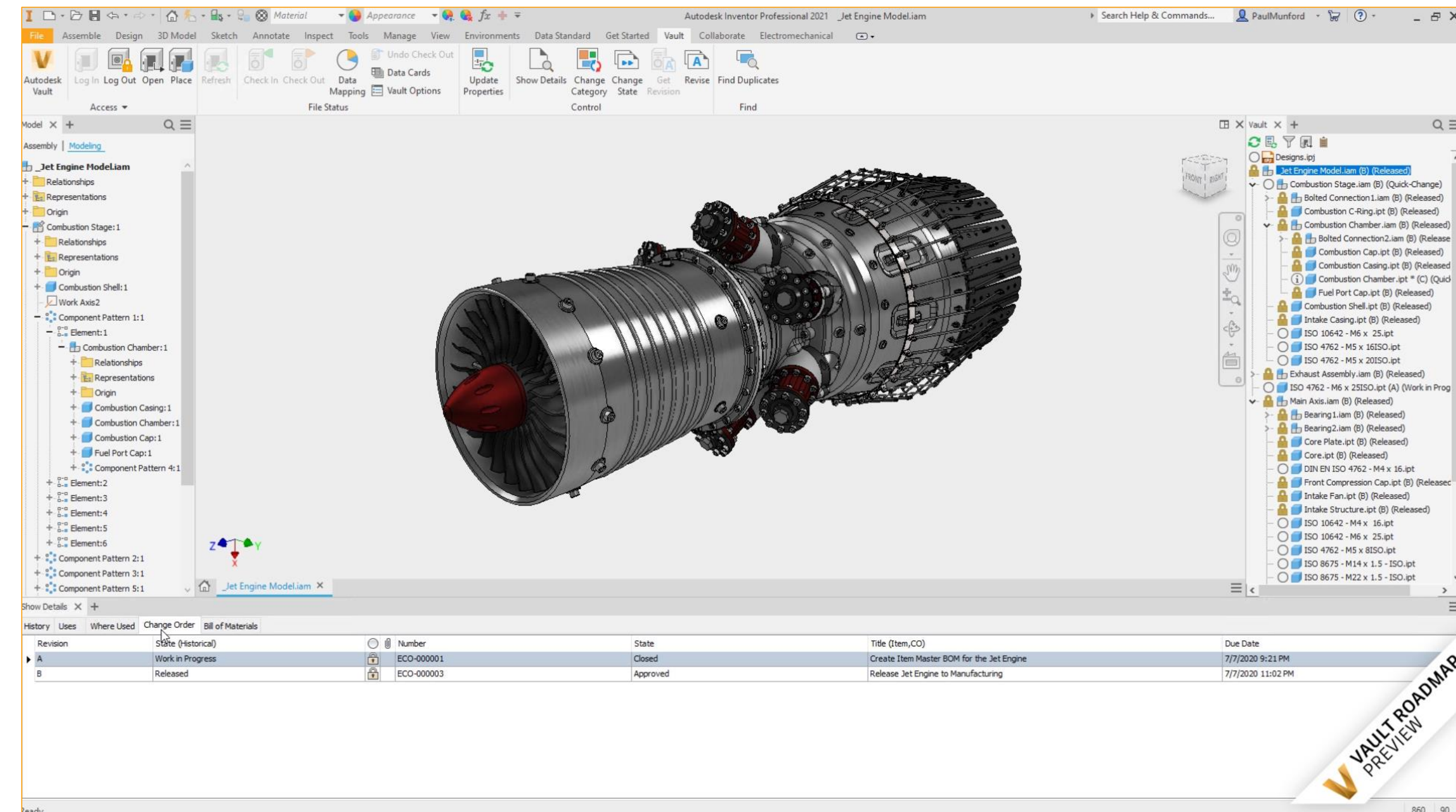


Modern, Connected & Insightful Experience

Access more Contextual Data in CAD Application



- **Dockable panel:** Access all information related to your design through a dockable panel that includes tabs for uses, where used, bill of materials, and change orders
- **Additional workflows/ commands** like Assign Item, Copy Design, Edit Properties and much more while continuing to work on your design



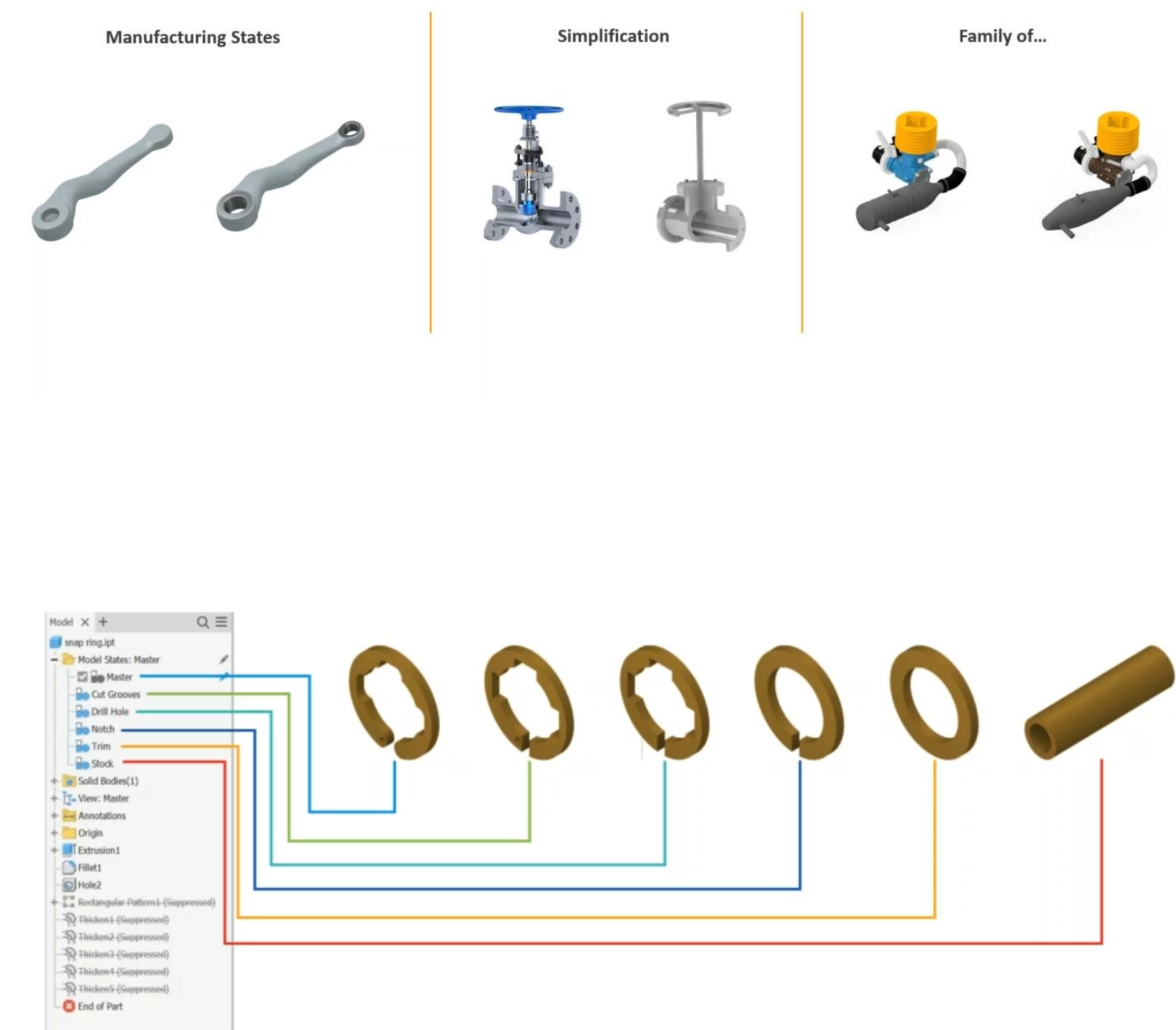
Modern, Connected & Insightful Experience

Model State managed within Vault



Manage different representations of part or an assembly within a single document within Vault

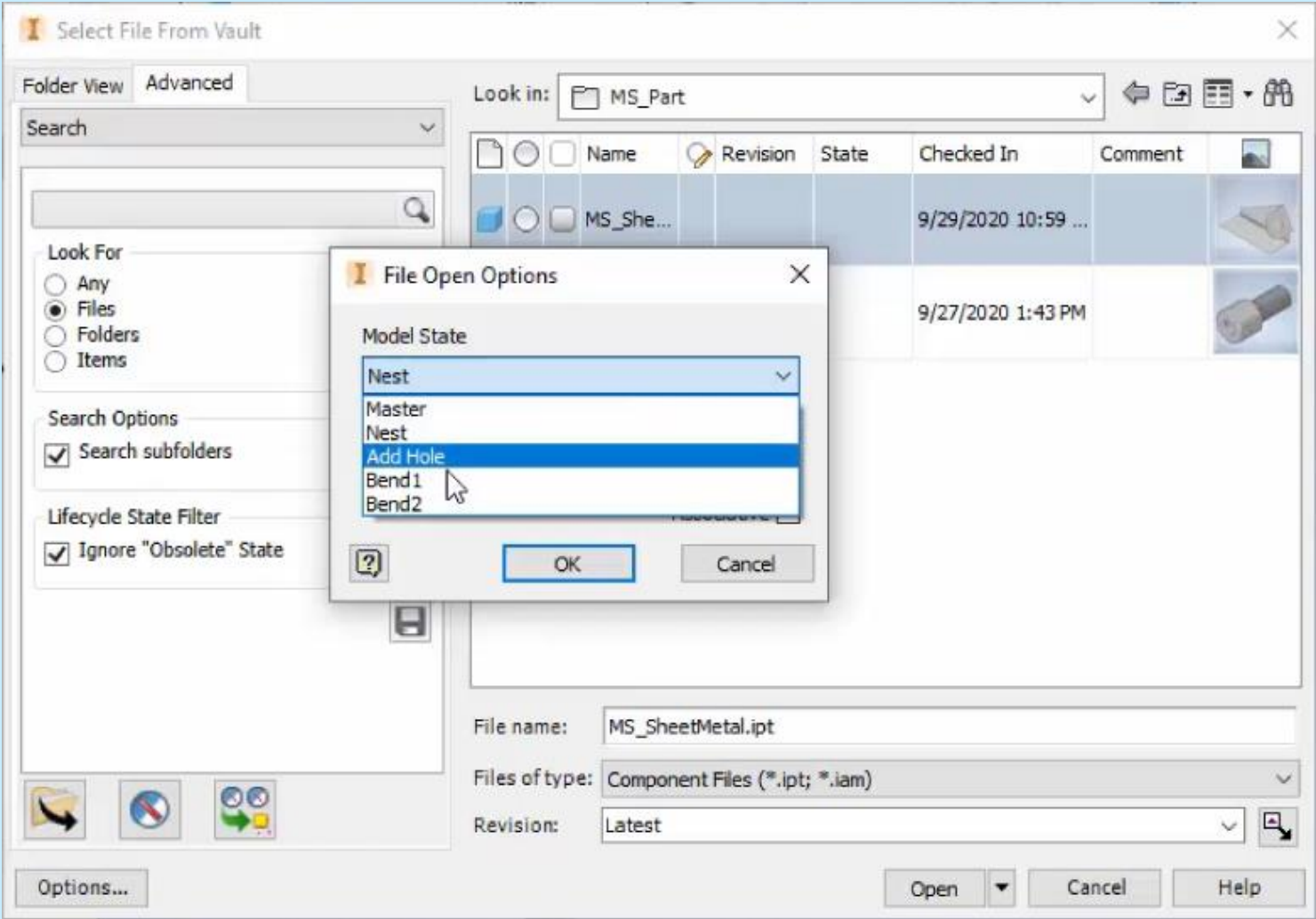
- Provide a convenient way to engineer, manage, manufacture your designs with different dimensions, components, properties, parameters or simplification
- Support all model state workflows from data management perspective



Model State & Vault Support



Open/Place in Inventor Addin



Assign Item & Properties

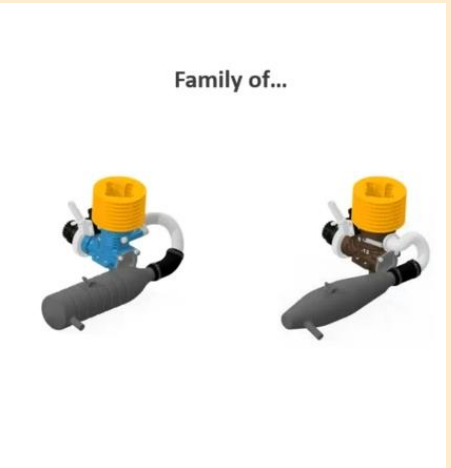
ITEM MASTER

Where Used					
Latest Work in Progress					
Name	Re...	Title	Title (Item,CO)	Description (Item,CO)	
Speaker.iam	A	Speaker Family			
Items					
SS-ASM-987654	A	Speaker Family	Speaker Family	Single Speaker (Mountable)	
DS-ASM-987654	A	Speaker Family	Speaker Family	Dual Speaker (Mountable)	
DS-ASM-123456	A	Speaker Family	Speaker Family	Dual Speaker (Glueable)	
SS-ASM-123456	A	Speaker Family	Speaker Family	Single Speaker (Glueable)	

For Each model state with different part number a Vault Item is created

Search results item based

Model state properties are mapped to item properties



BOM variants

Create and manage BOM variants including BOM compare capabilities

DS-ASM-987654	Speaker Family	Dual Speaker (Mountable)	A	In Review
---------------	----------------	--------------------------	---	-----------

General History Bill of Materials Where Used Change Order View File-Import					
Latest In Review Today Multi-Level All Rows					
Number	Quantity	Title (Item,CO)	Description (Item,CO)	Revision	
DS-ASM-987654	-	Speaker Family	Dual Speaker (Mountable)	A	
SF-PRT-987654	1 Each	Speaker Frame (Mountable)	Speaker Frame (Mountable)	A	
M-PRT-654321	1 Each	Magnet	Magnet	A	
02-6075	1 Each	Membrane	Speaker Membrane	A	
02-6076	1 Each	Second Speaker	High Tone Add-on Speaker	A	

DS-ASM-987654 - In Review - Item (Read Only)									
File Edit View Actions Help Mechanical Bill of Mat... Compare SS-ASM-123456 Latest									
General History Bill of Materials Where Used Change Order View File-Import									
A In Review Today Multi-Level All Rows									
Number	Q...	Title (Item,CO)	Description (Item,CO)	Revision	State (Historical)	...	Row Type	Row Order	
DS-ASM-987654	-	Speaker Family	Dual Speaker (Mountable)	A	In Review		CAD	0	
SF-PRT-987654	1 ...	Speaker Frame (Mounta...	Speaker Frame (Mounta...	A	In Review		CAD	0	
M-PRT-654321	1 ...	Magnet	Magnet	A	In Review		CAD	0	
02-6075	1 ...	Membrane	Speaker Membrane	A	In Review		CAD	0	
02-6076	1 ...	Second Speaker	High Tone Add-on Spea...	A	In Review		CAD	0	
SF-PRT-123456	1 ...	Speaker-Frame (Glueable)	Speaker-Frame (Glueable)	A	In-Review		CAD	0	

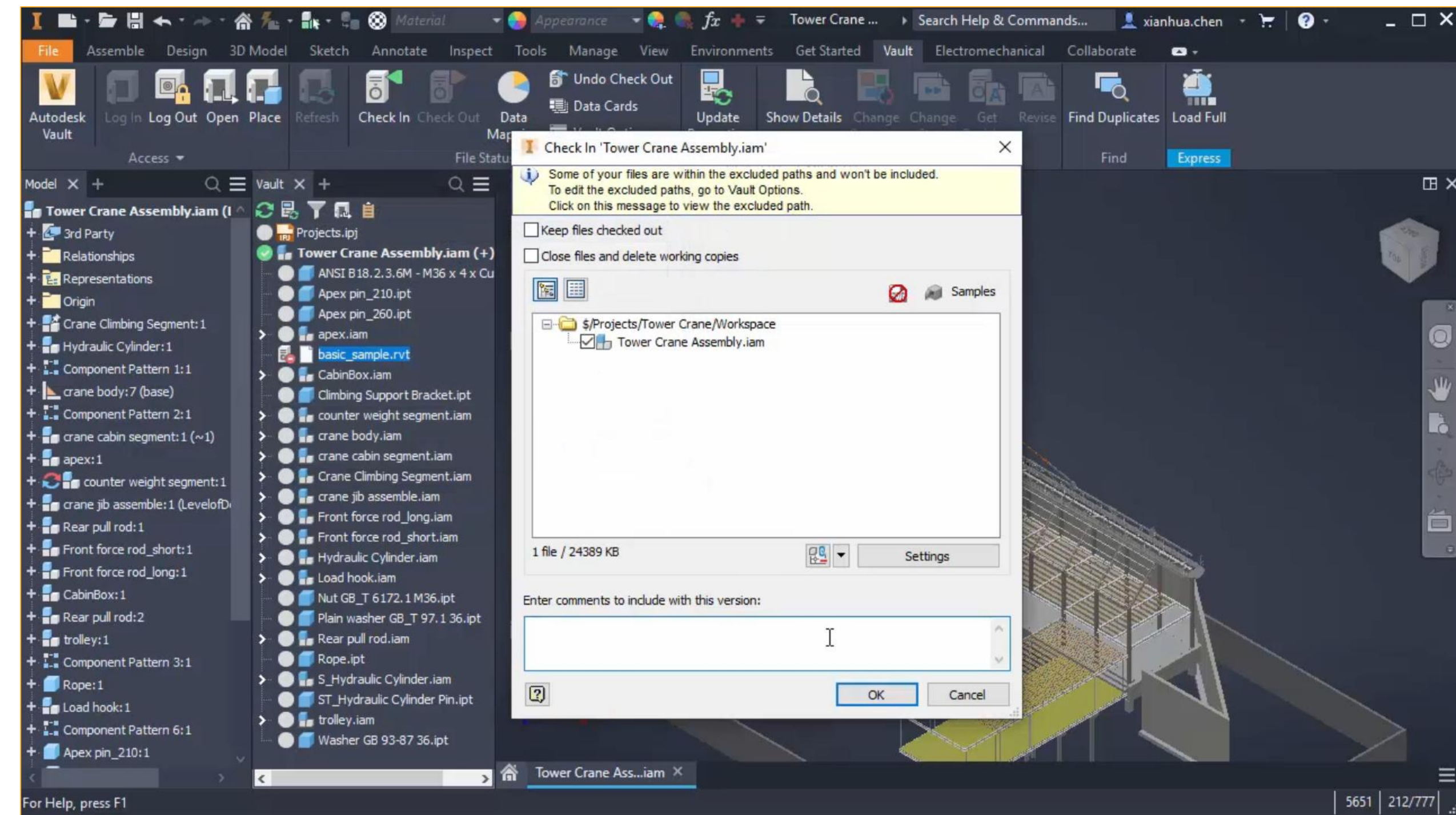
Modern, Connected & Insightful Experience

Keep only relevant data managed within Vault



Keep only relevant data for design process managed within Vault by leveraging capability to exclude specific files located into local, network folder or in Cloud services

- Exclude path by using Vault Options within Inventor/Vault Add-in
- Files within the excluded paths will not be included during check-in process for example Revit files managed in BIM 360, Point Cloud



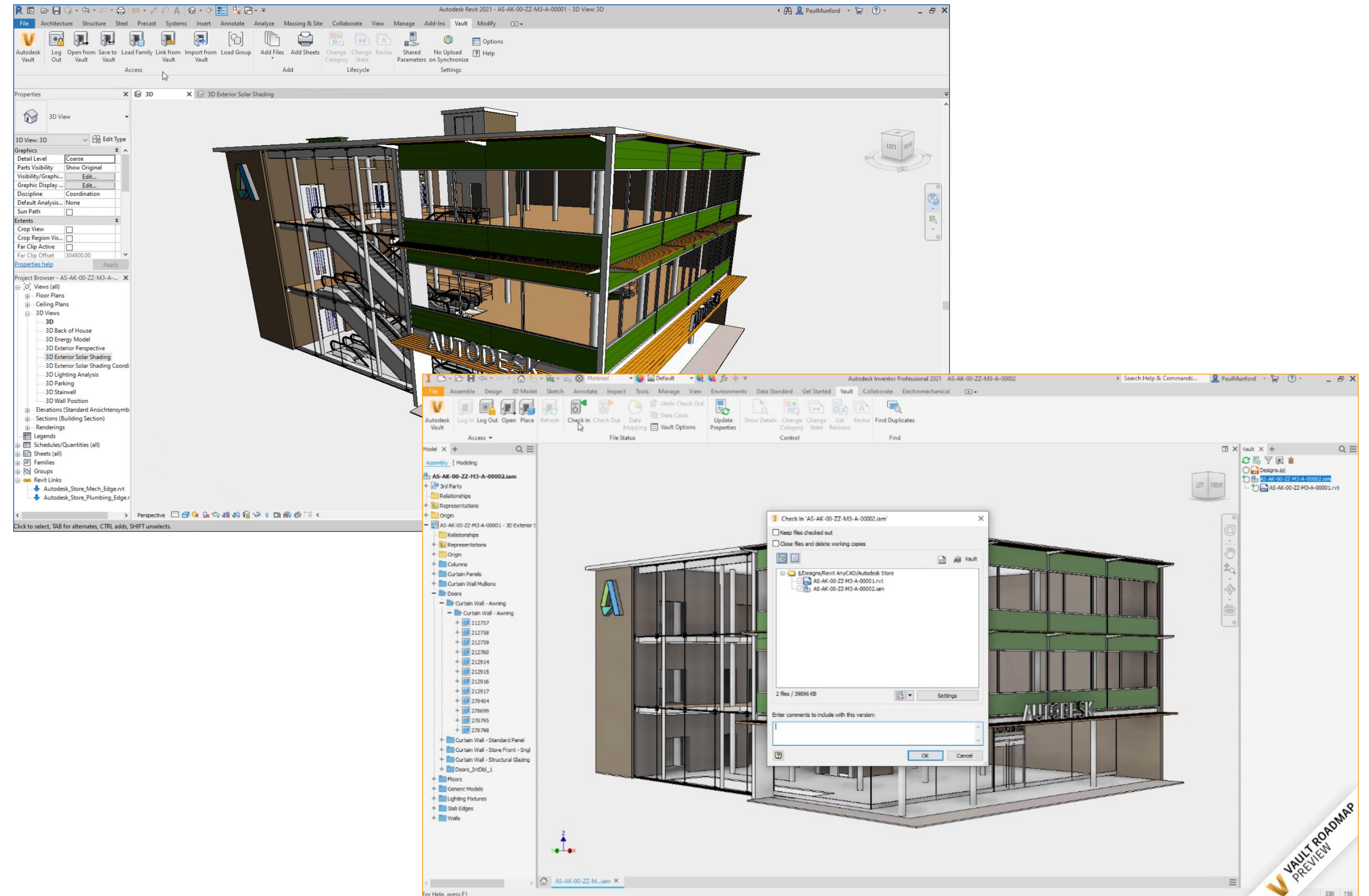
Modern, Connected & Insightful Experience

Industry Convergence & Inventor - Revit Interop



Inventor Revit Interop

- Archive Revit files (Inventor AnyCAD)
- Inventor Place from Vault command supports managed Revit files in Vault



Modern, Connected & Insightful Experience

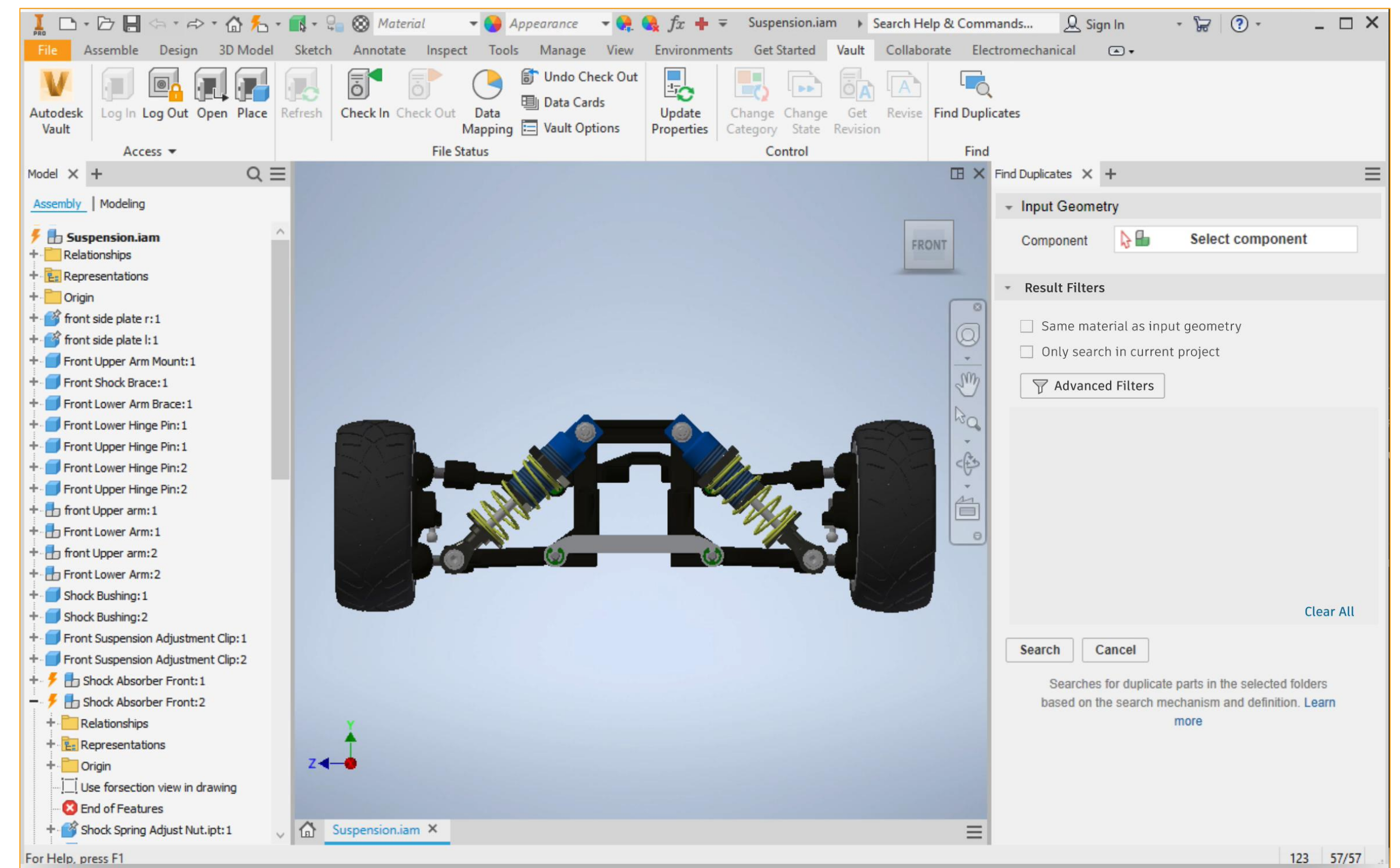
Combined Geometric Search & Filtering



Properties Filtering supports the Mechanical Engineer to find quickly the right part for replace workflow

- Advanced Search
- Exclude different Materials
- Identify the exact match
- Exclude mirror parts

The process can now be done before the replace workflow for all files within one group



Contributor & Consumer

Modern, Connected &
Insightful Experience



Mobile Experience



**Project Manager/
Shopfloor Worker**

On the shop Floor

- Reduce the amount of paper needed
- No need to go to a computer terminal to access data
- No need to type in part number to search for drawings if you have QR code if you are looking to create change requests

**Sales Engineer/
Product Manager**

At the customer Site

- Reduce the need to print off paper documents,
- Don't get caught without the right documentation,
- Feel confident that you are viewing correct, up to date information,
- Document engineering change requests incl. images

**Installation/ Service
Engineer**

In the field

- Reduce the need to print off paper documents
- No need to type in part number to search for drawings if you have QR code
- Don't get caught without the right documentation
- Record commissioning or service details

Vault Mobile App



IOS version 12 & higher (Release Preview)

Android version 8 & higher (Pilot)

Tablet and phone compatible

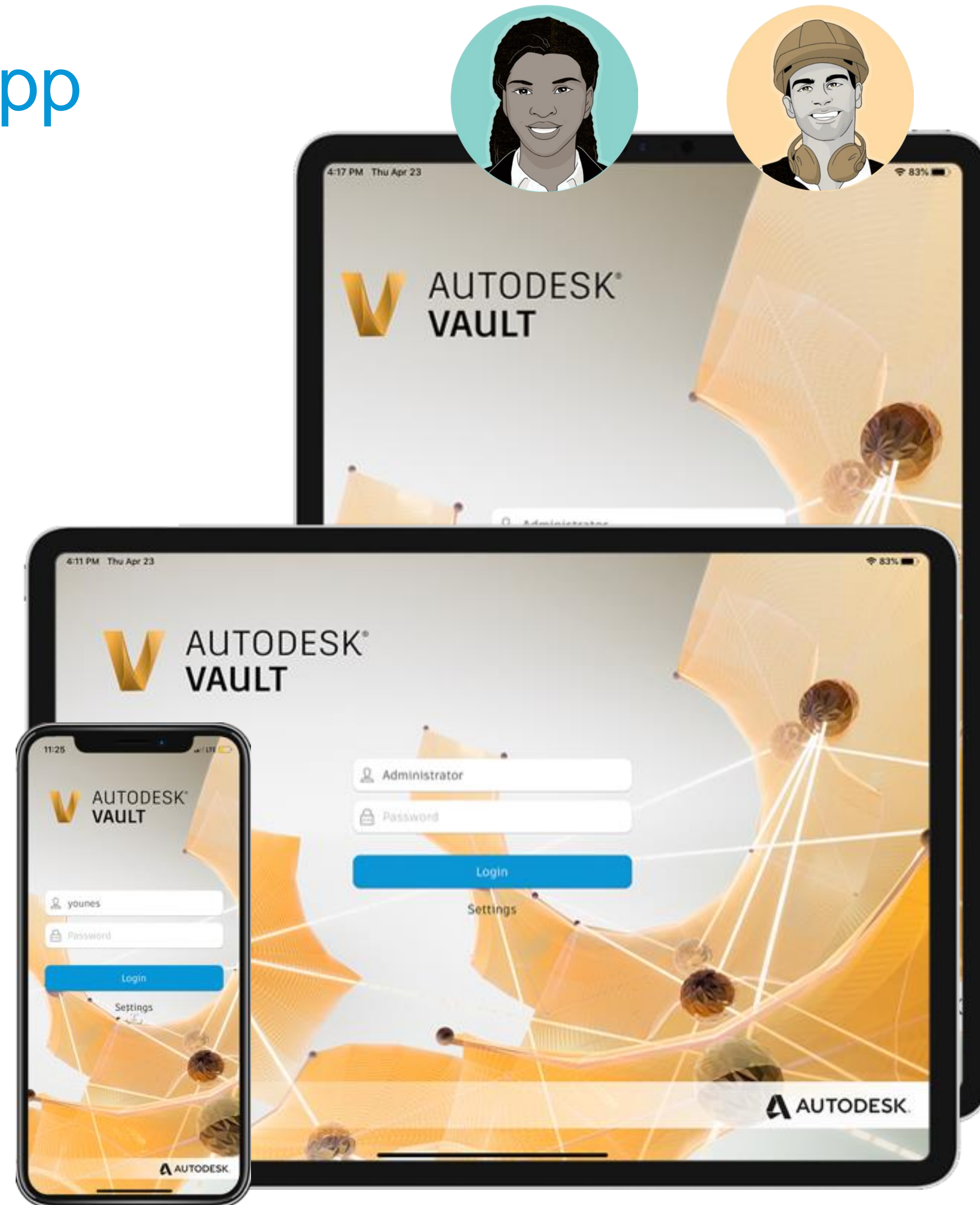
View 2D/3D designs

Check non-CAD files in and out

Review, approve, and sign documents

Perform QR, barcode, simple, and extended searches

Create and participate in change orders, and more



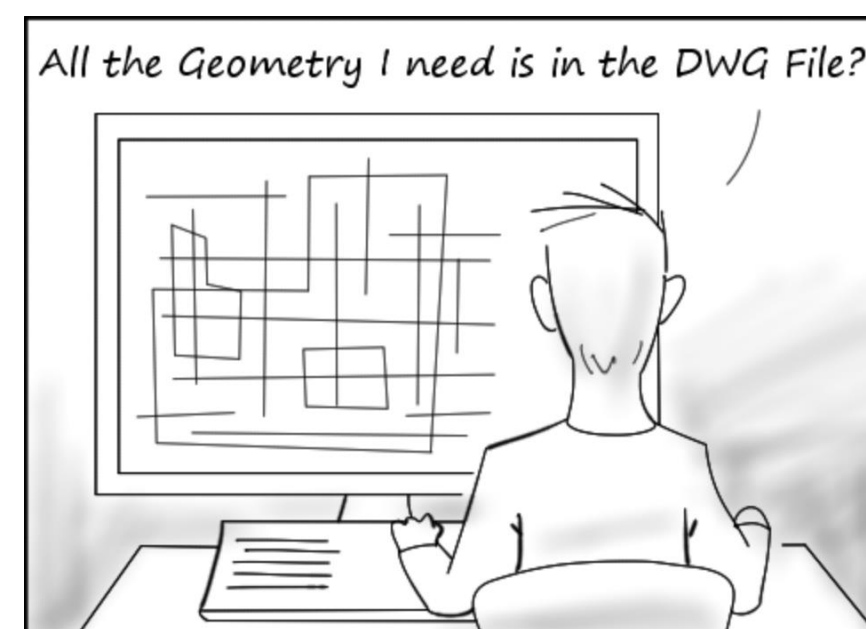
Consumer – Navigate & View



I can never find the docs or BOMs I need.
These project names and file names mean nothing to me. It's exhausting.

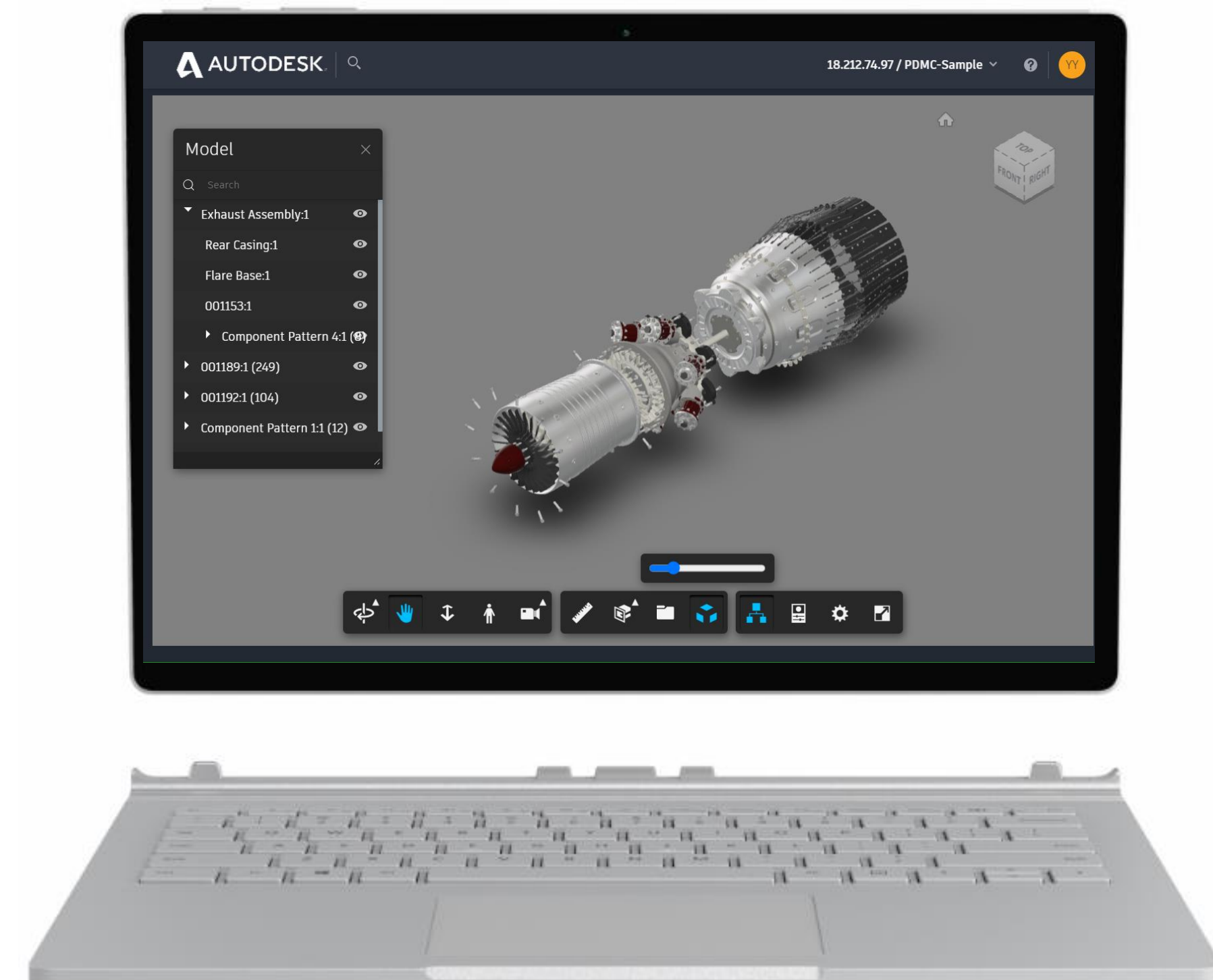
I'll have to check with engineering to get the data I need. It would be amazing to have better search and to be able to collaborate with engineering without walking over there and access the data on the go leveraging my mobile device

Field Engineer
Machine Shop Worker



Navigate,
Search,
View

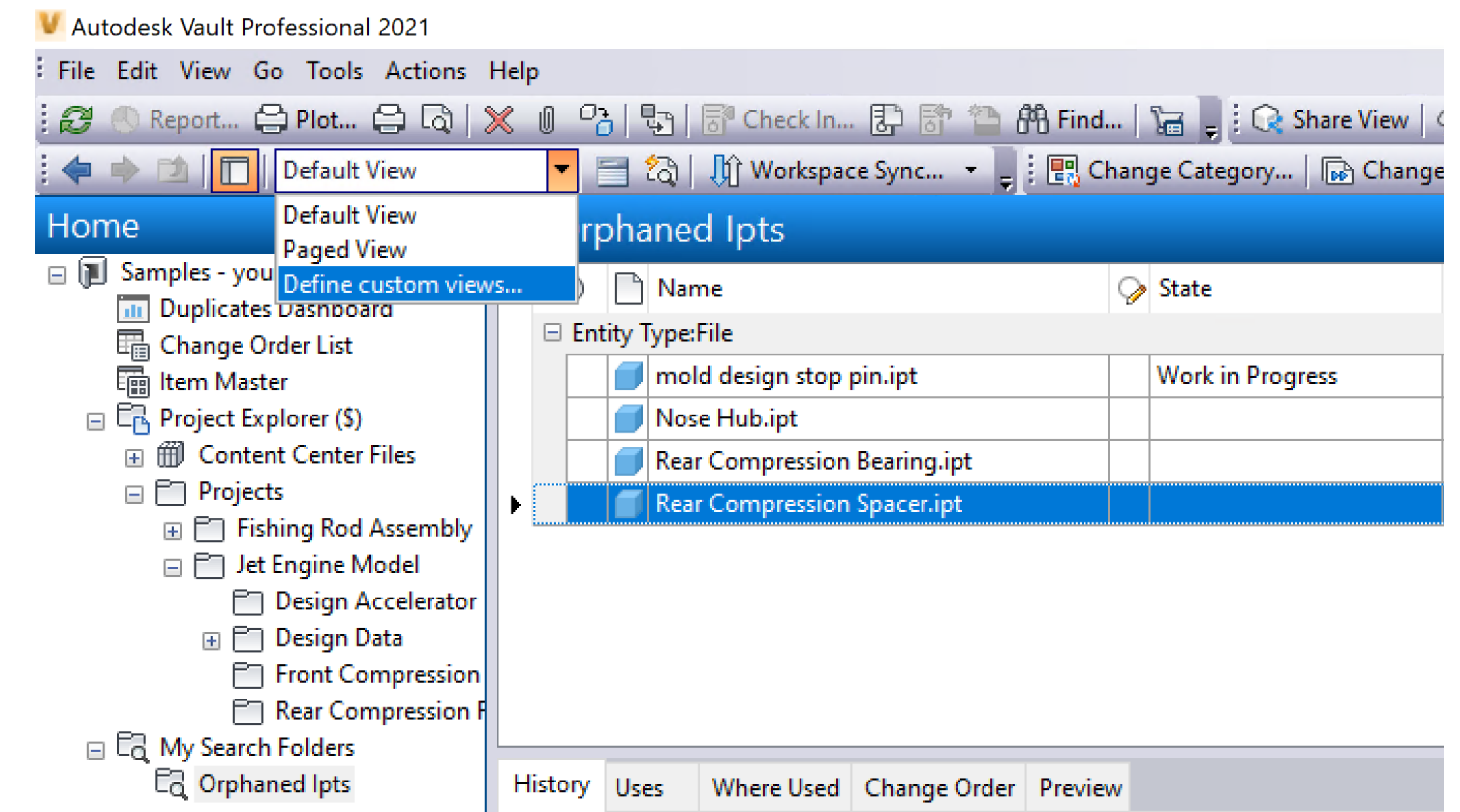
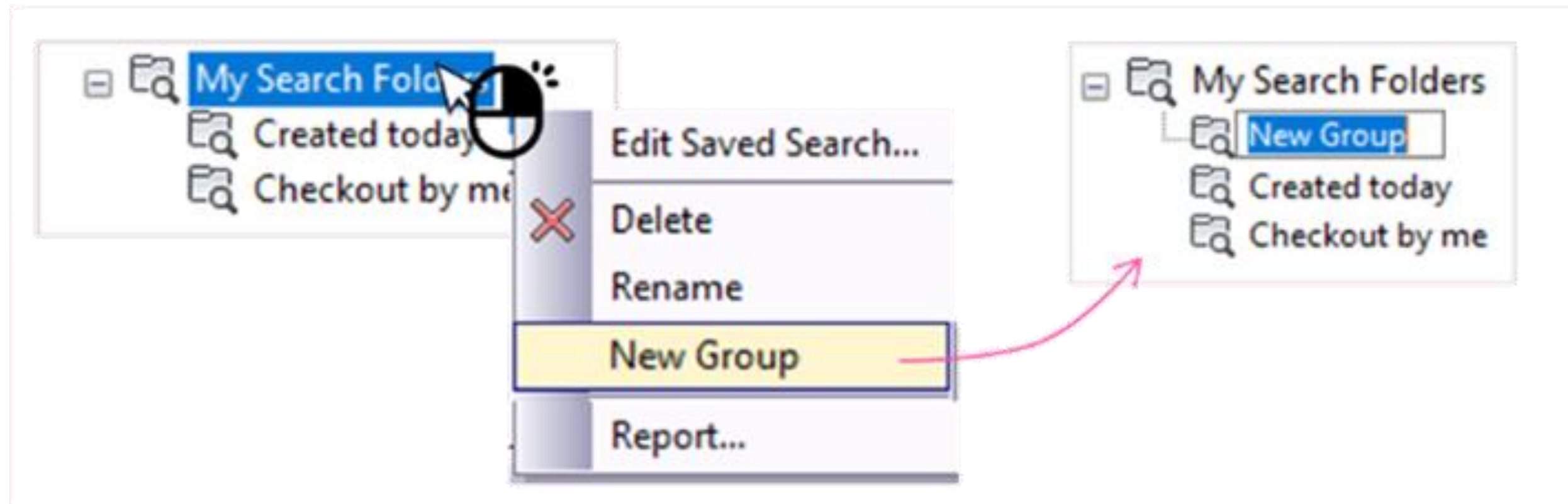
You can navigate and/or search in Vault for just about anything and take action right way to view the model



Saved Search Improvements



Manage & organize your Search Folders



Custom Views for "my Search Folders" like "Other Views"

Administrator

Modern, Connected &
Insightful Experience



Enhanced User & Group Management



Improvements to User and Group Management for Administrators

- Friendly Display Names
- User and Group Attributes
- Autodesk ID Authentication

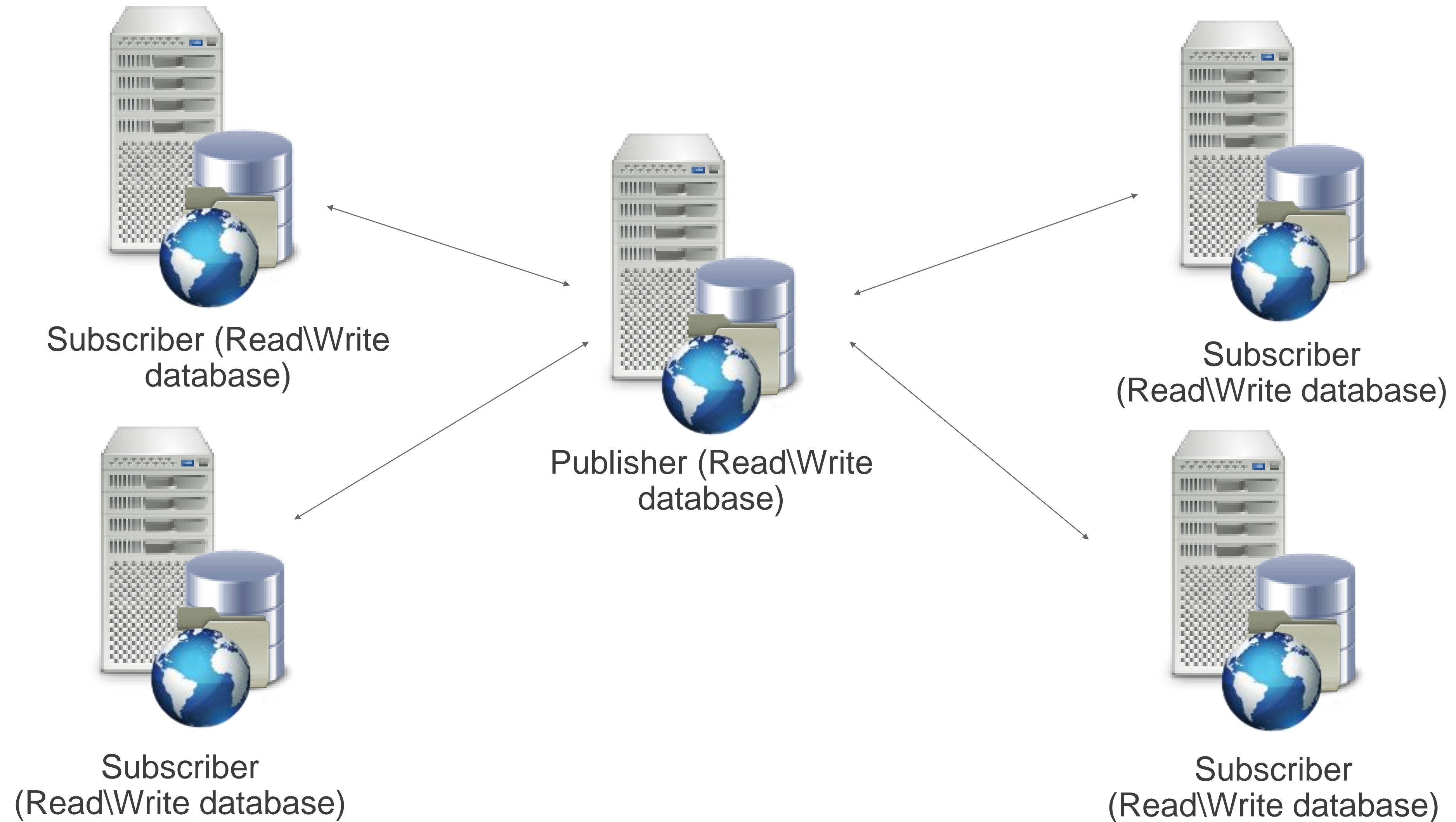
The 'User Profile' dialog box shows the configuration for a user named 'Joe Engineer'. It includes fields for Display Name, Email Alias, First Name, Last Name, Location, Title, Department, Telephone Number, and Comment. Below these are sections for Accounts, Roles, Vaults, and Groups, each with a list of associated items. An 'Enable user' checkbox is checked at the bottom.

Field	Value
Display Name	Joe Engineer
Email Alias	joe.engineer@autodesk.cm
First Name	Joe
Last Name	Engineer
Location	Munich
Title	Mechanical Engineer
Department	
Telephone Number	
Comment	
Accounts...	Vault Account, Autodesk ID
Roles...	Document Editor (Level 2), Document Consumer, Document Editor (Level 1)
Vaults...	AutodeskVault
Groups...	Mechanical Engineers
Enable user	<input checked="" type="checkbox"/>

The 'Log In' dialog box for 'AUTODESK VAULT' shows the authentication process. It includes fields for Authentication, User Name, Password, Server, and Vault. The 'Authentication' dropdown is set to 'Vault Account', and the 'User Name' dropdown is set to 'Autodesk ID'. The 'Server' is set to 'localhost' and the 'Vault' is set to 'AutodeskVault'. There is an 'Automatically log in next session' checkbox and buttons for OK, Cancel, Help, and a back arrow.

Field	Value
Authentication	Vault Account
User Name	Autodesk ID
Password	
Server	localhost
Vault	AutodeskVault
Automatically log in next session	<input type="checkbox"/>

Full Replication Today

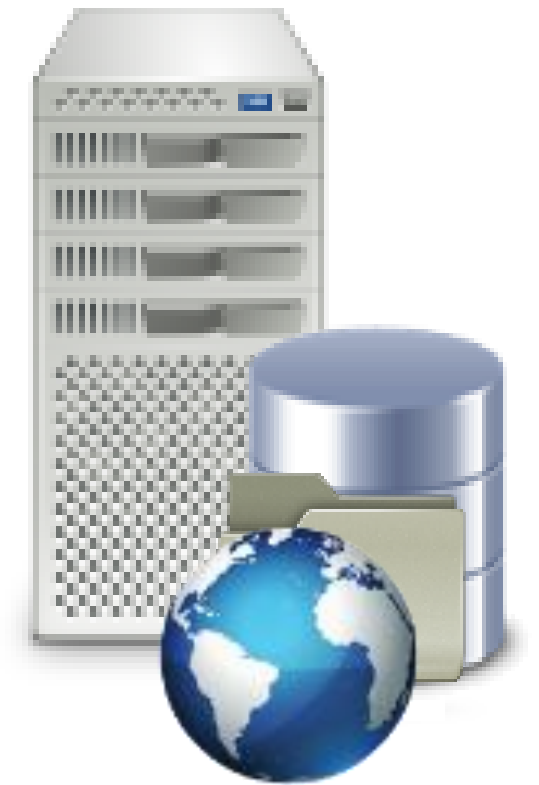


Replication Technology Enhancements

- Improve replication stability & reliability
- 98% of operations are Reads
- File Replication unchanged
- Eliminate the need for object Ownership



Primary
(Read\Write
database)



Secondary
(Read database)



Secondary
(Read database)



Recap: Modern, Connected & Insightful Experience

Author

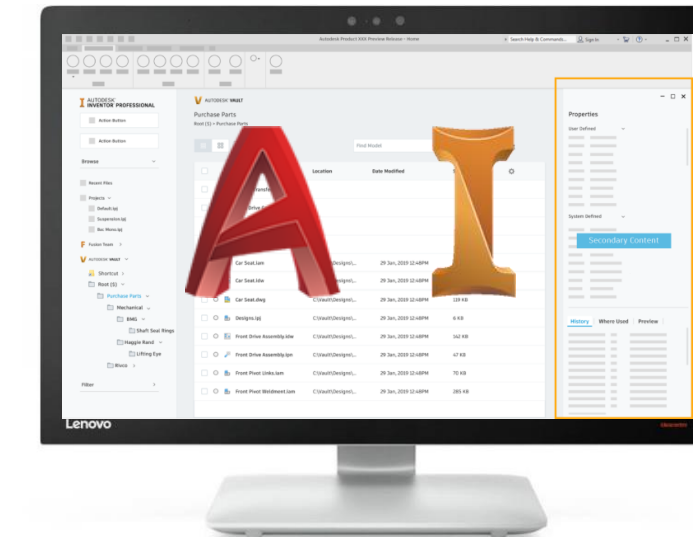
*InCAD Experience
Design Data Creation*



Show details, Model state support

Inv-Revit Interop, exclude path

Duplicate search and much more



Contributor

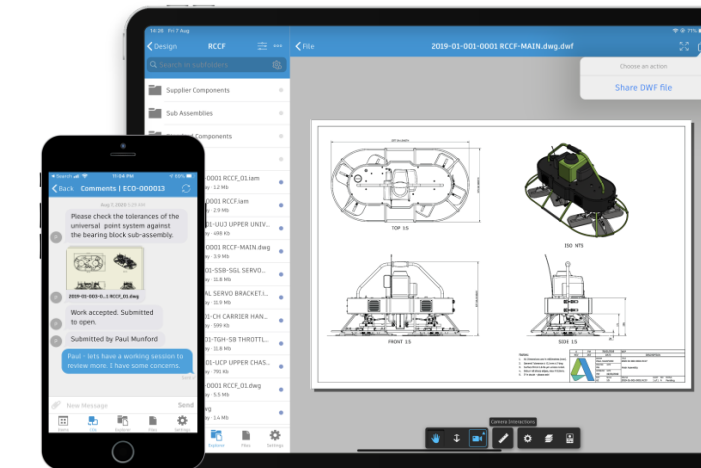
*Desktop & Mobile Experience
Process workflows*



View 2D & 3D, QR code search,

Release process

Change management & much more



Consumer

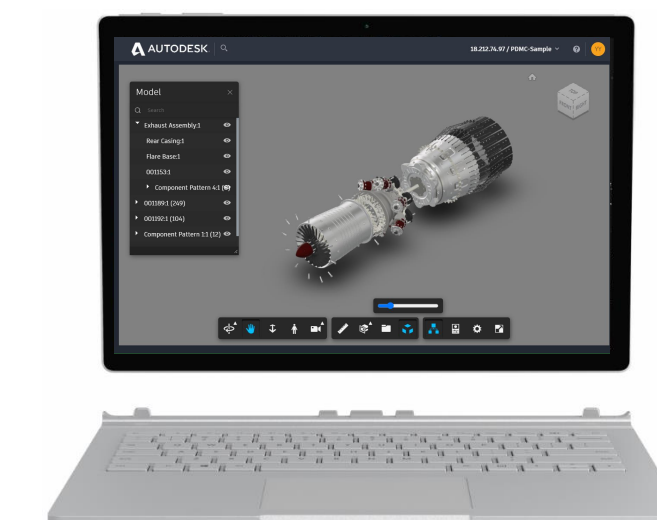
*Browser Experience
Navigate & View*



Zero deployment

Modern experience

Navigate /& View 2D & 3D data



Administrator

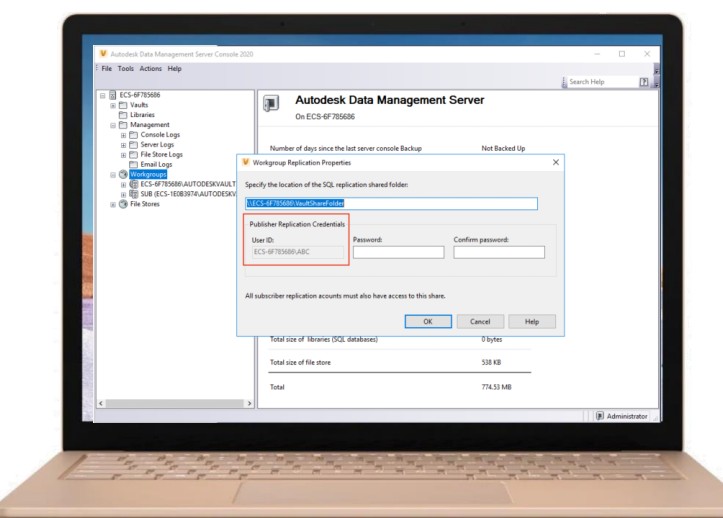
*Desktop, Browser &
Mobile Experience*



User & Group management

Replication Technology

Vault Cloud Connect





Autodesk and the Autodesk logo are registered trademarks or trademarks of Autodesk, Inc., and/or its subsidiaries and/or affiliates in the USA and/or other countries. All other brand names, product names, or trademarks belong to their respective holders. Autodesk reserves the right to alter product and services offerings, and specifications and pricing at any time without notice, and is not responsible for typographical or graphical errors that may appear in this document.

© 2020 Autodesk. All rights reserved.