

# Shorten Lead Times by Integrating Design Automation in Downstream Processes

**Peter Van Avondt & Sven Dickmans**

Technical Sales Specialists | Autodesk EMEA



# WELCOME



**PETER VAN AVONDT**

Technical Sales Specialist – Data Management  
Autodesk Northern Europe

📞 +32 498 16 55 24

✉️ [Peter.van.avondt@autodesk.com](mailto:Peter.van.avondt@autodesk.com)

🌐 [linkedin.com/in/petervanavondt](https://www.linkedin.com/in/petervanavondt)



**SVEN DICKMANS**

Senior Fusion Lifecycle Specialist  
Autodesk Technical Sales

📞 +49 151 62 82 15 81

✉️ [sven.dickmans@autodesk.com](mailto:sven.dickmans@autodesk.com)

🌐 [linkedin.com/in/sven-dickmans](https://www.linkedin.com/in/sven-dickmans)







# CLOUD DATA & PROCESS MANAGEMENT

Drives efficiency by process driven  
collaboration and single source of truth







# CLOUD DESIGN AUTOMATION SERVICES

Build online workflows and  
experiences around your design data



# ENDLESS POSSIBILITIES





# PRODUCT CATALOG

---

Browse product portfolio being  
managed in Fusion Lifecycle and  
retrieve product details





# ONLINE PRODUCT CONFIGURATOR

---

Derive product configuration of interest  
in Product Catalog by using iLogic rules





# VARIANT MANAGEMENT

---

Storage of derived  
configurations for reuse and  
statistical analysis





# RFO

## PROCESSES

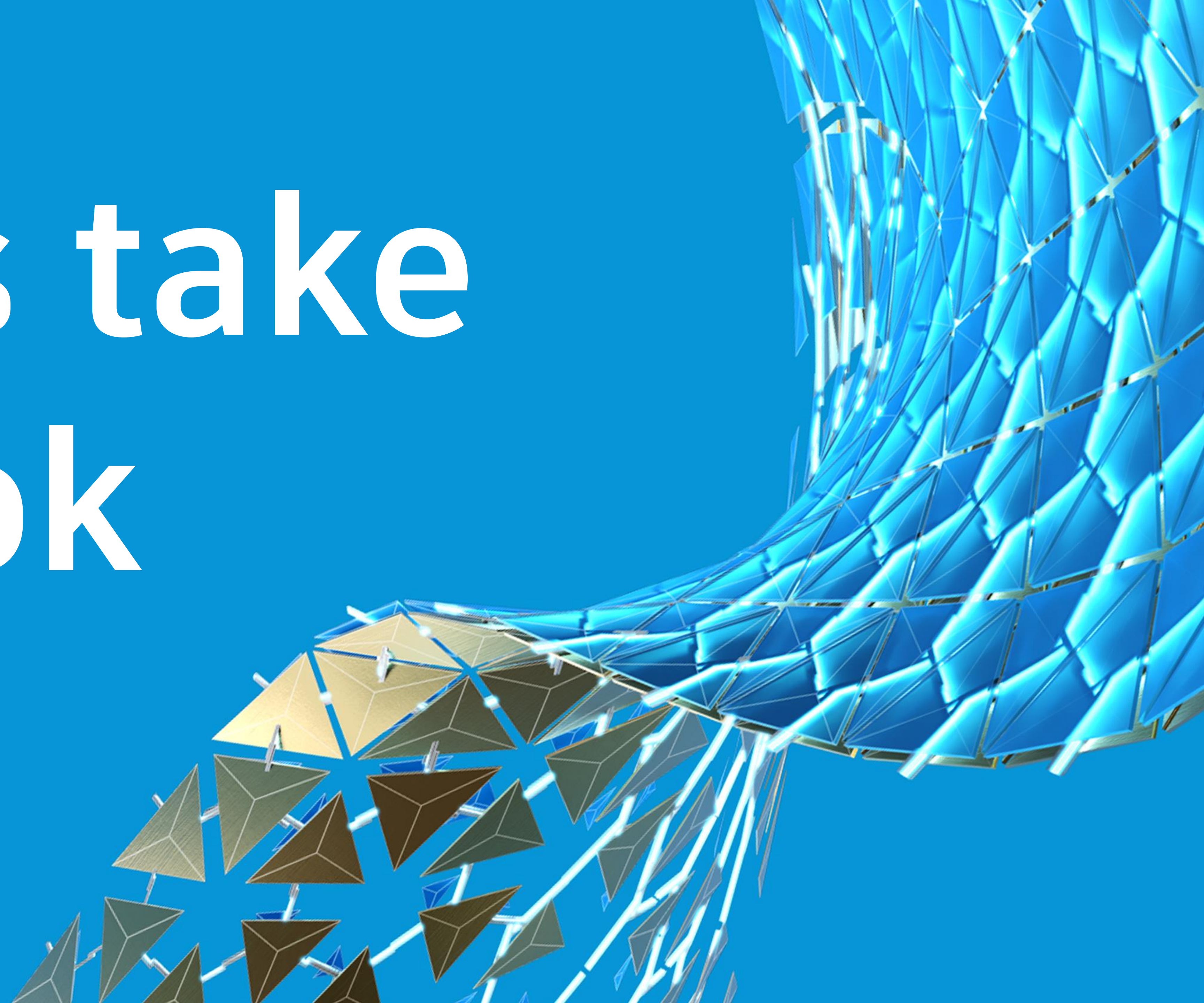
---

Online processing of Requests  
for quote with seamless  
handover of product  
configuration





Let's take  
a look









# ENDLESS POSSIBILITIES





# CLOUD DATA & PROCESS MANAGEMENT

Drives efficiency by process driven  
collaboration and single source of truth





# CLOUD DATA & PROCESS MANAGEMENT

Drives efficiency by process driven  
collaboration and single source of truth



Product Data



New Product Introduction



Bill of Materials



Change Management



Quality Management



External Collaboration



# SMART ONLINE DATA

Configurable forms enabling  
concurrent changes,  
validations, formulas,  
highlighting, filtering, access  
control and full traceability

Make product data online for  
everyone on any platform

Header (1 of 4) ^

ID0008

TypeOrder

TitlePower supply components

SupplierIntersil

Creation Date30.07.2019

Status

Review

InstructionsThe package has been processed by the supplier. Please review the given delivery and close this process afterwards if expectations are met.

Line Item Counters (2 of 4) i ^

	Ratio	New	Modified	Repeated	Total
Item Count	<div></div>	3	1	4	8

FTP Details (3 of 4) i ^

FTP Link

ftp://download.autodesk.com/packages/arrow/0003.zip

FTP Username

sup-arrow

FTP Password

pass123

Contacts (4 of 4) ^

	Supplier	Requestor
Contact Person	Meyers, Marc	Dickmans, Sven
Phone	+49 (0) 7056 77 20 934	+49 (0) 151 62 82 15 81
Mail	mike@fusion.rocks	sven.dickmans@autodesk.com
Address	Schickardstr. 10, 56831 Bielefeld	Aidenbachstr. 56, 81379 München

Owner and Change Summary ^

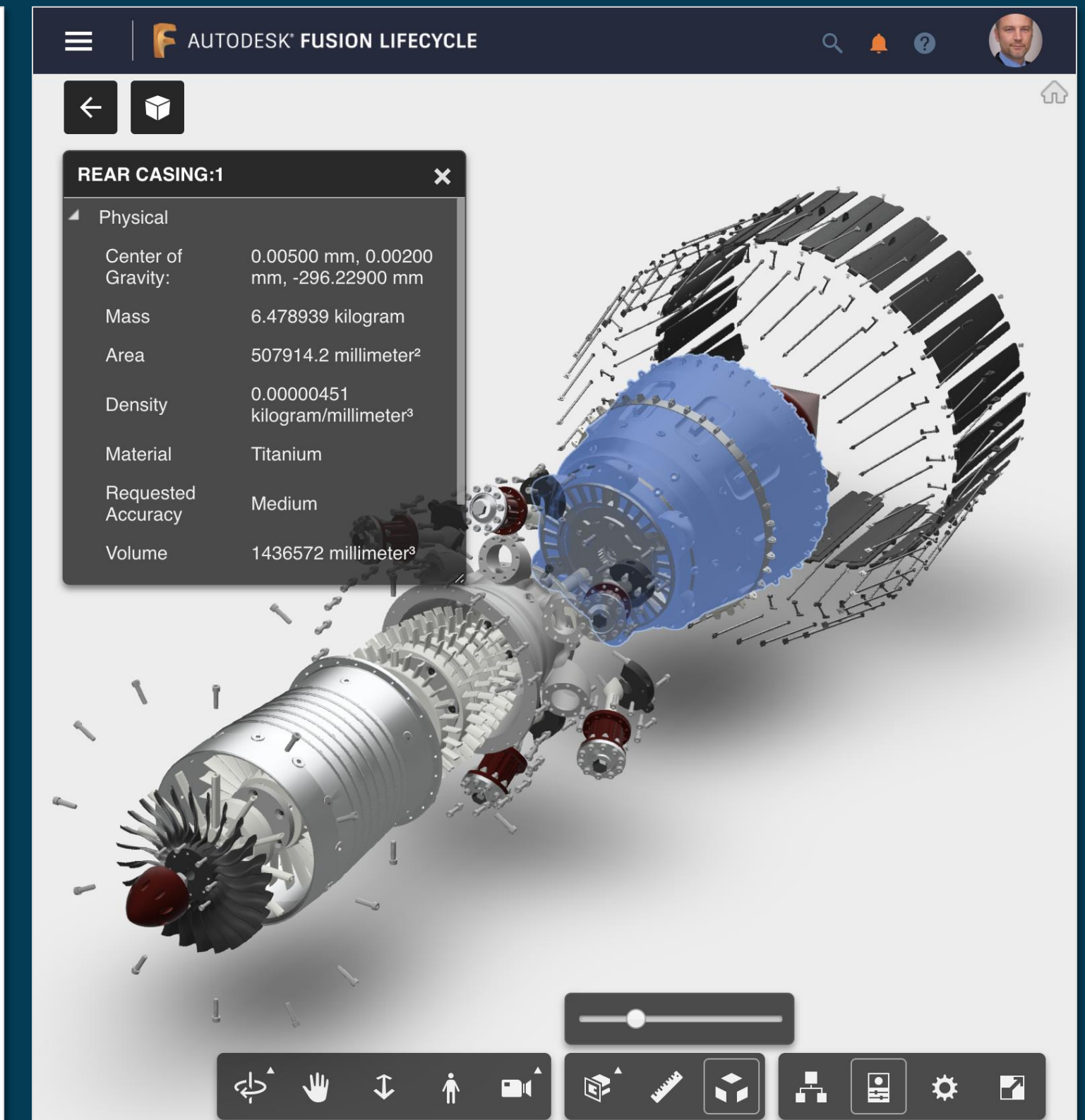
Change Summary

Created on 31.07.2019 01:12 PM

By Sven Dickmans

Last modified on 31.07.2019 05:36 PM

By Sven Dickmans



Basic (1 of 10) ^

Number	P-000004
Title	Project 4
Description	
Start Date	18.03.2020
Template	Standard
Assessment	★★★★

Details (2 of 10) v

KPIs (3 of 10) ^

	Progress	Budget Consumption	Status	Days to next Gate
Project KPIs	<div>G1G2G3G4G5</div>	<div>22%</div>	<div>S R B R</div>	103

Schedule (4 of 10) ^

	Specification	Concept	Development	Validation	Production
Target Start	18.03.2020	28.05.2020	07.07.2020	28.07.2020	18.08.2020
Target Completion Date	21.05.2020	29.06.2020	17.07.2020	07.08.2020	28.08.2020
Target Duration	64 (days)	32 (days)	10 (days)	10 (days)	10 (days)

Financial Impact Assessment (8 of 10)

	Cost Impact (+/-)
Labor	300 (\$)
Material	200 (\$)
Tooling	0 (\$)
Sourcing	200 (\$)
TOTAL	700 (\$)

Efforts Assessment (9 of 10)

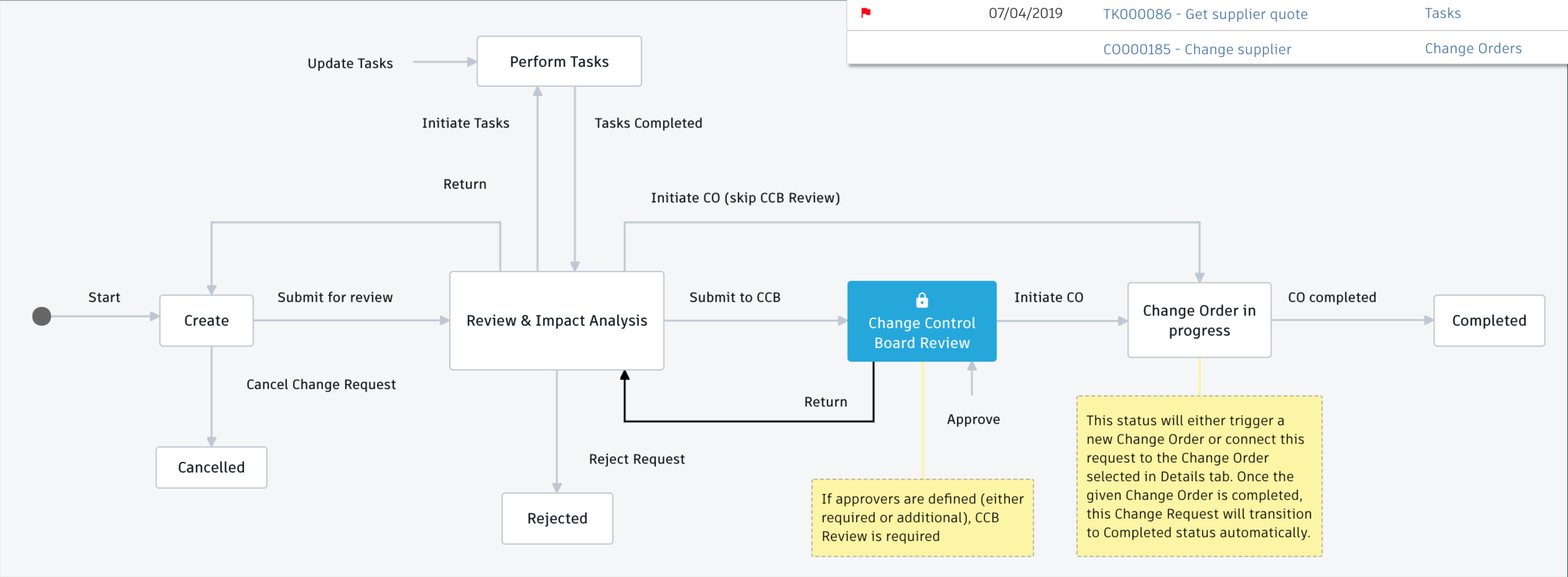
	Efforts
Mechanical Engineering	4 (hours)
Electrical Engineering	2 (hours)
Software Engineering	0 (hours)
Preproduction	2 (hours)
Production	0 (hours)
TOTAL	8 (hours)



# WORKFLOWS TO GUIDE & TRACK

Define standardised process flows, responsibilities & notifications to increase business process efficiency.

My Outstanding Work								Last updated: 10/06/2020 04:04 PM	
			Due Date	Item Name	Workspace	State	State Set On	State Set By	
			07/06/2020	TK000215 - Customer requirements	Tasks	[2] Assigned	07/08/2020	Peter Van Avondt	
			07/08/2020	DRT0143 - Reduce Material	Design Review Tasks	Assigned	07/07/2020	Peter Van Avondt	
			04/01/2020	DRT0138 - Alternate Components o...	Design Review Tasks	Assigned	04/01/2020	Demir Ali	
			11/21/2019	DRT0088 - Material Change to Plas...	Design Review Tasks	Assigned	07/11/2019	Lee Worton	
			07/19/2019	DRT0086 - Check Interference	Design Review Tasks	Assigned	07/11/2019	Lee Worton	
			07/04/2019	TK000086 - Get supplier quote	Tasks	[4] Review	06/13/2019	Job User	
				CO000185 - Change supplier	Change Orders	Create	06/04/2019	Sven Dickmans	



Number	Progress ↓			
CR-000012	NEW	REV	CCB	CO
CR-000002	NEW	REV	CCB	CO
CR-000010	NEW	REV	CCB	CO
CR-000004	NEW	REV	CCB	CO
CR-000006	NEW	REV	CCB	CO
CR-000009	NEW	REV	CCB	CO
CR-000011	NEW	REV	CCB	CO
CR-000005	NEW	REV	CCB	CO
CR-000001	NEW	REV	CCB	CO
CR-000003	NEW	REV	CCB	CO

# REAL TIME STATUS

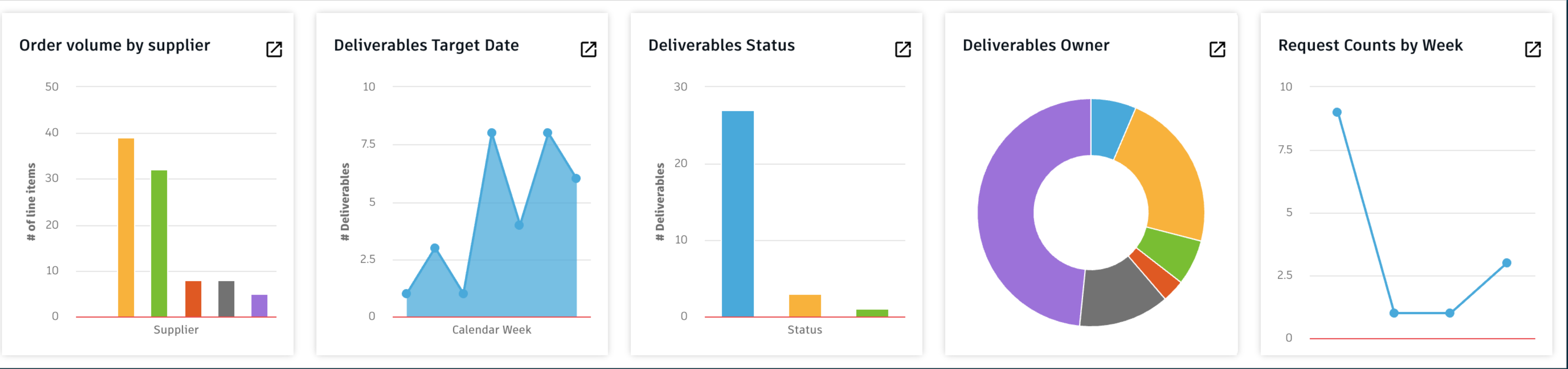
Identify & resolve bottlenecks and delays in time by user defined dashboards

Home > Tasks 

+

In Work (8) ▾

Item Descriptor	Progress Bar ▾	Flag ▾	Last Upda... ▾	Days Remaining
TK-0106 - Request drawing update by supplier	90%	...	14.01.2019	2
TK-0112 - Validate new customer requirement	80%	.	14.01.2019	16
TK-0116 - Provide Costing	75%	...	01.03.2019	-8
TK-0111 - Design Review	75%	...	14.01.2019	24
TK-0119 - Concept Design	25%	..	14.01.2019	24
TK-0199 - Electronics	0%	?		0
TK-0201 - Documentation	0%	?		21
TK-0204 - Provide Technical Specification	0%	?		-522









A large orange ABB robotic arm is the central focus, positioned in a laboratory or workshop. The arm has "ABB" and "MAD LAB" markings. In the background, a person is standing near some equipment. The scene is dimly lit with a blueish tint.

# FLEXIBLE

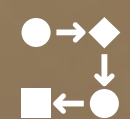
The system adapts to you, not  
the other way around



# FLEXIBLE



Workspaces



Graphic Workflows



Access Permission



Forms



Notifications



Print Views



Number schemas



Validations



Revision Control





# CLOUD DESIGN AUTOMATION SERVICES

Build online workflows and  
experiences around your design data



Data Management



BIM360



Authentication



Design Automation



Reality Capture



Model Derivative



Token Flex



Webhooks



Viewer



# CLOUD DESIGN AUTOMATION SERVICES

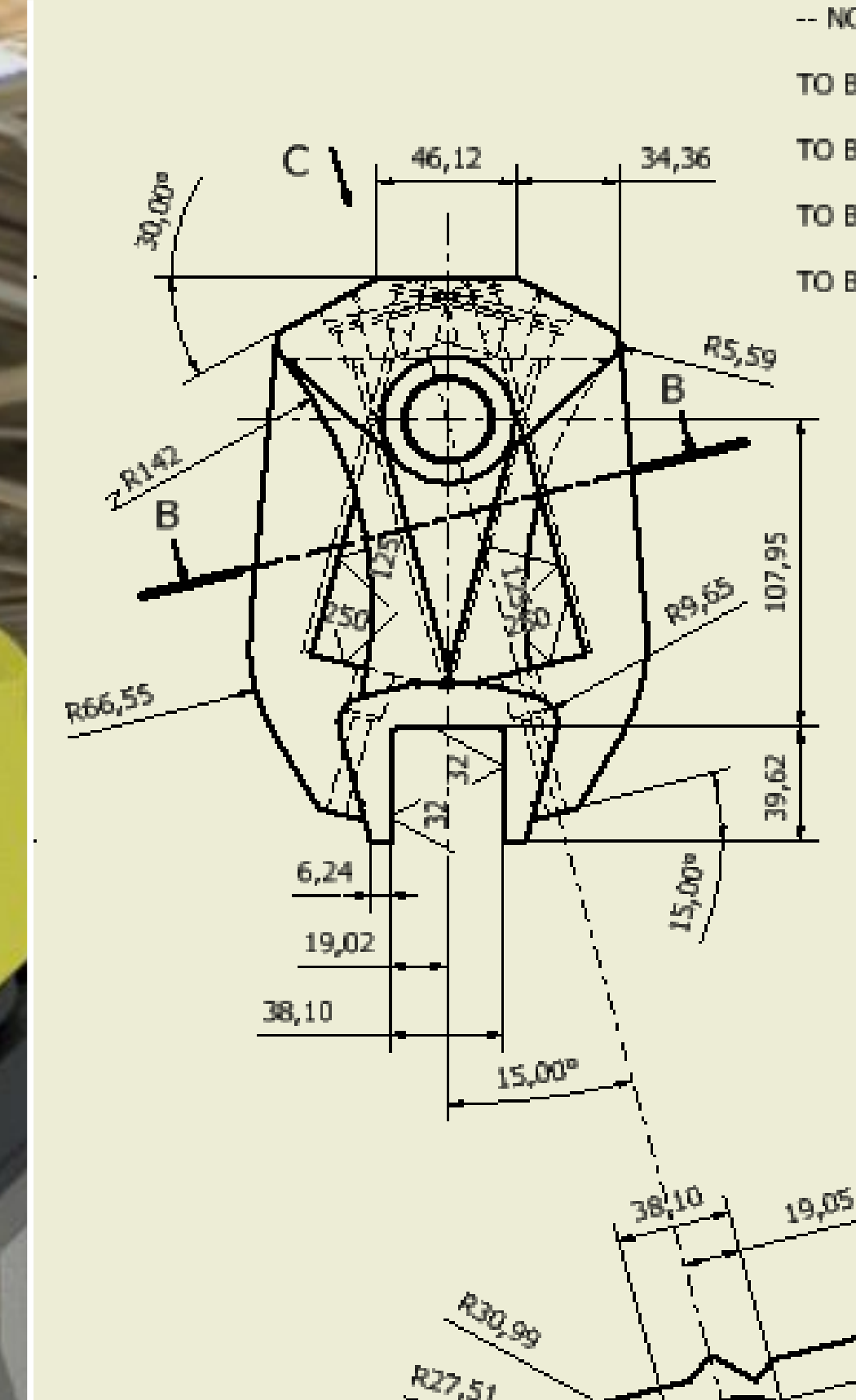
Build online workflows and  
experiences around your design data





AUTODESK  
FORGE®

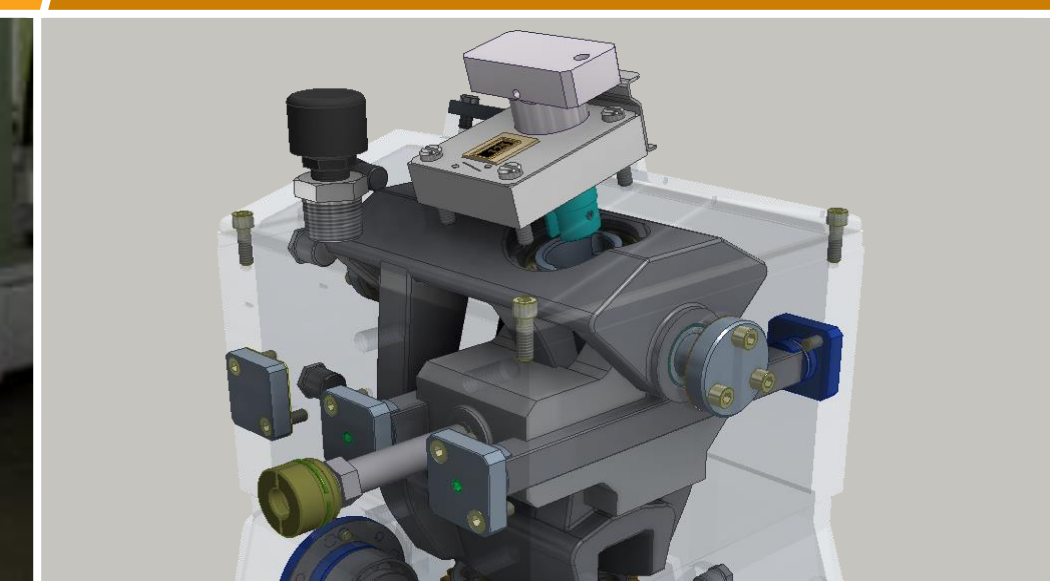
# DESIGN AUTOMATION



# CONFIGURE

# EXPORT

# GENERATE

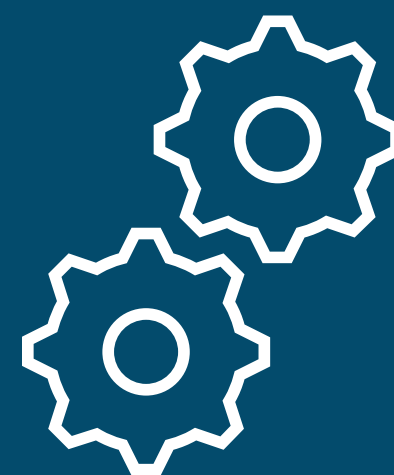






AUTODESK  
**FORGE**<sup>®</sup>

DESIGN  
AUTOMATION



# CAD Engines

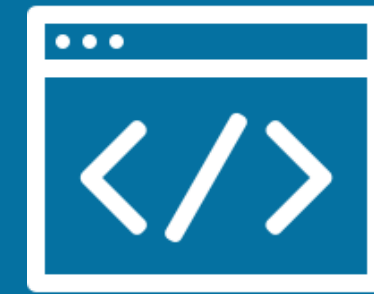


Your CAD engine running in the  
cloud as a Forge service.



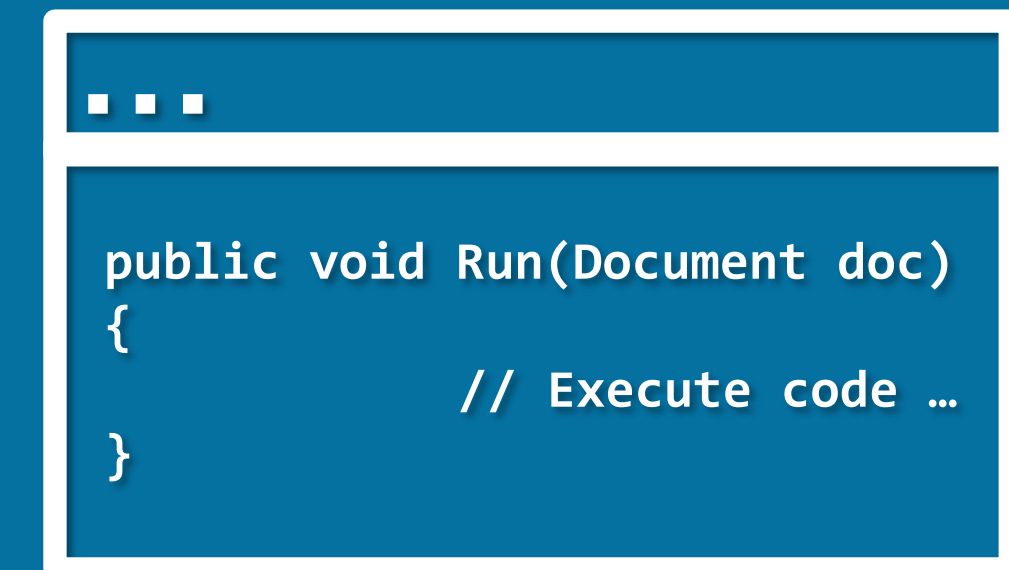
AUTODESK  
**FORGE**<sup>®</sup>

DESIGN  
AUTOMATION



# App Bundles

Custom plugin or script  
to be executed on CAD  
documents



## CAD Engines





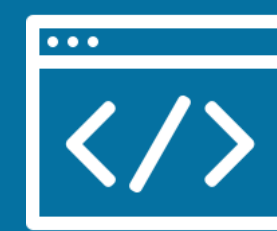
AUTODESK  
**FORGE**<sup>®</sup>

DESIGN  
AUTOMATION



# Activities

Specify actions that can be executed using a specified engine and app bundle.



## App Bundles



## CAD Engines



AUTODESK  
**FORGE**<sup>®</sup>

DESIGN  
AUTOMATION

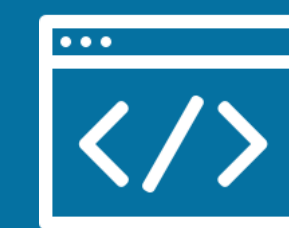


Work  
Items

Execute actions on  
the input files, using  
specific inputs and  
generating the  
requested output  
files.



Activities



App Bundles



CAD Engines





AUTODESK  
**FORGE**<sup>®</sup>

DESIGN  
AUTOMATION



Work  
Items



Request 1



Response 1



Request 2



Request 3



Activities



App Bundles



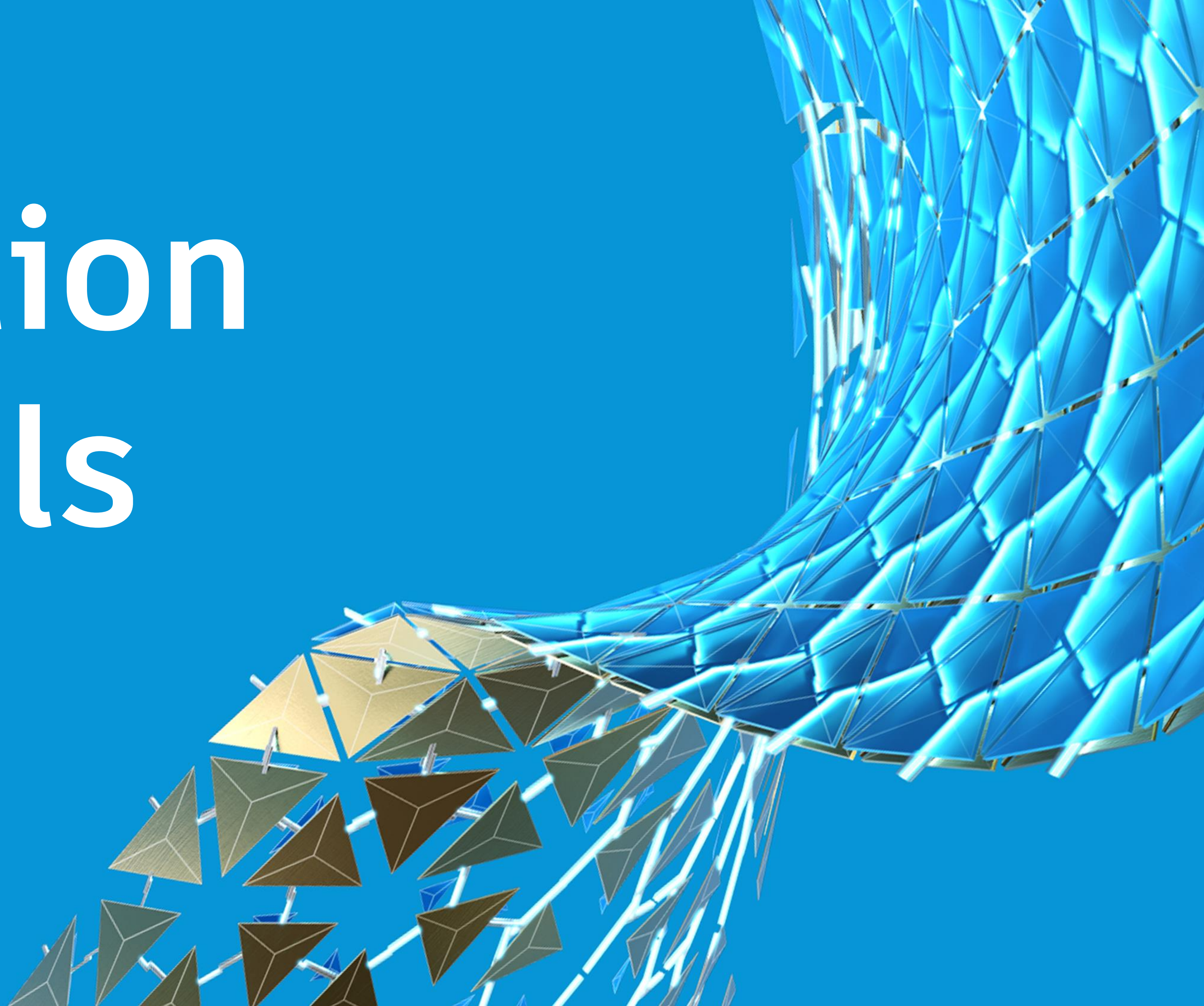
CAD Engines







# Solution Details





# PRODUCT CATALOG

---

Browse product portfolio being  
managed in Fusion Lifecycle and  
retrieve product details





# PRODUCT CATALOG

---



Authentication



Data  
Management



Viewer



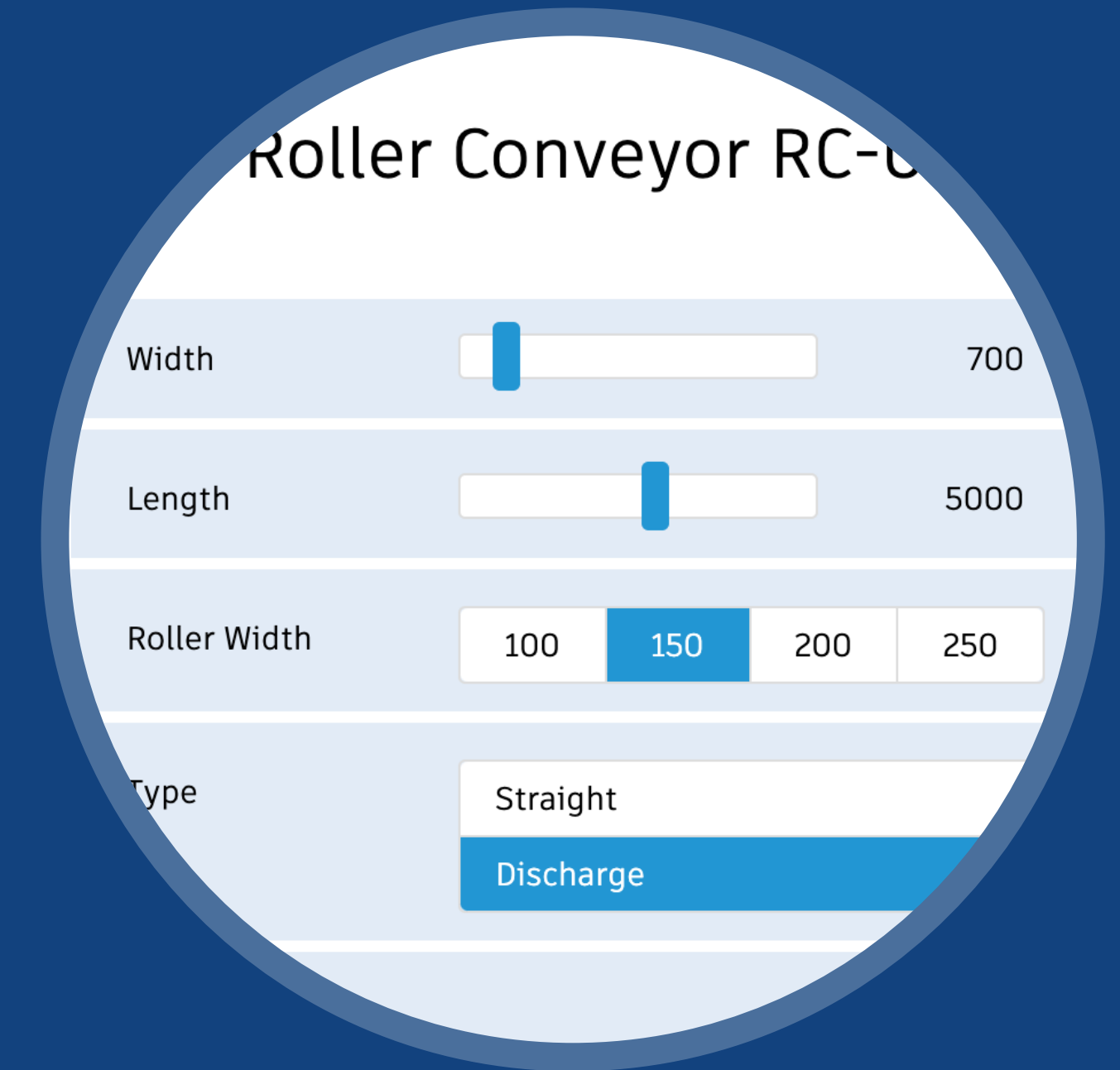
Product Data



# ONLINE PRODUCT CONFIGURATOR

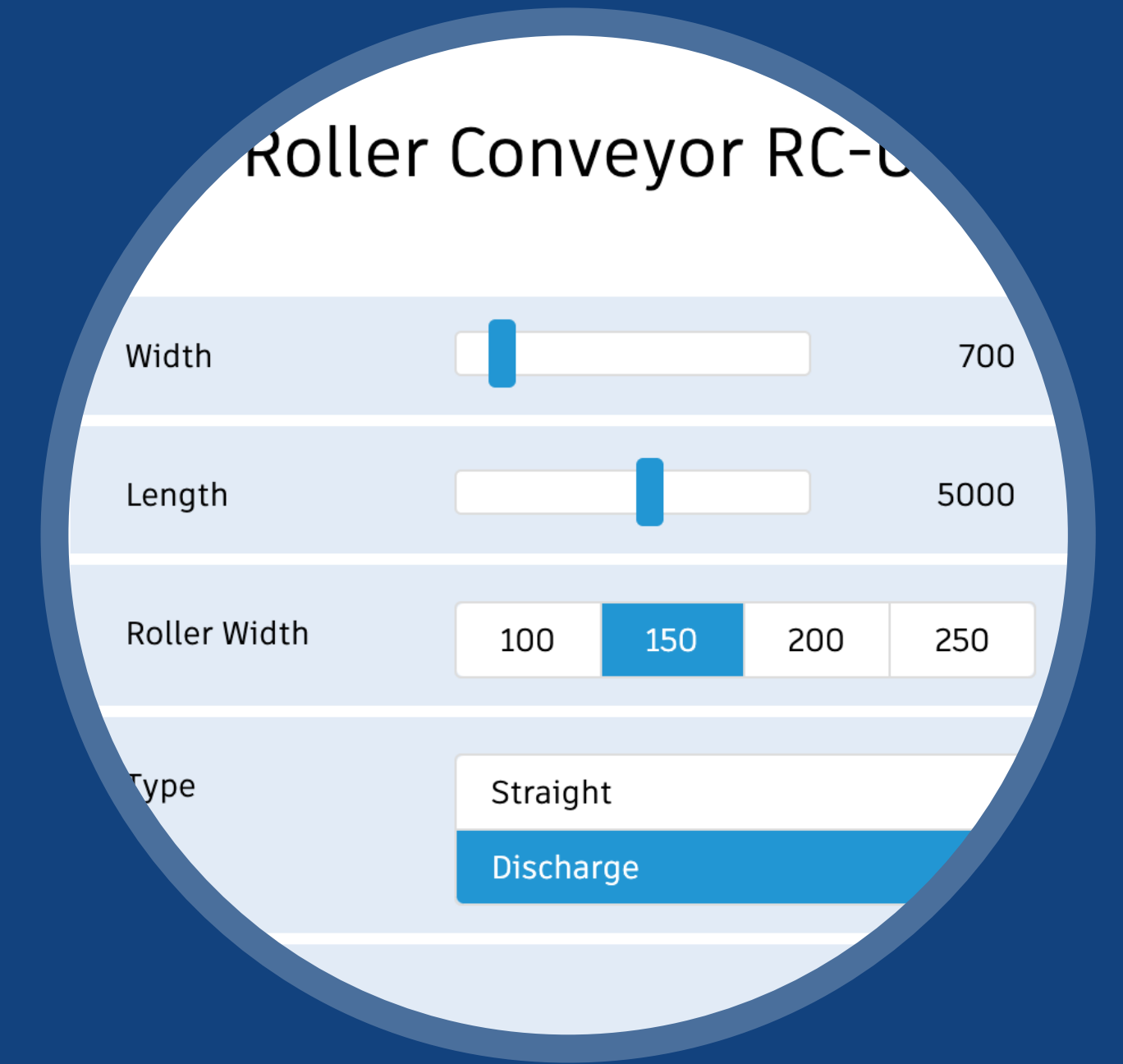
---

Derive product configuration of interest  
in Product Catalog by using iLogic rules





# ONLINE PRODUCT CONFIGURATOR



Authentication



Data  
Management



Model Derivative



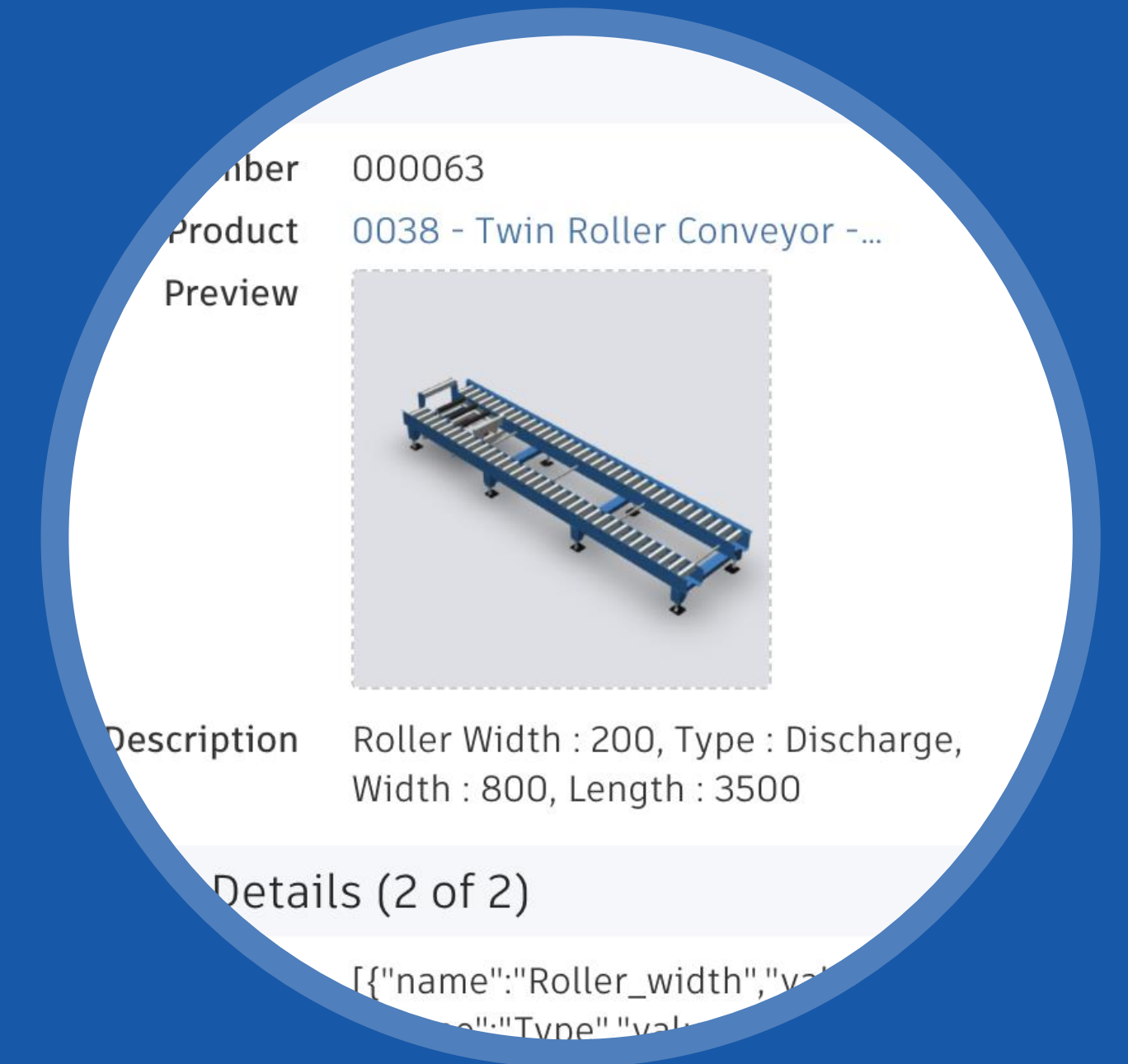
Design  
Automation



# VARIANT MANAGEMENT

---

Storage of derived  
configurations for reuse and  
statistical analysis





# VARIANT MANAGEMENT

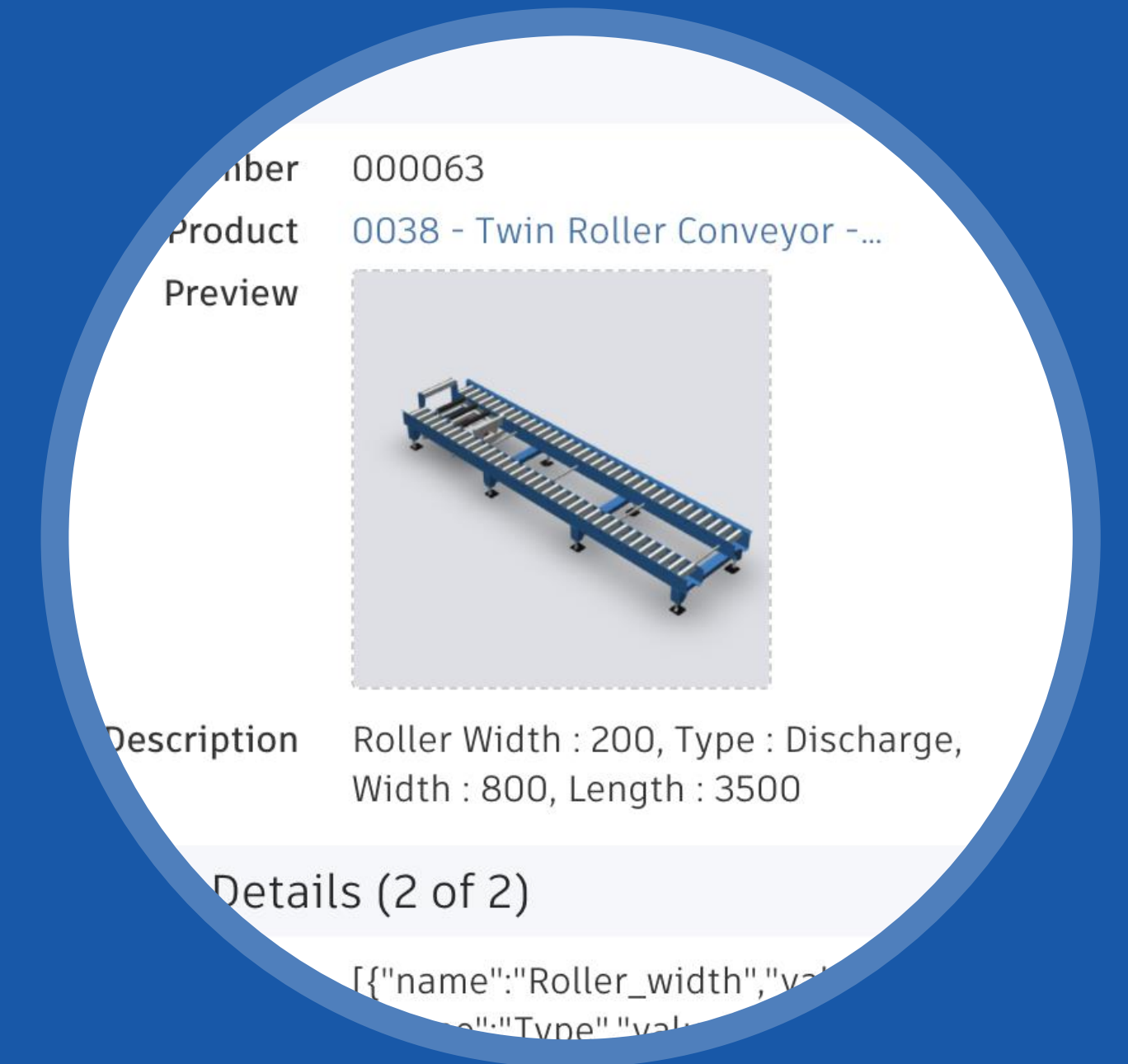
---



Authentication



Product Data





# RFO

## PROCESSES

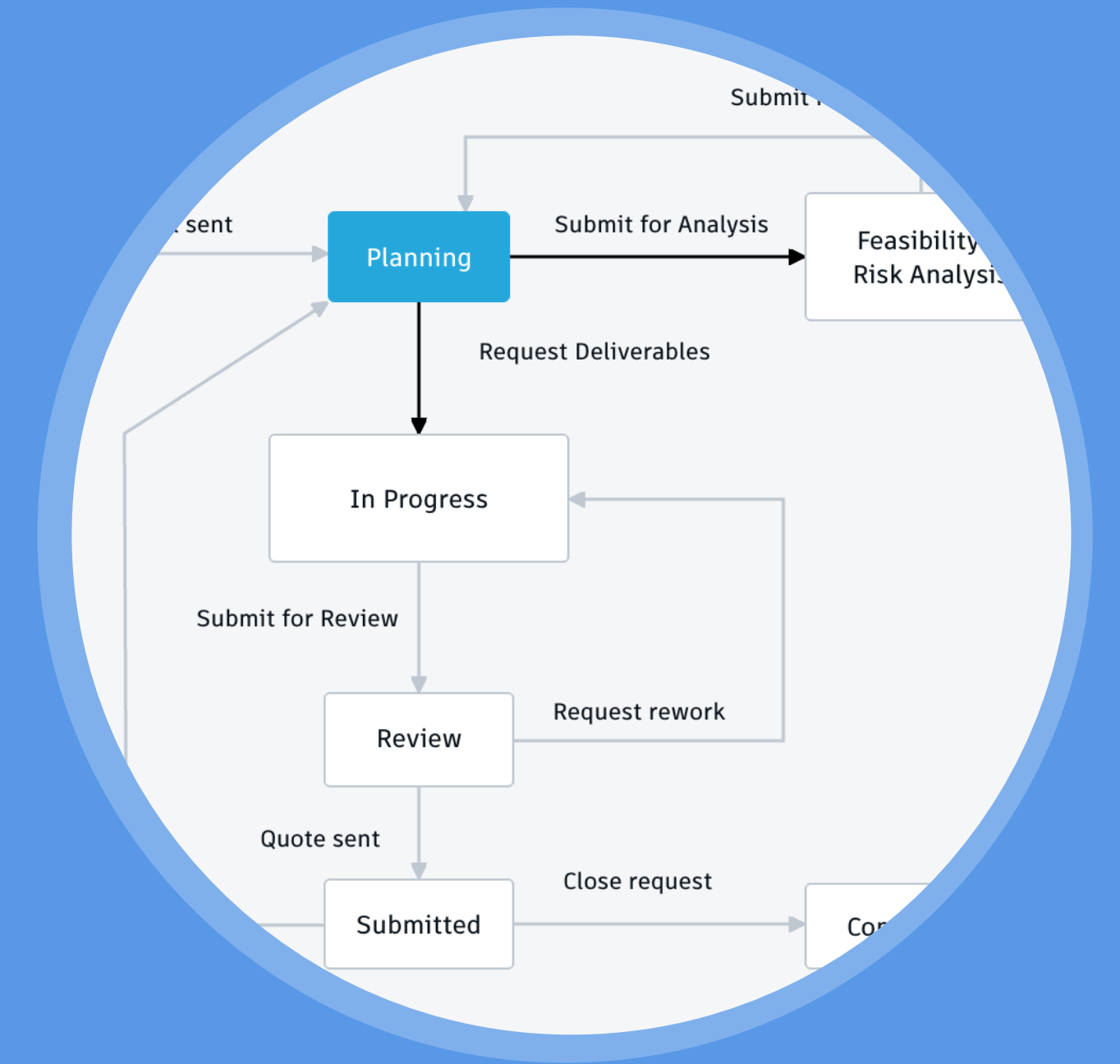
---

Online processing of Requests  
for quote with seamless  
handover of product  
configuration



# RFO PROCESSES

---



Authentication



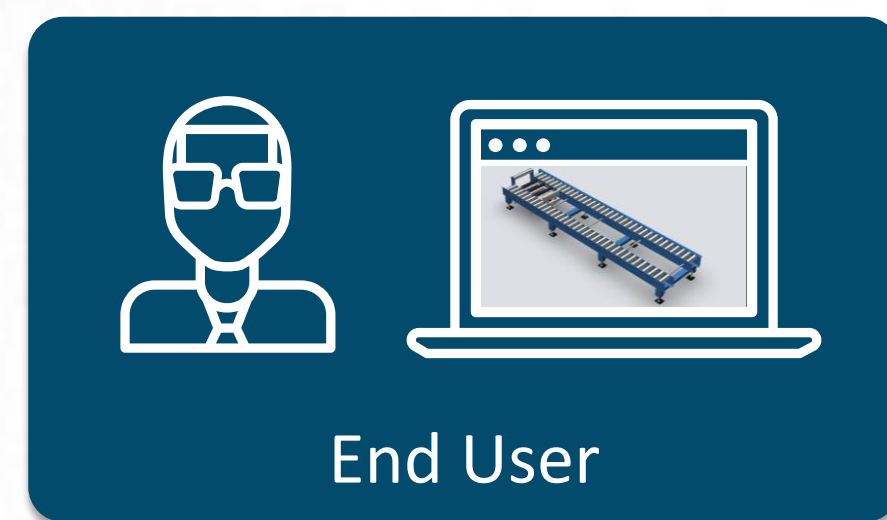
Requests for  
Quote

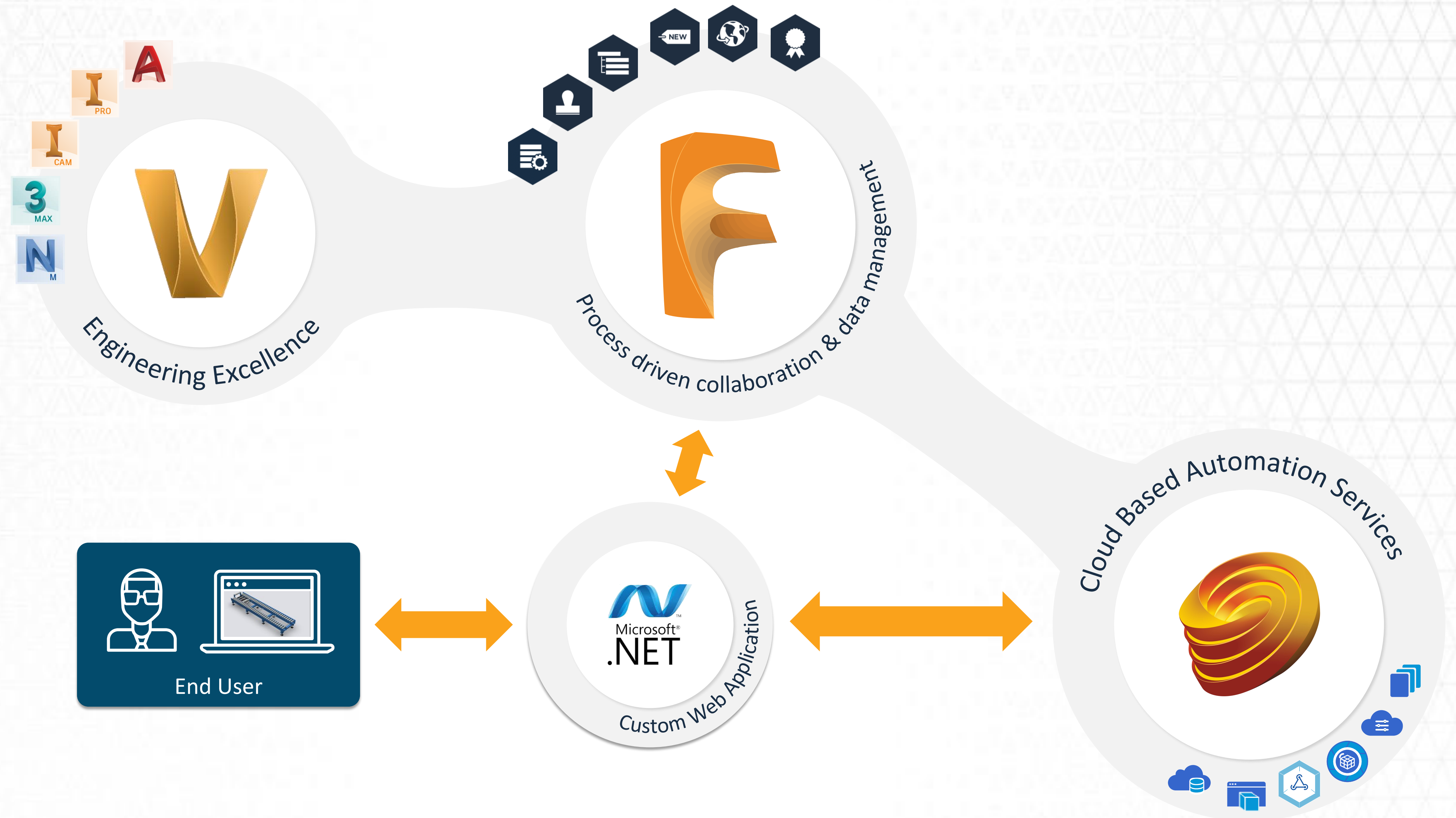




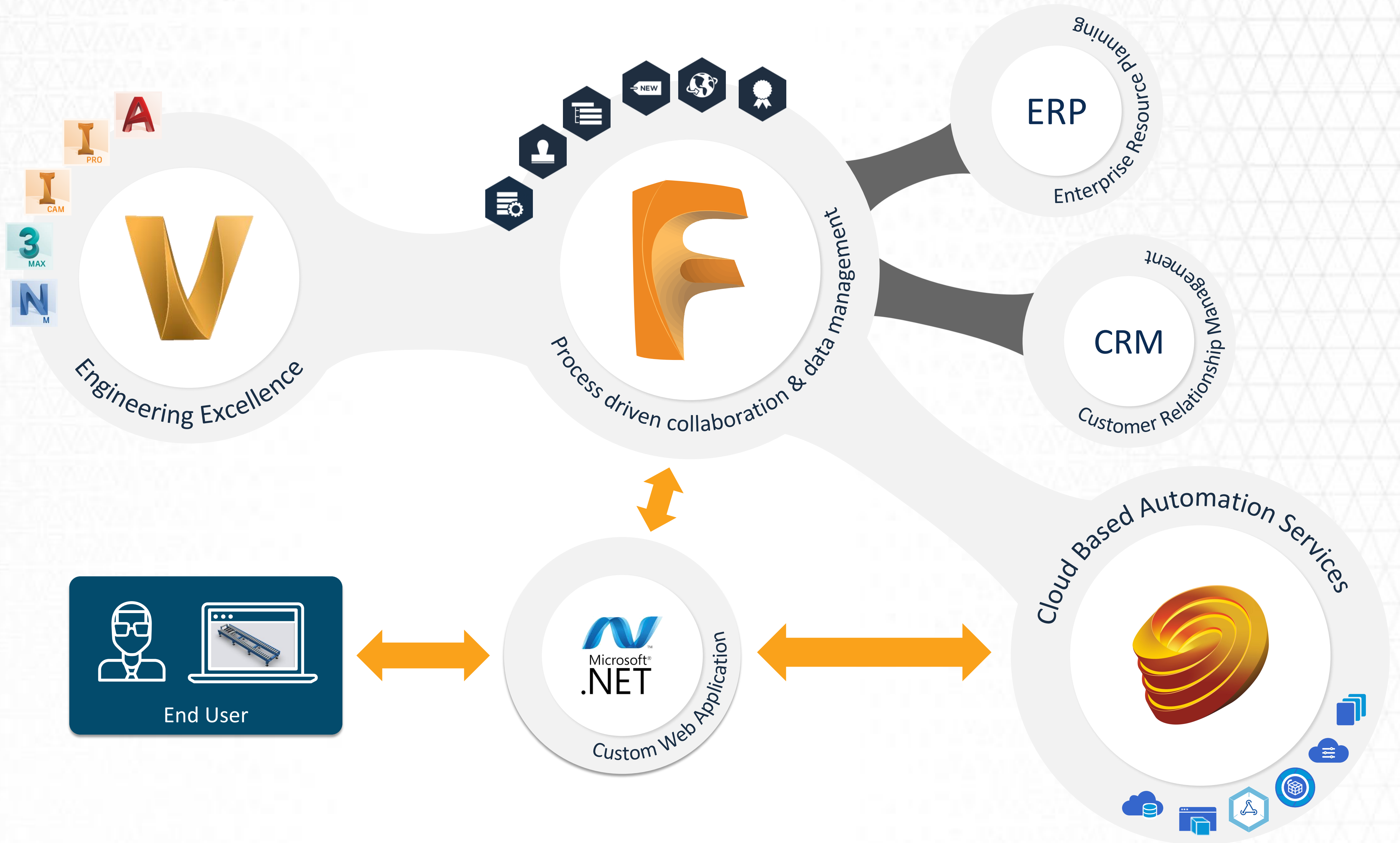






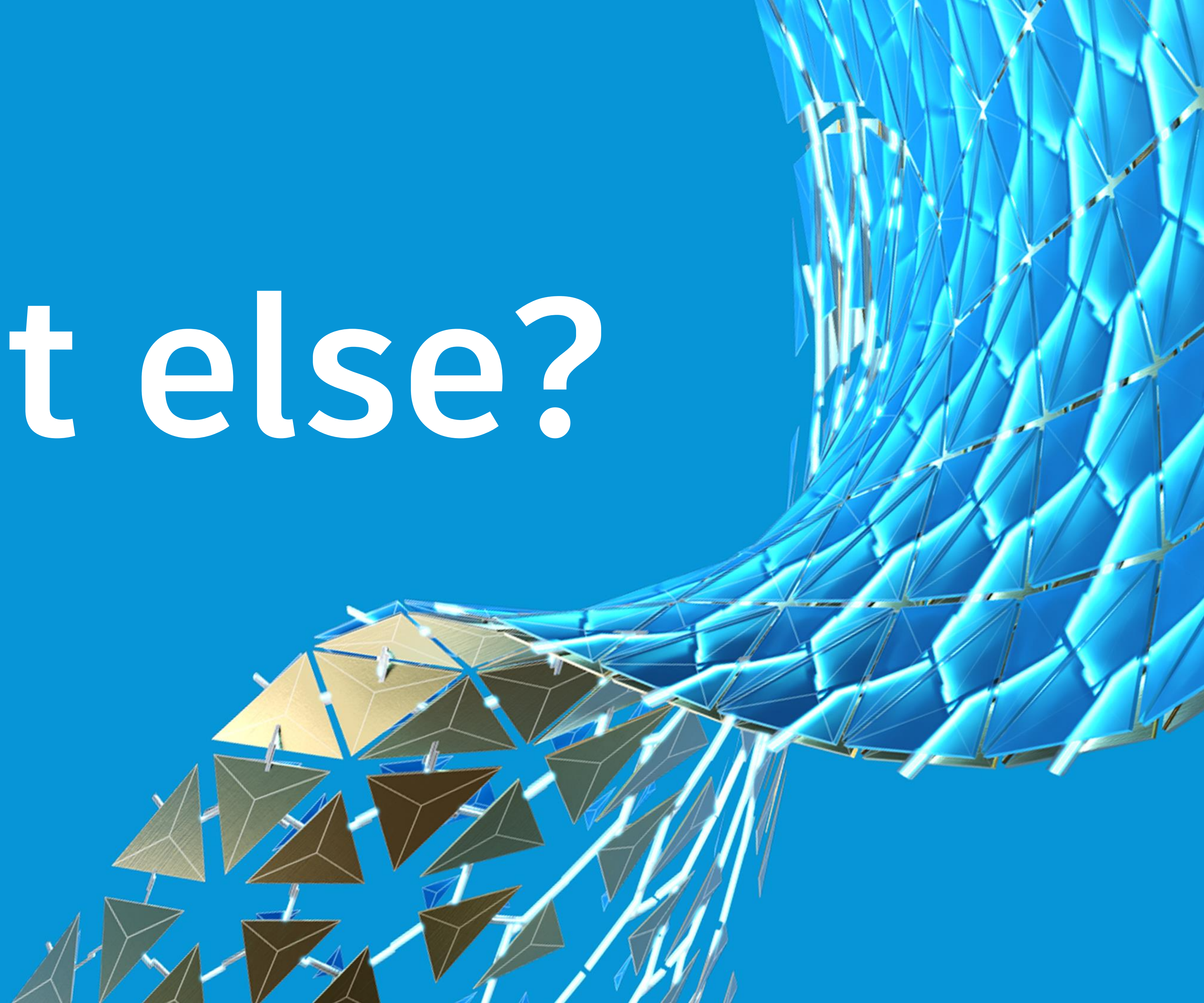








# What else?





# Design Review Portal

AUTODESK FUSION LIFECYCLE

Home > Design Reviews

DR0017 - Car Seat

[4] Review Workflow actions

DetailsAttachments (6)Actions (2)WorkflowMilestones (3)Change Log

Edit

Basic (1 of 5)

NumberDR0017

TitleCar Seat

DescriptionCar Seat review

TypeConcept

References (2 of 5)

	Project	Business Unit	Preceding Review	Followup Review
Reference Items	PRJ0006	Automotive		

Responsibilities & Schedule (3 of 5)

	User	Target Date	Actual Date	Delay
Preparation	Dickmans, Sven	04/10/2019	04/09/2019	-1 days
Reviewer	Meyers, Marc	04/10/2019		19 days
Final Validation	Eagle, Eric	05/09/2019		-9 days

Engineering Data (4 of 5)

CAD File157-00435 - Car Seat - C

Review Results (5 of 5)

IssuesConcernsAlternativesDeficiencies

Owner and Change Summary

DetailsAttachments (6)Actions (2)WorkflowMilestones (3)Change Log

UploadDownload

Display folders at the top

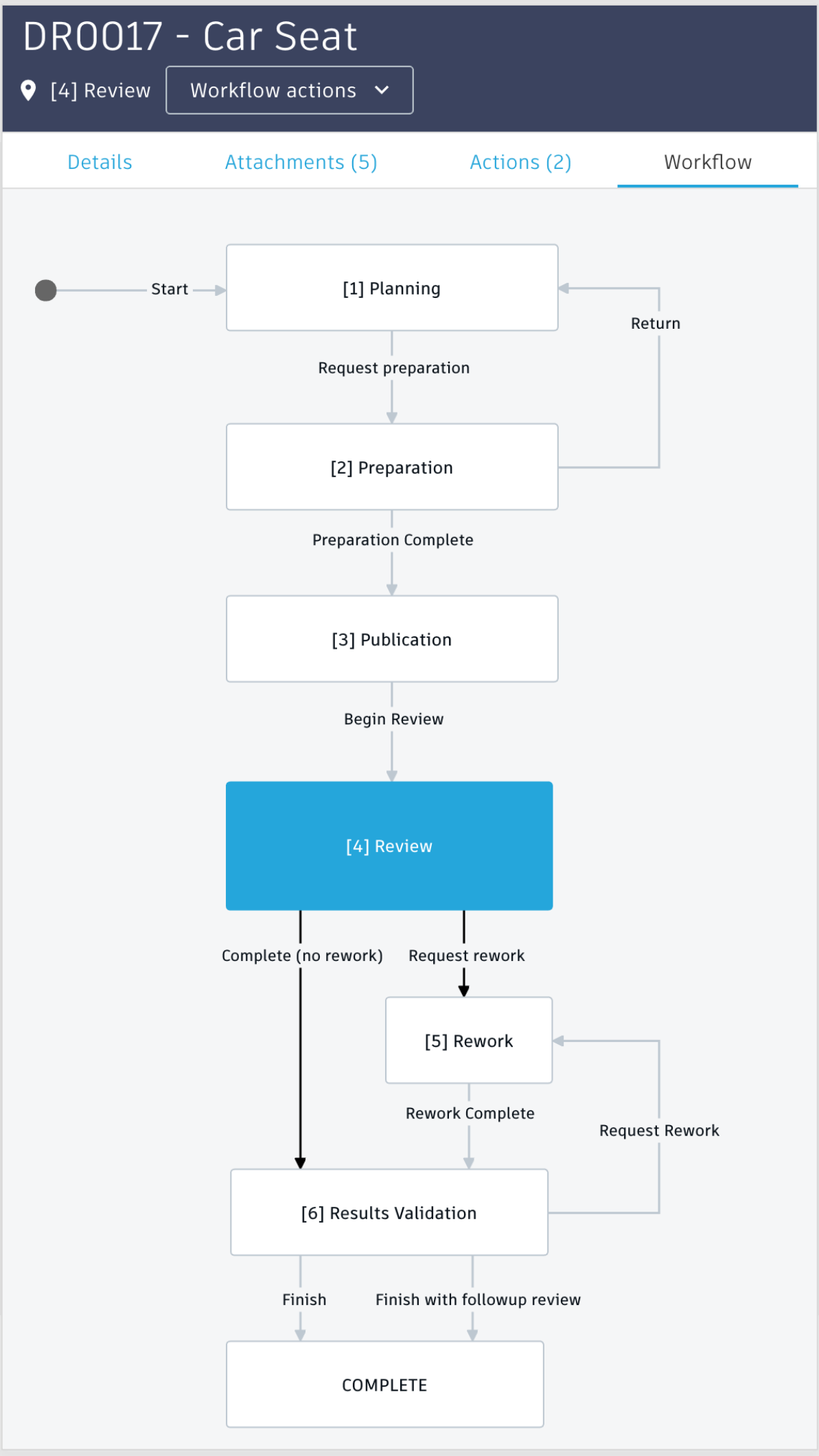
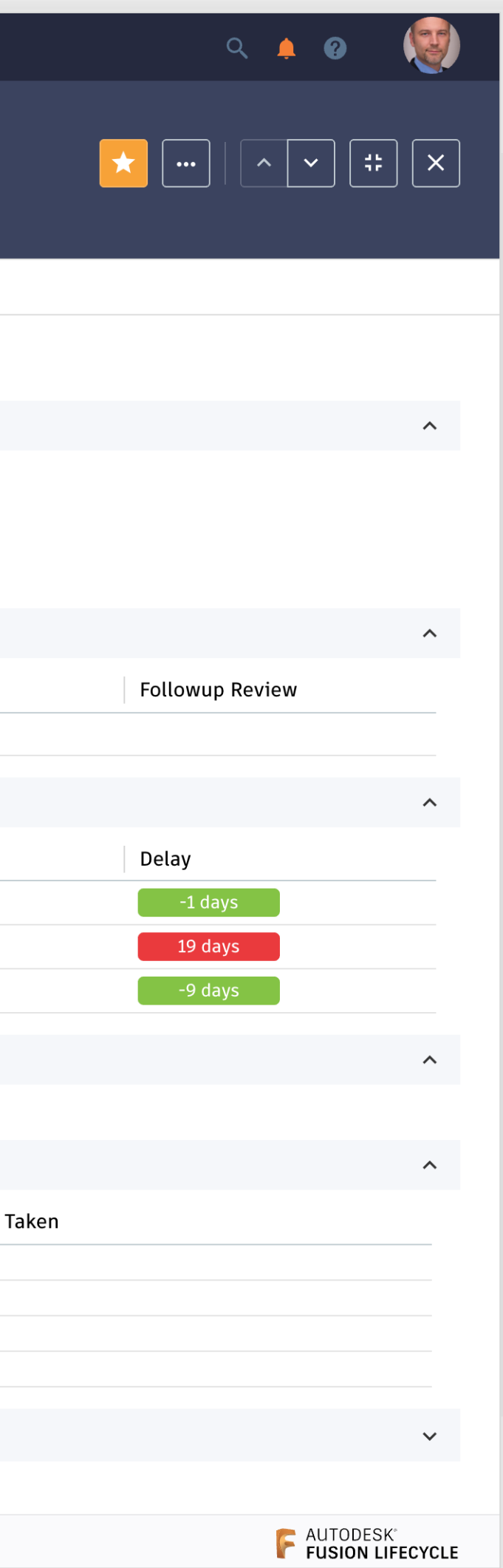
Direct Attachments

	File Name ↑	Title	Ver.	Type	Size	Last Updated	Description
<input type="checkbox"/>	Aktionen.xlsx	Aktionen.xlsx - 1554374588641	1	Microsoft Excel	39.5 KB	04/04/2019	Aktionen.xlsx
<input type="checkbox"/>	ColorCodes.xlsx	ColorCodes	1	Microsoft Excel	83.6 KB	10/31/2018	
<input type="checkbox"/>	Cost Sheet.xlsx	Cost Sheet	1	Microsoft Excel	20.6 KB	10/31/2018	
<input type="checkbox"/>	Meeting Minutes 2018-07-12.docx	Meeting Minutes 2018-07-12.docx - 1555412482493	1	Microsoft Word	33.5 KB	04/16/2019	Meeting Minutes 2018-07-12.docx
<input type="checkbox"/>	Technical Specification.docx	Technical Specification	1	Microsoft Word	22.7 KB	10/31/2018	

# Plan, schedule and document Design Reviews in Fusion Lifecycle

# Design Review Portal

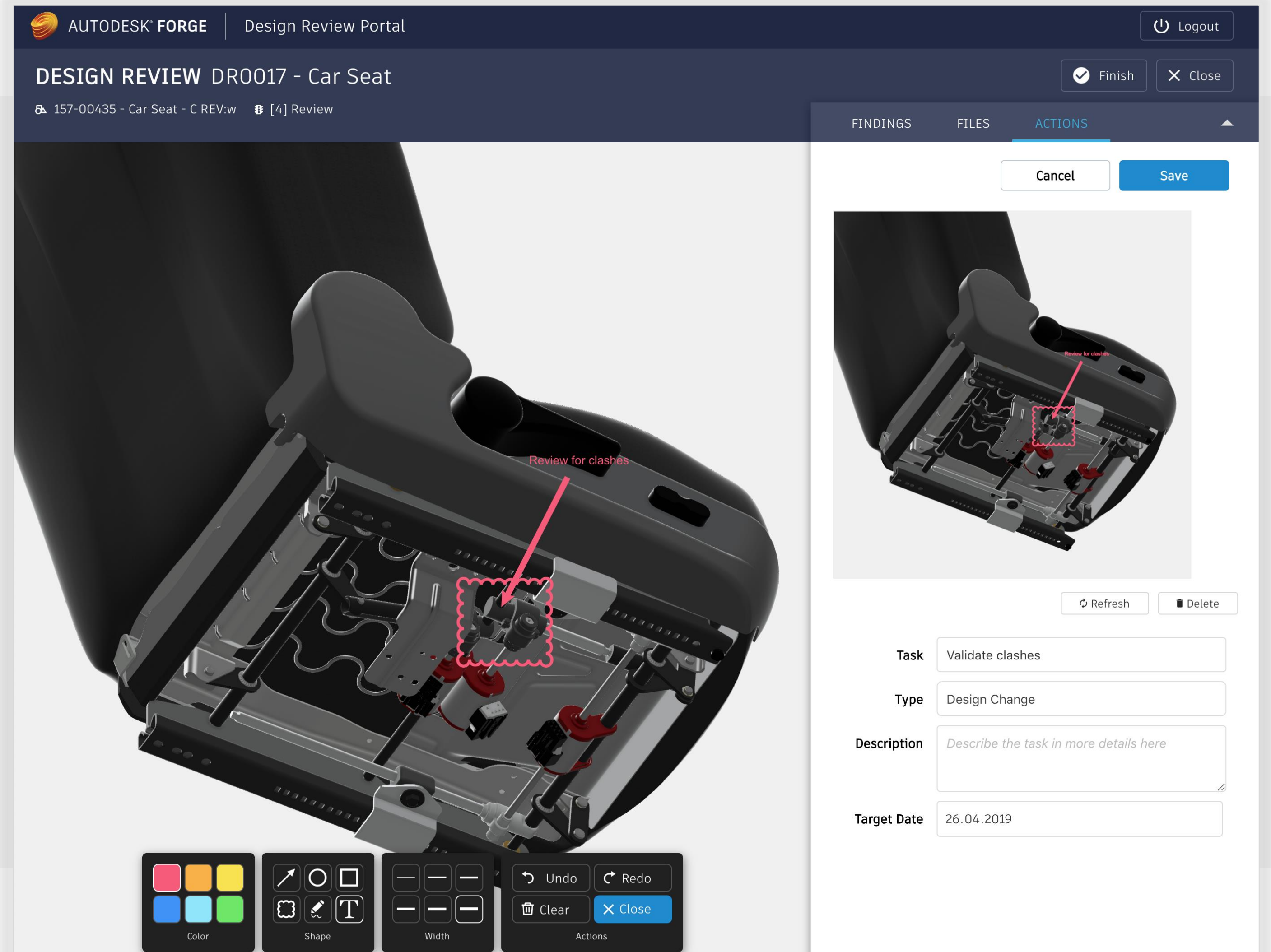
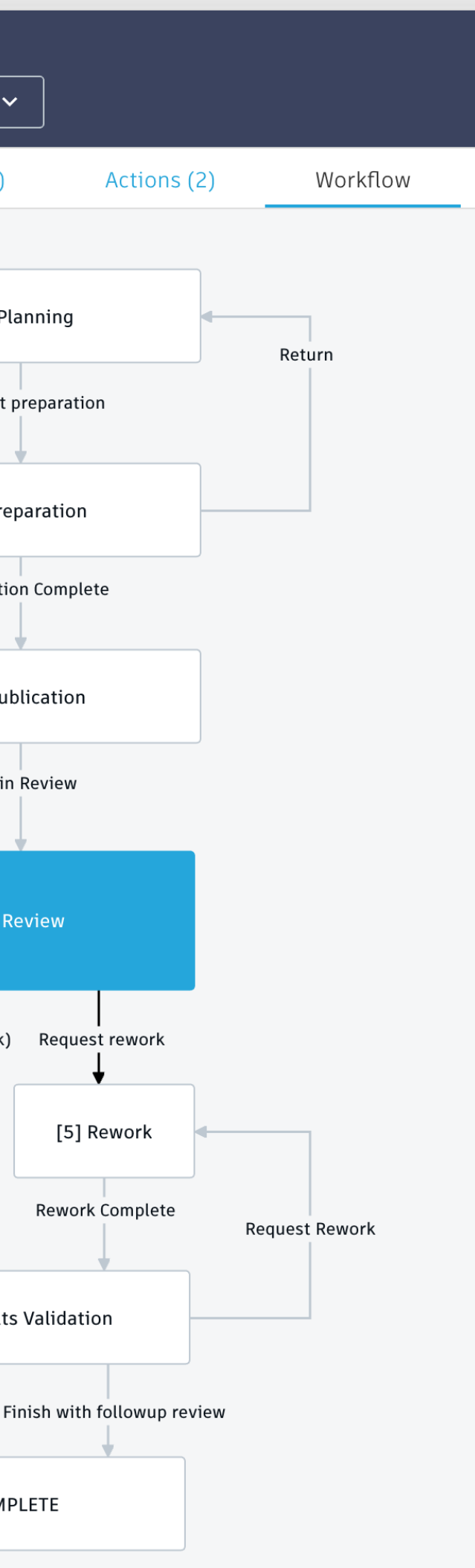
Publish data to  
Forge upon data  
availability and  
Design Review  
launch



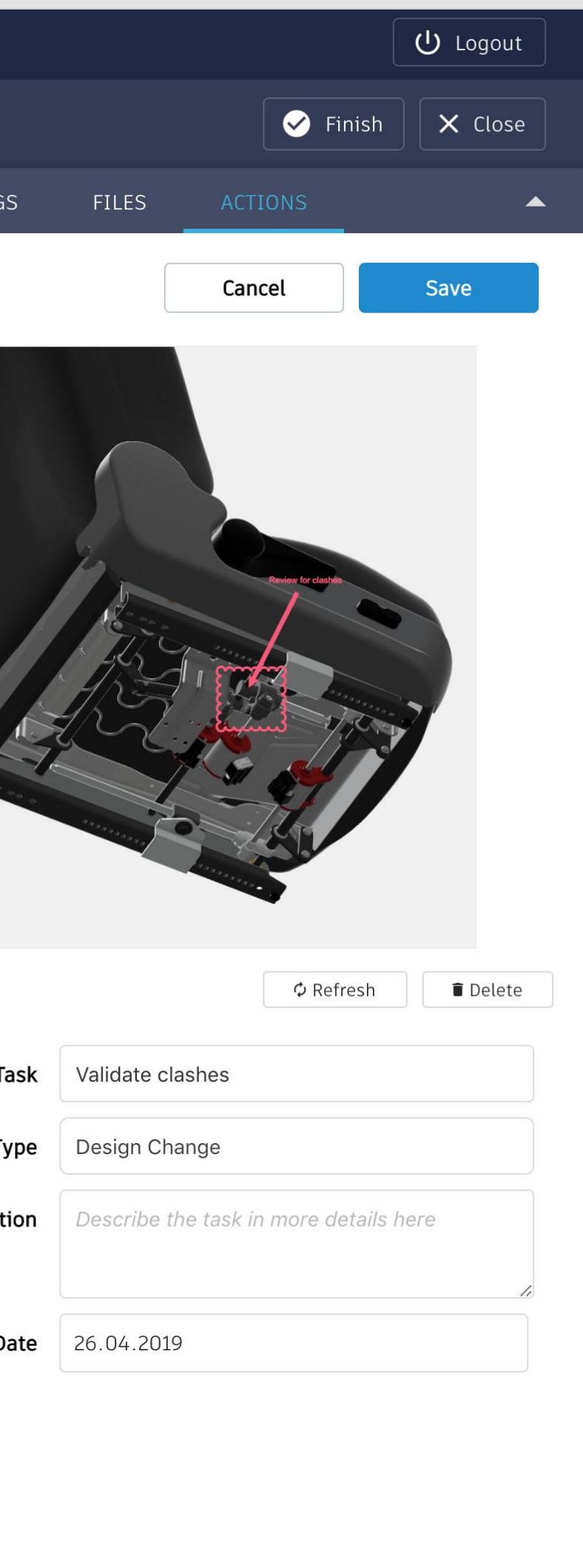


# Design Review Portal

# Review product data & create markups



# Design Review Portal



## DRT0061 - Check for clashes

Created Workflow actions

Task Details

Supporting Documents (0)

Milestones (2)

Edit

Definition (1 of 6)

Markup



Task Check for clashes

Type Simulation

Description Review assembling inst

Target Completion Date 04/25/2019

Design Review DR0017 - Car Seat

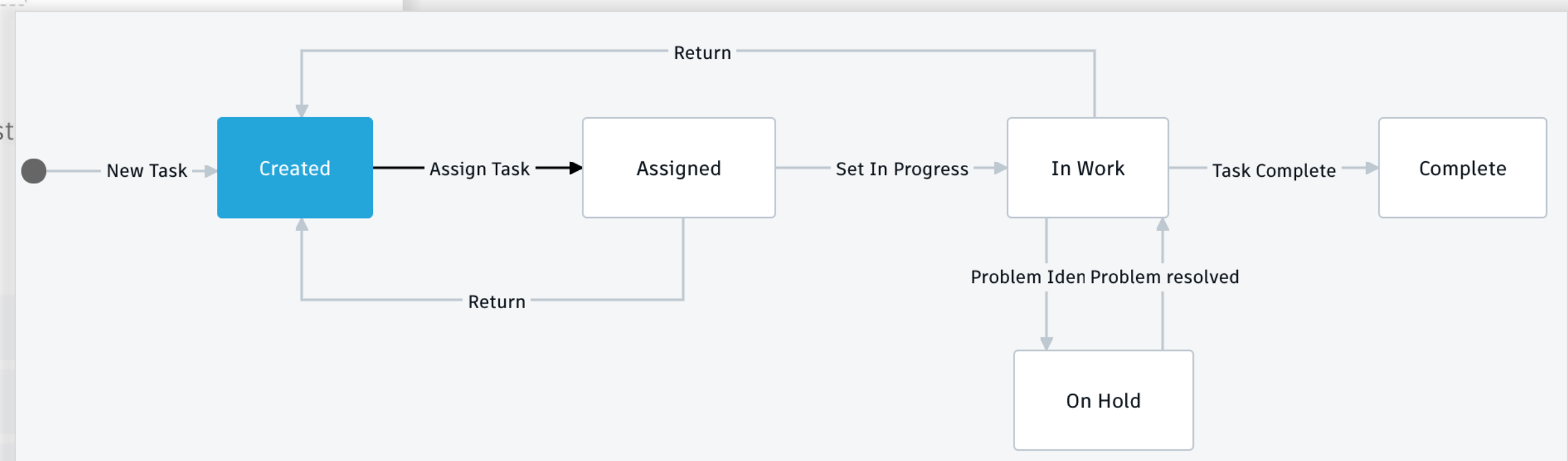
Assignment (2 of 6)

Schedule (3 of 6)

Efforts (4 of 6)

Change Request (5 of 6)

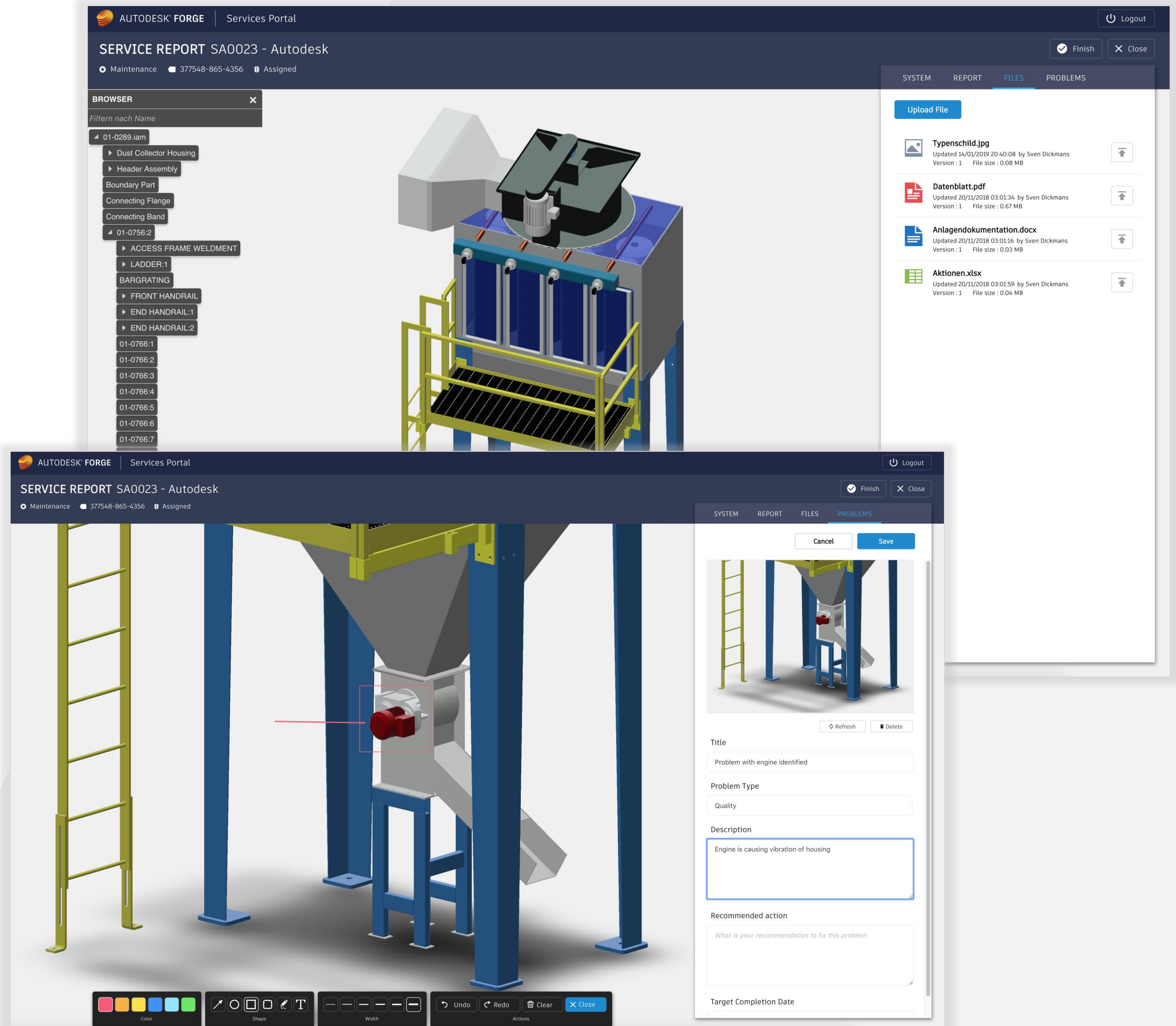
Assess & assign comments to derive online tasks for the team





# Services Portal

Real time access to  
all product  
information &  
process-based  
collaboration for  
Service Engineers





We **CONNECT**  
Anything



### Industries

Our material handling equipments serve a wide range of industries

[Browse Industries](#)

### Products

As market leader, we also offer products to address your needs

[Browse all products](#)

We continuously strive for perfection. Let our passion drive your success.

**INTEGRATE  
ANYTHING**



Next >

# SHORTEN LEAD TIMES



# FAQ



**PETER VAN AVONDT**

Technical Sales Specialist – Data Management  
Autodesk Northern Europe

📞 +32 498 16 55 24

✉️ [Peter.van.avondt@autodesk.com](mailto:Peter.van.avondt@autodesk.com)

🌐 [linkedin.com/in/petervanavondt](https://www.linkedin.com/in/petervanavondt)



**SVEN DICKMANS**

Senior Fusion Lifecycle Specialist  
Autodesk Technical Sales

📞 +49 151 62 82 15 81

✉️ [sven.dickmans@autodesk.com](mailto:sven.dickmans@autodesk.com)

🌐 [linkedin.com/in/sven-dickmans](https://www.linkedin.com/in/sven-dickmans)





Autodesk and the Autodesk logo are registered trademarks or trademarks of Autodesk, Inc., and/or its subsidiaries and/or affiliates in the USA and/or other countries. All other brand names, product names, or trademarks belong to their respective holders. Autodesk reserves the right to alter product and services offerings, and specifications and pricing at any time without notice, and is not responsible for typographical or graphical errors that may appear in this document.

© 2020 Autodesk. All rights reserved.