



All you need to know about AutoCAD SECURELOAD

Fenton Webb – Autodesk
Tekno Tandean – Autodesk

DV3456

Learning Objectives

At the end of this class, you will be able to:

- Understand Security concerns in AutoCAD
- Understand how AutoCAD makes itself secure
- Learn how to create secure apps
- Learn how to create secure AutoCAD apps

About the Speaker

Fenton has been a member of the Autodesk DevTech team since 2000. Originally a member of the Autodesk EMEA Team, he recently relocated to California to work for DevTech Americas. Fenton is an expert in all the AutoCAD® APIs, AutoCAD OEM, RealDWG® and AutoCAD Revit®. He particularly enjoys traveling to evangelize the APIs he supports at the Autodesk annual Developer Days conferences. Before joining Autodesk, Fenton worked for an ADN partner developing ObjectARX® applications in the civil and structural engineering domain.

The Original Security Problem

Back in the AutoCAD 2012 time frame a problem AutoCAD arose with people exploiting the LISP auto loading mechanism used by acad.lsp acaddoc.lsp/fas/vlx files to infect user's machines with viruses. We published a Technical Solution to address a variation of the virus

<http://usa.autodesk.com/getdoc?id=TS13717811>

At that time, AutoCAD would autoload the first acad/acaddoc/acad20xx/acad20xxdoc. lsp/fas/vlx or acad.dvb file it encountered in its AutoCAD Support File Search path. All the AutoCAD viruses out there were exploiting this single feature. We decided to provide an option to disable this feature since most, if not all, users use only a single acad.lsp, acaddoc.lsp or acad.dvb.

Most of these viruses used to get to a user by slipping the lisp files into a zip file containing legitimate drawings. When a user unzips the zip file and double clicks on a drawing file to open it, the lisp files get loaded and infect the machine.

There are 3 different groups of these types of user created startup files:

1. acad.lsp/fas/vlx

2. acad.doc.lsp/fas/vlx
3. acad.dvb

FAS & VLX filetypes are compiled LSP files. DVB is a Visual Basic for Applications macro file.

In addition, we sometimes used to ship acad20xx.lsp and acad20xxdoc.lsp files (xx represents the release year). These files are “reserved” for AutoCAD use only.

Only 1 of each group is loaded.

If acad.lsp, acad.fas and acad.vlx are all present in the same directory, only acad.vlx is loaded and acad.fas and acad.lsp is ignored.

If all 7 files are present, only acad.vlx, acad.doc.vlx and acad.dvb is loaded. But it depends on which directory these files are found. Each of these files is loaded from the first place AutoCAD finds them as it works through its search path.

The search path isn't just what is defined in the Options Files tab; it also includes the current folder (usually the start-in folder defined in the program shortcut) and the current drawing's folder.

The current folder is searched first, then the drawing folder, then the rest of the search path. So if acad.lsp is found first, it will get loaded even if an acad.fas/vlx exists. (At any time only 1 of the files acad.lsp, acad.vlx or acad.fas is loaded, even when the files are located in different directories. If AutoCAD finds and loads one of these files, it stops looking for the other 2).

The Search order for these files is:

1. Acad.VLX
2. Acad.FAS
3. Acad.LSP

But if all 3 (or 2) of the files are present in a directory, AutoCAD first checks if the .lsp file is newer than the .VLX or the .FAS file. If it is, then AutoCAD loads the .LSP file.

Acad.lsp/fas/vlx, acad.doc.lsp/fas/vlx or acad.dvb are not shipped with AutoCAD, and are created by users.

The reserved acad20xx.lsp and acad20xxdoc.lsp files were installed in the <installdir>\support folder. (As of AutoCAD 2013, the acad20xxdoc.lsp file is installed into a localized sub-folder folder such as en-us). acad20xx.lsp and acad20xxdoc.lsp were supposed to be for AutoCAD internal use only, so users should not have been creating/editing them. We clearly documented this in the Help documentation. But we were treating these files like acad.lsp and acad.doc.lsp (i.e. the first file found in the search path is autoloaded).

One of our CAD bloggers documents the order in which these files are loaded- Section B in <http://www.blog.cadnauseam.com/2008/09/01/what-is-loaded-at-autocad-startup-and-when/> If all these files are found, AutoCAD will load all of them. (The only exception is when all 3 versions (i.e acad.lsp, acad.vlx and acad.fas are found in a directory, only acad.lsp is loaded – the other 2 are ignored).

References

How to detect and remove the Acad.vlx virus:

<http://usa.autodesk.com/adsk/servlet/ps/dl/item?siteID=123112&id=13717811&linkID=9240617>

Comparing the acad*.lsp files:

<http://usa.autodesk.com/adsk/servlet/ps/dl/item?siteID=123112&id=2897258&linkID=9240617>

What is loaded at AutoCAD startup, and when?: <http://www.blog.cadnauseam.com/2008/09/01/what-is-loaded-at-autocad-startup-and-when/>

Comparing the acad*.lsp files:

<http://usa.autodesk.com/adsk/servlet/ps/dl/item?siteID=123112&id=2897258&linkID=9240617>

Additional Information from the Help docs

Help->Customization Guide-> The ACAD.LSP File

You can create an acad.lsp file if you regularly use specific AutoLISP routines. When you start AutoCAD, it searches the support file search path for an acad.lsp file. If an acad.lsp file is found, it is loaded into memory.

Warning: Do not modify the reserved acad2012.lsp file. Autodesk provides the acad2012.lsp file, which contains AutoLISP defined functions that are required by AutoCAD. This file is loaded into memory immediately before the acad.lsp file is loaded.

Help->Customization Guide-> The ACADDOC.LSP File

Most users will have a single *acaddoc.lsp* file for all document-based AutoLISP routines. AutoCAD searches for an *acaddoc.lsp* file in the order defined by the library path; therefore, with this feature, you can have a different *acaddoc.lsp* file in each drawing directory, which would load specific AutoLISP routines for certain types of drawings or jobs.

Warning: Do not modify the reserved *acad2012doc.lsp* file. Autodesk provides the *acad2012doc.lsp* file, which contains AutoLISP-defined functions that are required by AutoCAD. This file is loaded into memory immediately before the *acaddoc.lsp* file is loaded.

Help->Customization Guide-> Automatically Load and Execute VBA Projects

The *acad.dvb* file is useful if you want to load a specific VBA project that contains macros you want each time you start AutoCAD. Each time you start a new AutoCAD drawing session, AutoCAD searches for the *acad.dvb* file and loads it.

The Solution – AutoCAD 2012 sp1

The solution includes updates to 3 areas:

- New command line startup up switch
- New system variables
- Change load rules for acad20xx.lsp and acad20xxdoc.lsp

New Command Line Startup Up Switch

Introduce a new command line switch called “/nolisp”.

Starting AutoCAD with this switch will disable Lisp in AutoCAD (includes LSP, FAS, VLX). This will break some menu items, express tools, etc. but this is meant for emergency use when a system is infected and the user is afraid of launching AutoCAD.

NOTE: This startup switch also provides the user the ability to change the AUTOLOAD & AUTOLOADPATH settings. Also, just like other start up switches, this state is only for the current session, and the state is not saved between sessions.

(New switch matches naming convention of some existing similar switches such as /nologo, /nohardware, /nossm.)

When the “nolisp” command line switch is used, it sets the new LISPENABLED system variable to 0.

New System Variables

We added a new read-only sysvar (**LISPENABLED**) which corresponds to the new command line switch.

Item	Description
Name	LISPENABLED
Description	Controls whether LISP is enabled for the AutoCAD session (includes LSP, FAS, VLX)
Data Type	Integer
Values	0 –LISP is disabled 1 –LISP is enabled
Initial Value	1
Stored in	Not Saved- Current Session only
Accessed from	CLI, SETVAR command, startup switch “/nolisp”

We have also added 2 new read/write sysvars (**AUTOLOAD, AUTOLOADPATH**) which enables the user to determine whether or not AutoCAD automatically loads acad.lsp/fas/vlx, acad.doc.lsp/fas/vlx, acad.dvb files, and where it loads them from.

Users can still load other LISP files. AutoCAD 2012 sp1 still loads the reserved acad20xx.lsp and acad20xxdoc.lsp files (from the Support directory- see ‘Change load rules’ section below).

This setting only affects the auto-loading of user-defined startup files (acad.lsp/fas/vlx, acad.doc.lsp/fas/vlx, acad.dvb).

Item	Description
Name	AUTOLOAD
Description	Controls whether or not AutoCAD autoloads LSP, FAS, VLX, DVB files
Data Type	Integer
Values	0 (Off)– Does not autoload acad.lsp/fas/vlx, acad.doc.lsp/fas/vlx, acad.dvb files. 1 (On) – Autoloads acad.lsp/fas/vlx, acad.doc.lsp/fas/vlx, acad.dvb files.
Initial Value	1
Stored in	Named Profile/Registry
Accessed from	CLI, SETVAR command

Item	Description
Name	AUTOLOADPATH
Description	Controls where AutoCAD autoloads acad.lsp/fas/vlx, acad.dvb files from
Data Type	Text
Values	<p>"<folder path>" or multiple folder paths separated by commas. AutoCAD will only load acad.lsp/fas/vlx, acad.dvb files it finds in the specified folders (and no other locations including the current drawing location).</p> <p>"" (empty) same as legacy behavior. AutoCAD will load acad.lsp/fas/vlx, acad.dvb files it finds in the Support File Search path (including the current drawing location).</p>
Initial Value	"" empty
Stored in	Named Profile/Registry
Accessed from	CLI, SETVAR command

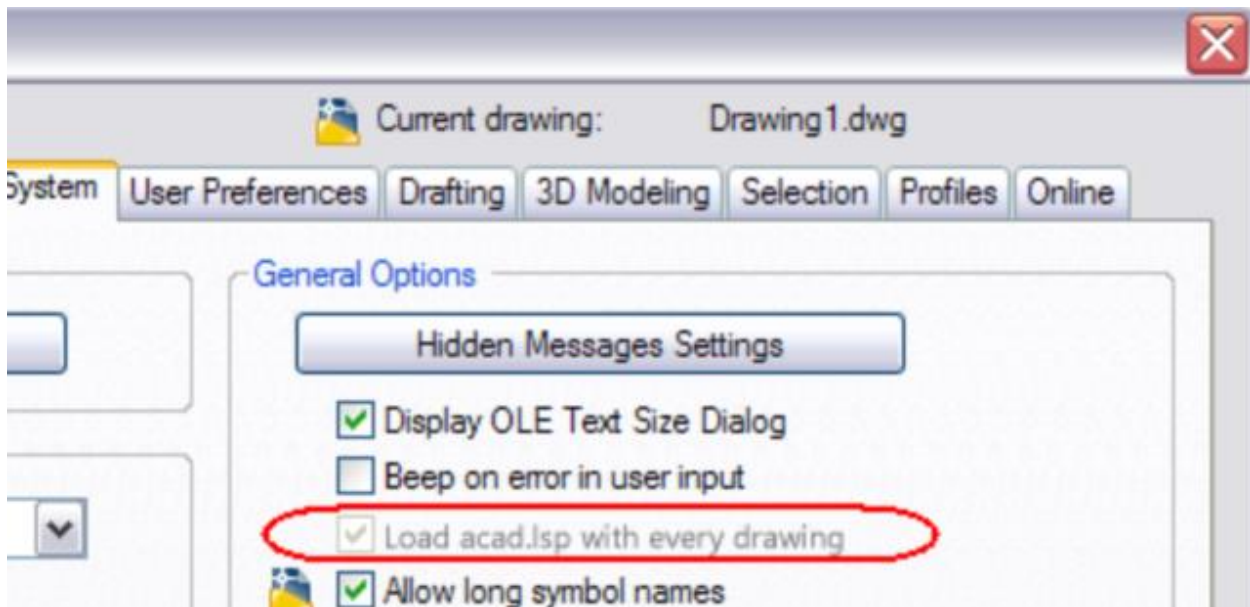
The AUTOLOADPATH system variable is saved in the same Registry location as the AutoCAD Support File Search Path (ACAD):

HKEY_CURRENT_USER\Software\Autodesk\AutoCAD\R19.0\ACAD-B001:409\Profiles\<profilename>\General

Options dialog

The existing "Load acad.lsp with every drawing" in the System tab in Options dialog is disabled when AUTOLOAD disables this feature [AUTOLOAD=0]. Also disabled when LISPENABLED=0.

The checked/unchecked value is still determined by the existing ACADLSPASDOC system variable.



Changed load rules for acad20xx.lsp and acad20xxdoc.lsp

Before, we treated acad20xx.lsp and acad20xxdoc.lsp similar to acad.lsp and acaddoc.lsp (i.e. the first file found in the search path is autoloaded). This is no longer the case, we now only load the files found in the Install Support directory. For example: C:\Program Files\Autodesk\AutoCAD 2013\Support

These files are meant for internal AutoCAD use and the users should not be creating them on their own.

AutoCAD verticals

This functionality behaves exactly the same as in AutoCAD.

AutoCAD for Mac

This functionality behaves nearly identical to AutoCAD for Windows.

NOTE: AutoCAD for Mac supports LSP & FAS files, but not VLX files.

AutoCAD LT/AutoCAD OEM

This functionality and related system variables are not be available in LT. LT doesn't have this problem because Lisp files cannot be run in AutoCAD LT.

The Solution – AutoCAD 2014

Basically, the AutoCAD 2012 SP1 solution was incomplete (it was only limited to Lisp), therefore we needed 2014 Security changes to provide a much more comprehensive barrier to all executable code files that could potentially be malicious.

The solution includes updates to the following areas:

- Expand filetypes that is detected by SECURELOAD
- Add new settings to Options dialog which correspond to the AUTOLOAD & AUTOLOADPATH sysvars added via the AutoCAD 2012 sp1(now called SECURELOAD & TRUSTEDPATHS)
- Split AUTOLOADPATH into 2 sysvars (TRUSTEDPATHS, TRUSTEDDOMAINS)
- Implicitly “trust” digitally signed executable files (DLL, EXE, ARX, DBX, etc.)
- Define trusted install location for some folders & files
- “/safemode” startup switch, SAFEMODE & SAFEMODEAPPS system variables
- New warning dialog to warn users when executable files are detected that are not included in TRUSTEDPATHS & TRUSTEDDOMAINS
- Change Loading for CUIx/MNL files
- Add warning message to warn users when writable locations are specified in TRUSTEDPATHS
- New LISP function (findtrustedfile) as opposed to (findfile)
- Add new settings to Deployment Wizard

All Filetypes detected by SECURELOAD

The AUTOLOAD settings introduced in the 2012 sp1 have been updated in 2014 and also expands the type of files we automatically load from the narrow list of user-defined startup files (acad.lsp/fas/vlx, acad.doc.lsp/fas/vlx & acad.dvb) that we targeted in the 2012 sp1 to all ARX, Lisp, .NET assemblies, VBA, Javascript & DLL files.

In the AutoCAD 2012 sp1, the AUTOLOAD settings were 0 (Off) and 1 (On). For AutoCAD 2014, the name of the sysvar changes to SECURELOAD and the values are different (see below). The AUTOLOAD values are changed from the 2012 SP1, because the “/safemode” startup switch makes the AUTOLOAD =0 (Disabled) setting unnecessary.

If SECURELOAD =1, AutoCAD will prompt the user if it tries to load any executable code files (if not located in the Trusted locations and not digitally signed): The list of executable file types includes, but is not limited to:

- ARX/DBX/CRX
- LSP/FAS/VLX/MNL
- .NET assemblies
- VBA macros, acad.rx, acVBA.arx, acad.dvb
- Javascript
- DLL
- SCR files (located on network)

For 2014, we now implicitly “trust” all digitally signed executable files (DLL, EXE, ARX, DBX, etc) - they do not need to be in one of the “Trusted Locations”.

acad.rx isn't an executable file, it's a text-based manifest of references to .arx and .dbx files to be loaded. acad.rx files are just another place AutoCAD looks to find out what executable files it should load (along with the Registry, the Startup Suite, the Autoloader, etc.).

Item	Description
Name	SECURELOAD

Description	Controls whether or not AutoCAD autoloads executable files it finds in the regular search path (start-in folder, Drawing folder, Support File Search Path, Install folder)
Data Type	Integer
Values	0 –Load without warning (Legacy Behavior). 1 –Load without warning if the file is also in TRUSTEDPATHS & TRUSTEDDOMAINS. If not in TRUSTEDPATHS & TRUSTEDDOMAINS, display warning dialog before loading. Applies to autoloading & manual loading. 2 –Load without warning if the file is also in TRUSTEDPATHS & TRUSTEDDOMAINS. If not in TRUSTEDPATHS & TRUSTEDDOMAINS, do not display warning dialog. Applies to autoloading & manual loading. If a file found is not trusted, the command line will display the same error message as selecting “Do Not Load” in the File Loading - Security Concern task dialog. “File load canceled: <path\filename>”
Initial Value	1
Stored in	Named Profile/Registry
Accessed from	CLI, SETVAR command

Note: SECURELOAD=0 restores the Legacy behavior.

TRUSTEDPATHS

The AUTOLOADPATH system variable introduced in AutoCAD 2012 SP1 has been renamed to TRUSTEDPATHS.

We always recursively trust the acad.exe directory and the ApplicationPlugins folders (used by Exchange Apps).

Item	Description
Name	TRUSTEDPATHS
Description	Specifies the folders from where AutoCAD can load and execute files that contain code. Used in conjunction with SECURELOAD= 1 or 2
Data Type	Text
Values	Multiple folders separated by semi-colons.
Initial Value	"" (empty) Note: We always recursively trust the acad.exe directory and the two Application Plugins folders: All Users: C:\ProgramData\Autodesk\ApplicationPlugins Roaming User: C:\Users\<login>\AppData\Roaming\Autodesk\ApplicationPlugins
Stored in	Named Profile/Registry
Accessed from	CLI, SETVAR command, Options dialog- Files tab

Users can load a file from Trusted Locations (without it being on the regular search path), as long as they specify the full path (same as current behavior). We only “search” the regular search path, and make trust decisions based on “Trusted locations”.

The location of the Express Tools folder does NOT need to be moved from Support File Search Path to TRUSTEDPATHS.

The Exchange App Plug-ins do NOT need to be added to TRUSTEDPATHS. They continue to write to the Support File Search Path, as they were in 2013.

TRUSTEDDOMAINS

This is a new system variable introduced in AutoCAD 2014 to handle the autoloading of Javascript files.

Item	Description
Name	TRUSTEDDOMAINS
Description	Specifies the domain names or URLs from which AutoCAD can run JavaScript code.
Data Type	Text
Values	Multiple locations separated by semi-colons.
Initial Value	TBD by SWD
Stored in	Named Profile/Registry
Accessed from	CLI, SETVAR command

Users can specify multiple URLs for Javascript servers.

The URLs support wildcards. eg:

```

*.autodesk.com/*           // trust anything from Autodesk
*.autocadws.com/*          // trust anything from AutoCAD WS
*.codeplex.com/site/MyProject/* // trust anything from a subdomain
https://144.111.123.123/*   // trust only https protocol from a specific IP address

```

Options dialog changes

One new branch has been added to the Files tab in the Options dialog ("Trusted Locations"). This corresponds to the TRUSTEDPATHS system variable.

The dialog entry is changed from "Trusted File Search Path" to "Trusted Locations", since we are no longer searching Trusted locations.

Note: We are not adding the "Trusted Domain Locations" to the Options dialog (this is only for Deployment).

These paths are the designated "trusted sites" for executable code files. Files in these locations are loaded without prompting (same as legacy behavior). For that reason, it is recommended that only read-only folders are specified in TRUSTEDPATHS. NOTE: A warning message is displayed if user tries to add a writable location. See below.

Trusted Locations

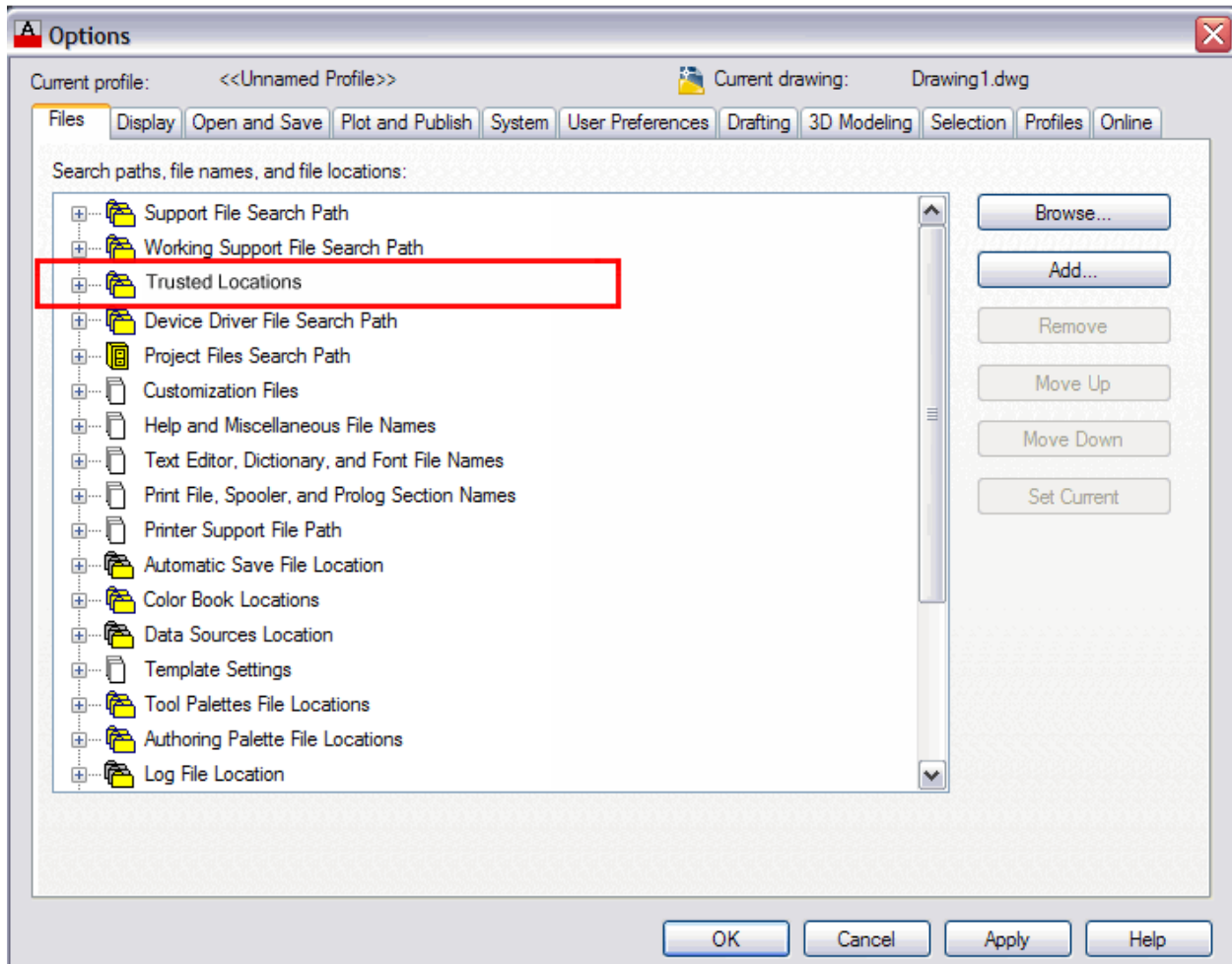
Users can specify multiple paths.

The tooltip for the new branch is: Specifies the folders from where AutoCAD can load and execute files that contain code. The AutoCAD executable folder and its subfolders, and the plug-in applications folders are automatically trusted.

Error messages match the existing error messages in the Files tab for folder locations. For example, if a non-existing folder is specified, an error message is displayed.

NOTE: We support syntax that indicates “trust” for subdirectories of a directory\path. ‘\...’ (three dots) can be used to specify sub-folders.

Note: We always recursively trust the acad.exe directory and the two Application Plugins folders (but they are not listed).



Options- Warning Message

If the user selects a writable location for “Trusted Locations”, AutoCAD 2014 presents a warning dialog message with these options...

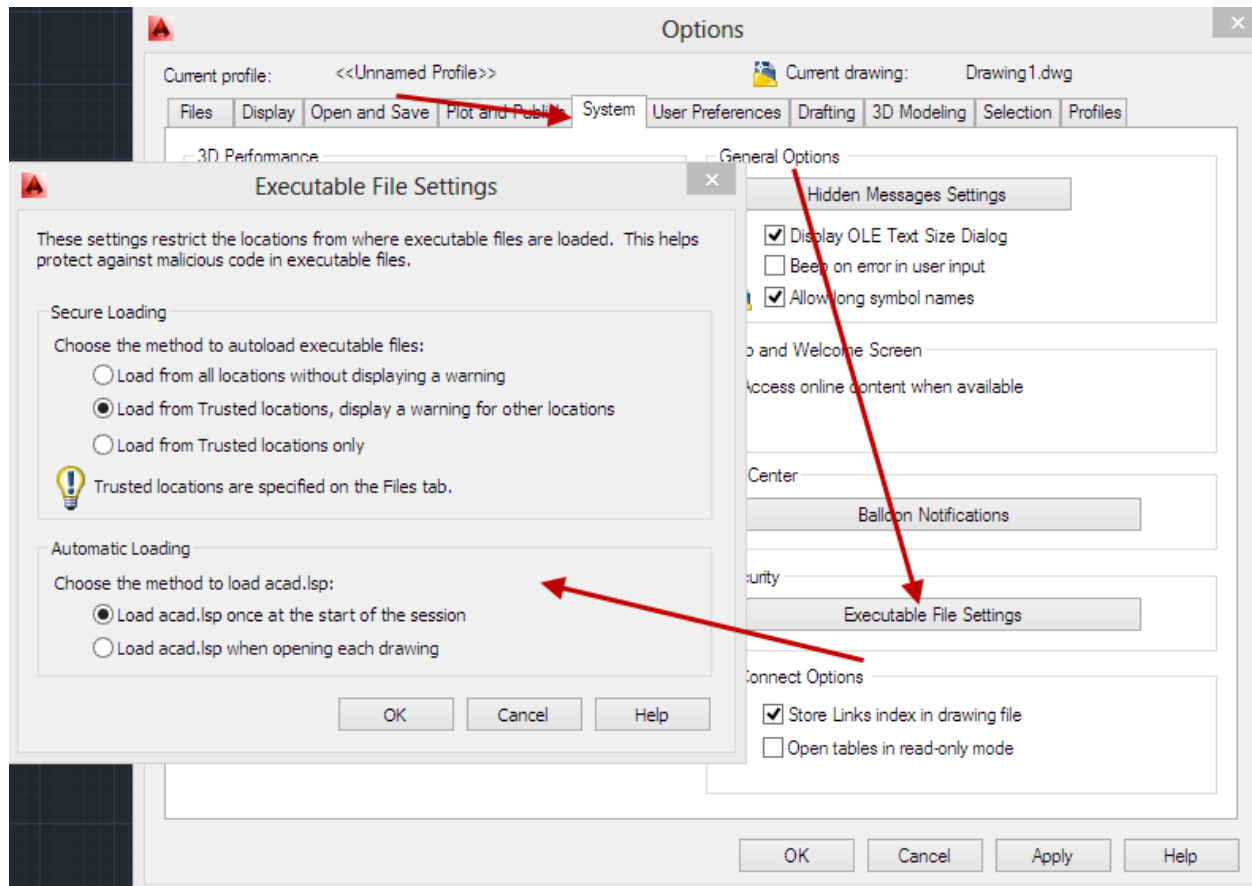


Button	Description
Continue	Closes the task dialog and returns to the Options dialog. The location specified is accepted in the "Trusted Locations". This is the default option if the user just presses Enter key.
Cancel, X button or ESC key	Closes the task dialog and returns to the Options dialog. The location specified for "Trusted Locations" is removed, and cursor is left at blank field (same as clicking "Add" button).

The System tab in Options dialog has also been modified in AutoCAD 2014.

- The existing "Load acad.lsp with every drawing" checkbox has been moved to a new sub-dialog, and changed from a single checkbox to a pair of radio buttons.
- A new group box "Security" has been added with a new button "Executable File Settings". This button invokes the new Executable File Settings sub-dialog.

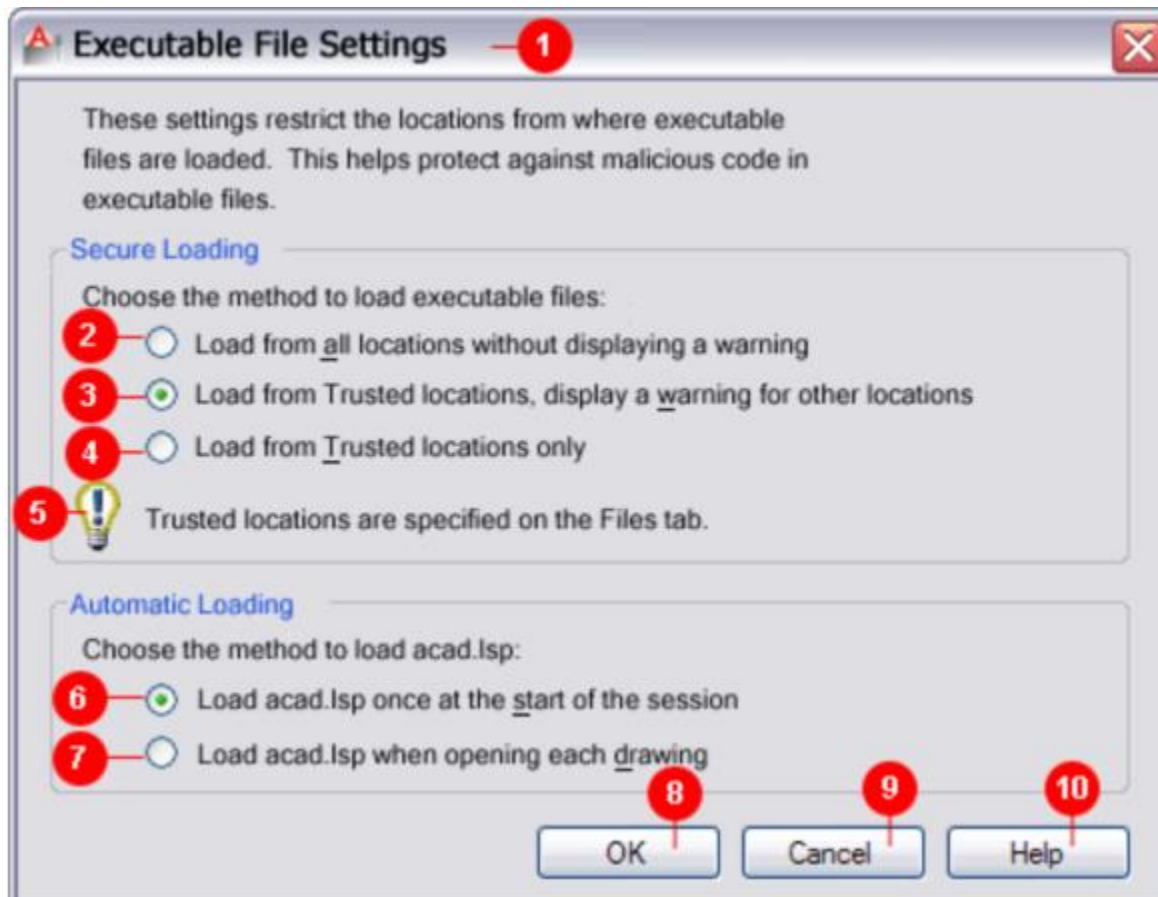
The new Executable File Settings dialog allows users to control the loading of executable code files.



There are three radio buttons-that correspond to the SECURELOAD system variable.

The existing “Load acad.lsp with every drawing” (ACADLSPASDOC) is changed from a single checkbox to a pair of radio buttons.

The radio buttons for these 2 controls (SECURELOAD, ACADLSPASDOC) are disabled if SAFEMODE=1.



ID	Control	Type	Accel. key	Description	Enable/Disable	Initial Default
1	Executable File Settings	Title	N/A		N/A	N/A
	Descriptive Text	Static Text	N/A	These settings restrict the locations from where executable files are loaded. This helps protect against malicious code in executable files.	N/A	N/A
	Secure Loading	Group box	N/A		N/A	N/A
	Choose the method to	Static	N/A		N/A	N/

All you need to know about AutoCAD SECURELOAD

	load executable files:	Text				A
2	Load from all locations without displaying a warning	Radio button	A	Controls where executable code files are loaded from. SECURELOAD = 0	Enabled. Disabled if SAFEMODE=1	Un selected
3	Load from Trusted locations, display a warning for other locations	Radio button	W	Controls where executable code files are loaded from. SECURELOAD = 1 When selected, this displays the File Loading- Security Concern warning dialog when AutoCAD detects and tries to load an executable code file outside of the Trusted locations (Trusted Locations & Trusted Domain Locations).	Enabled. Disabled if SAFEMODE=1	Selected
4	Load from Trusted locations only	Radio button	T	Controls where executable code files are loaded from. SECURELOAD = 2	Enabled. Disabled if SAFEMODE=1	Un selected
5	Tip	Static text		Tip text: Trusted locations are specified on the Files tab.	N/A	N/A
	Automatic Loading	Group box	N/A		N/A	N/A
	Choose the method to load acad.lsp:	Static Text	N/A		N/A	N/A
6	Load acad.lsp once at the start of the session	Radio button	S	Controls whether the acad.lsp file is loaded into every drawing or just the first drawing opened in a session (ACADLSPASDOC=0). Replaces the "Load acad.lsp with every drawing" checkbox in AutoCAD 2012 (unchecked).	Enabled. Disabled if SAFEMODE=1	Selected
7	Load acad.lsp when opening each drawing	Radio button	D	Controls whether the acad.lsp file is loaded into every drawing or just the first drawing opened in a session (ACADLSPASDOC=1). Replaces the "Load acad.lsp with every drawing" checkbox in AutoCAD 2012 (checked).	Enabled. Disabled if SAFEMODE=1	Un selected

8	OK	Button		Accepts changes and closes the dialog.	Enabled	N/A
9	Cancel	Button		Cancels any changes and closes the dialog.	Enabled	N/A
10	Help	Button	H	Opens Help window to the appropriate help topic.	Enabled	N/A

The Settings in the Executable File Settings dialog are saved in the AutoCAD Named Profile, in the same Registry location as the AutoCAD Support File Search Path (ACAD), and where we added AUTOLOAD & AUTOLOADPATH in AutoCAD 2012 sp1.

HKEY_CURRENT_USER\Software\Autodesk\AutoCAD\R19.0\ACAD-B001:409\Profiles\<profilename>\General

Install Changes

The install location for the following files have changed or have been reevaluated:

CUIx & MNL files that were previously in the user's roamable support folder:
%appdata%\Autodesk\AutoCAD 20xx - <lang>\R19.0\enu\Support

The MNL files have been moved to the localized Support folder of the Install Dir: C:\Program Files\Autodesk\AutoCAD 20xx\Support\en-us.

The CUIx files after evaluation are staying in the user's roamable support folder because they need to be easily edited.

"/safemode" startup switch

The /nolisp startup switch introduced in AutoCAD 2012 sp1 has been renamed to '/safemode' and now includes all executable code files. This switch starts AutoCAD in a 'bare minimum state' to allow users to change AUTOLOADPATH in Options dialog .i.e. If the '/safemode' startup switch is used when launching AutoCAD, no executable code can be loaded and executed.

Note: Initially for the /safemode startup switch, we decided to disable all explicit loading of any modules (arx\crx\dbx\lsp\dvb\managed dll, etc), but we found out through testing that this was too restrictive because during AutoCAD's start up, we explicitly load acmgd.dll, accui.dll and a few others which are necessary for AutoCAD to run. So instead, we have added a new read-only hidden sysvar (SAFEMODEAPPS) to designate which modules can be loaded in safemode.

SAFEMODE

The LISPENABLED system variable introduced in AutoCAD 2012 sp1 has been renamed to SAFEMODE. This sysvar is read-only and is used to determine whether or not AutoCAD was launched in safemode via the "/safemode" startup switch.

Item	Description
Name	SAFEMODE (read-only)
Description	Specifies whether executable code can be loaded and executed for the AutoCAD session
Data Type	Integer
Values	0 –executable code can be executed 1 –executable code cannot be executed
Initial Value	0
Stored in	Not Saved- Current Session only
Accessed from	CLI, SETVAR command, startup switch “/safemode”

SAFEMODEAPPS (hidden, undocumented)

This sysvar is read-only and is used to list the trusted apps that are loaded in safemode via the “/safemode” startup switch.

Item	Description
Name	SAFEMODEAPPS (read-only)
Description	Specifies which apps can be loaded in safemode.
Data Type	Text
Values	multiple files separated by semi-colons. AutoCAD will only load the specified files in safemode.
Initial Value	Not documented
Stored in	Named Profile/Registry
Accessed from	CLI, SETVAR command

New Warning Dialog - When an executable file is found outside Trusted Locations

Default setting in the “Executable File Settings” dialog is “Display warning for executable files outside Trusted locations” (SECURELOAD=1). When SECURELOAD=1, and AutoCAD tries to load an executable code file from outside of the Trusted locations (Trusted Locations & Trusted Domain Locations) in a non-automation environment, AutoCAD pops up a dialog which warns the user to make sure the file is a trusted file before loading it. The dialog warns the user about loading files from untrusted locations.

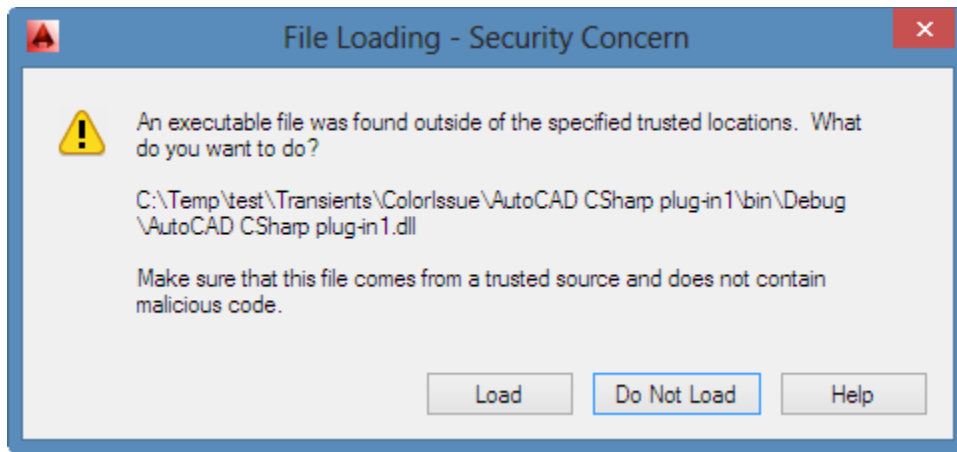
When SECURELOAD=1, this dialog is launched every time AutoCAD detects an executable file that is not in the Trusted Locations.

When SECURELOAD=0 or 2, this dialog is not displayed.

If more than one executable file is detected outside the Trusted Locations, this dialog displays for each file.

If the system does not encounter any of these files outside of the Trusted Locations, then this warning dialog is not displayed.

When SECURELOAD= 2, AutoCAD does not display a dialog warning, and also does not load executable files found if not listed in Trusted locations. The command line displays “File load canceled: <path\filename>”.



{%pathname%}{%custom_filename%} is a variable field and is populated with the <path/filename> of the detected file.

If user picks "Do Not Load", AutoCAD will NOT continue to look for the file in other directories.

We cache the "Do Not Load" or "Load" selection for the session, so the next time the user tries to load the same file, we do not prompt again.

Buttons	Description
Load	Closes the dialog and loads the file.
Do Not Load	<p>Closes the dialog and does not load the file. This is the default option if the user just presses Enter key. The command line displays an error message.</p> <p>Within the APPLOAD dialog, we display: "Unable to load <filename> file"</p> <p>When loading from the command line (eg: (load "C:/temp/foo.lsp")), we display:</p> <p>"; error: File load canceled: <path/filename>"</p>
Help	Opens the Help topic to SECURELOAD.
X or ESC key	Closes the dialog and does not load the file.

CUIx/MNL Loading changes

acad.MNL (MNL files are just LSP files renamed with .MNL extension). Prior to AutoCAD 2014, MNL files were autoloading when the corresponding CUI file was loaded. For example, acad.mnl was always loaded when acad.CUIX was loaded. Many of the viruses try to propagate by editing acad.mnl by adding a line in it to load itself.

Obviously, this loading style was no longer feasible with the added security. In AutoCAD 2014, we only load the corresponding MNL file if it is found in the TRUSTEDPATHS. When a CUIX file is loaded we:

1. Check if the path of the CUIX is on the TRUSTEDPATHS. If so, search for the MNL in that directory only.
2. If SECURELOAD=1, and if the MNL files are not in Trusted locations, display the File Loading-Security Concern dialog.

If SECURELOAD=2, AutoCAD does not display a warning, and also does not load any MNL file found outside the Trusted locations.

It is recommended that users put shared CUIx files in a read-only location.

Deployment Wizard

The Create Deployment wizard that you find in the installer has been enhanced to allow a CAD Manager to set these settings while deploying AutoCAD. The new settings (same as Executable Code Settings dialog) have been added to the Deployment Wizard Configuration section between the existing Support Content and Search Paths and File Locations sections.

The new section is called “Executable File Settings”

The “Trusted Locations” & “Trusted Domain Locations” branches is added to the existing Search Paths and File Locations section of the Deployment wizard.

LISP function

We have added a new lisp function called (findtrustedfile). It behaves the same as the existing (findfile) function except that it searches the Trusted Locations (TRUSTEDPATHS).

AutoCAD verticals

This functionality behaves exactly the same as in AutoCAD.

AutoCAD OEM 2014

This functionality is available in OEM except the following:

- Existing ACADLSPASDOC system variable and related UI is not exposed.
- No changes to Deployment Wizard.

OEM products have the ability to disable/remove this functionality, including the removal of the system variables and related UI.

AutoCAD for Mac 2014

This functionality is available and behaves nearly identical to AutoCAD for Windows, except there are no UI changes.

The new SECURELOAD, TRUSTEDPATHS & TRUSTEDDOMAINS system variables and the /safemode startup switch is the only way to control the Security settings in AutoCAD for Mac.

AutoCAD for Mac 2014 has no changes to the Preferences (Options) dialog.

AutoCAD LT 2014

This functionality is not editable in LT. LT doesn't have this problem because Lisp & other executable code files cannot be run in AutoCAD LT.

AutoCAD LT hardcodes SECURELOAD=1, and does not expose any of these options in the UI (including the new system variables, Options dialog, or Deployment changes). Users cannot view or edit the system variables. Users won't see the task dialog warning displayed when an executable file attempts to load from outside Trusted Locations (since you can't load executable code files in AutoCAD LT), but these code changes are present in AutoCAD LT, just in case there is a way ☺

The Drawing Feed feature, which utilizes the Javascript API, is present in AutoCAD LT.

AutoCAD 2014 Javascript API

If Javascript is detected from a website outside of Executable Code File Search Path, we display the File Loading- Security Concern dialog.