

# FAB463426

## Revit to Inventor - BIM exchange for custom fabrication hands on Lab

**Paul Munford**

Autodesk PDMC Technical Marketing





**Paul Munford**

@PaulCADmunford

Carpenter

Drafter (AutoCAD & Inventor)

CAD/CAM Manager

Trainer & Consultant

Technical Marketing Manager for Autodesk


# Revit to Inventor - BIM exchange for custom fabrication hands on Lab

## Learning objectives

- Learn how to create a simplified view in Revit, in preparation for referencing the Revit Project into Inventor.
- Learn how to reference a Revit Project File into Inventor to design in context
- Test the ability to update the Revit file, and consume the update inside Inventor
- Round trip the Inventor file back into Revit.



# Downloads



**FAB463426**  
**Revit to Inventor - BIM exchange for custom fabrication hands on Lab**  
Paul Munford, Autodesk

**Learning Objectives**

- Learn how to create a simplified view in Revit, in preparation for referencing the Revit Project into Inventor.
- Learn how to reference a Revit Project File into Inventor to design in context
- Test the ability to update the Revit file, and consume the update inside Inventor
- Round trip the Inventor file back into Revit.

**Description**  
This lab will provide an opportunity for customers to get hands on with the new 'Revit AnyCAD' functionality in Inventor 2021.

We will cover some of the theory of why BIM is important to building product manufacturers and custom fabricators, and level set on our existing BIM exchange tools. We will then work our way through a four-part example use case for referencing Revit data.


We will cover some basic clean-up of the model in Revit. Test what we can do with the data in Inventor.

Marvel as changes made to the Revit model update inside of Inventor, and round trip the Inventor model back into Revit.

This class will suit Inventor users who are confident using the Inventor UI to design and build their models.

This class will be specifically focused on Inventor users who wish to participate in BIM Project and who would like to test the new 'Revit AnyCAD' functionality in Inventor 2021.

**Supporting documents**  
Don't forget to download the dataset and watch the video of the presentation on AU Online.  
<https://www.autodesk.com/autodesk-university/au-online?query=paul+munford>



**Paul Munford**  
Paul Munford is a laugher, dreamer, raconteur, CAD geek and Technical Marketing Manager for Autodesk in the UK.

Paul 's background in manufacturing items for the construction industry gives him a foot in digital prototyping and a foot in Building Information Modeling (BIM).

Paul was a speaker at Autodesk University for the first time in 2012, and he says it's the most fun anyone can have with 250 other people in the room.

[@PaulCADmunford](#)

**What is BIM?**  
'BIM' or Building Information Modelling' is the process of collaborating on a digital, 3D database of information about a building design.

'A BIM' is the Building Information Model itself.

A BIM is created using a BIM authoring tool such as Autodesk Revit, and is compiled from a number of separate 3D model/databases each created by a different specialist - for example an Architectural BIM, a Structural BIM and a Mechanical BIM.


At each design stage the BIMs can be coordinated, so that the overall design has no contradictions before being released to the wider project team.

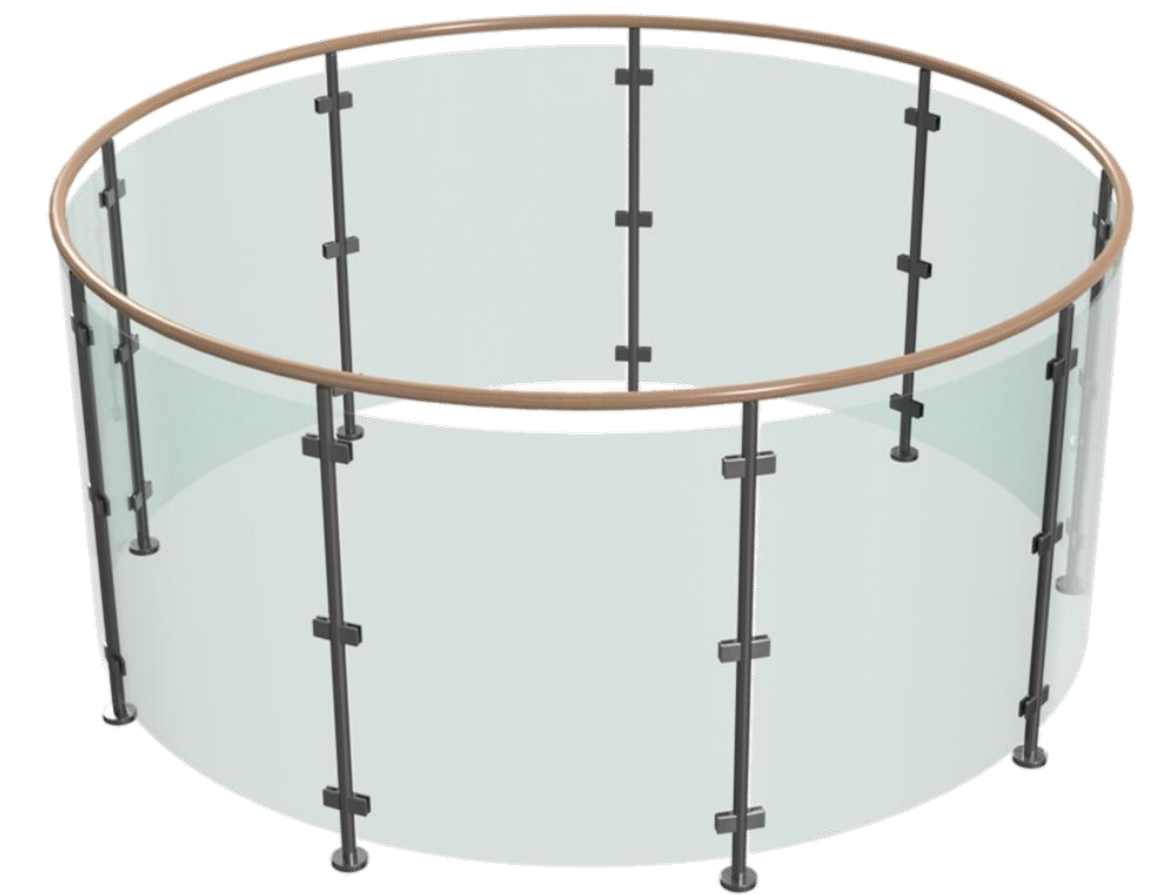
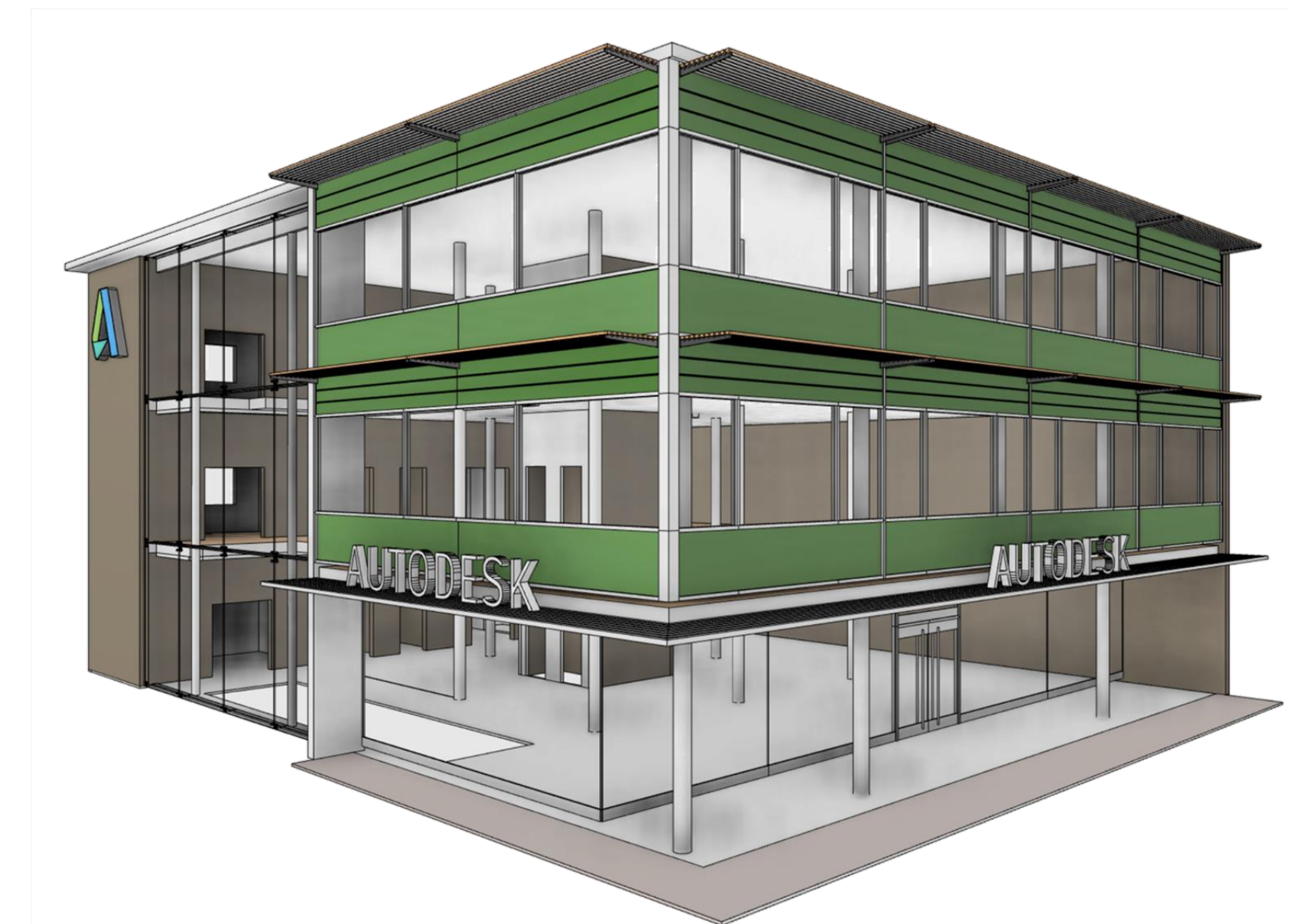
The coordinated BIM is a 3D model that represents a database of information about the design. Schedules, drawings and even simulations or renderings are all 'views' of the same database.

The design BIM can be passed on to the General Contractor, who can continue to update the BIM by incorporating 3D models from trade subcontractors and specialists.

Eventually the 'As Built' BIM can be passed on to the building owner, who can use the BIM database for asset management throughout the buildings lifecycle.

**BIM for Custom Fabricators**  
In this class we will take the part of a custom fabricator on a BIM project. We have been supplied with a Revit BIM to help us work in context with the Architects design.





- Download the handout and dataset from the class page:
- Or use this link: [http://cadso.co/FAB463426\\_DOWNLOAD](http://cadso.co/FAB463426_DOWNLOAD)




# About this lab



Feedback: [Paul.Munford@Autodesk.com](mailto:Paul.Munford@Autodesk.com)



## About this lab

AUTODESK UNIVERSITY

# Exercise 01

## In Revit, creating a Simplified View

In this Exercise we will:

- Open the data set for this exercise
- Browse the Revit project files
- Copy and rename an existing view
- Filter the view
- Use a Section box to crop the view

Handout Page 10

C:\FAB463426-AU2020-Dataset\01 Creating a simplified view in Revit.rvt

Autodesk University
Autodesk University

**Exercise 01- In Revit, creating a simplified View.**

When we bring a Revit project file into Inventor, we don't want to bring in EVERYTHING! The referenced Revit model would be large and unwieldy, and would slow down Inventor.

To reduce the size of the referenced Revit model file in Inventor, we can reference in a saved view of the Revit model, which has been filtered for just the information we are interested in.

In this exercise we will learn how to create view of the Revit model, which shows only the detail we are interested in.

In this Exercise we will:

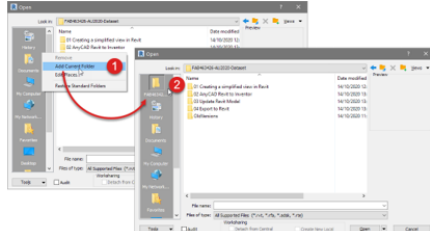
- Open the data set for this exercise
- Browse the Revit project structure
- Copy and rename an existing 3D View
- Filter the view
- Use a Section box to crop the view

**Open the data set for this exercise**

- From the Revit home page, look for 'MODELS' and click 'Open'
- Navigate to:  
C:\FAB463426-AU2020-Dataset\01 Creating a simplified view in Revit\3 LMB select AS-AK-80-ZZ-M3-A-90001.rvt (Revit Project File) and click on the 'Open' button.

*Tip: With the Revit 'Open dialog' open, navigate to 'FAB463426-AU2020-Dataset' folder.*

Now Right mouse button click over the 'places' bar and choose 'Add current folder' This will create a short cut to the class dataset folder in your places bar.



**Browse the Revit project structure**

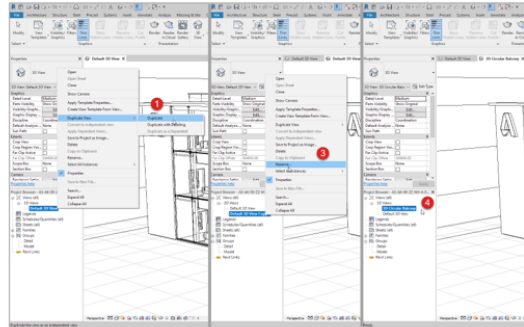
- In Revit, look for the 'Project Browser'
- Next to the 'Views (all)' node, click on the cross (+) symbol to expand the node.
- Next to the '3D Views' node, click on the cross (+) symbol to expand the node.
- Look for the view called 'Default 3D View'
- This view should be the current view.

*Tip: You'll know 'Default 3D View' is current if the view name is in **Bold text**. The view name will also be shown at the tab of the central graphics window.*

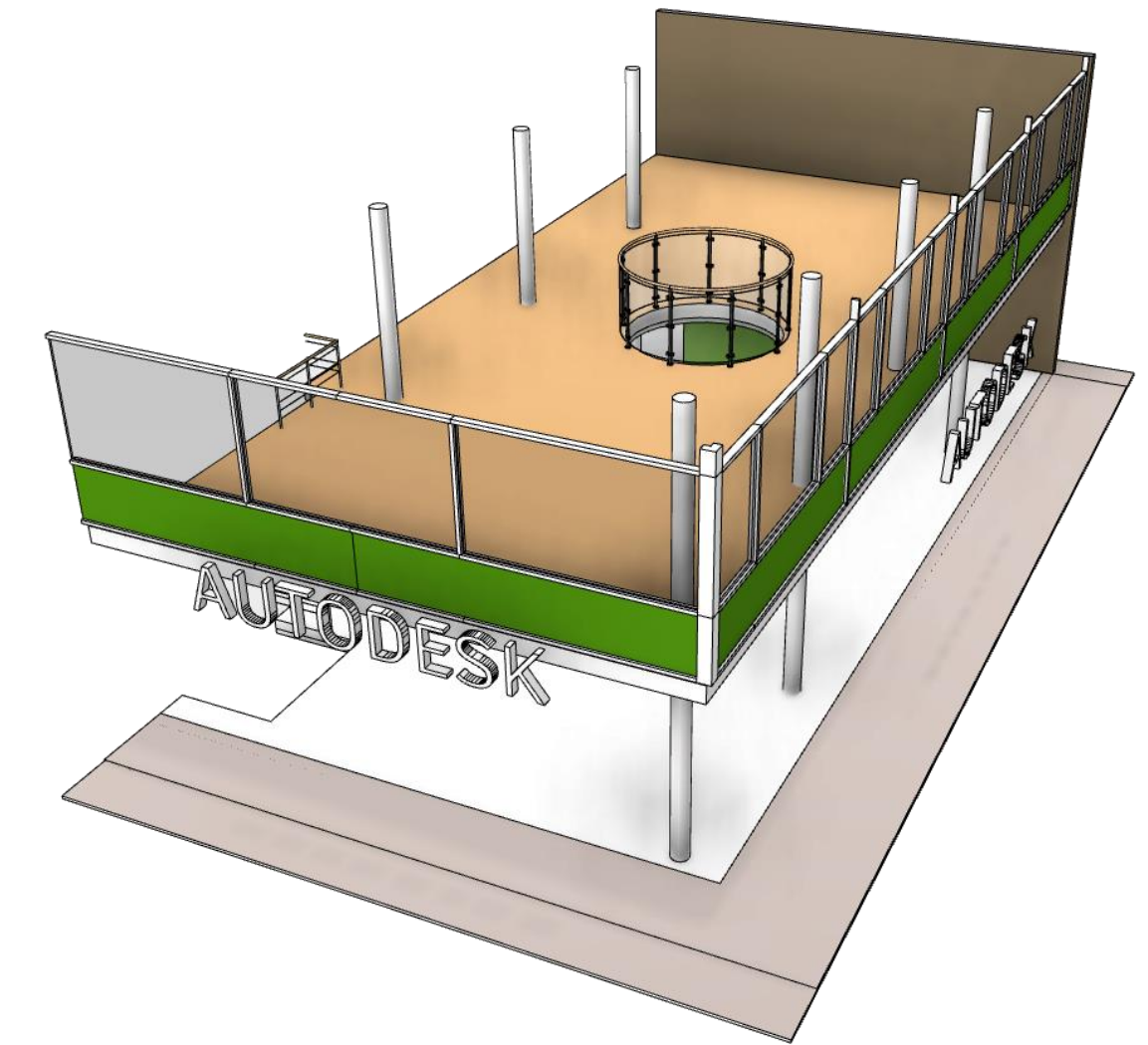
**Copy and rename an existing 3D View**

- Right click on the 'Default 3D View' node and select: 'Duplicate view- Duplicate'
- A new view will be created called 'Default 3D View Copy 1' and Revit will set it as the current view.
- Right click on the 'Default 3D View' node and select: 'Rename'
- Rename 'Default 3D View Copy 1' to '3D Circular Balcony'

*Tip: To change views double Left mouse button click on 'Default 3D View' to make it current. Double LMB click on '3D Circular Balcony' to make it current again for the next exercise.*



11 | Page
12 | Page



## Watch the Demo

# Read the instructions

Have a go!

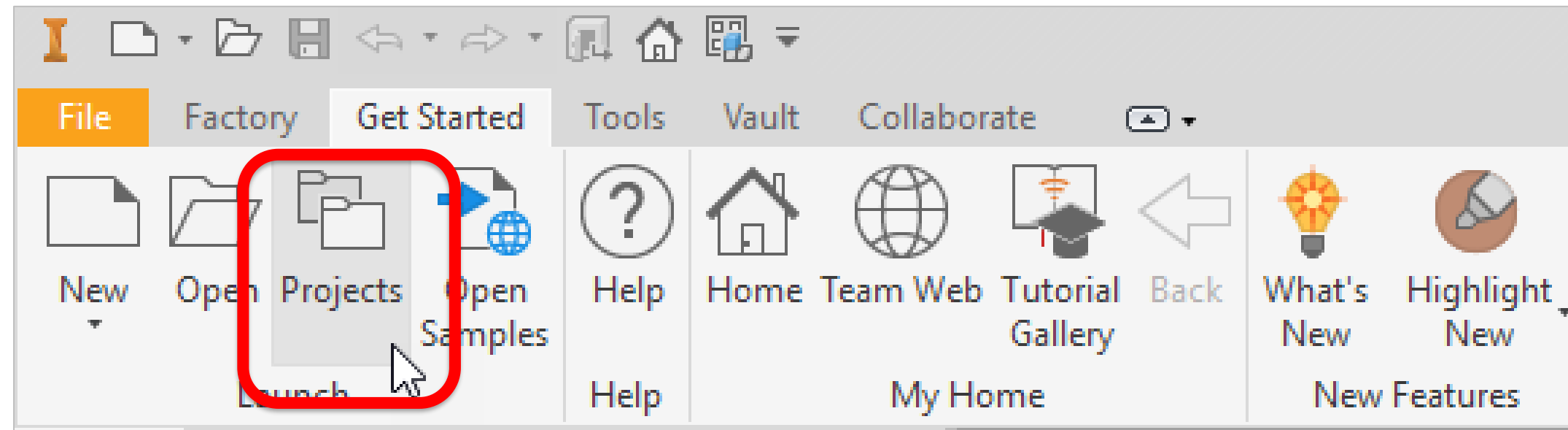
## Repeat

# Prerequisites

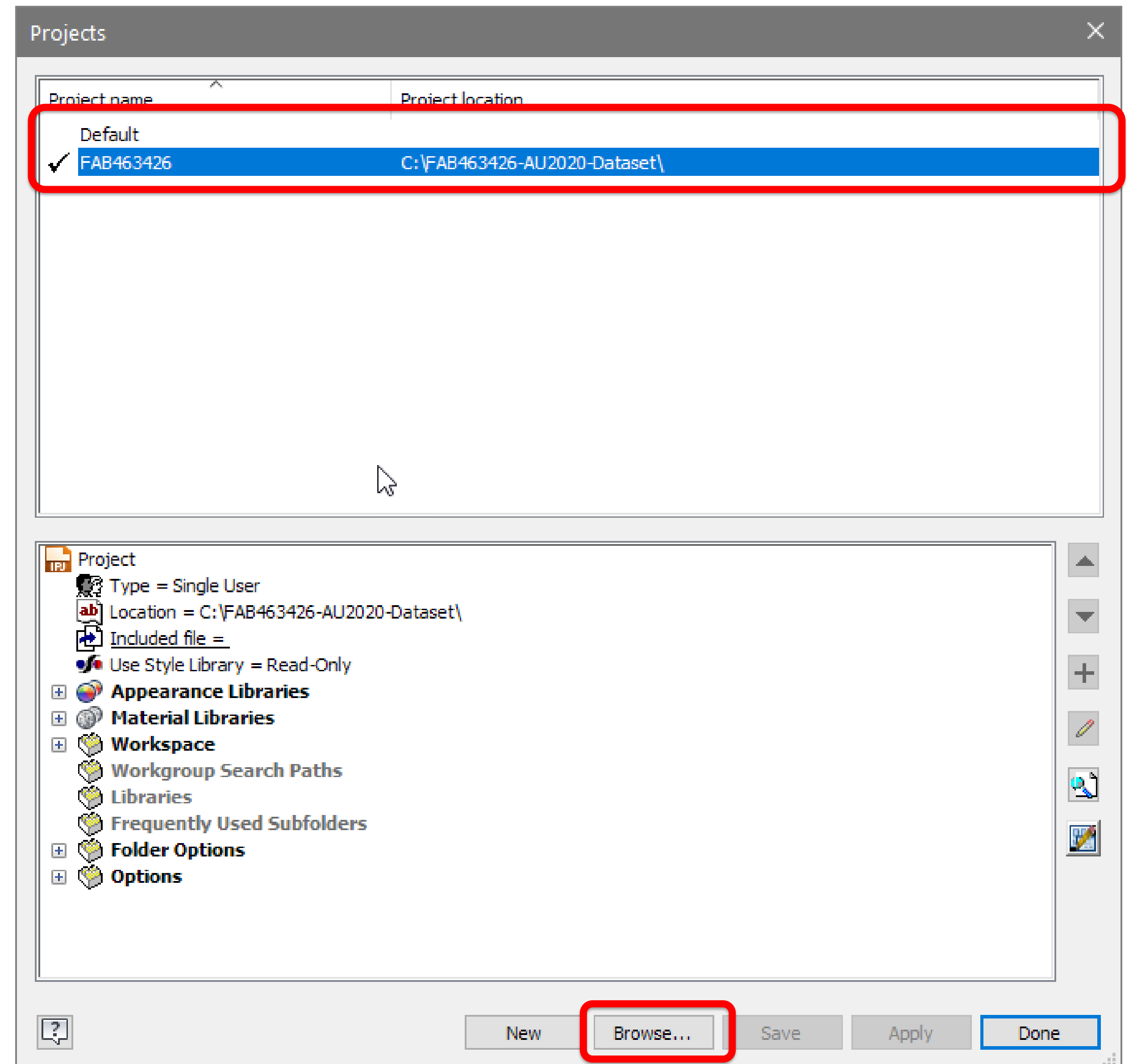
Before we begin, please check that you have the following:

- ☒ Inventor 2021 installed
- ☒ Revit 2021 Installed
- ☒ Dataset downloaded and extracted to **C:\Datasets\FAB463426**
- ☒ Handout
- ☒ This Video of the presentation (for the demonstrations)

# Before we begin



C:\Datasets\FAB463426\FAB463426.ipj





# Q&A

 Comment (1)  


## Comments

PM

Please feel free to post your questions in the comments!

We have a be nice policy  
Please be positive and constructive

POST







YOU HAVE A  
FORMATIVE ROLE  
IN HOW  
BUILDINGS  
ARE  
EXPERIENCED





# 62%

---

of general contractors cited coordination and communication between project teams to negatively impact labor productivity

# 68%

---

of trades cited poor schedule management to negatively impact labor productivity

# 61%

---

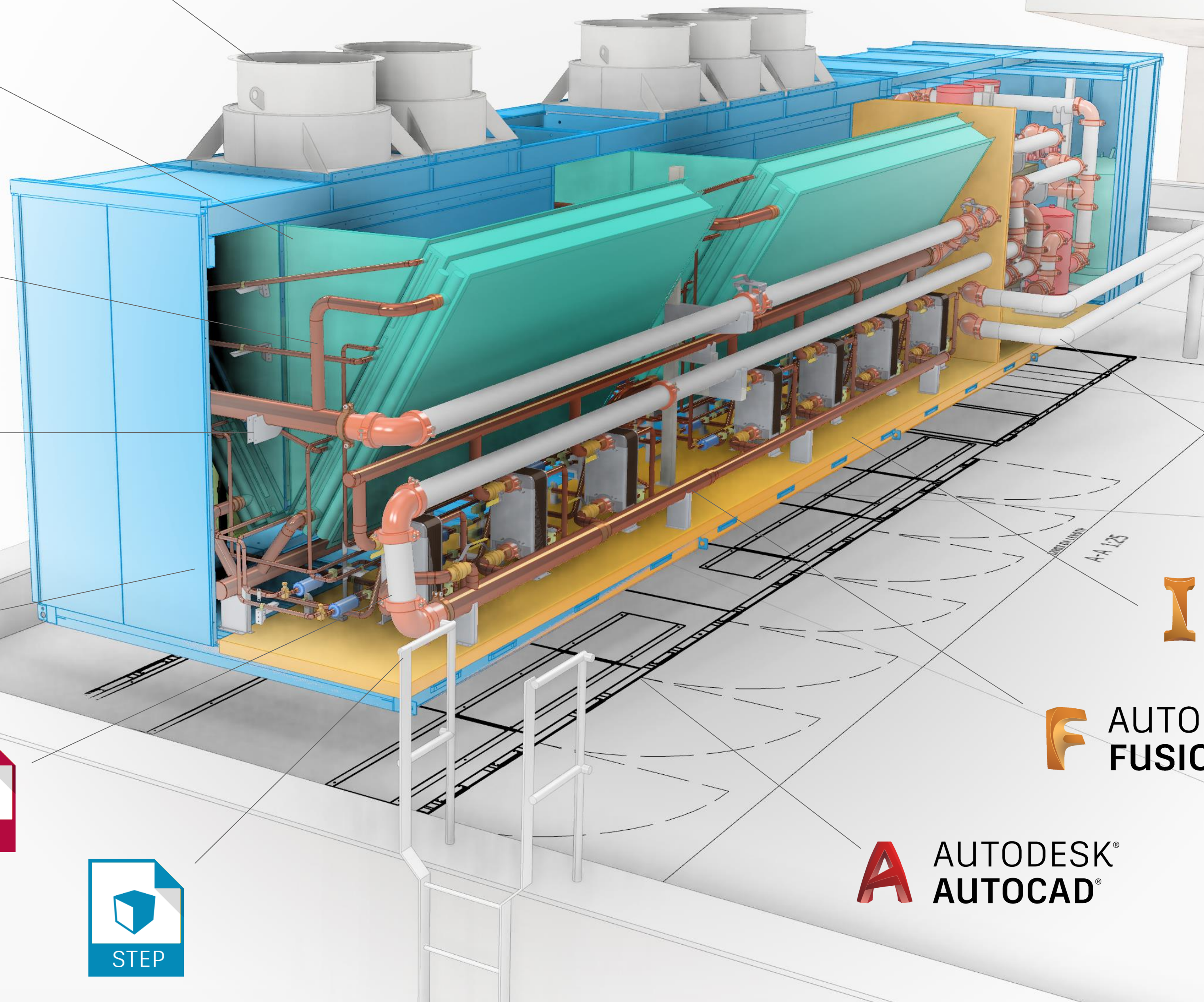
of general contractors cited quality of construction documents to negatively impact labor productivity



Non-Native File  
Change

AnyCAD

Real-time  
update



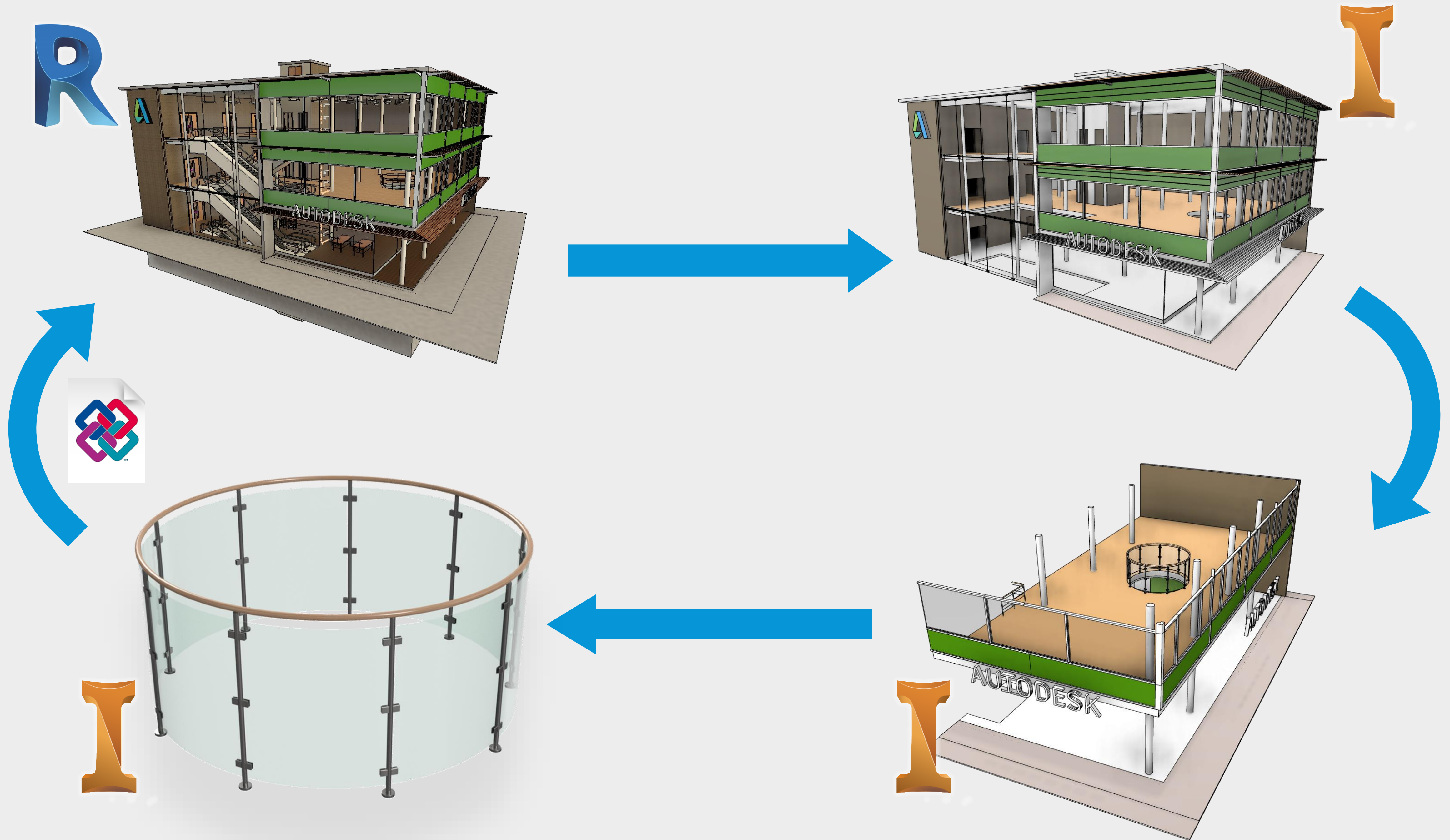
 **AUTODESK®  
REVIT®**

 **AUTODESK®  
INVENTOR®**

 **AUTODESK®  
FUSION 360™**

 **AUTODESK®  
AUTOCAD®**







# Exercise 01

## In Revit, creating a simplified View

In this Exercise we will:

- Open the data set for this exercise
- Browse the Revit project structure
- Copy and rename an existing 3D View
- Filter the view
- Use a Section box to crop the view

Handout Page 10

C:\Datasets\FAB463426\01 Creating a simplified view in Revit\



# Your turn!



Pause the Video and have a go.

Handout Page 10

C:\Datasets\FAB463426\01 Creating a simplified view in Revit\



Autodesk Revit 2021.1.1 - AS-AK-00-ZZ-M3-A-00001.rvt - 3D View: 3D Circular Balcony

File Architecture Structure Steel Precast Systems Insert Annotate Analyze Massing & Site Collaborate View Manage Add-Ins Vault Modify

Modify Select View Templates Visibility/Graphics Filters Thin Lines Show Hidden Lines Remove Hidden Lines Cut Profile Render Render in Cloud Render Gallery 3D View Section Callout Plan Views Elevation Drafting View Duplicate View Legends Schedules Scope Box Sheet View Title Block Revisions Guide Grid Matchline View Reference Switch Windows Close Inactive Views Tab Views Tile Views User Interface

Graphics Presentation Create Sheet Composition Windows

Properties

3D View

3D View: 3D Circular Balcony Edit Type

Graphics

View Scale	1 : 50
Scale Value 1:	50
Detail Level	Medium
Parts Visibility	Show Original
Visibility/Graphics	Edit...
Graphic Display	Edit...
Discipline	Coordination
Show Hidden Li...	By Discipline
Default Analysis ...	None
Sun Path	<input type="checkbox"/>

Extents

Crop View	<input type="checkbox"/>
Crop Region Visi...	<input type="checkbox"/>
Annotation Crop	<input type="checkbox"/>
Far Clip Active	<input type="checkbox"/>
Far Clip Offset	204800.00

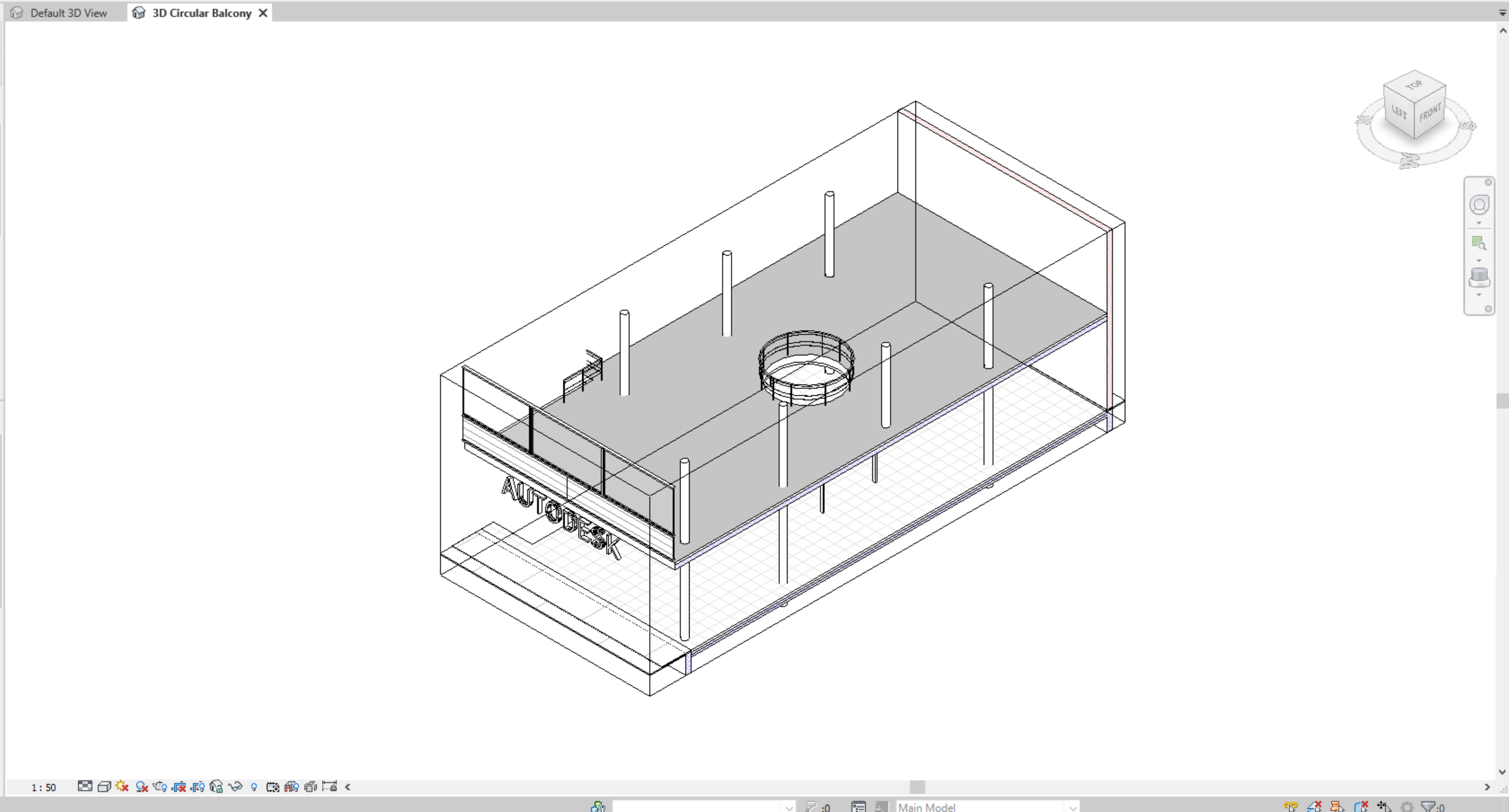
[Properties help](#) Apply

Project Browser - AS-AK-00-ZZ-M3-A-0...

Views (all)

- 3D Views
  - 3D Circular Balcony**
  - Default 3D View
- Legends
- Schedules/Quantities (all)
- Sheets (all)
- Families
  - Analytical Links
  - Annotation Symbols
  - Cable Trays
  - Ceilings
  - Columns
  - Conduits
  - Curtain Panels
  - Curtain Systems
  - Curtain Wall Mullions
  - Detail Items
  - Doors
  - Duct Systems
  - Ducts
  - Electrical Fixtures
  - Flex Ducts

Context Menu





# Exercise 02

## ‘AnyCAD’ a Revit model into Inventor

In this Exercise we will:

- Open the data set for this exercise
- Insert a 3D view of a Revit project file into our Inventor assembly
- Browse the Revit project structure, and change the visibility state of an element
- Insert an Inventor model, and constrain it to the Revit model.

Handout Page 19

C:\ Datasets\FAB463426\02 AnyCAD Revit to Inventor\



# Your turn!

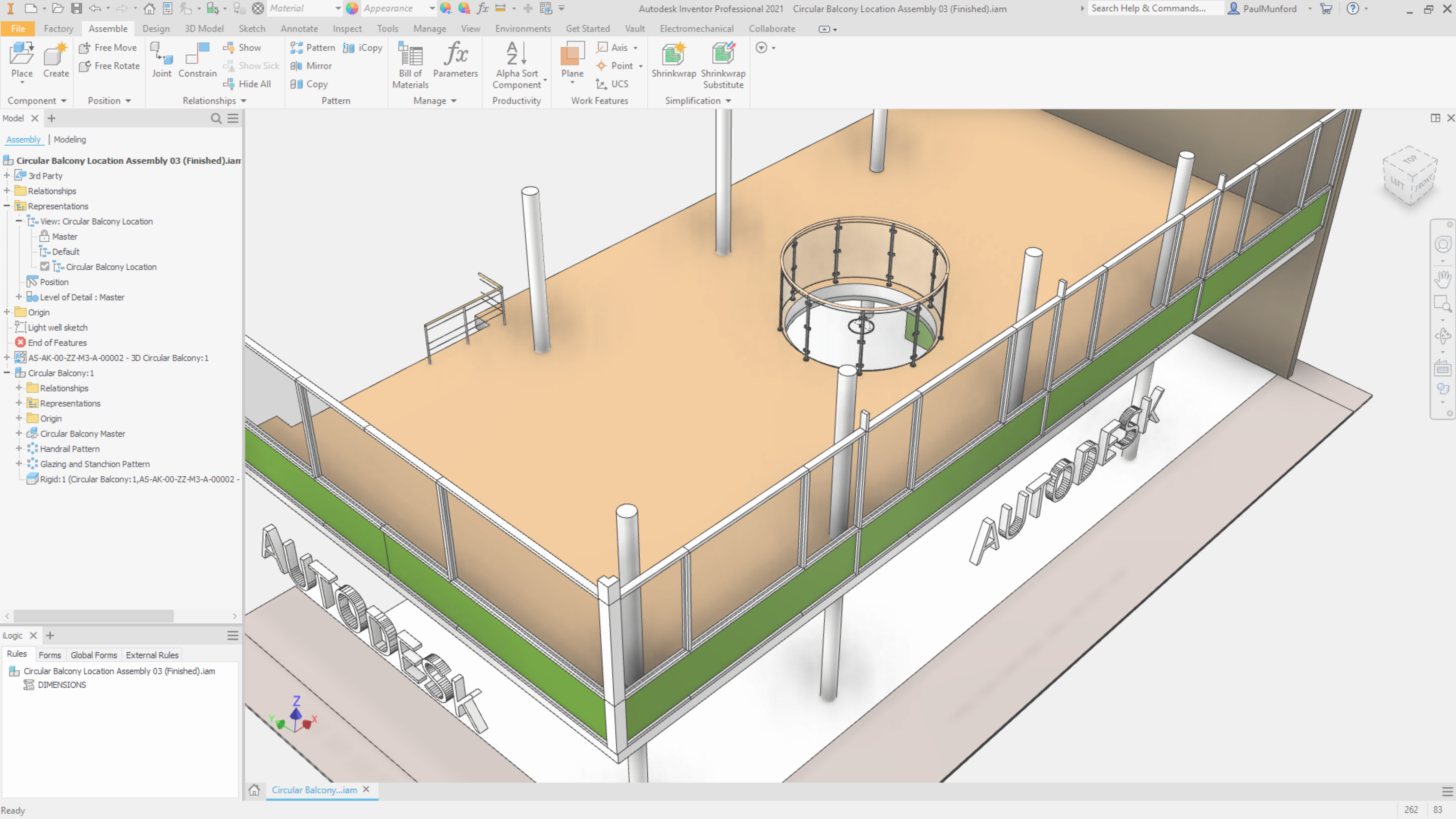


Pause the Video and have a go.

Handout Page 19

C:\Datasets\FAB463426\02 AnyCAD Revit to Inventor\







# Exercise 03

## Update the Revit model

In this Exercise we will:

- Open the data set for this exercise In Inventor
- Open the data set for this exercise In Revit
- Edit the Revit model
- Update the Inventor model

Handout Page 28

C:\ Datasets\FAB463426\03 Update Revit Model\



# Your turn!

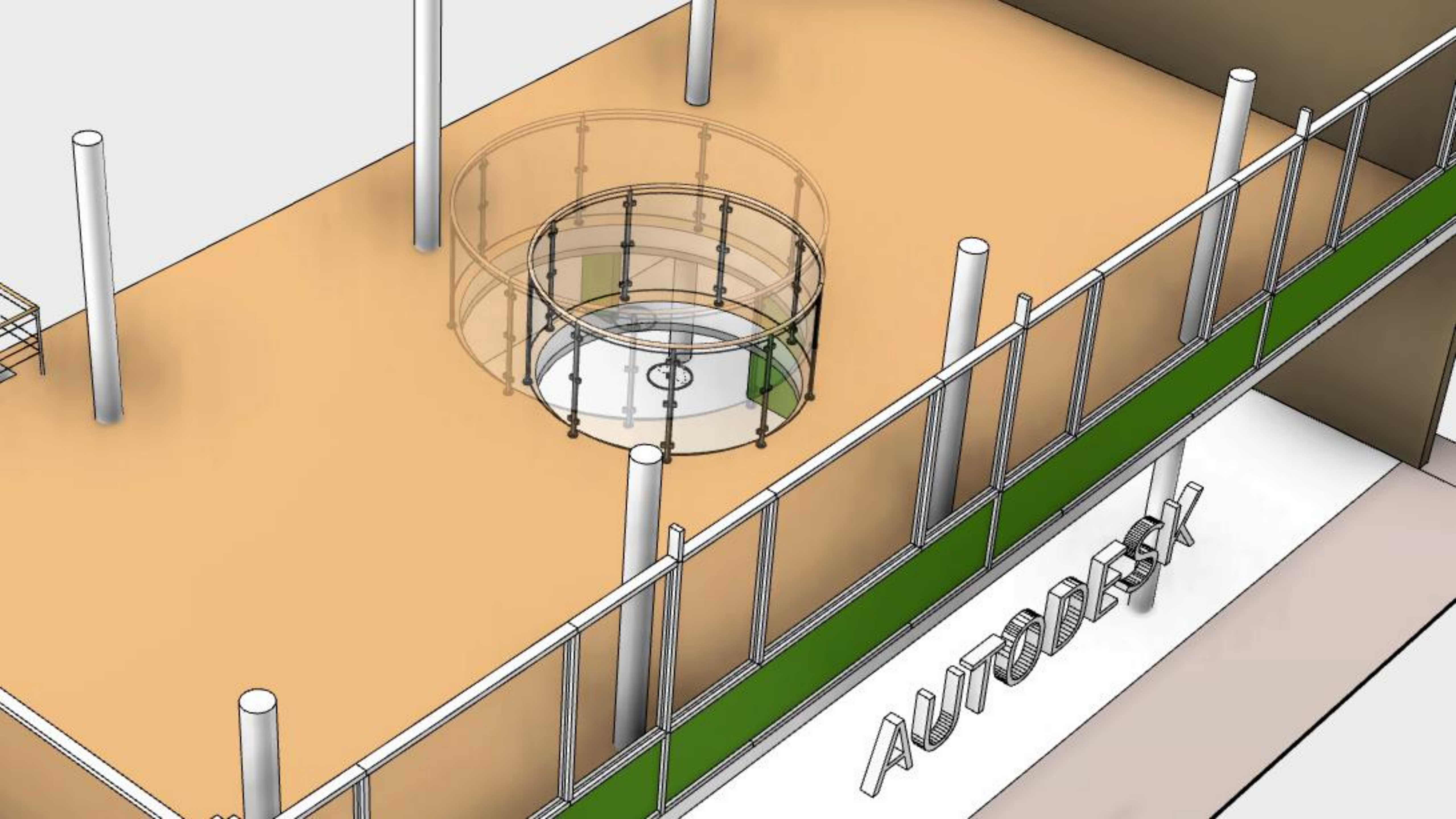


Pause the Video and have a go.

Handout Page 28

C:\ Datasets\FAB463426\03 Update Revit Model\







# Exercise 04

## Export from Inventor and Link into Revit

In this Exercise we will:

- Open the data set for this exercise In Inventor
- Create a new view
- Export the Inventor model to IFC
- Open the data set for this exercise In Revit
- Link the IFC model into Revit.

Handout Page 32

C:\ Datasets\FAB463426\03 Update Revit Model\



# Your turn!



Pause the Video and have a go.

Handout Page 32

C:\ Datasets\FAB463426\03 Update Revit Model\



Properties

3D View

3D View: 3D Circular Balco Edit Type

Graphics

Detail Level	Medium
Parts Visibility	Show Original
Visibility/Graphi...	Edit...
Graphic Display ...	Edit...
Discipline	Coordination
Default Analysis ...	None
Sun Path	<input type="checkbox"/>

Extents

Crop View	<input type="checkbox"/>
Crop Region Visi...	<input type="checkbox"/>
Far Clip Active	<input type="checkbox"/>
Far Clip Offset	304800.00
Scope Box	None
Section Box	<input checked="" type="checkbox"/>

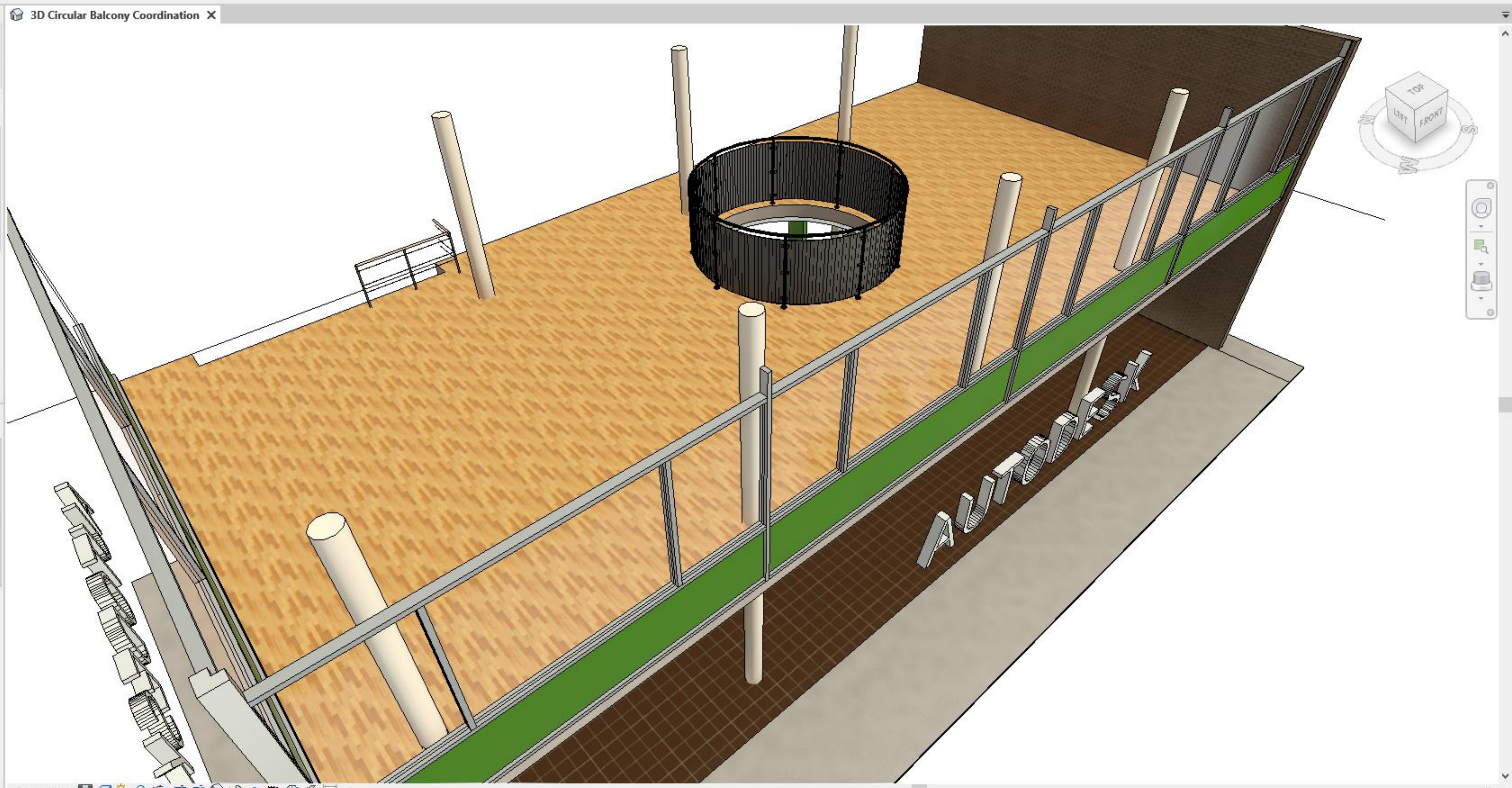
Camera

Rendering Settin Edit

[Properties help](#) Apply

Project Browser - AS-AK-00-ZZ-M3-A-0...

- Views (all)
  - Floor Plans
    - 01 FIRST FLOOR
  - 3D Views
    - 3D Circular Balcony
    - 3D Circular Balcony Coordina**
    - Default 3D View
- Legends
- Schedules/Quantities (all)
- Sheets (all)
- Families
  - Analytical Links
  - Annotation Symbols
  - Cable Trays
  - Ceilings
  - Columns
  - Conduits
  - Curtain Panels
  - Curtain Systems
  - Curtain Wall Mullions
  - Detail Items
  - Doors





# Revit to Inventor - BIM exchange for custom fabrication hands on Lab

## What next?

Make sure that you watch these classes at AU2020:

*‘Anybody Can Do IT: Easily Build Revit Content in Inventor’ by Pete Strycharske*

*‘Looking into the Crystal Ball: The Future of Inventor’ by Garin Gardiner*

*Take a look in the ‘**Resources**’ section of the **handout** for more recommended AU classes, references and help.*



# Revit to Inventor - BIM exchange for custom fabrication hands on Lab

## Summary

- Filter and crop the view in Revit to minimise the size of the dataset we are referencing into Inventor.
- Reference the Revit Project (RVT) file into Inventor using 'AnyCAD'.
- Design in Inventor, using the Revit project for size and location information.
- Export the design from Inventor in a BIM ready format.
- Link the Inventor design into Revit for coordination and review.



## Q&A (My Turn!)

**Q: What version of Inventor is required for 'AnyCAD' for Revit?**

*A: Inventor 2021. Revit 2021 files are recommended.*

**Q: What command references a Revit file into Inventor?**

*A: Place Imported CAD file.*

**Q: How can you find individual Revit entities in the browser?**

*A: Set the select filter to 'Part'. Select an entity in the graphics window, RMB and select 'Find in browser'.*

**Q: Where will you find the 'Export Building Components' command?**

*A: In the BIM Content' Environment.*

**Q: What 'BIM' file formats can Inventor Export?**

*A: RFA (Revit family) and IFC (BIM neutral file format)*





*Please help me by  
recommending this class!*



@PaulCADMunford

# Q&A



## Comments



Please feel free to post your questions in the  
comments!

We have a be nice policy  
Please be positive and constructive

POST





Autodesk and the Autodesk logo are registered trademarks or trademarks of Autodesk, Inc., and/or its subsidiaries and/or affiliates in the USA and/or other countries. All other brand names, product names, or trademarks belong to their respective holders. Autodesk reserves the right to alter product and services offerings, and specifications and pricing at any time without notice, and is not responsible for typographical or graphical errors that may appear in this document.

© 2020 Autodesk. All rights reserved.