

# Item Creation Made Easy... well... kind of

Scott Hendricks

Technical Advisor

Enceptia

# Class summary

This class will cover advanced item-creation techniques for those familiar with the creation of fabrication items. We will walk through a best-practice workflow using the Product Information Editor, price lists, product lists, and labor tables for creating more accurate and complete items.

# Key learning objectives

At the end of this class, you will be able to:

- Learn how to build manufacture specific items using the MAKEPAT command
- Understand the relationship between items and their product list, price list, labor cost, and product information tables
- Learn effective workflows for creating Fabrication software items
- Learn how to leap tall buildings in a single bound

# Collect Data

- Dimensional Data
- Costing Data
- Product Information



# MAKEPAT

- Create item and save to folder
- or Copy existing item from zMasters

**Make:**





# Input data into Excel

- **Product Information**
- **Price List**
- **Labor**
- **Product List**
- **Link**



# Paste data into the Product Information Editor

Configure Import

Requirements

| Field        | Use          |
|--------------|--------------|
| DbId         | ID           |
| Group        | Group        |
| Manufacturer | Manufacturer |
| Product      | Product      |

DbId Maps To: MAP Product Id

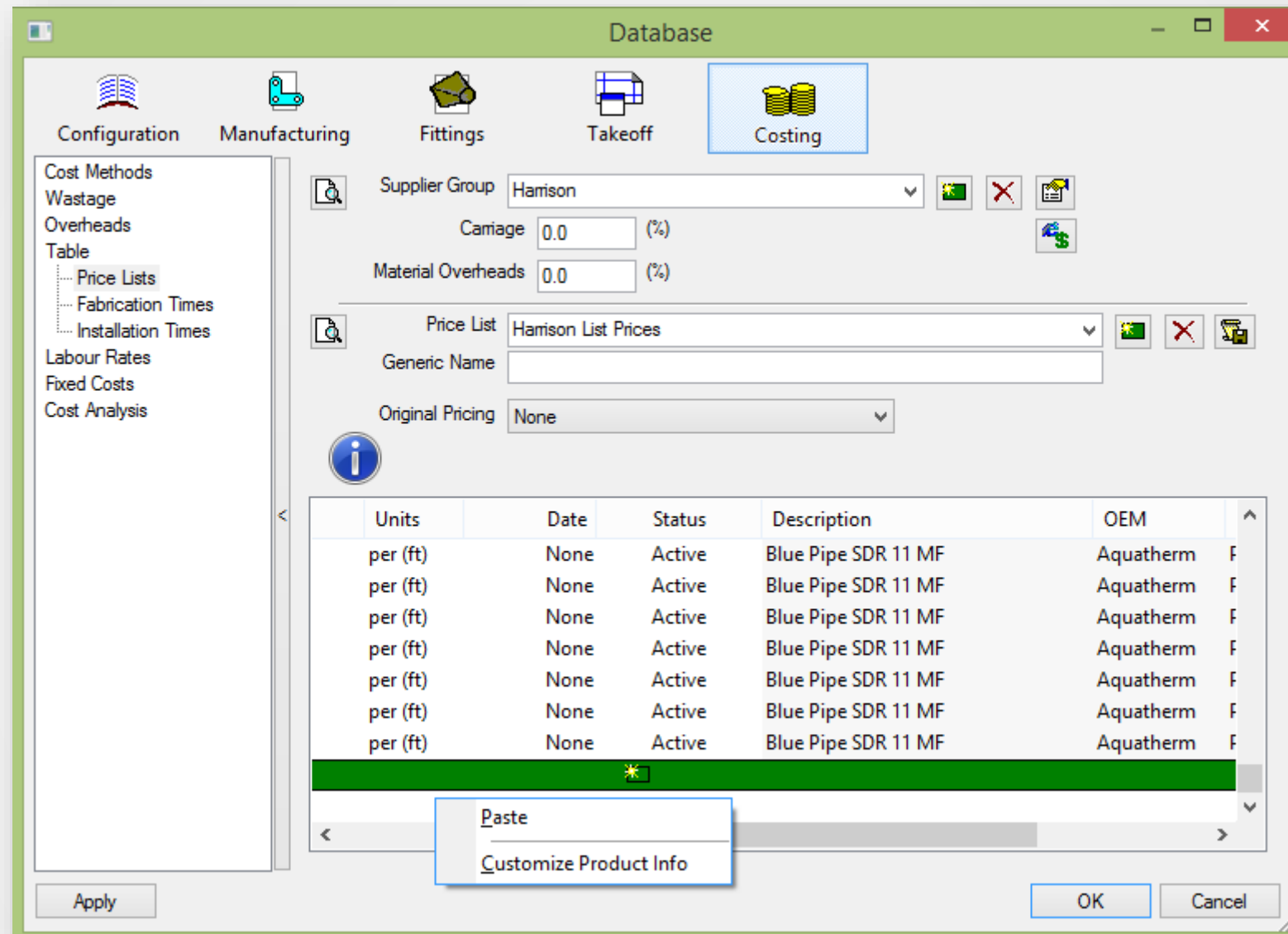
Contents

Data Contains Field Names ☒

| ID         | Group   | Manufacturer | Product | Description   | Size   | Material    | Specification | Inst... | So...    |
|------------|---------|--------------|---------|---------------|--------|-------------|---------------|---------|----------|
| ENC_300... | Mech... | Aquatherm    | Pipe    | Blue Pipe ... | 1"     | Polyprop... | ASTM F 2389   | Fusion  | Blue ... |
| ENC_300... | Mech... | Aquatherm    | Pipe    | Blue Pipe ... | 1-1/4" | Polyprop... | ASTM F 2390   | Fusion  | Blue ... |
| ENC_300... | Mech... | Aquatherm    | Pipe    | Blue Pipe ... | 1-1/2" | Polyprop... | ASTM F 2391   | Fusion  | Blue ... |
| ENC_300... | Mech... | Aquatherm    | Pipe    | Blue Pipe ... | 2"     | Polyprop... | ASTM F 2392   | Fusion  | Blue ... |
| ENC_300... | Mech... | Aquatherm    | Pipe    | Blue Pipe ... | 2-1/2" | Polyprop... | ASTM F 2393   | Fusion  | Blue ... |
| ENC_300... | Mech... | Aquatherm    | Pipe    | Blue Pipe ... | 3"     | Polyprop... | ASTM F 2393   | Fusion  | Blue ... |
| ENC_300... | Mech... | Aquatherm    | Pipe    | Blue Pipe ... | 3-1/2" | Polyprop... | ASTM F 2394   | Fusion  | Blue ... |
| ENC_300... | Mech... | Aquatherm    | Pipe    | Blue Pipe ... | 4"     | Polyprop... | ASTM F 2395   | Fusion  | Blue ... |
| ENC_300... | Mech... | Aquatherm    | Pipe    | Blue Pipe ... | 6"     | Polyprop... | ASTM F 2396   | Fusion  | Blue ... |
| ENC_300... | Mech... | Aquatherm    | Pipe    | Blue Pipe ... | 8"     | Polyprop... | ASTM F 2397   | Fusion  | Blue ... |
| ENC_300... | Mech... | Aquatherm    | Pipe    | Blue Pipe ... | 10"    | Polyprop... | ASTM F 2398   | Fusion  | Blue ... |
| ENC_300... | Mech... | Aquatherm    | Pipe    | Blue Pipe ... | 12"    | Polyprop... | ASTM F 2399   | Fusion  | Blue ... |
| ENC_300... | Mech... | Aquatherm    | Pipe    | Blue Pipe ... | 14"    | Polyprop... | ASTM F 2400   | Fusion  | Blue ... |
| ENC_300... | Mech... | Aquatherm    | Pipe    | Blue Pipe ... | 16"    | Polyprop... | ASTM F 2401   | Fusion  | Blue ... |

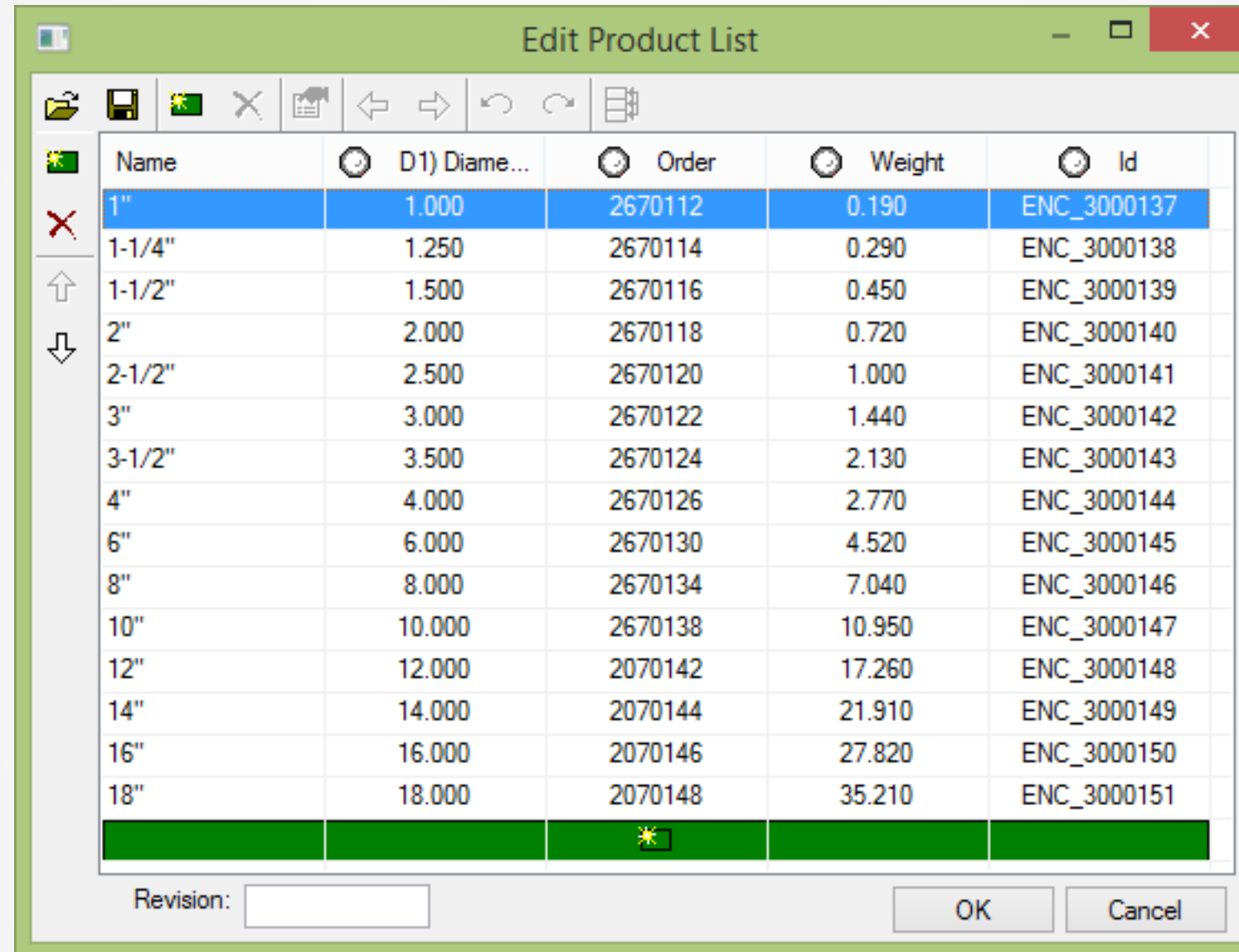
OK Cancel

# Paste data into Pricing and Labor Tables





# Product list item



| Name   | D1) Diame... | Order   | Weight | Id          |
|--------|--------------|---------|--------|-------------|
| 1"     | 1.000        | 2670112 | 0.190  | ENC_3000137 |
| 1-1/4" | 1.250        | 2670114 | 0.290  | ENC_3000138 |
| 1-1/2" | 1.500        | 2670116 | 0.450  | ENC_3000139 |
| 2"     | 2.000        | 2670118 | 0.720  | ENC_3000140 |
| 2-1/2" | 2.500        | 2670120 | 1.000  | ENC_3000141 |
| 3"     | 3.000        | 2670122 | 1.440  | ENC_3000142 |
| 3-1/2" | 3.500        | 2670124 | 2.130  | ENC_3000143 |
| 4"     | 4.000        | 2670126 | 2.770  | ENC_3000144 |
| 6"     | 6.000        | 2670130 | 4.520  | ENC_3000145 |
| 8"     | 8.000        | 2670134 | 7.040  | ENC_3000146 |
| 10"    | 10.000       | 2670138 | 10.950 | ENC_3000147 |
| 12"    | 12.000       | 2070142 | 17.260 | ENC_3000148 |
| 14"    | 14.000       | 2070144 | 21.910 | ENC_3000149 |
| 16"    | 16.000       | 2070146 | 27.820 | ENC_3000150 |
| 18"    | 18.000       | 2070148 | 35.210 | ENC_3000151 |
|        |              |         |        |             |

Revision:

OK Cancel

# Attach hyperlink



