

Walk-in Slide: AU 2014 Social Media Feed

1. Click on the link below, this will open your web browser

<http://aucache.autodesk.com/social/visualization.html>

2. Use “Extended Display” to project the website on screen if you plan to work on your computer. Use “Duplicate” to display same image on screen and computer.

Updating a Price List in Fabrication ESTmep

Lyle Janda - Enceptia

Greg Murphy – Murphy Company

Class summary

- This class covers the use of price lists and pricing services to update pricing within Fabrication ESTmep. We will cover Harrison Pricing Service to update existing price list. We will examine the Product Information Editor, ID Codes and how pricing information is linked to items in ESTmep. We will also touch on some best practices, limitations and advantages. We'll show you an example of how to access the Harrison Price list and import it into ESTmep to update pricing.

Key learning objectives

At the end of this class, you will be able to:

- Access and download content from www.building3dcontent.com.
- Access and download content within Fabrication ESTmep.
- Import a Service.
- View and modify the Product Information Editor.
- Modify and update a price list.
- Modify and customize the Item and Item Folder viewer.
- Change the Price List on multiple items.
- Navigate through E-Office and download the HPH update.
- Navigate through CINX and download the HPH update.

Downloading Content

- www.building3dcontent.com

The screenshot shows the Autodesk Building 3D Content website. At the top left is the Autodesk logo. To the right are links for Home, Advanced Search, and Discussion Forum. Below these is a search bar with the placeholder text "Enter Search Keywords" and a "Search" button. The main content area is divided into two columns. The left column has a "Welcome to Building 3D Content" section, followed by a "What is Building 3D Content..?" section explaining the database, and then a "Featured Manufacturers" section displaying a grid of logos including Ability, actionair, alumasc, ANVIL INTERNATIONAL, Apollo Valves, BELIMO, Bestobell Valves, BLÜCHER DRAINAGE SYSTEMS, boltex mfg. co., BOSS, BSB, CABLOFIL, CHARLOTTE PIPE AND FOUNDRY COMPANY, CRANE, and CTS FABRICATION USA. The right column features an "Autodesk® Fabrication" section with a cover image for "AUTODESK® FABRICATION CAMDUCT™ 2014" and a description of the tool set. Below this is a "Latest Content" section listing recent uploads with details like "[Imperial]_Mechanical - Boltex-Flanges-Carbon Steel_v1" and "View" links.

AUTODESK. Home | Advanced Search | Discussion Forum

Search
Enter Search Keywords Search

Welcome to Building 3D Content

What is Building 3D Content..?
Building 3D Content is an Extensive Database of 3D Models, for use with the Autodesk® Fabrication range of products. 3D Content can be searched, downloaded and then integrated into your Autodesk® Fabrication Solution.

Featured Manufacturers

Ability actionair alumasc ANVIL INTERNATIONAL Apollo Valves BELIMO Bestobell Valves BLÜCHER DRAINAGE SYSTEMS boltex mfg. co. BOSS BSB CABLOFIL CHARLOTTE PIPE AND FOUNDRY COMPANY CRANE CTS FABRICATION USA

Autodesk® Fabrication

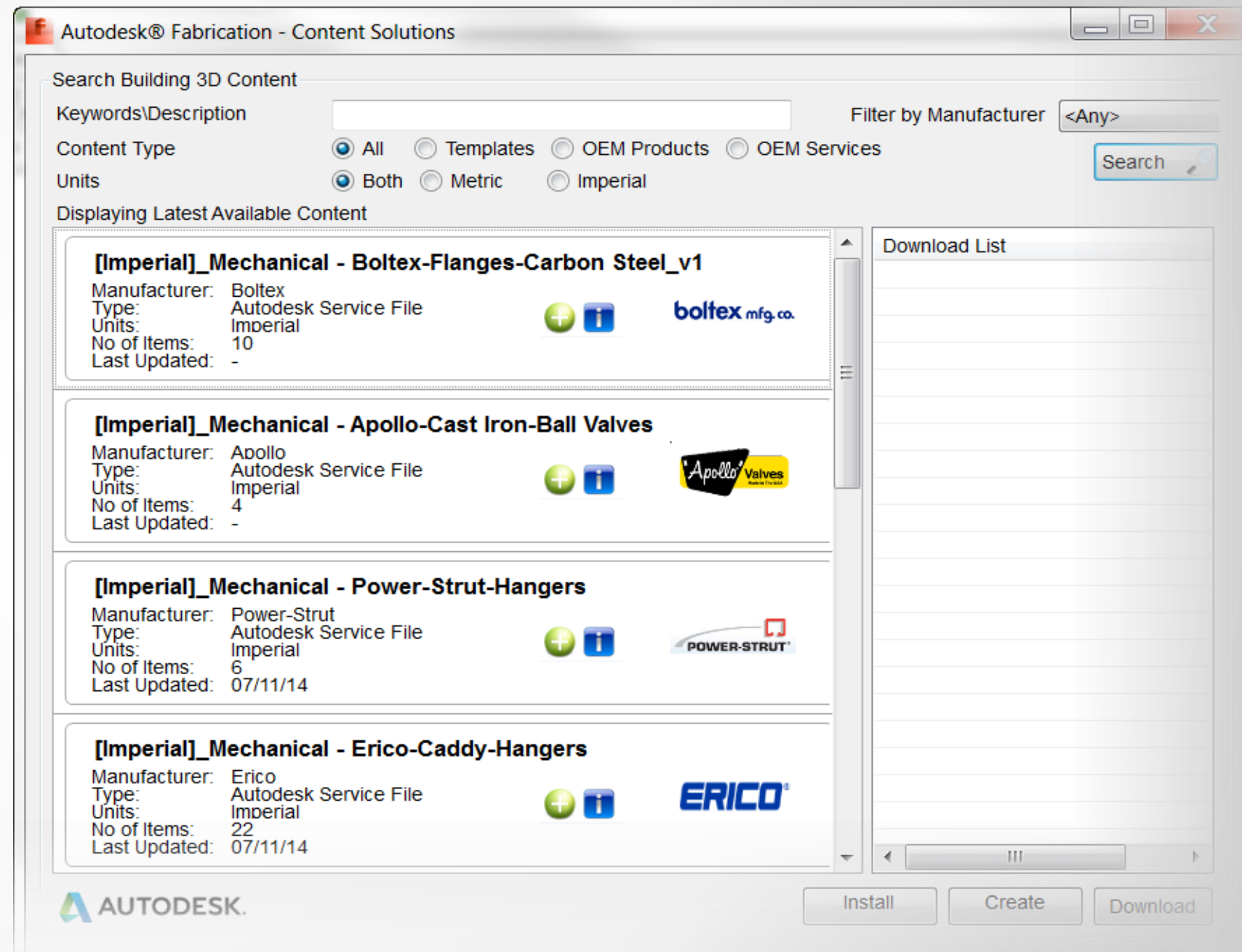
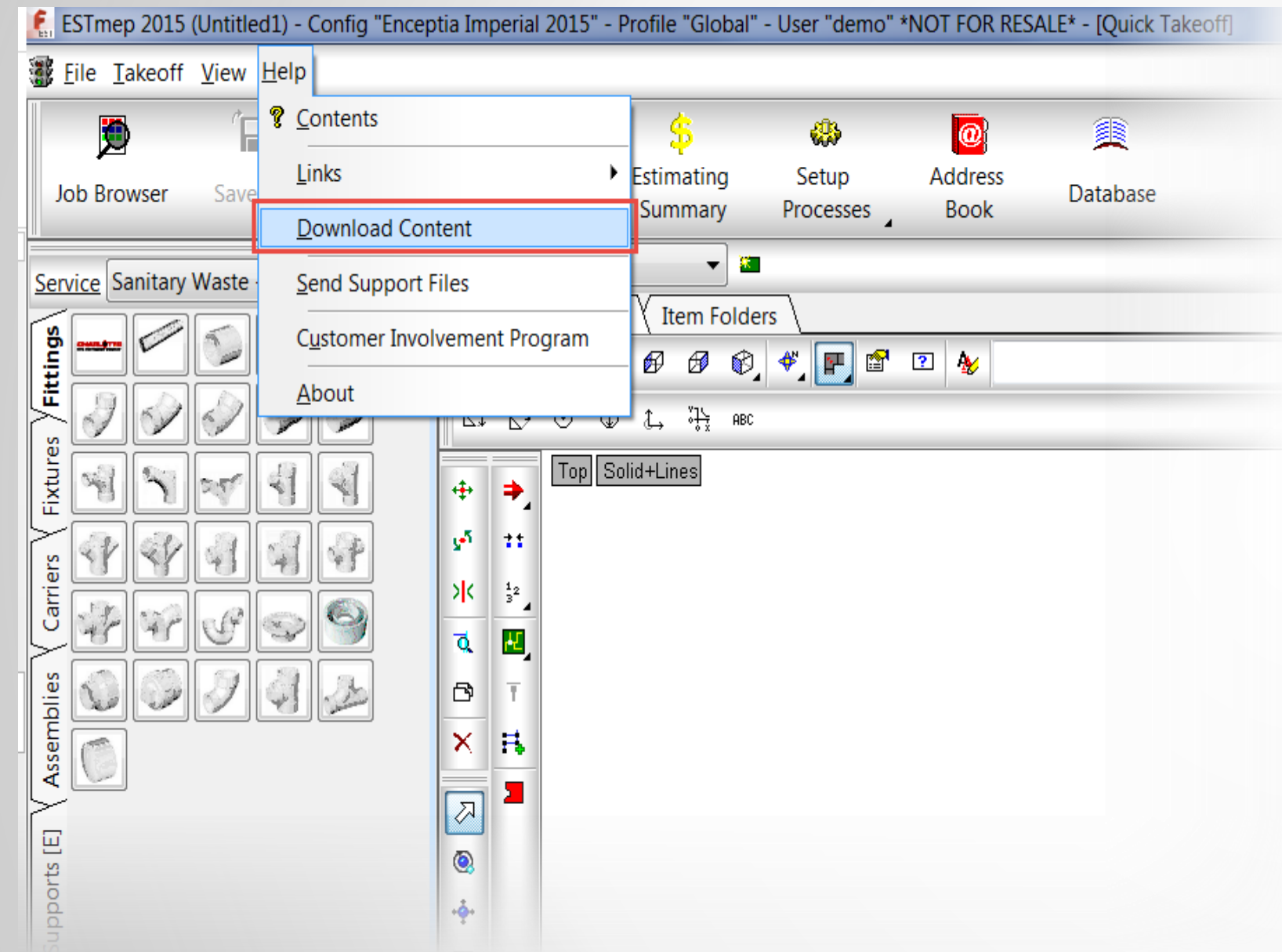
AUTODESK® FABRICATION CAMDUCT™ 2014
Help control your ductwork manufacturing production line using a comprehensive tool set and extensive libraries of parametric components.
[Click here for More Info](#)

Latest Content

Manufacturer	Content Name	Date	Action
boltex mfg. co.	[Imperial]_Mechanical - Boltex-Flanges-Carbon Steel_v1	11/11/2014	View
Apollo Valves	[Imperial]_Mechanical - Apollo-Cast Iron-Ball Valves	11/7/2014	View
ERICO	[Imperial]_Mechanical - Erico-Caddy-Hangers	11/7/2014	View
Milwaukee	[Imperial]_Mechanical - Milwaukee-Brass-Valves		

Quicklinks

■ Downloading content directly into Fabrication ESTmep



Product Information Editor

■ Product Information

Product Info Editor (C:/Users/Public/Documents/Enceptia/Fabrication 2015/Working Database/COMMON/prodinfo.map)

File Edit Help

Edit Groups Show All Show All Show All Show All Show All Show All Show All Show All Show All Show All Show All

Translation English

Id	Group	Manufacturer	Product	Description	Size	Material	Specification	Install Type	Source Des...	Range	Finish
ADSK_3006...	Mechanical	Nibco	Fig.4503	No4503 - Ad...	4"	PVC	ASTM D1785	Solvent Wel...	No4503 - Ad...	Chemtrol PVC	No Finish
ADSK_3006...	Mechanical	Nibco	Fig.4504	No4504 - Ad...	1/2"	PVC	ASTM D1785	Solvent Wel...	No4504 - Ad...	Chemtrol PVC	No Finish
ADSK_3006...	Mechanical	Nibco	Fig.4504	No4504 - Ad...	3/4"	PVC	ASTM D1785	Solvent Wel...	No4504 - Ad...	Chemtrol PVC	No Finish
ADSK_3006...	Mechanical	Nibco	Fig.4504	No4504 - Ad...	1"	PVC	ASTM D1785	Solvent Wel...	No4504 - Ad...	Chemtrol PVC	No Finish
ADSK_3006...	Mechanical	Nibco	Fig.4504	No4504 - Ad...	1-1/4"	PVC	ASTM D1785	Solvent Wel...	No4504 - Ad...	Chemtrol PVC	No Finish
ADSK_3006...	Mechanical	Nibco	Fig.4504	No4504 - Ad...	1-1/2"	PVC	ASTM D1785	Solvent Wel...	No4504 - Ad...	Chemtrol PVC	No Finish
ADSK_3006...	Mechanical	Nibco	Fig.4504	No4504 - Ad...	2"	PVC	ASTM D1785	Solvent Wel...	No4504 - Ad...	Chemtrol PVC	No Finish
ADSK_3006...	Mechanical	Nibco	Fig.4504	No4504 - Ad...	2-1/2"	PVC	ASTM D1785	Solvent Wel...	No4504 - Ad...	Chemtrol PVC	No Finish
ADSK_3006...	Mechanical	Nibco	Fig.4504	No4504 - Ad...	3"	PVC	ASTM D1785	Solvent Wel...	No4504 - Ad...	Chemtrol PVC	No Finish
ADSK_3006...	Mechanical	Nibco	Fig.4504	No4504 - Ad...	4"	PVC	ASTM D1785	Solvent Wel...	No4504 - Ad...	Chemtrol PVC	No Finish
ADSK_3006...	Mechanical	Nibco	Fig.4506	No4506 - Ell ...	1/4"	PVC	ASTM D1785	Solvent Wel...	No4506 - Ell ...	Chemtrol PVC	No Finish
ADSK_3006...	Mechanical	Nibco	Fig.4506	No4506 - Ell ...	1/2"	PVC	ASTM D1785	Solvent Wel...	No4506 - Ell ...	Chemtrol PVC	No Finish
ADSK_3006...	Mechanical	Nibco	Fig.4506	No4506 - Ell ...	3/4"	PVC	ASTM D1785	Solvent Wel...	No4506 - Ell ...	Chemtrol PVC	No Finish
ADSK_3006...	Mechanical	Nibco	Fig.4506	No4506 - Ell ...	1"	PVC	ASTM D1785	Solvent Wel...	No4506 - Ell ...	Chemtrol PVC	No Finish
ADSK_3006...	Mechanical	Nibco	Fig.4506	No4506 - Ell ...	1-1/4"	PVC	ASTM D1785	Solvent Wel...	No4506 - Ell ...	Chemtrol PVC	No Finish
ADSK_3006...	Mechanical	Nibco	Fig.4506	No4506 - Ell ...	1-1/2"	PVC	ASTM D1785	Solvent Wel...	No4506 - Ell ...	Chemtrol PVC	No Finish
ADSK_3006...	Mechanical	Nibco	Fig.4506	No4506 - Ell ...	2"	PVC	ASTM D1785	Solvent Wel...	No4506 - Ell ...	Chemtrol PVC	No Finish
ADSK_3006...	Mechanical	Nibco	Fig.4506	No4506 - Ell ...	2-1/2"	PVC	ASTM D1785	Solvent Wel...	No4506 - Ell ...	Chemtrol PVC	No Finish
ADSK_3006...	Mechanical	Nibco	Fig.4506	No4506 - Ell ...	3"	PVC	ASTM D1785	Solvent Wel...	No4506 - Ell ...	Chemtrol PVC	No Finish
ADSK_3006...	Mechanical	Nibco	Fig.4506	No4506 - Ell ...	4"	PVC	ASTM D1785	Solvent Wel...	No4506 - Ell ...	Chemtrol PVC	No Finish
ADSK_3006...	Mechanical	Nibco	Fig.4506	No4506 - Ell ...	6"	PVC	ASTM D1785	Solvent Wel...	No4506 - Ell ...	Chemtrol PVC	No Finish
ADSK_3006...	Mechanical	Nibco	Fig.4506	No4506 - Ell ...	8"	PVC	ASTM D1785	Solvent Wel...	No4506 - Ell ...	Chemtrol PVC	No Finish
ADSK_3006...	Mechanical	Nibco	Fig.4506	No4506 - Ell ...	10"	PVC	ASTM D1785	Solvent Wel...	No4506 - Ell ...	Chemtrol PVC	No Finish
ADSK_3006...	Mechanical	Nibco	Fig.4506	No4506 - Ell ...	12"	PVC	ASTM D1785	Solvent Wel...	No4506 - Ell ...	Chemtrol PVC	No Finish
ADSK_3006...	Mechanical	Nibco	Fig.4506-3-3	No4506-3-3 ...	1/4"	PVC	ASTM D1785	Solvent Wel...	No4506-3-3 ...	Chemtrol PVC	No Finish
ADSK_3006...	Mechanical	Nibco	Fig.4506-3-3	No4506-3-3 ...	1/2"	PVC	ASTM D1785	Solvent Wel...	No4506-3-3 ...	Chemtrol PVC	No Finish
ADSK_3006...	Mechanical	Nibco	Fig.4506-3-3	No4506-3-3 ...	3/4"	PVC	ASTM D1785	Solvent Wel...	No4506-3-3 ...	Chemtrol PVC	No Finish
ADSK_3006...	Mechanical	Nibco	Fig.4506-3-3	No4506-3-3 ...	1"	PVC	ASTM D1785	Solvent Wel...	No4506-3-3 ...	Chemtrol PVC	No Finish
ADSK_3006...	Mechanical	Nibco	Fig.4506-3-3	No4506-3-3 ...	1-1/4"	PVC	ASTM D1785	Solvent Wel...	No4506-3-3 ...	Chemtrol PVC	No Finish
ADSK_3006...	Mechanical	Nibco	Fig.4506-3-3	No4506-3-3 ...	1-1/2"	PVC	ASTM D1785	Solvent Wel...	No4506-3-3 ...	Chemtrol PVC	No Finish
ADSK_3006...	Mechanical	Nibco	Fig.4506-3-3	No4506-3-3 ...	2"	PVC	ASTM D1785	Solvent Wel...	No4506-3-3 ...	Chemtrol PVC	No Finish
ADSK_3006...	Mechanical	Nibco	Fig.4506-3-3	No4506-3-3 ...	2-1/2"	PVC	ASTM D1785	Solvent Wel...	No4506-3-3 ...	Chemtrol PVC	No Finish
ADSK_3006...	Mechanical	Nibco	Fig.4506-3-3	No4506-3-3 ...	3"	PVC	ASTM D1785	Solvent Wel...	No4506-3-3 ...	Chemtrol PVC	No Finish

■ Supplier Information

Product Info Editor (C:/Users/Public/Documents/Enceptia/Fabrication 2015/Working Database/COMMON/prodinfo.map)

File Edit Help

Translation English

Id	4) UPC Code	1) Manufacturer Code	2) OEM Code	3) Harrison
ADSK_30068580	039923155405	159-CA04550	CA04550	017NI4116
ADSK_30068591	039923155948	159-CA04600	CA04600	017NI4126
ADSK_30068592	039923156006	159-CA04650	CA04650	017NI4128
ADSK_30068593	039923156068	159-CA04700	CA04700	017NI4130
ADSK_30068594	039923156129	159-CA04750	CA04750	017NI4132
ADSK_30068595	039923156181	159-CA04800	CA04800	017NI4134
ADSK_30068596	039923156242	159-CA04850	CA04850	017NI4136
ADSK_30068597	039923156303	159-CA04852	CA04852	017NI4138
ADSK_30068598	039923156365	159-CA04854	CA04854	017NI4140
ADSK_30068599	039923156402	159-CA04856	CA04856	017NI4142
ADSK_30068601	039923161840	159-CA04900	CA04900	017NI3804
ADSK_30068602	039923161888	159-CA04950	CA04950	017NI3808
ADSK_30068603	039923161901	159-CA05000	CA05000	017NI3810
ADSK_30068604	039923161925	159-CA05050	CA05050	017NI3812
ADSK_30068605	039923161949	159-CA05100	CA05100	017NI3814
ADSK_30068606	039923161963	159-CA05150	CA05150	017NI3816
ADSK_30068607	039923161987	159-CA05200	CA05200	017NI3818
ADSK_30068608	039923162007	159-CA05250	CA05250	017NI3820
ADSK_30068609	039923162021	159-CA05300	CA05300	017NI3822
ADSK_30068610	039923162045	159-CA05350	CA05350	017NI3824
ADSK_30068611	039923162083	159-CA05400	CA05400	017NI3826
ADSK_30068612	039923162106	159-CA05450	CA05450	017NI3828
ADSK_30068613	039923162120	159-CA05460	CA05460	017NI3830
ADSK_30068614		159-CA05470	"CA05470	
ADSK_30068621	039923162243	159-CA05500	CA05500	017NI3856
ADSK_30068622	039923162281	159-CA05550	CA05550	017NI3860
ADSK_30068623	039923162304	159-CA05600	CA05600	017NI3862
ADSK_30068624	039923162328	159-CA05650	CA05650	017NI3864
ADSK_30068625	039923162342	159-CA05700	CA05700	017NI3866

■ Enceptia Table Builder



Product Information

ID	Group	Manufacturer	Product	Description	Size	Material	Specification	Install Type	Source Description	Range	Finish	Suppliers				
												ID	UPC Code	Manufacture Code	OEM Code	Harrison
ADSK_40053591	Public Health	Charlotte	No.NH2	NoNH2 - Pipe 10'	1-1/2"	Cast Iron	ASTM A888	Solvent Welded	NoNH2 - Pipe 10'	No-Hub	No Finish	ADSK_40053591	61194200128	162-NH-2_1.5"x10'	NH-2_1.5"x10'	022CH0156
ADSK_40053592	Public Health	Charlotte	No.NH2	NoNH2 - Pipe 10'	2"	Cast Iron	ASTM A888	Solvent Welded	NoNH2 - Pipe 10'	No-Hub	No Finish	ADSK_40053592	61194200129	162-NH-2_2"x10'	NH-2_2"x10'	022CH0158
ADSK_40053593	Public Health	Charlotte	No.NH2	NoNH2 - Pipe 10'	3"	Cast Iron	ASTM A888	Solvent Welded	NoNH2 - Pipe 10'	No-Hub	No Finish	ADSK_40053593	61194200130	162-NH-2_3"x10'	NH-2_3"x10'	022CH0160
ADSK_40053594	Public Health	Charlotte	No.NH2	NoNH2 - Pipe 10'	4"	Cast Iron	ASTM A888	Solvent Welded	NoNH2 - Pipe 10'	No-Hub	No Finish	ADSK_40053594	61194200131	162-NH-2_4"x10'	NH-2_4"x10'	022CH0162
ADSK_40053595	Public Health	Charlotte	No.NH2	NoNH2 - Pipe 10'	5"	Cast Iron	ASTM A888	Solvent Welded	NoNH2 - Pipe 10'	No-Hub	No Finish	ADSK_40053595	61194200132	162-NH-2_5"x10'	NH-2_5"x10'	022CH0164
ADSK_40053596	Public Health	Charlotte	No.NH2	NoNH2 - Pipe 10'	6"	Cast Iron	ASTM A888	Solvent Welded	NoNH2 - Pipe 10'	No-Hub	No Finish	ADSK_40053596	61194200133	162-NH-2_6"x10'	NH-2_6"x10'	022CH0168
ADSK_40053597	Public Health	Charlotte	No.NH2	NoNH2 - Pipe 10'	8"	Cast Iron	ASTM A888	Solvent Welded	NoNH2 - Pipe 10'	No-Hub	No Finish	ADSK_40053597	61194200134	162-NH-2_8"x10'	NH-2_8"x10'	022CH0170
ADSK_40053598	Public Health	Charlotte	No.NH2	NoNH2 - Pipe 10'	10"	Cast Iron	ASTM A888	Solvent Welded	NoNH2 - Pipe 10'	No-Hub	No Finish	ADSK_40053598	61194200135	162-NH-2_10"x10'	NH-2_10"x10'	022CH0171A
ADSK_40053599	Public Health	Charlotte	No.NH2	NoNH2 - Pipe 10'	12"	Cast Iron	ASTM A888	Solvent Welded	NoNH2 - Pipe 10'	No-Hub	No Finish	ADSK_40053599	61194209606	162-NH-2_12"x10'	NH-2_12"x10'	022CH0183
ADSK_40053600	Public Health	Charlotte	No.NH2	NoNH2 - Pipe 10'	15"	Cast Iron	ASTM A888	Solvent Welded	NoNH2 - Pipe 10'	No-Hub	No Finish	ADSK_40053600	61194209607	162-NH-2_15"x10'	NH-2_15"x10'	022CH0184
ADSK_40053611	Public Health	Charlotte	No.EZS1	NoEZS1 - Figure C 2"x2"x1-1/2'		Cast Iron	ASTM A888	Solvent Welded	NoEZS1 - Figure C	No-Hub	No Finish	ADSK_40053611	61194204761	162-EZS-1_2"x2"x1.5'	EZS-1_2"x2"x1.5'	022CH9280
ADSK_40053621	Public Health	Charlotte	No.EZS13	NoEZS13 - 45 Vent 2"		Cast Iron	ASTM A888	Solvent Welded	NoEZS13 - 45 Vent	No-Hub	No Finish	ADSK_40053621	61194204447	162-EZS-13_2"	EZS-13_2"	022CH9022
ADSK_40053631	Public Health	Charlotte	No.EZS14	NoEZS14 - Extender 2"x18"		Cast Iron	ASTM A888	Solvent Welded	NoEZS14 - Extender	No-Hub	No Finish	ADSK_40053631	61194204448	162-EZS-14_2"x18"	EZS-14_2"x18"	022CH0450
ADSK_40053632	Public Health	Charlotte	No.EZS14	NoEZS14 - Extender 2"x24"		Cast Iron	ASTM A888	Solvent Welded	NoEZS14 - Extender	No-Hub	No Finish	ADSK_40053632	61194204444	162-EZS-14_2"x24"	EZS-14_2"x24"	022CH0450A
ADSK_40053633	Public Health	Charlotte	No.EZS14	NoEZS14 - Extender 2"x34"		Cast Iron	ASTM A888	Solvent Welded	NoEZS14 - Extender	No-Hub	No Finish	ADSK_40053633	61194204449	162-EZS-14_2"x34"	EZS-14_2"x34"	022CH0451
ADSK_40053641	Public Health	Charlotte	No.EZS15	NoEZS15 - Extender 2"x24"		Cast Iron	ASTM A888	Solvent Welded	NoEZS15 - Extender	No-Hub	No Finish	ADSK_40053641	61194204453	162-EZS-15_2"x24"	EZS-15_2"x24"	022CH8429
ADSK_40053642	Public Health	Charlotte	No.EZS15	NoEZS15 - Extender 2"x36"		Cast Iron	ASTM A888	Solvent Welded	NoEZS15 - Extender	No-Hub	No Finish	ADSK_40053642	61194204450	162-EZS-15_2"x36"	EZS-15_2"x36"	022CH8430
ADSK_40053651	Public Health	Charlotte	No.EZS16	NoEZS16 - Two-W 2"x18"		Cast Iron	ASTM A888	Solvent Welded	NoEZS16 - Two-W	No-Hub	No Finish	ADSK_40053651	61194204872	162-EZS-16_2"x18"	EZS-16_2"x18"	022CH0899
ADSK_40053652	Public Health	Charlotte	No.EZS16	NoEZS16 - Two-W 2"x24"		Cast Iron	ASTM A888	Solvent Welded	NoEZS16 - Two-W	No-Hub	No Finish	ADSK_40053652	61194204451	162-EZS-16_2"x24"	EZS-16_2"x24"	022CH0900
ADSK_40053661	Public Health	Charlotte	No.EZS17	NoEZS17 - Extender 2"x2"x1-1/2'		Cast Iron	ASTM A888	Solvent Welded	NoEZS17 - Extender	No-Hub	No Finish	ADSK_40053661	61194204454	162-EZS-17_2"x2"x1.5'	EZS-17_2"x2"x1.5'	022CH1264
ADSK_40053662	Public Health	Charlotte	No.EZS17	NoEZS17 - Extender 2"x22-7/8"		Cast Iron	ASTM A888	Solvent Welded	NoEZS17 - Extender	No-Hub	No Finish	ADSK_40053662	61194204455	162-EZS-17_2"x22.875"	EZS-17_2"x22.875"	022CH1265
ADSK_40053671	Public Health	Charlotte	No.EZS18	NoEZS18 - Extender 2"x2"x1-1/2'		Cast Iron	ASTM A888	Solvent Welded	NoEZS18 - Extender	No-Hub	No Finish	ADSK_40053671	61194204456	162-EZS-18_2"x2"x1.5'	EZS-18_2"x2"x1.5'	022CH2042
ADSK_40053672	Public Health	Charlotte	No.EZS18	NoEZS18 - Extender 2"x22-7/8"		Cast Iron	ASTM A888	Solvent Welded	NoEZS18 - Extender	No-Hub	No Finish	ADSK_40053672	61194204457	162-EZS-18_2"x22.875"	EZS-18_2"x22.875"	022CH2043
ADSK_40053681	Public Health	Charlotte	No.EZS27	NoEZS27 - Sanitar 2"x2"x1-1/2'		Cast Iron	ASTM A888	Solvent Welded	NoEZS27 - Sanitary	No-Hub	No Finish	ADSK_40053681	61194204460	162-EZS-27_2"x2"x1.5'	EZS-27_2"x2"x1.5'	022CH1215
ADSK_40053682	Public Health	Charlotte	No.EZS27	NoEZS27 - Sanitar 2"x31"		Cast Iron	ASTM A888	Solvent Welded	NoEZS27 - Sanitary	No-Hub	No Finish	ADSK_40053682	61194204462	162-EZS-27_2"x31"	EZS-27_2"x31"	022CH1217
ADSK_40053691	Public Health	Charlotte	No.EZS28	NoEZS28 - Sanitar 2"x2"x1-1/2'		Cast Iron	ASTM A888	Solvent Welded	NoEZS28 - Sanitary	No-Hub	No Finish	ADSK_40053691	61194204464	162-EZS-28_2"x2"x1.5'	EZS-28_2"x2"x1.5'	022CH2040
ADSK_40053692	Public Health	Charlotte	No.EZS28	NoEZS28 - Sanitar 2"x31"		Cast Iron	ASTM A888	Solvent Welded	NoEZS28 - Sanitary	No-Hub	No Finish	ADSK_40053692	61194204466	162-EZS-28_2"x31"	EZS-28_2"x31"	022CH2041
ADSK_40053701	Public Health	Charlotte	No.EZS7	NoEZS7 - 2" Vent 2"		Cast Iron	ASTM A888	Solvent Welded	NoEZS7 - 2" Vent C	No-Hub	No Finish	ADSK_40053701	61194204429	162-EZS-7_2"	EZS-7_2"	022CH9200
ADSK_40053711	Public Health	Charlotte	No.NH1	NoNH1 - No-Hub C 1-1/2"		Cast Iron	ASTM A888	Solvent Welded	NoNH1 - No-Hub C	No-Hub	No Finish	ADSK_40053711	61194200097	162-NH-1_1.5"	NH-1_1.5"	020CH1935
ADSK_40053712	Public Health	Charlotte	No.NH1	NoNH1 - No-Hub C 2"x1-1/2"		Cast Iron	ASTM A888	Solvent Welded	NoNH1 - No-Hub C	No-Hub	No Finish	ADSK_40053712	61194200099	162-NH-1_2"x1.5"	NH-1_2"x1.5"	020CH2000
ADSK_40053713	Public Health	Charlotte	No.NH1	NoNH1 - No-Hub C 2"		Cast Iron	ASTM A888	Solvent Welded	NoNH1 - No-Hub C	No-Hub	No Finish	ADSK_40053713	61194200098	162-NH-1_2"	NH-1_2"	020CH2005
ADSK_40053714	Public Health	Charlotte	No.NH1	NoNH1 - No-Hub C 3"x2"		Cast Iron	ASTM A888	Solvent Welded	NoNH1 - No-Hub C	No-Hub	No Finish	ADSK_40053714	61194200101	162-NH-1_3"x2"	NH-1_3"x2"	020CH2006
ADSK_40053715	Public Health	Charlotte	No.NH1	NoNH1 - No-Hub C 3"		Cast Iron	ASTM A888	Solvent Welded	NoNH1 - No-Hub C	No-Hub	No Finish	ADSK_40053715	61194200100	162-NH-1_3"	NH-1_3"	020CH2010
ADSK_40053716	Public Health	Charlotte	No.NH1	NoNH1 - No-Hub C 4"x3"		Cast Iron	ASTM A888	Solvent Welded	NoNH1 - No-Hub C	No-Hub	No Finish	ADSK_40053716	61194200103	162-NH-1_4"x3"	NH-1_4"x3"	020CH2011
ADSK_40053717	Public Health	Charlotte	No.NH1	NoNH1 - No-Hub C 4"		Cast Iron	ASTM A888	Solvent Welded	NoNH1 - No-Hub C	No-Hub	No Finish	ADSK_40053717	61194200102	162-NH-1_4"	NH-1_4"	020CH2015
ADSK_40053718	Public Health	Charlotte	No.NH1	NoNH1 - No-Hub C 5"		Cast Iron	ASTM A888	Solvent Welded	NoNH1 - No-Hub C	No-Hub	No Finish	ADSK_40053718	61194200104	162-NH-1_5"	NH-1_5"	020CH2020
ADSK_40053719	Public Health	Charlotte	No.NH1	NoNH1 - No-Hub C 6"		Cast Iron	ASTM A888	Solvent Welded	NoNH1 - No-Hub C	No-Hub	No Finish	ADSK_40053719	61194200105	162-NH-1_6"	NH-1_6"	020CH2025
ADSK_40053720	Public Health	Charlotte	No.NH1	NoNH1 - No-Hub C 8"		Cast Iron	ASTM A888	Solvent Welded	NoNH1 - No-Hub C	No-Hub	No Finish	ADSK_40053720	61194200106	162-NH-1_8"	NH-1_8"	020CH2030
ADSK_40053721	Public Health	Charlotte	No.NH1	NoNH1 - No-Hub C 10"		Cast Iron	ASTM A888	Solvent Welded	NoNH1 - No-Hub C	No-Hub	No Finish	ADSK_40053721	61194200107	162-NH-1_10"	NH-1_10"	020CH2035
ADSK_40053731	Public Health	Charlotte	No.NH10	NoNH10 - Sixth Be 2"		Cast Iron	ASTM A888	Solvent Welded	NoNH10 - Sixth Be	No-Hub	No Finish	ADSK_40053731	61194200166	162-NH-10_2"	NH-10_2"	022CH0570



Updating Pricing List

■ Database Costing Tab

Database

Configuration Manufacturing Fittings Takeoff **Costing**

Cost Methods
Wastage
Overheads
Table
Price Lists
Fabrication Times
Installation Times
Labor Rates
Fixed Costs
Cost Analysis

Supplier Group: Harrison

Carriage: 0.0 (%)

Material Overheads: 0.0 (%)

Price List: Harrison List Prices

Generic Name:

Original Pricing: None

Id	Cost	Discount	Units	Date	Status	Description	OEM	Material	Size	Harrison
ADSK_30001296	1.86	Cerro	per (ft)	None	Active	Type L Hard Copper	Cerro	Copper	1/4"	010C 8767A
ADSK_30001280	1.86	Cerro	per (ft)	None	Active	Type L Hard Copper (Grv)	Cerro	Copper	1/4"	010C 8767A
ADSK_30000743	2.12	COPPER TUBING	per (ft)	11/26/2013	Active	Pipe-B88-CU-L(PE)	Generic	Copper	1/4"	010MU8887/
ADSK_30000777	2.12	COPPER TUBING	per (ft)	11/26/2013	Active	Pipe-B88-CU-L(GR)	Generic	Copper	1/4"	010MU8887/
ADSK_30001297	2.84	Cerro	per (ft)	None	Active	Type L Hard Copper	Cerro	Copper	3/8"	010C 8771A
ADSK_30001281	2.84	Cerro	per (ft)	None	Active	Type L Hard Copper (Grv)	Cerro	Copper	3/8"	010C 8771A
ADSK_30000744	3.33	COPPER TUBING	per (ft)	11/26/2013	Active	Pipe-B88-CU-L(PE)	Generic	Copper	3/8"	010MU8891/
ADSK_30000778	3.33	COPPER TUBING	per (ft)	11/26/2013	Active	Pipe-B88-CU-L(GR)	Generic	Copper	3/8"	010MU8891/
ADSK_30001298	3.24	Cerro	per (ft)	None	Active	Type L Hard Copper	Cerro	Copper	1/2"	010C 8775A
ADSK_30001282	3.24	Cerro	per (ft)	None	Active	Type L Hard Copper (Grv)	Cerro	Copper	1/2"	010C 8775A
ADSK_30000745	4.16	COPPER TUBING	per (ft)	11/26/2013	Active	Pipe-B88-CU-L(PE)	Generic	Copper	1/2"	010MU8895/
ADSK_30000779	4.16	COPPER TUBING	per (ft)	11/26/2013	Active	Pipe-B88-CU-L(GR)	Generic	Copper	1/2"	010MU8895/
ADSK_30001299	4.99	Cerro	per (ft)	None	Active	Type L Hard Copper	Cerro	Copper	5/8"	010C 8779A
ADSK_30001283	4.99	Cerro	per (ft)	None	Active	Type L Hard Copper (Grv)	Cerro	Copper	5/8"	010C 8779A
ADSK_30000746	5.73	COPPER TUBING	per (ft)	11/26/2013	Active	Pipe-B88-CU-L(PE)	Generic	Copper	5/8"	010MU8899/

Apply OK Cancel

■ E-Office



HARRISON PUBLISHING HOUSE

- ON-LINE TOUR
- TESTIMONIALS
- FAQS
- ORDER
- NEWS
- PARTNERS
- PRICEBOOKS



FREE 30 DAY TRIAL

See what all your fellow contractors are talking about. Try HPH e-office at no risk for one month. Fully functional product will allow you to set up your online office, bid jobs, submit RFQ's and use all the other product features. [Click for more details](#)

Latest News

Read articles from our news section for the latest information on HPH.



HPH is pleased to offer this comprehensive product to assist contractors in harnessing the power of the internet to more efficiently manage the necessary office functions of the modern contractor.



Welcome to the **most powerful online tool** for the **Contracting Trade**




Combining reliable product information with easy to use office tools, HPH e-office empowers contractors to establish an organized and secure virtual office with unlimited access and unprecedented functionality.


- Database: Select any of the continuously updated and quality HPH databases
- Product Info: Prices, Labor Units, Submittals, Line Art, and Cross References
- Office BOM Manager: Manage Customers, Projects, Suppliers, and Material Lists
- Discounting: Create and maintain precise "Buy" pricing
- Compare Pricing: Check suppliers for best pricing
- e-Forms: Create and file smart electronic forms
- Output/Integrate: Distribute important business information to other applications


HOME | ABOUT HPH | MEMBER LOGIN | ON-LINE TOUR | TESTIMONIALS | FAQS
ORDER | NEWS | PARTNERS | DOWNLOAD SOFTWARE | CONTACT HPH


© 2004 HARRISON PUBLISHING HOUSE. ALL RIGHTS RESERVED. TERMS, CONDITIONS AND PRIVACY INFORMATION


■ HPH CINX





 Dashboard


 Organization


 Search


 Customers





 Vendors

 Projects

 Catalog

 Autodesk Fabri...

 MCAA Labor

 5

Lyle Janda

Enceptia

 Dashboard

Dashboard



Dashboard

My Profile

Connector Utility

Alert Manager

 Display Controller

Enceptia
Established 1987

 Edit Company Settings

2

Members

0

Projects

5300

Catalog Items

My Alerts

View All Alerts

Nov 07

This message is to notify you that your export request has been complete...

Nov 07

This message is to notify you that your export request has been complete...

Nov 07

This message is to notify you that your export request has been complete...

News and Updates

Show All

CINX Training Classes

November 14, 2014



We are offering 3 classes to help maximize your CINX account:
Class 1 - CINX and the Estimator
Class 2 - CINX and the Project Manager
Class 3 - CINX and the Purchasing Manager

Open Page

November 7, 2014 - Price Update Notification

November 7, 2014



New Price updates have been posted in your CINX account. Please contact HPH if you have any questions about the update, the process, or if you would like assistance. 800.890.0820 / support@harrisonpub.com
UPCOMING CHANGES - Please open this article to see a summary of the recently received future price change notifications.

Open Page

1 / 10

Session Feedback

- Via the Survey Stations, email or mobile device
- AU 2014 passes given out each day!
- Best to do it right after the session
- Instructors see results in real-time







Students, educators, and schools now have

FREE access to Autodesk design software & apps.

Download at www.autodesk.com/education



Earn your professional Autodesk Certification at AU

Visit the [AU Certification Lab](#)