



InfraWorks 360—There's a Trick to That

Juan Soto

Designer at Kimley-Horn Fort Worth, TX

@Civil3D_Jedi

juan.soto@kimley-horn.com



Class summary

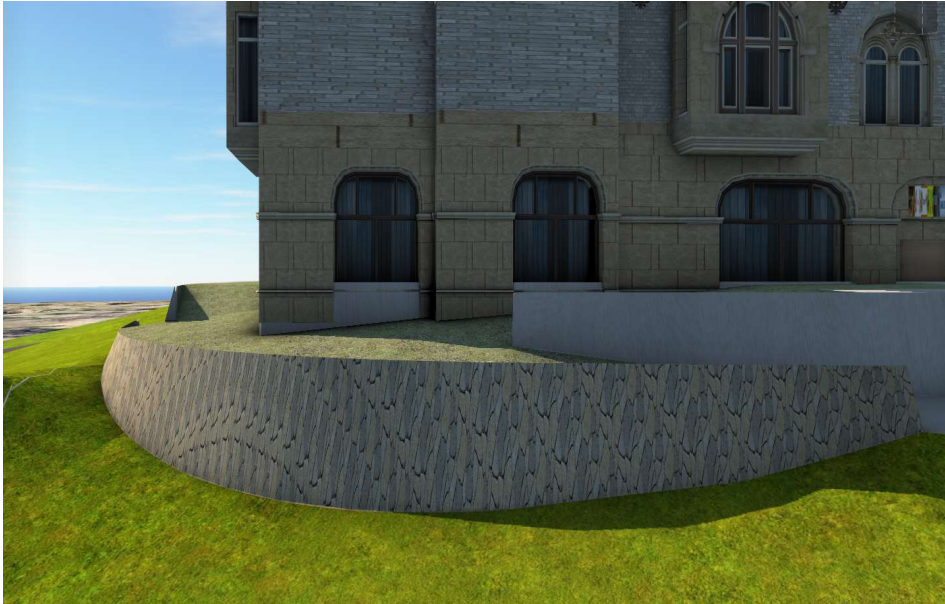
This class is designed to show the civil industry professionals techniques for creating renderings and depicting custom models utilizing multiple Autodesk tools. Using AutoCAD Civil 3D, InfraWorks, Revit, and 3ds Max .Learn how to create and use grading, site geometry, and custom (FBX) models that you can use in your InfraWorks models.

Key learning objectives

At the end of this class, you will be able to:

- Use subassembly from Civil3D to generate quick retaining walls to import into InfraWorks 360
- Create your own custom FBX objects
- Use raster imager to depict geometry and labels imported from AutoCAD line work
- Create and use data from field surveyed objects, i.e Tree, FireHydrants..

Why retaining walls?

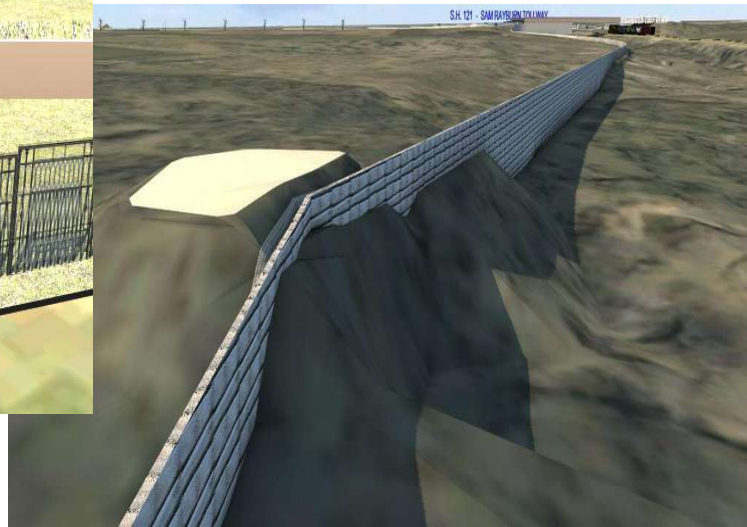
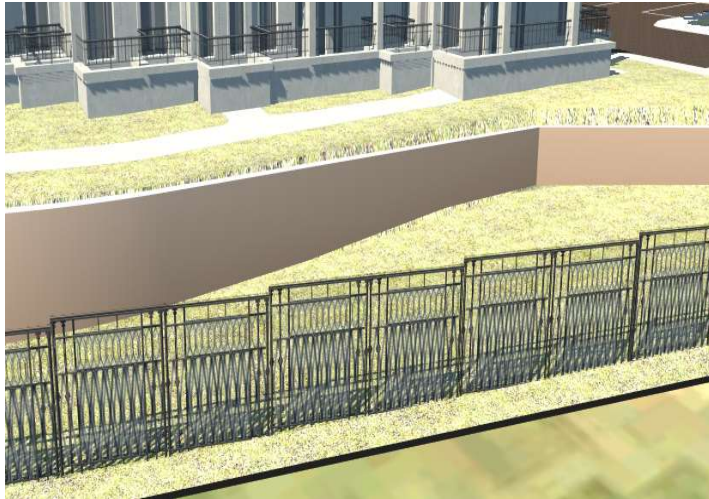


vs



Don'ts on Walls

1. Don't try to grade the wall tops and toes in Infraworks.
2. Don't leave gaps in your surface.
3. Be careful using SDF and setting one height



SDF VS Raster Images with a filter



VS

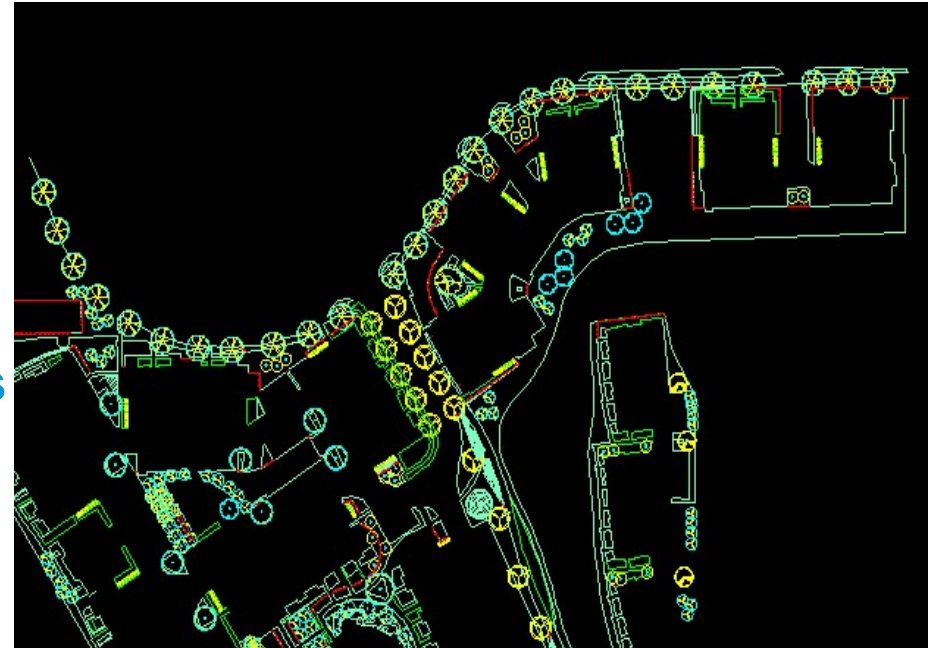


Real World Survey & Correct object fbx location

- Civil3d is faster with the clicks
- Importing and randomizing
- Blocks and points

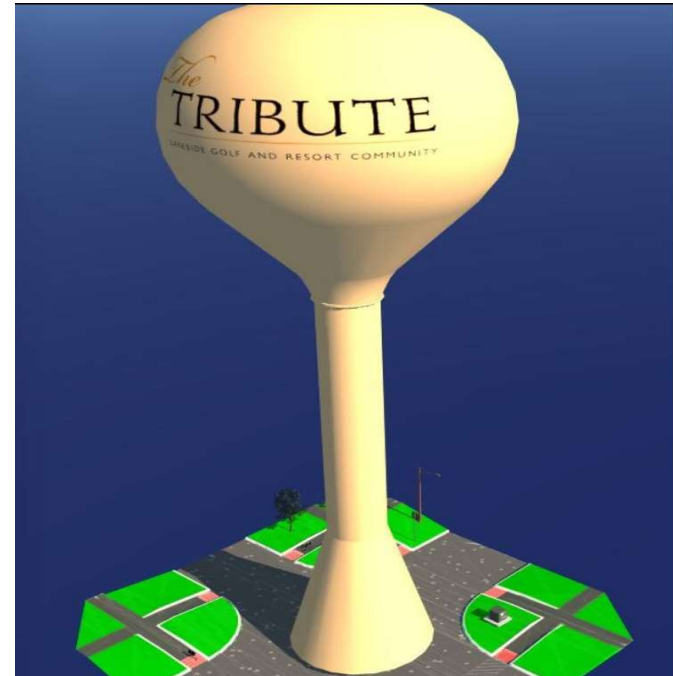
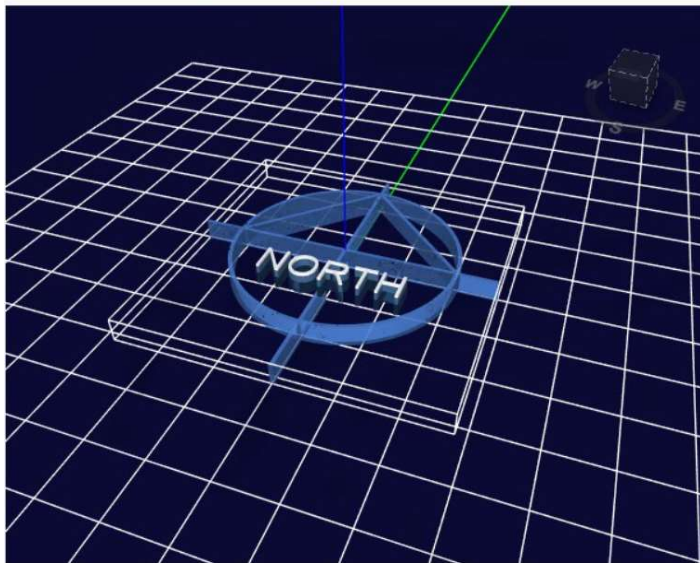


vs



Custom FBX objects

- Is fbx the correct format that you need..
- Watch the scale of fbx export
- How exact does the object need to be?
- Materials/textures



DEMO

How did I do?

- Your class feedback is critical. Fill out a **class survey** now.
- Use the AU mobile app or fill out a class survey online.
- Give feedback after each session.
- AU speakers will get feedback in real-time.
- **Your feedback results in better classes and a better AU experience.**



More Questions? Visit the AU Answer Bar

- Seek answers to all of your technical product questions by visiting the [Answer Bar](#).
- Open daily from [8am-6pm Tuesday](#) and [Wednesday](#); [8am-4:30pm Thursday](#).
- Located outside [Hall C, Level 2](#).
- Meet Autodesk developers, testers, & support engineers ready to help with your most challenging technical questions.





Autodesk is a registered trademark of Autodesk, Inc., and/or its subsidiaries and/or affiliates in the USA and/or other countries. All other brand names, product names, or trademarks belong to their respective holders. Autodesk reserves the right to alter product and services offerings, and specifications and pricing at any time without notice, and is not responsible for typographical or graphical errors that may appear in this document. © 2016 Autodesk, Inc. All rights reserved.

