



Jump-Start Your Manufacturing Projects – MA3364

Ryan McMahon
Sr. Product Manager

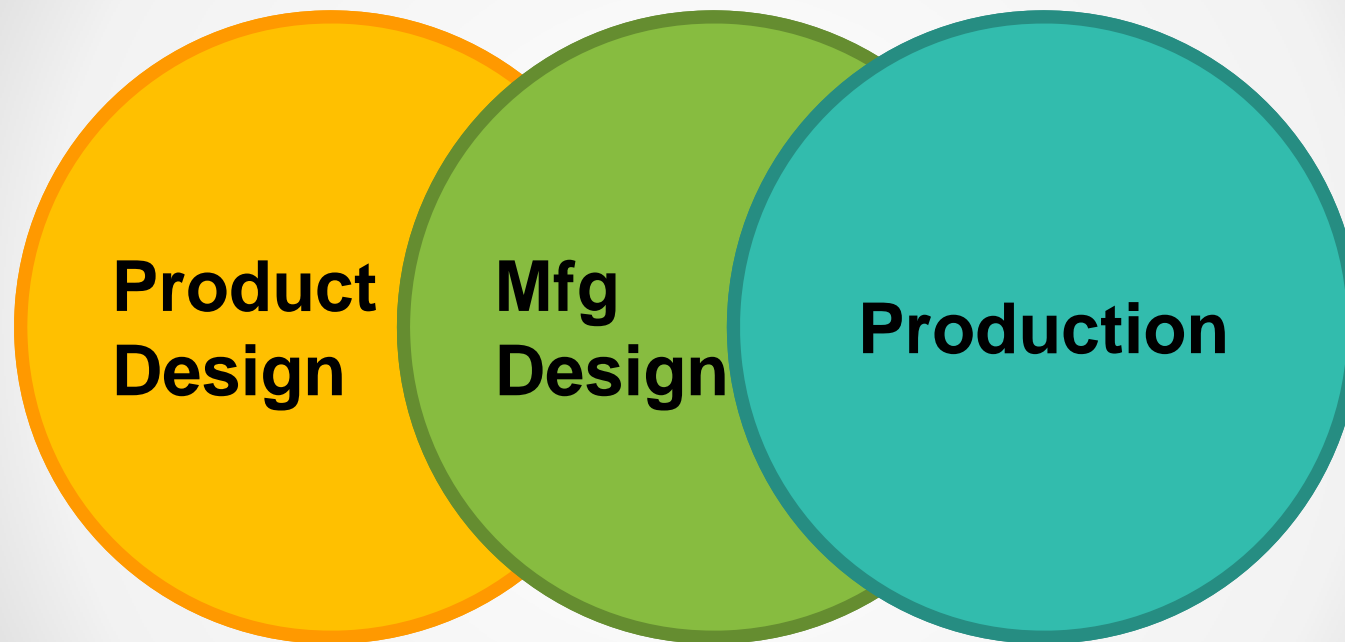


Course Description

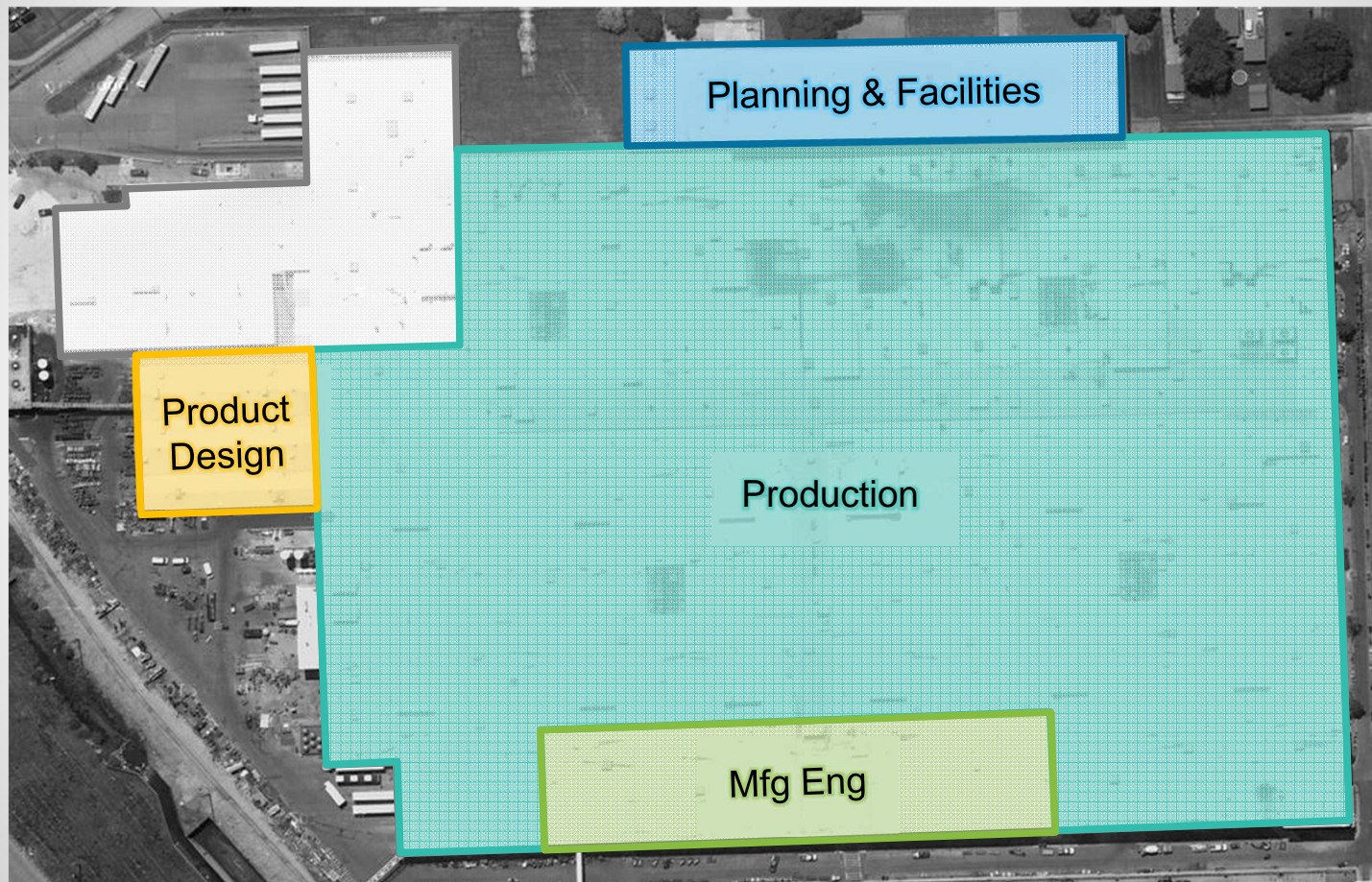
Turning requirements into actionable plans is difficult, but the process can be dramatically improved by capturing and testing your early concepts before detailed layout efforts begin. This class shows you how to get your projects going quickly using Autodesk® Factory Design Mobile for conceptual layout and Process Analysis 360 for process modeling.

Course Objectives

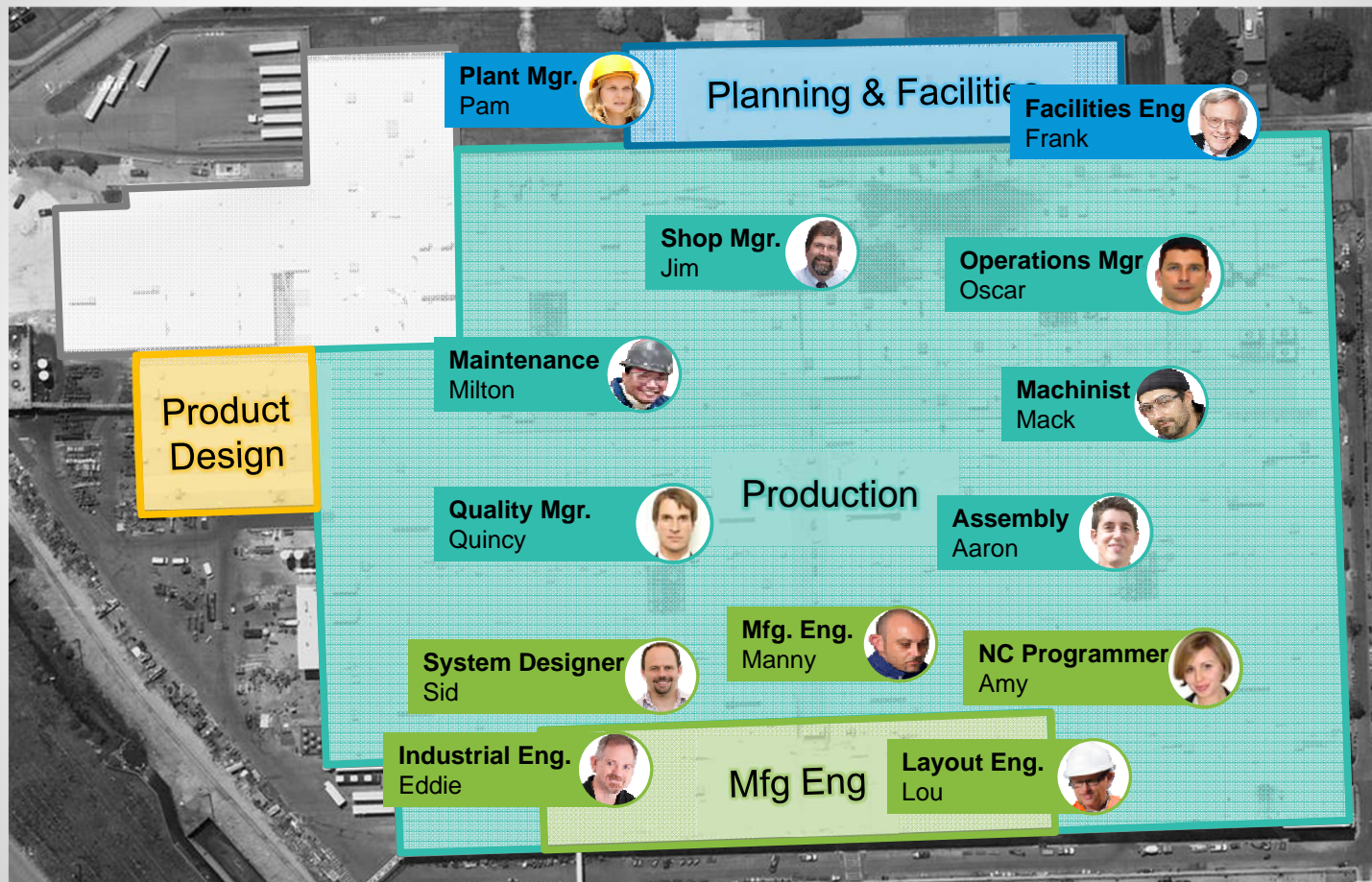
1. Create a 2D conceptual layout with FDM
2. Sync FDM project to FDS to see 3D
3. Simulate manufacturing options with PA 360
4. Show how FDM and PA 360 work with FDS



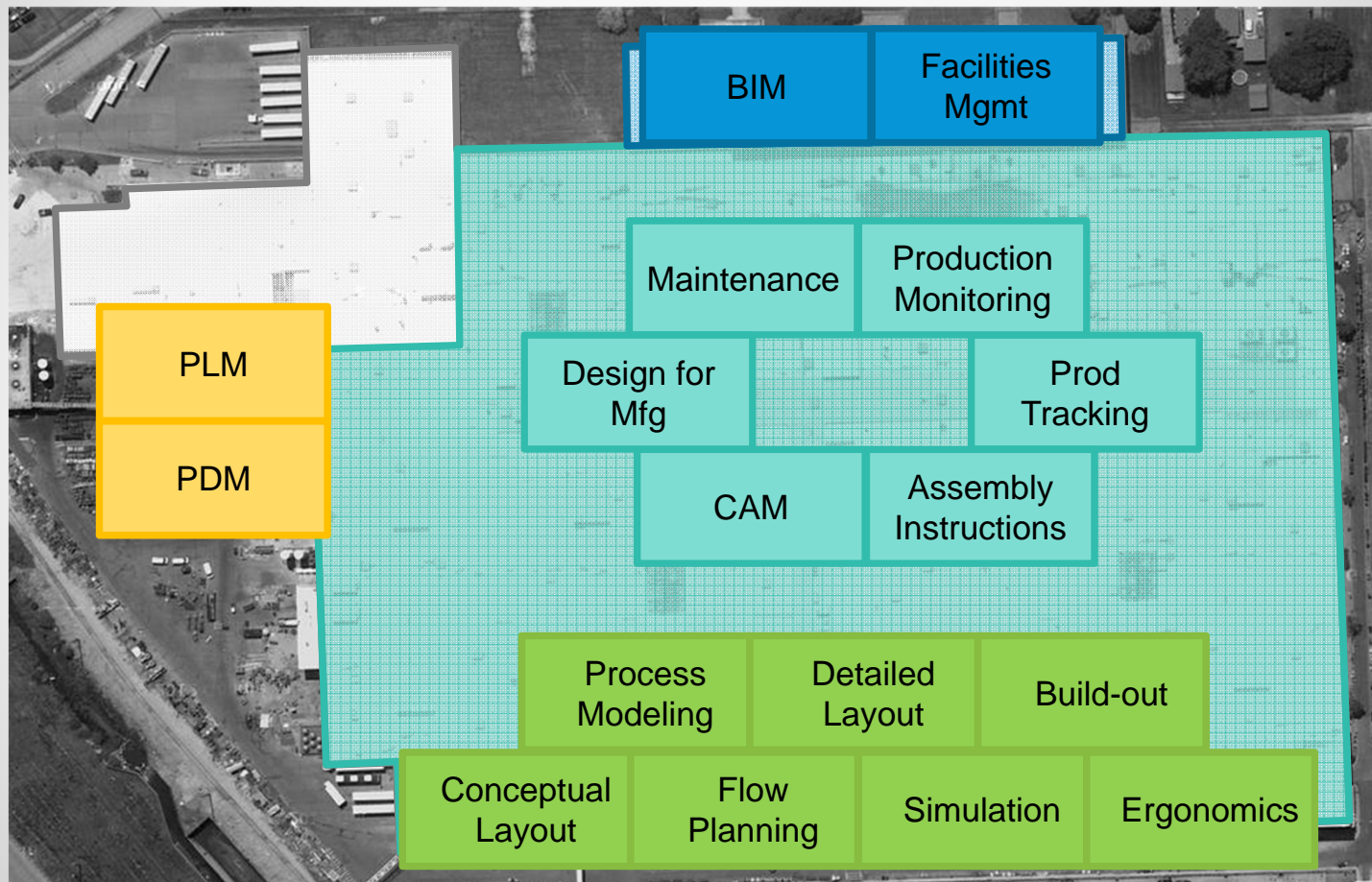
Manufacturing Environment



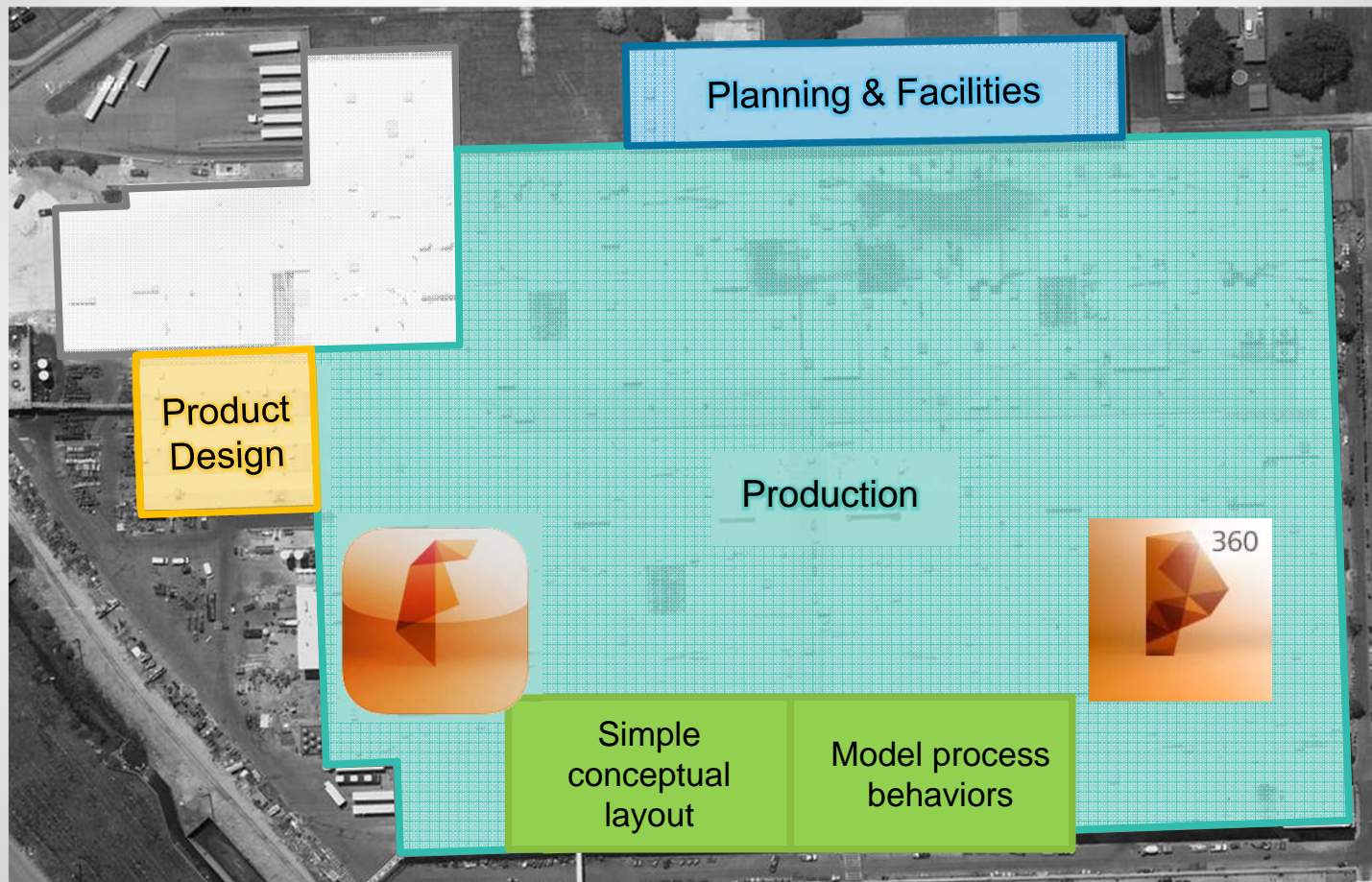
Manufacturing Users



Manufacturing Capabilities



Class Focus





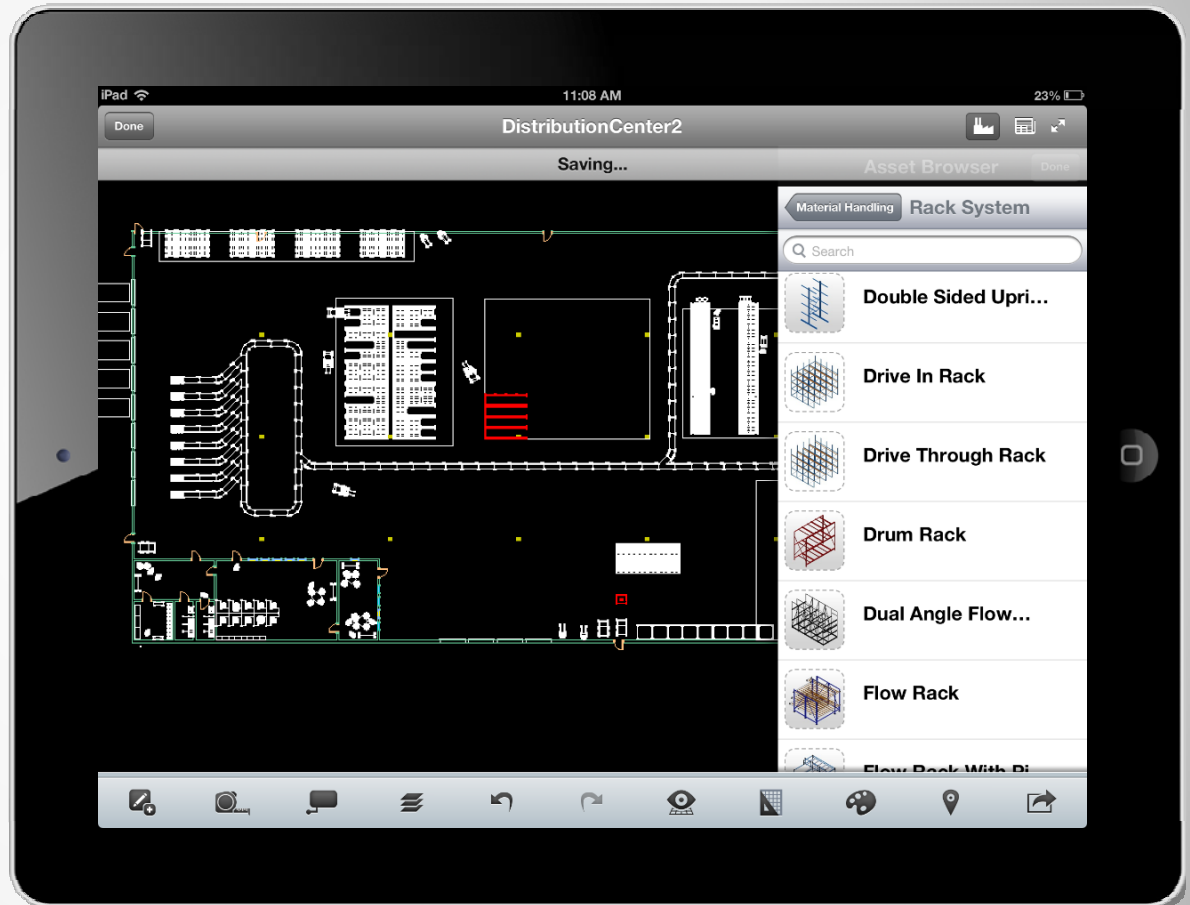
Factory Design Mobile

Factory Design Mobile

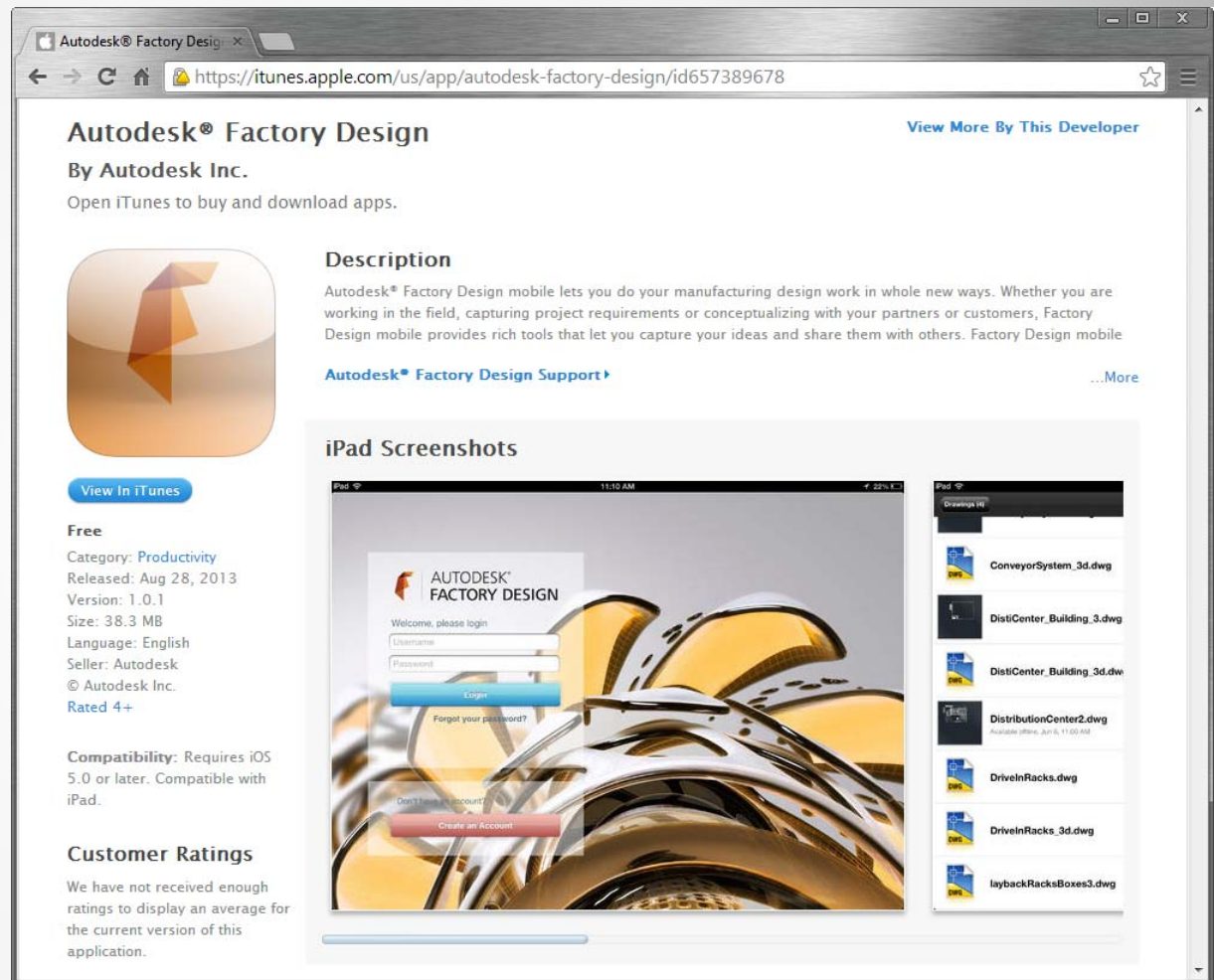
Mobile Layout

Design with
Factory Assets

Workflow with FDS



Free!



The screenshot shows the iTunes app page for Autodesk Factory Design. The browser address bar displays the URL: <https://itunes.apple.com/us/app/autodesk-factory-design/id657389678>. The app is titled "Autodesk® Factory Design" by Autodesk Inc. A "View More By This Developer" link is in the top right. Below the app icon is a "View In iTunes" button. The "Description" section states that the app lets users do manufacturing design work in new ways. A link to "Autodesk® Factory Design Support" is provided. The "iPad Screenshots" section shows two screenshots: a login screen with fields for "Username" and "Password", and a list of 3D model files including "ConveyorSystem_3d.dwg", "DistiCenter_Building_3d.dwg", "DistributionCenter2.dwg", "DriveInRacks.dwg", "DriveInRacks_3d.dwg", and "laybackRacksBoxes3.dwg".

Autodesk® Factory Design
By Autodesk Inc.
Open iTunes to buy and download apps.

Description
Autodesk® Factory Design mobile lets you do your manufacturing design work in whole new ways. Whether you are working in the field, capturing project requirements or conceptualizing with your partners or customers, Factory Design mobile provides rich tools that let you capture your ideas and share them with others. Factory Design mobile

[Autodesk® Factory Design Support](#) [...More](#)

iPad Screenshots

Free
Category: [Productivity](#)
Released: Aug 28, 2013
Version: 1.0.1
Size: 38.3 MB
Language: English
Seller: Autodesk
© Autodesk Inc.
Rated 4+

Compatibility: Requires iOS 5.0 or later. Compatible with iPad.

Customer Ratings
We have not received enough ratings to display an average for the current version of this application.

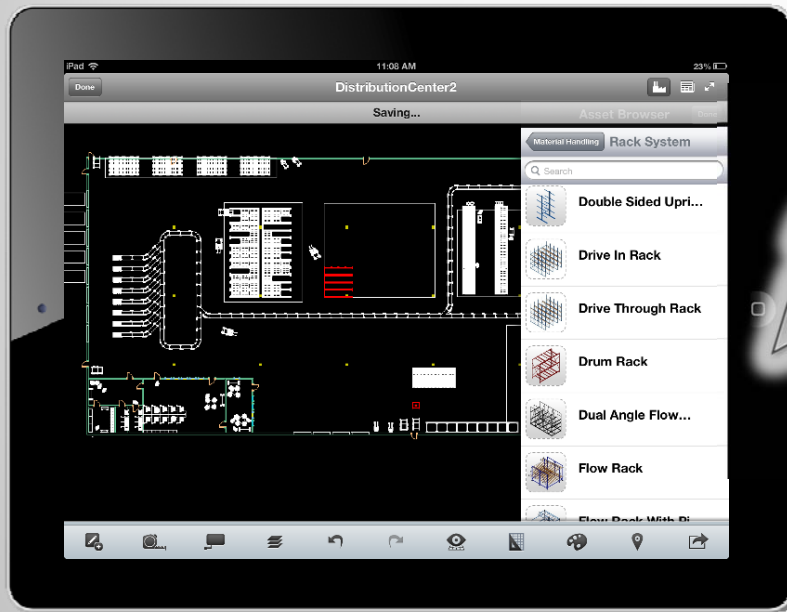
Factory Design Mobile – What Can I Do With It?

- Perform conceptual layout in the field
 - Manufacturing and Layout Engineering
 - Sales support tool
- Accelerate design process with Factory Assets
- Make layout tasks more collaborative
 - New users can contribute to design process

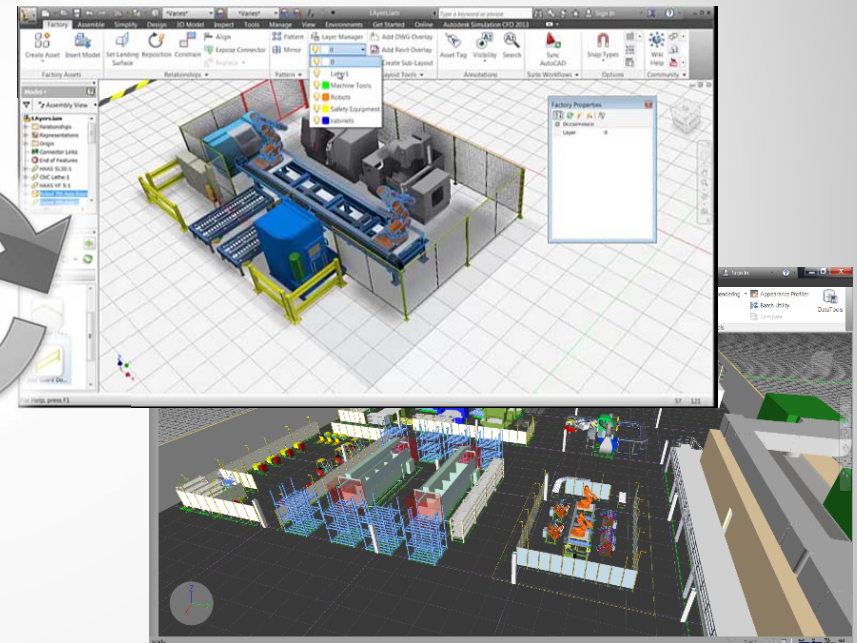
Compliments Factory Design Suite



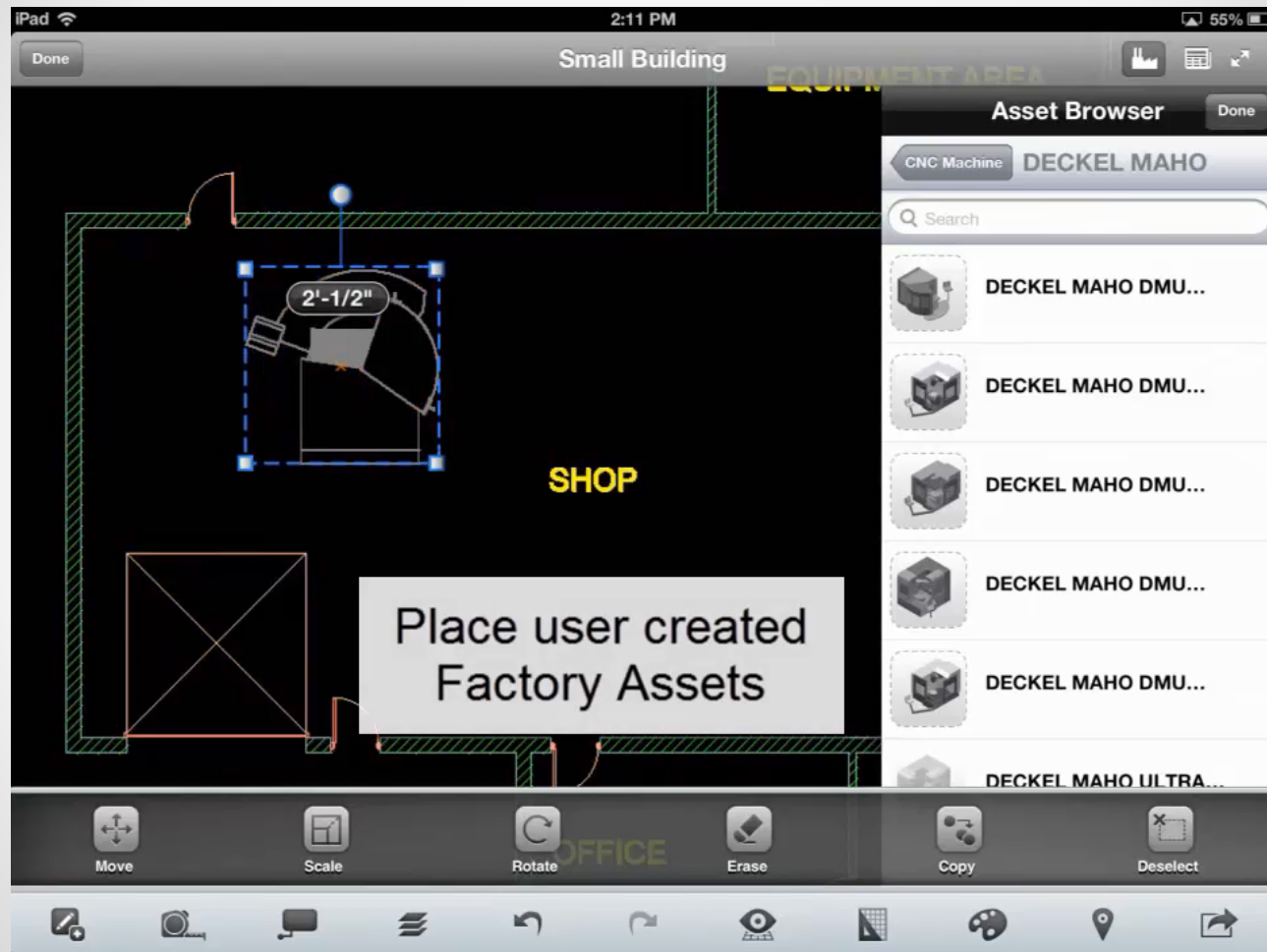
Conceptual Work



Detailed Work



Demo Video



Audience Feedback: Project Planning

“I would like to capture project requirements while in the field”

Raise hand
if true



Audience Feedback: Project Planning

“We often build conceptual models before implementing detailed designs”

Raise hand
if true



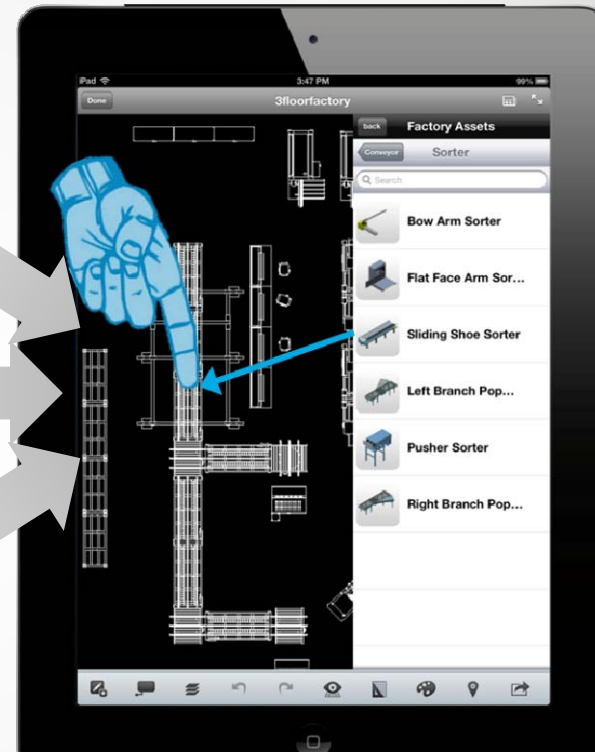
Business Value

Why Should I Care?

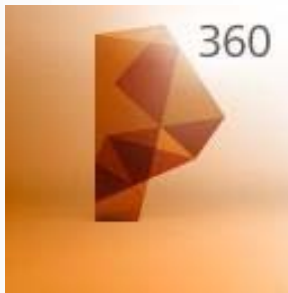
Complete layout anywhere

New users contribute to layout

Supports 2D-3D workflow



Saves Time, Reduces Errors, Lowers Costs

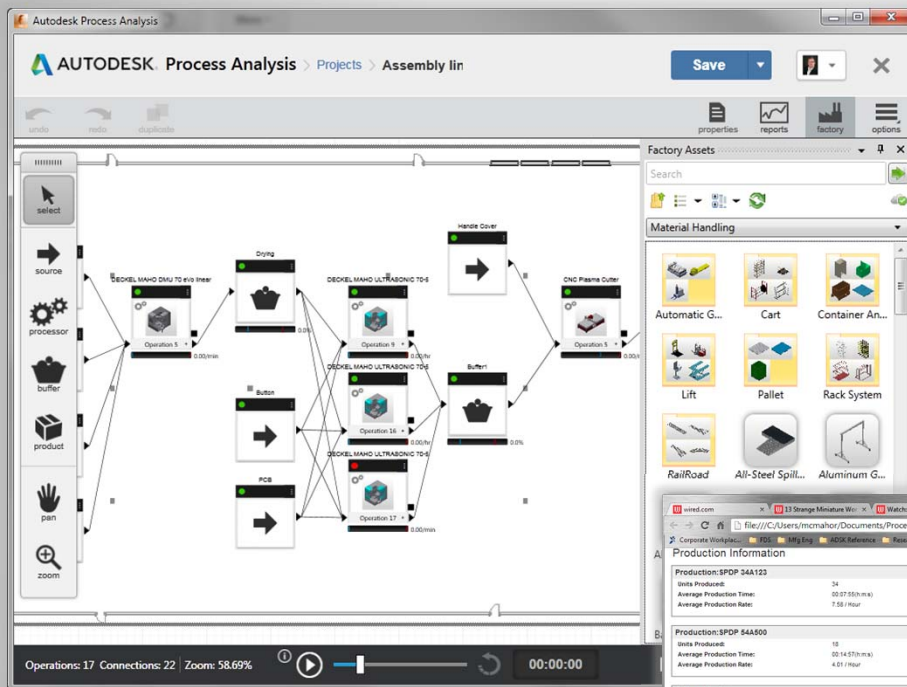


Process Analysis 360

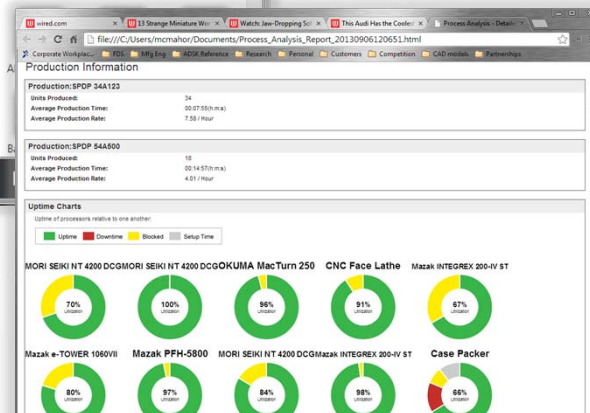
Everyone does process planning,
Process Analysis 360 makes it easy

Process Modeling for Everyone

- Manufacturing planning
- Design Validation
- Job costing
- Decision support

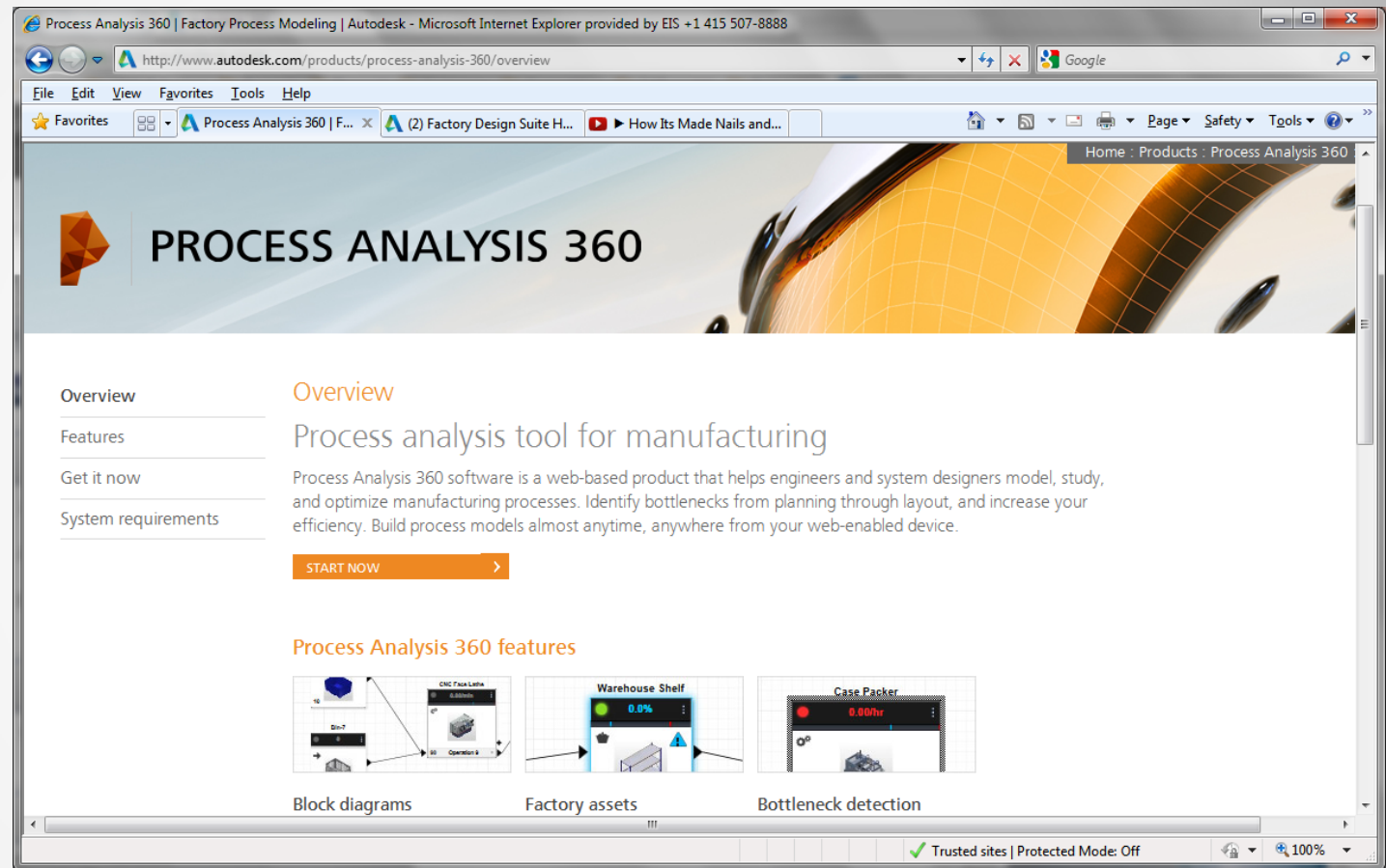


Build process models

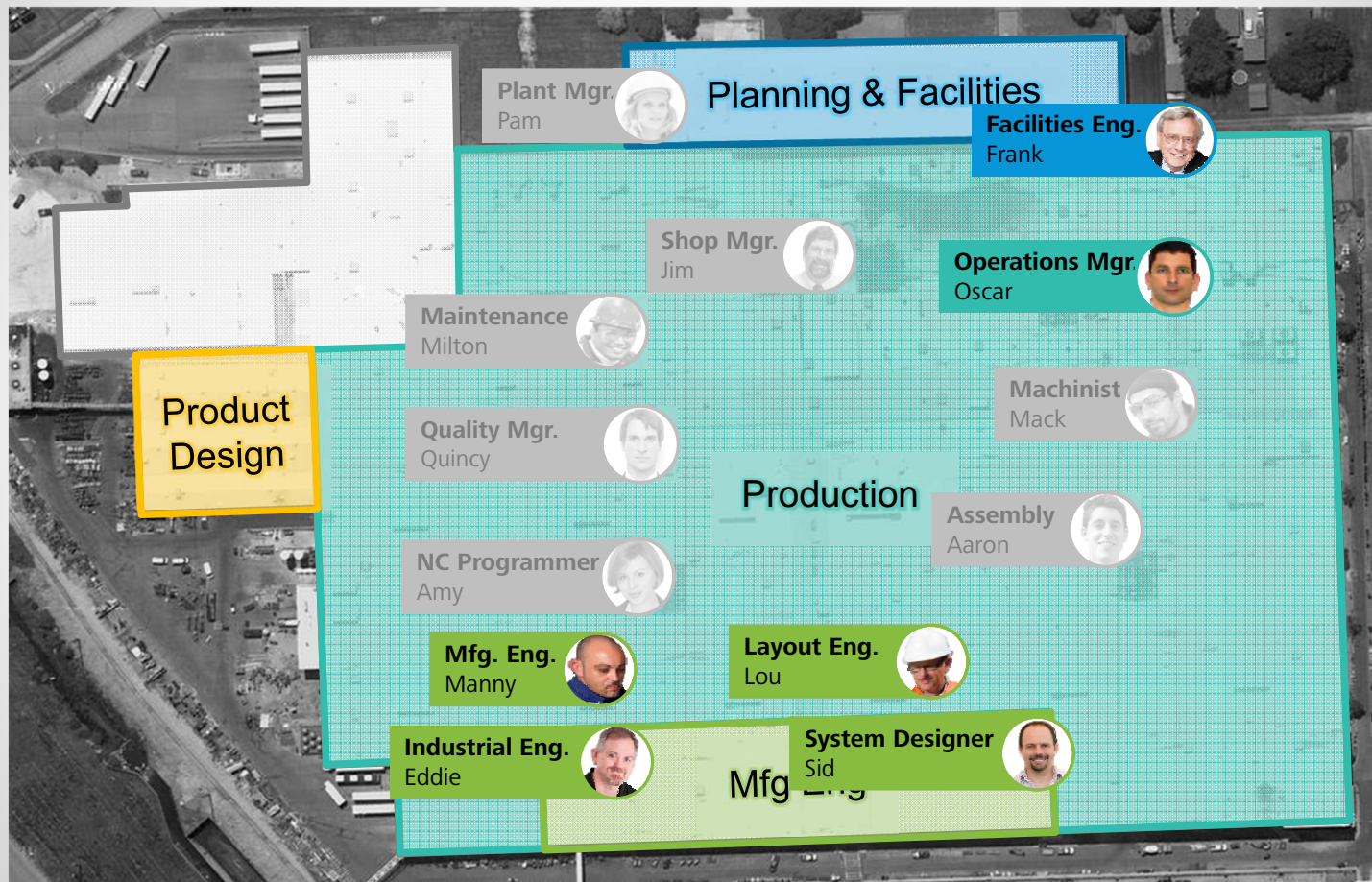


Detailed simulation reports

Free!

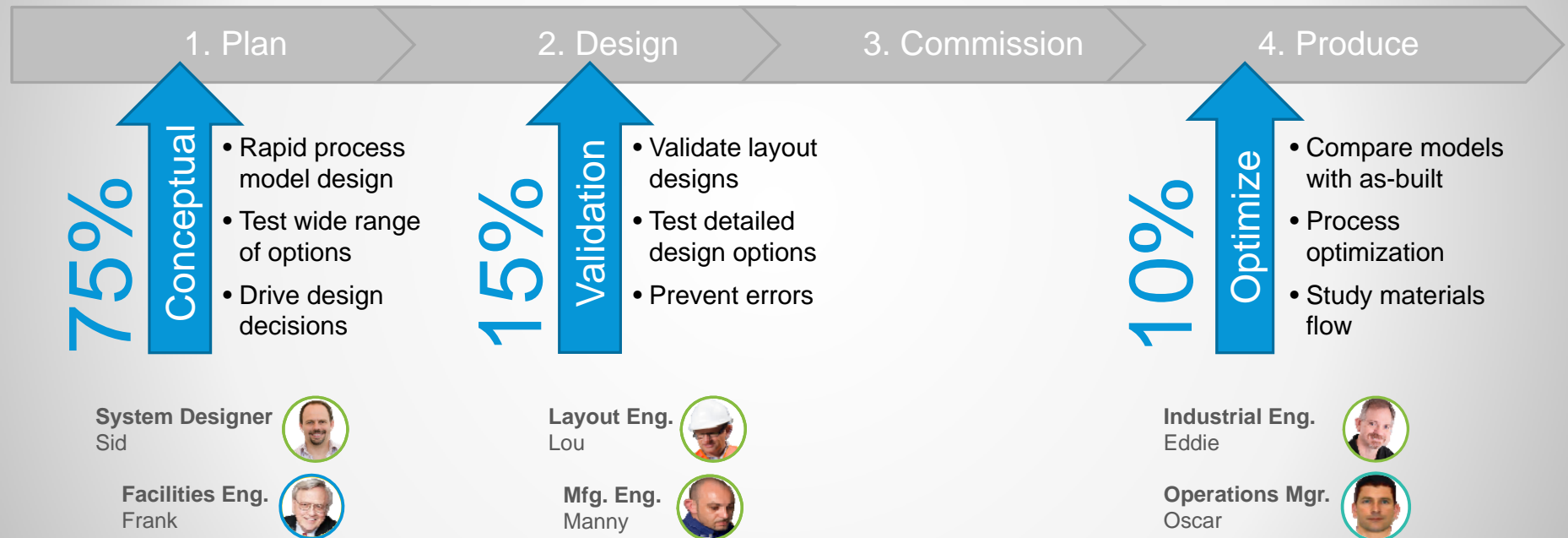


Who Uses Process Modeling?



Process Analysis 360 in Mfg Workflow

Usage by Persona



Audience Feedback: Process Modeling

“Our process plans or schedules often change when we get to manufacturing”

Raise hand
if true



Audience Feedback: Sustainability

“We are concerned with reducing scrap, energy, water, waste in general”

Raise hand
if true



Audience Feedback: Design Validation

“We automatically capture data from our production equipment”

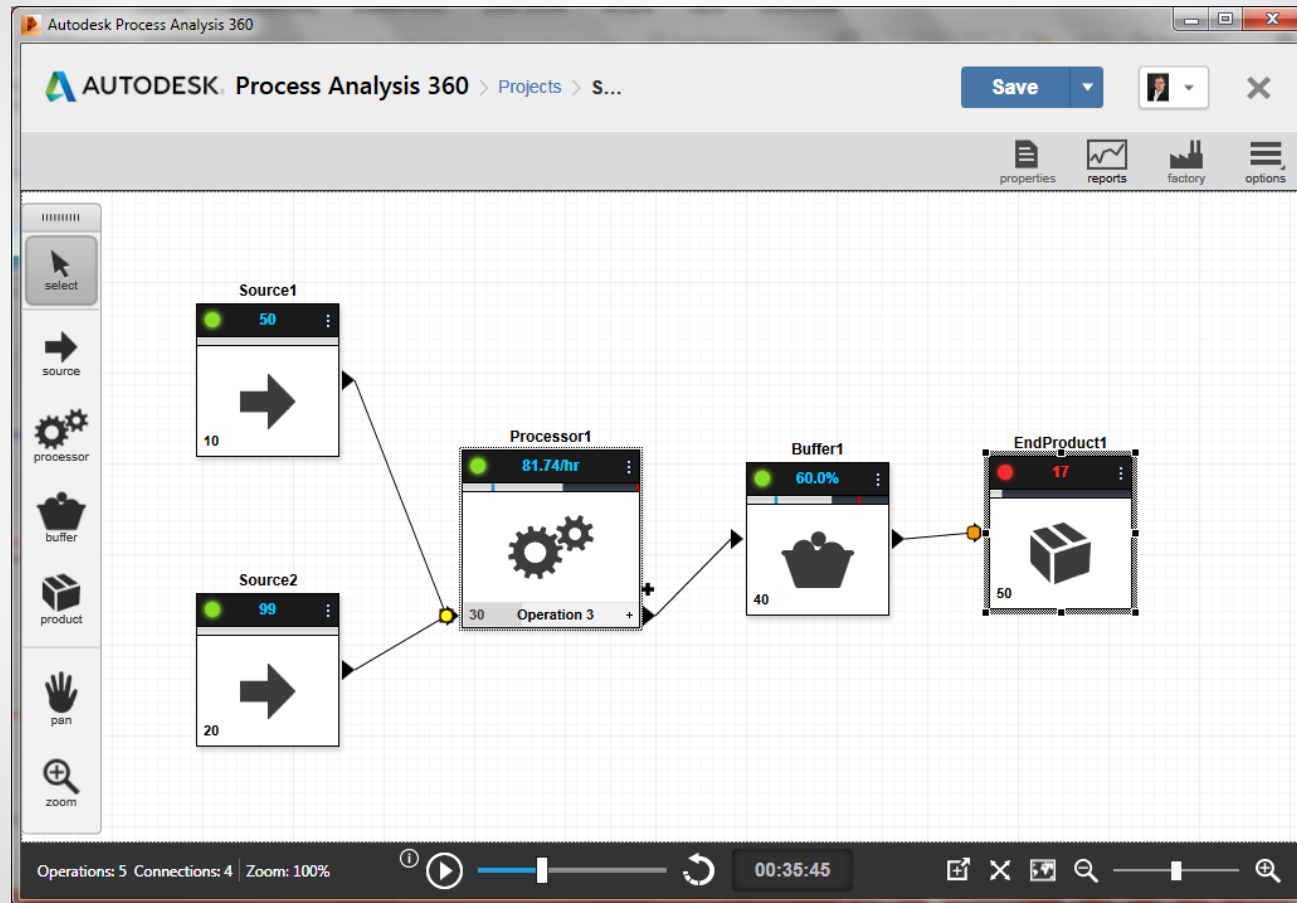
Raise hand
if true



The background of the slide is a light gray architectural floor plan. It features a grid of dashed lines and various geometric shapes representing rooms, corridors, and furniture. The plan is oriented horizontally and covers the entire width and height of the slide.

Building a Simple Model

Simple Model Screenshot



The background of the slide is a light gray architectural drawing, likely a floor plan, showing various rooms, corridors, and structural elements. The drawing is composed of thin, light gray lines on a white background.

How It's Made: Nails

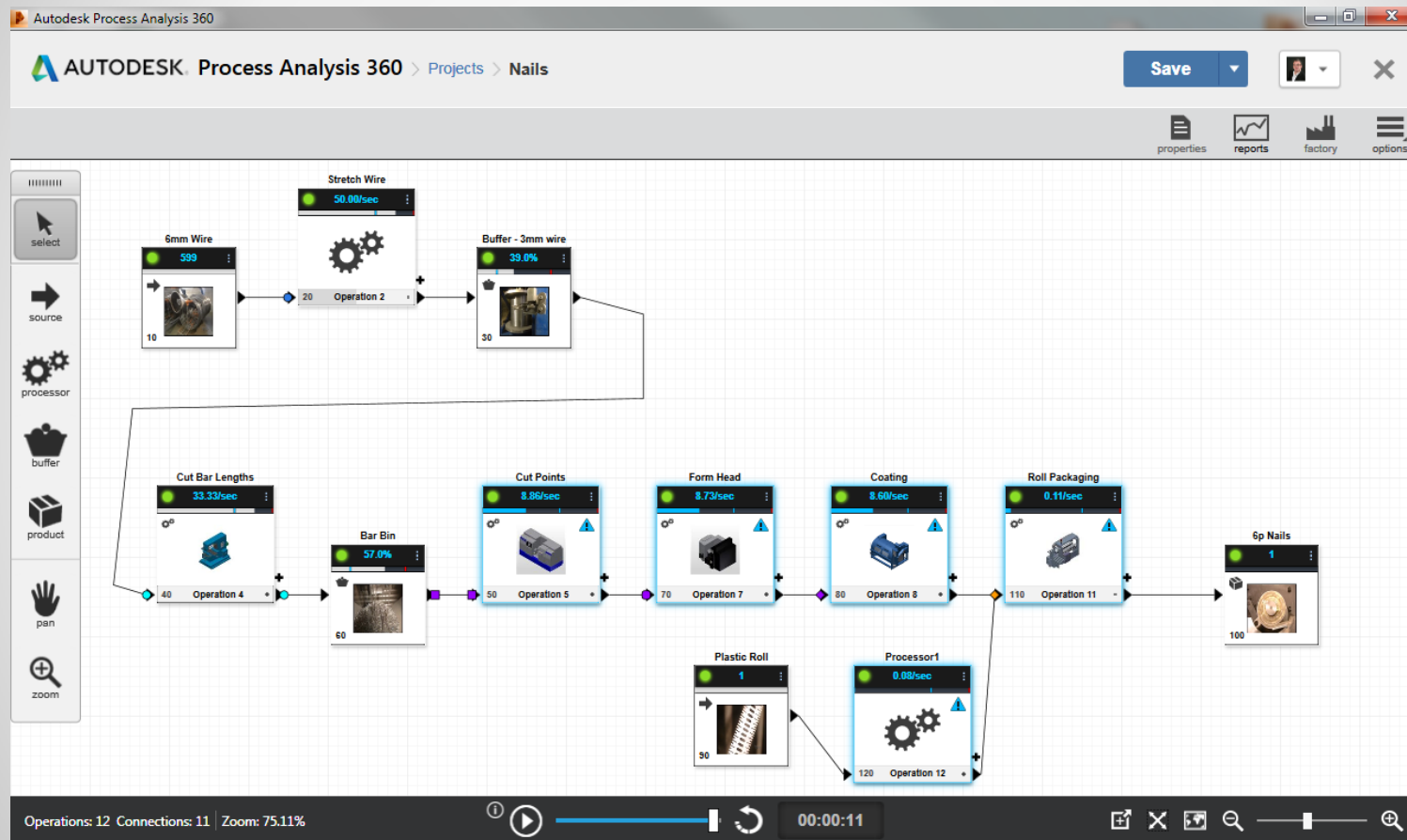
Video Screenshot



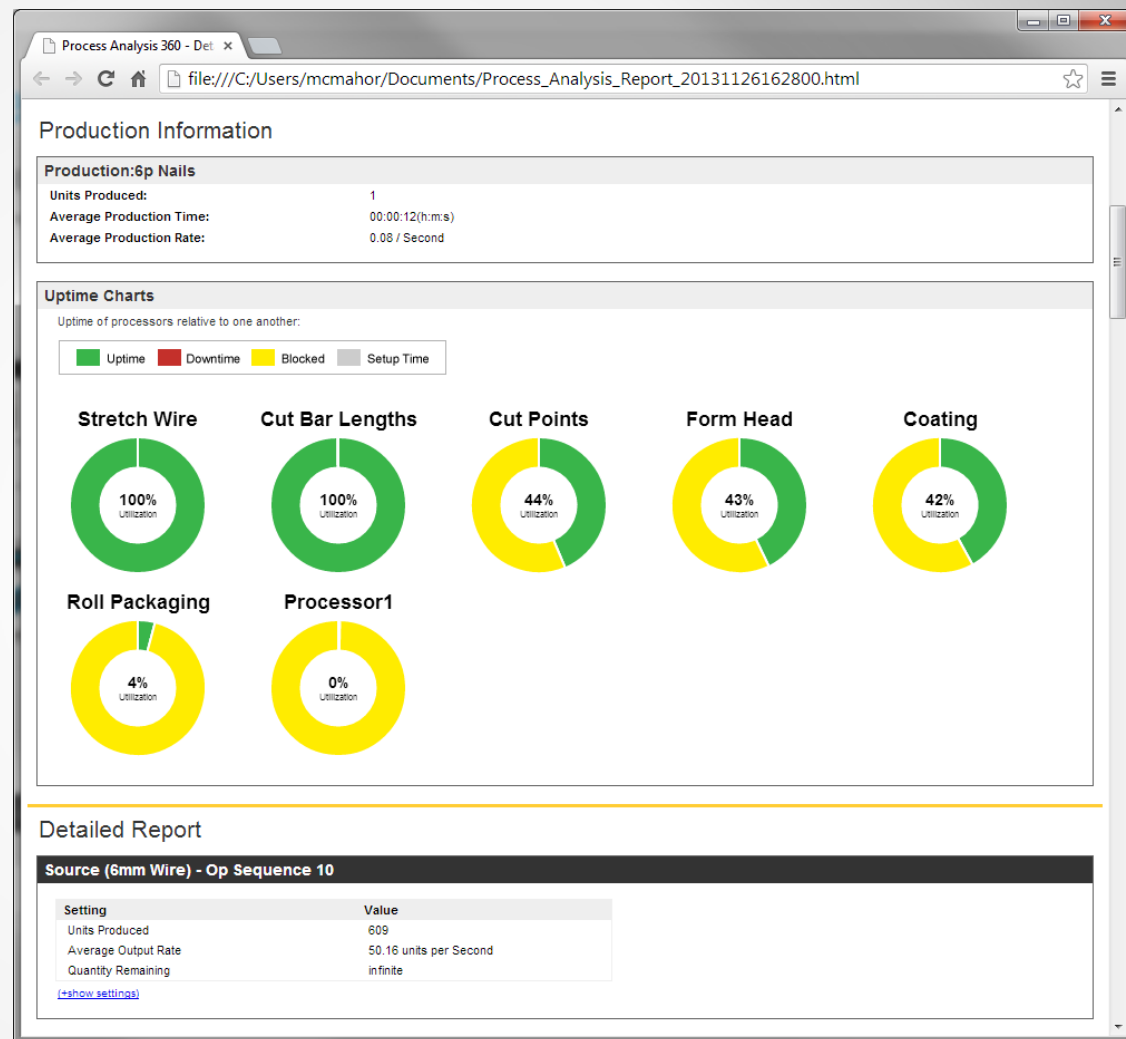
The background of the slide is a light gray architectural floor plan. It features a grid of dashed lines and various geometric shapes representing rooms, corridors, and furniture. The plan is oriented horizontally and covers the entire width of the slide.

Building a Model for Nails

Nails Model Screenshot



Detailed Reports



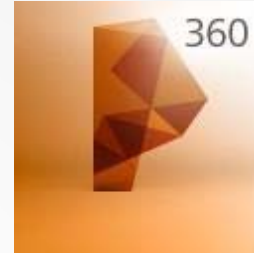
Business Value



Summary



Factory Design Mobile



Process Analysis 360

- Capture and validate project requirements
- Learn and get results quickly
- Accessible to all – Free!

Segue: Looking Forward

Conceptual → Implementation → Production

Compare planned to actual then optimize

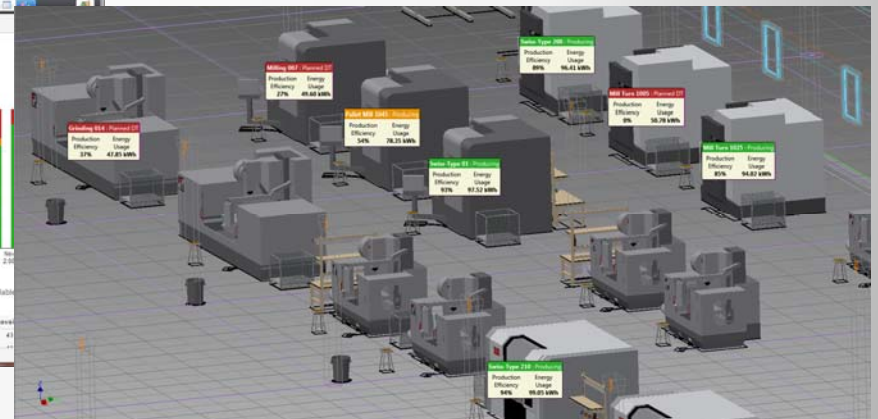
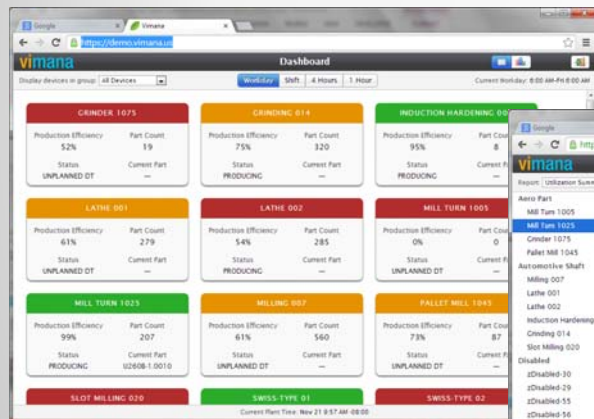
Requires Production Monitoring

Production Monitoring with System Insights

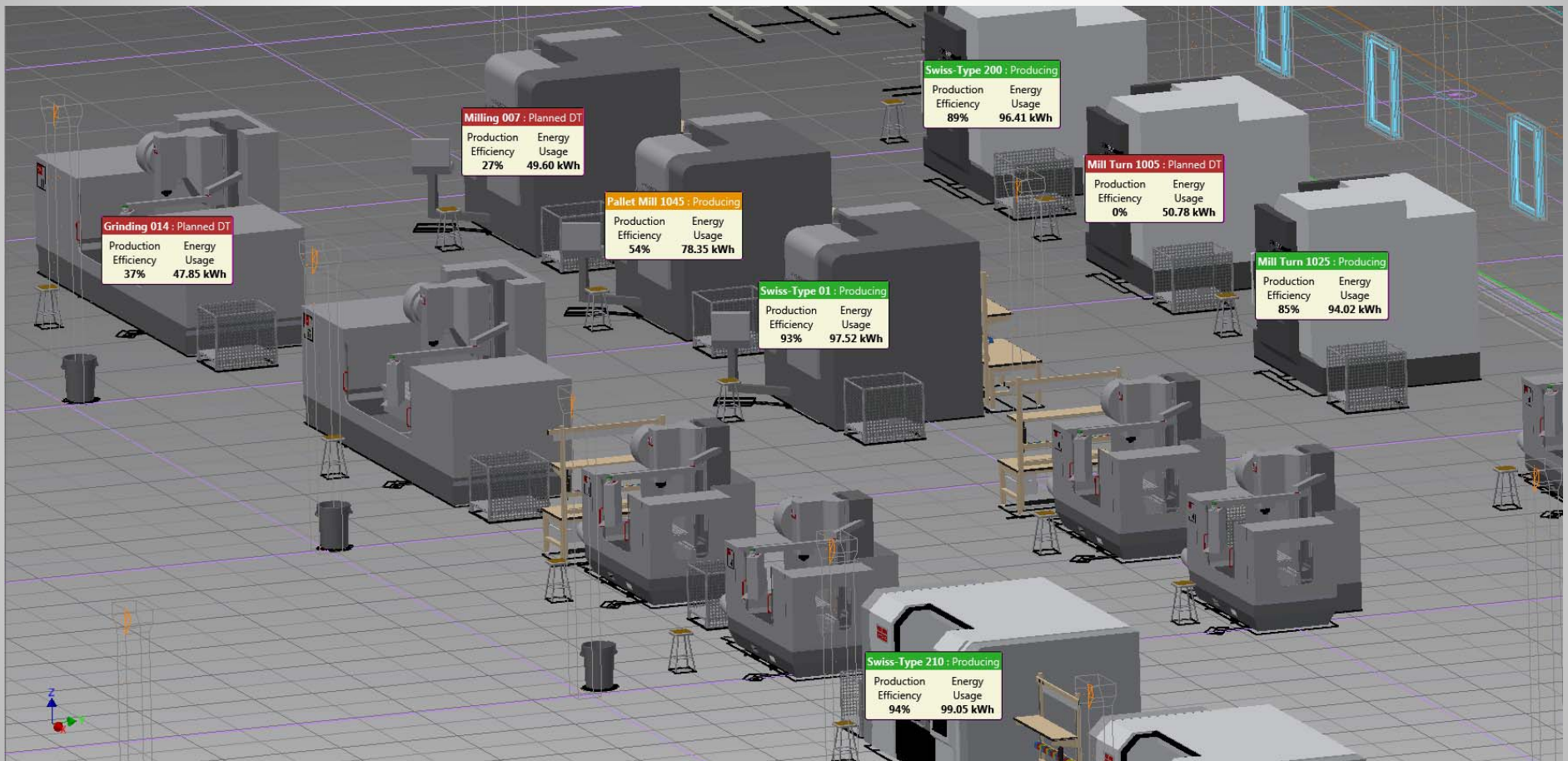
Aggregate
machine data

Analyze and
present

Visualize



Vimana From System Insights



Vimana From System Insights



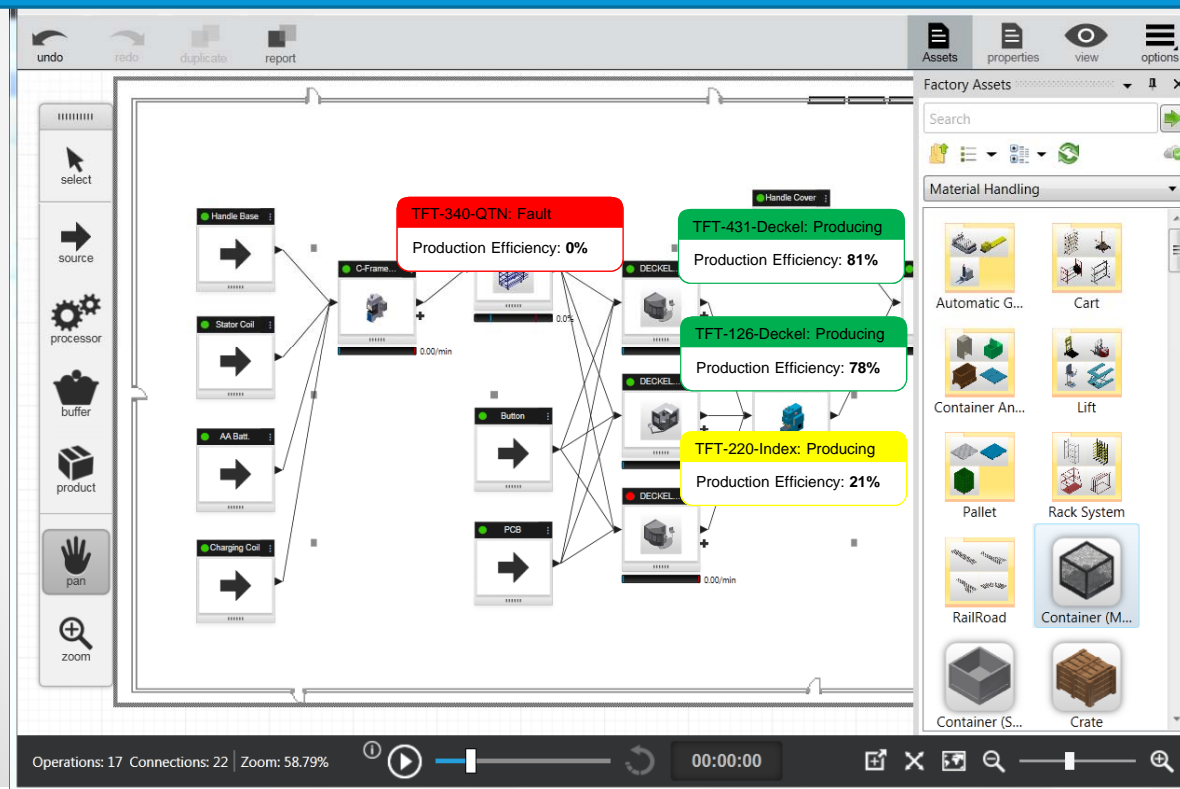
FDM as Platform for Production Monitoring



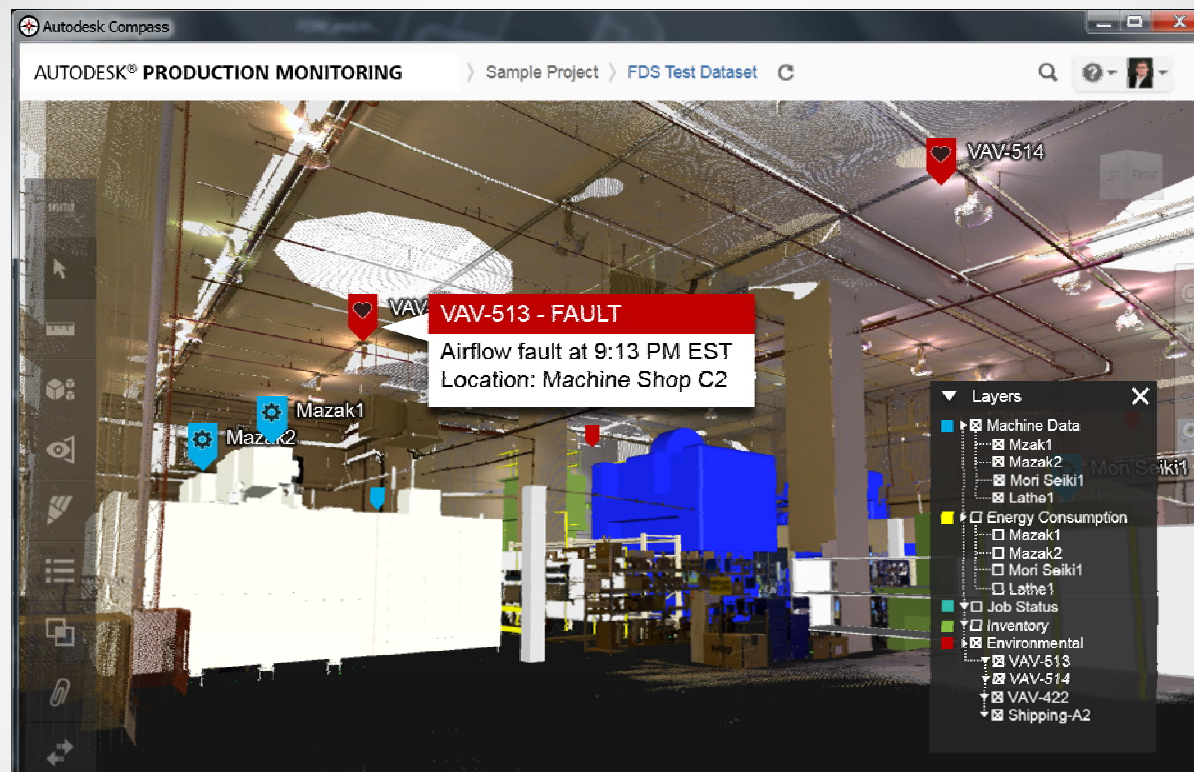
Access to production data anywhere

PA 360 for Production Monitoring

Compare process model to actual



“Google Earth” for Manufacturing



3D environment, Layers of Mfg Data

Course Objectives Met?

1. Create a 2D conceptual layout with FDM
2. Sync FDM project to FDS to see 3D
3. Simulate manufacturing options with PA 360
4. Show how FDM and PA 360 work with FDS

Questions?



Thank You!



Appendix A: FDM Information

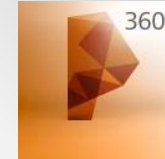


Get it Now! Install FDM from iTunes
<https://itunes.apple.com/us/app/autodesk-factory-design/id657389678>

Sample Files Copy sample files to your A360 account to access in FDM

- Small Building—<http://a360.co/17VzUA6>

Appendix B: PA 360 Information



Get it Now!

Start from your browser

<http://processanalysis360.autodesk.com>

Website

Get more information below

<http://www.autodesk.com/products/process-analysis-360>

Sample Files

Copy sample files to A360>ProcessAnalysis Folder to access in PA 360

- Simple Model—<http://a360.co/1dl59fq>
- Nails Model—<http://a360.co/18qZhxi>
- Video—<http://www.youtube.com/watch?v=gP8xetjKFs0>