



# Digital Prototyping at FIAT

Elena Bortolotti

CRF (FIAT Research Center) – Moldflow team



# Class Summary

In this class you explore how Autodesk® Moldflow® and Autodesk® Showcase® software can visualize manufacturing defects in plastic parts and how Moldflow® results can improve SIMULIA® Abaqus® simulation of thermal load.

# Learning Objectives

At the end of this class, you will be able to:

- Visualize part defects using Autodesk® Showcase® rendering capabilities with homemade graining database
- Improve the thermal load simulation of plastic assemblies with injection molding residual stresses results

# Visualization as an engineering communication tool

FIAT Punto Evo



Interior Sink Marks Visualization

Alfa Romeo Giulietta



Dashboard Flush Gap Simulation  
under Thermal Load

# Interiors Sink Marks Visualization



# Interiors Sink Marks Visualization

- Dashboard upper cover - sink mark estimate
- Glove box - comparison between simulated and real part
- Door panel - comparison between simulated and real part

# Interiors Sink Marks Visualization

We have studied  
three interior parts...

Dashboard  
upper cover

Glove box

Door panel





# Interiors Sink Marks Visualization

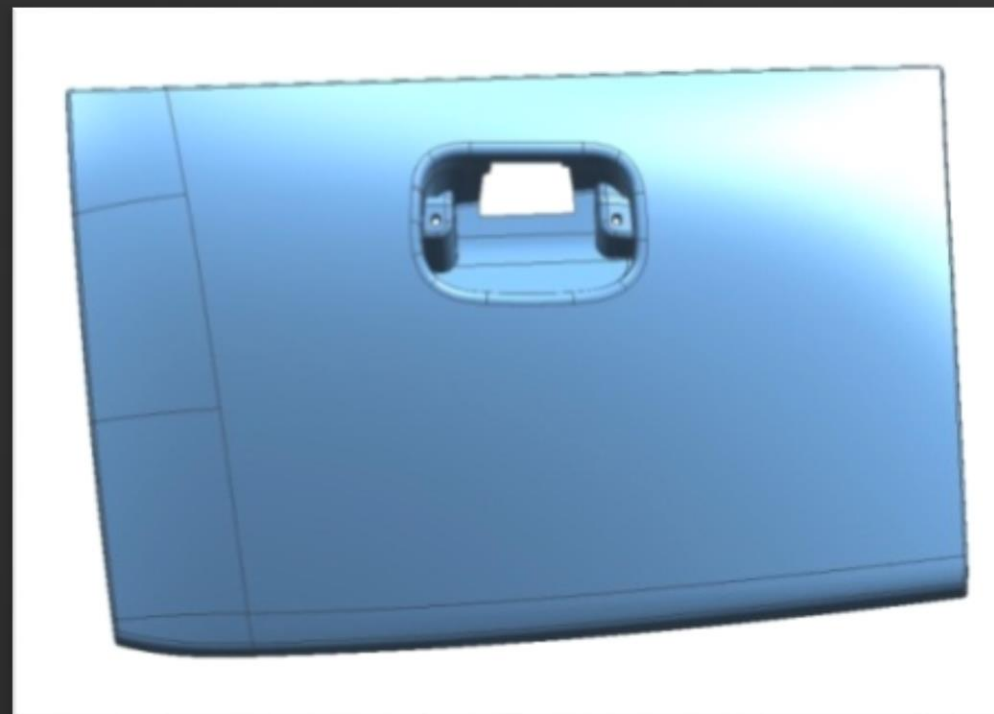


...and made a comparison  
with real parts

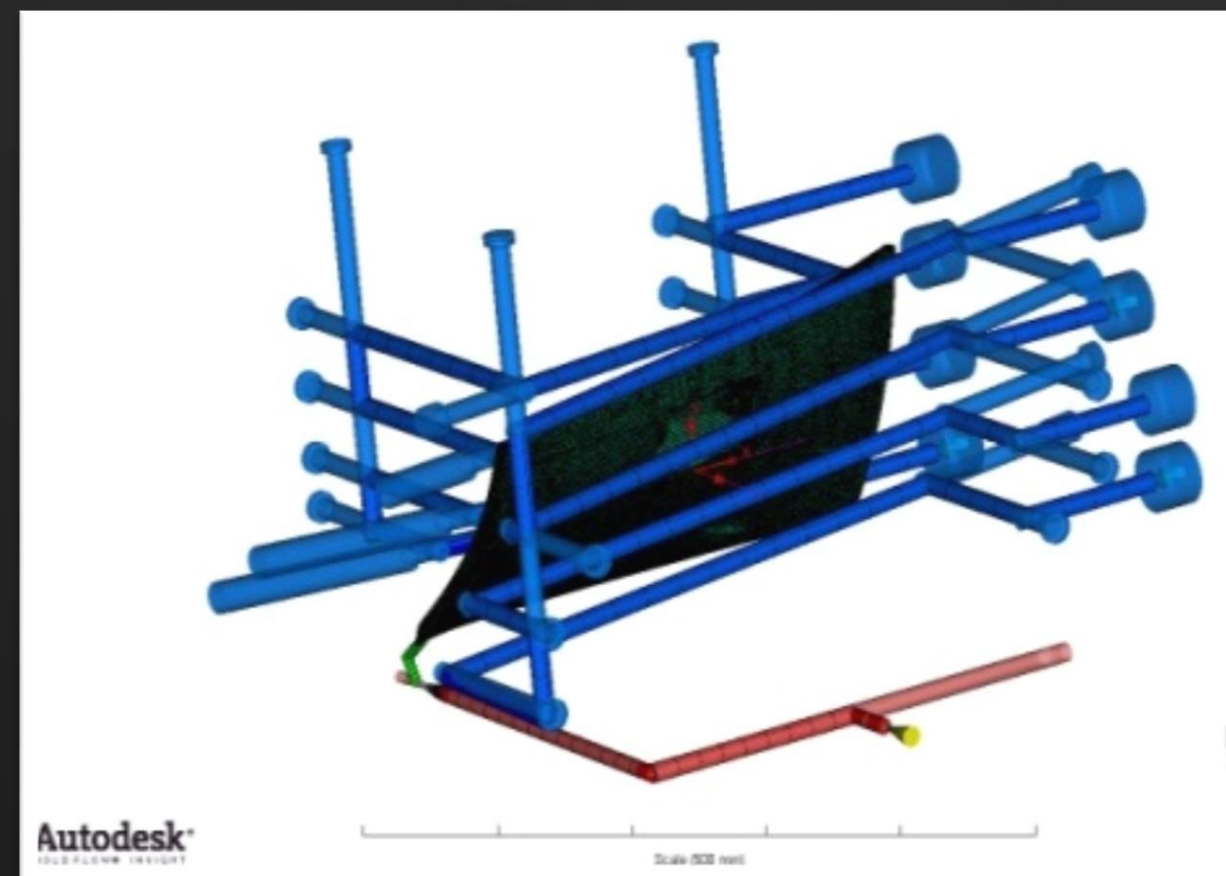




# Interiors Sink Marks Visualization

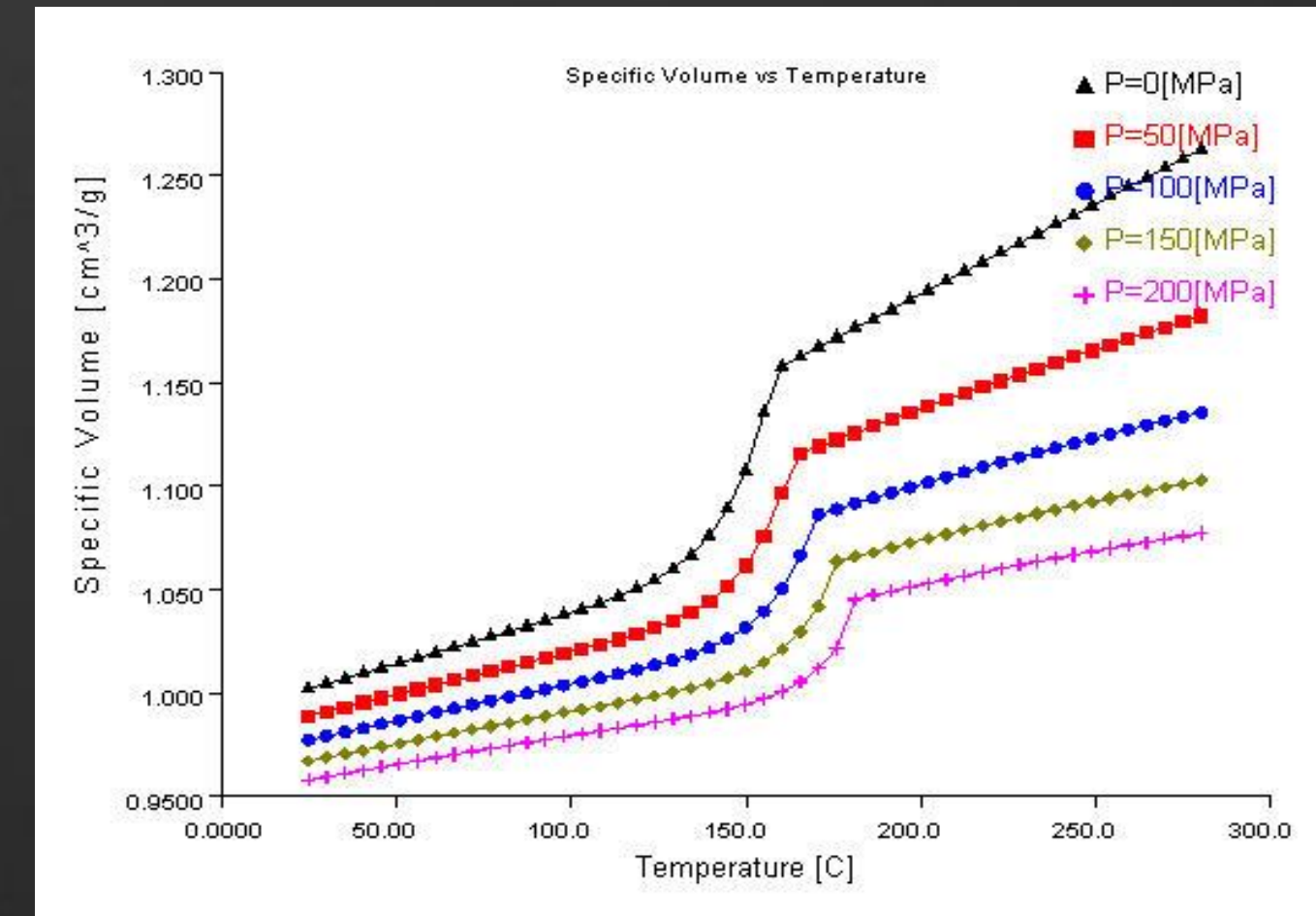


Material database

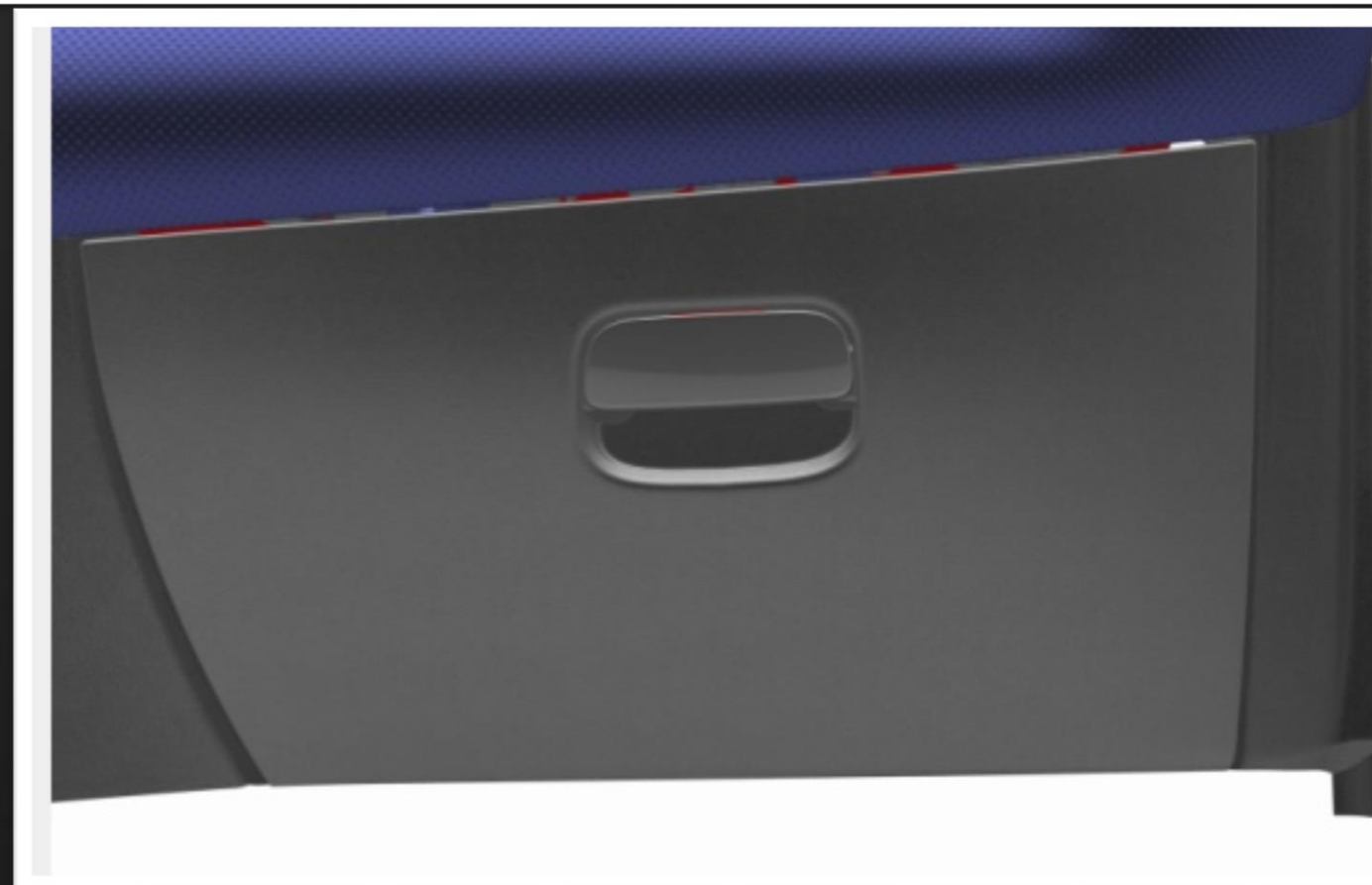


Visualization

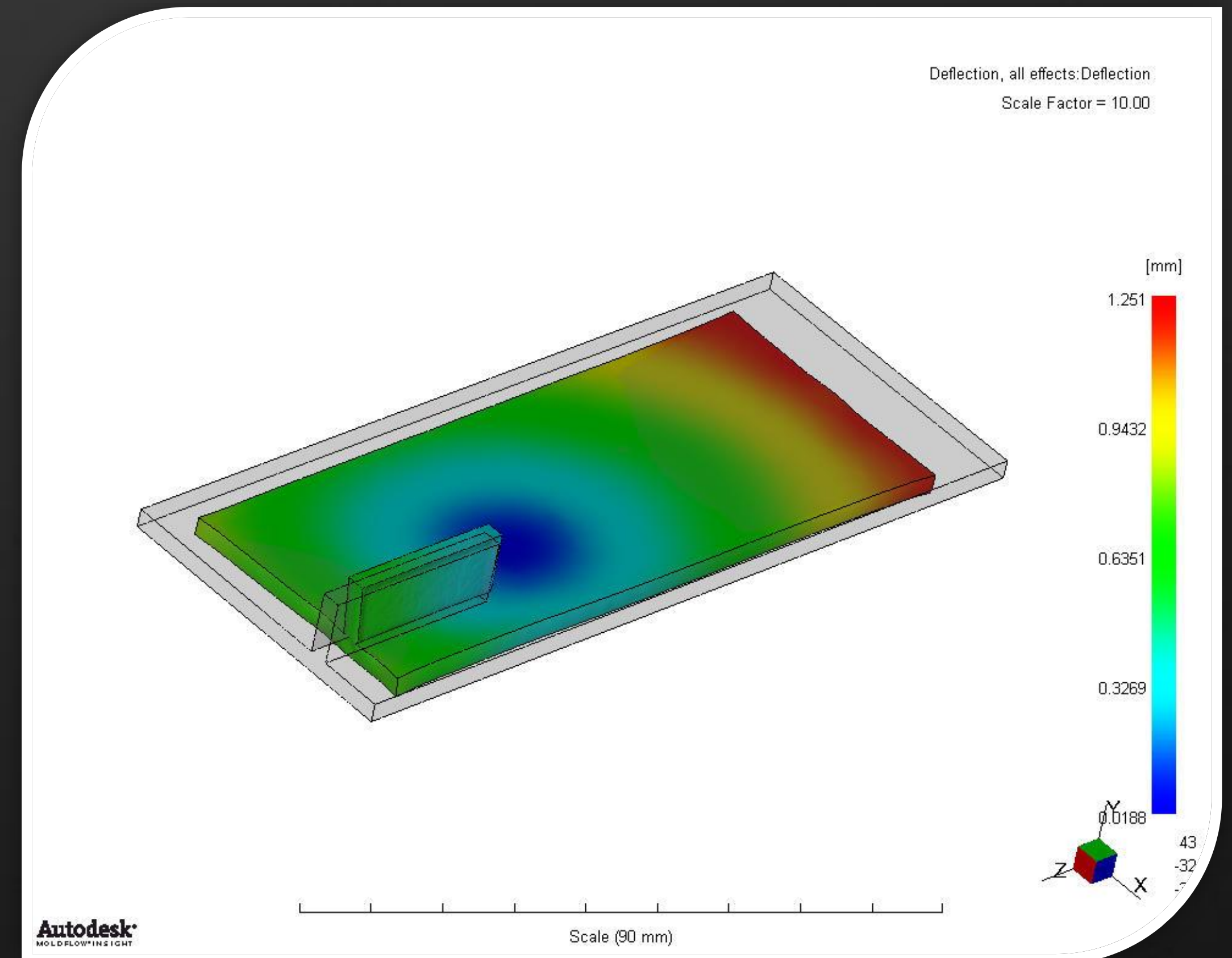
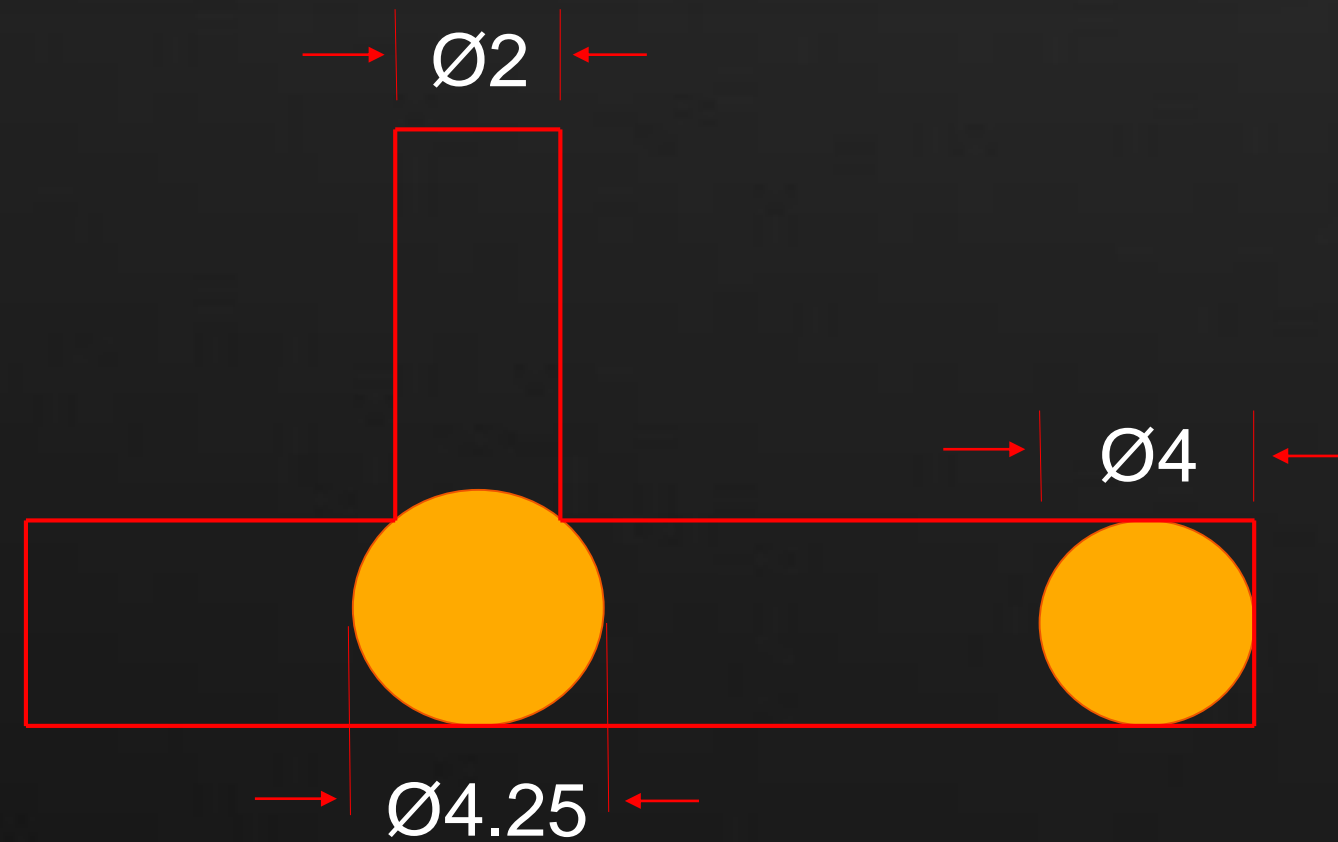
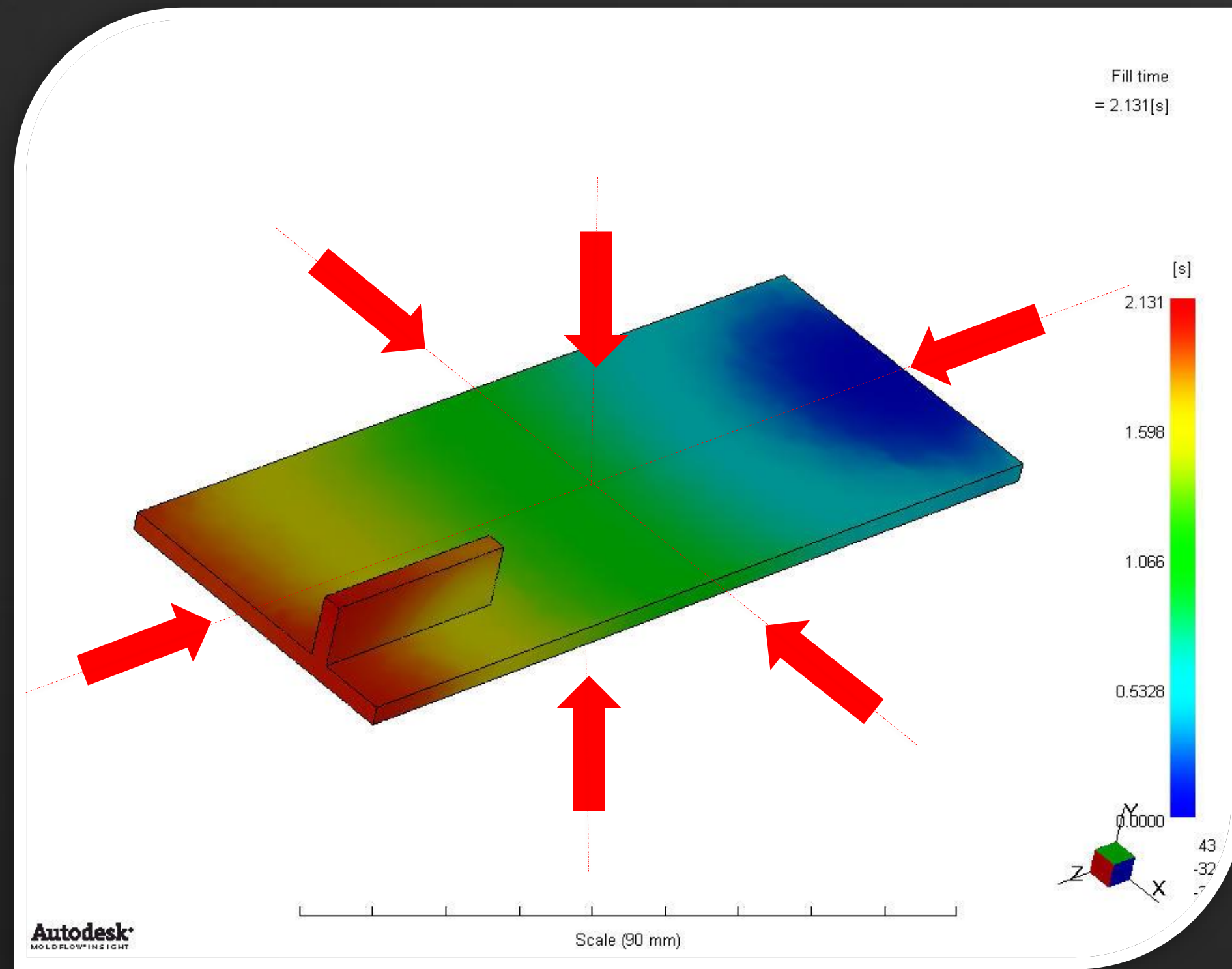
Design



Process conditions

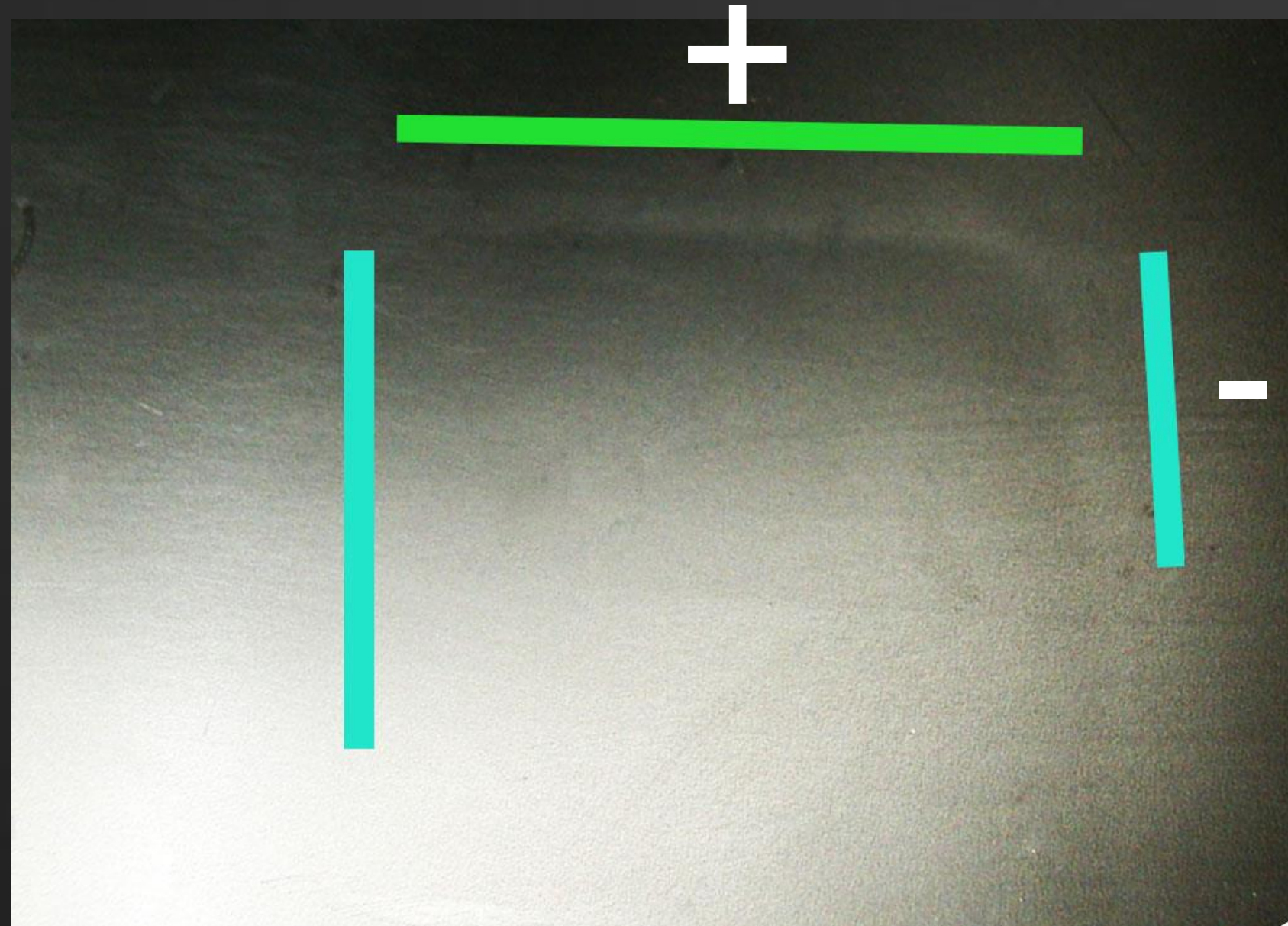


# Interiors Sink Marks Visualization



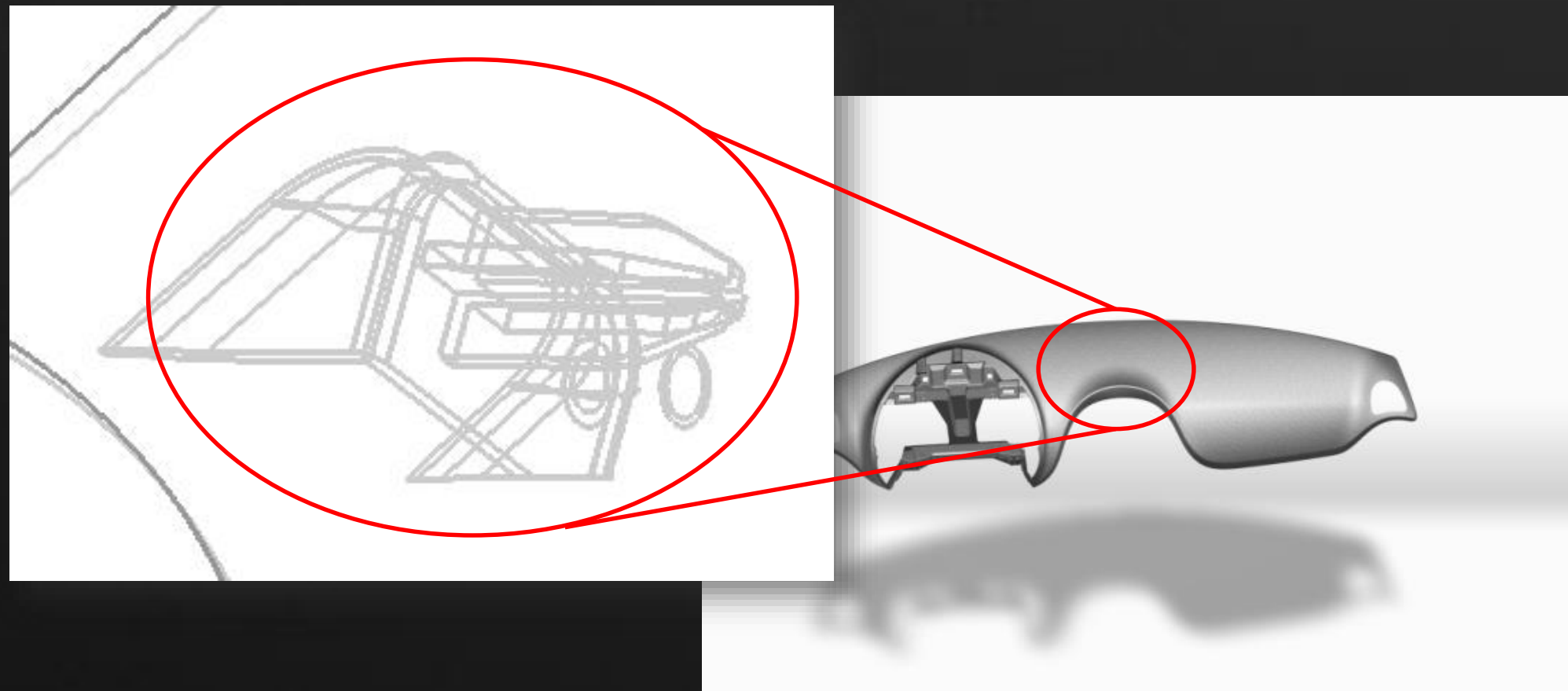


# Interiors Sink Marks Visualization

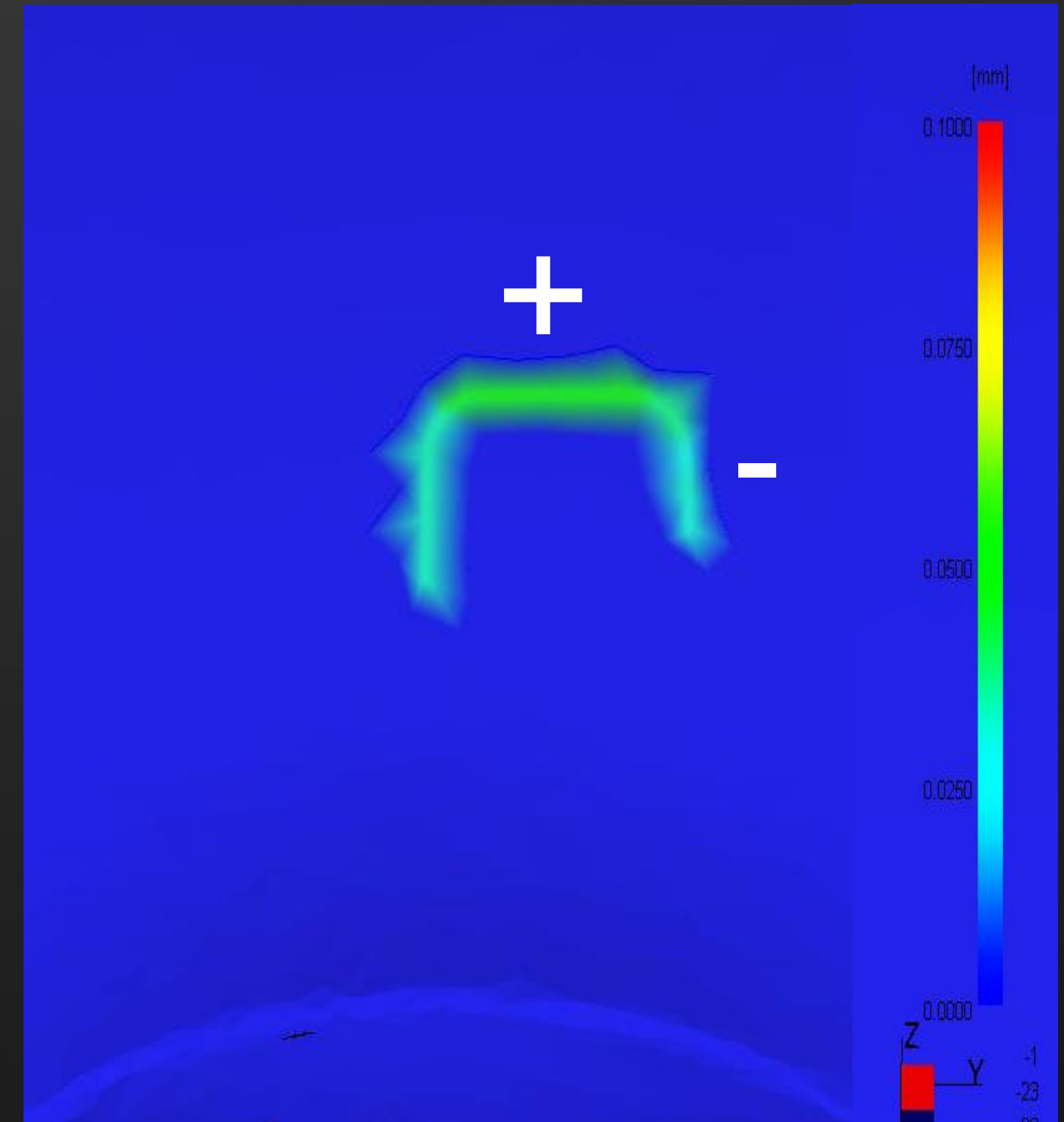


Dashboard upper cover

Real part  
Without graining



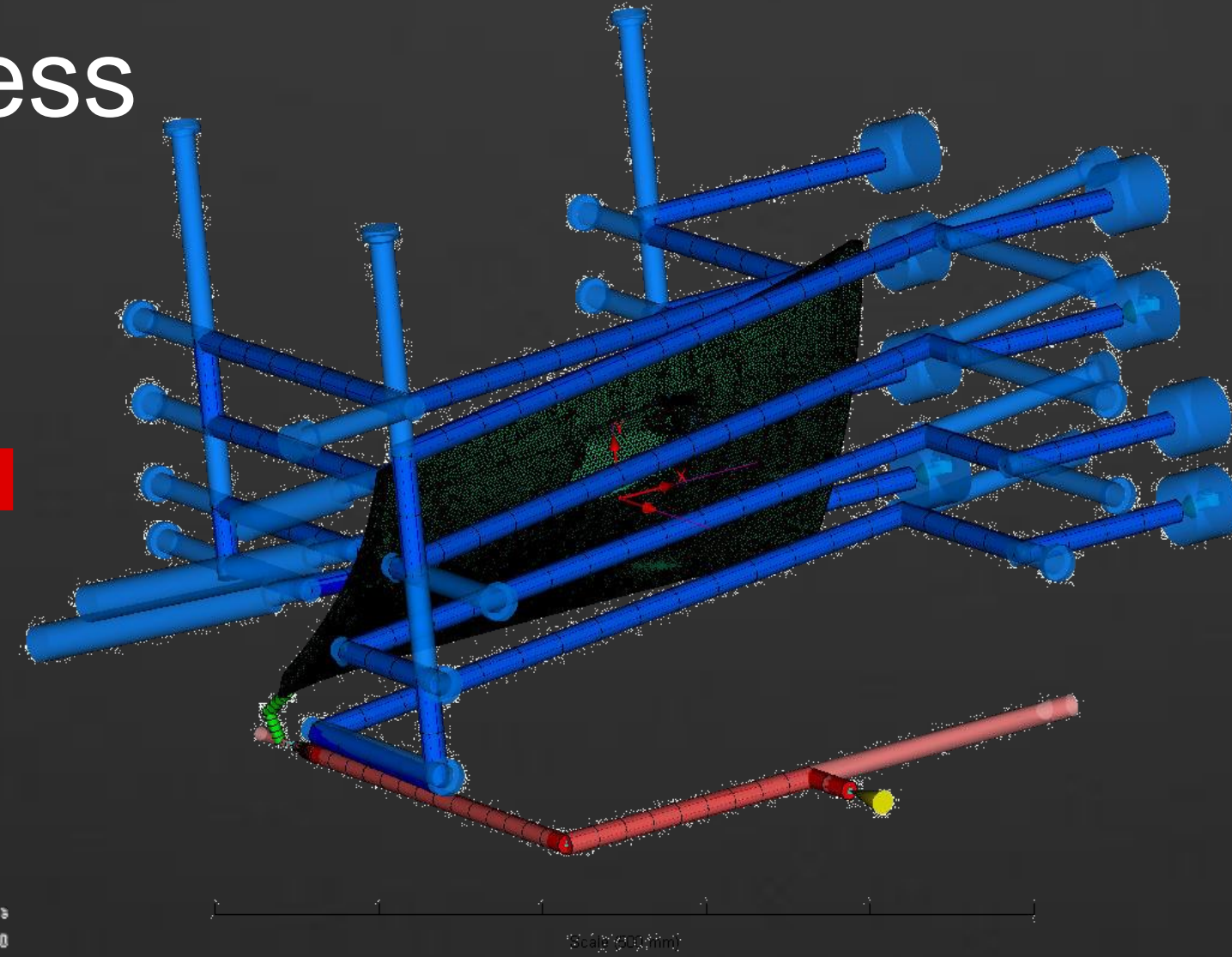
Sink mark estimate  
(through process simulation)



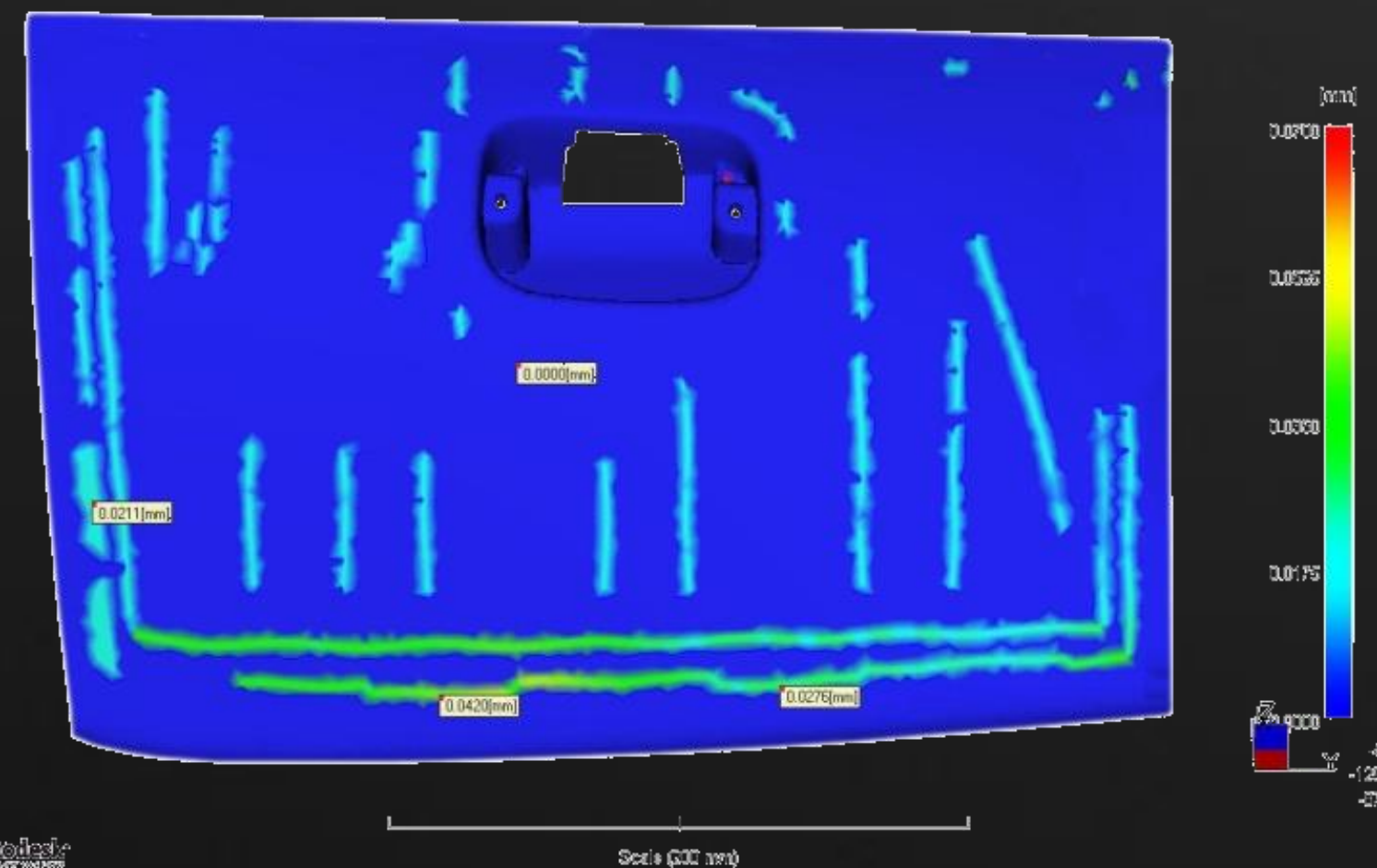


# Interiors Sink Marks Visualization

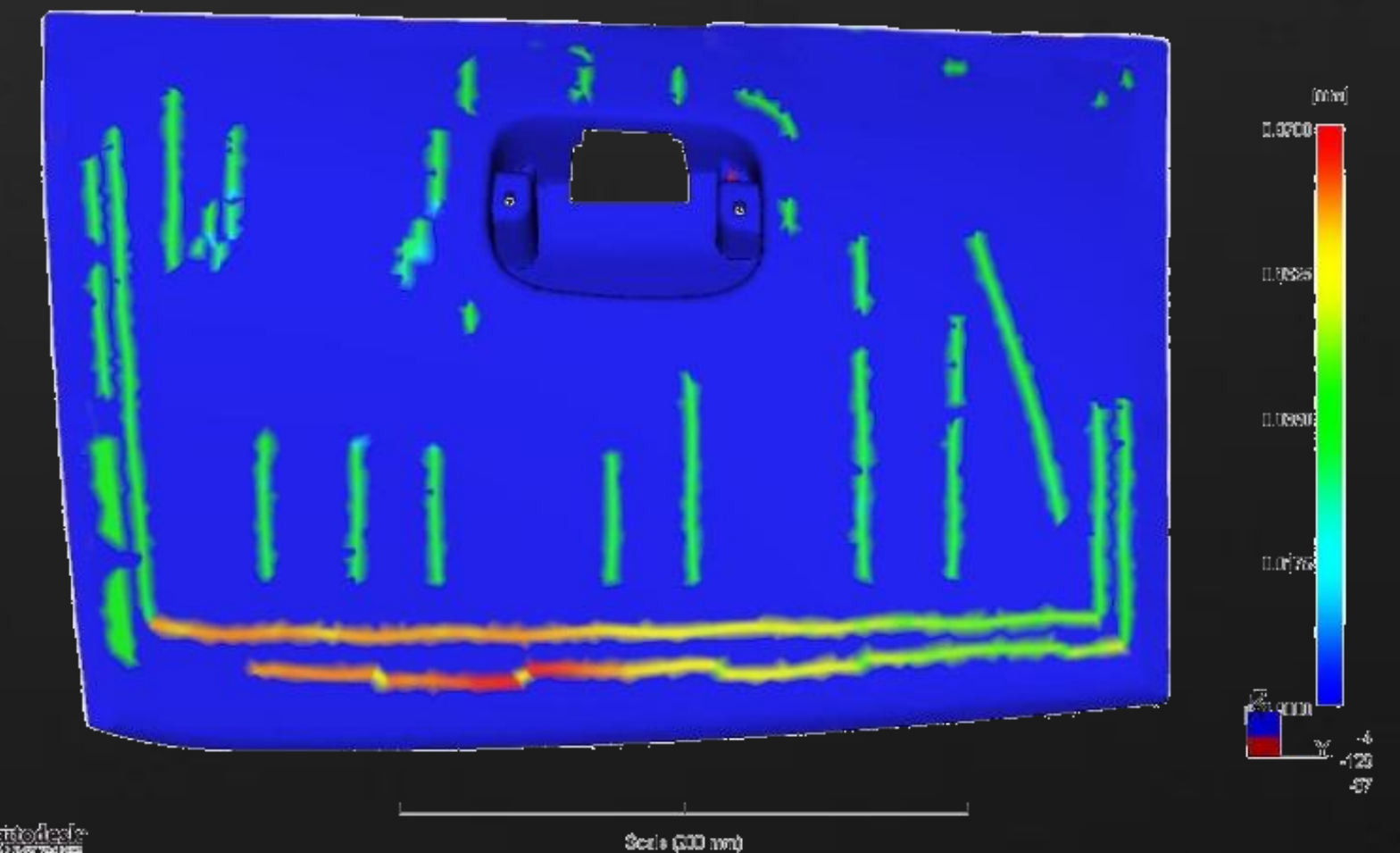
Glove box - Process



Sink mark estimate [mm]  
Mid Pressure



Sink mark estimate [mm]  
Low Pressure





# Interiors Sink Marks Visualization



Glove box - Low pressure - Visualization

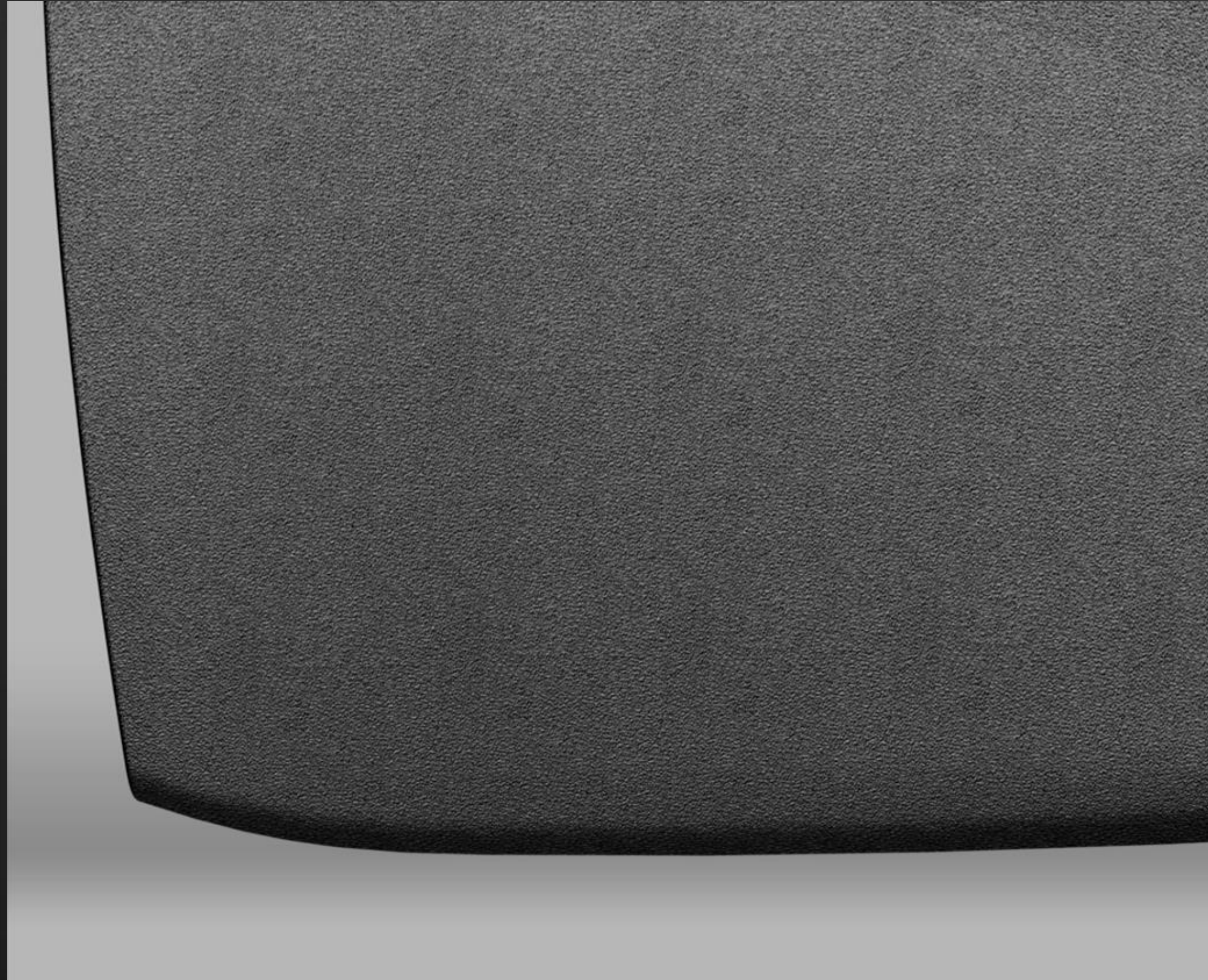
Part weight 362 g  
not ok with D21 graining

Glove box - Low pressure - Real part





# Interiors Sink Marks Visualization



Glove box - Mid pressure - Visualization

Part weight 372 g  
ok with D21 graining

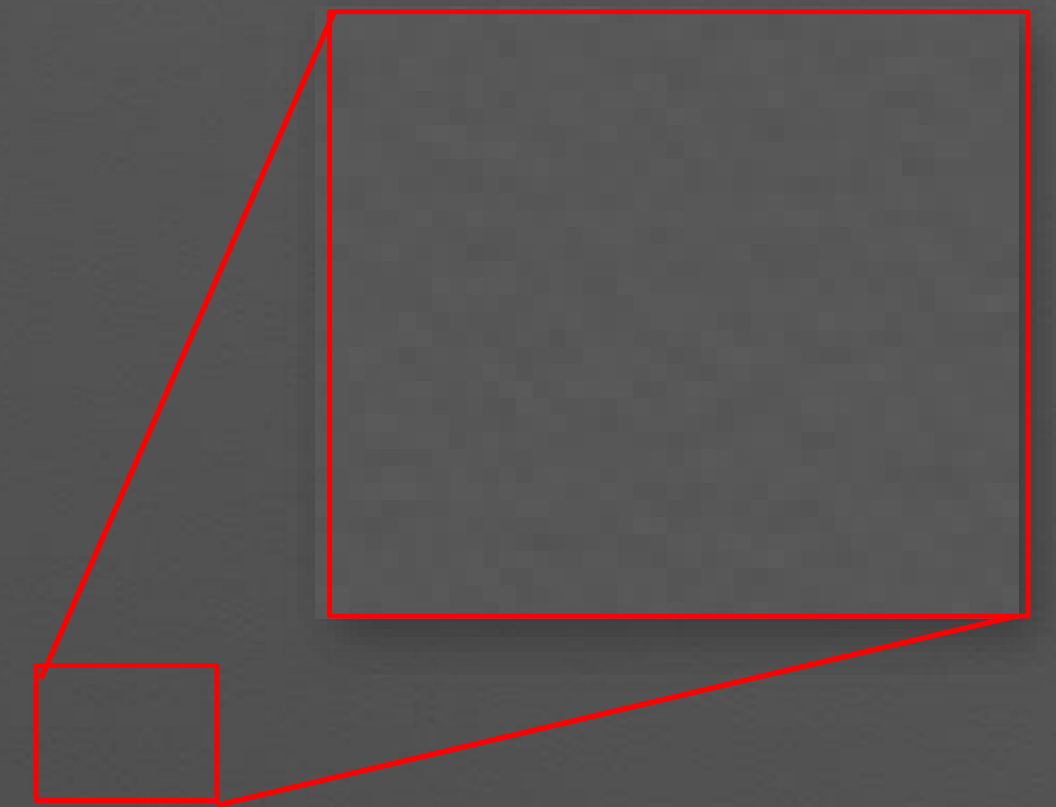
Glove box - Mid pressure - Real part





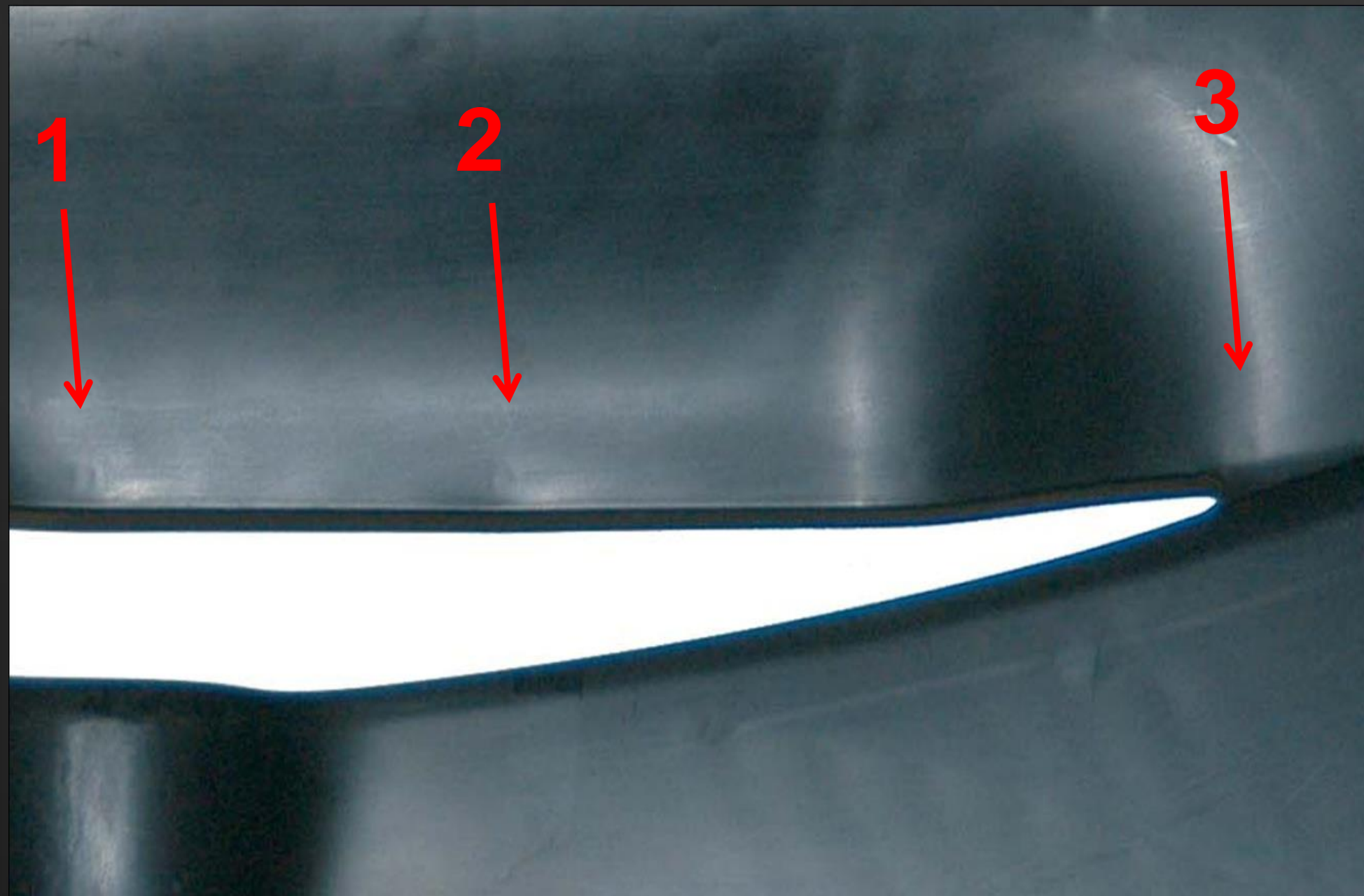
# Interiors Sink Marks Visualization

Glove box - Mid pressure  
Without graining

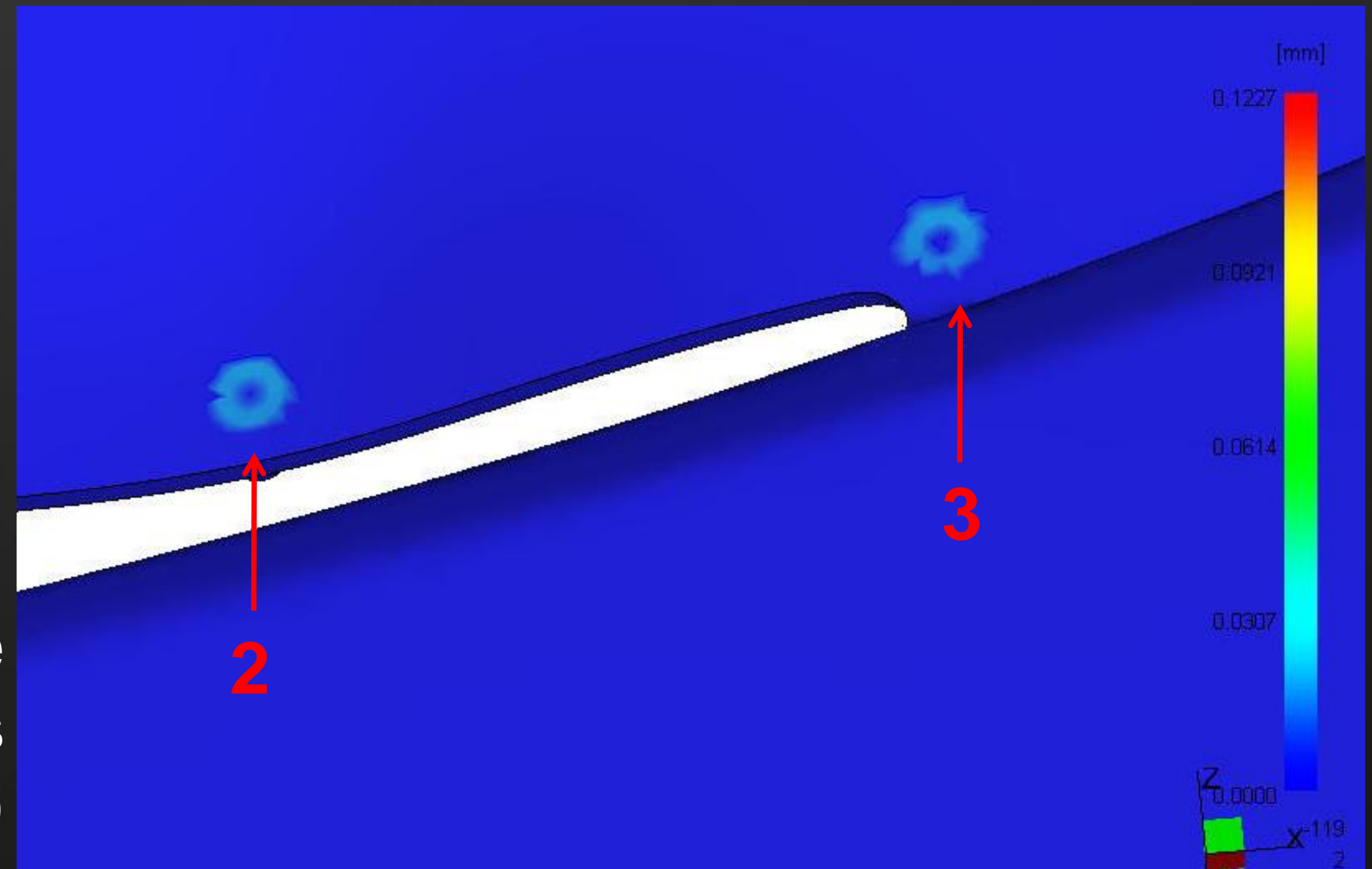


Glove box - Mid pressure  
Lighter emboss than D21 not cover defects

# Interiors Sink Marks Visualization



Real door panel  
Without graining

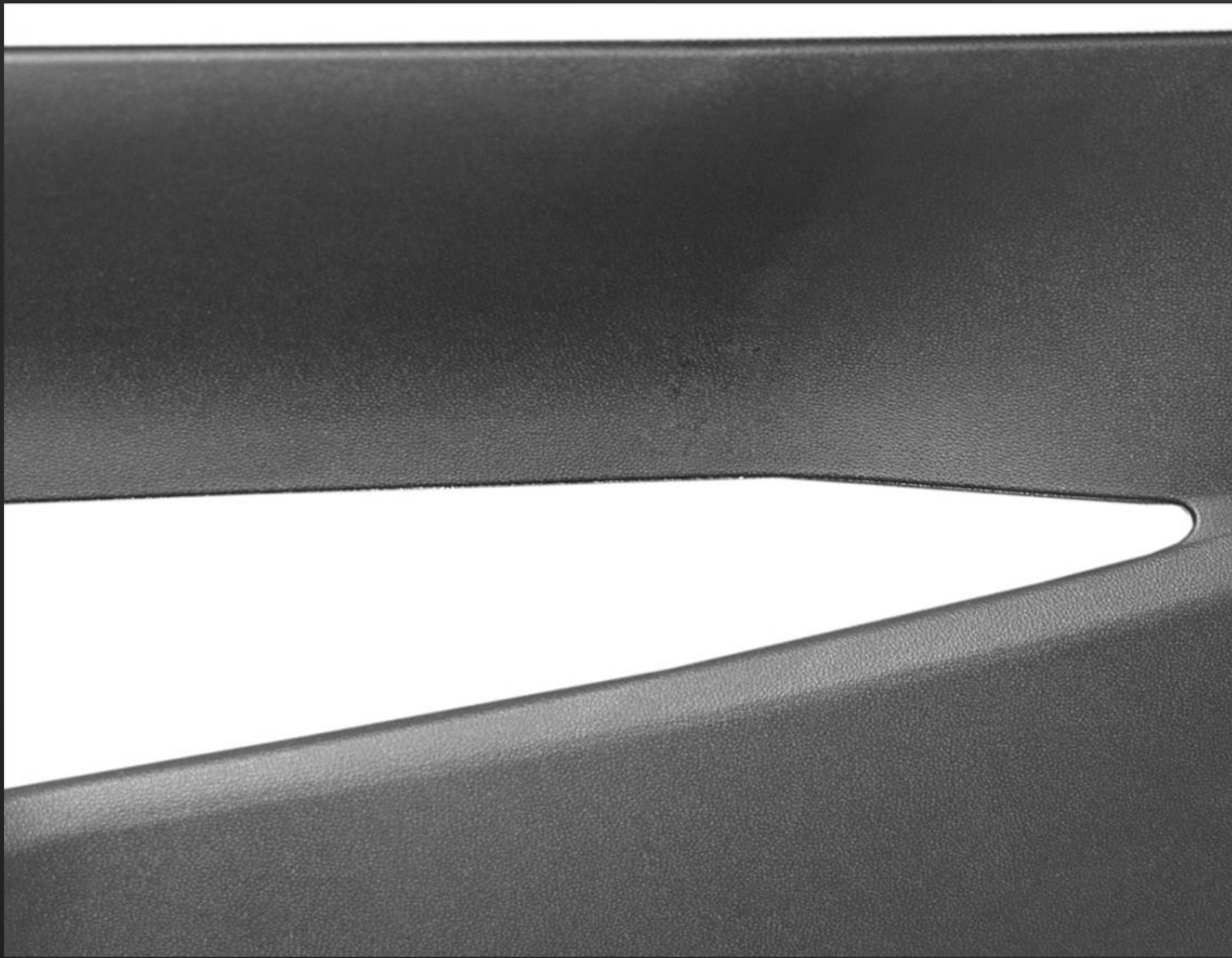


Sink mark estimate  
(through process  
simulation)





# Interiors Sink Marks Visualization

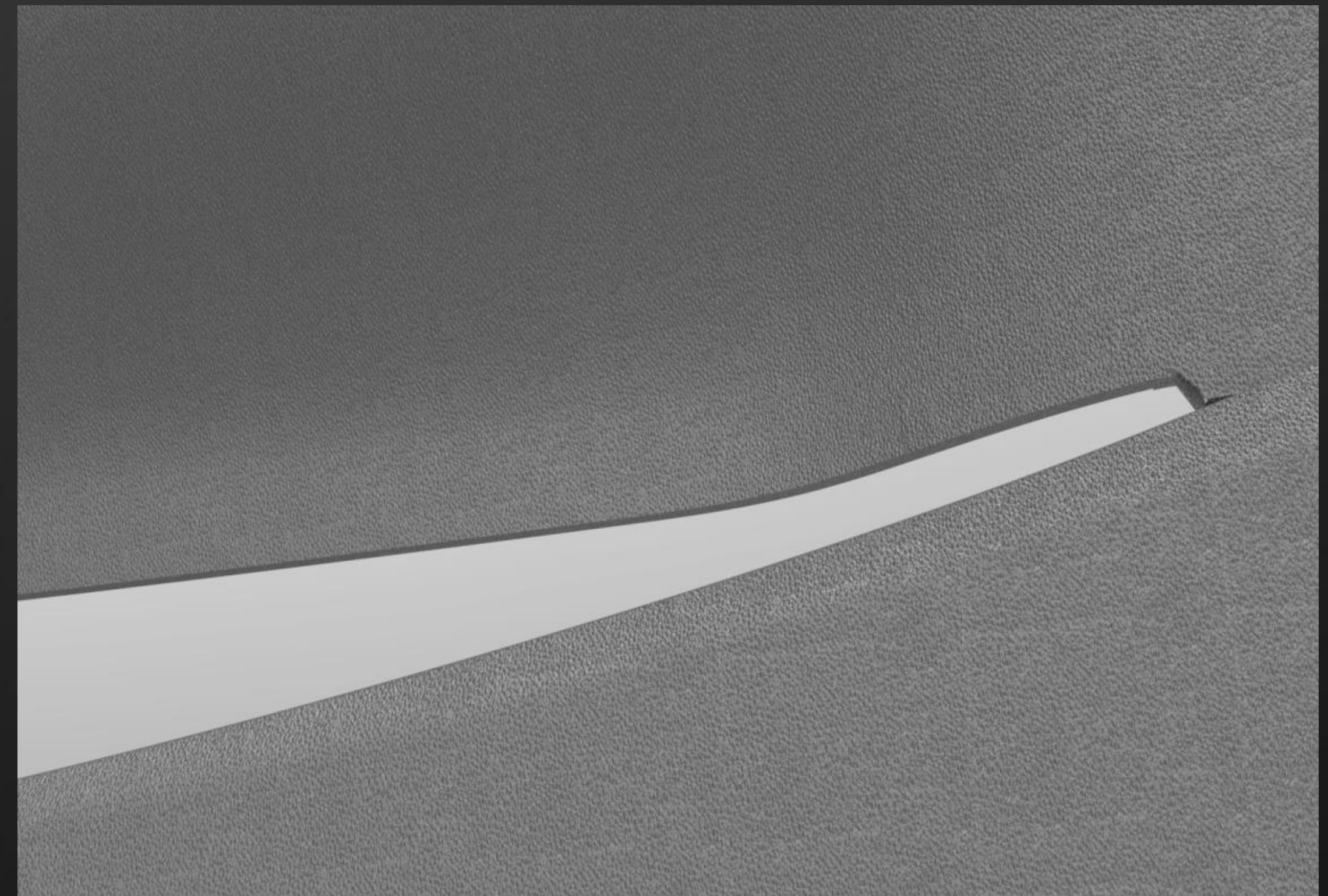


Real door panel  
With graining



## Visualization

OK! Graining and process have  
been tuned to cover defects!





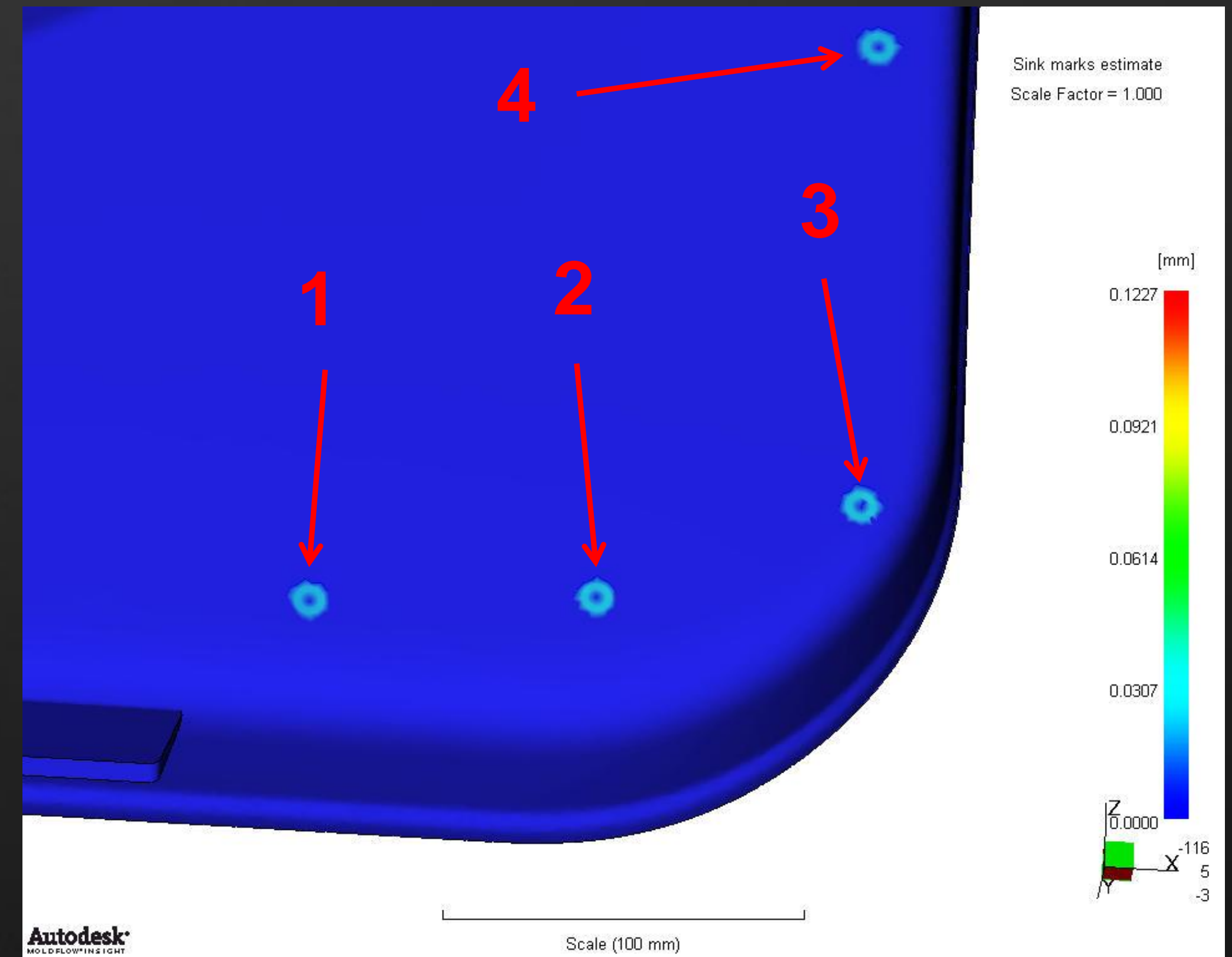
# Interiors Sink Marks Visualization



Real door panel  
Without graining

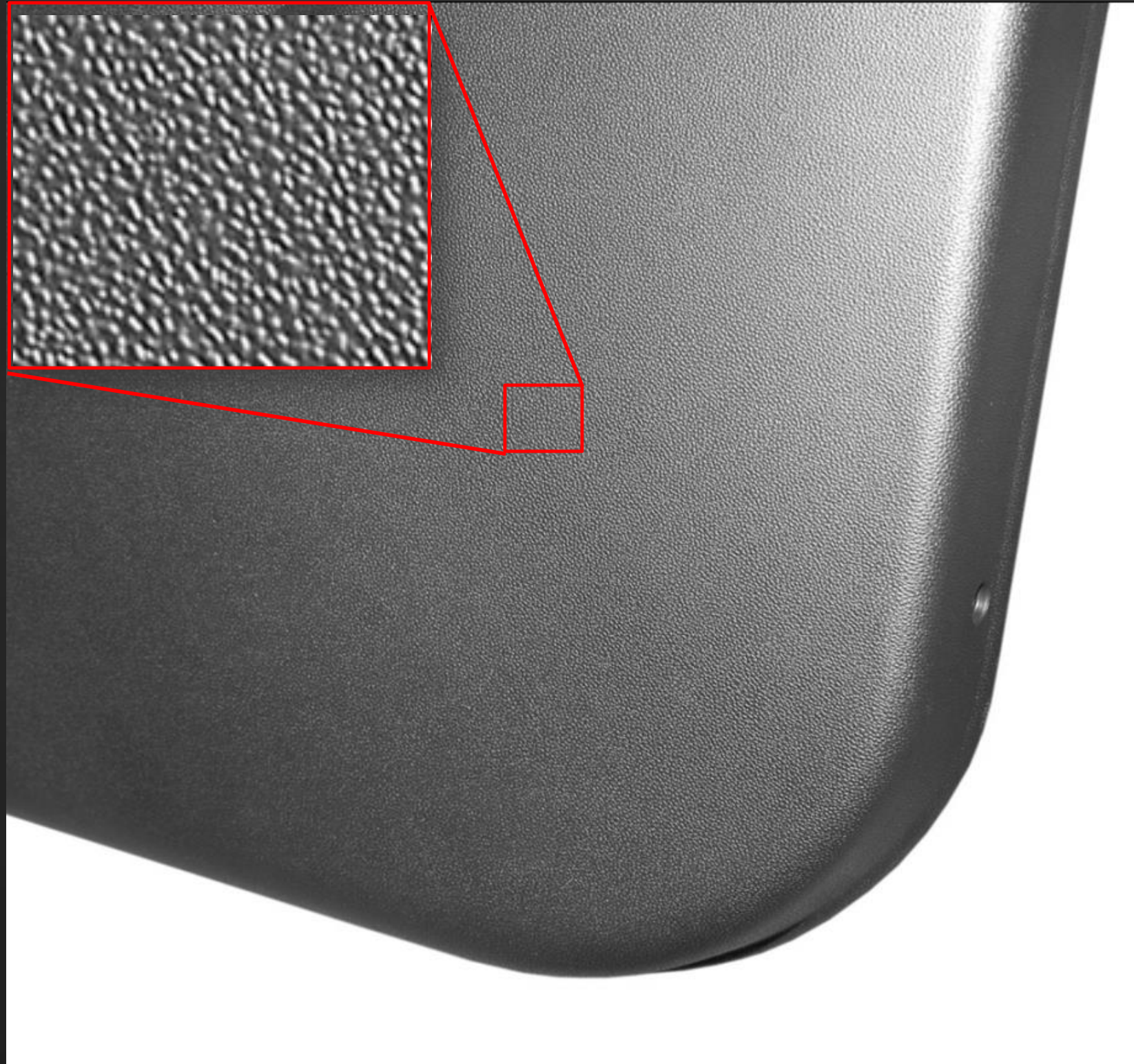


Sink mark estimate  
(through process simulation)





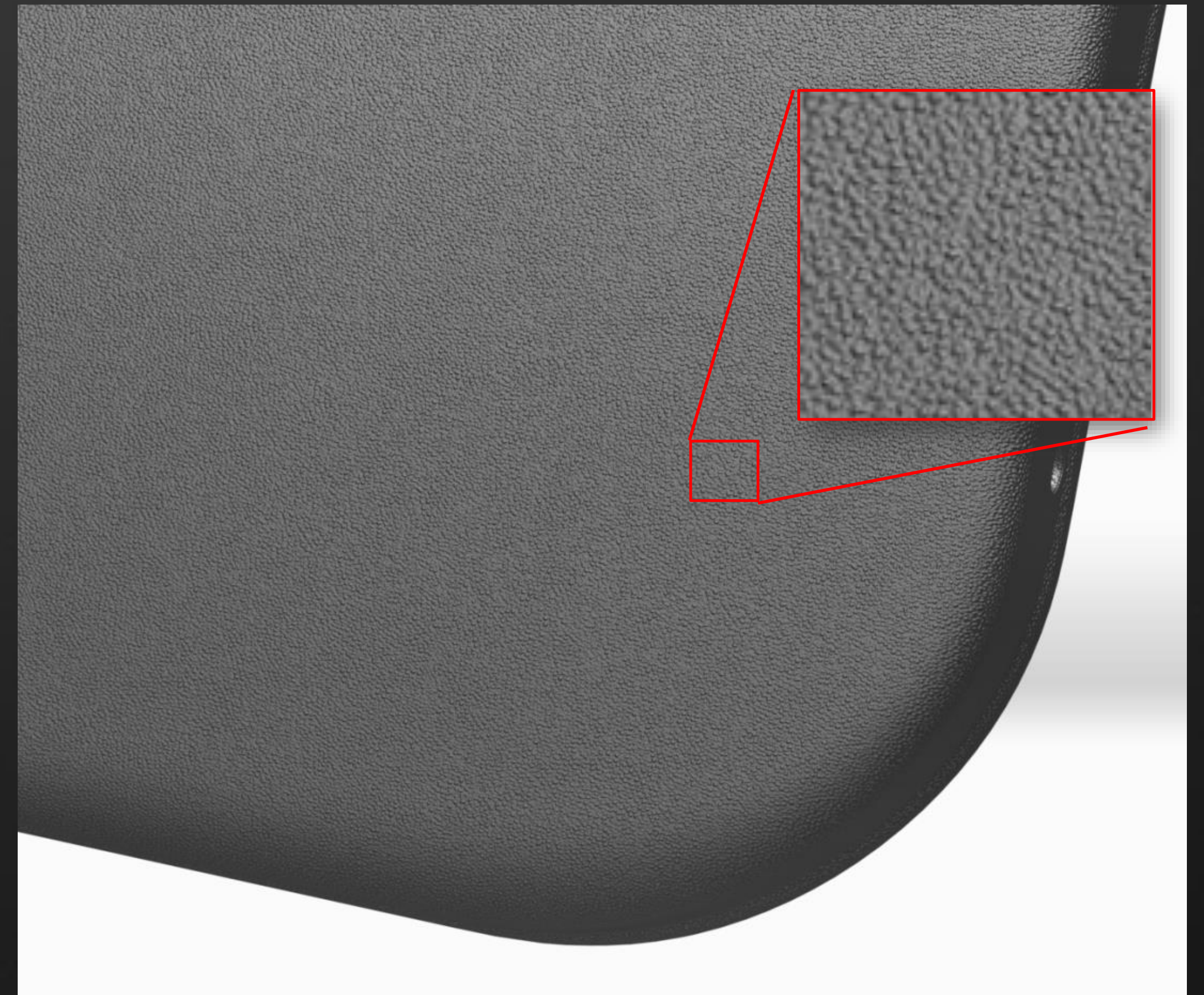
# Interiors Sink Marks Visualization



Real door panel  
With graining



Visualization  
Ok with D21 graining





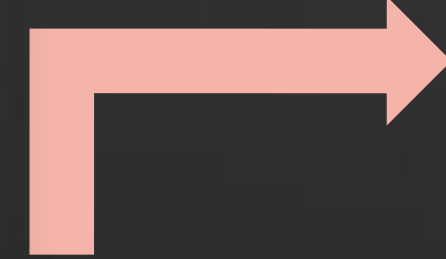
# Dashboard Flush Gap Simulation under Thermal Load



# Dashboard Flush Gap Simulation under Thermal Load

- Classical simulation
- Process oriented simulation
- Glove box: comparison of calculated and experimental data
- Fuse box: comparison of calculated and experimental data

# Dashboard Flush Gap Simulation under Thermal Load



Dashboard  
assembly



Classical Simulation

3D CAD  
data

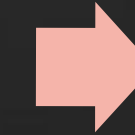


FEM model  
for every  
component

Thermal  
load  
(gravity)



Flush gap



Comparison  
with cockpit  
flush gap



# Dashboard Flush Gap Simulation under Thermal Load



Dashboard  
assembly

Process Oriented Simulation

3D CAD  
data

FEM model  
for every  
component

Thermal  
load  
(gravity)

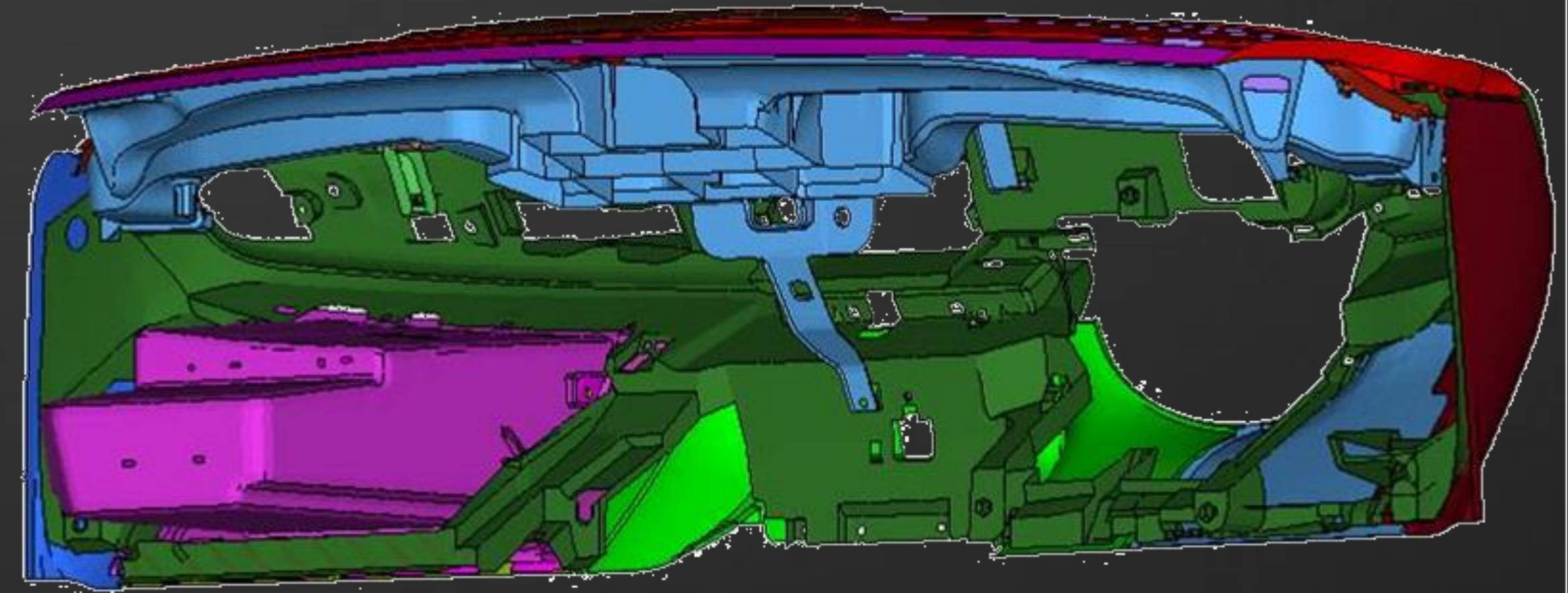
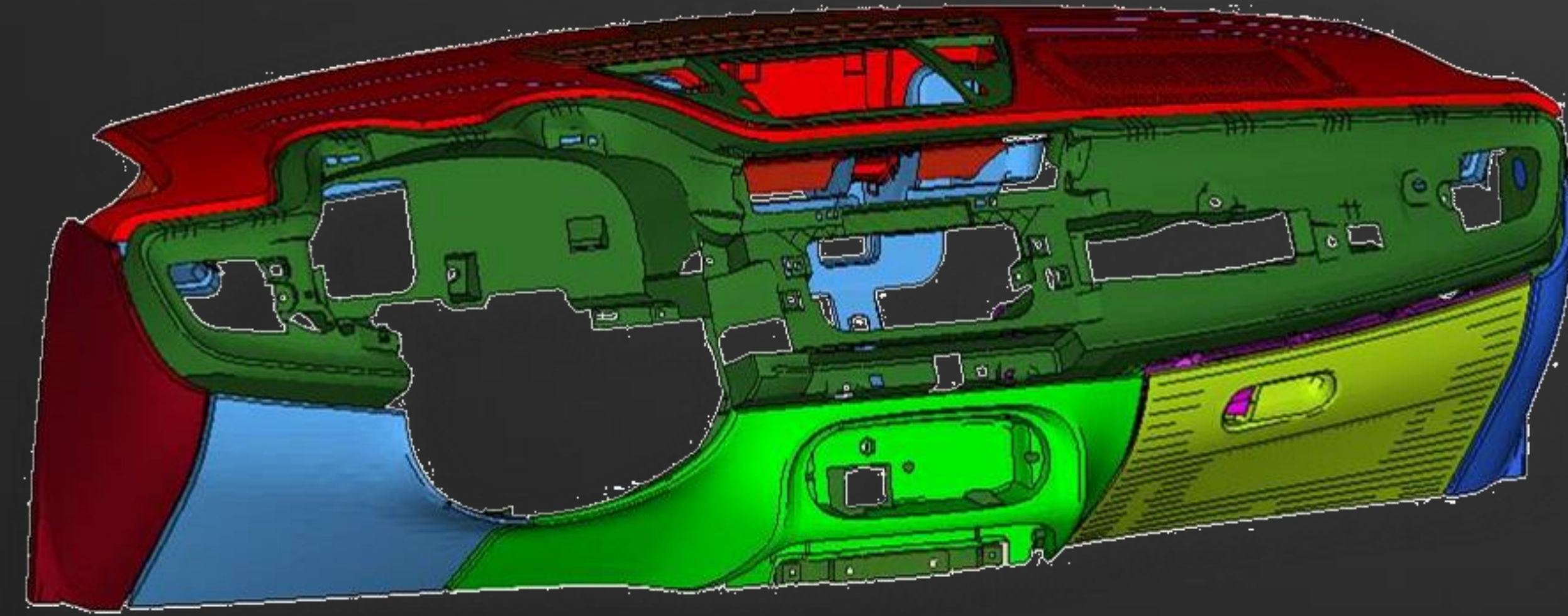
Flush gap

Comparison  
with cockpit  
flush gap

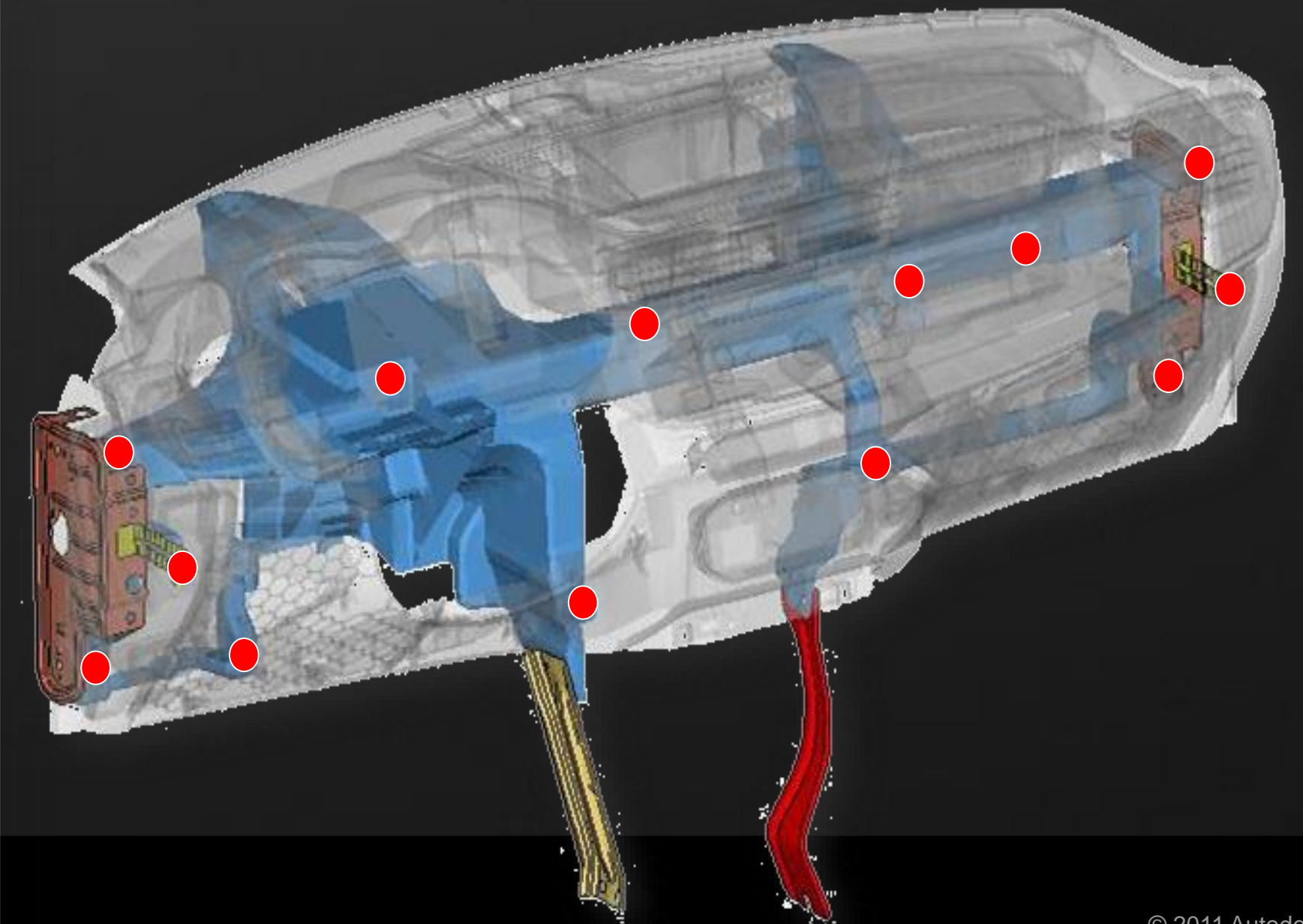
Injection  
molding  
simulation



# Dashboard Flush Gap Simulation under Thermal Load

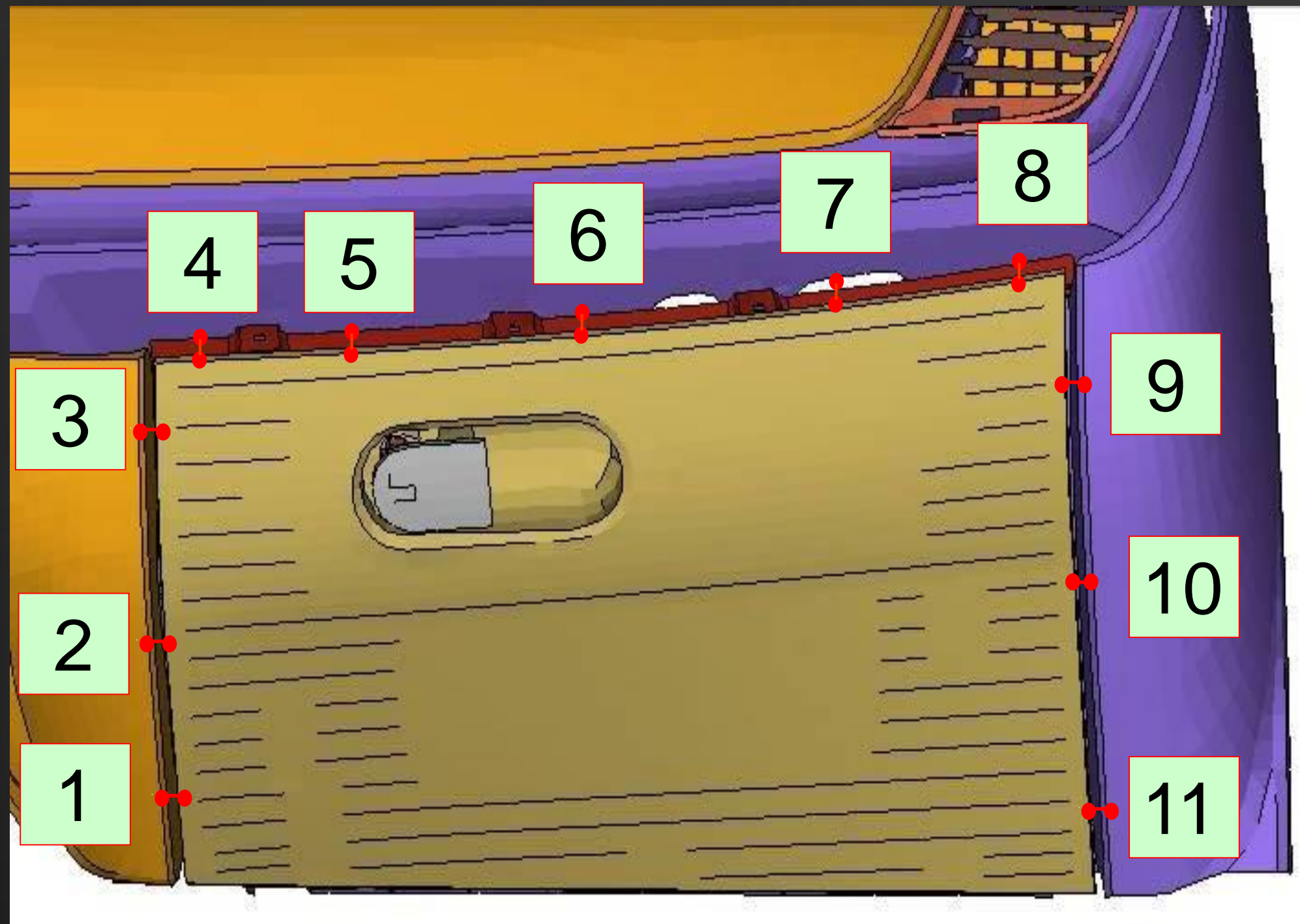


- Thermoplastic parts modeled for accomplish both software programs mesh request
- Parts fixed to the body in white



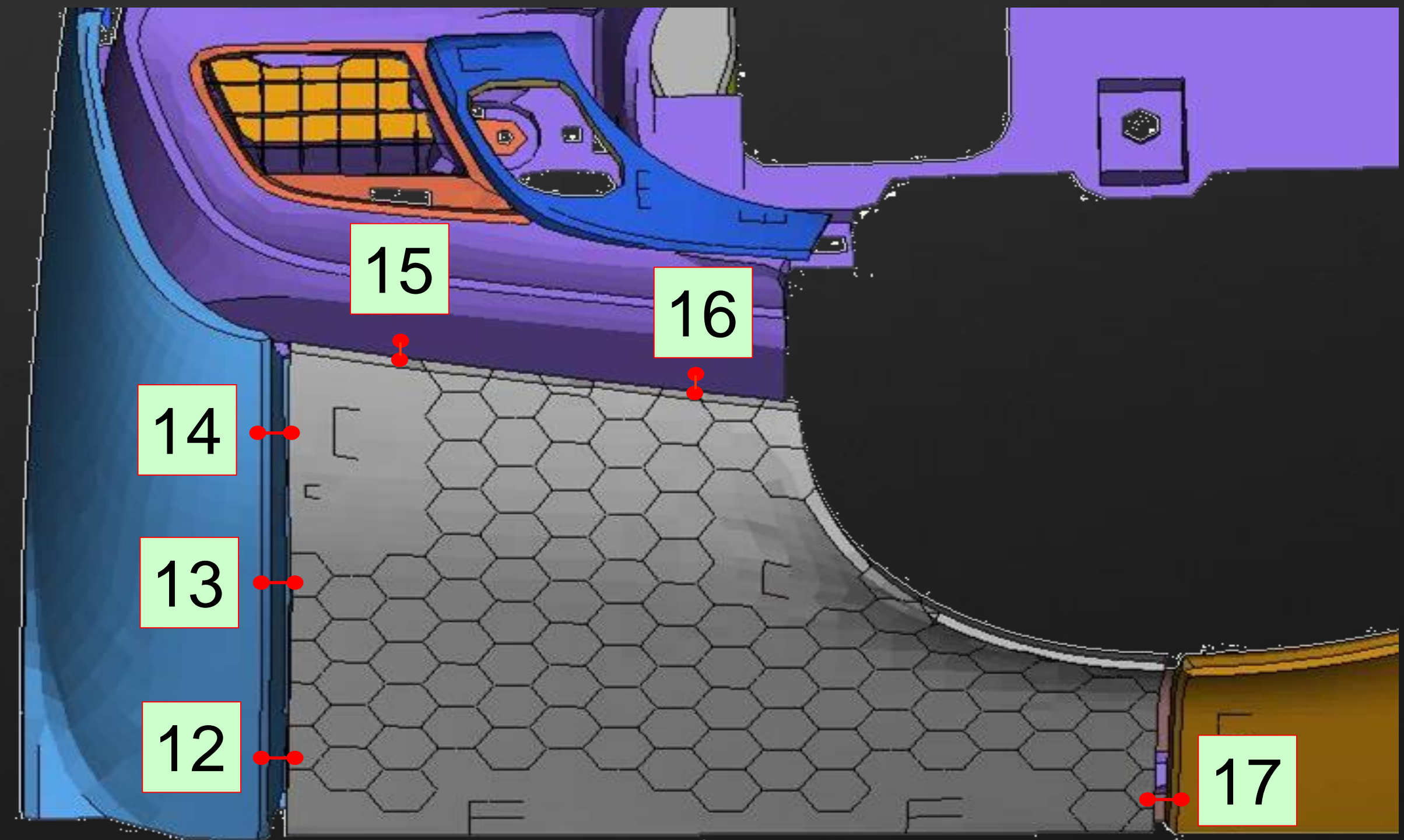


# Dashboard Flush Gap Simulation under Thermal Load



Fuse box flush gap points of measure

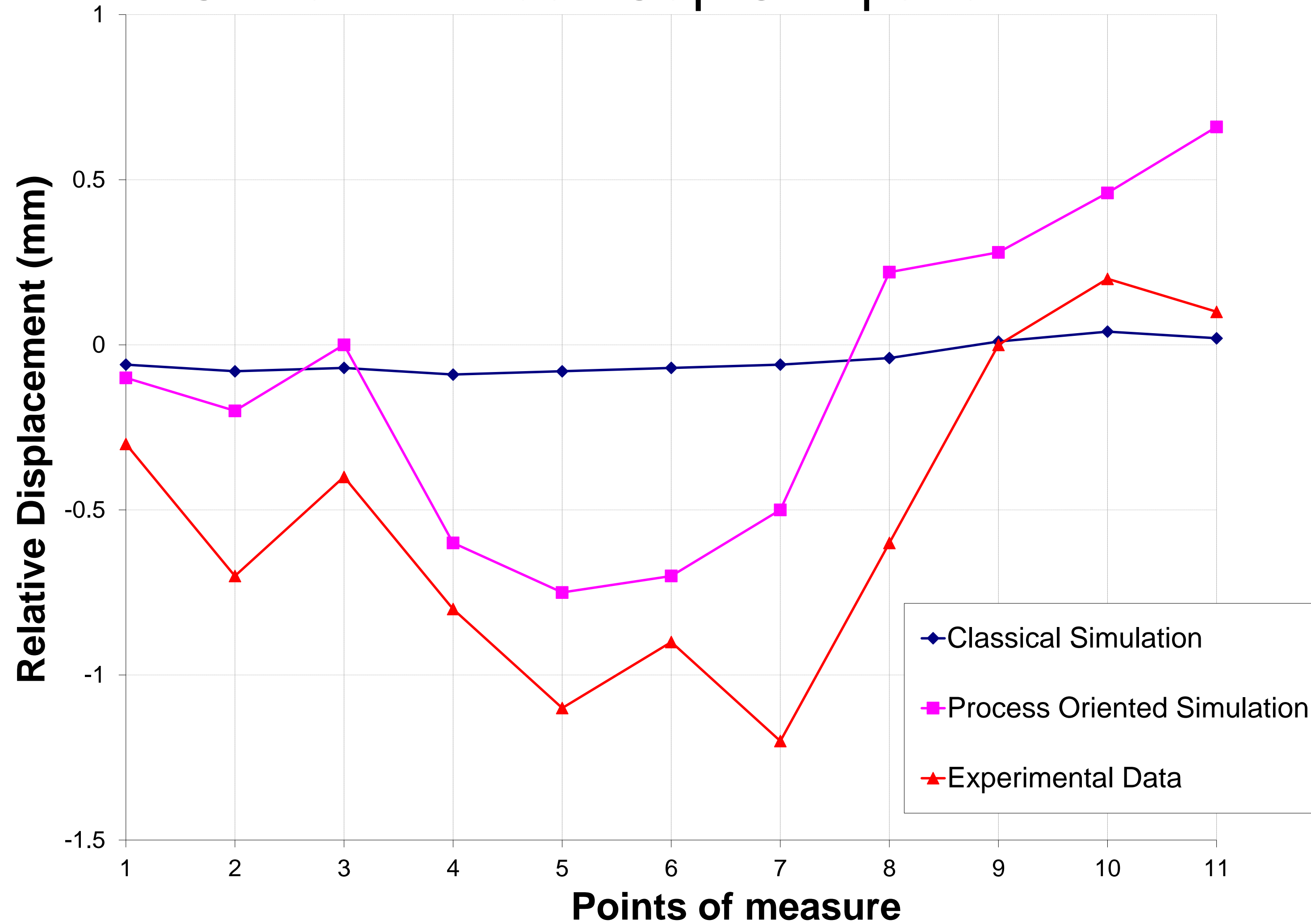
Glove box flush gap points of measure





# Dashboard Flush Gap Simulation under Thermal Load

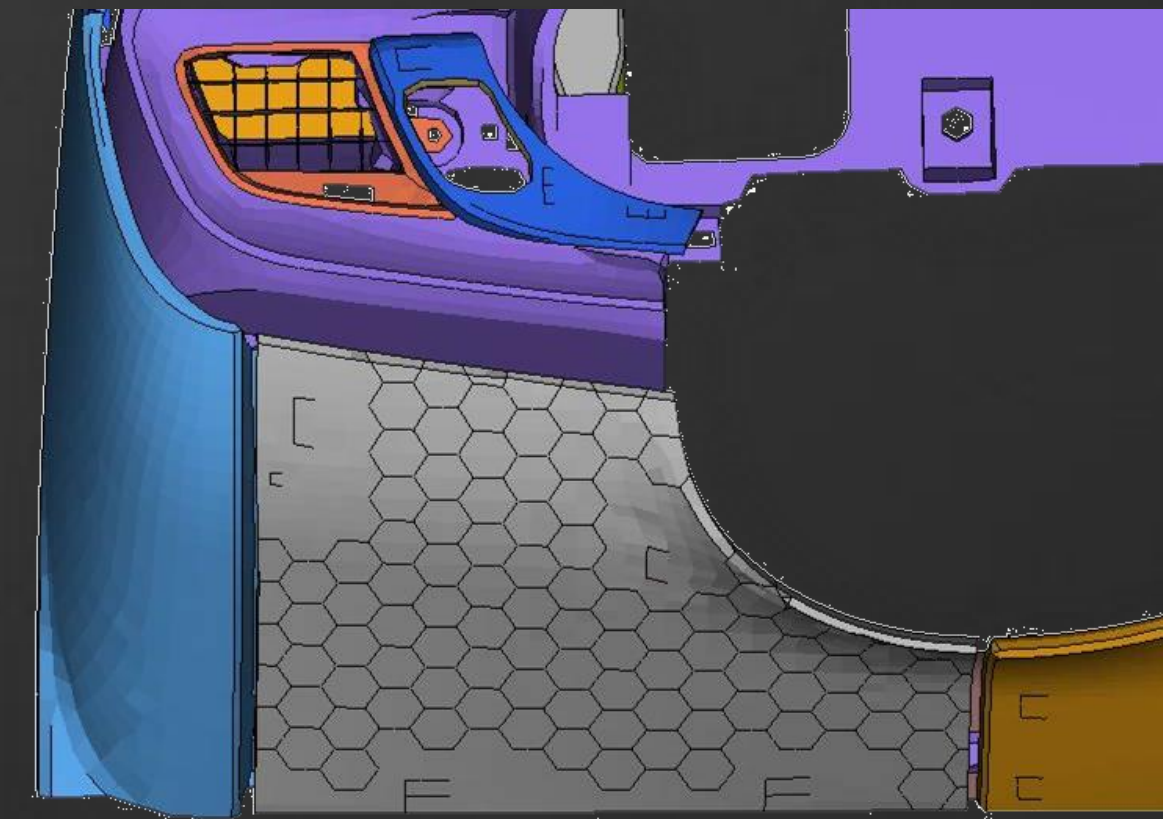
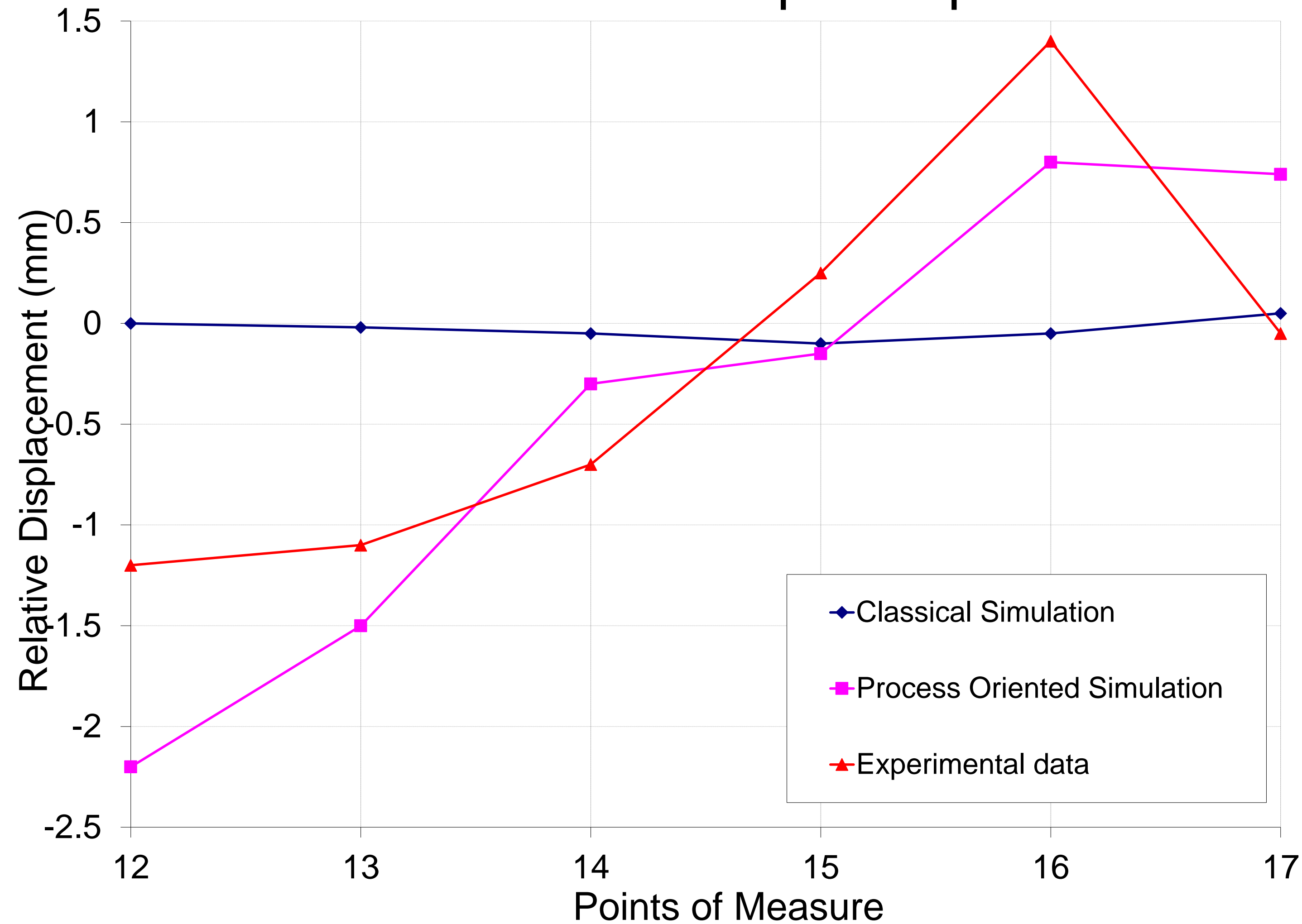
## Glove Box Flush Gap Comparison





# Dashboard Flush Gap Simulation under Thermal Load

## Fuse Box Flush Gap Comparison





# Autodesk University Session Feedback

Your feedback is very important to Autodesk.

- ✓ You can complete the session survey on your mobile device, PC, or at a survey station.
- ✓ Each completed session survey enters you in that day's drawing for a free AU 2012 pass.
- ✓ You can help make AU 2012 better!



Complete the AU Conference Survey at a survey station and receive an AU 2011 T-Shirt.



